

SECTION CORNER RECORD

BOONE COUNTY SURVEYOR'S OFFICE

NE 800-000

State Plane grid coordinates NAD83 (2011):

Corner 1: North: 1787860.94 East: 3124774.64 (U.S. survey feet)

Corner 2: North: 1787871.50 East: 3124774.61 (U.S. survey feet)

Corner 1: Harrison, 4" disk 'Section Corner', 6" a.g.

Corner 2: 5/8" rebar with metal cap stamped 'Boone County Surveyor' 4" a.g.

Indiana tie card references:

IN02_T20NR1W24_80 IN02_T20NR1E19_72

IN02_T20NR1W25_08 IN02_T20NR1E30_00

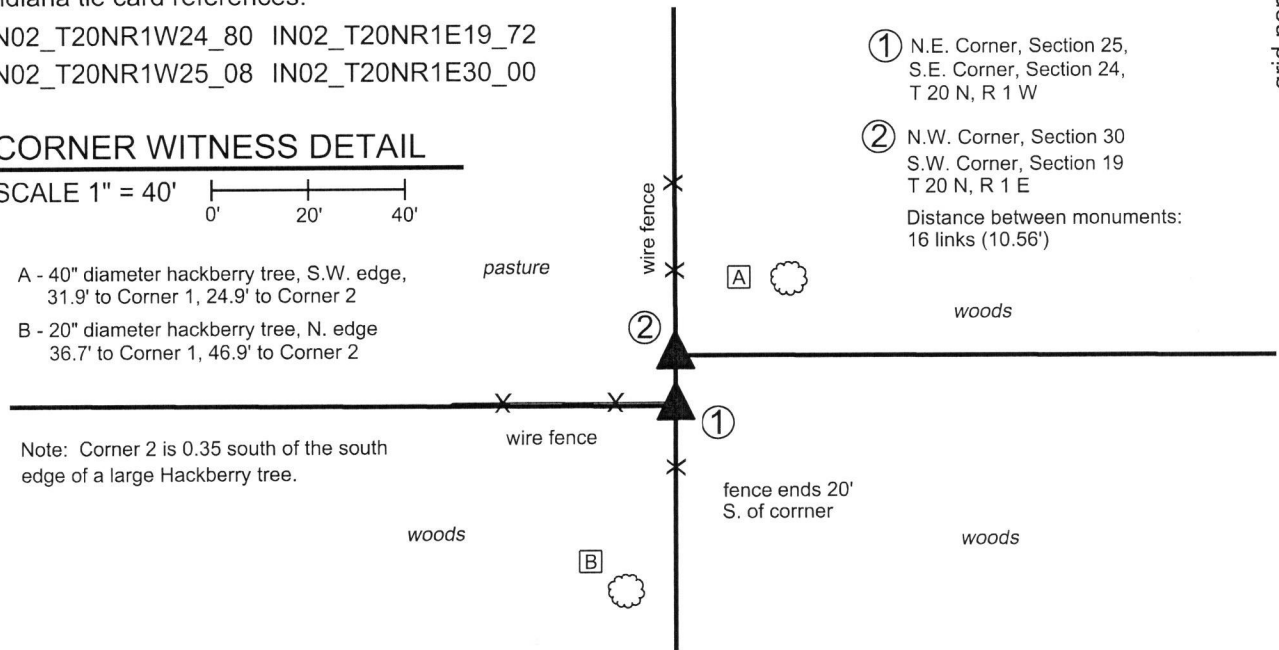
CORNER WITNESS DETAIL

SCALE 1" = 40'

A - 40" diameter hackberry tree, S.W. edge,
31.9' to Corner 1, 24.9' to Corner 2

B - 20" diameter hackberry tree, N. edge
36.7' to Corner 1, 46.9' to Corner 2

Note: Corner 2 is 0.35 south of the south
edge of a large Hackberry tree.



① N.E. Corner, Section 25,
S.E. Corner, Section 24,
T 20 N, R 1 W

② N.W. Corner, Section 30
S.W. Corner, Section 19
T 20 N, R 1 E

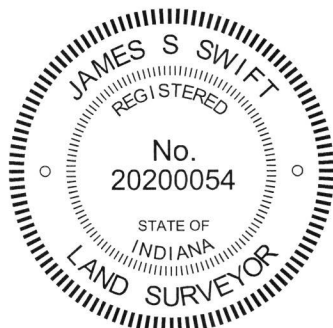
Distance between monuments:
16 links (10.56')

The Harrison monument was set in place of a stone found.

No specific descriptions of these corners were found in the BCS Surveyor's Record beyond the original establishment of the Corner 1 as a wood post set in 1819 and Corner 2 as a wood post set 16 links north of Corner 1 in 1822. No recent BCS tie cards were found nor were any surveys found in the Boone County Recorder's Office which reference the corners.

This corner was excavated on April 26 and May 8, 2019. Prior to excavation, a wood corner post was found at the intersection of ancient fences to the north, south and west, representing the visible evidence of Corner 1. No evidence of Corner 2 was visible beyond the fence bearing north from Corner 1. As found, the post was no longer attached to the ground with the top part of the post suspended amidst standing fencing and supported by a brace to the west. This portion of the post was separated from the base which remains in the ground. Excavation around the post revealed a stone which bore the characteristics of a purposely set corner stone found at the south edge of the post. The stone was slightly below flush. It was vertical and oriented in cardinal directions with a distinct high point. The stone measured 9 inches tall by 7 inches north-south by 5 inches east-west. No specific marks or etchings were found on the stone. No other stones or hard objects were found around the post. The position of the stone fits reasonably well with the relative positions of proximate corners. The adjacent deed descriptions call for the aliquot lines. No evidence was found to indicate that the stone was not in the position of the corner and the stone was accepted as the best available evidence of the corner. The stone was removed and replaced with a Harrison monument in the same position on May 8, 2019.

The position of Corner 2 was computed at 16 links north of the stone, on the line defined by Corner 1 and the standard corner 1/2 mile north (see BCS Corner NW-850-000). This position falls at the south edge of a large hackberry tree. Probing and minor excavation in this vicinity revealed no further evidence of the corner. As note above, no evidence of occupation was observed bearing east from the vicinity of Corner 2. The computed position was held for this corner and a 36 inch length of 5/8 inch diameter rebar with a metal cap stamped 'Boone County Surveyor' was set at this position on May 8, 2019.



Kenneth E. Hedge, County Surveyor

James S. Swift, IN LS 20200054
May 29, 2019

Washington Township Clinton Township

Section 24 T20N, R1W	Section 19 T20N, R1E
Section 25 T20N, R1W	Section 30 T20N, R1E

SECTION CORNER RECORD

NE 850-000

BOONE COUNTY SURVEYOR'S OFFICE

State Plane grid coordinates NAD83 (2011):

Corner 1: North: 1790492.80 East: 3124765.69 (U.S. survey feet)

Corner 2: North: 1790505.80 East: 3124765.64 (U.S. survey feet)

Corner 1: 5/8" rebar with metal cap stamped 'Boone County Surveyor' 4" a.g.

Corner 2: Harrison, 4" disk 'Section Corner' 4" a.g.

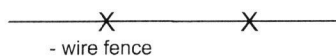
Indiana tie card references:

IN02_T20NR1W24_44 IN02_T20NR1E19_36

CORNER WITNESS DETAIL

SCALE 1" = 60'

0' 30' 60'

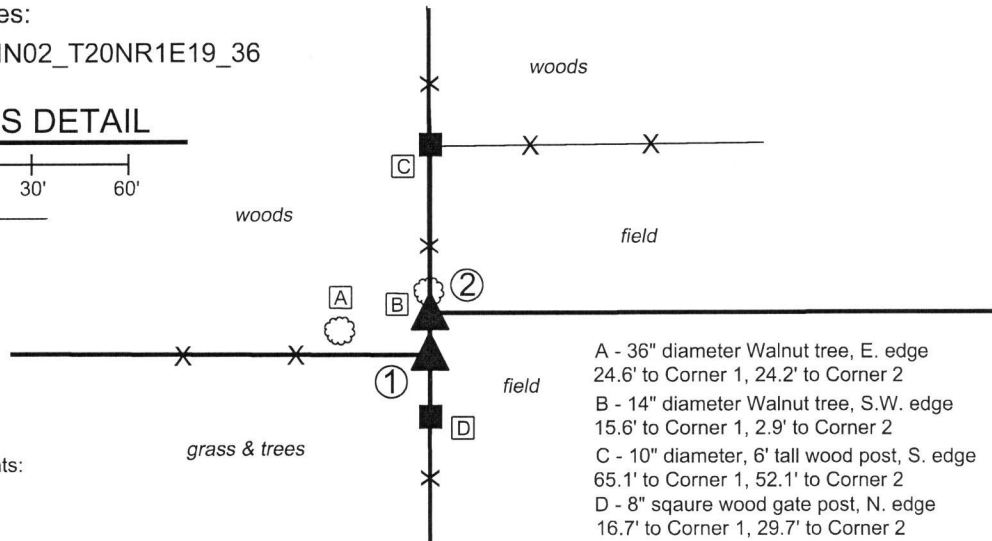


- wire fence

① East Quarter Corner,
Section 24,
T 20 N, R 1 W

② West Quarter Corner,
Section 19
T 20 N, R 1 E

Distance between monuments:
13.0 feet



A - 36" diameter Walnut tree, E. edge
24.6' to Corner 1, 24.2' to Corner 2
B - 14" diameter Walnut tree, S.W. edge
15.6' to Corner 1, 2.9' to Corner 2
C - 10" diameter, 6' tall wood post, S. edge
65.1' to Corner 1, 52.1' to Corner 2
D - 8" square wood gate post, N. edge
16.7' to Corner 1, 29.7' to Corner 2



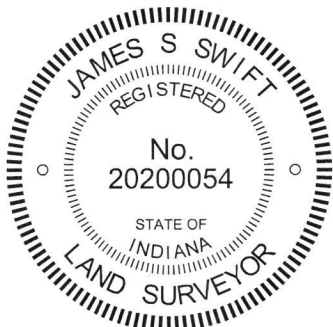
The rebar at Corner 1 was set in place of a rebar found. The Harrison monument at Corner 2 was set at a position computed with respect to Corner 1 and evidence to the east.

A BCS record dated April 26, 1884 states, with respect to Corner 1, "Reest. by measure. Rock 19, 13, 12 mark +. Rock mark 16,13,12 mark + 25 [links] west." No specific descriptions of Corner 2 were found in the BCS Surveyor's Record. Corner 2 is not an original corner of the Public Land System, set by the original federal surveyors.

Excavation and reconnaissance was performed at these corners on several occasions in April, 2019. The evidence of Corner 1, as accepted by private surveyors, was visible in the form of an uncapped 5/8 inch rebar at the south edge of a wood corner post at the intersection of fencing to the north, south and west. No evidence of Corner 2 was visible at the corner beyond a north-south fence, though substantial accessory evidence of Corner 2 was visible in the form of County Road 850 North to the east and two ancient wood corner posts, one of which is immediately west of the point where C.R. 850 North transitions into Horton Road and the other of which is approximately 807 feet east of Corner 2. Excavation and probing in the vicinity of both corners revealed numerous rocks, all of which appeared to be haphazardly placed and oriented, none of which appeared to have been purposely set to mark the corner. No stones were found around the corner post and rebar providing evidence of Corner 1. Extensive probing along a line 25 links west of the north-south fence did not reveal any found stones.

The rebar found adjacent to the post is shown as monumenting Corner 1 on several surveys by Ronald E. Wharry, LS #S0420, including a survey recorded as Instrument 9801448 in the Office of the Boone County Recorder. The corner post and attached fencing appears to match the type of fencing and posts for the fence to the north and west. The post itself does not appear to be ancient. It is noted that the 1884 record places Corner 1 at the midpoint of the corners to the north and south (see BCS corners NW-800-000 and NW-900-000) but the post and rebar are approximately 7 feet south of a point equidistant from these corners. As the post is not ancient and the stones called in the 1884 record were not found, the rebar was accepted as the best available evidence of the corner. The rebar was removed and found to be 24 inches long. It was replaced with a 36 inch long rebar, partially set in concrete, in the same position.

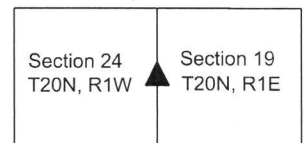
The position of Corner 2 was computed with respect to the evidence noted above, established at the prolongation of a line extended west from a nail providing evidence of the center quarter corner of section 19 through both of the aforementioned posts. The corner was established at the intersection of this line with the range line as defined by the above noted standard corners 1/2 mile north and south. This position falls along the north-south fence 13 feet north of Corner 1. It is noted that the average closing distance, per the federal notes for the corners to the north and south, is 17.5 links or 11.55 feet, but this distance is not specifically referenced in entries of the BCS Surveyor's Record. It is also noted the position of Corner 2, as so established, works within approximately one-half foot of a position computed with respect to the calls and corner monumentation for properties between the range line and Horton Road, per Instrument 0115785 and other matching documents. A Harrison monument was set at the computed position of Corner 2. Both corners were monumented on May 8, 2019.



Kenneth E. Hedge
Kenneth E. Hedge, County Surveyor

James S. Swift
James S. Swift, IN LS 20200054
May 29, 2019

Washington Township Clinton Township



SECTION CORNER RECORD

NE 800-100

BOONE COUNTY SURVEYOR'S OFFICE

State Plane grid coordinates NAD83 (2011):

North: 1787880.69 East: 3129649.47 (U.S. survey feet)

Type of monument: Harrison, 4" disk 'Section Corner'

Depth: Two inches above surrounding ground

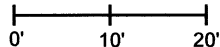
Indiana tie card references:

IN02_T20NR1E19_80 IN02_T20NR1E20_72

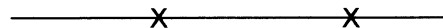
IN02_T20NR1E30_08 IN02_T20NR1E29_00

CORNER WITNESS DETAIL

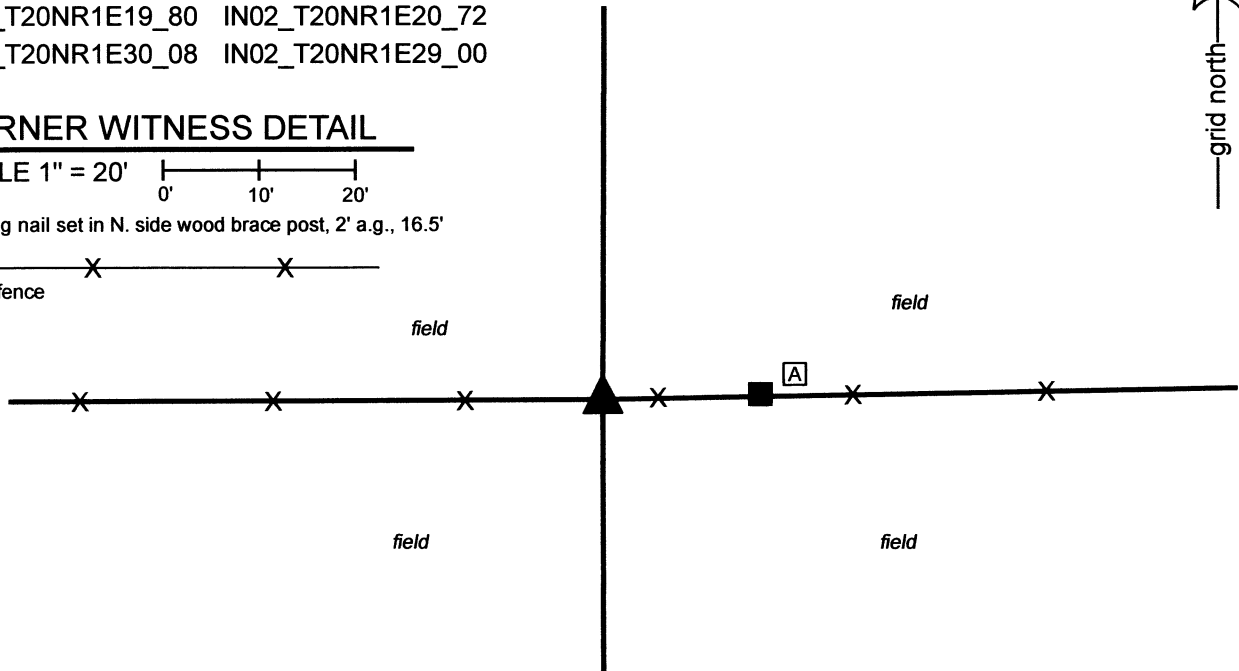
SCALE 1" = 20'



A - Mag nail set in N. side wood brace post, 2' a.g., 16.5'



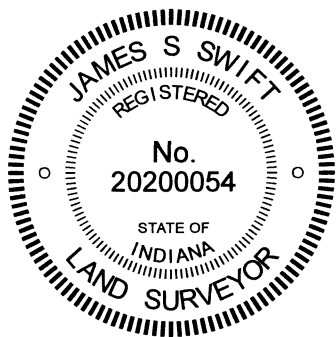
- wire fence



The Harrison monument was set 1 rod (16.5 feet) west of a wood brace post.

No specific descriptions of this corner were found in the BCS Surveyor's Record beyond the original establishment of the corner as a wood post in 1822.

No recent tie cards were found referencing this corner, nor were any references to this corner found in surveys recorded in the Office of the Boone County Recorder. Several surveys by Jerry L. Carter, LS No. S0350, were found which hold a post at the southwest corner of the east half of the southwest quarter of Section 20 (see Survey Book 12, pages 67, 69, 70, Boone County Recorder). The subject corner is referenced in the deeds for the Bowman properties to the south, southeast and southwest (see Deed Record 235, page 593 and Instrument 9904593). An overall description in Instrument 9904593 specifically calls the corner as being 590.88 feet east of the northwest corner of the Bowman property. No specific post, stone, or other monument was found marking the subject corner during reconnaissance on several occasions. However, it was observed that a standing wood brace post is precisely 16.5 feet (1 rod) plus the deed distance of 590.88 feet east of an ancient wood corner post providing the visible evidence of the northwest corner of the Bowman property. It was also observed that holding a computed position for the subject corner which is 1 rod west of the brace post, the wood post referenced on the Carter surveys as marking the southwest corner of the east half of the southwest quarter of Section 20 falls within 2 feet total (1.5 feet east-west) of the midpoint of a straight line connecting the computed position with the southeast corner of said southwest quarter of Section 20. Hence, a position 1 rod west of the brace post works precisely with the deed distance and post at the northwest corner of the Bowman property and works quite well with the post held by Carter at the sixteenth corner to the east. It is noted that brace posts have been observed to be situated at 1 rod from corner posts at numerous other corners throughout the county. Manual excavation and probing in the vicinity of the brace post and computed position on April 4th and 12th, 2023 did not reveal further evidence of the corner. The corner was established in the east-west fence line, in-line with and 16.5 feet west of the brace post to the east. A Harrison monument was set at this position on April 12, 2023.



Carol Cunningham
Carol Cunningham, County Surveyor

James S. Swift
James S. Swift, IN LS 20200054
April 26, 2023

Clinton Township

Section 19 T20N, R1E	Section 20 T20N, R1E
Section 30 T20N, R1E	Section 29 T20N, R1E

SECTION CORNER RECORD

BOONE COUNTY SURVEYOR'S OFFICE

NE 900-000

State Plane grid coordinates NAD83 (CORS96):

Corner 1: North: 1793138.65 East: 3124756.47 (U.S. survey feet)

Corner 2: North: 1793150.42 East: 3124756.44 (U.S. survey feet)

Type of monument: Harrison, 4" disk 'Section Corner'

Depth: six inches below adjacent gravel road surface

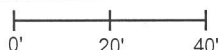
Indiana tie card references:

IN02_T20NR1W13_80 IN02_T20NR1E18_72

IN02_T20NR1W24_08 IN02_T20NR1E19_00

CORNER WITNESS DETAIL

SCALE 1" = 40'



① S.E. Corner, Section 13
N.E. Corner, Section 24
T 20 N, R 1 W

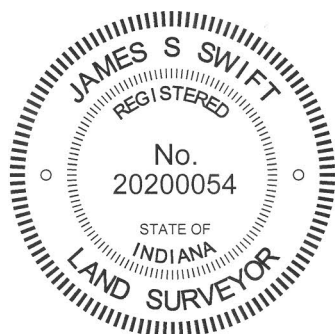
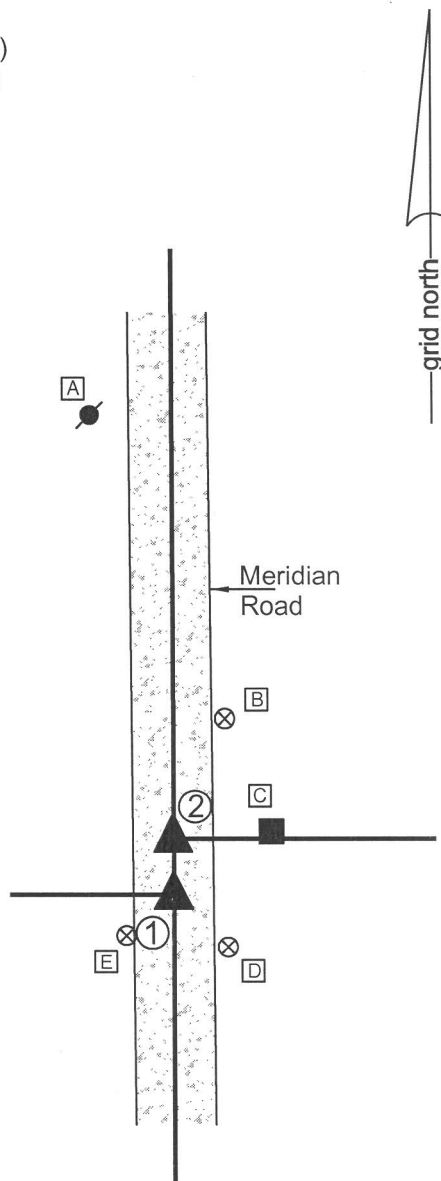
② S.W. Corner, Section 18
N.W. Corner, Section 19
T 20 N, R 1 E

Distance between corners = 11.77'

- A - Mag nail set in S.E. side power pole, 2' a.g., 100.8' to corner 1, 89.2' to corner 2
- B - Boone County witness mark, flush, 38.4' to corner 1, 27.3' to corner 2
- C - Mag nail set in W. side wood post, 1' a.g., 22.5' to corner 1, 18.1' to corner 2
- D - Boone County witness mark, flush, 15.7' to corner 1, 25.3' to corner 2
- E - Boone County witness mark, flush, 13.1' to corner 1, 22.5' to corner 2

Boone County witness mark is a 3/8" diameter x 2' long rebar bearing a metal cap stamped "Boone County Witness Point."

See page 2 for written documentation and explanation of findings.



Kenneth E. Hedge
Kenneth E. Hedge, County Surveyor

James S. Swift
James S. Swift, IN LS 20200054
March 27, 2015, page 1 of 2

Sugar Creek Township	Washington Township
Section 13 T20N, R1W	Section 18 T20N, R1E
Section 24 T20N, R1W	Section 19 T20N, R1E

SECTION CORNER RECORD

NE 900-000

BOONE COUNTY SURVEYOR'S OFFICE

The Harrison monument at corner two (SW Sec. 18, NW Sec. 19, T20N, R1E) was set over a stone found and the Harrison monument at corner one (SE Sec. 13, NE Sec. 24, T20N, R1W) was set in place of a portion of an ancient wood post / wood stake found.

Corner one was set in 1819, an original corner defining the Second Principal Meridian. Corner two was set in 1819, 19 links north of corner one.

Two matching records in the BCS Surveyor's record dated February 25, 1879 address this set of corners. With respect to the southeast corner of Section 13, T 20 N, R 1 W (corner one), the record states "Marked rock to place at corner to Sec. 18 & 19, 19 lks North." With respect to the southwest corner of Section 18, T 20 N, R 1 E (corner two), the record states "Found point which marked by chopping notch in crosslaying also marked (+) rock 16.9.6 for parties to set." A BCS tie card dated July 23, 1975 and referencing the southwest corner of section 18 states "No stone found - set rod" and shows the corner in the center of the N-S roadway in line with a fence to the east.

This corner was excavated on July 9, 2014. Corner two was excavated first. Prior to excavation, an iron rod was found 2 inches deep in the gravel road, bent at the top and in line with a post and occupation line to the east. The iron rod was removed and found to be smooth shafted and 18 inches long. The position of the rod fit with the 1975 tie to the post on the east side of the road. Excavation revealed a thin piece of wood, 12 inches long by 5 inches wide found at 18 inches deep in the general vicinity of the rod. Further excavation revealed a stone found at 2 feet deep, south and west of the rebar. The stone was vertical and matched the dimensions described in the 1879 record, being 16 inches tall by 6 inches by 9 inches. The stone was not oriented in cardinal directions, as would be expected if had been set by the County Surveyor. However, the record states that the stone was marked "for parties to set" which indicates that the land owners were responsible for actually placing the stone in the ground. The top of the stone was oriented in a NE/SW orientation but it was noted that the stone had a distinctly flat and vertical side facing east. Given that this is the corner to sections 18 and 19, defining the line to the east, it is logical that the land owners would orient the stone in such a manner. Two other features of the stone were notable: a wood stake was found at the northeast edge of the stone and the stone itself appeared to be set deeper in the ground than would be expected, given the general lay of the land. Both of these features are discussed below.

After the stone was found, a probable location for corner one was determined and excavation was performed at this location. Here, a piece of wood was found at 20 inches deep. This piece of wood appeared to be a fragment of an old post being squared off on the sides and approximately 4 inches by 3 inches by at least 4 feet long. The piece of wood was found embedded in the clay layer below the road and lying perpendicular to the north-south road. An 18 inch fragment of the post was removed from the road, measured and analyzed. The remainder of the post was left in the ground as found. The full length of the post was not determined and it appeared to extend yet further east and west than that portion which was exposed. Careful analysis of the post indicates that in the approximate center of the fragment which was removed, hence directly south of the stone, a vague notch is visible. The notch is not deep and was not observed at the time the post was found. However, after the post dried in the open air and the surface of the post cracked slightly, the notched part of the post became apparent. One edge of the notch bears distinct evidence of having been chiseled. The center of the post was found at 11.8 feet south of the top, center of the stone. The record closing distance is 19 links, or 12.54 feet. This distance is also stated in the 1879 records. It is noted that while the distance between the post and stone was found to be less than the record distance, the distance measured between post and the fragments of the wood stake at the northeast edge of the stone at corner two was very close to the record distance.

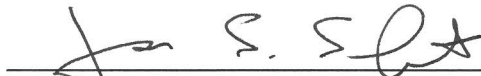
Analysis of the record and the found evidence yields the following conclusions. It is believed that the wood post found under the road and discussed above represents the monument referred to as the "crosslaying" in the 1879 record. The object was found lying perpendicular to the meridian line, or 'crosslaying' the meridian line, with a notch evidently chopped into it. The notations in the BCS Surveyor's Record indicate that this 'crosslaying' was found at the closing corner (corner two), not the standard corner (corner one.) It is believed that the crosslaying is misreferenced to the wrong section. Notably, it can be proven that the record immediately below the reference to the crosslaying, made on the same date, refers to an object in the wrong section. Hence, it appears the record keeping was problematic on that day with respect to which corner was which and what section was what. This is not particularly surprising, given that there are two corners, 12 feet apart, which represent the corners for four different sections in two different ranges, east and west of the 2nd Principal Meridian. With respect to the stone found at the closing corner, several observations are noted: The record clearly indicates that the stone was marked by the County Surveyor but not set by him. The stone was found oriented in a different manner than is typical of corner stones set by the County Surveyor but in a manner which makes sense given that the landowners who set the stone were marking the line to the east, as noted above. A wood stake was found at the northeast corner of the stone. The stone is slightly closer to the 'crosslaying' than the record 19 links, but the wood stake was quite close to that record distance from the 'crosslaying.' It is the opinion of the undersigned that the most probable occurrence on February 25, 1879 was that the County Surveyor or his crew found the post which they referred to as the 'crosslaying' defining the north-south position of the standard corner, chopped a mark in it to define the east-west position of that corner and set a wood stake to mark the position of the closing corner. At some subsequent date, the interested 'parties' set the stone next to the wood stake, leaving the stake in place, and setting the stone in a manner inconsistent with that typically adhered to by the County Surveyor. If this is true, it would hold, then, that the stake marks the true position of corner two and that the stone is slightly south and west of the corner. However, given the inherent conjecture of the above statement and the presence of the apparently undisturbed stone, the stone was held as marking the closing corner. The standard corner was set at the north-south position of the found 'crosslaying' on the prolongation of a line connecting the stone with the standard corner approximately one half mile to the north, where the meridian line crosses the county boundary. Hence, the meridian line bends at the standard corner, as per the original federal procedures, and the distance between the two monuments is slightly less than the record closing of 19 links. As the notch on the crosslaying was not observed during the original fieldwork, it is not possible to state whether the Harrison monument at the standard corner is in the exact position of the notch. In light of the above conclusions, it is thought to be most likely that the Harrison monument is slightly west of the position of the notch on the crosslaying.

Two other features of this corner and the monumentation found are notable. Although the record clearly states that the stone was "marked (+)," no marks were found on the stone. Perhaps a mark was present but was sufficiently vague to prevent detection in the field on July 9, 2014. As stated above, the notch on the crosslaying post was not observed on that date but was subsequently observed upon more careful inspection and after changes in the character of the surface of the wood. As the stone was left in place, buried under the road, with a substantial monument placed above it, further inspection was not practical. The dimensions of the stone precisely matched the 16.9.6 dimensions noted in the 1879 record.

The other feature of this corner which merits comment is with respect to the wood post, accepted as being the 'crosslaying.' This term has not been found mentioned elsewhere in the BCS Surveyor's Record, but as discussed above, fits well with the observation that the post was found laying perpendicular to and across the meridian line. The age of the post is not known, but apparently it was already present in 1879. As noted above, the post is 3 inches by 4 inches by at least 4 feet long. This is quite small for a fence post and rather large for a survey stake but is similar to the dimensions for a monument proscribed by Edward Tiffin's Instructions to the federal Deputy Surveyors, in force at these corners were originally established. It is possible that this post represents the original wood post set to mark this corner in 1819 during the original federal survey of the Second Principal Meridian and the ranges to the west. No further proof of this offered, but the conjecture is sufficiently interesting to merit mention.



Kenneth E. Hedge, County Surveyor



James S. Swift, IN LS 20200054 March 27, 2015, page 2 of 2

PHOTOGRAPHIC DOCUMENTATION

Date of photography: July 9, 2014

View prior to excavation, looking across the corners and south along Meridian Road.



View prior to excavation, looking north along Meridian Road from above the closing corner.



The stone found at the closing corner. The chaining pin is stuck in the fragments of wood stake found at the northeast corner of the stone.



View from above the stone at the closing corner looking east along the field division line.



View of the stone found at the closing corner from above and northeast.



View of the stone found at the closing corner from above and east/northeast. Note the flat, vertical face of the east side of the stone.



For details and documentation, refer to related sheet "Section Corner Record."

PHOTOGRAPHIC DOCUMENTATION

Date of photography: July 9, 2014

The stone found at the closing corner from above and west.



The eastern portion of the "crosslaying" as found situated perpendicular to the meridian line at the standard corner.



The east and west portions of the "crosslaying." The western portion had been removed and placed back in approximately the original position.



View from the north, looking across the stone at corner 2 and the area of excavation at corner 1.



The west portion of the "crosslaying." Note that the clay in which this piece of wood had been embedded 'popped' off the wood upon excavation, leaving the wood looking remarkably clean, given that it was embedded in clay as originally found moments earlier.



For details and documentation, refer to related sheet "Section Corner Record."

SECTION CORNER RECORD

NE 900-050

BOONE COUNTY SURVEYOR'S OFFICE

State Plane grid coordinates NAD83 (2011):

North: 1793155.39 East: 3127044.70 (U.S. survey feet)

Type of monument: Harrison, 4" disk 'Section Corner'

Depth: Three inches above adjacent ground

Indiana tie card references:

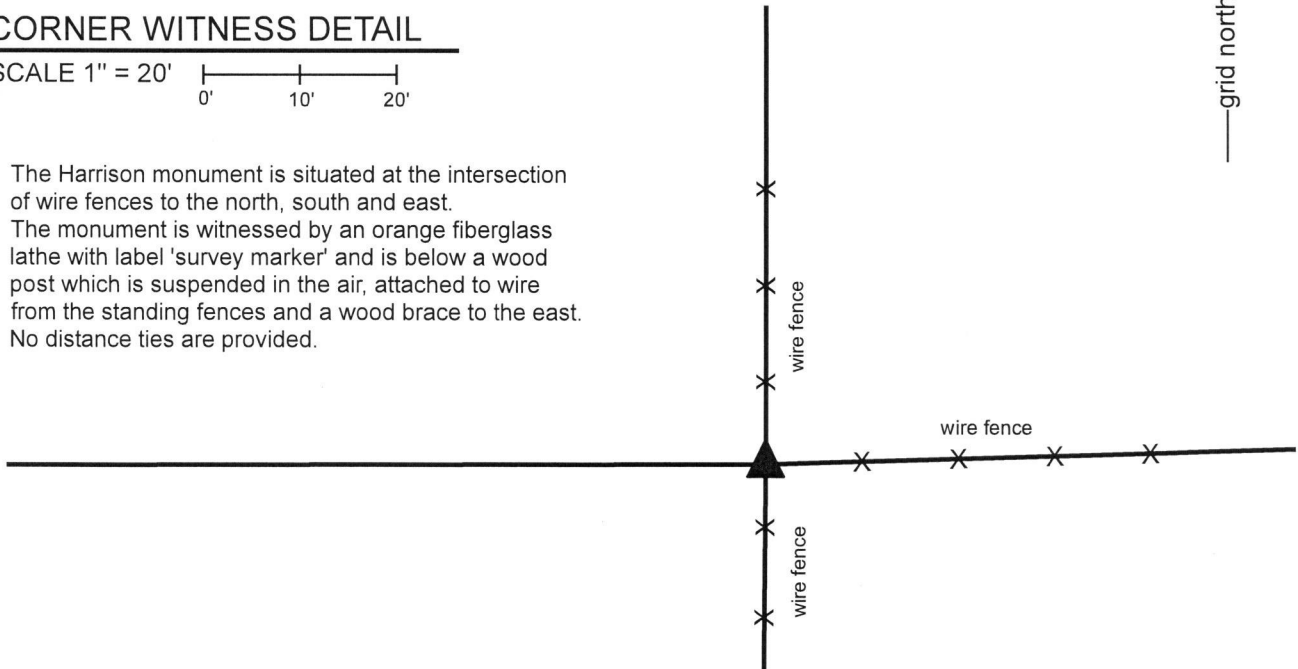
IN02_T20NR1E18_76 IN02_T20NR1E19_04



CORNER WITNESS DETAIL

SCALE 1" = 20'

The Harrison monument is situated at the intersection of wire fences to the north, south and east. The monument is witnessed by an orange fiberglass lathe with label 'survey marker' and is below a wood post which is suspended in the air, attached to wire from the standing fences and a wood brace to the east. No distance ties are provided.



The Harrison monument was set in the position of a wood post found.

A BCS record of April 20, 1870 states, with respect to this corner, "Reestablished from Sugar (green yet) Set two rocks. One 5 1/2.5 by 4 in +. Top One 12.10.8 marked +." No recent BCS tie cards were found referencing this corner.

Excavation was performed at this corner on May 10, 2018. Prior to excavation, a wood corner post was found at the intersection of fences to the north, south and east. The post, as found, was not attached to the ground and was suspended in the air attached to the wire of the standing fence to the north and south and attached to standing fence and a wood brace to the east. Excavation below and in the immediate vicinity of the suspended post revealed two stones found, neither of which matched the dimensions of the stones described in the 1870 record, nor appeared to have been purposely set to mark the corner. Further excavation revealed no additional evidence of the corner. The position of the post fits well with evidence of proximate corners relative to the original federal dimensions for the section and township, including the short "half mile" between this corner and the closing corner on the meridian line to the west. The standing fences to the north, south and east were accepted as the best available evidence of the corner. The original position of the post was estimated with respect to the alignment of the fences, the brace to the east, the position of the suspended post and also wire found in the ground indicating former fencing to the west. A Harrison monument was set at this position. The post was left in place, suspended over the corner.

This corner was originally established as a wood post in 1822.



Kenneth E. Hedge, County Surveyor

James S. Swift, IN LS 20200054
May 16, 2018

Clinton Township

Section 18
T20N, R1E

Section 19
T20N, R1E