

# SECTION CORNER RECORD

NE 200-000

## BOONE COUNTY SURVEYOR'S OFFICE

State Plane grid coordinates NAD83 (2011):

Corner 1: North: 1756158.94 East: 3124834.89 (U.S. survey feet)

Corner 2: North: 1756201.95 East: 3124834.87 (U.S. survey feet)

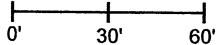
Monument: 5/8" diameter rebar, 30" long, with aluminum cap stamped 'Boone County Surveyor', 1 inch up (Corner 1), flush (Corner 2)

Indiana tie card references:

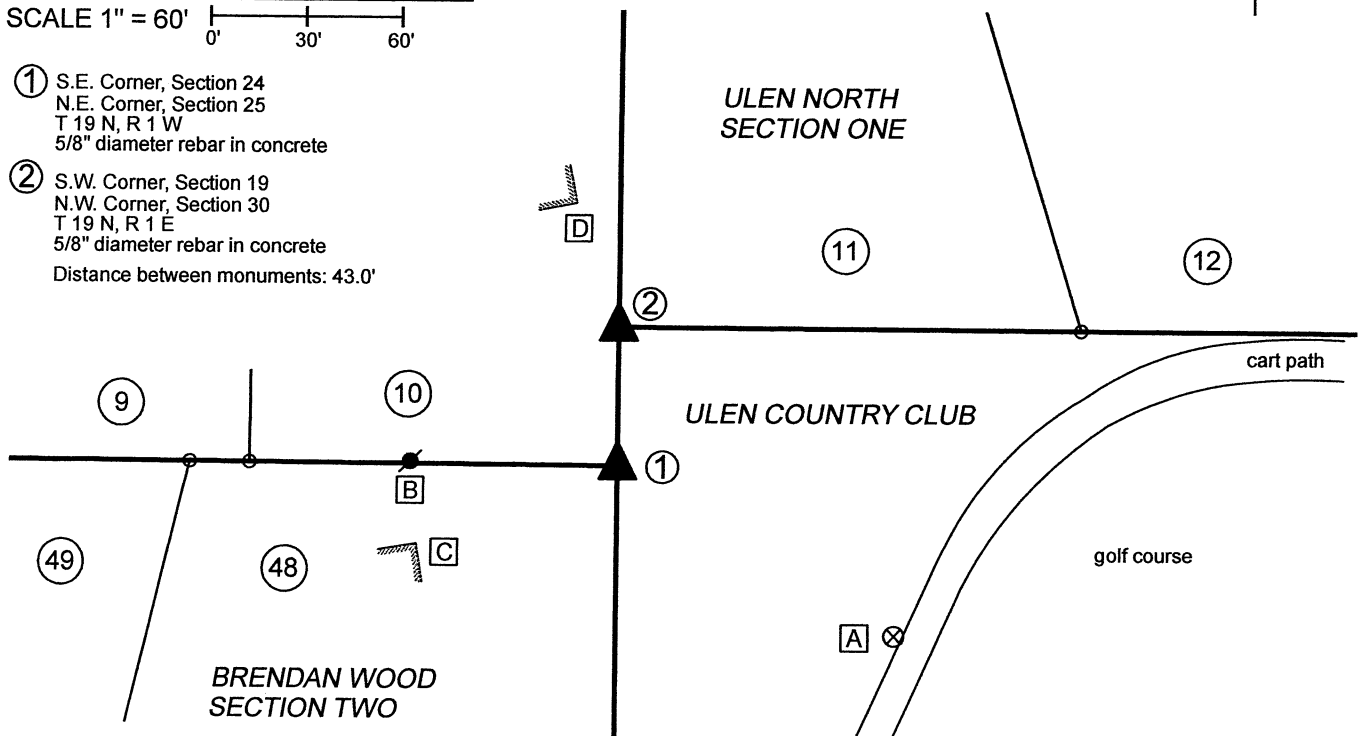
IN02\_T19NR1E19\_72 IN02\_T19NR1W24\_80

IN02\_T19NR1W25\_08 IN02\_T19NR1E30\_00

### CORNER WITNESS DETAIL

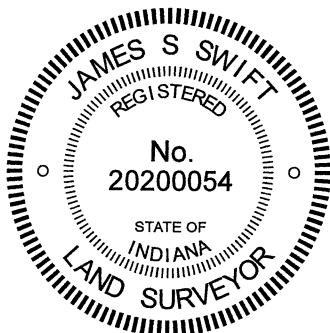
SCALE 1" = 60' 

- ① S.E. Corner, Section 24  
N.E. Corner, Section 25  
T 19 N, R 1 W  
5/8" diameter rebar in concrete
- ② S.W. Corner, Section 19  
N.W. Corner, Section 30  
T 19 N, R 1 E  
5/8" diameter rebar in concrete  
Distance between monuments: 43.0'



SEE PAGE 2 FOR WRITTEN REPORT

- A - Boone County witness mark, flush, 101.4' to corner 1, 129.1' to corner 2
- B - Mag nail set in N. side power pole, 2' a.g., 64.7' to corner 1, 77.1' to corner 2
- C - N.E. corner brick house, 2' a.g., 67.3' to corner 1, 92.3' to corner 2
- D - S.E. corner brick house, 2' a.g., 82.9' to corner 1, 41.1' to corner 2



*Kenneth E. Hedge*  
Kenneth E. Hedge, County Surveyor

*James S. Swift*  
James S. Swift, IN LS 20200054

December 9, 2020 Page 1 of 2

Center Township

Section 24 T19N, R1W	Section 19 T19N, R1E
Section 25 T19N, R1W	Section 30 T19N, R1E

# SECTION CORNER RECORD

# NE 200-000

## BOONE COUNTY SURVEYOR'S OFFICE

State Plane grid coordinates NAD83 (2011):

Corner 1: North: 1756158.94 East: 3124834.89 (U.S. survey feet)

Corner 2: North: 1756201.95 East: 3124834.87 (U.S. survey feet)

Monument: 5/8" diameter rebar, 30" long, with aluminum cap stamped 'Boone County Surveyor', 1 inch up (Corner 1), flush (Corner 2)

Indiana tie card references:

IN02\_T19NR1E19\_72 IN02\_T19NR1W24\_80

IN02\_T19NR1W25\_08 IN02\_T19NR1E30\_00

The rebars with metal caps at both corners were set with respect to other monuments and evidence found, as shown on the plats of the Brendan Wood and Ulen North subdivisions.

At Corner 1, two different monuments were found ostensibly marking the corner. The obvious monument, visible and above-ground, was a 5/8-inch rebar with a yellow plastic cap, markings illegible, protruding 4 inches out of the ground. The other monument was a 1/2-inch diameter rebar found 7 inches below grade. The 1/2 inch rebar was located 1.7 feet south on 0.4 feet west of the 5/8 inch rebar. At Corner 2, a 1/2-inch diameter rebar was found 4 inches below grade.

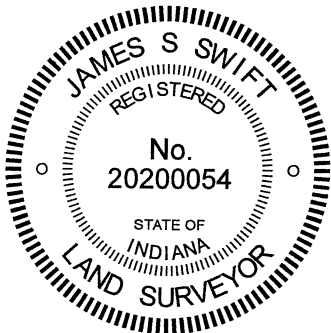
Corner 1 represents the northeast corner of Brendan Wood Second Section, as recorded in Plat Book 3, page 142 in the Office of the Boone County Recorder. This plat was certified by Robert Scherschel, Indiana LS No. 3907 on November 20, 1963. The adjoining plat to the north is Ulen North, Section 1, recorded in Plat Book 6, page 24 and certified by Gus G. Schulz, Indiana LS No. 10292 on August 24, 1977.

Corner 1 represents the southeast corner of Lot 10 in Ulen North and Corner 2 represents the southwest corner of Lot 11, being on the east line of Lot 10. It is noted that Ulen North straddles the section line and Second Principal Meridian, while Brendan Wood Second Addition is entirely in Section 25, T19N, R1W. The Ulen North plat shows both section corners, with Corner 2 shown as being 44.08 feet north of Corner 1. The found 1/2-inch diameter rebars are believed to mark the corners as they were set when Ulen North Section One was laid out or at the time of the re-plot of Lots 1 and 18, certified by Robert Hutchison, Indiana LS No. 10057 on June 4, 1979, as recorded in Plat Book 6, page 39. However, based on retracement of lot corners in both subdivisions, it appears Ulen North overlapped slightly onto the existing Brendan Wood lots. As retraced with respect to monuments found marking numerous lot corners, it also appears that the existing, visible 5/8-inch rebar with broken plastic cap was slightly north of the northeast corner of Brendan Wood Section 2 as originally laid out. Overall, approximately 0.4 foot uncertainty in all directions may be attributed to retraced position of the northeast corner of Brendan Wood Section 2. But no monuments found marking lot corners to the west indicated a position quite as far north as the existing, visible, 5/8-inch rebar. This monument is believed not to be original and also appears that it may have been moved at some point in the past. The cap appeared to have been smashed down onto the shaft of the rebar and the rebar was quite loose in the ground, being easily pulled by hand. The rebar was 20 inches long and had been protruding out of the ground. This was anything but a permanent monument, firmly fixed to the ground.

Based on the relative positions of other found monuments, the position of Corner 1 was established at platted distance (286.65 feet) north of a rebar with metal cap at the southeast corner of Lot 47, Brendan Wood Second addition, at the same easting as the found 5/8 inch rebar and 0.6 foot south of the position of the found 5/8-inch rebar. The east dimension of this position is slightly east of that which was computed with respect to monuments found marking lot corners to the west but slightly west of that which was computed with respect to monuments found marking lot corners to the south. As noted above, uncertainties of 0.4 foot in all directions may be attributed to the computed position. The 5/8-inch rebar was removed and a 30-inch length of 5/8-inch rebar was set in concrete at the computed position for the corner. The 1/2-inch diameter rebar was left in place, 0.4 foot west and 1.1 feet south of the corner.

The position of Corner 2 was established on the meridian line as defined by Corner 1 and a Harrison monument marking the east quarter corner of Section 24, T19N, R1W (seek BCS Corner NW-250-000), at the same northing as the found 1/2-inch rebar. This position falls 0.6 foot east of the 1/2-inch rebar. A 30-inch length of 5/8-inch rebar was set in concrete at this position. Both corners were set on November 20, 2020. Due to the presence of numerous underground utilities in the immediate vicinity of the corners, no substantial excavation was performed and Harrison monuments were not set.

It is noted that the closing offset distance reported by the original federal notes for T19N, R1E was 63 links or 41.58 feet. The offset shown on the plat of Ulen North Section 1 is 44.08 feet. The separation of the two corners as established herein is 43.0 feet.



*Kenneth E. Hedge*  
Kenneth E. Hedge, County Surveyor

*James S. Swift*  
James S. Swift, IN LS 20200054

December 9, 2020 Page 2 of 2

Center Township

Section 24 T19N, R1W	Section 19 T19N, R1E
Section 25 T19N, R1W	Section 30 T19N, R1E

# SECTION CORNER RECORD

## BOONE COUNTY SURVEYOR'S OFFICE

NE 200-100

State Plane grid coordinates NAD83 (CORS96):

North: 1756190.19 East: 3129814.17 (U.S. survey feet)

Type of monument: Harrison, 4" disk 'Section Corner'

Depth: One inch below adjacent road surface

Indiana tie card references:

IN02\_T19NR1E19\_80 IN02\_T19NR1E20\_72

IN02\_T19NR1E30\_08 IN02\_T19NR1E29\_00

### CORNER WITNESS DETAIL

SCALE 1" = 40'

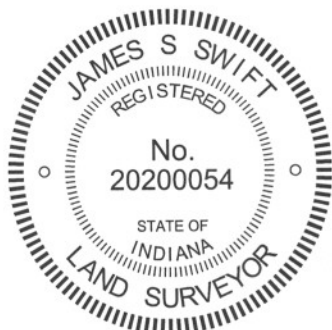
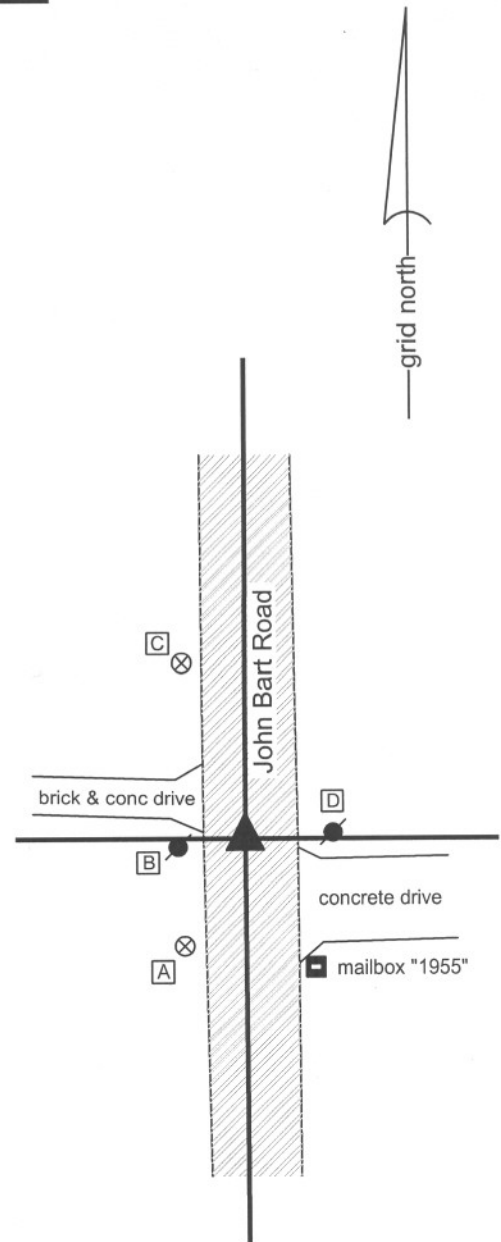
- A - Boone County witness mark, flush, 25.63'
- B - Mag nail found in S. side power pole, 3 in. a.g., 14.47'
- C - Boone County witness mark, flush, 38.88'
- D - Mag nail found in W. side power pole, 1' a.g., 16.59'

Boone County witness mark is a 3/8" diameter x 2' long rebar bearing a metal cap stamped "Boone County Witness Point."

The harrison monument was set in place of a harrison monument found. No specific descriptions of this corner were found in the BCS Surveyor's Record. A BCS tie card dated January 30, 1968 states "no stone found." A BCS tie card dated August 2, 2005 shows the corner as a harrison monument with no documentation of source.

This corner was excavated on June 26, 2012. Prior to excavation, a harrison monument was found at 2 inches below grade. Excavation revealed a vertical section of railroad rail found at 11 inches deep. The harrison monument had been 2 inches west of the position of the top of the rail. Excavation of an area extending 2.5 feet N, 2.5 feet S, 3 feet E and 2 feet W of the harrison/rail revealed no further evidence of the corner. Excavation was performed to a minimum of 17 inches, at least 3 inches into the clay layer found below the road bed. The top of the rail, as found, was held as marking the corner. The rail was removed during excavation and was replaced with a harrison monument in the same position.

This corner was originally established as a wood post in June, 1822.



*Kenneth E. Hedge*  
 Kenneth E. Hedge, County Surveyor

*James S. Swift*  
 James S. Swift, IN LS 20200054  
 January 15, 2013

Center Township

Section 19 T19N, R1E	Section 20 T19N, R1E
Section 30 T19N, R1E	Section 29 T19N, R1E

# SECTION CORNER RECORD

NE 250-100

## BOONE COUNTY SURVEYOR'S OFFICE

State Plane grid coordinates NAD83 (2011):

North: 1758836.88 East: 3129820.07 (U.S. survey feet)

Type of monument: Harrison, 4" disk 'Section Corner'

Depth: Flush with pile to east, six inches above ground to west

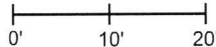
Indiana tie card references:

IN02\_T19NR1E19\_44 IN02\_T19NR1E20\_36



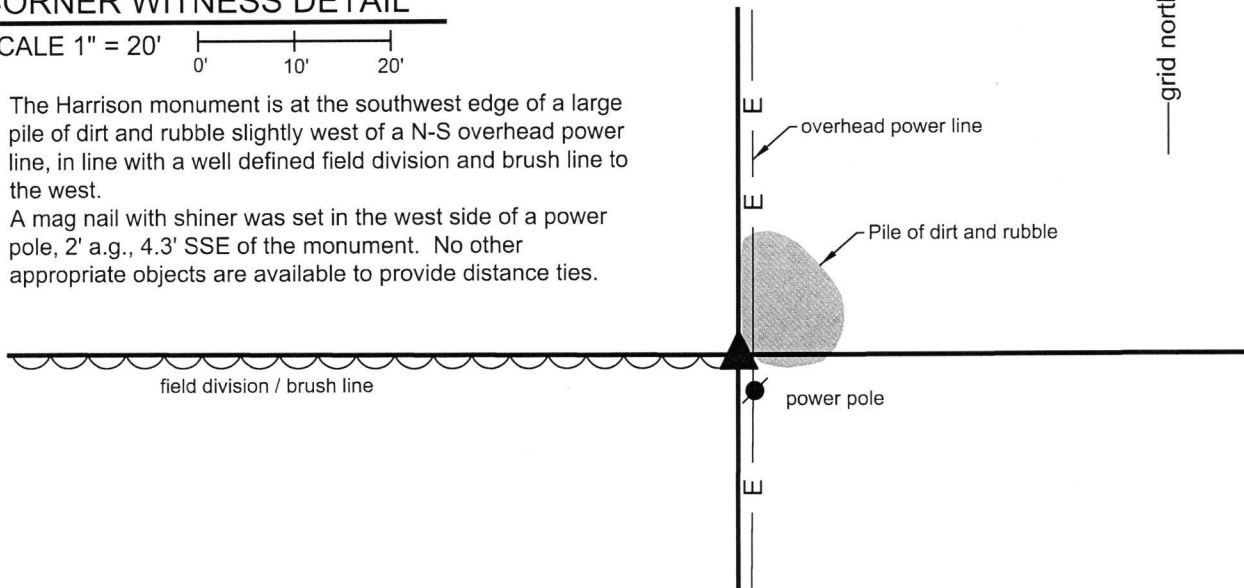
### CORNER WITNESS DETAIL

SCALE 1" = 20'



The Harrison monument is at the southwest edge of a large pile of dirt and rubble slightly west of a N-S overhead power line, in line with a well defined field division and brush line to the west.

A mag nail with shiner was set in the west side of a power pole, 2' a.g., 4.3' SSE of the monument. No other appropriate objects are available to provide distance ties.

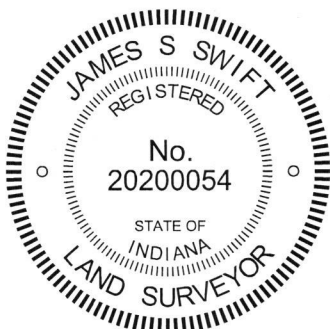


The Harrison monument was set over a 1/2 inch diameter rebar with cap stamped 'Dodge SO288.'


A BCS record dated October 2-5, 1857 states, with respect to this corner, "Reestablished. Set Rock 13x17." No recent BCS tie cards were found referencing this corner.

This corner was monumented on October 20, 2017. On first sight, it was clearly evident that significant disturbance has occurred in the vicinity of the corner. It appears that a large amount of material including dirt, rocks and fencing has been bulldozed into a pile in the immediate vicinity of the corner. The position of the corner was computed from information shown on a survey by Timothy A. Beyer, LS 20100036, recorded as Instrument 0411161 in the Office of the Boone County Recorder. This survey is the base survey for the plats of the Auburn Meadows subdivisions in the northeast quarter of section 19. The Beyer survey shows the subject corner as being a Dodge capped rebar found at the intersection of a fence to the north and a short section of fence to the west. The rebar was found at the west edge of the aforementioned pile of material, approximately 1 foot deep, buried under dirt and a variety of small stones. Wood which appeared to be the remnants of an old post were found adjacent to the rebar. It appeared that the rebar had been set at the southeast edge of the post. Several rocks were found, most of which appeared to have been transported there as part of the creation of the large pile of material. The rock described in the 1857 record was not found. The rebar was accepted as marking the corner. The rebar was left in place, driven slightly deeper into the ground and a Harrison monument was set directly above the rebar. The top several inches of the rebar were encased in concrete, along with the tops of three additional two-foot sections of 5/8 inch diameter rebar which were installed to ensure stability of the monument. The monument is flush with the part of the rubbish pile immediately adjoining it to the east, below most of the pile, and up to six inches above the adjoining ground to the west.

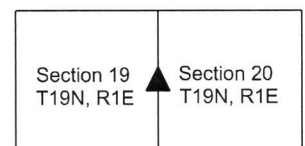
This corner was originally established as a wood post in 1822.



  
Kenneth E. Hedge, County Surveyor

  
James S. Swift, IN LS 20200054  
November 15, 2017

Center Township



# SECTION CORNER RECORD

## BOONE COUNTY SURVEYOR'S OFFICE

NE 300-050

State Plane grid coordinates NAD83 (CORS96):

North: 1761488.52 East: 3127177.76 (U.S. survey feet)

Type of monument: Harrison, 4" disk 'Section Corner'

Depth: One inch below adjacent road surface

Indiana tie card references:

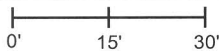
IN02\_T19NR1E18\_76

IN02\_T19NR1E19\_04



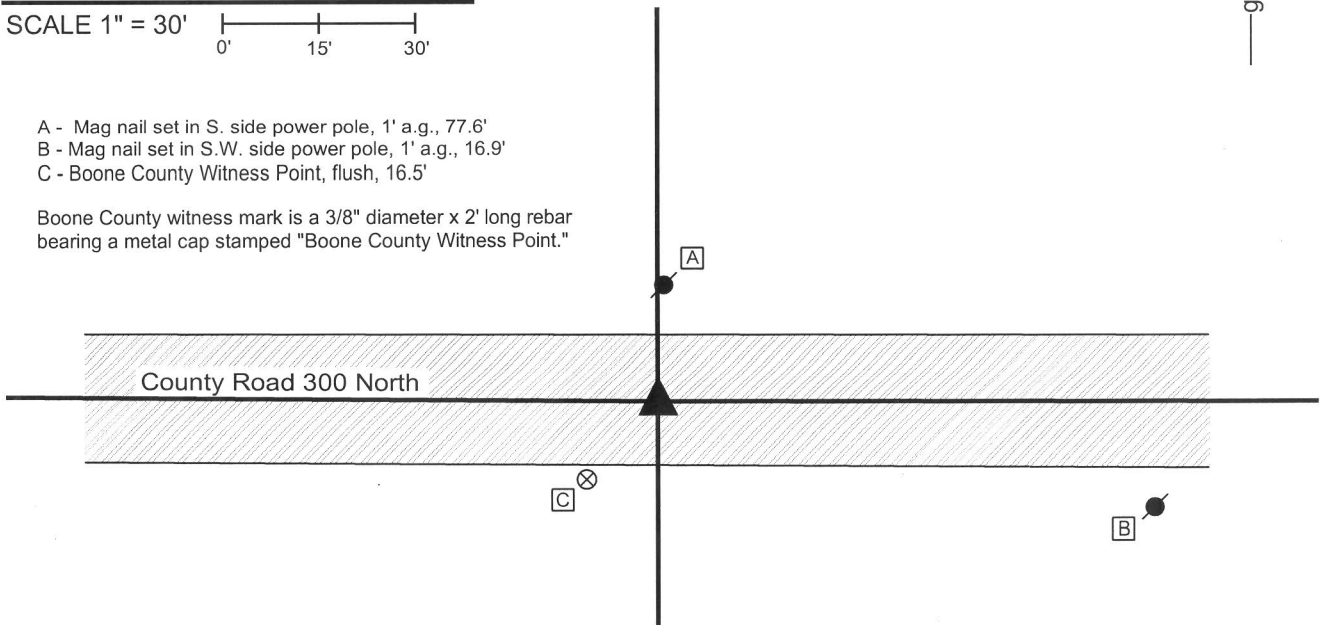
### CORNER WITNESS DETAIL

SCALE 1" = 30'

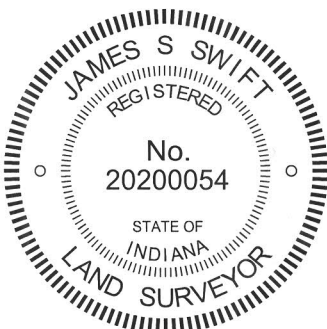


- A - Mag nail set in S. side power pole, 1' a.g., 77.6'
- B - Mag nail set in S.W. side power pole, 1' a.g., 16.9'
- C - Boone County Witness Point, flush, 16.5'

Boone County witness mark is a 3/8" diameter x 2' long rebar bearing a metal cap stamped "Boone County Witness Point."



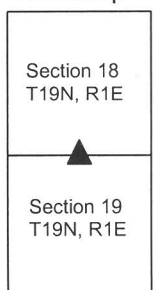
The harrison monument was set in place of a stone found. a BCS record of October 2, 3 & 5, 1857 states "Reestablished Set Rock 10 by 13." This record also shows a distance from the corner to the center of Elm Swamp Road to the east. A BCS tie card dated September 26, 2005 shows the corner as a harrison monument with no documentation of source. This corner was excavated November 14, 2013. Prior to excavation a harrison monument was found which fit with the distance ties shown on the 2005 tie card. This monument also fit well with the distance to the approximate center of Elm Swamp Road as shown on the 1857 record. Excavation revealed a stone found at 16 inches deep, west of the harrison. As found, the stone appeared to have been knocked over towards the east. The stone was removed from the road, and measured to be 13 inches by 10 inches by 7 inches. The stone was accepted as being the same monument described in the 1857 record. A harrison monument was set in place of the stone at the position of the main body of the stone, as found. The harrison monument found prior to excavation and removed during excavation was 2.0 feet east and 0.3 feet north of the stone. This corner was originally established as a wood post in 1822.



*Kenneth E. Hedge*  
Kenneth E. Hedge, County Surveyor

*James S. Swift*  
James S. Swift, IN LS 20200054  
February 5, 2015

Center Township



# SECTION CORNER RECORD

NE 300-100

## BOONE COUNTY SURVEYOR'S OFFICE

State Plane grid coordinates NAD83 (CORS96):

North: 1761482.20 East: 3129821.45 (U.S. survey feet)

Type of monument: Harrison, 4" disk 'Section Corner'

Depth: One inch below adjacent road surface

Indiana tie card references:

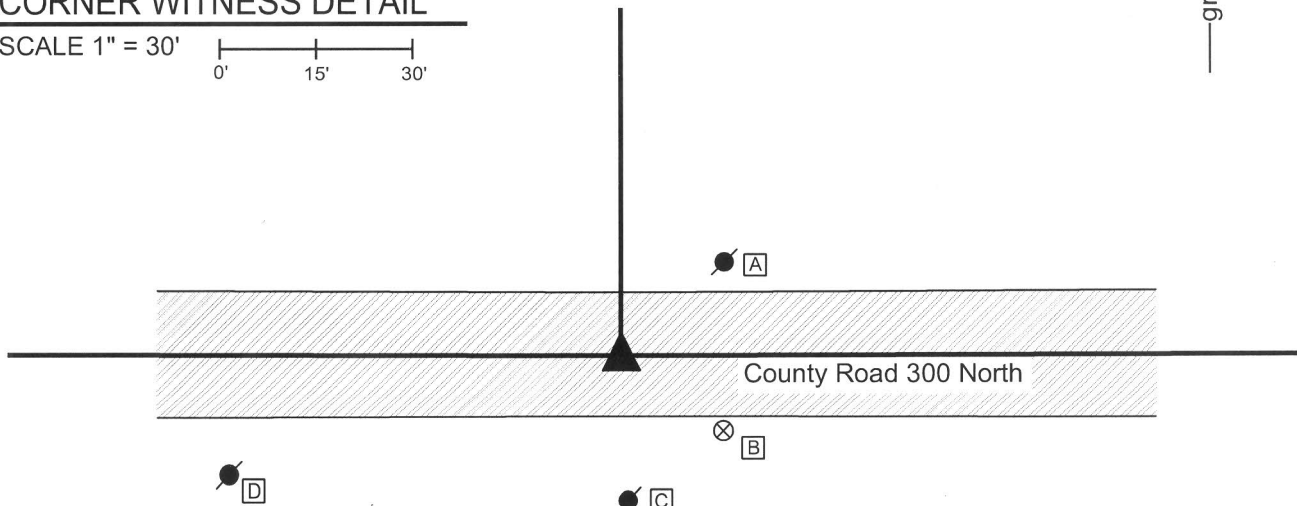
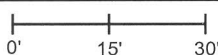
IN02\_T19NR1E18\_80 IN02\_T19NR1E17\_72

IN02\_T19NR1E19\_08 IN02\_T19NR1E20\_00



### CORNER WITNESS DETAIL

SCALE 1" = 30'



- A - Mag nail set in S. side power pole, 1' a.g., 21.3'
- B - Boone County witness mark, flush, 20.2'
- C - Mag nail set in N. side power pole, 1' a.g., 21.7'
- D - Mag nail set in N.E. side power pole, 1' a.g. 63.4'

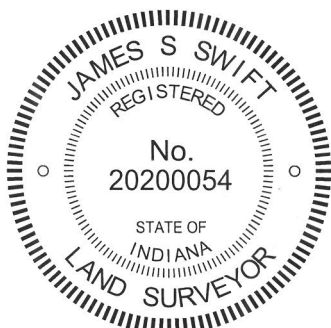
Boone County witness mark is a 3/8" diameter x 2' long rebar bearing a metal cap stamped "Boone County Witness Point."

The harrison monument was set in place of a vertical section of railroad rail found.

A BCS record of October 2, 3 & 5, 1857 states "Set Rock 9 by 11 in." A BCS tie card dated August 15, 1967 states "no stone." A BCS tie card dated July 28, 2005 shows the corner as a harrison monument with no documentation of source.

This corner was excavated on November 14, 2013. Prior to excavation, a harrison monument was found at 2 inches deep in a hole in the asphalt roadway. Excavation revealed a vertical section of railroad rail at 14 inches deep, 0.2 foot north and 0.05 foot west of the position of the harrison monument which had been removed during excavation. The top of the rail is at the depth of the bottom of the road bed. Excavation of an area extending 2.7 feet north, 4 feet east, 3 feet south and 2.5 feet west of the rail revealed no further evidence of the corner. It is most likely that the rail was set in association with the creation of the 1967 tie card, as it is known that it was a common practice for BCS survey crews working at that time to set rails at the purported location of the corner. The tie card shows the rail being in line with a corner post to the north. The rail was accepted as the best available evidence of the corner. A new harrison monument was set in the position of the rail.

This corner was originally established as a wood post in 1822.



*Kenneth E. Hedge*  
Kenneth E. Hedge, County Surveyor

*James S. Swift*  
James S. Swift, IN LS 20200054  
February 5, 2015

Center Township

Section 18 T19N, R1E	Section 17 T19N, R1E
Section 19 T19N, R1E	Section 20 T19N, R1E

PHOTOGRAPHIC DOCUMENTATION

Date of photography: November 14, 2013

View of the stone as found.



View of the stone, removed from the hole and stood vertical.



View from over the stone, looking west along C.R. 300 North.



For details and documentation, refer to related sheet "Section Corner Record."