

# SECTION CORNER RECORD

# SE 300-600

## BOONE COUNTY SURVEYOR'S OFFICE

State Plane grid coordinates NAD83 (NSRS 2007):  
North: 1730404.93 East: 3156558.88 (U.S. survey feet)

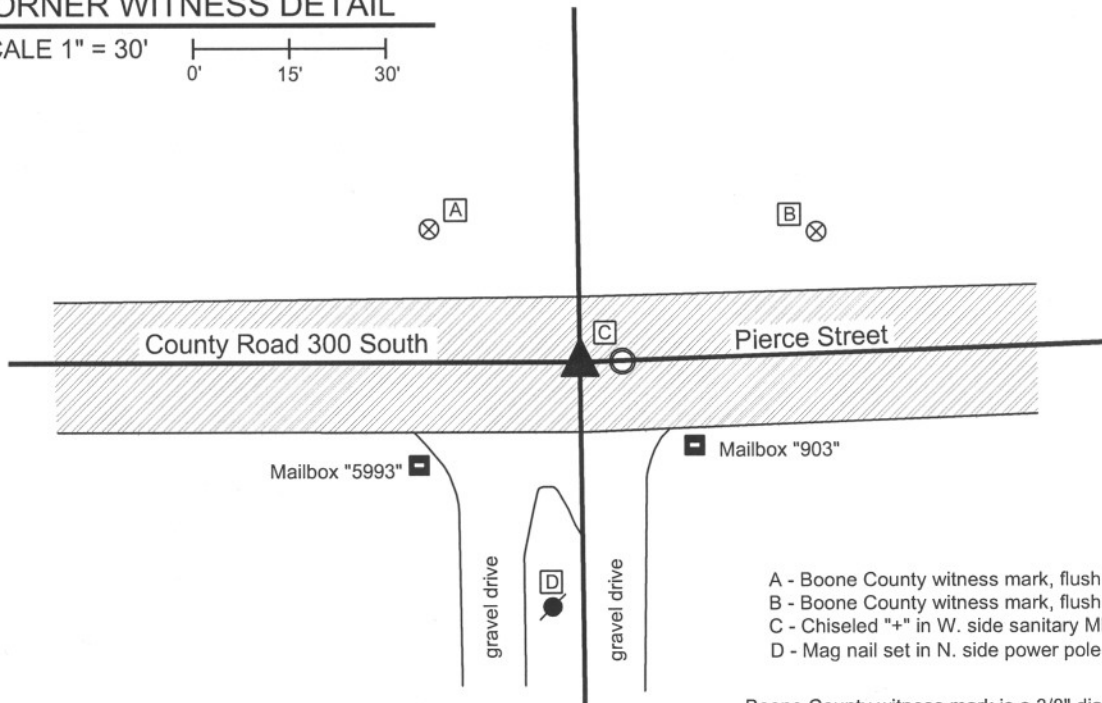
Type of monument: Harrison, 4" disk 'Section Corner'  
Depth: One inch below adjacent road surface

Indiana tie card references:  
IN02\_T18NR1E13\_80      IN02\_T18NR2E18\_72  
IN02\_T18NR1E24\_08      IN02\_T18NR2E19\_00



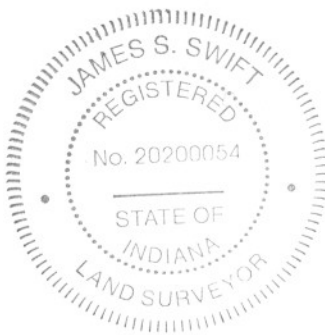
### CORNER WITNESS DETAIL

SCALE 1" = 30'  
0'      15'      30'



Boone County witness mark is a 3/8" diameter x 2' long rebar bearing a metal cap stamped "Boone County Witness Point."

The harrison monument was set in place of a harrison monument found. A BCS record of April 7-9, 1857 states "Reest. Set Rock 14 by 18 in." A BCS tie card dated February 26, 1969 states "no stone." A BCS tie card dated November 22, 2005 shows the corner as a harrison monument with no documentation about source. This corner was excavated on July 23, 2008. Prior to excavation, a harrison monument was visible at the surface. Excavation revealed clear evidence that the immediate vicinity of the corner was disturbed as part of the construction of a sanitary sewer and installation of the manhole 5 feet east of the harrison. No stone, nor any other monument was found. The old harrison was replaced with a new harrison in the same position. This corner was originally established as a wood post in 1819. There is no standard corner / closing corner offset as the federal notes for T 18 N, R 2 E state "intersect west line at post."



*Kenneth E. Hedge*  
Kenneth E. Hedge, County Surveyor

*James S. Swift*  
James S. Swift, IN LS 20200054

March 11, 2009

Worth Township

Section 13 T18N, R1E	Section 18 T18N, R2E
Section 24 T18N, R1E	Section 19 T18N, R2E

# SECTION CORNER RECORD

SE 300-650

## BOONE COUNTY SURVEYOR'S OFFICE

State Plane grid coordinates NAD83 (2011):

North: 1730503.47 East: 3159354.73 (U.S. survey feet)

Type of monument: Harrison, 4" disk 'Section Corner'

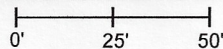
Depth: Flush with adjacent road surface

Indiana tie card references:

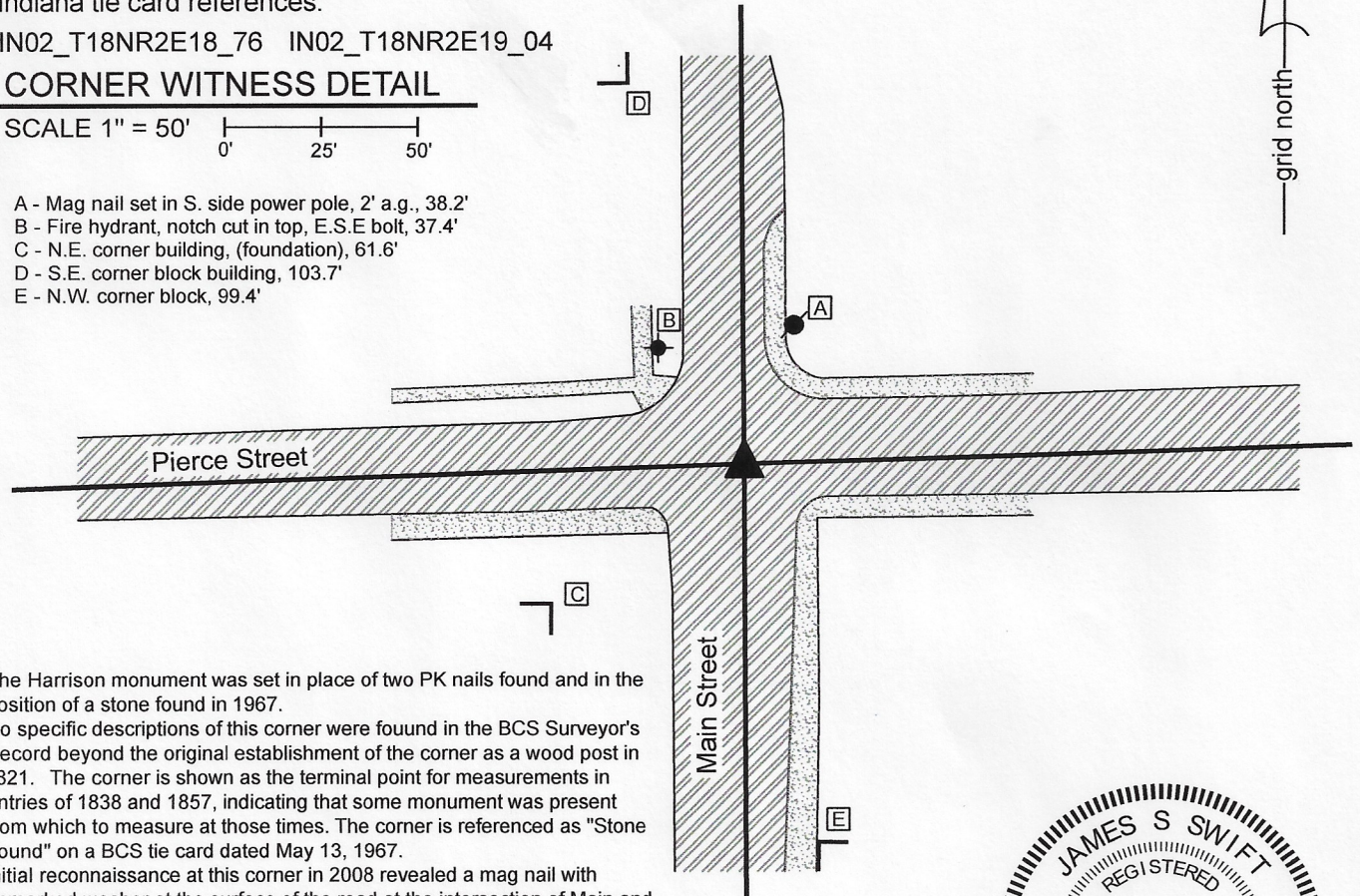
IN02\_T18NR2E18\_76 IN02\_T18NR2E19\_04

### CORNER WITNESS DETAIL

SCALE 1" = 50'



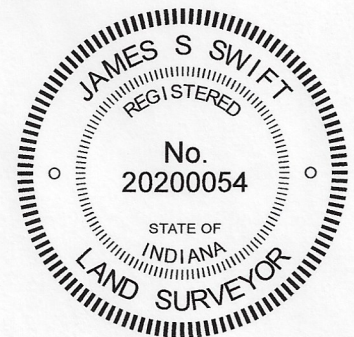
- A - Mag nail set in S. side power pole, 2' a.g., 38.2'
- B - Fire hydrant, notch cut in top, E.S.E bolt, 37.4'
- C - N.E. corner building, (foundation), 61.6'
- D - S.E. corner block building, 103.7'
- E - N.W. corner block, 99.4'



The Harrison monument was set in place of two PK nails found and in the position of a stone found in 1967.

No specific descriptions of this corner were found in the BCS Surveyor's Record beyond the original establishment of the corner as a wood post in 1821. The corner is shown as the terminal point for measurements in entries of 1838 and 1857, indicating that some monument was present from which to measure at those times. The corner is referenced as "Stone Found" on a BCS tie card dated May 13, 1967.

Initial reconnaissance at this corner in 2008 revealed a mag nail with unmarked washer at the surface of the road at the intersection of Main and Pierce Streets. Subsequent reconnaissance revealed that that particular monument was no longer present, but another mag nail was present almost seven feet west of the position of the nail found in 2008. This corner was studied carefully in the spring of 2020 at the request of several survey companies. Numerous small holes were visible in the pavement, indicating that survey field crews had been searching for a reliable monument at the corner. The position of the corner as documented in 1967 was reestablished using the one remaining distance tie from the 1967 survey and information shown on several surveys recorded in the Boone County Recorder's Office including surveys in Survey Book 15, page 63 and Survey Book 17, pages 60-61, respectively, both of which call for nails found marking the corner, the computed positions for which work with the 1967 distance tie. Excavation at this position revealed a P.K. Nail found at 5 inches below grade and another micro-P.K. Nail found at 8 inches below grade, slightly west of the upper nail. Both nails fit well with the computed position. Excavation to 16 inches and probing to 30 inches deep did not reveal the stone called in the 1967 record. It is believed that the stone was previously removed during excavation for a sewer project by the Town of Whitestown. The nail found at 5 inches deep fit precisely with the remaining distance tie from the 1967 tie card and was held as marking the position of the corner. Both nails were removed and a Harrison monument was set in the precise position of the nail found at 5 inches deep on April 8, 2020. The nail found in 2008, no longer present, had been 0.3 foot south and 1.2 feet east of the corner. The nail found in 2020, left in place, is 1.4 feet north and 5.5 feet west of the corner.



*Kenneth E. Hedge*  
 Kenneth E. Hedge, County Surveyor

*James S. Swift*  
 James S. Swift, IN LS 20200054

July 15, 2020

Worth Township

Section 18  
T18N, R2E

Section 19  
T18N, R2E

# SECTION CORNER RECORD

SE 300-700

## BOONE COUNTY SURVEYOR'S OFFICE

State Plane grid coordinates NAD83 (NSRS 2007):

North: 1730580.62 East: 3161992.08 (U.S. survey feet)

Type of monument: Harrison, 4" disk 'Section Corner'

Depth: One inch below adjacent road surface

Indiana tie card references:

IN02\_T18NR2E17\_72 IN02\_T18NR2E18\_80

IN02\_T18NR2E19\_08 IN02\_T18NR2E20\_00

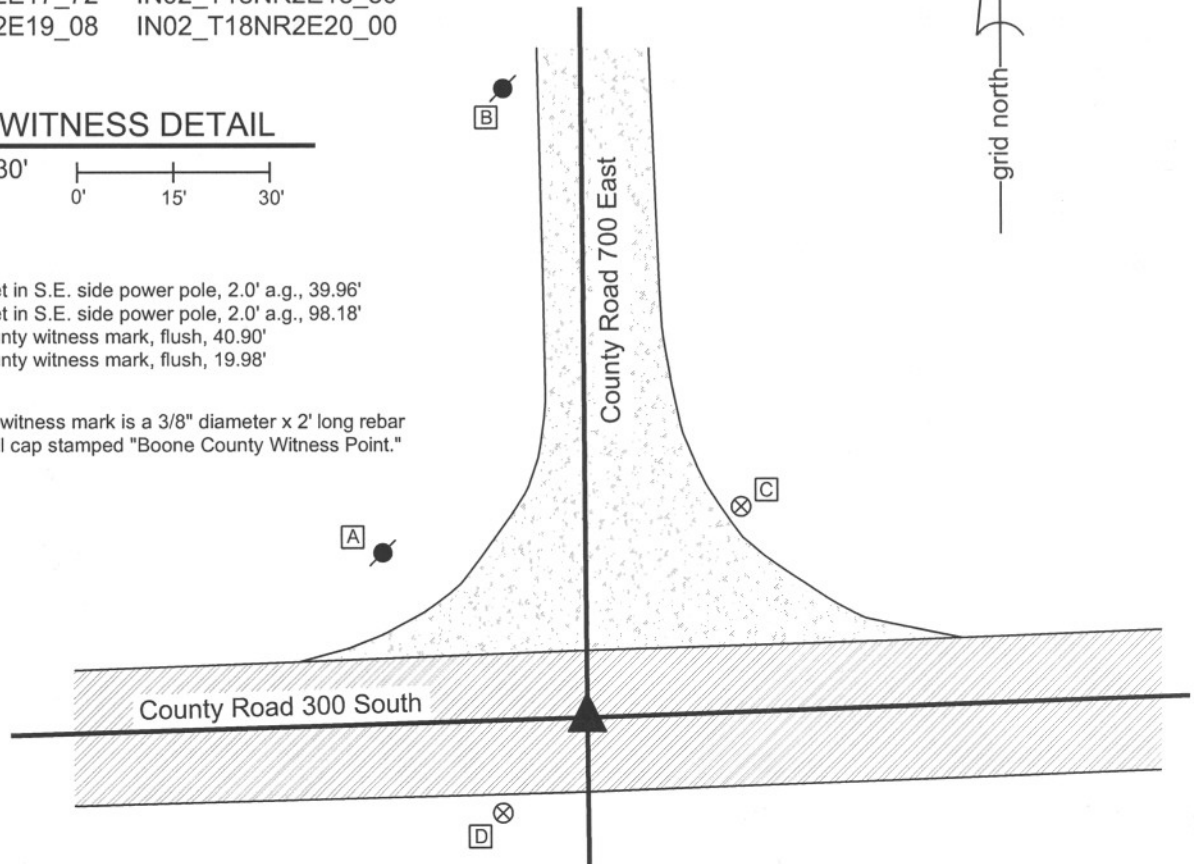
### CORNER WITNESS DETAIL

SCALE 1" = 30'



- A - Mag nail set in S.E. side power pole, 2.0' a.g., 39.96'
- B - Mag nail set in S.E. side power pole, 2.0' a.g., 98.18'
- C - Boone County witness mark, flush, 40.90'
- D - Boone County witness mark, flush, 19.98'

Boone County witness mark is a 3/8" diameter x 2' long rebar bearing a metal cap stamped "Boone County Witness Point."



The harrison monument was set in place of a railroad rail found.

A BCS record of August 17, 1869 calls for "a stone that was set." A BCS tie card dated May 3, 1967 states "stone found." This corner was excavated on July 15, 2008. Prior to excavation, a railroad spike was visible 2 inches deep in a hole in the asphalt. Excavation revealed a railroad rail 10 inches deep, 0.15 foot W and 0.05 foot S of the railroad spike. Both were removed. Further excavation yielded a small stone found at 24 inches deep. The stone measured 10 inches E-W by 6 inches N-S by 5 inches thick. The top, center of the stone was 0.3 foot south of the rail. It is not clear whether this stone is the the stone of record, nor is it clear whether this was the stone found in 1967. If is the stone of 1967, it is not known whether it was left undisturbed at the time of the setting of the rail. It is known that the common practice by field crews from this office during that time was to remove the stone entirely and set a rail in its place, when a stone was found. The most likely occurrence was exactly that: the stone was removed and replaced with the rail and that the small stone is not the true corner stone. No other monuments were found. The rail was accepted as providing the best evidence of the original location of the corner stone and the harrison monument was set in the position of the rail.

This corner was originally established as a wood post in July, 1821.



*Kenneth E. Hedge*  
 Kenneth E. Hedge, County Surveyor

*James S. Swift*  
 James S. Swift, IN LS 20200054

March 11, 2009

Worth Township

Section 18 T18N, R2E	Section 17 T18N, R2E
Section 19 T18N, R2E	Section 20 T18N, R2E

# SECTION CORNER RECORD

SE 350-600

## BOONE COUNTY SURVEYOR'S OFFICE

State Plane grid coordinates NAD83 (NSRS 2007):  
North: 1727769.54 East: 3156587.73 (U.S. survey feet)

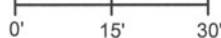
Type of monument: Harrison, 4" disk 'Section Corner'  
Depth: 2 inches above adjacent ground

Indiana tie card references:  
IN02\_T18NR1E24\_44  
IN02\_T18NR2E19\_36



### CORNER WITNESS DETAIL

SCALE 1" = 30'

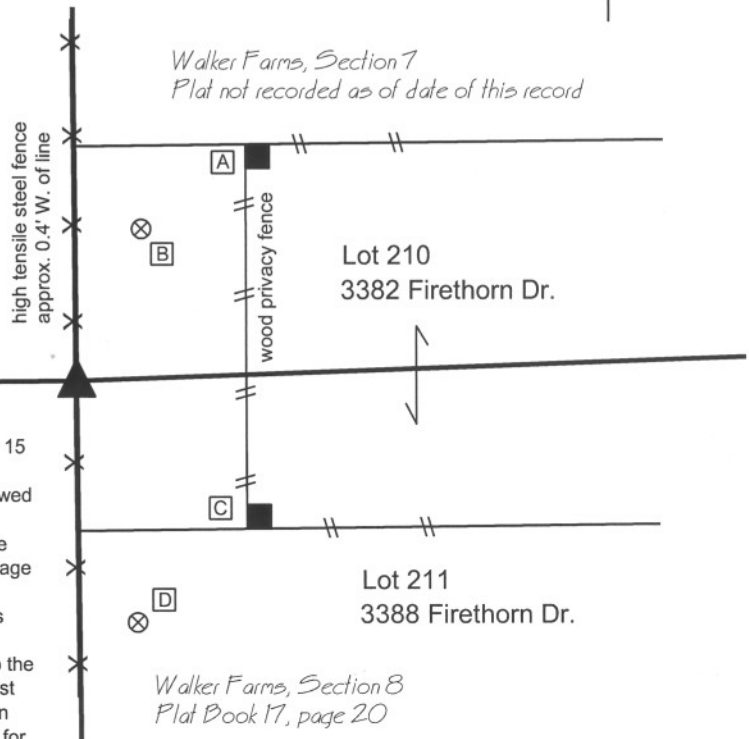


- A - Wood corner post, N.W. corner, base, 45.50'
- B - Boone County witness mark, flush, 25.74'
- C - Wood corner post, S.W. corner, base, 35.44'
- D - Boone County witness mark, flush, 38.98'

Boone County witness mark is a 3/8" diameter x 2' long rebar bearing a metal cap stamped "Boone County Witness Point."

The harrison monument was set in place of a stone found. A BCS record of April 9, 1857 states "Re Established. Set a Rock 9 by 15 in." No recent BCS tie cards were found referencing this corner. Preliminary excavation for this corner occurred on March 27, 2009, followed by final excavation and monumentation of May 11, 2009. Prior to excavation no monuments were visible in the vicinity of this corner. The corner is shown on the plat of Walker Farms Section 8, Plat Book 17, page 20 in the Office of the Boone County Recorder but the plat does not demonstrate a monument. The preliminary survey upon which this plat is based, Survey Book 4, page 67 demonstrates that the corner was established at the midpoint of the line connecting the section corners to the north and south. However, this survey holds a position for the southwest corner of section 19 which is approximately one rod north of the position held by this office, as discussed in detail on the Section Corner Record for corner SE-400-600. Hence, the calculated midpoint is approximately 1/2 rod north of the midpoint as held by this office. Given the lack of physical evidence for the corner, the midpoint of the line connecting the section corners (as held by this office) was computed and this position was "turned out" in the field. The record stone was found at nearly the exact position turned out in the field. The stone was approximately 2 inches below grade and measured approximately 9 inches N-S and E-W by 15 inches tall. The north side of the stone is vertical and the south side slopes to the south, giving the stone an overall vertical orientation, though more specifically on the north side than the south side. The stone was accepted as marking the corner and its presence at the midpoint of the line connecting the section corners is accepted as providing collateral evidence to the position of the section corner to the south, as discussed in the record for that corner. The stone was removed and the harrison monument was set at the position of the top, high point of the stone. Although this corner is on the range line, there was no recorded off-set for the corners to the north and south, hence no off-set should exist for this corner.

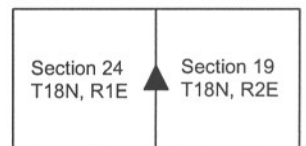
This corner was originally established as a wood post in 1819.



*Kenneth E. Hedge*  
Kenneth E. Hedge, County Surveyor

*James S. Swift*  
James S. Swift, IN LS 20200054  
July 14, 2010

Worth Township



PHOTOGRAPHIC DOCUMENTATION

Date of photography: May 11, 2009

View of the stone as first exposed.



View of the stone more fully exposed.  
View from above and east.



View from above the stone looking south along  
the section line and line between Walker Farms  
and the adjoining farm to the west.



View of the stone more fully exposed.  
View from above and north.



For details and documentation, refer to  
related sheet "Section Corner Record."

# SECTION CORNER RECORD

SE 350-650

## BOONE COUNTY SURVEYOR'S OFFICE

State Plane grid coordinates NAD83 (2011):

North: 1727867.48 East: 3159374.22 (U.S. survey feet)

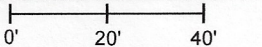
Type of monument: Harrison, 4" disk 'Section Corner'

Depth: Flush with adjacent road surface

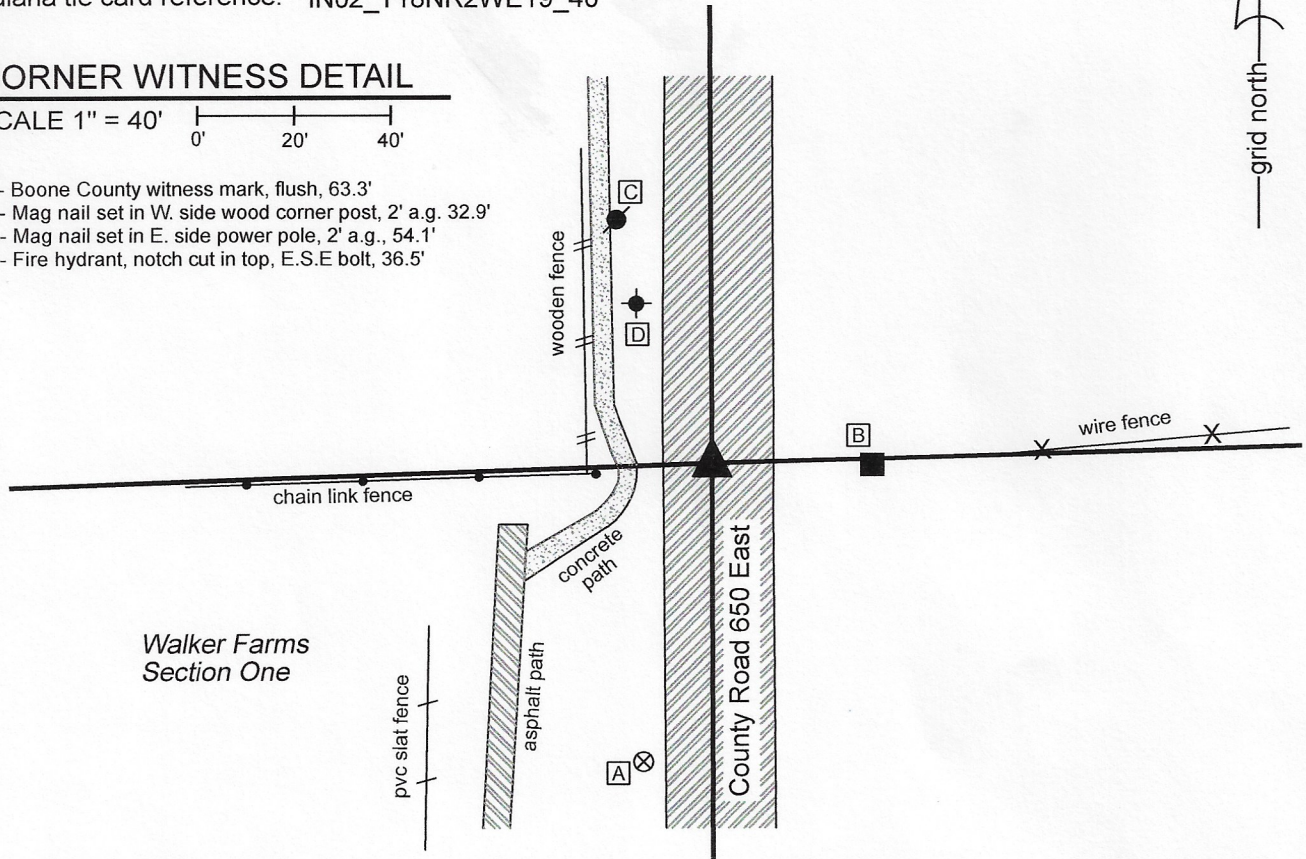
Indiana tie card reference: IN02\_T18NR2WE19\_40

### CORNER WITNESS DETAIL

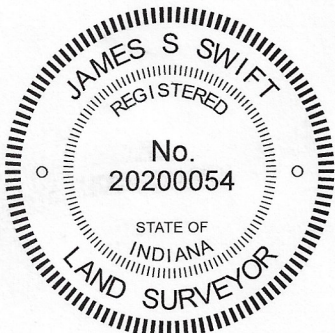
SCALE 1" = 40'



- A - Boone County witness mark, flush, 63.3'
- B - Mag nail set in W. side wood corner post, 2' a.g., 32.9'
- C - Mag nail set in E. side power pole, 2' a.g., 54.1'
- D - Fire hydrant, notch cut in top, E.S.E bolt, 36.5'



The Harrison monument was set at the computed position of a P.K. nail formerly held as marking the corner. This corner is not an original corner of the PLSS. The corner is shown as being set by the Boone County Surveyor in an entry of the Surveyor's Record of January 9, 1838. No subsequent references were found in the Surveyor's Record. No BCS tie cards were found referencing the corner. Numerous surveys recorded in the Boone County Recorder's Office were found referencing this corner as a P.K. nail found, including a survey recorded in Survey Book 4, page 67 which is the preliminary survey for the subsequent platting of the Walker Farms additions. A nail is known to have been present in 2008 but evidently has been removed since. The position of the corner was reconstructed with respect to numerous surveys including the aforementioned SB 4, p.67. Uncertainties of up to 0.5 foot in all directions may be attributed to the position of the corner as computed with respect to the various surveys. The specific position of the corner was computed with respect to centerline control monumentation found in White Cliff Way and Laurel Drive, as shown on the plat of Walker Farms Section 1, Plat Book 13, page 25, with positional uncertainty of 0.2 foot in all directions. The computed position fits well with local evidence in the form of the center of the north-south county road and being opposite an ancient wood end post on the east side of the road. Within the uncertainties noted above, this position appears to have been held as marking the corner repeatedly and consistently for many years. Minor excavation at the computed position on April 8, 2020 did not reveal further evidence of the corner. No nail was found. A Harrison monument was set at the position computed with respect to the centerline controls monuments in White Cliff Way and Laurel Drive.

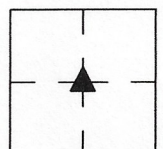


*Kenneth E. Hedge*  
Kenneth E. Hedge, County Surveyor

*James S. Swift*  
James S. Swift, IN LS 20200054  
July 15, 2020

Worth Township

Section 19  
T18N, R2E



# SECTION CORNER RECORD

SE 350-700

## BOONE COUNTY SURVEYOR'S OFFICE

State Plane grid coordinates NAD83 (2011):

North: 1727938.84 East: 3162016.21 (U.S. survey feet)

Type of monument: Harrison, 4" disk 'Section Corner'

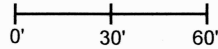
Depth: Four inches above adjacent ground

Indiana tie card references:

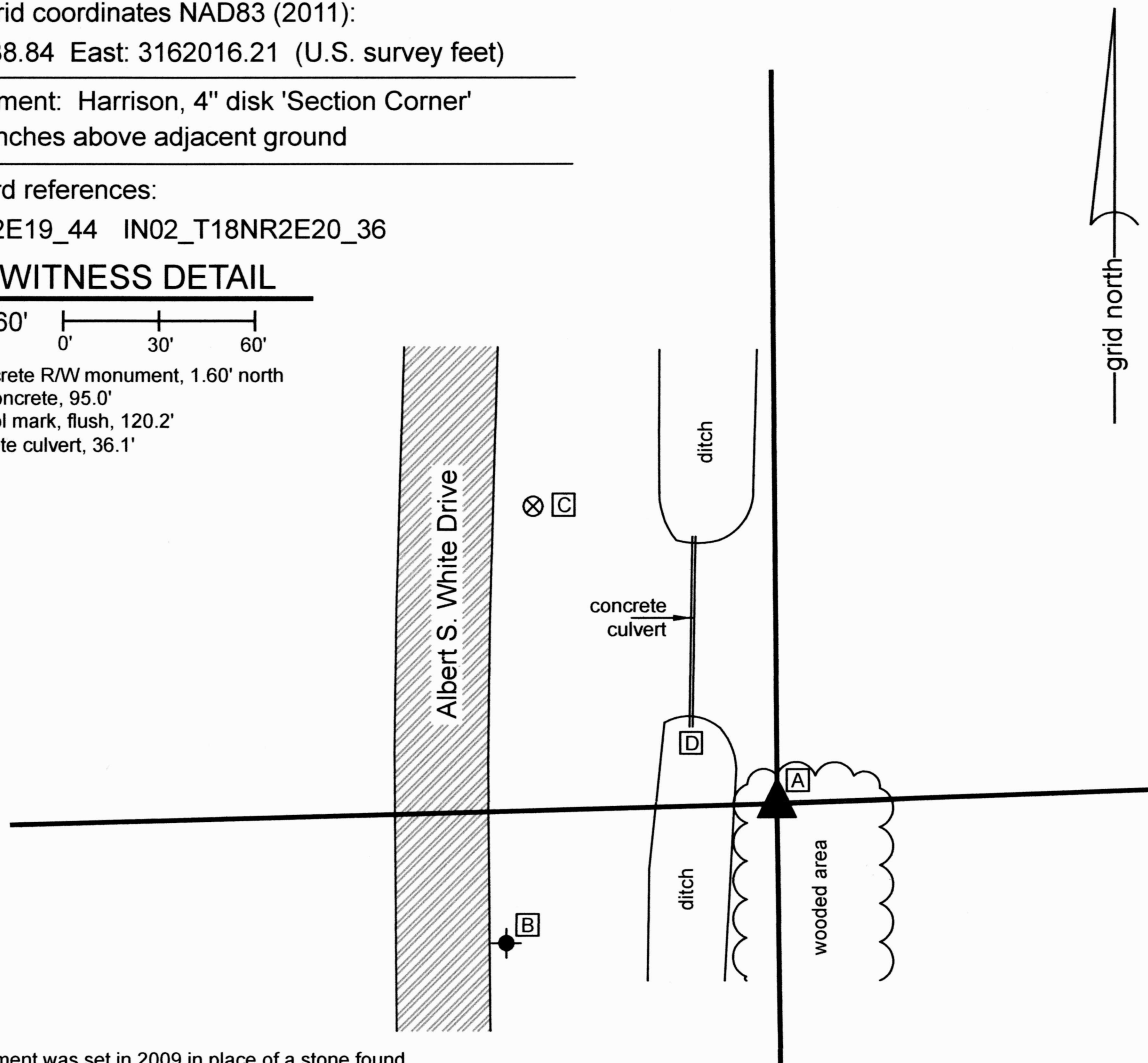
IN02\_T18NR2E19\_44 IN02\_T18NR2E20\_36

### CORNER WITNESS DETAIL

SCALE 1" = 60'



- A - S. edge, concrete R/W monument, 1.60' north
- B - Iron plug in concrete, 95.0'
- C - Survey control mark, flush, 120.2'
- D - Top of concrete culvert, 36.1'



The Harrison monument was set in 2009 in place of a stone found.

The most recent Section Corner Record sheet for this corner, dated July 25, 2011, states the following with respect to the 2009 excavation:

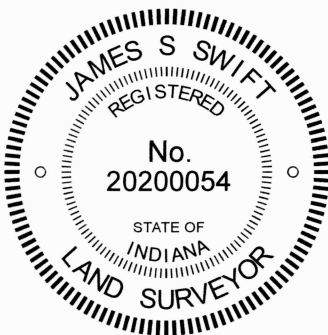
A BCS record of December 15, 1871 states "Reestablished Set Rock 14.9.6 +." No recent BCS tie cards were found for this corner.

This corner was excavated on December 19, 2009. Prior to excavation an iron pipe was visible protruding to 6 inches above grade. The iron pipe was at the northwest edge of a hackberry tree which falls at the intersection of fences to the west and south. The fences are old and generally on the ground.

Parts of the old corner post were visible lying on the ground near the tree. Excavation revealed the record stone at the north edge of the tree, approximately 10 inches north and 3 inches east of the iron pipe. The top of the stone was at 3 inches below grade. An etched "+" was clearly visible on the top of the stone and the dimensions of the stone matched the 1871 record. The stone, pipe and the hackberry tree were all removed and a Harrison monument was set in place of the stone.

In 2009, this corner was at the corner of agricultural fields. Since then, a road has been built to the west. The current sheet shows the situation as it exists in 2024, with new ties for the corner. The position of the corner shown hereon is slightly different than shown on the previous sheet, due, in part, to a new GPS adjustment since 2009 and also due to the possibility that the monument may have been shifted slightly during construction associated with the roadway and installation of the adjacent right-of-way monument.

This corner was originally established as a wood post in 1820.

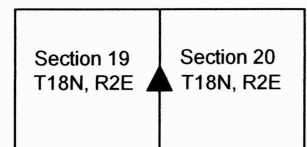


*Carol Cunningham*  
Carol Cunningham, County Surveyor

*James S. Swift*  
James S. Swift, IN LS 20200054

March 29, 2024

Worth Township



# SECTION CORNER RECORD

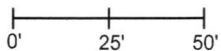
SE 400-600

## BOONE COUNTY SURVEYOR'S OFFICE

State Plane grid coordinates NAD83 (2011):  
 North: 1725133.92 East: 3156616.92 (U.S. survey feet)

Type of monument: Iron plug in concrete, flush

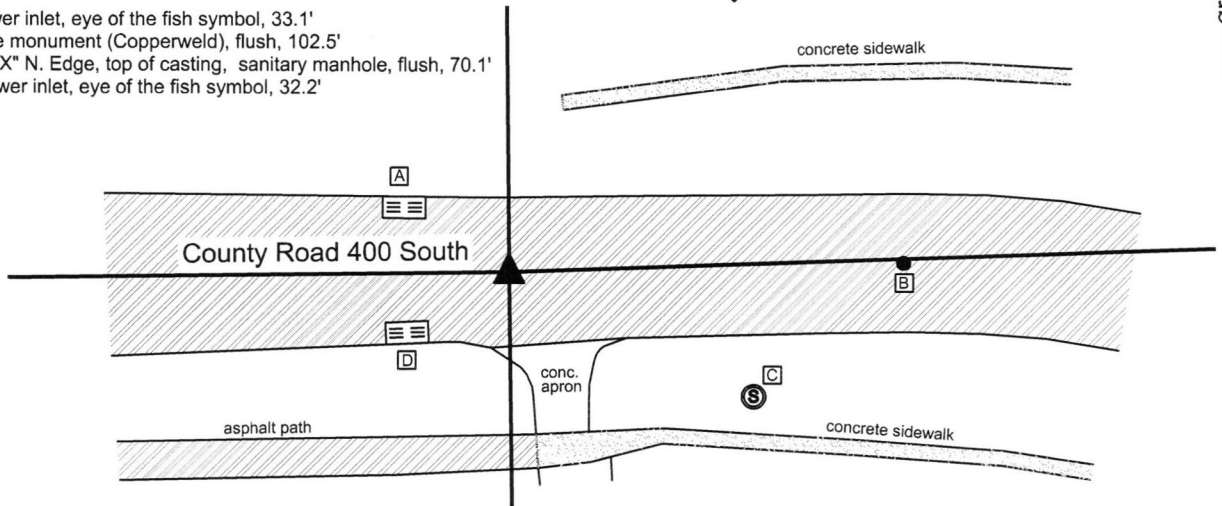
### CORNER WITNESS DETAIL

SCALE 1" = 50' 

Indiana tie card references:  
 IN02\_T18NR1E24\_80 IN02\_T18NR1E25\_08  
 IN02\_T18NR2E19\_72 IN02\_T18NR2E30\_00

- A - Storm sewer inlet, eye of the fish symbol, 33.1'
- B - Center line monument (Copperweld), flush, 102.5'
- C - Chiseled "X" N. Edge, top of casting, sanitary manhole, flush, 70.1'
- D - Storm sewer inlet, eye of the fish symbol, 32.2'

*Walker Farms Subdivision*

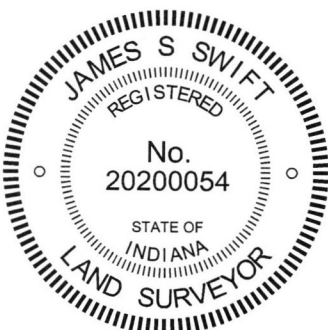


This corner was previously documented by this office on July 14, 2010. Since that date, the Harrison monument at the corner was removed during road construction and replaced with an iron pin in concrete.

The 2010 documentation is as follows:

The Harrison monument was set in place of a Harrison monument found.

A BCS record of July 8, 1881 states "Established by running line from E to F in Sect 19....Set Rock 10,8,6 marked +." A BCS tie card dated May 11, 1970 states "No stone, Set Rail." This tie card references the corner as being the northeast corner of section 25, township 18 north, range 1 east. The card shows this corner as being situated in the center of County Road 400 South and also shows an apparent corner one rod (16.5 feet) north and states "Stone for NW corner of Sec 30 T18N R2E?" The question mark shown in the quote is per the tie card. The field crew evidently found a rock one rod north of the center of the road and concluded that the standard corner fell in the road and the closing corner fell to the north, monumented by the rock. However, the original federal surveyors did not establish two corners at this point. The transcribed government field notes for the closing corner state "West Between Secs 19 & 30 ..... 82.88 Intersected West line at post...." Hence, the reference in the 1970 tie card to the closing corner being one rod north of the standard corner is erroneous, as was perhaps known at the time, as evidenced by the question mark. Analysis of the geometry of the proximate lines and corners of the Public Land Survey System in this area yields ample evidence that this corner should fall within County Road 400 South rather than north of it. This corner was excavated on July 29, 2009. Prior to excavation a Harrison monument was found in the approximate center of County Road 400 South at a position which fits that shown for the railroad rail on the 1970 tie card with respect to the center of the road, the fence to the north and the fence to the south 49.5 feet east. No documentation was found for the source of the Harrison. Excavation revealed no further evidence below or in the vicinity of the Harrison. The area of excavation was 12 feet N-S by 12 feet E-W, centered on the Harrison. Based on the references shown on the 1970 tie card, the rail would have definitely fallen within this area of excavation. The road bed in this area is very shallow, being only 6 to 9 inches of gravel, below which is the clay layer. If the record stone had been set in a similar manner to many other stones found from the same era, it would have been embedded in the clay, protruding 2 to 4 inches into the bottom of the road, putting it well within the range of the blade or teeth of a road grader. The fact that the rail is not present indicates that it was probably hit by a road grader and removed. As the Harrison monument was the only physical evidence found and it fits the references on the 1970 tie card, it was held as marking the corner. A new Harrison monument was set in its place approximately 8 inches below grade. The stone shown on the 1970 tie card was not found and was likely removed during the installation of an electric transformer box servicing the Walker Farms development to the north and east. It is noted that the preliminary survey to the Walker Farms development, Survey Book 4, page 67, holds the stone for the S.W. corner of section 19, stating "stone found per Co. Surveyor's ties." As noted above, this stone is not considered the corner. The reference to the tie card does not note the question mark attached to this reference. It is noted that this survey does hold County Road 400 South, extended east to the intersection with County Road 650 East, as the south quarter corner. It is also noted that the stone at the west quarter corner of section 19 was found at the midpoint of the line between the northwest corner, in County Road 300 South and southwest corner, in County Road 400 South. Please refer to the record for corner SE-350-600 for discussion of this stone.



  
 Kenneth E. Hedge, County Surveyor

  
 James S. Swift, IN LS 20200054

July 14, 2010 - revised March 23, 2016

Worth Township

Section 24 T18N, R1E	Section 19 T18N, R2E
Section 25 T18N, R1E	Section 30 T18N, R2E



# SECTION CORNER RECORD

# SE 400-650

## BOONE COUNTY SURVEYOR'S OFFICE

State Plane grid coordinates NAD83 (2011):

North: 1725228.17 East: 3159388.99 (U.S. survey feet)

Type of monument: Harrison, 4" disk 'Section Corner'

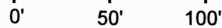
Depth: Flush with surrounding ground

Indiana tie card references:

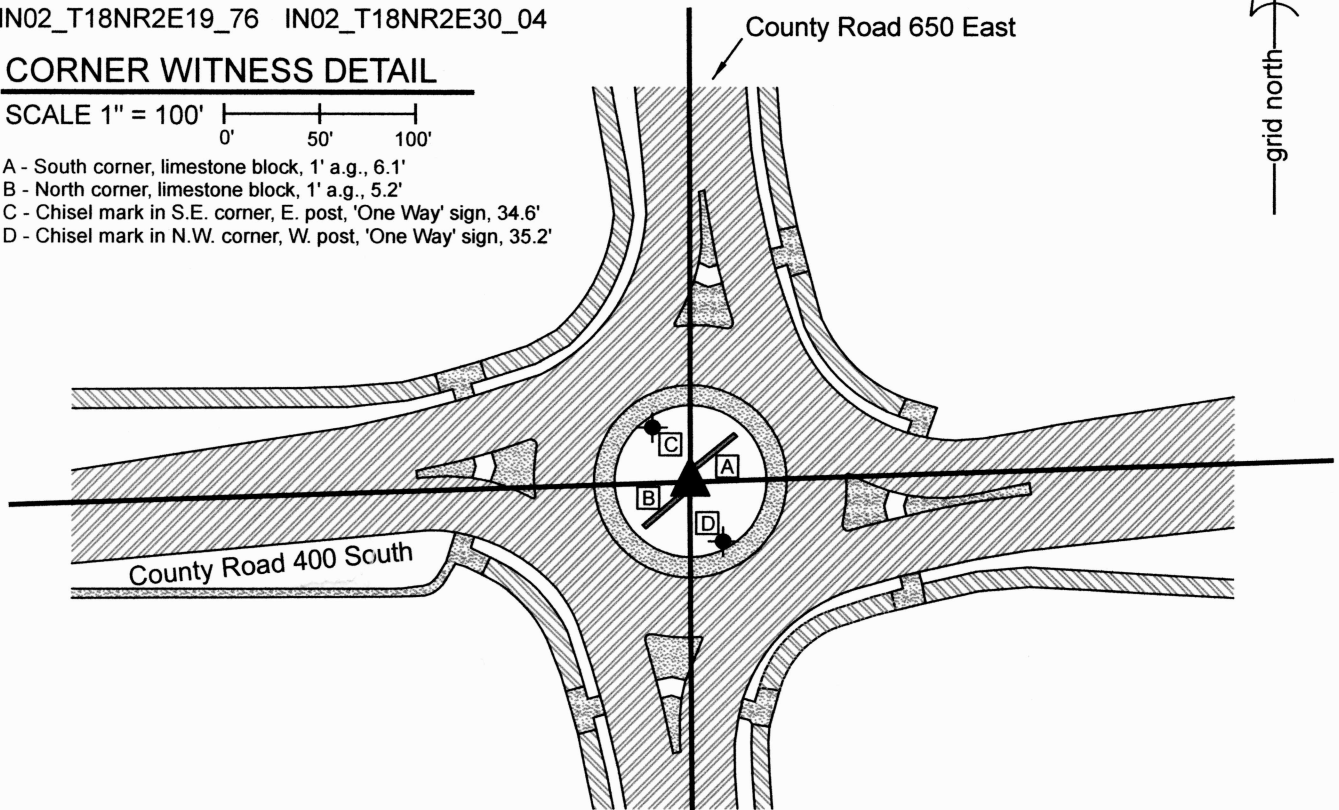
IN02\_T18NR2E19\_76 IN02\_T18NR2E30\_04

### CORNER WITNESS DETAIL

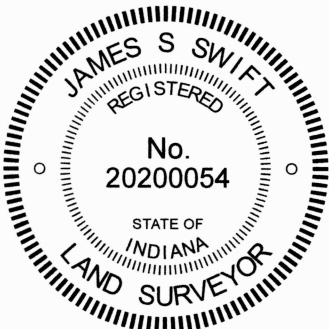
SCALE 1" = 100'



- A - South corner, limestone block, 1' a.g., 6.1'
- B - North corner, limestone block, 1' a.g., 5.2'
- C - Chisel mark in S.E. corner, E. post, 'One Way' sign, 34.6'
- D - Chisel mark in N.W. corner, W. post, 'One Way' sign, 35.2'



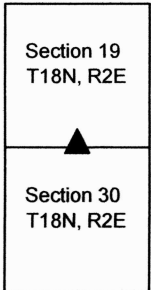
The Harrison monument was set in place of a similar monument which existed prior to the construction of the roundabout at this intersection, as most recently documented March 30, 2012. The 2012 documentation states the following with respect to this corner:  
 The Harrison monument was set in place of a PK nail found. A BCS record of March 15, 1868 states "Reestablished from the intersection of the four lines. Set R, from which....." No recent BCS tie cards were found referencing this corner.  
 This corner was excavated on August 14, 2009. Prior to excavation, a mag nail was found in the approximate center of County Road 650 East, at what is believed to have been the intersection with the old roadway of County Road 400 South to the west, prior to reconstruction associated with the Walker Farms Development. Excavation revealed a PK nail found at 6 inches below grade, 0.1' south and 0.3' east of the mag nail. Further excavation revealed various additional pieces of evidence, none of which could be accepted as determining the position of the corner. Several medium sized rocks were found 2 feet, more or less, north of the nails. None of these rocks bore the typical characteristics of stones found marking other corners. Various pieces of wood were found, including a discernable pattern of horizontal pieces of wood, oriented perpendicular to the north-south roadway. These pieces of wood were found at depths of 28 to 32 inches and were generally embedded in the clay layer below the road bed. The pieces of wood appeared to represent an old "corduroy" road and were accepted as evidence that the old wagon road tended to be wet and muddy in this area. The existence of the wood pieces and evidence of the corduroy road may explain why the record corner stone was not found, as the stone may have been removed or displaced by activities associated with stabilizing the road bed. An area of excavation being 32 inches E-W at the north end, 58 inches E-W at the south end and 4.5 feet north south, centered N-S on the found nails, with the west line at 2 feet west of the nails and the east line at a northwesterly angle, was excavated to the clay layer below the road and the horizontal pieces of wood. Excavation was not extended further east due to the presence of a fiber optic line, as marked by IUPPS. The found PK nail was accepted as the best available evidence of the corner. The PK nail fits with surrounding corners and is shown as the corner on the plats and preliminary surveys for the Walker Farms development. The PK nail was replaced with a Harrison monument at the same position.



*Carol Cunningham*  
 Carol Cunningham, County Surveyor

*James S. Swift*  
 James S. Swift, IN LS 20200054  
 September 30, 2024

Worth Township



# SECTION CORNER RECORD

## BOONE COUNTY SURVEYOR'S OFFICE

SE 400-700

State Plane grid coordinates NAD83 (2011):  
 North: 1725318.22 East: 3162053.90 (U.S. survey feet)

Type of monument: Harrison, 4" disk 'Section Corner'  
 Depth: Flush with adjacent ground

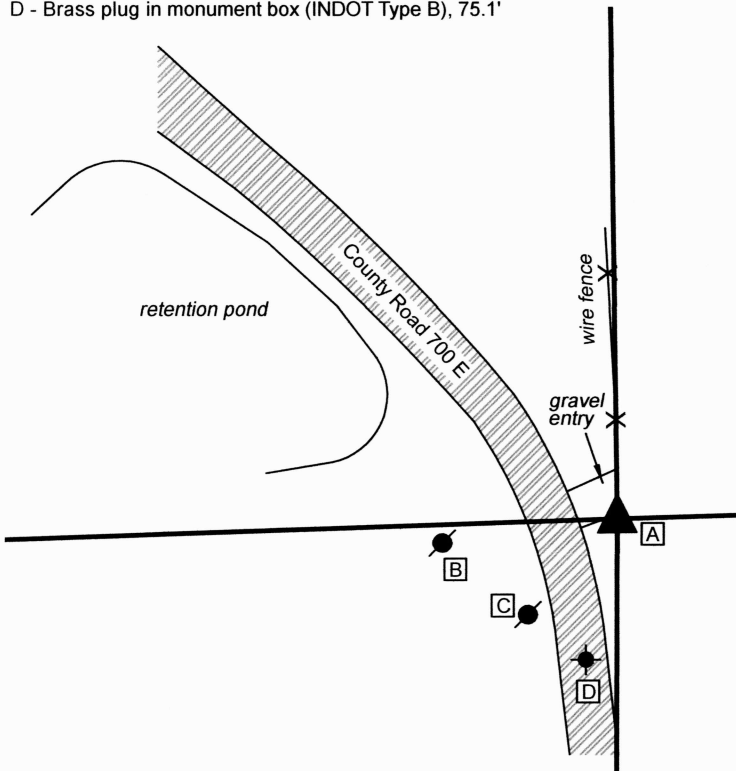
Indiana tie card references:  
 IN02\_T18NR2E19\_80 IN02\_T18NR2E20\_72  
 IN02\_T18NR2E30\_08 IN02\_T18NR2E29\_00



### CORNER WITNESS DETAIL

SCALE 1" = 100'

- A - W. edge right-of-way monument, 1.05'
- B - Mag nail set in S.E. side power pole, 2' a.g., 91.8'
- C - Mag nail set in E. side power pole, 2' a.g., 68.1'
- D - Brass plug in monument box (INDOT Type B), 75.1'

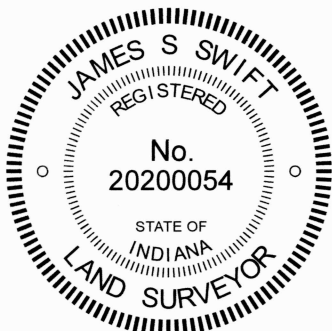


The Harrison monument was set in place of a rebar found in 2009. Since that time, the orientation of the adjacent road has been altered and the depiction shown hereon represents the current situation at the corner, with new reference ties. The monument has not been changed or moved.

A summary of the explanation included on the July 14, 2010 record sheet is as follows:  
 A BCS record of 1866 states "ReEstablished Set a Rock 28.20.20 marked + on top."  
 No recent BCS tie cards were found for this corner. This corner was excavated on September 10, 2009. Prior to excavation, two monuments were visible: a Harrison monument and a 5/8 inch rebar bearing a plastic cap stamped "Section Corner." The two monuments were adjacent, with the Harrison immediately east of the rebar. No documentation was found for these monuments. Excavation revealed another rebar found at 18 inches deep which was against a smooth iron pin at the same depth. The smooth iron pin appears to be an old grounding rod for a telephone pole. It was anchored so firmly and deeply that an excavator was not able to pull it. The top several feet of the rod were broken off and the remainder was left in place. The record stone was not found, though the area was excavated extensively. The various found monuments were all located within one horizontal foot of each other.

The 2010 record sheet documenting the excavation from 2009 discusses, in detail, the geometry of the area and potential uncertainties associated with the position of the corner. Since that time, the Harrison monument set in 2009 has been held for extensive development to the west. The 2010 record sheet concludes by noting that the the lower rebar, found adjacent to the smooth iron pin, was held as the specific location for the corner. The previously existing Harrison monument had been 0.3 of a foot south of this and the capped rebar was the same amount south and also 0.4 of a foot west.

This corner was originally established as a wood post in July, 1821.



*Carol Cunningham*  
 Carol Cunningham, County Surveyor

*James S. Swift*  
 James S. Swift, IN LS 20200054  
 March 29, 2024

Worth Township

Section 19 T18N, R2E	Section 20 T18N, R2E
Section 30 T18N, R2E	Section 29 T18N, R2E