

# SECTION CORNER RECORD

# SW 200-1100

## BOONE COUNTY SURVEYOR'S OFFICE

State Plane grid coordinates NAD83 (2011):

North: 1734691.23 East: 3066709.26 (U.S. survey feet)

Type of monument: Harrison, 4" disk 'Section Corner'

Depth: One inch below adjacent road surface

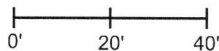
Indiana tie card references:

IN02\_T18NR2W07\_80 IN02\_T18NR2W08\_72

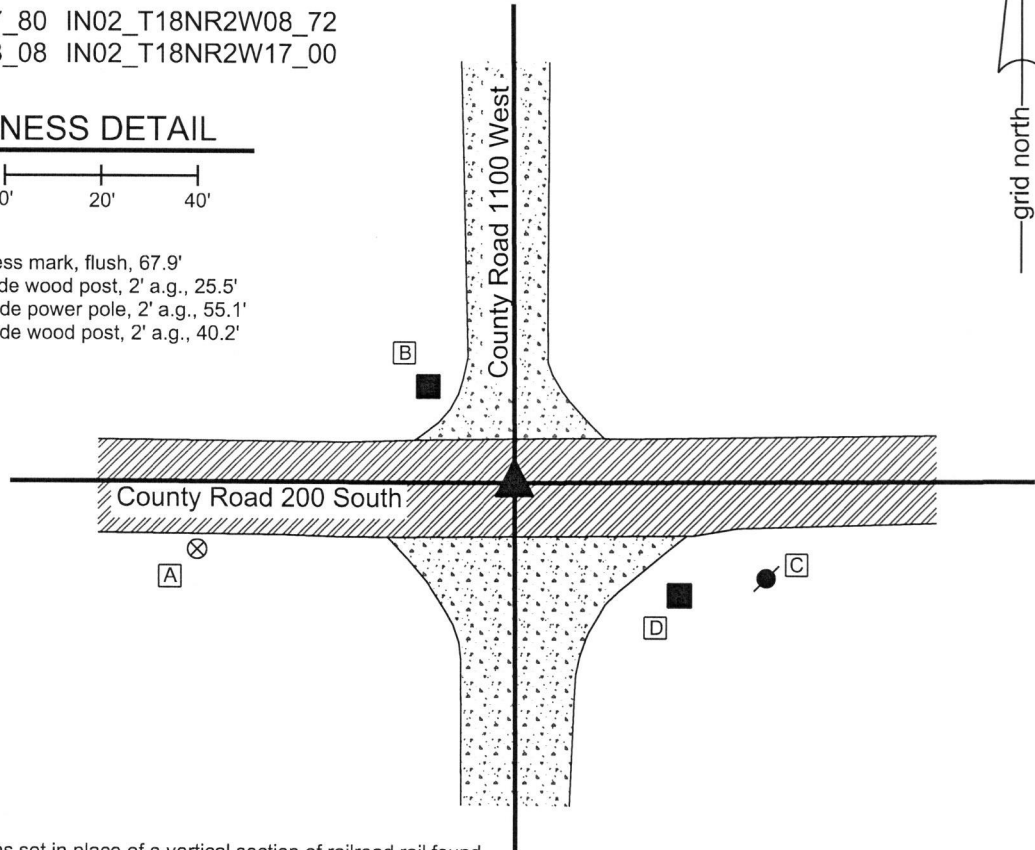
IN02\_T18NR2W18\_08 IN02\_T18NR2W17\_00

### CORNER WITNESS DETAIL

SCALE 1" = 40'



- A - Boone County witness mark, flush, 67.9'
- B - Mag nail set in S. side wood post, 2' a.g., 25.5'
- C - Mag nail set in N. side power pole, 2' a.g., 55.1'
- D - Mag nail set in N. side wood post, 2' a.g., 40.2'



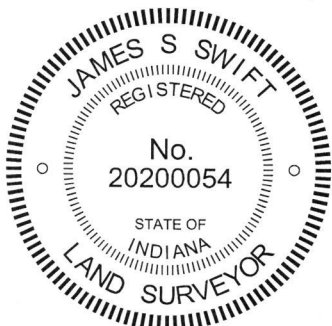
The Harrison Monument was set in place of a vertical section of railroad rail found.

No specific descriptions of this corner were found in the BCS Surveyor's Record beyond the original establishment of the corner as a wood post in 1820.

A BCS tie card dated August 23, 1967 shows the corner as "No stone." A BCS tie card dated May 19, 1994 shows the corner as a railroad spike. It is noted that the distance ties to corner posts in the northeast and northwest quadrants of the intersection do not match on the two tie cards.

This corner was excavated on October 9, 2018. Prior to excavation, a railroad spike was found at the surface of the road near the center of the intersection of the two roads. Prior to excavation, it appeared that the railroad spike was slightly southwest of the most probable location of the original corner, as determined by the centers of the roads in all four directions. The area of excavation was offset towards the northeast of the spike and was not centered on the spike for this reason.

Excavation revealed a vertical section railroad rail found at 8 inches deep 1.4 feet north and 1.7 feet east of the railroad spike. Further excavation of a rectangular area extending 2 feet south and 2 feet west of the railroad spike and 1.5 feet north and 1.5 feet east of the railroad rail revealed no further evidence of the corner. The bottom of the road bed was found at 10 inches deep. Excavation was performed to at least 12 inches deep. The vertical section of railroad rail is believed to have been set in association with the 1967 tie card, as it is known that setting railroad rails was the standard operating procedure of BCS field crews in the late 1960s and early 1970s. The variation in the positions of the spike and rail match the relative variations in the distance ties to the corner posts noted above. The rail was clearly in place before the spike was set and fits better with the evidence of the original corner in the form of the center of the roads. The rail was held as marking the corner. Both monuments were removed during excavation and a Harrison monument was set in the position of the rail.



*Kenneth E. Hedge*  
 Kenneth E. Hedge, County Surveyor

Jefferson Township

*James S. Swift*  
 James S. Swift, IN LS 20200054

Jackson Township

October 31, 2018

Section 7 T18N, R2W	Section 8 T18N, R2W
Section 18 T18N, R2W	Section 17 T18N, R2W

# SECTION CORNER RECORD

SW 200-1150

## BOONE COUNTY SURVEYOR'S OFFICE

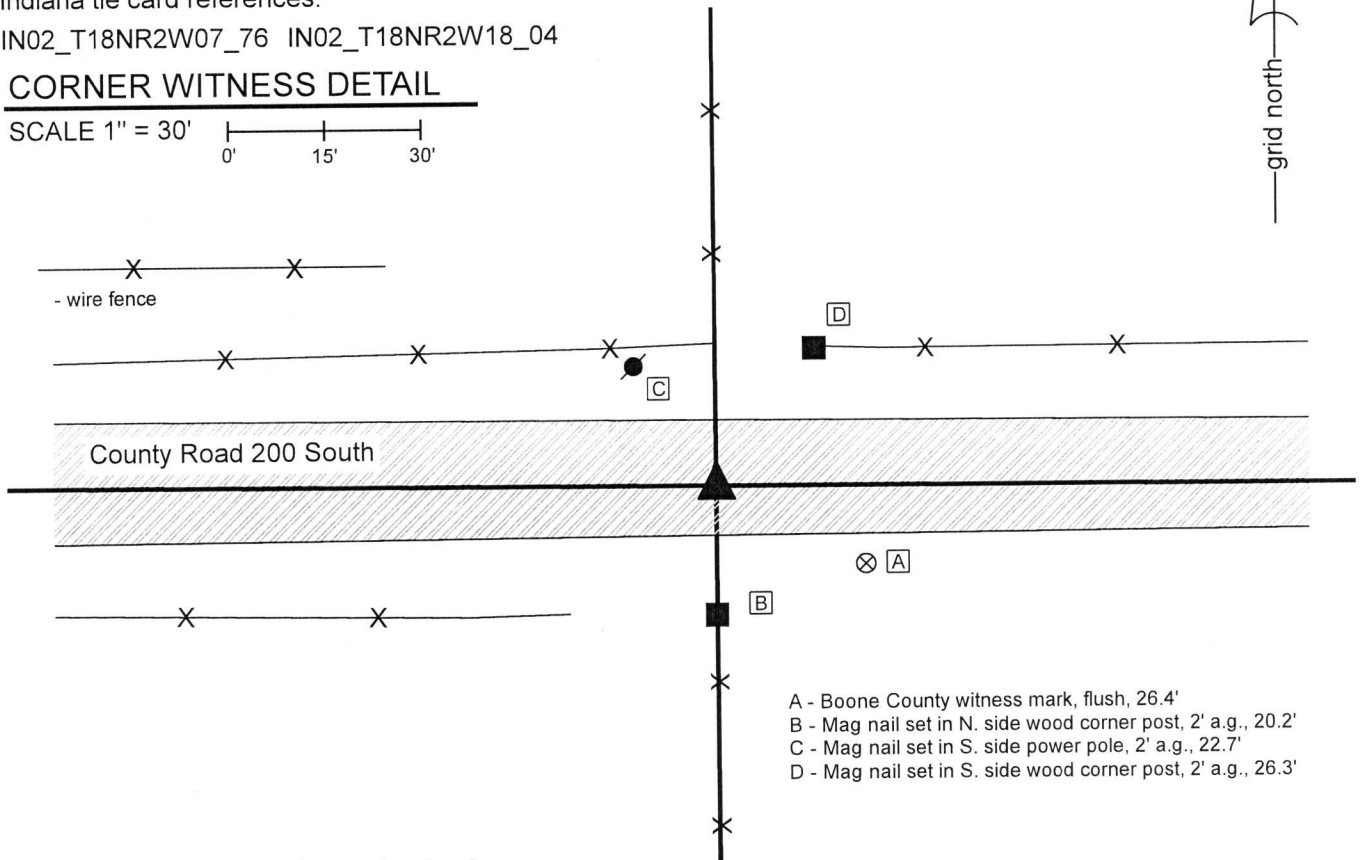
State Plane grid coordinates NAD83 (2011):  
North: 1734695.55 East: 3064068.12 (U.S. survey feet)

Type of monument: Harrison, 4" disk 'Section Corner'  
Depth: One inch below adjacent road surface

Indiana tie card references:  
IN02\_T18NR2W07\_76 IN02\_T18NR2W18\_04

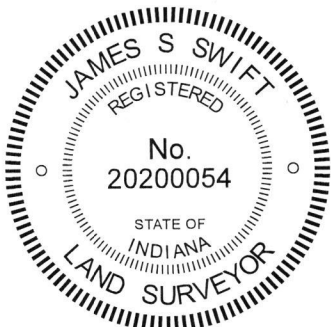
### CORNER WITNESS DETAIL

SCALE 1" = 30'



- A - Boone County witness mark, flush, 26.4'
- B - Mag nail set in N. side wood corner post, 2' a.g., 20.2'
- C - Mag nail set in S. side power pole, 2' a.g., 22.7'
- D - Mag nail set in S. side wood corner post, 2' a.g., 26.3'

The Harrison monument was set over a stone found.  
No specific descriptions of this corner were found in the BCS Surveyor's Record beyond the original establishment of the corner as a wood post in 1820. The corner is referenced as the terminal point for measurements in an entry of 1844, indicating that some monument was present from which to measure at that time. A BCS tie card dated May 19, 1994 shows the corner as a rebar in the center of the east-west county road, in-line with fences to the north and south.  
Excavation was performed as this corner on October 17, 2019. Prior to excavation, a 5/8 inch rebar was found at the surface of the road in agreement with the 1994 distance ties. Excavation revealed a stone found at 17 inches deep, slightly east of the rebar. The stone was found to be 10 inches N-S by 6 inches E-W by 10 inches tall, as measured on the north edge. The stone was oriented in cardinal directions and embedded in the clay layer below the road, with the top of the stone coincident with the bottom of the road bed. No specific marks were observed on the stone. The character of the stone, being generally horizontal, oriented in cardinal directions but not bearing any chiseled marks, matches the character of stones found at other corners for which the records are similar, with early measurement references but no specific description of the monument.  
The stone was accepted as the best available evidence of the corner and a Harrison monument was set over the top, center of the stone. The rebar, removed during excavation, had been near the northwest corner of the stone, 0.2 foot north and 0.6 foot west of the point held as the corner.



*Kenneth E. Hedge*  
Kenneth E. Hedge, County Surveyor

*James S. Swift*  
James S. Swift, IN LS 20200054  
December 11, 2019

Jefferson  
Township

Section 7  
T18N, R2W

Jackson  
Township

Section 18  
T18N, R2W

# SECTION CORNER RECORD

SW 200-1200

## BOONE COUNTY SURVEYOR'S OFFICE

State Plane grid coordinates NAD83 (2011):

Corner 1: North: 1734781.17 East: 3061339.97 (U.S. survey feet)  
 Corner 2: North: 1734696.70 East: 3061340.70 (U.S. survey feet)

Corner 1: 5/8 inch diameter rebar with aluminum cap stamped 'Montgomery County Surveyor' 1 inch deep

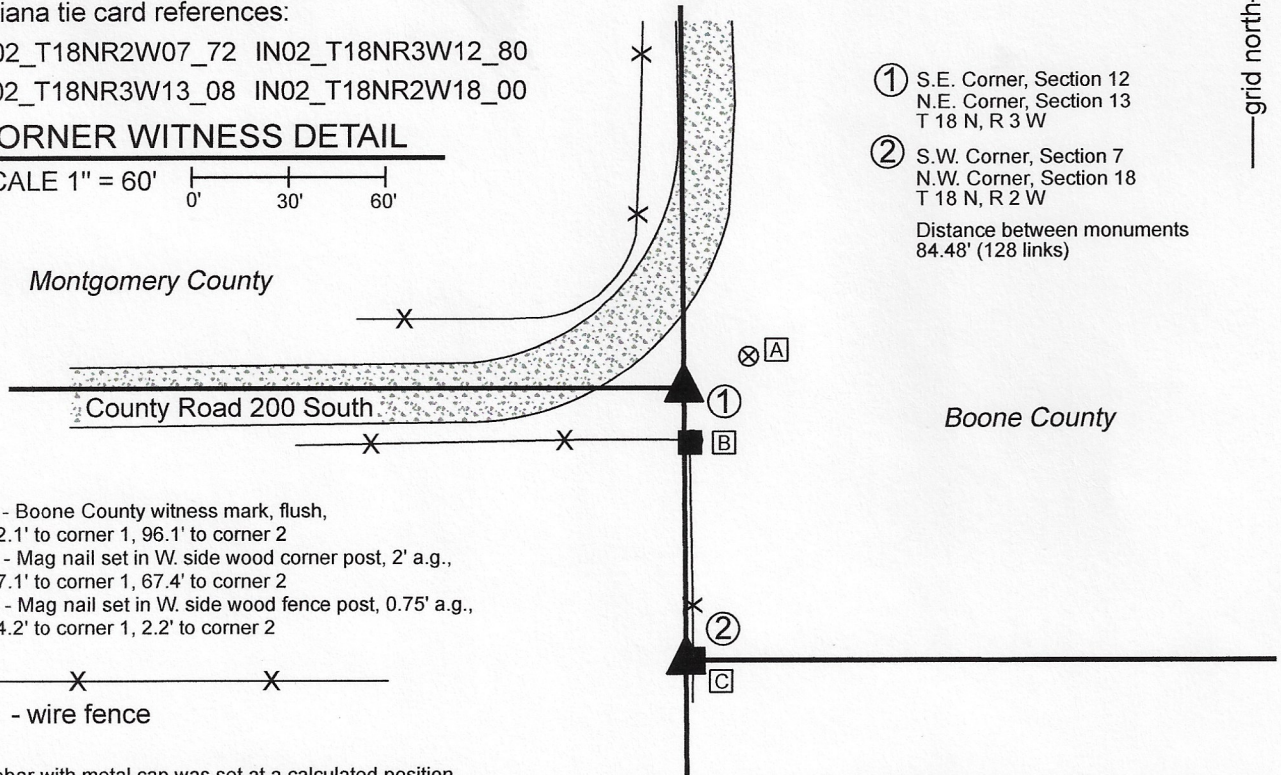
Corner 2: 5/8 inch diameter rebar with aluminum cap stamped 'Boone County Surveyor' 24 inches long, 14 inches deep.

Indiana tie card references:

IN02\_T18NR2W07\_72 IN02\_T18NR3W12\_80  
 IN02\_T18NR3W13\_08 IN02\_T18NR2W18\_00

### CORNER WITNESS DETAIL

SCALE 1" = 60'



- ① S.E. Corner, Section 12  
N.E. Corner, Section 13  
T 18 N, R 3 W
- ② S.W. Corner, Section 7  
N.W. Corner, Section 18  
T 18 N, R 2 W

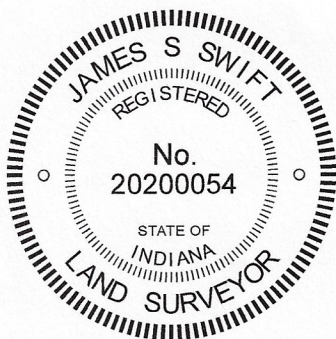
Distance between monuments  
84.48' (128 links)

- A - Boone County witness mark, flush,  
22.1' to corner 1, 96.1' to corner 2
- B - Mag nail set in W. side wood corner post, 2' a.g.,  
17.1' to corner 1, 67.4' to corner 2
- C - Mag nail set in W. side wood fence post, 0.75' a.g.,  
84.2' to corner 1, 2.2' to corner 2

- wire fence

The rebar with metal cap was set at a calculated position.

No specific descriptions of this corner were found in the BCS Surveyor's Record beyond the original establishment of the corner 128 links south of the standard corner un 1820. No recent BCS tie cards were found referencing the corner. A Section Corner Dossier provided by the Office of the Montgomery County Surveyor dated August 16, 2017 shows the standard corner as being set with respect to information and distances shown in Montgomery County records from 1898 and 1899. The rebar set by Montgomery County was found in good condition, per the dossier. The rebar is approximately 2 feet west of the existing fence which bears south from slightly south of the Montgomery County corner. The dossier indicates that distances referenced in the 1898 and 1899 record were held over the physical fence, and notes that the position of the corner is in substantial agreement with the fence. The range line, as defined by the Montgomery County rebar at the standard corner and a concrete post at the east quarter corner of section 13, T18N, R3W, was held. Manual excavation and probing in the vicinity of the Boone County corner did not reveal further evidence of the corner. The specific position of the corner was established at the record federal closing distance of 128 links south of the standard corner. This position falls approximately 2 feet west of the existing fence and falls far enough into the tilled field to require the monument to be buried to avoid disruption by agricultural practices. A 24 inch length of 5/8 inch rebar with metal cap was set at 14 inches deep at this computed position, 2.2 feet west of a wood line post, on November 6, 2020. It is noted that this position fits reasonably well with the westerly prolongation of County Road 200 South in Boone County.



Kenneth E. Hedge, County Surveyor

James S. Swift, IN LS 20200054  
 November 18, 2020

Walnut  
Township  
Montgomery  
County

Section 12 T18N, R3W	Section 7 T18N, R2W
Section 13 T18N, R3W	Section 18 T18N, R2W

Jefferson  
Township  
Boone  
County

Jackson  
Township  
Boone  
County

# SECTION CORNER RECORD

# SW 250-1100

## BOONE COUNTY SURVEYOR'S OFFICE

State Plane grid coordinates NAD83 (2011):  
North: 1732045.29 East: 3066720.75 (U.S. survey feet)

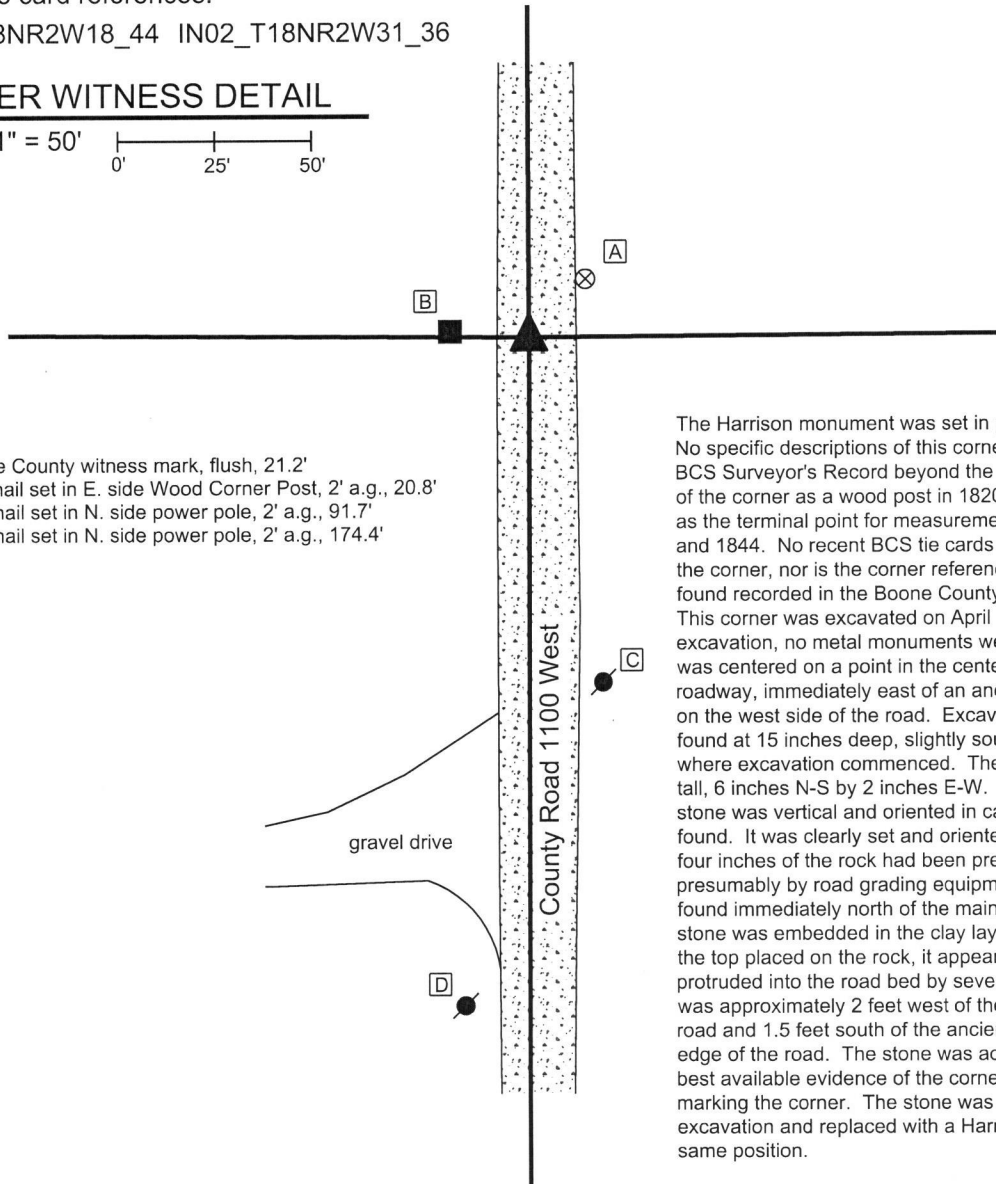
Type of monument: Harrison, 4" disk 'Section Corner'  
Depth: Six inches below adjacent gravel road surface

Indiana tie card references:  
IN02\_T18NR2W18\_44 IN02\_T18NR2W31\_36

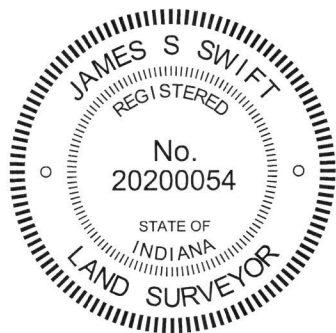
### CORNER WITNESS DETAIL

SCALE 1" = 50'  
0' 25' 50'

- A - Boone County witness mark, flush, 21.2'
- B - Mag nail set in E. side Wood Corner Post, 2' a.g., 20.8'
- C - Mag nail set in N. side power pole, 2' a.g., 91.7'
- D - Mag nail set in N. side power pole, 2' a.g., 174.4'



The Harrison monument was set in place of a stone found. No specific descriptions of this corner were found in the BCS Surveyor's Record beyond the original establishment of the corner as a wood post in 1820. The corner is noted as the terminal point for measurements in entries of 1834 and 1844. No recent BCS tie cards were found referencing the corner, nor is the corner referenced on any surveys found recorded in the Boone County Recorder's Office. This corner was excavated on April 12, 2019. Prior to excavation, no metal monuments were found. Excavation was centered on a point in the center of the north-south roadway, immediately east of an ancient wood corner post on the west side of the road. Excavation revealed a stone found at 15 inches deep, slightly southwest of the point where excavation commenced. The stone was 12 inches tall, 6 inches N-S by 2 inches E-W. Though not large, the stone was vertical and oriented in cardinal directions, as found. It was clearly set and oriented by humans. The top four inches of the rock had been previously broken off, presumably by road grading equipment. This portion was found immediately north of the main body of the rock. The stone was embedded in the clay layer below the road. With the top placed on the rock, it appeared that it would have protruded into the road bed by several inches. The stone was approximately 2 feet west of the center of the gravel road and 1.5 feet south of the ancient post on the west edge of the road. The stone was accepted as providing the best available evidence of the corner and was held as marking the corner. The stone was removed during excavation and replaced with a Harrison monument in the same position.



*Kenneth E. Hedge*  
Kenneth E. Hedge, County Surveyor

*James S. Swift*  
James S. Swift, IN LS 20200054  
April 30, 2019

Jackson Township

Section 18 T18N, R2W	Section 17 T18N, R2W
-------------------------	-------------------------

# SECTION CORNER RECORD

# SW 250-1200

## BOONE COUNTY SURVEYOR'S OFFICE

State Plane grid coordinates NAD83 (2011):

Corner 1: North: 1732129.82 East: 3061362.90 (U.S. survey feet)

Corner 2: North: 1732038.41 East: 3061363.89 (U.S. survey feet)

Corner 1: Wood corner post, standing

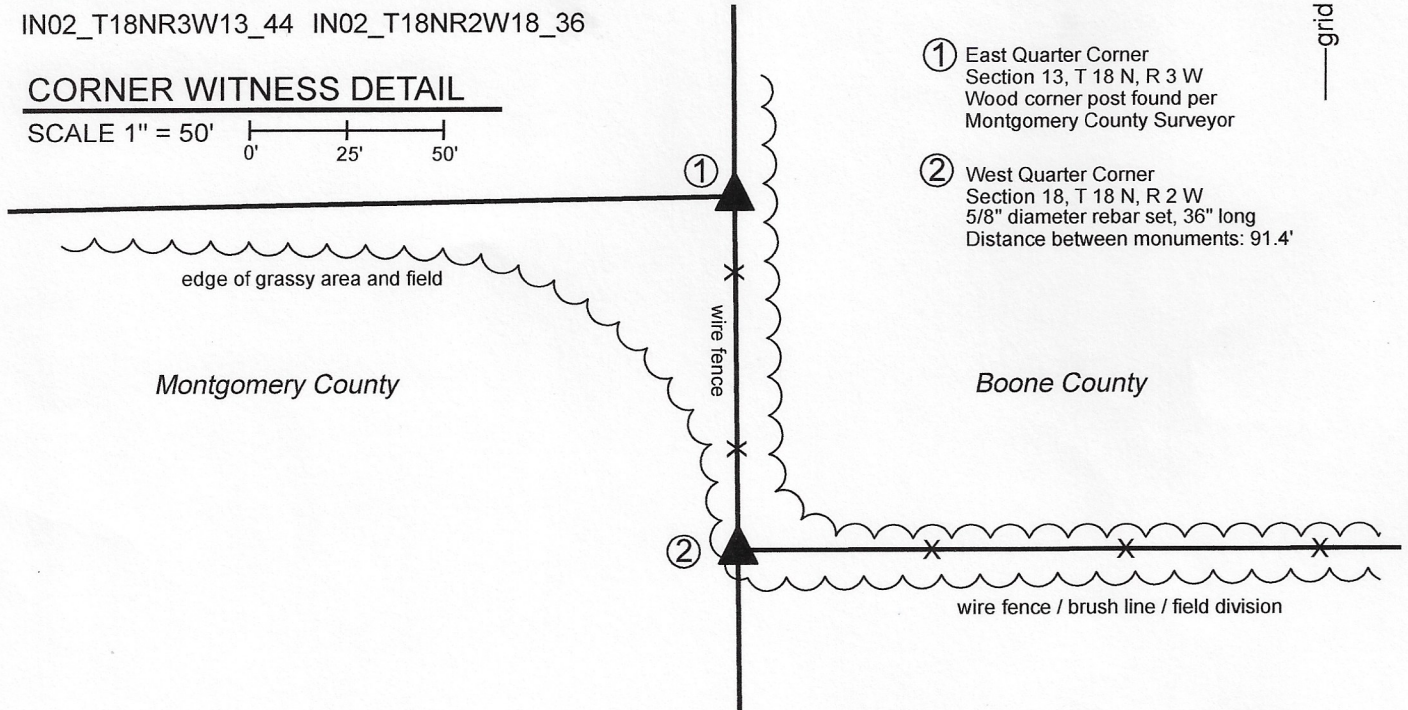
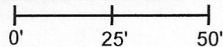
Corner 2: 5/8 inch diameter rebar, 36 inches long, with metal cap stamped 'Boone County Surveyor', 2 inches above grade

Indiana tie card references:

IN02\_T18NR3W13\_44 IN02\_T18NR2W18\_36

### CORNER WITNESS DETAIL

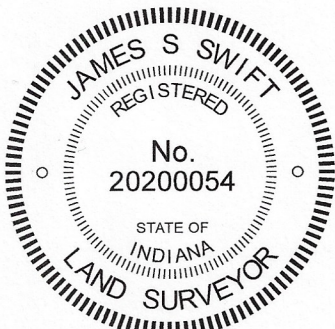
SCALE 1" = 50'



① East Quarter Corner  
Section 13, T 18 N, R 3 W  
Wood corner post found per  
Montgomery County Surveyor

② West Quarter Corner  
Section 18, T 18 N, R 2 W  
5/8" diameter rebar set, 36" long  
Distance between monuments: 91.4'

The rebar with metal cap was set on the range line, as defined by a wood corner post at Corner 1 and a rebar with a Montgomery County cap at the southeast corner of section 13, T18N, R3W, adjacent to the west edge of a wood corner post. No specific descriptions of this corner were found in the BCS Sureyor's Record. An entry of October 16, 1844 shows the corner as a measurement reference but does not specify what monument may have been set at the corner. No recent BCS tie cards were found referencing the corner. A Section Corner Dossier sheet dated March 24, 2017, provided by the Office of the Montgomery County Surveyor, shows Corner 1 as a wood corner post. Corner 2 was excavated on November 3 and 4, 2020. Prior to excavation, the post called in the Montgomery County Dossier was found marking Corner 1 and a seven-inch diameter round wood corner post was found providing evidence of Corner 2. Excavation around the round wood post revealed numerous stones, none of which appeared to be corner stones, purposely set to mark the corner. The two corner posts are separated 91.4 feet. The average federal closing distance at this corner is 132 links, or 87.12 feet. The round wood corner post, being at the intersection of fences to the east and north and being in-line with a field division to the south, and also being close to the record offset from Corner 1, was held as the best available evidence of the corner. The physical post is slightly east of the range line, defined by the adjacent Montgomery County corners. The precise position of the corner was established on the range line, immediately adjacent to the west side of the post. The post is leaning slightly to the northeast. The corner was established per the base of the post, in the ground. The in-ground portion of the base of the post is too close to the corner to allow for a Harrison monument, hence a rebar was set at the corner. The corner monument is a 36-inch length of 5/8 inch rebar with metal cap stamped 'Boone County Surveyor' set in concrete, adjacent to the base of the post.



*Kenneth E. Hedge*  
Kenneth E. Hedge, County Surveyor

*James S. Swift*

James S. Swift, IN LS 20200054

November 23, 2020

Walnut Township Montgomery County	Jackson Township Boone County
--------------------------------------	----------------------------------

Section 13 T18N, R3W	Section 18 T18N, R2W
-------------------------	-------------------------

# SECTION CORNER RECORD

SW 300-1100

## BOONE COUNTY SURVEYOR'S OFFICE

State Plane grid coordinates NAD83 (2011):

North: 1729397.70 East: 3066722.34 (U.S. survey feet)

Type of monument: Harrison, 4" disk 'Section Corner'

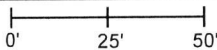
Depth: One inch below adjacent road surface

Indiana tie card references:

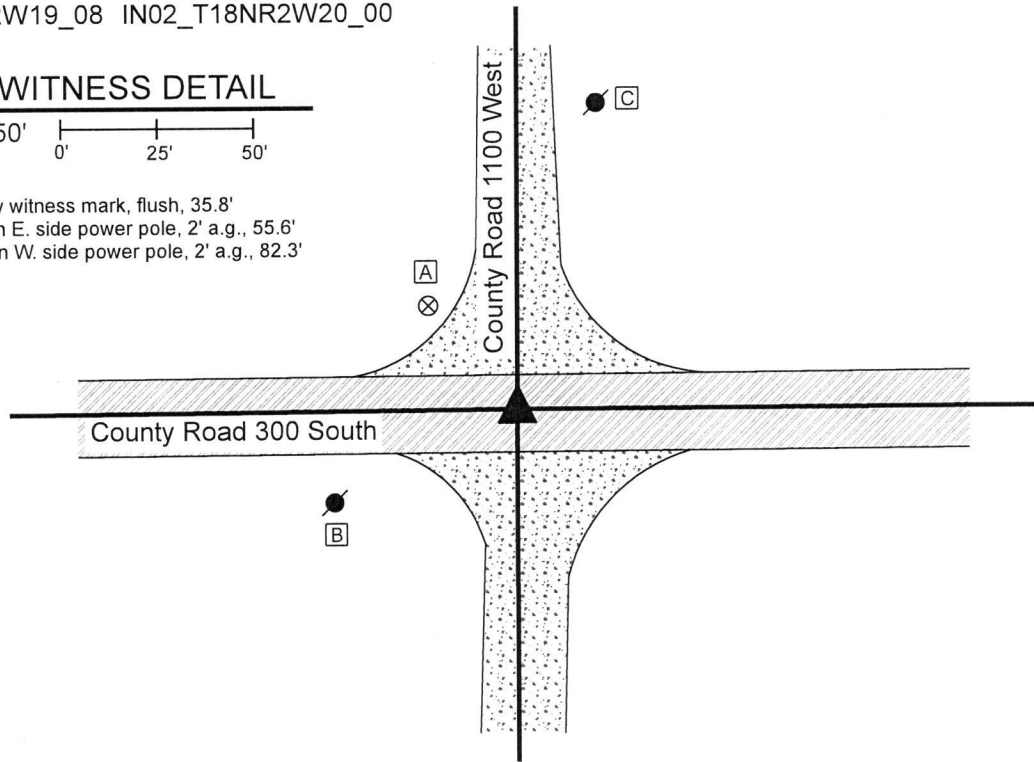
IN02\_T18NR2W18\_80 IN02\_T18NR2W17\_72

IN02\_T18NR2W19\_08 IN02\_T18NR2W20\_00

### CORNER WITNESS DETAIL

SCALE 1" = 50' 

- A - Boone County witness mark, flush, 35.8'
- B - Mag nail set in E. side power pole, 2' a.g., 55.6'
- C - Mag nail set in W. side power pole, 2' a.g., 82.3'



The Harrison monument was set over a stone found.

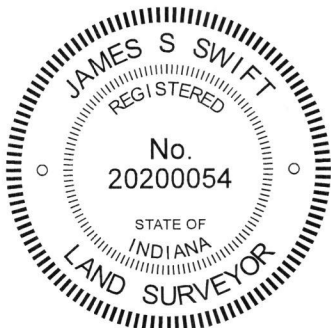
A BCS record of August 24, 1888 states, with respect to this corner, "Reestablished from stump of Oak bearing tree, made when same corner was reestablished April 8, 1867 (old stake had been in place). Set two rocks. One 14,7,3 +. Top one 15,14,7 + SE corner of brick school house bears N 52 1/4 W 99 links." A subsequent record of September 23, 1912 states "Relocated from roots of stump of Oak W. Two rocks, one 14x7x3 +. Top one 15x14x7 +." The 1912 record also calls for the witness to the corner of the brick school house.

A BCS tie card dated August 23, 1974 shows the corner, but does not state what monument was set or found.

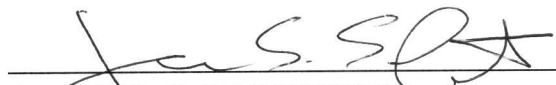
This corner was excavated on October 18, 2019. Prior to excavation, a railroad spike was found at 7 inches below grade. Excavation revealed a vertical section of railroad rail found at 13 inches deep, directly below the railroad spike. It is considered most likely that the railroad rail was set in association with the creation of the 1974 tie card.

Further excavation revealed a stone found at 24 inches deep, slightly northeast of the rail and spike. The stone is 14 inches N-S by 7 inches E-W by 15 inches tall, as measured on the east side. An etched "+" mark was distinctly visible on the top, center of the stone. Probing indicated that another stone is situated below the stone which was exposed. The stones were accepted as being the same monuments described in the 1888 and 1912 records and held as marking the corner. The stones were left in place and a Harrison monument was set directly over the etched mark on the top of the upper stone. The railroad spike and railroad rail, both removed during excavation, had been 0.6 foot south and 0.8 foot east of the mark on the stone.

This corner was originally established as a wood post in 1820.



  
 Kenneth E. Hedge, County Surveyor

  
 James S. Swift, IN LS 20200054  
 December 11, 2019

Jackson Township

Section 18 T18N, R2W	Section 17 T18N, R2W
Section 19 T18N, R2W	Section 20 T18N, R2W

A north arrow is located between the top and bottom rows of the table, pointing upwards.

# SECTION CORNER RECORD

SW 300-1150

## BOONE COUNTY SURVEYOR'S OFFICE

State Plane grid coordinates NAD83 (2011):

North: 1729385.67 East: 3064080.92 (U.S. survey feet)

Type of monument: Harrison, 4" disk 'Section Corner'

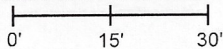
Depth: One inch below adjacent road surface

Indiana tie card references:

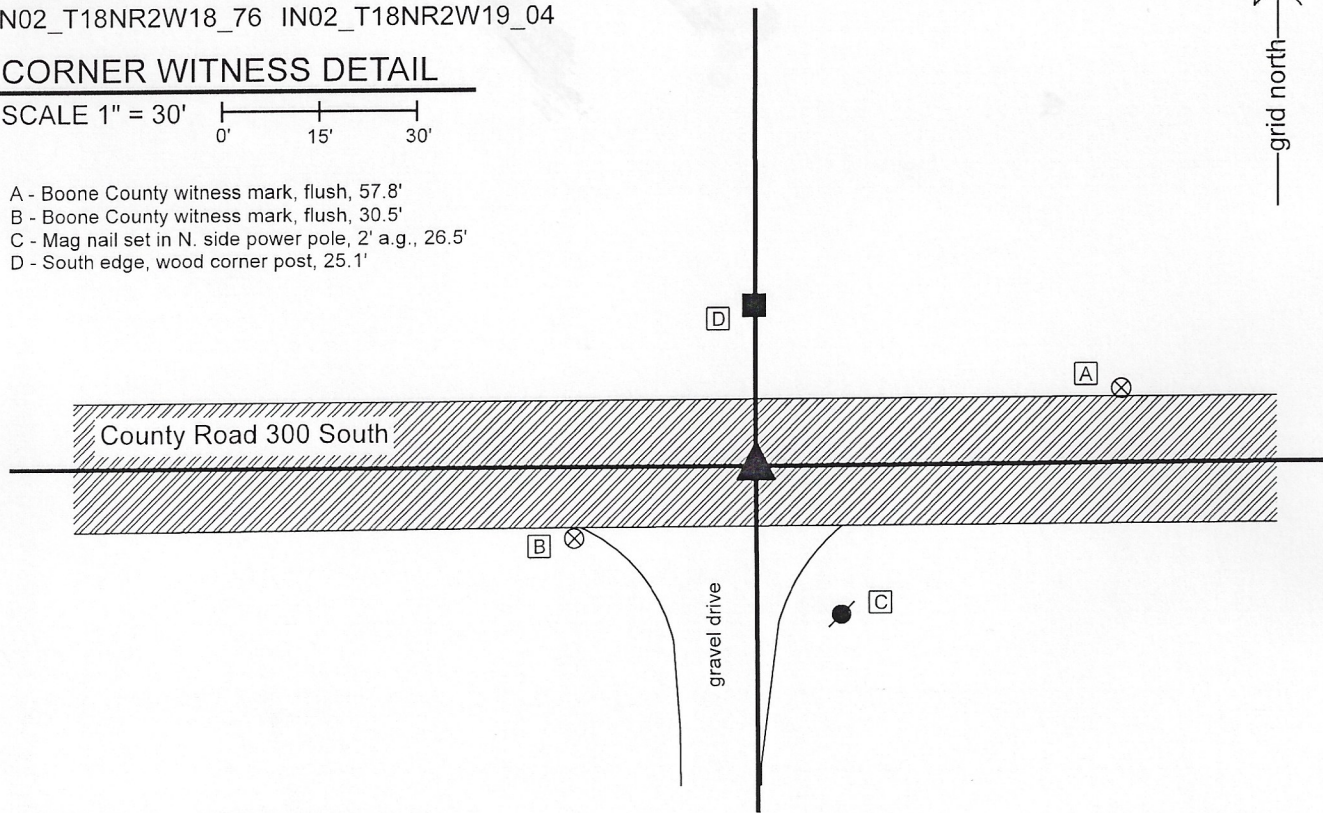
IN02\_T18NR2W18\_76 IN02\_T18NR2W19\_04

### CORNER WITNESS DETAIL

SCALE 1" = 30'



- A - Boone County witness mark, flush, 57.8'
- B - Boone County witness mark, flush, 30.5'
- C - Mag nail set in N. side power pole, 2' a.g., 26.5'
- D - South edge, wood corner post, 25.1'



The Harrison monument was set over a stone found.

A BCS record of April 9, 1907 states, with respect to this corner, "Reestablished from measure. Set rock 9,10,18 + on side. Rock marked W N. 12 feet." No recent BCS tie cards were found referencing this corner.

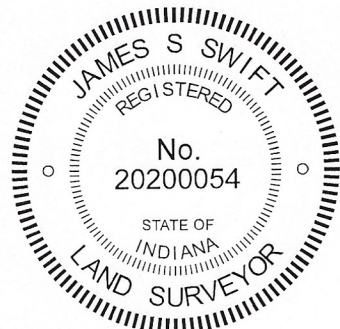
Excavation was performed at this corner on June 26, 2020. Prior to excavation, a railroad spike was found at 6 inches below grade, slightly west of an ancient wood corner post on the north side of the road. Excavation revealed the stone described in the 1907 record at 17 inches deep, slightly east of the railroad spike. As found, the stone appeared to be leaning toward the north. A distinct etched "+" mark was observed on the sloping south side, 3 inches south of the highest point of the stone as found. The stone was removed from the road and measured. The stone matched the dimensions called in the 1907 record. Replaced in the ground in the same position, but stood up vertically, the stone was 9 inches E-W by 10 inches N-S by 18 inches tall, and the top of the stone was in the same position as the "+" mark had originally been found on the stone as leaning to the north. The stone was accepted as being the same monument called in the 1907 record. The position of the stone fit quite well with proportional distances to the section corners to the east and west with respect to the original federal dimensions. The stone also fit well with local evidence in the form of being in the east-west roadway, in-line with the ancient fence to the north. The stone was left in place, as stood up, and a Harrison monument was set over the top of the stone, at the position of the "+" mark as originally found. The railroad spike, removed during excavation, had been 0.3 foot north and 0.8 foot west of the position held as the corner. No other evidence or monument was found below the railroad spike.

This corner was originally established as a wood post in 1820.

Jackson  
Township

Section 18  
T18N, R2W

Section 19  
T18N, R2W



  
Kenneth E. Hedge, County Surveyor

  
James S. Swift, IN LS 20200054

July 7, 2020

# SECTION CORNER RECORD

# SW 300-1200

## BOONE COUNTY SURVEYOR'S OFFICE

State Plane grid coordinates NAD83 (2011):

Corner 1: North: 1729476.91 East: 3061391.56 (U.S. survey feet)

Corner 2: North: 1729374.56 East: 3061393.16 (U.S. survey feet)

Corner 1: Montgomery County Section Corner rebar found

Corner 2: Harrison, 4" disk 'Section Corner'

4 inches above adjacent ground

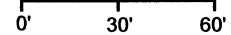
Indiana tie card references:

IN02\_T18NR2W18\_72 IN02\_T18NR3W13\_80

IN02\_T18NR3W24\_08 IN02\_T18NR2W19\_00

### CORNER WITNESS DETAIL

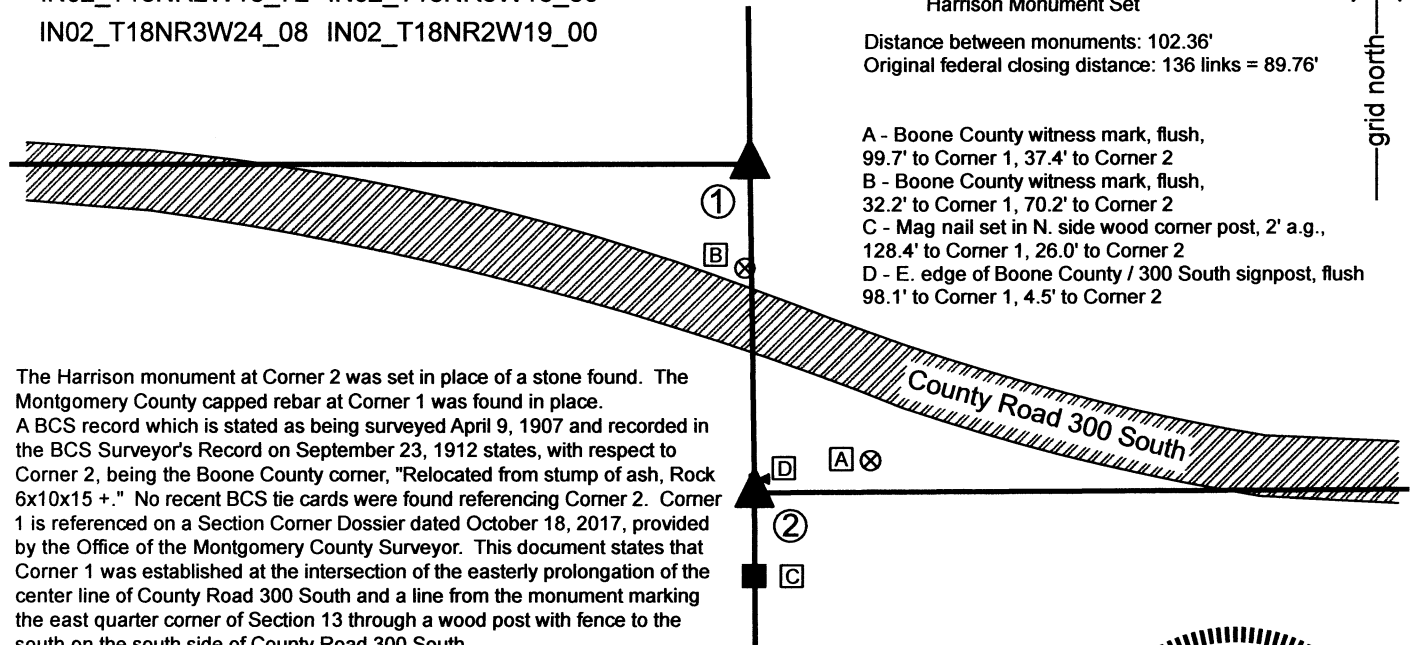
SCALE 1" = 60'



- ① S.E. Corner, Section 13  
N.E. Corner, Section 24  
T 18 N, R 3 W  
Montgomery County rebar found
- ② S.W. Corner, Section 18  
N.W. Corner, Section 19  
T 18 N, R 2 W  
Harrison Monument Set

Distance between monuments: 102.36'  
Original federal closing distance: 136 links = 89.76'

- A - Boone County witness mark, flush, 99.7' to Corner 1, 37.4' to Corner 2
- B - Boone County witness mark, flush, 32.2' to Corner 1, 70.2' to Corner 2
- C - Mag nail set in N. side wood corner post, 2' a.g., 128.4' to Corner 1, 26.0' to Corner 2
- D - E. edge of Boone County / 300 South signpost, flush 98.1' to Corner 1, 4.5' to Corner 2



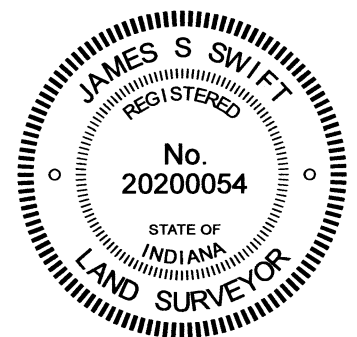
The Harrison monument at Corner 2 was set in place of a stone found. The Montgomery County capped rebar at Corner 1 was found in place. A BCS record which is stated as being surveyed April 9, 1907 and recorded in the BCS Surveyor's Record on September 23, 1912 states, with respect to Corner 2, being the Boone County corner, "Relocated from stump of ash, Rock 6x10x15 +." No recent BCS tie cards were found referencing Corner 2. Corner 1 is referenced on a Section Corner Dossier dated October 18, 2017, provided by the Office of the Montgomery County Surveyor. This document states that Corner 1 was established at the intersection of the easterly prolongation of the center line of County Road 300 South and a line from the monument marking the east quarter corner of Section 13 through a wood post with fence to the south on the south side of County Road 300 South.

This corner was excavated on May 13, 2021. Prior to excavation, the capped rebar referenced in the Montgomery County Dossier was found in good condition, evidently undisturbed. The wood post referenced in that document was also found. For search purposes, two different positions were computed for Corner 2. One position was computed at the original federal closing distance of 136 links or 89.76 feet. The other position was computed at the westerly prolongation of the line connecting stones found at the northeast and north quarter corners of Section 19. This position fell approximately 14 feet south of the position computed with respect to the federal closing distances, but fell in-line not only with the stones found to the east, but also in-line with the westerly prolongation of the physical center of County Road 300 South in Boone County. Excavation revealed the stone called for in the 1907/1912 record within one foot of the southerly computed position. The stone was found at 4 inches deep. As found, the stone measured 15 inches N-S by 10 inches E-W by 6 inches thick. Half of an etched "+" mark was found at the north edge of the stone. The remainder of the mark appeared to have been broken off from the stone, along with a portion of the stone. It is most likely that the stone previously stood vertical but has been knocked over to the north. Otherwise, the stone appeared undisturbed, slightly below the existing surface, and, as noted, remarkably close to a position computed with respect to the stones previously found to the east. It is observed that measurement references in the 1907/1912 record imply that the north quarter corner of Section 19 was established on-line with the northeast and northwest corners. Hence, the alignment of the three found stones matches the 1907/1912 record. The stone was held as marking the corner. The stone was removed and replaced with a Harrison monument in the same position as the top, center of the stone, as found. Typically, the Boone County corners, being the closing corners, are established on the range line as defined by the Montgomery County corners, being the standard corners. However, in this case, it is specifically stated on the Montgomery County dossier that Corner 1 was set in-line with the fence post to the south. The center of the found stone fell approximately 0.9 foot east of the line defined by the adjacent Montgomery County corners. The stone is clearly the most ancient and reliable evidence of the corner and was held as marking the corner. Hence, the Harrison monument set at Corner 2 is slightly east of the range line as purely defined by the Montgomery County corners.

As discussed above, the found stone fits remarkably well with the evidence of the stones found marking corners to the east, the 1907/1912 BCS record and the center of County Road 300 South but falls significantly further away from Corner 1 than the federal closing distance of 136 links.

This corner was originally established as a wood post in 1820.

Revised 5/31/2023



Walnut Township  
Montgomery County

Jackson Township  
Boone County

Section 13 T18N, R3W	Section 18 T18N, R2W
Section 24 T18N, R3W	Section 19 T18N, R2W

*Carol Cunningham*  
Carol Cunningham, County Surveyor

*James S. Swift*  
James S. Swift, IN LS 20200054 May 19, 2021