

SECTION CORNER RECORD

NW 900-1000

BOONE COUNTY SURVEYOR'S OFFICE

State Plane grid coordinates NAD83 (2011):

North: 1793409.26 East: 3071827.77 (U.S. survey feet)

Type of monument: Harrison, 4" disk 'Section Corner'

Depth: Four inches below adjacent gravel road surface

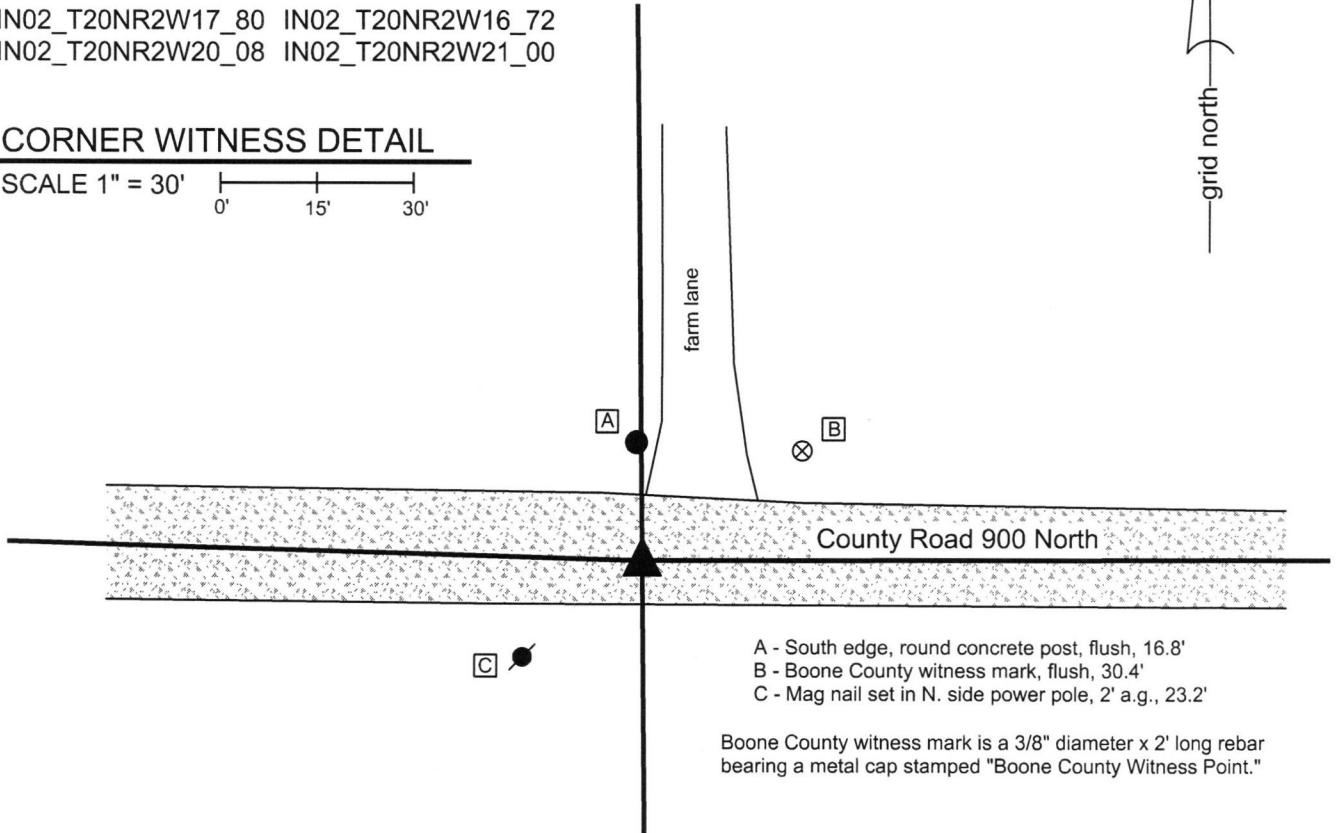
Indiana tie card references:

IN02_T20NR2W17_80 IN02_T20NR2W16_72

IN02_T20NR2W20_08 IN02_T20NR2W21_00

CORNER WITNESS DETAIL

SCALE 1" = 30'
0' 15' 30'



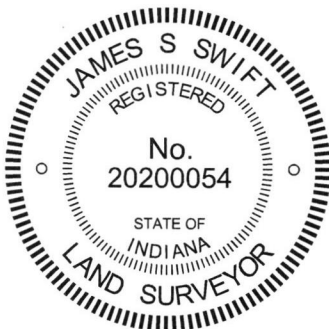
- A - South edge, round concrete post, flush, 16.8'
- B - Boone County witness mark, flush, 30.4'
- C - Mag nail set in N. side power pole, 2' a.g., 23.2'

Boone County witness mark is a 3/8" diameter x 2' long rebar bearing a metal cap stamped "Boone County Witness Point."

The Harrison monument was set over a stone found.

No specific descriptions of this corner were found in the BCS Surveyor's Record, though the corner is referenced as the terminal point for measurements of 1839, 1858, and 1877, indicating that on those occasions some monument was present from which to measure. No recent BCS tie cards were found referencing this corner.

Excavation was performed at this corner on June 24, 2016. Prior to excavation no metal or other artificial monuments were found prior to excavation. Substantial local evidence of the corner was found in the form of the east-west county road and a concrete post on the north side of the road, in-line with a field division and edge of farm lane to the north. It is noted that this position fit well with respect to relative positions of evidence found which indicates the respective locations of the corners one-half and one-quarter mile in both the east and west directions. Excavation at the probable position, based on the found evidence, revealed a stone found at 14 inches deep in the gravel road. With the top 9 inches of the stone exposed, it measured 9 inches E-W by 10 inches N-S and was clearly larger, particularly in the vertical dimension. The stone was fully embedded in the clay layer below the road with the top of the stone at the bottom of the road bed. The north side of the stone was flat and vertical with the high point of the stone being at the north edge of the top. No specific marks were found on the stone. The stone was held as marking the corner. The top 9 inches of the stone were embedded in concrete and a Harrison monument was set directly over the top, high point, near the north edge of the stone. This corner was originally established as a wood post in 1829.



Kenneth E. Hedge

 Kenneth E. Hedge, County Surveyor

James S. Swift

 James S. Swift, IN LS 20200054
 March 23, 2017

Sugar Creek Township

Section 17 T20N, R2W	Section 16 T20N, R2W
Section 20 T20N, R2W	Section 21 T20N, R2W

PHOTOGRAPHIC DOCUMENTATION

Date of photography: June 24, 2016

The stone as it was originally exposed, view from above.



The stone more fully exposed, view from above and north.



The stone as viewed from west.



View from east, looking across the stone and west along County Road 900 North.



View from above the stone, looking north toward the concrete post on the north side of County Road 900 North.



For details and documentation, refer to related sheet "Section Corner Record."

SECTION CORNER RECORD

BOONE COUNTY SURVEYOR'S OFFICE

NW 900-1050

State Plane grid coordinates NAD83 (2011):
 North: 1793486.46 East: 3069162.60 (U.S. survey feet)

Type of monument: Harrison, 4" disk 'Section Corner'
 Depth: One inch below adjacent road surface

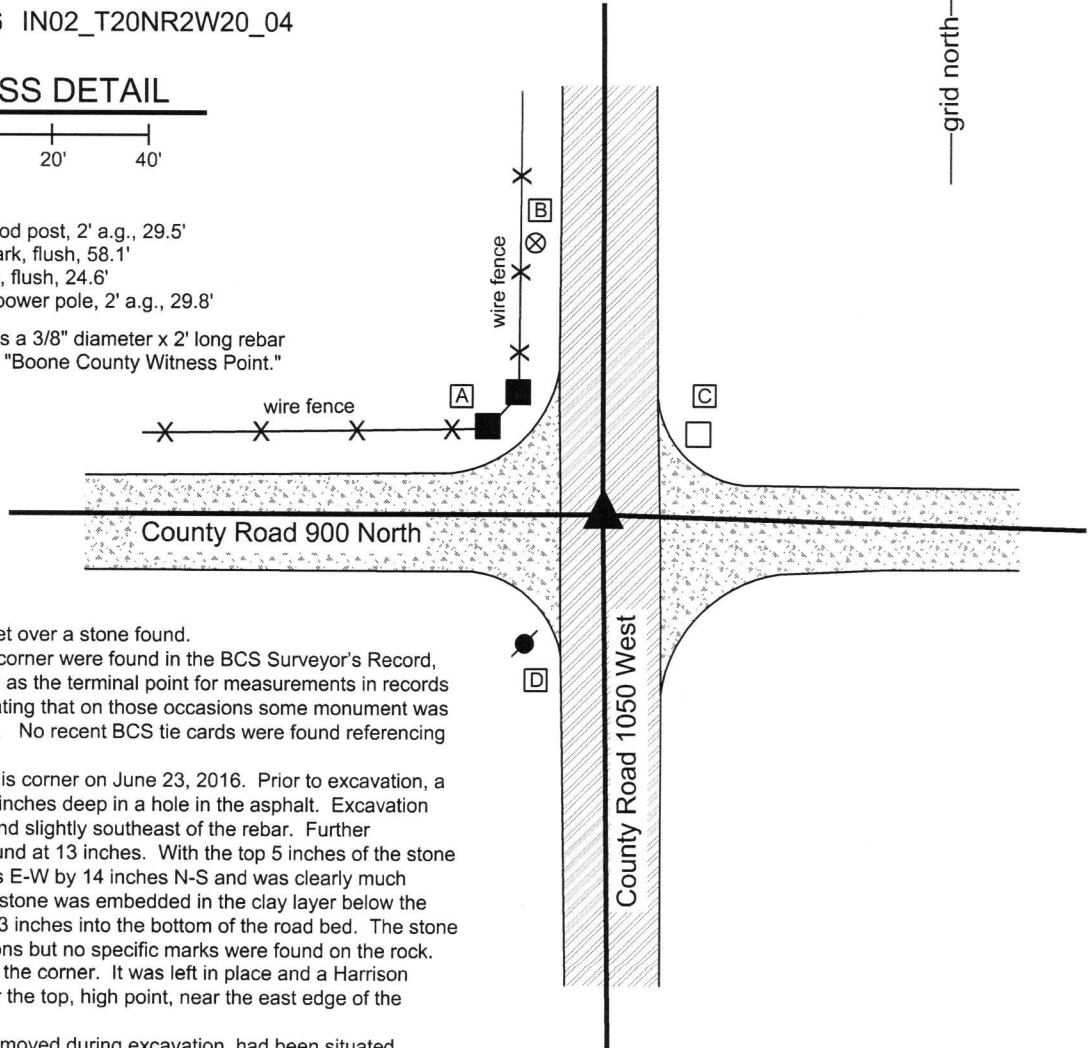
Indiana tie card references:
 IN02_T20NR2W17_76 IN02_T20NR2W20_04

CORNER WITNESS DETAIL

SCALE 1" = 40'

- A - Mag nail set in E. side wood post, 2' a.g., 29.5'
- B - Boone County witness mark, flush, 58.1'
- C - West edge, concrete post, flush, 24.6'
- D - Mag nail set in N.E. side power pole, 2' a.g., 29.8'

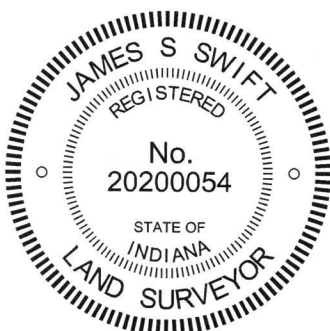
Boone County witness mark is a 3/8" diameter x 2' long rebar bearing a metal cap stamped "Boone County Witness Point."



The Harrison monument was set over a stone found. No specific descriptions of this corner were found in the BCS Surveyor's Record, though the corner is referenced as the terminal point for measurements in records of 1854, 1877, and 1893, indicating that on those occasions some monument was present from which to measure. No recent BCS tie cards were found referencing this corner.

Excavation was performed at this corner on June 23, 2016. Prior to excavation, a railroad spike was found at 1.5 inches deep in a hole in the asphalt. Excavation revealed a rebar found below and slightly southeast of the rebar. Further excavation revealed a stone found at 13 inches. With the top 5 inches of the stone exposed, it measured 11 inches E-W by 14 inches N-S and was clearly much larger yet in all directions. The stone was embedded in the clay layer below the road, protruding approximately 3 inches into the bottom of the road bed. The stone was oriented in cardinal directions but no specific marks were found on the rock. The stone was held as marking the corner. It was left in place and a Harrison monument was set directly over the top, high point, near the east edge of the stone.

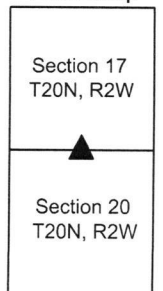
The railroad spike and rebar, removed during excavation, had been situated generally over the stone, approximately 0.3 foot west of the high point of the stone. This corner was originally established as a wood post in 1829.



Kenneth E. Hedge
 Kenneth E. Hedge, County Surveyor

James S. Swift
 James S. Swift, IN LS 20200054
 October 11, 2007

Sugar Creek Township



PHOTOGRAPHIC DOCUMENTATION

Date of photography: June 23, 2016

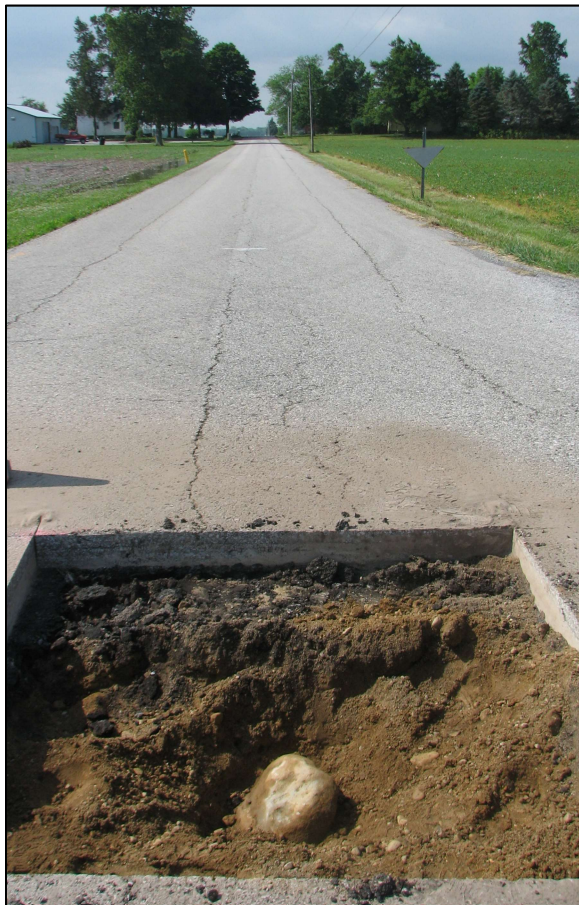
The stone as it was originally exposed, view from above and west.



The stone more fully exposed, view from above and north.



View from north, looking across the stone and south along County Road 1050 West.



View from west, looking across the stone and east along County Road 900 North.



For details and documentation, refer to related sheet "Section Corner Record."

SECTION CORNER RECORD

BOONE COUNTY SURVEYOR'S OFFICE

NW 900-1100

State Plane grid coordinates NAD83 (2011):

North: 1793486.98 East: 3066498.97 (U.S. survey feet)

Type of monument: Harrison, 4" disk 'Section Corner'

Depth: Six inches below adjacent gravel road surface

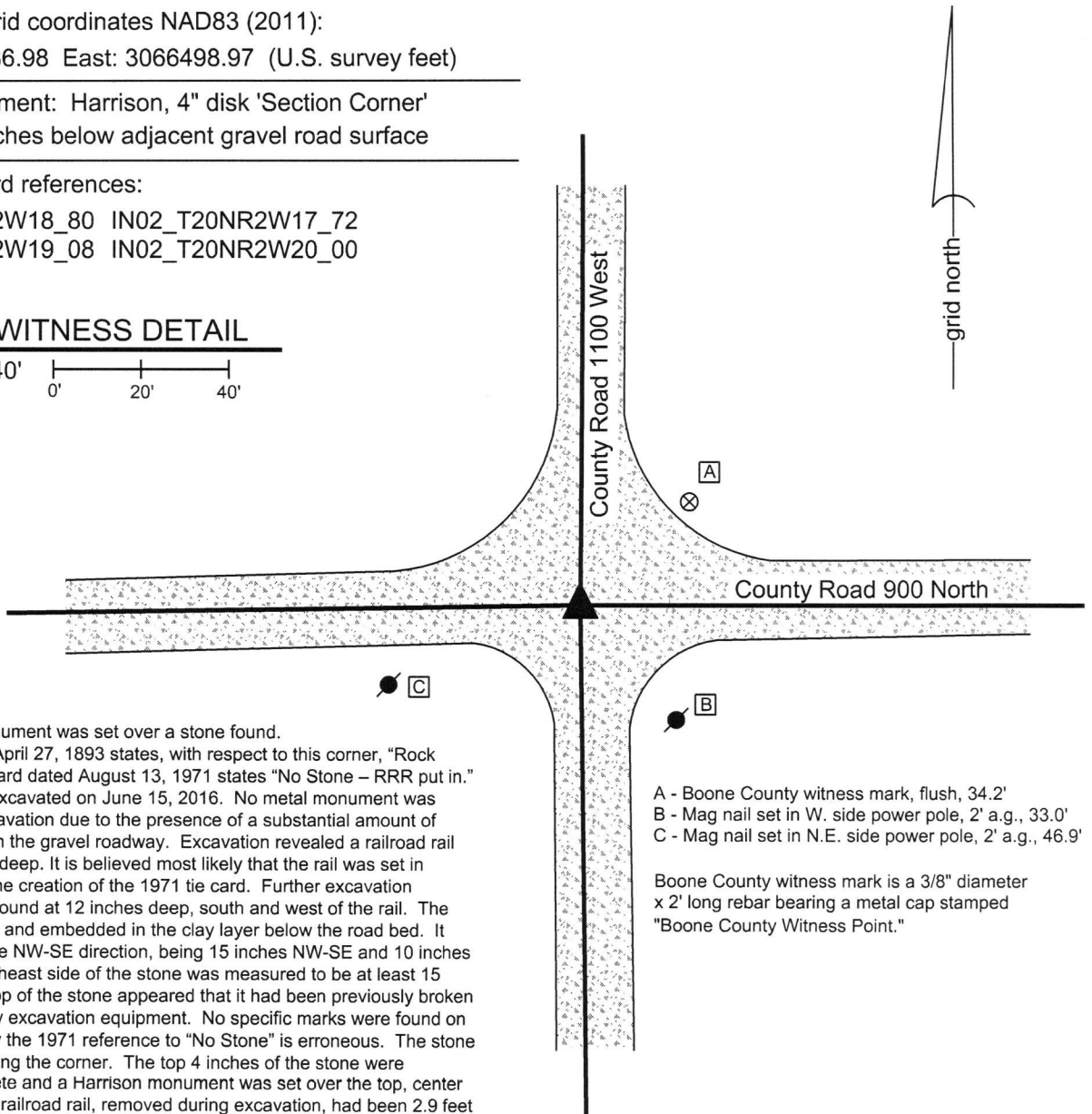
Indiana tie card references:

IN02_T20NR2W18_80 IN02_T20NR2W17_72

IN02_T20NR2W19_08 IN02_T20NR2W20_00

CORNER WITNESS DETAIL

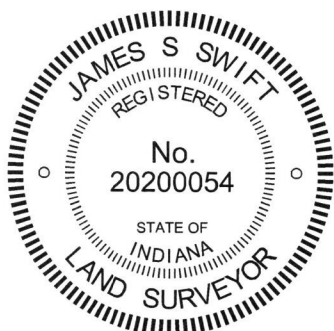
SCALE 1" = 40'



The Harrison monument was set over a stone found. A BCS record of April 27, 1893 states, with respect to this corner, "Rock Set." A BCS tie card dated August 13, 1971 states "No Stone - RRR put in." This corner was excavated on June 15, 2016. No metal monument was found prior to excavation due to the presence of a substantial amount of metallic material in the gravel roadway. Excavation revealed a railroad rail found at 7 inches deep. It is believed most likely that the rail was set in association with the creation of the 1971 tie card. Further excavation revealed a stone found at 12 inches deep, south and west of the rail. The stone was vertical and embedded in the clay layer below the road bed. It was oriented in the NW-SE direction, being 15 inches NW-SE and 10 inches NE-SW. The northeast side of the stone was measured to be at least 15 inches tall. The top of the stone appeared that it had been previously broken off, presumably by excavation equipment. No specific marks were found on the stone. Clearly the 1971 reference to "No Stone" is erroneous. The stone was held as marking the corner. The top 4 inches of the stone were encased in concrete and a Harrison monument was set over the top, center of the stone. The railroad rail, removed during excavation, had been 2.9 feet east and 0.9 foot north of the stone. This corner was originally established as a wood post in 1829.

- A - Boone County witness mark, flush, 34.2'
- B - Mag nail set in W. side power pole, 2' a.g., 33.0'
- C - Mag nail set in N.E. side power pole, 2' a.g., 46.9'

Boone County witness mark is a 3/8" diameter x 2' long rebar bearing a metal cap stamped "Boone County Witness Point."



Kenneth E. Hedge
 Kenneth E. Hedge, County Surveyor

James S. Swift
 James S. Swift, IN LS 20200054
 March 23, 2017

Sugar Creek Township

Section 18 T20N, R2W	Section 17 T20N, R2W
Section 19 T20N, R2W	Section 20 T20N, R2W

PHOTOGRAPHIC DOCUMENTATION

Date of photography: June 15, 2016

The stone partially exposed, view from above and north.



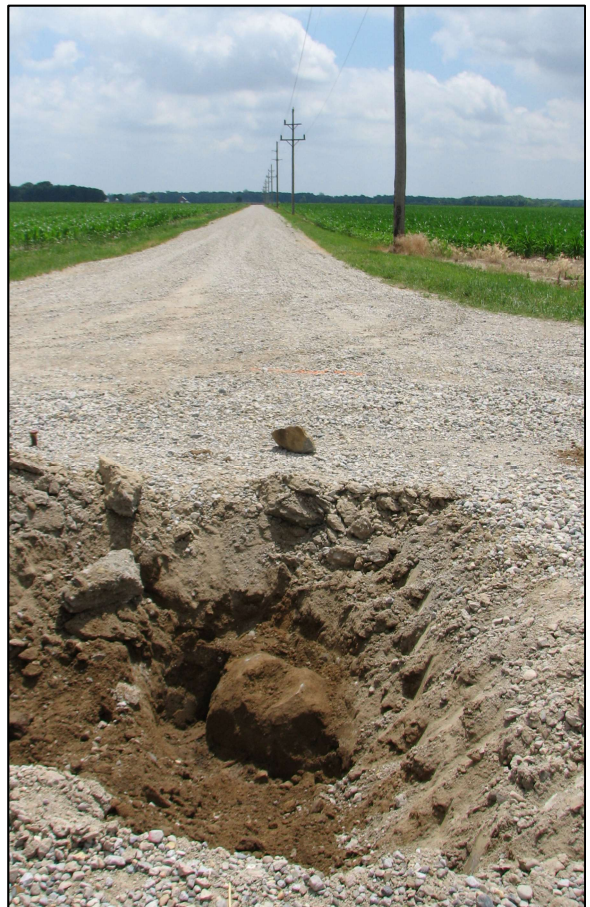
The stone partially exposed, view from above.



View from east, looking across the stone and west along County Road 900 North.



View from north, looking across the stone and south along County Road 1100 West.



For details and documentation, refer to related sheet "Section Corner Record."

SECTION CORNER RECORD

BOONE COUNTY SURVEYOR'S OFFICE

NW 950-1000

State Plane grid coordinates NAD83 (2011):
 North: 1796088.73 East: 3071801.834 (U.S. survey feet)

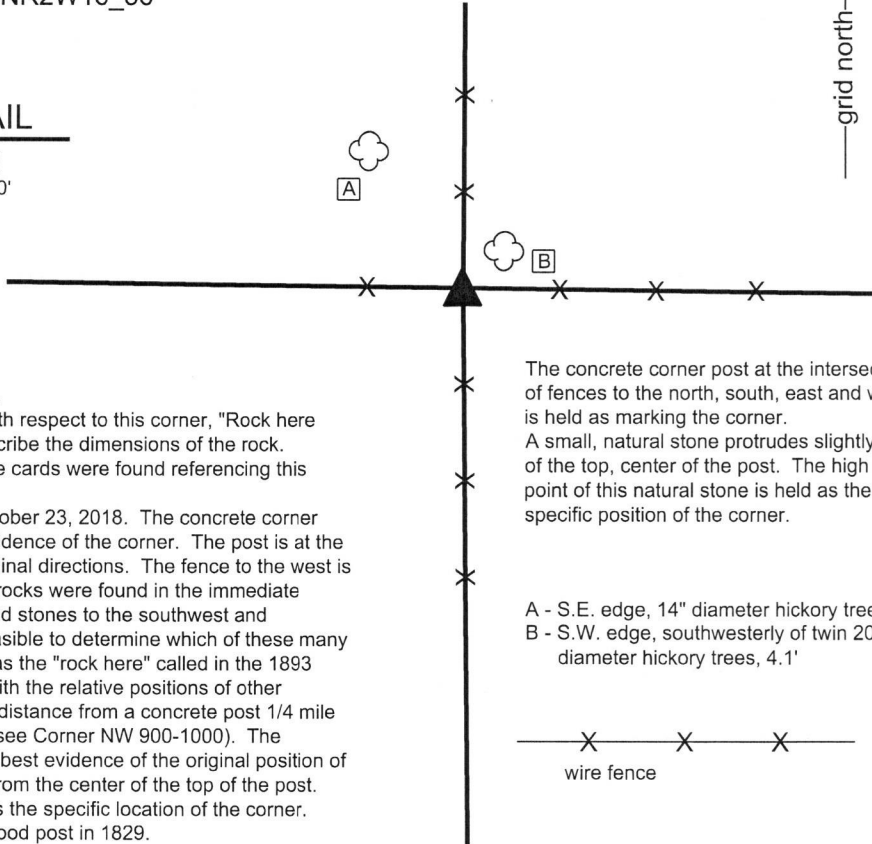
Type of monument: Concrete corner post

Indiana tie card references:
 IN02_T20NR2W17_44 IN02_T20NR2W16_36



CORNER WITNESS DETAIL

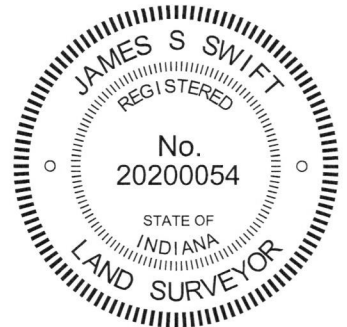
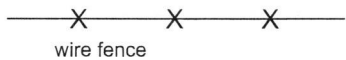
SCALE 1" = 20'
 0' 10' 20'



The concrete corner post was found in place.
 A BCS record dated April 27, 1893 states, with respect to this corner, "Rock here stump of W. Oak." The record does not describe the dimensions of the rock. No recent BCS or Clinton County Surveyor tie cards were found referencing this corner.
 This corner was investigated carefully on October 23, 2018. The concrete corner post represents substantial, readily visible evidence of the corner. The post is at the intersection of standing fences in all four cardinal directions. The fence to the west is cut-off slightly to the west of the post. Many rocks were found in the immediate vicinity of the post including a large pile of field stones to the southwest and numerous others in all directions. It is not feasible to determine which of these many rocks may have been present or referenced as the "rock here" called in the 1893 record. The position of the post works well with the relative positions of other proximate corners and is close to double the distance from a concrete post 1/4 mile south and the section corner 1/2 mile south (see Corner NW 900-1000). The concrete post was accepted as providing the best evidence of the original position of the corner. A small natural stone protrudes from the center of the top of the post. The high point of this small stone was held as the specific location of the corner. This corner was originally established as a wood post in 1829.

The concrete corner post at the intersection of fences to the north, south, east and west is held as marking the corner.
 A small, natural stone protrudes slightly out of the top, center of the post. The high point of this natural stone is held as the specific position of the corner.

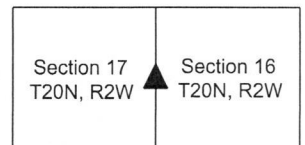
- A - S.E. edge, 14" diameter hickory tree, 15.8'
- B - S.W. edge, southwesterly of twin 20" diameter hickory trees, 4.1'



Kenneth E. Hedge
 Kenneth E. Hedge, County Surveyor

James S. Swift
 James S. Swift, IN LS 20200054
 November 14, 2018

Perry Township
 Clinton County
 Sugar Creek Twp
 Boone County



SECTION CORNER RECORD

BOONE COUNTY SURVEYOR'S OFFICE

NW 950-1050

State Plane grid coordinates NAD83 (2011):

North: 1796122.94 East: 3069162.15 (U.S. survey feet)

Type of monument: Harrison, 4" disk 'Section Corner'

Depth: One inch below adjacent road surface

Indiana tie card references:

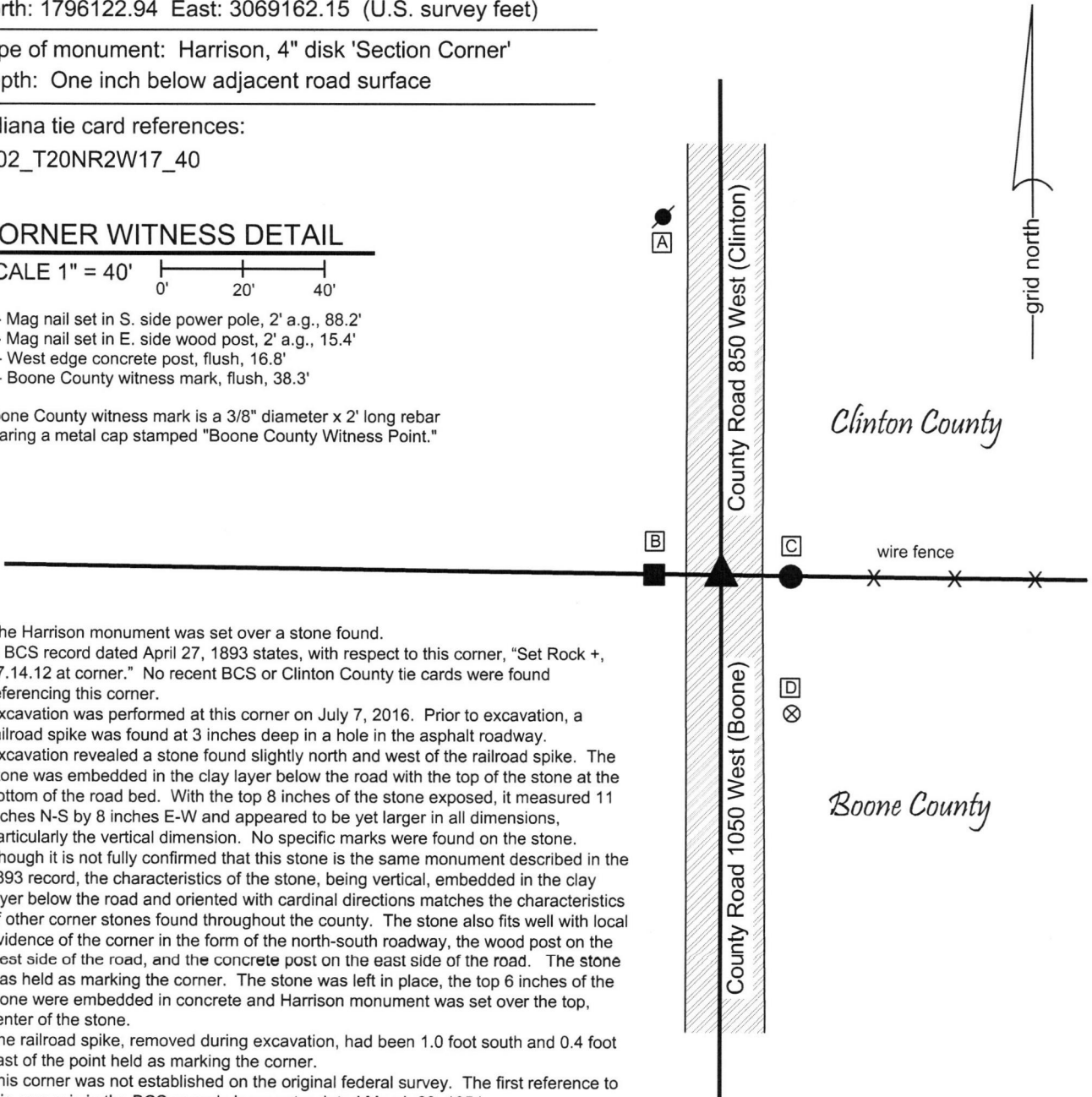
IN02_T20NR2W17_40

CORNER WITNESS DETAIL

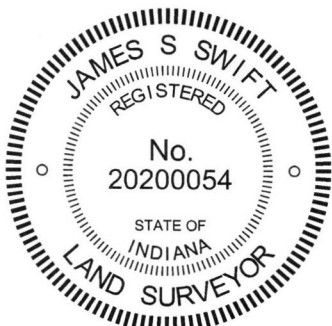
SCALE 1" = 40'

- A - Mag nail set in S. side power pole, 2' a.g., 88.2'
- B - Mag nail set in E. side wood post, 2' a.g., 15.4'
- C - West edge concrete post, flush, 16.8'
- D - Boone County witness mark, flush, 38.3'

Boone County witness mark is a 3/8" diameter x 2' long rebar bearing a metal cap stamped "Boone County Witness Point."



The Harrison monument was set over a stone found. A BCS record dated April 27, 1893 states, with respect to this corner, "Set Rock +, 17.14.12 at corner." No recent BCS or Clinton County tie cards were found referencing this corner. Excavation was performed at this corner on July 7, 2016. Prior to excavation, a railroad spike was found at 3 inches deep in a hole in the asphalt roadway. Excavation revealed a stone found slightly north and west of the railroad spike. The stone was embedded in the clay layer below the road with the top of the stone at the bottom of the road bed. With the top 8 inches of the stone exposed, it measured 11 inches N-S by 8 inches E-W and appeared to be yet larger in all dimensions, particularly the vertical dimension. No specific marks were found on the stone. Though it is not fully confirmed that this stone is the same monument described in the 1893 record, the characteristics of the stone, being vertical, embedded in the clay layer below the road and oriented with cardinal directions matches the characteristics of other corner stones found throughout the county. The stone also fits well with local evidence of the corner in the form of the north-south roadway, the wood post on the west side of the road, and the concrete post on the east side of the road. The stone was held as marking the corner. The stone was left in place, the top 6 inches of the stone were embedded in concrete and Harrison monument was set over the top, center of the stone. The railroad spike, removed during excavation, had been 1.0 foot south and 0.4 foot east of the point held as marking the corner. This corner was not established on the original federal survey. The first reference to this corner is in the BCS records is an entry dated March 29, 1854.



Kenneth E. Hedge
 Kenneth E. Hedge, County Surveyor

James S. Swift
 James S. Swift, IN LS 20200054
 March 23, 2017

Section 17
 T20N, R2W
 Perry Township
 Clinton County
 Sugar Creek Twp
 Boone County

PHOTOGRAPHIC DOCUMENTATION

Date of photography: July 7, 2016

The stone as it was originally exposed.



View from south, looking across the stone and north along Clinton County Road 850 West.



For details and documentation, refer to related sheet "Section Corner Record."

View of the stone and the wood post on the west side of the road.



View of the stone and the concrete post on the east side of the road.



SECTION CORNER RECORD

BOONE COUNTY SURVEYOR'S OFFICE

NW 950-1100

State Plane grid coordinates NAD83 (2011):
 North: 1796157.09 East: 3066512.25 (U.S. survey feet)

Type of monument: Harrison, 4" disk 'Section Corner'
 Depth: Six inches below adjacent gravel road surface

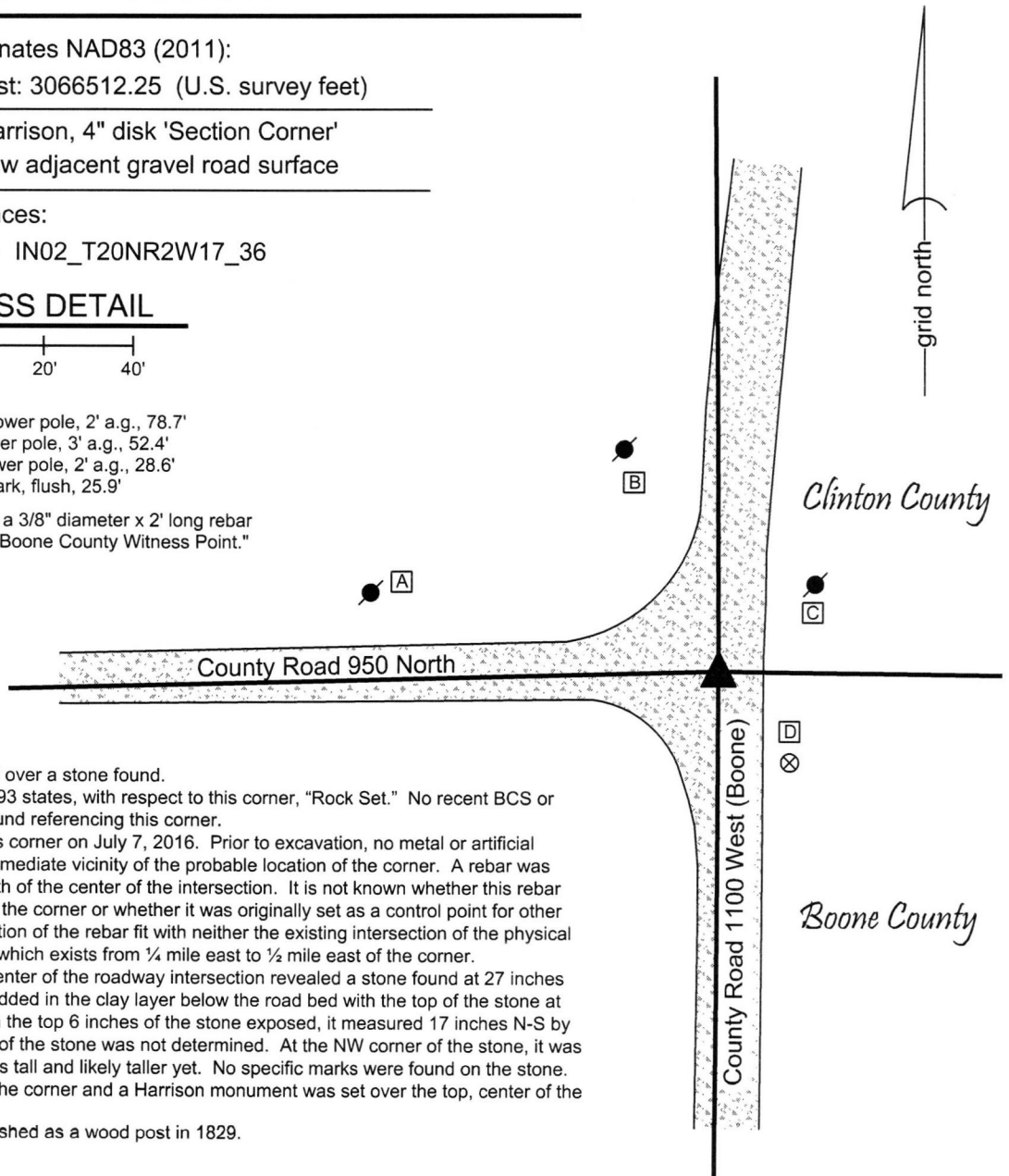
Indiana tie card references:
 IN02_T20NR2W18_44 IN02_T20NR2W17_36

CORNER WITNESS DETAIL

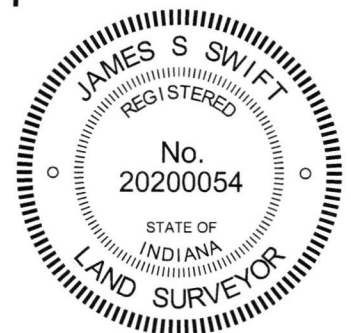
SCALE 1" = 40'

- A - Mag nail set in S.E. side power pole, 2' a.g., 78.7'
- B - Mag nail set in S. side power pole, 3' a.g., 52.4'
- C - Mag nail set in W. side power pole, 2' a.g., 28.6'
- D - Boone County witness mark, flush, 25.9'

Boone County witness mark is a 3/8" diameter x 2' long rebar bearing a metal cap stamped "Boone County Witness Point."



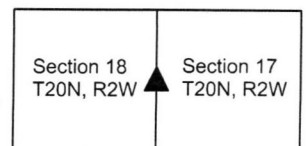
The Harrison monument was set over a stone found. A BCS record dated April 27, 1893 states, with respect to this corner, "Rock Set." No recent BCS or Clinton County tie cards were found referencing this corner. Excavation was performed at this corner on July 7, 2016. Prior to excavation, no metal or artificial monuments were found in the immediate vicinity of the probable location of the corner. A rebar was found approximately 12 feet south of the center of the intersection. It is not known whether this rebar was intended to mark or witness the corner or whether it was originally set as a control point for other surveys. It is noted that the position of the rebar fit with neither the existing intersection of the physical roadways nor the existing fence which exists from 1/4 mile east to 1/2 mile east of the corner. Excavation at the approximate center of the roadway intersection revealed a stone found at 27 inches deep. The stone was fully embedded in the clay layer below the road bed with the top of the stone at the bottom of the road bed. With the top 6 inches of the stone exposed, it measured 17 inches N-S by 16 inches E-W. The total height of the stone was not determined. At the NW corner of the stone, it was measured to be at least 12 inches tall and likely taller yet. No specific marks were found on the stone. The stone was held as marking the corner and a Harrison monument was set over the top, center of the stone. This corner was originally established as a wood post in 1829.



Kenneth E. Hedge
 Kenneth E. Hedge, County Surveyor

James S. Swift
 James S. Swift, IN LS 20200054
 March 23, 2017

Perry Township
 Clinton County
 Sugar Creek Twp
 Boone County



PHOTOGRAPHIC DOCUMENTATION

Date of photography: July 7, 2016

The stone as it was originally exposed.



The stone more fully exposed, view from above and north.



View from north, looking across the stone and south along C.R. 1100 West to the south.



View from east, looking across the stone and west along C.R. 950 North to the west.



For details and documentation, refer to related sheet "Section Corner Record."