

# SECTION CORNER RECORD

NE 300-750

## BOONE COUNTY SURVEYOR'S OFFICE

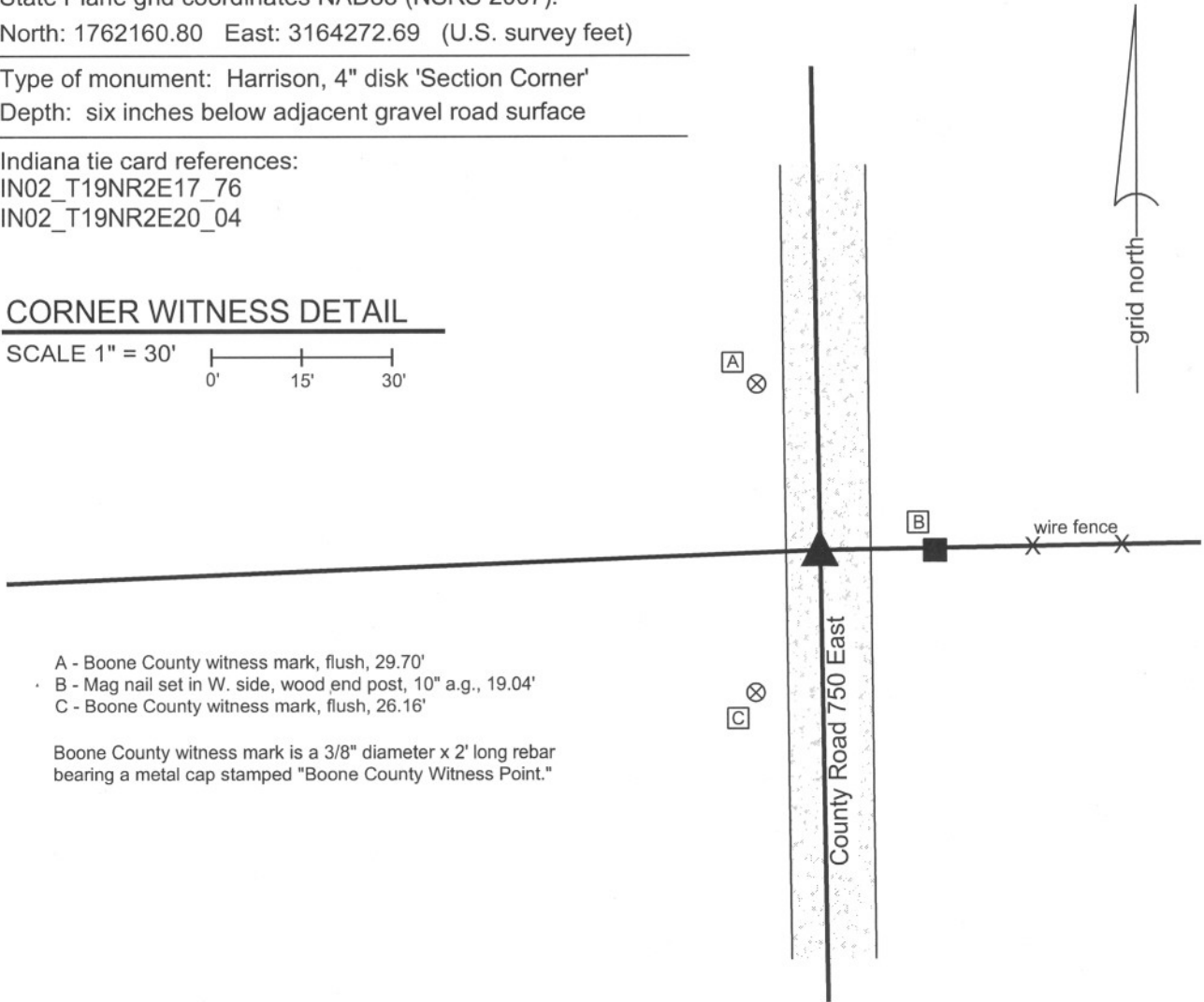
State Plane grid coordinates NAD83 (NSRS 2007):  
North: 1762160.80 East: 3164272.69 (U.S. survey feet)

Type of monument: Harrison, 4" disk 'Section Corner'  
Depth: six inches below adjacent gravel road surface

Indiana tie card references:  
IN02\_T19NR2E17\_76  
IN02\_T19NR2E20\_04

### CORNER WITNESS DETAIL

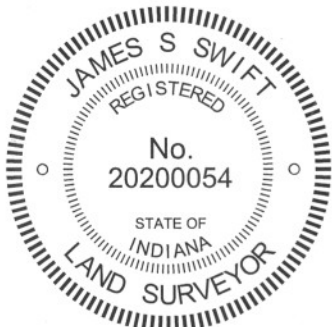
SCALE 1" = 30'  
0' 15' 30'



- A - Boone County witness mark, flush, 29.70'
- B - Mag nail set in W. side, wood end post, 10" a.g., 19.04'
- C - Boone County witness mark, flush, 26.16'

Boone County witness mark is a 3/8" diameter x 2' long rebar bearing a metal cap stamped "Boone County Witness Point."

The harrison monument was set in place of a stone found. A BCS record of May 2, 1861 states "Set a Rock 12,7, 6 in." A BCS tie card dated May 29, 1974 states "No stone found." This corner was excavated on September 2, 2010. Prior to excavation a 5/8 inch diameter rebar was found at 1 inch deep and the apparent top of a rock was found at the surface, slightly south of the rebar. Excavation revealed the rock to be the record stone from 1861, measuring 7 inches N-S by 9 inches E-W by 12 inches tall. An etched "+" was vaguely visible on the top, center of the rock but appeared to have been scraped substantially by a road grader. The rebar had been 0.8 foot north of the etched "+" on the stone. The road bed at this corner is only 3 inches of gravel above the clay layer. The stone was found at the surface of the road, hence was embedded in the clay, protruding 3 inches into the road bed, which is consistent with the depth of many other stones found from that era. The stone and rebar were removed and a harrison monument was set in place of the stone, at the position of the top, center and etched "+" on the stone. It is noted that the 5/8 inch rebar probably was not the monument set in 1974, as rebars found at other corners documented in 1974 from that year have been exclusively 1/2 inch diameter. This corner was originally established as a wood post in July, 1821.



*Kenneth E. Hedge*  
Kenneth E. Hedge, County Surveyor

*James S. Swift*  
James S. Swift, IN LS 20200054  
July 25, 2011

Marion Twp

Section 17  
T19N, R2E

Section 20  
T19N, R2E

# SECTION CORNER RECORD

## BOONE COUNTY SURVEYOR'S OFFICE

NE 300-800

State Plane grid coordinates NAD83 (CORS96):

North: 1762241.59 East: 3166932.02 (U.S. survey feet)

Type of monument: Harrison, 4" disk 'Section Corner'

Depth: six inches below adjacent gravel road surface

Indiana tie card references:

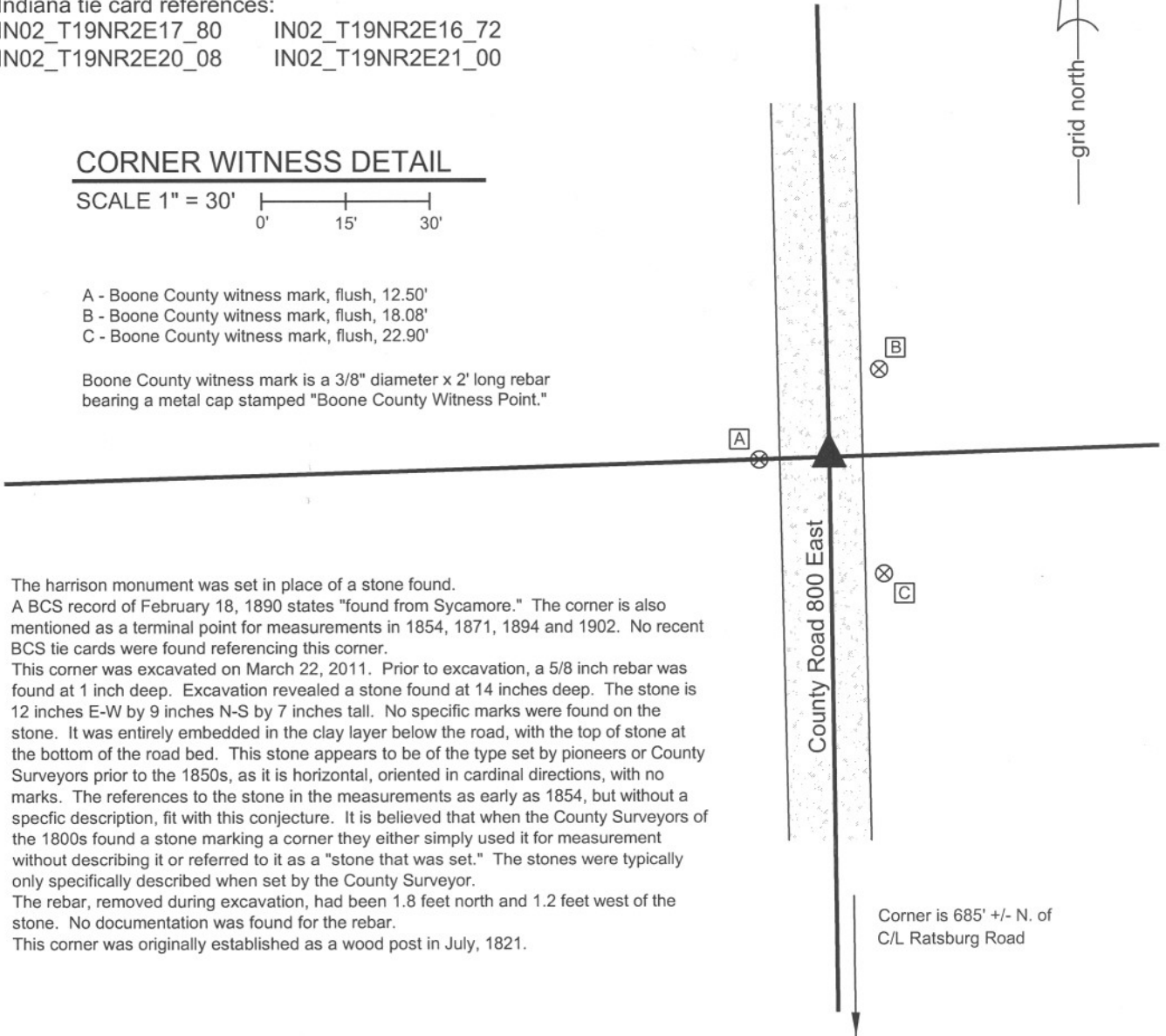
IN02\_T19NR2E17\_80      IN02\_T19NR2E16\_72  
 IN02\_T19NR2E20\_08      IN02\_T19NR2E21\_00

### CORNER WITNESS DETAIL

SCALE 1" = 30'

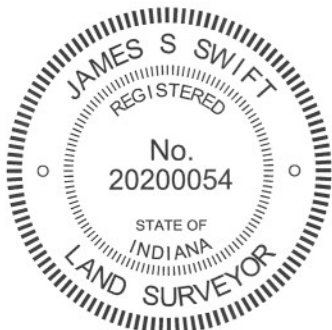
- A - Boone County witness mark, flush, 12.50'
- B - Boone County witness mark, flush, 18.08'
- C - Boone County witness mark, flush, 22.90'

Boone County witness mark is a 3/8" diameter x 2' long rebar bearing a metal cap stamped "Boone County Witness Point."



The harrison monument was set in place of a stone found. A BCS record of February 18, 1890 states "found from Sycamore." The corner is also mentioned as a terminal point for measurements in 1854, 1871, 1894 and 1902. No recent BCS tie cards were found referencing this corner. This corner was excavated on March 22, 2011. Prior to excavation, a 5/8 inch rebar was found at 1 inch deep. Excavation revealed a stone found at 14 inches deep. The stone is 12 inches E-W by 9 inches N-S by 7 inches tall. No specific marks were found on the stone. It was entirely embedded in the clay layer below the road, with the top of stone at the bottom of the road bed. This stone appears to be of the type set by pioneers or County Surveyors prior to the 1850s, as it is horizontal, oriented in cardinal directions, with no marks. The references to the stone in the measurements as early as 1854, but without a specific description, fit with this conjecture. It is believed that when the County Surveyors of the 1800s found a stone marking a corner they either simply used it for measurement without describing it or referred to it as a "stone that was set." The stones were typically only specifically described when set by the County Surveyor. The rebar, removed during excavation, had been 1.8 feet north and 1.2 feet west of the stone. No documentation was found for the rebar. This corner was originally established as a wood post in July, 1821.

Corner is 685' +/- N. of  
 C/L Ratsburg Road



*Kenneth E. Hedge*  
 Kenneth E. Hedge, County Surveyor

*James S. Swift*  
 James S. Swift, IN LS 20200054  
 March 1, 2012

Marion Township

Section 17 T19N, R2E	Section 16 T19N, R2E
Section 20 T19N, R2E	Section 21 T19N, R2E

PHOTOGRAPHIC DOCUMENTATION

Date of photography: March 22, 2011

View of the stone as first exposed.



The stone removed from the road bed. The scratch mark visible on top of the stone was made by the excavator at the time of excavation.



View from the north, looking across the stone and south along County Road 800 East.



For details and documentation, refer to related sheet "Section Corner Record."

# SECTION CORNER RECORD

## BOONE COUNTY SURVEYOR'S OFFICE

NE 350-700

State Plane grid coordinates NAD83 (CORS96):

North: 1764732.19 East: 3161601.08 (U.S. survey feet)

Type of monument: Harrison, 4" disk 'Section Corner'

Depth: six inches below adjacent gravel road surface

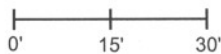
Indiana tie card references:

IN02\_T19NR2E17\_36

IN02\_T19NR2E18\_44

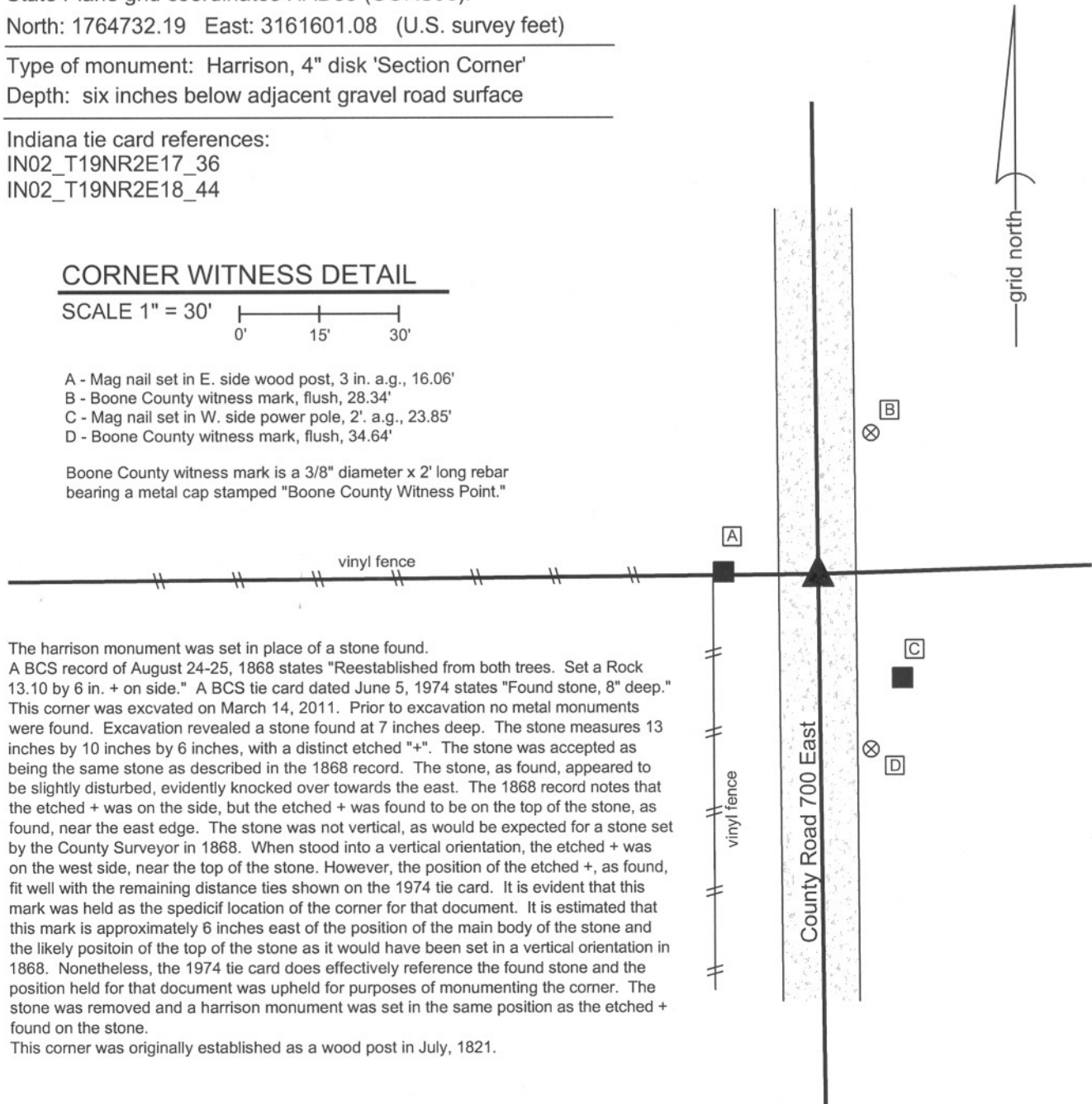
### CORNER WITNESS DETAIL

SCALE 1" = 30'



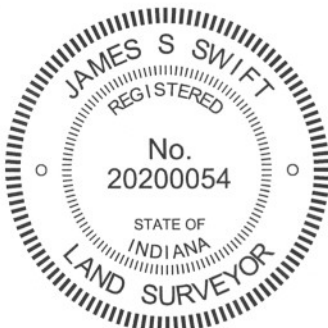
- A - Mag nail set in E. side wood post, 3 in. a.g., 16.06'
- B - Boone County witness mark, flush, 28.34'
- C - Mag nail set in W. side power pole, 2'. a.g., 23.85'
- D - Boone County witness mark, flush, 34.64'

Boone County witness mark is a 3/8" diameter x 2' long rebar bearing a metal cap stamped "Boone County Witness Point."



The harrison monument was set in place of a stone found. A BCS record of August 24-25, 1868 states "Reestablished from both trees. Set a Rock 13.10 by 6 in. + on side." A BCS tie card dated June 5, 1974 states "Found stone, 8" deep." This corner was excavated on March 14, 2011. Prior to excavation no metal monuments were found. Excavation revealed a stone found at 7 inches deep. The stone measures 13 inches by 10 inches by 6 inches, with a distinct etched "+". The stone was accepted as being the same stone as described in the 1868 record. The stone, as found, appeared to be slightly disturbed, evidently knocked over towards the east. The 1868 record notes that the etched + was on the side, but the etched + was found to be on the top of the stone, as found, near the east edge. The stone was not vertical, as would be expected for a stone set by the County Surveyor in 1868. When stood into a vertical orientation, the etched + was on the west side, near the top of the stone. However, the position of the etched +, as found, fit well with the remaining distance ties shown on the 1974 tie card. It is evident that this mark was held as the specific location of the corner for that document. It is estimated that this mark is approximately 6 inches east of the position of the main body of the stone and the likely position of the top of the stone as it would have been set in a vertical orientation in 1868. Nonetheless, the 1974 tie card does effectively reference the found stone and the position held for that document was upheld for purposes of monumenting the corner. The stone was removed and a harrison monument was set in the same position as the etched + found on the stone.

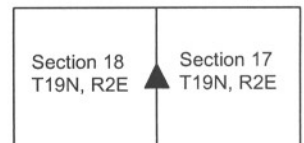
This corner was originally established as a wood post in July, 1821.



*Kenneth E. Hedge*  
 Kenneth E. Hedge, County Surveyor

*James S. Swift*  
 James S. Swift, IN LS 20200054  
 March 1, 2012

Marion Township



PHOTOGRAPHIC DOCUMENTATION

Date of photography: March 14, 2011

View of the stone as first exposed.



View of the stone fully exposed but not moved.



View from the south looking across the stone and north along County Road 700 East.



View from the east showing the stone and the post on the west side of the road.



For details and documentation, refer to related sheet "Section Corner Record."

# SECTION CORNER RECORD

# NE 350-800

## BOONE COUNTY SURVEYOR'S OFFICE

State Plane grid coordinates NAD83 (2011):

North: 1764879.12 East: 3166870.28 (U.S. survey feet)

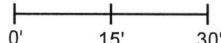
Type of monument: Harrison, 4" disk 'Section Corner'

Depth: Six inches below adjacent gravel road surface

Indiana tie card references:

IN02\_T19NR2E16\_36 IN02\_T19NR2E17\_44

### CORNER WITNESS DETAIL

SCALE 1" = 30' 

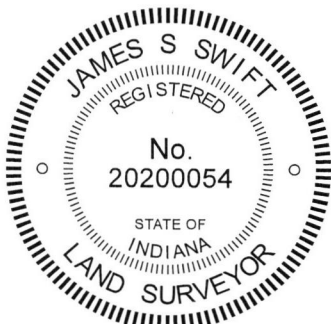
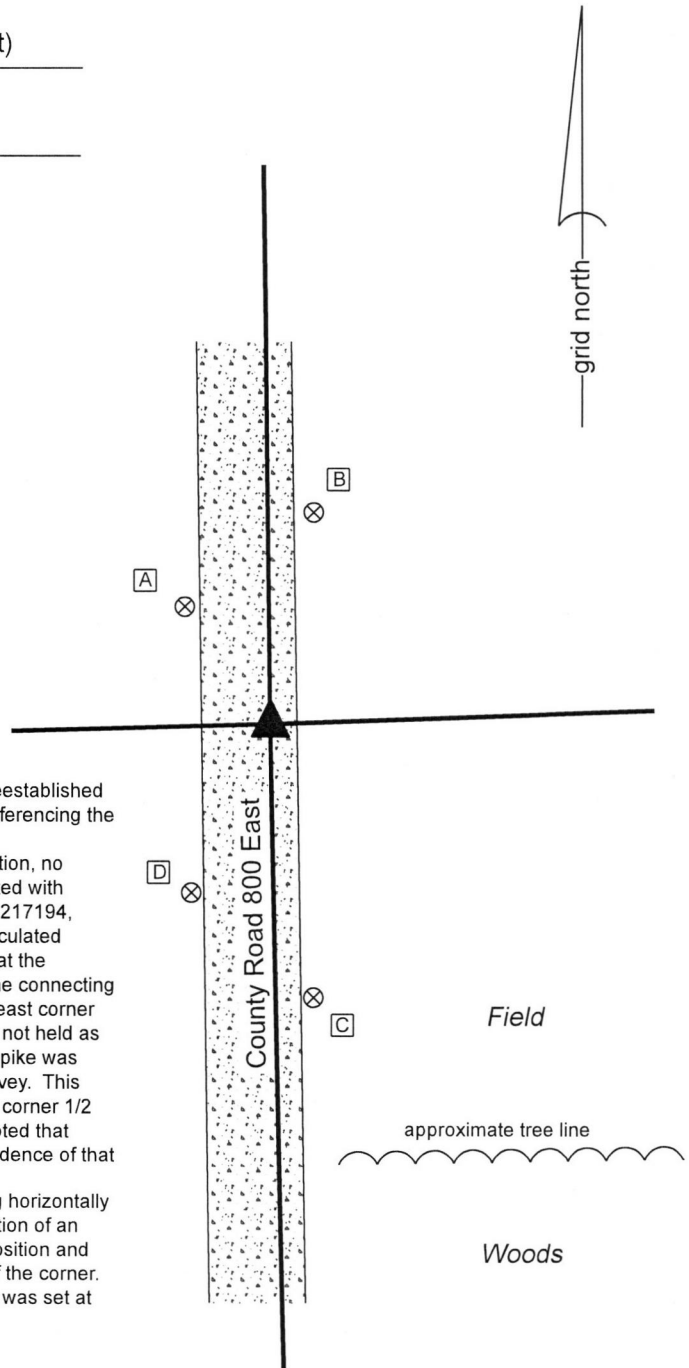
- A - Boone County witness mark, flush, 22.6'
- B - Boone County witness mark, flush, 33.6'
- C - Boone County witness mark, flush, 43.1'
- D - Boone County witness mark, flush, 28.9'

The Harrison monument was set at a calculated position. A BCS record of February 15, 1871 states, with respect to this corner, "Reestablished from stump of Elm. Drove stake." No recent BCS tie cards were found referencing the corner.


Excavation was performed at this corner on April 9, 2018. Prior to excavation, no metal monuments were found. A position for the corner had been calculated with respect to a survey by Jerry L. Carter, LS S0350 recorded as document 0217194, November 26, 2002, in the Office of the Boone County Recorder. The calculated position was specifically established at 988.69 feet north of a rebar found at the northeast corner of a 5.5588 acre parcel on the northerly extension of a line connecting that rebar with a railroad spike shown on the survey as marking the southeast corner of the southeast quarter of section 17. It is noted that the railroad spike is not held as the corner by this office (See Corner NE-300-800) but the position of the spike was held for purposes of reconstructing the lines and corners of the Carter survey. This calculated position works reasonably well with the relative positions of the corner 1/2 mile north (see corner NE-400-800) and the corner 1/4 mile north. It is noted that previous excavation at the corner 1/4 mile north revealed no additional evidence of that corner.

During excavation, a 14 inch long section of 5/8 inch rebar was found lying horizontally near the corner, evidently previously displaced by a road grader. Excavation of an area extending approximately 4 feet in all directions from the calculated position and well into the clay layer below the road bed revealed no further evidence of the corner. The calculated position for the corner was held and a Harrison monument was set at this position.

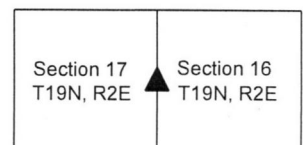
This corner was originally established as a wood post in 1821.



  
 Kenneth E. Hedge, County Surveyor

  
 James S. Swift, IN LS 20200054  
 May 23, 2018

Marion Township



# SECTION CORNER RECORD

NE 400-700

## BOONE COUNTY SURVEYOR'S OFFICE

State Plane grid coordinates NAD83 (NSRS 2007):  
 North: 1767379.15 East: 3161576.80 (U.S. survey feet)

Type of monument: Harrison, 4" disk 'Section Corner'  
 Depth: Six inches below the surface of the gravel road.

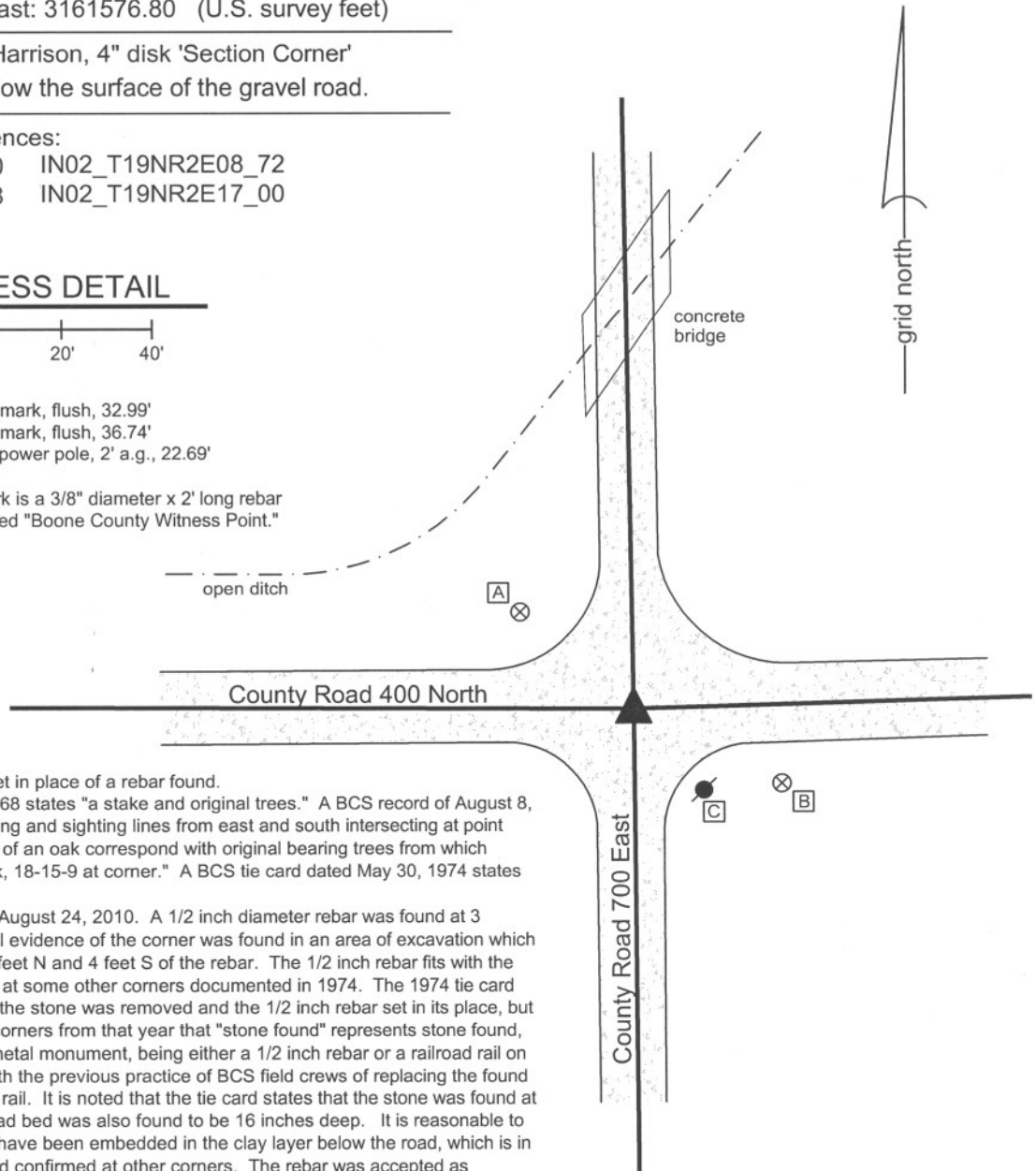
Indiana tie card references:  
 IN02\_T19NR2E07\_80 IN02\_T19NR2E08\_72  
 IN02\_T19NR2E18\_08 IN02\_T19NR2E17\_00

### CORNER WITNESS DETAIL

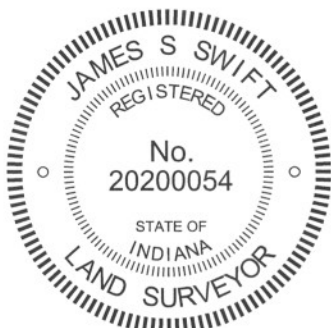
SCALE 1" = 40'

- A - Boone County witness mark, flush, 32.99'
- B - Boone County witness mark, flush, 36.74'
- C - Mag nail set in N. side power pole, 2' a.g., 22.69'

Boone County witness mark is a 3/8" diameter x 2' long rebar bearing a metal cap stamped "Boone County Witness Point."



The harrison monument was set in place of a rebar found. A BCS record of August 27, 1868 states "a stake and original trees." A BCS record of August 8, 1912 states "Found by measuring and sighting lines from east and south intersecting at point where an Elm stump and roots of an oak correspond with original bearing trees from which re-established corner. Set rock, 18-15-9 at corner." A BCS tie card dated May 30, 1974 states "Stone found, 16" deep." This corner was excavated on August 24, 2010. A 1/2 inch diameter rebar was found at 3 inches deep. No other physical evidence of the corner was found in an area of excavation which extended 6 feet W, 4 feet E, 4 feet N and 4 feet S of the rebar. The 1/2 inch rebar fits with the character of monuments found at some other corners documented in 1974. The 1974 tie card does not specifically state that the stone was removed and the 1/2 inch rebar set in its place, but it has been observed at other corners from that year that "stone found" represents stone found, removed and replaced with a metal monument, being either a 1/2 inch rebar or a railroad rail on end. This is also in keeping with the previous practice of BCS field crews of replacing the found stone with a section of railroad rail. It is noted that the tie card states that the stone was found at 16 inches deep and that the road bed was also found to be 16 inches deep. It is reasonable to conclude that the stone would have been embedded in the clay layer below the road, which is in character with stones found and confirmed at other corners. The rebar was accepted as providing the best available evidence of the stone found in 1974 and held as marking the corner. The harrison monument was set in place of the found rebar. This corner was originally established as a wood post in July, 1821.



*Kenneth E. Hedge*  
 Kenneth E. Hedge, County Surveyor

*James S. Swift*  
 James S. Swift, IN LS 20200054  
 July 25, 2011

Marion Township

Section 7 T19N, R2E	Section 8 T19N, R2E
Section 18 T19N, R2E	Section 17 T19N, R2E

# SECTION CORNER RECORD

# NE 400-750

## BOONE COUNTY SURVEYOR'S OFFICE

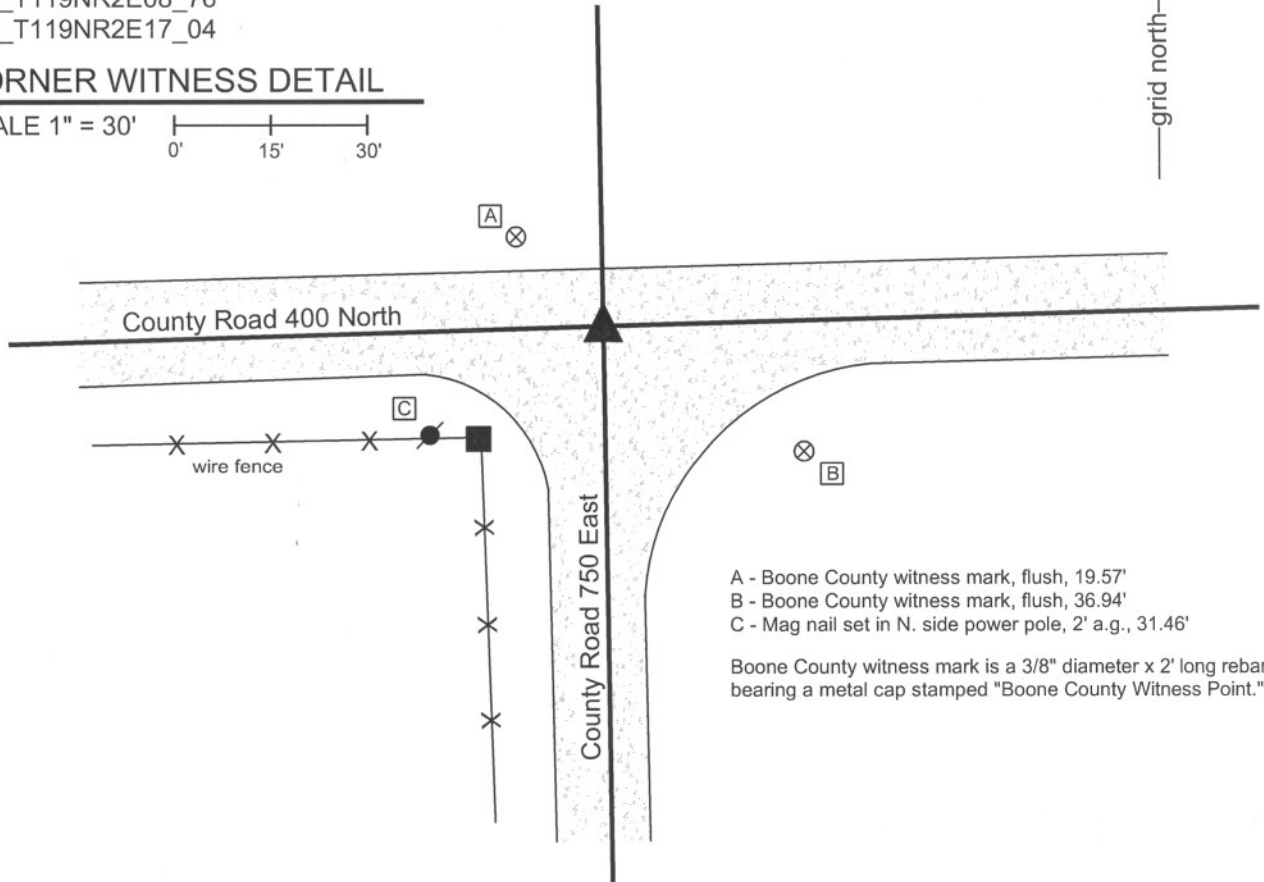
State Plane grid coordinates NAD83 (NSRS 2007):  
North: 1767454.46 East: 3164192.81 (U.S. survey feet)

Type of monument: Harrison, 4" disk 'Section Corner'  
Depth: One inch below adjacent road surface

Indiana tie card references:  
IN02\_T119NR2E08\_76  
IN02\_T119NR2E17\_04

### CORNER WITNESS DETAIL

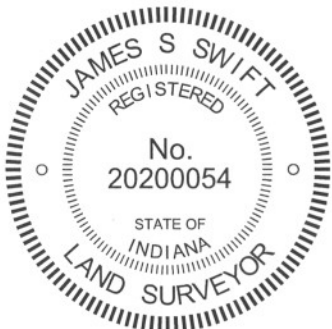
SCALE 1" = 30'  
0' 15' 30'



- A - Boone County witness mark, flush, 19.57'
- B - Boone County witness mark, flush, 36.94'
- C - Mag nail set in N. side power pole, 2' a.g., 31.46'

Boone County witness mark is a 3/8" diameter x 2' long rebar bearing a metal cap stamped "Boone County Witness Point."

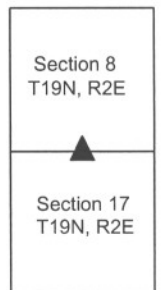
The Harrison monument was set over a stone found. A BCS record of June 17, 1873 states "Reestablished from trees. Set a Rock 13,9,4 +." A BCS record of August 8, 1912 states "Found rock at corner, also stump of oak." A BCS record of September 23, 1921 states "Set Rock 24x16x8 +." A BCS tie card dated May 22, 1974 states "No stone." This corner was excavated on August 31, 2010. A 1/2 inch rebar was found at 3 inches deep in the gravel road. This monument is similar in character to monuments found at some other corners documented in 1974. The stone described in the 1921 record was found at 16 inches deep, northeast of the rebar. The stone is fully embedded in the clay layer below the road with the top of the stone at the bottom of the road bed. The stone has a clearly visible etched "+" at the top, high point. With 18 inches of the stone exposed on the south side, the stone measures 15 inches N-S by 8 inches E-W. The Harrison monument was set directly over the etched "+" on the stone and the top 4 inches of the stone were encased in concrete along with the Harrison. The 1974 reference to "no stone" indicates that a stone was searched for but found. It is most likely that the 1/2 inch rebar was set at that time, after the erroneous determination that other evidence, in the form of a stone, was not present. The rebar had been 0.8' south and 1.0' west of the found stone. This corner was originally established as a wood post in July, 1821.



*Kenneth E. Hedge*  
Kenneth E. Hedge, County Surveyor

*James S. Swift*  
James S. Swift, IN LS 20200054  
July 25, 2011

Marion Twp





PHOTOGRAPHIC DOCUMENTATION

Date of photography: August 31, 2010

View from the east looking across the stone and west along County road 400 North.



View of the stone as first exposed.



The stone from above and east.



Similar view to above, in full sun.



For details and documentation, refer to related sheet "Section Corner Record."

# SECTION CORNER RECORD

NE 400-800

## BOONE COUNTY SURVEYOR'S OFFICE

State Plane grid coordinates NAD83 (NSRS 2007):

North: 1767525.47 East: 3166835.76 (U.S. survey feet)

Type of monument: Harrison, 4" disk 'Section Corner'

Depth: Six inches below the gravel road surface.

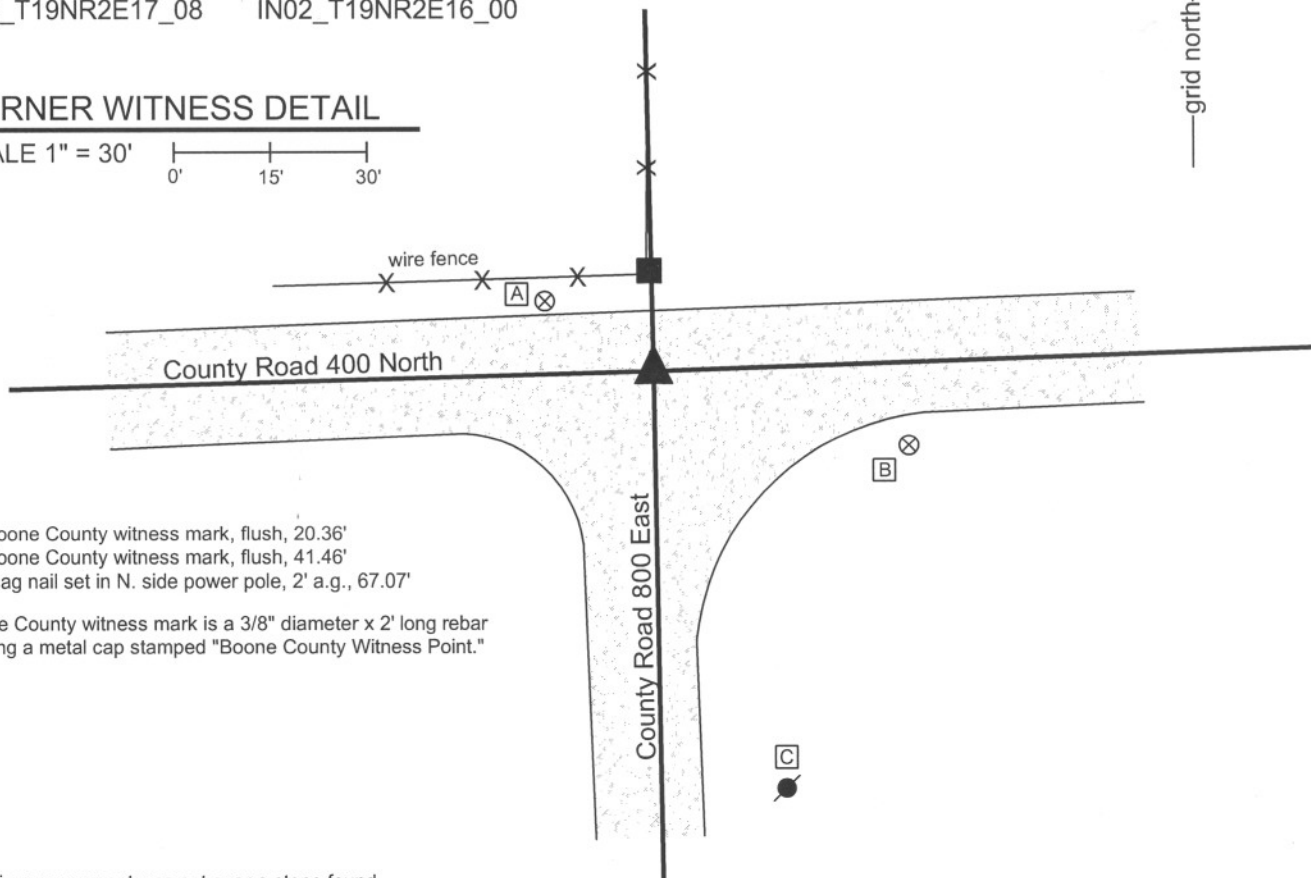
Indiana tie card references:

IN02\_T19NR2E08\_80 IN02\_T19NR2E09\_72

IN02\_T19NR2E17\_08 IN02\_T19NR2E16\_00

### CORNER WITNESS DETAIL

SCALE 1" = 30'



- A - Boone County witness mark, flush, 20.36'
- B - Boone County witness mark, flush, 41.46'
- C - Mag nail set in N. side power pole, 2' a.g., 67.07'

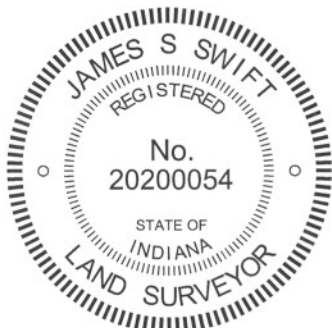
Boone County witness mark is a 3/8" diameter x 2' long rebar bearing a metal cap stamped "Boone County Witness Point."

The harrison monument was set over a stone found.

A BCS record of June 17, 1873 states "Reestablished. Set two Rocks one 13.8 by 6 in + under one is 7.5.4 +." A BCS tie card dated October 21, 1971 states "found stone, set rail." A BCS tie card dated May 30, 1975 states "Stone found w/ Rail at angle."

This corner was excavated on August 24, 2010. A section of railroad rail was found leaning substantially towards the south. Excavation revealed that the rail was suspended over a stone, with the bottom of the rail to the north of the stone and the top of the rail to the south of the stone. The stone is the record lower stone from 1873, measuring 7 inches N-S by 5 inches E-W by 4 inches tall. An etched "+" was clearly visible on the top, center of the stone. The stone is 30 inches deep. The bottom of the road bed in this immediate vicinity is at 18 to 20 inches deep. Hence the record top stone, at 13 inches tall, would have protruded 1 to 3 inches out of the clay layer below the road into the bottom of the road bed, which is in character with many other stones found from that era. The stone was left in place and the harrison monument was set over the etched "+" on the top of the stone. The rail was removed during excavation.

This corner was originally established as a wood post in July, 1921.



*Kenneth E. Hedge*  
 Kenneth E. Hedge, County Surveyor

*James S. Swift*  
 James S. Swift, IN LS 20200054  
 July 25, 2011

Marion Township

Section 8 T19N, R2E	Section 9 T19N, R2E
Section 17 T19N, R2E	Section 16 T19N, R2E

PHOTOGRAPHIC DOCUMENTATION

Date of photography: August 24, 2010

The top of the railroad rail, as found.



View of the stone as first exposed.



View of the stone from above and south.



The stone from above, showing the etched mark.



For details and documentation, refer to related sheet "Section Corner Record."