

SECTION CORNER RECORD

NW 900-900

BOONE COUNTY SURVEYOR'S OFFICE

State Plane grid coordinates NAD83 (2011):
North: 1793352.60 East: 3077140.94 (U.S. survey feet)

Type of monument: Harrison, 4" disk 'Section Corner'
Depth: Six inches below adjacent gravel road surface

Indiana tie card references:

IN02_T20NR2W16_80 IN02_T20NR2W15_72
IN02_T20NR2W21_08 IN02_T20NR2W22_00

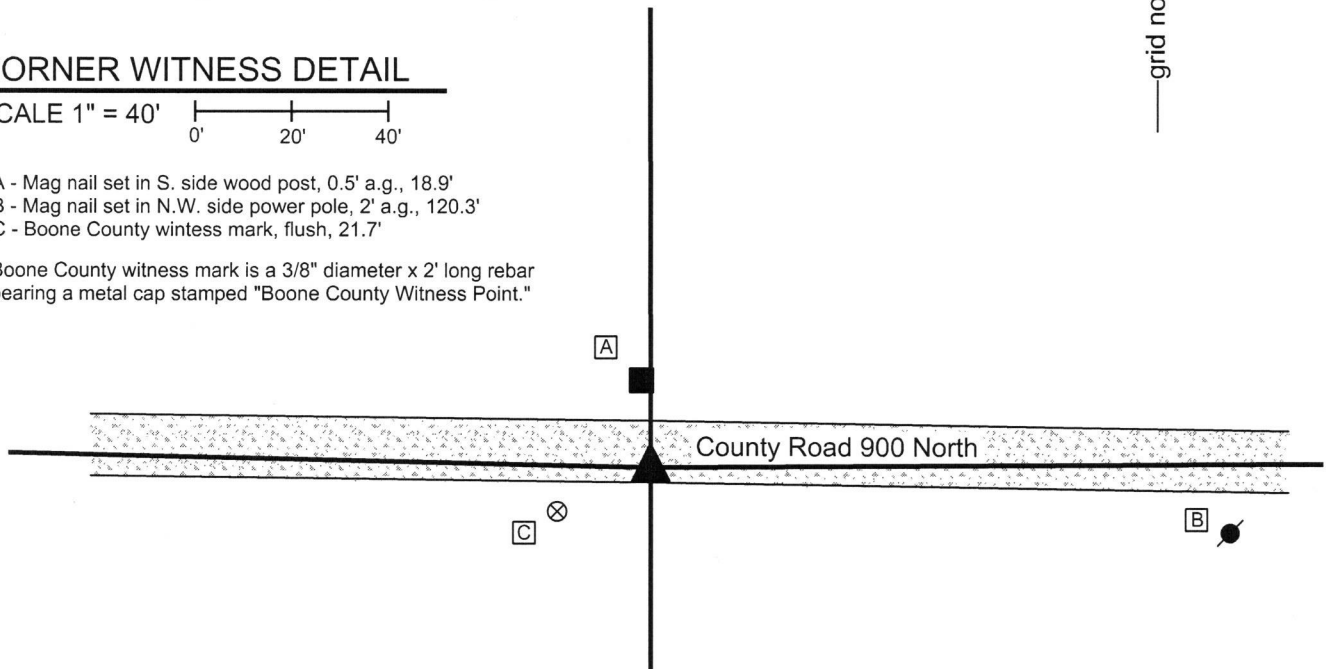


CORNER WITNESS DETAIL

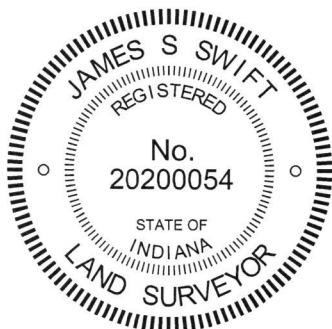
SCALE 1" = 40'
0' 20' 40'

- A - Mag nail set in S. side wood post, 0.5' a.g., 18.9'
- B - Mag nail set in N.W. side power pole, 2' a.g., 120.3'
- C - Boone County witness mark, flush, 21.7'

Boone County witness mark is a 3/8" diameter x 2' long rebar bearing a metal cap stamped "Boone County Witness Point."



The Harrison monument was set over a stone found.
 A BCS record dated March 29-31, 1858 references this corner as a Rock 12, 16, noting that the corner was "Reestablished from old Wit tree." No recent BCS tie cards were found referencing this corner.
 Excavation was performed at this corner on June 24, 2016. Prior to excavation, a 5/8 inch diameter rebar was found at 1 inch deep in the gravel road, slightly bent at the top. Excavation revealed the rock described in the 1858 record at 13 inches deep.
 With the top 6 inches of the stone exposed, it measured 12 inches NW-SE and 15 inches NE-SW, and appeared substantially larger in the vertical dimension. The stone was embedded in the clay layer below the road, protruding slightly into the bottom of the road bed. The top of the stone, as found, was not oriented in cardinal directions. It is noted that the adjacent corner 1/2 mile to the east, set during the same survey, was also not oriented in cardinal directions. No distinct marks were found on the stone nor does it have a distinct high point. The two dimensions measured on the stone match closely with the 1858 record and the stone was held as marking the corner. The center of the top of the stone was held as the specific position of the corner and a Harrison monument was set over this point. The top of the stone was embedded in concrete.
 The rebar found prior to excavation and removed during excavation had been 0.5 foot north and 2.2 feet west of the top, center of the stone.
 This corner was originally established as a wood post in 1829.



Kenneth E. Hedge
Kenneth E. Hedge, County Surveyor

James S. Swift
James S. Swift, IN LS 20200054
March 23, 2017

Sugar Creek Township

Section 16 T20N, R2W	Section 15 T20N, R2W
Section 21 T20N, R2W	Section 22 T20N, R2W

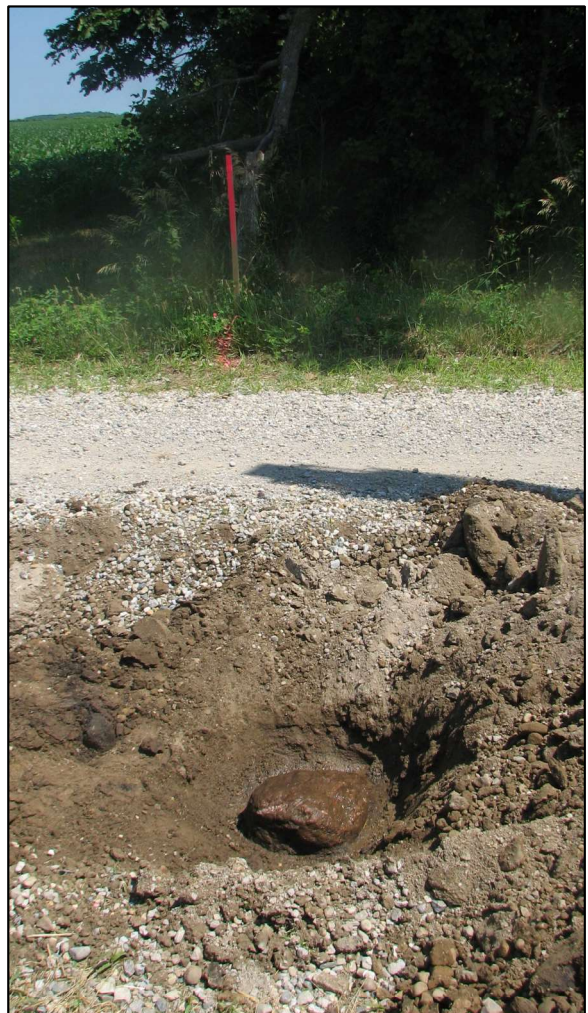
PHOTOGRAPHIC DOCUMENTATION

Date of photography: June 24, 2016

The stone as it was originally exposed.



View looking across the stone to the post on the north side of County Road 900 North.



The stone from above, washed.



For details and documentation, refer to related sheet "Section Corner Record."

SECTION CORNER RECORD

NW 900-950

BOONE COUNTY SURVEYOR'S OFFICE

State Plane grid coordinates NAD83 (2011):

North: 1793412.78 East: 3074466.62 (U.S. survey feet)

Type of monument: Harrison, 4" disk 'Section Corner'

Depth: Six inches below adjacent gravel road surface

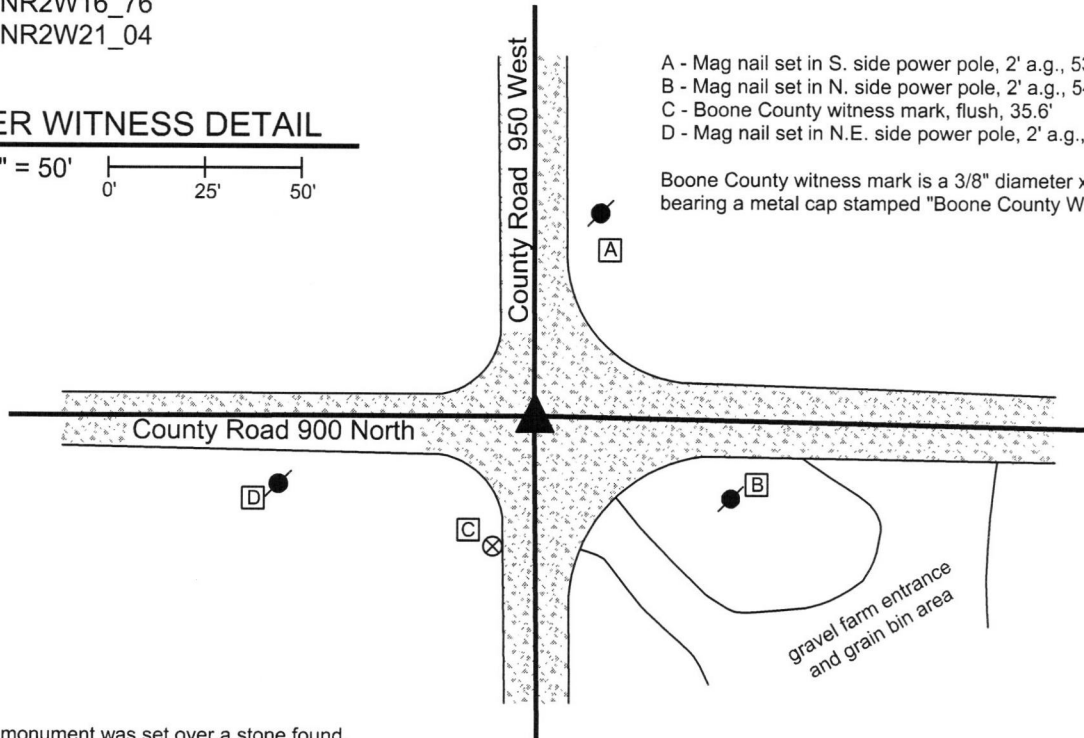
Indiana tie card references:

IN02_T20NR2W16_76

IN02_T20NR2W21_04

CORNER WITNESS DETAIL

SCALE 1" = 50'



- A - Mag nail set in S. side power pole, 2' a.g., 53.2'
- B - Mag nail set in N. side power pole, 2' a.g., 54.6'
- C - Boone County witness mark, flush, 35.6'
- D - Mag nail set in N.E. side power pole, 2' a.g., 67.1'

Boone County witness mark is a 3/8" diameter x 2' long rebar bearing a metal cap stamped "Boone County Witness Point."



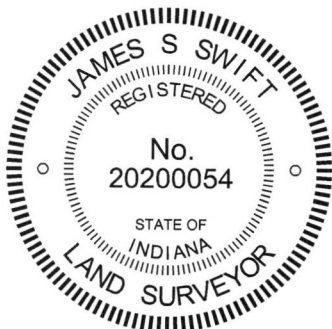
The Harrison monument was set over a stone found.

A BCS record dated March 29-31, 1858 references this corner as a Rock 14x24, noting that the corner was "Reestablished from old wit tree Beech." No recent BCS tie cards were found referencing this corner.

Excavation was performed at this corner on June 23, 2016. Prior to excavation, a 5/8 inch diameter rebar was found at 2 inches deep in the gravel road. Excavation revealed a stone found at 6 inches deep, south and west of the rebar. This stone was found to be 10 inches tall by 8 inches N-S by 6 inches E-W. The stone was vertical but only slightly embedded in the clay layer below the road. Most of the stone was situated within the fill material of the road. This stone was not held as marking the corner. Further excavation revealed another stone found at 21 inches deep, north and slightly east of the rebar. This stone was fully embedded in the clay layer below the road with the top of the stone being coincident with the bottom of the road bed. The stone was not oriented in cardinal directions. With the top 8 inches of the stone exposed, it measured 8 inches NW-SE by 14 inches NE-SW and was clearly much larger in the vertical dimension. It is noted that the stone found at the adjoining corner 1/2 mile to the east, set as part of the same 1858 survey, was also not oriented in cardinal directions. Although the stone, as measured, matched only one of the two dimensions, it is expected that the second dimension is the vertical dimension. The characteristics of the stone, being vertical and embedded in the clay layer below the road, match those of many other corner stones found throughout the county. The orientation off cardinal directions also matches the characteristics of the stone found at the corner to the east, as noted above. The stone was held as marking the corner and a Harrison monument was set directly over the top of the stone.

The rebar, removed during excavation, had been situated along the southwestern edge of the stone, specifically 0.6 foot south and 0.2 foot west of the center of the rock and point held as the corner.

This corner was originally established as a wood post in 1829.



Kenneth E. Hedge

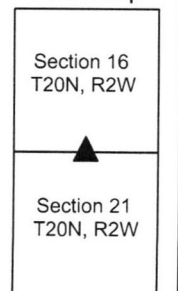
 Kenneth E. Hedge, County Surveyor

James S. Swift

 James S. Swift, IN LS 20200054

March 23, 2017

Sugar Creek Township



PHOTOGRAPHIC DOCUMENTATION

Date of photography: June 23, 2016

View from the east looking across the stone and west along County Road 900 North.



The first stone found (not held) and the rebar.



The corner stone as it was originally exposed.



The corner stone more fully originally exposed.



For details and documentation, refer to related sheet "Section Corner Record."

SECTION CORNER RECORD

NW 900-1000

BOONE COUNTY SURVEYOR'S OFFICE

State Plane grid coordinates NAD83 (2011):

North: 1793409.26 East: 3071827.77 (U.S. survey feet)

Type of monument: Harrison, 4" disk 'Section Corner'

Depth: Four inches below adjacent gravel road surface

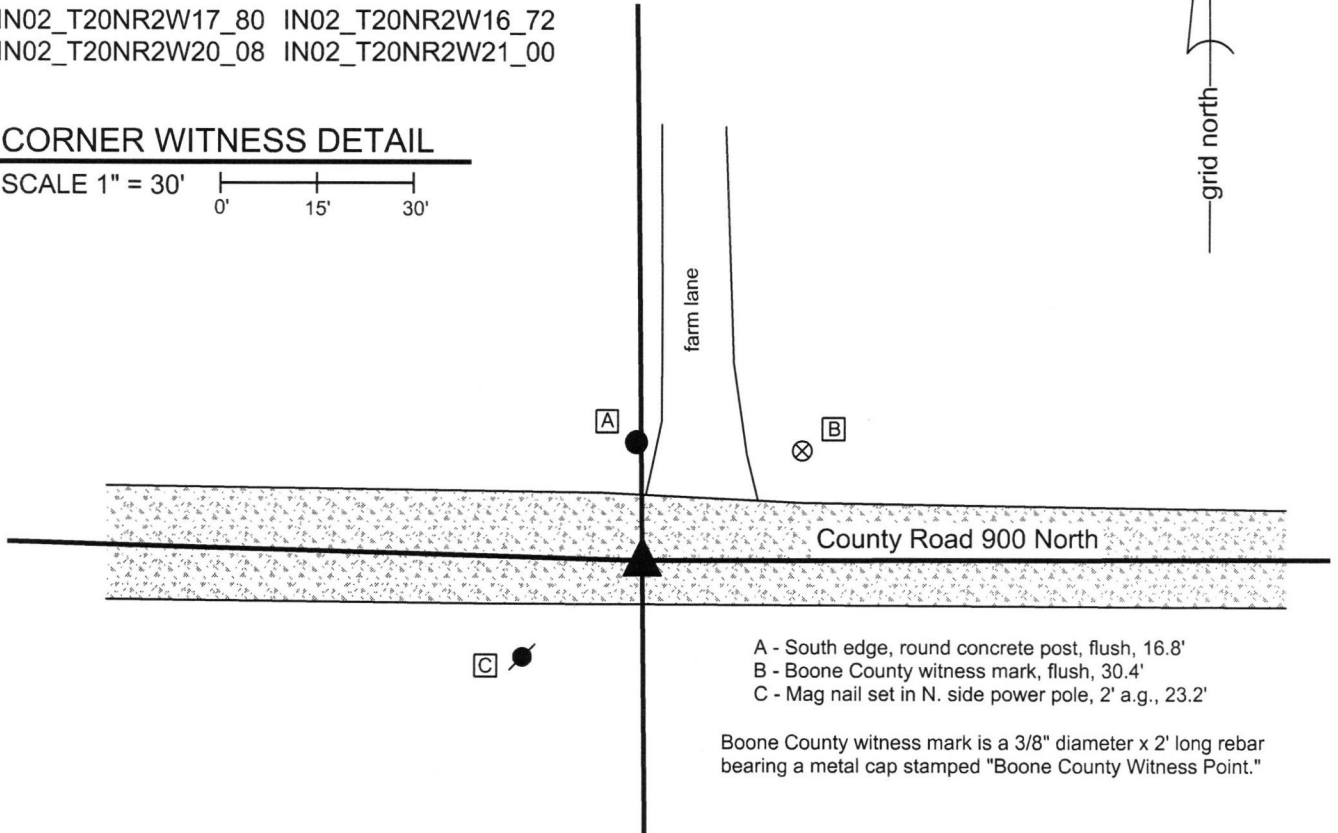
Indiana tie card references:

IN02_T20NR2W17_80 IN02_T20NR2W16_72

IN02_T20NR2W20_08 IN02_T20NR2W21_00

CORNER WITNESS DETAIL

SCALE 1" = 30'
0' 15' 30'



A - South edge, round concrete post, flush, 16.8'

B - Boone County witness mark, flush, 30.4'

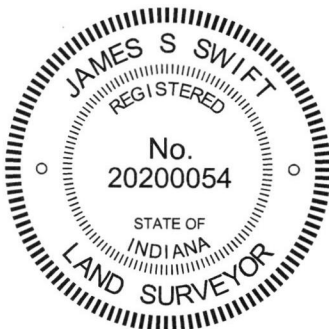
C - Mag nail set in N. side power pole, 2' a.g., 23.2'

Boone County witness mark is a 3/8" diameter x 2' long rebar bearing a metal cap stamped "Boone County Witness Point."

The Harrison monument was set over a stone found.

No specific descriptions of this corner were found in the BCS Surveyor's Record, though the corner is referenced as the terminal point for measurements of 1839, 1858, and 1877, indicating that on those occasions some monument was present from which to measure. No recent BCS tie cards were found referencing this corner.

Excavation was performed at this corner on June 24, 2016. Prior to excavation no metal or other artificial monuments were found prior to excavation. Substantial local evidence of the corner was found in the form of the east-west county road and a concrete post on the north side of the road, in-line with a field division and edge of farm lane to the north. It is noted that this position fit well with respect to relative positions of evidence found which indicates the respective locations of the corners one-half and one-quarter mile in both the east and west directions. Excavation at the probable position, based on the found evidence, revealed a stone found at 14 inches deep in the gravel road. With the top 9 inches of the stone exposed, it measured 9 inches E-W by 10 inches N-S and was clearly larger, particularly in the vertical dimension. The stone was fully embedded in the clay layer below the road with the top of the stone at the bottom of the road bed. The north side of the stone was flat and vertical with the high point of the stone being at the north edge of the top. No specific marks were found on the stone. The stone was held as marking the corner. The top 9 inches of the stone were embedded in concrete and a Harrison monument was set directly over the top, high point, near the north edge of the stone. This corner was originally established as a wood post in 1829.



Kenneth E. Hedge
Kenneth E. Hedge, County Surveyor

James S. Swift
James S. Swift, IN LS 20200054
March 23, 2017

Sugar Creek Township

Section 17 T20N, R2W	Section 16 T20N, R2W
Section 20 T20N, R2W	Section 21 T20N, R2W

PHOTOGRAPHIC DOCUMENTATION

Date of photography: June 24, 2016

The stone as it was originally exposed, view from above.



The stone more fully exposed, view from above and north.



The stone as viewed from west.



View from east, looking across the stone and west along County Road 900 North.



View from above the stone, looking north toward the concrete post on the north side of County Road 900 North.



For details and documentation, refer to related sheet "Section Corner Record."

SECTION CORNER RECORD

NW 950-900

BOONE COUNTY SURVEYOR'S OFFICE

State Plane grid coordinates NAD83 (2011):

North: 1796020.92 East: 3077134.39 (U.S. survey feet)

Type of monument: Harrison, 4" disk 'Section Corner'

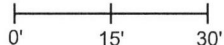
Depth: Three inches above adjacent ground

Indiana tie card references:

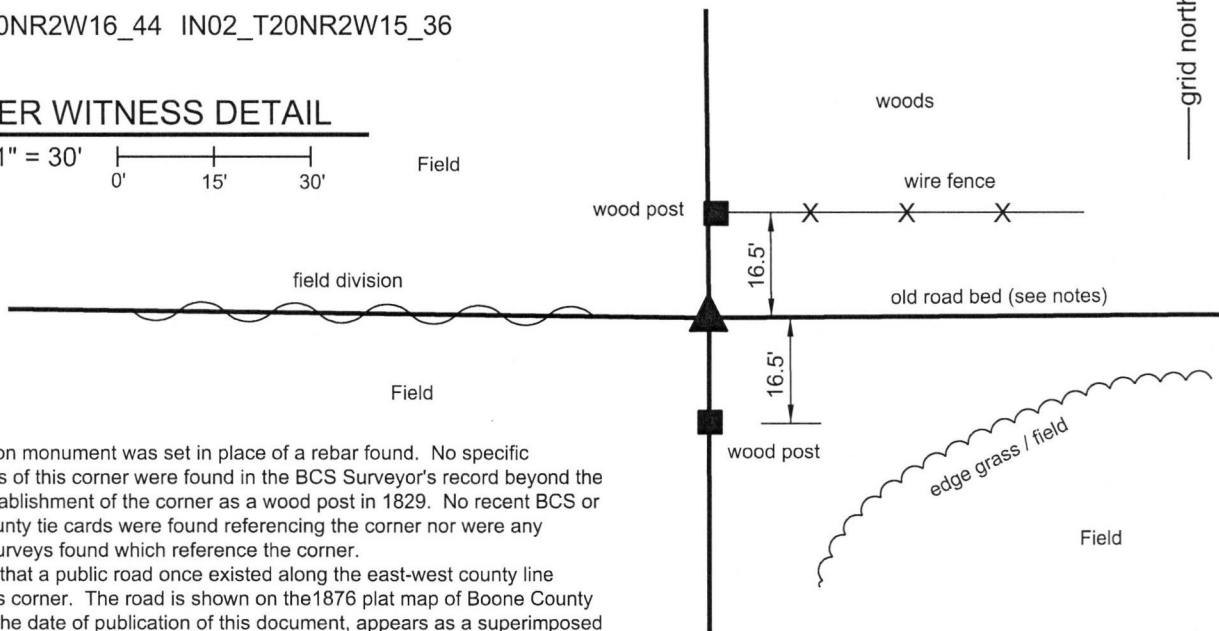
IN02_T20NR2W16_44 IN02_T20NR2W15_36

CORNER WITNESS DETAIL

SCALE 1" = 30'



Field



The Harrison monument was set in place of a rebar found. No specific descriptions of this corner were found in the BCS Surveyor's record beyond the original establishment of the corner as a wood post in 1829. No recent BCS or Clinton County tie cards were found referencing the corner nor were any recorded surveys found which reference the corner.

It is known that a public road once existed along the east-west county line through this corner. The road is shown on the 1876 plat map of Boone County and, as of the date of publication of this document, appears as a superimposed line on Google Maps. Evidence of the road was found in the form of a gravel road bed which is grown over but easily exposed upon minor excavation.

Wood posts were found at 2 rods apart from each other, evidently along the north and south extents of the old road right-of-way. The northerly post had standing fencing to the north and east and cut-off toward the west. The southerly post had no standing fencing attached to it, but evidence of fencing was visible cut to the south, east and west. The found rebar was situated in the old gravel road bed, equidistant from the two ancient posts to the north and south, respectively, one rod from each post. The position of the rebar fit well with the relative positions of the section corner 1/2 mile south (see Corner NW 900-900) and a post marking evidence of the 1/16 corner situated 1/4 mile south of the subject corner. The rebar is also within two feet of being equidistant from said section corner to the south and evidence of the section corner to the north, located in Clinton County, evidenced by a mag nail in the center of an east-west road, in line with a post on the south side of the road.

The two found posts were accepted as witness evidence of the corner and the rebar was accepted as marking the position of the corner. The rebar bore a yellow plastic cap with markings not sufficiently legible to determine to specific number stamped on the cap. The rebar was removed and replaced with a Harrison monument in the same position on October 24, 2018.



Kenneth E. Hedge
Kenneth E. Hedge, County Surveyor

James S. Swift
James S. Swift, IN LS 20200054
November 28, 2018

Perry Township
Clinton County
Sugar Creek Twp
Boone County

Section 16 T20N, R2W	Section 15 T20N, R2W
-------------------------	-------------------------

SECTION CORNER RECORD

BOONE COUNTY SURVEYOR'S OFFICE

NW 950-1000

State Plane grid coordinates NAD83 (2011):
 North: 1796088.73 East: 3071801.834 (U.S. survey feet)

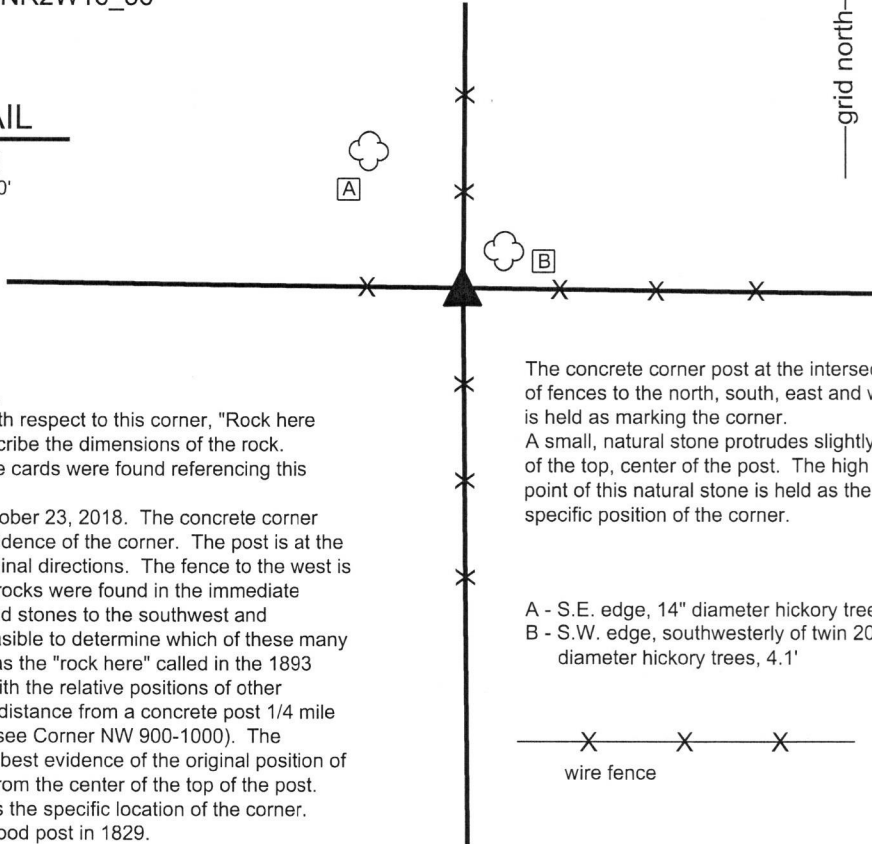
Type of monument: Concrete corner post

Indiana tie card references:
 IN02_T20NR2W17_44 IN02_T20NR2W16_36



CORNER WITNESS DETAIL

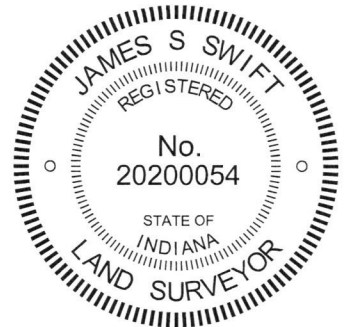
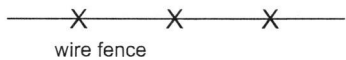
SCALE 1" = 20'
 0' 10' 20'



The concrete corner post was found in place. A BCS record dated April 27, 1893 states, with respect to this corner, "Rock here stump of W. Oak." The record does not describe the dimensions of the rock. No recent BCS or Clinton County Surveyor tie cards were found referencing this corner. This corner was investigated carefully on October 23, 2018. The concrete corner post represents substantial, readily visible evidence of the corner. The post is at the intersection of standing fences in all four cardinal directions. The fence to the west is cut-off slightly to the west of the post. Many rocks were found in the immediate vicinity of the post including a large pile of field stones to the southwest and numerous others in all directions. It is not feasible to determine which of these many rocks may have been present or referenced as the "rock here" called in the 1893 record. The position of the post works well with the relative positions of other proximate corners and is close to double the distance from a concrete post 1/4 mile south and the section corner 1/2 mile south (see Corner NW 900-1000). The concrete post was accepted as providing the best evidence of the original position of the corner. A small natural stone protrudes from the center of the top of the post. The high point of this small stone was held as the specific location of the corner. This corner was originally established as a wood post in 1829.

The concrete corner post at the intersection of fences to the north, south, east and west is held as marking the corner. A small, natural stone protrudes slightly out of the top, center of the post. The high point of this natural stone is held as the specific position of the corner.

- A - S.E. edge, 14" diameter hickory tree, 15.8'
- B - S.W. edge, southwesterly of twin 20" diameter hickory trees, 4.1'



Kenneth E. Hedge
 Kenneth E. Hedge, County Surveyor

James S. Swift
 James S. Swift, IN LS 20200054
 November 14, 2018

Perry Township
 Clinton County
 Sugar Creek Twp
 Boone County

