

SECTION CORNER RECORD

BOONE COUNTY SURVEYOR'S OFFICE

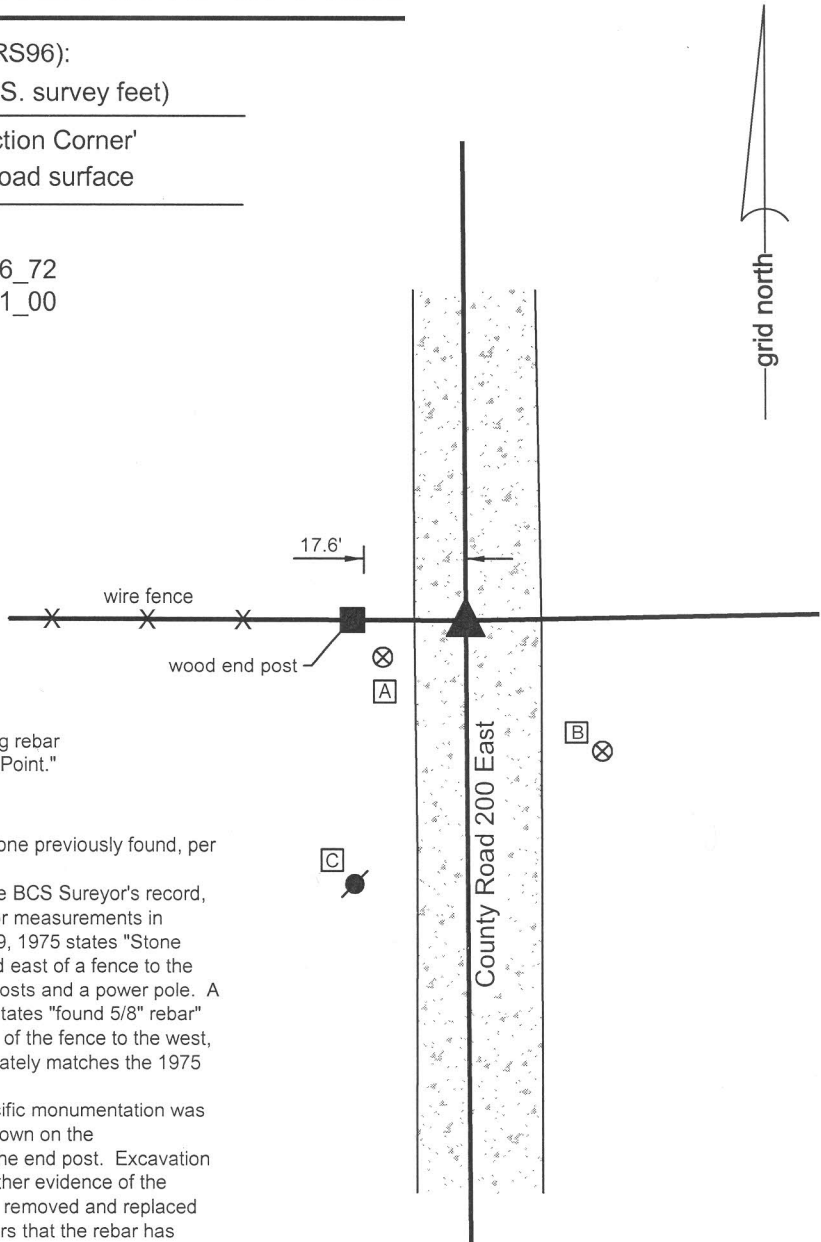
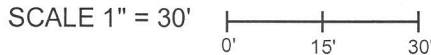
NE 900-200

State Plane grid coordinates NAD83 (CORS96):
 North: 1793212.31 East: 3134820.13 (U.S. survey feet)

Type of monument: Harrison, 4" disk 'Section Corner'
 Depth: six inches below adjacent gravel road surface

Indiana tie card references:
 IN02_T20NR1E17_80 IN02_T20NR1E16_72
 IN02_T20NR1E20_08 IN02_T20NR1E21_00

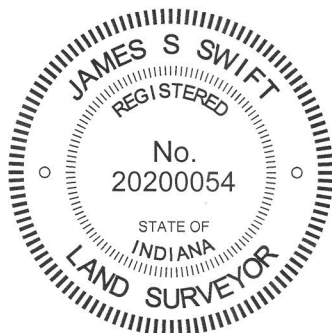
CORNER WITNESS DETAIL



- A - Boone County witness mark, flush, 14.3'
- B - Boone County witness mark, flush, 29.8'
- C - Mag nail set in E. side power pole, 2' a.g., 44.5'

Boone County witness mark is a 3/8" diameter x 2' long rebar bearing a metal cap stamped "Boone County Witness Point."

The Harrison monument was set in the position of a stone previously found, per BCS records.
 No specific descriptions of this corner were found in the BCS Sureyor's record, though the corner is mentioned as the terminal point for measurements in records of 1837 and 1894. A BCS tie card dated July 9, 1975 states "Stone Found - Set Rod" and shows the corner in line with and east of a fence to the west. The tie card shows distance ties to two corner posts and a power pole. A sketch from an unknown source dated April 27, 1977 states "found 5/8" rebar" and also shows the corner at the easterly prolongation of the fence to the west, with a tie to the end post of said fence which approximately matches the 1975 BCS tie card.
 This corner was excavated on May 23, 2014. No specific monumentation was found prior to excavation, but the fence to the west, shown on the aforementioned documents, was yet present, as was the end post. Excavation of the roadway to the east of said post revealed no further evidence of the corner. It is believed that the stone found in 1975 was removed and replaced with a rebar, or 'rod' as called on the tie card. It appears that the rebar has been subsequently removed, most likely in association with road grading activities. The position of the corner was reestablished in line with the fence to the west at 17.6 feet east of the end post on the west side of the road, per the 1975 tie card. A Harrison monument was set at this position.
 This corner was originally established as a wood post in 1822.



Kenneth E. Hedge
 Kenneth E. Hedge, County Surveyor

James S. Swift
 James S. Swift, IN LS 20200054
 March 27, 2015

Clinton Township

Section 17 T20N, R1E	Section 16 T20N, R1E
Section 20 T20N, R1E	Section 21 T20N, R1E

SECTION CORNER RECORD

BOONE COUNTY SURVEYOR'S OFFICE

NE 900-300

State Plane grid coordinates NAD83 (CORS96):
 North: 1793312.18 East: 3140091.56 (U.S. survey feet)

Type of monument: Harrison, 4" disk 'Section Corner'
 Depth: six inches below adjacent gravel road surface

Indiana tie card references:

IN02_T20NR1E16_80 IN02_T20NR1E15_72
 IN02_T20NR1E21_08 IN02_T20NR1E22_00

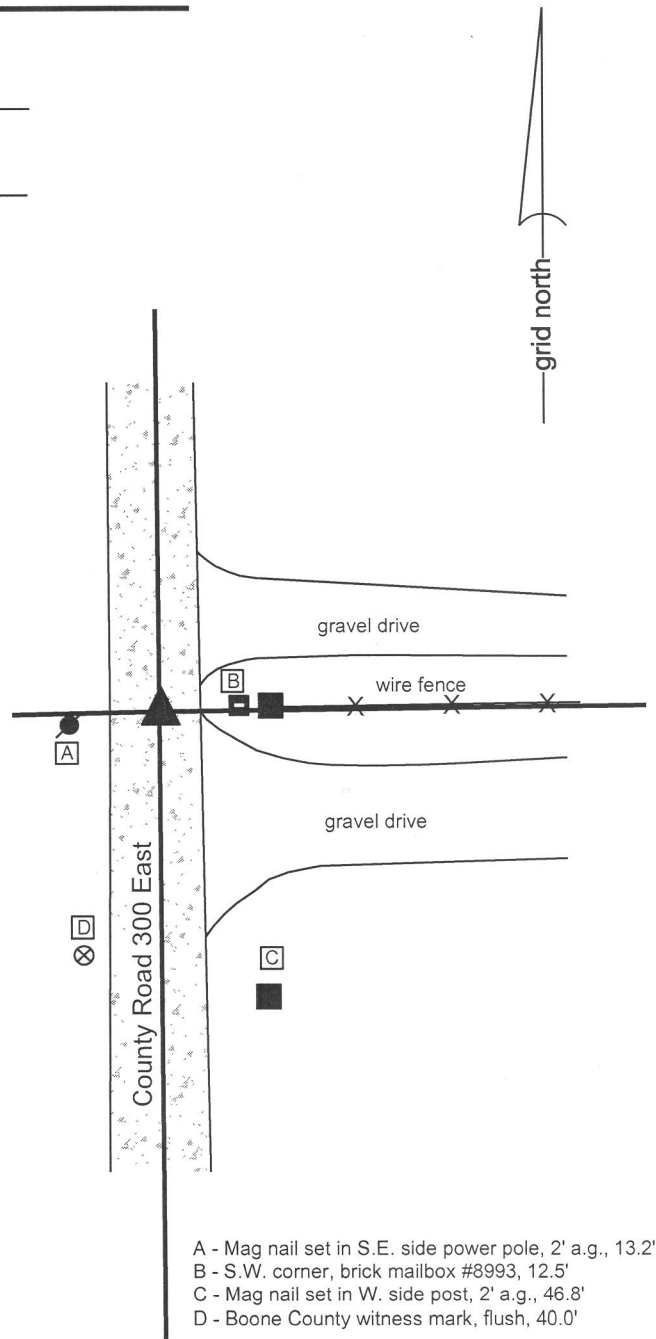
CORNER WITNESS DETAIL

SCALE 1" = 30'

The Harrison monument was set in place of a 5/8 inch diameter rebar found. No specific descriptions of this corner were found in the old BCS Surveyor's Record, though the corner is mentioned as the terminal point for measurements in records of 1891 and 1901. A BCS tie card dated June 5, 1975 states "Stone found 8" deep - set rod."

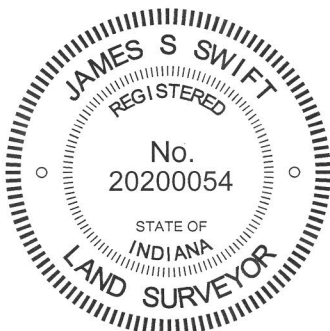
This corner was excavated on May 22, 2015. Prior to excavation, a 5/8 inch diameter rebar was found at the surface of the gravel road. The top of the rebar was bent, but the primary shaft was straight and vertical yielding minimal uncertainty as to the original position of the monument. A stone was found at 2 inches deep, slightly south and west of the rebar. The stone was vertical and oriented in cardinal directions, being 11 inches tall, 4 inches North-South and 5 inches East-West. However, the stone was found to be entirely within the fill material of the road, with the bottom of the stone at the bottom of the road bed. In almost all cases, corner stones are found embedded in the clay layer below the road. The following features of the stone as a monument are uncertain: As noted, it was in the fill material rather than being embedded in the clay. It was at 2 inches deep whereas the 1975 record states that a stone was found at 8 inches. It did not appear to be the case, nor is it most logical to assume it to be the case, that the road had been scraped to 6 inches lower than its level in 1975. No marks were found on the stone, though given the lack of specific description in the BCS Surveyor's Record, this is not a particularly remarkable fact. It is not clear what happened in 1975. The reference points for the distance ties shown on the 1975 tie card are no longer present. In the process of excavating and examining many other corners, it has been observed that the statement 'stone found - set rod [or rail]' on BCS tie cards from the late 1960s through the mid 1970s typically indicates that the stone was found, removed and replaced with a rebar or railroad rail. It is not known whether this was the case at this particular corner. It is possible that this stone was found in 1975, removed and reset higher, adjacent to the original position. It is also possible that the stone was left in place as found and the rebar was set next to the stone, though this possibility leaves unexplained the variation of depth of the stone as found and as reported.

Given the uncertainties with the record and with the depth of the stone being in the fill material of the road and noting that the rebar was situated next to the stone near the northeast corner thereof, the rebar was held as marking the corner. The stone and rebar were both removed and a Harrison monument was set in the position of the vertical shaft of the rebar. This corner was originally established in 1822.



- A - Mag nail set in S.E. side power pole, 2' a.g., 13.2'
- B - S.W. corner, brick mailbox #8993, 12.5'
- C - Mag nail set in W. side post, 2' a.g., 46.8'
- D - Boone County witness mark, flush, 40.0'

Boone County witness mark is a 3/8" diameter x 2' long rebar bearing a metal cap stamped "Boone County Witness Point."



Kenneth E. Hedge
 Kenneth E. Hedge, County Surveyor

James S. Swift
 James S. Swift, IN LS 20200054
 March 27, 2015

Clinton Township

Section 16 T20N, R1E	Section 15 T20N, R1E
Section 21 T20N, R1E	Section 22 T20N, R1E

SECTION CORNER RECORD

NE 950-200

BOONE COUNTY SURVEYOR'S OFFICE

State Plane grid coordinates NAD83 (2011):

North: 1795845.69 East: 3134806.31 (U.S. survey feet)

Type of monument: X cut in concrete bridge deck

Depth: Flush with adjacent road surface

Indiana tie card references:

IN02_T20NR1E16_36 IN02_T20NR1E17_44

CORNER WITNESS DETAIL

SCALE 1" = 100'

- A - X carved in top bolt of guardrail post, 13.7'
- B - Mag Nail set in E. side PWP, 3' a.g., 18.5'
- C - Brass plug in monument box, 245.2'
- D - Brass plug in monument box, 310.2'
- E - Brass plug in monument box, 234.6'
- F - Brass plug in monument box, 409.7'
- G - Brass plug in monument box, 439.6'
- H - Mag nail set in E. side, PWP, 2' a.g., 214.6'

- guardrail

The corner is marked by an "X" mark ground into the existing concrete bridge deck. This mark was set in the same position as a Harrison monument, now removed, which had been set as part of a BCS Section Corner Record dated March 27, 2015. The Harrison monument had been set directly over a vertical section of railroad rail and in the same position as the head of a bolt found directly over the rail. A previous Boone County tie card, dated November 19, 1971, shows the rail (RRR) as being set at that time. A previous Clinton County tie card, dated October 15, 1981, shows the corner to be a bolt over a railroad rail. Both monuments were found in 2015 and the corner was perpetuated per those records and the found monuments. Since that time, the rail and Harrison have been removed as part of the reconstruction of the Scotland Bridge over Sugar Creek. The route survey associated with the bridge project, recorded in Survey Book 18, pages 91 to 93, held the Harrison monument as marking the subject corner and the associated right-of-way purchases are referenced to this position as the corner. No physical monument was perpetuated at the corner during the process of the construction of the new bridge, though several reference monuments were set to the north and south of the corner, which are shown hereon.

Clinton County

Boone County

Clinton County
Road 400 East

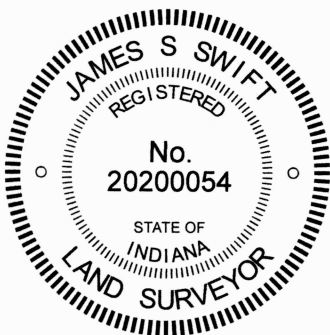
Sugar Creek

Bridge
Deck

gravel drive

Boone County
Road 950 North

Boone County
Road 200 East



Carol Cunningham
Carol Cunningham, County Surveyor

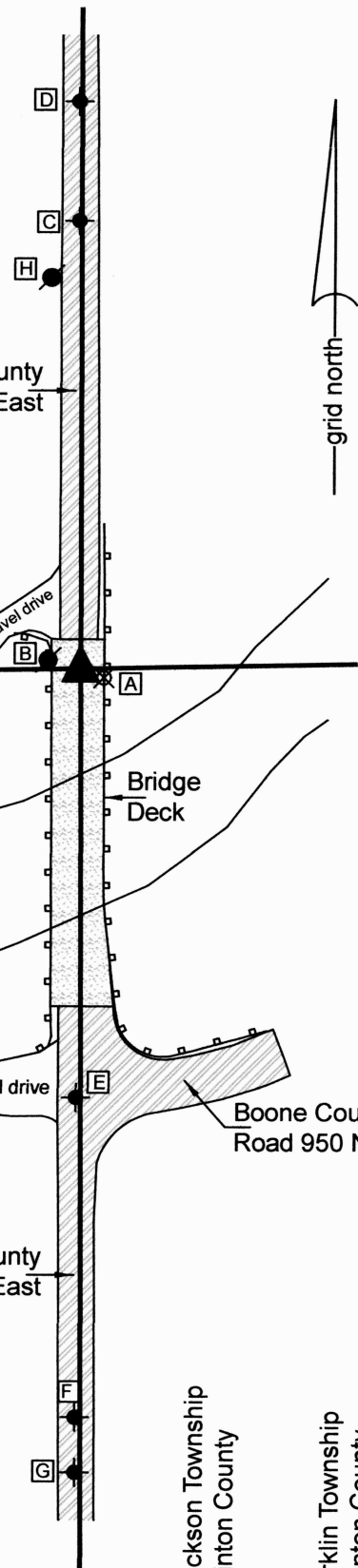
James S. Swift
James S. Swift, IN LS 20200054
August 27, 2024

Clinton Township
Boone County

Jackson Township
Clinton County

Kirklintown
Clinton County

Section 17 T20N, R1E	Section 16 T20N, R1E
-------------------------	-------------------------



SECTION CORNER RECORD

NE 950-200

BOONE COUNTY SURVEYOR'S OFFICE

State Plane grid coordinates NAD83 (CORS96):

North: 1795845.69 East: 3134806.31 (U.S. survey feet)

Type of monument: Harrison, 4" disk 'Section Corner'

Depth: flush with adjacent road surface

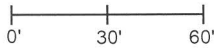
Indiana tie card references:

IN02_T20NR1E17_44

IN02_T20NR1E16_36

CORNER WITNESS DETAIL

SCALE 1" = 60'



Clinton County

Boone County

- A - Mag nail set in E. side power pole, 3' a.g., 15.6'
- B - Boone County witness mark, flush, 13.4
- C - N.E. corner, stone bridge structure, road level, 19.1'
- D - N.W. corner, stone bridge structure, road level, 19.1'

Boone County witness mark is a 3/8" diameter x 2' long rebar bearing a metal cap stamped "Boone County Witness Point."

The Harrison monument was set over a railroad rail found.

No specific descriptions of this corner were found in the BCS Surveyor's Record, though the corner is shown as a terminal point for lines and measurements in a record of January 14, 1915. A BCS tie card dated November 19, 1971 states, with respect to this corner, "No stone - RRR put in." This document graphically demonstrates the corner to the in the center of County Road 200 East and in line with a fence to the west. A Clinton County tie card dated October 15, 1981 shows the corner to be a bolt over a railroad rail.

As this corner falls in an area of substantial fill immediately north of the Scotland Bridge over Sugar Creek, no significant excavation was performed. A Bolt was found at 5 inches in a hole in the asphalt, in agreement with the ties on both of the known tie cards. It is noted that the bolt is at the westerly prolongation of the center of the County Line Road and fits very well with the relative position of stones found at the corners 1/2 mile and 3/4 mile east, respectively. Please refer to documentation for corner NE 950-250.

The bolt was removed and the top of a vertical section of railroad rail was found directly below at 8 inches deep. The bolt was 1/2 inch diameter, with a threaded shaft 15 inches long. The shaft was next to the thin part of the rail, though the head of the bolt had been directly over the center of the top of the rail. The rail and bolt were accepted as the best available evidence of the corner. The top 5 inches of the rail were exposed, 2 foot lengths of 3/8 inch diameter rebars were driven at angles on the east and west sides of the rail. The top of the rail and rebars were encased in concrete and a harrison monument was set over the rail, in the same horizontal position at which the head of the bolt had originally been found.

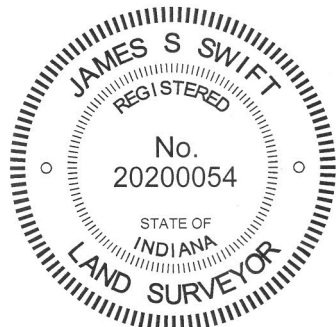
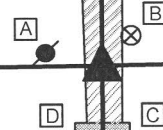
This corner was originally established as a wood post in 1822.

Clinton County
Road 400 East

Scotland Bridge
(concrete arch)

Boone County
Road 200 East

Sugar Creek



Kenneth E. Hedge

 Kenneth E. Hedge, County Surveyor

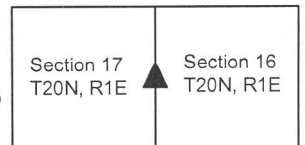
James S. Swift

 James S. Swift, IN LS 20200054
 March 27, 2015

Clinton Township
Boone County

Jackson Township
Clinton County

Kirclin Township
Clinton County



SECTION CORNER RECORD

NE 950-250

BOONE COUNTY SURVEYOR'S OFFICE

State Plane grid coordinates NAD83 (CORS96):

North: 1795893.68 East: 3137439.17 (U.S. survey feet)

Type of monument: Harrison, 4" disk 'Section Corner'

Depth: six inches below adjacent gravel road surface

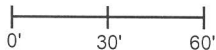
Indiana tie card references:

IN02_T20NR1E16_40



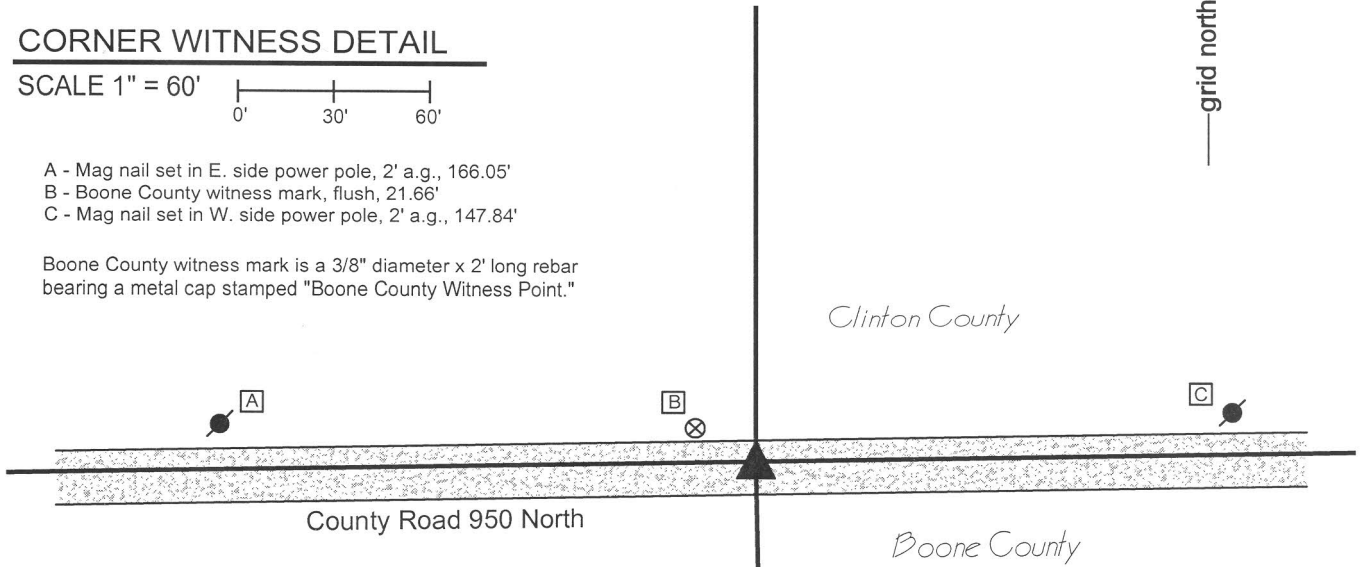
CORNER WITNESS DETAIL

SCALE 1" = 60'



- A - Mag nail set in E. side power pole, 2' a.g., 166.05'
- B - Boone County witness mark, flush, 21.66'
- C - Mag nail set in W. side power pole, 2' a.g., 147.84'

Boone County witness mark is a 3/8" diameter x 2' long rebar bearing a metal cap stamped "Boone County Witness Point."



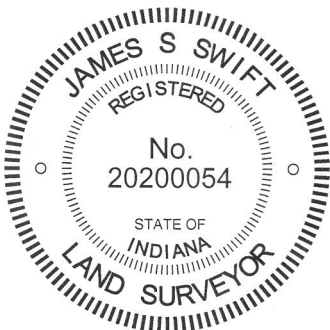
The Harrison monument was set in place of a stone found.

No specific descriptions of this corner were found in the old BCS Surveyor's Record, nor were any recent tie cards found referencing this corner. However, a record dated January 14, 1915 describes an area which encompasses the southwest quarter and the west half of the southeast quarter of section 16 along with a portion of the northwest quarter of section 21 to the south. This description and the original drawing of the parcel, found in the BCS Surveyor's Record, treats the north line of the southwest quarter and the north line of the west half of the southeast quarter as one straight line, reciting a distance of 39.53 chains from corner to corner. Neither the drawing nor the description refer to the center quarter corner of section 16, which is the subject of this record.

The subject corner and the corner approximately 1/4 mile east (being referred to as corner 1 in the aforementioned record of 1915) were excavated on August 22, 2014. The easterly corner was excavated first and a stone was found at this corner. The stone was in the center of the intersection of a T-intersection and generally in line with the fence to the south. The distance between the stone and the west quarter corner of section 16 (See documentation for corner NE-950-200) was approximately 4 feet shorter than the 39.53 chains described in the 1914 record, which is considered to a close match to ancient measurements over that distance, especially given that the line had to be measured across Sugar Creek. Comparing the relative positions of the west and east quarter corners of section 16 along with the stone at corner 1 (N.E. corner, W. 1/2, S.E.1/4), a calculated position for the subject corner was determined and excavation was performed at this point. A stone was found within two feet of this calculated position. The stone measured 8 inches E-W by 5 inches N-S and was approximately 4 inches tall. The stone was embedded in the clay layer below the road. The stone was located one foot south of the straight line described in the 1915 record and fit very well in an east-west orientation with the relative positions of the stone 1/4 mile east (corner 1 per the 1915 record) and a railroad spike commonly accepted as marking the east quarter corner of section 16.

Given the harmony of this monument with adjacent monuments and the written record, it was accepted as marking the corner. The stone was removed and a Harrison monument was set at this position.

This corner is not an original federal corner. The earliest date of the establishment of this corner is not known.

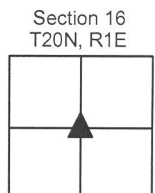


Kenneth E. Hedge
Kenneth E. Hedge, County Surveyor

James S. Swift
James S. Swift, IN LS 20200054
March 27, 2015

Kirklin Township
Clinton County

Clinton Township
Boone County



PHOTOGRAPHIC DOCUMENTATION

Date of photography: August 22, 2014

The stone at the subject corner.



The stone at the corner 1/4 mile east.



View from above the stone at the corner 1/4 mile east, looking west along the County Line Road towards the subject corner.



For details and documentation, refer to related sheet "Section Corner Record."

SECTION CORNER RECORD

NE 950-300

BOONE COUNTY SURVEYOR'S OFFICE

State Plane grid coordinates NAD83 (2011):

North: 1795942.54 East: 3140073.11 (U.S. survey feet)

Type of monument: Harrison, 4" disk 'Section Corner'

Depth: One inch below adjacent road surface

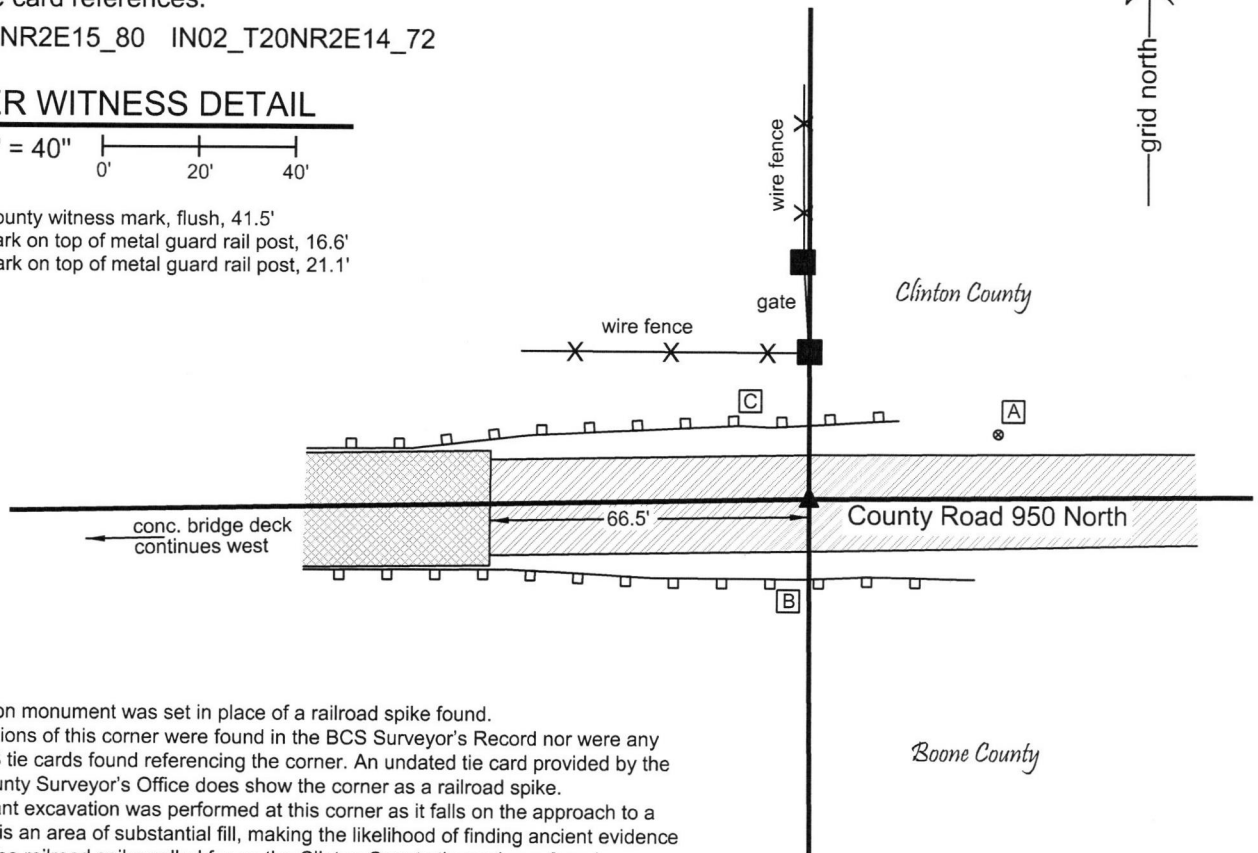
Indiana tie card references:

IN02_T20NR2E15_80 IN02_T20NR2E14_72

CORNER WITNESS DETAIL

SCALE 1" = 40"
0' 20' 40'

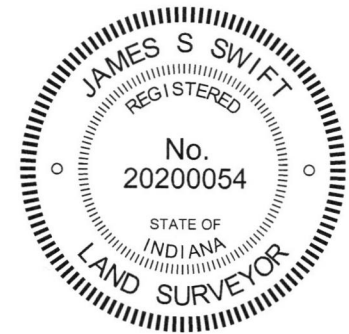
- A - Boone County witness mark, flush, 41.5'
- B - Chisel Mark on top of metal guard rail post, 16.6'
- C - Chisel Mark on top of metal guard rail post, 21.1'



The Harrison monument was set in place of a railroad spike found. No descriptions of this corner were found in the BCS Surveyor's Record nor were any recent BCS tie cards found referencing the corner. An undated tie card provided by the Clinton County Surveyor's Office does show the corner as a railroad spike. No significant excavation was performed at this corner as it falls on the approach to a bridge and is an area of substantial fill, making the likelihood of finding ancient evidence minimal. The railroad spike called for on the Clinton County tie card was found undisturbed. The spike fits with local evidence of the corner in the form of the east-west roadway and the post on the north side of the road. It also fits well with respect to proximate corners. The plans for the adjacent bridge were not found. The Boone County Highway Department does not have the plans and Clinton County did not provide access to them, if they do have them. The railroad spike was accepted as providing the best available evidence of the corner and was held as marking the corner. On August 12, 2016, the railroad spike was removed and replaced with a Harrison monument in the same position. This corner was originally established as a wood post in 1822.

Kenneth E. Hedge
Kenneth E. Hedge, County Surveyor

James S. Swift
James S. Swift, IN LS 20200054
March 23, 2017



Kirklin Township
Clinton County
Clinton Township
Boone County

Section 16 T20N, R1E	Section 15 T20N, R1E
-------------------------	-------------------------