

SECTION CORNER RECORD

NW 300-900

BOONE COUNTY SURVEYOR'S OFFICE

State Plane grid coordinates NAD83 (2011):

North: 1761431.59 East: 3077195.56 (U.S. survey feet)

Type of monument: Harrison, 4" disk 'Section Corner'

Depth: One inch below adjacent road surface

Indiana tie card references:

IN02_T19NR2W15_72 IN02_T19NR2W16_80

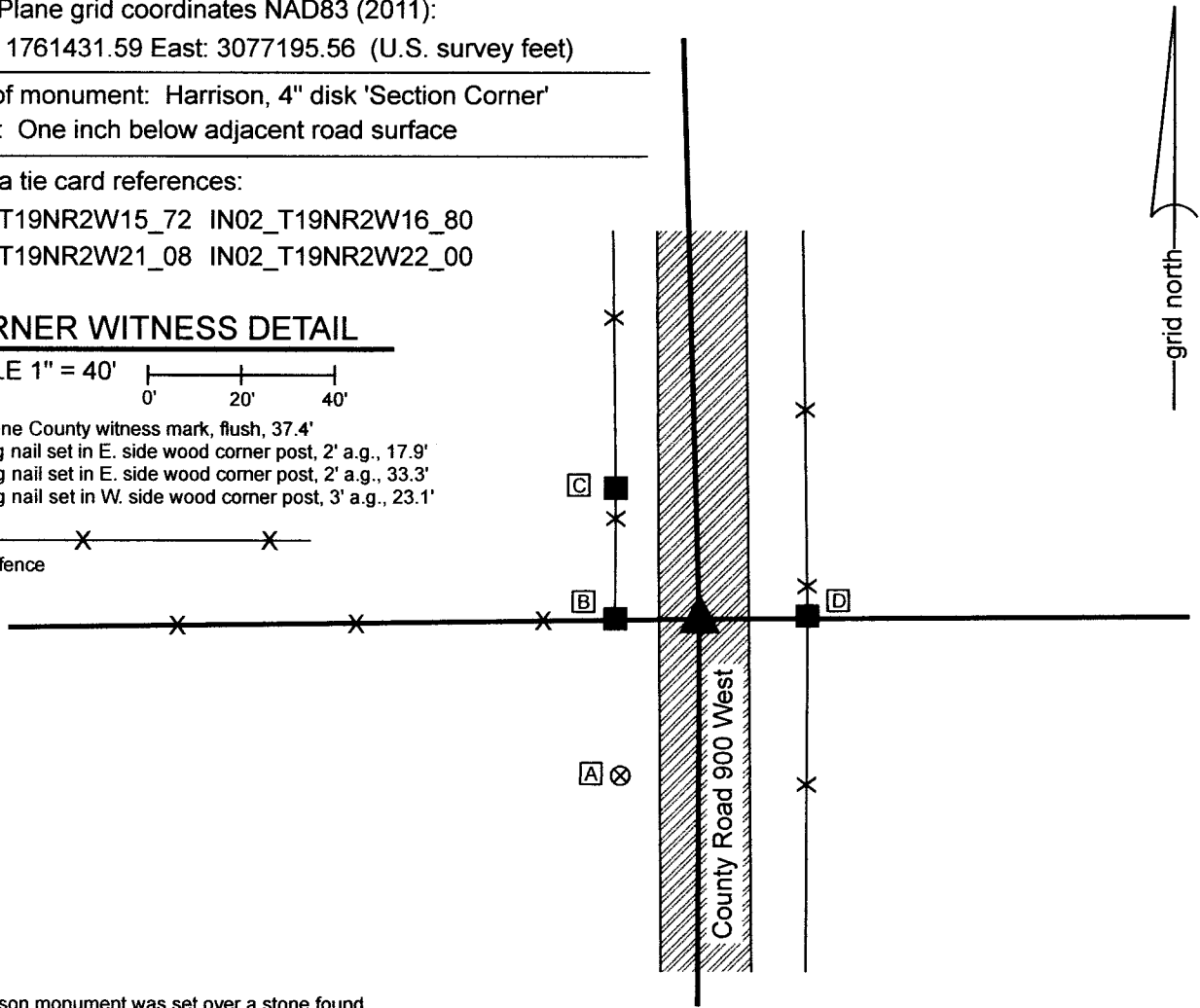
IN02_T19NR2W21_08 IN02_T19NR2W22_00

CORNER WITNESS DETAIL

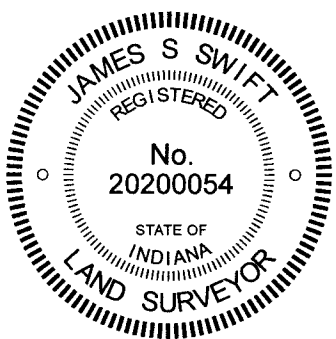
SCALE 1" = 40'

- A - Boone County witness mark, flush, 37.4'
- B - Mag nail set in E. side wood corner post, 2' a.g., 17.9'
- C - Mag nail set in E. side wood corner post, 2' a.g., 33.3'
- D - Mag nail set in W. side wood corner post, 3' a.g., 23.1'

- wire fence

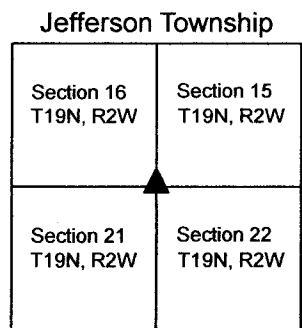


The Harrison monument was set over a stone found.
 A BCS record of August 21, 1865 states, with respect to this corner, "A rock set - trees gone." A BCS tie card dated August 26, 1969 shows the corner in the approximate center of County Road 900 West, in line with fences to the east and west with a label "No Stone Located."
 This corner was excavated on October 18, 2022. Prior to excavation, a Mag Nail was found at 2 inches below grade, approximately in-line with a fence to the west and an old wood corner post to the east. Excavation revealed a vertical section of railroad rail found at 8 inches below grade, directly below the Mag Nail. The rail is assumed to have been set in association with the creation of the 1969 tie card, as setting rails to mark corners was a known practice of BCS field crews of that era. Further excavation revealed a stone found at 19 inches below grade, west of the rail. With the top 7 inches of the stone exposed, it measured 14 inches N-S by 11 inches E-W. The stone was measured to be at least 11 inches tall on the north side and was clearly yet larger in the vertical dimension. No specific marks were observed, nor were any noted in the 1865 record. The stone was embedded in the clay layer below the road bed, protruding 2 inches into the bottom of the road bed. The stone was accepted as being the same monument as is referenced on the 1865 BCS entry and was held as marking the corner. A Harrison monument was set over the top, high point of the stone, near the north edge of the top of the stone. The rail and nail, both removed during excavation, had been 0.2 foot north and 1.5 feet east of the position held as the corner. This corner was originally established as a wood post in 1829.



Kenneth E. Hedge
 Kenneth E. Hedge, County Surveyor

James S. Swift
 James S. Swift, IN LS 20200054
 October 25, 2022



SECTION CORNER RECORD

NW 300-950

BOONE COUNTY SURVEYOR'S OFFICE

State Plane grid coordinates NAD83 (2011):
North: 1761397.99 East: 3074566.54 (U.S. survey feet)

Type of monument: Harrison, 4" disk 'Section Corner'
Depth: Two inches above surrounding ground

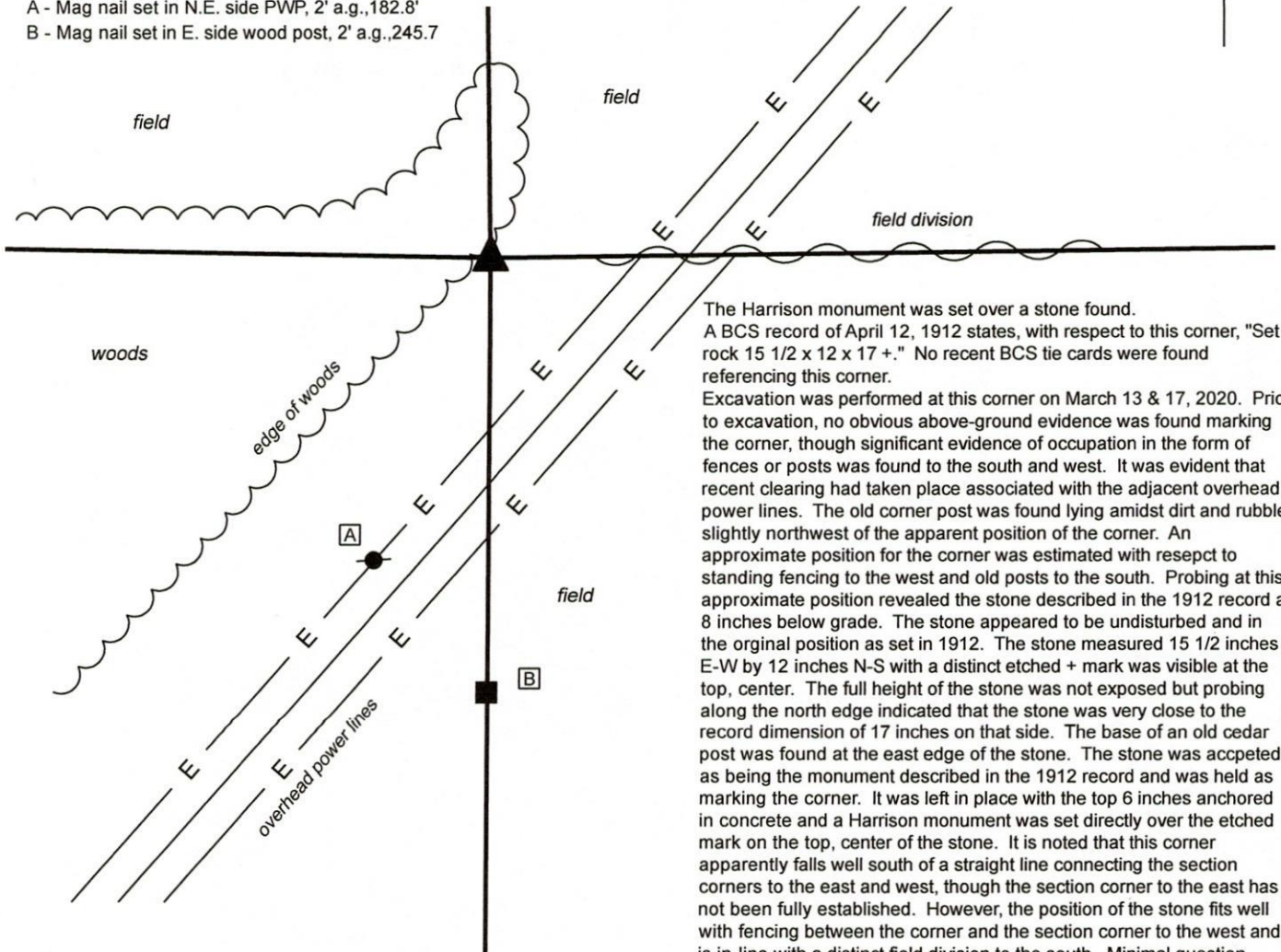
Indiana tie card references:
IN02_T19NR2W16_76 IN02_T19NR2W21_04

CORNER WITNESS DETAIL

SCALE 1" = 100'
0' 50' 100'



- A - Mag nail set in N.E. side PWP, 2' a.g., 182.8'
- B - Mag nail set in E. side wood post, 2' a.g., 245.7



The Harrison monument was set over a stone found. A BCS record of April 12, 1912 states, with respect to this corner, "Set rock 15 1/2 x 12 x 17 +." No recent BCS tie cards were found referencing this corner.

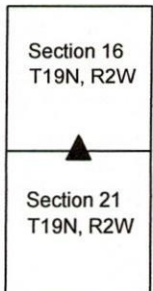
Excavation was performed at this corner on March 13 & 17, 2020. Prior to excavation, no obvious above-ground evidence was found marking the corner, though significant evidence of occupation in the form of fences or posts was found to the south and west. It was evident that recent clearing had taken place associated with the adjacent overhead power lines. The old corner post was found lying amidst dirt and rubble slightly northwest of the apparent position of the corner. An approximate position for the corner was estimated with respect to standing fencing to the west and old posts to the south. Probing at this approximate position revealed the stone described in the 1912 record at 8 inches below grade. The stone appeared to be undisturbed and in the original position as set in 1912. The stone measured 15 1/2 inches E-W by 12 inches N-S with a distinct etched + mark was visible at the top, center. The full height of the stone was not exposed but probing along the north edge indicated that the stone was very close to the record dimension of 17 inches on that side. The base of an old cedar post was found at the east edge of the stone. The stone was accepted as being the monument described in the 1912 record and was held as marking the corner. It was left in place with the top 6 inches anchored in concrete and a Harrison monument was set directly over the etched mark on the top, center of the stone. It is noted that this corner apparently falls well south of a straight line connecting the section corners to the east and west, though the section corner to the east has not been fully established. However, the position of the stone fits well with fencing between the corner and the section corner to the west and is in-line with a distinct field division to the south. Minimal question exists as to whether this is the position established in 1912. This corner was originally established as a wood post in 1829.



Kenneth E. Hedge
Kenneth E. Hedge, County Surveyor

James S. Swift
James S. Swift, IN LS 20200054
March 23, 2020

Jefferson Township



SECTION CORNER RECORD

NW 350-900

BOONE COUNTY SURVEYOR'S OFFICE

State Plane grid coordinates NAD83 (2011):

North: 1764061.55 East: 3077116.17 (U.S. survey feet)

Type of monument: Harrison, 4" disk 'Section Corner'

Depth: One inch below adjacent road surface

Indiana tie card references:

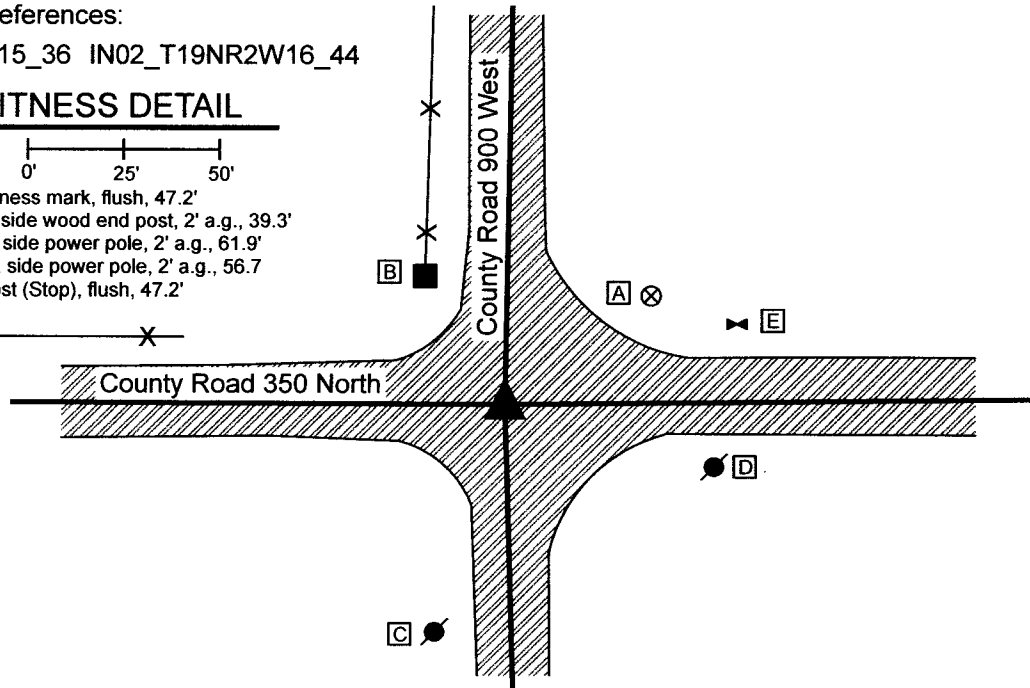
IN02_T19NR2W15_36 IN02_T19NR2W16_44

CORNER WITNESS DETAIL

SCALE 1" = 50'

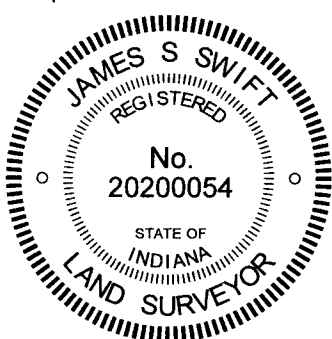
- A - Boone County witness mark, flush, 47.2'
- B - Mag nail set in S. side wood end post, 2' a.g., 39.3'
- C - Mag nail set in N. side power pole, 2' a.g., 61.9'
- D - Mag nail set in W. side power pole, 2' a.g., 56.7'
- E - West edge signpost (Stop), flush, 47.2'

- wire fence



The Harrison monument was set in place of a railroad spike and railroad rail found and set above fragments of a wood post found. It is noted that County Road 900 West bends substantially at this corner. A straight line connecting the southeast and northeast corners of Section 16 falls approximately 60 feet east of the center of the intersection and monumented position of the corner per a 1972 BCS tie card. Prior to excavation, the BCS record for Sections 15 and 16 was analyzed thoroughly to determine when the corner may have been established at the current position. Based on that analysis, it is clear that the corner was in substantially the same position as it is now as early as 1863 and most likely the bend in the line dates to the original federal survey of 1829. The corner is referenced as the terminal point for measurements in BCS entries of January 7, 1833, May 11, 1834, March 12, 1857 and February 26, 1863. The 1863 entry shows a total distance between the east and west quarter corners of Section 16 and also uniform distances, being one-quarter of the total distance, to corners every quarter-mile through the center of Section 16. Ample evidence of these corners remains in the form of metal monuments in line with old posts on the south side of the road. The current evidence fits quite well with the measurements recited in the 1863 record, indicating that the position of the east quarter corner of Section 16, as monumented prior to excavation, is in substantially the same position as was held in 1863. A subsequent BCS record of August 21, 1865, references this corner as "Found from Oak Tree." This appears to be a reference to a 30-inch Burr Oak called out as an original bearing tree in the original federal field notes of 1829. The 1863 and 1865 surveys were performed by the same County Surveyor, David M. Burns.

A BCS tie card dated April 17, 1972 shows the corner at the center of the intersection with the statement "No Stone. RRR Put in." This corner was excavated on October 19, 2022. Prior to excavation, a railroad spike was found at 1 inch deep at the center of the intersection. Excavation revealed a vertical section of railroad rail found directly below the railroad spike. Further excavation did not reveal a stone, but did reveal fragments of two wood posts, situated horizontally and oriented in cardinal directions, which intersected at approximately the position of the rail. The fragments of wood were found at 30 inches deep, embedded in the clay layer below the road. The north-south post was mostly fragments, but clearly represented what had been a single object. The east-west post was much more intact and discovered to be 3.5 inches by 3.5 inches. Approximately 3 feet of each post was exposed. The posts are likely longer, but the full length of each was not exposed. The apparent intersection point of the two horizontal posts was slightly southeast of the position of the rail (removed during excavation). For purposes of monumenting the corner, the position of the rail was held. A Harrison monument was set at this position.



Kenneth E. Hedge
 Kenneth E. Hedge, County Surveyor

James S. Swift
 James S. Swift, IN LS 20200054
 October 25, 2022

Jefferson Township

Section 16 T19N, R2W	Section 15 T19N, R2W
-------------------------	-------------------------

SECTION CORNER RECORD

NW 400-900

BOONE COUNTY SURVEYOR'S OFFICE

State Plane grid coordinates NAD83 (2011):

North: 1766716.70 East: 3077157.91 (U.S. survey feet)

Type of monument: Harrison, 4" disk 'Section Corner'

Depth: One inch below adjacent road surface

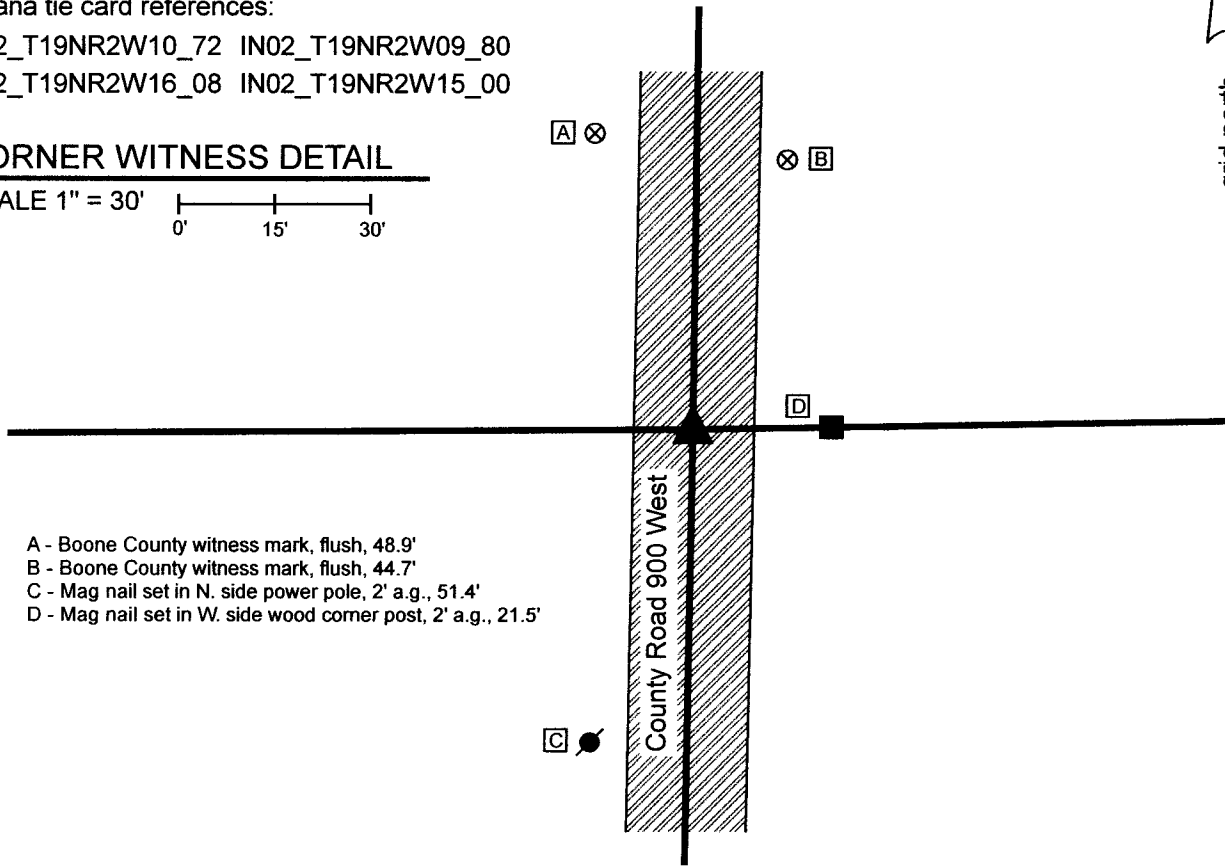
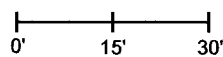
Indiana tie card references:

IN02_T19NR2W10_72 IN02_T19NR2W09_80

IN02_T19NR2W16_08 IN02_T19NR2W15_00

CORNER WITNESS DETAIL

SCALE 1" = 30'

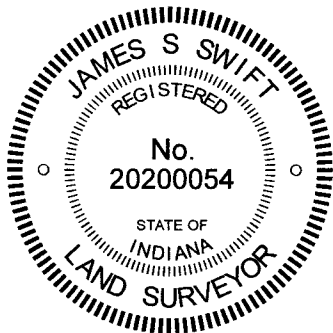


- A - Boone County witness mark, flush, 48.9'
- B - Boone County witness mark, flush, 44.7'
- C - Mag nail set in N. side power pole, 2' a.g., 51.4'
- D - Mag nail set in W. side wood corner post, 2' a.g., 21.5'

The Harrison monument was set in place of a vertical section of railroad rail found. No specific descriptions of this corner were found in the BCS Surveyor's Record beyond the original establishment of the corner as a wood post in 1829. The corner is listed as the terminal point for measurements in an entry of 1868. A BCS tie card dated August 27, 1869 shows the corner in-line with a fence to the east, but does not state what monument was set or found.

This corner was excavated on October 18, 2022. Prior to excavation, a Mag Nail with a washer was found at 2 inches below grade, in-line with an old corner post to the east, in agreement with the 1969 tie card. Excavation revealed a vertical section of railroad rail at 9 inches deep, directly below the Mag Nail. Further excavation of an area extending 2.5 feet in all cardinal directions revealed no further evidence of the corner. Excavation was performed to 19 inches deep, approximately 4 inches into the clay layer below the bottom of the road bed. The rail is assumed to have been set in 1969, as it is known that BCS field crews of that era set rails to mark corners. It is not known if the rail replaced a stone, as the 1969 tie card makes no mention of a monument set or found. Typically, when BCS crews for the late 1960s and early 1970s found stones, they removed the stone and replaced it with a rail. Due to the lack of information on the tie card, this cannot be confirmed.

The nail and rail were held to mark the corner. Both monuments were removed during excavation and a Harrison monument was set in the same position on October 18, 2022.



Kenneth E. Hedge
 Kenneth E. Hedge, County Surveyor

James S. Swift
 James S. Swift, IN LS 20200054
 October 25, 2022

Sugar Creek Township

Section 9 T19N, R2W	Section 10 T19N, R2W
Section 16 T19N, R2W	Section 15 T19N, R2W

Jefferson Township

SECTION CORNER RECORD

NW 400-950

BOONE COUNTY SURVEYOR'S OFFICE

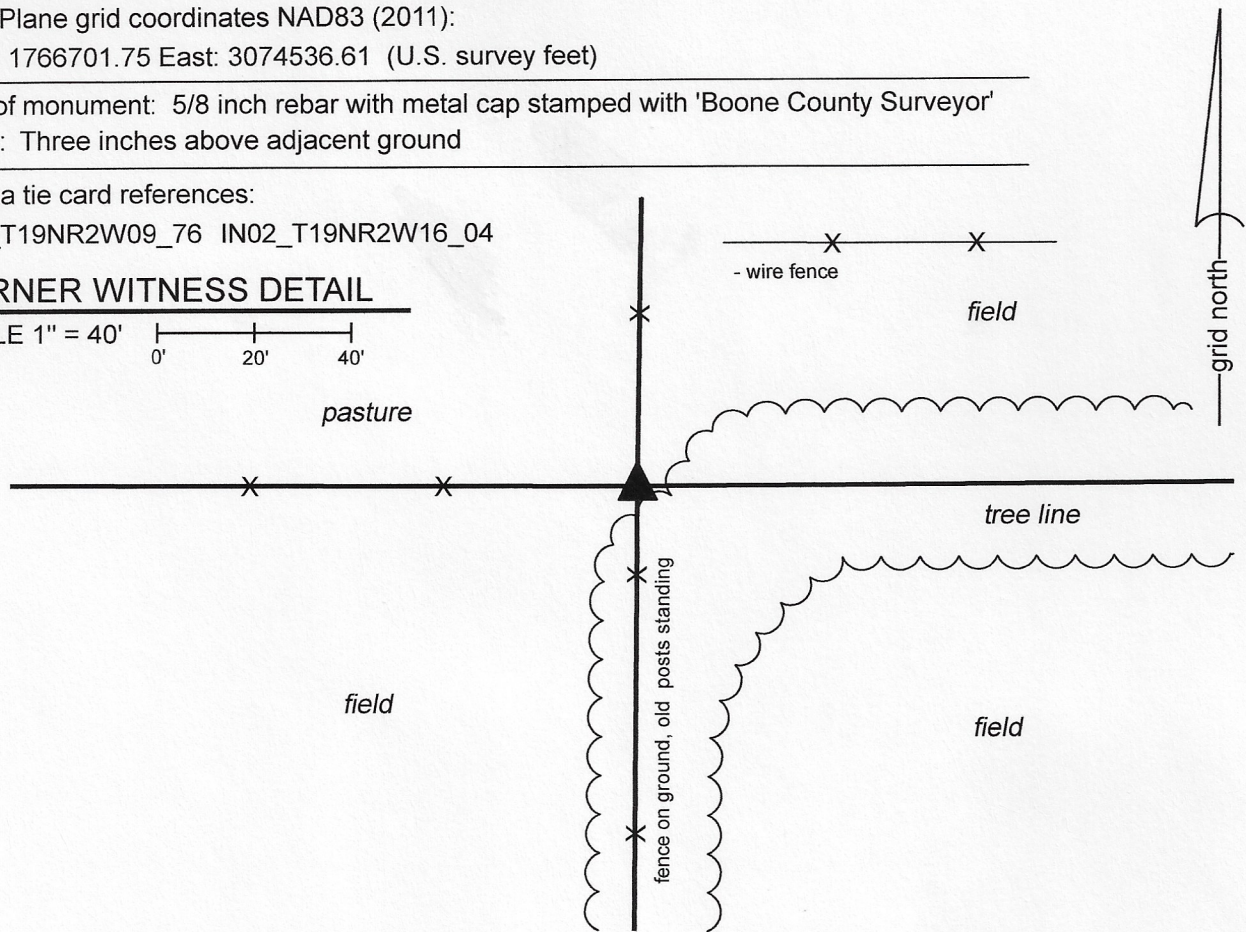
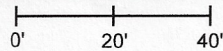
State Plane grid coordinates NAD83 (2011):
North: 1766701.75 East: 3074536.61 (U.S. survey feet)

Type of monument: 5/8 inch rebar with metal cap stamped with 'Boone County Surveyor'
Depth: Three inches above adjacent ground

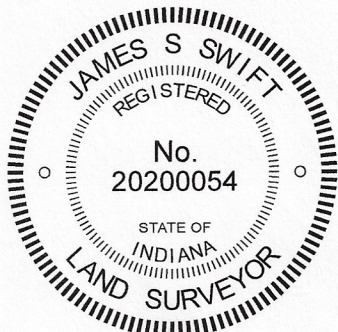
Indiana tie card references:
IN02_T19NR2W09_76 IN02_T19NR2W16_04

CORNER WITNESS DETAIL

SCALE 1" = 40'



The corner is marked by a 30 inch length of 5/8 inch rebar set in concrete and capped with a metal cap stamped 'Boone County Surveyor.' The rebar is adjacent to the east edge of a 7 inch round wood corner post. The rebar is intended to mark the corner and is not a witness monument. A BCS record of unknown date (between 1863 and 1912) states, with respect to this corner and other corners in section 16, "Run line from A east to a Thence to B. Located, set rock + 11 1/2-8-5 bottom. set rock 8x9x5 +." It is noted that the corner 'B' refers to the subject corner. No recent BCS tie cards were found referencing the corner, nor were surveys found recorded in the Boone County Recorder's Office which reference the corner. This corner was excavated on April 1 and April 7, 2020. Prior to excavation, a wood corner post was observed at the intersection of standing, relatively new fence to the north and west and ancient fencing to the south. The fence to the south is mostly on the ground but numerous ancient wood posts are still standing, marking the specific location of the old fence. Manual excavation and extensive probing in the vicinity of the post revealed no rocks found. It was observed that an old square cedar post is lying on the ground approximately 4 feet east of the standing corner post, evidently having been removed from the ground and perhaps replaced with the newer post. The fate of the stones referenced in the undated record is not known. It is considered most likely that they were removed at the time the ancient corner post was replaced with the newer post. Although the fence to the west is relatively new, old corner posts were observed to remain standing, providing evidence of the aliquot corners approximately 1/8, 1/4 and 3/8 of a mile, respectively, to the west. Analysis of the relative positions of the old posts to the west and the line of old posts to the south yielded the conclusion that the most probable position of the corner is slightly east of the standing corner post. This position, being in-line with the posts to the south, was held as the specific position of the corner. Due to the proximity of the standing corner post, a Harrison monument could not be set at this position. The corner was marked by a 30 inch length of 5/8 inch rebar set in concrete and capped with a metal cap stamped 'Boone County Surveyor.' The center of the rebar is 0.16 foot east of the east edge of the standing post. This corner was originally established as a wood post in 1829.



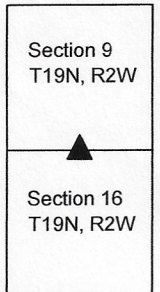
Kenneth E. Hedge
Kenneth E. Hedge, County Surveyor

James S. Swift
James S. Swift, IN LS 20200054

April 29, 2020

Sugar Creek
Township

Jefferson
Township



SECTION CORNER RECORD

BOONE COUNTY SURVEYOR'S OFFICE

NW 400-1000

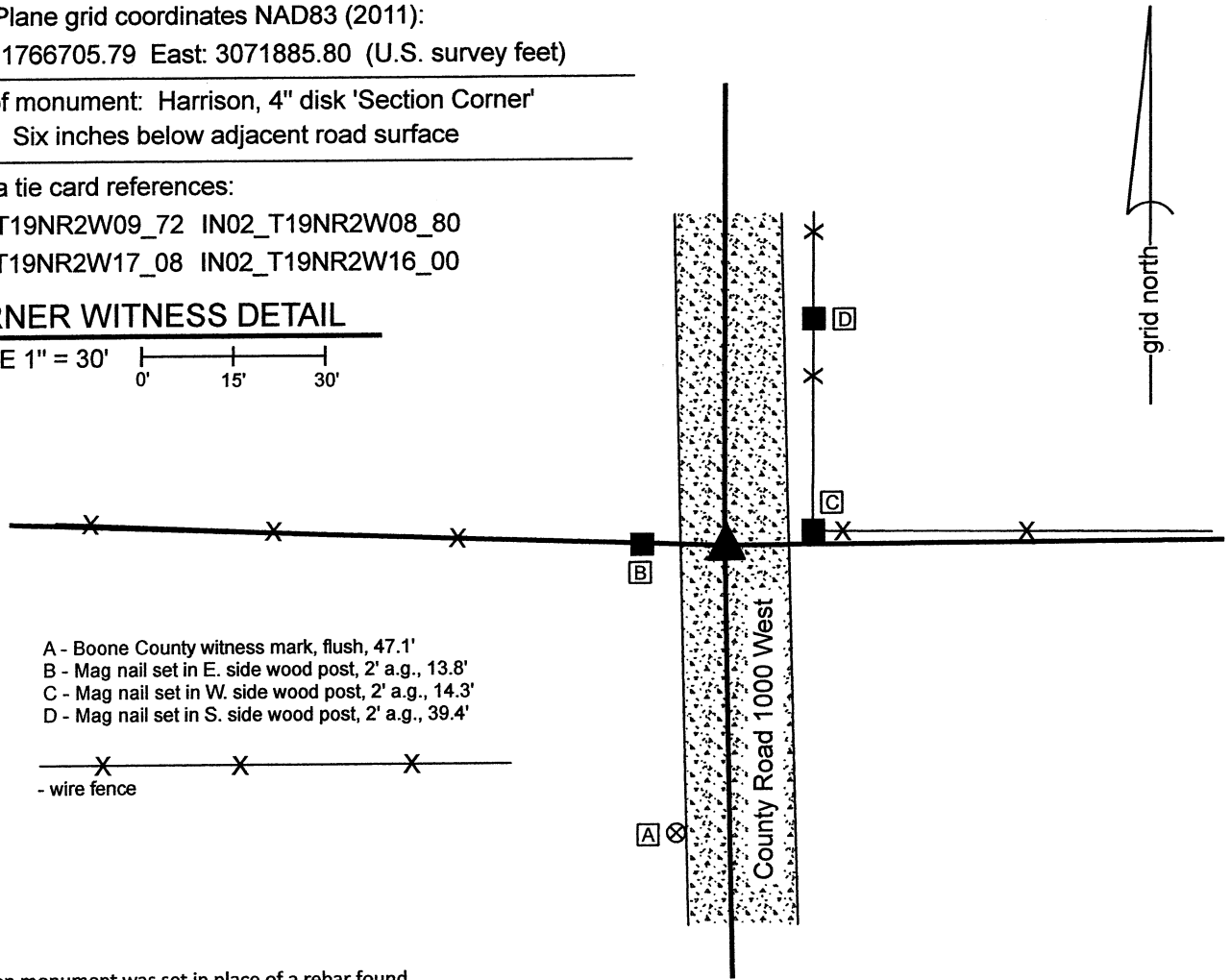
State Plane grid coordinates NAD83 (2011):
 North: 1766705.79 East: 3071885.80 (U.S. survey feet)

Type of monument: Harrison, 4" disk 'Section Corner'
 Depth: Six inches below adjacent road surface

Indiana tie card references:
 IN02_T19NR2W09_72 IN02_T19NR2W08_80
 IN02_T19NR2W17_08 IN02_T19NR2W16_00

CORNER WITNESS DETAIL

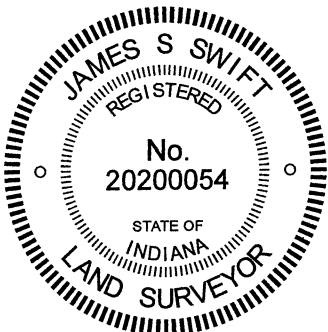
SCALE 1" = 30'



- A - Boone County witness mark, flush, 47.1'
- B - Mag nail set in E. side wood post, 2' a.g., 13.8'
- C - Mag nail set in W. side wood post, 2' a.g., 14.3'
- D - Mag nail set in S. side wood post, 2' a.g., 39.4'

- wire fence

The Harrison monument was set in place of a rebar found.
 A BCS record of December 27, 1862 to January 3, 1863 states, with respect to this corner, "Reestablished from one tree. Set a Rock 23,17,12 marked +." A BCS tie card dated September 2, 1969 states "Stone Located. R/R Rail Set."
 This corner was excavated on December 15, 2021. Prior to excavation, a rebar with orange plastic cap (markings illegible) was found at 2 inches deep in the center of the gravel roadway, opposite posts on both sides of the road and in-line with a fence to the east. Excavation did not reveal additional evidence of the corner. Per the 1969 tie card, it was expected that a section of railroad rail would be found, but no such monument was found. It was observed that the road bed in this immediate vicinity is only about 4 inches thick. The position of the found rebar fit with the local evidence of the corner and fit with the graphic representation of the corner on the 1969 tie card, being in the center of the road and in-line with the fences. The position of the rebar also fit with the distance ties to the posts on the east and west sides of the road, though it is noted that these posts appear that they may be newer than what was present in 1969. It is considered most likely that the stone called for in the 1863 record was removed in 1969 when the railroad rail was installed and that subsequently the rail was removed by road grading equipment. Surveys by Jerry L. Carter, LS S0350, recorded as Instrument 2003005080 and 2003005081 in the Office of the Boone County Recorder show the corner as a railroad rail. The position of the found rebar fits with the position of the rail shown on that survey, relative to other survey monuments shown thereon. The origin of the rebar is not known but it fits with the local evidence of the corner the 1969 tie card, and the 2003 surveys. The rebar was held as marking the corner and replaced with a Harrison monument. This corner was originally established as a wood post in 1829.



Kenneth E. Hedge
 Kenneth E. Hedge, County Surveyor

James S. Swift
 James S. Swift, IN LS 20200054
 December 20, 2021

Sugar Creek
 Township

Jefferson
 Township

Section 8 T19N, R2W	Section 9 T19N, R2W
Section 17 T19N, R2W	Section 16 T19N, R2W