

SECTION CORNER RECORD

SW 200-900

BOONE COUNTY SURVEYOR'S OFFICE

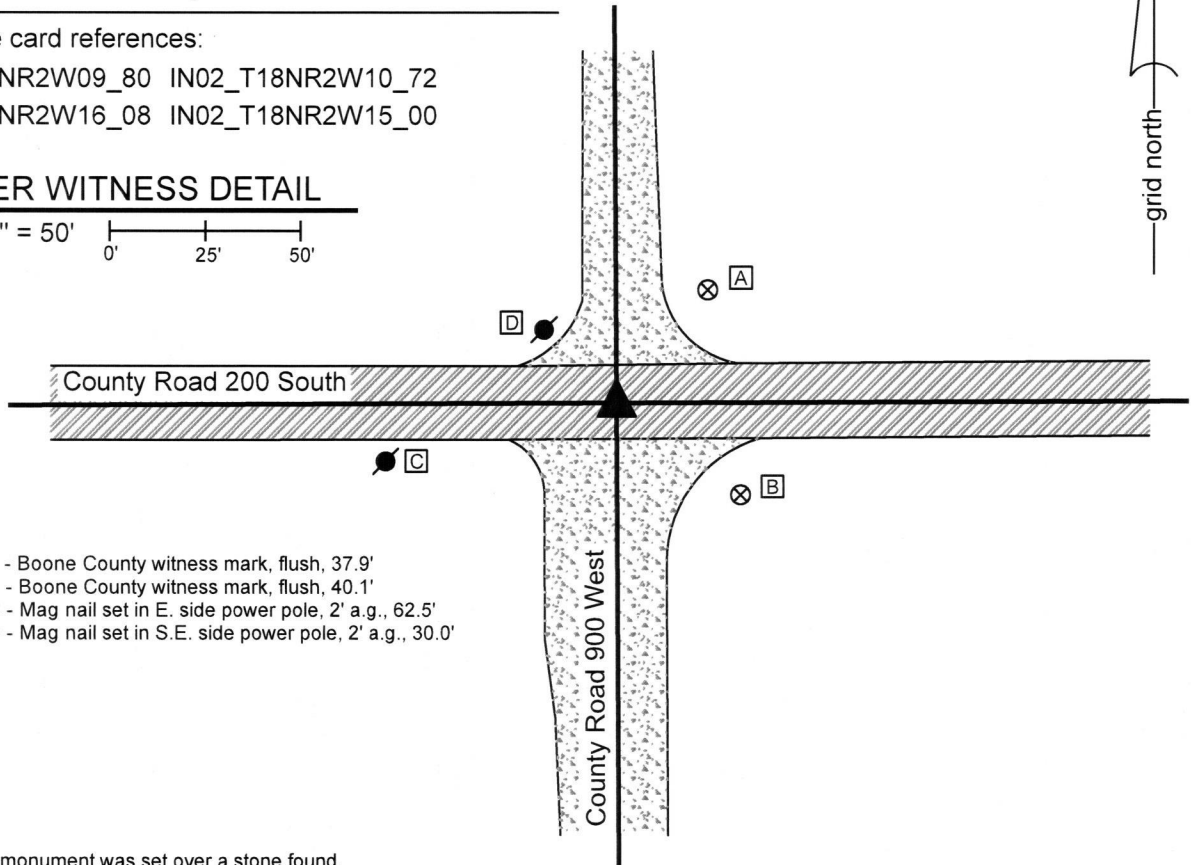
State Plane grid coordinates NAD83 (2011):
 North: 1734724.34 East: 3077292.16 (U.S. survey feet)

Type of monument: Harrison, 4" disk 'Section Corner'
 Depth: One inch below adjacent road surface

Indiana tie card references:
 IN02_T18NR2W09_80 IN02_T18NR2W10_72
 IN02_T18NR2W16_08 IN02_T18NR2W15_00

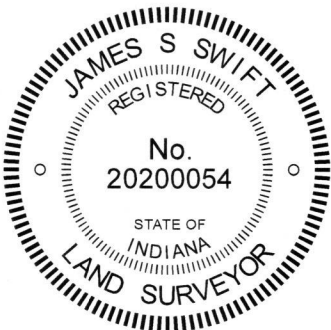
CORNER WITNESS DETAIL

SCALE 1" = 50'



- A - Boone County witness mark, flush, 37.9'
- B - Boone County witness mark, flush, 40.1'
- C - Mag nail set in E. side power pole, 2' a.g., 62.5'
- D - Mag nail set in S.E. side power pole, 2' a.g., 30.0'

The Harrison monument was set over a stone found.
 A BCS record dated April 18-19, 1870 states, with respect to this corner, "Reestab from stump of Beech. Set two rocks. One rock 10.9. 5 1/2. Top rock 11.9.8 +." A BCS tie card dated August 23, 1967 states "Stone Located - 10" RRR N. of Rock."
 This corner was excavated on September 18, 2019. Prior to excavation, a 5/8 inch rebar was found at 1 inch deep in the gravel road intersection. Excavation revealed a vertical section of railroad rail found at 5 inches deep. The rebar had been against the southwest edge of the rail. Excavation also revealed a wood hub found approximately 10 inches north of the rail, also at 5 inches deep. Further excavation revealed the lower stone described in the 1870 record at 30 inches deep. The stone had a distinct etched "+" mark on the top, slightly north of the top center of the stone. The stone measured 10 inches N-S by 9 inches E-W by approximately 5 inches thick. The stone was fully embedded in the clay layer below the road. The bottom of the road bed was found to be at 21 inches deep. Hence, the upper rock, being 11 inches tall, would have protruded into the bottom of the road bed by approximately 2 inches, a typical condition found at other corners throughout the county. The wording on the 1967 tie card implies that a 10 inch rail was set north of the stone found that day. However, the found rail was 30 inches long and the rail had been 10 inches north of the record lower rock. It is believed most likely that, on August 23, 1967, the top rock was found and removed. The lower rock was also apparently found but not removed. Sufficient clearance was evidently not available at that time to place a 30 inch rail (standard size) over the rock, so the rail was set north of the rock. The tie card clearly intends to call for the rock, not the rail, as marking the corner. The wood hub was over the rock. The hub may have been set in 1967 or later. The top, center of the record lower stone was held as marking the corner and a Harrison monument was set over this position.
 This corner was originally established as a wood post in 1820.



Kenneth E. Hedge
 Kenneth E. Hedge, County Surveyor

Jefferson Township

James S. Swift
 James S. Swift, IN LS 20200054
 September 25, 2019

Jackson Township

Section 9 T18N, R2W	Section 10 T18N, R2W
Section 16 T18N, R2W	Section 15 T18N, R2W

SECTION CORNER RECORD

SW 200-950

BOONE COUNTY SURVEYOR'S OFFICE

State Plane grid coordinates NAD83 (2011):
North: 1734712.56 East: 3074647.21 (U.S. survey feet)

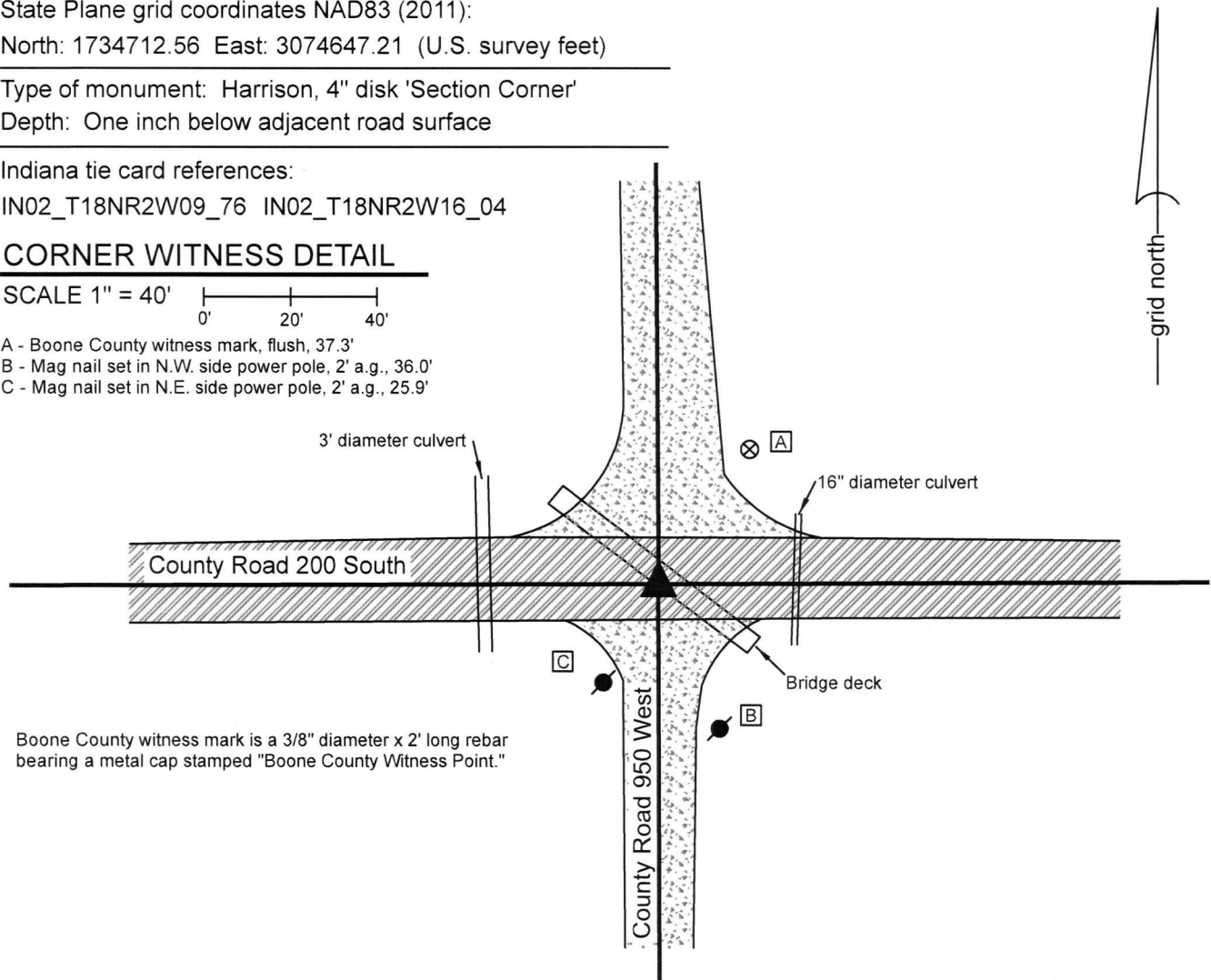
Type of monument: Harrison, 4" disk 'Section Corner'
Depth: One inch below adjacent road surface

Indiana tie card references:
IN02_T18NR2W09_76 IN02_T18NR2W16_04

CORNER WITNESS DETAIL

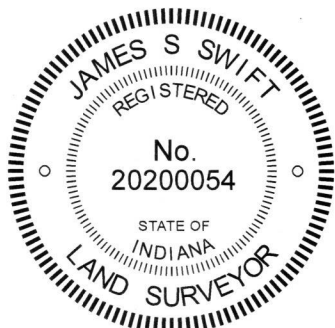
SCALE 1" = 40'
0' 20' 40'

- A - Boone County witness mark, flush, 37.3'
- B - Mag nail set in N.W. side power pole, 2' a.g., 36.0'
- C - Mag nail set in N.E. side power pole, 2' a.g., 25.9'



Boone County witness mark is a 3/8" diameter x 2' long rebar bearing a metal cap stamped "Boone County Witness Point."

The Harrison monument was set in place of a square shafted bolt spike found and a Mag nail found. A BCS record dated April 18-19, 1870 states, with respect to this corner, "Reest. drove stake under bridge" with reference calls to parts of a mill stone. No recent BCS tie cards were found referencing this corner. No large scale excavation was performed at this corner as the corner falls over a concrete bridge. Per the 1870 record, the corner has evidently fallen over a bridge for a long time. The current bridge is clearly younger than what would have been present in 1870. This corner was monumented on September 18, 2019. A Mag Nail was observed to be present at the center of the intersection of the roads in all four cardinal directions. The nail was removed and a bolt spike with square shaft 12 inches long was found at 4 inches deep, directly below the nail. Both monuments fit well with the local evidence of the corner in the form of the intersection of the roadways and also fit well with the relative positions of proximate corners. The nail and spike were accepted as representing the best available evidence of the corner, given the lack of possibility that more ancient evidence would be found. A Harrison monument was set in the position of the nail and spike. This corner was originally established as a wood post in 1820.



Kenneth E. Hedge
Kenneth E. Hedge, County Surveyor

James S. Swift
James S. Swift, IN LS 20200054
September 25, 2019

Jefferson Township

Section 9
T18N, R2W

Jackson Township

Section 16
T18N, R2W

SECTION CORNER RECORD

SW 200-1000

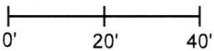
BOONE COUNTY SURVEYOR'S OFFICE

State Plane grid coordinates NAD83 (2011):
North: 1734704.74 East: 3072003.61 (U.S. survey feet)

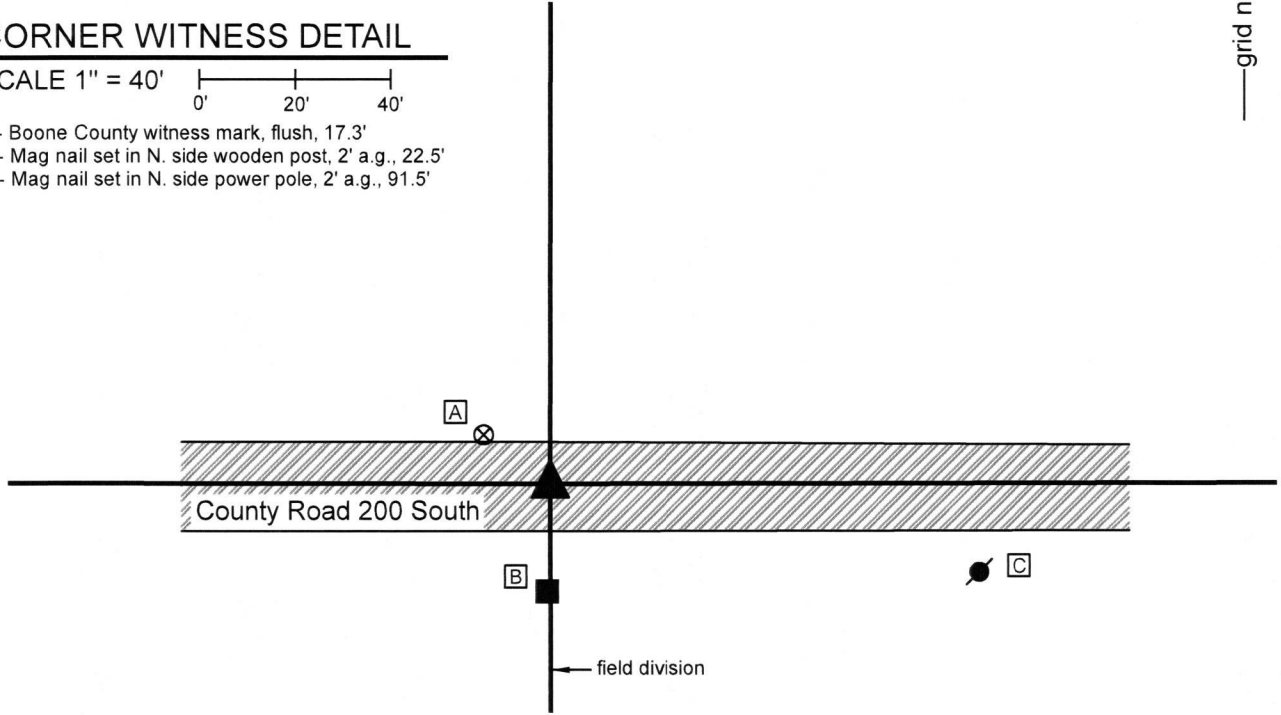
Type of monument: Harrison, 4" disk 'Section Corner'
Depth: One inch below adjacent road surface

Indiana tie card references:
IN02_T18NR2W08_80 IN02_T18NR2W09_72
IN02_T18NR2W17_08 IN02_T18NR2W16_00

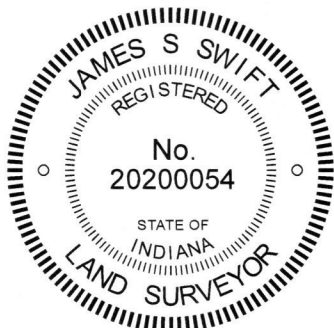
CORNER WITNESS DETAIL

SCALE 1" = 40' 

- A - Boone County witness mark, flush, 17.3'
- B - Mag nail set in N. side wooden post, 2' a.g., 22.5'
- C - Mag nail set in N. side power pole, 2' a.g., 91.5'




The Harrison monument was set over a stone found.
 A BCS record of April 18-19, 1870 states, with respect to this corner, "Reest. Set two rocks. One 7.5 12. 4 marked +. Top rock 11.8.9 marked +." A BCS tie card dated August 23, 1967 states "no stone."
 This corner was excavated on September 17, 2019. Prior to excavation, a mag nail was found at the surface of the road, slightly east of two posts on the south side of the road. Excavation revealed a vertical section of railroad rail found at 11 inches deep, directly below the nail. Further excavation revealed a stone found at 24 inches deep, west of the nail and rail. The stone appeared to be leaning toward the east, as found. As stood vertically, the stone measured 7 inches E-W by 6 inches N-S by 10 inches tall, 1 inch smaller in each dimension than what was reported in the 1870 record. No other stone was found below this stone, though fragments of a wood stake were found along the east edge of the stone. The found stone fit better with the posts on the south side of the road (one ancient, one newer) than did the rail. No explanation is offered as to why the lower stone was not found. The found stone was slightly smaller than called in the 1870 record though of the same proportions. The stone was accepted as being the best available evidence of the corner. The stone was left in place, as stood vertically, and a Harrison monument was set directly over the top, center of the stone. The nail and rail, both removed during excavation, had been 1.7 foot east and 0.7 foot south of the stone.
 This corner was originally established as a wood post in 1820.




 Kenneth E. Hedge, County Surveyor

Jefferson Township


 James S. Swift, IN LS 20200054
 September 25, 2019

Jackson Township

Section 8 T18N, R2W	Section 9 T18N, R2W
Section 17 T18N, R2W	Section 16 T18N, R2W

SECTION CORNER RECORD

SW 250-900

BOONE COUNTY SURVEYOR'S OFFICE

State Plane grid coordinates NAD83 (2011):

North: 1732092.72 East: 3077304.83 (U.S. survey feet)

Type of monument: Harrison, 4" disk 'Section Corner'

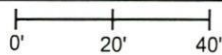
Depth: Six inches below adjacent gravel road surface

Indiana tie card references:

IN02_T18NR2W16_44 IN02_T18NR2W15_36

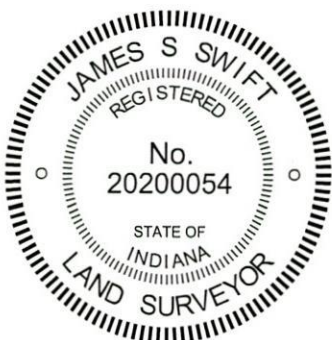
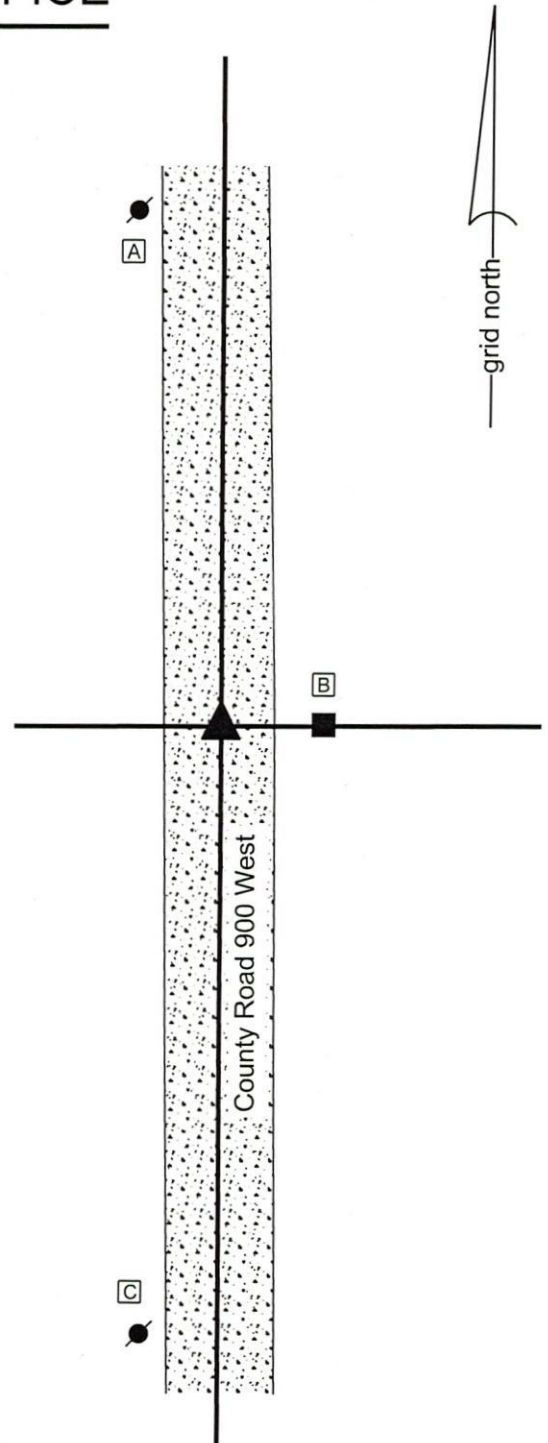
CORNER WITNESS DETAIL

SCALE 1" = 40'



- A - Mag nail set in S. side power pole, 2' a.g., 106.1'
- B - Mag nail set in W. side wood post, 2' a.g., 19.5'
- C - Mag nail set in N. side power pole, 2' a.g., 126.0'

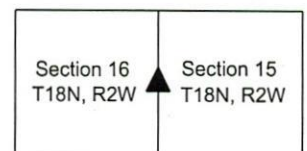
The Harrison monument was set in place of a stone found. A BCS record dated April 18-19, 1870 states, with respect to this corner, "Reest. from stumps of B. trees. Set a rock 13,11,8 marked +." No recent BCS tie cards were found referencing this corner. Excavation was performed at this corner on February 10, 2020. Prior to excavation, no metal monument or other modern survey monument was found marking the corner. Excavation in the center of the north-south roadway, opposite an ancient wood post on the east side of the road, revealed the stone described in the 1870 record at 10 inches deep. The stone was mostly vertical but appeared to be leaning slightly east. An etched "+" mark was clearly visible on the top of the leaning stone. The stone was removed from the road bed and measured to have been 11 inches N-S by 8 inches E-W by 13 inches tall. The height was measured as if the stone had been fully vertical. The stone had been embedded in the clay layer below the road, protruding 2 inches into the bottom of the road bed. The main body of the stone was held and a Harrison monument was set in the position of the top of the stone, as estimated as if the stone had been vertical. This corner was originally established as a wood post in 1820.



Kenneth E. Hedge
Kenneth E. Hedge, County Surveyor

James S. Swift
James S. Swift, IN LS 20200054
February 19, 2020

Jackson Township



SECTION CORNER RECORD

SW 250-1000

BOONE COUNTY SURVEYOR'S OFFICE

State Plane grid coordinates NAD83 (2011):
North: 1732067.45 East: 3072007.71 (U.S. survey feet)

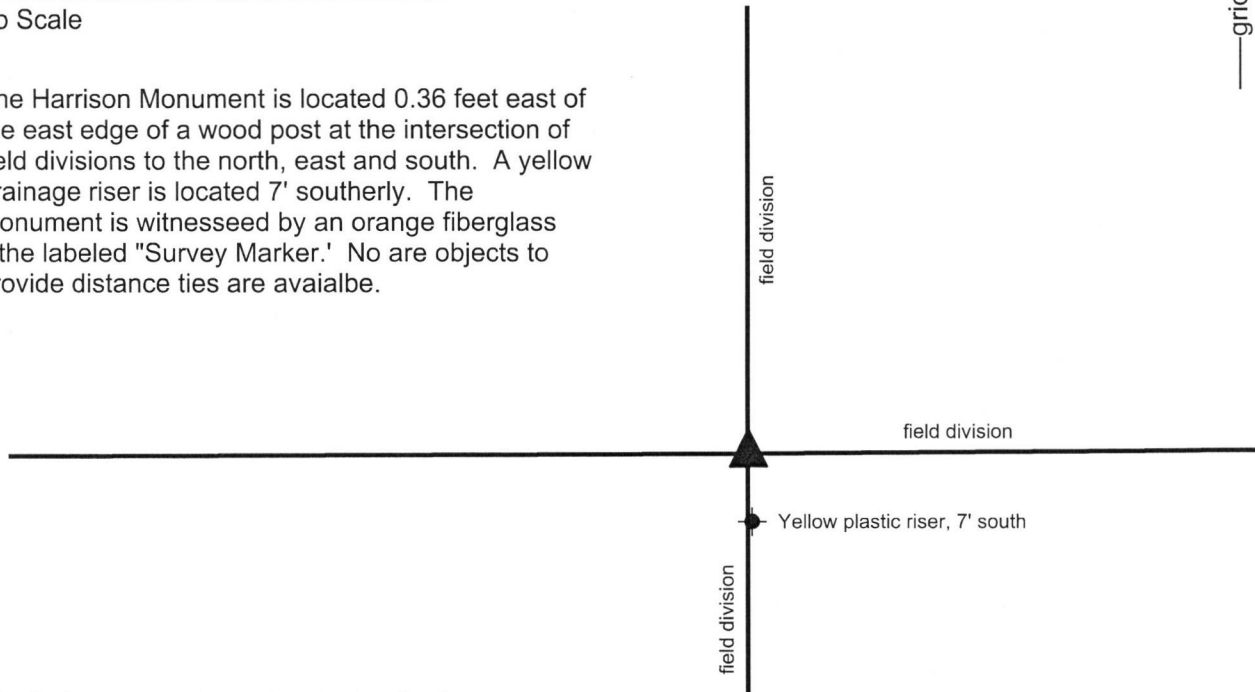
Type of monument: Harrison, 4" disk 'Section Corner'
Depth: Four inches above adjacent ground

Indiana tie card references:
IN02_T18NR2W17_44 IN02_T18NR2W18_36

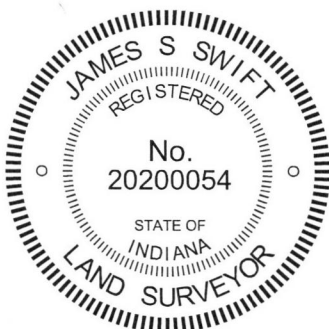
CORNER WITNESS DETAIL

No Scale

The Harrison Monument is located 0.36 feet east of the east edge of a wood post at the intersection of field divisions to the north, east and south. A yellow drainage riser is located 7' southerly. The monument is witnessed by an orange fiberglass lathe labeled "Survey Marker." No are objects to provide distance ties are avaiable.



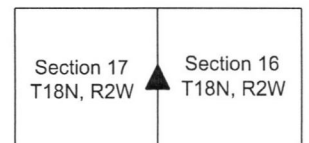
The Harrison monument was set over a stone found. A BCS record of April 18-19, 1870 states, with respect to this corner, "Reest. Set a rock 21.15.6 +." No recent BCS tie cards were found referencing this corner. Excavation on October 3, 2018 revealed the stone described in the 1870 record adjacent to a wood corner post at the intersection of field divisions to the north, south and east. The post itself has fencing cut off toward to the north, south and east. The stone is situated against the east edge of the post, approximately 10 inches below grade. The stone has a flat top with a deeply etched "+" mark on the top center. The east and west sides of the stone are vertical. With the top 8 inches of the stone exposed, it measured 6 inches east-west. The north and south sides of the stone are sloping. The full north-south dimension of the stone was not exposed and measured but through use of a probe, the stone was determined to be at least 13 inches N-S. Probing along the east edge of the stone revealed that it was approximately 20 inches tall along the east edge. The stone was accepted as being the same monument described in the 1870 record. It appeared to be undisturbed. The stone was held as marking the corner. The top 6 inches of the stone were encased in concrete and a Harrison monument was set directly above the etched + mark on the top of the stone. This corner was originally established as a wood post in 1820.



Kenneth E. Hedge
Kenneth E. Hedge, County Surveyor

James S. Swift
James S. Swift, IN LS 20200054
October 31, 2018

Jackson Township



SECTION CORNER RECORD

SW 300-900

BOONE COUNTY SURVEYOR'S OFFICE

State Plane grid coordinates NAD83 (2011):

North: 1729453.58 East: 3077325.86 (U.S. survey feet)

Type of monument: Harrison, 4" disk 'Section Corner'

Depth: One inch below adjacent road surface

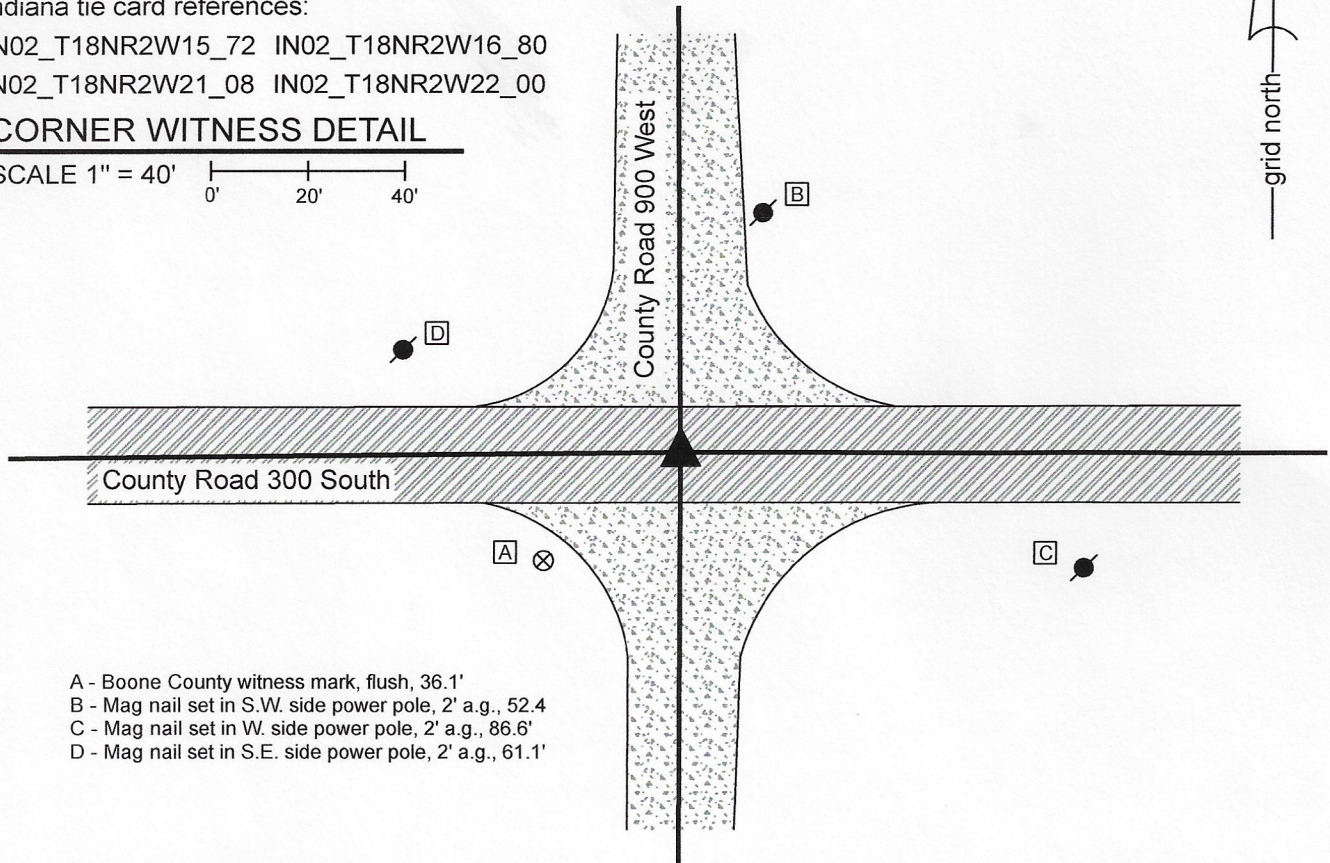
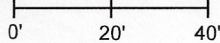
Indiana tie card references:

IN02_T18NR2W15_72 IN02_T18NR2W16_80

IN02_T18NR2W21_08 IN02_T18NR2W22_00

CORNER WITNESS DETAIL

SCALE 1" = 40'



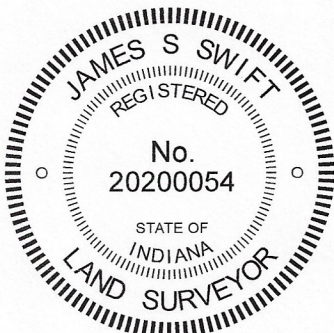
- A - Boone County witness mark, flush, 36.1'
- B - Mag nail set in S.W. side power pole, 2' a.g., 52.4
- C - Mag nail set in W. side power pole, 2' a.g., 86.6'
- D - Mag nail set in S.E. side power pole, 2' a.g., 61.1'

The Harrison monument was set over a stone found.

A BCS record dated April 18-19, 1870 states, with respect to this corner, "Reestablished from stump of Maple. Set Rock 13.10.5 +." A BCS tie card dated August 25, 1967 states "No stone."

This corner was excavated on June 26, 2020. Prior to excavation, a mag nail was found at the surface of the road at the intersection of the two county roads. Excavation revealed a vertical section of railroad rail found at 15 inches deep, directly below the mag nail found at the surface. Further excavation revealed a stone found at 19 inches deep, slightly east of the rail and nail. With the top 9 inches of the stone exposed, it measured 10 inches E-W by 5 inches N-S with a distinct etched "+" mark on top. Fragments of a wood stake were found along the south edge of the stone. The stone was accepted as being the same monument as described in the 1870 record and was held as marking the corner. The stone was left in place and a Harrison monument was set directly over the etched mark on the top of the stone. The nail and rail, both removed during excavation, had been 0.6 foot west of the mark on the stone. Though the 1967 tie card states simply, "No stone", it is believed most likely that the vertical section of railroad rail was set in association with the creation of that tie card. The call of "no stone" is erroneous, as the stone described in the 1970 record was present, adjacent to the rail.

This corner was originally established as a wood post in 1821.



Kenneth E. Hedge
Kenneth E. Hedge, County Surveyor

James S. Swift
James S. Swift, IN LS 20200054
July 7, 2020

Jackson Township

Section 16 T18N, R2W	Section 15 T18N, R2W
Section 21 T18N, R2W	Section 22 T18N, R2W

SECTION CORNER RECORD

SW 300-950

BOONE COUNTY SURVEYOR'S OFFICE

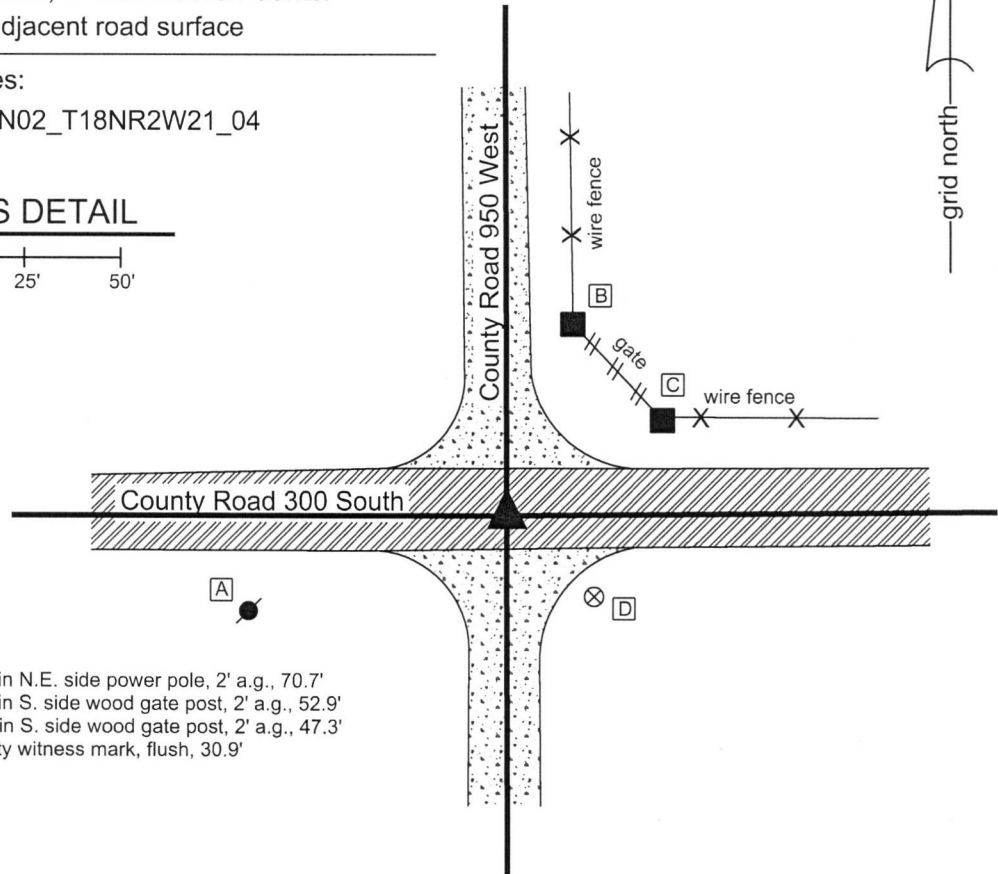
State Plane grid coordinates NAD83 (2011):
North: 1729428.57 East: 3074661.68 (U.S. survey feet)

Type of monument: Harrison, 4" disk 'Section Corner'
Depth: One inch below adjacent road surface

Indiana tie card references:
IN02_T18NR2W16_76 IN02_T18NR2W21_04

CORNER WITNESS DETAIL

SCALE 1" = 50'
0' 25' 50'



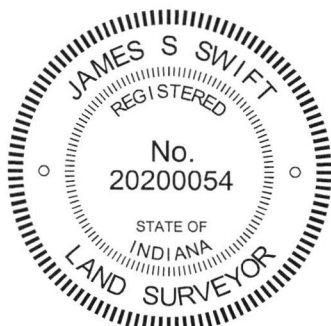
- A - Mag nail set in N.E. side power pole, 2' a.g., 70.7'
- B - Mag nail set in S. side wood gate post, 2' a.g., 52.9'
- C - Mag nail set in S. side wood gate post, 2' a.g., 47.3'
- D - Boone County witness mark, flush, 30.9'

The Harrison monument was set over a stone found.

A BCS record dated April 18-19, 1870 states, with respect to this corner, "Reest from both stumps. Set two rocks. One Rock 9.4.7 +. Top Rock 13.12.8 +." No recent BCS tie cards were found referencing this corner.

Excavation was performed at this corner on September 27, 2018. Prior to excavation, a Mag nail was found 3 inches deep in a small hole in the asphalt near the center of the intersection of the two county roads. Excavation revealed no further evidence below the mag nail but did reveal a stone found at 15 inches deep, southeast of the nail. The stone had a distinct "+" mark etched on top. With the top 9 inches of the stone exposed, it measured 12 inches N-S by 8 inches E-W. The east, west and south sides of the stone were vertical while the north side of the stone sloped down more gradually. The "+" mark was near the south edge of the stone. Fragments of a wood stake were also found along the south edge of the stone. Probing along the south edge indicated that another stone is situated below the exposed stone. These stones were accepted as being the same monuments called in the 1870 record and were held as marking the corner. A Harrison monument was set directly over the "+" mark on the upper stone. The Mag nail, removed during excavation, had been 1.0 foot north and 1.6 feet west of the mark on the stone.

This corner was originally established as a wood post in 1820.



Kenneth E. Hedge
Kenneth E. Hedge, County Surveyor

James S. Swift
James S. Swift, IN LS 20200054
October 10, 2018

Jackson
Township

Section 16
T18N, R2W

Section 21
T18N, R2W

SECTION CORNER RECORD

SW 300-1000

BOONE COUNTY SURVEYOR'S OFFICE

State Plane grid coordinates NAD83 (2011):

North: 1729427.48 East: 3072005.57 (U.S. survey feet)

Type of monument: Harrison, 4" disk 'Section Corner'

Depth: One inch below adjacent road surface

Indiana tie card references:

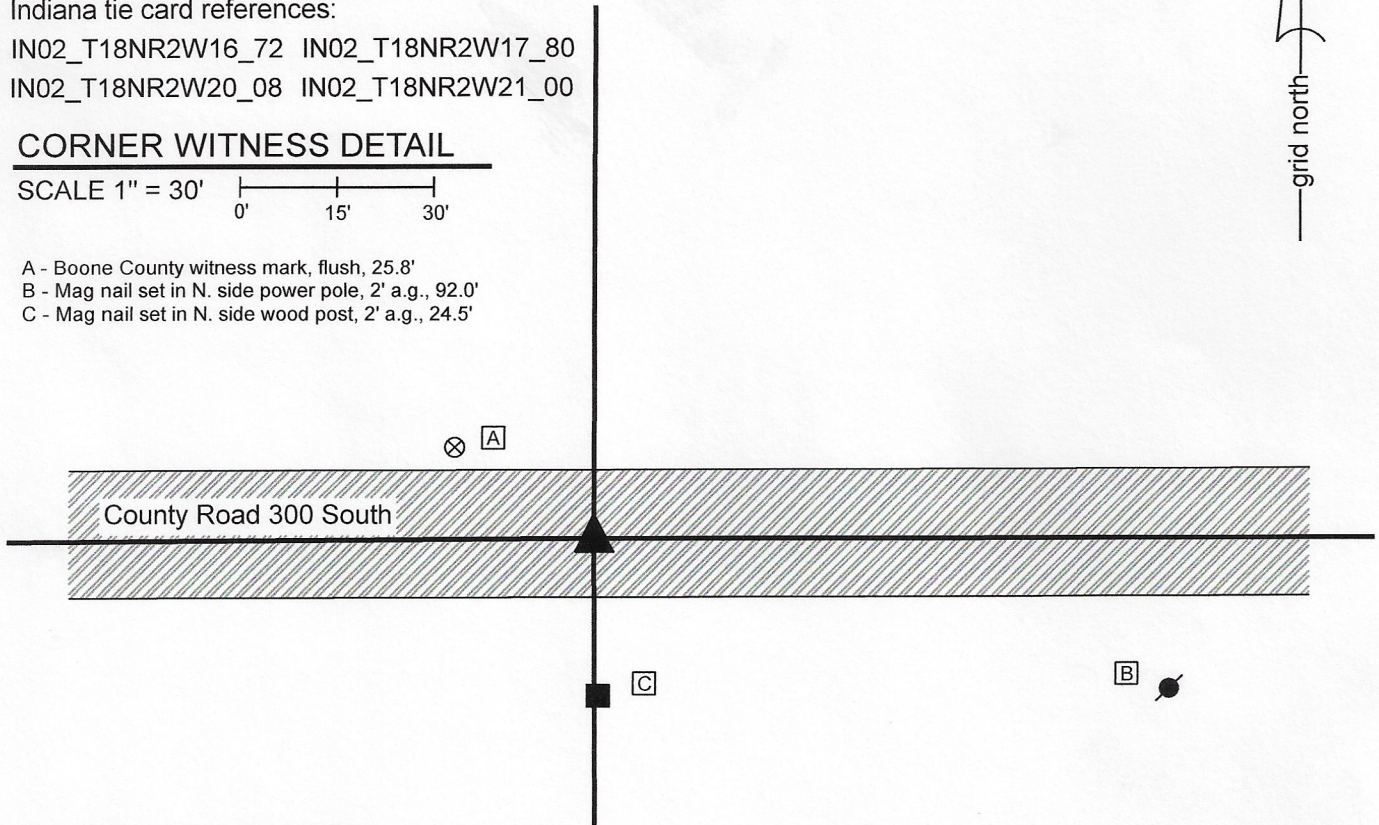
IN02_T18NR2W16_72 IN02_T18NR2W17_80

IN02_T18NR2W20_08 IN02_T18NR2W21_00

CORNER WITNESS DETAIL

SCALE 1" = 30'
0' 15' 30'

- A - Boone County witness mark, flush, 25.8'
- B - Mag nail set in N. side power pole, 2' a.g., 92.0'
- C - Mag nail set in N. side wood post, 2' a.g., 24.5'

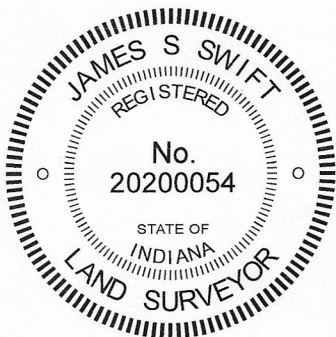


The Harrison monument was set over a stone found.

A BCS record dated April 18-19, 1870 states, with respect to this corner, "A rock that was set from stake where I run road." A BCS tie card dated August 25, 1967 states "No stone."

This corner was excavated on June 25, 2020. Prior to excavation, a mag nail with washer was found at 3 inches below the surface of the road. Excavation revealed a vertical section of railroad rail found at 12 inches deep, directly below the mag nail. A rotten, but generally intact 2 inch by 2 inch wood hub was found at 12 inches deep, slightly south and east of the rail. Further excavation revealed a stone found at 19 inches deep, below the wood hub. The stone was found to be 8 inches E-W by 8 inches N-S by 8 inches tall. The stone was embedded in the clay layer below the road bed, protruding 2 inches into the bottom of the road bed. No specific marks were observed on the stone but it was oriented such that it had a clear high point at the top, center. The stone, being oriented in cardinal directions with a distinct high point and embedded in the clay layer below the road, matched the characteristics of other stones found throughout county for which the record reference is "a rock (or stone) that was set." The stone was accepted as the best available evidence of the corner. The stone was left in place and a Harrison monument was set directly over the top, center and high point of the stone. The nail and rail, both removed during excavation, had been 1.1 foot north and 0.6 foot west of the top, center of the stone. Though the 1967 tie card states simply, "No stone", it is believed most likely that the vertical section of railroad rail was set in association with the creation of that tie card. The call of "no stone" is erroneous, as a stone was present, slightly south and east of the rail.

This corner was originally established as a wood post in 1820.



Kenneth E. Hedge

 Kenneth E. Hedge, County Surveyor

James S. Swift

 James S. Swift, IN LS 20200054
 July 7, 2020

Jackson Township

Section 17 T18N, R2W	Section 16 T18N, R2W
Section 20 T18N, R2W	Section 21 T18N, R2W