

# SECTION CORNER RECORD

SW 250-300

## BOONE COUNTY SURVEYOR'S OFFICE

State Plane grid coordinates NAD83 (2011):

North: 1732187.17 East: 3108988.35 (U.S. survey feet)

Type of monument: 5/8" Rebar with metal cap

Depth: Fourteen inches below adjacent ground

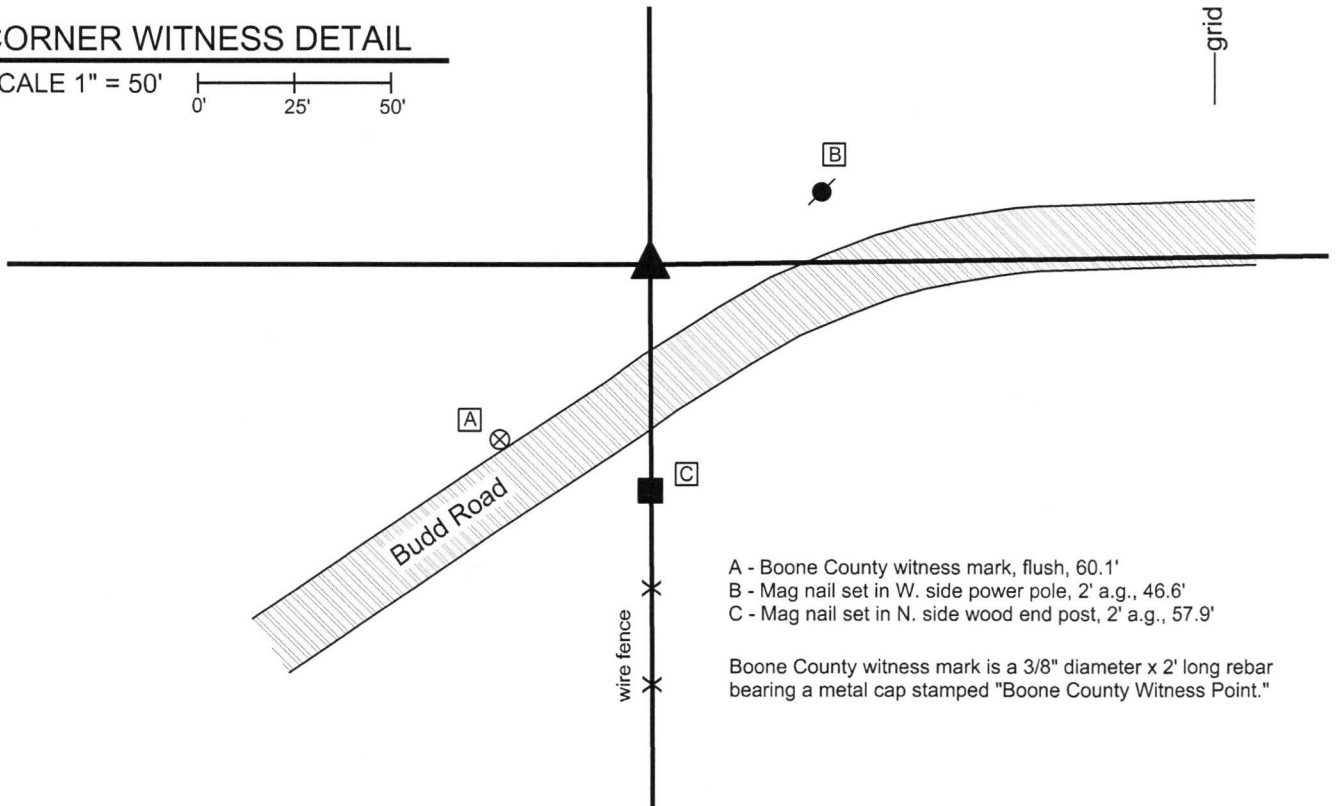
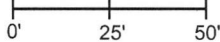
Indiana tie card references:

IN02\_T18NR1W16\_44 IN02\_T18R1W15\_36



### CORNER WITNESS DETAIL

SCALE 1" = 50'



- A - Boone County witness mark, flush, 60.1'
- B - Mag nail set in W. side power pole, 2' a.g., 46.6'
- C - Mag nail set in N. side wood end post, 2' a.g., 57.9'

Boone County witness mark is a 3/8" diameter x 2' long rebar bearing a metal cap stamped "Boone County Witness Point."

The rebar was set at a calculated position.

A BCS record of August 8, 1882 states, with respect to this corner, "Reest by measurement from C and d in Sec. 16. Rock 20.18.18 + on top." No recent BCS tie cards were found referencing this corner.

No metal or other artificial monuments were found marking the corner. A probable position for the corner was computed by creating a theoretical intersection point of the prolongations of fences to the east and south. The fence to south exists between the corner approximately one-half mile south and an end post on the south side of Budd Road, 60 feet south of the subject corner. The fence to the east exists between the corner approximately one-half mile east of the subject corner and an end post approximately one-quarter mile east of the subject corner. The standing fence is considered more reliable evidence of the east-west section line than the short east-west section of Budd Road. Extensive probing and manual excavation in the vicinity of the probable position yielded no further evidence of the corner. The stone referenced in the 1882 record was not found. The probable position for the corner was held, based on the best available physical evidence of the relevant section lines. A 30 inch length of 5/8 inch diameter rebar was set at this position, buried 14 inches deep in a tilled field.

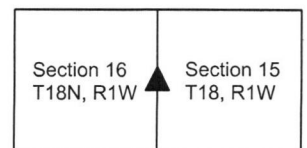
This corner was originally established as a wood post in 1820.



*Kenneth E. Hedge*  
Kenneth E. Hedge, County Surveyor

*James S. Swift*  
James S. Swift, IN LS 20200054  
March 23, 2017

Center Township



# SECTION CORNER RECORD

SW 250-400

## BOONE COUNTY SURVEYOR'S OFFICE

State Plane grid coordinates NAD83 (2011):

North: 1732133.62 East: 3103653.88 (U.S. survey feet)

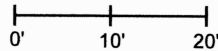
Type of monument: 5/8" diameter rebar with aluminum cap stamped 'Boone County Surveyor', 14" below grade

Indiana tie card references:

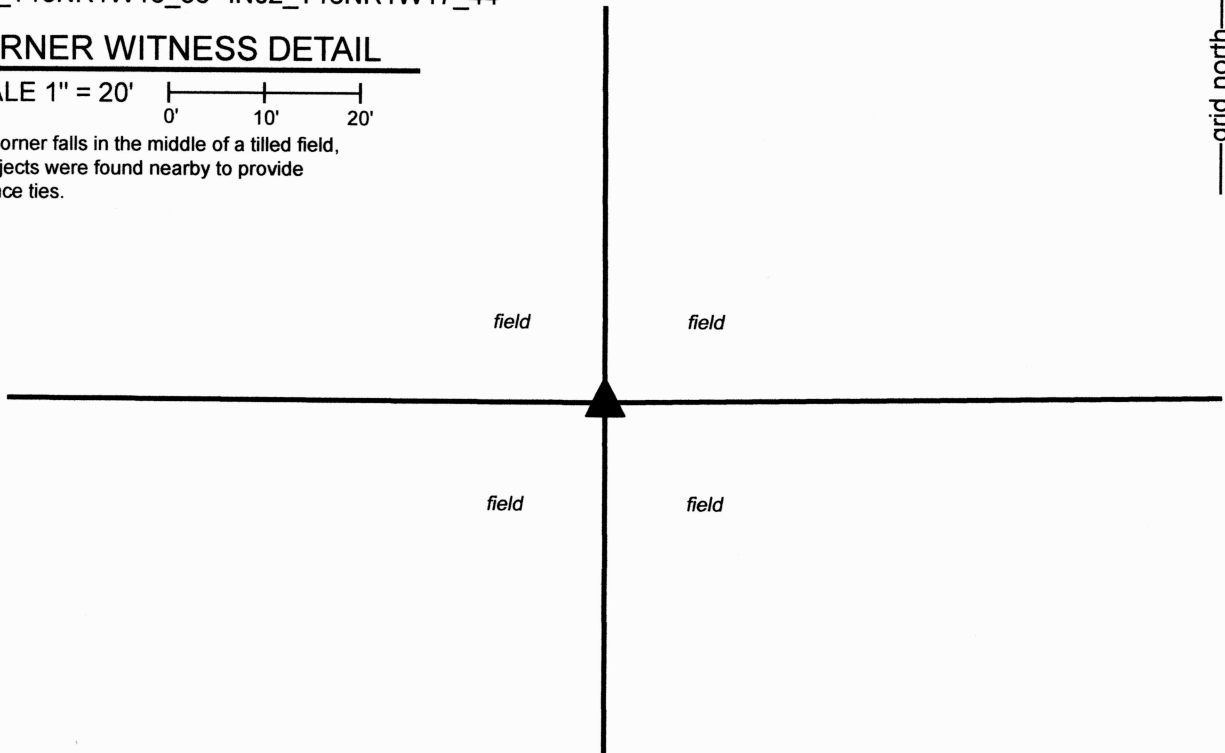
IN02\_T18NR1W16\_36 IN02\_T18NR1W17\_44

### CORNER WITNESS DETAIL

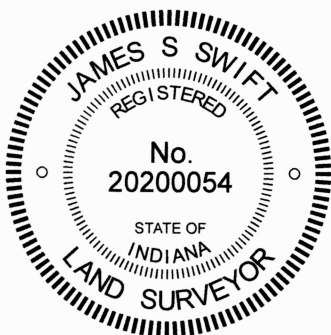
SCALE 1" = 20'



The corner falls in the middle of a tilled field, no objects were found nearby to provide distance ties.



The rebar with Boone County Surveyor cap was set at a calculated position. The only specific description of this corner found in the BCS Surveyor's Record beyond the original establishment of the corner in 1820 is a reference dated August 9, 1872, which states, "Found point, drove no stake, Elm is down." No references to this corner were found in private surveys recorded in the Office of the Boone County Recorder. The corner falls amidst a tilled field and no evidence of the corner was observed in the immediate vicinity. However, substantial evidence of the north line of the east half of the southwest quarter of Section 16 was found. An ancient wood corner post was found at the center of Section 16. The stone called for as marking that corner was not found, though several rocks were observed in the vicinity of the post. An old wood post, being but fragments of the old post surrounded by wire, though clearly identifiable as the old, occupied position of the corner, was held as the best evidence of the northwest corner of said east half-quarter section. The subject corner, being the northwest corner of the southwest quarter of Section 16, was established at the westerly prolongation of the line connecting these posts, at double the distance. This position fit quite well with the northwest and southwest corners of Section 16, falling 1.5 feet north and 3.5 feet east of the midpoint of the line connecting the section corners, as currently monumented. It is noted that the northwest corner of Section 16 has not been fully perpetuated as part of the current section corner perpetuation program. Probing and manual excavation in the vicinity of the corner on November 8, 2024 did not reveal any further evidence of the corner. The computed position was held as the corner. This position was monumented with a 24-inch length of 5/8-inch diameter rebar buried at 14 inches deep on November 8, 2024.



*Carol Cunningham*  
\_\_\_\_\_  
Carol Cunningham, County Surveyor

*James S. Swift*  
\_\_\_\_\_  
James S. Swift, IN LS 20200054  
November 13, 2024

Center Township

Section 17 T18N, R1W	Section 16 T18N, R1W
-------------------------	-------------------------

# SECTION CORNER RECORD

SW 300-300

## BOONE COUNTY SURVEYOR'S OFFICE

State Plane grid coordinates NAD83 (2011):

North: 1729546.06 East: 3109001.84 (U.S. survey feet)

Type of monument: Harrison, 4" disk 'Section Corner'

Depth: Four inches above adjacent grade

Indiana tie card references:

IN02\_T18NR1W16\_80 IN02\_T18NR1W15\_72

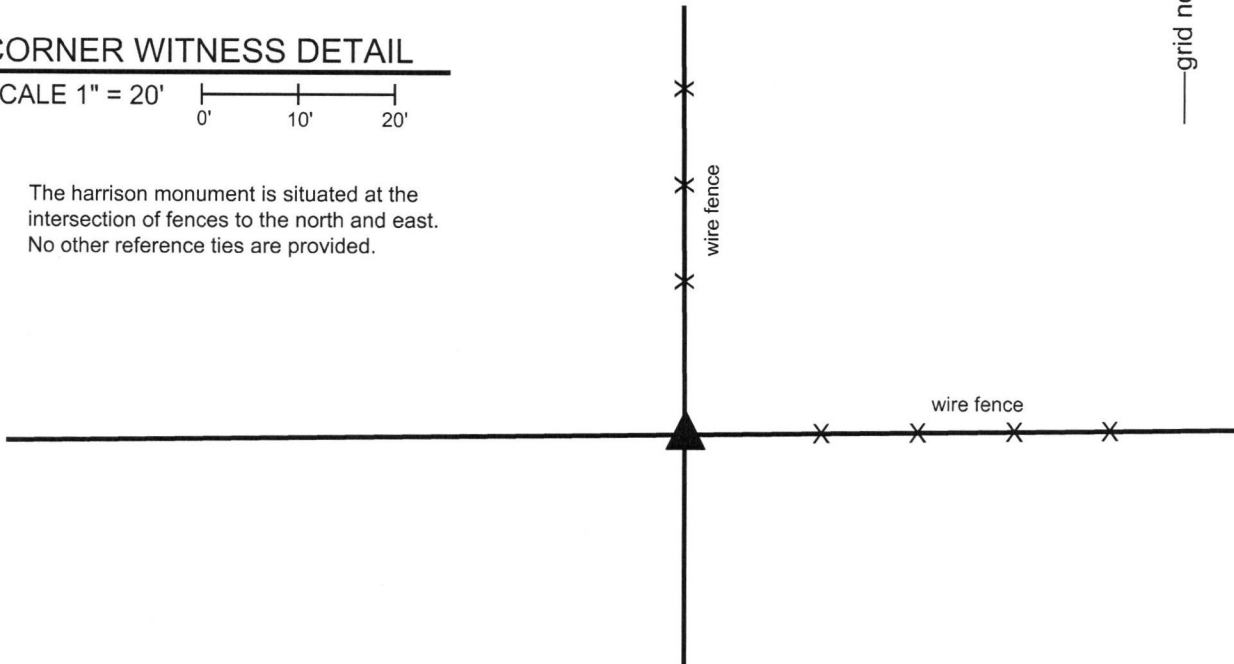
IN02\_T18NR1W21\_08 IN02\_T18NR1W22\_00



### CORNER WITNESS DETAIL

SCALE 1" = 20'

The Harrison monument is situated at the intersection of fences to the north and east. No other reference ties are provided.



The Harrison monument was set in place of a wood corner post found.

No specific descriptions of this corner were found in the BCS Surveyor's Record nor were any recent BCS tie cards found referencing this corner.

Substantial local evidence of the corner was found in September, 2016 in the form of an ancient wood corner post at the intersection of old, well established fences to the north and east. The position of the post fits well with respect to the relative positions of proximate corners. Manual excavation around the base of the post on September 29, 2016 yielded numerous rocks found, none of which appeared to have been set for the specific purpose of marking the corner. A rock to the south of the post was found on the surface of the ground in a horizontal position. A rock to the west of the post was found to have a distinct high point but the remainder of the rock was found to be quite massive with almost all of the rock buried. Neither of these rocks, nor any of the smaller rocks found in this vicinity, could be positively identified as marking the corner. The post was held as the best evidence of the original location of the corner. The post was removed during excavation and a Harrison monument was set in place of the post. The monument is anchored to the large rock to the west. The rock to the south was positioned such that it would provide protection for the monument from agricultural machinery working near the corner.

This corner was originally established as a wood post in 1820.

Kenneth E. Hedge, County Surveyor



Jefferson Township

Jackson Township

Marion Township

Section 16 T18N, R1W	Section 15 T18N, R1W
Section 21 T18N, R1W	Section 22 T18N, R1W

James S. Swift, IN LS 20200054

March 23, 2017



PHOTOGRAPHIC DOCUMENTATION

Date of photography: 9/27/2016-10/3/2016

The corner prior to excavation.  
View of the leaning corner post from the south.



The post removed from the ground and the hole where the post previously stood.



A vertical section of storm pipe, to be filled with concrete to support the Harrison monument.



The final monument, viewed from the south.



For details and documentation, refer to related sheet "Section Corner Record."



# SECTION CORNER RECORD

# SW 300-350

## BOONE COUNTY SURVEYOR'S OFFICE

State Plane grid coordinates NAD83 (2011):

North: 1729514.96 East: 3106323.28 (U.S. survey feet)

Type of monument: Harrison, 4" disk 'Section Corner'

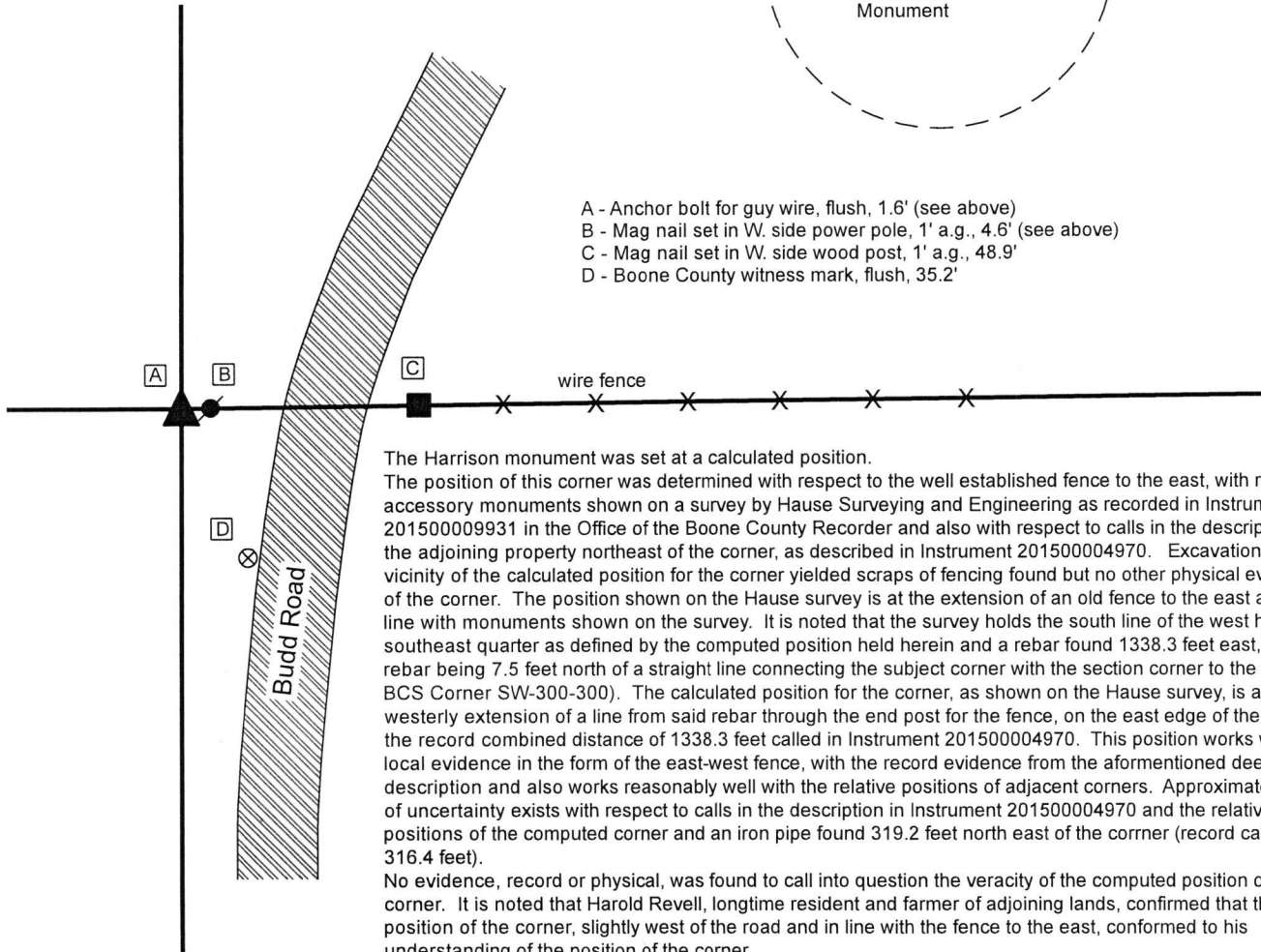
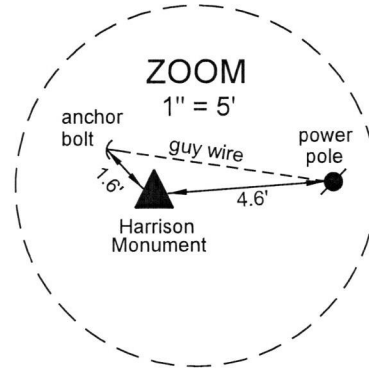
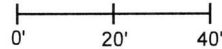
Depth: Flush with adjacent ground

Indiana tie card references:

IN02\_T16NR1W16\_76 IN02\_TN18R1W21\_04

### CORNER WITNESS DETAIL

SCALE 1" = 40'

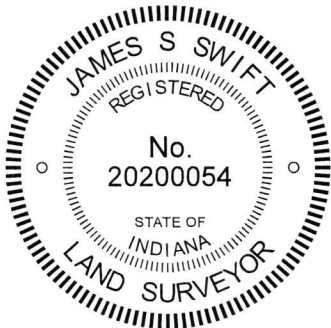


- A - Anchor bolt for guy wire, flush, 1.6' (see above)
- B - Mag nail set in W. side power pole, 1' a.g., 4.6' (see above)
- C - Mag nail set in W. side wood post, 1' a.g., 48.9'
- D - Boone County witness mark, flush, 35.2'

The Harrison monument was set at a calculated position. The position of this corner was determined with respect to the well established fence to the east, with respect to accessory monuments shown on a survey by Hause Surveying and Engineering as recorded in Instrument 201500009931 in the Office of the Boone County Recorder and also with respect to calls in the description for the adjoining property northeast of the corner, as described in Instrument 201500004970. Excavation in the vicinity of the calculated position for the corner yielded scraps of fencing found but no other physical evidence of the corner. The position shown on the Hause survey is at the extension of an old fence to the east and in line with monuments shown on the survey. It is noted that the survey holds the south line of the west half of the southeast quarter as defined by the computed position held herein and a rebar found 1338.3 feet east, said rebar being 7.5 feet north of a straight line connecting the subject corner with the section corner to the east (see BCS Corner SW-300-300). The calculated position for the corner, as shown on the Hause survey, is at the westerly extension of a line from said rebar through the end post for the fence, on the east edge of the road, at the record combined distance of 1338.3 feet called in Instrument 201500004970. This position works with the local evidence in the form of the east-west fence, with the record evidence from the aforementioned deed description and also works reasonably well with the relative positions of adjacent corners. Approximately 3 feet of uncertainty exists with respect to calls in the description in Instrument 201500004970 and the relative positions of the computed corner and an iron pipe found 319.2 feet north east of the corner (record call of 316.4 feet).

No evidence, record or physical, was found to call into question the veracity of the computed position of the corner. It is noted that Harold Revell, longtime resident and farmer of adjoining lands, confirmed that the position of the corner, slightly west of the road and in line with the fence to the east, conformed to his understanding of the position of the corner.

This corner was originally established as a wood post in 1821.



*Kenneth E. Hedge*  
 Kenneth E. Hedge, County Surveyor

*James S. Swift*  
 James S. Swift, IN LS 20200054

March 6, 2019

Center Township

Section 16  
T18N, R1W

Section 21  
T18N, R1W

# SECTION CORNER RECORD

# SW 300-400

## BOONE COUNTY SURVEYOR'S OFFICE

State Plane grid coordinates NAD83 (2011):

North: 1729483.13 East: 3103662.15 (U.S. survey feet)

Type of monument: 5/8" diameter rebar with aluminum cap stamped 'Boone County Surveyor', 14" below grade

Indiana tie card references:

IN02\_T18NR1W16\_72 IN02\_T18NR1W17\_80

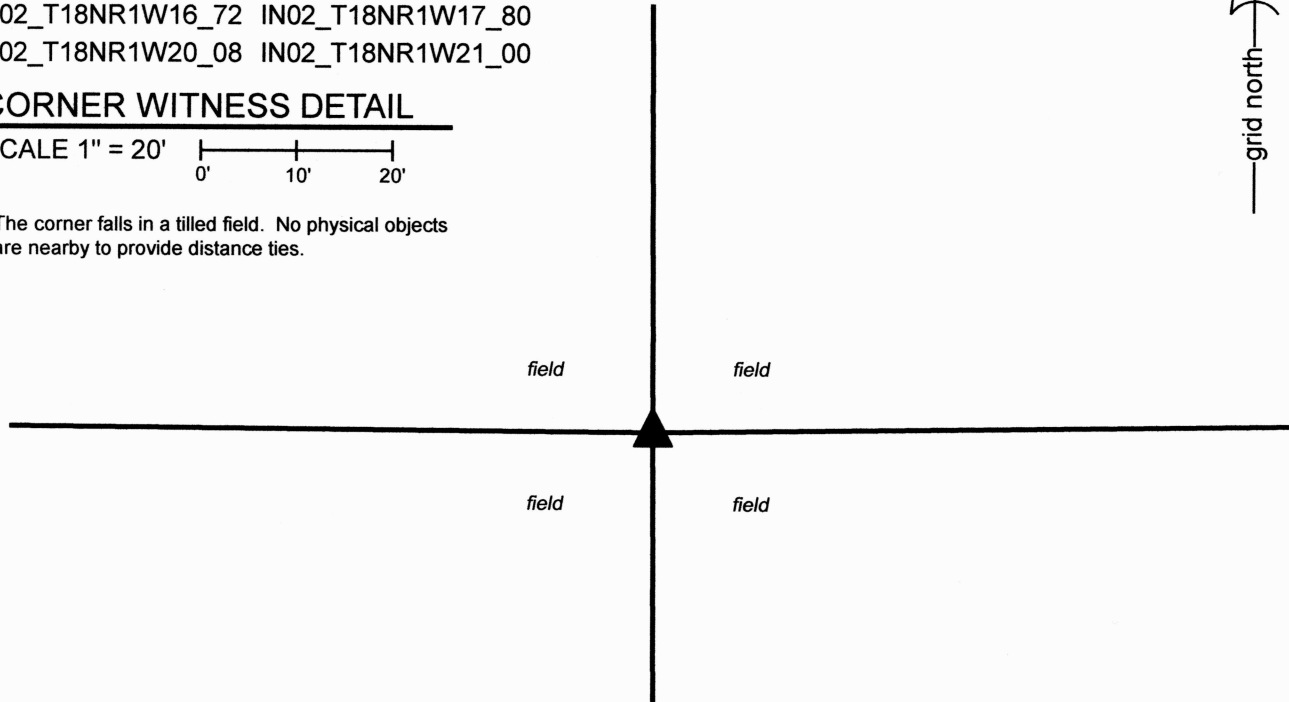
IN02\_T18NR1W20\_08 IN02\_T18NR1W21\_00



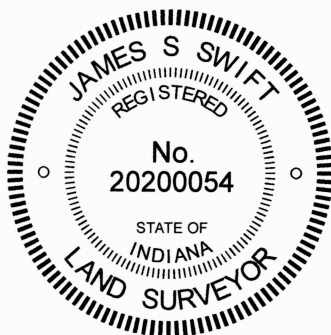
### CORNER WITNESS DETAIL

SCALE 1" = 20'

The corner falls in a tilled field. No physical objects are nearby to provide distance ties.



The rebar with Boone County Surveyor cap was set at a calculated position. No specific descriptions of this corner were found in the BCS Surveyor's Record beyond the original establishment of the corner as a wood post in 1820. However, the corner is referenced as the terminal point for measurements in the records for both Sections 17 and 20, which show dimensions to the corner from other corners to the west. The distance references for Section 17 are from 1872 and the distance references for Section 20 are from 1883. Though these records show slightly different actual dimensions by 3 links, they both show that the western portion of the line connecting the subject corner with the corner to the west (see BCS Corner SW 300-450) is 4 links longer than the eastern portion. No specific evidence of the subject corner is visible, as this corner falls amidst a continuous tilled field, but County Road 425 West provides clear evidence of the half-quarter section lines, approximately one quarter mile to the west. Given the lack of evidence in the immediate vicinity of the corner, a computed position was arrived at by extending the line from the southwest corner of Section 17 (BCS Corner SW 300-500) through the south quarter corner of Section 17 (BCS Corner SW 300-450) at a distance which is proportional to the distances shown on the 1872 and 1883 records, based on the distance between the south quarter corner of Section 17 and the center of County Road 425 West. It was observed that this position fell less than one foot south of a line projected west from the southeast corner of Section 16 (BCS Corner SW 300-300) through the south quarter corner of that section (BCS Corner SW 300-350) and worked reasonably well with the east-west distances in Section 16. Given the detail of the records in Section 17 and 20, we established the position of the corner per the corners between those sections, along with the relative distances shown on those records, with respect to the center of County Road 425 west. A railroad rail called for in a BCS tie card of 1968 was not found, hence was not used in computation of the corner. As the corner falls in a tilled field, a rebar was buried at 14 inches deep to avoid being disturbed by agricultural practices. The rebar was set on October 30, 2024. This corner was originally established as a wood post in 1820.



Carol Cunningham, County Surveyor

James S. Swift, IN LS 20200054  
November 13, 2024

