

SECTION CORNER RECORD

NW 900-800

BOONE COUNTY SURVEYOR'S OFFICE

State Plane grid coordinates NAD83 (2011):

North: 1793394.53 East: 3082457.39 (U.S. survey feet)

Type of monument: Harrison, 4" disk 'Section Corner'

Depth: Flush with adjacent ground

Indiana tie card references:

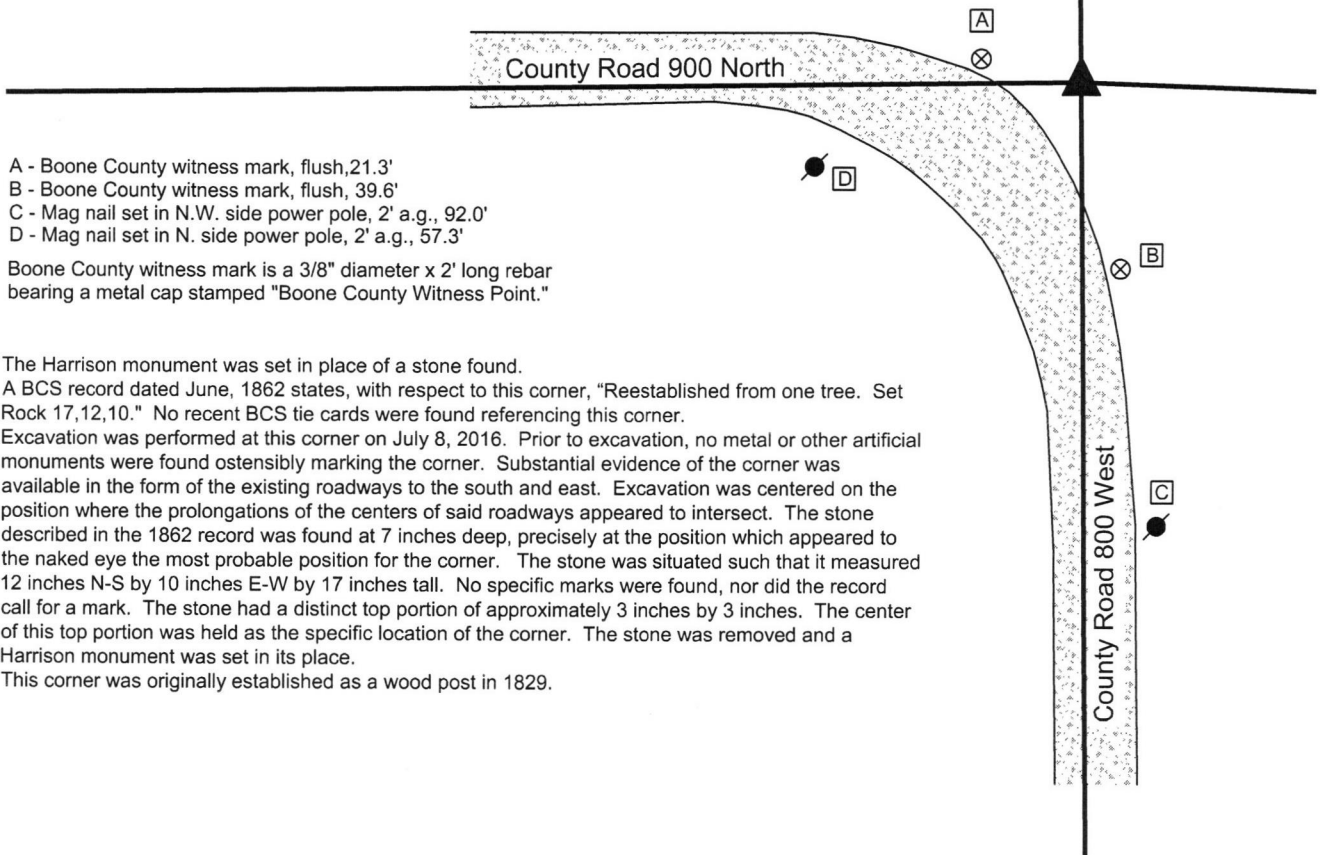
IN02_T20NR2W5_80 IN02_T20NR2W14_72

IN02_T20NR2W22_08 IN02_T20NR2W23_00



CORNER WITNESS DETAIL

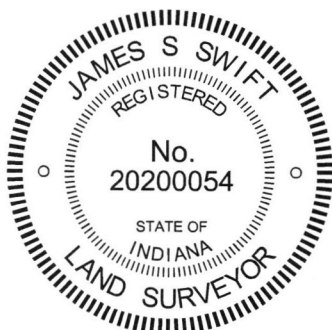
SCALE 1" = 40'



- A - Boone County witness mark, flush, 21.3'
- B - Boone County witness mark, flush, 39.6'
- C - Mag nail set in N.W. side power pole, 2' a.g., 92.0'
- D - Mag nail set in N. side power pole, 2' a.g., 57.3'

Boone County witness mark is a 3/8" diameter x 2' long rebar bearing a metal cap stamped "Boone County Witness Point."

The Harrison monument was set in place of a stone found. A BCS record dated June, 1862 states, with respect to this corner, "Reestablished from one tree. Set Rock 17,12,10." No recent BCS tie cards were found referencing this corner. Excavation was performed at this corner on July 8, 2016. Prior to excavation, no metal or other artificial monuments were found ostensibly marking the corner. Substantial evidence of the corner was available in the form of the existing roadways to the south and east. Excavation was centered on the position where the prolongations of the centers of said roadways appeared to intersect. The stone described in the 1862 record was found at 7 inches deep, precisely at the position which appeared to the naked eye the most probable position for the corner. The stone was situated such that it measured 12 inches N-S by 10 inches E-W by 17 inches tall. No specific marks were found, nor did the record call for a mark. The stone had a distinct top portion of approximately 3 inches by 3 inches. The center of this top portion was held as the specific location of the corner. The stone was removed and a Harrison monument was set in its place. This corner was originally established as a wood post in 1829.



Kenneth E. Hedge, County Surveyor

James S. Swift, IN LS 20200054
March 23, 2017

Sugar Creek Township

Section 15 T20N, R2W	Section 14 T20N, R2W
Section 22 T20N, R2W	Section 23 T20N, R2W

PHOTOGRAPHIC DOCUMENTATION

Date of photography: July 8, 2016

The stone as it was originally exposed.



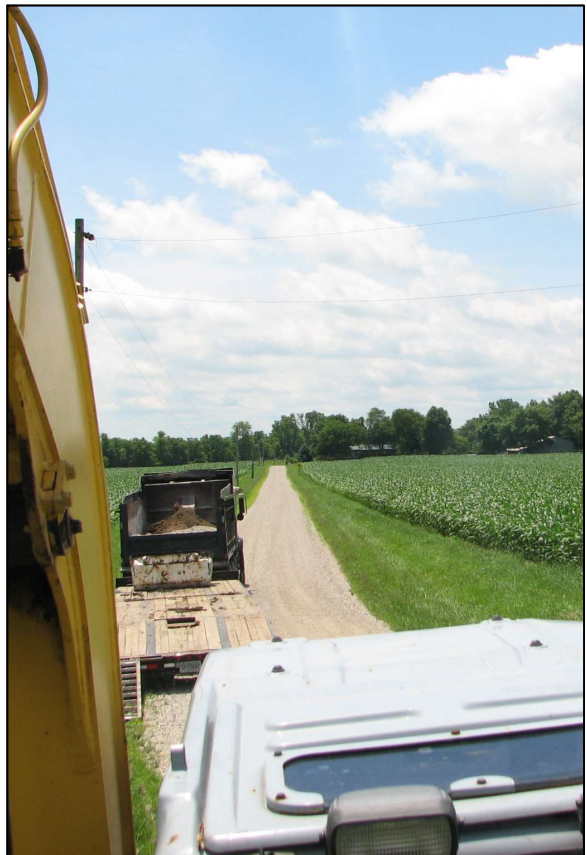
The stone more fully exposed.



View from approximately above the stone looking west along County Road 900 North.



View from approximately above the stone looking south along County Road 800 West.



For details and documentation, refer to related sheet "Section Corner Record."

SECTION CORNER RECORD

NW 900-850

BOONE COUNTY SURVEYOR'S OFFICE

State Plane grid coordinates NAD83 (2011):
North: 1793364.73 East: 3079797.63 (U.S. survey feet)

Type of monument: Harrison, 4" disk 'Section Corner'
Depth: Six inches below adjacent gravel road surface

Indiana tie card references:
IN02_T20NR2W15_76
IN02_T20NR2W22_04

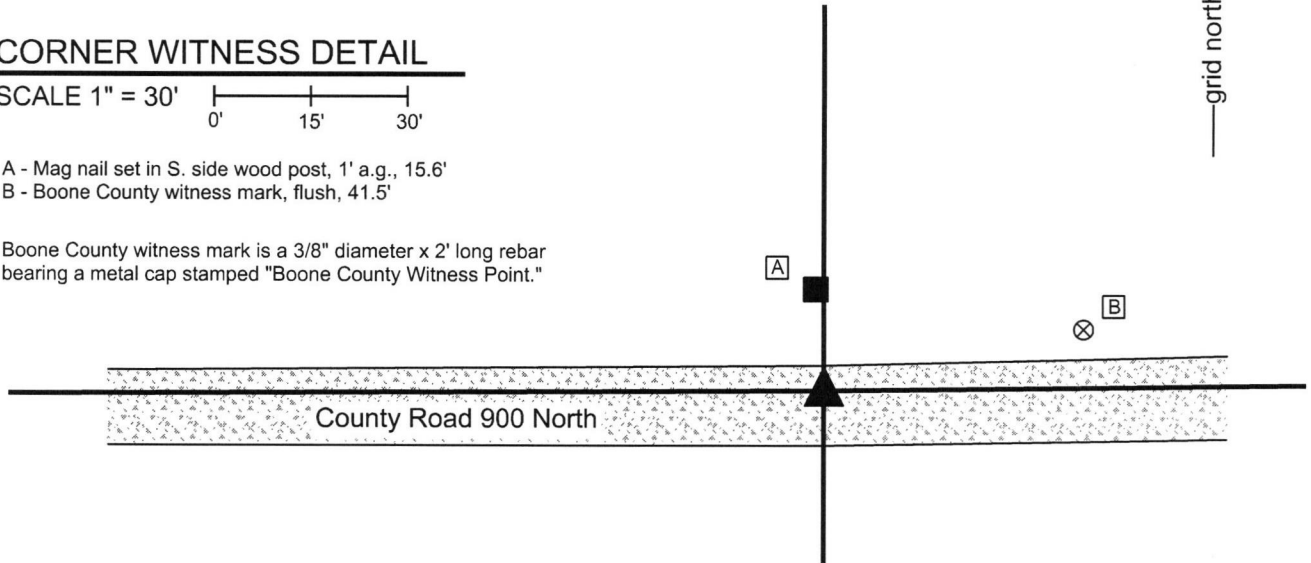


CORNER WITNESS DETAIL

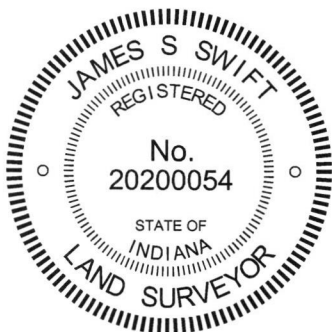
SCALE 1" = 30'
0' 15' 30'

- A - Mag nail set in S. side wood post, 1' a.g., 15.6'
- B - Boone County witness mark, flush, 41.5'

Boone County witness mark is a 3/8" diameter x 2' long rebar bearing a metal cap stamped "Boone County Witness Point."



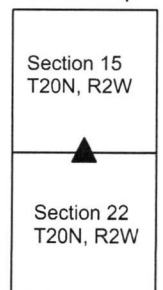
The Harrison monument was set over a stone found.
A BCS record dated August 30, 1872 states, with respect to this corner, "Rock, 24,16,13 +." No recent BCS tie cards were found referencing this corner.
Excavation was performed at this corner on July 5, 2016. Prior to excavation, a 5/8 inch diameter rebar was found at 3 inches below the surface of the gravel road, bent at the top, but with a straight, vertical shaft below the bend. Excavation revealed a large stone found at 15 inches deep. With the top 11 inches of the stone exposed, it measured 13 inches E-W by 11 inches N-W, was clearly much larger in the vertical dimension and appeared that it was likely larger yet in the horizontal dimensions. The stone had a distinct high point, but no specific marks were found. The position of the stone fit with local evidence of the corner in the form of the existing east-west roadway and an old end post on the north side of the road. The stone was held as marking the position of the corner. The top 6 inches of the stone were encased in concrete and a Harrison monument was set over the top, high point.
The rebar, removed during excavation, had been 1.0 foot south and 1.0 foot west of the top, high point of the stone.
This corner was originally established as a wood post in 1829.



Kenneth E. Hedge
Kenneth E. Hedge, County Surveyor

James S. Swift
James S. Swift, IN LS 20200054
March 23, 2017

Sugar Creek Township



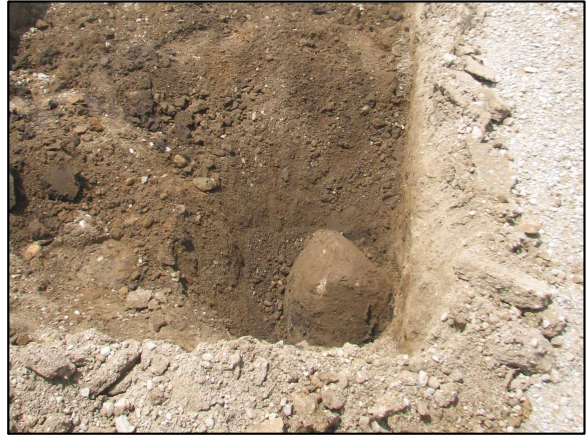
PHOTOGRAPHIC DOCUMENTATION

Date of photography: July 5, 2016

The stone as it was originally exposed.



The stone more fully exposed.



View from above the stone looking west along County Road 800 North.



View of the stone and the post on the north side of County Road 900 North.



For details and documentation, refer to related sheet "Section Corner Record."

SECTION CORNER RECORD

NW 900-900

BOONE COUNTY SURVEYOR'S OFFICE

State Plane grid coordinates NAD83 (2011):
North: 1793352.60 East: 3077140.94 (U.S. survey feet)

Type of monument: Harrison, 4" disk 'Section Corner'
Depth: Six inches below adjacent gravel road surface

Indiana tie card references:

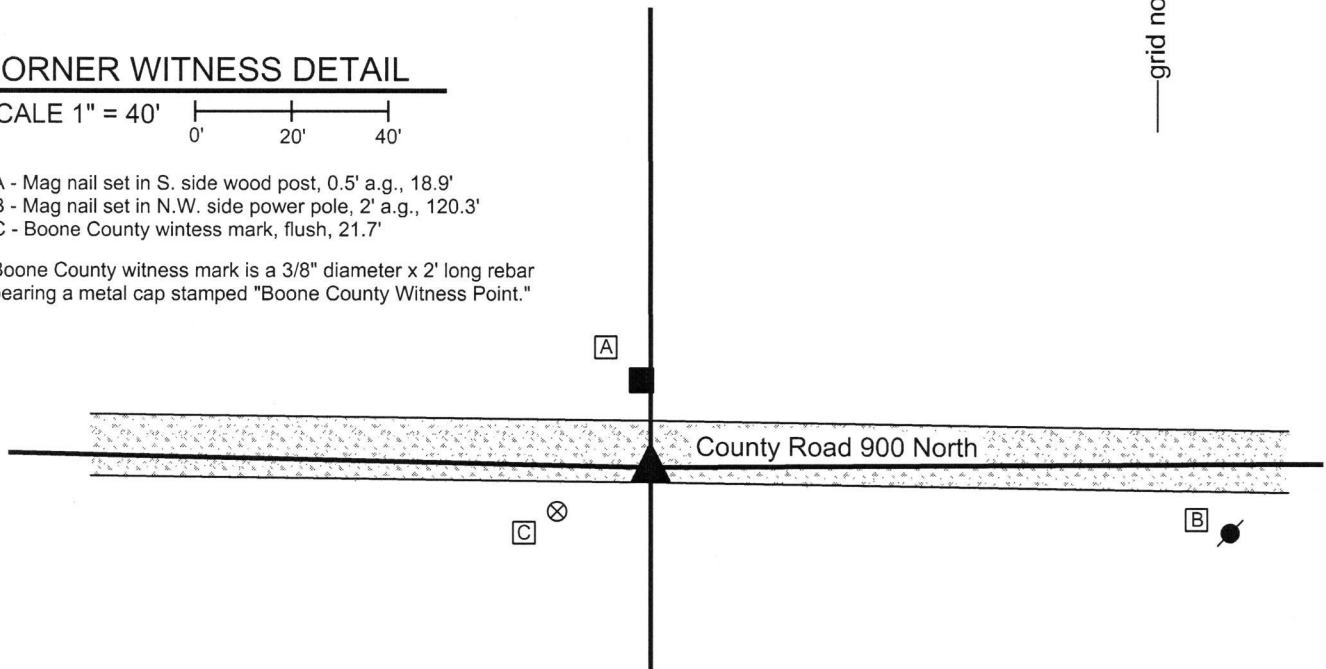
IN02_T20NR2W16_80 IN02_T20NR2W15_72
IN02_T20NR2W21_08 IN02_T20NR2W22_00

CORNER WITNESS DETAIL

SCALE 1" = 40'
0' 20' 40'

- A - Mag nail set in S. side wood post, 0.5' a.g., 18.9'
- B - Mag nail set in N.W. side power pole, 2' a.g., 120.3'
- C - Boone County witness mark, flush, 21.7'

Boone County witness mark is a 3/8" diameter x 2' long rebar bearing a metal cap stamped "Boone County Witness Point."



The Harrison monument was set over a stone found.

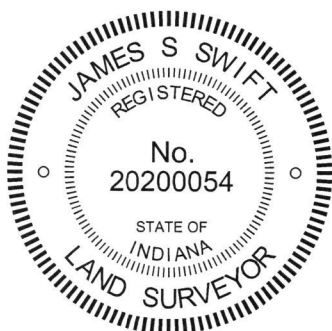
A BCS record dated March 29-31, 1858 references this corner as a Rock 12, 16, noting that the corner was "Reestablished from old Wit tree." No recent BCS tie cards were found referencing this corner.

Excavation was performed at this corner on June 24, 2016. Prior to excavation, a 5/8 inch diameter rebar was found at 1 inch deep in the gravel road, slightly bent at the top. Excavation revealed the rock described in the 1858 record at 13 inches deep.

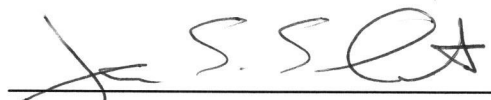
With the top 6 inches of the stone exposed, it measured 12 inches NW-SE and 15 inches NE-SW, and appeared substantially larger in the vertical dimension. The stone was embedded in the clay layer below the road, protruding slightly into the bottom of the road bed. The top of the stone, as found, was not oriented in cardinal directions. It is noted that the adjacent corner 1/2 mile to the east, set during the same survey, was also not oriented in cardinal directions. No distinct marks were found on the stone nor does it have a distinct high point. The two dimensions measured on the stone match closely with the 1858 record and the stone was held as marking the corner. The center of the top of the stone was held as the specific position of the corner and a Harrison monument was set over this point. The top of the stone was embedded in concrete.

The rebar found prior to excavation and removed during excavation had been 0.5 foot north and 2.2 feet west of the top, center of the stone.

This corner was originally established as a wood post in 1829.




Kenneth E. Hedge, County Surveyor


James S. Swift, IN LS 20200054
March 23, 2017

Sugar Creek Township

Section 16 T20N, R2W	Section 15 T20N, R2W
Section 21 T20N, R2W	Section 22 T20N, R2W

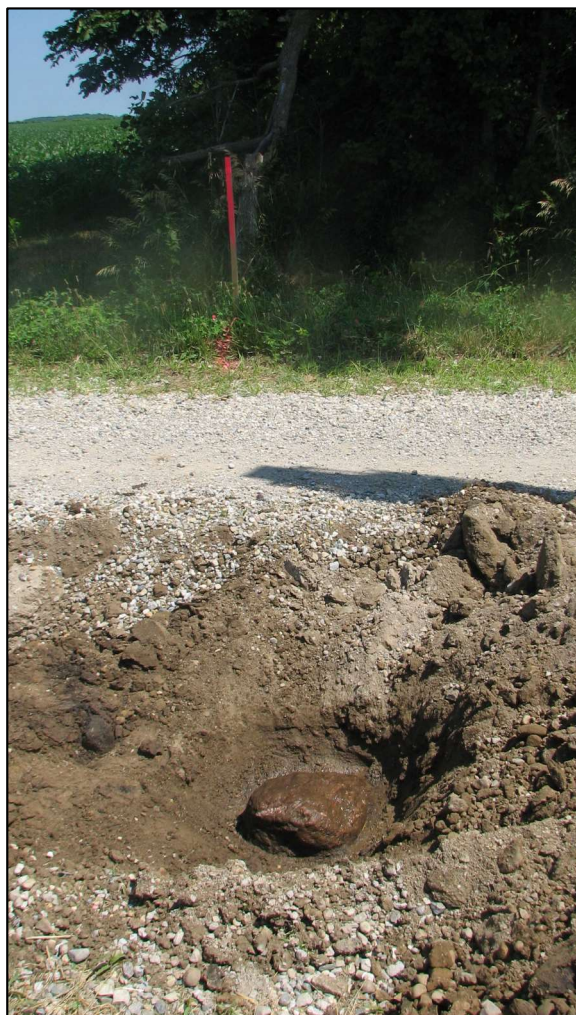
PHOTOGRAPHIC DOCUMENTATION

Date of photography: June 24, 2016

The stone as it was originally exposed.



View looking across the stone to the post on the north side of County Road 900 North.



The stone from above, washed.



For details and documentation, refer to related sheet "Section Corner Record."

SECTION CORNER RECORD

NW 950-900

BOONE COUNTY SURVEYOR'S OFFICE

State Plane grid coordinates NAD83 (2011):

North: 1796020.92 East: 3077134.39 (U.S. survey feet)

Type of monument: Harrison, 4" disk 'Section Corner'

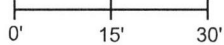
Depth: Three inches above adjacent ground

Indiana tie card references:

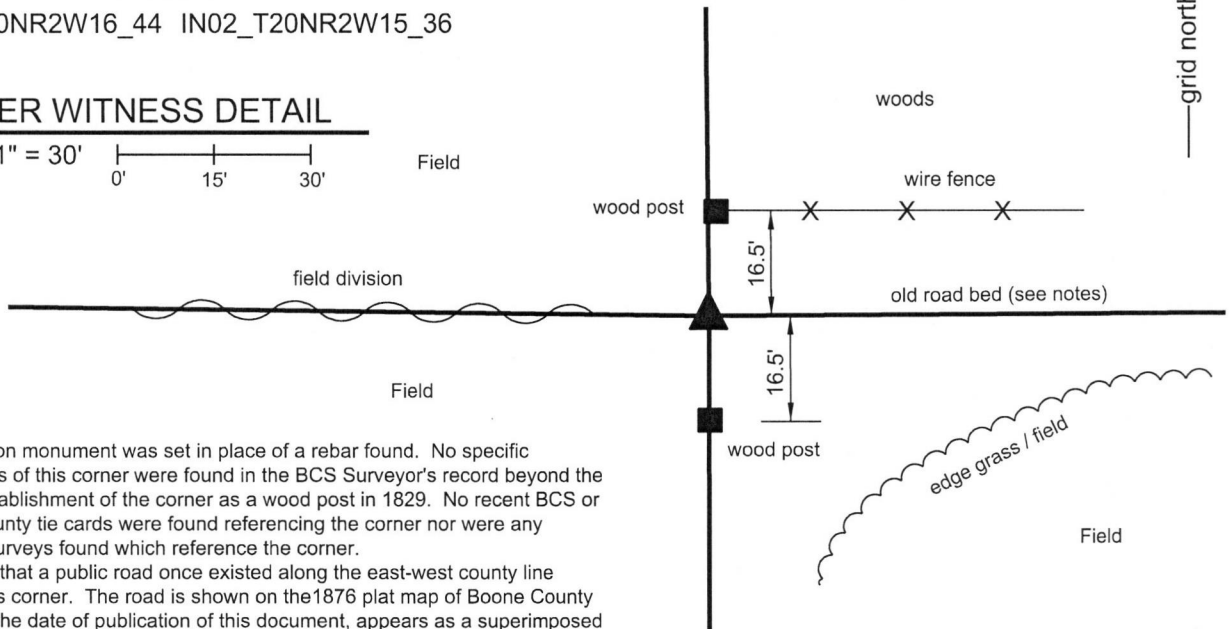
IN02_T20NR2W16_44 IN02_T20NR2W15_36

CORNER WITNESS DETAIL

SCALE 1" = 30'

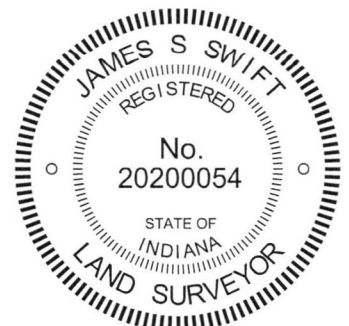


Field



The Harrison monument was set in place of a rebar found. No specific descriptions of this corner were found in the BCS Surveyor's record beyond the original establishment of the corner as a wood post in 1829. No recent BCS or Clinton County tie cards were found referencing the corner nor were any recorded surveys found which reference the corner.

It is known that a public road once existed along the east-west county line through this corner. The road is shown on the 1876 plat map of Boone County and, as of the date of publication of this document, appears as a superimposed line on Google Maps. Evidence of the road was found in the form of a gravel road bed which is grown over but easily exposed upon minor excavation. Wood posts were found at 2 rods apart from each other, evidently along the north and south extents of the old road right-of-way. The northerly post had standing fencing to the north and east and cut-off toward the west. The southerly post had no standing fencing attached to it, but evidence of fencing was visible cut to the south, east and west. The found rebar was situated in the old gravel road bed, equidistant from the two ancient posts to the north and south, respectively, one rod from each post. The position of the rebar fit well with the relative positions of the section corner 1/2 mile south (see Corner NW 900-900) and a post marking evidence of the 1/16 corner situated 1/4 mile south of the subject corner. The rebar is also within two feet of being equidistant from said division corner to the south and evidence of the section corner to the north, located in Clinton County, evidenced by a mag nail in the center of an east-west road, in line with a post on the south side of the road. The two found posts were accepted as witness evidence of the corner and the rebar was accepted as marking the position of the corner. The rebar bore a yellow plastic cap with markings not sufficiently legible to determine to specific number stamped on the cap. The rebar was removed and replaced with a Harrison monument in the same position on October 24, 2018.



Kenneth E. Hedge
 Kenneth E. Hedge, County Surveyor

James S. Swift
 James S. Swift, IN LS 20200054
 November 28, 2018

Perry Township
 Clinton County
 Sugar Creek Twp
 Boone County

