

SECTION CORNER RECORD

NE 900-900

BOONE COUNTY SURVEYOR'S OFFICE

State Plane grid coordinates NAD83 (CORS96):

North: 1794361.35 East: 3171813.19 (U.S. survey feet)

Type of monument: Harrison, 4" disk 'Section Corner'

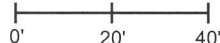
Depth: One inch below adjacent road surface

Indiana tie card references:

IN02_T20NR2E16_80 IN02_T20NR2E15_72

IN02_T20NR2E21_08 IN02_T20NR2E22_00

CORNER WITNESS DETAIL

SCALE 1" = 40' 

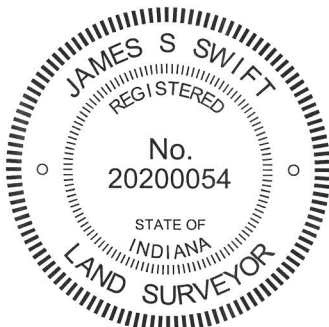
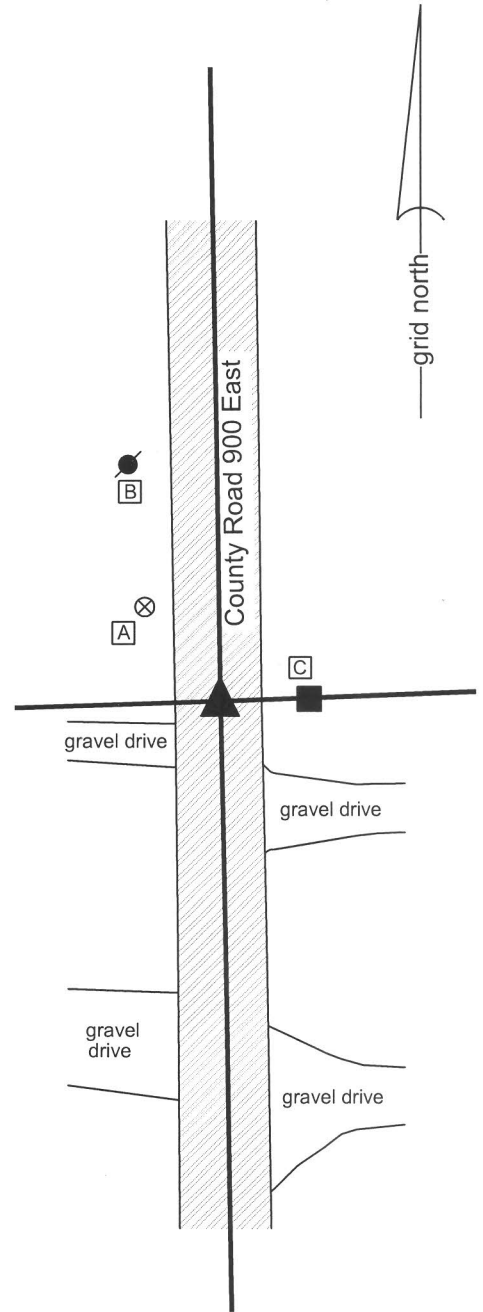
- A - Boone County witness mark, flush, 25.24'
- B - Mag nail set in S. side power pole, 2' a.g., 51.06'
- C - Mag nail set in N.W. corner wood post, 1.5' a.g., 16.29'

Boone County witness mark is a 3/8" diameter x 2' long rebar bearing a metal cap stamped "Boone County Witness Point."


The harrison monument was set in place of a vertical section of railroad rail found. A BCS record of February 17-18, 1869 states "Found from stump of Beech and stake. Reestablished set two rocks. One 9.8 by 6 in. marked +. Top rock 13.9.5 1/2 +." No recent BCS tie cards were found referencing this corner.

Excavation was performed at this corner on July 18, 2013. Prior to excavation, a railroad rail was found at 9 inches deep in a hole in the asphalt roadway. Excavation of an area approximately centered on the rail and extending 2.5 feet east, south and west and extending 3 feet north at the northwest corner of the hole and 1 foot north at the northeast corner of the hole (due to the presence of a phone line marked on the pavement) revealed no further evidence of the corner. The bottom of the road bed was found at 20 inches deep, which is substantially deeper than the grade of the surrounding land. No explanation is offered for this, as typically the depth of the road bed generally relates to the elevation of the surrounding ground. Excavation was performed to 30 inches deep, well into the clay layer below the road and probing was performed to another 2 feet deep in the immediate vicinity of the rail. The lack of documentation for the rail is problematic, as most rails set for corners in Boone County were set by representatives of this office. Some rails are believed to have been set by employees of Carl Anderson after he ceased being County Surveyor in 1972. It is known that a common practice of the crews which set the rails were to remove a stone, if found, and replace it with a rail. Without documentation it is not possible to know if a stone previously found and replaced with a rail, but that represents one possible explanation for why no stone was found. Another explanation relates to the deep road bed where previous experience would guide one to expect a shallow road bed, given the similar elevations of the road and the surrounding ground. Perhaps the stone was removed during excavation for the more substantial road bed, whenever and if, that may have happened. The rail fits with local evidence of the corner being in the center of the N-S roadway and in line with the old end post to the east. The rail was accepted as the best available evidence of the corner and replaced with a harrison monument in the same position.

This corner was originally established as a wood post in 1821.




 Kenneth E. Hedge, County Surveyor


 James S. Swift, IN LS 20200054
 February 5, 2015

Marion Township

Section 16 T20N, R2E	Section 15 T20N, R2E
Section 21 T20N, R2E	Section 22 T20N, R2E

An arrow points to the boundary between Section 15 and Section 22.

SECTION CORNER RECORD

NE 900-950

BOONE COUNTY SURVEYOR'S OFFICE

State Plane grid coordinates NAD83 (CORS96):

North: 1794457.22 East: 3174468.86 (U.S. survey feet)

Type of monument: Railroad Spike

Depth: flush with the adjacent road surface

Indiana tie card references:

IN02_T20NR2E15_76

IN02_T20NR2E22_04

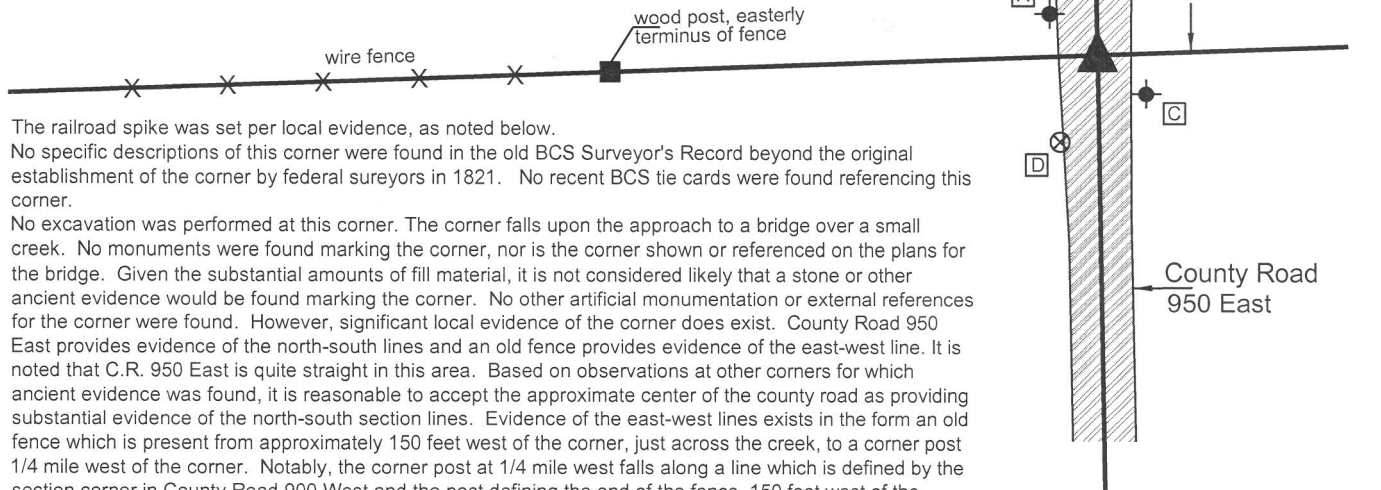
CORNER WITNESS DETAIL

SCALE 1" = 60'

- A - Mag nail w/ shiner set in top, S.W. most guard rail post, 19.9'
- B - Mag nail w/ shiner set in top, N.E. most guard rail post, 45.8'
- C - Mag nail w/ shiner set in top, S.E. most guard rail post, 19.4'
- D - Boone County witness mark, flush, 30.1'

References to S.W., N.E. and S.E. most guard rail post refer to S. side of bridge.

Boone County witness mark is a 3/8" diameter x 2' long rebar bearing a metal cap stamped "Boone County Witness Point."



The railroad spike was set per local evidence, as noted below.

No specific descriptions of this corner were found in the old BCS Surveyor's Record beyond the original establishment of the corner by federal surveyors in 1821. No recent BCS tie cards were found referencing this corner.

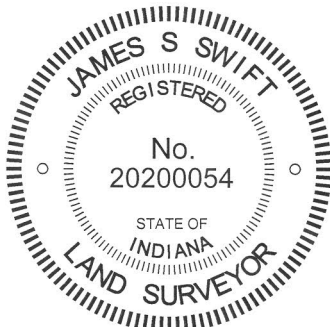
No excavation was performed at this corner. The corner falls upon the approach to a bridge over a small creek. No monuments were found marking the corner, nor is the corner shown or referenced on the plans for the bridge. Given the substantial amounts of fill material, it is not considered likely that a stone or other ancient evidence would be found marking the corner. No other artificial monumentation or external references for the corner were found. However, significant local evidence of the corner does exist. County Road 950 East provides evidence of the north-south lines and an old fence provides evidence of the east-west line. It is noted that C.R. 950 East is quite straight in this area. Based on observations at other corners for which ancient evidence was found, it is reasonable to accept the approximate center of the county road as providing substantial evidence of the north-south section lines. Evidence of the east-west lines exists in the form of an old fence which is present from approximately 150 feet west of the corner, just across the creek, to a corner post 1/4 mile west of the corner. Notably, the corner post at 1/4 mile west falls along a line which is defined by the section corner in County Road 900 West and the post defining the end of the fence, 150 feet west of the subject corner. Given that the nearly 1/4 mile long fence falls along the longer half mile line with less than one foot variation as observed at several points along the line, minimal uncertainty is associated with the evidence of this line. The line, defined from the corner in CR 900W through the easterly end post of the fence, was prolonged mathematically to its intersection with the approximate north-south centerline of County Road 950 East. The corner was established at this point of intersection. A railroad spike was set at this corner.

This corner was originally established as a wood post in 1821.

Marion Township

Section 15
T20N, R2E

Section 22
T20N, R2E



Kenneth E. Hedge
 Kenneth E. Hedge, County Surveyor

James S. Swift
 James S. Swift, IN LS 20200054

March 27, 2015

SECTION CORNER RECORD

NE 900-1000

BOONE COUNTY SURVEYOR'S OFFICE

State Plane grid coordinates NAD83 (2011):

North: 1794552.30 East: 3177124.62 (U.S. survey feet)

Type of monument: Plug in monument box, INDOT Type B

Depth: Flush with adjacent road surface

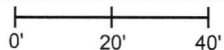
Indiana tie card references:

IN02_T20NR2E15_80 IN02_T20NR2E14_72

IN02_T20NR2E22_08 IN02_T20NR2E23_00

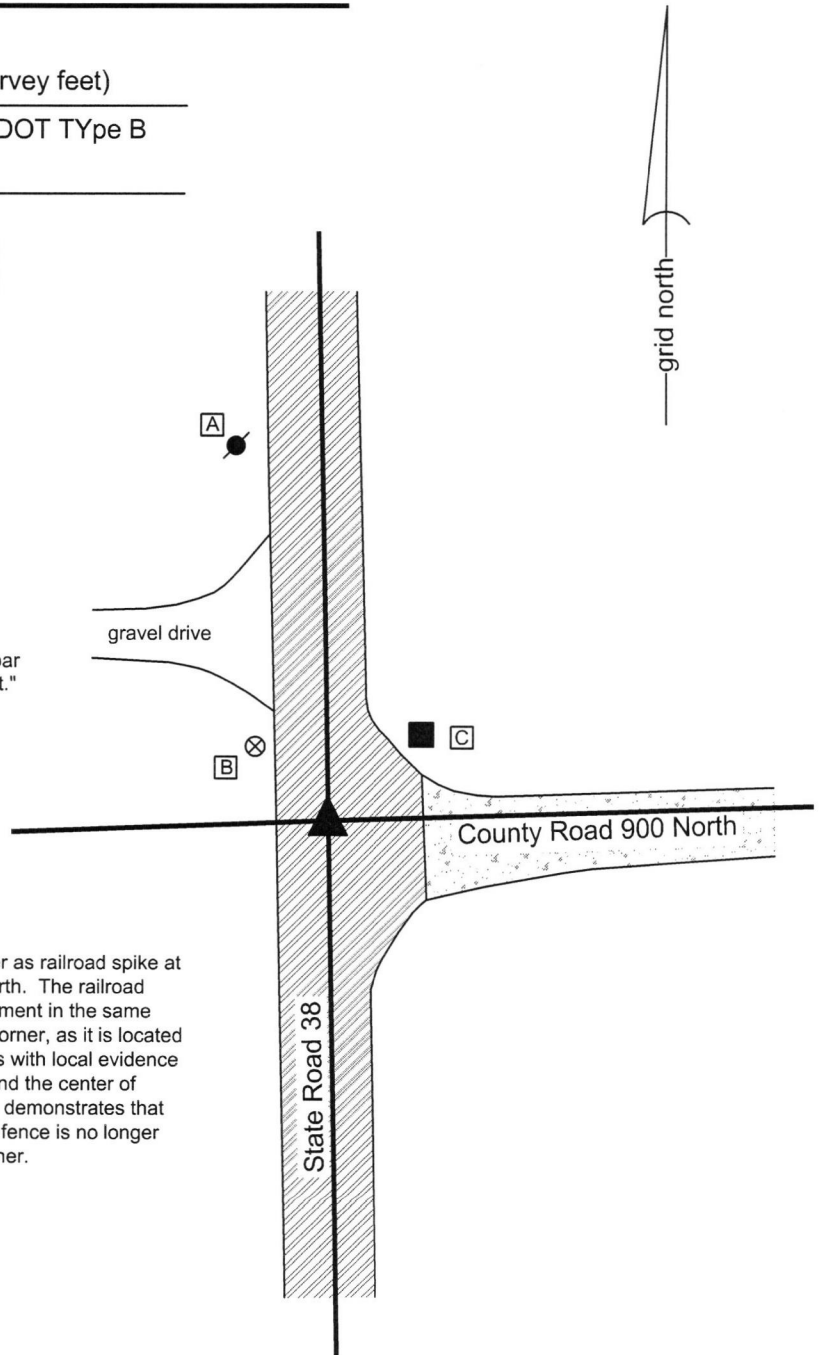
CORNER WITNESS DETAIL

SCALE 1" = 40'



- A - Mag nail set in E. side power pole, 2' a.g., 80.1'
- B - Boone County witness mark, flush, 21.6'
- C - Mag nail set in S. side wood post, 2' a.g., 24.5'

Boone County witness mark is a 3/8" diameter x 2' long rebar bearing a metal cap stamped "Boone County Witness Point."



The INDOT Type B monument was found in place. A BCS tie card dated September 18, 2006 shows the corner as railroad spike at the intersection of State Road 38 and County Road 900 North. The railroad spike has been subsequently replaced with a Type B monument in the same position by INDOT. Excavation was not performed at this corner, as it is located within an Indiana state highway. The Type B monument fits with local evidence in the form of the center of S.R. 38 to the north and south and the center of County Road 900 North to the east. The 2006 tie card also demonstrates that the railroad spike was in line with a fence to the west. This fence is no longer present. The Type B monument is held as marking the corner.



Kenneth E. Hedge
 Kenneth E. Hedge, County Surveyor

James S. Swift
 James S. Swift, IN LS 20200054
 March 23, 2017

Marion Township

Section 15 T20N, R2E	Section 14 T20N, R2E
Section 22 T20N, R2E	Section 23 T20N, R2E

SECTION CORNER RECORD

NE 950-900

BOONE COUNTY SURVEYOR'S OFFICE


State Plane grid coordinates NAD83 (CORS96):
North: 1797012.05 East: 3171766.08 (U.S. survey feet)

Type of monument: Harrison, 4" disk 'Section Corner'
Depth: One inch below adjacent road surface

Indiana tie card references:

IN02_T20NR2E16_44
IN02_T20NR2E15_36

CORNER WITNESS DETAIL

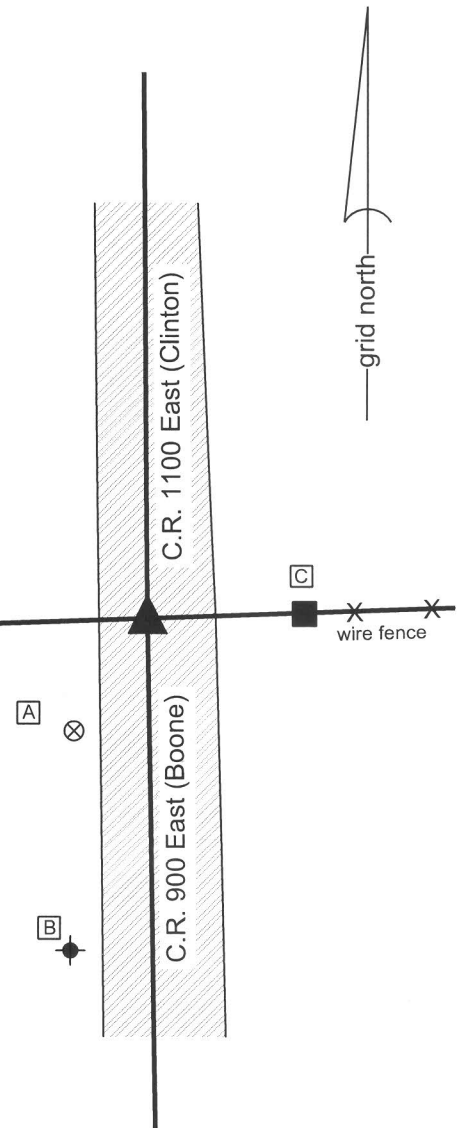
SCALE 1" = 30' 

- A - Boone County witness mark, flush, 20.94'
- B - Speed Limit 40 sign, E. edge, flush, 52.83'
- C - Mag nail set in S. side wood post, 2' a.g., 24.76'

Boone County witness mark is a 3/8" diameter x 2' long rebar bearing a metal cap stamped "Boone County Witness Point."

Clinton County

Boone County



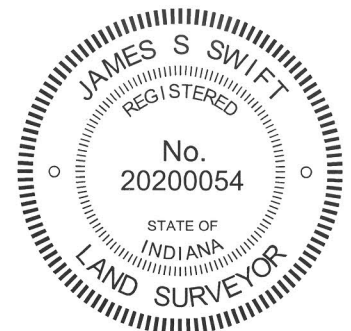
The harrison monument was set over a stone found.


No specific descriptions of this corner were found in the BCS Surveyor's Record, though the corner is mentioned as the terminal point for measurements in records of 1838 and 1872. A undated, loose sheet found in the pages of the BCS Surveyor's record shows this corner as being marked by a rock 13.10.7 + over another rock 7.5.3 1/2 +. The source of this sheet is not known but it appears quite old and references several other corners, at which the described rocks were also found. No recent BCS tie cards were found referencing this corner. A Clinton County tie card shows the corners as being a stone 4 inches deep.

This corner was excavated on October 10, 2013 with Dan Sheets, Clinton County Surveyor, present. No metallic monument was found prior to excavation, though the distance ties from the 1974 tie card were yet present. Excavation of the point indicated to be the corner on the 1974 tie card yielded a stone found at 4 inches deep. With 5 inches of the top of the stone exposed, it measured 11 inches N-S by 8 inches, E-W, approximating the dimensions described on the undated sheet mentioned above. The stone was embedded in the clay layer below the road, protruding approximately 4 inches into the bottom of the road bed. The top 5 inches of the stone were encased in concrete and a harrison monument (4 inches tall) was set over the high point of the stone, near the north edge.

This corner was originally established as a wood post in 1821.


Kenneth E. Hedge, County Surveyor




James S. Swift, IN LS 20200054
February 5, 2015

Sugar Creek Twp
Clinton County
Marion Township
Boone County

Section 16 T20N, R2E	Section 15 T20N, R2E
-------------------------	-------------------------

SECTION CORNER RECORD

NE 950-950

BOONE COUNTY SURVEYOR'S OFFICE

State Plane grid coordinates NAD83 (CORS96):

North: 1797102.03 East: 3174419.45 (U.S. survey feet)

Type of monument: Etched "+" mark on top, center of stone

Depth: five inches below adjacent gravel road surface

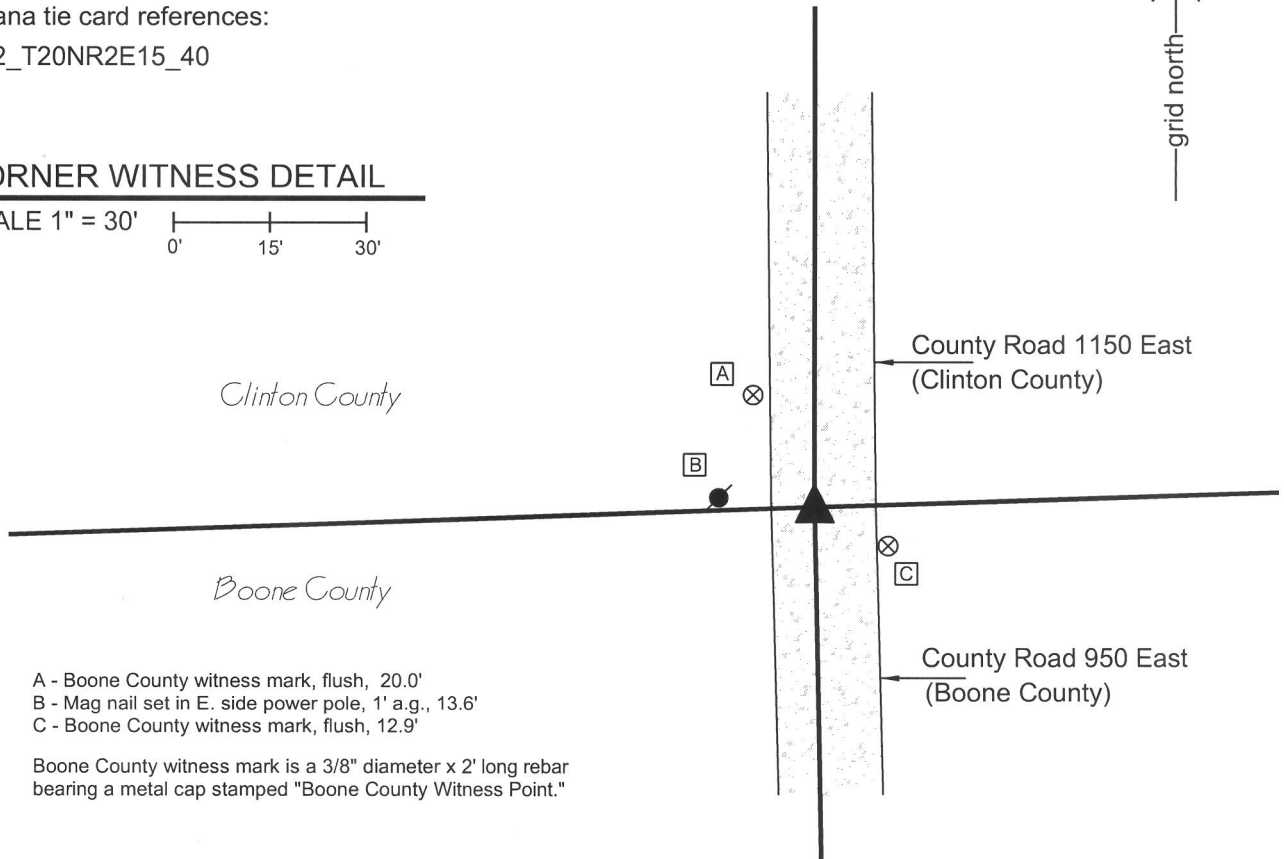
Indiana tie card references:

IN02_T20NR2E15_40



CORNER WITNESS DETAIL

SCALE 1" = 30'
0' 15' 30'



- A - Boone County witness mark, flush, 20.0'
- B - Mag nail set in E. side power pole, 1' a.g., 13.6'
- C - Boone County witness mark, flush, 12.9'

Boone County witness mark is a 3/8" diameter x 2' long rebar bearing a metal cap stamped "Boone County Witness Point."

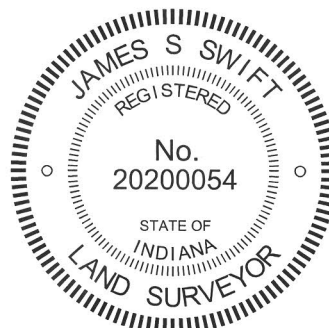
The Harrison monument was set over a stone found.

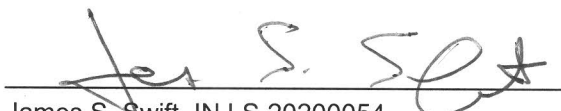
A BCS record of August 14, 1995 states "Rocks found that had been estab. by Clinton Co. Surveyor." A BCS tie card dated August 23, 1974 states "no stone found." A Clinton County tie card dated February 12, 1975 states "stone found set R.R. spike on top."

This corner was excavated on October 11, 2013 with Dan Sheet, Clinton County Surveyor, present. No metallic objects were found prior to excavation, due either to the fact they none were present or that none could be detected with a magnetic locator due to the presence of a significant amount of ferrous metal amongst the surface material of the road. Excavation revealed a stone found at 4 inches deep. With the top four inches of the stone exposed, it measured 16 inches N-S by 12 inches E-W and appeared to be situated horizontally. A distinct etched "+" mark was clearly visible on the top center of the stone. The stone was left in place and no monument was set above it. The above ties reference the mark on the stone.

This corner was not set by the original federal surveyors.


 Kenneth E. Hedge, County Surveyor



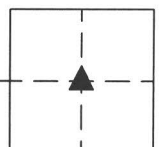

 James S. Swift, IN LS 20200054

February 5, 2015

Section 15
T20N, R2E

Sugar Creek Twp
Clinton County

Marion Township
Boone County



PHOTOGRAPHIC DOCUMENTATION

Date of photography: October 11, 2013

View of the stone from above and north.



View of the stone from above and west.



View from the south, looking across the stone and north along Clinton County C.R. 1150 East.



View from the east, showing the stone and the old end post on the west side of the road.



For details and documentation, refer to related sheet "Section Corner Record."

SECTION CORNER RECORD

NE 950-1000

BOONE COUNTY SURVEYOR'S OFFICE

State Plane grid coordinates NAD83 (2011):

North: 1797190.02 East: 3177076.12 (U.S. survey feet)

Type of monument: Plug in monument box, INDOT Type B

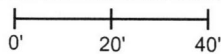
Depth: Flush with adjacent road surface

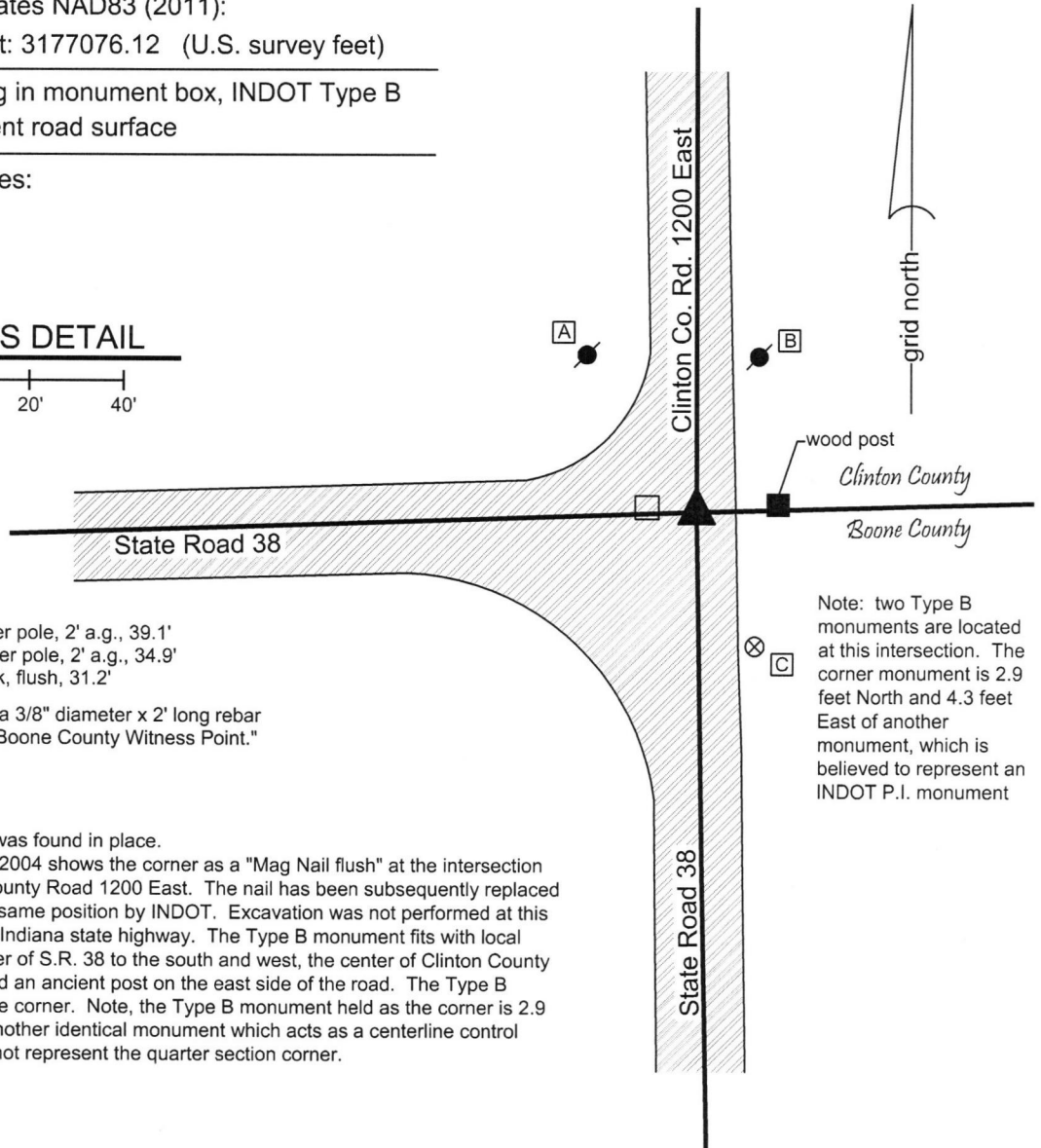
Indiana tie card references:

IN02_T20NR2E15_44

IN02_T20NR2E14_36

CORNER WITNESS DETAIL

SCALE 1" = 40' 



- A - Mag nail set in S. side power pole, 2' a.g., 39.1'
- B - Mag nail set in W. side power pole, 2' a.g., 34.9'
- C - Boone County witness mark, flush, 31.2'

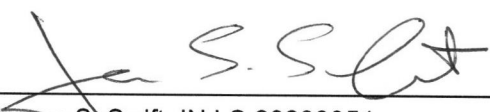
Boone County witness mark is a 3/8" diameter x 2' long rebar bearing a metal cap stamped "Boone County Witness Point."

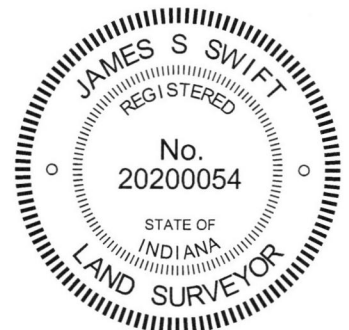
Note: two Type B monuments are located at this intersection. The corner monument is 2.9 feet North and 4.3 feet East of another monument, which is believed to represent an INDOT P.I. monument

The INDOT Type B monument was found in place.

A Clinton County tie card dated 2004 shows the corner as a "Mag Nail flush" at the intersection of State Road 38 and Clinton County Road 1200 East. The nail has been subsequently replaced with a Type B monument in the same position by INDOT. Excavation was not performed at this corner, as it is located within an Indiana state highway. The Type B monument fits with local evidence in the form of the center of S.R. 38 to the south and west, the center of Clinton County Road 1200 East to the north, and an ancient post on the east side of the road. The Type B monument is held as marking the corner. Note, the Type B monument held as the corner is 2.9 feet north and 4.3 feet east of another identical monument which acts as a centerline control monument for SR 38 and does not represent the quarter section corner.


 Kenneth E. Hedge, County Surveyor


 James S. Swift, IN LS 20200054
 March 23, 2017



Sugar Creek Twp
 Clinton County
 Marion Township
 Boone County

