

SECTION CORNER RECORD

NW 300-200

BOONE COUNTY SURVEYOR'S OFFICE

State Plane grid coordinates NAD83 (CORS96):

North: 1761403.92 East: 3114220.04 (U.S. survey feet)

Type of monument: Harrison, 4" disk 'Section Corner'

Depth: One inch below adjacent road surface

Indiana tie card references:

IN02_T19NR1W15_80

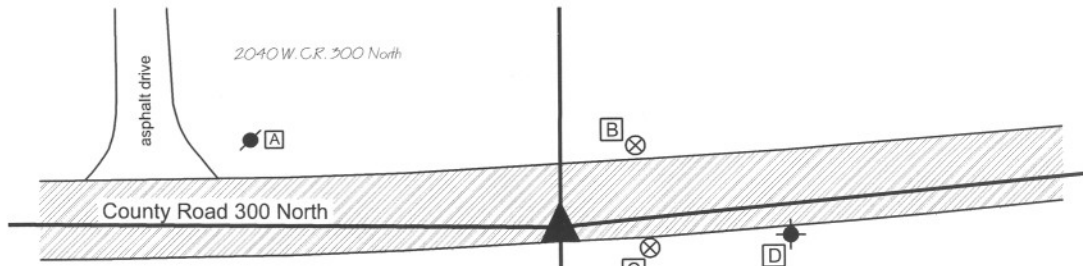
IN02_T19NR1W14_72

IN02_T19NR1W22_08

IN02_T19NR1W23_00

CORNER WITNESS DETAIL

SCALE 1" = 50'



- A - Mag nail set in S.E. side power pole, 2' a.g., 82.69'
- B - Boone County witness mark, flush, 29.10'
- C - Boone County witness mark, flush, 24.07'
- D - Survey control mark, flush, 60.04'

A 5/8 inch diameter rebar is situated 1.17 feet north and 1.71 feet east of the Harrison monument. (see notes.)

Boone County witness mark is a 3/8" diameter x 2' long rebar bearing a metal cap stamped "Boone County Witness Point."

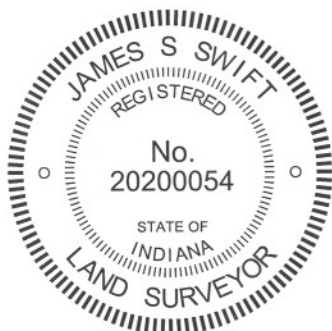
Survey control mark is a 3/8" diameter x 2' long rebar bearing a red plastic cap stamped "Control Point."

The Harrison monument was set over a stone found.

This corner is at a point where a substantial bend in the section lines occurs slightly west of the east line of the Thorntown Indian Reserve. The corner falls approximately 815 feet west of the Indian Reserve line and the situation at the corner is substantially influenced by the original government surveys of the lands within and east of the Reserve. The original government notes for that part of the line between sections 14 and 23 which falls outside (east) of the Reserve, dated August 1822, state "West between section 14 and 23.....67.46 intersected East boundary of Indian Reservation where set post from which..." An original government corner was established at this point. The original government notes for the establishment of the subject corner and for the survey of that part of the line between sections 14 and 23 within the reserve, dated May 1829, state "Set post corner to sections 14, 15, 22 & 23....." and "East on random between sections 14 and 23. 12.38 Intersected E. boundary of Reserve 119 links S. of post. West Corrected same line. 12.38 Section corner." From these notes it is apparent that original corners were set at both the section corner and the corner on reserve line. It is also apparent that the short line between the original corners would angle significantly to the north, compensating for the 119 link north-south difference between the two corners. The diagrams in the BCS Surveyor's Record reflect this angle and the existing roadway of County Road 300 North also reflects this angle. A BCS record of September 14-17, 1857 state "From 1 S86° 42' W to A" showing a distance of 12.39 chains from "1" (corner of the Indian Reserve line) to "A" (the subject corner.) With respect to corner "A", the record reads "Reestab'd Set Rock 5x10."

This corner also falls close to Interstate 65 and the section corner as well as the reserve line are shown on the sheet for line S-2-A, representing the overpass of C.R. 300 North over I-65. The plans (Proj. I-65-5(35) 140, F.Y. 1969, sheet 24 of 202) show the significant bend in County Road 300 North, establishing a P.I. at station 39+25.8. Line S-2-A is shown intersecting the Thorntown Reserve Line at station 87+37.5. The approximate section corner is shown as being on the north side of C.R. 300 North at station 39+04.5, 12' left. For purposes of this investigation, the alignment of line S-2-A was reconstructed by holding Type B monuments found at P.I. stations 45+85.5 and 54+04.5. The calculated location of the approximate section corner, as shown on the plans, does not fit with local evidence, being too far west of the Indian Reserve Line and too far north of the center of County Road 300 North. Accepting that C.R. 300 North was constructed generally along the section line, it would be expected that the section corner would fall within the roadway, at the point where the roadway bends. The field notes for the I-65 plans were supplied by INDOT and they do not show evidence for why the approximate section corner was placed at this point. They do, however, show a fence on the south side of the road marking the Thorntown Reserve line. As this fence is no longer visible, the plans were useful in providing evidence of the location of this line.

An approximate position for the corner was calculated holding the location of the Indian Reserve line shown on the I-65 plans, the record dimensions of 12.38 and 12.39 chains from the corner to the reserve line, and by the physical location of County Road 300 North to the east and west of the corner. Excavation at this point yielded two stones found. One stone was found at 13 inches below grade, measuring 5 inches N-S by 8 inches E-W by 6 inches tall. Another stone was found directly below this stone, at 20 inches deep. As found, the lower stone was lying on its side, and was not oriented in cardinal directions. However, the stone appeared to have been knocked over. Stood up, the stone measured 13 inches tall by 5 inches E-W by 9 inches N-S. The 5x9 dimensions were accepted as being the 5x10 called for in the 1857 record. As stood up, the stone protruded 3 inches out of the clay layer below the road into the bottom of the road bed. The stone is at approximately 815 feet west of the position of the Indian Reserve line calculated from the INDOT plans, which correlates well with the 12.38 chain (817.08 feet) and 12.39 chain (817.74) distances from the original and 1857 records, respectively. The stone was accepted as marking the corner. The stone was left in place, as stood up. The top 2 inches of the stone were encased in concrete and the Harrison monument was set directly over the top of the stone. It is noted that an iron pin with a bolt type head and square shaft was also found. The source of the bolt is not known. It may represent a monument set by the INDOT surveyors, though it does not match the position of the P.I. station 39+25.8. The bolt was removed, but the location of this bolt was perpetuated by established a 30 inch length of 5/8 inch diameter rebar at the same position. The rebar is 1.17 feet north and 1.71 feet east of the Harrison monument. The rebar should not be interpreted as marking the corner. The Harrison monument set over the stone marks the corner.



Kenneth E. Hedge
Kenneth E. Hedge, County Surveyor

James S. Swift
James S. Swift, IN LS 20200054
March 30, 2012

Center Township

Section 15 T19N, R1W	Section 14 T19N, R1W
Section 22 T19N, R1W	Section 23 T19N, R1W

PHOTOGRAPHIC DOCUMENTATION

Date of photography: August 11, 2010

View of the top stone as first exposed.



The top stone after being removed from the fill material and the space from which it was removed.



The lower stone as found, apparently on its side. Note that the bottom of the road bed is above the top of the stone.



The lower stone as stood up. Note that the top of the stone protrudes a few inches into the bottom of the road bed when stood up.



The lower stone as stood up, after the area of excavation was filled back to the level of the original bottom of the road bed.



Similar picture as to the left. View from the north.



For details and documentation, refer to related sheet "Section Corner Record."

SECTION CORNER RECORD

NW 300-300

BOONE COUNTY SURVEYOR'S OFFICE

State Plane grid coordinates NAD83 (CORS96):

North: 1761409.08 East: 3108881.80 (U.S. survey feet)

Type of monument: Harrison, 4" disk 'Section Corner'

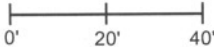
Depth: two inches above adjacent ground

Indiana tie card references:

IN02_T19NR1W16_80 IN02_T19NR1W15_72

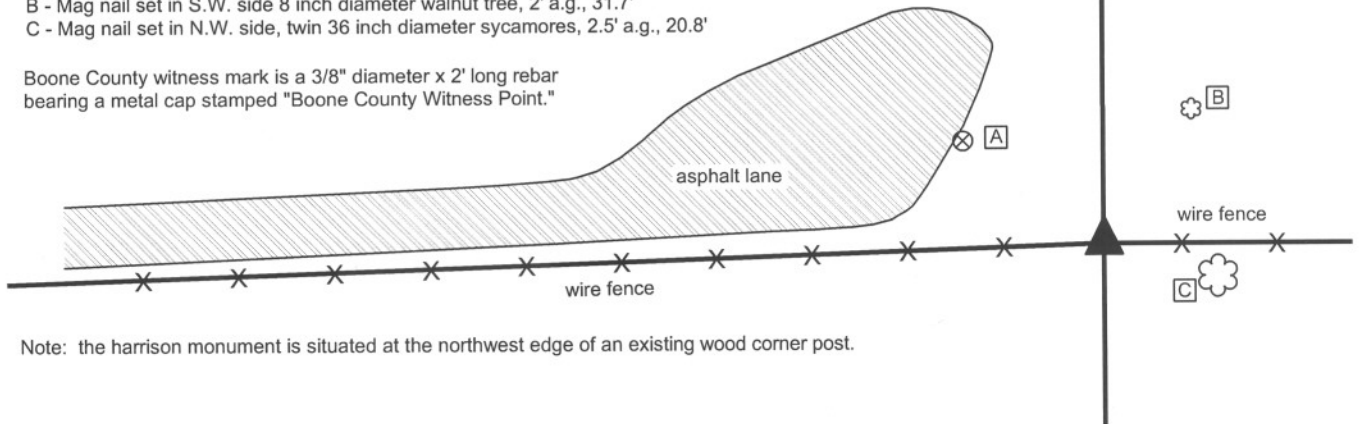
IN02_T19NR1W21_08 IN02_T19NR1W22_00

CORNER WITNESS DETAIL

SCALE 1" = 40' 

- A - Boone County witness mark, flush, 37.1'
- B - Mag nail set in S.W. side 8 inch diameter walnut tree, 2' a.g., 31.7'
- C - Mag nail set in N.W. side, twin 36 inch diameter sycamores, 2.5' a.g., 20.8'

Boone County witness mark is a 3/8" diameter x 2' long rebar bearing a metal cap stamped "Boone County Witness Point."



Note: the harrison monument is situated at the northwest edge of an existing wood corner post.

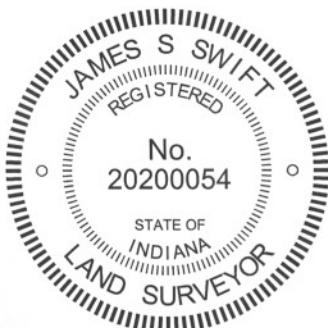
The harrison monument was set in place of a stone found.

A BCS record of May 9, 12 & 13, 1899 states "Reestablished by running line from the north and measuring from east & west for satisfaction. Found C of section 16 from line tree on line between sections 9 & 10. Found c of 16 from witness tree. Found d of 16 from witness stump and rock. Found D of 16 by running line from C (16) through c (16). Established C by running line from D (16) through d (16). Set a rock 9x8x8 in marked +."

No recent BCS tie cards were found referencing this corner.

Reconnaissance and preliminary excavation for this corner occurred on May 1, 2012 with final excavation and monumentation on May 15. Prior to excavation an old wood corner post was found with fence to the east and west and fencing cut off to the north. Wood braces were found on the east and west sides of the post. The stone described in the 1899 record was found at the northwest edge of the post, 6 inches deep. The stone appeared undisturbed and had a distinct etched "+" mark on the top. The stone was removed and found to measure 9 inches E-W by 8 inches N-S by 8 inches tall, as described in the 1899 record. A harrison monument was set in concrete in the position of the etched "+" found on the top of the stone.

This corner was originally established as a wood post in May, 1829.



Kenneth E. Hedge
 Kenneth E. Hedge, County Surveyor

James S. Swift
 James S. Swift, IN LS 20200054
 January 15, 2013

Center Township

Section 16 T19N, R1W	Section 15 T19N, R1W
Section 21 T19N, R1W	Section 22 T19N, R1W

PHOTOGRAPHIC DOCUMENTATION

Date of photography: May 1- 16, 2012

The corner prior to clearing or excavation.



The stone found at the base of the post.



The stone at the base of the post, after being exposed to the weather for two weeks.



The harrison monument set in place of the stone.



For details and documentation, refer to related sheet "Section Corner Record."

SECTION CORNER RECORD

BOONE COUNTY SURVEYOR'S OFFICE

NW 350-300

State Plane grid coordinates NAD83 (CORS96):
 North: 1764063.51 East: 3108876.77 (U.S. survey feet)

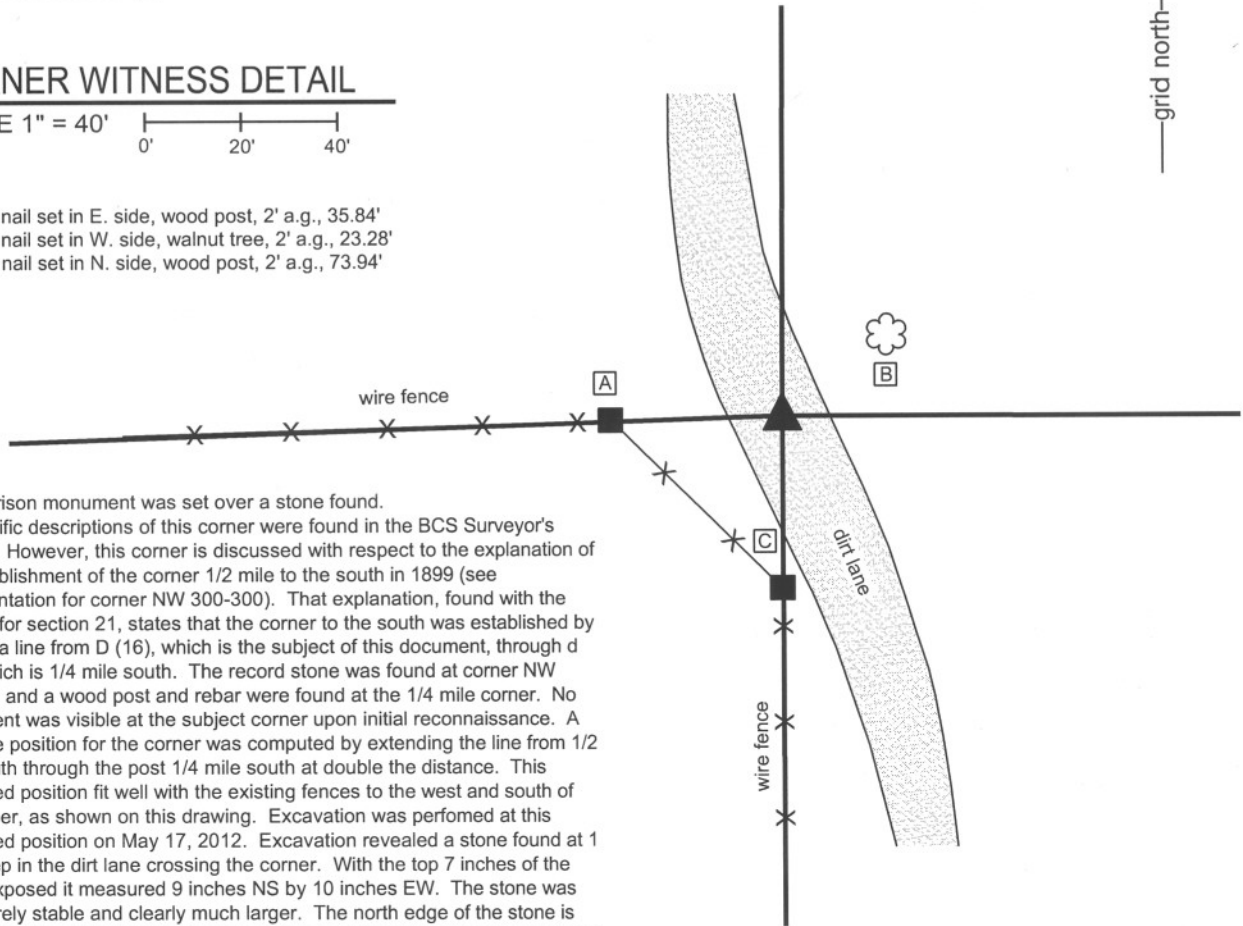
Type of monument: Harrison, 4" disk 'Section Corner'
 Depth: four inches below adjacent dirt lane surface

Indiana tie card references:
 IN02_T19NR1W15_36
 IN02_T19NR1W16_44

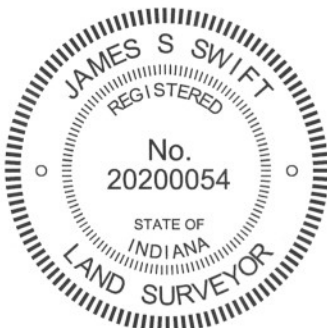
CORNER WITNESS DETAIL

SCALE 1" = 40'

- A - Mag nail set in E. side, wood post, 2' a.g., 35.84'
- B - Mag nail set in W. side, walnut tree, 2' a.g., 23.28'
- C - Mag nail set in N. side, wood post, 2' a.g., 73.94'

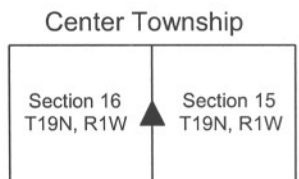


The harrison monument was set over a stone found. No specific descriptions of this corner were found in the BCS Surveyor's Record. However, this corner is discussed with respect to the explanation of the establishment of the corner 1/2 mile to the south in 1899 (see documentation for corner NW 300-300). That explanation, found with the records for section 21, states that the corner to the south was established by running a line from D (16), which is the subject of this document, through d (16), which is 1/4 mile south. The record stone was found at corner NW 300-300 and a wood post and rebar were found at the 1/4 mile corner. No monument was visible at the subject corner upon initial reconnaissance. A probable position for the corner was computed by extending the line from 1/2 mile south through the post 1/4 mile south at double the distance. This computed position fit well with the existing fences to the west and south of the corner, as shown on this drawing. Excavation was performed at this computed position for the corner was computed by extending the line from 1/2 mile south through the post 1/4 mile south at double the distance. This computed position fit well with the existing fences to the west and south of the corner, as shown on this drawing. Excavation was performed at this computed position on May 17, 2012. Excavation revealed a stone found at 1 foot deep in the dirt lane crossing the corner. With the top 7 inches of the stone exposed it measured 9 inches NS by 10 inches EW. The stone was still entirely stable and clearly much larger. The north edge of the stone is flat and vertical. The top off the stone slopes towards the south edge and the high point of the stone is near the north edge. The stone was precisely at the computed position and fits well with all found evidence and correlates well with the 1899 record. The top, high point of the stone was held as marking the corner. The stone was left in place. The top 7 inches of the stone were encased in concrete and harrison monument set over the top, high point. This corner was originally established as a wood post in May, 1829.



Kenneth E. Hedge
 Kenneth E. Hedge, County Surveyor

James S. Swift
 James S. Swift, IN LS 20200054
 January 15, 2013



SECTION CORNER RECORD

BOONE COUNTY SURVEYOR'S OFFICE

NW 400-250

State Plane grid coordinates NAD83 (CORS96):

North: 1766688.64 East: 3111572.18 (U.S. survey feet)

Type of monument: Harrison, 4" disk 'Section Corner'

Depth: Four inches above adjacent ground

Indiana tie card references:

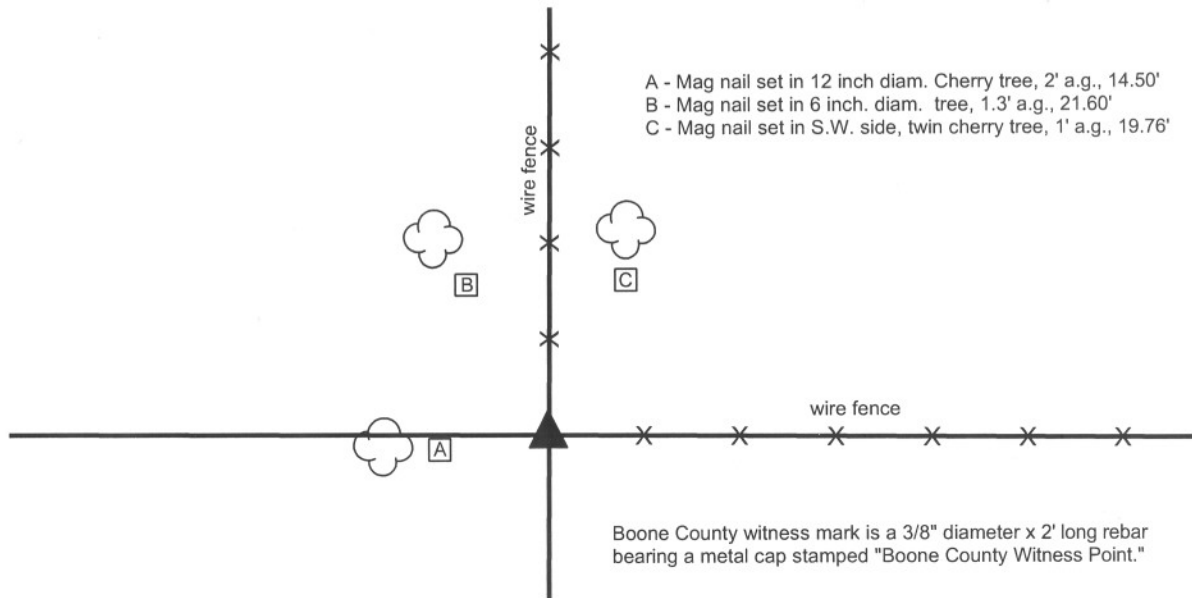
IN02_T19NR1W10_76

IN02_T19NR1W15_04



CORNER WITNESS DETAIL

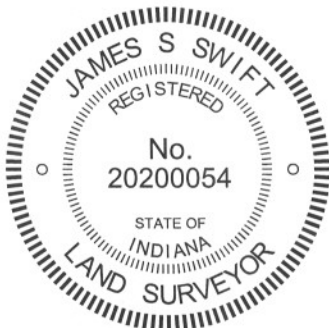
SCALE 1" = 20'



The harrison monument was set in place of a stone found.

No specific descriptions of this corner were found in the BCS Surveyor's Record, nor were any recent BCS tie cards found referencing it. The corner is shown as a stone found on a survey by C. David Helton dated June 15, 1998 and recorded as instrument 9809245 in the Office of the Boone County Recorder. The corner is also shown as a stone found on a survey by Paul I. Cripe, Inc. dated April 23, 1997.

This corner was excavated and monumented on May 10, 2012. The stone was found at the corner of fences to the north and east. The corner post was present but lying on the ground adjacent to the stone to the northeast. Several rocks were found in the immediate vicinity of the corner but the stone held was the obvious choice as the monument marking the corner. This stone was upright with a distinct high point near the center of the stone in the E-W dimension and near the north edge of the stone. The north edge was flat and vertical. The position of the stone fit with the Helton and Cripe surveys. The stone measured 16 inches E-W by 12 inches N-S and 15 inches tall. The stone was moderately stable, though it could be moved by prying with a shovel. The stone did not appear to be employed as a brace rock for the adjacent corner post. Although the stone is not mentioned in the BCS Surveyors record, it did have several characteristics found associated with corner stones, fit with the local evidence in the form of the fence corner and has been held for the two known surveys of the adjacent property. The stone was removed and the harrison monument was set in concrete in the position of the top, high point of the stone.



Kenneth E. Hedge
Kenneth E. Hedge, County Surveyor

James S. Swift
James S. Swift, IN LS 20200054
January 15, 2013

Washington Twp

Section 10
T19N, R1W

Center Twp

Section 15
T19N, R1W

PHOTOGRAPHIC DOCUMENTATION

Date of photography: May 9-11, 2012

View of the stone and corner area after initial clearing, including removal of the dead tree shown in the picture below. The paint spot on the top of the stone represents the specific point held as the corner.



Side view of the stone after it was removed from the ground.



View of the stone and corner area prior to clearing and excavation. Note the old corner post lying on the ground near the stone.



The harrison monument set in place of the stone.



For details and documentation, refer to related sheet "Section Corner Record."

SECTION CORNER RECORD

NW 400-300

BOONE COUNTY SURVEYOR'S OFFICE

State Plane grid coordinates NAD83 (CORS96):

North: 1766697.91 East: 3108886.25 (U.S. survey feet)

Type of monument: 5/8" rebar with metal cap stamped "Boone County Surveyor"

Depth: Flush with adjacent ground

Indiana tie card references:

IN02_T19NR1W09_80 IN02_T19NR1W10_72

IN02_T19NR1W16_08 IN02_T19NR1W15_00

CORNER WITNESS DETAIL

SCALE 1" = 40'



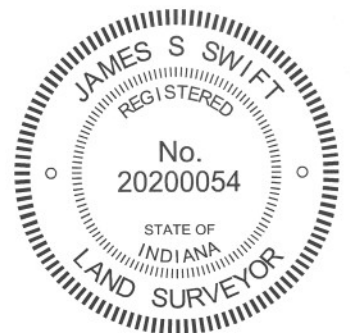
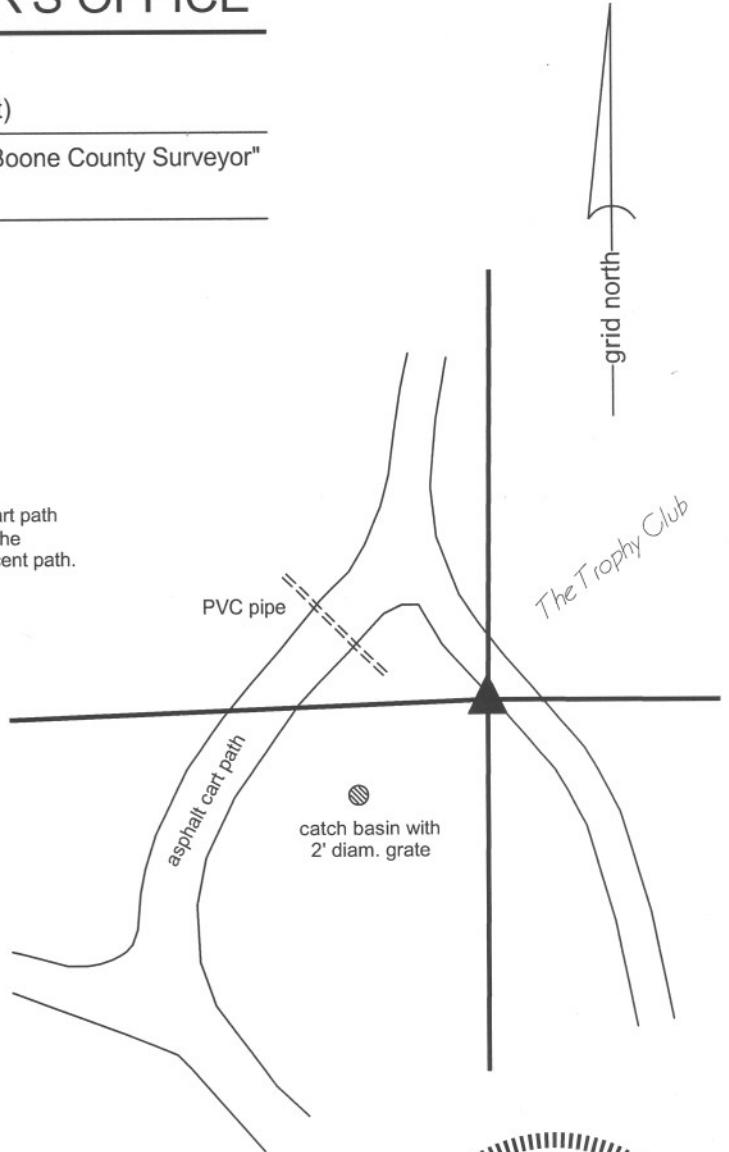
Note: the capped rebar is approximately 1 foot west of the asphalt golf cart path and approximately 25 feet southeasterly along the edge of the path from the intersection of the south edge of the path with the south edge of the adjacent path. Additional, specific distance ties are not provided.

The rebar was set in a computed position.

A BCS record of October 12, 1912 states "located from line tree 5.86 [chains] north of corner. Drove stake." The corner is also included in a metes and bounds description written out in the BCS Surveyor's Record, dated June 7, 1943. This description places the corner at 2648 feet south of the east quarter corner of section 9. The description also places the east quarter corner at 2649 feet east of the center of section. The east quarter corner (see documentation for corner NW 450-300) was established per a stone found in 1970. The center of section (NW 450-350) has not been excavated, though a nail at the county road intersection is believed to be set over the top of a railroad rail slanted over a stone, per BCS records of 1970. The distance between the east quarter corner and the nail believed to be marking the center of section agrees precisely with the 1943 distance, within uncertainties of significant digits.

No monumentation or evidence of the subject corner was found in the immediate vicinity of the expected position thereof. A well established, ancient fence was found to the north, beginning approximately 350 feet north of the corner. The subject corner was established at 2648.13 feet from the east quarter corner on a line prolonged from the east quarter corner south along the existing, ancient fence. Establishing the corner as such holds the best available evidence of the section line in the form of the fence, holds the distance from the 1943 description and honors the same approach to establishing the corner as the 1912 corner record. The precise distance of 2648.13 feet, rather than 2648.0, was borrowed from a survey by C. David Helton dated June 15, 1998 and recorded as instrument 9809245 in the Office of the Boone County Recorder. The position of the corner as defined by the fence prolonged to the south (i.e. the approach held to compute the position of this corner) falls approximately 1.7 feet west of the position of the corner held by Helton, as computed from remote points shown on that survey.

This corner was originally established as a wood post in May, 1829.



Kenneth E. Hedge
Kenneth E. Hedge, County Surveyor

James S. Swift
James S. Swift, IN LS 20200054
January 15, 2013

Washington Township

Center Township

Section 9 T19N, R1W	Section 10 T19N, R1W
Section 16 T19N, R1W	Section 15 T19N, R1W