

SECTION CORNER RECORD

BOONE COUNTY SURVEYOR'S OFFICE

NW 300-100

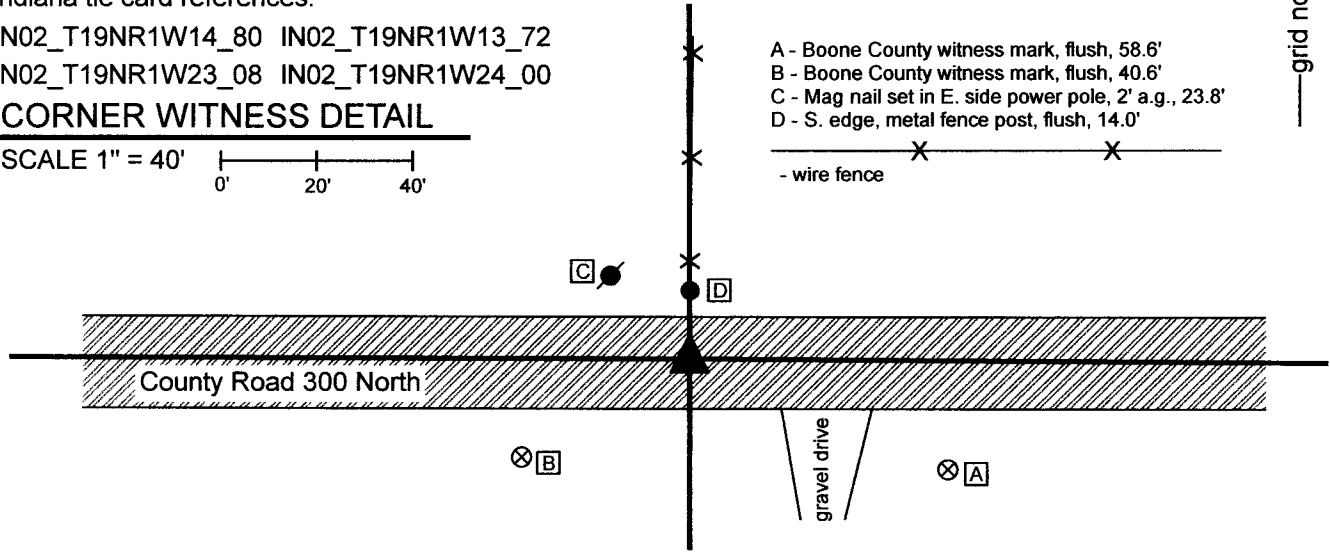
State Plane grid coordinates NAD83 (2011):
 North: 1761483.89 East: 3119483.81 (U.S. survey feet)

Type of monument: Harrison, 4" disk 'Section Corner'
 Depth: One inch below adjacent road surface

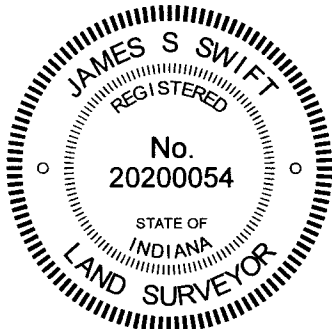
Indiana tie card references:
 IN02_T19NR1W14_80 IN02_T19NR1W13_72
 IN02_T19NR1W23_08 IN02_T19NR1W24_00

CORNER WITNESS DETAIL

SCALE 1" = 40'



The Harrison monument was set in place of a vertical section of railroad rail found. A BCS record which appears to be from April 20, 1908, though the date is not entirely clear, states, with respect to this corner, "Re-est from roots of oak and some roots of sugar. Set rock 6x14x22 pointed and no mark." No recent BCS tie cards were found referencing the corner. This corner was excavated on November 2, 2022. Prior to excavation, a railroad spike was found at 1 inch deep in the east-west roadway. Excavation revealed a vertical section of railroad rail found at 10 inches below grade. The top of the rail was not directly below the position of the spike. The spike, removed during excavation, had been approximately 0.25 foot south and 0.2 foot west of the top of the rail. It was observed during excavation, that a small hole had been previously excavated through the lower layers of asphalt, evidently exposing the rail. The top of the rail was painted orange, as found, clearly indicating that it had been previously exposed. Furthermore, it is noted that the railroad spike found prior to excavation was at 1 inch below grade, whereas in 2010 and 2016 a spike had been located at this corner at 3 inches deep. Per GPS positions, the spike located in 2010 and 2016 was over the rail, whereas the spike found in 2022 was not. Analysis of this situation in the field yielded the conclusion that at some point reasonably recently, the rail was exposed and painted. The spike previously located over the rail appears to have been removed during this process. The new spike was not set in the same position, and was most likely driven into the available, remaining asphalt at the edge of the small area of excavation, slightly southwest of the position of the rail and previous spike. No surveys, recorded or not, were found to support this conclusion. However, the fact that the spike located in 2022 was at a higher elevation than the spike previously located and the fact that the the GPS positions from 2010 and 2016 (accounting for the 2011 GPS adjustment) fit well with the position of the rail support this theory. Further excavation of an area extending 2.5 feet in all cardinal directions from position of the spike originally found did not reveal further evidence of the corner. Excavation was performed to the bottom of the road bed at 21 inches deep. The stone called for in the old BCS record was not found. The origin of the rail is not known. The rail was most likely set by BCS field crews at some point in the late 1960s or early 1970s, as it is known that crews from this office set vertical sections of rail to mark section corners during that era. It is also known that, if such crews found a stone, they typically removed them and replaced them with a rail. No tie card or field notes were found to confirm or disprove that this rail replaced a stone. The position of the rail fit well with local evidence of the corner, being close to the approximate center of the east-west road and in-line with an old fence and steel post on the north side of the road. This position also fit reasonably well with the relative positions of proximate corners, though a purely mathematical approach to the location of the corner, relative to other corners and federal distances, indicates that the corner could be up to eight feet further east. Excavation was not extended that far east. The rail was accepted as the best available evidence of the corner and was held as marking the corner. The rail and spike were both removed during excavation and a Harrison monument was set in the position of the top of the rail. This corner was originally established as a wood post in 1822.



Kenneth E. Hedge
 Kenneth E. Hedge, County Surveyor

James S. Swift
 James S. Swift, IN LS 20200054
 November 16, 2022

Center Township

Section 14 T19N, R1W	Section 13 T19N, R1W
Section 23 T19N, R1W	Section 24 T19N, R1W

SECTION CORNER RECORD

NW 300-150

BOONE COUNTY SURVEYOR'S OFFICE

State Plane grid coordinates NAD83 (2011):

North: 1761492.66 East: 3116833.47 (U.S. survey feet)

Type of monument: Harrison, 4" disk 'Section Corner'

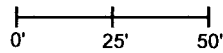
Depth: Flush with adjacent road surface

Indiana tie card references:

IN02_T19NR1W14_76 IN02_T19NR1W23_04

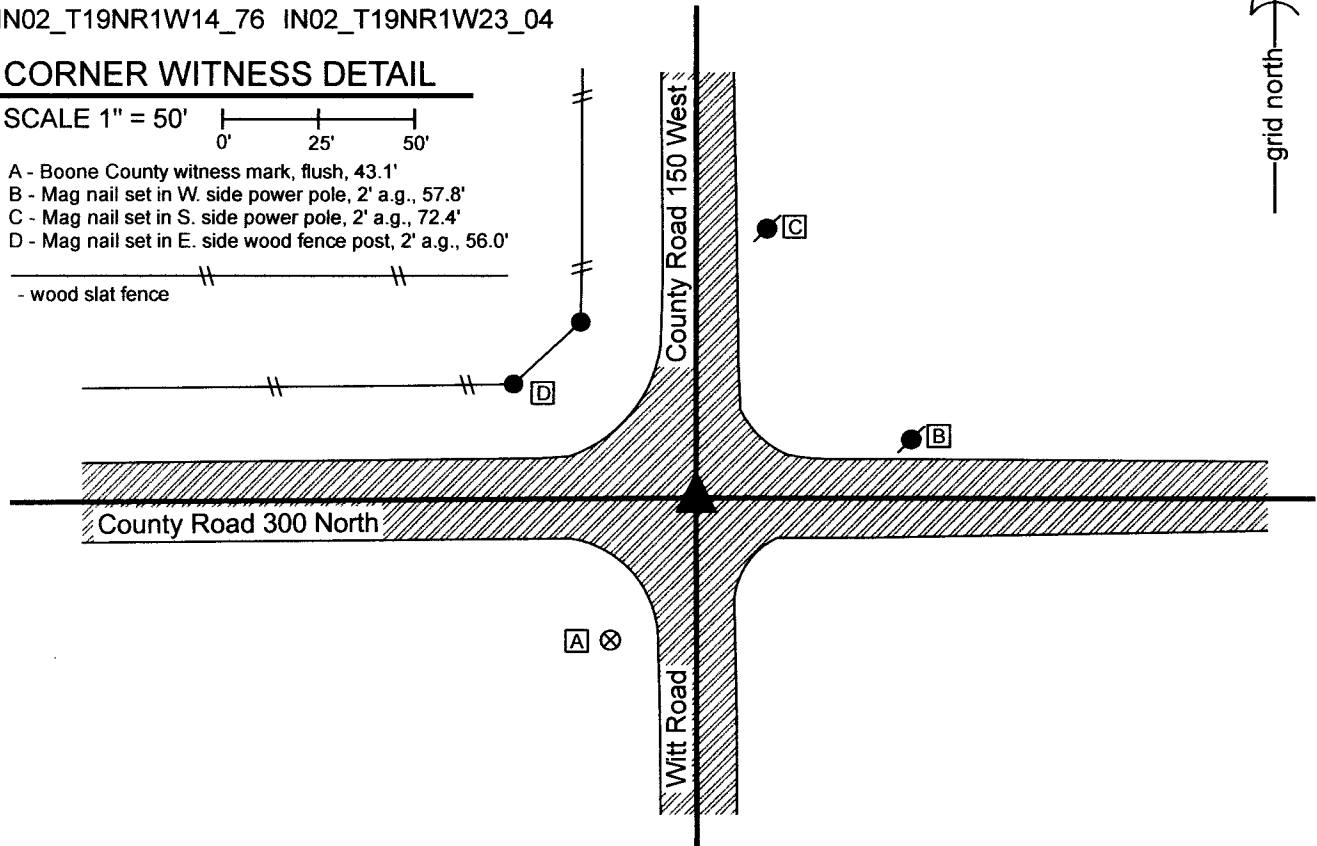
CORNER WITNESS DETAIL

SCALE 1" = 50'



- A - Boone County witness mark, flush, 43.1'
- B - Mag nail set in W. side power pole, 2' a.g., 57.8'
- C - Mag nail set in S. side power pole, 2' a.g., 72.4'
- D - Mag nail set in E. side wood fence post, 2' a.g., 56.0'

- wood slat fence

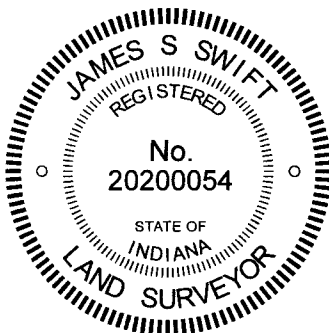


The Harrison monument was set over a vertical section of railroad rail found and in place of a square-headed bolt spike.

No specific descriptions of this corner or entries calling for a stone were found in the BCS Surveyor's Record. A BCS tie card dated July 10, 1968 states, with respect to this corner, "No stone."

Minor excavation was performed at this corner on November 3, 2022. A square headed bolt spike was found at 3 inches deep in a hole in the asphalt in the approximate center of the intersection of the east-west and north-south county roads. The bolt spike was removed and a vertical section of railroad rail was found at 7 inches deep, directly below the top of the spike. The shaft of the spike appeared to have been driven along the west edge of the rail, though the top of the spike had been directly over the center of the neck of the rail. It is known that the spike and rail have been held to mark the corner for surveys in this vicinity and held as the reference point for deeds in the immediate vicinity. It is also known that the spike has been held for preliminary surveys pertaining to the proposed new exit from I-65 and the proposed Eli Lilly site to the northeast. Given the lack of references to the stone and recent dependence on the county referenced position for substantial projects already in process, large scale excavation was not performed. The spike and rail were held as marking the corner and a Harrison monument was set directly over the neck of the rail, in place of the square-headed bolt spike.

This corner was originally established as a wood post in 1822.



Kenneth E. Hedge
 Kenneth E. Hedge, County Surveyor

James S. Swift
 James S. Swift, IN LS 20200054
 November 16, 2022

Center Township

Section 14
T19N, R1W

Section 23
T19N, R1W

SECTION CORNER RECORD

NW 300-200

BOONE COUNTY SURVEYOR'S OFFICE

State Plane grid coordinates NAD83 (CORS96):

North: 1761403.92 East: 3114220.04 (U.S. survey feet)

Type of monument: Harrison, 4" disk 'Section Corner'

Depth: One inch below adjacent road surface

Indiana tie card references:

IN02_T19NR1W15_80

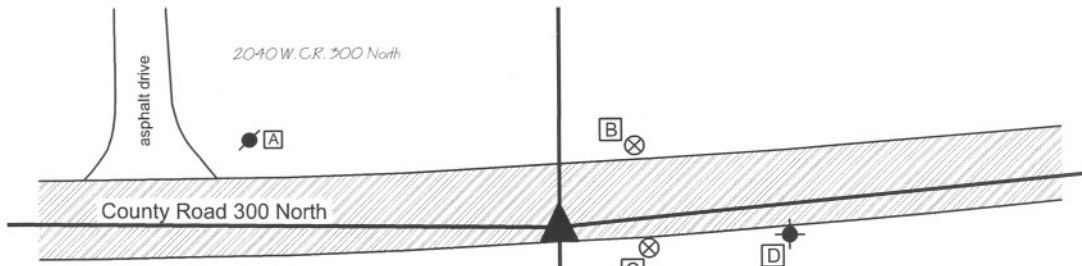
IN02_T19NR1W14_72

IN02_T19NR1W22_08

IN02_T19NR1W23_00

CORNER WITNESS DETAIL

SCALE 1" = 50'



- A - Mag nail set in S.E. side power pole, 2' a.g., 82.69'
- B - Boone County witness mark, flush, 29.10'
- C - Boone County witness mark, flush, 24.07'
- D - Survey control mark, flush, 60.04'

A 5/8 inch diameter rebar is situated 1.17 feet north and 1.71 feet east of the Harrison monument. (see notes.)

Boone County witness mark is a 3/8" diameter x 2' long rebar bearing a metal cap stamped "Boone County Witness Point."

Survey control mark is a 3/8" diameter x 2' long rebar bearing a red plastic cap stamped "Control Point."

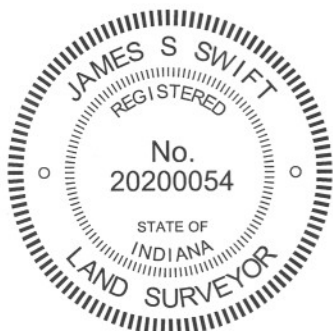
The Harrison monument was set over a stone found.

This corner is at a point where a substantial bend in the section lines occurs slightly west of the east line of the Thorntown Indian Reserve. The corner falls approximately 815 feet west of the Indian Reserve line and the situation at the corner is substantially influenced by the original government surveys of the lands within and east of the Reserve. The original government notes for that part of the line between sections 14 and 23 which falls outside (east) of the Reserve, dated August 1822, state "West between section 14 and 23.....67.46 intersected East boundary of Indian Reservation where set post from which..." An original government corner was established at this point. The original government notes for the establishment of the subject corner and for the survey of that part of the line between sections 14 and 23 within the reserve, dated May 1829, state "Set post corner to sections 14, 15, 22 & 23....." and "East on random between sections 14 and 23. 12.38 Intersected E. boundary of Reserve 119 links S. of post. West Corrected same line. 12.38 Section corner." From these notes it is apparent that original corners were set at both the section corner and the corner on reserve line. It is also apparent that the short line between the original corners would angle significantly to the north, compensating for the 119 link north-south difference between the two corners. The diagrams in the BCS Surveyor's Record reflect this angle and the existing roadway of County Road 300 North also reflects this angle.

A BCS record of September 14-17, 1857 state "From 1 S86° 42' W to A" showing a distance of 12.39 chains from "1" (corner of the Indian Reserve line) to "A" (the subject corner.) With respect to corner "A", the record reads "Reestab'd Set Rock 5x10."

This corner also falls close to Interstate 65 and the section corner as well as the reserve line are shown on the sheet for line S-2-A, representing the overpass of C.R. 300 North over I-65. The plans (Proj. I-65-5(35) 140, F.Y. 1969, sheet 24 of 202) show the significant bend in County Road 300 North, establishing a P.I. at station 39+25.8. Line S-2-A is shown intersecting the Thorntown Reserve Line at station 87+37.5. The approximate section corner is shown as being on the north side of C.R. 300 North at station 39+04.5, 12' left. For purposes of this investigation, the alignment of line S-2-A was reconstructed by holding Type B monuments found at P.I. stations 45+85.5 and 54+04.5. The calculated location of the approximate section corner, as shown on the plans, does not fit with local evidence, being too far west of the Indian Reserve Line and too far north of the center of County Road 300 North. Accepting that C.R. 300 North was constructed generally along the section line, it would be expected that the section corner would fall within the roadway, at the point where the roadway bends. The field notes for the I-65 plans were supplied by INDOT and they do not show evidence for why the approximate section corner was placed at this point. They do, however, show a fence on the south side of the road marking the Thorntown Reserve line. As this fence is no longer visible, the plans were useful in providing evidence of the location of this line.

An approximate position for the corner was calculated holding the location of the Indian Reserve line shown on the I-65 plans, the record dimensions of 12.38 and 12.39 chains from the corner to the reserve line, and by the physical location of County Road 300 North to the east and west of the corner. Excavation at this point yielded two stones found. One stone was found at 13 inches below grade, measuring 5 inches N-S by 8 inches E-W by 6 inches tall. Another stone was found directly below this stone, at 20 inches deep. As found, the lower stone was lying on its side, and was not oriented in cardinal directions. However, the stone appeared to have been knocked over. Stood up, the stone measured 13 inches tall by 5 inches E-W by 9 inches N-S. The 5x9 dimensions were accepted as being the 5x10 called for in the 1857 record. As stood up, the stone protruded 3 inches out of the clay layer below the road into the bottom of the road bed. The stone is at approximately 815 feet west of the position of the Indian Reserve line calculated from the INDOT plans, which correlates well with the 12.38 chain (817.08 feet) and 12.39 chain (817.74) distances from the original and 1857 records, respectively. The stone was accepted as marking the corner. The stone was left in place, as stood up. The top 2 inches of the stone were encased in concrete and the Harrison monument was set directly over the top of the stone. It is noted that an iron pin with a bolt type head and square shaft was also found. The source of the bolt is not known. It may represent a monument set by the INDOT surveyors, though it does not match the position of the P.I. station 39+25.8. The bolt was removed, but the location of this bolt was perpetuated by established a 30 inch length of 5/8 inch diameter rebar at the same position. The rebar is 1.17 feet north and 1.71 feet east of the Harrison monument. The rebar should not be interpreted as marking the corner. The Harrison monument set over the stone marks the corner.



Kenneth E. Hedge
 Kenneth E. Hedge, County Surveyor

James S. Swift
 James S. Swift, IN LS 20200054
 March 30, 2012

Center Township

Section 15 T19N, R1W	Section 14 T19N, R1W
Section 22 T19N, R1W	Section 23 T19N, R1W

PHOTOGRAPHIC DOCUMENTATION

Date of photography: August 11, 2010

View of the top stone as first exposed.



The top stone after being removed from the fill material and the space from which it was removed.



The lower stone as found, apparently on its side. Note that the bottom of the road bed is above the top of the stone.



The lower stone as stood up. Note that the top of the stone protrudes a few inches into the bottom of the road bed when stood up.



The lower stone as stood up, after the area of excavation was filled back to the level of the original bottom of the road bed.



Similar picture as to the left. View from the north.



For details and documentation, refer to related sheet "Section Corner Record."

SECTION CORNER RECORD

NW 300-200RSV

BOONE COUNTY SURVEYOR'S OFFICE

Angle Point on the Indian Treaty Line

State Plane grid coordinates NAD83 (2011):

North: 1761480.48 East: 3115031.22 (U.S. survey feet)

Type of monument: Harrison, 4" disk 'Treaty Line'

Depth: flush with adjacent road surface

Indiana tie card references:

IN02_T19NR1W14_73 IN02_T19NR1W23_01

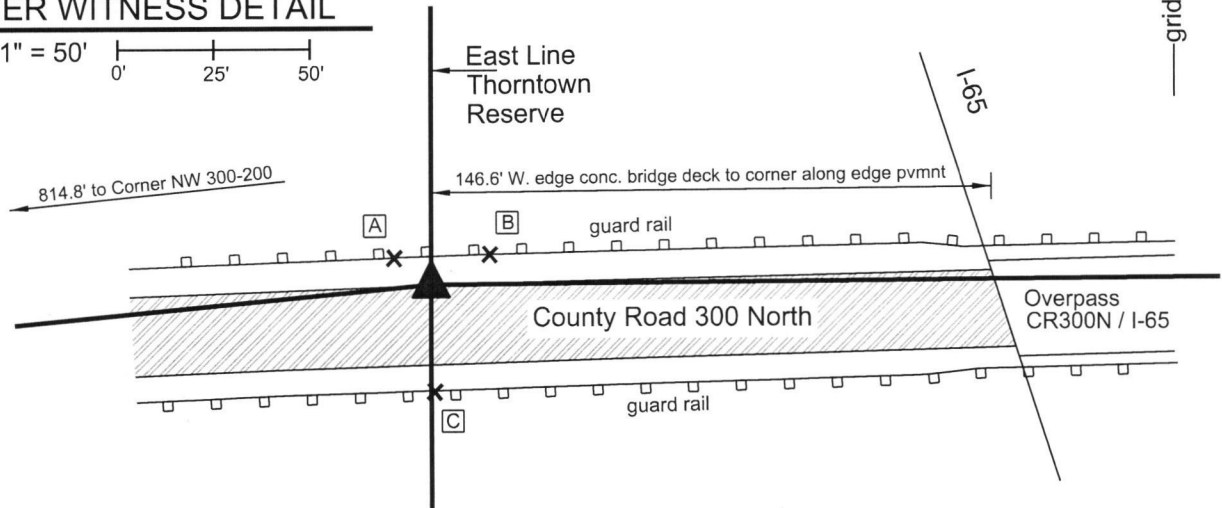
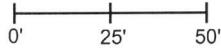
Note: the Indiana tie card reference number system does not account for treaty line corners. The above numbers represent the closest integer to the actual position of the corner.

- A - Chisel mark in the top of guard rail post, 11.9'
- B - Chisel mark in the top of guard rail post, 17.4'
- C - Chisel mark in the top of guard rail post, 27.6'

Note: the monument is at the north edge of pavement witnessed by an orange fiberglass lathe (BCS) in guard rail

CORNER WITNESS DETAIL

SCALE 1" = 50'



The Harrison monument was set at a calculated position.

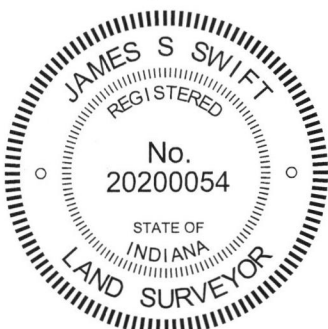
This corner is an original federal corner, set on the east line of the Thorntown Reserve in 1822. The adjoining sections to the east were laid out as part of the same survey which established this corner. The adjoining sections to the west were laid out in 1829. Inconsistencies in the two surveys resulted in a misalignment of the east-west section lines on the respective sides of the treaty line, which caused a significant bend in the north line of the northwest quarter of section 23 at the point where it crosses the treaty line. The angle point was set as part of the original survey and should be held as defining the section lines to the east and west and the treaty line to the north and south.

The distance between the angle point and the northwest corner of section 23 (see corner NW 300-200) was reported in the federal notes of 1829 as being 12.38 chains (817.08 feet). A BCS record of September 14-17, 1857 reported the distance as 12.39 chains (817.74 feet).

The plans for the overpass of County Road 300 North over Interstate 65 were provided by INDOT along with original field notes from the survey from which the plans were made. The Thorntown Reserve line is shown on sheet 24 of 202 on the plan set I-65-5(35) 140, fiscal year 1969. The plans and the field notes show a fence on that portion of the reserve line south of the road at STA 47+37.5, Lines S-2-A. The east-west position of the angle point was determined with respect to the plans, established from the found P.I. monuments at Station 45+85.69 and 54+04.1. The two monuments were found to be 1.1 feet further apart than the difference in stations and the position of STA 47+37.5 was scaled to fit the positions of the found monuments. The north-south position of the angle point was determined by extending the line connecting a bolt commonly accepted as marking the north quarter corner of section 23 and the monument found at P.I. STA 54+04.1.

The distance measured between the angle point and the northwest corner of Section 23 is 814.8 feet, approximately 3 feet less than the distance reported on the 1857 survey. Hence, uncertainties of 3 feet may be attributed to the location of the corner with respect to that record and uncertainties of 1 foot may be attributed to the location of the corner with respect to the aforementioned INDOT plans. A short section of relatively new fence was found near the treaty line, south of the road. This fence falls between 1 and 3 feet east of the approximate treaty line.

No excavation was performed, as this corner falls in an area of significant fill on the approach to the overpass of County Road 300 North over I-65.

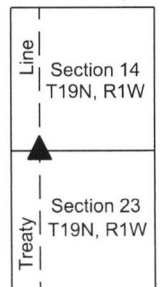


Kenneth E. Hedge
 Kenneth E. Hedge, County Surveyor

James S. Swift
 James S. Swift, IN LS 20200054

October 11, 2017

Center
Township



SECTION CORNER RECORD

NW 350-100

BOONE COUNTY SURVEYOR'S OFFICE

State Plane grid coordinates NAD83 (2011):

North: 1764130.54 East: 3119474.77 (U.S. survey feet)

Type of monument: Harrison, 4" disk 'Section Corner'

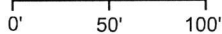
Depth: Two inches above adjacent ground

Indiana tie card references:

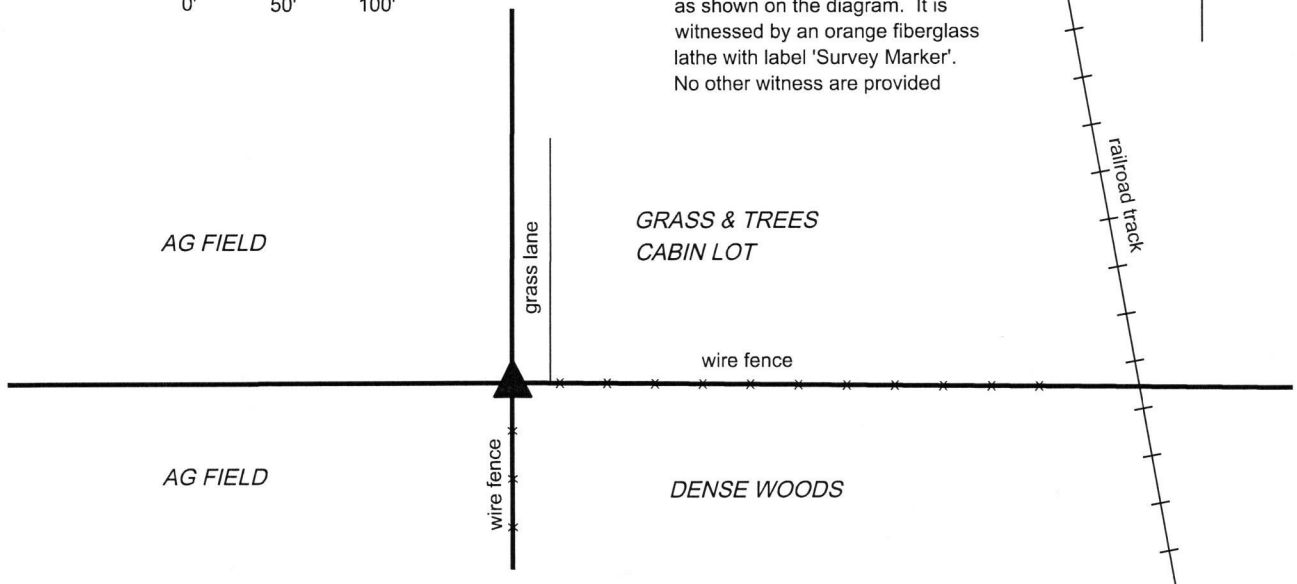
IN02_T19NR1W13_36 IN02_T19NR1W14_44

CORNER WITNESS DETAIL

SCALE 1" = 100'



The Harrison monument is at the northwest corner of a wooded lot, as shown on the diagram. It is witnessed by an orange fiberglass lathe with label 'Survey Marker'. No other witness are provided



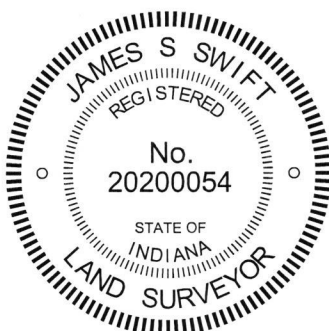
The Harrison monument was set in place of a stone found.

A BCS record of November 21-22, 1872 states, with respect to this corner, "Reest'b from stumps of trees. Set Rock 16x14x8 +."

No recent BCS tie cards were found referencing this corner.

Excavation was performed at this corner on November 21, 2017. Prior to excavation, a round metal post at the intersection of fences to the south and east was found leaning substantially towards the southeast. Excavation around the post revealed several rocks, including the stone described in the 1872 record. The record stone was found at 14 inches below grade at the west edge of the metal post. The stone, as found, was 16 inches tall by 14 inches N-S by 8 inches E-W. A clearly visible + mark was found near the top of the stone. The stone was approximately one foot west of the base of the metal post. The stone was removed during excavation, along with the metal post and the other rocks found in the vicinity. A Harrison monument was set in the position of the stone.

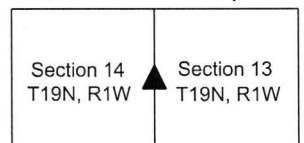
This corner was originally established as a wood post in 1822.



Kenneth E. Hedge
Kenneth E. Hedge, County Surveyor

James S. Swift
James S. Swift, IN LS 20200054
December 13, 2017

Center Township



SECTION CORNER RECORD

NW 400-100

BOONE COUNTY SURVEYOR'S OFFICE

State Plane grid coordinates NAD83 (2011):

North: 1766779.30 East: 3119479.23 (U.S. survey feet)

Type of monument: Harrison, 4" disk 'Section Corner'

Depth: Two inches above adjacent ground

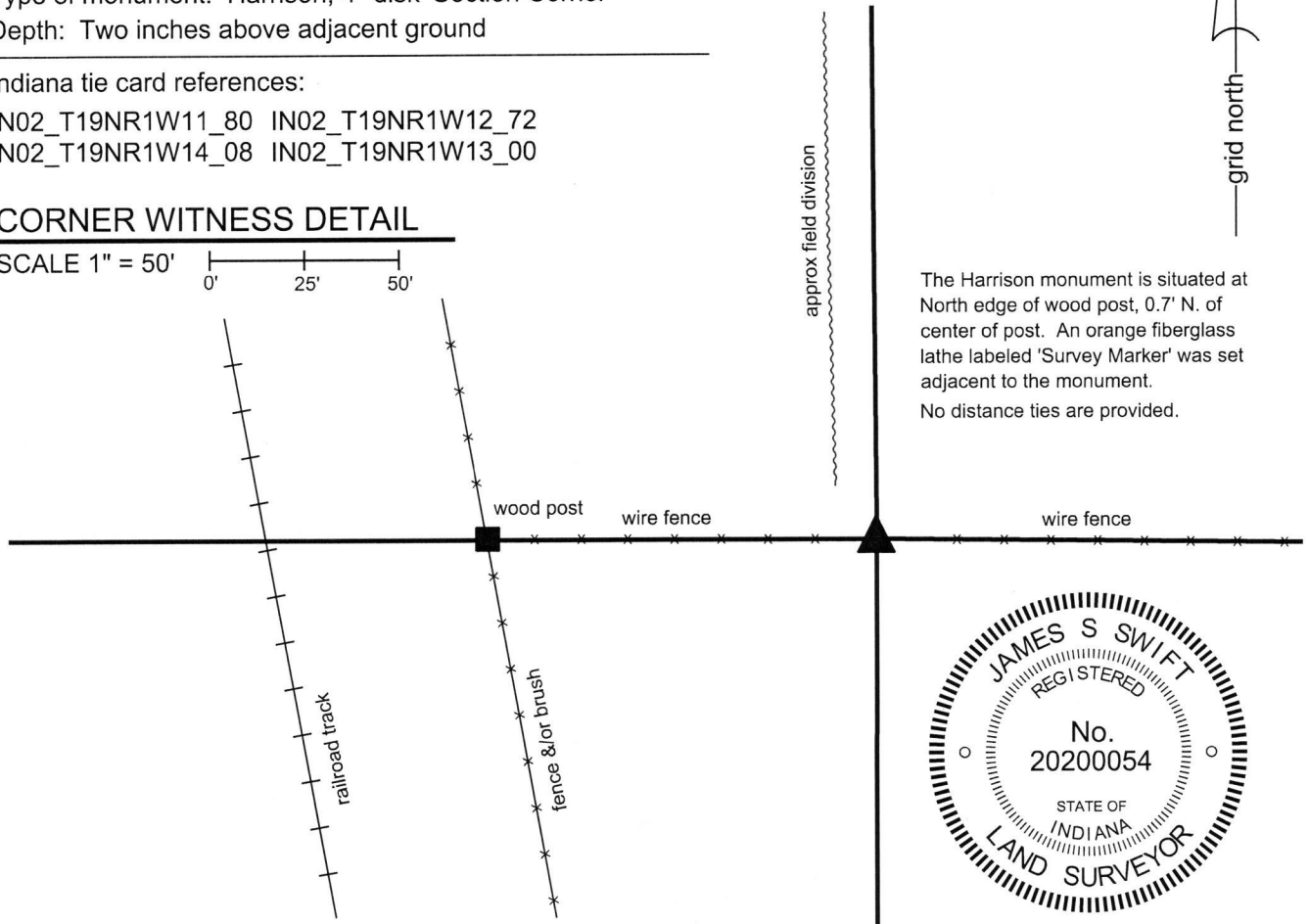
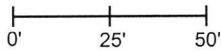
Indiana tie card references:

IN02_T19NR1W11_80 IN02_T19NR1W12_72

IN02_T19NR1W14_08 IN02_T19NR1W13_00

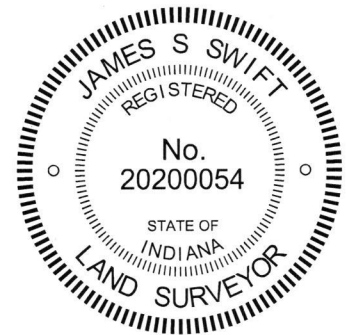
CORNER WITNESS DETAIL

SCALE 1" = 50'



The Harrison monument is situated at North edge of wood post, 0.7' N. of center of post. An orange fiberglass lathe labeled 'Survey Marker' was set adjacent to the monument.

No distance ties are provided.



The Harrison monument was set in place of a stone found.

No specific descriptions of this corner were found in the Boone County Surveyor's Record beyond the original establishment of the corner as a wood post in 1822. The corner is mentioned as the terminal point for measurements in records of 1834, 1836, 1850, and 1857, indicating that a monument of some form was present from which to measure at those times. No recent BCS tie cards were found referencing this corner. A recent survey by Ronald Wharry recorded as Instrument 201600012315 shows the corner as a wood post.

This corner was excavated on November 28-29, 2017. The wood post referenced on the Wharry survey was found in an east-west fence. The post had braces on the east and west sides of the post. The position of the post fits with the relative positions of proximate corners and fits with calls for the adjacent railroad right-of-way in the deed descriptions for neighboring properties to the west and southwest. The post appeared to be old but not ancient. Excavation around the post revealed numerous small rocks and two larger rocks. One rock along the northeast edge of the post was found to be situated in a haphazard orientation, not quite horizontal and oriented off cardinal directions. Another rock found at 6 inches deep along the north edge of the post bore the characteristics of corner stones found marking other corners throughout the county, being clearly vertical and oriented in cardinal directions. The stone was 11 inches tall, 7 inches east-west by 6 inches north-south with a distinct high point. The south side of the stone was flat and vertical. The stone could be interpreted as acting as a brace to the post but other brace rocks were not found around the post and the stone was not actually touching the post, being slightly north of the north edge of the post. The stone appeared in the field to be intended to mark the position of the corner and was held as such. The stone was removed and replaced with a Harrison monument in the same position. The monument is situated at the north edge of the post, 0.7 foot north of the center of the post.

Kenneth E. Hedge

 Kenneth E. Hedge, County Surveyor

James S. Swift

 James S. Swift, IN LS 20200054

December 13, 2017

Washington Twp

Center Twp

Section 11 T19N, R1W	Section 12 T19N, R1W
Section 14 T19N, R1W	Section 13 T19N, R1W

SECTION CORNER RECORD

NW 400-150

BOONE COUNTY SURVEYOR'S OFFICE

State Plane grid coordinates NAD83 (CORS96):

North: 1766778.10 East: 3116826.22 (U.S. survey feet)

Type of monument: Harrison, 4" disk 'Section Corner'

Depth: one inch below adjacent road surface

Indiana tie card references:

IN02_T19NR1W11_76

IN02_T19NR1W14_04

CORNER WITNESS DETAIL

SCALE 1" = 40'

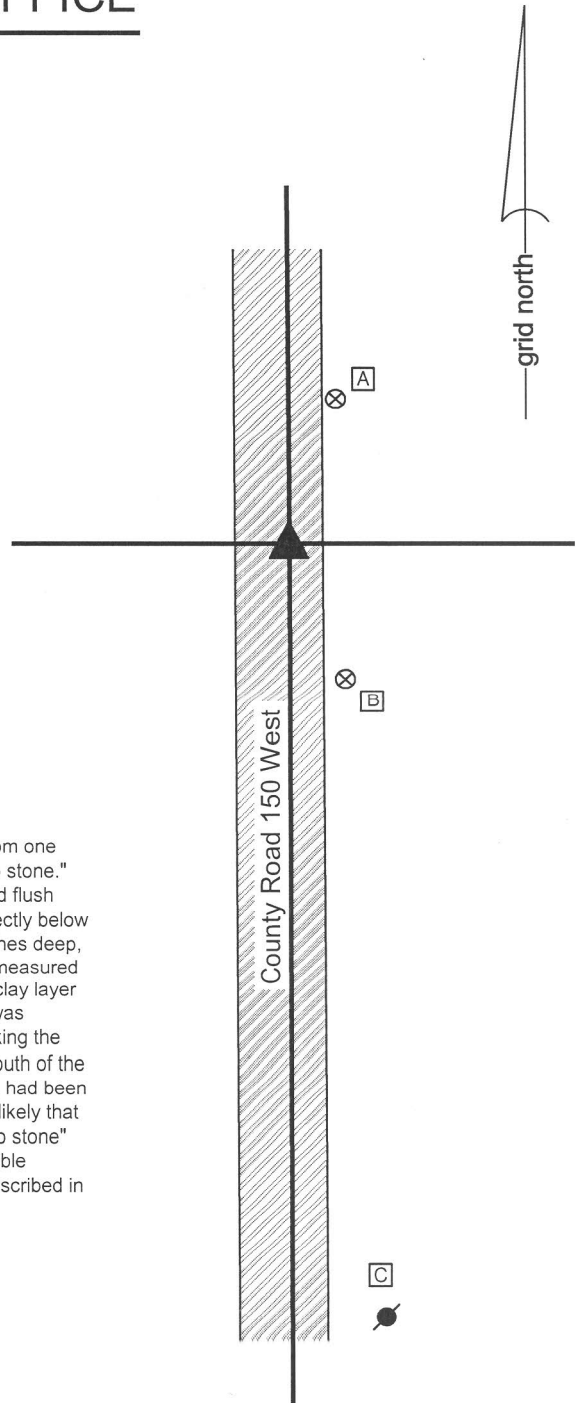


- A - Boone County witness mark, flush, 31.8'
- B - Boone County witness mark, flush, 30.6'
- C - Mag nail set in N.W. side power pole, 2' a.g., 161.9'

Boone County witness mark is a 3/8" diameter x 2' long rebar bearing a metal cap stamped "Boone County Witness Point."

The Harrison monument was set over a stone found.

A BCS record dated March 30-31, 1866 states, with respect to this corner, "Reest'd from one tree. Set Rock 16x10x8 marked + on top." A BCS tie card dated July 1968 states "No stone." This corner was excavated on June 6, 2014. Prior to excavation, a mag nail was found flush with the surface of the road. Excavation revealed a vertical section of railroad rail, directly below the nail. Further excavation revealed the stone described in the 1866 record at 15 inches deep, north and east of the nail and rail. With the top 9 inches of the stone exposed, it was measured to be 10 inches N-S by 8 inches E-W. The stone was vertical, fully embedded in the clay layer below the road and an etched "+" mark was visible on the top, north side. The stone was accepted as being the same stone described in the 1866 record and was held as marking the corner. A Harrison monument was set over the top, high point of the stone, slightly south of the etched "+" mark on the north side. The nail and rail, both removed during excavation, had been 2.4 feet south and 2.7 feet west of the top, high point of the stone. It is believed most likely that the rail had been set in association with the creation of the 1968 tie card. The term "no stone" on BCS tie cards from that era is interpreted to mean "no stone found, rail set at probable location of the corner." The statement "no stone" is clearly erroneous, as the stone described in the 1866 record was present and appeared to be undisturbed. This corner was originally established as wood post in 1822.

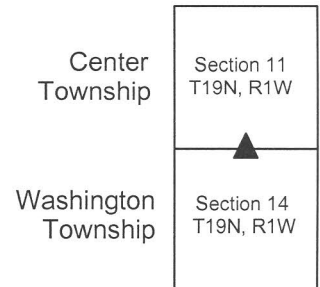


Kenneth E. Hedge

 Kenneth E. Hedge, County Surveyor

James S. Swift

 James S. Swift, IN LS 20200054
 March 27, 2015



PHOTOGRAPHIC DOCUMENTATION

Date of photography: June 6, 2014

The stone as originally found.



The stone from above.



The same picture as is shown above.
The etched "+" mark is enhanced for ease of visual detection and the high point is denoted with a black triangle.



For details and documentation, refer to related sheet "Section Corner Record."

View from above the stone looking south along County Road 150 West (Witt Road.)



View from the south, looking across the stone and north along County Road 150 West.

