

# SECTION CORNER RECORD

NE 300-500

## BOONE COUNTY SURVEYOR'S OFFICE

State Plane grid coordinates NAD83 (CORS96):

North: 1761778.18 East: 3150857.57 (U.S. survey feet)

Type of monument: Harrison, 4" disk 'Section Corner'

Depth: One inch below adjacent road surface

Indiana tie card references:

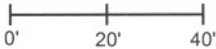
IN02\_T19NR1E13\_72

IN02\_T19NR1E14\_80

IN02\_T19NR1E24\_00

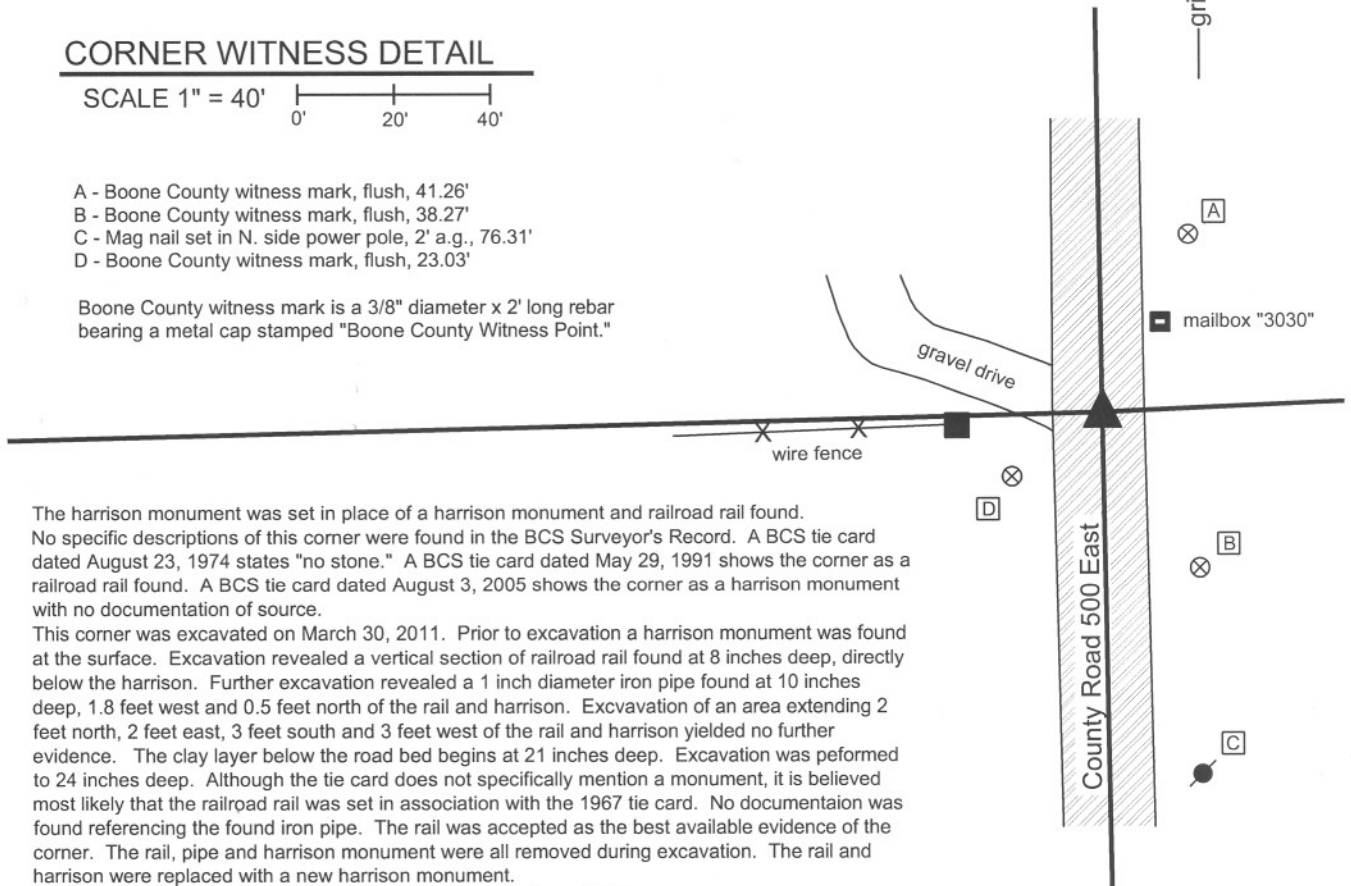
IN02\_T19NR1E23\_08

### CORNER WITNESS DETAIL

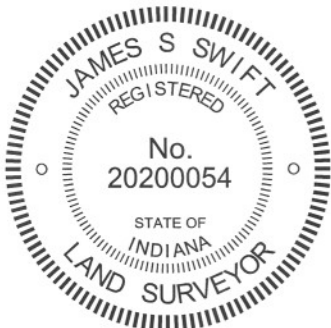
SCALE 1" = 40' 

- A - Boone County witness mark, flush, 41.26'
- B - Boone County witness mark, flush, 38.27'
- C - Mag nail set in N. side power pole, 2' a.g., 76.31'
- D - Boone County witness mark, flush, 23.03'

Boone County witness mark is a 3/8" diameter x 2' long rebar bearing a metal cap stamped "Boone County Witness Point."



The harrison monument was set in place of a harrison monument and railroad rail found. No specific descriptions of this corner were found in the BCS Surveyor's Record. A BCS tie card dated August 23, 1974 states "no stone." A BCS tie card dated May 29, 1991 shows the corner as a railroad rail found. A BCS tie card dated August 3, 2005 shows the corner as a harrison monument with no documentation of source. This corner was excavated on March 30, 2011. Prior to excavation a harrison monument was found at the surface. Excavation revealed a vertical section of railroad rail found at 8 inches deep, directly below the harrison. Further excavation revealed a 1 inch diameter iron pipe found at 10 inches deep, 1.8 feet west and 0.5 feet north of the rail and harrison. Excavation of an area extending 2 feet north, 2 feet east, 3 feet south and 3 feet west of the rail and harrison yielded no further evidence. The clay layer below the road bed begins at 21 inches deep. Excavation was performed to 24 inches deep. Although the tie card does not specifically mention a monument, it is believed most likely that the railroad rail was set in association with the 1967 tie card. No documentation was found referencing the found iron pipe. The rail was accepted as the best available evidence of the corner. The rail, pipe and harrison monument were all removed during excavation. The rail and harrison were replaced with a new harrison monument. This corner was originally established as a wood post in June, 1822.



*Kenneth E. Hedge*  
 Kenneth E. Hedge, County Surveyor

*James S. Swift*  
 James S. Swift, IN LS 20200054  
 March 1, 2012

Center Township

Section 14 T19N, R1E	Section 13 T19N, R1E
Section 23 T19N, R1E	Section 24 T19N, R1E

# SECTION CORNER RECORD

NE 300-550

## BOONE COUNTY SURVEYOR'S OFFICE

State Plane grid coordinates NAD83 (CORSS96):

North: 1761895.52 East: 3153535.34 (U.S. survey feet)

Type of monument: Harrison, 4" disk 'Section Corner'

Depth: six inches below adjacent gravel road surface

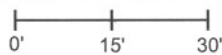
Indiana tie card references:

IN02\_T19NR1E13\_76

IN02\_T19NR1E24\_04

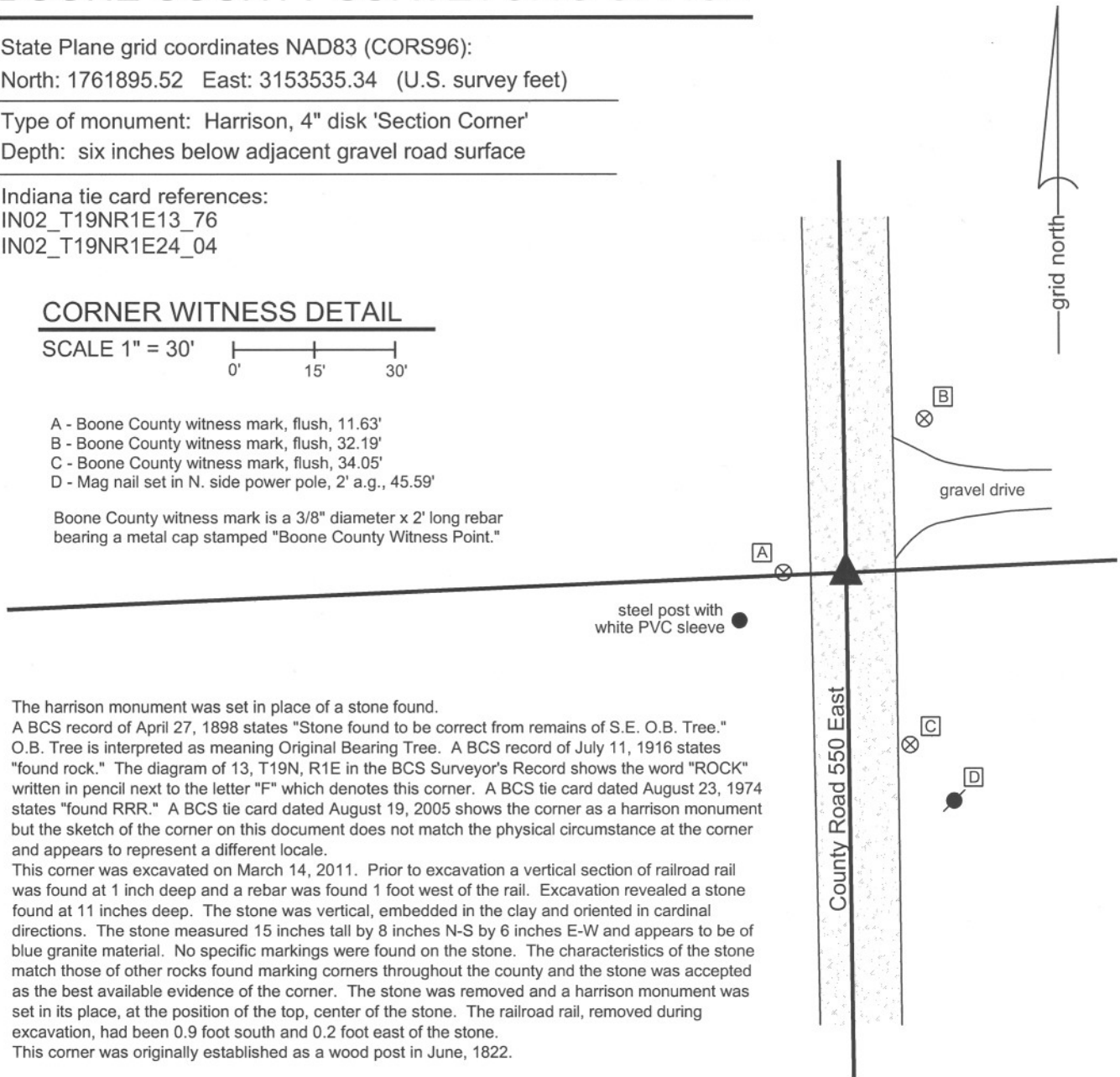
### CORNER WITNESS DETAIL

SCALE 1" = 30'



- A - Boone County witness mark, flush, 11.63'
- B - Boone County witness mark, flush, 32.19'
- C - Boone County witness mark, flush, 34.05'
- D - Mag nail set in N. side power pole, 2' a.g., 45.59'

Boone County witness mark is a 3/8" diameter x 2' long rebar bearing a metal cap stamped "Boone County Witness Point."

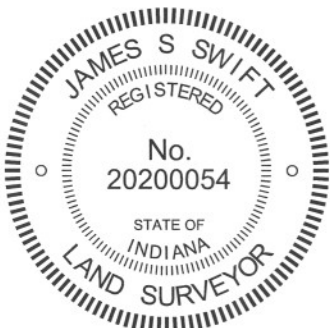


The harrison monument was set in place of a stone found.

A BCS record of April 27, 1898 states "Stone found to be correct from remains of S.E. O.B. Tree." O.B. Tree is interpreted as meaning Original Bearing Tree. A BCS record of July 11, 1916 states "found rock." The diagram of 13, T19N, R1E in the BCS Surveyor's Record shows the word "ROCK" written in pencil next to the letter "F" which denotes this corner. A BCS tie card dated August 23, 1974 states "found RRR." A BCS tie card dated August 19, 2005 shows the corner as a harrison monument but the sketch of the corner on this document does not match the physical circumstance at the corner and appears to represent a different locale.

This corner was excavated on March 14, 2011. Prior to excavation a vertical section of railroad rail was found at 1 inch deep and a rebar was found 1 foot west of the rail. Excavation revealed a stone found at 11 inches deep. The stone was vertical, embedded in the clay and oriented in cardinal directions. The stone measured 15 inches tall by 8 inches N-S by 6 inches E-W and appears to be of blue granite material. No specific markings were found on the stone. The characteristics of the stone match those of other rocks found marking corners throughout the county and the stone was accepted as the best available evidence of the corner. The stone was removed and a harrison monument was set in its place, at the position of the top, center of the stone. The railroad rail, removed during excavation, had been 0.9 foot south and 0.2 foot east of the stone.

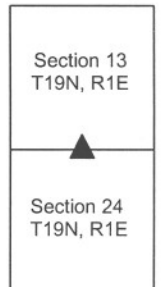
This corner was originally established as a wood post in June, 1822.



*Kenneth E. Hedge*  
 \_\_\_\_\_  
 Kenneth E. Hedge, County Surveyor

*James S. Swift*  
 \_\_\_\_\_  
 James S. Swift, IN LS 20200054  
 March 1, 2012

Center Twp



PHOTOGRAPHIC DOCUMENTATION

Date of photography: March 14, 2011

View of the stone as first exposed.



The stone partially exposed.



View from the north, looking across the stone and south along County Road 550 East.



The stone partially exposed and wahsed, showing the blue granite.



View of the stone from the east.



For details and documentation, refer to related sheet "Section Corner Record."

# SECTION CORNER RECORD

NE-300-600

## BOONE COUNTY SURVEYOR'S OFFICE

State Plane grid coordinates NAD83 (NSRS 2007):

Corner 1: North: 1762016.52 East: 3156220.05 (U.S. survey feet)

Corner 2: North: 1761973.59 East: 3156220.35 (U.S. survey feet)

Corners 1 & 2:

Type of monument: Harrison, 4" disk 'Section Corner'

Depth: One inch below adjacent road surface

Indiana tie card references:

IN02\_T19NR1E13\_80      IN02\_T19NR1E24\_08

IN02\_T19NR2E18\_72      IN02\_T19NR2E19\_00

- A - Boone County witness mark, flush, 28.11' to corner 1, 68.49' to corner 2.
- B - Mag nail set in N. side wood post, 1' a.g., 46.22' to corner 1, 19.39' to corner 2.
- C - Boone County witness mark, flush, 58.99' to corner 1, 17.82' to corner 2.
- D - Mag nail set in N. side power pole, 2' a.g., 41.07' to corner 1, 17.70' to corner 2.

S.E. Corner, Section 13  
N.E. Corner, Section 14  
T 19 N, R 1 E ①

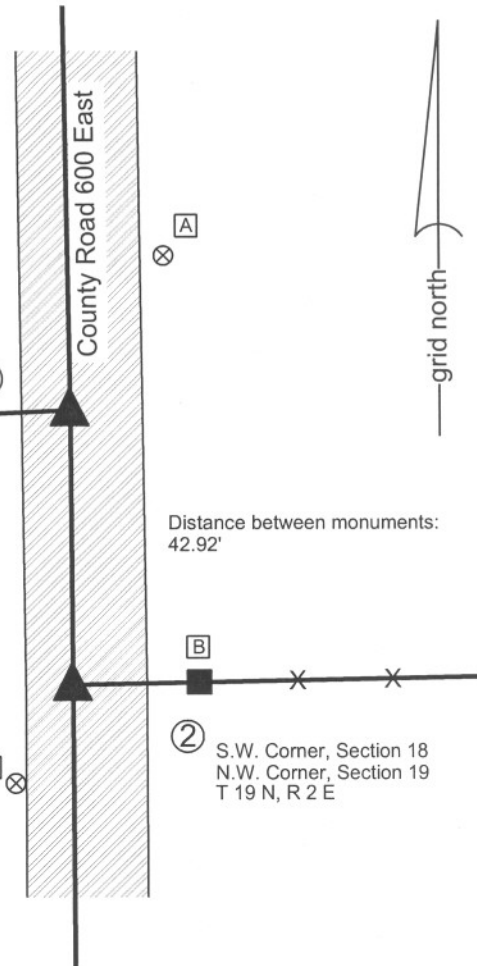
Distance between monuments:  
42.92'

② S.W. Corner, Section 18  
N.W. Corner, Section 19  
T 19 N, R 2 E

The harrison monuments were set in place of railroad rails found. A BCS record of November 23, 1871 states "Reestablished by lap 66 lk south from corner Sections 13 & 24 from trees. Set rock 17, 11 by 6 + on E. side." A BCS tie card dated October 14, 1971 states Stone found, RRR put in." BCS tie cards dated July 28, 2005 show both corners as marked by harrison monuments with no documentation of source. Corner 1 was excavated on June 3, 2010. Corner 2 was excavated on June 18, 2010. Prior to excavation, harrison monuments were found at both corners. Excavation of corner 1 revealed a railroad rail found at 7 inches deep, directly below the harrison monument. No other evidence was found and it was accepted that the rail was set in place of the stone found in 1971. Excavation of corner 2 revealed a railroad rail found at 10 inches deep, 0.1' east of the harrison. No other evidence was found and it was accepted that the rail at corner 2 was also set in place of the stone found in 1971. It is not specifically known whether stones were found at both corners in 1971, but the tie card shows ties to both corners. In any case, the rails were held as the best evidence of the position of the corners. The harrison monument at corner 1 was set in place of the rail. The harrison monument was set at the same north-south position as the rail, but was set on the line between corner 1 and the standard corner to the south, approximately 0.4 feet west of the rail. It is noted that the rails, as measured from the top center of each, were 42.92 feet apart, which distance matches the 2005 tie cards for the harrison monuments. The 1971 tie card shows a distance of 43.2 separating the corners. The record closing distance of 66 links is equal to 43.56 feet. The physical distance between the found rails was held as the closing distance, or "lap" as referred to in the 1871 record. Corner 1 was originally established as a wood post in July, 1819. Corner 2 was originally established as a wood post in July, 1821.

### CORNER WITNESS DETAIL

SCALE 1" = 30'      0'      15'      30'



*Kenneth E. Hedge*  
Kenneth E. Hedge, County Surveyor

*James S. Swift*  
James S. Swift, IN LS 20200054  
July 25, 2011

Center Twp	Marion Twp
Section 13 T19N, R1E	Section 18 T19N, R2E
Section 24 T19N, R1E	Section 19 T19N, R2E

# SECTION CORNER RECORD

NE 350-500

## BOONE COUNTY SURVEYOR'S OFFICE

State Plane grid coordinates NAD83 (NSRS 2007):

North: 1764415.40 East: 3150818.83 (U.S. survey feet)

Type of monument: Harrison, 4" disk 'Section Corner'

Depth: One inch below adjacent road surface

Indiana tie card references:

IN02\_T19NR1E13\_36 IN02\_T19NR1E14\_44

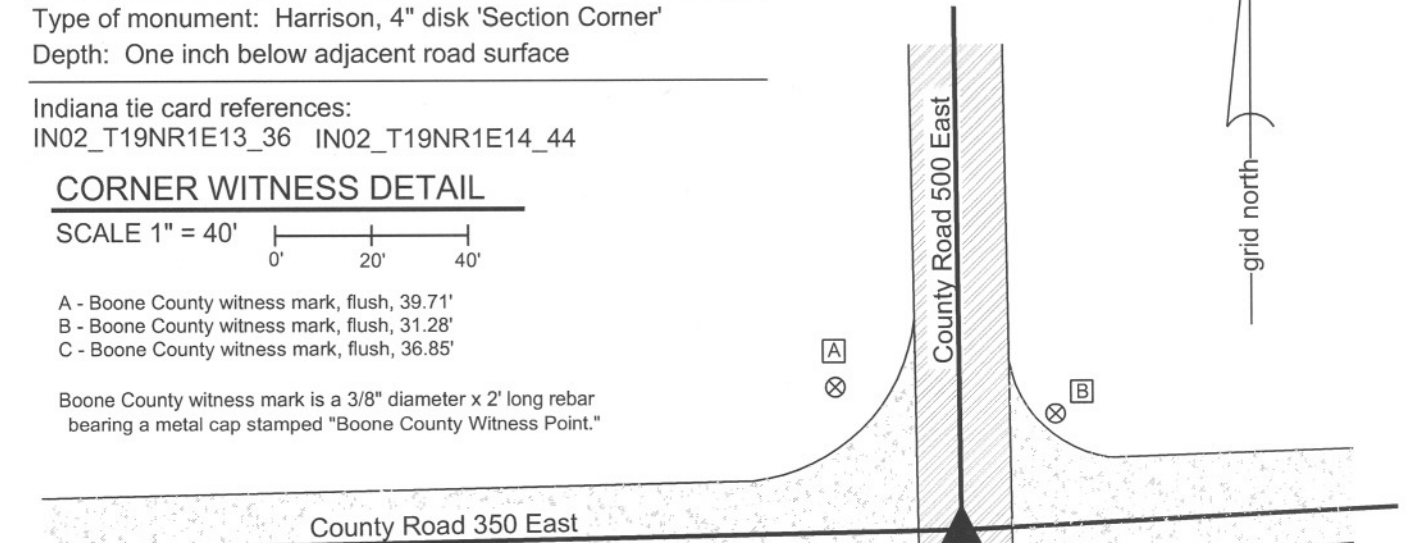
### CORNER WITNESS DETAIL

SCALE 1" = 40'



- A - Boone County witness mark, flush, 39.71'
- B - Boone County witness mark, flush, 31.28'
- C - Boone County witness mark, flush, 36.85'

Boone County witness mark is a 3/8" diameter x 2' long rebar bearing a metal cap stamped "Boone County Witness Point."



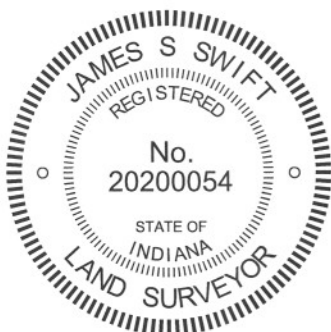
The harrison monument was set in place of a harrow tooth found.

A BCS record of April 27, 1898 states "Reestablished; drove harrow tooth, from which a rock, S 45° E, 45 lks; also a rock N 45° West, 45 links, each with hole in top and a small rock on top of each." A BCS tie card dated May 23, 1968 states "no stone, set 30" rail." A BCS tie card dated May 29, 1991 shows the corner as a rail found. A BCS tie card dated August 3, 2005 shows the corner as a harrison monument with no documentation of source.

This corner was excavated on September 21, 2011. Prior to excavation a harrison monument was found slightly above the surface of the road. The harrison was slightly askew and the lid was missing. Excavation revealed a railroad rail found at 9.5" deep, directly below the harrison. The railroad rail was removed and the area was scanned with a magnetic locator. A distinct reading was recorded south and west of the rail and excavation of a small hole at this point revealed a harrow tooth found at 19 inches deep. The harrow tooth is steel, 10 1/2 inches long with square shaft that is 1 inch on a side at the top, tapering to a dull point at the bottom. The harrow tooth was vertical, as found, with the large end up and the small end down. The harrow tooth was removed. The hole left where it had been was filled with concrete at the bottom of the column of concrete in which the harrison was placed. The harrison monument was set directly above the position of the harrow tooth as found. The harrow tooth is on display in the Boone County Surveyor's Office. As of publication of this document, the 1898 record of the harrow tooth represents the oldest known record of a metal monument marking a section corner in Boone County.

The found harrison monument and railroad rail, both removed during excavation had been 2.2 feet north and 1.1 feet east of the harrow tooth. The 1968 reference to "no stone, set 30" rail" is interpreted as evidence that the field crew on that date was not aware of the contents of the BCS Surveyor's Record. Rather than disregarding the harrow tooth as evidence, it is considered most likely that the field crew which set the rail did not know that the monument of record was not a stone, but a harrow tooth. In any case, the harrow tooth matches the 1898 record and was accepted as the oldest and best available evidence of the corner.

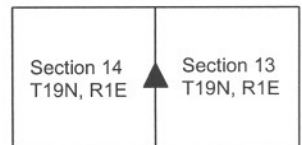
This corner was originally established as a wood post in June, 1822.



*Kenneth E. Hedge*  
 \_\_\_\_\_  
 Kenneth E. Hedge, County Surveyor

*James S. Swift*  
 \_\_\_\_\_  
 James S. Swift, IN LS 20200054  
 March 1, 2012

Center Township



PHOTOGRAPHIC DOCUMENTATION

Date of photography: September 21, 2011

The top of the harrow tooth. The monument was located with a metal detector after the railroad rail was removed, hence the small hole.



The harrow tooth removed from the hole and lying horizontally, situated next to the hole from which it was removed.



For details and documentation, refer to related sheet "Section Corner Record."

# SECTION CORNER RECORD

## BOONE COUNTY SURVEYOR'S OFFICE

NE 350-600

State Plane grid coordinates NAD83 (NSRS 2007):

North: 1764683.48 East: 3156175.82 (U.S. survey feet) (Corner 1 only)

Type of monument: Harrison, 4" disk 'Section Corner' (Corner 1 only)

Depth: One inch below adjacent road surface

Indiana tie card references:

IN02\_T19NR1E13\_44

IN02\_T19NR2E18\_36

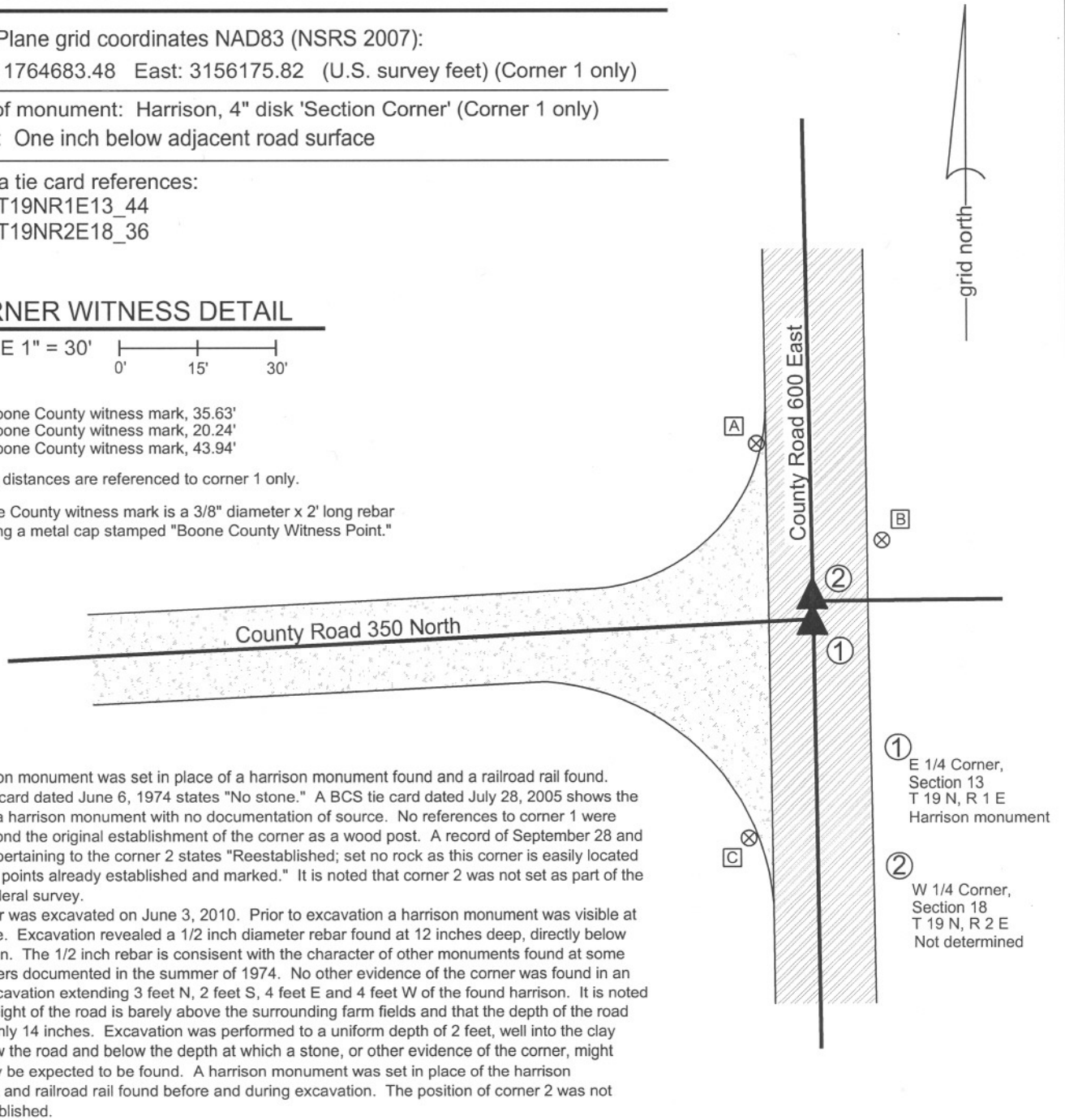
### CORNER WITNESS DETAIL

SCALE 1" = 30'

- A - Boone County witness mark, 35.63'
- A - Boone County witness mark, 20.24'
- A - Boone County witness mark, 43.94'

All tie distances are referenced to corner 1 only.

Boone County witness mark is a 3/8" diameter x 2' long rebar bearing a metal cap stamped "Boone County Witness Point."



The harrison monument was set in place of a harrison monument found and a railroad rail found. A BCS tie card dated June 6, 1974 states "No stone." A BCS tie card dated July 28, 2005 shows the corner as a harrison monument with no documentation of source. No references to corner 1 were found beyond the original establishment of the corner as a wood post. A record of September 28 and 29, 1910, pertaining to the corner 2 states "Reestablished; set no rock as this corner is easily located from other points already established and marked." It is noted that corner 2 was not set as part of the original federal survey.

This corner was excavated on June 3, 2010. Prior to excavation a harrison monument was visible at the surface. Excavation revealed a 1/2 inch diameter rebar found at 12 inches deep, directly below the harrison. The 1/2 inch rebar is consistent with the character of other monuments found at some other corners documented in the summer of 1974. No other evidence of the corner was found in an area of excavation extending 3 feet N, 2 feet S, 4 feet E and 4 feet W of the found harrison. It is noted that the height of the road is barely above the surrounding farm fields and that the depth of the road bed was only 14 inches. Excavation was performed to a uniform depth of 2 feet, well into the clay layer below the road and below the depth at which a stone, or other evidence of the corner, might reasonably be expected to be found. A harrison monument was set in place of the harrison monument and railroad rail found before and during excavation. The position of corner 2 was not firmly established.



*Kenneth E. Hedge*  
Kenneth E. Hedge, County Surveyor

*James S. Swift*  
James S. Swift, IN LS 20200054  
July 25, 2011

Center Twp	Union Twp
Section 13 T19N, R1E	Section 18 T19N, R2E

# SECTION CORNER RECORD

## BOONE COUNTY SURVEYOR'S OFFICE

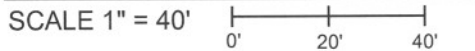
NE 400-500

State Plane grid coordinates NAD83 (CORS96):  
 North: 1767069.82 East: 1767069.82 (U.S. survey feet)

Type of monument: Harrison, 4" disk 'Section Corner'  
 Depth: One inch below adjacent road surface

Indiana tie card references:  
 IN02\_T19NR1E11\_80 IN02\_T19NR1E12\_72  
 IN02\_T19NR1E14\_08 IN02\_T19NR1E13\_00

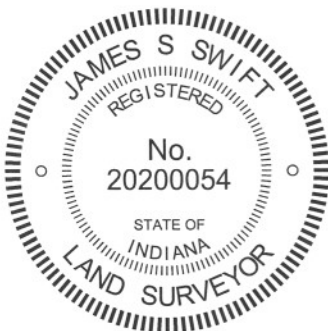
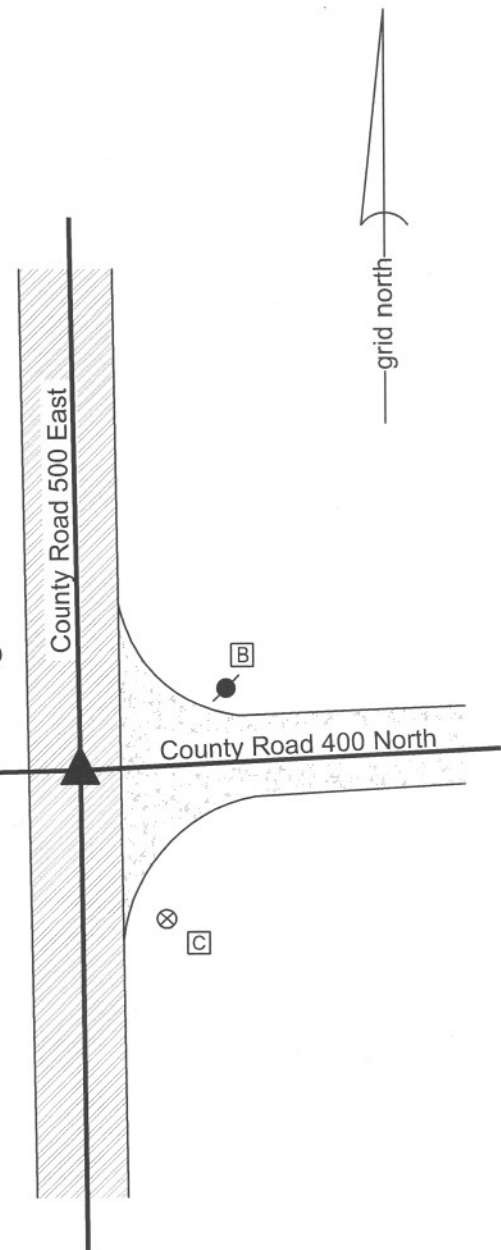
### CORNER WITNESS DETAIL



- A - Boone County witness mark, flush, 30.34'
- B - Mag nail set in W. side power pole, 2' a.g. 33.24'
- C - Boone County witness mark, flush, 35.70'

Boone County witness mark is a 3/8" diameter x 2' long rebar bearing a metal cap stamped "Boone County Witness Point."

The harrison monument was set over a stone found.  
 A BCS record of June 26-27, 1865 states Reestablished from Oak B.T. Set two rocks one 5.3.2 in (two notches in sharp corner). Top rock 13.12.6 in. + on side."  
 A BCS tie card dated August 15, 1868 states "no stone." A BCS tie card dated May 29, 1991 shows the corner as a rail found. A BCS tie card dated August 3, 2005 shows the corner as a harrison monument with no documentation of source.  
 This corner was excavated on April 6, 2011. Prior to excavation a harrison monument was found at the surface. Excavation revealed a railroad rail found at 5 inches deep, below the harrison. It is most likely that the rail was set in association with the creation of the 1968 tie card. Further excavation revealed the stone described in the 1865 record at 22 inches deep. The stone measures 12 inches E-W by 6 inches N-S by 13 inches tall. The rock has a rough surface. A vague chiseled + was evident on the N. side. The stone was left in place and the harrison monument was set over the top of the stone, in line with the chiseled +. The harrison monument and railroad rail, both removed during excavation, had been 0.9 foot north and 1.5 feet west of the stone.  
 This corner was originally established as a wood post in June, 1822.



*Kenneth E. Hedge*  
 Kenneth E. Hedge, County Surveyor

*James S. Swift*  
 James S. Swift, IN LS 20200054  
 March 1, 2012

Clinton Twp	Section 11 T19N, R1E	Section 12 T19N, R1E
Center Twp	Section 14 T19N, R1E	Section 13 T19N, R1E



PHOTOGRAPHIC DOCUMENTATION

Date of photography: April 6, 2011

View from the west looking across the stone (in shadows) and east along County Road 400 North.



View of the stone as first exposed.



The stone from the north.



The stone from the south.



For details and documentation, refer to related sheet "Section Corner Record."

# SECTION CORNER RECORD

# NE 400-550

## BOONE COUNTY SURVEYOR'S OFFICE

State Plane grid coordinates NAD83 (CORS96):

North: 1767199.29 East: 3153454.86 (U.S. survey feet)

Type of monument: Harrison, 4" disk 'Section Corner'

Depth: six inches below adjacent gravel road surface

Indiana tie card references:

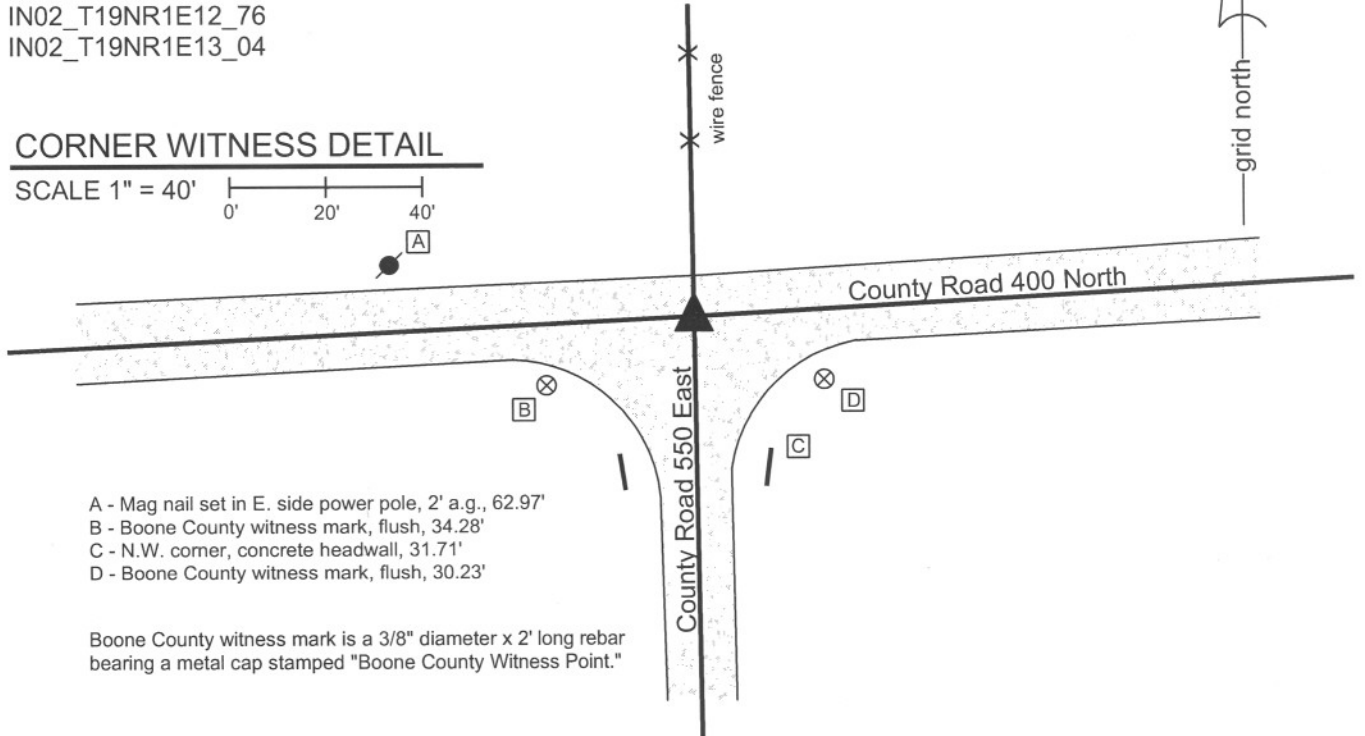
IN02\_T19NR1E12\_76

IN02\_T19NR1E13\_04

### CORNER WITNESS DETAIL

SCALE 1" = 40'

0' 20' 40'



- A - Mag nail set in E. side power pole, 2' a.g., 62.97'
- B - Boone County witness mark, flush, 34.28'
- C - N.W. corner, concrete headwall, 31.71'
- D - Boone County witness mark, flush, 30.23'

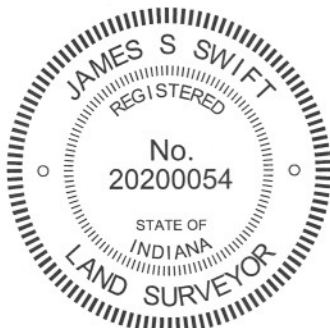
Boone County witness mark is a 3/8" diameter x 2' long rebar bearing a metal cap stamped "Boone County Witness Point."

The harrison monument was set over a stone found.

A BCS record of December 11, 1871 states "Reestablished from North Ash. Set Rough Rock 20.10. 3 to 7th +." A BCS Record of June 29, 1889 states "Straightened rock here. Top broken off. S.W. tree here (stump)." A BCS tie card dated August 22, 1974 states "No stone found." A BCS tie card dated May 22, 1975 states "No stone found - set rod." A BCS tie card dated July 27, 2005 shows the corner as a harrison monument with no documentation of source.

This corner was excavated on March 14, 2011. Prior to excavation a harrison monument was found at 2 inches deep. Excavation revealed a stone found at 12 inches deep. The stone measured 10 inches E-W by 7 inches N-S by 9 inches tall. The top half of the stone was in the fill material of the road and the bottom half was embedded in the clay layer below the road bed. The stone was removed and another stone was found directly below it. The lower stone measured 12 inches tall at the northwest edge. With 8 inches of the top of the stone exposed, it measured approximately 10 inches E-W by 8 inches N-S. The stone was definitely of a rough surface. Another smaller stone was found next to it on the north side. The rough stone appeared to be the same stone described in the 1871 record, less the broken top per the 1889 record. If this stone were 20 inches tall it would protrude approximately 3 - 4 inches out of the clay layer into the road bed, which is consistent with other found stones from the same era. The "rough" qualities of the stone make it hard to measure and the 10 by 8 measurements are quite close to the record dimensions of 10 by 3 to 7th. This stone was accepted as marking the corner and was left in place. The top 3 inches of the stone were encased in concrete and the harrison monument was set over the top, center of the stone. The harrison monument, removed during excavation, had been 0.5 foot south and 0.5 foot west of the stone.

This corner was originally established as a wod post in June, 1822.



*Kenneth E. Hedge*  
Kenneth E. Hedge, County Surveyor

*James S. Swift*  
James S. Swift, IN LS 20200054  
March 1, 2012

Clinton Twp

Section 12  
T19N, R1E

Center Twp

Section 13  
T19N, R1E

PHOTOGRAPHIC DOCUMENTATION

Date of photography: March 14, 2011

The first stone found from the above and west.



The lower, record, stone from above and west.



View from the west, looking across the first stone found and east along County Road 400 North.



The lower, record, stone from above and south.



The lower, record, stone from above.



For details and documentation, refer to related sheet "Section Corner Record."

# SECTION CORNER RECORD

NE 400-600

## BOONE COUNTY SURVEYOR'S OFFICE

State Plane grid coordinates NAD83 (NSRS 2007):

Corner 1: North: 1767343.74 East: 3156123.38 (U.S. survey feet)  
 Corner 2: North: 1767394.12 East: 3156121.99 (U.S. survey feet)

### CORNER WITNESS DETAIL

SCALE 1" = 40'  
 0' 20' 40'

Corner 1:

Type of monument: Harrison, 4" disk 'Section Corner'  
 Depth: One inch below adjacent road surface

Corner 2:

Type of monument: Harrison, 4" disk 'Section Corner'  
 Depth: One inch below adjacent road surface

Indiana tie card references:

IN02\_T19NR1E12\_80 IN02\_T19NR1E13\_08  
 IN02\_T19NR2E07\_72 IN02\_T19NR2E18\_00

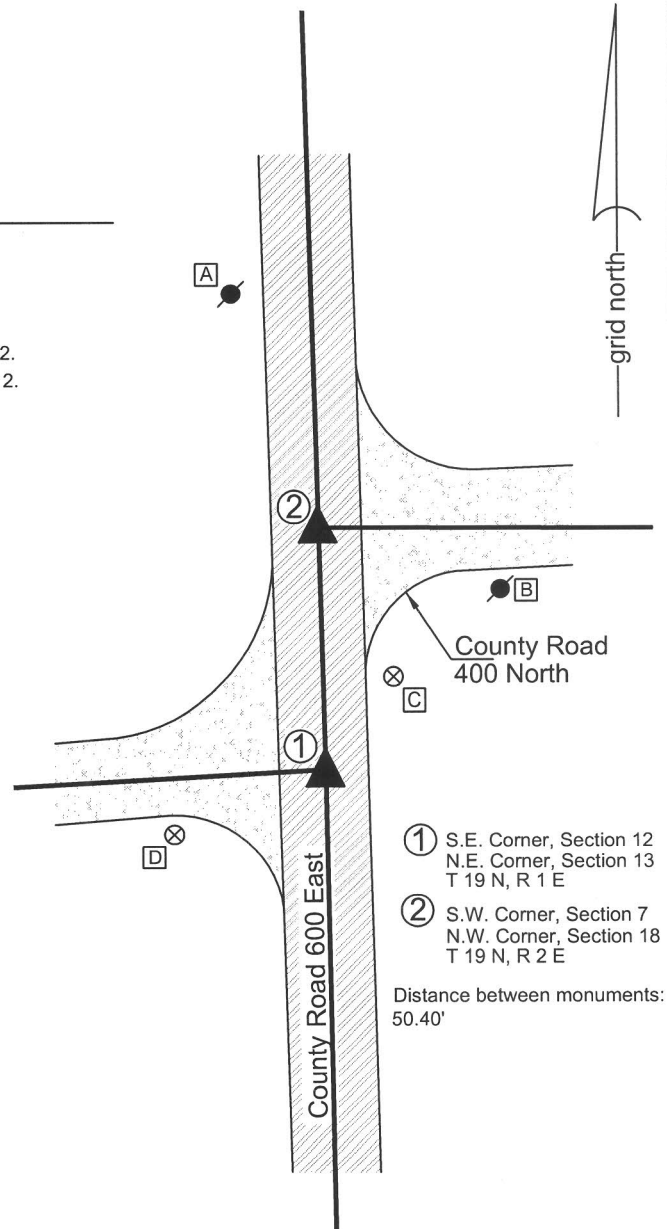
- A - Mag nail set in S. side power pole, 2' a.g., 98.81' to corner 1, 49.84' to corner 2.
- B - Mag nail set in W. side power pole, 2' a.g., 51.09' to corner 1, 38.56' to corner 2.
- C - Boone County witness mark, flush, 23.64' to corner 1, 35.13' to corner 2.
- D - Boone County witness mark, flush, 34.16' to corner 1, 70.56' to corner 2.

Boone County witness mark is a 3/8" diameter x 2' long rebar bearing a metal cap stamped "Boone County Witness Point."

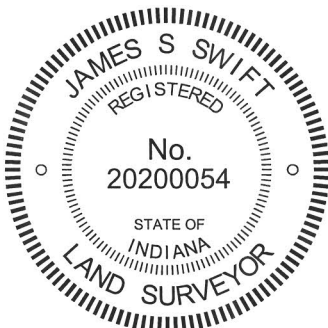
A harrison monument was set in place of a stone at corner 1 and over a stone at corner 2.

A BCS record of November 7, 1872 pertaining to corner 2 states "Reestablished from the trees 75 lks North of corner Sects 12 & 13. Set a Rock 22.16 by 10 marked +." A BCS tie card dated July 28, 2005 shows both corners as harrison monuments with no documentation of source.

These corners were excavated on June 16, 2010. Prior to excavation, harrison monuments were visible at the surface of the road. Corner 2 was excavated first. Excavation revealed no further evidence directly below the harrison monument, but the record stone described in 1872 was found slightly south and west of the harrison. The stone is embedded in the clay layer below the road at 17 inches deep and measures 22 inches tall by 17 inches N-S by 10 inches E-W with a clearly visible mark etched on the top near the east side of the stone. The mark appears to be a "+". The E-W part of the "+" is fully visible but only the N section of the N-S part is visible. While the stone at corner 2 was still exposed, corner 1 was excavated. Excavation at this corner revealed a stone found at distance slightly longer than the reported 75 links. This stone was also embedded in the clay layer below the road. The stone was removed and measured, being 4 inches tall by 6 inches E-W by 9 inches N-S. The harrison monument at corner 2 was set directly over the etched mark on the top of the stone. The harrison monument at corner 1 was set in place of the approximate top, center of the position of the stone and specifically on the range line as determined by corner 2. Corner 1 is 0.3 foot north of the position of the former harrison monument and corner 2 is 0.7 feet south and 0.3 feet west of the position of the former harrison monument. It is noted that the original recorded closing distance between the corners is 77 links (50.8'), the 1872 record reports 75 links (49.5') links and the distance measured is 50.40 feet. Corner 1 was originally established as a wood post in 1819. Corner 2 was originally established as a wood post in 1821.



- ① S.E. Corner, Section 12  
N.E. Corner, Section 13  
T 19 N, R 1 E
  - ② S.W. Corner, Section 7  
N.W. Corner, Section 18  
T 19 N, R 2 E
- Distance between monuments:  
50.40'



*Kenneth E. Hedge*  
 Kenneth E. Hedge, County Surveyor

*James S. Swift*  
 James S. Swift, IN LS 20200054  
 July 25, 2011

	Clinton Twp	Marion Twp
Clinton Twp	Section 12 T19N, R1E	Section 7 T19N, R2E
Center Twp	Section 13 T19N, R1E	Section 18 T19N, R2E

PHOTOGRAPHIC DOCUMENTATION

Date of photography: June 16, 2010

The stone at the closing corner (corner 2) from above and west.



The stone at corner 2 from above and south.



View from the west, looking across the stone at corner 2 and east along County Road 400 North.



The stone at corner 2 from above. Note the etched mark on the top of the stone.



The stone at the standard corner (corner 1) from above and east.



For details and documentation, refer to related sheet "Section Corner Record."