

SECTION CORNER RECORD

BOONE COUNTY SURVEYOR'S OFFICE

SE 200-500

State Plane grid coordinates NAD83 (NSRS 2007):
 North: 1735696.96 East: 3151149.53 (U.S. survey feet)

Type of monument: Harrison, 4" disk 'Section Corner'
 Depth: One inch below adjacent road surface

Indiana tie card references:
 IN02_T18NR1E11_80 IN02_T18NR1E12_76
 IN02_T18NR1E14_08 IN02_T18NR1E13_00

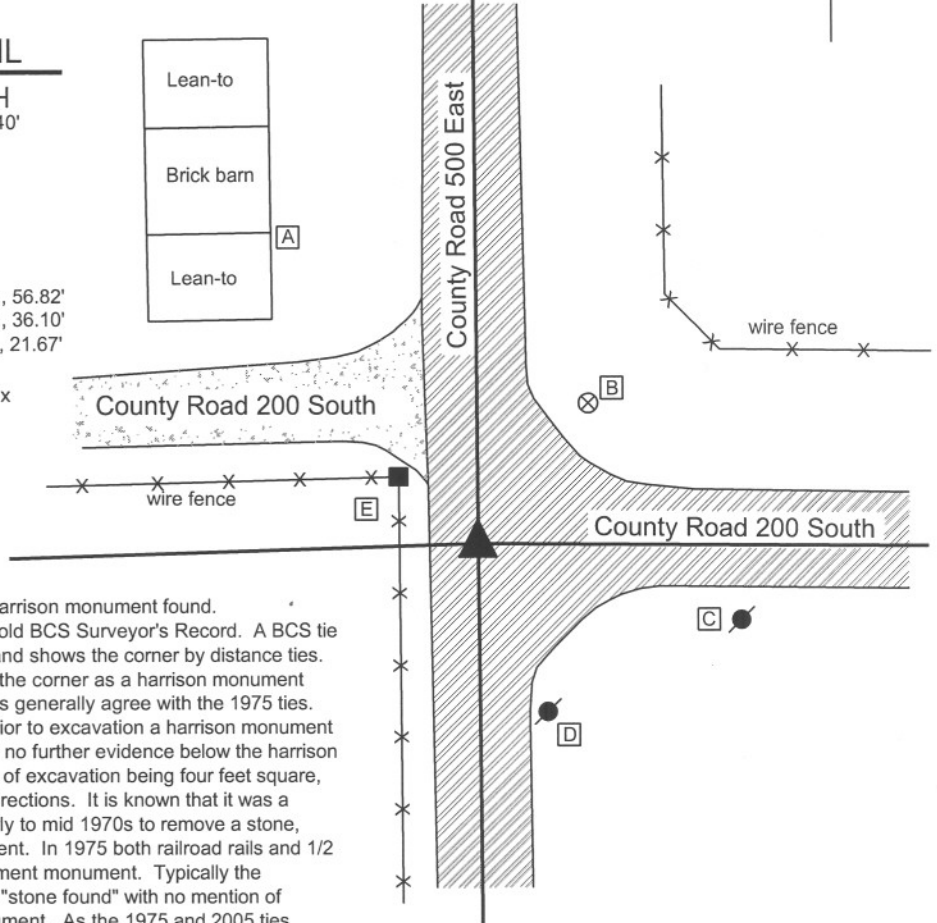


CORNER WITNESS DETAIL

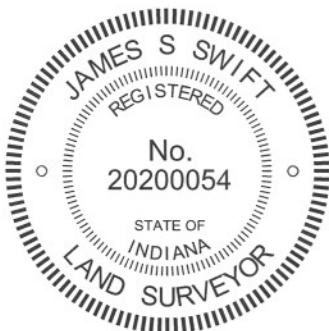
SCALE 1" = 40'

- A - S.E. corner, brick portion of barn, 78.00'
- B - Boone County witness mark, flush 37.15'
- C - Mag nail set in N. side power pole, 2.0' a.g., 56.82'
- D - Mag nail set in N. side power pole, 2.0' a.g., 36.10'
- E - Mag nail set in E. side power pole, 1.8' a.g., 21.67'

Boone County witness mark is a 3/8" diameter x 2' long rebar bearing a metal cap stamped "Boone County Witness Point."



The harrison monument was set in place of a harrison monument found. This corner is not specifically mentioned in the old BCS Surveyor's Record. A BCS tie card dated August, 1975 states "stone found" and shows the corner by distance ties. A BCS tie card dated October 15, 2005 shows the corner as a harrison monument with no documentation of source. The 2005 ties generally agree with the 1975 ties. This corner was excavated on July 9, 2008. Prior to excavation a harrison monument was found at the surface. Excavation revealed no further evidence below the harrison monument, nor any further evidence in an area of excavation being four feet square, centered on the harrison, oriented in cardinal directions. It is known that it was a common practice for BCS field crews in the early to mid 1970s to remove a stone, when found and replace it with a metal monument. In 1975 both railroad rails and 1/2 inch diameter rebars were used as the replacement monument. Typically the documentation for such an event simply states "stone found" with no mention of removing the stone or establishing a new monument. As the 1975 and 2005 ties generally agree, it is assumed that the harrison monument was set in place of a monument which was set in place of the stone, which was removed. The previous harrison was replaced with a new harrison monument at the same position. This corner was originally established as a wood post in 1820.



Kenneth E. Hedge
 Kenneth E. Hedge, County Surveyor

James S. Swift
 James S. Swift, IN LS 20200054
 March 11, 2009, revised March, 2012

Worth Twp

Section 11 T18N, R1E	Section 12 T18N, R1E
Section 14 T18N, R1E	Section 13 T18N, R1E

SECTION CORNER RECORD

SE 200-550

BOONE COUNTY SURVEYOR'S OFFICE

State Plane grid coordinates NAD83 (NSRS 2007):

North: 1735680.24 East: 3153814.77 (U.S. survey feet)

Type of monument: Harrison, 4" disk 'Section Corner'

Depth: One inch below adjacent road surface

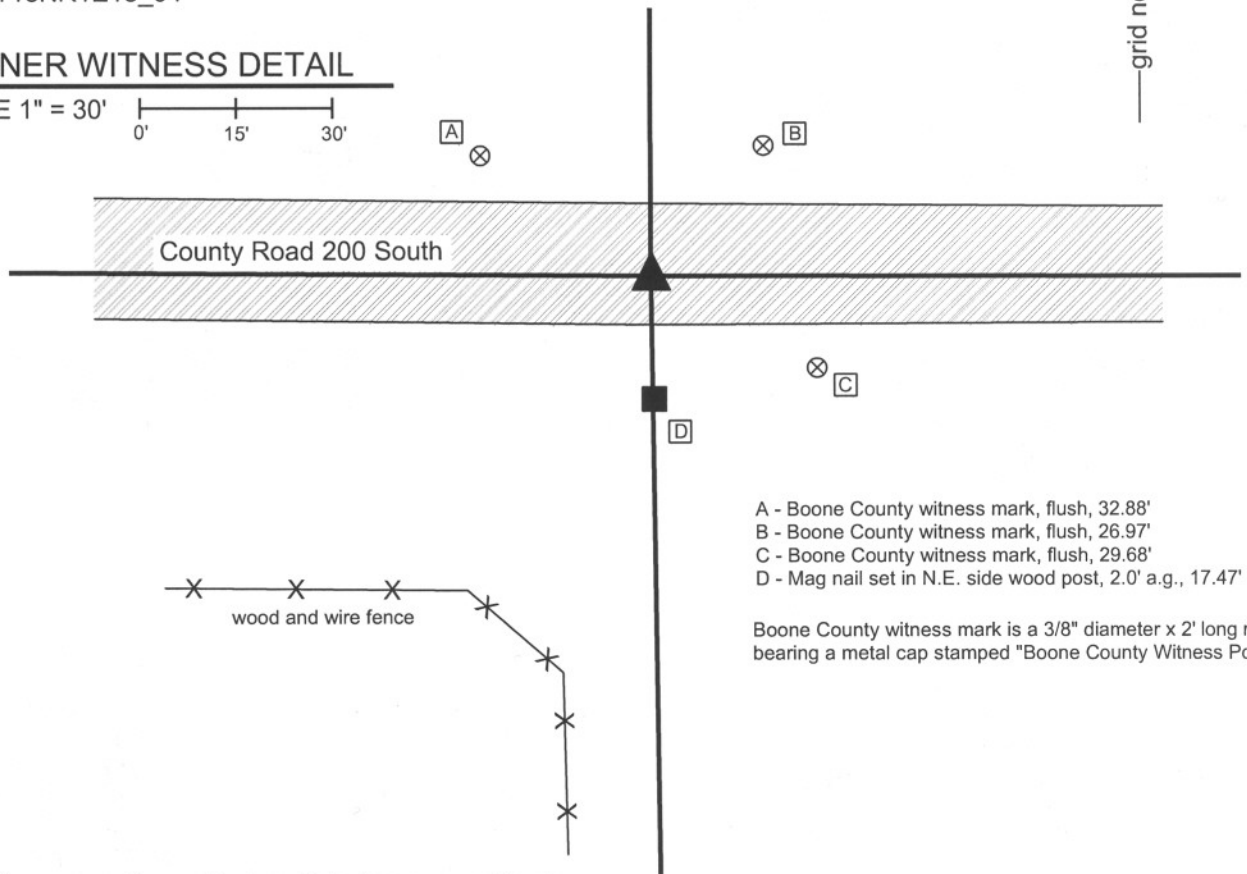
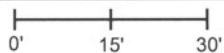
Indiana tie card references:

IN02_T18NR1E12_76

IN02_T18NR1E13_04

CORNER WITNESS DETAIL

SCALE 1" = 30'



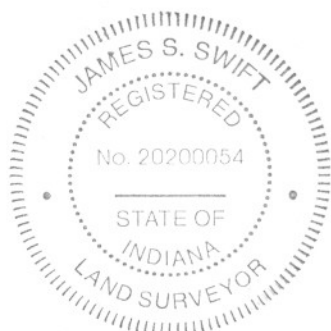
- A - Boone County witness mark, flush, 32.88'
- B - Boone County witness mark, flush, 26.97'
- C - Boone County witness mark, flush, 29.68'
- D - Mag nail set in N.E. side wood post, 2.0' a.g., 17.47'

Boone County witness mark is a 3/8" diameter x 2' long rebar bearing a metal cap stamped "Boone County Witness Point."

The harrison monument was set in place of a harrison monument found.

No old BCS stone records were found for this corner. A BCS tie card dated June 10, 1991 shows the corner as a 5/8 inch rebar 1.3 feet south of the center of County Road 200 South and slightly west of the north and south fences on each side of the road. A BCS tie card dated October 25, 2005 shows the corner as a harrison monument with no documentation, but with one tie similar to the one remaining tie from the 1991 tie card. This corner was excavated on June 9, 2008. Prior to excavation a harrison monument was visible at 2 inches deep, approximately 2 feet south of the center of the road. A hole 5 feet N-S by 5 feet E-W was excavated, extending 3.5 feet north and 3 feet east of the harrison. No rebar, corner stone or any other monuments were found. Numerous fist sized rocks were found in the base of the road, below which the clay layer begins at approximately 15 inches. It appears that the previous harrison monument replaced the rebar. A new harrison monument was replaced in the position of the previously existing harrison.

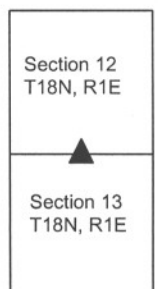
This corner was originally established as a wood post in June, 1820.



Kenneth E. Hedge
Kenneth E. Hedge, County Surveyor

James S. Swift
James S. Swift, IN LS 20200054
March 11, 2009

Worth Township



SECTION CORNER RECORD

SE 200-600

BOONE COUNTY SURVEYOR'S OFFICE

State Plane grid coordinates NAD83 (NSRS 2007):

North: 1735675.03 East: 3156486.41 (U.S. survey feet)

Type of monument: Harrison, 4" disk 'Section Corner'

Depth: One inch below adjacent road surface

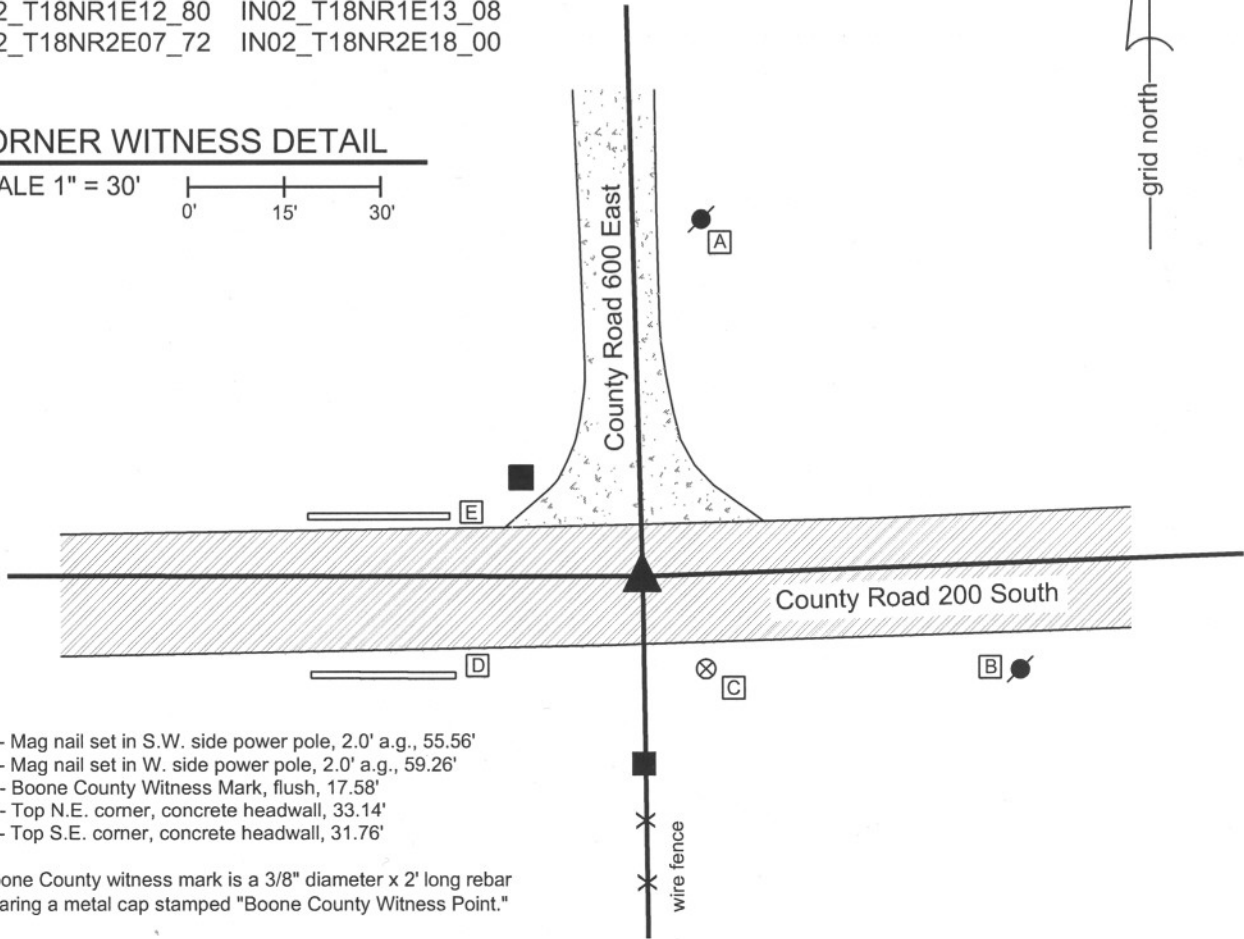
Indiana tie card references:

IN02_T18NR1E12_80 IN02_T18NR1E13_08

IN02_T18NR2E07_72 IN02_T18NR2E18_00

CORNER WITNESS DETAIL

SCALE 1" = 30'



- A - Mag nail set in S.W. side power pole, 2.0' a.g., 55.56'
- B - Mag nail set in W. side power pole, 2.0' a.g., 59.26'
- C - Boone County Witness Mark, flush, 17.58'
- D - Top N.E. corner, concrete headwall, 33.14'
- E - Top S.E. corner, concrete headwall, 31.76'

Boone County witness mark is a 3/8" diameter x 2' long rebar bearing a metal cap stamped "Boone County Witness Point."

The harrison monument was set over the top, center of a stone found.

A BCS record of April 26, 1865 states "Reestablished from Oak tree stump. Set Rock 10.20.9 in Marked T..."

This corner was excavated on May 30, 2008. Prior to excavation no monuments were visible nor were any detected with a magnetic locator. Excavation centered on the approximate intersection of the centers of the two county roads yielded the record stone found at a depth of 14 inches below the road surface. The stone measures 10 inches NS by 9 inches EW and is 17 inches tall, set vertically, well embedded in the clay base layer below the road. No specific markings were observed on the stone. The stone may have been broken off at some point, as it is slightly shorter than the record height and does not bear the described markings. The harrison monument was set directly over the top of the stone.

This corner was originally established as a wood post in 1819. No record offset was recorded as the closing corner is coincident with the standard corner.



Kenneth E. Hedge
 Kenneth E. Hedge, County Surveyor

James S. Swift
 James S. Swift, IN LS 20200054
 March 11, 2009

Worth Township

Section 12 T18N, R1E	Section 7 T18N, R2E
Section 13 T18N, R1E	Section 18 T18N, R2E

PHOTOGRAPHIC DOCUMENTATION

Date of photography: May 30, 2008

Corner stone, view from West.

Note top of clay layer exposed and visible around stone.



Corner stone, view from South.



For details and documentation, refer to related sheet "Section Corner Record."

SECTION CORNER RECORD

SE 250-500

BOONE COUNTY SURVEYOR'S OFFICE

State Plane grid coordinates NAD83 (NSRS 2007):

North: 1733038.80 East: 3151176.18 (U.S. survey feet)

Type of monument: Harrison, 4" disk 'Section Corner'

Depth: One inch below adjacent road surface

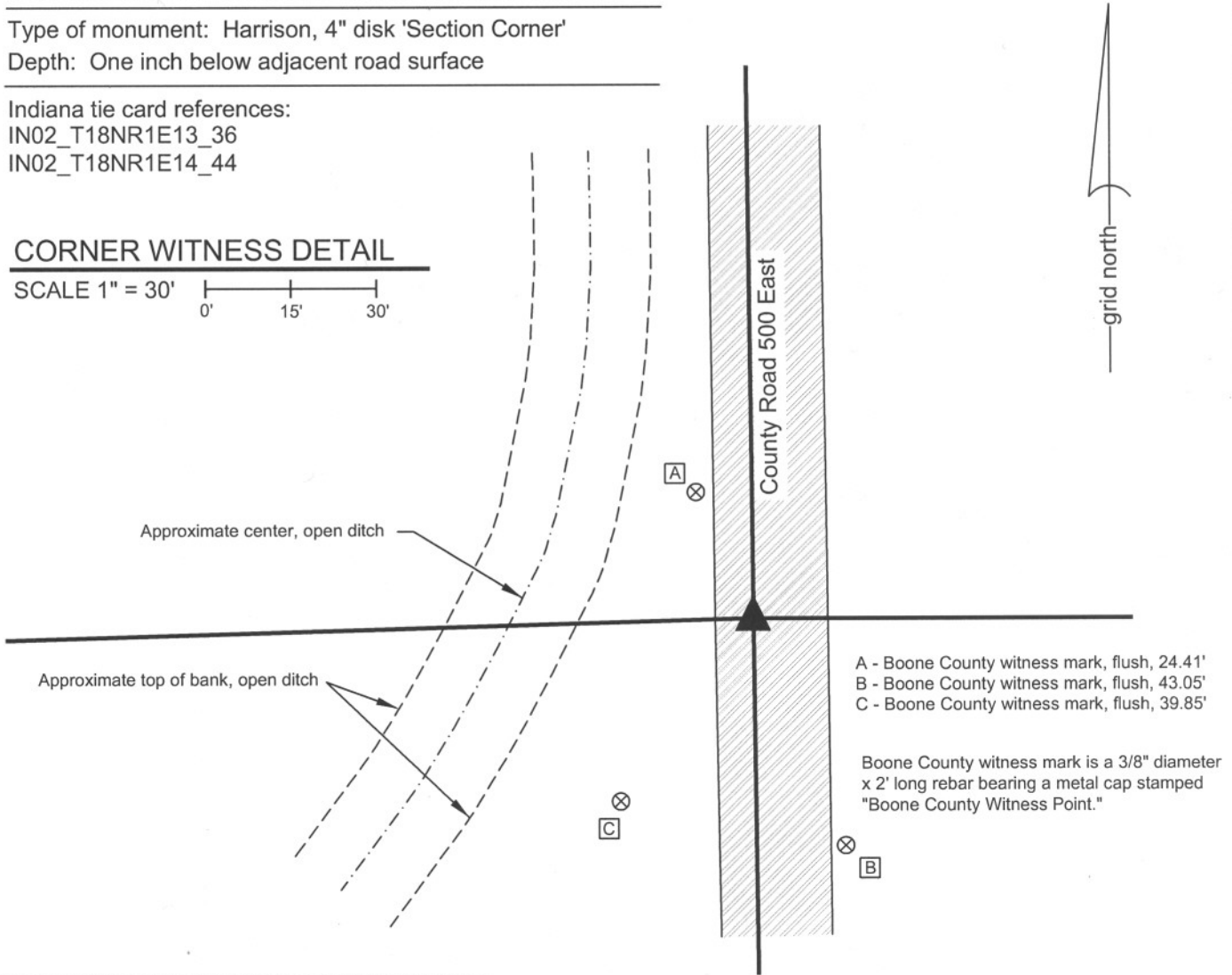
Indiana tie card references:

IN02_T18NR1E13_36

IN02_T18NR1E14_44

CORNER WITNESS DETAIL

SCALE 1" = 30'



- A - Boone County witness mark, flush, 24.41'
- B - Boone County witness mark, flush, 43.05'
- C - Boone County witness mark, flush, 39.85'

Boone County witness mark is a 3/8" diameter x 2' long rebar bearing a metal cap stamped "Boone County Witness Point."

The harrison monument was set in place of a railroad rail found.

A BCS record of December 19, 1873 states "Reestablished. South West swamp ash as before. Set a Rock 16,9,7." A BCS record of November 28, 1893 states "Reset Rock (See H, Sect. 13)" A BCS tie card dated September 1975 states "Found 2 stone. One on top of the other."

This corner was excavated on June 16, 2008. Prior to excavation, a railroad rail was known to be present, 14 inches deep in a hole in the asphalt. Excavation yielded no more monuments. No stones were found and it is considered most likely that the stones were removed and the rail installed in 1974. The 1974 tie card does not describe the size, markings or depth of the stones so it is not clear why two stones were present when the previous records only mention one. The base of an old wood post, 12 inches by 12 inches, was found preserved in the clay layer, approximately 18 inches deep. The south edge of the post was 18 inches north of the railroad rail. The harrison monument was set in the position of the rail.

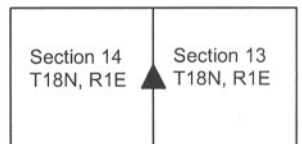
This corner was originally established as a wood post in June, 1820.



Kenneth E. Hedge
 Kenneth E. Hedge, County Surveyor

James S. Swift
 James S. Swift, IN LS 20200054
 March 11, 2009

Worth Township



SECTION CORNER RECORD

SE 250-600

BOONE COUNTY SURVEYOR'S OFFICE

State Plane grid coordinates NAD83 (NSRS 2007):

North: 1733038.80 East: 3156523.58 (U.S. survey feet)

Type of monument: Harrison, 4" disk 'Section Corner'

Depth: 4 inches above adjoining ground.

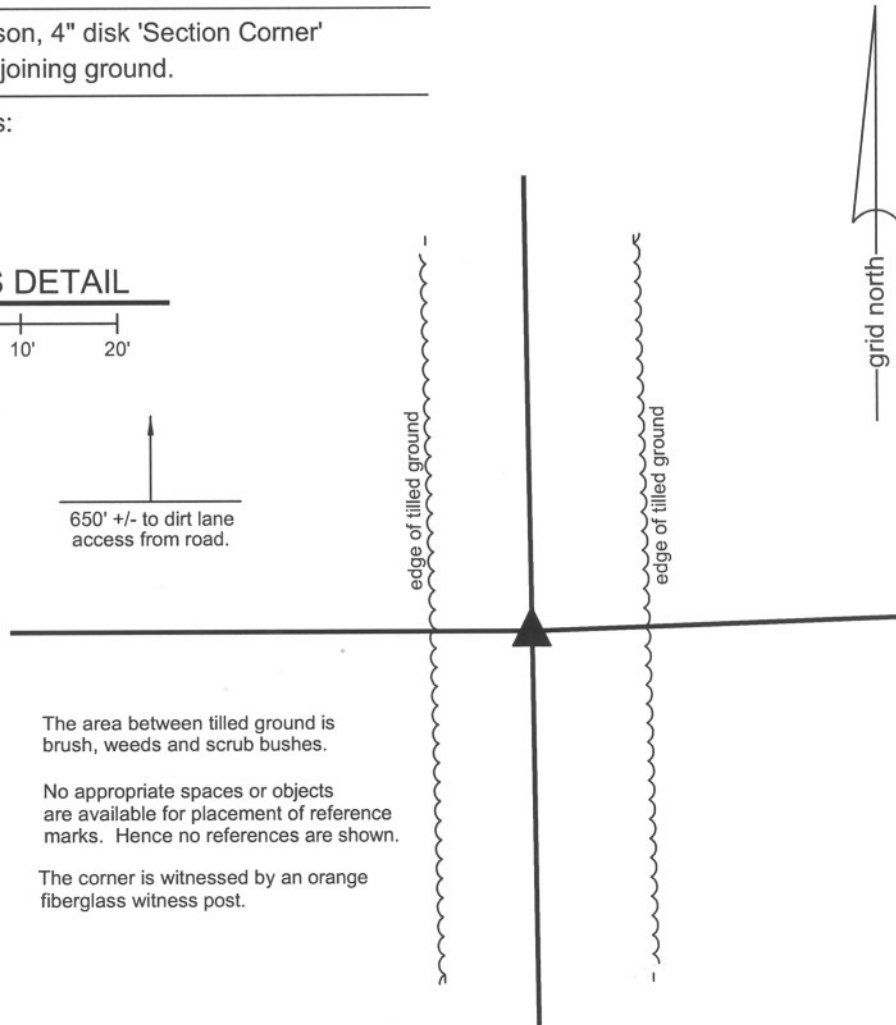
Indiana tie card references:

IN02_T18NR1E13_44

IN02_T18NR1E18_36

CORNER WITNESS DETAIL

SCALE 1" = 20'



The area between tilled ground is brush, weeds and scrub bushes.

No appropriate spaces or objects are available for placement of reference marks. Hence no references are shown.

The corner is witnessed by an orange fiberglass witness post.

The harrison monument was set in the position of the found remnants of a wood corner post.

This corner was excavated on November 9, 2009 and monumented on November 12, 2009. Prior to excavation a small pile rocks was visible in the vicinity of the corner but no specific monuments were known to exist. Prior to excavation an approximate position for the corner was computed, being the midpoint of the line between the section corners to the north and south. A pile of various medium sized rock was found near this computed point. Excavation in this area revealed that immediately north and east of the pile of rocks was evidence of an old corner post. Remnants of a wood post were found, surrounded by several rocks which appeared by their orientation to be brace rocks for the post. Fragments of fence were found bearing north, south and east from the post. None of the rocks had the characteristics of a section corner stone and all the rocks were accepted as being either brace rocks or just rocks piled near the post. The remnants of the post were accepted as the best evidence of the corner and the harrison monument was set in place of the post fragments. It is noted that although this corner is on the range line, there is a common position for the standard and closing corners as offsets were recorded at neither the section corner to the north nor the section corner to the south.

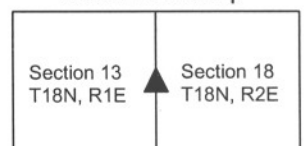
This corner was originally established as a wood post in 1819.



Kenneth E. Hedge
Kenneth E. Hedge, County Surveyor

James S. Swift
James S. Swift, IN LS 20200054
July 14, 2010

Worth Township



SECTION CORNER RECORD

SE 300-500

BOONE COUNTY SURVEYOR'S OFFICE

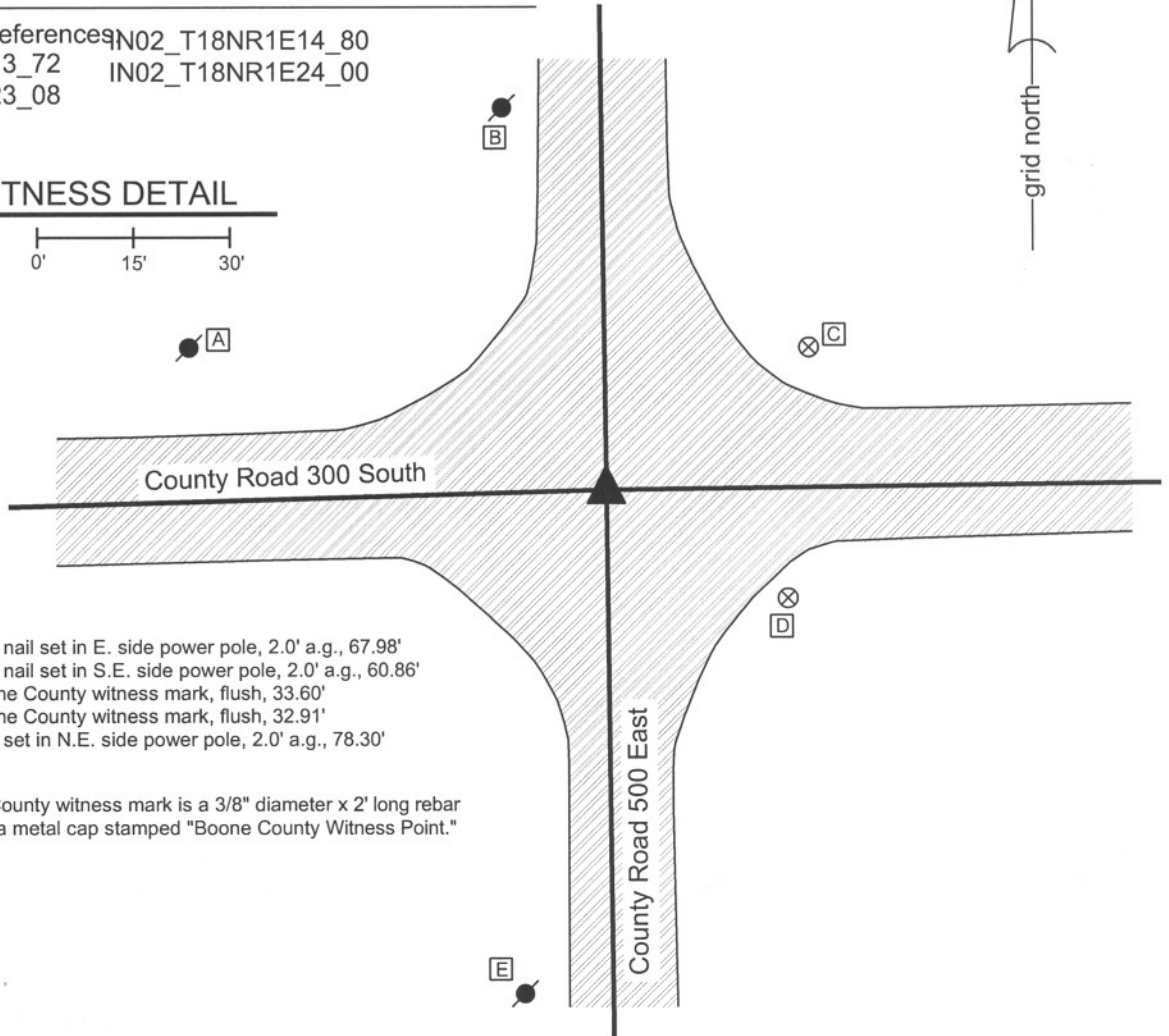
State Plane grid coordinates NAD83 (NSRS 2007):
North: 1730376.03 East: 3151207.38 (U.S. survey feet)

Type of monument: Harrison, 4" disk 'Section Corner'
Depth: One inch below adjacent road surface

Indiana tie card references: IN02_T18NR1E14_80
IN02_T18NR1E13_72 IN02_T18NR1E24_00
IN02_T18NR1E23_08

CORNER WITNESS DETAIL

SCALE 1" = 30'
0' 15' 30'



- A - Mag nail set in E. side power pole, 2.0' a.g., 67.98'
- B - Mag nail set in S.E. side power pole, 2.0' a.g., 60.86'
- C - Boone County witness mark, flush, 33.60'
- D - Boone County witness mark, flush, 32.91'
- E - Mag set in N.E. side power pole, 2.0' a.g., 78.30'

Boone County witness mark is a 3/8" diameter x 2' long rebar bearing a metal cap stamped "Boone County Witness Point."

The harrison monument was set in place of a harrison monument found over a railroad rail. No old BCS stone records were found for this corner. A BCS tie card dated August 16, 1967 shows the corner but does not give any specific information about what was found or set. A BCS tie card dated November 28, 2005 shows the corner as a harrison monument with no documentation of source. This corner was excavated on June 16, 2008. Prior to excavation a harrison monument was visible at the surface at the approximate intersection of the two county roads. A railroad rail was found at 16 inches deep, directly below the harrison. Excavation of an area 5 feet N-S by 5 feet E-W centered on the previously existing harrison yielded no more monuments. A new harrison was set in the position of the old harrison and the railroad rail. This corner was originally established as a wood post in June, 1820.



Kenneth E. Hedge
Kenneth E. Hedge, County Surveyor

James S. Swift
James S. Swift, IN LS 20200054

March 11, 2009

Worth Township

Section 14 T18N, R1E	Section 13 T18N, R1E
Section 23 T18N, R1E	Section 24 T18N, R1E

SECTION CORNER RECORD

SE 300-550

BOONE COUNTY SURVEYOR'S OFFICE

State Plane grid coordinates NAD83 (NSRS 2007):

North: 1730405.91 East: 3153882.47 (U.S. survey feet)

Type of monument: Harrison, 4" disk 'Section Corner'

Depth: One inch below adjacent road surface

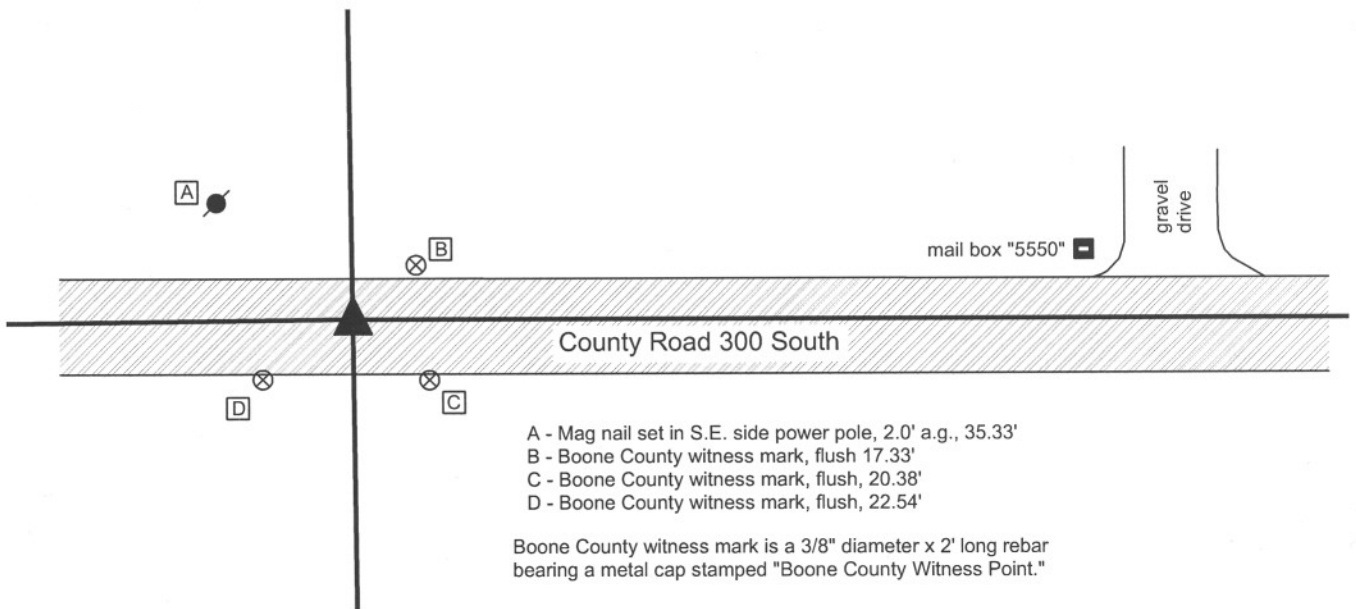
Indiana tie card references:

IN02_T18NR1E13_76

IN02_T18NR1E24_04

CORNER WITNESS DETAIL

SCALE 1" = 40'



The harrison monument was set in place of a railroad rail and harrison monument found.

No old BCS stone records were found for this corner. A BCS tie card dated December 2, 1970 states "no stone." A BCS tie card dated October 25, 2005 shows the corner as a harrison monument with no documentation about source. This corner was excavated on July 17, 2008. Prior to excavation, a harrison monument was visible at the surface. Excavation revealed a railroad rail 9 inches deep, below the harrison. A 5 foot N-S by 5 foot E-W area was excavated, centered on the harrison. Excavation was performed to the virgin clay layer, at approximately 3.5 feet. All sides of the hole were probed thoroughly. No other monuments were found. A new harrison monument was set in place of the rail and old harrison, both of which were removed during excavation.

This corner was originally established as a wood post in June, 1820.



Kenneth E. Hedge
 Kenneth E. Hedge, County Surveyor

James S. Swift
 James S. Swift, IN LS 20200054

March 11, 2009

Worth Township



SECTION CORNER RECORD

SE 300-600

BOONE COUNTY SURVEYOR'S OFFICE

State Plane grid coordinates NAD83 (NSRS 2007):
North: 1730404.93 East: 3156558.88 (U.S. survey feet)

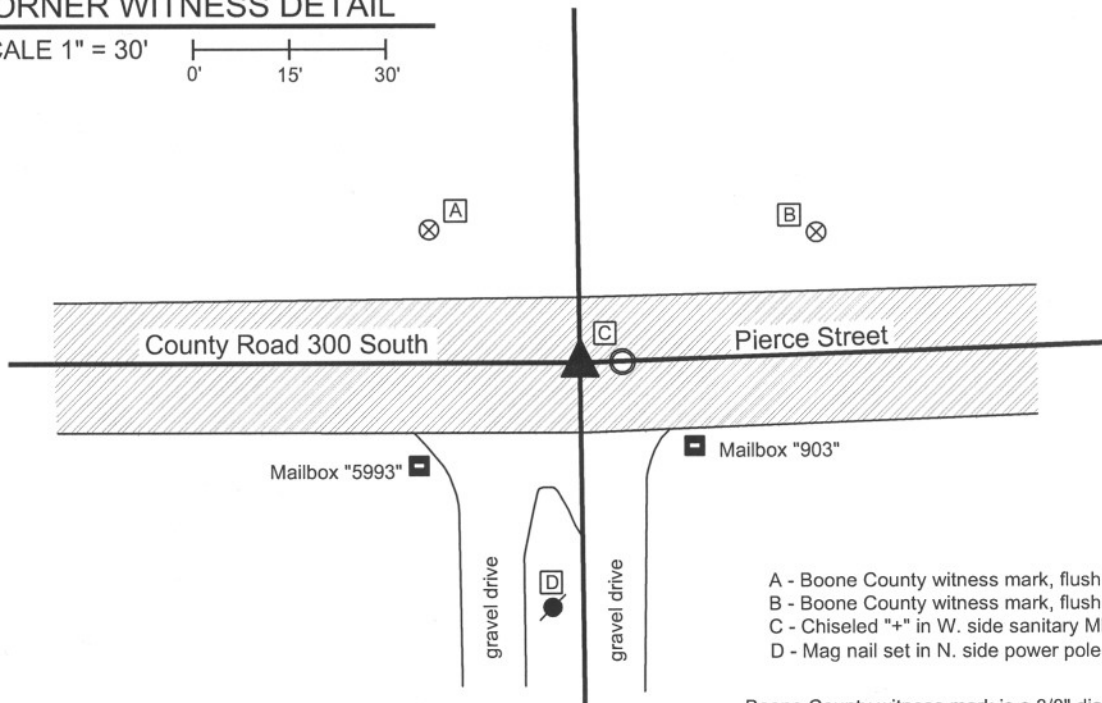
Type of monument: Harrison, 4" disk 'Section Corner'
Depth: One inch below adjacent road surface

Indiana tie card references:
IN02_T18NR1E13_80 IN02_T18NR2E18_72
IN02_T18NR1E24_08 IN02_T18NR2E19_00



CORNER WITNESS DETAIL

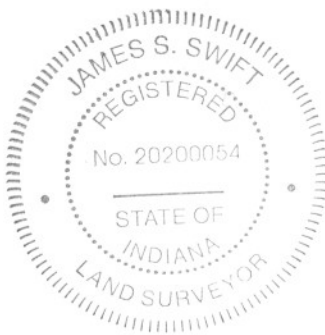
SCALE 1" = 30'



- A - Boone County witness mark, flush, 31.56'
- B - Boone County witness mark, flush, 42.37'
- C - Chiseled "+" in W. side sanitary MH, T.C., 4.9'
- D - Mag nail set in N. side power pole, 2' a.g., 37.6'

Boone County witness mark is a 3/8" diameter x 2' long rebar bearing a metal cap stamped "Boone County Witness Point."

The harrison monument was set in place of a harrison monument found. A BCS record of April 7-9, 1857 states "Reest. Set Rock 14 by 18 in." A BCS tie card dated February 26, 1969 states "no stone." A BCS tie card dated November 22, 2005 shows the corner as a harrison monument with no documentation about source. This corner was excavated on July 23, 2008. Prior to excavation, a harrison monument was visible at the surface. Excavation revealed clear evidence that the immediate vicinity of the corner was disturbed as part of the construction of a sanitary sewer and installation of the manhole 5 feet east of the harrison. No stone, nor any other monument was found. The old harrison was replaced with a new harrison in the same position. This corner was originally established as a wood post in 1819. There is no standard corner / closing corner offset as the federal notes for T 18 N, R 2 E state "intersect west line at post."



Kenneth E. Hedge
Kenneth E. Hedge, County Surveyor

James S. Swift
James S. Swift, IN LS 20200054

March 11, 2009

Worth Township

Section 13 T18N, R1E	Section 18 T18N, R2E
Section 24 T18N, R1E	Section 19 T18N, R2E