

SECTION CORNER RECORD

NW 400-000

BOONE COUNTY SURVEYOR'S OFFICE

State Plane grid coordinates NAD83 (2011):

Corner 1: North: 1766724.12 East: 3124826.08 (U.S. survey feet)

Corner 2: North: 1766794.02 East: 3124826.04 (U.S. survey feet)

Both Corners: Harrison, 4" disk 'Section Corner', flush

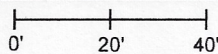
Indiana tie card references:

IN02_T19NR1E07_72 IN02_T19NR1W12_80

IN02_T19NR1W13_08 IN02_T19NR1E18_00

CORNER WITNESS DETAIL

SCALE 1" = 40'



The Harrison monument at Corner 2 was set in place of a disturbed monument found. The Harrison monument at Corner 1 was set in the position of a previous monument, per information shown on a BCS tie sheet dated September 30, 2005.

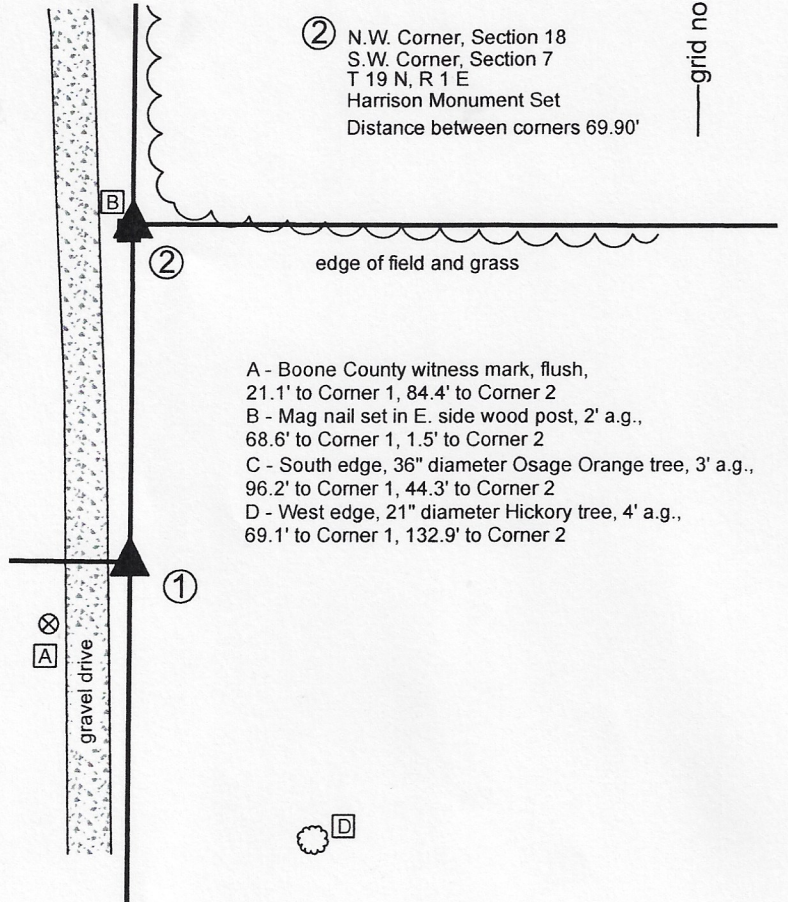
Both of these corners are original federal corners. Corner 1 was set in 1819 and Corner 2 was set in 1822. No specific descriptions of the corners were found in the BCS Surveyor's Record beyond the original establishments of the corners as wood posts in 1819 and 1822, respectively. Both corners are shown on a BCS tie card dated September 30, 2005 which shows them as Harrison monuments with no documentation of source.

Corner 2 is situated slightly east of a wood post, generally in-line with evidence of the north line of the northwest quarter of the northwest quarter of Section 18, in the form of a wood corner post, rebar at the base of a wood corner post, and east-west field division. The Harrison monument found at Corner 2 was disturbed, leaning substantially to the southwest, as found. No monument was found at Corner 1. Ron Neese, owner of the surrounding land confirms that the monument was removed several years ago during installation of a drainage tile.

The record federal closing distance for these corners is 93 links, or 61.4 feet. The corners as established per the 2005 tie card are separated by 69.90 feet. Existing fences and rebars found providing evidence of the north line of the northeast quarter of section 13 fall generally along the line, or slightly south thereof, connecting Corner 1 as established per the 2005 tie card and the north quarter corner of Section 13 (see BCS Corner NW 400-050). The furthest east of this evidence was found at approximately 600 feet west of Corner 1. It was observed that the 2005 position for Corner 1 represents the northerly most position expected with respect to the physical evidence to the west and that some evidence indicates that the corner could be several feet further south. Hence it is observed that although the two corners are substantially further apart than the record federal closing distance, both corners work with respective evidence to the west (Corner 1) and east (Corner 2) and that no physical evidence was found to indicate that the corners should be separated by less distance than is shown on the 2005 tie card. Manual excavation around the monument and post at Corner 2 revealed various rubble and small rocks but no stones or other monuments which appeared to represent evidence of the corner. Exploratory excavation was not performed at Corner 1, given the known fact that the vicinity of this corner was substantially disturbed during the recent tile installation.

Corner 2 was established per reference ties shown on the 2005 tie card, which fit with the found, though disturbed, monument. Corner 1 was established at the southerly prolongation of a line prolonged from the east quarter corner of Section 12 (see BCS Corner NW 450-000) through Corner 2 at 69.90 feet, per the 2005 tie card. Harrison monuments were set in concrete at both corners on October 8, 2020.

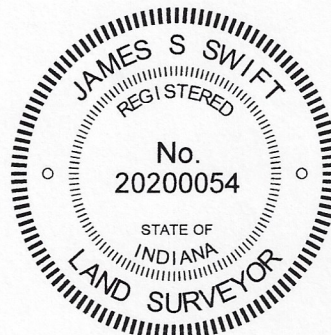
- ① S.E. Corner, Section 12
N.E. Corner, Section 13
T 19 N, R 1 W
Harrison Monument Set
- ② N.W. Corner, Section 18
S.W. Corner, Section 7
T 19 N, R 1 E
Harrison Monument Set
Distance between corners 69.90'



- A - Boone County witness mark, flush, 21.1' to Corner 1, 84.4' to Corner 2
- B - Mag nail set in E. side wood post, 2' a.g., 68.6' to Corner 1, 1.5' to Corner 2
- C - South edge, 36" diameter Osage Orange tree, 3' a.g., 96.2' to Corner 1, 44.3' to Corner 2
- D - West edge, 21" diameter Hickory tree, 4' a.g., 69.1' to Corner 1, 132.9' to Corner 2

Kenneth E. Hedge
Kenneth E. Hedge, County Surveyor

James S. Swift
James S. Swift, IN LS 20200054
October 13, 2020



Washington Township Clinton Township

Section 12 T19N, R1W	Section 7 T19N, R1E
Section 13 T19N, R1W	Section 18 T19N, R1E

Center Township

SECTION CORNER RECORD

NW 400-050

BOONE COUNTY SURVEYOR'S OFFICE

State Plane grid coordinates NAD83 (2011):

CORNER: North: 1766749.82 East: 3122149.74 (U.S. survey feet)

WITNESS: North: 1766750.32 East: 3122149.74 (U.S. survey feet)

Type of monument at corner: Wood corner post

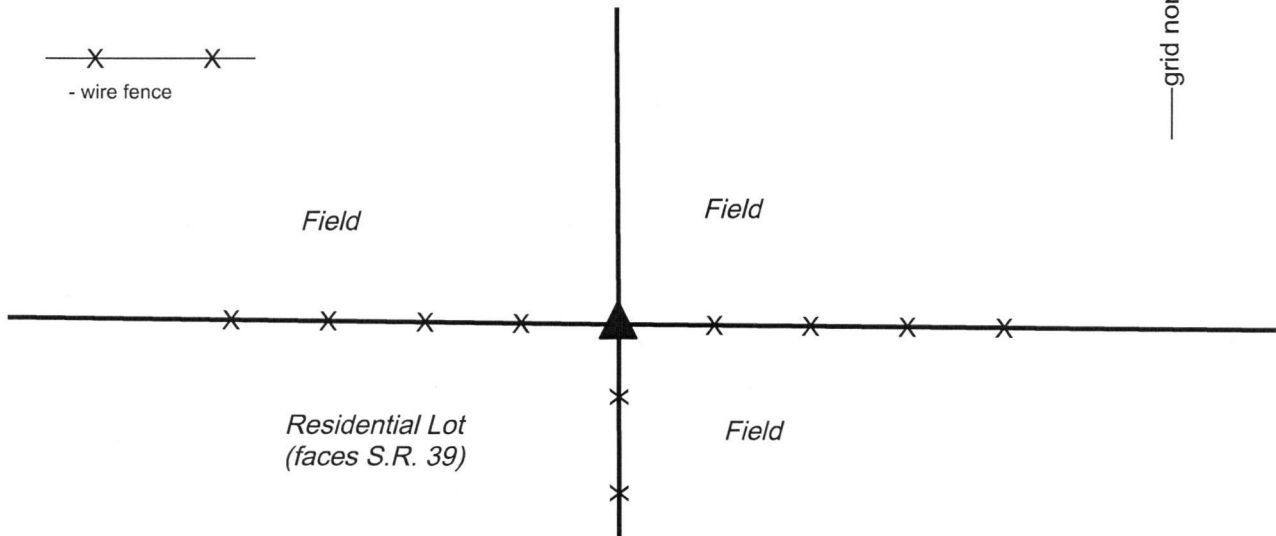
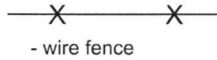
Witness monument: 5/8 inch rebar with metal cap 'Boone County Surveyor'

Indiana tie card references:

IN02_T19NR1W12_76 IN02_T19NR1W13_04

CORNER WITNESS DETAIL

SCALE 1" = 20'
0' 10' 20'

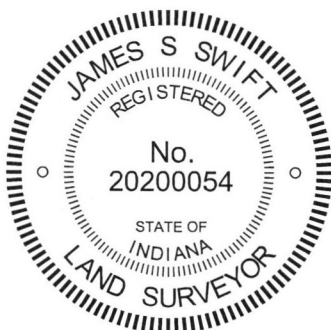


The wood post was found in place.

An undated note attributed to Carl Anderson found in the BCS records states this corner as "Stone Found." However, neither tie card nor field notes were found associated with this note, nor were any survey references found to support this corner as a stone found. Carl Anderson served as Boone County Surveyor from 1960 to 1972. Unlike more ancient surveys, corners referenced by Anderson are supported by field notes and tie cards, none of which were found for this corner.

The wood post represents the corner to standing fences to the south, east and west. Many rocks were found around the base of the post, none of which could be positively identified as marking the corner. Recent surveys, including those recorded in the Office of the Boone County Recorder in Survey Book 7, page 56 and Document 0214114, hold the post as the corner. The post is 7 inches by 7 inches, old and leaning slightly to the south. The post was accepted as the best available evidence of the corner. The post is situated at the northeast corner of a residential lot and the fencing to the south and west is in good condition, evidently used to enclose that portion of the residential lot. The post was left in place, as found. A 5/8 inch rebar with metal cap stamped "Boone County Surveyor" was set at the north edge of the post. The rebar is intended as a witness to the post, which is held as marking the actual corner. The rebar is 0.5 foot north of the center of the post.

This corner was originally established as a wood post in 1822.



Kenneth E. Hedge
Kenneth E. Hedge, County Surveyor

James S. Swift
James S. Swift, IN LS 20200054
April 11, 2018

Washington
Township

Section 12
T19N, R1W

Center
Township

Section 13
T19N, R1W

SECTION CORNER RECORD

NW 400-100

BOONE COUNTY SURVEYOR'S OFFICE

State Plane grid coordinates NAD83 (2011):

North: 1766779.30 East: 3119479.23 (U.S. survey feet)

Type of monument: Harrison, 4" disk 'Section Corner'

Depth: Two inches above adjacent ground

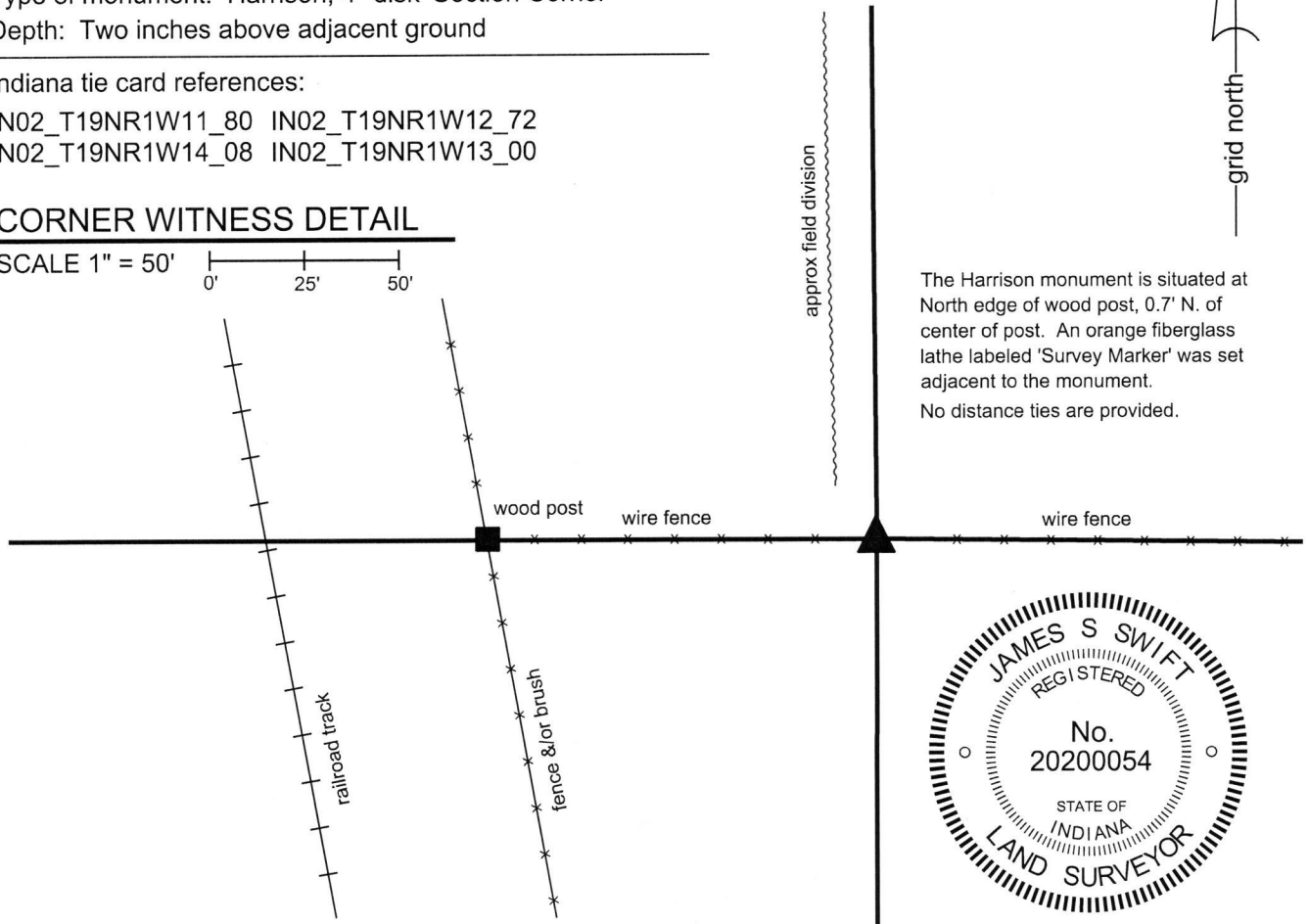
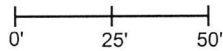
Indiana tie card references:

IN02_T19NR1W11_80 IN02_T19NR1W12_72

IN02_T19NR1W14_08 IN02_T19NR1W13_00

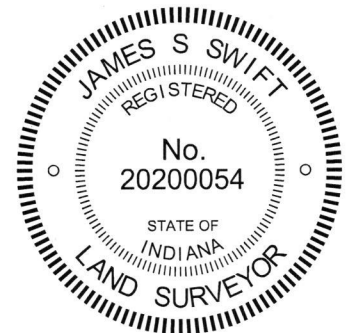
CORNER WITNESS DETAIL

SCALE 1" = 50'



The Harrison monument is situated at North edge of wood post, 0.7' N. of center of post. An orange fiberglass lathe labeled 'Survey Marker' was set adjacent to the monument.

No distance ties are provided.



The Harrison monument was set in place of a stone found.

No specific descriptions of this corner were found in the Boone County Surveyor's Record beyond the original establishment of the corner as a wood post in 1822. The corner is mentioned as the terminal point for measurements in records of 1834, 1836, 1850, and 1857, indicating that a monument of some form was present from which to measure at those times. No recent BCS tie cards were found referencing this corner. A recent survey by Ronald Wharry recorded as Instrument 201600012315 shows the corner as a wood post.

This corner was excavated on November 28-29, 2017. The wood post referenced on the Wharry survey was found in an east-west fence. The post had braces on the east and west sides of the post. The position of the post fits with the relative positions of proximate corners and fits with calls for the adjacent railroad right-of-way in the deed descriptions for neighboring properties to the west and southwest. The post appeared to be old but not ancient. Excavation around the post revealed numerous small rocks and two larger rocks. One rock along the northeast edge of the post was found to be situated in a haphazard orientation, not quite horizontal and oriented off cardinal directions. Another rock found at 6 inches deep along the north edge of the post bore the characteristics of corner stones found marking other corners throughout the county, being clearly vertical and oriented in cardinal directions. The stone was 11 inches tall, 7 inches east-west by 6 inches north-south with a distinct high point. The south side of the stone was flat and vertical. The stone could be interpreted as acting as a brace to the post but other brace rocks were not found around the post and the stone was not actually touching the post, being slightly north of the north edge of the post. The stone appeared in the field to be intended to mark the position of the corner and was held as such. The stone was removed and replaced with a Harrison monument in the same position. The monument is situated at the north edge of the post, 0.7 foot north of the center of the post.

Kenneth E. Hedge

 Kenneth E. Hedge, County Surveyor

James S. Swift

 James S. Swift, IN LS 20200054

December 13, 2017

Washington Twp

Center Twp

Section 11 T19N, R1W	Section 12 T19N, R1W
Section 14 T19N, R1W	Section 13 T19N, R1W

SECTION CORNER RECORD

NW 450-000

BOONE COUNTY SURVEYOR'S OFFICE

State Plane grid coordinates NAD83 (2011):

Corner 1: North: 1769388.24 East: 3124824.30 (U.S. survey feet)

Corner 2: North: 1769441.43 East: 3124824.27 (U.S. survey feet)

Corner 1: Harrison, 4" disk 'Section Corner', flush with adjacent ground

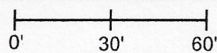
Corner 2: Harrison, 4" disk 'Section Corner', 3" above adjacent ground

Indiana tie card references:

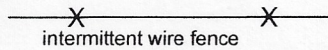
IN02_T19NR1E07_36 IN02_T19NR1W12_44

CORNER WITNESS DETAIL

SCALE 1" = 60'



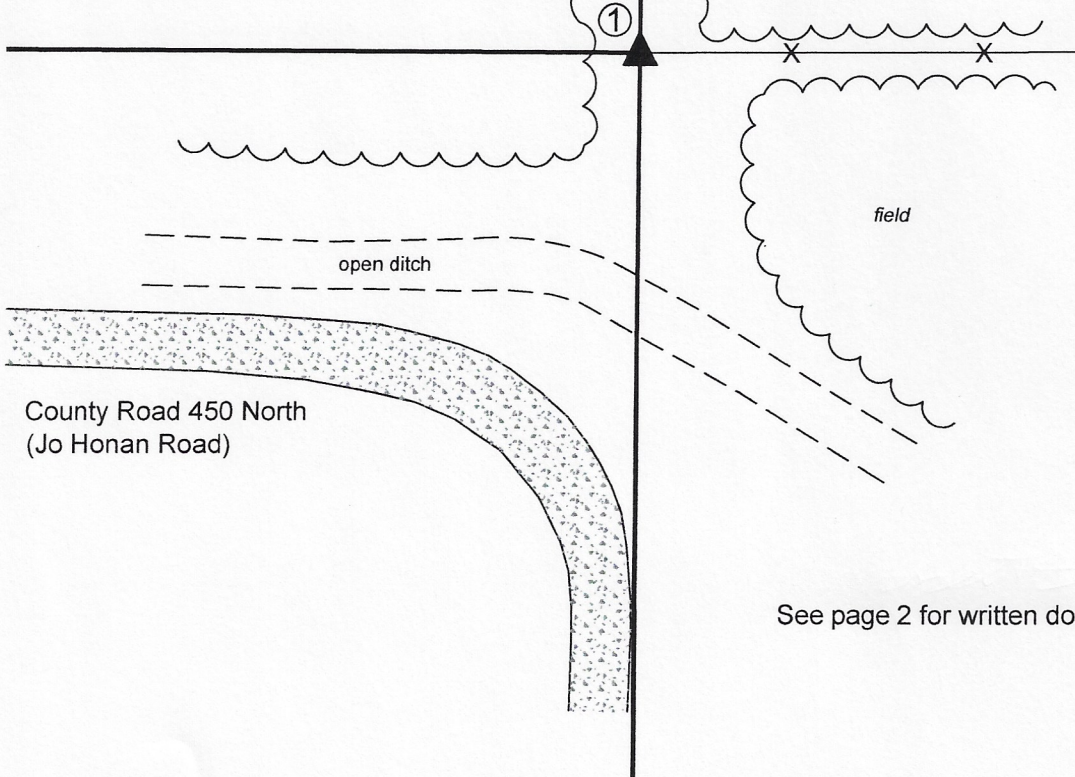
A - South edge 42" diameter Oak tree, 6' a.g.,
75.9' to Corner 1, 22.7' to Corner 2



intermittent wire fence



edge of field/grass/brush



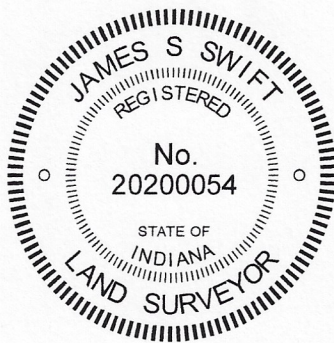
① East Quarter Corner
Section 12, T 19 N, R 1 W
Harrison Monument Set

② West Quarter Corner
Section 7, T 19 N, R 1 E
Harrison Monument Set
Distance between corners 53.20'



County Road 450 North
(Jo Honan Road)

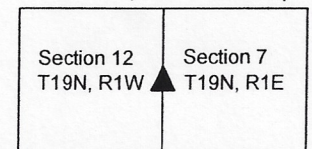
See page 2 for written documentation



Kenneth E. Hedge
Kenneth E. Hedge, County Surveyor

James S. Swift
James S. Swift, IN LS 20200054

Washington Township Clinton Township



SECTION CORNER RECORD

NW 450-000

BOONE COUNTY SURVEYOR'S OFFICE

Written Documentation Sheet

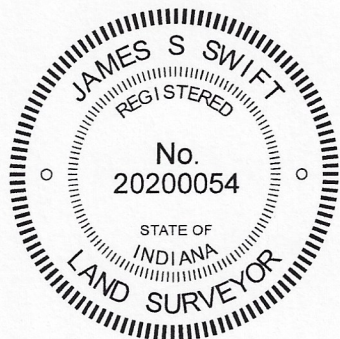
Please refer to page 1 of 2 for additional information.

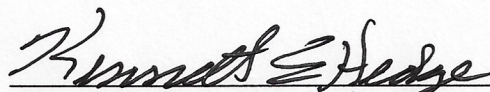
The Harrison monuments at both corners were set in place of Harrison monuments found.

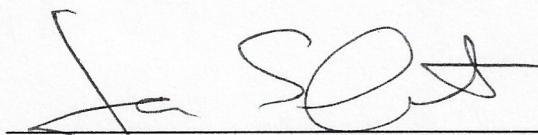
Corner 1 is an original federal corner, set on the Second Principal Meridian in 1819. Corner 2 is not an original federal corner.

No specific descriptions of these corners were found in the BCS Surveyor's Record, nor were they found referenced in surveys recorded in the Boone County Recorder's Office. The corners are referenced on BCS tie sheets dated September 30, 2005 which show both corners as Harrison Monuments with no information about why the corners were established in these positions.

Analysis of the relative positions of the monuments with respect to adjacent corners and local evidence indicates that Corner 2 was established at the intersection of a north-south fence with the westerly prolongation of an east-west fence which provides evidence of the south line of the northwest quarter of Section 7 from the apparent center of section of Section 7 west for approximately one-quarter mile. The deed for the adjacent land to the east of the corner (Instrument 0207793, Boone County Recorder) does not call out this corner, referring simply to the west line of the west half of section 7. The position of the Harrison monument found at Corner 2 fits with local evidence the form of the aforementioned fences and also fits well with the relative positions of proximate corners. It is noted that the monument at Corner 2 was leaning substantially toward the northeast as found. The Harrison monument found at Corner 1 was broken off at the top, as found, but otherwise evidently undisturbed. This monument was situated at the base of a broken corner post for fences to the north and east. The specific reason for why the corner was established at this position is not known and it is noted that the fence to the east does not necessarily provide evidence of the position of Corner 1, as this corner controls lines to the west, not the east. It is also noted that the corner is north of an expected position, both with respect to the relative position of Corner 2 and original federal closing offsets at the northwest and southwest corners of section 7 and also with respect to the physical evidence of the east-west road which runs generally straight through most of the center of Section 12 before bending toward the south, slightly west of the meridian line. Computing the range line offset at these corners with respect to the record federal offsets at the northwest and southwest corners of Section 7, it would be expected that the corners should be separated by 116.5 links of 76.89 feet. Estimating the position of Corner 1 with respect to the physical evidence of the east-west road, it is expected that the corners would be separated by approximately one chain or 66 feet. However, no specific documentation or accessory evidence, other than the east-west road, was found to support either of the positions which are further south than the found monument. A field division in the vicinity of the north line of the southeast quarter of the northeast quarter of Section 12 is sufficiently vague that it does not provide reliable accessory evidence for Corner 1. The deed for a house in the southeast quarter of the northeast quarter of Section 12 (see Instrument 200700004207, Boone County Recorder) specifically calls for the south line of the northeast quarter of Section 12 to be north of the road. Retracement of this description clearly indicates that the south line of the northeast quarter was held on a line connecting an iron pipe at the generally accepted center of Section 12 and the position of the Harrison monument shown on the 2005 tie card. Hence, while it is noted that the fence to the east does not necessarily provide evidence of corners in Section 12 and that the position of Corner 1 may be expected to fall south of the known monument, conclusive proof to defeat the prima facie evidence of the established county monument was not found. Furthermore, it is clear that the existing parcel in the southwest corner of the southeast quarter of the northeast quarter was laid off with respect to the established county monument. Manual excavation and probing in the vicinity of both corners, including the positions south of the monument at Corner 1, did not reveal any stones or other survey monuments. The BCS Surveyor's Record does not call for stones at either corner. Hence the position of the existing Harrison monument was held as marking Corner 1. This monument was replaced with a new Harrison monument set in concrete on October 7, 2020. The position of Corner 2 was established on the range line as defined by Corner 1 and the Harrison monument marking the northeast corner of Section 12 (see BCS Corner NW-500-000) at 53.20 feet from Corner 1, per the 2005 BCS tie card. This position fit well with the disturbed monument found at the corner within the uncertainty of the disturbed quality of the monument. A Harrison monument was set in concrete at this position on October 7, 2020.

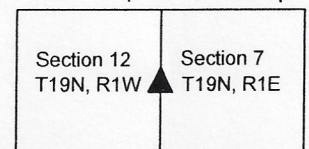



Kenneth E. Hedge, County Surveyor


James S. Swift, IN LS 20200054

October 13, 2020 Page 2 of 2

Washington Township Clinton Township



SECTION CORNER RECORD

NW 450-100

BOONE COUNTY SURVEYOR'S OFFICE

State Plane grid coordinates NAD83 (2011):

North: 1769427.44 East: 3119459.65 (U.S. survey feet)

Type of monument: Harrison, 4" disk 'Section Corner'

Depth: six inches below adjacent gravel road surface

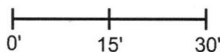
Indiana tie card references:

IN02_T19NR1W11_44 IN02_T19NR1W12_36

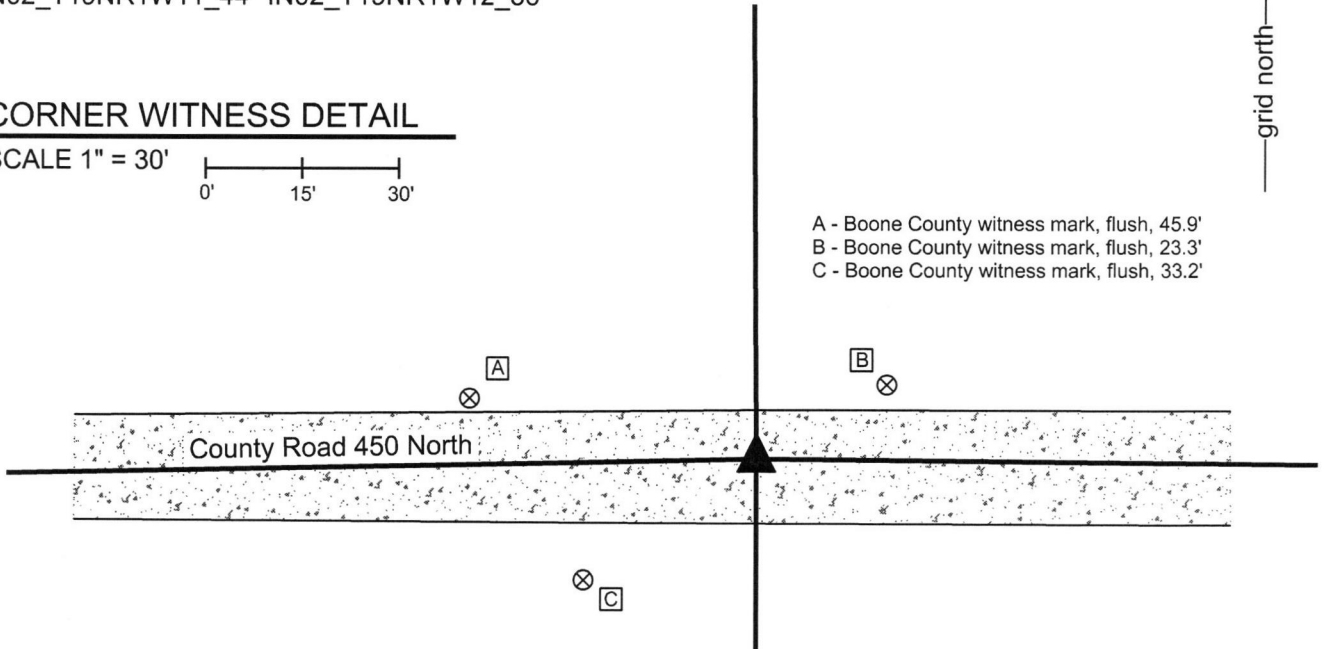


CORNER WITNESS DETAIL

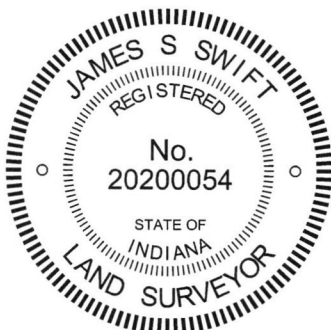
SCALE 1" = 30'



- A - Boone County witness mark, flush, 45.9'
- B - Boone County witness mark, flush, 23.3'
- C - Boone County witness mark, flush, 33.2'



The Harrison monument was set in a calculated position, near the position of a disturbed and displaced section of railroad rail found. No specific descriptions of this corner were found in the BCS Surveyor's Record, though the corner is mentioned as the terminal point for measurements in several entries. A BCS tie card November 7, 2006 shows the corner as a steel rail with no documentation of source. This corner was excavated on June 23, 2014. Prior to excavation a railroad rail was found flush with the surface of the roadway. The rail appeared leaning significantly towards the east. Excavation revealed that the rail was indeed leaning significantly and it appeared that it had been displaced by road grading equipment, which would be expected, given the shallow depth of the rail. Further excavation of an area extending 3 feet in all directions revealed no further evidence of the corner. The road bed in this particular vicinity is 3 inches of gravel material over the clay sub-base. At the time of excavation, the road bed was reconstructed and no monument was set, pending further review of the relative position of the disturbed railroad rail and monuments marking corners of properties tied to this corner. Further investigation of the dependent property corners to the west yielded the discovery of several rebars and a railroad spike. Overall uncertainties of approximately 0.5 foot were found to be associated with the relative positions of these monuments with respect to deed distances, but sufficient monumentation was available to calculate a position for the quarter section corner. This position was found to be approximately 0.7 foot west of the top of the disturbed rail, as originally found, which fit very well with the physical observation of the rail leaning to the east. The position of the corner was determined with respect to the relative positions of monuments to the west and the associated record descriptions. A Harrison monument was set at this position. The Harrison monument is 0.7 foot west of the top of the rail as it was found prior to excavation. Uncertainties of 0.5 of a foot exist with respect to this calculated position. This corner was originally established as a wood post in 1822.



Kenneth E. Hedge
Kenneth E. Hedge, County Surveyor

James S. Swift
James S. Swift, IN LS 20200054

March 28, 2016, revised March 23, 2017

Washington Township

Section 11 T19N, R1W	Section 12 T19N, R1W
-------------------------	-------------------------

SECTION CORNER RECORD

NW 500-000

BOONE COUNTY SURVEYOR'S OFFICE

State Plane grid coordinates NAD83 (CORS96):

Corner 1: North: 1772009.54 East: 3124823.06 (U.S. survey feet)

Corner 2: North: 1772102.14 East: 3124822.80 (U.S. survey feet)

Type of monument: Harrison, 4" disk 'Section Corner'

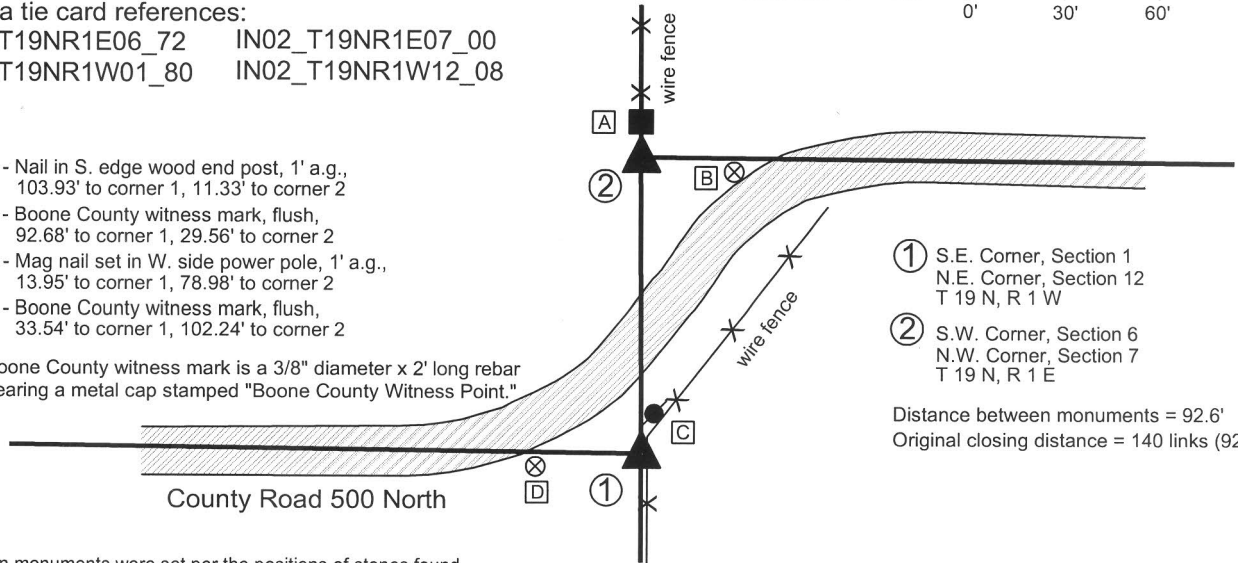
Depth: flush to 2 inches above adjacent ground.

Indiana tie card references:

IN02_T19NR1E06_72 IN02_T19NR1E07_00
IN02_T19NR1W01_80 IN02_T19NR1W12_08

- A - Nail in S. edge wood end post, 1' a.g., 103.93' to corner 1, 11.33' to corner 2
- B - Boone County witness mark, flush, 92.68' to corner 1, 29.56' to corner 2
- C - Mag nail set in W. side power pole, 1' a.g., 13.95' to corner 1, 78.98' to corner 2
- D - Boone County witness mark, flush, 33.54' to corner 1, 102.24' to corner 2

Boone County witness mark is a 3/8" diameter x 2' long rebar bearing a metal cap stamped "Boone County Witness Point."



- ① S.E. Corner, Section 1
N.E. Corner, Section 12
T 19 N, R 1 W
- ② S.W. Corner, Section 6
N.W. Corner, Section 7
T 19 N, R 1 E

Distance between monuments = 92.6'
Original closing distance = 140 links (92.4')

The harrison monuments were set per the positions of stones found.

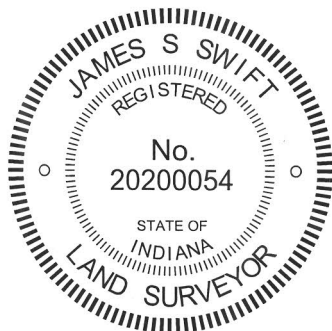
A BCS record of May 9, 1872 pertaining to the southwest corner of section 6, T19N, R1E (corner 2) states "Reestablished from Elm and Stump of Burr Oak. Elm is 67 links dist. Set Rock 14.8.5 1/2 marked +." A BCS record of April 19, 1895 pertaining to the southeast corner of section 1, T19N, R1W (corner 1) states "Set rock 24x15x5 established from lap." It is noted that the term "lap" refers to the offset distance between the standard and closing corners on the range line. At this corner the "lap" recorded in the original notes is 140 links, or 92.4 feet.

BCS tie cards dated October 14, 1971 pertaining to each of the corners state that a stone was found at corner 1 and that no stone was found and a RRR (railroad rail) was "put in" at corner 2. The tie cards show the two corners to be 97 feet apart. A BCS tie card dated January 18, 1994 pertaining to corner 1 shows the corner as being a 1/2 inch rebar. This card shows corner 1 to be 108 feet south of a corner post to the north. As the rail called for in the 1971 tie card was found at 11 feet south of this post and the stone called for in 1971 tie card was shown to be 97 feet south of the rail, it is evident that the 1/2 inch rebar called for in 1994 was in the position of the stone called for in 1971. A pair of BCS tie cards dated September 20, 2005 show corner 1 as a harrison monument and corner 2 as a railroad rail, with the two monuments at 92.39 feet apart.

Excavation in the fall of 2013, concluding on October 29, 2013 revealed both of the record stones described in the 1872 and 1895 records. The stone at corner 1 was found at 4 inches deep, slightly southwest of the harrison monument shown on the 2005 record. This stone measures 24 inches tall by 15 inches N-S by 5 inches E-W. The rebar shown on the 1994 tie card was found 4.6 feet south and 1.4 feet west of the stone. The stone at corner 2 was found 0.8 feet south and 0.8 feet east of the railroad rail shown on the 1971 and 2005 tie cards. This stone was found at 6 inches deep and measured 14 inches tall by 8 inches E-W by 5 1/2 inches N-S. The distance measured from the high point to the high point of the respective stones was 92.6 feet, barely longer than the record call of 140 links (92.4 feet). The harrison monument and railroad were both removed. The stone at corner 2 was also removed and replaced with a harrison monument set at the position of the high point of the stone. The stone at corner 1 was left in place. The specific position of corner 1 was determined at 92.6 feet along the prolongation of the range line from the standard corner 1/2 mile north through the stone at corner 2. This point fell slightly east of the high point of the stone. A 15 inch diameter section of HDPE storm pipe was notched and set vertically over and amongst the stone. The stone was encased in concrete and the harrison monument was set at the calculated point slightly east of the high point of the stone. It is noted that typically the closing corner is shifted to fit to the range line, per the procedures of the original federal surveyors. However, in this case it is clear the stone at corner 2 was established first per the bearing trees and that the stone at corner 1 was established relative to corner 2. Hence, in this particular case, corner 2 was held as the dominant corner for purposes of establishing the range line, though given that corner 1 was established along the prolongation of the line from the north through corner 2, the bend in the range line occurs at corner 1, as is typical. Corner 2 falls on the range line with no bend at that point.

No stone was found near the 1/2 inch rebar called for in the 1994 tie card. An adjoining land owner stated that a large rock had been visible above ground at that point but was removed many years ago.

Corner 1 was established in October, 1819 and corner 2 was originally established in June, 1822.



Kenneth E. Hedge
Kenneth E. Hedge, County Surveyor

James S. Swift
James S. Swift, IN LS 20200054
February 5, 2015

Washington Township	Clinton Township
Section 1 T19N, R1W	Section 6 T19N, R1E
Section 12 T19N, R1W	Section 7 T19N, R1E

PHOTOGRAPHIC DOCUMENTATION

Date of photography: October 22-29, 2013

View from above showing the stone at the closing corner and the railroad rail.



The closing corner and the fence to the north.



View from above the stone at the closing corner, looking east along C.R. 500 North.



The stone at the standard corner, and the harrison monument found. See documentation.



The stone at the standard corner. View from above and west.



For details and documentation, refer to related sheet "Section Corner Record."

SECTION CORNER RECORD

NW 500-050

BOONE COUNTY SURVEYOR'S OFFICE

State Plane grid coordinates NAD83 (2011):

North: 1772042.37 East: 3122129.53 (U.S. survey feet)

Type of monument: Harrison, 4" disk 'Section Corner'

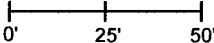
Depth: One inch below adjacent road surface

Indiana tie card references:

IN02_T19NR1W01_76 IN02_T19NR1W12_04

CORNER WITNESS DETAIL

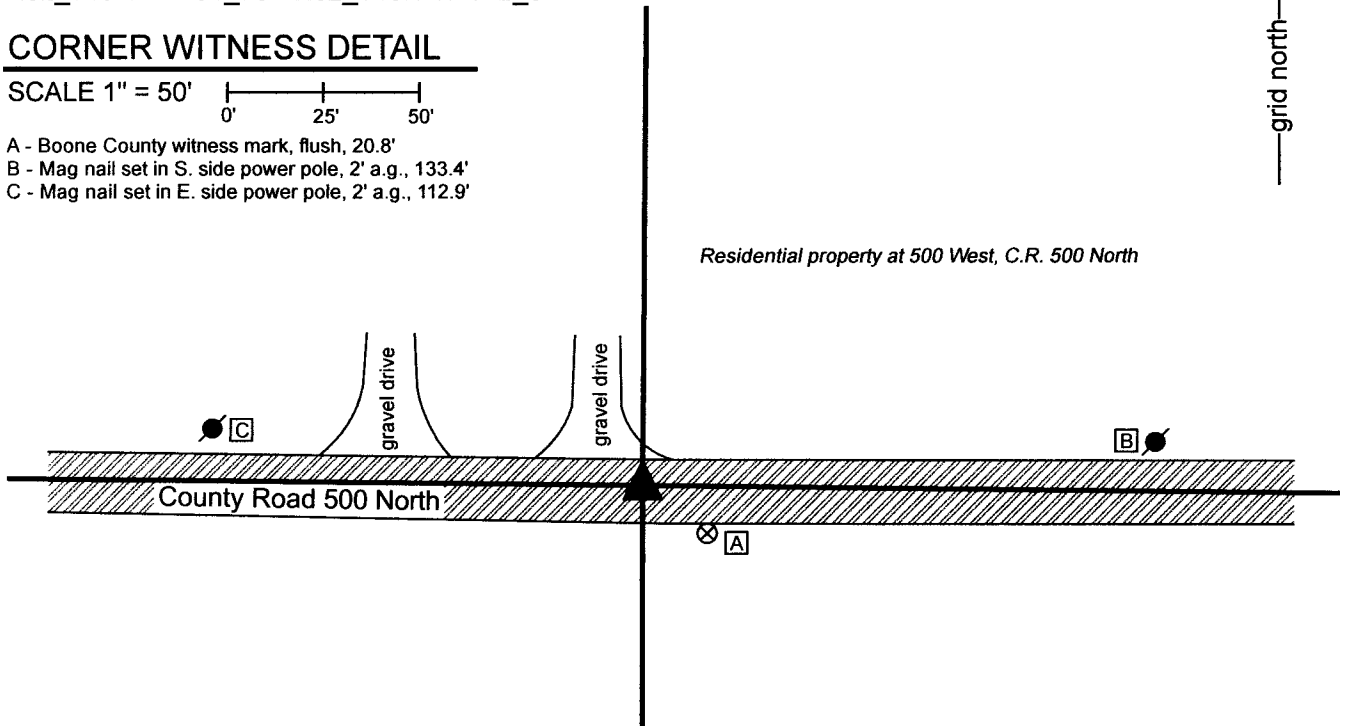
SCALE 1" = 50'



A - Boone County witness mark, flush, 20.8'

B - Mag nail set in S. side power pole, 2' a.g., 133.4'

C - Mag nail set in E. side power pole, 2' a.g., 112.9'

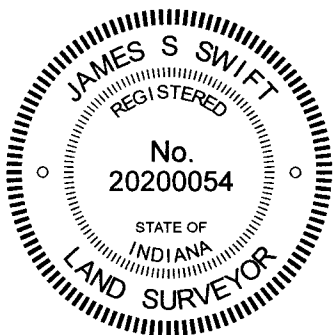


The Harrison monument was set in place of a rebar found.

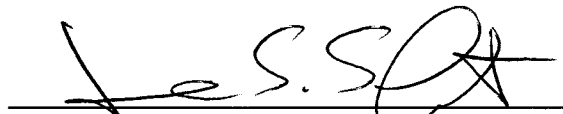
No specific descriptions of this corner were found in the BCS Surveyor's Record beyond the original establishment of the corner as a wood post in 1822. The only reference to the corner as the terminal point for measurements is part of an entry from 1836. A BCS tie card dated January 18, 1994 calls the corner as a 1/2-inch rebar, slightly north of the center of County Road 500 North. The deed for the adjacent residential property to the north (see Instrument 0011705, Boone County Recorder) is referenced from the southeast corner of the southwest quarter of the southeast quarter of Section 1 and does not reference this corner. The deeds for currently undeveloped parcels to the south (see Instrument 1996007357 among others) appear to have held the rebar as marking the corner. Numerous surveys have held the 1/2-inch rebar called for on the 1994 tie card, including surveys by this surveyor, Swift, recorded as Instruments 2019006935 and 2022005557.

Excavation was performed at this corner on November 3, 2022. Prior to excavation, the 1/2-inch diameter referenced on the 1994 tie card was found approximately flush with the surface of the road. Excavation of an area extending 2 feet north, 3 feet south, 2.5 feet east and 2.5 feet west of the rebar did not reveal additional evidence of the corner. Excavation was performed to the bottom of the road bed, at 16 inches deep. The rebar was slightly north of the center of the existing east-west roadway. Excavation was extended sufficiently far south to encompass the center of the road.

The position of the rebar fit reasonably well with the relative positions of other corners. The rebar was held as marking the corner. The rebar was removed during excavation and replaced with a Harrison monument in the same position.




Kenneth E. Hedge, County Surveyor


James S. Swift, IN LS 20200054
November 16, 2022

Washington
Township

Section 1
T19N, R1W

Section 12
T19N, R1W

SECTION CORNER RECORD

NW 500-100

BOONE COUNTY SURVEYOR'S OFFICE

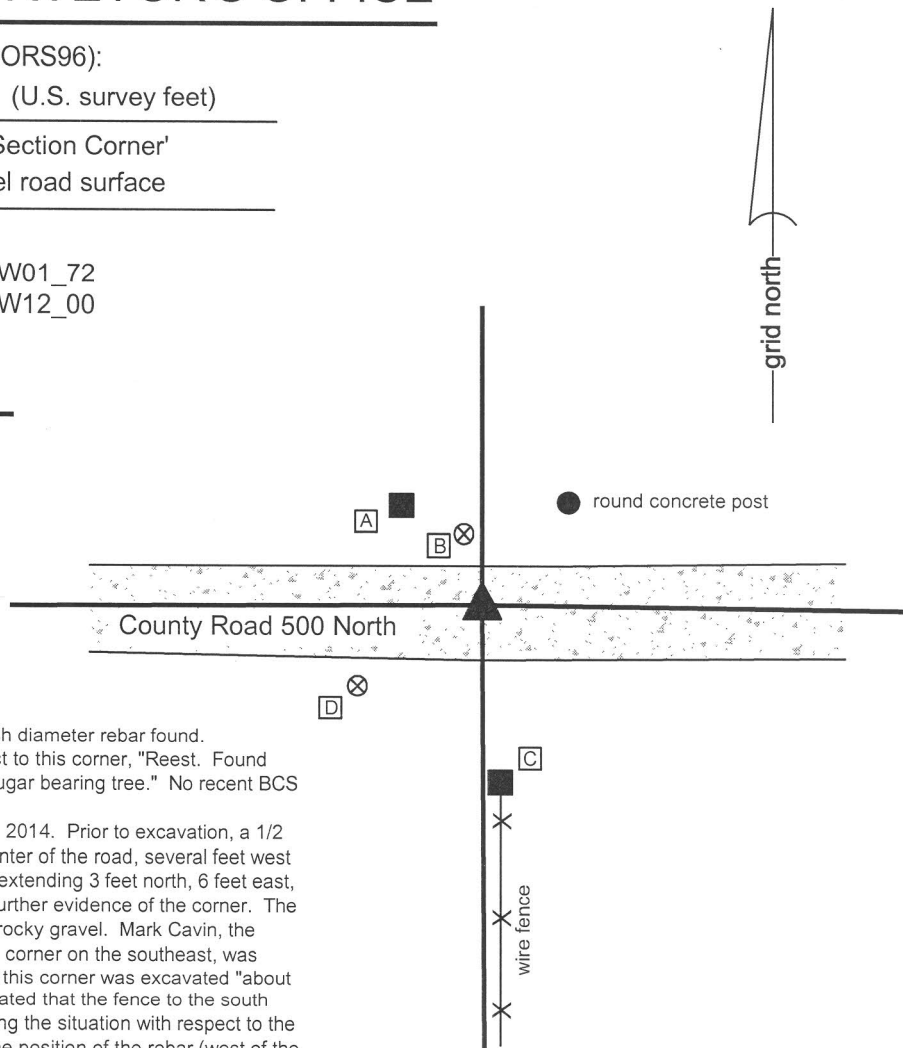
State Plane grid coordinates NAD83 (CORS96):
North: 1772071.05 East: 3119444.88 (U.S. survey feet)

Type of monument: Harrison, 4" disk 'Section Corner'
Depth: six inches below adjacent gravel road surface

Indiana tie card references:
IN02_T19NR1W02_80 IN02_T19NR1W01_72
IN02_T19NR1W11_08 IN02_T19NR1W12_00

CORNER WITNESS DETAIL

SCALE 1" = 30'

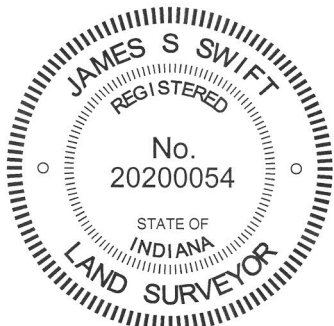


The Harrison monument was set in place of a 1/2 inch diameter rebar found. A BCS record of March 5-7, 1863 states, with respect to this corner, "Reest. Found stone at corner and marked it. Found roots of one sugar bearing tree." No recent BCS tie cards were found referencing this corner.

Excavation was performed at this corner on June 30, 2014. Prior to excavation, a 1/2 inch diameter rebar was found in the approximate center of the road, several feet west of the old fence to the south. Excavation of an area extending 3 feet north, 6 feet east, 5 feet south and 3 feet west of the rebar yielded no further evidence of the corner. The road bed in this vicinity was 4 to 6 inches of a large, rocky gravel. Mark Cavin, the resident and owner of the property which adjoins this corner on the southeast, was present during the excavation. Mr. Cavin stated that this corner was excavated "about 30 years ago and they found something." He also stated that the fence to the south had been there as long he could remember. Analyzing the situation with respect to the type of monument found (1/2 inch diameter rebar), the position of the rebar (west of the fence) and the time frame of previous excavation per Mr. Cavin's testimony, it is reasonable to conclude that the stone may have been found at that time and replaced with the 1/2 inch rebar. It is known that it was common practice for field crews in that era to remove stones, if found, and replace them with metal monuments, but not necessarily fully document the activity. Many stones are known to have been replaced with 1/2 inch rebars. The fact that the rebar is not in line with the fence is taken as evidence in support of this. It is common for stones to be found a short distance one side or the other of a fence, but it is typical that metal monuments set at estimated positions without the benefit of older evidence, such as a stone, to be set more in line with the fence. It is further noted that the rebar also fit very well with deed distances relative to monumentation and evidence of occupation for property corners to the east. The rebar was accepted as the best available evidence of the corner. The rebar was removed and replaced with a Harrison monument in the same position. This corner was originally established as a wood post in 1822.

- A - Mag nail set in S.E. side wood post, 2' a.g., 19.2'
- B - Boone County witness mark, flush, 11.5'
- C - Mag nail set in N. side wood post, 2' a.g., 26.2'
- D - Boone County witness mark, flush, 23.2'

Boone County witness mark is a 3/8" diameter x 2' long rebar bearing a metal cap stamped "Boone County Witness Point."



Kenneth E. Hedge, County Surveyor

James S. Swift, IN LS 20200054
March 27, 2015

Washington Township

Section 2 T19N, R1W	Section 1 T19N, R1W
Section 11 T19N, R1W	Section 12 T19N, R1W