

# SECTION CORNER RECORD

# SE 100-500

## BOONE COUNTY SURVEYOR'S OFFICE

State Plane grid coordinates NAD83 (NSRS 2007):

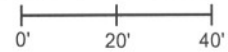
North: 1741013.35 East: 3151069.19 (U.S. survey feet)

Type of monument: Harrison, 4" disk 'Section Corner'

Depth: One inch below adjacent road surface

### CORNER WITNESS DETAIL

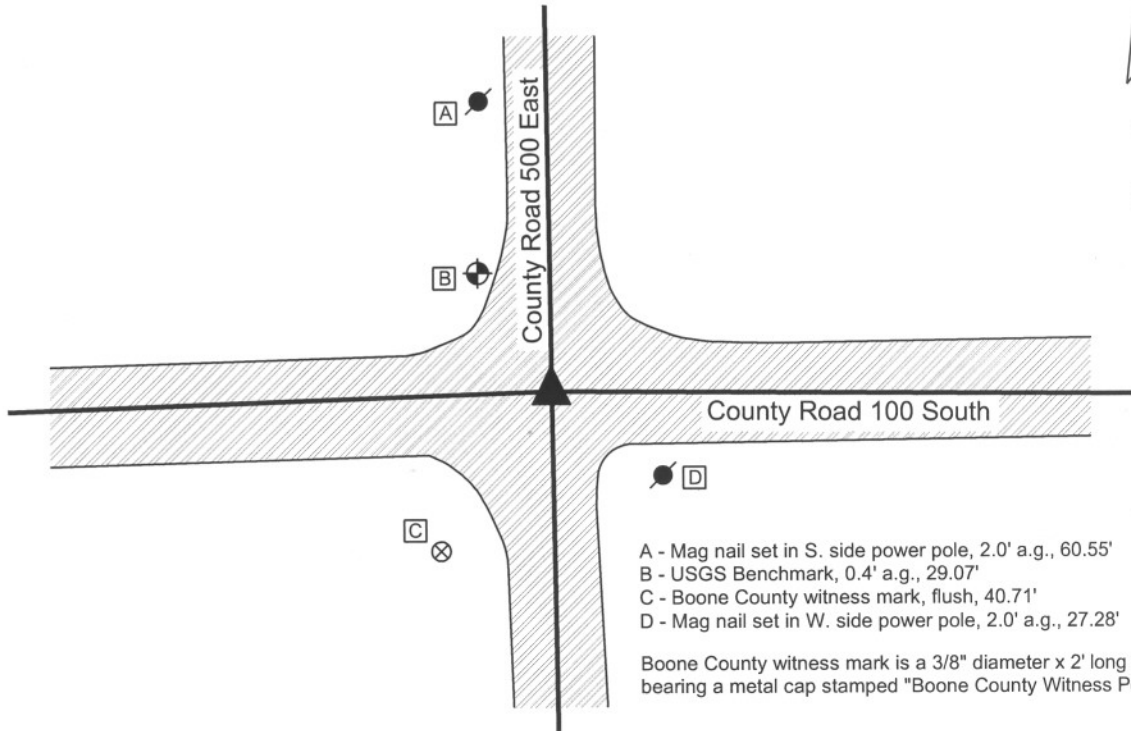
SCALE 1" = 40'



Indiana tie card references:

IN02\_T18NR1E01\_72 IN02\_T18NR1E02\_80

IN02\_T18NR1E11\_08 IN02\_T18NR1E12\_00



The harrison monument was set over a stone found.

A BCS record of April 6, 1869 states "Placed the Rock deeper 27,20,8 in ground." A BCS tie card dated August 16, 1967 states "no stone" and shows a position for the corner but does not document the monument set. A BCS tie card dated October 25, 2005 shows the corner as a harrison monument with no documentation of source.

This corner was excavated on July 16, 2009. Prior to excavation a harrison monument was visible at the surface. Excavation revealed a railroad rail found at 10 inches deep, approximately 2 inches SW of the position of the harrison monument. Although the record does not specify the monument, it is likely that the railroad rail was set on August 16, 1967. Further excavation revealed a stone found at 15 inches deep, north of the harrison and rail. The stone is clearly vertical, embedded in the clay layer below the road with 3 inches of the stone protruding out of the clay into the base layer of the road. With 12 inches of the stone exposed the stone measures 7 inches E-W by 16 inches N-S and appeared to be larger lower. Based on experience excavating similar monuments, it is reasonable to conclude that this is the record stone described in the 1869 record and that the E-W and N-S dimensions near the base of the stone will match the record dimensions of 8 inches and 20 inches, respectively. No specific markings were observed, nor were any noted in the record. The stone was left in place and the harrison monument was set over the top center point of the stone, 1.7 feet north and 0.2 feet east of the previous harrison.

This corner was originally established as a wood post in June, 1820.



*Kenneth E. Hedge*  
 Kenneth E. Hedge, County Surveyor

*James S. Swift*  
 James S. Swift, IN LS 20200054  
 July 14 2010

Worth Township

Section 2 T18N, R1E	Section 1 T18N, R1E
Section 11 T18N, R1E	Section 12 T18N, R1E

PHOTOGRAPHIC DOCUMENTATION

Date of photography: July 16, 2009

View of the stone from above and west.



View of the stone from above and south.



View from the west, looking across the stone and west along County Road 100 South.



View from the south, looking across the stone and north along County Road 500 East.



For details and documentation, refer to related sheet "Section Corner Record."



# SECTION CORNER RECORD

## BOONE COUNTY SURVEYOR'S OFFICE

SE 100-550

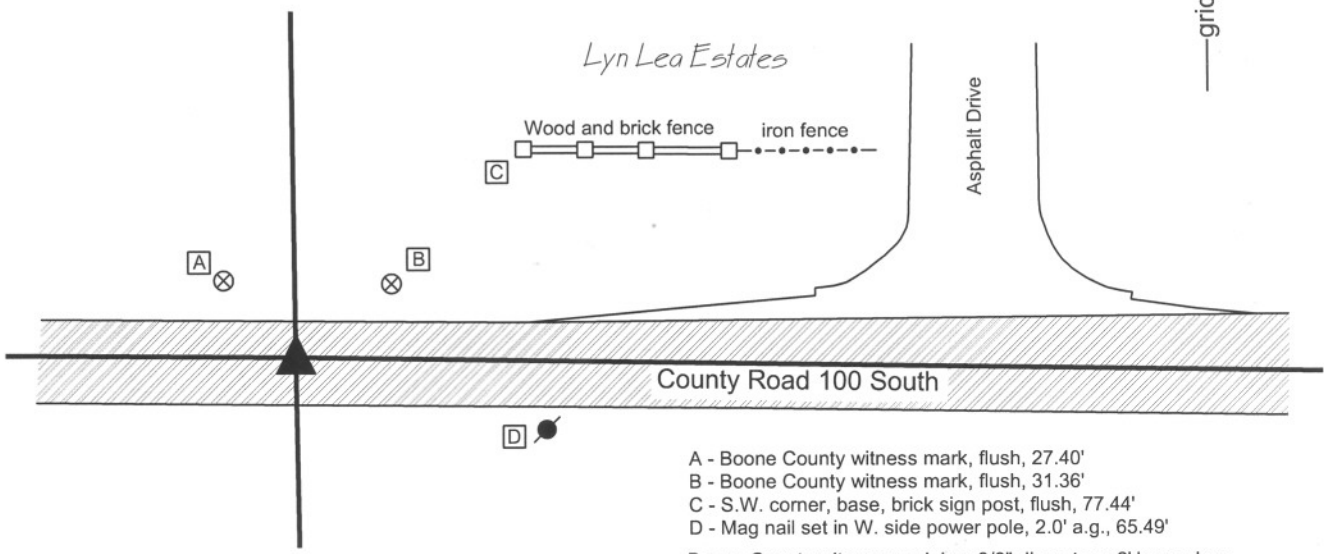
State Plane grid coordinates NAD83 (NSRS 2007):  
 North: 1740993.18 East: 3153719.28 (U.S. survey feet)

Type of monument: Harrison, 4" disk 'Section Corner'  
 Depth: One inch below adjacent road surface

Indiana tie card references:  
 IN02\_T18NR1E01\_72  
 IN02\_T18NR1E12\_04

### CORNER WITNESS DETAIL

SCALE 1" = 50'



- A - Boone County witness mark, flush, 27.40'
  - B - Boone County witness mark, flush, 31.36'
  - C - S.W. corner, base, brick sign post, flush, 77.44'
  - D - Mag nail set in W. side power pole, 2.0' a.g., 65.49'
- Boone County witness mark is a 3/8" diameter x 2' long rebar bearing a metal cap stamped "Boone County Witness Point."

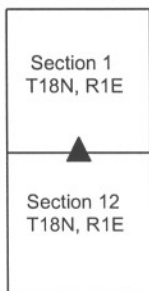
The harrison monument was set in place of a harrison monument found. No specific records of this corner were found in the BCS "Surveyor's Record" though it is mentioned as the terminus point for measurements several times. A BCS tie card dated October 8, 1971 states "Stone found, RRR put in." A BCS tie card dated October 25, 2005 shows the corner as a harrison monument with no documentation of source. This corner was excavated on July 24, 2009. Prior to excavation, a harrison monument was visible at the surface. Excavation revealed no more evidence of the corner. Neither the stone nor the railroad rail (RRR) mentioned in the 1971 record were found. Excavation did reveal that the road bed in this area consists of 5 inches of asphalt over 5 inches of #53 road stone, below which is the virgin clay layer. No evidence of an old road bed which includes a sandy, gravelly sub-base was found. This indicates recent road construction which removed the old road bed and likely removed the rail, stone or any other evidence of the corner. The existing harrison monument was accepted as the best evidence of the corner and this monument was replaced in its original position. This corner was originally established as a wood post in June, 1820.



*Kenneth E. Hedge*  
 Kenneth E. Hedge, County Surveyor

*James S. Swift*  
 James S. Swift, IN LS 20200054  
 July 14, 2010

Worth Twp



# SECTION CORNER RECORD

SE 100-600

## BOONE COUNTY SURVEYOR'S OFFICE

State Plane grid coordinates NAD83 (NSRS 2007):

North: 1740952.71 East: 3156359.24 (U.S. survey feet) (standard corner)

North: 1740988.34 East: 3156358.57 (U.S. survey feet) (closing corner)

Type of monument: Harrison, 4" disk 'Section Corner', 2 inches below gravel (Cor. 1)

36 inch length of 5/8 inch diam. rebar with metal cap 'Boone County Surveyor', flush (Cor. 2)

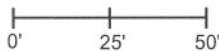
Indiana tie card references:

IN02\_T18NR1E01\_80 IN02\_T18NR1E12\_08

IN02\_T18NR2E06\_72 IN02\_T18NR2E07\_00

### CORNER WITNESS DETAIL

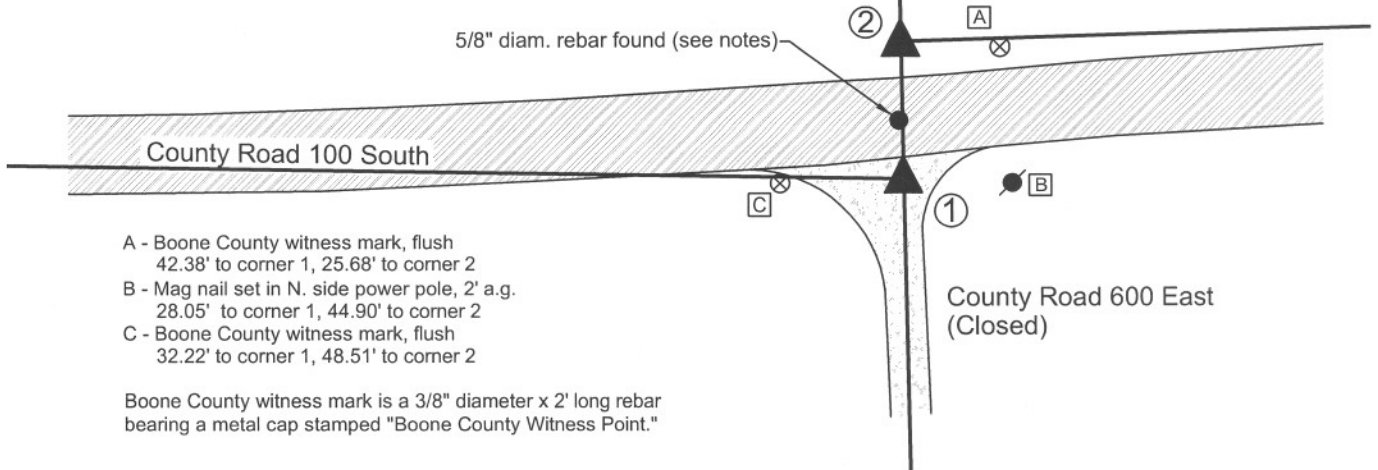
SCALE 1" = 50'



① S.E. Corner, Section 1  
N.E. Corner, Section 12  
T 18 N, R 1 E

② S.W. Corner, Section 6  
N.W. Corner, Section 7  
T 18 N, R 2 E

Distance between monuments:  
54 links = 35.64 feet



- A - Boone County witness mark, flush  
42.38' to corner 1, 25.68' to corner 2
- B - Mag nail set in N. side power pole, 2' a.g.  
28.05' to corner 1, 44.90' to corner 2
- C - Boone County witness mark, flush  
32.22' to corner 1, 48.51' to corner 2

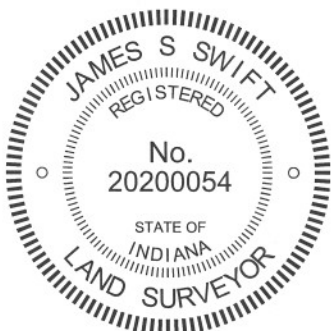
Boone County witness mark is a 3/8" diameter x 2' long rebar bearing a metal cap stamped "Boone County Witness Point."

The harrison monument at corner 1 was set in place of a 5/8 inch diameter rebar found. The capped rebar at corner 2 was set at a calculated position. A BCS record of February 16, 1871 states with respect to corner 1 "Reestablished from stump of trees. Set a Rock. 16,16,9 +." A BCS record of October 19, 1895 states with respect to corner 2, Established Rock 18x12x10 marked +." BCS field notes dated August 22, 1967 for which no tie card was found state with respect to corner 1, "no stone." A BCS tie card dated December 9, 1994 show rebars at both corners but do not specifically reference a distance between the two corners. A BCS tie card dated October 25, 2005 shows corner 1 as a harrison monument. This document does not mention the adjacent corner 2, nor does the diagram on the document demonstrate the jog in County Road 100 South as it crosses the range line.

Prior to excavation, Mr. Jerry Carter, Registered Surveyor, questioned the position of the harrison monument set in 2005. Mr. Carter previously worked for Anderson & Associates, the company which produced the tie card and which set the harrison monument, and was employed by that firm at the time the harrison monument was set. Mr. Carter expressed his firm conviction that the harrison monument was not in the same position as a rebar previously held by Anderson & Associates, which he believed to be the same rebar shown on the 1994 tie card. Mr. Carter calculated the position of the rebar from information in his files and discovered that precisely at the calculated position a rebar did indeed exist, although it appeared to have lost its magnetic qualities and did not register on magnetic locator device. The rebar was found to be 1.8 feet south and 7.8 feet east of the harrison monument. The found rebar fit much better with local evidence in the form of the existing center of County Road 600 East than did the harrison monument. Per Mr. Carter, the rebar fits with deed references, monumentation and occupation lines to the west.

Excavation at corner 1, encompassing the locations of the rebar and harrison monument yielded no further evidence. Excavation in the vicinity of corner 2 yielded several rocks, none of which matched the description in the 1895 record nor were positively identifiable as section corner markers. The found rebar at corner 1 was held as marking the corner and was replaced with a harrison monument. The position of corner 2 was established on line between corner 1 and the standard corner approximately 1/2 mile north at the record government closing distance of 54 links, or 35.64 feet.

It is noted that another rebar exists, being in the roadway as it jogs across the range line. This rebar is 1.0 foot west and 15.2 feet north of the harrison monument set at corner 1. The source of this rebar is not known. Its position does not fit with any other evidence of either corner. This intermediate rebar was left in place, but should not be interpreted as marking either corner. The harrison monument set in 2005 was removed.



*Kenneth E. Hedge*  
Kenneth E. Hedge, County Surveyor

*James S. Swift*  
James S. Swift, IN LS 20200054  
March 30, 2012

Worth Township

Section 1 T18N, R1E	Section 6 T18N, R2E
Section 12 T18N, R1E	Section 7 T18N, R2E

# SECTION CORNER RECORD

## BOONE COUNTY SURVEYOR'S OFFICE

SE 150-500

State Plane grid coordinates NAD83 (NSRS 2007):

North: 1738356.333 East: 3151110.231 (U.S. survey feet)

Type of monument: Harrison, 4" disk 'Section Corner'

Depth: One inch below adjacent road surface

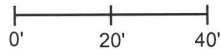
Indiana tie card references:

IN02\_T18NR1E11\_44

IN02\_T18NR1E12\_36

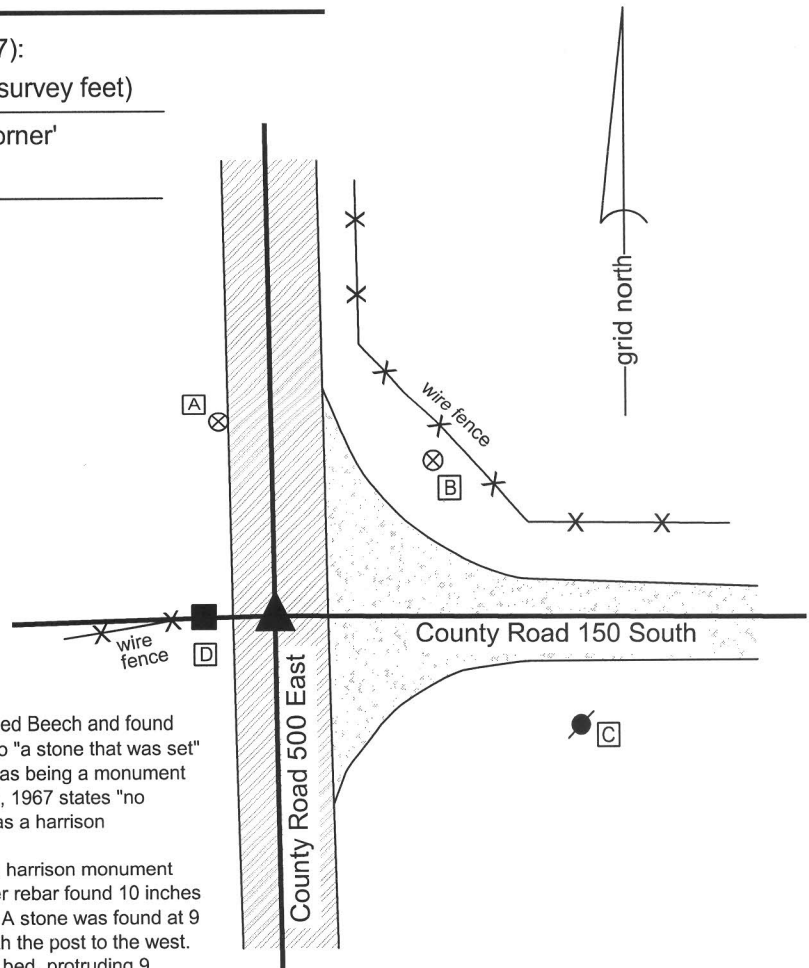
### CORNER WITNESS DETAIL

SCALE 1" = 40'



- A - Boone County witness mark, flush, 41.53'
- B - Boone County witness mark, flush, 45.70'
- C - Mag nail set in N.W. side power pole, 2.0' a.g., 66.0'
- D - Mag nail set in N. side wood post, 0.7' a.g., 13.4'

Boone County witness mark is a 3/8" diameter x 2' long rebar bearing a metal cap stamped "Boone County Witness Point."



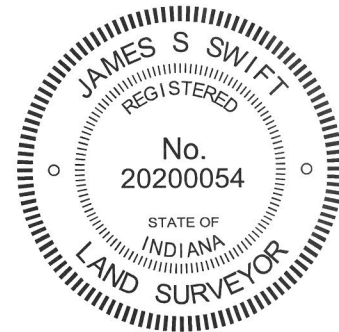
The harrison monument was set over a stone found.

A BCS record of April 6, 1869 states "A stone that was set. Chopped Beech and found mark to satisfy some who doubted." It is noted that the reference to "a stone that was set" is interpreted to mean that the stone was found and was accepted as being a monument intentionally set in the past. A BCS tie card dated August 22, 1967 states "no stone." A BCS tie card dated October 25, 2005 shows the corner as a harrison monument with no documentation of source.

This corner was excavated on July 16, 2009. Prior to excavation a harrison monument was visible at the surface. Excavation revealed a 5/8 inch diameter rebar found 10 inches deep, against a railroad rail at 13 inches, both below the harrison. A stone was found at 9 inches deep, north and east of the rebar. The stone was in line with the post to the west. The stone was partially embedded in the clay layer below the road bed, protruding 9 inches into the bottom of the road bed. It was oriented slightly off cardinal directions and measured 17 inches in the approximate N-S dimension, 4 inches in the approximate E-W dimension and was 14 inches tall. The stone was removed and another stone was found below, slightly to the east. The upper stone was situated along the southwest edge of the lower stone. The lower stone was found at 15 inches deep, well embedded in the clay layer, protruding approximately 3 inches into the road bed. This stone was 14 inches N-S by 14 inches E-W by 10 inches tall. No specific markings were found. The characteristics of this stone, stable in the clay but not vertical and bearing no particular markings, fit well with other stones which were found (i.e. "stone that was set") by County Surveyors in the mid to late 1800s but which were presumably set earlier. A notable feature of the record is the reference to "Chopped Beech and found mark to satisfy some who doubted." In conjunction with the "stone that was set" reference, this is understood to mean that the surveyor in 1869 found the stone and was able to prove that it was in the proper location by means of a distance tie to an original bearing tree.

The harrison monument was set over the approximate top center of the lower stone. The upper stone, rebar, railroad rail and previous harrison monument were all removed during excavation. The harrison monument set is 2.0 feet north and 0.1 foot west of the position of the previous harrison, rebar and railroad rail.

This corner was originally established as a wood post in June, 1820.

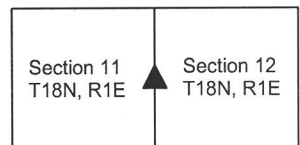


*Kenneth E. Hedge*  
Kenneth E. Hedge, County Surveyor

*James S. Swift*  
James S. Swift, IN LS 20200054

July 14, 2010, Revised March 7, 2013

Worth Township





PHOTOGRAPHIC DOCUMENTATION

Date of photography: July 16, 2009

The first stone found with the rebar and railroad rail.



The second, lower stone as found.



View from the south, looking across the lower stone and north along County Road 500 East.



All four found monuments. The rebar, rail and lower stone are undisturbed. The upper stone is reset in the approximate position as found.



The lower stone from above and south. The upper stone is lying on the adjacent asphalt.



For details and documentation, refer to related sheet "Section Corner Record."



# SECTION CORNER RECORD

SE 150-600

## BOONE COUNTY SURVEYOR'S OFFICE

State Plane grid coordinates NAD83 (NSRS 2007):

North: 1738316.88 East: 3156415.69 (U.S. survey feet) (corner 1)

North: 1738334.70 East: 3156415.31 (U.S. survey feet) (corner 2)

Type of monument: Harrison, 4" disk 'Section Corner' (corner 1 only)

Depth: 6 inches below gravel road surface

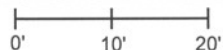
Indiana tie card references:

IN02\_T18NR1E12\_44

IN02\_T18NR2E07\_36

### CORNER WITNESS DETAIL

SCALE 1" = 20'



A - Mag nail set in E. side wood post, 0.7' a.g., 16.2'

B - Boone County witness mark, flush, 16.44'

C - Boone County witness mark, flush, 38.61'

All ties reference the harrison monument at corner 1.

Boone County witness mark is a 3/8" diameter x 2' long rebar bearing a metal cap stamped "Boone County Witness Point."

The harrison monument was set in place of a railroad found.

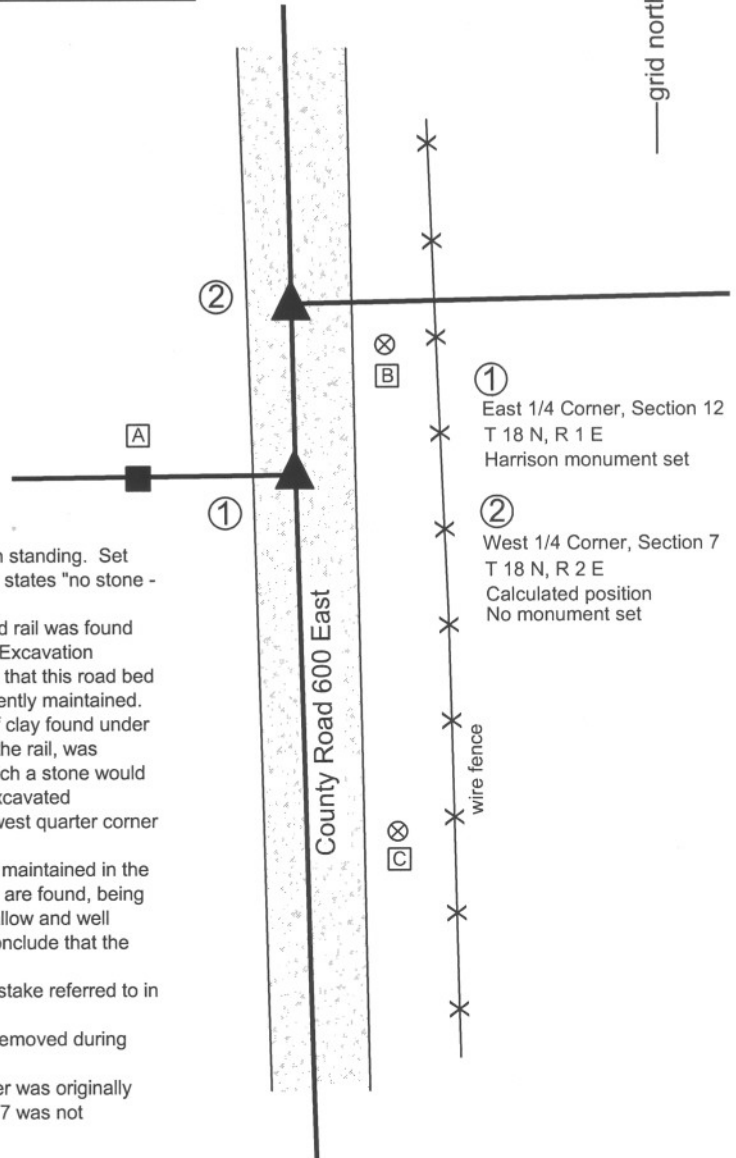
A BCS record of October 20, 1865 states "Reestablished from trees both standing. Set Rock 12,8,8 Beech stake under it." A BCS tied card dated August, 1970 states "no stone - set rail."

This corner was excavated on Jun 5, 2009. Prior to excavation a railroad rail was found on end, roughly flush with the top of the road, in the vicinity of corner 1. Excavation revealed no more specific evidence of the corner. Excavation did reveal that this road bed is extremely minimal in thickness. This is a county road but it is not currently maintained. Approximately 5 inches of gravel were found, below which is the layer of clay found under most roads in this area. An area 7 feet N-S by 7 feet E-W, centered on the rail, was excavated to well into the clay layer and certainly below the depth at which a stone would reasonably be expected to be found. Another hole of similar size was excavated approximately 17 feet north, in the vicinity of the calculated position for west quarter corner of section 7.

It is noted that although the road is not currently maintained, it has been maintained in the past. If the record stone were at the depth for which most corner stones are found, being at or slightly above the top of the clay layer, it would have been quite shallow and well within reach of the blade or teeth of a road grader. It is reasonable to conclude that the record stone was removed in the past, likely by a road grader. No evidence of the Beech stake referred to in the record was found.

The harrison monument was set in place of the railroad rail, which was removed during excavation.

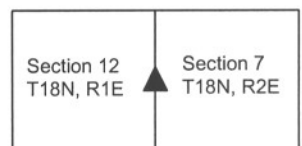
Only the east quarter corner of section 12 was monumented. This corner was originally established as a wood post in 1819. The west quarter corner of section 7 was not monumented by the original federal surveyors.



*Kenneth E. Hedge*  
 Kenneth E. Hedge, County Surveyor

*James S. Swift*  
 James S. Swift, IN LS 20200054  
 July 14, 2010

Worth Township



# SECTION CORNER RECORD

## BOONE COUNTY SURVEYOR'S OFFICE

SE 200-500

State Plane grid coordinates NAD83 (NSRS 2007):  
 North: 1735696.96 East: 3151149.53 (U.S. survey feet)

Type of monument: Harrison, 4" disk 'Section Corner'  
 Depth: One inch below adjacent road surface

Indiana tie card references:  
 IN02\_T18NR1E11\_80 IN02\_T18NR1E12\_76  
 IN02\_T18NR1E14\_08 IN02\_T18NR1E13\_00

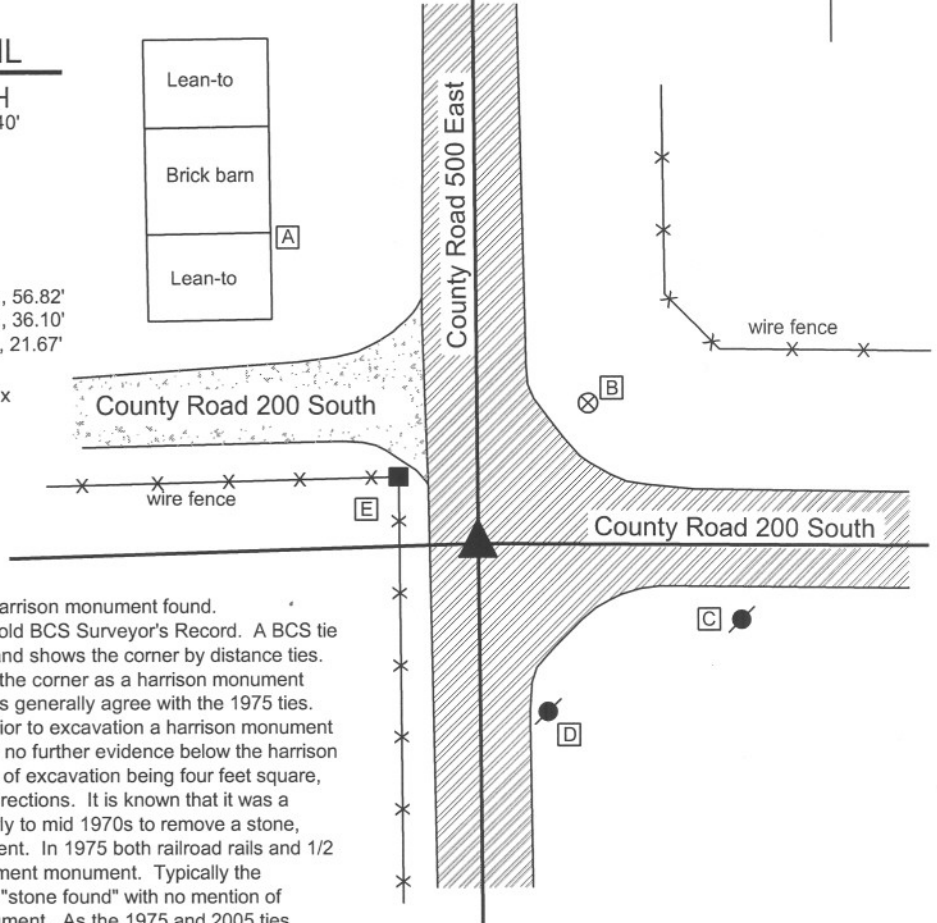


### CORNER WITNESS DETAIL

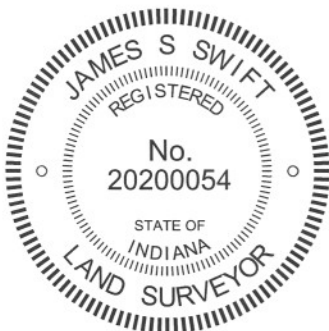
SCALE 1" = 40'

- A - S.E. corner, brick portion of barn, 78.00'
- B - Boone County witness mark, flush 37.15'
- C - Mag nail set in N. side power pole, 2.0' a.g., 56.82'
- D - Mag nail set in N. side power pole, 2.0' a.g., 36.10'
- E - Mag nail set in E. side power pole, 1.8' a.g., 21.67'

Boone County witness mark is a 3/8" diameter x 2' long rebar bearing a metal cap stamped "Boone County Witness Point."



The harrison monument was set in place of a harrison monument found. This corner is not specifically mentioned in the old BCS Surveyor's Record. A BCS tie card dated August, 1975 states "stone found" and shows the corner by distance ties. A BCS tie card dated October 15, 2005 shows the corner as a harrison monument with no documentation of source. The 2005 ties generally agree with the 1975 ties. This corner was excavated on July 9, 2008. Prior to excavation a harrison monument was found at the surface. Excavation revealed no further evidence below the harrison monument, nor any further evidence in an area of excavation being four feet square, centered on the harrison, oriented in cardinal directions. It is known that it was a common practice for BCS field crews in the early to mid 1970s to remove a stone, when found and replace it with a metal monument. In 1975 both railroad rails and 1/2 inch diameter rebars were used as the replacement monument. Typically the documentation for such an event simply states "stone found" with no mention of removing the stone or establishing a new monument. As the 1975 and 2005 ties generally agree, it is assumed that the harrison monument was set in place of a monument which was set in place of the stone, which was removed. The previous harrison was replaced with a new harrison monument at the same position. This corner was originally established as a wood post in 1820.



*Kenneth E. Hedge*  
 Kenneth E. Hedge, County Surveyor

*James S. Swift*  
 James S. Swift, IN LS 20200054  
 March 11, 2009, revised March, 2012

Worth Twp

Section 11 T18N, R1E	Section 12 T18N, R1E
Section 14 T18N, R1E	Section 13 T18N, R1E



# SECTION CORNER RECORD

SE 200-550

## BOONE COUNTY SURVEYOR'S OFFICE

State Plane grid coordinates NAD83 (NSRS 2007):

North: 1735680.24 East: 3153814.77 (U.S. survey feet)

Type of monument: Harrison, 4" disk 'Section Corner'

Depth: One inch below adjacent road surface

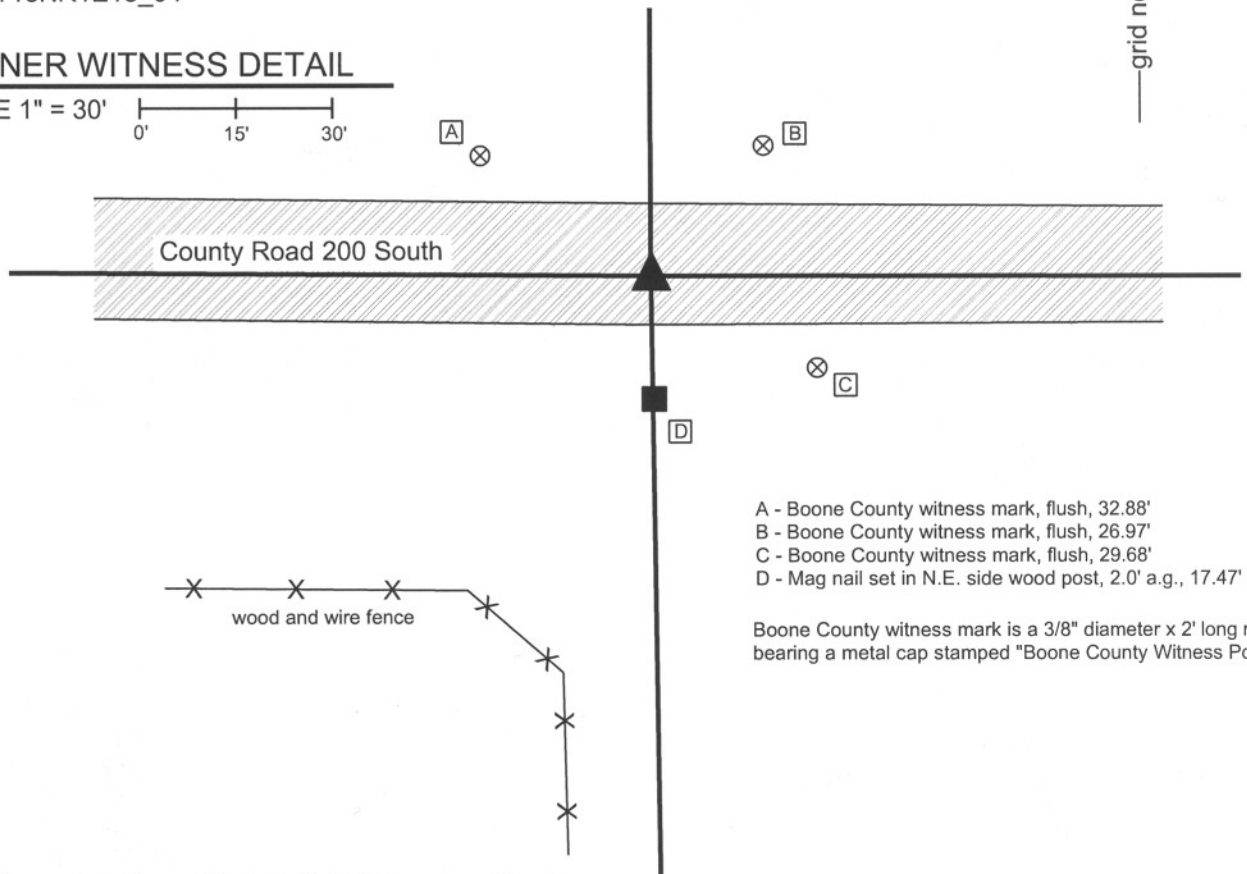
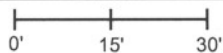
Indiana tie card references:

IN02\_T18NR1E12\_76

IN02\_T18NR1E13\_04

### CORNER WITNESS DETAIL

SCALE 1" = 30'



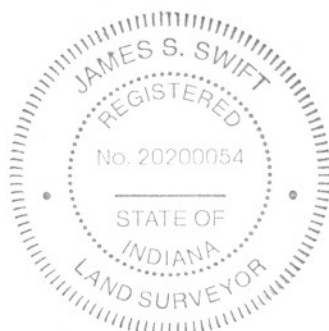
- A - Boone County witness mark, flush, 32.88'
- B - Boone County witness mark, flush, 26.97'
- C - Boone County witness mark, flush, 29.68'
- D - Mag nail set in N.E. side wood post, 2.0' a.g., 17.47'

Boone County witness mark is a 3/8" diameter x 2' long rebar bearing a metal cap stamped "Boone County Witness Point."

The harrison monument was set in place of a harrison monument found.

No old BCS stone records were found for this corner. A BCS tie card dated June 10, 1991 shows the corner as a 5/8 inch rebar 1.3 feet south of the center of County Road 200 South and slightly west of the north and south fences on each side of the road. A BCS tie card dated October 25, 2005 shows the corner as a harrison monument with no documentation, but with one tie similar to the one remaining tie from the 1991 tie card. This corner was excavated on June 9, 2008. Prior to excavation a harrison monument was visible at 2 inches deep, approximately 2 feet south of the center of the road. A hole 5 feet N-S by 5 feet E-W was excavated, extending 3.5 feet north and 3 feet east of the harrison. No rebar, corner stone or any other monuments were found. Numerous fist sized rocks were found in the base of the road, below which the clay layer begins at approximately 15 inches. It appears that the previous harrison monument replaced the rebar. A new harrison monument was replaced in the position of the previously existing harrison.

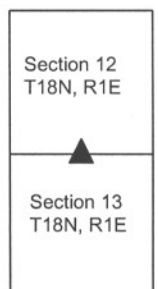
This corner was originally established as a wood post in June, 1820.



*Kenneth E. Hedge*  
Kenneth E. Hedge, County Surveyor

*James S. Swift*  
James S. Swift, IN LS 20200054  
March 11, 2009

Worth Township



# SECTION CORNER RECORD

SE 200-600

## BOONE COUNTY SURVEYOR'S OFFICE

State Plane grid coordinates NAD83 (NSRS 2007):

North: 1735675.03 East: 3156486.41 (U.S. survey feet)

Type of monument: Harrison, 4" disk 'Section Corner'

Depth: One inch below adjacent road surface

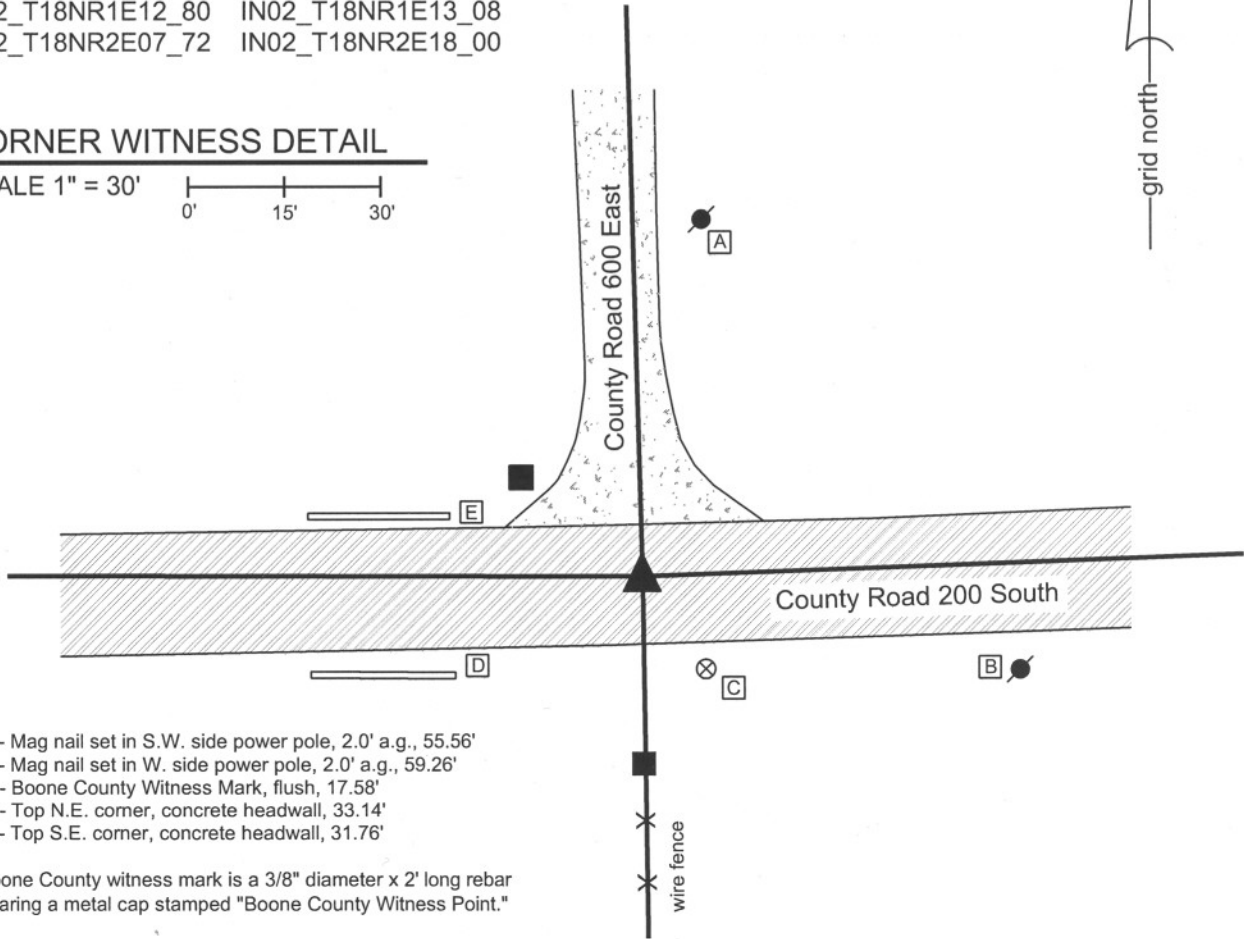
Indiana tie card references:

IN02\_T18NR1E12\_80 IN02\_T18NR1E13\_08

IN02\_T18NR2E07\_72 IN02\_T18NR2E18\_00

### CORNER WITNESS DETAIL

SCALE 1" = 30'



- A - Mag nail set in S.W. side power pole, 2.0' a.g., 55.56'
- B - Mag nail set in W. side power pole, 2.0' a.g., 59.26'
- C - Boone County Witness Mark, flush, 17.58'
- D - Top N.E. corner, concrete headwall, 33.14'
- E - Top S.E. corner, concrete headwall, 31.76'

Boone County witness mark is a 3/8" diameter x 2' long rebar bearing a metal cap stamped "Boone County Witness Point."

The harrison monument was set over the top, center of a stone found.

A BCS record of April 26, 1865 states "Reestablished from Oak tree stump. Set Rock 10.20.9 in Marked T..."

This corner was excavated on May 30, 2008. Prior to excavation no monuments were visible nor were any detected with a magnetic locator. Excavation centered on the approximate intersection of the centers of the two county roads yielded the record stone found at a depth of 14 inches below the road surface. The stone measures 10 inches NS by 9 inches EW and is 17 inches tall, set vertically, well embedded in the clay base layer below the road. No specific markings were observed on the stone. The stone may have been broken off at some point, as it is slightly shorter than the record height and does not bear the described markings. The harrison monument was set directly over the top of the stone.

This corner was originally established as a wood post in 1819. No record offset was recorded as the closing corner is coincident with the standard corner.



*Kenneth E. Hedge*  
 Kenneth E. Hedge, County Surveyor

*James S. Swift*  
 James S. Swift, IN LS 20200054  
 March 11, 2009

Worth Township

Section 12 T18N, R1E	Section 7 T18N, R2E
Section 13 T18N, R1E	Section 18 T18N, R2E



PHOTOGRAPHIC DOCUMENTATION

Date of photography: May 30, 2008

Corner stone, view from West.

Note top of clay layer exposed and visible around stone.



Corner stone, view from South.



For details and documentation, refer to related sheet "Section Corner Record."