

# SECTION CORNER RECORD

SE 800-500

## BOONE COUNTY SURVEYOR'S OFFICE

State Plane grid coordinates NAD83 (2011):

North: 1703737.85 East: 3151716.16 (U.S. survey feet)

Type of monument: stone with etched X mark

Depth: flush with adjacent ground

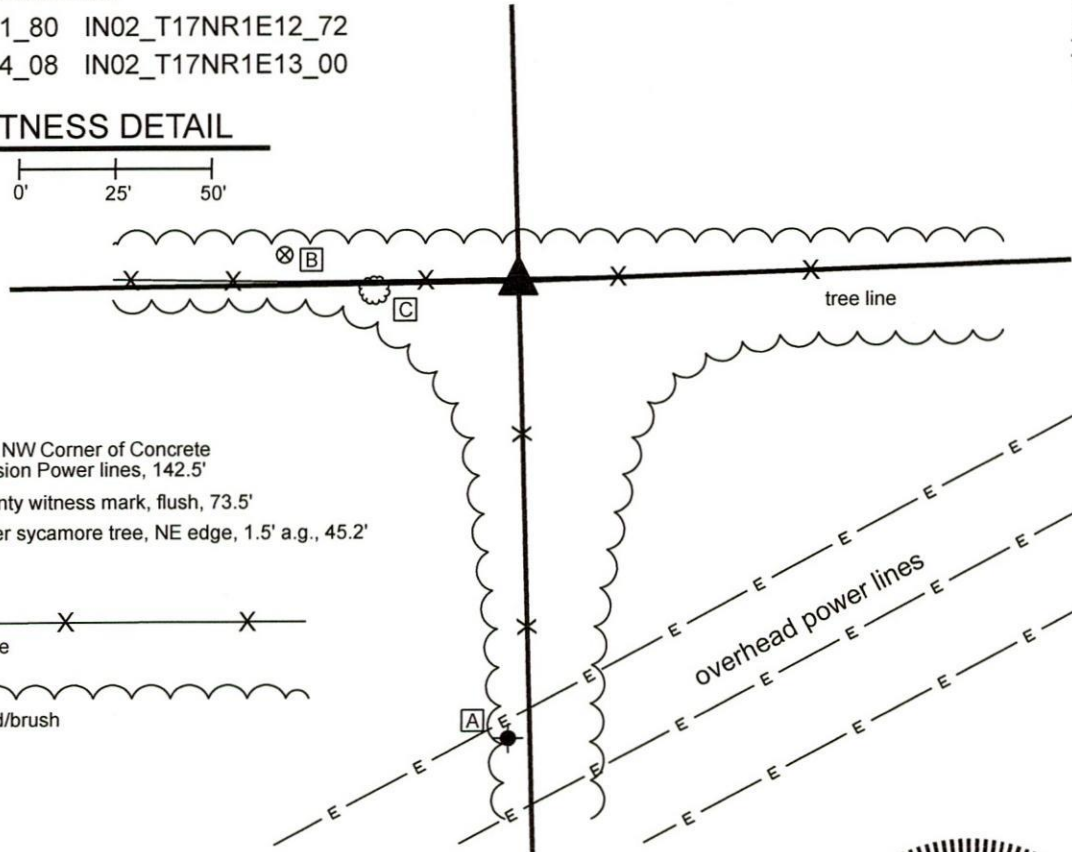
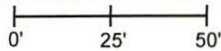
Indiana tie card references:

IN02\_T17NR1E11\_80 IN02\_T17NR1E12\_72

IN02\_T17NR1E14\_08 IN02\_T17NR1E13\_00

### CORNER WITNESS DETAIL

SCALE 1" = 50'



A - X carved in NW Corner of Concrete pad Hi-Tension Power lines, 142.5'

B - Boone County witness mark, flush, 73.5'

C - 25" diameter sycamore tree, NE edge, 1.5' a.g., 45.2'



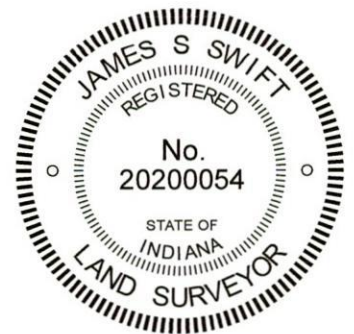
- wire fence



- edge field/brush

The stone was found in place and held as marking the corner.

No specific descriptions of this corner were found in the BCS Surveyor's Record beyond the original establishment of the corner as a wood post in 1820. A Hendricks County tie card dated March 11, 2004 and confirmed by field notes dated January 4, 2018 shows the corner as being marked by a stone 4 inches by 10 inches on top with an X cut in the top. This stone was found flush with the surface of the ground at the southwest edge of a wood corner post. The mark on the top of the stone is a deeply etched X mark ground by a drill driven grinder, typical of marks recently established on stones by the Hendricks County Surveyor's Office. The stone was accepted as the best available evidence of the corner and held as marking the corner.



  
Kenneth E. Hedge, County Surveyor

  
James S. Swift, IN LS 20200054

March 17, 2020

Perry Township  
Boone County

Section 11  
T17N, R1E

Section 12  
T17N, R1E

Brown Township  
Hendricks County

Section 14  
T17N, R1E

Section 13  
T17N, R1E