

SECTION CORNER RECORD

BOONE COUNTY SURVEYOR'S OFFICE

NE 400-400

State Plane grid coordinates NAD83 (CORS96):

North: 1766962.85 East: 3145574.53 (U.S. survey feet)

Type of monument: Harrison, 4" disk 'Section Corner'

Depth: six inches below adjacent gravel road surface

Indiana tie card references:

IN02_T19NR1E10_80

IN02_T19NR1E11_72

IN02_T19NR1E15_08

IN02_T19NR1E14_00

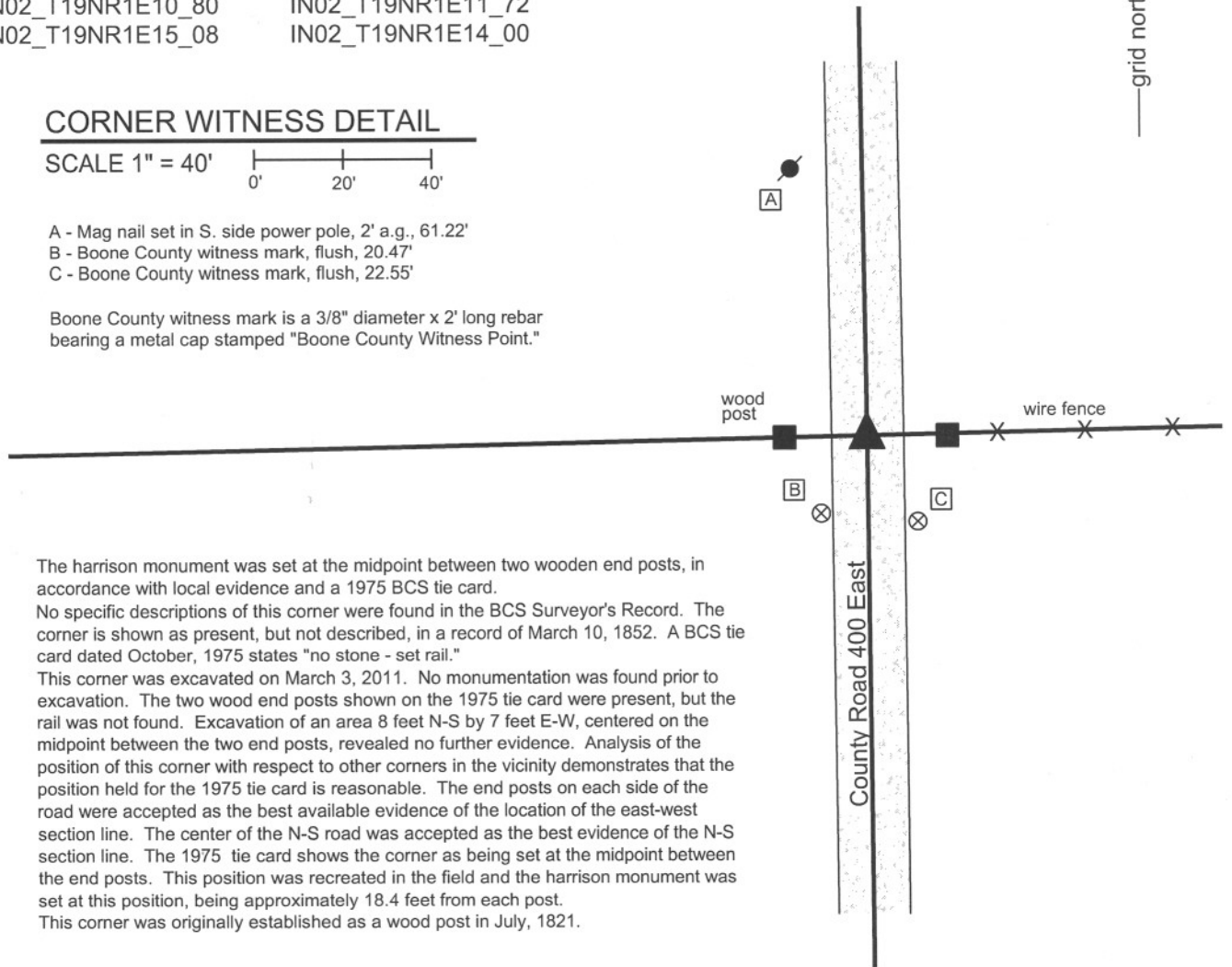
CORNER WITNESS DETAIL

SCALE 1" = 40'

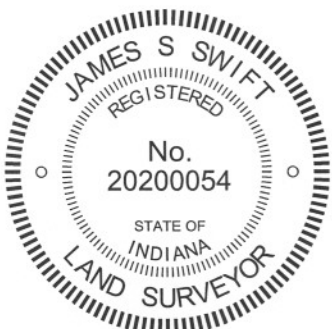


- A - Mag nail set in S. side power pole, 2' a.g., 61.22'
- B - Boone County witness mark, flush, 20.47'
- C - Boone County witness mark, flush, 22.55'

Boone County witness mark is a 3/8" diameter x 2' long rebar bearing a metal cap stamped "Boone County Witness Point."



The Harrison monument was set at the midpoint between two wooden end posts, in accordance with local evidence and a 1975 BCS tie card. No specific descriptions of this corner were found in the BCS Surveyor's Record. The corner is shown as present, but not described, in a record of March 10, 1852. A BCS tie card dated October, 1975 states "no stone - set rail." This corner was excavated on March 3, 2011. No monumentation was found prior to excavation. The two wood end posts shown on the 1975 tie card were present, but the rail was not found. Excavation of an area 8 feet N-S by 7 feet E-W, centered on the midpoint between the two end posts, revealed no further evidence. Analysis of the position of this corner with respect to other corners in the vicinity demonstrates that the position held for the 1975 tie card is reasonable. The end posts on each side of the road were accepted as the best available evidence of the location of the east-west section line. The center of the N-S road was accepted as the best evidence of the N-S section line. The 1975 tie card shows the corner as being set at the midpoint between the end posts. This position was recreated in the field and the Harrison monument was set at this position, being approximately 18.4 feet from each post. This corner was originally established as a wood post in July, 1821.



Kenneth E. Hedge
 Kenneth E. Hedge, County Surveyor

James S. Swift
 James S. Swift, IN LS 20200054
 March 1, 2012

Clinton Twp	Section 10 T19N, R1E	Section 11 T19N, R1E
Center Twp	Section 15 T19N, R1E	Section 14 T19N, R1E

SECTION CORNER RECORD

BOONE COUNTY SURVEYOR'S OFFICE

NE 400-450

State Plane grid coordinates NAD83 (2011):
 North: 1767008.07 East: 3148178.68 (U.S. survey feet)

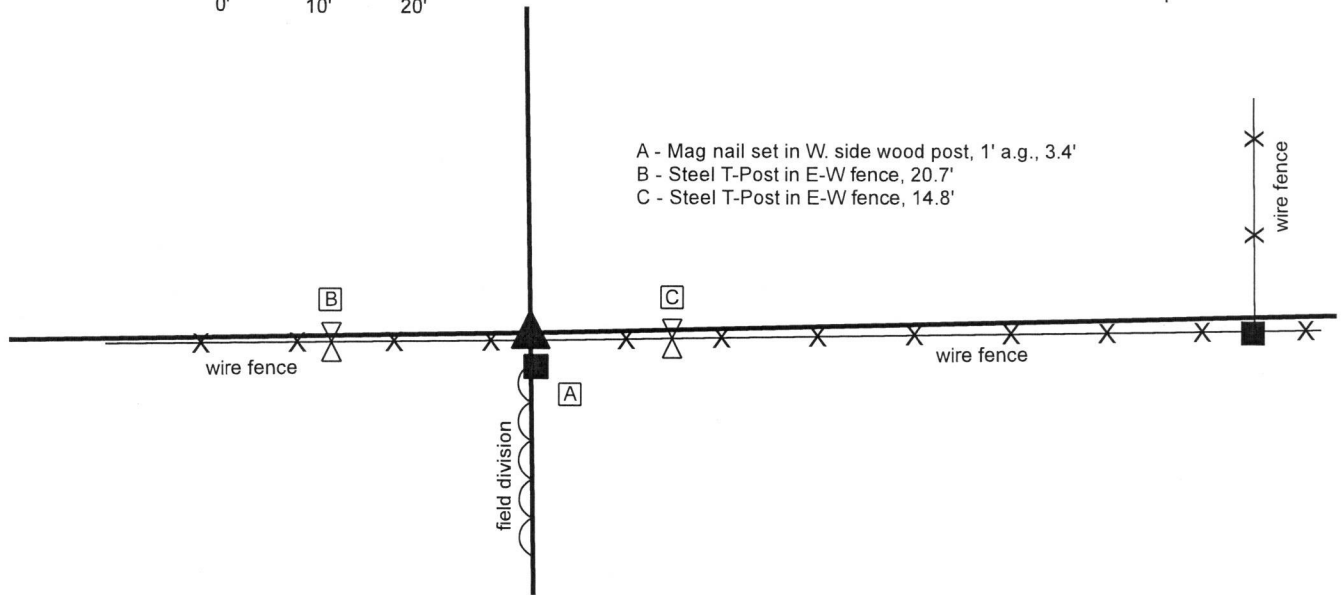
Type of monument: Harrison, 4" disk 'Section Corner'
 Depth: Three inches above adjacent ground

Indiana tie card references:
 IN02_T19NR1E11_76 IN02_T19NR1E14_04



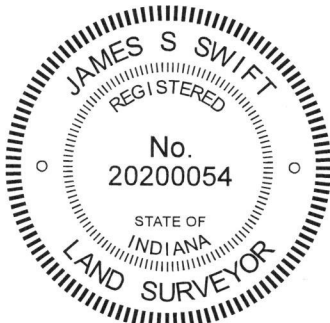
CORNER WITNESS DETAIL

SCALE 1" = 20'



- A - Mag nail set in W. side wood post, 1' a.g., 3.4'
- B - Steel T-Post in E-W fence, 20.7'
- C - Steel T-Post in E-W fence, 14.8'

The Harrison monument was set in place of a stone found.
 A BCS record of June 26-27, 1865 states, with respect to this corner, "Reestablished by measurement. Set a rock 14.9 by 6 marked 1/4. And mark on top. Brick bat under it."
 A BCS tie card dated September 1, 2005 shows the corner as a wood post with a PK nail in the N.E. corner.
 This corner was excavated on April 19, 2018. Prior to excavation, the wood post shown as the corner on the 2005 tie card was found leaning significantly toward the east. The post was west of the field division to the south. Another wood post was found south of the primary east-west fence, in-line with the field division to the south. Excavation in the vicinity of the two posts revealed the stone described in the 1865 record at 3 inches deep, slightly north of the standing east-west fence and generally in line with the field division to the south. The stone measured 9 inches N-S by 6 inches E-W by 17 inches tall. An etched mark of "1/4" was clearly visible on the south edge of the stone. As found, the stone was vertical and appeared to be undisturbed, with a distinct high point on the top of the stone. The stone was removed and a piece of brick was found directly below the stone at 19 inches deep. With the dimensions of the stone generally matching the record and the presence of the brick bat below the stone, the stone was accepted as being the same monument described in the 1865 record and believed to be situated in the same position as it was set in 1865. The piece of brick was left in place. 3 rebars of 1/2 inch diameter were driven into the ground at angles around the brick and a Harrison monument was constructed above the piece of brick. The monument is 0.4 foot north and 2.5 feet east of the coordinate reported for the corner, shown as a wood post, on the 2005 tie card.
 This corner was originally established as a wood post in 1821.



Kenneth E. Hedge
 Kenneth E. Hedge, County Surveyor

James S. Swift
 James S. Swift, IN LS 20200054
 May 9, 2018

Clinton
 Township

Section 11
 T19N, R1E

Center
 Township

Section 14
 T19N, R1E

SECTION CORNER RECORD

BOONE COUNTY SURVEYOR'S OFFICE

NE 400-500

State Plane grid coordinates NAD83 (CORS96):
 North: 1767069.82 East: 1767069.82 (U.S. survey feet)

Type of monument: Harrison, 4" disk 'Section Corner'
 Depth: One inch below adjacent road surface

Indiana tie card references:
 IN02_T19NR1E11_80 IN02_T19NR1E12_72
 IN02_T19NR1E14_08 IN02_T19NR1E13_00

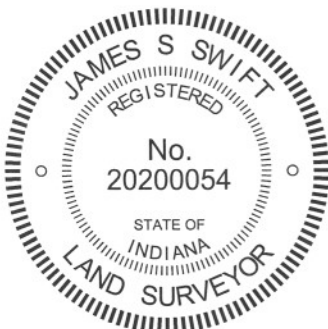
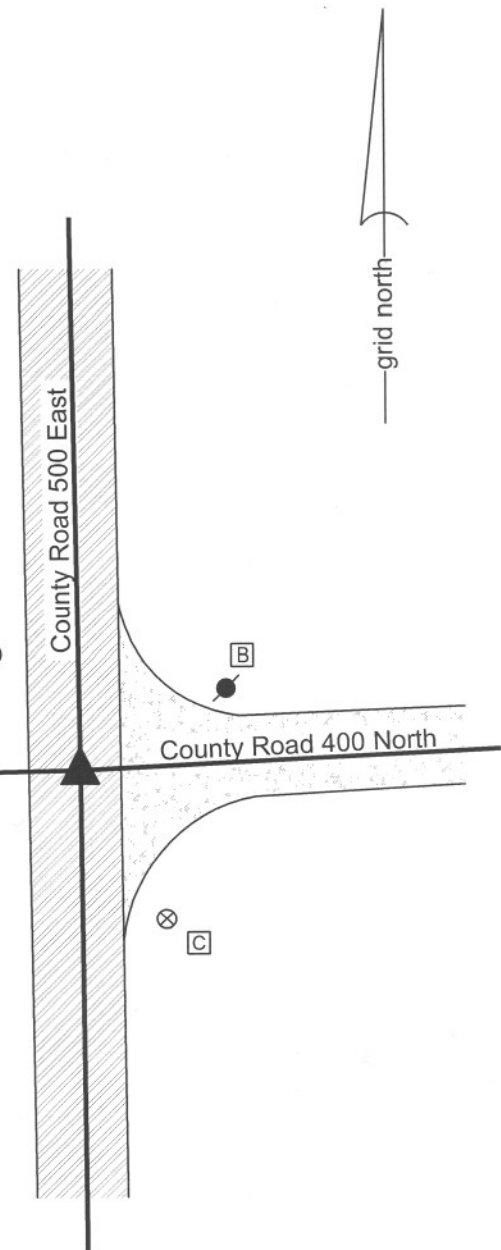
CORNER WITNESS DETAIL

SCALE 1" = 40'

- A - Boone County witness mark, flush, 30.34'
- B - Mag nail set in W. side power pole, 2' a.g. 33.24'
- C - Boone County witness mark, flush, 35.70'

Boone County witness mark is a 3/8" diameter x 2' long rebar bearing a metal cap stamped "Boone County Witness Point."

The harrison monument was set over a stone found.
 A BCS record of June 26-27, 1865 states Reestablished from Oak B.T. Set two rocks one 5.3.2 in (two notches in sharp corner). Top rock 13.12.6 in. + on side."
 A BCS tie card dated August 15, 1868 states "no stone." A BCS tie card dated May 29, 1991 shows the corner as a rail found. A BCS tie card dated August 3, 2005 shows the corner as a harrison monument with no documentation of source.
 This corner was excavated on April 6, 2011. Prior to excavation a harrison monument was found at the surface. Excavation revealed a railroad rail found at 5 inches deep, below the harrison. It is most likely that the rail was set in association with the creation of the 1968 tie card. Further excavation revealed the stone described in the 1865 record at 22 inches deep. The stone measures 12 inches E-W by 6 inches N-S by 13 inches tall. The rock has a rough surface. A vague chiseled + was evident on the N. side. The stone was left in place and the harrison monument was set over the top of the stone, in line with the chiseled +. The harrison monument and railroad rail, both removed during excavation, had been 0.9 foot north and 1.5 feet west of the stone.
 This corner was originally established as a wood post in June, 1822.



Kenneth E. Hedge
 Kenneth E. Hedge, County Surveyor

James S. Swift
 James S. Swift, IN LS 20200054
 March 1, 2012

Clinton Twp	Section 11 T19N, R1E	Section 12 T19N, R1E
Center Twp	Section 14 T19N, R1E	Section 13 T19N, R1E

PHOTOGRAPHIC DOCUMENTATION

Date of photography: April 6, 2011

View from the west looking across the stone (in shadows) and east along County Road 400 North.



View of the stone as first exposed.



The stone from the north.



The stone from the south.



For details and documentation, refer to related sheet "Section Corner Record."

SECTION CORNER RECORD

NE 450-400

BOONE COUNTY SURVEYOR'S OFFICE

State Plane grid coordinates NAD83 (2011):

North: 1769602.04 East: 3145531.42 (U.S. survey feet)

Type of monument: Harrison, 4" disk 'Section Corner'

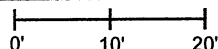
Depth: Flush with surrounding ground

Indiana tie card references:

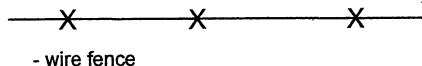
IN02_T19NR1E10_44 IN02_T19NR1E11_36

CORNER WITNESS DETAIL

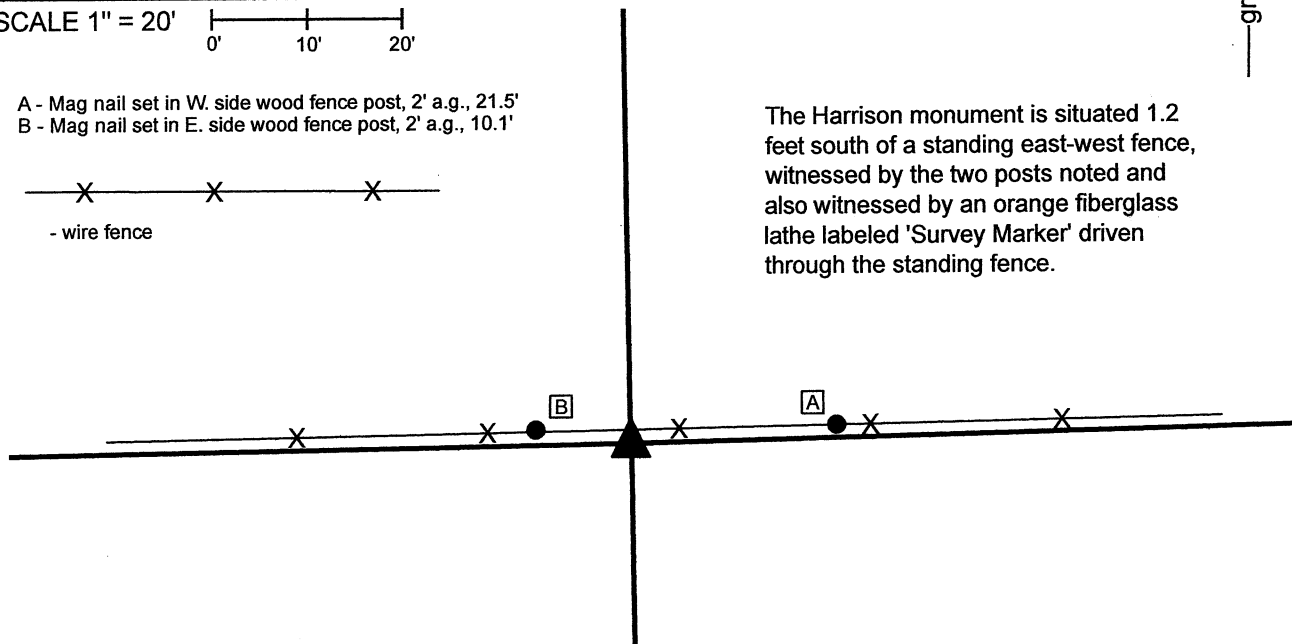
SCALE 1" = 20'



- A - Mag nail set in W. side wood fence post, 2' a.g., 21.5'
- B - Mag nail set in E. side wood fence post, 2' a.g., 10.1'



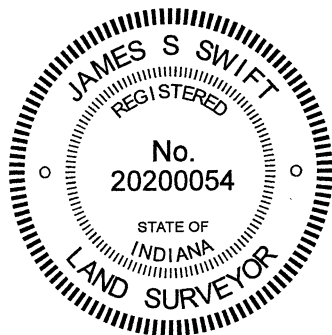
The Harrison monument is situated 1.2 feet south of a standing east-west fence, witnessed by the two posts noted and also witnessed by an orange fiberglass lathe labeled 'Survey Marker' driven through the standing fence.



The Harrison monument was set in place of a rebar found.

No specific descriptions of this corner were found in the BCS Surveyor's Record beyond the original establishment of the corner as a wood post in 1822. No recent BCS tie cards were found referencing the corner, nor were any surveys found in the Office of the Boone County Surveyor's Office found which reference the corner.

The position of this corner was investigated extensively in the Spring of 2018. At that time, a rebar with plastic cap stamped 'Weihe Engr. LS 10398' was found slightly south of the standing fence. Various accessory evidence was located and analyzed but no firm conclusion about the corner was reached at that time, as up to approximately six feet of uncertainty in the east-west dimension was noted with respect to potential positions for the corner based on accessory evidence of corner posts and roadways in the general vicinity of the corner. On November 10, 2021, it was observed that the position of the rebar fit precisely at a double-distance prolongation of a line connecting an ancient wood corner post found providing evidence of the center of section 10 and a stone found providing evidence of the northeast corner of the west half of the southeast quarter of section 10. Based on the findings of the previous investigation of this corner in 2018, this evidence appeared to be the most reliable, with the least uncertainty. As noted, the position of the rebar agrees precisely with this evidence. The rebar is south of a standing fence, but it clearly evident in the field that this is not an ancient fence. Exploratory manual excavation and probing also clearly indicates that a sub-surface drainage tile is situated on the south edge of the fence as well. Any ancient evidence of the corner in the form of stone or old corner post would have been removed during the installation of this field tile. Finding no contrary evidence which is sufficiently compelling to override the evidence of the rebar being in agreement with the aforementioned corner post and stone, the rebar was held as marking the corner. The rebar was removed and replaced with a Harrison monument in the same position on November 10, 2021.

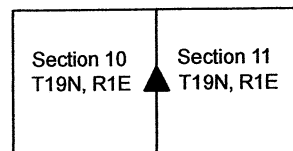


Kenneth E. Hedge
 Kenneth E. Hedge, County Surveyor

James S. Swift
 James S. Swift, IN LS 20200054

November 15, 2021

Clinton Township



SECTION CORNER RECORD

BOONE COUNTY SURVEYOR'S OFFICE

NE 450-500

State Plane grid coordinates NAD83 (CORS96):

North: 1769714.39 East: 3150751.58 (U.S. survey feet)

Type of monument: Harrison, 4" disk 'Section Corner'

Depth: One inch below adjacent road surface

Indiana tie card references:

IN02_T19NR1E11_44

IN02_T19NR1E12_36

CORNER WITNESS DETAIL

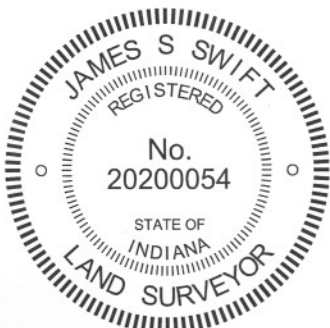
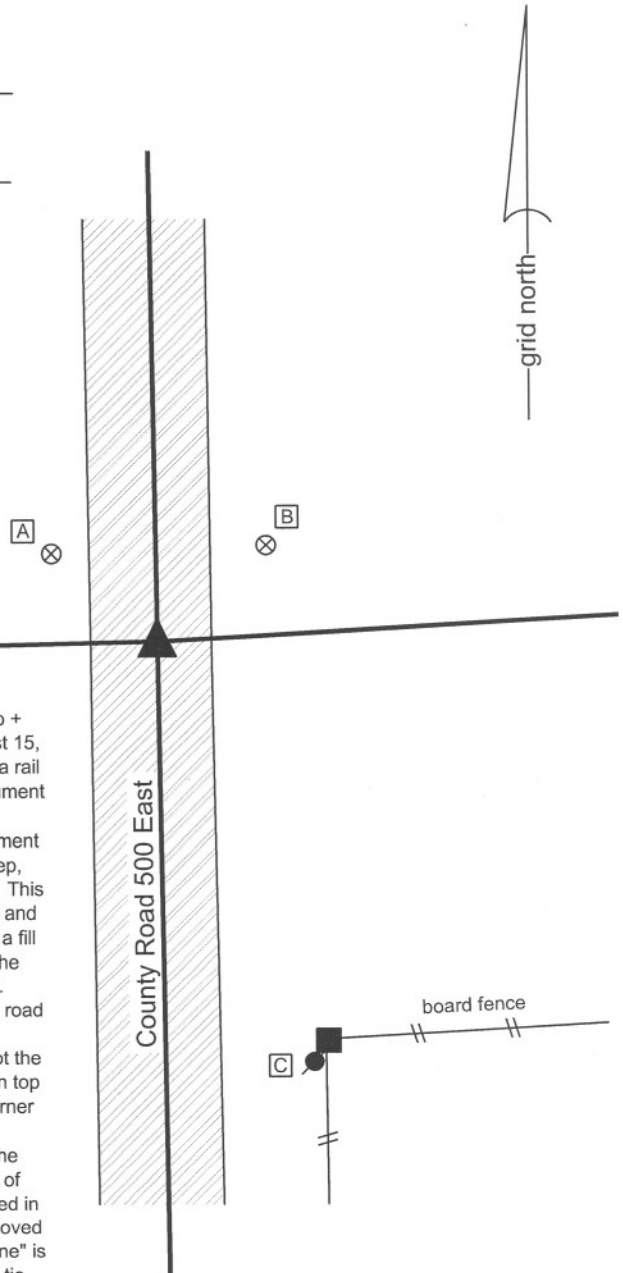
SCALE 1" = 30'

- A - Boone County witness mark, flush, 21.44'
- B - Boone County witness mark, flush, 22.59'
- C - Mag nail set in N. side power pole, 2' a.g., 68.80'

Boone County witness mark is a 3/8" diameter x 2' long rebar bearing a metal cap stamped "Boone County Witness Point."

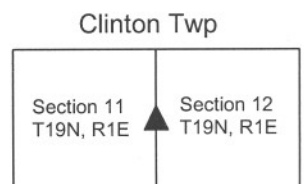
The harrison monument was set in place of two stones found. A BCS record of June 26-27 states Set Rock 17 by 15 in. (is rounding) mark on top + on side Brick Bat marked "+" on end placed under it." A BCS tie card dated August 15, 1968 states "No Stone." A BCS tie card dated May 30, 1991 shows the corner as a rail found. A BCS tie card dated August 3, 2005 shows the corner as a harrison monument with no documentation of source.

This corner was excavated on July 12, 2011. Prior to excavation a harrison monument was found at the surface. Excavation revealed a railroad rail found at 7 inches deep, below the harrison. Further excavation revealed a stone found at 13 inches deep. This stone was 10 inches tall by 5 inches E-W by 9 inches N-S. The stone was vertical and embedded in a clay-like substance, though the substance appeared to be more of a fill material providing a base for the road bed than the typical clay layer found below the road bed. The stone was removed and another stone was found directly below it. The lower stone was also vertical and was clearly embedded in the clay below the road bed. The lower stone measured 11 inches tall by 6 inches E-W by 9 inches N-S. Neither of the stones bore evidence of specific markings. The found stones are not the dimensions described in the 1865 record. They were, however, vertical, directly on top of one another and evidently set as corner markers. No further evidence of the corner was found in a area of excavation being 5x5 foot square, centered on the found harrison monument. It is not known why the 1865 record stone was not found. The presence of the clay like substance which appears to be a fill material for the base of the road may also explain the lack of the record stone. Perhaps excavation occurred in this area in preparation for the installation of the road base and the stone was removed as part of that process. In any case, the reference on the 1968 tie card of "no stone" is clearly erroneous. It is most likely that the rail was set in association with the 1968 tie card. The two vertical stones were accepted as the best available evidence of the corner. The stones were removed and a harrison monument was set in the position of the top, center of the top stone. The found harrison monument and railroad rail, both removed during excavation, had been 1 foot south and 0.7 foot west of the stones. This corner was originally established as a wood post in June, 1822.



Kenneth E. Hedge
 Kenneth E. Hedge, County Surveyor

James S. Swift
 James S. Swift, IN LS 20200054
 March 1, 2012



PHOTOGRAPHIC DOCUMENTATION

Date of photography: July 12, 2011

View of the upper stone as first exposed.



View of the upper stone as fully exposed.



View from the north, looking across the upper stone and south along County Road 500 East.



View of the lower stone as first exposed.



View of the lower stone partially exposed. Note also the upper stone on the pavement to the right.



For details and documentation, refer to related sheet "Section Corner Record."

SECTION CORNER RECORD

NE 500-400

BOONE COUNTY SURVEYOR'S OFFICE

State Plane grid coordinates NAD83 (2011):

North: 1772240.31 East: 3145512.40 (U.S. survey feet)

Type of monument: 24" length of 5/8-inch diameter rebar with aluminum cap stamped 'Boone County Surveyor'

Depth: Fourteen inches below surrounding ground

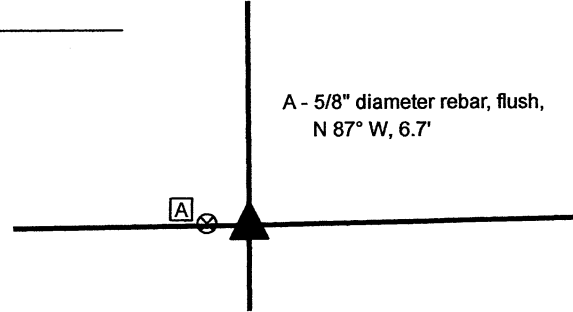
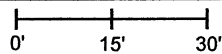
Indiana tie card references:

IN02_T19NR1E02_72 IN02_T19NR1E03_80

IN02_T19NR1E10_08 IN02_T19NR1E11_00

CORNER WITNESS DETAIL

SCALE 1" = 30'



The rebar with metal cap stamped 'Boone County Surveyor' was set at a computed position.

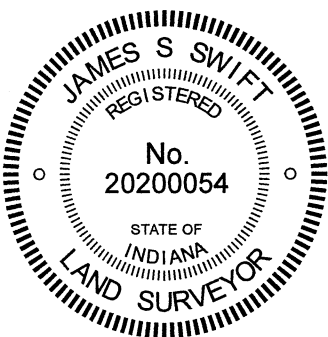
No specific descriptions of this corner were found in the BCS Surveyor's Record beyond the original establishment of the corner as a wood post in 1822.

No recent BCS tie cards were found referencing this corner, nor were any surveys recorded in the Office of the Boone County Recorder found specifically referencing the corner.

This corner has been investigated several times between 2017 and 2021. The corner falls in a tilled field. A 5/8-inch rebar was found in 2021. The rebar is flush with the ground with no cap and does not appear to be old. This rebar had not been found previously and no record of it being set was found in the county records. Evidence of the line between the southwest quarter of Section 2 and southeast quarter of Section 3 was found in the form of an old fence north of Elizaville Road, newer fencing south of the road and an iron pipe evidently marking the southeast corner Grinstead property in Section 3, Instrument 2015006355, Boone County Recorder. A monument called as being at the intersection of Elizaville Road and the east line of the southeast quarter of section 3 on a survey recorded as Instrument 2020012268 was not found. Evidence of the line between the southeast quarter of Section 3 and the northeast quarter of Section 10 was found in the form of steel t-post at an old fence intersection (wood corner post found on the ground nearby) west of Elizaville Road. Evidence of the line between the southwest quarter of Section 2 and the northwest quarter of Section 11 was found in the form of numerous wood posts and standing fence. The subject corner is also referenced in the description of the Jones property in Section 3, Instrument 2019001022. Rebars with metal caps stamped Carl Anderson ENGR were found marking or witnessing several corners of this property.

Based on analysis of the various evidence noted above, a position for the corner was computed at the intersection of the southerly prolongation of a line connecting the Harrison monument at the east quarter corner of Section 3 (see BCS Corner NE 550-400) through the iron pipe at the southeast corner of the Grinstead property and the westerly prolongation of a line connecting the Harrison monument at the south quarter corner of Section 2 (see BCS Corner NE 500-450) through wood posts found 320 feet and 565 feet, respectively, east of the computed position. This position falls 6.6 feet east and 0.5 foot south of the rebar found flush in the tilled field and falls 3.4 feet east of a position computed with respect to the found Anderson rebars and deed calls in Instrument 2019001022. The line between the southeast quarter of Section 3 and southwest quarter of Section 2, established by holding the computed position, fits remarkably well with the fencing found on each side of Elizaville Road. The line between the northeast quarter of Section 10 and the northwest quarter of Section 11 fits remarkably well with a post found on the north side of County Road 475 and the implied deed distance of 5 chains east of that line, per Instrument 200600002317. The post and fence evidence to the east and west also fit well with the computed position. A wood corner post found providing the local evidence of the northeast corner of the northwest quarter of the northwest quarter of Section 11 falls 4.8 feet south and 3.2 feet east of a computed midpoint. This variation represents the least best-fit of the evidence, but also supports the establishment of the corner as east of the found rebar and computed position with respect to the aforementioned Anderson rebars. It is noted that the deed for the property surrounding the corner, Starkey, was not found. The references to that document in the transfer books in the Boone County Auditors Office direct the researcher to the deed for a different property. Hence, the description of this property was not utilized in determining the position of the corner.

As noted above, the position for the corner was computed with respect the preponderance of physical evidence and dependent deed references. The computed position was held. A rebar with metal cap stamped 'Boone County Surveyor' was set at 14 inches deep in the tilled field on November 23, 2021. The existing rebar, flush with the field, was left in place and is noted as a reference tie.



Kenneth E. Hedge
 Kenneth E. Hedge, County Surveyor

James S. Swift
 James S. Swift, IN LS 20200054

December 1, 2021

Clinton Township

Section 3 T19N, R1E	Section 2 T19N, R1E
Section 10 T19N, R1E	Section 11 T19N, R1E

SECTION CORNER RECORD

BOONE COUNTY SURVEYOR'S OFFICE

NE 500-450

State Plane grid coordinates NAD83 (CORS96):
 North: 1772293.21 East: 3148098.16 (U.S. survey feet)

Type of monument: Harrison, 4" disk 'Section Corner'
 Depth: two inches above adjacent ground

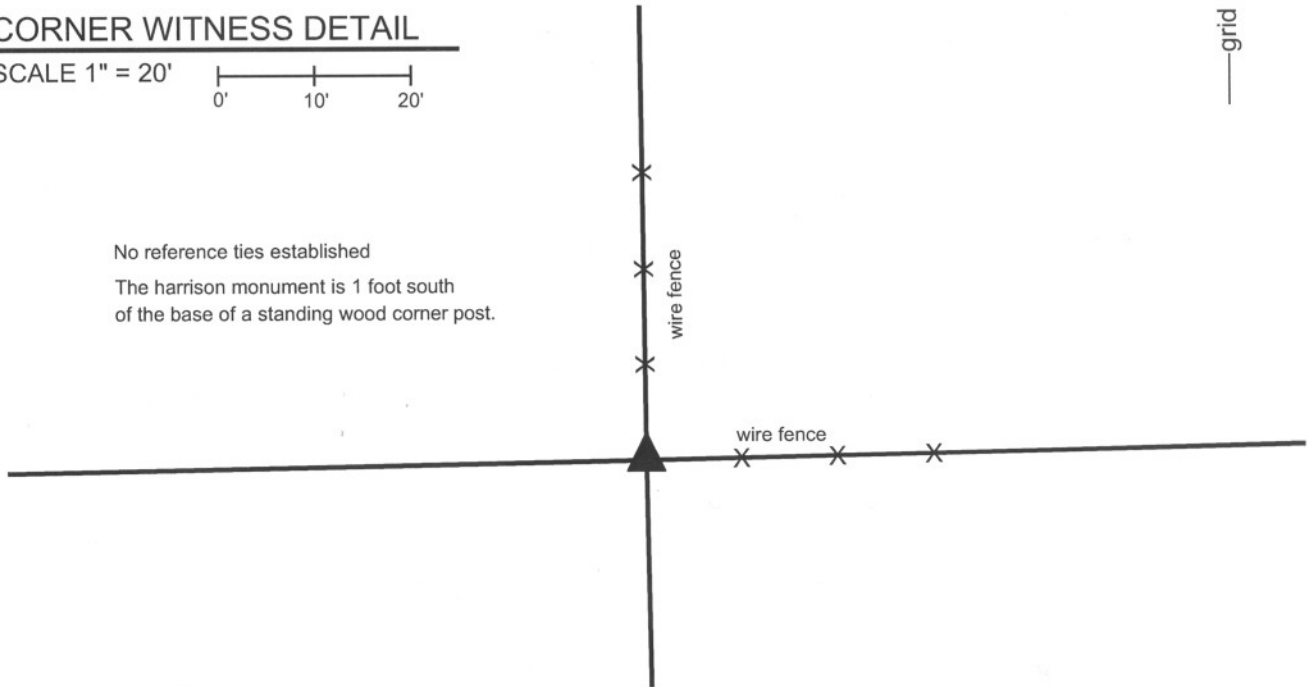
Indiana tie card references:
 IN02_T19NR1E02_76
 IN02_T19NR1E11_04



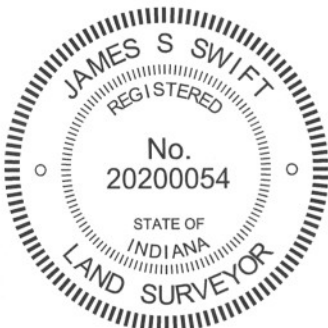
CORNER WITNESS DETAIL

SCALE 1" = 20'
 0' 10' 20'

No reference ties established
 The harrison monument is 1 foot south
 of the base of a standing wood corner post.



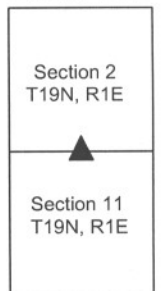
The harrison monument was set in place of a rebar found and the remnants of an old post found. A BCS record of November 14-15, 1872 states "found by intersection of lines." A BCS record of February 7, 1876 states "Reestablished at intersection of lines. Set Rock 10.16.16 in + above this another 23.18.12 +". No recent BCS tie cards were found referencing this corner. This corner was originally excavated on October 24, 2011. Prior to excavation a 5/8 inch diameter rebar was found 1 foot south of an old wood corner post with existing fence to the north and cut-off fence to the west. The rebar was in line with fence to the east which was not attached to the post. Excavation at the south edge of the post revealed that the rebar was driven into the remains of an old post with several brace rocks around it. None of the rocks appeared to be purposely set as corner stones. The stones described in the 1876 record were not found. A rock which was 2 inches larger in each dimension than the record stone, being 25" x 20" x 14" was found lying on top of the ground approximately 4 feet ENE of the rebar and remnant post. The stone was not embedded in the dirt, no marks were found and no further evidence was found under the rock. The old post remnants, through which the rebar was driven, were accepted as the best available evidence of the corner. The rebar and post remnants were removed and the harrison monument was set in their place.
 This corner was originally established as a wood post in June, 1822.



Kenneth E. Hedge
 Kenneth E. Hedge, County Surveyor

James S. Swift
 James S. Swift, IN LS 20200054
 March 1, 2012

Clinton Twp



PHOTOGRAPHIC DOCUMENTATION

Date of photography: October 31 & November 1, 2011

The standing post and the base of the old post, with rebar, from above.



The base of the old post, with rebar.



The standing post and the base of the old post, with rebar, from above and east.



The harrison monument, set in place of the base of the old post and rebar.



For details and documentation, refer to related sheet "Section Corner Record."

SECTION CORNER RECORD

BOONE COUNTY SURVEYOR'S OFFICE

NE 500-500

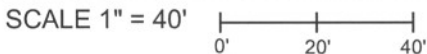
State Plane grid coordinates NAD83 (CORS96):
 North: 1772347.94 East: 3150712.09 (U.S. survey feet)

Type of monument: Harrison, 4" disk 'Section Corner'
 Depth: One inch below adjacent road surface

Indiana tie card references:
 IN02_T19NR1E02_80 IN02_T19NR1E01_72
 IN02_T19NR1E11_08 IN02_T19NR1E12_00



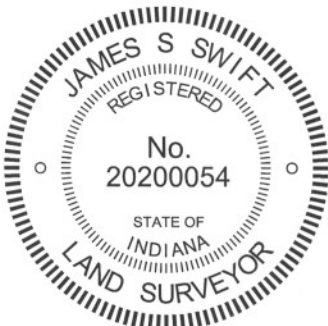
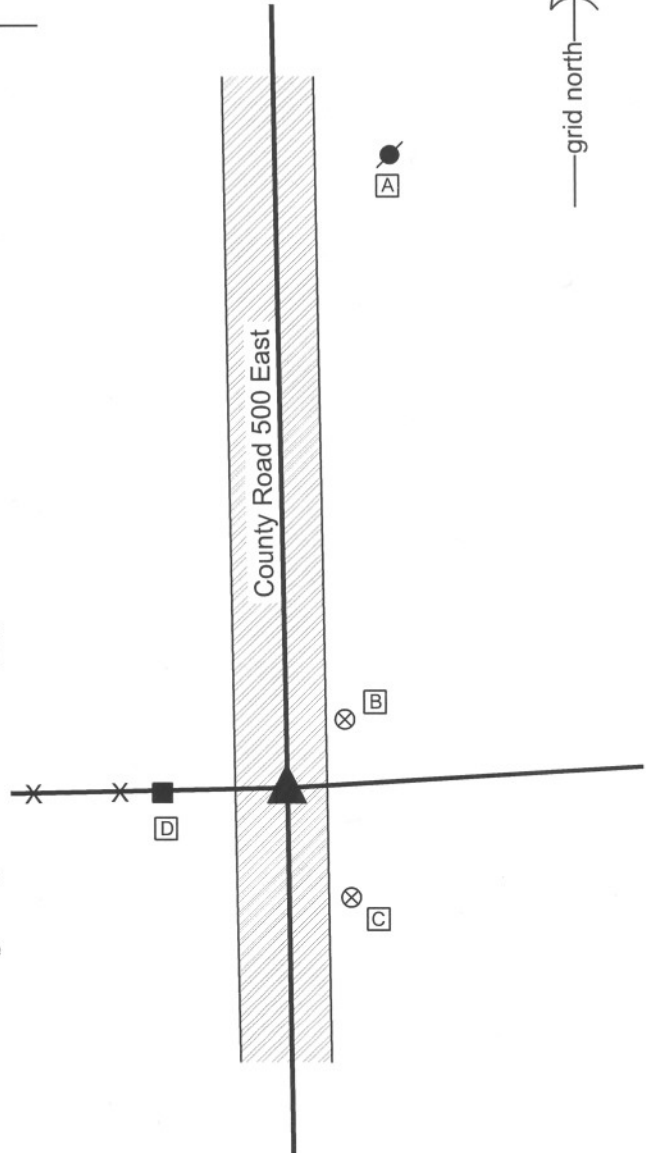
CORNER WITNESS DETAIL



- A - Mag nail set in S. side power pole, 2' a.g., 131.71'
- B - Boone County witness mark, flush, 18.57'
- C - Boone County witness mark, flush, 26.44'
- D - Mag nail set in E. side wood post, 2' a.g., 24.76'

Boone County witness mark is a 3/8" diameter x 2' long rebar bearing a metal cap stamped "Boone County Witness Point."

The harrison monument was set over a stone found.
 A BCS record of June 26-27 states "Think I found from where one tree stood but had been set out of its place by road hands about two days before. S.W. Wiley placed rock at the corner."
 A BCS tie card August 15, 1868 states "no stone." A BCS tie card dated May 30, 1991 shows the corner as a rail found. A BCS tie card dated August 3, 2005 shows the corner as a harrison monument with no documentation of source.
 This corner was excavated on July 13, 2011. Prior to excavation a harrison monument was visible at the surface. Excavation revealed a section of vertical railroad rail found at 7 inches deep, below the harrison monument. Further excavation revealed a stone found at 11 inches deep. With 8 inches of the top of the stone exposed, it measures 8 inches E-W by 11 inches N-S and is clearly larger than this at deeper points, particularly in the N-S dimension. The stone is embedded in the clay layer below the road, with the top of the stone protruding approximately 2 inches out of the clay into the bottom of the road bed. The stone was accepted as the best available evidence of the corner. The top 6 inches of the stone were encased in concrete and the harrison monument was set over the top, high point of the stone. The previously existing harrison and railroad rail, both removed during excavation, had been 0.4 feet south and 1.6 feet west of the stone. While the 1968 tie card does not specify monumentation set, it is most likely that the rail was set in association with the creation of that tie card. Clearly, the statement "no stone" was erroneous.
 This corner was originally established as a wood post in June, 1822.



Kenneth E. Hedge
 Kenneth E. Hedge, County Surveyor

James S. Swift
 James S. Swift, IN LS 20200054
 March 1, 2012

Clinton Township

Section 2 T19N, R1E	Section 1 T19N, R1E
Section 11 T19N, R1E	Section 12 T19N, R1E

PHOTOGRAPHIC DOCUMENTATION

Date of photography: July 13, 2011

View of the stone from above and north.



View of the stone from above and west.



View from the east, showing the top of the stone and the old post on the west side of the road.



View from the south, looking across the stone and north along County Road 500 East.



For details and documentation, refer to related sheet "Section Corner Record."