

# SECTION CORNER RECORD

# SE 100-1100

## BOONE COUNTY SURVEYOR'S OFFICE

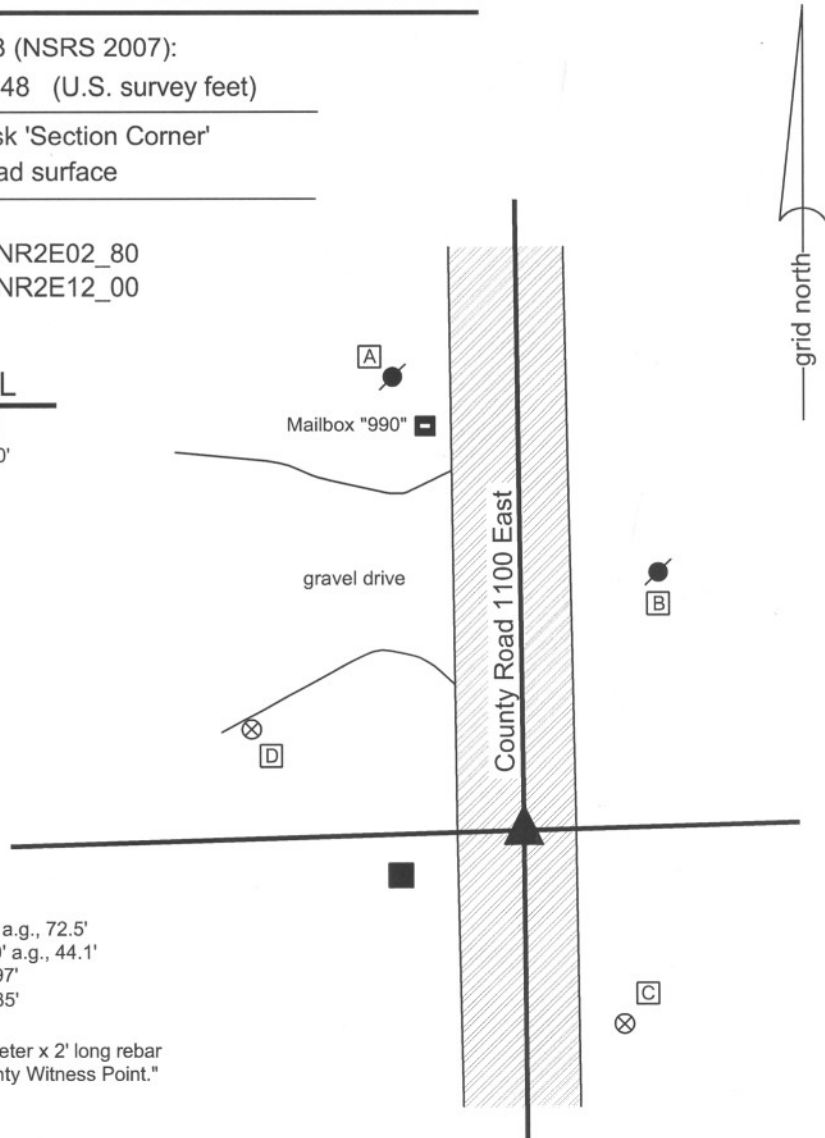
State Plane grid coordinates NAD83 (NSRS 2007):  
North: 1741780.88 East: 3183299.48 (U.S. survey feet)

Type of monument: Harrison, 4" disk 'Section Corner'  
Depth: One inch below adjacent road surface

Indiana tie card references:  
IN02\_T18NR2E01\_72 IN02\_T18NR2E02\_80  
IN02\_T18NR2E11\_08 IN02\_T18NR2E12\_00

### CORNER WITNESS DETAIL

SCALE 1" = 30'  
0' 15' 30'



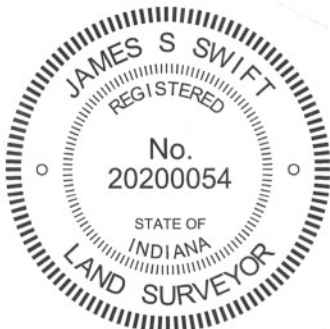
- A - Mag nail set in SE side power pole, 2.0 a.g., 72.5'
- B - Mag nail set in SW side power pole, 2.0' a.g., 44.1'
- C - Boone County witness mark, flush, 33.97'
- D - Boone County witness mark, flush, 45.35'

Boone County witness mark is a 3/8" diameter x 2' long rebar bearing a metal cap stamped "Boone County Witness Point."

The harrison monument was set over a stone found.

A BCS record of August 25, 1871 states "Reestablished Set a Rock 20.12 by 9 +." A BCS tie card dated May 31, 1991 shows the corner as a 5/8 inch rebar found. This corner was excavated on May 1, 2009. Prior to excavation a 5/8 inch rebar with a red plastic cap was found flush with the surface, in agreement with the 1991 distance ties. Excavation revealed the record stone found at 16 inches deep south and east of the rebar. With 13 inches of the stone exposed, the stone measures 12 inches E-W by 9 inches N-S. The etched "+" is clearly visible on the top of the stone. The stone is completely embedded in the clay layer below the road bed, with the top of the stone approximately at the top of the clay layer. The stone is split horizontally at 6 inches from the top. After measuring and documenting the stone, the top portion was reset on the bottom portion and packed back together with the surrounding clay. The entire stone was left in place. The harrison monument was set directly over the etched "+" on the stone, which point is 1.1 feet south and 3.5 feet east of the rebar (removed during excavation.)

This corner was originally established as a wood post in July, 1821.



*Kenneth E. Hedge*  
Kenneth E. Hedge, County Surveyor

*James S. Swift*  
James S. Swift, IN LS 20200054

July 14, 2010, Revised April 30, 2012

Union Township

Section 2 T18N, R2E	Section 1 T18N, R2E
Section 11 T18N, R2E	Section 12 T18N, R2E

PHOTOGRAPHIC DOCUMENTATION

Date of photography: May 1, 2009

View of the stone as first exposed.



View of the stone more fully exposed.  
View from above and south.



View from over the stone, looking north along  
County Road 1100 East.



Similar view to above with the etched mark  
on the top of the stone brushed clean.



View of the stone from above and west.



For details and documentation, refer to  
related sheet "Section Corner Record."

# SECTION CORNER RECORD

# SE 150-1000

## BOONE COUNTY SURVEYOR'S OFFICE

State Plane grid coordinates NAD83 (2011):

CORNER: North: 1738982.88 East: 3177930.92 (U.S. survey feet)

WITNESS: North: 1738983.43 East: 3177930.92 (U.S. survey feet)

CORNER: Wood corner post

WITNESS: 5/8 inch rebar with metal cap stamped 'Boone County Surveyor'

Indiana tie card references:

IN02\_T18NR2E11\_36 IN02\_T18NR2E12\_44

### CORNER WITNESS DETAIL

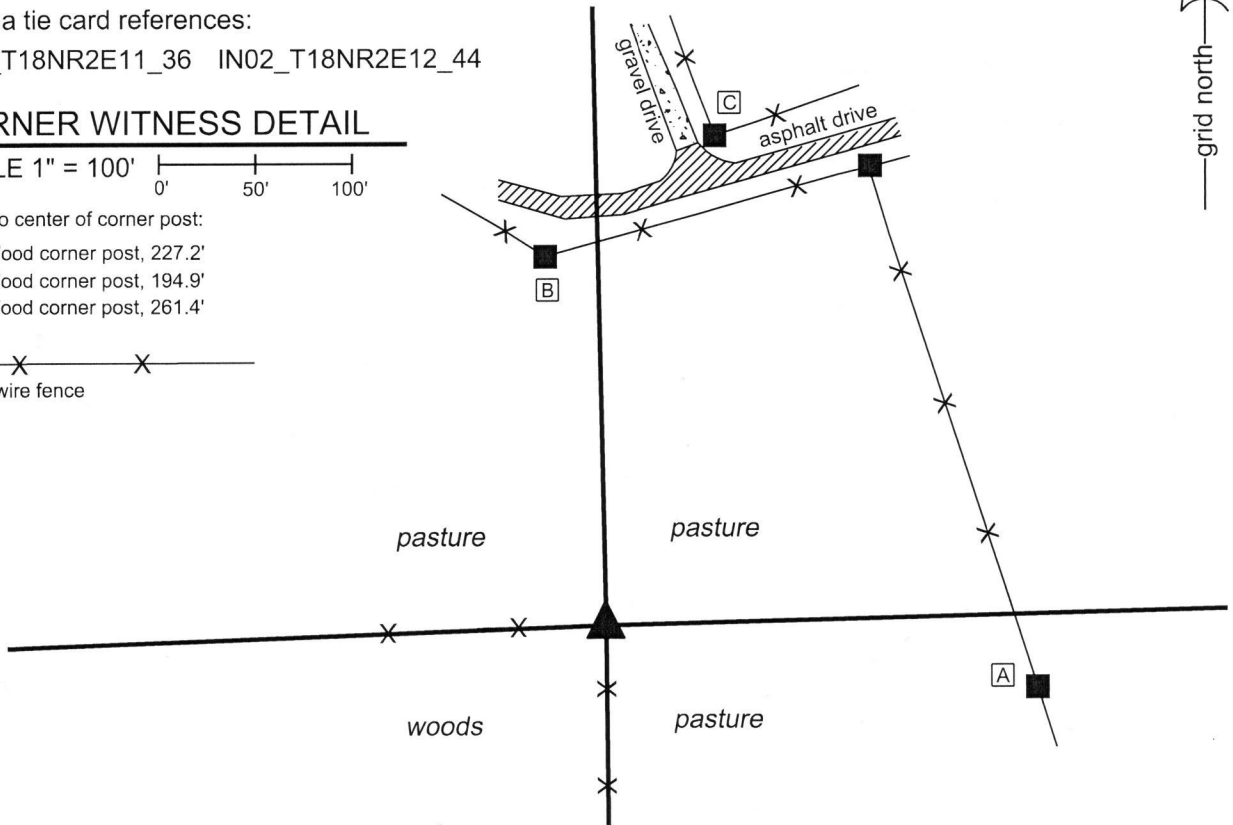
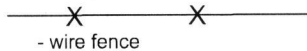
SCALE 1" = 100'

Ties to center of corner post:

A - Wood corner post, 227.2'

B - Wood corner post, 194.9'

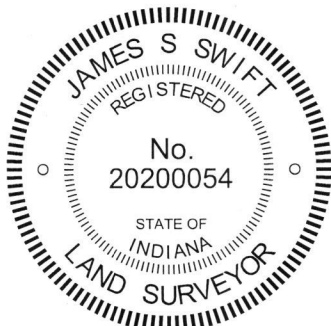
C - Wood corner post, 261.4'



The wood corner post was found in place and held as the corner. The rebar with Boone County Surveyor cap is intended as a witness to the corner. A BCS record of September 28 & October 14, 1891 states, with respect to this corner, "Found by intersecting the Section with the line from West through Sect. 10. Set rock marked + on top & 1/4 on S side 20.14.11 at corner." Neither recent BCS tie cards nor surveys recorded in the Office of the Boone County Recorder were found referencing the corner.

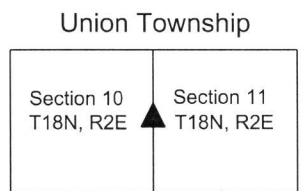
This corner was excavated on May 3, 2019. Prior to excavation, a wood corner post was found at the intersection of standing fences to the south and west. Existing wood braces were observed on the south and west sides of the post. Fencing was observed cut-off toward the north and the notch of a former brace was observed on the north side of the post. Gate hardware was observed on the east side of the post. The position of the post is between 5 and 15 feet east of a straight line connecting the corner to the south (see BCS Corner SE 200-1000) and various evidence of the corner to the north (BCS Corner SE 100-1000, not fully perpetuated). Manual excavation and probing around the post and along the fence to the west revealed no further evidence of the corner. No stones or other hard objects were found. The stone called in the 1891 record was not found. The post, clearly being the old corner post for fences in three cardinal directions and a gate in the other, was accepted as representing the best available evidence of the corner. The fencing to the south and west of the post appear to remain in use as a livestock enclosure. The post was left in place and a 30 inch length of 5/8 inch rebar was set, partially in concrete, 0.25 of a foot north of the north edge of the post. The rebar is capped with a metal cap stamped 'Boone County Surveyor.' The center of the post is held as the corner and the rebar is intended as a witness to the corner.

This corner was originally established in 1821.



Kenneth E. Hedge, County Surveyor

James S. Swift, IN LS 20200054  
June 26, 2019



# SECTION CORNER RECORD

# SE 150-1100

## BOONE COUNTY SURVEYOR'S OFFICE

State Plane grid coordinates NAD83 (NSRS 2007):  
North: 1739127.94 East: 3183324.60 (U.S. survey feet)

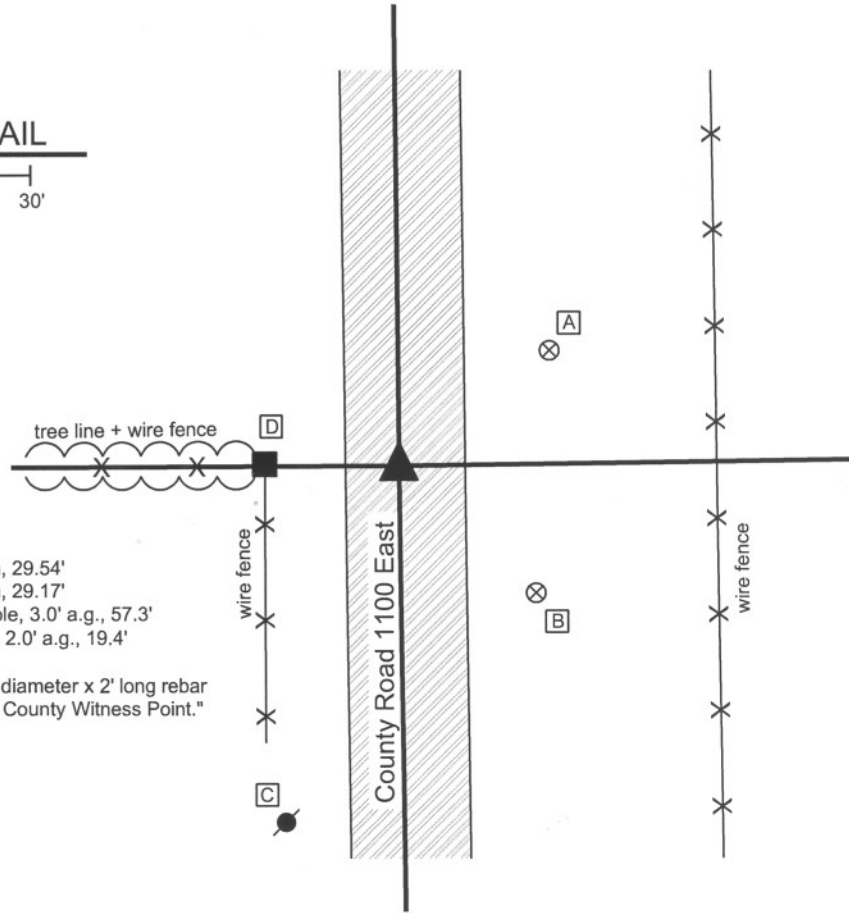
Type of monument: Harrison, 4" disk 'Section Corner'  
Depth: One inch below adjacent road surface

Indiana tie card references:  
IN02\_T18NR2E11\_36  
IN02\_T18NR2E12\_44



### CORNER WITNESS DETAIL

SCALE 1" = 30'  
0' 15' 30'



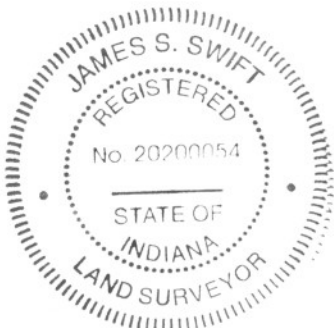
- A - Boone County witness mark, flush, 29.54'
- B - Boone County witness mark, flush, 29.17'
- C - Mag nail set in N.E. side power pole, 3.0' a.g., 57.3'
- D - Mag nail set in N. side wood post, 2.0' a.g., 19.4'

Boone County witness mark is a 3/8" diameter x 2' long rebar bearing a metal cap stamped "Boone County Witness Point."

The harrison monument was set over a stone found.

A BCS record of August 10, 1868 states "Re Established from stumps of both trees. Rock 16.13.12 in marked +." A BCS record of September 28 and October 14, 1891 states "Found rock of proper size but mark worn off by wagons remains of Elm to correspond with witness. Remarkd rock + and lowered it to level of road." A BCS tie card dated May 31, 1991 shows the corner as a road nail found. This corner was excavated on April 22, 2009. Prior to excavation a road nail was visible 2 inches deep in a hole in the asphalt. Excavation revealed the record stone found at 24 inches deep. The stone measures 13 inches N-S by 12 inches E-W by 16 inches tall. A vague but discernable etched "+" is on top of the stone. The mark is more discernable by feel than by sight. The harrison monument was set directly over the etched "+" on the stone. The road nail, removed during excavation, had been 0.3 foot north and 1.4 feet east of the stone.

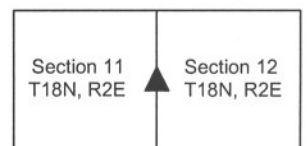
This corner was originally established as a wood post in July, 1821.



*Kenneth E. Hedge*  
Kenneth E. Hedge, County Surveyor

*James S. Swift*  
James S. Swift, IN LS 20200054  
July 14, 2010

Union Township



PHOTOGRAPHIC DOCUMENTATION

Date of photography: April 22, 2009

View of the stone as first exposed.



View of the stone from above and west.



View of the stone from above and east.



View of the stone and the wood end post on the east side of the road.



View of the stone from above, showing the etched mark barely visible on the top of the stone.



For details and documentation, refer to related sheet "Section Corner Record."

# SECTION CORNER RECORD

SE 200-1000

## BOONE COUNTY SURVEYOR'S OFFICE

State Plane grid coordinates NAD83 (NSRS 2007):

North: 1736356.30 East: 3177959.20 (U.S. survey feet)

Type of monument: Harrison, 4" disk 'Section Corner'

Depth: One inch below adjacent road surface

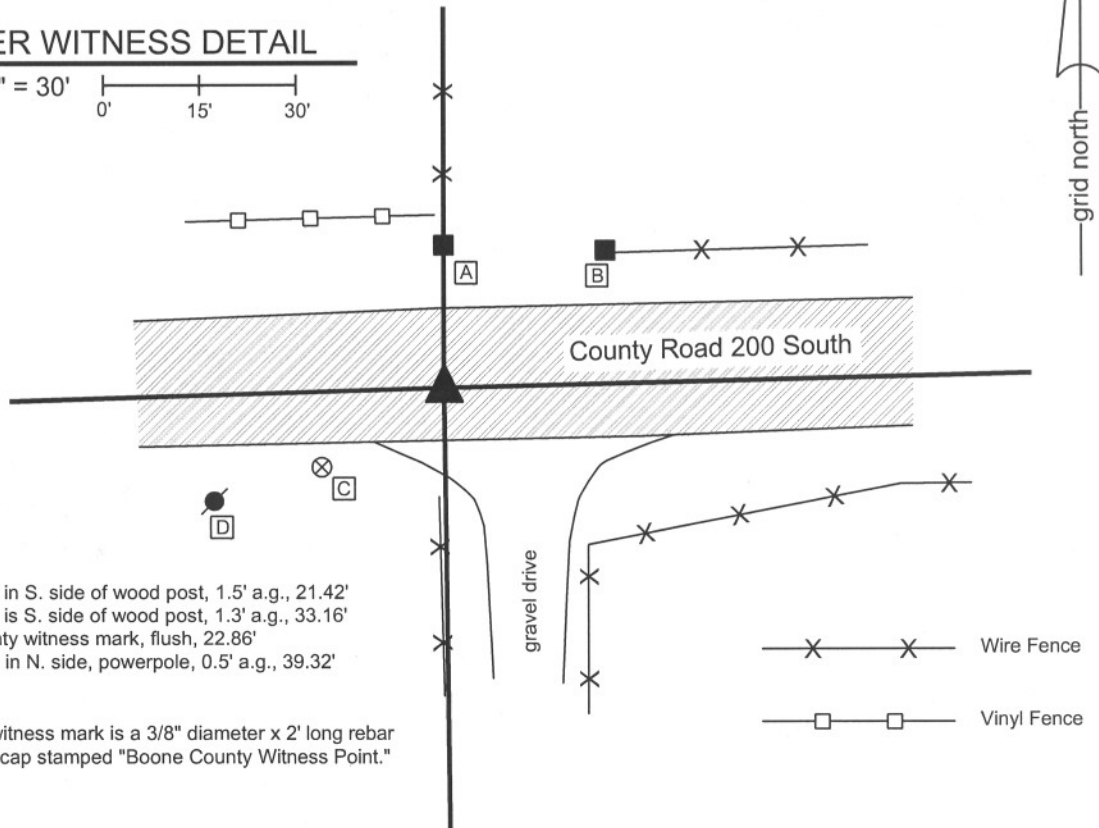
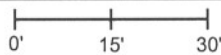
Indiana tie card references:

IN02\_T18NR2E10\_80 IN02\_T18NR2E11\_72

IN02\_T18NR2E14\_00 IN02\_T18NR2E15\_08

### CORNER WITNESS DETAIL

SCALE 1" = 30'



- A - Mag nail set in S. side of wood post, 1.5' a.g., 21.42'
- B - Mag nail set in S. side of wood post, 1.3' a.g., 33.16'
- C - Boone County witness mark, flush, 22.86'
- D - P.K. nail fnd in N. side, powerpole, 0.5' a.g., 39.32'

Boone County witness mark is a 3/8" diameter x 2' long rebar bearing a metal cap stamped "Boone County Witness Point."

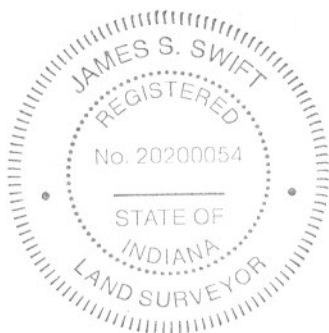
The harrison monument was set in the position of a railroad rail found.

A BCS record of April 20, 1883 states "Reestab. on line with e & f Sec 11, and D Sec 15 & q Sec. 11. Stone 20x16x16 marked + on top."

A BCS tie card of July 2, 1967 states "stone found." Prior to excavation the visible monument was a 5/8 inch rebar 6 inches deep in a hole in the asphalt. This rebar fit generally well with the 1967 ties. This corner was excavated on April 24, 2008. Excavation yielded a railroad rail at 12 inches.

The rebar was against the south side of the rail. Both monuments were removed. Further excavation yielded no more monuments. The stone was not found and it is considered most likely that the stone was removed and the rail installed in 1967. Although the no specific documentation was found for the rail, it is known that removal of the stone and installation of a railroad rail was a common practice of field crews from this office in that time frame.

The rail was replaced with a harrison monument. This corner was originally established as a wood post in July, 1821.



*Kenneth E. Hedge*  
 Kenneth E. Hedge, County Surveyor

*James S. Swift*  
 James S. Swift, IN LS 20200054

March 11, 2009

Union Township

Section 10 T18N, R2E	Section 11 T18N, R2E
Section 15 T18N, R2E	Section 14 T18N, R2E

# SECTION CORNER RECORD

# SE 200-1050

## BOONE COUNTY SURVEYOR'S OFFICE

State Plane grid coordinates NAD83 (NSRS 2007):  
North: 1736421.12 East: 3180659.91 (U.S. survey feet)

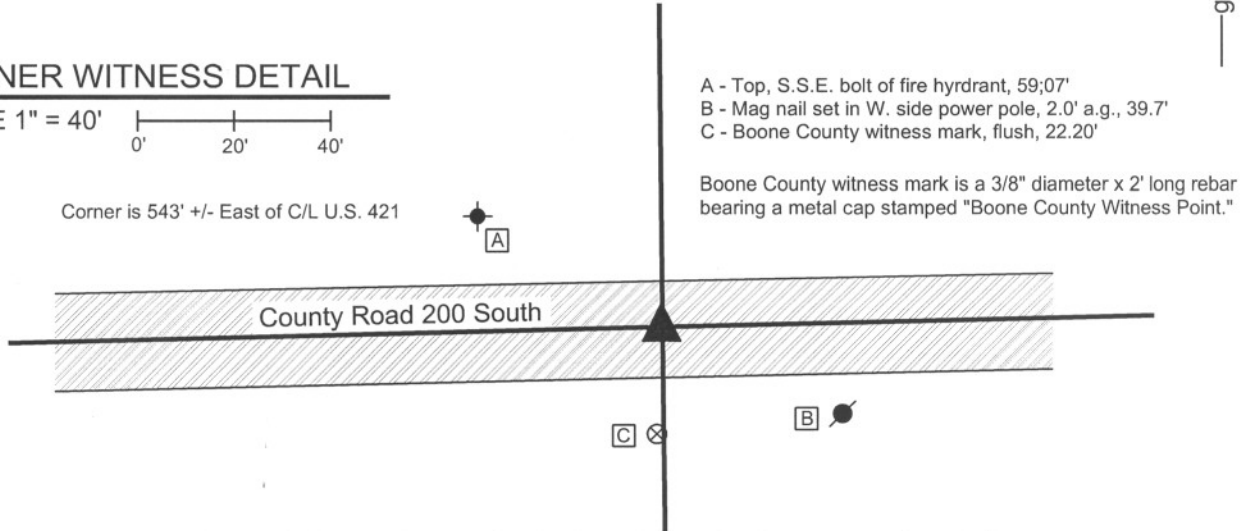
Type of monument: Harrison, 4" disk 'Section Corner'  
Depth: One inch below adjacent road surface

Indiana tie card references:  
IN02\_T18NR2E11\_76  
IN02\_T18NR2E14\_04



### CORNER WITNESS DETAIL

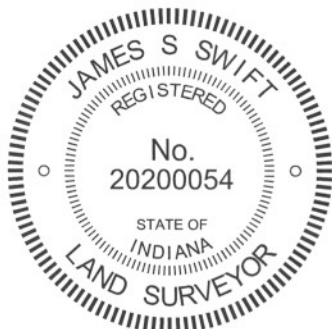
SCALE 1" = 40'  
0' 20' 40'



The harrison monument was set at the midpoint between the stones found at the northeast and northwest corners of section 14. This corner is not specifically mentioned in the old BCS Surveyor's Record beyond the original establishment of the corner by the federal government, in the notes for which the corner is shown as being set at the midpoint of the line between sections 11 and 14. A BCS record of 1854 shows the northeast corner of the northwest quarter of the northeast quarter of section 14 as being established on line and at one quarter of the distance from the northeast to the northwest corner of the section, directly implying that the north line of section 14 is straight and that the north quarter corner would be established at the midpoint. No evidence of occupation was found in the vicinity of the corner, nor is it believed that there has been such evidence for a long time, if ever, due to the presence of Michigan Road (U.S. 421) immediately to the west of the corner. A BCS tie card dated June 5, 1991 shows the corner as a railroad spike. It is believed that this is the same monument as that found 32.0 feet west and 7.3 feet north of the midpoint. The origin of this monument is not known. A railroad spike was also found along the straight line connecting the northeast and northwest corners of section 14 at a point 107.75 feet west of the midpoint.

Although evidence of evidence of occupation is not visible in the immediate vicinity of the corner, such evidence does exist in relevant remote locations. Fences to the north and south of County Road 200 East 1/4 mile east of the corner fit well with a position for that corner as being established on line and halfway between the stone at the northeast corner of section 14 and the calculated midpoint of the north line of section 14, in agreement with the 1854 record. Also, a line connecting the calculated midpoint of the north line of section 14 and the stone marking the south quarter corner of section 14 fits well with the fence marking evidence of possession along the east line of the southwest quarter of section 14. The post at the historically occupied and accepted center of section 14 falls approximately 2.5 feet west of this straight line. It is also noted that County Road 200 North is quite straight and that the approximate center of the road does not vary from the mile long section line. The above evidence is cited in support of holding the corner at the calculated midpoint of the north line of section 14. No evidence was found in support of holding the railroad spike shown on the 1991 tie card, other than the fact that it is shown on the card. It is considered that the preponderance of evidence clearly supports the midpoint as a more reasonable position for the corner than the railroad spike to the north and west.

No specific evidence of the corner was found in an area of excavation 6 feet E-W by 4 feet N-S, centered on the calculated midpoint of the north line of section 14. This is not considered surprising, given the lack of specific mention of the corner in the old BCS Surveyor's Record, the lack of evidence of occupation and the historical lack of occupation patterns due to the proximity of the old Michigan Road. The corner was established at the midpoint as mentioned above and a harrison monument was set at this location.



*Kenneth E. Hedge*  
Kenneth E. Hedge, County Surveyor

*James S. Swift*  
James S. Swift, IN LS 20200054  
July 25, 2011

Union Township

Section 11  
T18N, R2E

Section 14  
T18N, R2E

# SECTION CORNER RECORD

SE 200-1100

## BOONE COUNTY SURVEYOR'S OFFICE

State Plane grid coordinates NAD83 (NSRS 2007):  
North: 1736486.01 East: 3183360.60 (U.S. survey feet)

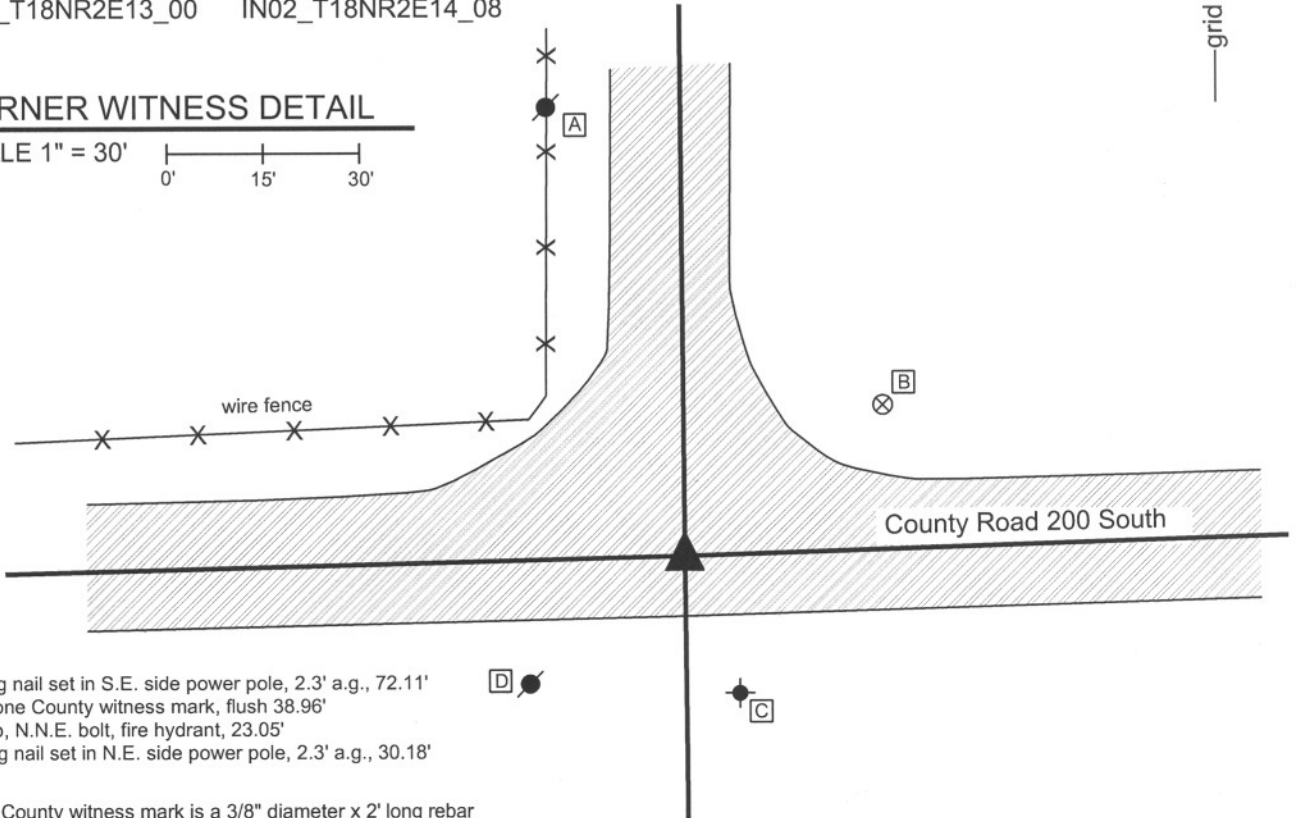
Type of monument: Harrison, 4" disk 'Section Corner'  
Depth: One inch below adjacent road surface

Indiana tie card references:  
IN02\_T18NR2E11\_80 IN02\_T18NR2E12\_72  
IN02\_T18NR2E13\_00 IN02\_T18NR2E14\_08



### CORNER WITNESS DETAIL

SCALE 1" = 30'  
0' 15' 30'



- A - Mag nail set in S.E. side power pole, 2.3' a.g., 72.11'
- B - Boone County witness mark, flush 38.96'
- C - Top, N.N.E. bolt, fire hydrant, 23.05'
- D - Mag nail set in N.E. side power pole, 2.3' a.g., 30.18'

Boone County witness mark is a 3/8" diameter x 2' long rebar bearing a metal cap stamped "Boone County Witness Point."

The harrison monument was set in place of a railroad rail found.  
 A BCS record of January 20, 1874 states "Re-established after sighting the lines intersecting here. Set a rock 17.13.10 +." A BCS tie card dated July 31, 1967 states "found stone." A BCS tie card dated May 31, 1991 shows the corner as being a 3/4 inch tie rod found.  
 This corner was excavated on May 30, 2008. Prior to excavation a railroad rail was visible approximately 4 inches deep in a hole in the asphalt. Excavation centered on the railroad rail yielded an iron pipe (presumably the 3/4 inch tie rod called for the 1991 tie card) situated against the rail on the east side. Further excavation yielded no monuments. Though no specific documentation was found indicating the source of the rail, It is reasonable to conclude that the stone was removed and the rail installed in 1967, as was a common practice at that time. The harrison monument was set in the place of the now removed railroad rail.  
 This corner was originally established as a wood post in July, 1821.



*Kenneth E. Hedge*  
Kenneth E. Hedge, County Surveyor

*James S. Swift*  
James S. Swift, IN LS 20200054

March 11, 2009

Union Township

Section 11 T18N, R2E	Section 12 T18N, R2E
Section 14 T18N, R2E	Section 13 T18N, R2E