

SECTION CORNER RECORD

SE 100-400

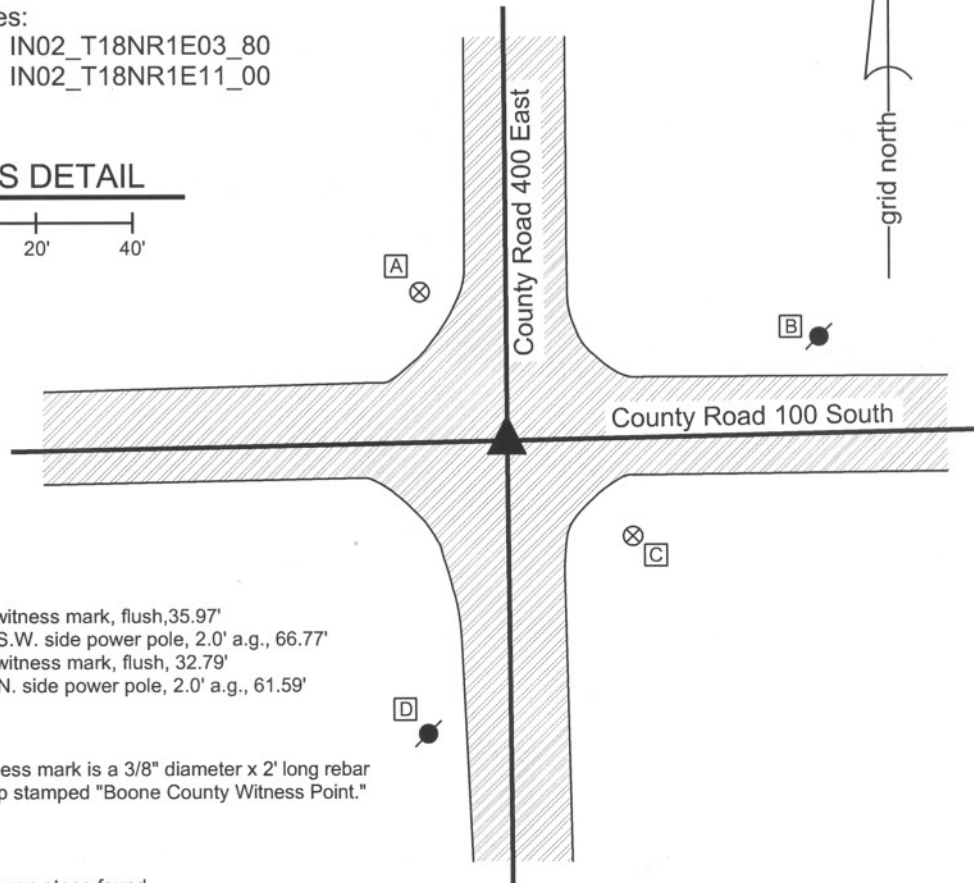
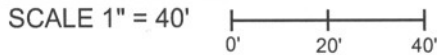
BOONE COUNTY SURVEYOR'S OFFICE

State Plane grid coordinates NAD83 (NSRS 2007):
 North: 1740865.64 East: 3145800.70 (U.S. survey feet)

Type of monument: Harrison, 4" disk 'Section Corner'
 Depth: One inch below adjacent road surface

Indiana tie card references:
 IN02_T18NR1E02_72 IN02_T18NR1E03_80
 IN02_T18NR1E10_08 IN02_T18NR1E11_00

CORNER WITNESS DETAIL



- A - Boone County witness mark, flush, 35.97'
- B - Mag nail set in S.W. side power pole, 2.0' a.g., 66.77'
- C - Boone County witness mark, flush, 32.79'
- D - Mag nail set in N. side power pole, 2.0' a.g., 61.59'

Boone County witness mark is a 3/8" diameter x 2' long rebar bearing a metal cap stamped "Boone County Witness Point."

The Harrison monument was set over a stone found. A BCS Record of August 16, 1869 refers to this corner and the corner one-half mile west as "Stones that were set." It is believed that this terminology was intended to mean that the stone were found and appeared to be monuments intentionally set in the past. A BCS record of November 1, 1912 refers to the corners as "Found rock set." A BCS tie card dated August 16, 1967 states "no stone" and demonstrates a location for the corner but does not state what monument was set. A BCS tie card dated October 15, 2005 shows the corner as a Harrison monument with no documentation of source. This corner was excavated on August 11, 2009. Prior to excavation a Harrison monument was visible at the surface. Excavation revealed a railroad rail at 9 inches deep, directly below the Harrison monument. Although not documented as such, it is likely that the railroad rail was set on August 16, 1967. Further excavation revealed a wood stake found at 8 inches deep, south and west of the Harrison and railroad rail. A stone was found at 21 inches deep, directly below the wood stake. The stone is embedded in the clay layer below the road, with approximately 2 inches protruding out the clay and into the base layer of the road. With 8 inches exposed, the stone measures 12 inches N-S by 10 inches E-W and remained entirely stable, indicating that it extends further into the clay layer. No specific markings were found on the stone. The Harrison monument was set over the top, center of the stone. The previous Harrison and railroad rail, both of which were removed during excavation, had been 3.4 feet north and 0.9 feet east. This corner was originally established as a wood post in June, 1820.



Kenneth E. Hedge
 Kenneth E. Hedge, County Surveyor

James S. Swift
 James S. Swift, IN LS 20200054
 July 14, 2010

Center Twp	Worth Twp
Section 3 T18N, R1E	Section 2 T18N, R1E
Section 10 T18N, R1E	Section 11 T18N, R1E

PHOTOGRAPHIC DOCUMENTATION

Date of photography: August 11, 2009

View of the stone as first exposed.



View of the stone more fully exposed.



View from the east, looking across the stone and west along County Road 100 South.



View from the north, looking across the stone and south along County Road 400 East.



For details and documentation, refer to related sheet "Section Corner Record."

SECTION CORNER RECORD

SE 100-450

BOONE COUNTY SURVEYOR'S OFFICE

State Plane grid coordinates NAD83 (NSRS 2007):

North: 1740921.62 East: 3148440.82 (U.S. survey feet)

Type of monument: Harrison, 4" disk 'Section Corner'

Depth: One inch below adjacent road surface

Indiana tie card references:

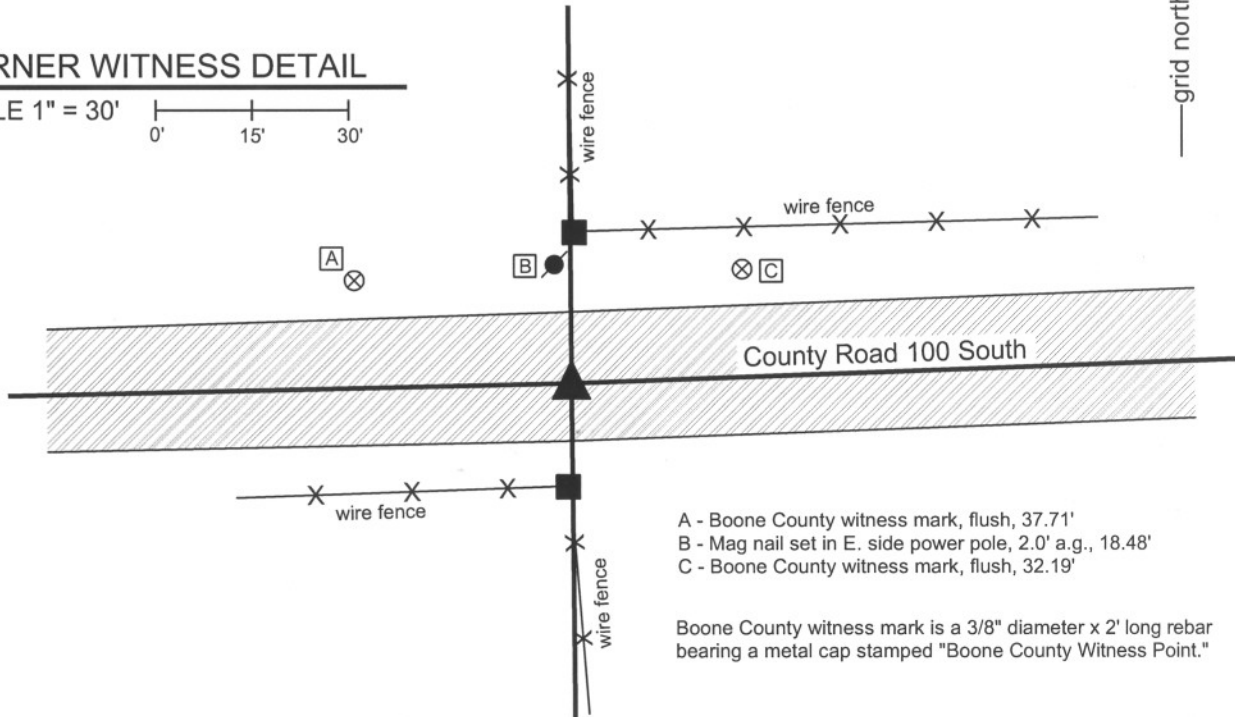
IN02_T18NR1E02_76

IN02_T18NR1E11_04



CORNER WITNESS DETAIL

SCALE 1" = 30'



- A - Boone County witness mark, flush, 37.71'
- B - Mag nail set in E. side power pole, 2.0' a.g., 18.48'
- C - Boone County witness mark, flush, 32.19'

Boone County witness mark is a 3/8" diameter x 2' long rebar bearing a metal cap stamped "Boone County Witness Point."

The harrison monument was set in place of a railroad rail found.

A BCS record of April 6, 1869 states "Disputed. Therefore chopped into Oak found mark. Set two Rocks. One 4,5,3 marked +. Top one 20.16.3 marked +." A BCS tie card dated October 8, 1971 states "Stone found. RRR put in." A BCS tie card dated October 15, 2005 shows the corner as a harrison monument with no documentation of source.

This corner was excavated on June 29, 2009. Prior to excavation, a harrison monument was visible at the surface, leaning slightly and clearly disturbed. Excavation revealed a railroad rail at 9 inches deep. The rail was leaning slightly to the east. The harrison monument had been approximately 4 inches north and 3 inches west of the top of the rail. Due to the leaning characteristic of the rail, the E-W position of the harrison appeared to fit with the approximate bottom of the rail but the harrison was clearly north of the original position of the rail. No other evidence was found. Although the 1971 tie card does not specifically state it, it is most likely that the stone was removed at the time the railroad rail was set. It is noted that the 2005 tie card demonstrates a similar tie distance as shown on the 1971 tie card to a post south of the corner. However, it was observed that the existing post appears to be newer than the posts to the south and west. No nail or other markings which appeared to be from the 1971 time frame were found in the post. It is believed that the post shown on the 2005 tie card is not the same as that shown on the 1971 tie card. No documentation was found explaining why the harrison was set at a position which is not in accordance with the rail. The new harrison monument was set in place of the rail, 4 inches south of the previously existing harrison.

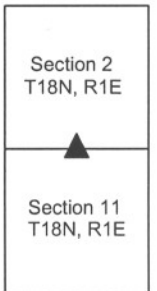
This corner was originally established as a wood post in June, 1820.



Kenneth E. Hedge
Kenneth E. Hedge, County Surveyor

James S. Swift
James S. Swift, IN LS 20200054
July 14, 2010

Worth Twp



SECTION CORNER RECORD

SE 100-500

BOONE COUNTY SURVEYOR'S OFFICE

State Plane grid coordinates NAD83 (NSRS 2007):

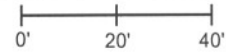
North: 1741013.35 East: 3151069.19 (U.S. survey feet)

Type of monument: Harrison, 4" disk 'Section Corner'

Depth: One inch below adjacent road surface

CORNER WITNESS DETAIL

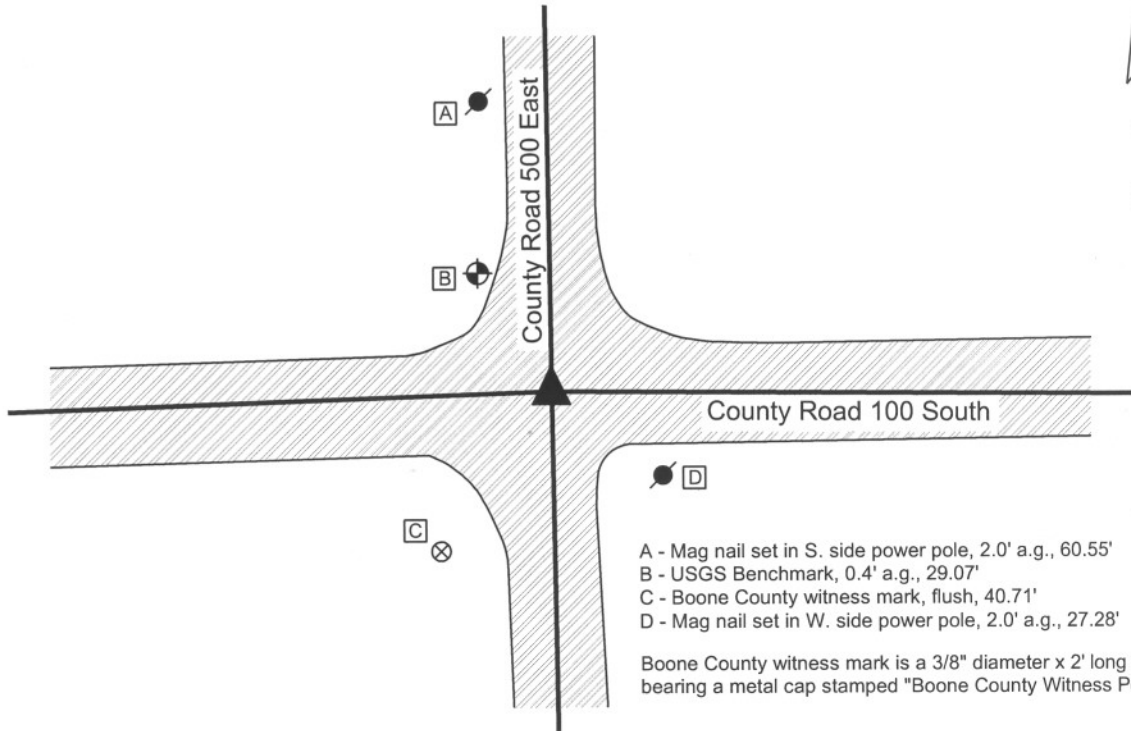
SCALE 1" = 40'



Indiana tie card references:

IN02_T18NR1E01_72 IN02_T18NR1E02_80

IN02_T18NR1E11_08 IN02_T18NR1E12_00



- A - Mag nail set in S. side power pole, 2.0' a.g., 60.55'
- B - USGS Benchmark, 0.4' a.g., 29.07'
- C - Boone County witness mark, flush, 40.71'
- D - Mag nail set in W. side power pole, 2.0' a.g., 27.28'

Boone County witness mark is a 3/8" diameter x 2' long rebar bearing a metal cap stamped "Boone County Witness Point."

The harrison monument was set over a stone found.

A BCS record of April 6, 1869 states "Placed the Rock deeper 27,20,8 in ground." A BCS tie card dated August 16, 1967 states "no stone" and shows a position for the corner but does not document the monument set. A BCS tie card dated October 25, 2005 shows the corner as a harrison monument with no documentation of source.

This corner was excavated on July 16, 2009. Prior to excavation a harrison monument was visible at the surface. Excavation revealed a railroad rail found at 10 inches deep, approximately 2 inches SW of the position of the harrison monument. Although the record does not specify the monument, it is likely that the railroad rail was set on August 16, 1967. Further excavation revealed a stone found at 15 inches deep, north of the harrison and rail. The stone is clearly vertical, embedded in the clay layer below the road with 3 inches of the stone protruding out of the clay into the base layer of the road. With 12 inches of the stone exposed the stone measures 7 inches E-W by 16 inches N-S and appeared to be larger lower. Based on experience excavating similar monuments, it is reasonable to conclude that this is the record stone described in the 1869 record and that the E-W and N-S dimensions near the base of the stone will match the record dimensions of 8 inches and 20 inches, respectively. No specific markings were observed, nor were any noted in the record. The stone was left in place and the harrison monument was set over the top center point of the stone, 1.7 feet north and 0.2 feet east of the previous harrison.

This corner was originally established as a wood post in June, 1820.



Kenneth E. Hedge
 Kenneth E. Hedge, County Surveyor

James S. Swift
 James S. Swift, IN LS 20200054
 July 14 2010

Worth Township

Section 2 T18N, R1E	Section 1 T18N, R1E
Section 11 T18N, R1E	Section 12 T18N, R1E

PHOTOGRAPHIC DOCUMENTATION

Date of photography: July 16, 2009

View of the stone from above and west.



View of the stone from above and south.



View from the west, looking across the stone and west along County Road 100 South.



View from the south, looking across the stone and north along County Road 500 East.



For details and documentation, refer to related sheet "Section Corner Record."

SECTION CORNER RECORD

SE 150-400

BOONE COUNTY SURVEYOR'S OFFICE

State Plane grid coordinates NAD83 (NSRS 2007):

North: 1738208.11 East: 3145826.04 (U.S. survey feet)

Type of monument: Harrison, 4" disk 'Section Corner'

Depth: One inch below adjacent road surface

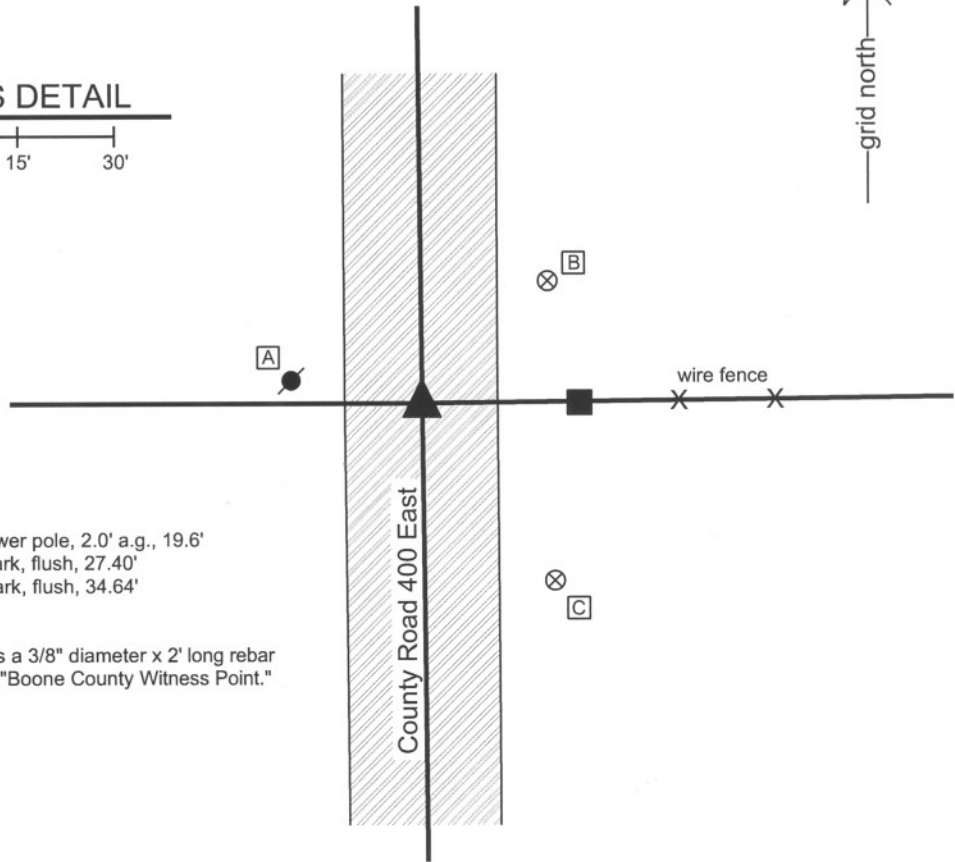
Indiana tie card references:

IN02_T18NR1E10_44

IN02_T18NR1E11_36

CORNER WITNESS DETAIL

SCALE 1" = 30'



- A - Mag nail set in E. side power pole, 2.0' a.g., 19.6'
- B - Boone County witness mark, flush, 27.40'
- C - Boone County witness mark, flush, 34.64'

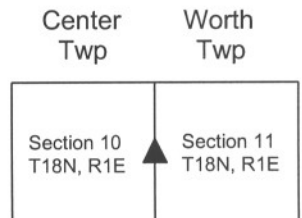
Boone County witness mark is a 3/8" diameter x 2' long rebar bearing a metal cap stamped "Boone County Witness Point."

The harrison monument was set in place of a harrison monument found and a railroad rail found. A BCS record of February 14, 1910 states "found rock." A BCS tie card dated October, 1975 states "Found stone - set rail." A BCS tie card dated August 4, 2005 shows the corner as a harrison monument with no documentation of source. Prior to excavation a harrison monument was found one inch below the adjacent asphalt. Excavation revealed a railroad rail on end 10 inches deep directly below the harrison. No other evidence was found. The 1975 record does not specifically state that the stone was removed and the rail was set in its place, but it is known that this was a procedure of BCS field crews from that period. The lack of the stone indicates that the rail was set in its place. Both the harrison monument and railroad rail were removed during excavation and a new harrison monument was set in their place. This corner was originally established as a wood post in June, 1820.



Kenneth E. Hedge
 Kenneth E. Hedge, County Surveyor

James S. Swift
 James S. Swift, IN LS 20200054
 July 14, 2010



SECTION CORNER RECORD

BOONE COUNTY SURVEYOR'S OFFICE

SE 150-500

State Plane grid coordinates NAD83 (NSRS 2007):

North: 1738356.333 East: 3151110.231 (U.S. survey feet)

Type of monument: Harrison, 4" disk 'Section Corner'

Depth: One inch below adjacent road surface

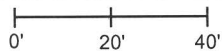
Indiana tie card references:

IN02_T18NR1E11_44

IN02_T18NR1E12_36

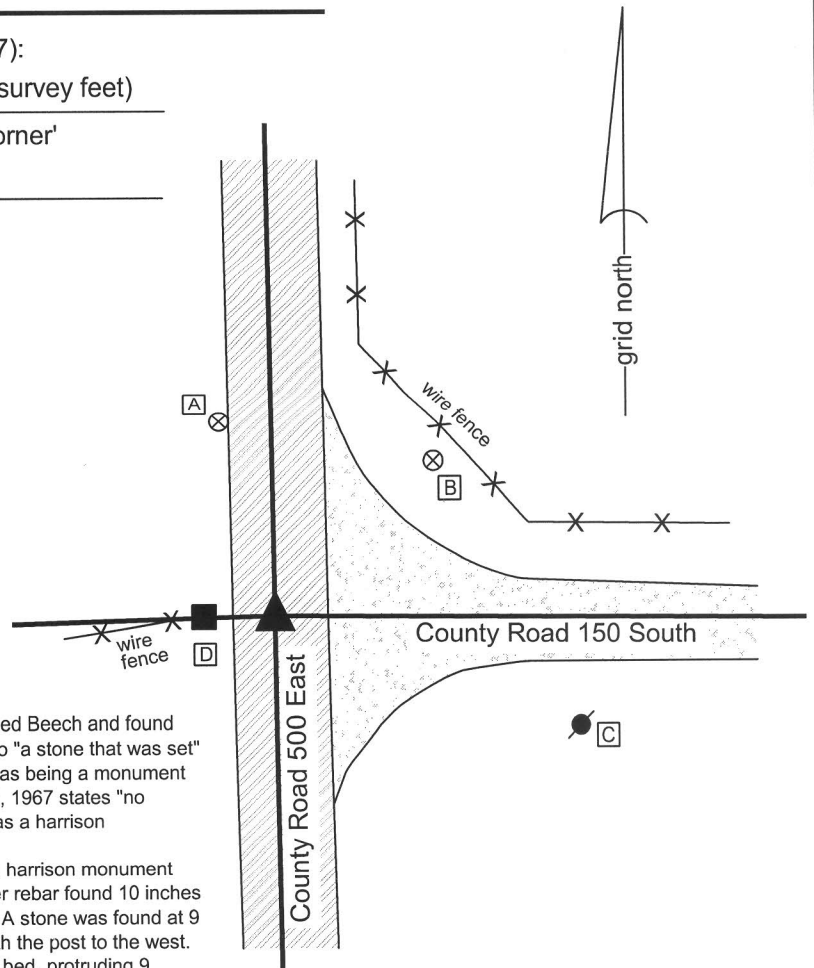
CORNER WITNESS DETAIL

SCALE 1" = 40'



- A - Boone County witness mark, flush, 41.53'
- B - Boone County witness mark, flush, 45.70'
- C - Mag nail set in N.W. side power pole, 2.0' a.g., 66.0'
- D - Mag nail set in N. side wood post, 0.7' a.g., 13.4'

Boone County witness mark is a 3/8" diameter x 2' long rebar bearing a metal cap stamped "Boone County Witness Point."



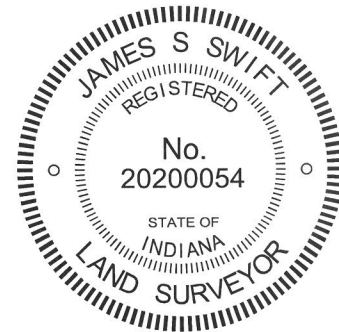
The harrison monument was set over a stone found.

A BCS record of April 6, 1869 states "A stone that was set. Chopped Beech and found mark to satisfy some who doubted." It is noted that the reference to "a stone that was set" is interpreted to mean that the stone was found and was accepted as being a monument intentionally set in the past. A BCS tie card dated August 22, 1967 states "no stone." A BCS tie card dated October 25, 2005 shows the corner as a harrison monument with no documentation of source.

This corner was excavated on July 16, 2009. Prior to excavation a harrison monument was visible at the surface. Excavation revealed a 5/8 inch diameter rebar found 10 inches deep, against a railroad rail at 13 inches, both below the harrison. A stone was found at 9 inches deep, north and east of the rebar. The stone was in line with the post to the west. The stone was partially embedded in the clay layer below the road bed, protruding 9 inches into the bottom of the road bed. It was oriented slightly off cardinal directions and measured 17 inches in the approximate N-S dimension, 4 inches in the approximate E-W dimension and was 14 inches tall. The stone was removed and another stone was found below, slightly to the east. The upper stone was situated along the southwest edge of the lower stone. The lower stone was found at 15 inches deep, well embedded in the clay layer, protruding approximately 3 inches into the road bed. This stone was 14 inches N-S by 14 inches E-W by 10 inches tall. No specific markings were found. The characteristics of this stone, stable in the clay but not vertical and bearing no particular markings, fit well with other stones which were found (i.e. "stone that was set") by County Surveyors in the mid to late 1800s but which were presumably set earlier. A notable feature of the record is the reference to "Chopped Beech and found mark to satisfy some who doubted." In conjunction with the "stone that was set" reference, this is understood to mean that the surveyor in 1869 found the stone and was able to prove that it was in the proper location by means of a distance tie to an original bearing tree.

The harrison monument was set over the approximate top center of the lower stone. The upper stone, rebar, railroad rail and previous harrison monument were all removed during excavation. The harrison monument set is 2.0 feet north and 0.1 foot west of the position of the previous harrison, rebar and railroad rail.

This corner was originally established as a wood post in June, 1820.

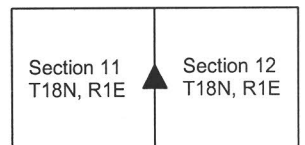


Kenneth E. Hedge
Kenneth E. Hedge, County Surveyor

James S. Swift
James S. Swift, IN LS 20200054

July 14, 2010, Revised March 7, 2013

Worth Township



PHOTOGRAPHIC DOCUMENTATION

Date of photography: July 16, 2009

The first stone found with the rebar and railroad rail.



The second, lower stone as found.



View from the south, looking across the lower stone and north along County Road 500 East.



All four found monuments. The rebar, rail and lower stone are undisturbed. The upper stone is reset in the approximate position as found.



The lower stone from above and south. The upper stone is lying on the adjacent asphalt.



For details and documentation, refer to related sheet "Section Corner Record."

SECTION CORNER RECORD

SE 200-400

BOONE COUNTY SURVEYOR'S OFFICE

State Plane grid coordinates NAD83 (NSRS 2007):
North: 1735548.72 East: 3145851.54 (U.S. survey feet)

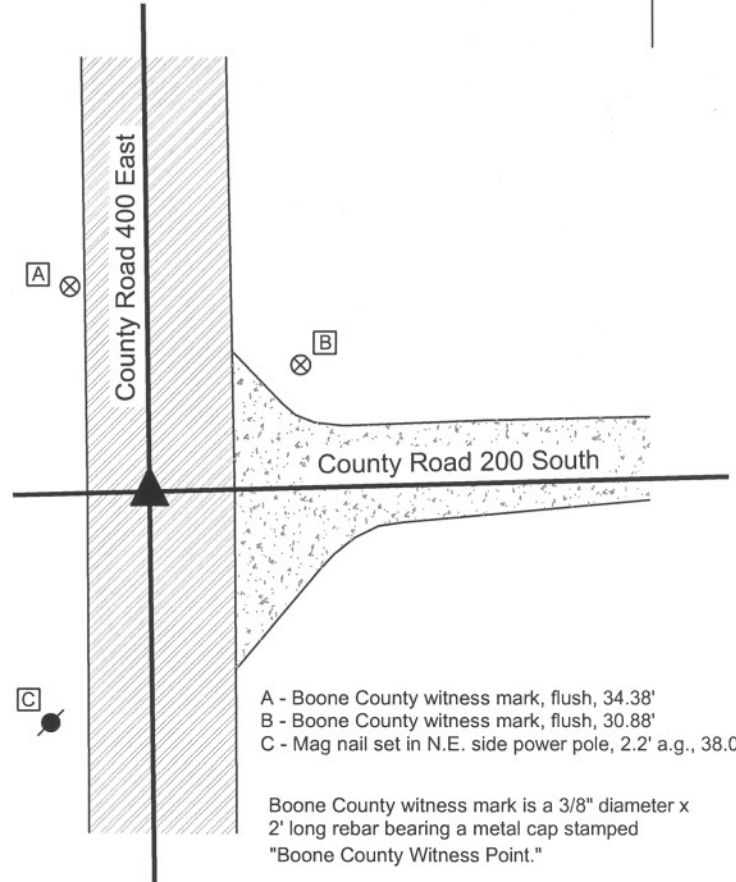
Type of monument: Harrison, 4" disk 'Section Corner'
Depth: One inch below adjacent road surface

Indiana tie card references:
IN02_T18NR1E10_80 IN02_T18NR1E11_72
IN02_T18NR1E14_00 IN02_T18NR1E15_08

CORNER WITNESS DETAIL

SCALE 1" = 30'
0' 15' 30'

The harrison monument was set in the position of a harrison monument found above a railroad rail.
A BCS record of September 21, 1868 states "Reestablished from stump of Oak. Set stake." A BCS record of March 24-25, 1913 states "Set rock 7x14x16 +". A BCS tie card dated November, 1970 states "no stone" and shows an "R" at the position of the corner, likely indicating a railroad rail. A BCS tie card dated October 21, 2005 calls for a harrison monument with no documentation of source.
This corner was excavated on June 10, 2008. Prior to excavation the harrison monument was visible 1 inch below the surrounding road surface. The rail was found at 8 inches deep, below the harrison. A stone was found at 9 inches deep, east of the rail. The stone measures approximately the record dimensions of 7x14x16, though no specific markings were discernable. The stone was found lying horizontally (as opposed to the typical vertical position of stones set by county surveyors in that era) at the top of the clay layer, within the gravel base of the road. The stone was not embedded in the clay. It appeared that the stone may have been disturbed in its position, presumably by a road grader. Minimal certainty could be attached to the situation of the stone with respect to depth, stability and markings. While the 1970 record was erroneous in the statement "no stone" it was observed that the rail had been placed essentially along the west side of the stone. The rail was as close to the stone as the stone may have been to its original position. Given the uncertainties with respect to the stone and the general acceptance of the rail as the corner, the rail was held as marking the corner and the harrison was set in the position of the rail and previous harrison. The stone was removed.
This corner was originally established as a wood post in June, 1820.



- A - Boone County witness mark, flush, 34.38'
- B - Boone County witness mark, flush, 30.88'
- C - Mag nail set in N.E. side power pole, 2.2' a.g., 38.00'

Boone County witness mark is a 3/8" diameter x 2' long rebar bearing a metal cap stamped "Boone County Witness Point."



Kenneth E. Hedge
Kenneth E. Hedge, County Surveyor

James S. Swift
James S. Swift, IN LS 20200054

March 11, 2009

Center Twp	Worth Twp
Section 10 T18N, R1E	Section 11 T18N, R1E
Section 15 T18N, R1E	Section 14 T18N, R1E

SECTION CORNER RECORD

SE 200-450

BOONE COUNTY SURVEYOR'S OFFICE

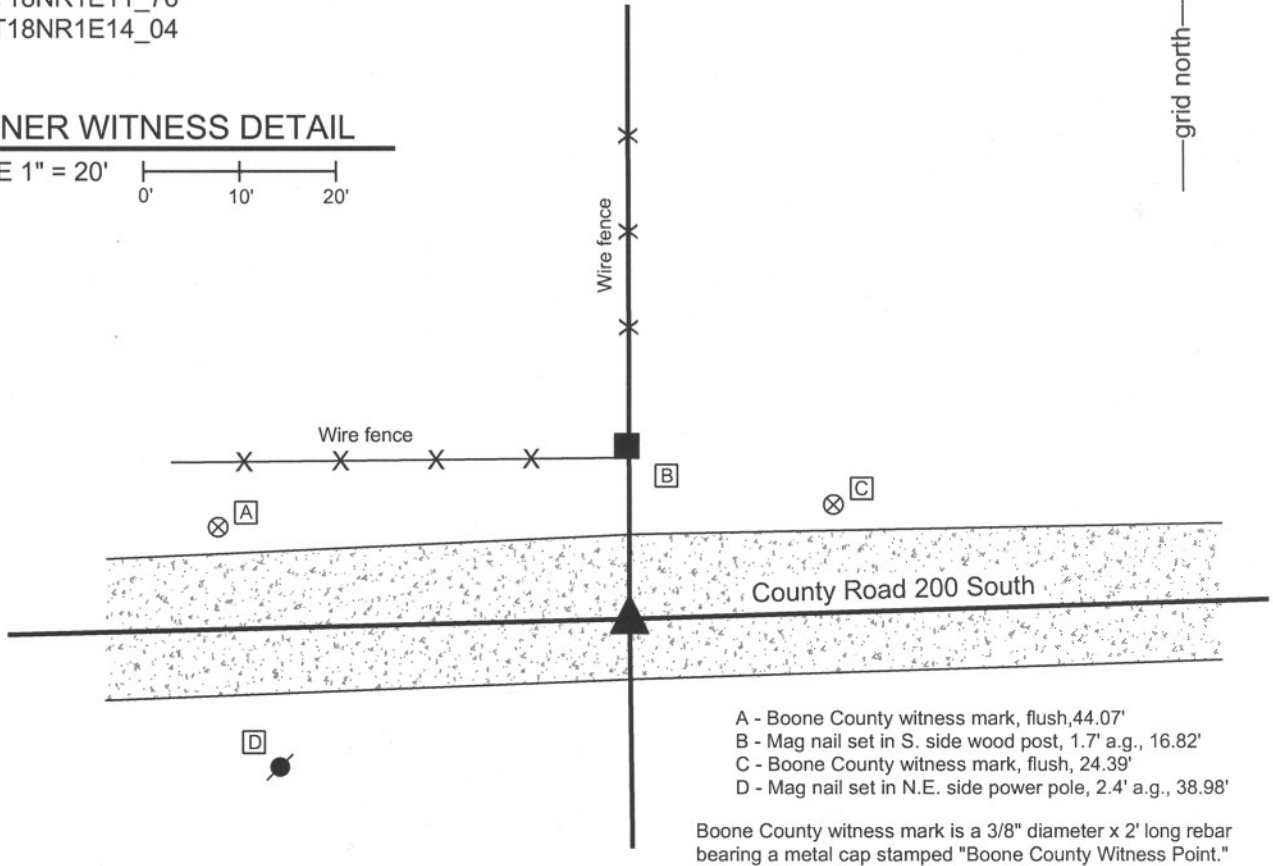
State Plane grid coordinates NAD83 (NSRS 2007):
North: 1735615.68 East: 3148499.20 (U.S. survey feet)

Type of monument: Harrison, 4" disk 'Section Corner'
Depth: four inches below adjacent road surface

Indiana tie card references:
IN02_T18NR1E11_76
IN02_T18NR1E14_04

CORNER WITNESS DETAIL

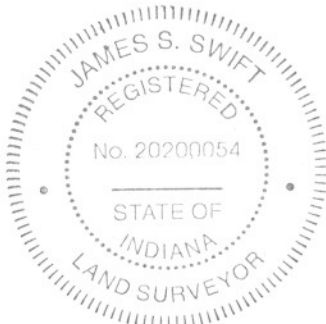
SCALE 1" = 20'
0' 10' 20'



- A - Boone County witness mark, flush, 44.07'
- B - Mag nail set in S. side wood post, 1.7' a.g., 16.82'
- C - Boone County witness mark, flush, 24.39'
- D - Mag nail set in N.E. side power pole, 2.4' a.g., 38.98'

Boone County witness mark is a 3/8" diameter x 2' long rebar bearing a metal cap stamped "Boone County Witness Point."

The harrison monument was set over a stone found. A BCS record of April 18, 1899 states "Reestablished, Rock 11x9x13 +. Top rock 8x10x16 +." A BCS tie card of November 1970 states "No stone - set rail." A BCS tie card of November 2, 2005 calls for a steel rail. This corner was excavated on June 10, 2008. Prior to excavation, the steel rail was known to exist at 3 inches deep in the gravel road. Excavation revealed the record lower stone at 15 inches deep, completely embedded in the clay. The stone has a "+" etched on the top and measures 11 inches NE-SW by 9 inches NW-SE. The top 11 inches of the stone were exposed and encased in concrete within a 12 inch diameter smooth core plastic storm pipe set vertically over the stone. The harrison monument was set within the same pipe, directly over the "+" on the stone, 8 inches below the surface of the gravel road. The rail (removed during excavation) had been driven along the northwest edge of the stone. The top of the rail was 0.6 foot north and 0.4 foot west of the "+" on the stone. This corner was originally established as a wood post in June, 1820.

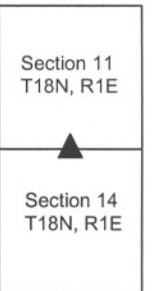


Kenneth E. Hedge
Kenneth E. Hedge, County Surveyor

James S. Swift
James S. Swift, IN LS 20200054

March 11, 2009

Worth Twp



PHOTOGRAPHIC DOCUMENTATION

Date of photography: June 10, 2008

Corner stone - overhead view from North



Same picture as to left with etched "+" on stone enhanced for visual detection.



Overhead view from West.



View from South looking over stone to wood corner post.



For details and documentation, refer to related sheet "Section Corner Record."

SECTION CORNER RECORD

BOONE COUNTY SURVEYOR'S OFFICE

SE 200-500

State Plane grid coordinates NAD83 (NSRS 2007):
 North: 1735696.96 East: 3151149.53 (U.S. survey feet)

Type of monument: Harrison, 4" disk 'Section Corner'
 Depth: One inch below adjacent road surface

Indiana tie card references:
 IN02_T18NR1E11_80 IN02_T18NR1E12_76
 IN02_T18NR1E14_08 IN02_T18NR1E13_00

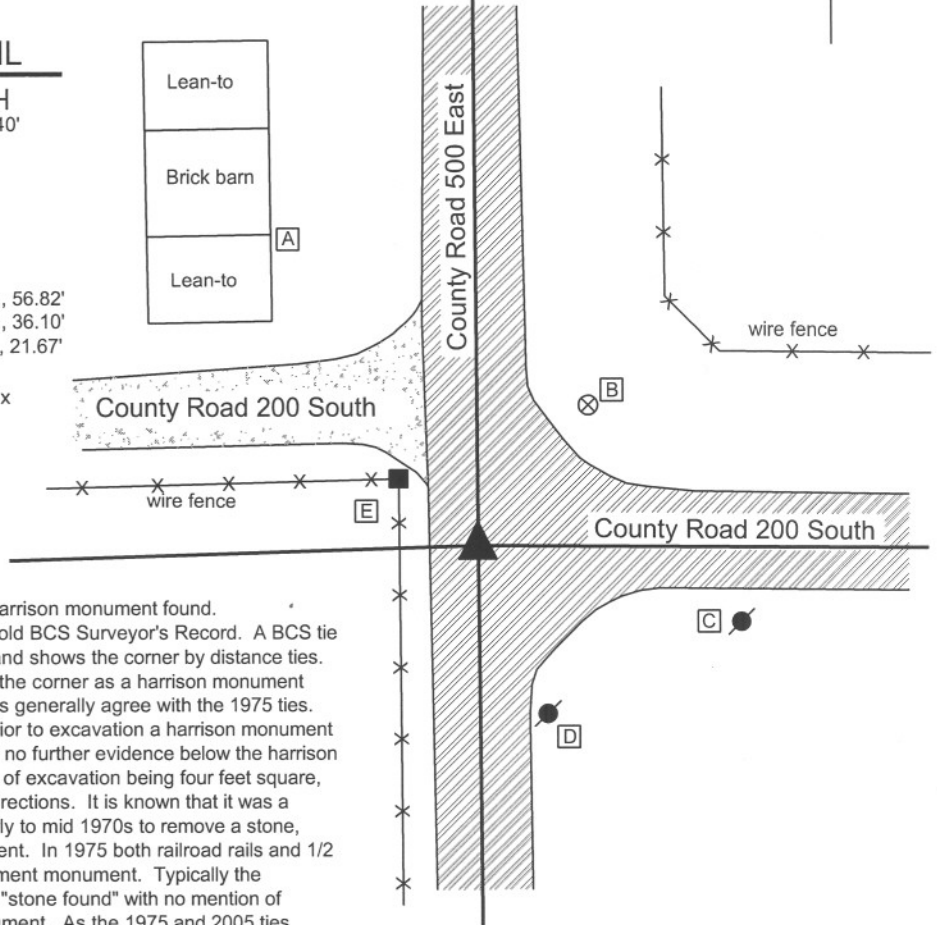


CORNER WITNESS DETAIL

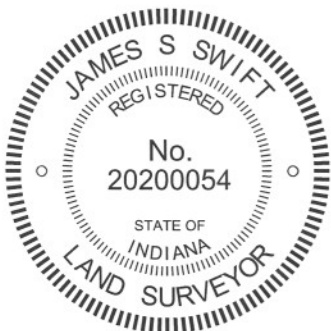
SCALE 1" = 40'

- A - S.E. corner, brick portion of barn, 78.00'
- B - Boone County witness mark, flush 37.15'
- C - Mag nail set in N. side power pole, 2.0' a.g., 56.82'
- D - Mag nail set in N. side power pole, 2.0' a.g., 36.10'
- E - Mag nail set in E. side power pole, 1.8' a.g., 21.67'

Boone County witness mark is a 3/8" diameter x 2' long rebar bearing a metal cap stamped "Boone County Witness Point."



The harrison monument was set in place of a harrison monument found. This corner is not specifically mentioned in the old BCS Surveyor's Record. A BCS tie card dated August, 1975 states "stone found" and shows the corner by distance ties. A BCS tie card dated October 15, 2005 shows the corner as a harrison monument with no documentation of source. The 2005 ties generally agree with the 1975 ties. This corner was excavated on July 9, 2008. Prior to excavation a harrison monument was found at the surface. Excavation revealed no further evidence below the harrison monument, nor any further evidence in an area of excavation being four feet square, centered on the harrison, oriented in cardinal directions. It is known that it was a common practice for BCS field crews in the early to mid 1970s to remove a stone, when found and replace it with a metal monument. In 1975 both railroad rails and 1/2 inch diameter rebars were used as the replacement monument. Typically the documentation for such an event simply states "stone found" with no mention of removing the stone or establishing a new monument. As the 1975 and 2005 ties generally agree, it is assumed that the harrison monument was set in place of a monument which was set in place of the stone, which was removed. The previous harrison was replaced with a new harrison monument at the same position. This corner was originally established as a wood post in 1820.



Kenneth E. Hedge
 Kenneth E. Hedge, County Surveyor

James S. Swift
 James S. Swift, IN LS 20200054
 March 11, 2009, revised March, 2012

Worth Twp

Section 11 T18N, R1E	Section 12 T18N, R1E
Section 14 T18N, R1E	Section 13 T18N, R1E