

SECTION CORNER RECORD

SW 700-750

BOONE COUNTY SURVEYOR'S OFFICE

State Plane grid coordinates NAD83 (2011):

North: 1708179.83 East: 3085407.90 (U.S. survey feet)

Type of monument: Harrison, 4" disk 'Section Corner'

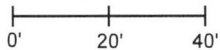
Depth: One inch below adjacent road surface

Indiana tie card references:

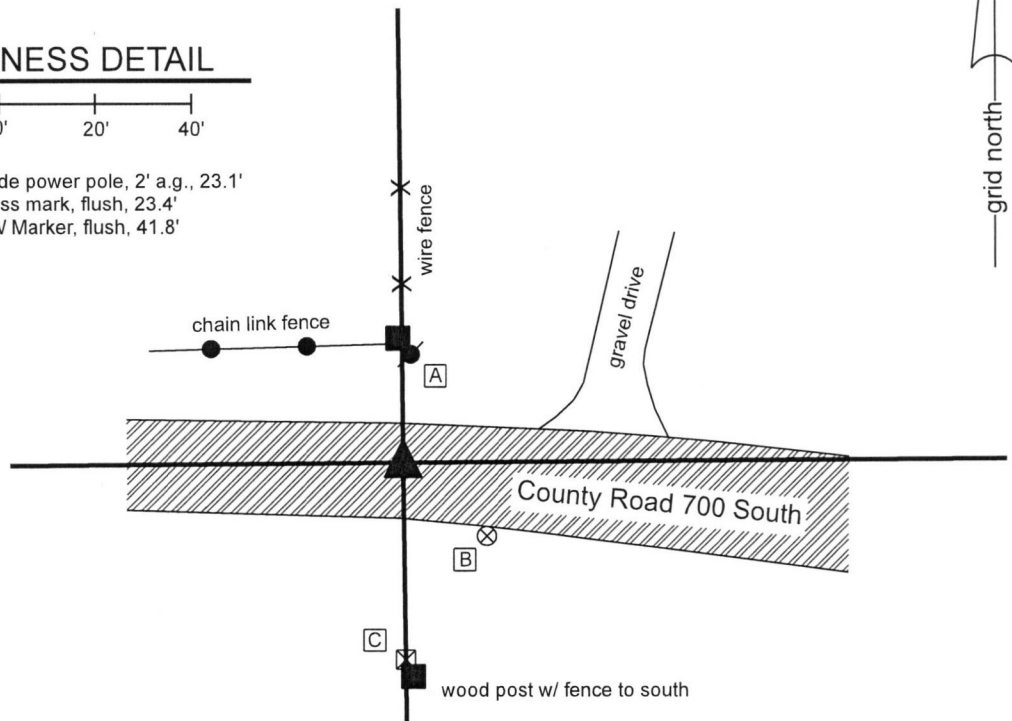
IN02_T17NR2W02_76 IN02_T17NR2W11_04

CORNER WITNESS DETAIL

SCALE 1" = 40'



- A - Mag Nail set in S. side power pole, 2' a.g., 23.1'
- B - Boone County witness mark, flush, 23.4'
- C - N. edge, INDOT RW Marker, flush, 41.8'

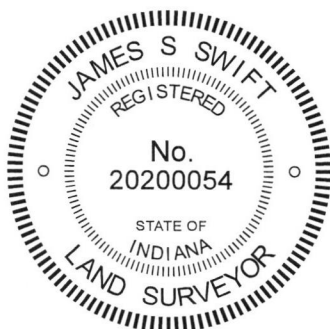


The Harrison monument was set in place of a railroad spike found.

A BCS record dated June 16-17, 1892 refers to this corner as a "rock that was set." No recent BCS tie cards were found referencing this corner.

Excavation was performed at this corner on September 12, 2018. Prior to excavation, a railroad spike was found at 3 inches deep in a hole in the asphalt, in-line with a fence to the north and the center of the road to the west. Excavation of an area extending 3 feet north, 3.5 feet east, 2 feet south and 2.5 feet west of the spike revealed no further evidence of the corner. The bottom of the road bed was found at 13 inches deep. Excavation was performed to a minimum of 15 inches. The railroad spike fits well with local evidence in the form of being in line with the old fence to the north and the center of the road to the west. The spike was slightly west of a newer fence to the south. The position of the spike fits well with proximate corners and is believed to have been held as marking the corner for numerous surveys in the area. The spike was accepted as marking the corner and was replaced with a Harrison monument in the same position.

This corner was originally established as a wood post in 1820.




Kenneth E. Hedge, County Surveyor


James S. Swift, IN LS 20200054

October 1, 2018

Jackson
Township

Section 2
T17N, R2W

Section 11
T17N, R2W

SECTION CORNER RECORD

SW 700-800

BOONE COUNTY SURVEYOR'S OFFICE

State Plane grid coordinates NAD83 (2011):

North: 1708157.94 East: 3082753.550 (U.S. survey feet)

Type of monument: Harrison, 4" disk 'Section Corner'

Depth: One inch below adjacent road surface

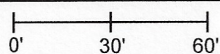
Indiana tie card references:

IN02_T18NR2W36_80 IN02_T18NR1W31_72

IN02_T18NR2W36_08 IN02_T18NR1W31_00

CORNER WITNESS DETAIL

SCALE 1" = 60'

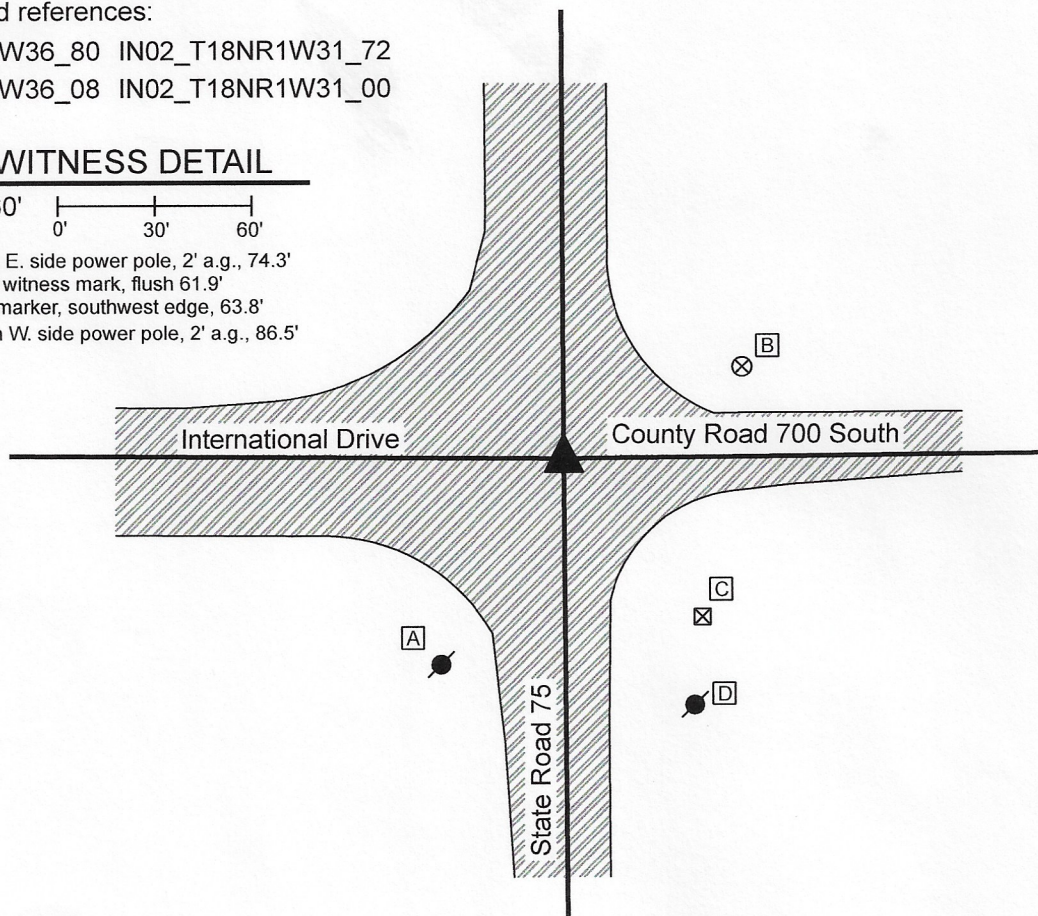


A - Mag nail set in E. side power pole, 2' a.g., 74.3'

B - Boone County witness mark, flush 61.9'

C - INDOT ROW marker, southwest edge, 63.8'

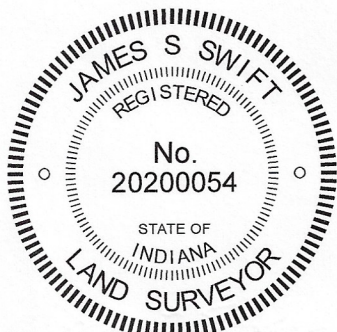
D - Mag nail set in W. side power pole, 2' a.g., 86.5'



The INDOT Type B monument was found in place and held as marking the corner.

A BCS record of February 23-25, 1858 states, with respect to this corner, "Reest. from old wit trees. Rock 11x14." A BCS tie card dated July 1, 1982 shows the corner as a P.K. Nail. A BCS tie card dated December, 2003 shows the corner as a Type "C" Monument. Common distance ties indicate that the monument found in 2003 was in the same, or nearly the same, position as the P.K. nail shown on the 1982 tie card. No excavation was performed at this corner as it falls in a state highway. The Type B monument found is believed to be the same monument as is referenced on the 2003 tie card. This position is known to have been held as marking the corner for many years and fits with local evidence, being at the intersection of the roads. The Type B monument was held as marking the corner.

This corner was originally established as a wood post in 1820.



Kenneth E. Hedge
Kenneth E. Hedge, County Surveyor

James S. Swift
James S. Swift, IN LS 20200054
July 21, 2020

Jackson Township

Section 3 T17N, R2W	Section 2 T17N, R2W
Section 10 T17N, R2W	Section 11 T17N, R2W

SECTION CORNER RECORD

SW 750-700

BOONE COUNTY SURVEYOR'S OFFICE

State Plane grid coordinates NAD83 (2011):

North: 1705548.96 East: 3088105.01 (U.S. survey feet)

Type of monument: Harrison, 4" disk 'Section Corner'

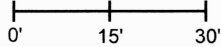
Depth: Three inches above surrounding ground

Indiana tie card references:

IN02_T17NR2W11_44 IN02_T17NR2W12_36

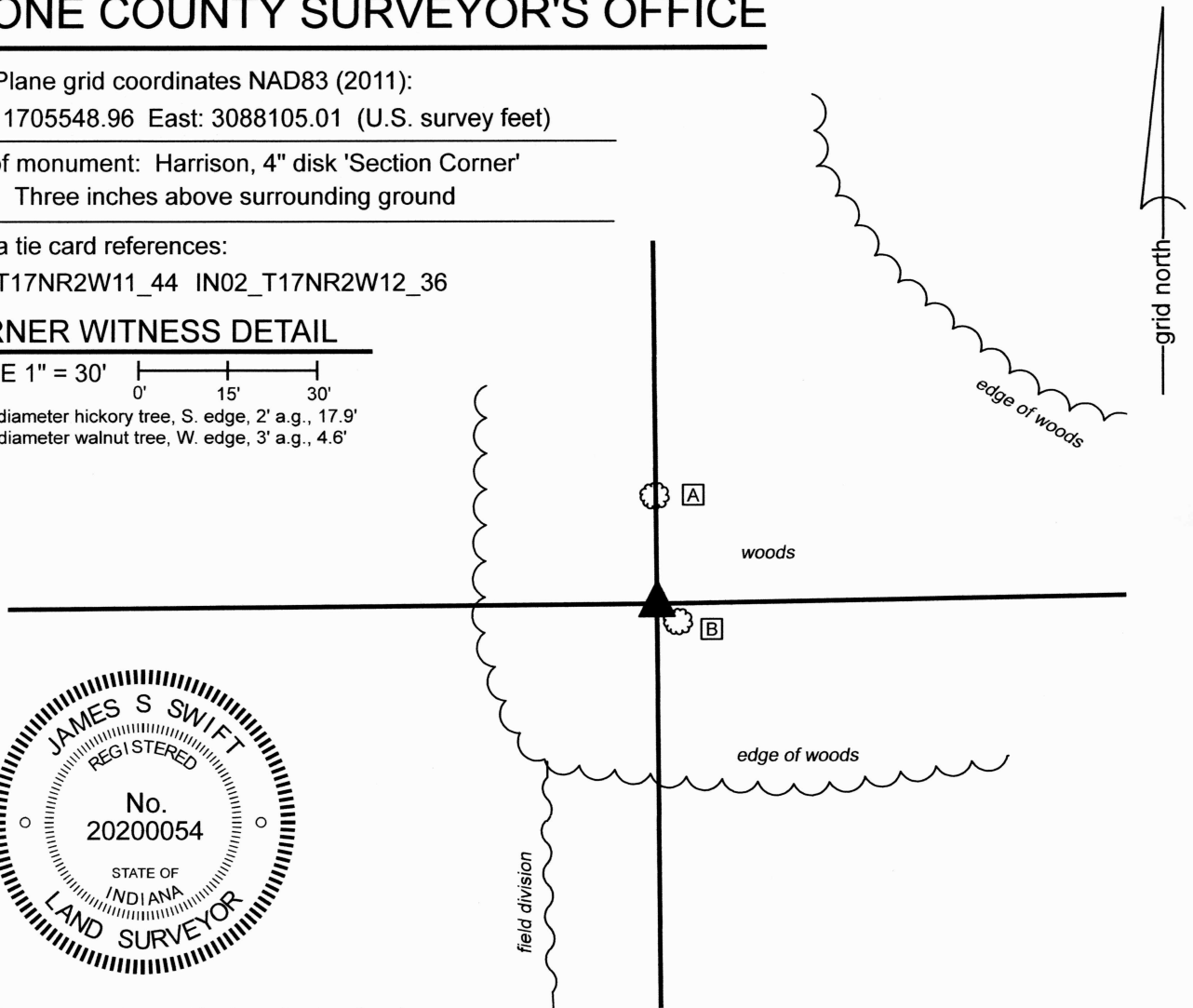
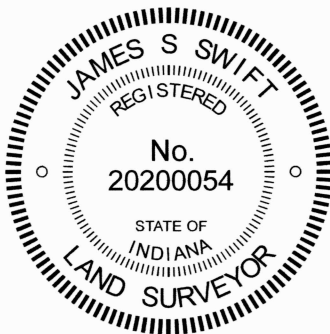
CORNER WITNESS DETAIL

SCALE 1" = 30'



A - 14" diameter hickory tree, S. edge, 2' a.g., 17.9'

B - 24" diameter walnut tree, W. edge, 3' a.g., 4.6'



The Harrison monument was set in place of a stone found.

A BCS Record dated November 10, 1871 states, with respect to this corner, "Set Rock. 14.12.7 marked +."

No recent BCS tie cards were found referencing this corner, nor were any surveys recorded in the Office of the Boone County Recorder found referencing the corner.

This corner was excavated and monumented on February 14, 2024. The stone which is called for in the 1871 record was found clearly visible in the immediate vicinity of the point where the westerly prolongation of a standing fence to the east intersects the southerly prolongation of a standing fence to the north. The stone, as found, was only partially embedded in the ground, but was evidently undisturbed and clearly oriented in cardinal directions with the '+' mark on the top, slightly north of the high point of the stone. As found, the stone measured 14 inches north-south by 12 inches east-west by 7 to 8 inches thick. The east edge of the stone was flat, vertical, and oriented precisely north and south. The stone was found 0.6 feet west and 2.9 feet north of the computed intersection of the prolongations of the standing fence to the north and east. Being so lightly embedded in the ground, the possibility that the stone had been moved from its original position was considered. Given that the stone was oriented in cardinal directions with the mark on top, it appeared that the rock had been purposely placed in this position. No corner post was observed. A pile of dirt, trees and general rubble immediately to the east and northeast of the stone is noted as evidence that this area has been cleared, but the found stone was situated beyond the limits of the general rubble and was sufficiently tucked amidst large trees to have been missed during the evident mechanized disruption of the general area of the corner. It is also noted that this rubble appears to have been pushed into its current location from the northeast. Excavation at the precise position where the fences would intersect, if they were still standing at the corner, revealed several small rocks, none of which match the description of the corner stone in the 1871 record.

The stone was accepted as being the monument called for in the 1871 record and was held as marking the corner. The stone was replaced with a Harrison monument which was set in the position of the top, high point of the stone, slightly south of the "+" mark. It is noted that numerous roots, some rather large, were encountered below the rock, which may account for why it was so lightly embedded in the ground, possibly having been pushed up by the roots, displaced in the vertical dimension.

Carol Cunningham, County Surveyor

James S. Swift, IN LS 20200054

Jackson Township

Section 11
T17N, R2W

Section 12
T17N, R2W

February 21, 2024

SECTION CORNER RECORD

SW 750-800

BOONE COUNTY SURVEYOR'S OFFICE

State Plane grid coordinates NAD83 (2011):

North: 1705506.53 East: 3082778.95 (U.S. survey feet)

Type of monument: plug in monument box, INDOT Type B

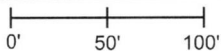
Depth: Flush with adjacent gravel driveway.

Indiana tie card references:

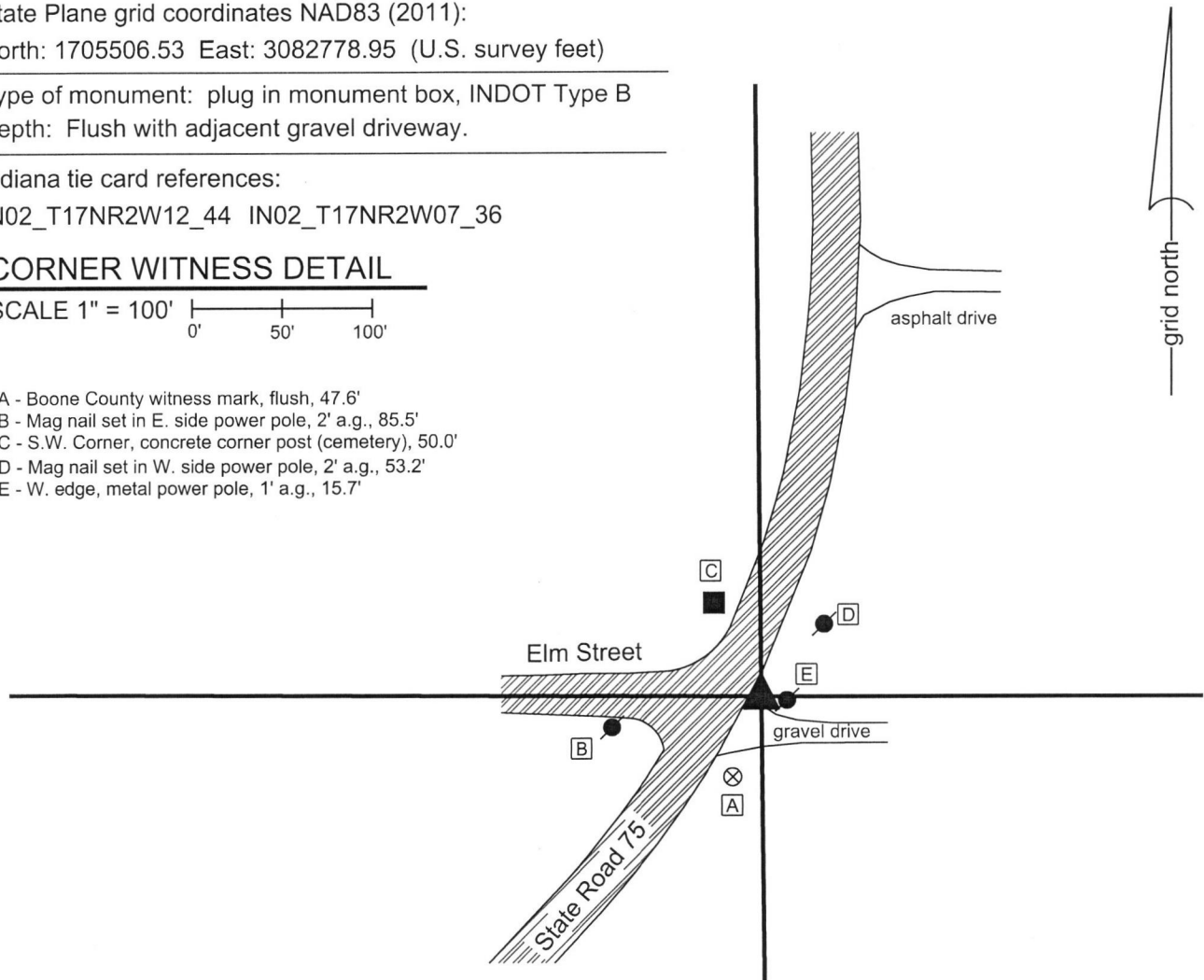
IN02_T17NR2W12_44 IN02_T17NR2W07_36

CORNER WITNESS DETAIL

SCALE 1" = 100'

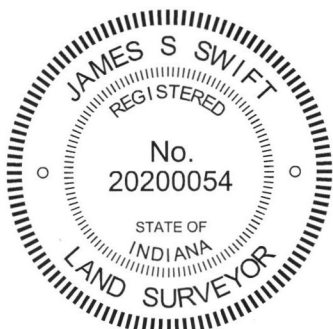


- A - Boone County witness mark, flush, 47.6'
- B - Mag nail set in E. side power pole, 2' a.g., 85.5'
- C - S.W. Corner, concrete corner post (cemetery), 50.0'
- D - Mag nail set in W. side power pole, 2' a.g., 53.2'
- E - W. edge, metal power pole, 1' a.g., 15.7'



The Type B monument was found in place and accepted as marking the corner.

A BCS tie card dated December, 2003 shows the corner as a railroad spike. This monument was subsequently removed by INDOT and replaced by a Type B monument. The monument is in an area of fill, in-line with the southerly prolongation of the center of State Road 75 from the north and in-line with the easterly prolongation of the center of Elm Street from the west. No excavation was performed at this corner and the Type B monument is accepted as marking the corner.




Kenneth E. Hedge, County Surveyor


James S. Swift, IN LS 20200054
July 31, 2019

Jackson Township

Section 12 T18N, R2W	Section 7 T17N, R2W
-------------------------	------------------------

SECTION CORNER RECORD

SW 750-800

BOONE COUNTY SURVEYOR'S OFFICE

State Plane grid coordinates NAD83 (2011):

North: 1705506.53 East: 3082778.95 (U.S. survey feet)

Type of monument: plug in monument box, INDOT Type B

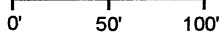
Depth: Flush with adjacent gravel driveway.

Indiana tie card references:

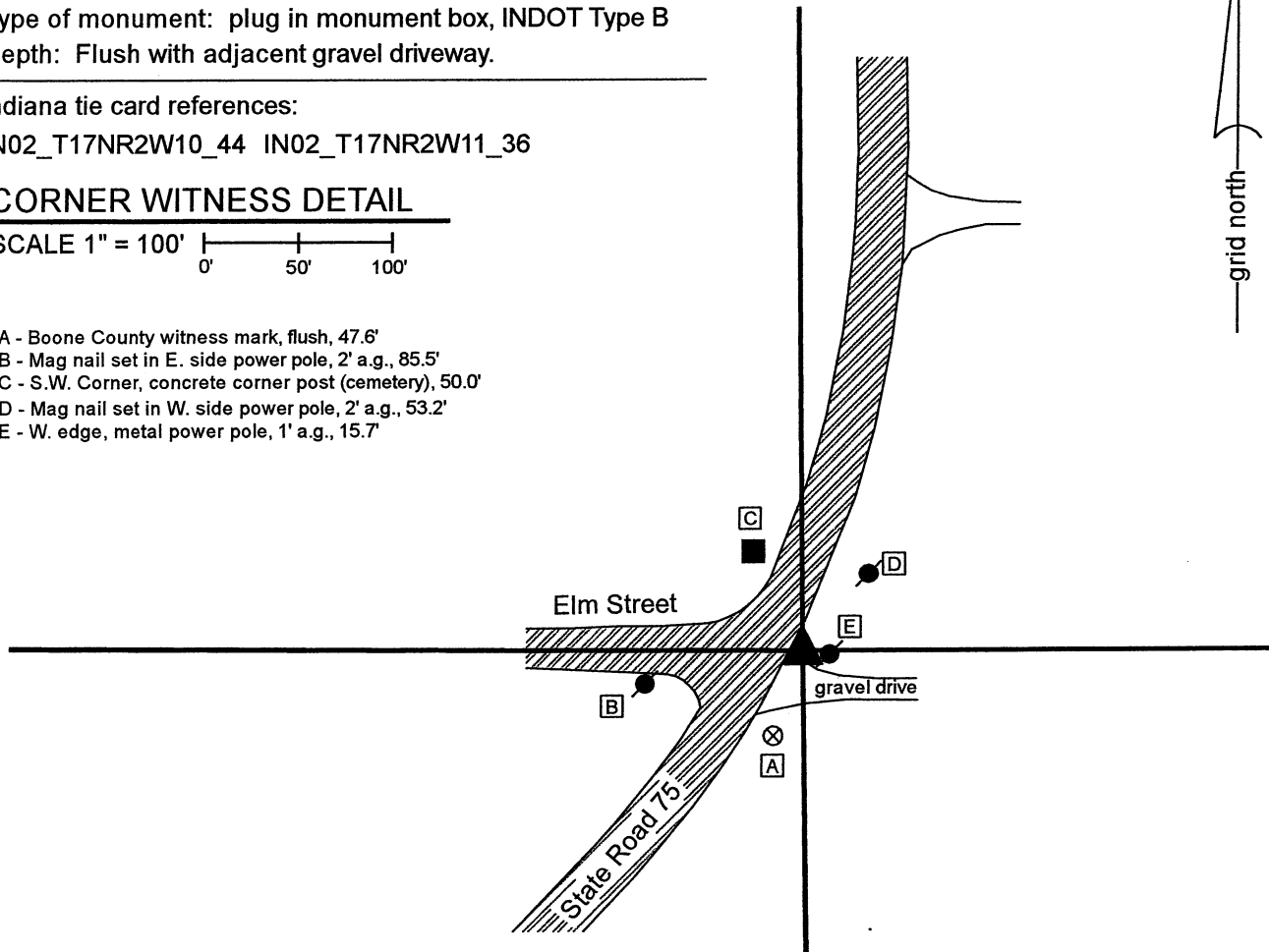
IN02_T17NR2W10_44 IN02_T17NR2W11_36

CORNER WITNESS DETAIL

SCALE 1" = 100'

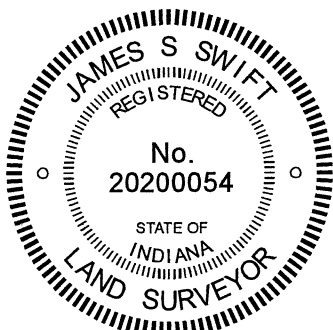



- A - Boone County witness mark, flush, 47.6'
- B - Mag nail set in E. side power pole, 2' a.g., 85.5'
- C - S.W. Corner, concrete corner post (cemetery), 50.0'
- D - Mag nail set in W. side power pole, 2' a.g., 53.2'
- E - W. edge, metal power pole, 1' a.g., 15.7'




The Type B monument was found in place and accepted as marking the corner.

A BCS tie card dated December, 2003 shows the corner as a railroad spike. This monument was subsequently removed by INDOT and replaced by a Type B monument. The monument is in an area of fill, in-line with the southerly prolongation of the center of State Road 75 from the north and in-line with the easterly prolongation of the center of Elm Street from the west. No excavation was performed at this corner and the Type B monument is accepted as marking the corner.




Kenneth E. Hedge, County Surveyor


James S. Swift, IN LS 20200054
July 31, 2019
Revised December 7, 2020

Jackson Township

Section 10 T17N, R2W	Section 11 T17N, R2W
-------------------------	-------------------------

SECTION CORNER RECORD

SW 800-800

BOONE COUNTY SURVEYOR'S OFFICE

State Plane grid coordinates NAD83 (2011):

Section Corner: North: 1702852.11 East: 3082809.81 (U.S. survey feet)

N.E. Corner of pillar: North: 1702852.40 East: 3082810.11 (U.S. survey feet)

Type of monument: top, center of 8" diameter concrete monument

Two inches above ground, located below N.E. corner of brick pillar

Indiana tie card references:

IN02_T17NR2W11_72 IN02_T17NR2W10_80

IN02_T17NR2W15_08 IN02_T17NR2W14_00

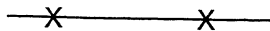
CORNER WITNESS DETAIL

SCALE 1" = 40'

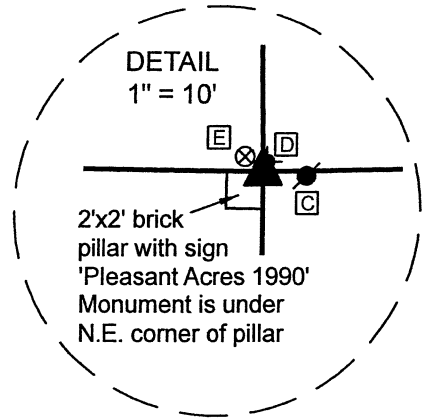
0' 20' 40'



- vinyl slat fence

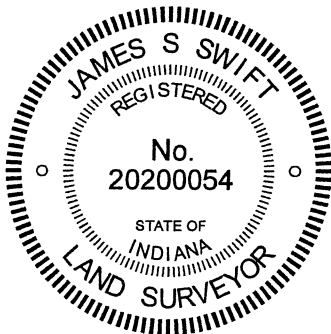
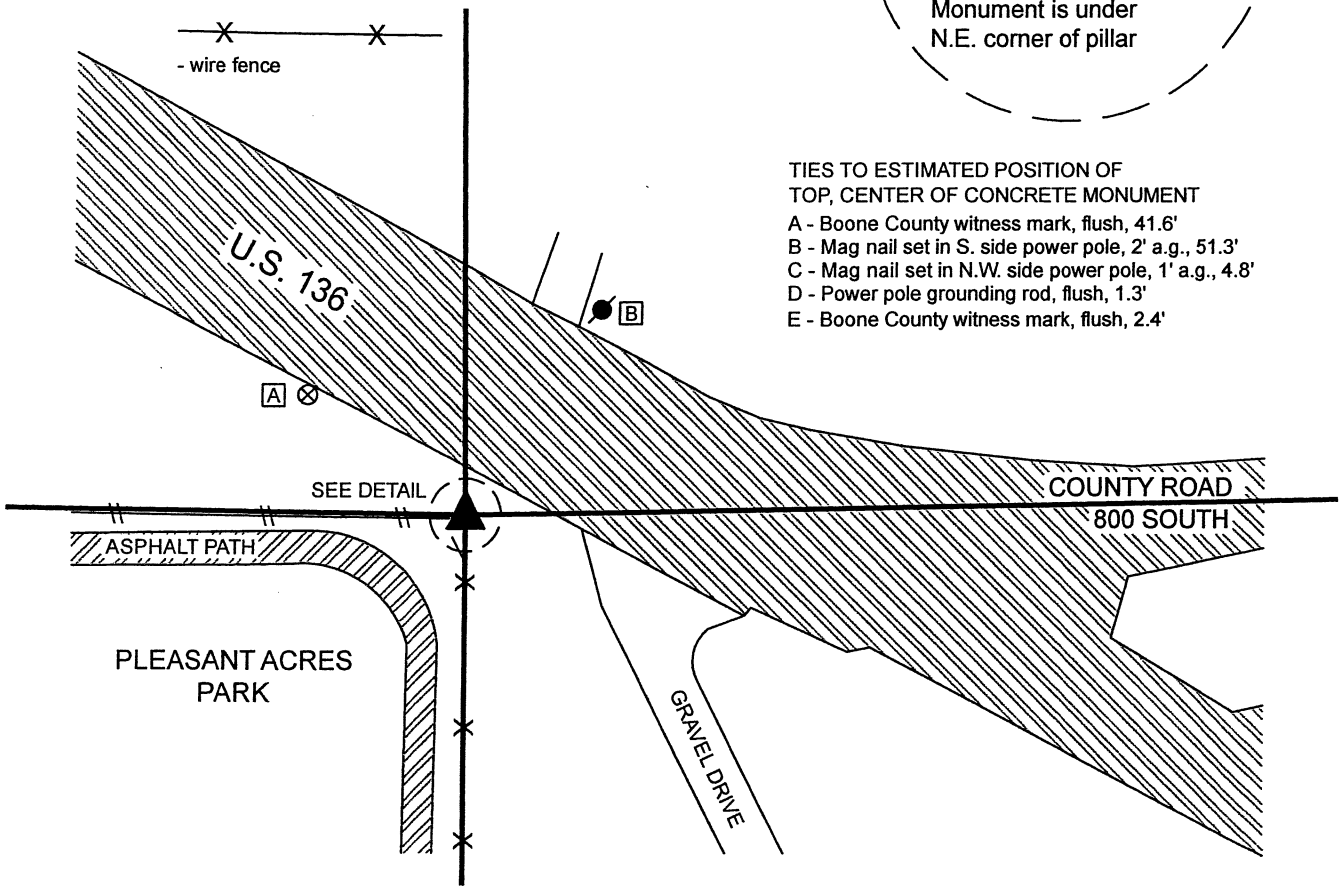


- wire fence



TIES TO ESTIMATED POSITION OF TOP, CENTER OF CONCRETE MONUMENT

- A - Boone County witness mark, flush, 41.6'
- B - Mag nail set in S. side power pole, 2' a.g., 51.3'
- C - Mag nail set in N.W. side power pole, 1' a.g., 4.8'
- D - Power pole grounding rod, flush, 1.3'
- E - Boone County witness mark, flush, 2.4'



Kenneth E. Hedge
Kenneth E. Hedge, County Surveyor

James S. Swift
James S. Swift, IN LS 20200054

January 27, 2021 PAGE 1 OF 2

Jackson Township
Boone County

Eel River Township
Hendricks County

Section 10 T17N, R2W	Section 11 T17N, R2W
Section 15 T17N, R2W	Section 14 T17N, R2W

BOONE COUNTY SURVEYOR'S OFFICE

The concrete monument marking the corner is situated under the northeast corner of a 2-foot by 2-foot brick pillar with a placard on the north side stating "Pleasant Acres 1990."

No specific descriptions of this corner were found in the BCS Surveyor's Record beyond the original establishment of the corner as a wood post in 1820.

A Location Control Route Survey by William A. Schmidt, IN LS No. 87001, recorded as Instrument 9800010682 in the Office of the Hendricks County Surveyor states, with respect to this corner, "Found 203 diameter concrete monument with hole in center protruding 50 on an east west fence line at the apparent NW corner of Section 14-T17N-R2W. No information on corner available from Hendricks County Surveyor's Office. The corner uncertainty is estimated to be +/- 1 meter." It is noted that all dimensions on this survey are in metric units. The reference to the number 203 represents a reference to millimeters, which equates to 8 inches. The number 50 is also stated in millimeters, which equates to 2 inches.

The plat of the minor subdivision, Hillview Estates #2, certified by Jerry L. Carter, IN LS No. S0350, recorded as Instrument 200130408 in the Office of the Hendricks County Surveyor shows the corner as "Conc. Monument (Fnd)"

An ALTA/ACSM Land Title Survey by Joshua David Werner, IN LS No. 21200020, recorded as Instrument 2019000353 in the Office of the Boone County Recorder, shows the corner as a 5/8" rebar with cap stamped "Schneider Firm "0001" Set. The Surveyor's Report for this survey states, "A rebar was set at the apparent Southeast Corner of said Southeast Quarter, and the uncertainty in its location is unknown. A drill hole was found in a concrete post monumenting the corner during prior field work by The Schneider Corporation." The report references the two documents noted above as recorded in the Hendricks County Recorder's Office.

This corner was investigated over the course of several years. Extensive surveying was performed along the section line to the west, locating numerous rebars and posts.

On first sight, it may be observed that the base of the 2-foot by 2-foot brick pillar at the northeast corner of the Pleasant Acre Park, Jamestown, Indiana, is uniform, except for the northeast corner of the pillar. Under this corner of the pillar, the north and east edges of a cylindrical piece of concrete are visible. The top of this piece of concrete is not visible, as it is situated under the brick pillar. The concrete object protrudes approximately 2 inches out of the ground. Upon preliminary investigation, no other monument was found in the immediate vicinity of the corner. Investigation of the area indicates that the numerous rebars found along the line to the west generally fit with a line which terminates at this concrete object. This observation is complicated by the fact that two different monuments have been held to mark the south quarter corner of Section 11, being the same as the north quarter corner of Section 15 (see BCS Corner SW 800-850). But even taking this complication into consideration, the concrete object under the brick pillar fits reasonably well with found monumentation to the west and also fits with fence evidence to the south and west.

The Location Control Route Survey referenced above shows a diagram for the corner which demonstrates the relative position of the corner with respect to three distance ties. Two of the ties appear to be no longer present, but one of the ties remains, being a nail in a bottle cap in the north edge of the power pole adjacent to the corner and slightly east of the brick pillar. This tie shows a distance of 1.567 meters, which fits precisely with the estimated position of the top of the concrete object below the corner of the brick pillar. It is also noted that, based on the visible north and east edges, the concrete object is 8 inches in diameter, matching the call in the Route Survey. As noted above, it protrudes 2 inches out of the ground, also matching the call in the Route Survey.

Prior to 2018, the only monument which appeared to be marking the corner was the partially visible concrete monument. No documentation had been produced at that time, as the position of the corner remained uncertain and sufficient proof had not yet been produced to reliably call the monument the corner. However, in November, 2018, a rebar bearing a plastic cap stamped "Schneider Firm 0001" was set near the southwest corner of the pillar. The aforementioned ALTA/ACSM Land Title Survey states that the rebar was set in place of a concrete monument previously found. Upon contact, Josh Werner carefully studied the data sets from which the concrete monument was stated to have been previously found. His review of the data led him to the conclusion that, although a previous crew had stated the monument to be found, in fact that crew had computed the position of the monument with respect to remote data shown on the Schmidt Route Survey, and labelled it incorrectly in the data set as having been found whereas it was actually computed. Mr. Werner concluded that minimal confidence should be attached in the position of the rebar marking the corner.

Further investigation into the origin of the brick pillar yielded no certain date of its construction. It would be logical to conclude that the pillar was built after the date of the two surveys which held the monument located under the pillar, but this cannot be stated with certainty.

Given the references to the monument on the aforementioned documents, the harmony of the position of the monument with the evidence of other survey monuments and evidence of fences to the south and west, and given that the monument appears to be of the same dimensions and height as that called in the Schmidt Route Survey and also appears to fit precisely with the one remaining distance tie shown on that survey, the existing monument is held as marking the corner.

The monument remains inaccessible, below the base of the brick pillar. The coordinates shown hereon represent the position of the northeast corner of the brick pillar as located in the field and the position of the center of the monument, as estimated with respect to the dimensions of the monument. The rebar with Schneider cap remains near the southwest corner of the pillar, 2.4 feet south and 1.8 feet west of the computed position of the center of the monument.