

SECTION CORNER RECORD

BOONE COUNTY SURVEYOR'S OFFICE

NW 400-250

State Plane grid coordinates NAD83 (CORS96):

North: 1766688.64 East: 3111572.18 (U.S. survey feet)

Type of monument: Harrison, 4" disk 'Section Corner'

Depth: Four inches above adjacent ground

Indiana tie card references:

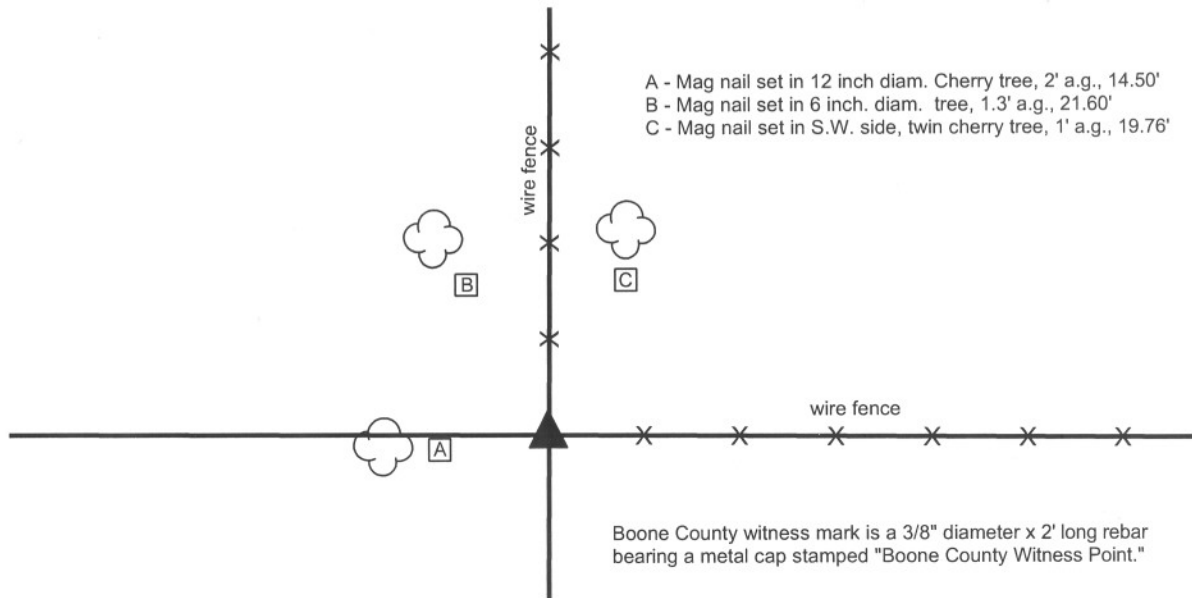
IN02_T19NR1W10_76

IN02_T19NR1W15_04



CORNER WITNESS DETAIL

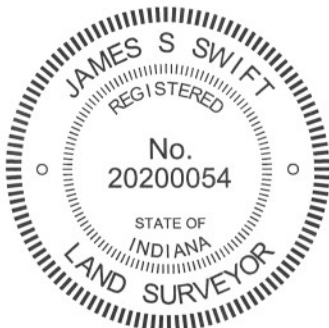
SCALE 1" = 20'



The harrison monument was set in place of a stone found.

No specific descriptions of this corner were found in the BCS Surveyor's Record, nor were any recent BCS tie cards found referencing it. The corner is shown as a stone found on a survey by C. David Helton dated June 15, 1998 and recorded as instrument 9809245 in the Office of the Boone County Recorder. The corner is also shown as a stone found on a survey by Paul I. Cripe, Inc. dated April 23, 1997.

This corner was excavated and monumented on May 10, 2012. The stone was found at the corner of fences to the north and east. The corner post was present but lying on the ground adjacent to the stone to the northeast. Several rocks were found in the immediate vicinity of the corner but the stone held was the obvious choice as the monument marking the corner. This stone was upright with a distinct high point near the center of the stone in the E-W dimension and near the north edge of the stone. The north edge was flat and vertical. The position of the stone fit with the Helton and Cripe surveys. The stone measured 16 inches E-W by 12 inches N-S and 15 inches tall. The stone was moderately stable, though it could be moved by prying with a shovel. The stone did not appear to be employed as a brace rock for the adjacent corner post. Although the stone is not mentioned in the BCS Surveyors record, it did have several characteristics found associated with corner stones, fit with the local evidence in the form of the fence corner and has been held for the two known surveys of the adjacent property. The stone was removed and the harrison monument was set in concrete in the position of the top, high point of the stone.



Kenneth E. Hedge
Kenneth E. Hedge, County Surveyor

James S. Swift
James S. Swift, IN LS 20200054
January 15, 2013

Washington Twp

Section 10
T19N, R1W

Center Twp

Section 15
T19N, R1W

PHOTOGRAPHIC DOCUMENTATION

Date of photography: May 9-11, 2012

View of the stone and corner area after initial clearing, including removal of the dead tree shown in the picture below. The paint spot on the top of the stone represents the specific point held as the corner.



Side view of the stone after it was removed from the ground.



View of the stone and corner area prior to clearing and excavation. Note the old corner post lying on the ground near the stone.



The harrison monument set in place of the stone.



For details and documentation, refer to related sheet "Section Corner Record."

SECTION CORNER RECORD

NW 400-300

BOONE COUNTY SURVEYOR'S OFFICE

State Plane grid coordinates NAD83 (CORS96):

North: 1766697.91 East: 3108886.25 (U.S. survey feet)

Type of monument: 5/8" rebar with metal cap stamped "Boone County Surveyor"

Depth: Flush with adjacent ground

Indiana tie card references:

IN02_T19NR1W09_80 IN02_T19NR1W10_72

IN02_T19NR1W16_08 IN02_T19NR1W15_00

CORNER WITNESS DETAIL

SCALE 1" = 40'



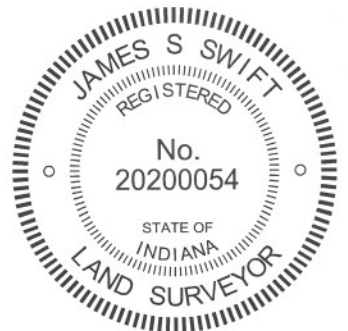
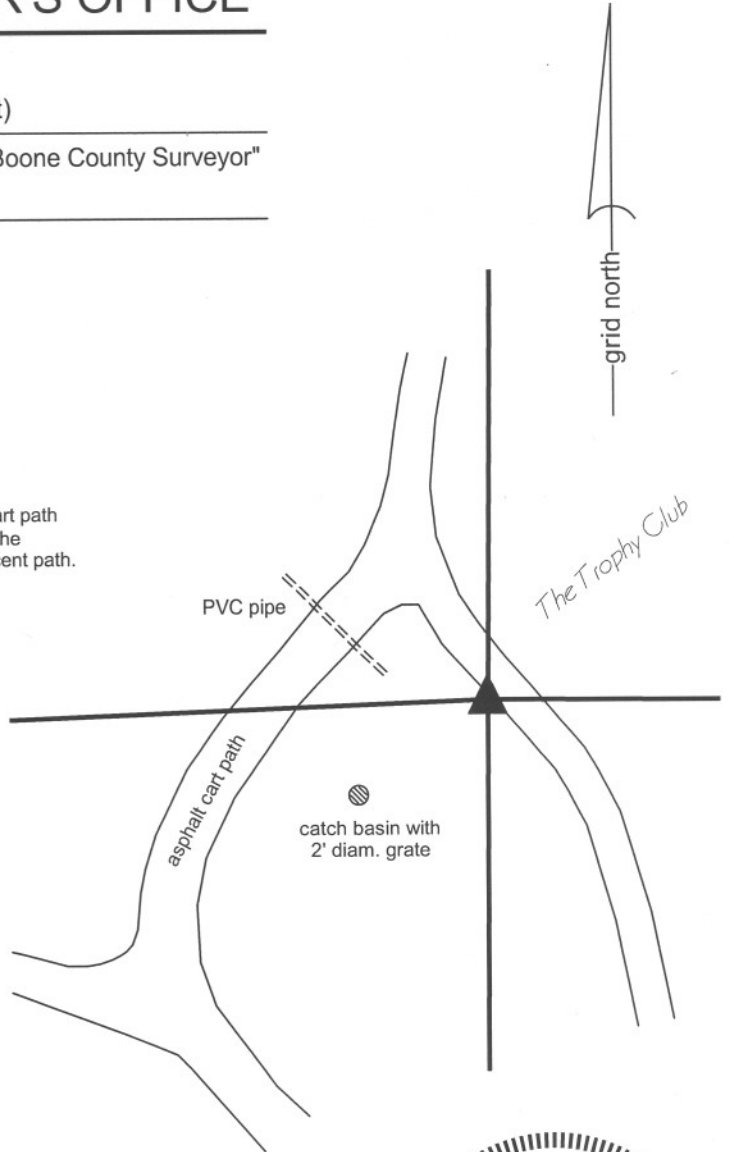
Note: the capped rebar is approximately 1 foot west of the asphalt golf cart path and approximately 25 feet southeasterly along the edge of the path from the intersection of the south edge of the path with the south edge of the adjacent path. Additional, specific distance ties are not provided.

The rebar was set in a computed position.

A BCS record of October 12, 1912 states "located from line tree 5.86 [chains] north of corner. Drove stake." The corner is also included in a metes and bounds description written out in the BCS Surveyor's Record, dated June 7, 1943. This description places the corner at 2648 feet south of the east quarter corner of section 9. The description also places the east quarter corner at 2649 feet east of the center of section. The east quarter corner (see documentation for corner NW 450-300) was established per a stone found in 1970. The center of section (NW 450-350) has not been excavated, though a nail at the county road intersection is believed to be set over the top of a railroad rail slanted over a stone, per BCS records of 1970. The distance between the east quarter corner and the nail believed to be marking the center of section agrees precisely with the 1943 distance, within uncertainties of significant digits.

No monumentation or evidence of the subject corner was found in the immediate vicinity of the expected position thereof. A well established, ancient fence was found to the north, beginning approximately 350 feet north of the corner. The subject corner was established at 2648.13 feet from the east quarter corner on a line prolonged from the east quarter corner south along the existing, ancient fence. Establishing the corner as such holds the best available evidence of the section line in the form of the fence, holds the distance from the 1943 description and honors the same approach to establishing the corner as the 1912 corner record. The precise distance of 2648.13 feet, rather than 2648.0, was borrowed from a survey by C. David Helton dated June 15, 1998 and recorded as instrument 9809245 in the Office of the Boone County Recorder. The position of the corner as defined by the fence prolonged to the south (i.e. the approach held to compute the position of this corner) falls approximately 1.7 feet west of the position of the corner held by Helton, as computed from remote points shown on that survey.

This corner was originally established as a wood post in May, 1829.



Kenneth E. Hedge

 Kenneth E. Hedge, County Surveyor

James S. Swift

 James S. Swift, IN LS 20200054
 January 15, 2013

Washington Township

Center Township

Section 9 T19N, R1W	Section 10 T19N, R1W
Section 16 T19N, R1W	Section 15 T19N, R1W

SECTION CORNER RECORD

BOONE COUNTY SURVEYOR'S OFFICE

NW 450-200

State Plane grid coordinates NAD83 (CORS96):
 North: 1769316.11 East: 3114232.22 (U.S. survey feet)

Type of monument: Harrison, 4" disk 'Section Corner'
 Depth: six inches below adjacent road surface

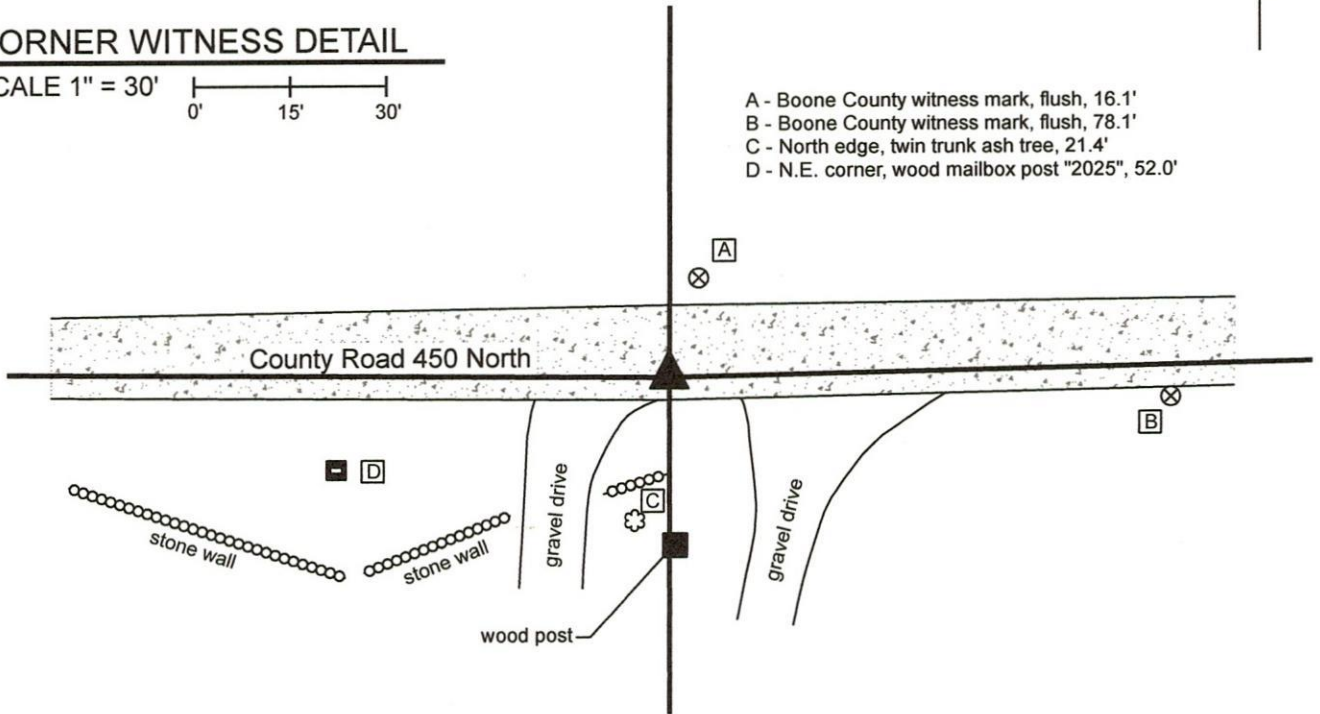
Indiana tie card references:
 IN02_T19NR1W10_44 IN02_T19NR1W11_36



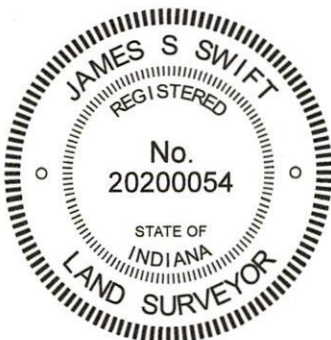
CORNER WITNESS DETAIL

SCALE 1" = 30'

- A - Boone County witness mark, flush, 16.1'
- B - Boone County witness mark, flush, 78.1'
- C - North edge, twin trunk ash tree, 21.4'
- D - N.E. corner, wood mailbox post "2025", 52.0'



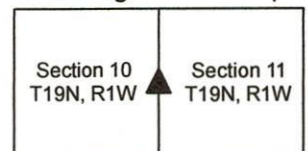
The Harrison monument was set over a stone found. No specific descriptions of this corner were found in the BCS Surveyor's Record beyond the original establishment of the corner as a wood post in 1829. The stone is noted as the terminal point for measurements in BCS records of 1839, 1866, 1896 and 1908, indicating that some monument was present from which to measure at those times. This corner was excavated on June 23, 2014. Prior to excavation, a 1/2 inch diameter rebar was found near the surface of the road, in-line with evidence of occupation to the south. No documentation was found to indicate the source of the rebar. Excavation revealed a stone found at 14 inches deep, slightly south and west of the rebar. The stone was at the bottom of the road bed, slightly embedded in the clay layer below the road bed. The stone was horizontal, oriented in cardinal directions with no obvious mark, matching the characteristics expected for a stone for which the records are similar (measurement references but no specific description in the BCS Surveyor's Record). The stone measured 13 inches N-S by 9 inches E-W by 7 inches tall. The stone was removed temporarily for purposes of probing below. No further evidence was found below and the stone was replaced in the position as found. The stone was accepted as the best available evidence of the corner. A Harrison monument was set directly above the top, center point of the stone. The rebar, removed during excavation, had been 1.6 feet north and 0.4 foot east of the top, center of the stone. It is noted that the line bearing east from this corner to the east line of the Thorntown Reserve, 802 feet east, is held per June, 1866 records for section 11. Please refer to documentation for the adjacent corner of the Reserve line, NW 450-200RSV (March 3, 2020).



Kenneth E. Hedge
 Kenneth E. Hedge, County Surveyor

James S. Swift
 James S. Swift, IN LS 20200054
 March 3, 2020

Washington Township



SECTION CORNER RECORD

BOONE COUNTY SURVEYOR'S OFFICE

NW 450-300

State Plane grid coordinates NAD83 (CORS96):
 North: 1769345.95 East: 3108909.04 (U.S. survey feet)

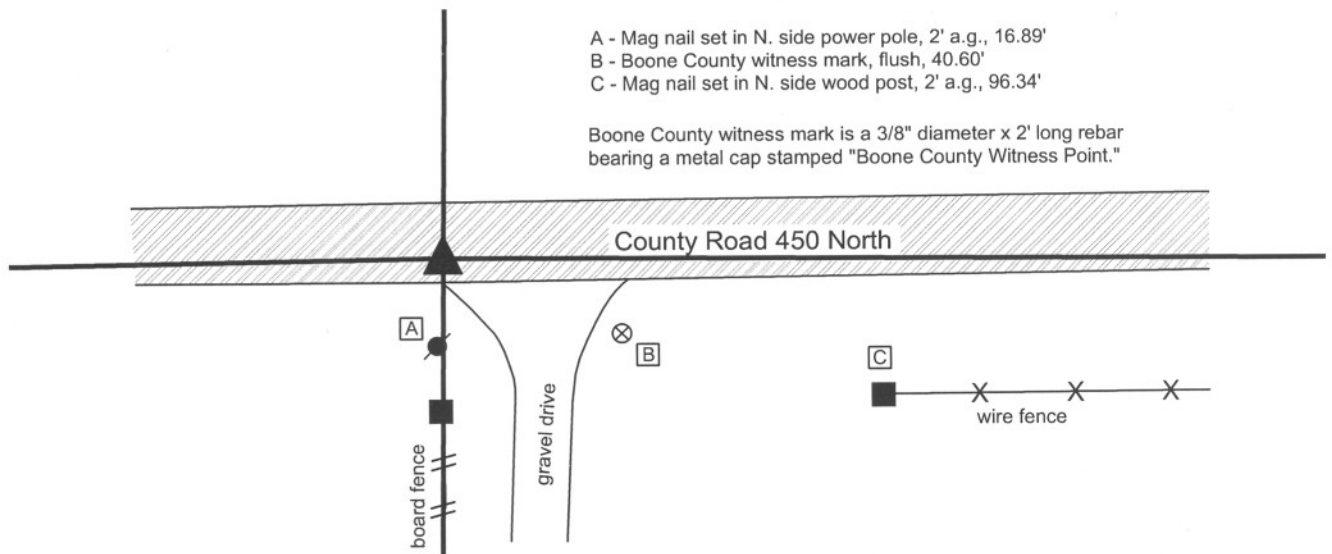
Type of monument: Harrison, 4" disk 'Section Corner'
 Depth: Flush with adjacent road surface

Indiana tie card references:
 IN02_T19NR1W09_44
 IN02_T19NR1W10_36



CORNER WITNESS DETAIL

SCALE 1" = 40'



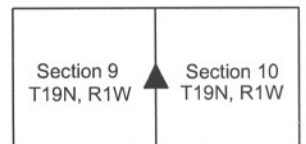
The harrison monument was set over a vertical section of railroad rail found.
 No specific descriptions of this corner were found in the BCS Surveyor's record, though it is mentioned in a metes and bounds description written out in said record, dated 1943. A BCS tie card dated August 1970 states "stone located. Set rail."
 The railroad rail was found 11 inches deep in a hole in the asphalt. It is known that it was a common practice for BCS field crews in 1970 to remove a stone, when found, and replace it with a rail. The reference on the tie card to "stone located. Set Rail" is accepted as confirmation that the stone was most likely removed. The rail was accepted as marking the corner. The rail was left in place and a harrison monument was set directly over the top of the rail on May 3, 2012.
 This corner was originally established as a wood post in May, 1829.



Kenneth E. Hedge
 Kenneth E. Hedge, County Surveyor

James S. Swift
 James S. Swift, IN LS 20200054
 January 15, 2013

Washington Township



SECTION CORNER RECORD

NW-500-200

BOONE COUNTY SURVEYOR'S OFFICE

State Plane grid coordinates NAD83 (2011):

North: 1771950.07 East: 3114264.48 (U.S. survey feet)

Type of monument: 5/8 inch diameter rebar with cap 'Boone County Surveyor'

Depth: six inches above adjacent ground, at east edge, concrete post

Indiana tie card references:

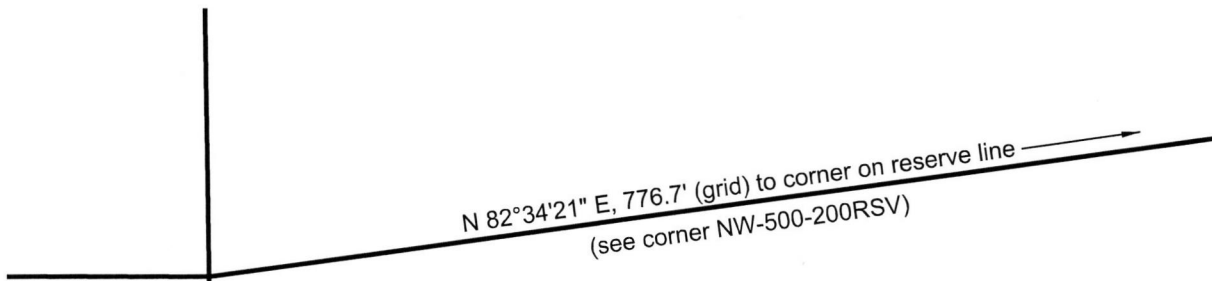
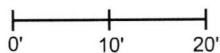
IN02_T19NR1W03_80 IN02_T19NR1W02_72

IN02_T19NR1W10_08 IN02_T19NR1W11_00

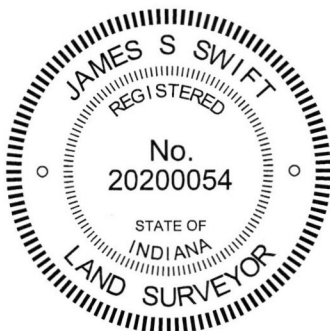


CORNER WITNESS DETAIL

SCALE 1" = 20'



The rebar was set along the east edge of a concrete corner post. No BCS records were found referencing this corner beyond the original establishment of the corner in 1829. The concrete post represents the corner of well established fences to the south and west. The position of the post fits well with proximate corners and fits well with the adjacent corner on the east line of the Thorntown Reserve, approximately 777 feet to the east-northeast. Excavation around the post on November 14, 2017 revealed several stones found, none of which appeared to have been intentionally set as marking the corner. The part of the post below ground was found to be reasonable vertical but the part of the post which is above ground leans toward the west. It is not known how this situation came to be, as one would expect the rigid concrete post to lean uniformly both above and below ground. Nonetheless, that is the situation observed in the field. The position of the post is slightly west of the expected position with respect to the adjacent treaty line corner and the relative position of the corners as reported in the original federal notes of 1829. With the east edge of the post exposed, the rebar was set along the east edge of the concrete and encased in fresh concrete. The rebar is intended to mark the corner. Approximatel one foot of uncertainty may be attributed to the relative position of the rebar and the base of the post. This corner was originally established as a wood post in 1829.



Kenneth E. Hedge
Kenneth E. Hedge, County Surveyor

James S. Swift
James S. Swift, IN LS 20200054
January 10, 2018

Washington Township

Section 3 T19N, R1W	Section 2 T19N, R1W
Section 10 T19N, R1W	Section 11 T19N, R1W