

SECTION CORNER RECORD

BOONE COUNTY SURVEYOR'S OFFICE

SW 100-800

State Plane grid coordinates NAD83 (2011):
 North: 1740044.50 East: 3082616.91 (U.S. survey feet)

Type of monument: INDOT type B monument
 Depth: flush with adjacent road surface

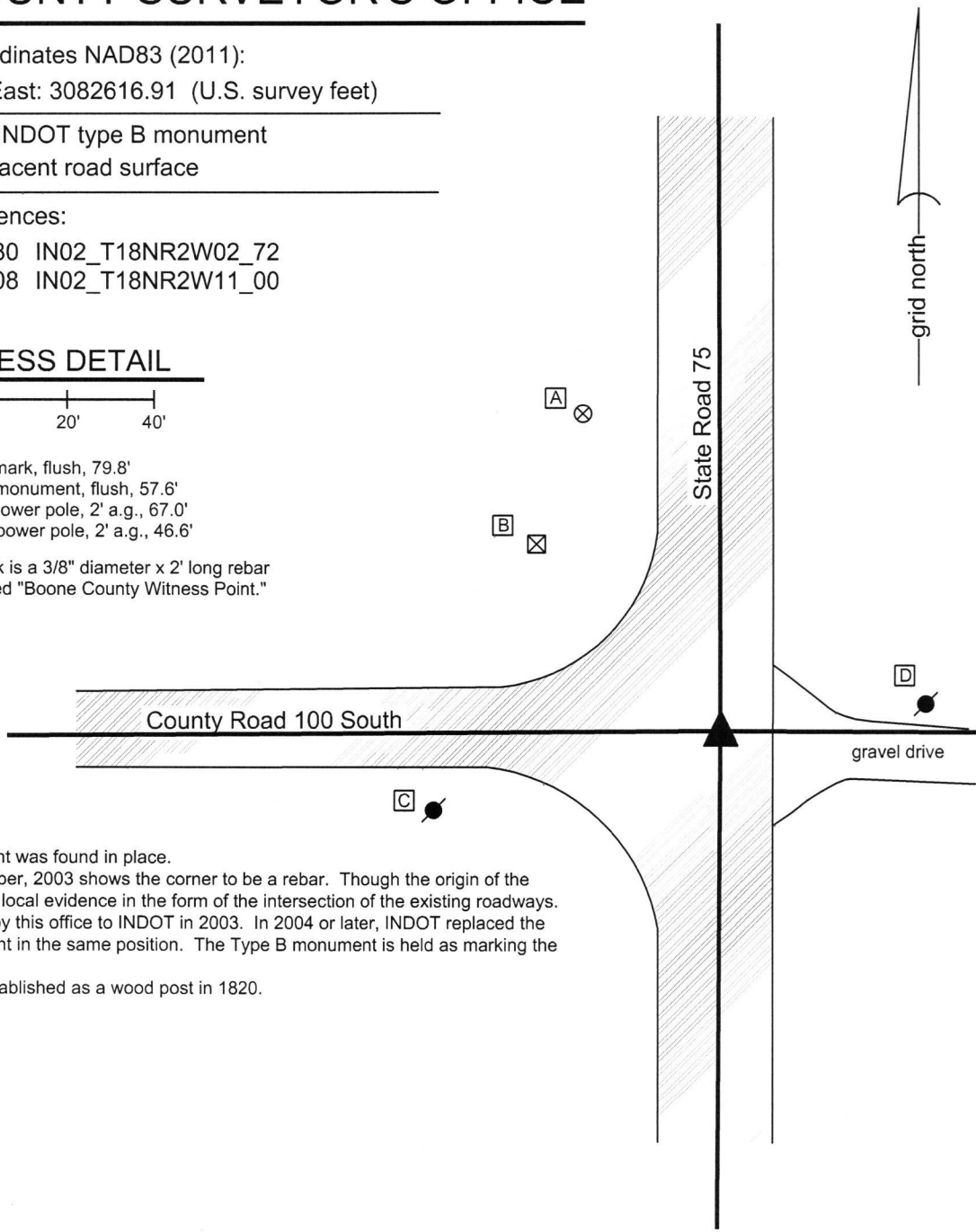
Indiana tie card references:
 IN02_T18NR2W03_80 IN02_T18NR2W02_72
 IN02_T18NR2W10_08 IN02_T18NR2W11_00

CORNER WITNESS DETAIL

SCALE 1" = 40'

- A - Boone County witness mark, flush, 79.8'
- B - SE corner, INDOT RW monument, flush, 57.6'
- C - Mag nail set in E. side power pole, 2' a.g., 67.0'
- D - Mag nail set in W. side power pole, 2' a.g., 46.6'

Boone County witness mark is a 3/8" diameter x 2' long rebar bearing a metal cap stamped "Boone County Witness Point."



The INDOT Type B monument was found in place. A BCS tie card dated December, 2003 shows the corner to be a rebar. Though the origin of the rebar is not known, it fits with local evidence in the form of the intersection of the existing roadways. This tie card was presented by this office to INDOT in 2003. In 2004 or later, INDOT replaced the rebar with a Type B monument in the same position. The Type B monument is held as marking the corner. This corner was originally established as a wood post in 1820.



Kenneth E. Hedge
 Kenneth E. Hedge, County Surveyor

James S. Swift
 James S. Swift, IN LS 20200054
 March 23, 2017

Jefferson Township

Section 3 T18N, R2W	Section 2 T18N, R2W
Section 10 T18N, R2W	Section 11 T18N, R2W

SECTION CORNER RECORD

SW 100-850

BOONE COUNTY SURVEYOR'S OFFICE

State Plane grid coordinates NAD83 (2011):

North: 1740025.04 East: 3079921.87 (U.S. survey feet)

Type of monument: Harrison, 4" disk 'Section Corner'

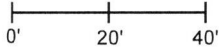
Depth: One inch below adjacent road surface

Indiana tie card references:

IN02_T18NR2W03_76 IN02_T18NR2W10_04

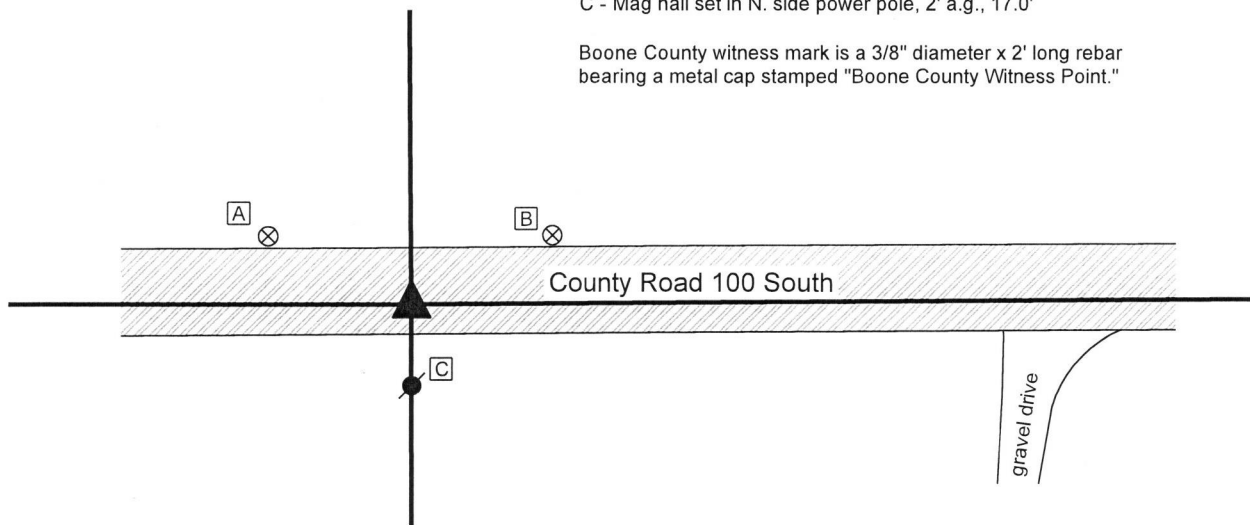
CORNER WITNESS DETAIL

SCALE 1" = 40'



- A - Boone County witness mark, flush, 32.9'
- B - Boone County witness mark, flush 32.7'
- C - Mag nail set in N. side power pole, 2' a.g., 17.0'

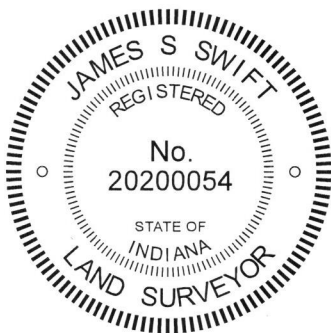
Boone County witness mark is a 3/8" diameter x 2' long rebar bearing a metal cap stamped "Boone County Witness Point."



The Harrison monument was set over a stone found.

A BCS record of October 30, 1871 states, with respect to this corner, "Reest. from stps of Beech B. Tree. Set Rock 16.10.10 marked +." This record is interpreted to indicate that the corner position was established from the stump of a beech tree which was known to be a bearing tree. A BCS tie card dated October 17, 1969 states, with respect to this corner, "No stone. RRR Set."

Excavation was performed at this corner on July 26, 2019. Prior to excavation, a 1/2 inch diameter rebar was found near the surface of the road. Excavation revealed a railroad rail found at 6 inches deep. It was apparent that the rebar had been driven along the north edge of the center of the vertical rail. Further excavation revealed the stone described in the 1871 record found at 10 inches deep, south and east of the rebar and rail. The stone is 16 inches tall, as measured along the north side, by 10 inches E-W by 10 inches N-S. No specific marks were detected on the stone, though it appeared that the top of the stone had been previously scraped by road grading equipment, possibly obliterating an etched mark. The stone was vertical and embedded in the clay layer below the road. The stone was accepted as being the same monument set in 1871 and was held as marking the corner. The stone was left in place, the top 7 inches of the stone were encased in concrete and a Harrison monument was set directly over the top, center of the stone. The rebar and rail, both removed during excavation, had been 1.2 foot north and 1.5 foot west of the top, center of the stone. It is noted that the distances from this corner to the corners to the east and west, respectively, are not equal, with the distance to the corner to the east being approximately 26.5 feet longer than the distance to the corner to the west. This imbalance matches closely with the distances reported in the 1871 record for the south line of section 3. This corner was originally established as a wood post in 1820.



Kenneth E. Hedge
Kenneth E. Hedge, County Surveyor

James S. Swift
James S. Swift, IN LS 20200054

August 28, 2019

Jefferson Township

Section 3
T18N, R2W

Section 10
T18N, R2W

SECTION CORNER RECORD

SW 100-900

BOONE COUNTY SURVEYOR'S OFFICE

State Plane grid coordinates NAD83 (2011):

North: 1740024.08 East: 3077253.36 (U.S. survey feet)

Type of monument: Harrison, 4" disk 'Section Corner'

Depth: One inch below adjacent road surface

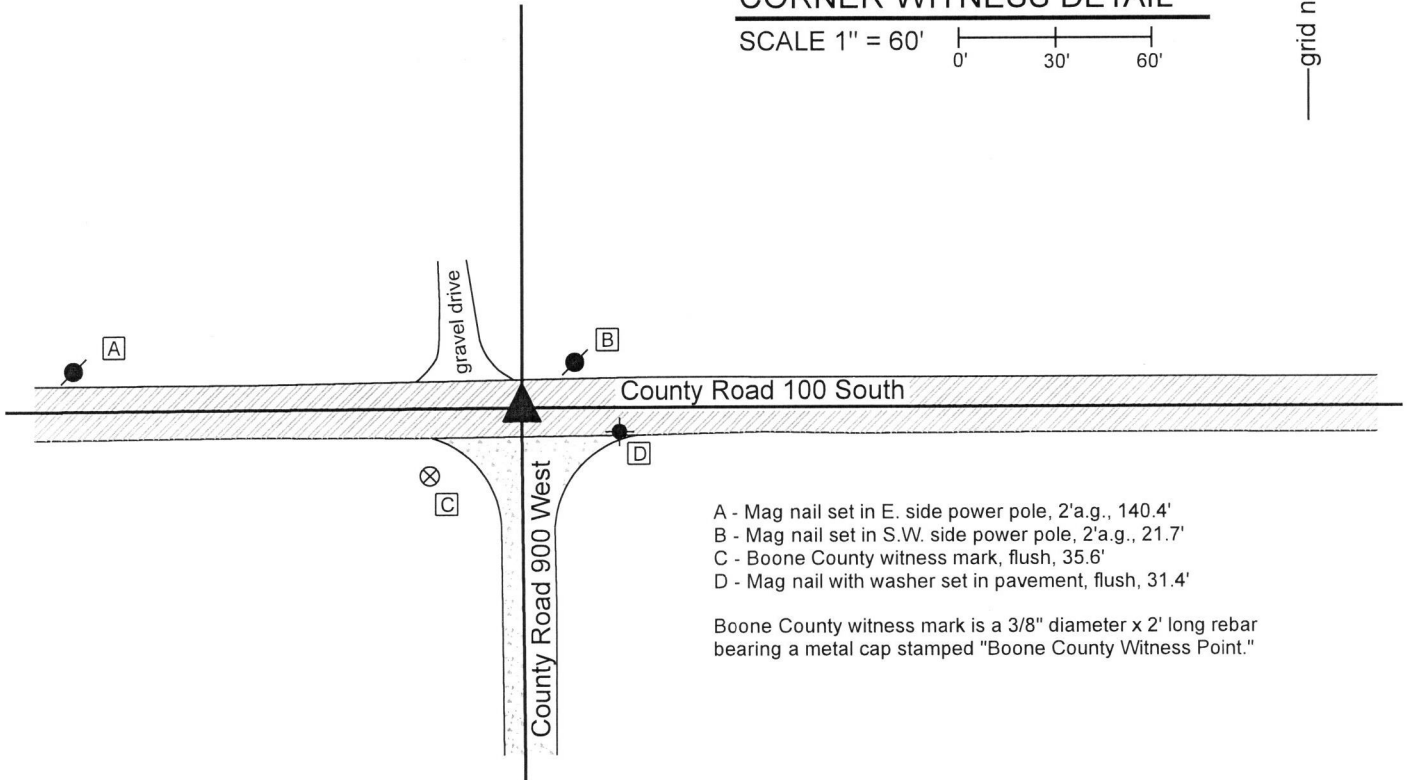
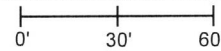
Indiana tie card references:

IN02_T18NR2W04_80 IN02_T18NR2W03_72

IN02_T18NR2W09_08 IN02_T18NR2W10_00

CORNER WITNESS DETAIL

SCALE 1" = 60'



- A - Mag nail set in E. side power pole, 2'a.g., 140.4'
- B - Mag nail set in S.W. side power pole, 2'a.g., 21.7'
- C - Boone County witness mark, flush, 35.6'
- D - Mag nail with washer set in pavement, flush, 31.4'

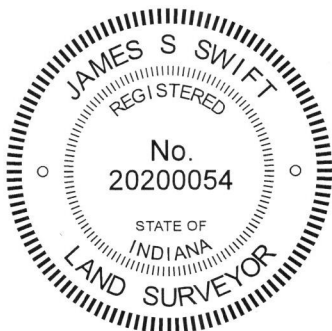
Boone County witness mark is a 3/8" diameter x 2' long rebar bearing a metal cap stamped "Boone County Witness Point."

The Harrison monument was set in place of a vertical section of railroad rail found.

A BCS record dated October 30, 1871 states, with respect to this corner, "There was a rock at corner. (from Ash stp.)" A BCS tie card dated October 17, 1969 calls the corner "Stone Located. RRR set."

This corner was excavated on July 31, 2019. Prior to excavation, a mag nail was found at the surface at the approximate intersection of the two county roads. Excavation revealed a vertical section of railroad rail directly below the mag nail. The rail was removed and further excavation did not reveal any further evidence of the corner. The bottom of the road bed was found at 14 inches deep. It is believed that the stone found in 1969 was removed and replaced in the same position with the rail. This is known to have been a common practice of BCS crews from that era. The position of the nail and rail was held as marking the corner and a Harrison monument was set in the same position as those monuments.

This corner was originally established as a wood post in 1820.



Kenneth E. Hedge
 Kenneth E. Hedge, County Surveyor

James S. Swift
 James S. Swift, IN LS 20200054
 August 28, 2018

Jefferson Township

Section 4 T18N, R2W	Section 3 T18N, R2W
Section 9 T18N, R2W	Section 10 T18N, R2W

SECTION CORNER RECORD

SW 150-800

BOONE COUNTY SURVEYOR'S OFFICE

State Plane grid coordinates NAD83 (2011):

North: 1737399.58 East: 3082601.26 (U.S. survey feet)

Type of monument: INDOT Type B

Depth: flush

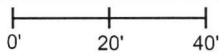
Indiana tie card references:

IN02_T18NR2W10_44 IN02_T18NR2W11_36



CORNER WITNESS DETAIL

SCALE 1" = 40'



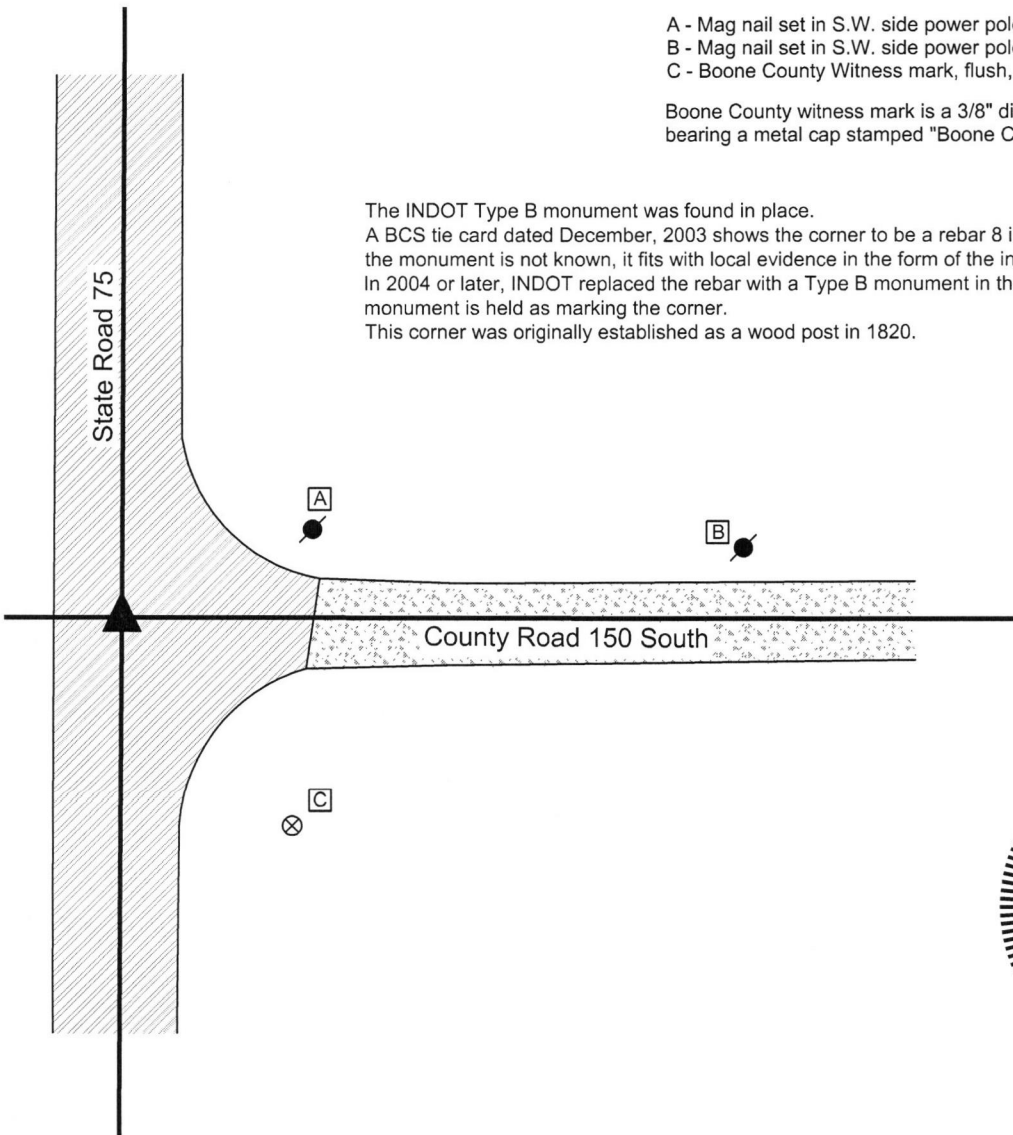
- A - Mag nail set in S.W. side power pole, 42.4'
- B - Mag nail set in S.W. side power pole, 129.4'
- C - Boone County Witness mark, flush, 56.6'

Boone County witness mark is a 3/8" diameter x 2' long rebar bearing a metal cap stamped "Boone County Witness Point."

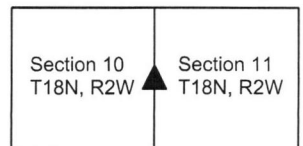
The INDOT Type B monument was found in place.

A BCS tie card dated December, 2003 shows the corner to be a rebar 8 inches deep. Though the origin of the monument is not known, it fits with local evidence in the form of the intersection of the existing roadways. In 2004 or later, INDOT replaced the rebar with a Type B monument in the same position. The Type B monument is held as marking the corner.

This corner was originally established as a wood post in 1820.



Jefferson Township



James S. Swift
James S. Swift, IN LS 20200054
Kenneth E. Hedge
Kenneth E. Hedge, County Surveyor

March 23, 2017

SECTION CORNER RECORD

SW 150-900

BOONE COUNTY SURVEYOR'S OFFICE

State Plane grid coordinates NAD83 (2011):

North: 1737377.82 East: 3077278.16 (U.S. survey feet)

Type of monument: Harrison, 4" disk 'Section Corner'

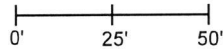
Depth: Six inches below adjacent road surface

Indiana tie card references:

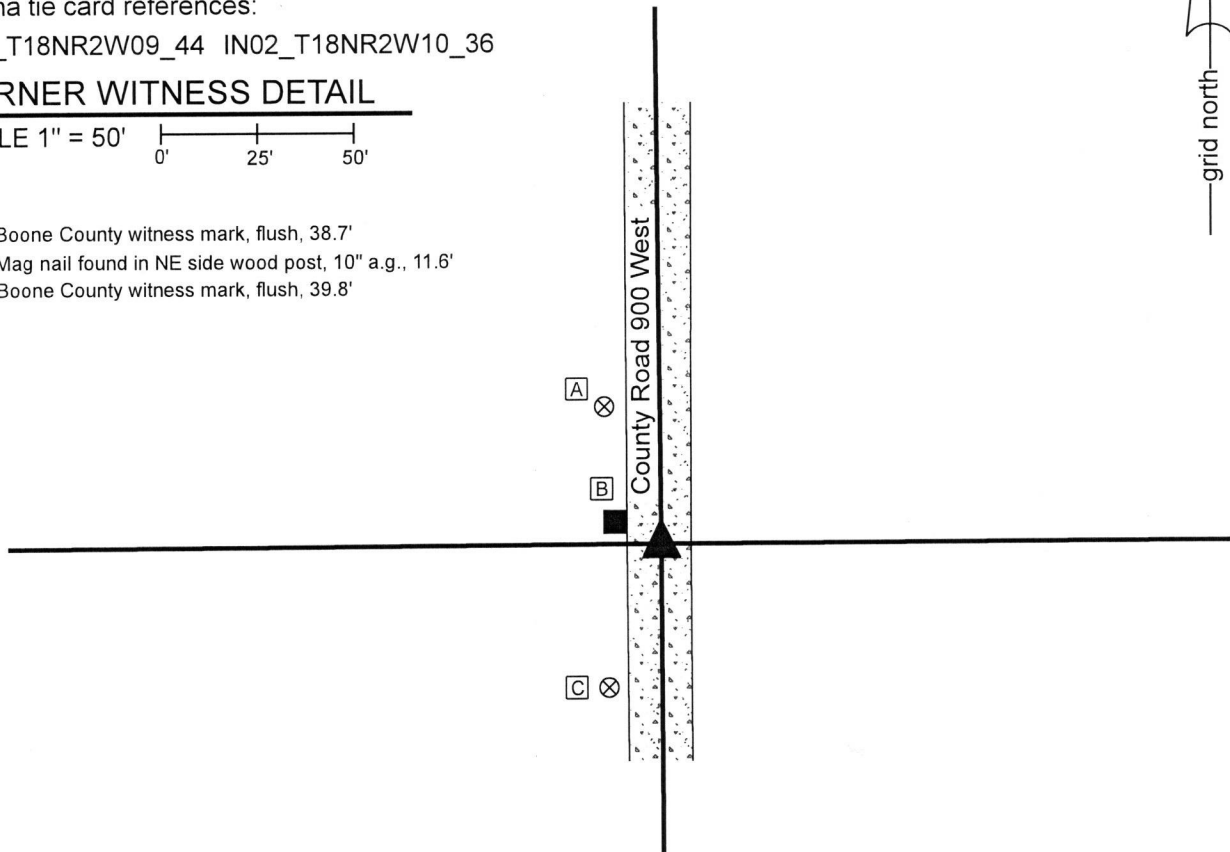
IN02_T18NR2W09_44 IN02_T18NR2W10_36

CORNER WITNESS DETAIL

SCALE 1" = 50'



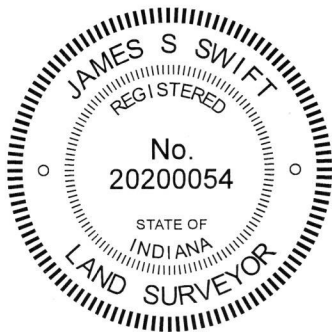
- A - Boone County witness mark, flush, 38.7'
- B - Mag nail found in NE side wood post, 10" a.g., 11.6'
- C - Boone County witness mark, flush, 39.8'



The Harrison monument was set in place of a stone found.

No specific descriptions of this corner were found in the BCS Surveyor's Record beyond the original establishment of the corner as a wood post in 1820. No recent BCS tie cards were found referencing this corner.

Excavation was performed at this corner on October 18, 2019. Prior to excavation, a section of 1/2 inch diameter rebar was found in the approximate center of the county road, opposite a wood post on the west side of the road. Excavation revealed two stones found slightly south and east of the rebar. The upper stone was at 3 inches deep and was over the north edge of the lower stone, which was found at 7 inches deep. The upper stone appeared that it may have been shifted by road grading equipment. It was observed that the road bed is approximately 7 inches thick at this corner. The lower stone was fully embedded in the clay layer below the road bed and appeared to remain undisturbed. The upper stone, as found, was 9 inches N-S by 7 inches E-W by 6 inches thick. The lower stone was 11 inches N-S by 9 inches E-W by 5 inches tall. No specific marks were observed on the stones. The lower stone was accepted as providing the best available evidence of the corner. Both stones were removed and a Harrison monument was set in the position of the top, center of the lower stone. The rebar, removed during excavation, had been 1.5 foot north and 1 foot west of the position held as the corner.



Kenneth E. Hedge
Kenneth E. Hedge, County Surveyor

James S. Swift
James S. Swift, IN LS 20200054
December 3, 2019

Jefferson Township

Section 9 T18N, R2W	Section 10 T18N, R2W
------------------------	-------------------------

SECTION CORNER RECORD

SW 200-800

BOONE COUNTY SURVEYOR'S OFFICE

State Plane grid coordinates NAD83 (2011):

North: 1734755.69 East: 3082584.84 (U.S. survey feet)

Type of monument: INDOT Type B monument

Depth: Flush

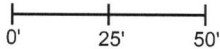
Indiana tie card references:

IN02_T18NR2W10_80 IN02_T18NR2W11_72

IN02_T18NR2W15_08 IN02_T18NR2W14_00

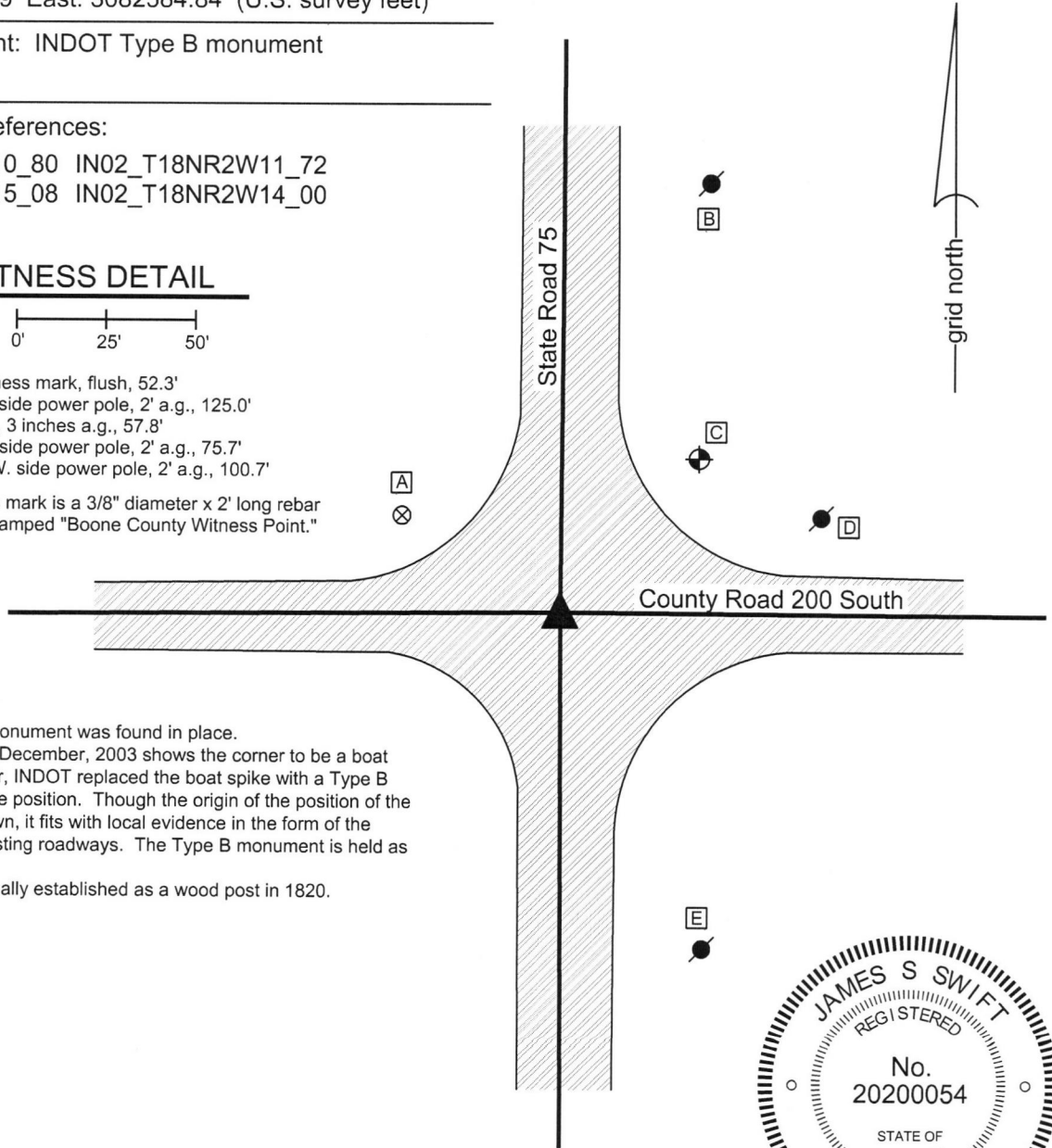
CORNER WITNESS DETAIL

SCALE 1" = 50'



- A - Boone County witness mark, flush, 52.3'
- B - Mag nail set in W. side power pole, 2' a.g., 125.0'
- C - USGS benchmark, 3 inches a.g., 57.8'
- D - Mag nail set in W. side power pole, 2' a.g., 75.7'
- E - Mag nail set in N.W. side power pole, 2' a.g., 100.7'

Boone County witness mark is a 3/8" diameter x 2' long rebar bearing a metal cap stamped "Boone County Witness Point."



The INDOT Type B monument was found in place.

A BCS tie card dated December, 2003 shows the corner to be a boat spike. In 2004 or later, INDOT replaced the boat spike with a Type B monument in the same position. Though the origin of the position of the monument is not known, it fits with local evidence in the form of the intersection of the existing roadways. The Type B monument is held as marking the corner.

This corner was originally established as a wood post in 1820.




Kenneth E. Hedge, County Surveyor

Jefferson Township

Section 10 T18N, R2W	Section 11 T18N, R2W
Section 15 T18N, R2W	Section 14 T18N, R2W

Jackson Township

James S. Swift, IN LS 20200054

March 23, 2017

SECTION CORNER RECORD

SW 200-850

BOONE COUNTY SURVEYOR'S OFFICE

State Plane grid coordinates NAD83 (2011):

North: 1734739.91 East: 3079941.37 (U.S. survey feet)

Type of monument: Harrison, 4" disk 'Section Corner'

Depth: One inch below adjacent road surface

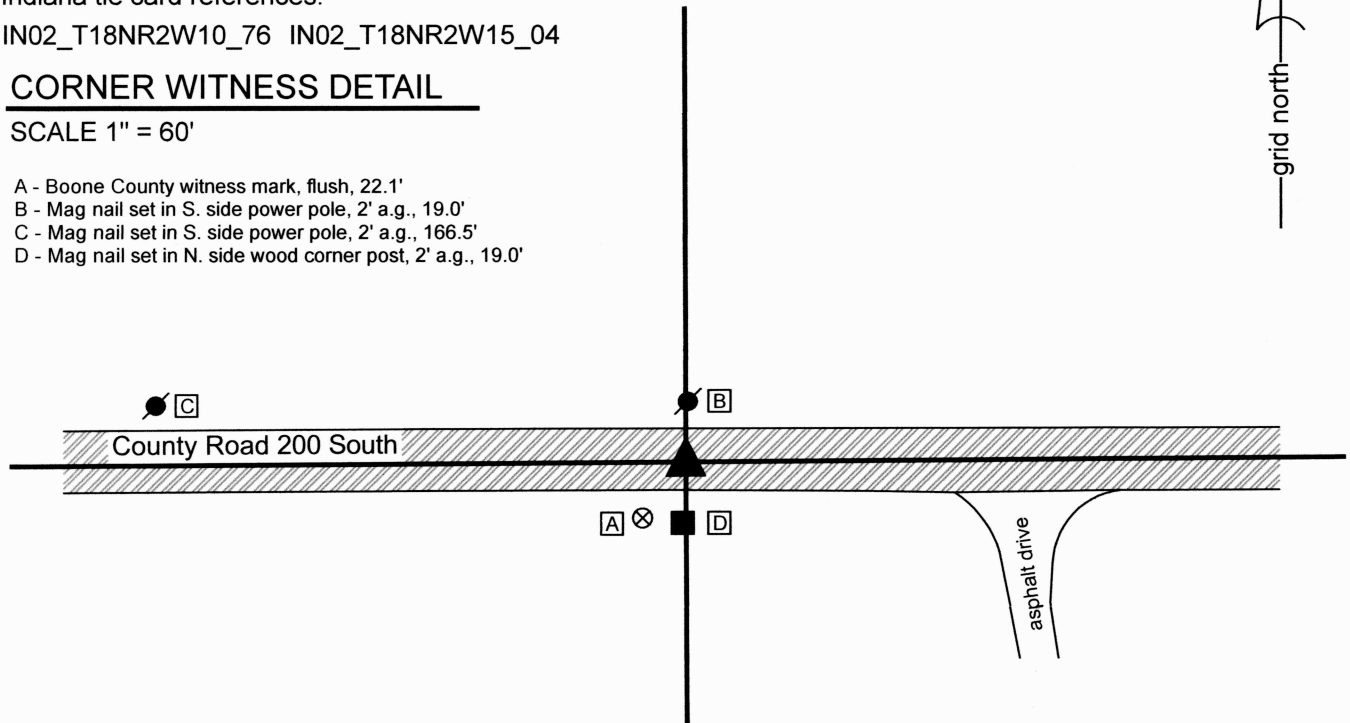
Indiana tie card references:

IN02_T18NR2W10_76 IN02_T18NR2W15_04

CORNER WITNESS DETAIL

SCALE 1" = 60'

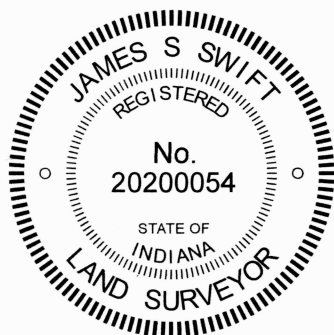
- A - Boone County witness mark, flush, 22.1'
- B - Mag nail set in S. side power pole, 2' a.g., 19.0'
- C - Mag nail set in S. side power pole, 2' a.g., 166.5'
- D - Mag nail set in N. side wood corner post, 2' a.g., 19.0'



The Harrison Monument was set over a stone found.

A BCS Record of November 1, 1871 states, with respect to this corner, "Set two rocks. One rock 7.6.4 +. Top rock 8.6.4 marked." A data sheet among the modern BCS tie cards dated October 8, 1989 states that a railroad rail was found at 4 inches below the surface of the road. The data sheet states "Prorated measurements from other found corners and further search of the area will be needed to verify this R.R. Rail." No record of when the rail was set was found in the BCS records.

Excavation was performed at this corner on December 7, 2023. Prior to excavation, a rebar with plastic cap stamped 'witness point' was found flush with the road surface, in the center of the east-west road, in-line with an old post on the south side of the road. Excavation revealed a railroad rail found 7 inches below grade. The rebar had been driven along the the west edge of the neck of the rail. Further excavation revealed a stone found at 15 inches below grade, slightly east of the rebar and rail. The stone is 11 inches E-W by 10 inches N-S by 8 inches tall. The stone was at the depth of the bottom of the road bed and was in the clay layer below the road bed, though evidence of disruption of the clay below the road bed was apparent in the immediate vicinity of the stone. The stone is not the same dimensions as the the two rocks described in the 1871 record. Those rocks were not found, nor was any other evidence of the corner found in a 5-foot by 5-foot area centered on the rebar and rail. The apparent disruption of the clay area around the stone may explain why the record rocks were not found, as it may be that those rocks were removed and this rock was set in their place. The found stone appeared to have been purposely set to mark the corner, with a clear high point at the top, center of the stone. No specific marks were observed on the stone. The stone fits well with evidence of the corner, being in the center of the east-west road and slightly east of the old post on the south side of the road. The stone was accepted as the best available evidence of the corner. A Harrison monument was set directly of the the top, high point of the stone on December 7, 2023. The rebar and rail, both removed during excavation, had been 0.85 foot west of the top of the stone.



Carol Cunningham
Carol Cunningham, County Surveyor

James S. Swift
James S. Swift, IN LS 20200054

December 13, 2023

Jefferson
Township

Section 10
T18N, R2W

Jackson
Township

Section 15
T18N, R2W

SECTION CORNER RECORD

SW 200-900

BOONE COUNTY SURVEYOR'S OFFICE

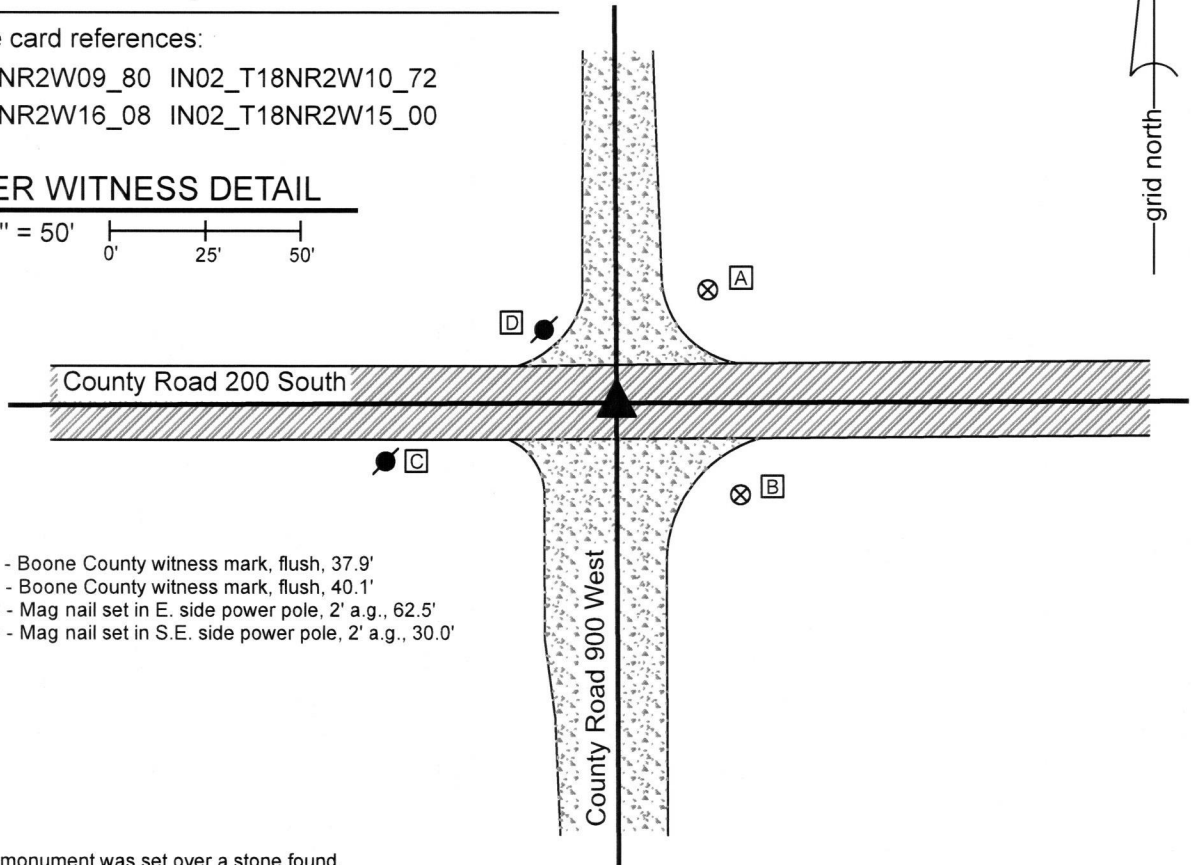
State Plane grid coordinates NAD83 (2011):
 North: 1734724.34 East: 3077292.16 (U.S. survey feet)

Type of monument: Harrison, 4" disk 'Section Corner'
 Depth: One inch below adjacent road surface

Indiana tie card references:
 IN02_T18NR2W09_80 IN02_T18NR2W10_72
 IN02_T18NR2W16_08 IN02_T18NR2W15_00

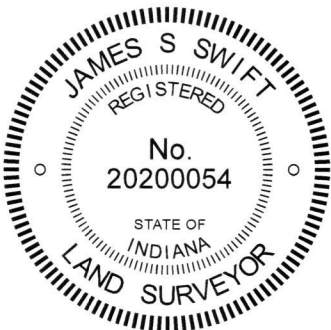
CORNER WITNESS DETAIL

SCALE 1" = 50'



- A - Boone County witness mark, flush, 37.9'
- B - Boone County witness mark, flush, 40.1'
- C - Mag nail set in E. side power pole, 2' a.g., 62.5'
- D - Mag nail set in S.E. side power pole, 2' a.g., 30.0'

The Harrison monument was set over a stone found.
 A BCS record dated April 18-19, 1870 states, with respect to this corner, "Reestab from stump of Beech. Set two rocks. One rock 10.9. 5 1/2. Top rock 11.9.8 +." A BCS tie card dated August 23, 1967 states "Stone Located - 10" RRR N. of Rock."
 This corner was excavated on September 18, 2019. Prior to excavation, a 5/8 inch rebar was found at 1 inch deep in the gravel road intersection. Excavation revealed a vertical section of railroad rail found at 5 inches deep. The rebar had been against the southwest edge of the rail. Excavation also revealed a wood hub found approximately 10 inches north of the rail, also at 5 inches deep. Further excavation revealed the lower stone described in the 1870 record at 30 inches deep. The stone had a distinct etched "+" mark on the top, slightly north of the top center of the stone. The stone measured 10 inches N-S by 9 inches E-W by approximately 5 inches thick. The stone was fully embedded in the clay layer below the road. The bottom of the road bed was found to be at 21 inches deep. Hence, the upper rock, being 11 inches tall, would have protruded into the bottom of the road bed by approximately 2 inches, a typical condition found at other corners throughout the county. The wording on the 1967 tie card implies that a 10 inch rail was set north of the stone found that day. However, the found rail was 30 inches long and the rail had been 10 inches north of the record lower rock. It is believed most likely that, on August 23, 1967, the top rock was found and removed. The lower rock was also apparently found but not removed. Sufficient clearance was evidently not available at that time to place a 30 inch rail (standard size) over the rock, so the rail was set north of the rock. The tie card clearly intends to call for the rock, not the rail, as marking the corner. The wood hub was over the rock. The hub may have been set in 1967 or later. The top, center of the record lower stone was held as marking the corner and a Harrison monument was set over this position.
 This corner was originally established as a wood post in 1820.



Kenneth E. Hedge
 Kenneth E. Hedge, County Surveyor

James S. Swift
 James S. Swift, IN LS 20200054
 September 25, 2019

Jefferson Township

Jackson Township

Section 9 T18N, R2W	Section 10 T18N, R2W
Section 16 T18N, R2W	Section 15 T18N, R2W