

# SECTION CORNER RECORD

SE 100-900

## BOONE COUNTY SURVEYOR'S OFFICE

State Plane grid coordinates NAD83 (NSRS 2007):

North: 1741442.23 East: 3172484.20 (U.S. survey feet)

Type of monument: Harrison, 4" disk 'Section Corner'

Depth: One inch below adjacent road surface

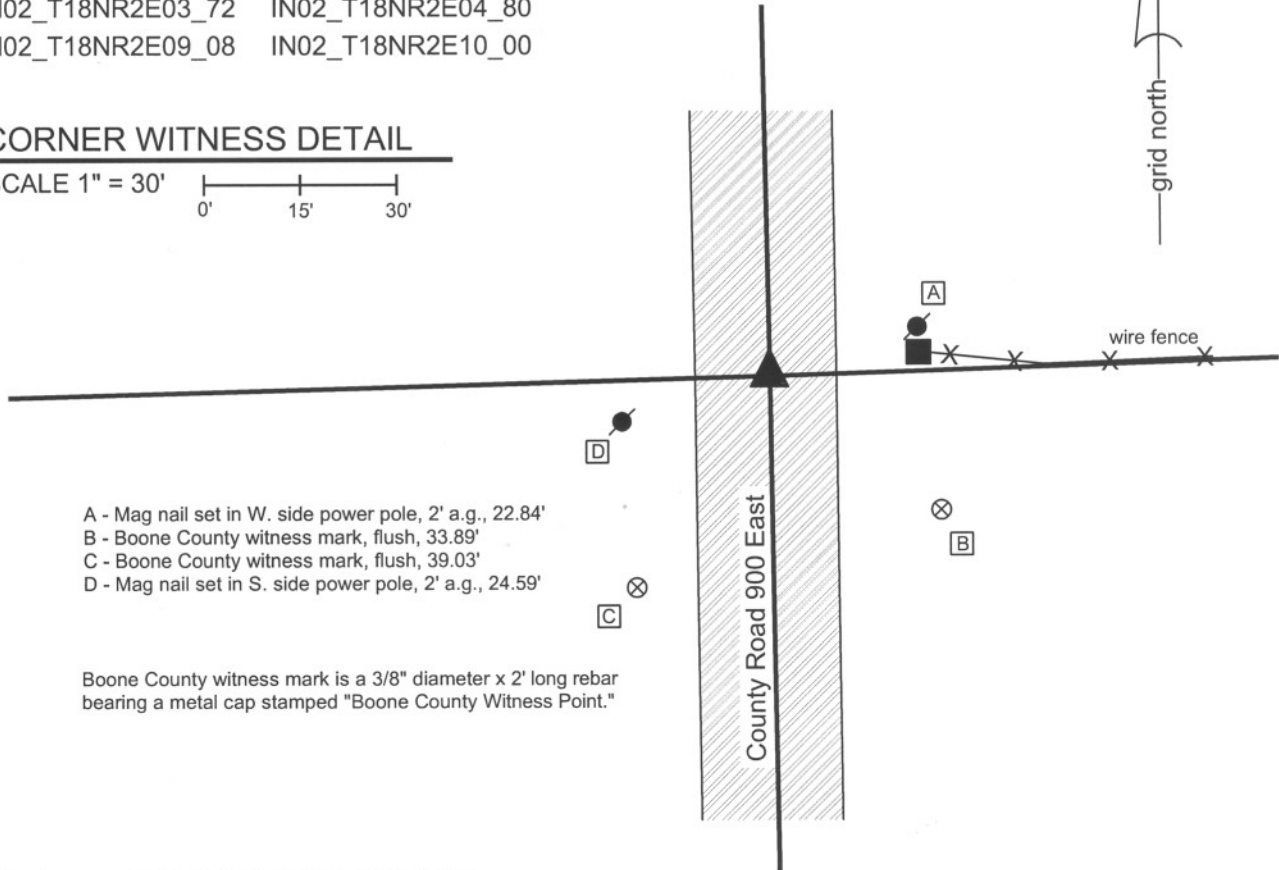
Indiana tie card references:

IN02\_T18NR2E03\_72 IN02\_T18NR2E04\_80

IN02\_T18NR2E09\_08 IN02\_T18NR2E10\_00

### CORNER WITNESS DETAIL

SCALE 1" = 30'



- A - Mag nail set in W. side power pole, 2' a.g., 22.84'
- B - Boone County witness mark, flush, 33.89'
- C - Boone County witness mark, flush, 39.03'
- D - Mag nail set in S. side power pole, 2' a.g., 24.59'

Boone County witness mark is a 3/8" diameter x 2' long rebar bearing a metal cap stamped "Boone County Witness Point."

The Harrison monument was set in place of a stone found.

A BCS record of August 16, 1892 states "Found from north beech, placed a small rock at corner but no mark on it." A BCS tie card dated June 6, 1991 shows the corner as a 5/8 inch rebar found. This corner was excavated on May 15, 2009. Prior to excavation, a 5/8 inch rebar was found in a hole in the asphalt at 8 inches below grade. Excavation revealed a stone found at 6 inches deep, slightly south and east of the rebar. The stone is embedded in the clay layer below the road, protruding approximately 1 inch out of the clay. The stone was 9 inches E-W by 7 inches N-S and 10 inches tall. No specific marks were found on the stone. The stone is in line with the fence to the east. It is noted that the stone was shallow but embedded in the clay, due to a road bed of minimal thickness. The 1876 map of Boone County does not show this section of road, indicating that this corner was not crossed by an early wagon road. This may explain the lack of depth to the road bed, as the lower portion of the road is typically of the loose sandy, gravel material which was placed on the wagon roads. This section of road does not contain this material, with asphalt over modern road stone directly over the clay layer. The stone was removed and the Harrison monument was set in its place. The rebar, removed during excavation, was 0.7 foot north and 0.2 foot east of the stone. This corner was originally established as a wood post in July, 1821.



*Kenneth E. Hedge*  
 Kenneth E. Hedge, County Surveyor

*James S. Swift*  
 James S. Swift, IN LS 20200054  
 July 14, 2010

Union Township

|                        |                         |
|------------------------|-------------------------|
| Section 4<br>T18N, R2E | Section 3<br>T18N, R2E  |
| Section 9<br>T18N, R2E | Section 10<br>T18N, R2E |

PHOTOGRAPHIC DOCUMENTATION

Date of photography: May 15, 2009

The stone, removed from the road bed and stood in the orientation in which it was found. View is of the west side of the stone, as found.



View from the north, looking across the stone and south along County Road 900 East.



For details and documentation, refer to related sheet "Section Corner Record."

# SECTION CORNER RECORD

## BOONE COUNTY SURVEYOR'S OFFICE

SE 100-950

State Plane grid coordinates NAD83 (NSRS 2007):  
 North: 1741501.00 East: 3175174.34 (U.S. survey feet)

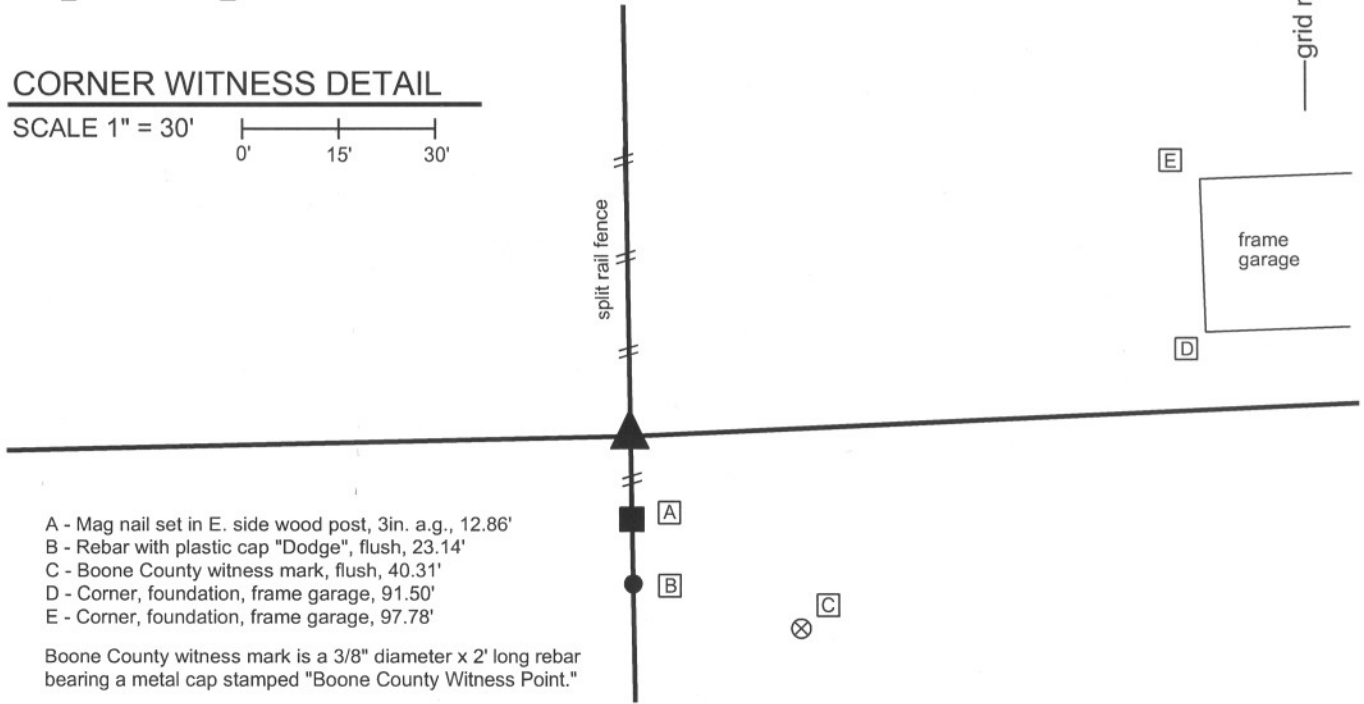
Type of monument: Harrison, 4" disk 'Section Corner'  
 Depth: flush with adjacent ground

Indiana tie card references:  
 IN02\_T19NR2E03\_76  
 IN02\_T19NR2E10\_04



### CORNER WITNESS DETAIL

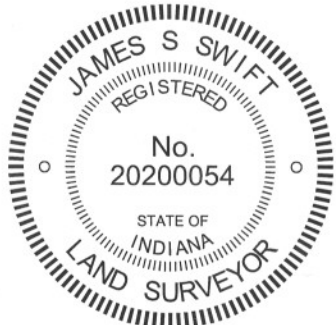
SCALE 1" = 30'  
 0' 15' 30'



- A - Mag nail set in E. side wood post, 3in. a.g., 12.86'
- B - Rebar with plastic cap "Dodge", flush, 23.14'
- C - Boone County witness mark, flush, 40.31'
- D - Corner, foundation, frame garage, 91.50'
- E - Corner, foundation, frame garage, 97.78'

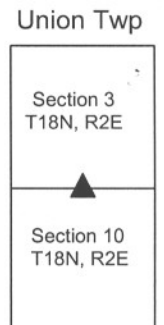
Boone County witness mark is a 3/8" diameter x 2' long rebar bearing a metal cap stamped "Boone County Witness Point."

The harrison monument was set in place of a railroad rail found.  
 A BCS record of August 16, 1892 refers to this corner as "a stake." The corner is shown as the terminal point for measurements of records from 1834, 1837, 1846 and 1853, with no description of a monument. No recent BCS tie cards were found referencing this corner.  
 this corner.  
 A railroad rail was found existing at this corner is August 2011. The source of the rail is not known, though it is most likely that it was set either by field crews from this office, or field crews working for former County Surveyor Carl Anderson in the 1970s. The position of the rail fits with adjoining deed descriptions tie to this corner and has also been held as the corner for private surveys, including a survey by Banning Engineering, P.C., dated October 14, 1999 and recorded in Survey Book 4, page 15 in the Boone County Recorder's Office. Generally probing and light excavation in the vicinity of the rail yielded no further evidence of the corner. The rail was held as marking the corner. The rail was removed and replaced with a harrison monument in the same position on August 17, 2011.  
 This corner was originally established as a wood post in 1821.



*Kenneth E. Hedge*  
 Kenneth E. Hedge, County Surveyor

*James S. Swift*  
 James S. Swift, IN LS 20200054  
 March 1, 2012





# SECTION CORNER RECORD

SE 150-900

## BOONE COUNTY SURVEYOR'S OFFICE

State Plane grid coordinates NAD83 (NSRS 2007):  
North: 1738811.42 East: 3172526.27 (U.S. survey feet)

Type of monument: Harrison, 4" disk 'Section Corner'  
Depth: One inch below adjacent road surface

Indiana tie card references:  
IN02\_T18NR2E09\_44  
IN02\_T18NR2E10\_36

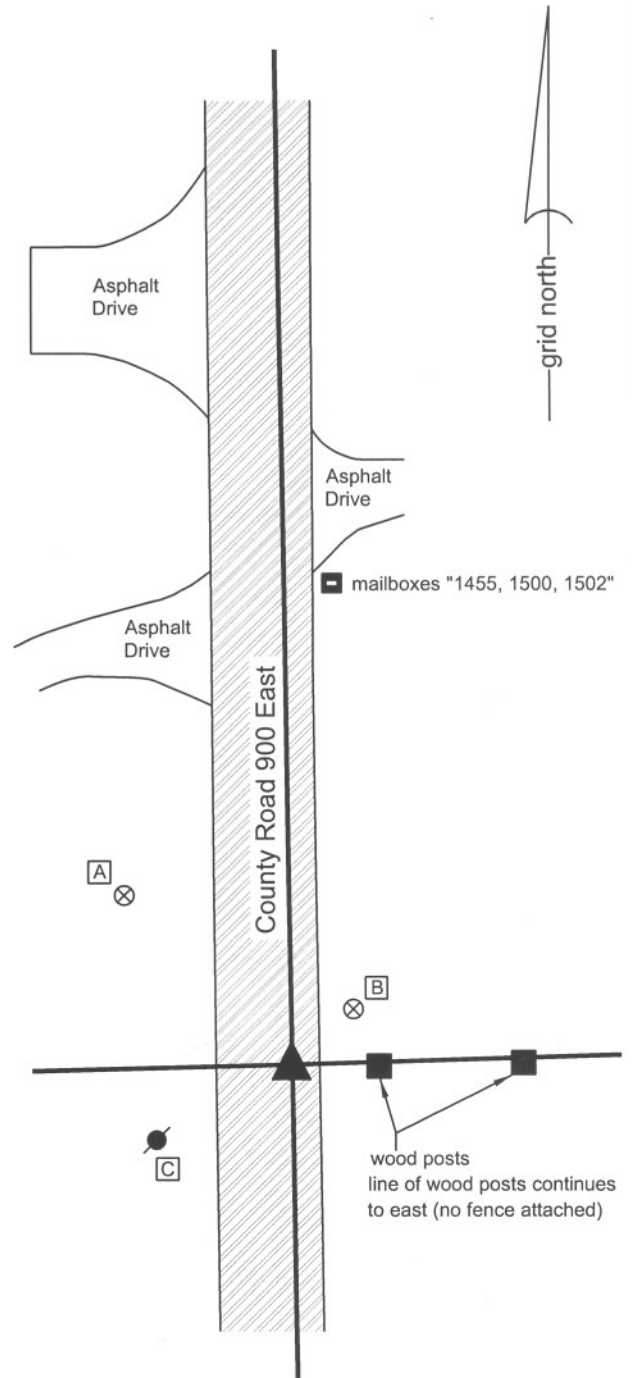
### CORNER WITNESS DETAIL

SCALE 1" = 40'  
0' 20' 40'

- A - Boone County witness mark, flush, 49.52'
- B - Boone County witness mark, flush, 17.28'
- C - Mag nail set in E. side power pole, 2.0' a.g., 31.5'

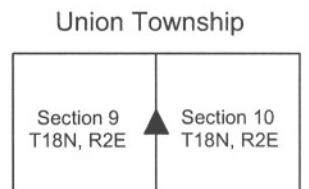
Boone County witness mark is a 3/8" diameter x 2' long rebar bearing a metal cap stamped "Boone County Witness Point."

The harrison monument was set over a stone found.  
No specific descriptions of this corner were found in the BCS "Surveyor's Record" but the corner is mentioned as the terminal point for measurements in 1840 and 1903. A BCS tie card dated October 11, 1968 states "no stone" and shows a location for the corner but does not describe what monument may have been set. This corner was excavated on May 28, 2009. Prior to excavation, a mag nail was visible in a hole in the asphalt, 1 inch below grade. Excavation revealed no other monument below the mag nail, but excavation did reveal a stone found at 16 inches below grade, north and east of the nail. With 8 inches of the stone exposed, the stone measures 10 inches E-W by 9 inches N-S. The stone is embedded in the clay layer below the road bed, protruding approximately 3 inches into the bottom of the road bed. A chiseled "+" is visible on the top of the stone. The mark appears to be slightly worn but is distinctly visible. A thin metal rod was found along the south edge of the stone. The harrison monument was set over the etched "+" on the top of the stone. The mag nail, removed during excavation, was 0.7 foot south and 0.2 foot west of the harrison and stone.  
This corner was originally established as a wood corner post in July, 1821.



*Kenneth E. Hedge*  
Kenneth E. Hedge, County Surveyor

*James S. Swift*  
James S. Swift, IN LS 20200054  
July 14, 2010



PHOTOGRAPHIC DOCUMENTATION

Date of photography: May 28, 2009

The area of excavation marked in pink paint, prior to excavation. The stone was found within this area, in the north bound lane of the road.



View of the stone as first exposed.



View of the stone more fully exposed.  
View from the east.



View of the stone wetted, showing the etched mark on top. View from the west.



For details and documentation, refer to related sheet "Section Corner Record."

# SECTION CORNER RECORD

# SE 150-1000

## BOONE COUNTY SURVEYOR'S OFFICE

State Plane grid coordinates NAD83 (2011):

CORNER: North: 1738982.88 East: 3177930.92 (U.S. survey feet)

WITNESS: North: 1738983.43 East: 3177930.92 (U.S. survey feet)

CORNER: Wood corner post

WITNESS: 5/8 inch rebar with metal cap stamped 'Boone County Surveyor'

Indiana tie card references:

IN02\_T18NR2E11\_36 IN02\_T18NR2E12\_44

### CORNER WITNESS DETAIL

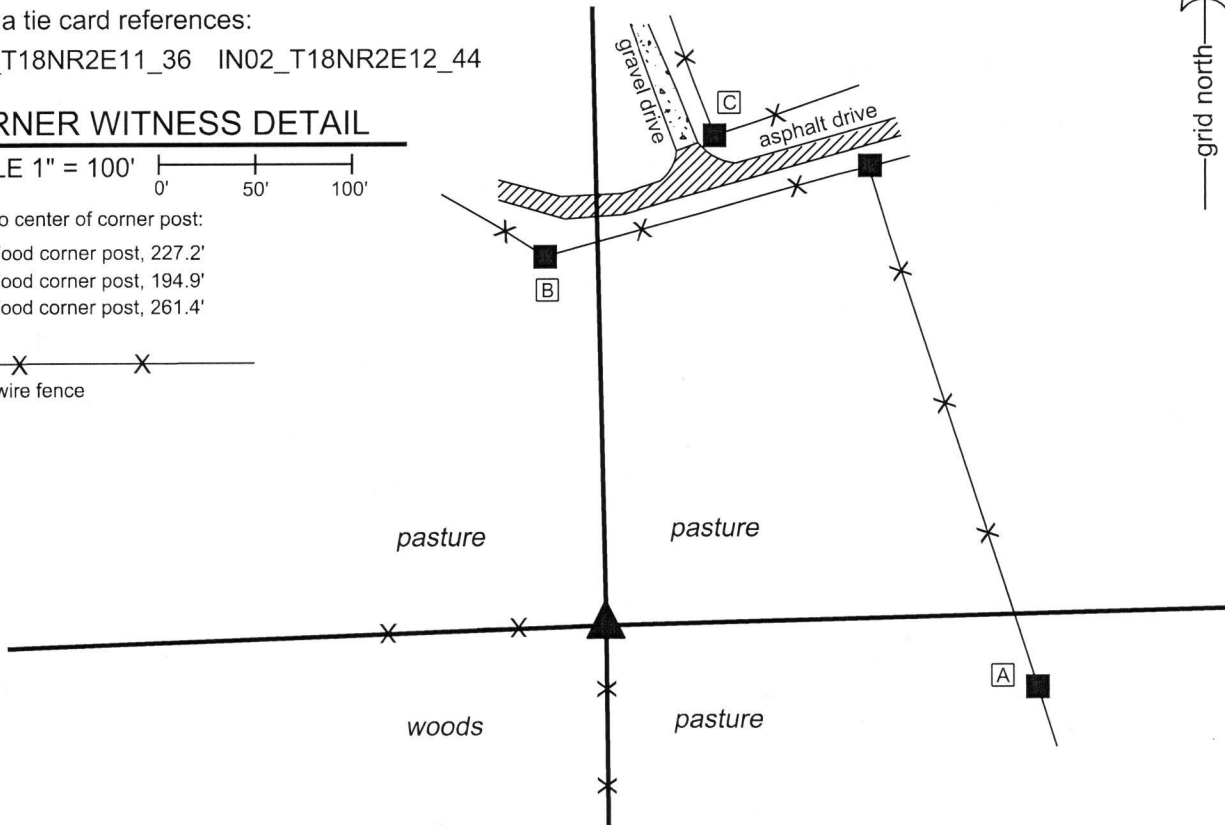
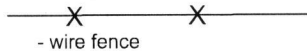
SCALE 1" = 100'

Ties to center of corner post:

A - Wood corner post, 227.2'

B - Wood corner post, 194.9'

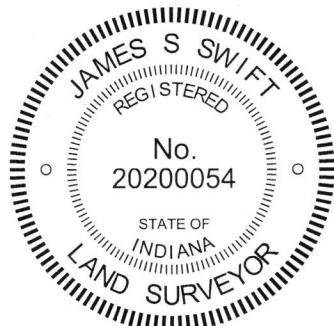
C - Wood corner post, 261.4'



The wood corner post was found in place and held as the corner. The rebar with Boone County Surveyor cap is intended as a witness to the corner. A BCS record of September 28 & October 14, 1891 states, with respect to this corner, "Found by intersecting the Section with the line from West through Sect. 10. Set rock marked + on top & 1/4 on S side 20.14.11 at corner." Neither recent BCS tie cards nor surveys recorded in the Office of the Boone County Recorder were found referencing the corner.

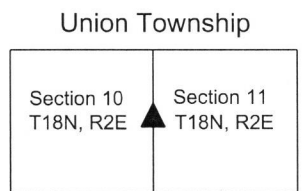
This corner was excavated on May 3, 2019. Prior to excavation, a wood corner post was found at the intersection of standing fences to the south and west. Existing wood braces were observed on the south and west sides of the post. Fencing was observed cut-off toward the north and the notch of a former brace was observed on the north side of the post. Gate hardware was observed on the east side of the post. The position of the post is between 5 and 15 feet east of a straight line connecting the corner to the south (see BCS Corner SE 200-1000) and various evidence of the corner to the north (BCS Corner SE 100-1000, not fully perpetuated). Manual excavation and probing around the post and along the fence to the west revealed no further evidence of the corner. No stones or other hard objects were found. The stone called in the 1891 record was not found. The post, clearly being the old corner post for fences in three cardinal directions and a gate in the other, was accepted as representing the best available evidence of the corner. The fencing to the south and west of the post appear to remain in use as a livestock enclosure. The post was left in place and a 30 inch length of 5/8 inch rebar was set, partially in concrete, 0.25 of a foot north of the north edge of the post. The rebar is capped with a metal cap stamped 'Boone County Surveyor.' The center of the post is held as the corner and the rebar is intended as a witness to the corner.

This corner was originally established in 1821.



Kenneth E. Hedge, County Surveyor

James S. Swift, IN LS 20200054  
June 26, 2019





# SECTION CORNER RECORD

SE 200-900

## BOONE COUNTY SURVEYOR'S OFFICE

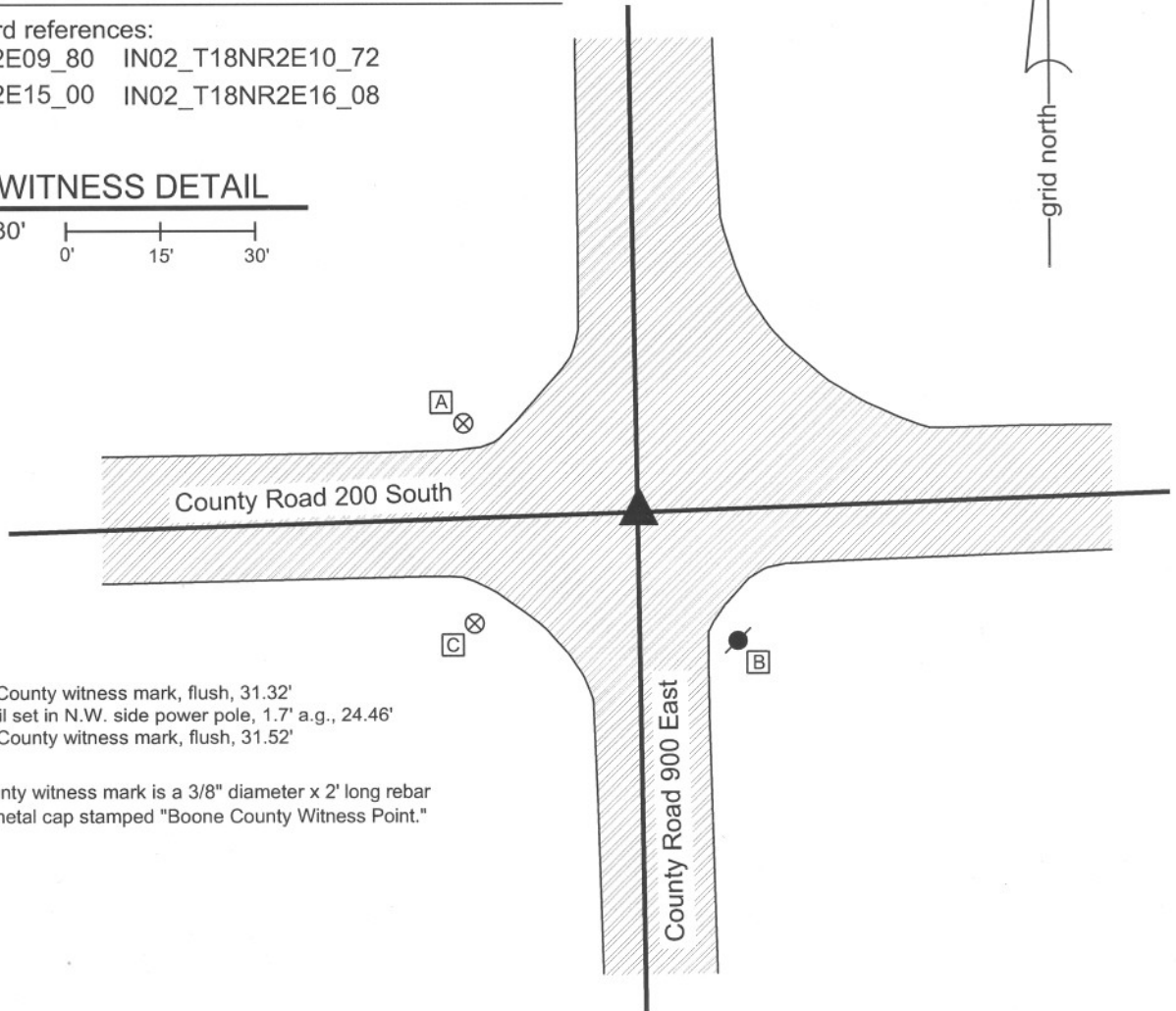
State Plane grid coordinates NAD83 (NSRS 2007):  
North: 1736179.21 East: 3172574.78 (U.S. survey feet)

Type of monument: Harrison, 4" disk 'Section Corner'  
Depth: One inch below adjacent road surface

Indiana tie card references:  
IN02\_T18NR2E09\_80 IN02\_T18NR2E10\_72  
IN02\_T18NR2E15\_00 IN02\_T18NR2E16\_08

### CORNER WITNESS DETAIL

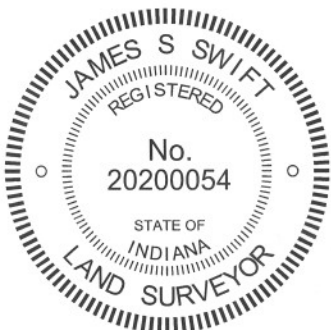
SCALE 1" = 30'  
0' 15' 30'



- A - Boone County witness mark, flush, 31.32'
- B - Mag nail set in N.W. side power pole, 1.7' a.g., 24.46'
- C - Boone County witness mark, flush, 31.52'

Boone County witness mark is a 3/8" diameter x 2' long rebar bearing a metal cap stamped "Boone County Witness Point."

The harrison monument was set in place of a railroad rail found. A BCS record on October 24, 1892 states "found both corner rocks + wit." (No record was found for any known corner stones prior to 1892). A BCS tie card dated October 11, 1968 states "no stone." This corner was excavated on June 2, 2008. Prior to excavation, a mag nail was visible at the surface. Excavation yielded a 5/8 inch rebar with a metal cap at 7 inches. Further excavation yielded a railroad rail at 9 inches. The rebar was situated against the south side of the rail. Both monuments were below and slightly north of the mag nail. Further excavation of an area 4.5 feet N-S by 8 feet E-W extending 4.5 feet west and 2.5 feet north of the rail yielded no more monuments. The record stone was not found. The harrison was set in the position of the railroad rail (removed during excavation), 0.14 of a foot north of the position of the mag nail (also removed during excavation). This corner was originally established as wood post in July, 1821.



*Kenneth E. Hedge*  
Kenneth E. Hedge, County Surveyor

*James S. Swift*  
James S. Swift, IN LS 20200054  
March 18, 2009, Revised April 30, 2012

Union Township

|                         |                         |
|-------------------------|-------------------------|
| Section 9<br>T18N, R2E  | Section 10<br>T18N, R2E |
| Section 16<br>T18N, R2E | Section 15<br>T18N, R2E |

# SECTION CORNER RECORD

SE 200-950

## BOONE COUNTY SURVEYOR'S OFFICE

State Plane grid coordinates NAD83 (NSRS 2007):

North: 1736274.29 East: 3175265.80 (U.S. survey feet)

Type of monument: Harrison, 4" disk 'Section Corner'

Depth: flush with adjacent with road surface

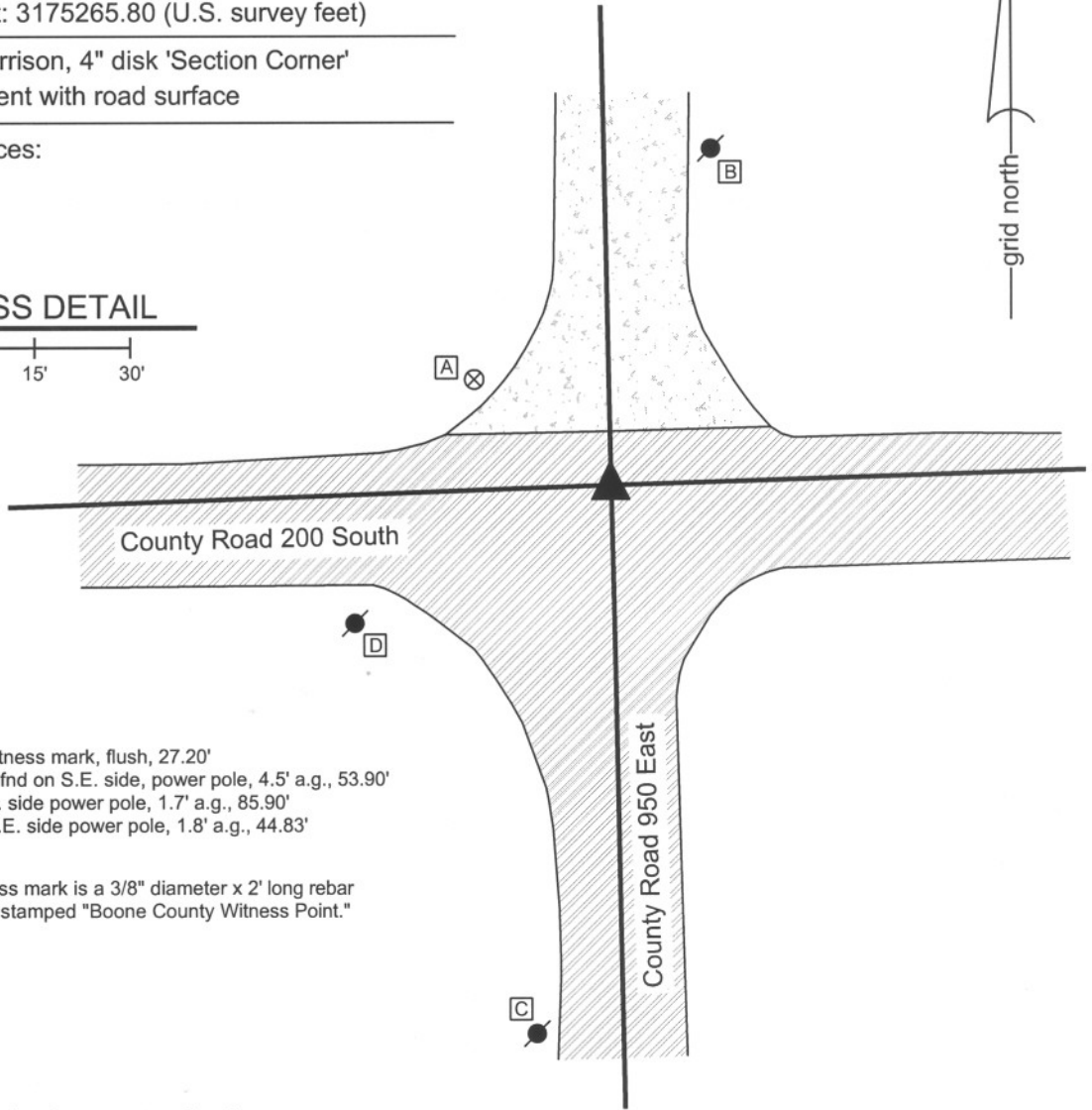
Indiana tie card references:

IN02\_T18NR2E10\_76

IN02\_T18NR2E15\_04

### CORNER WITNESS DETAIL

SCALE 1" = 30'  
0' 15' 30'



- A - Boone County witness mark, flush, 27.20'
- B - Nail in bottle cap fnd on S.E. side, power pole, 4.5' a.g., 53.90'
- C - Mag nail set in N. side power pole, 1.7' a.g., 85.90'
- D - Mag nail set in N.E. side power pole, 1.8' a.g., 44.83'

Boone County witness mark is a 3/8" diameter x 2' long rebar bearing a metal cap stamped "Boone County Witness Point."

The harrison monument was set directly over a stone found.

A undated tie card which has been on file for this corner for many years is erroneously labled. The tie card on file was actually for the corner 1/4 mile to the west. The subject corner is represented on field notes dated June 1, 1974 but no tie card was found derived from these notes. The 1974 field notes call for a stone found. This corner was excavated on April 24, 2008. Prior to excavation two monuments were visible in approximate center of the intersection, one being a 5/8" rebar six inches below grade in a hole in the asphalt and the other being a mag nail 6 feet south of the rebar. The rebar fit with the remaining 1974 tie, being a nail in a bottle cap driven in a power pole in the northeast quadrant of the intersection. Excavation in the area of the rebar yielded a stone found at 4 feet deep. The stone is embedded in the clay below substantial amounts of fill. The harrison was set directly over the stone in the position formerly occupied by the rebar.

This corner was originally established as a wood post in July, 1821.

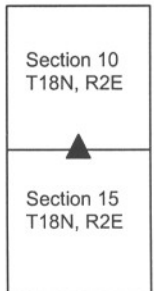


*Kenneth E. Hedge*  
 Kenneth E. Hedge, County Surveyor

*James S. Swift*  
 James S. Swift, IN LS 20200054

March 11, 2009, revised July 14, 2010

Union Township





PHOTOGRAPHIC DOCUMENTATION

Date of photography: April 24, 2008

1/2 rebar situated against railroad rail. Both monumnets were directly over the stone.



Corner stone - overhead view from North.



Corner stone - overhead view from West.



View of top of hole and County Road 200 South to the East.



Close up of the stone.



For details and documentation, refer to related sheet "Section Corner Record."

# SECTION CORNER RECORD

SE 200-1000

## BOONE COUNTY SURVEYOR'S OFFICE

State Plane grid coordinates NAD83 (NSRS 2007):

North: 1736356.30 East: 3177959.20 (U.S. survey feet)

Type of monument: Harrison, 4" disk 'Section Corner'

Depth: One inch below adjacent road surface

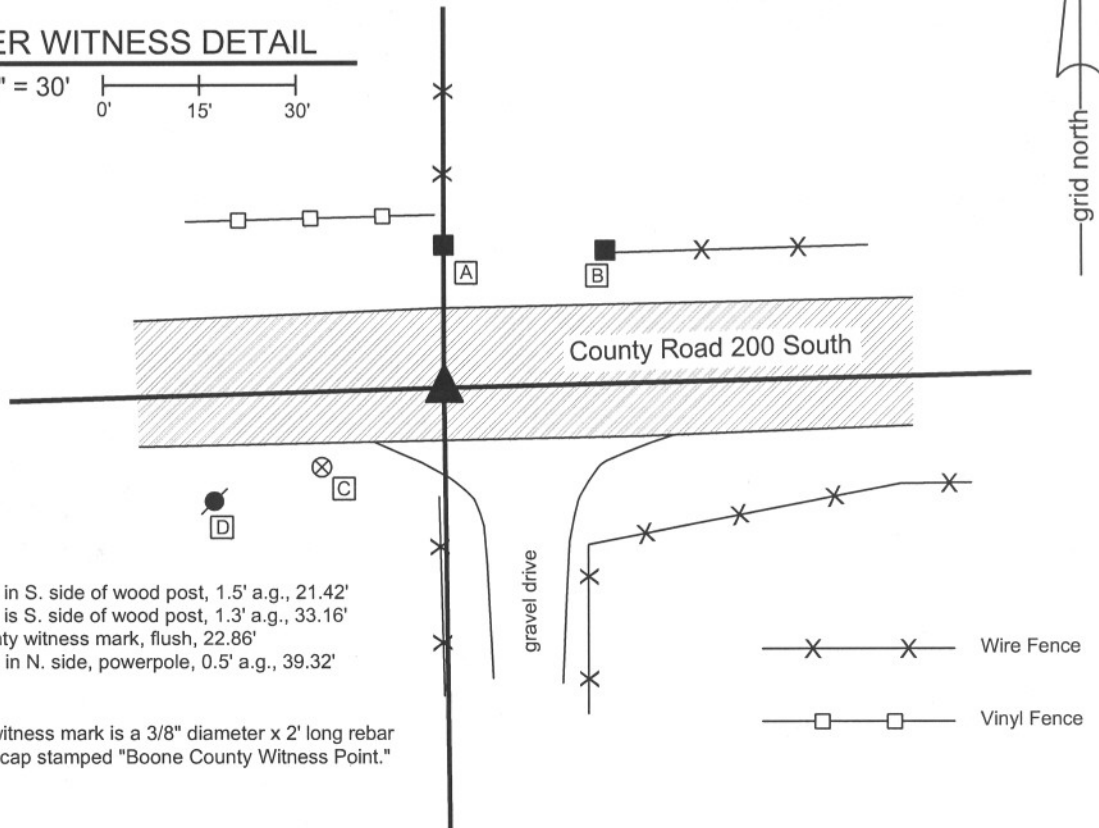
Indiana tie card references:

IN02\_T18NR2E10\_80 IN02\_T18NR2E11\_72

IN02\_T18NR2E14\_00 IN02\_T18NR2E15\_08

### CORNER WITNESS DETAIL

SCALE 1" = 30'



- A - Mag nail set in S. side of wood post, 1.5' a.g., 21.42'
- B - Mag nail set in S. side of wood post, 1.3' a.g., 33.16'
- C - Boone County witness mark, flush, 22.86'
- D - P.K. nail fnd in N. side, powerpole, 0.5' a.g., 39.32'

Boone County witness mark is a 3/8" diameter x 2' long rebar bearing a metal cap stamped "Boone County Witness Point."

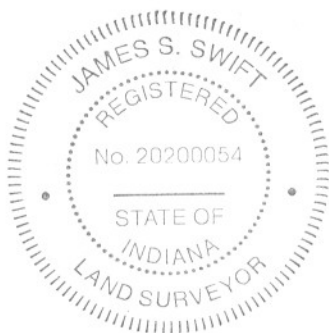
The harrison monument was set in the position of a railroad rail found.

A BCS record of April 20, 1883 states "Reestab. on line with e & f Sec 11, and D Sec 15 & q Sec. 11. Stone 20x16x16 marked + on top."

A BCS tie card of July 2, 1967 states "stone found." Prior to excavation the visible monument was a 5/8 inch rebar 6 inches deep in a hole in the asphalt. This rebar fit generally well with the 1967 ties. This corner was excavated on April 24, 2008. Excavation yielded a railroad rail at 12 inches.

The rebar was against the south side of the rail. Both monuments were removed. Further excavation yielded no more monuments. The stone was not found and it is considered most likely that the stone was removed and the rail installed in 1967. Although the no specific documentation was found for the rail, it is known that removal of the stone and installation of a railroad rail was a common practice of field crews from this office in that time frame.

The rail was replaced with a harrison monument. This corner was originally established as a wood post in July, 1821.



*Kenneth E. Hedge*  
 Kenneth E. Hedge, County Surveyor

*James S. Swift*  
 James S. Swift, IN LS 20200054

March 11, 2009

Union Township

|                         |                         |
|-------------------------|-------------------------|
| Section 10<br>T18N, R2E | Section 11<br>T18N, R2E |
| Section 15<br>T18N, R2E | Section 14<br>T18N, R2E |