

# SECTION CORNER RECORD

SW 100-200

## BOONE COUNTY SURVEYOR'S OFFICE

State Plane grid coordinates NAD83 (2011):

North: 1740182.53 East: 3114221.01 (U.S. survey feet)

Type of monument: 5/8-inch diameter rebar in concrete with aluminum cap stamped, 'Boone County Surveyor'

Depth: Three inches above surrounding ground at edge of ditch

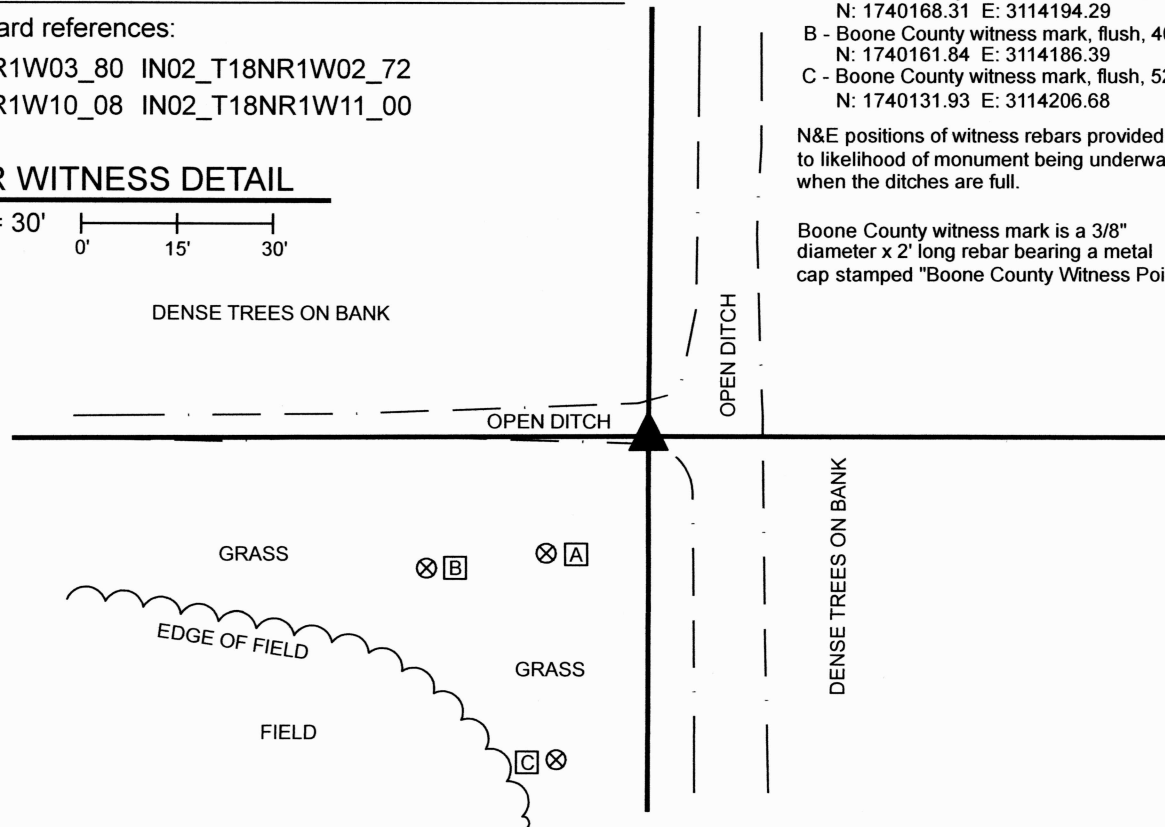
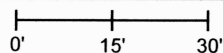
Indiana tie card references:

IN02\_T18NR1W03\_80 IN02\_T18NR1W02\_72

IN02\_T18NR1W10\_08 IN02\_T18NR1W11\_00

### CORNER WITNESS DETAIL

SCALE 1" = 30'



- A - Boone County witness mark, flush, 24.3'  
N: 1740168.31 E: 3114194.29
- B - Boone County witness mark, flush, 40.3'  
N: 1740161.84 E: 3114186.39
- C - Boone County witness mark, flush, 52.6'  
N: 1740131.93 E: 3114206.68

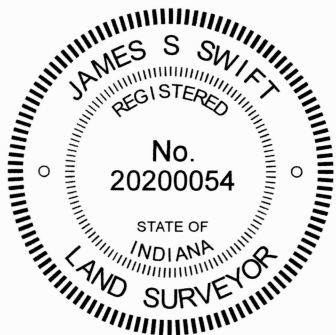
N&E positions of witness rebars provided due to likelihood of monument being underwater when the ditches are full.

Boone County witness mark is a 3/8" diameter x 2' long rebar bearing a metal cap stamped "Boone County Witness Point."

The rebar with Boone County Cap was set in place of a rebar found.

No specific descriptions of this corner were found in the BCS Surveyor's Record beyond the original establishment of the corner as a wood post in 1820. A rebar with 'Woolpert' cap was found per the position of the corner as shown on an unrecorded survey by Woolpert, dated October 12, 2020, project number 81102, certified by William L. Dougherty, LS No. 80880038. No surveys recorded in the Office of the Boone County Recorder were found which show a different position for this corner. The rebar was set by Woolpert in 2020 as part of a survey of the land to the southeast of the corner based on information from previous surveys in the area by that company, dating to the mid-1990s. The position of the rebar was held by Woolpert to define the westerly terminus of the north line of the northwest quarter of Section 11.

This corner falls on the south edge of an east-west open ditch, in the immediate vicinity of the intersection of said ditch with a larger north-south ditch, well within the area of excavation associated with the ditches. No ancient evidence, such as a post or corner stone, is likely to be present, given the obvious excavation in the area. The position of the rebar falls approximately 9 feet north and 2 feet west of a theoretical, computed position of the corner, based on evidence of a standing fence to the south and the relative locations of other, adjacent corners. With no local evidence of the corner, due to the presence of the ditches to the north, south and west, the position held by Woolpert for purposes of the survey of land to the east was held as the position of the corner. The rebar with Woolpert cap was removed on June 16, 2023 and replaced with a 30-inch length of rebar set in concrete in the same position.



*Carol Cunningham*  
 Carol Cunningham, County Surveyor

*James S. Swift*  
 James S. Swift, IN LS 20200054  
 June 21, 2023

Center Township

Section 3 T18N, R1W	Section 2 T18N, R1W
Section 10 T18N, R1W	Section 11 T18N, R1W

# SECTION CORNER RECORD

SW 100-250

## BOONE COUNTY SURVEYOR'S OFFICE

State Plane grid coordinates NAD83 (2011):

North: 1740171.53 East: 3111563.87 (U.S. survey feet)

Type of monument: Harrison, 4" disk 'Section Corner'

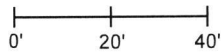
Depth: three inches above adjacent ground

Indiana tie card references:

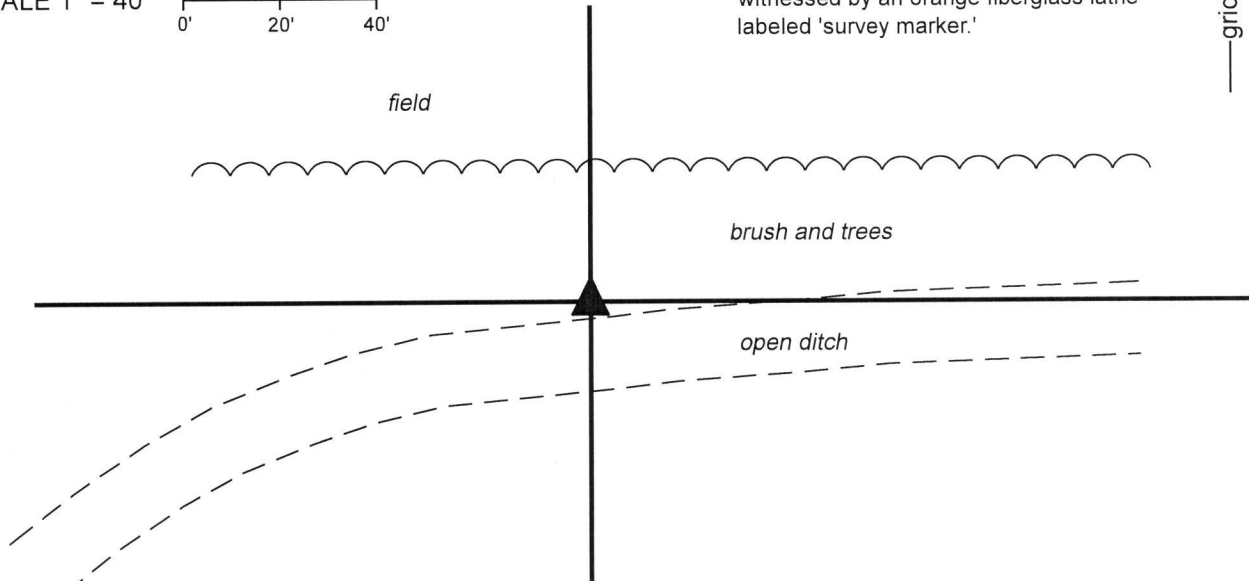
IN02\_T18NR1W03\_76 IN02\_T18NR1W10\_04

### CORNER WITNESS DETAIL

SCALE 1" = 40'



The Harrison monument is located 0.3' south of the south edge of an existing wood corner post on the north bank of an existing open ditch. The monument is witnessed by an orange fiberglass lathe labeled 'survey marker.'



The Harrison monument was set over a stone found.

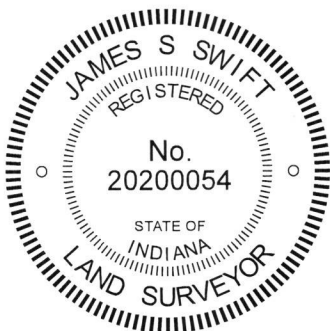
A BCS record dated March 25, 1892 states, with respect to this corner, "Reestablished by running lines from South, North, and West. Set rock mk + 17.13.10 at corner."

Neither recent BCS tie cards nor recorded surveys were found referencing this corner.

Excavation was performed at this corner on November 6, 2019. Prior to excavation, a wood corner post with fencing to the west and north (fence does not extend far north) and cut to the south, with a brace to the west and a brace notch to the south, was found on the north edge of an existing open ditch. The post appears to be ancient and the evidence of fencing and bracing to the south indicates that it pre-dates significant excavation of the open ditch.

Analysis of the position of the post with respect to evidence of the center corners of section 3 (found monument in center of County Road 50 South) and section 10 (computed from westerly and southerly extensions of existing fencing) indicates that the position of the post works remarkably well with distances referenced in the 1892 record. Excavation in the immediate vicinity of the post revealed a stone found at 12 inches deep at the southeast edge of the post. The stone did not appear to be a brace rock but did not match the dimensions called in the 1892 record. Further excavation revealed the stone called in the 1892 record at 14 inches deep adjacent to the south edge of the post. With the top 8 inches of the stone exposed, it measured 13 inches N-S by 11 inches E-W in a triangular shape, with the points of the triangle to the south, east and west. The north edge of the stone was exposed to 13 inches from the top and observed to be vertical. Probing along the remainder of the north edge of the stone indicated that the full height is approximately 17 inches tall. A vague mark was observed on the top of the stone, but not positively confirmed as the "+" mark called in the record. The stone was accepted as being the same monument described in the 1892 record. The stone was left in place and a Harrison monument was set over the high point of the stone, near the north edge.

This corner was originally established in 1820.



*Kenneth E. Hedge*  
 Kenneth E. Hedge, County Surveyor

*James S. Swift*  
 James S. Swift, IN LS 20200054

December 3, 2019

Center Township

Section 3  
T18N, R1W

Section 10  
T18N, R1W

# SECTION CORNER RECORD

# SW 100-300

## BOONE COUNTY SURVEYOR'S OFFICE

State Plane grid coordinates NAD83 (2011):

North: 1740169.50 East: 3108945.60 (U.S. survey feet)

Type of monument: Harrison, 4" disk 'Section Corner'

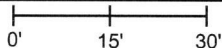
Depth: Six inches below adjacent gravel road surface

Indiana tie card references:

IN02\_T18NR1W04\_80 IN02\_T18NR1W03\_72

IN02\_T18NR1W09\_08 IN02\_T18NR1W10\_00

### CORNER WITNESS DETAIL

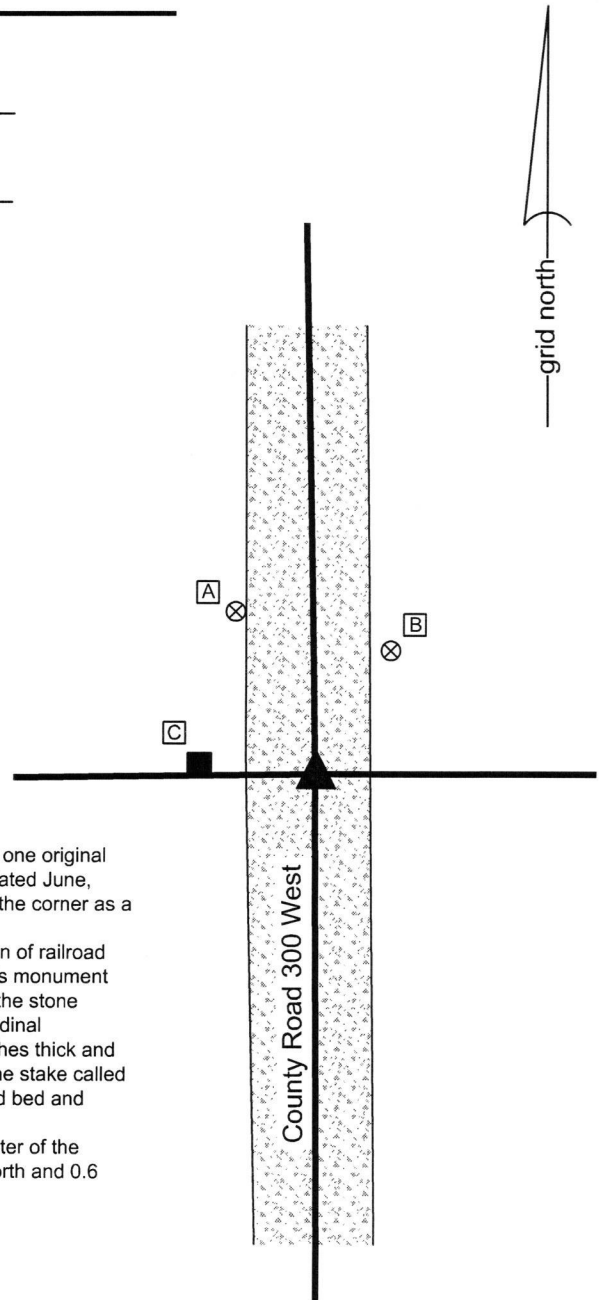
SCALE 1" = 30' 

A - Boone County witness mark, flush, 28.1'

B - Boone County witness mark, flush, 22.5'

C - Mag nail set in S. side wood post, 2' a.g., 17.3'

Boone County witness mark is a 3/8" diameter x 2' long rebar bearing a metal cap stamped "Boone County Witness Point."



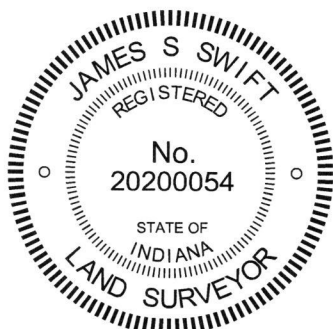
The Harrison monument was set in place of a stone found.

A BCS record dated April 16, 1866 states, with respect to this corner, Re-est. from one original bearing tree. Rock 12,10,5 marked "S10. Stake drove under it." A BCS tie card dated June, 1970 calls the corner "No Stone." A BCS tie card dated December 9, 1994 shows the corner as a rebar.


This corner was excavated on June 17, 2016. Prior to excavation, a vertical section of railroad rail was found at 6 inches deep in the gravel road. It is believed most likely that this monument was set in association with the creation of the 1970 tie card. Excavation revealed the stone described in the 1866 record at 18 inches deep. The stone was not oriented in cardinal directions. It was measured to be 12 inches NW-SE by 10 inches NE-SW by 5 inches thick and had a distinct and clear etched mark of "10" the top of the stone. No evidence of the stake called for in the 1866 record was found, though it is noted that the material below the road bed and below the stone is quite wet clay. Any stake may have long since rotted.

The stone was removed and a Harrison monument was set in place of the top, center of the stone as found. The railroad rail, removed during excavation, had been 2.6 feet north and 0.6 foot east of the point held as the corner.

This corner was originally established as a wood post in 1820.



  
 Kenneth E. Hedge, County Surveyor

  
 James S. Swift, IN LS 20200054  
 March 23, 2017

Center Township

Section 4 T18N, R1W	Section 3 T18N, R1W
Section 9 T18N, R1W	Section 10 T18N, R1W

An arrow points to the center of the four sections shown in the table.



PHOTOGRAPHIC DOCUMENTATION

Date of photography: June 17, 2016

The stone as found in the road.



The stone removed from the road.



View from above the stone looking at the wood post (covered with ivy) on the west side of County Road 300 West.



View from the north looking across the stone and south along County Road 300 West.



For details and documentation, refer to related sheet "Section Corner Record."



# SECTION CORNER RECORD

## BOONE COUNTY SURVEYOR'S OFFICE

SW 150-200

State Plane grid coordinates NAD83 (2011):

North: 1737536.06 East: 3114216.16 (U.S. survey feet)

Type of monument: 5/8 inch rebar with metal cap

Depth: 10 inches below adjoining tilled ground

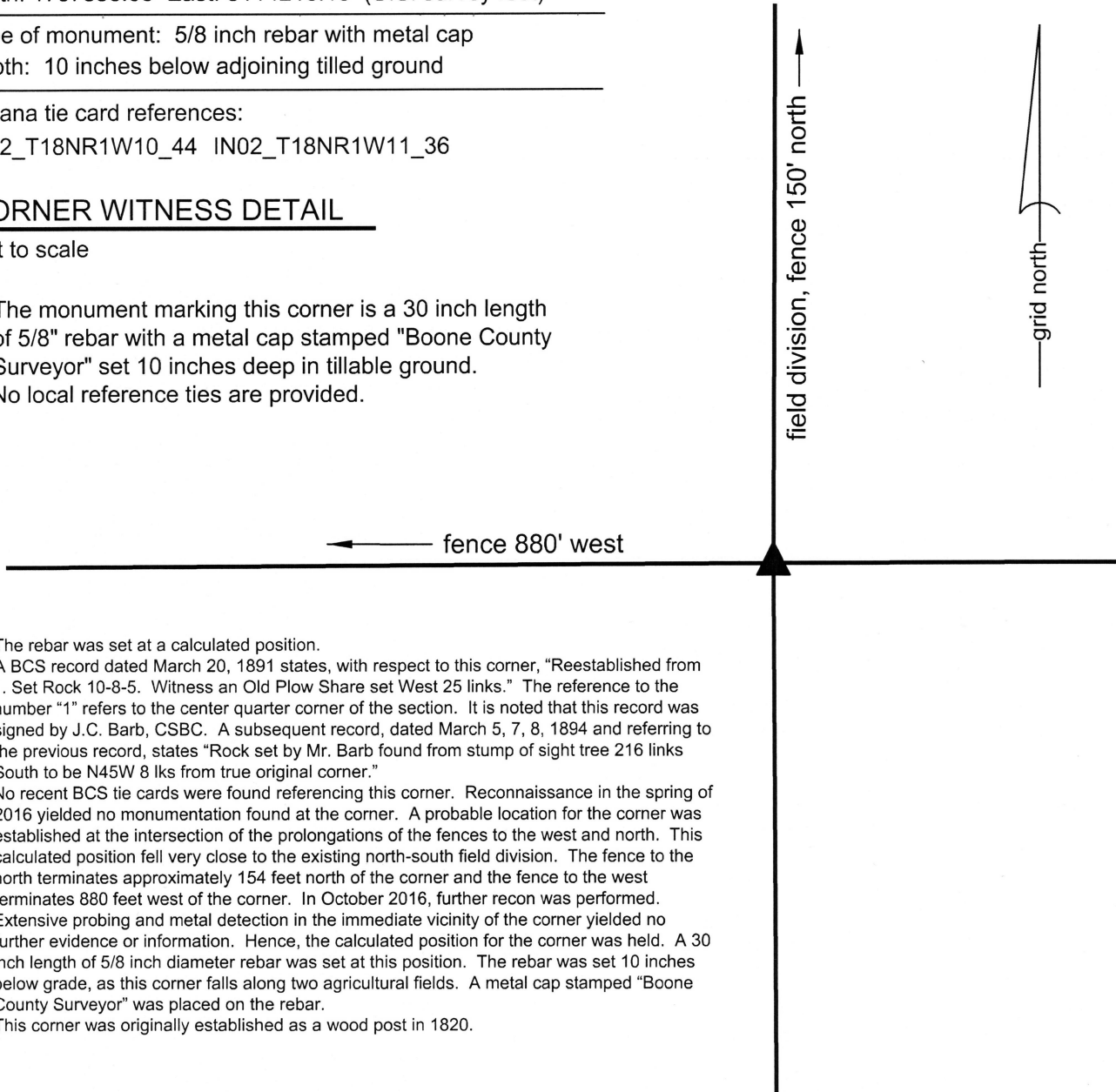
Indiana tie card references:

IN02\_T18NR1W10\_44 IN02\_T18NR1W11\_36

### CORNER WITNESS DETAIL

Not to scale

The monument marking this corner is a 30 inch length of 5/8" rebar with a metal cap stamped "Boone County Surveyor" set 10 inches deep in tillable ground. No local reference ties are provided.

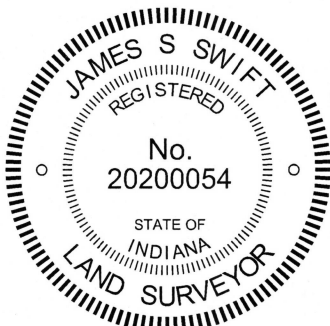


The rebar was set at a calculated position.


A BCS record dated March 20, 1891 states, with respect to this corner, "Reestablished from 1. Set Rock 10-8-5. Witness an Old Plow Share set West 25 links." The reference to the number "1" refers to the center quarter corner of the section. It is noted that this record was signed by J.C. Barb, CSBC. A subsequent record, dated March 5, 7, 8, 1894 and referring to the previous record, states "Rock set by Mr. Barb found from stump of sight tree 216 links South to be N45W 8 lks from true original corner."

No recent BCS tie cards were found referencing this corner. Reconnaissance in the spring of 2016 yielded no monumentation found at the corner. A probable location for the corner was established at the intersection of the prolongations of the fences to the west and north. This calculated position fell very close to the existing north-south field division. The fence to the north terminates approximately 154 feet north of the corner and the fence to the west terminates 880 feet west of the corner. In October 2016, further recon was performed. Extensive probing and metal detection in the immediate vicinity of the corner yielded no further evidence or information. Hence, the calculated position for the corner was held. A 30 inch length of 5/8 inch diameter rebar was set at this position. The rebar was set 10 inches below grade, as this corner falls along two agricultural fields. A metal cap stamped "Boone County Surveyor" was placed on the rebar.

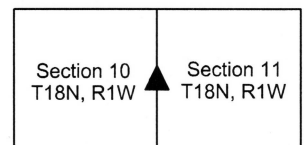
This corner was originally established as a wood post in 1820.



  
Kenneth E. Hedge, County Surveyor

  
James S. Swift, IN LS 20200054  
March 23, 2017

Center Township



# SECTION CORNER RECORD

SW 150-300

## BOONE COUNTY SURVEYOR'S OFFICE

State Plane grid coordinates NAD83 (2011):

North: 1737500.03 East: 3108957.80 (U.S. survey feet)

Type of monument: Harrison, 4" disk 'Section Corner'

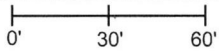
Depth: Six inches below adjacent gravel road surface

Indiana tie card references:

IN02\_T18NR1W09\_44 IN02\_T18NR1W10\_36

### CORNER WITNESS DETAIL

SCALE 1" = 60'



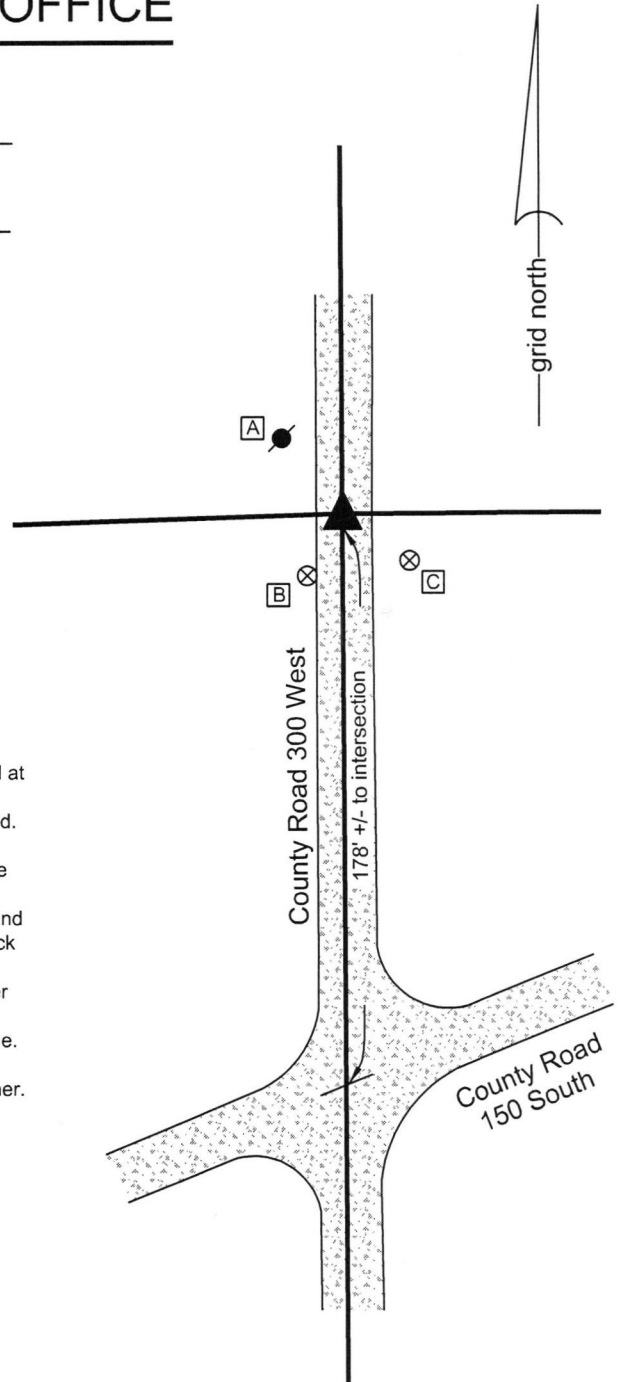
- A - Mag nail set in E. side power pole, 2' a.g., 28.6'
- B - Boone County witness mark, flush, 22.1'
- C - Boone County witness mark, flush, 25.7'

Boone County witness mark is a 3/8" diameter x 2' long rebar bearing a metal cap stamped "Boone County Witness Point."

The Harrison monument was set in place of a stone found.

A BCS record of April 16, 1866 states, with respect to this corner, "Reest. Rock 20.12.10 marked "+" on top. Brick bat under it + on top and 1/4 S. on under it." A BCS tie card dated June, 1970 calls the corner "no stone."

This corner was excavated on June 20, 2016. Prior to excavation, a rebar was found at 2 inches deep in the gravel roadway. Excavation revealed a stone found at 2 inches deep. The stone was vertical and embedded in the clay layer below the road with the top protruding approximately 4 inches into the bottom of the road bed. The stone was 20 inches tall by 12 inches N-S by 10 inches E-W, matching the dimensions described in the 1866 record. No specific marks were detected on the top of the stone, though it is noted that the shallow depth of the rock would likely subject the top to damage by road grading equipment. The stone was removed and several pieces of brick were found below. It appeared in the field that a larger brick had broken into several pieces. And etched "+" mark was visible on one of the pieces of brick and parts of the "S" mark was found on two others. The top, center of the stone, as originally found, was held as marking the corner. The stone and brick pieces were removed and a Harrison monument was set in place of the stone. The rebar, removed during excavation, had been situated along the west edge of the stone, specifically 0.2 foot south and 0.8 foot west of the point held as the corner. This corner was originally established as a wood post in 1820.



*Kenneth E. Hedge*  
Kenneth E. Hedge, County Surveyor

*James S. Swift*  
James S. Swift, IN LS 20200054  
March 23, 2017

Center Township

Section 9 T18N, R1W	Section 10 T18N, R1W
------------------------	-------------------------



PHOTOGRAPHIC DOCUMENTATION

Date of photography: June 20, 2016

The stone and rebar as originally exposed.



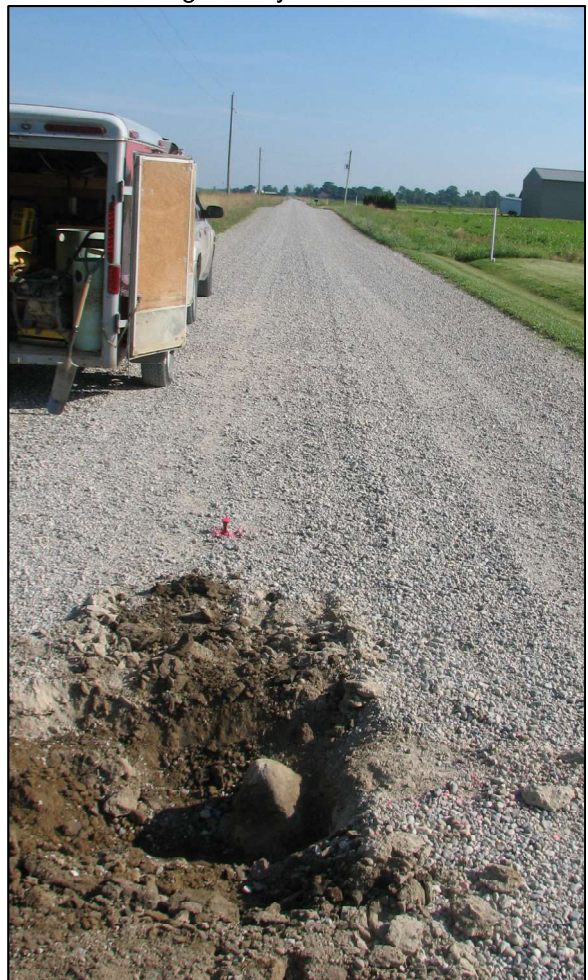
View from the east, looking across the stone to the wood post on the west side of C.R. 300 West.



The stone removed from the road bed, shown with fragments of brick found under the stone.



View from the south, looking across the stone and north along County Road 300 West.



Fragments of brick found under the stone. The + and S marks are visible on these pieces of brick.



For details and documentation, refer to related sheet "Section Corner Record."