

# SECTION CORNER RECORD

SW 700-800

## BOONE COUNTY SURVEYOR'S OFFICE

State Plane grid coordinates NAD83 (2011):

North: 1708157.94 East: 3082753.550 (U.S. survey feet)

Type of monument: Harrison, 4" disk 'Section Corner'

Depth: One inch below adjacent road surface

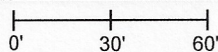
Indiana tie card references:

IN02\_T18NR2W36\_80 IN02\_T18NR1W31\_72

IN02\_T18NR2W36\_08 IN02\_T18NR1W31\_00

### CORNER WITNESS DETAIL

SCALE 1" = 60'

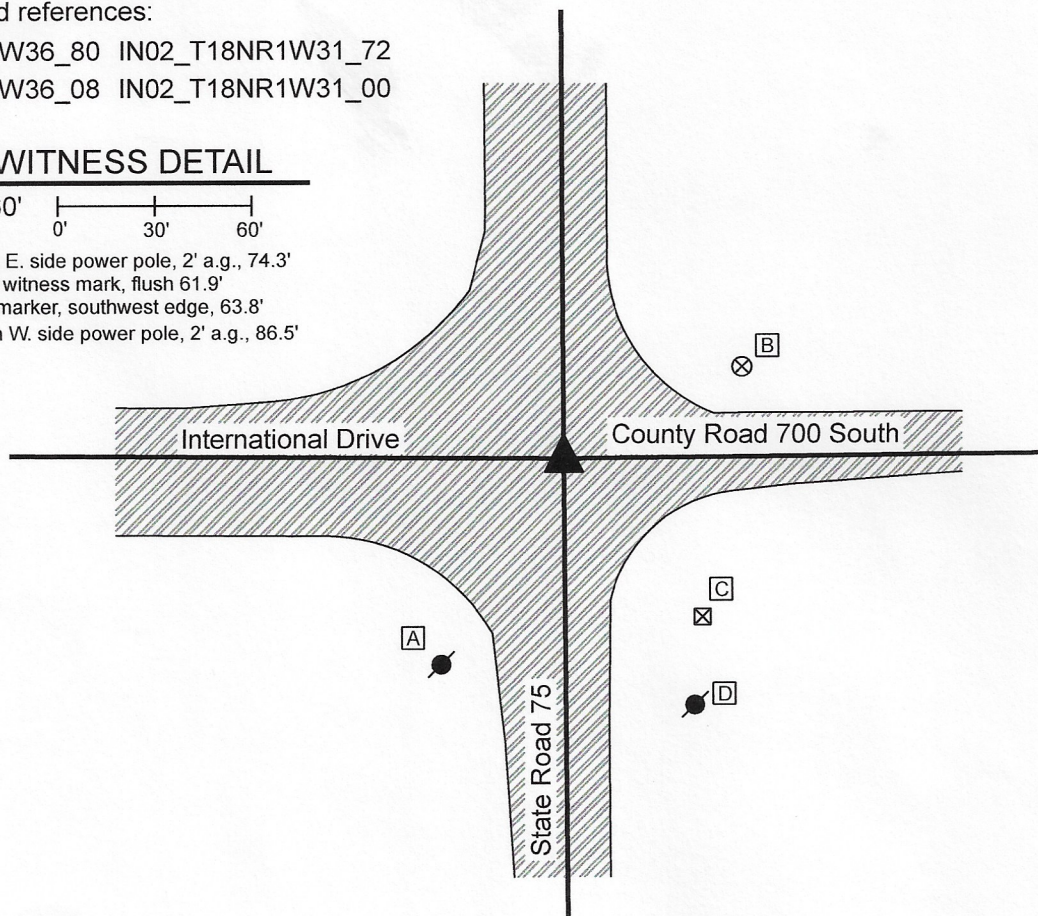


A - Mag nail set in E. side power pole, 2' a.g., 74.3'

B - Boone County witness mark, flush 61.9'

C - INDOT ROW marker, southwest edge, 63.8'

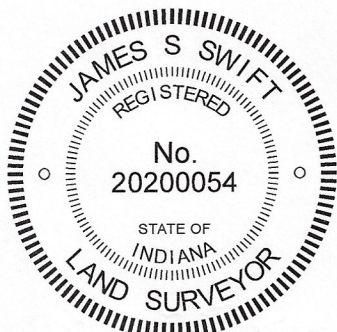
D - Mag nail set in W. side power pole, 2' a.g., 86.5'



The INDOT Type B monument was found in place and held as marking the corner.

A BCS record of February 23-25, 1858 states, with respect to this corner, "Reest. from old wit trees. Rock 11x14." A BCS tie card dated July 1, 1982 shows the corner as a P.K. Nail. A BCS tie card dated December, 2003 shows the corner as a Type "C" Monument. Common distance ties indicate that the monument found in 2003 was in the same, or nearly the same, position as the P.K. nail shown on the 1982 tie card. No excavation was performed at this corner as it falls in a state highway. The Type B monument found is believed to be the same monument as is referenced on the 2003 tie card. This position is known to have been held as marking the corner for many years and fits with local evidence, being at the intersection of the roads. The Type B monument was held as marking the corner.

This corner was originally established as a wood post in 1820.



*Kenneth E. Hedge*  
Kenneth E. Hedge, County Surveyor

*James S. Swift*  
James S. Swift, IN LS 20200054  
July 21, 2020

Jackson Township

Section 3 T17N, R2W	Section 2 T17N, R2W
Section 10 T17N, R2W	Section 11 T17N, R2W

# SECTION CORNER RECORD

SW 700-850

## BOONE COUNTY SURVEYOR'S OFFICE

State Plane grid coordinates NAD83 (2011):

North: 1708173.70 East: 3080099.44 (U.S. survey feet)

Type of monument: Harrison, 4" disk 'Section Corner'

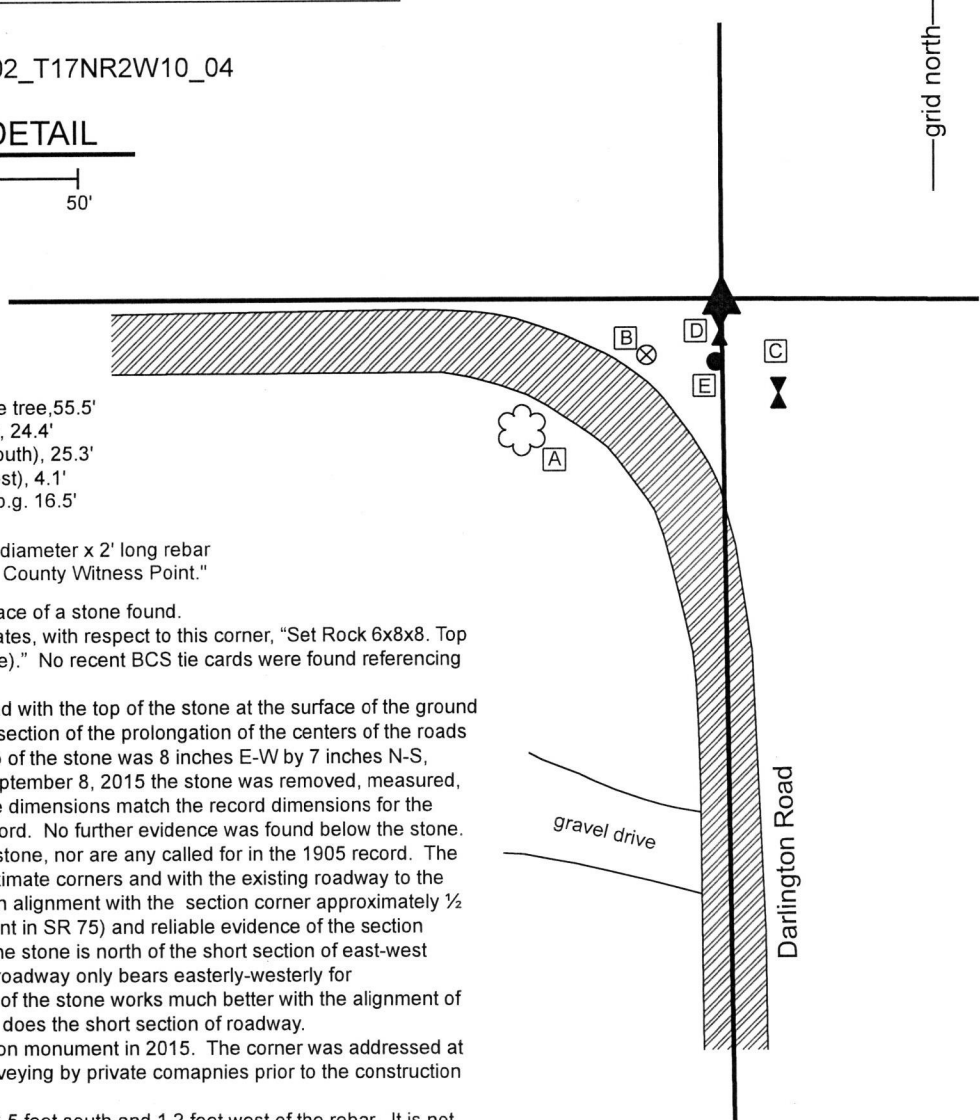
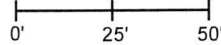
Depth: Flush with adjacent ground

Indiana tie card references:

IN02\_T17NR2W03\_76 IN02\_T17NR2W10\_04

### CORNER WITNESS DETAIL

SCALE 1" = 50'



- A - N.E. Edge, 27 inch diameter maple tree, 55.5'
- B - Boone County witness mark, flush, 24.4'
- C - North edge, sign post (Arrow to South), 25.3'
- D - East edge, sign post (Arrow to West), 4.1'
- E - 5/8 inch rebar, plastic cap, 1 inch b.g. 16.5'

Boone County witness mark is a 3/8" diameter x 2' long rebar bearing a metal cap stamped "Boone County Witness Point."

The Harrison monument was set in place of a stone found.

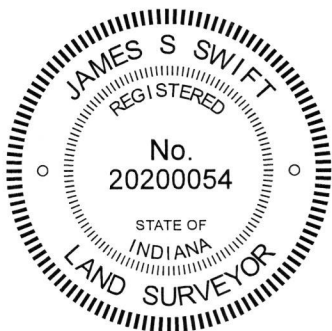
A BCS record of August 5-6, 1905 states, with respect to this corner, "Set Rock 6x8x8. Top Rock 6x8x7 (set over point of old stake)." No recent BCS tie cards were found referencing this corner.

A stone found embedded in the ground with the top of the stone at the surface of the ground was found near the approximate intersection of the prolongation of the centers of the roads to the south and west. The visible top of the stone was 8 inches E-W by 7 inches N-S, oriented in cardinal directions. On September 8, 2015 the stone was removed, measured, and found to be 6 inches thick. These dimensions match the record dimensions for the lower stone described in the 1905 record. No further evidence was found below the stone. No specific marks were found on the stone, nor are any called for in the 1905 record. The position of the stone fits well with proximate corners and with the existing roadway to the south. The stone is also reasonably in alignment with the section corner approximately 1/2 mile east (an INDOT Type B monument in SR 75) and reliable evidence of the section corner approximately 1/2 mile west. The stone is north of the short section of east-west roadway to the west. This section of roadway only bears easterly-westerly for approximately 400 feet. The position of the stone works much better with the alignment of the corners to the east and west than does the short section of roadway.

The stone was replaced with a Harrison monument in 2015. The corner was addressed at that time in support of preliminary surveying by private companies prior to the construction of the Fukaie plant to the east.

A rebar with plastic cap was found 16.5 feet south and 1.2 feet west of the rebar. It is not known whether the rebar was intended to mark the corner or was intended as a witness to the corner. No surveys were found documenting the establishment of the rebar.

This corner was originally established as a wood post in 1820.



*Kenneth E. Hedge*  
 Kenneth E. Hedge, County Surveyor

*James S. Swift*  
 James S. Swift, IN LS 20200054

March 6, 2019

Jackson Township

Section 3  
T17N, R2W

▲  
 Section 10  
 T17N, R2W



# SECTION CORNER RECORD

SW 750-800

## BOONE COUNTY SURVEYOR'S OFFICE

State Plane grid coordinates NAD83 (2011):

North: 1705506.53 East: 3082778.95 (U.S. survey feet)

Type of monument: plug in monument box, INDOT Type B

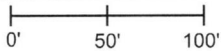
Depth: Flush with adjacent gravel driveway.

Indiana tie card references:

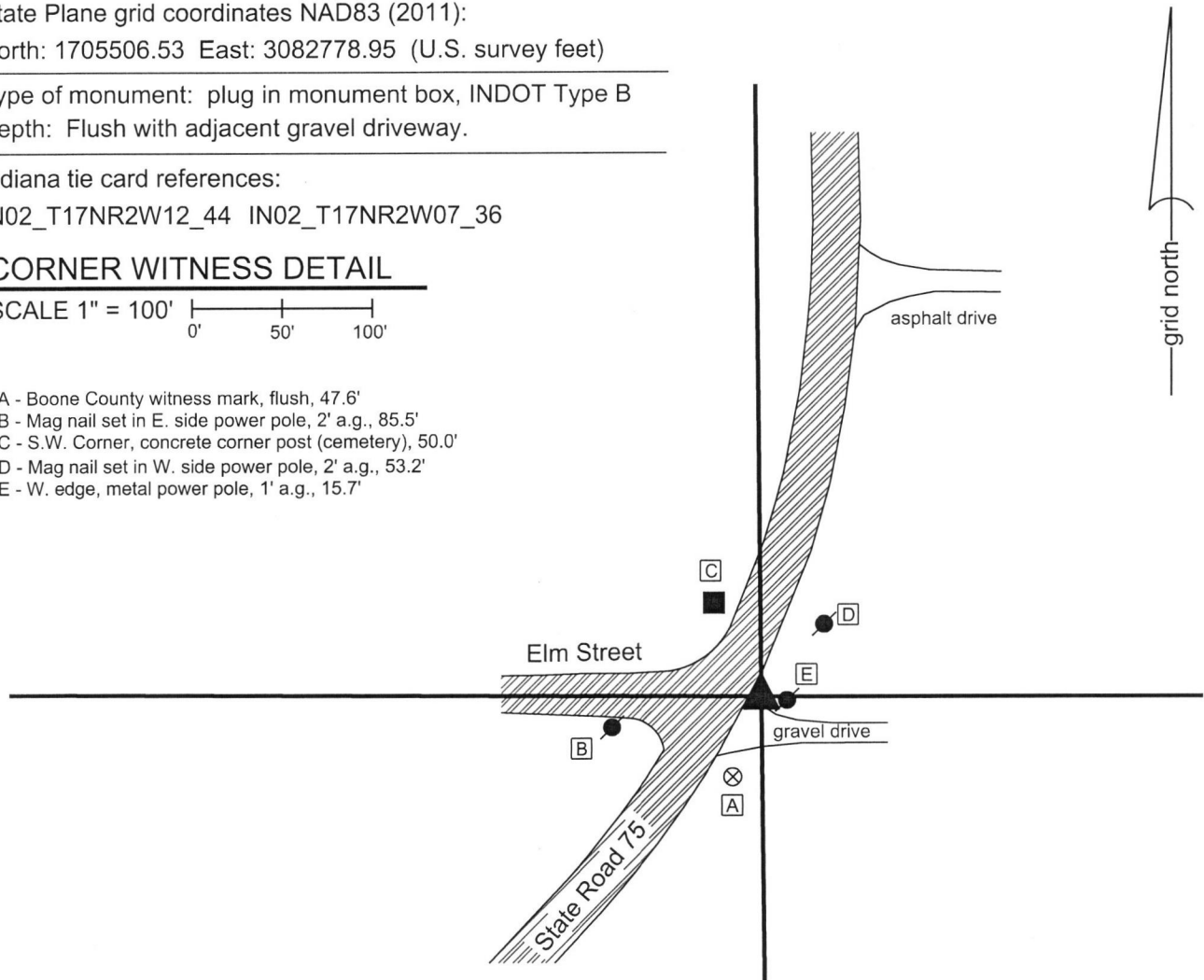
IN02\_T17NR2W12\_44 IN02\_T17NR2W07\_36

### CORNER WITNESS DETAIL

SCALE 1" = 100'

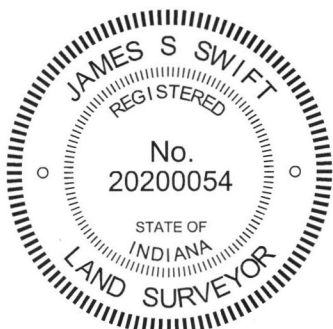


- A - Boone County witness mark, flush, 47.6'
- B - Mag nail set in E. side power pole, 2' a.g., 85.5'
- C - S.W. Corner, concrete corner post (cemetery), 50.0'
- D - Mag nail set in W. side power pole, 2' a.g., 53.2'
- E - W. edge, metal power pole, 1' a.g., 15.7'



The Type B monument was found in place and accepted as marking the corner.

A BCS tie card dated December, 2003 shows the corner as a railroad spike. This monument was subsequently removed by INDOT and replaced by a Type B monument. The monument is in an area of fill, in-line with the southerly prolongation of the center of State Road 75 from the north and in-line with the easterly prolongation of the center of Elm Street from the west. No excavation was performed at this corner and the Type B monument is accepted as marking the corner.



  
Kenneth E. Hedge, County Surveyor

  
James S. Swift, IN LS 20200054  
July 31, 2019

Jackson Township

Section 12 T18N, R2W	Section 7 T17N, R2W
-------------------------	------------------------

# SECTION CORNER RECORD

SW 750-800

## BOONE COUNTY SURVEYOR'S OFFICE

State Plane grid coordinates NAD83 (2011):

North: 1705506.53 East: 3082778.95 (U.S. survey feet)

Type of monument: plug in monument box, INDOT Type B

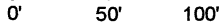
Depth: Flush with adjacent gravel driveway.

Indiana tie card references:

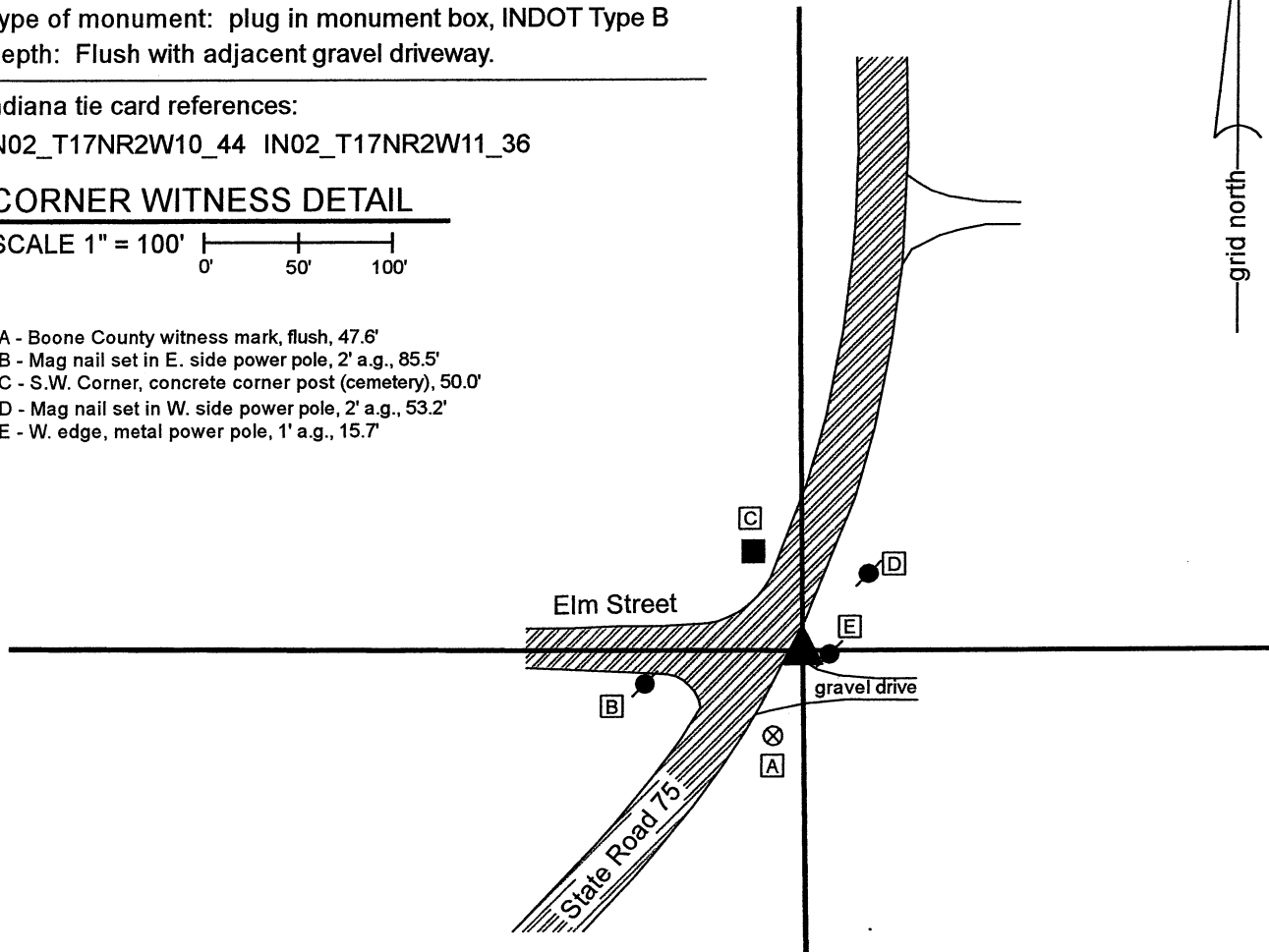
IN02\_T17NR2W10\_44 IN02\_T17NR2W11\_36

### CORNER WITNESS DETAIL

SCALE 1" = 100'

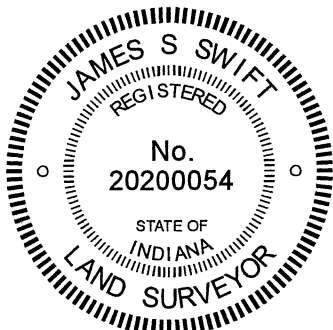



- A - Boone County witness mark, flush, 47.6'
- B - Mag nail set in E. side power pole, 2' a.g., 85.5'
- C - S.W. Corner, concrete corner post (cemetery), 50.0'
- D - Mag nail set in W. side power pole, 2' a.g., 53.2'
- E - W. edge, metal power pole, 1' a.g., 15.7'

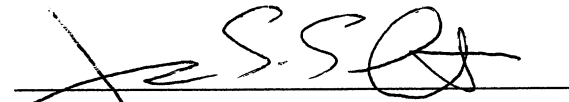


The Type B monument was found in place and accepted as marking the corner.

A BCS tie card dated December, 2003 shows the corner as a railroad spike. This monument was subsequently removed by INDOT and replaced by a Type B monument. The monument is in an area of fill, in-line with the southerly prolongation of the center of State Road 75 from the north and in-line with the easterly prolongation of the center of Elm Street from the west. No excavation was performed at this corner and the Type B monument is accepted as marking the corner.



  
Kenneth E. Hedge, County Surveyor

  
James S. Swift, IN LS 20200054  
July 31, 2019  
Revised December 7, 2020

Jackson Township

Section 10 T17N, R2W	Section 11 T17N, R2W
-------------------------	-------------------------

# SECTION CORNER RECORD

## BOONE COUNTY SURVEYOR'S OFFICE

SW 700-900

State Plane grid coordinates NAD83 (2011):  
 North: 1708175.96 East: 3077445.1 (U.S. survey feet)

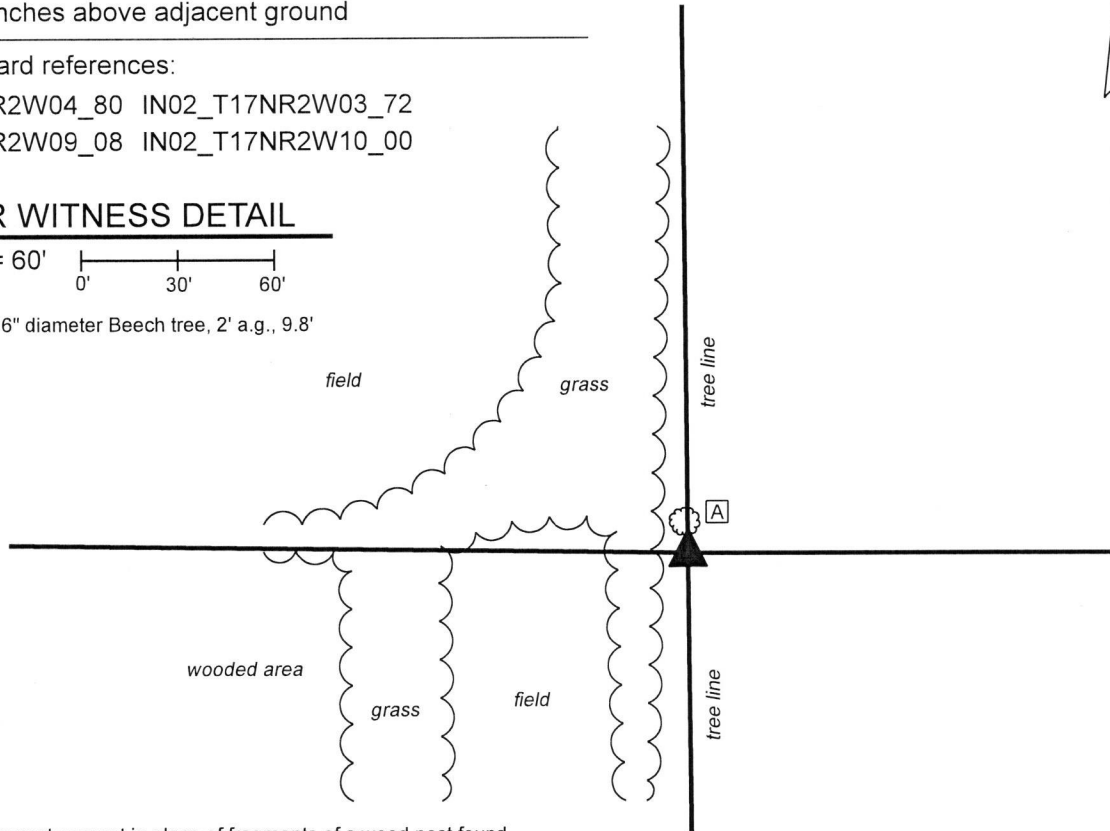
Type of monument: Harrison, 4" disk 'Section Corner'  
 Depth: Six inches above adjacent ground

Indiana tie card references:  
 IN02\_T17NR2W04\_80 IN02\_T17NR2W03\_72  
 IN02\_T17NR2W09\_08 IN02\_T17NR2W10\_00

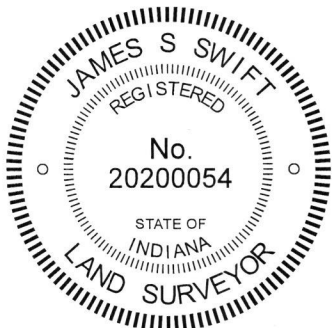
### CORNER WITNESS DETAIL

SCALE 1" = 60'

A - South edge 6" diameter Beech tree, 2' a.g., 9.8'



The Harrison monument was set in place of fragments of a wood post found. A BCS record dated April 1, 1865 states, with respect to this corner, "Found a stake and one tree (down)." A record of December 2, 1868 states "Reest. from roots of elm and a stake. Set rock 20.11.8 mark +." A subsequent record of December 30-31, 1878 does not specifically describe the corner but does provide distances from the subject corner to the northeast and northwest corners of section 9. This corner was excavated on March 1, 2019 and on September 12, 2019. Prior to excavation, a north-south tree line was observed, but minimal evidence of the east-west lines was visible. A steel t-post in the north-south tree line was observed as the only above-ground evidence of the corner and had been considered previously as an approximate position of the corner for purpose of analysis of the north line of section 10. Prior to searching for more reliable evidence of the subject corner, the distances reported in the 1878 record were used to approximate the position of the corner, as held at that time. This analysis yielded the conclusion that the aforementioned t-post was most likely 16 to 20 feet north of the corner as held in 1878. Excavation in the vicinity of the computed position of the corner revealed numerous rocks surrounding fragments of a cedar post. Pieces of metal bracing hardware was also found in this immediate vicinity. No such evidence was found in the vicinity of the t-post to the north. The numerous rocks and post fragments clearly appeared in the field to represent the old corner post and associated rocks. Substantial manual excavation in this vicinity did not reveal the rock described in the 1868 record. Several of the found rocks were of similar dimension but none could be confirmed to be the specific rock referenced in that entry. A large rock, being 22 inches east-west by 20 inches north-south by 15 inches tall (as measured on the north edge) was found embedded in the ground immediately south of the fragments of post and other rocks. The fragments of cedar post were accepted as providing the best available evidence of the corner. A Harrison monument was set in place of this evidence, anchored with concrete to the north side of the aforementioned large rock. The monument was surrounded by several of the other smaller rocks found during excavation. This corner was originally established as a wood post in 1820.



*Kenneth E. Hedge*  
 Kenneth E. Hedge, County Surveyor

*James S. Swift*  
 James S. Swift, IN LS 20200054  
 October 15, 2019

Jackson Township

Section 4 T17N, R2W	Section 3 T17N, R2W
Section 9 T17N, R2W	Section 10 T17N, R2W

# SECTION CORNER RECORD

# SW 750-900

## BOONE COUNTY SURVEYOR'S OFFICE

State Plane grid coordinates NAD83 (2011):

North: 1705527.71 East: 3077473.91 (U.S. survey feet)

Type of monument: Harrison, 4" disk 'Section Corner'

Depth: flush with adjacent ground

Indiana tie card references:

IN02\_T17NR2W09\_44 IN02\_T17NR2W10\_36

### CORNER WITNESS DETAIL

SCALE 1" = 60'  
0' 30' 60'

The Harrison Monument was set in place of a section of steel t-post found.

A BCS record dated April 21, 1865 calls the corner "Found stake and one tree (down)." A BCS record of December 2, 1868 states, with respect to this corner, "Reest from roots of Elm and a stake. Set a rock 22,13,8 marked +."

An undated BCS tie card known to date from the mid 1990s calls the corner "Metal Fence Post" and includes the statement "Stone removed and point reset previous record surveys." It is not clear to what surveys the card refers, as no surveys were found in the Boone County Recorder's Office referencing the corner prior to the expected time frame of the tie card.

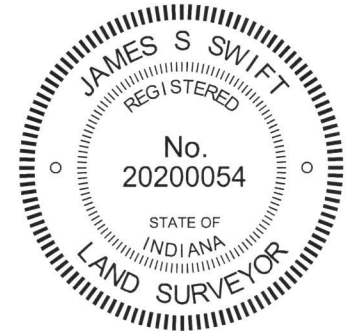
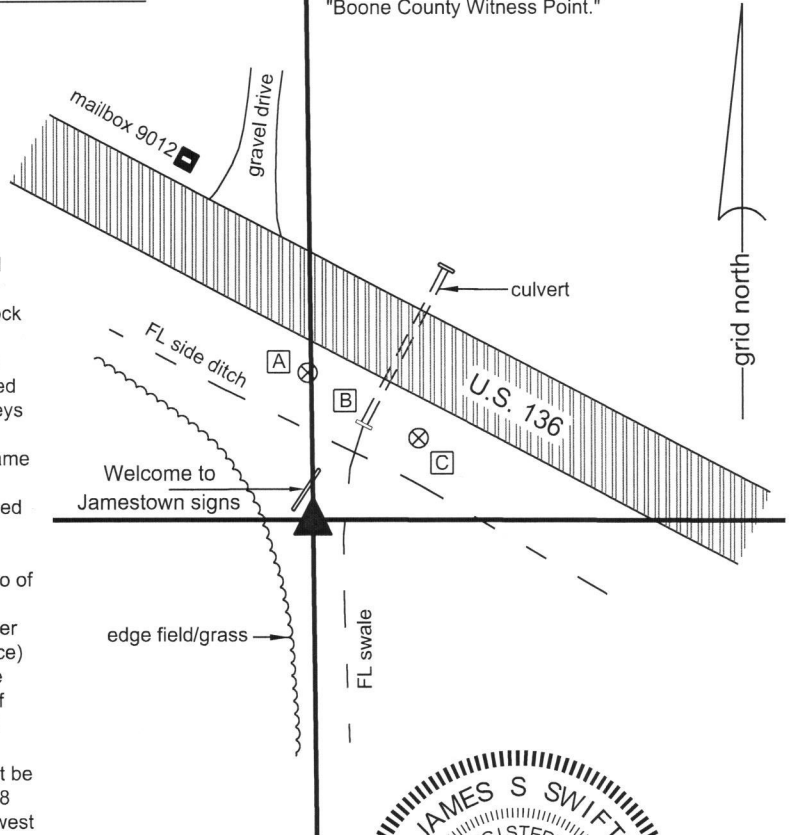
This corner falls along the edge of a substantial swale and it is believed highly unlikely that an older stone monument would remain in place, given the obvious excavation in the vicinity of the corner. The metal fence post referenced on the undated tie card was found, as were two of the witnesses monuments shown on that card. The description of a nearby property on the north side of US 136, slightly west of the corner (see Instrument 200700009490 in the Boone County Recorder's Office) is referenced to the corner with the specific reference to a steel fence post marking the apparent corner. Rebars called for at the corners of that property fit with the deed calls and the found steel post. Minimal uncertainty is associated with the position of the post, as found and referenced on the undated tie card. However, some uncertainty must be associated with the generally accepted position of the corner, as a 5/8 inch rebar was also found approximately 0.8 foot south and 0.8 foot west of the steel fence post. It is believed that this rebar has been held as the corner for recent surveys in the vicinity though confirmation was not found in the Boone County Recorder's Office, as the rebar is not mentioned on the recorded surveys found. The rebar was left in place, but is not considered the corner, as the available records indicate that the steel post is the corner.

Further uncertainty is also associated with this corner with respect to the plats of the Western Acres subdivisions adjoining the corner to the south and west. The plat for the original Western Acres subdivision, Plat Book 5, page 20, Boone County Recorder's Office shows the corner at a position which is believed to be approximately 18.4 feet further north than the position of the corner as established by this document and the previous tie card. It is noted that the subsequent two plats for additional Western Acres additions are tied to the southwest corner of section 10, rather than to the west quarter corner (subject corner) which is closer to the subdivisions and was already referenced on the first Western Acres plat. The plats of the second and third additions are tied to the west line of the southwest quarter of section 10 but do not reference the west quarter corner. It is apparent from monumentation found in Western Acres Second Addition (Plat Book 8, page 53), that the plats were tied to a corner much closer to the corner held currently than the corner shown on the first addition.

Hence, uncertainties of up to 18.5 feet north-south may be associated with the position of the corner with respect to the plat of the original Western Acres subdivision and uncertainties of 1 foot in all directions may be associated with the presence of the found 5/8 inch rebar.

- A - Boone County witness mark, flush, 45.9'
- B - Middle, South edge of concrete headwall, 33.0'
- C - 5/8 inch rebar found, no cap, 41.6'

Boone County witness mark is a 3/8" diameter x 2' long rebar bearing a metal cap stamped "Boone County Witness Point."



*Kenneth E. Hedge*  
 Kenneth E. Hedge, County Surveyor

*James S. Swift*  
 James S. Swift, IN LS 20200054

September 26, 2017

Jackson Township

Section 9 T17N, R2W	▲	Section 10 T17N, R2W
------------------------	---	-------------------------

# SECTION CORNER RECORD

# SW 800-800

## BOONE COUNTY SURVEYOR'S OFFICE

State Plane grid coordinates NAD83 (2011):

Section Corner: North: 1702852.11 East: 3082809.81 (U.S. survey feet)

N.E. Corner of pillar: North: 1702852.40 East: 3082810.11 (U.S. survey feet)

Type of monument: top, center of 8" diameter concrete monument

Two inches above ground, located below N.E. corner of brick pillar

Indiana tie card references:

IN02\_T17NR2W11\_72 IN02\_T17NR2W10\_80

IN02\_T17NR2W15\_08 IN02\_T17NR2W14\_00

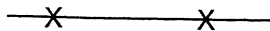
### CORNER WITNESS DETAIL

SCALE 1" = 40'

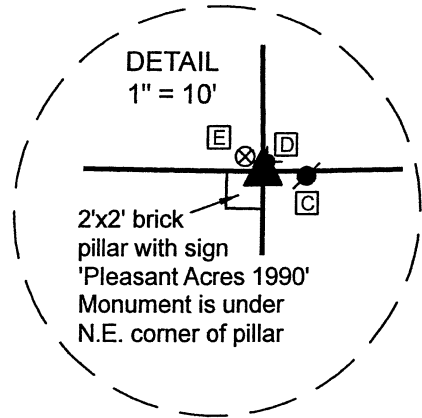
0' 20' 40'



- vinyl slat fence

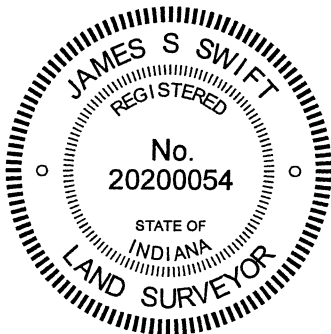
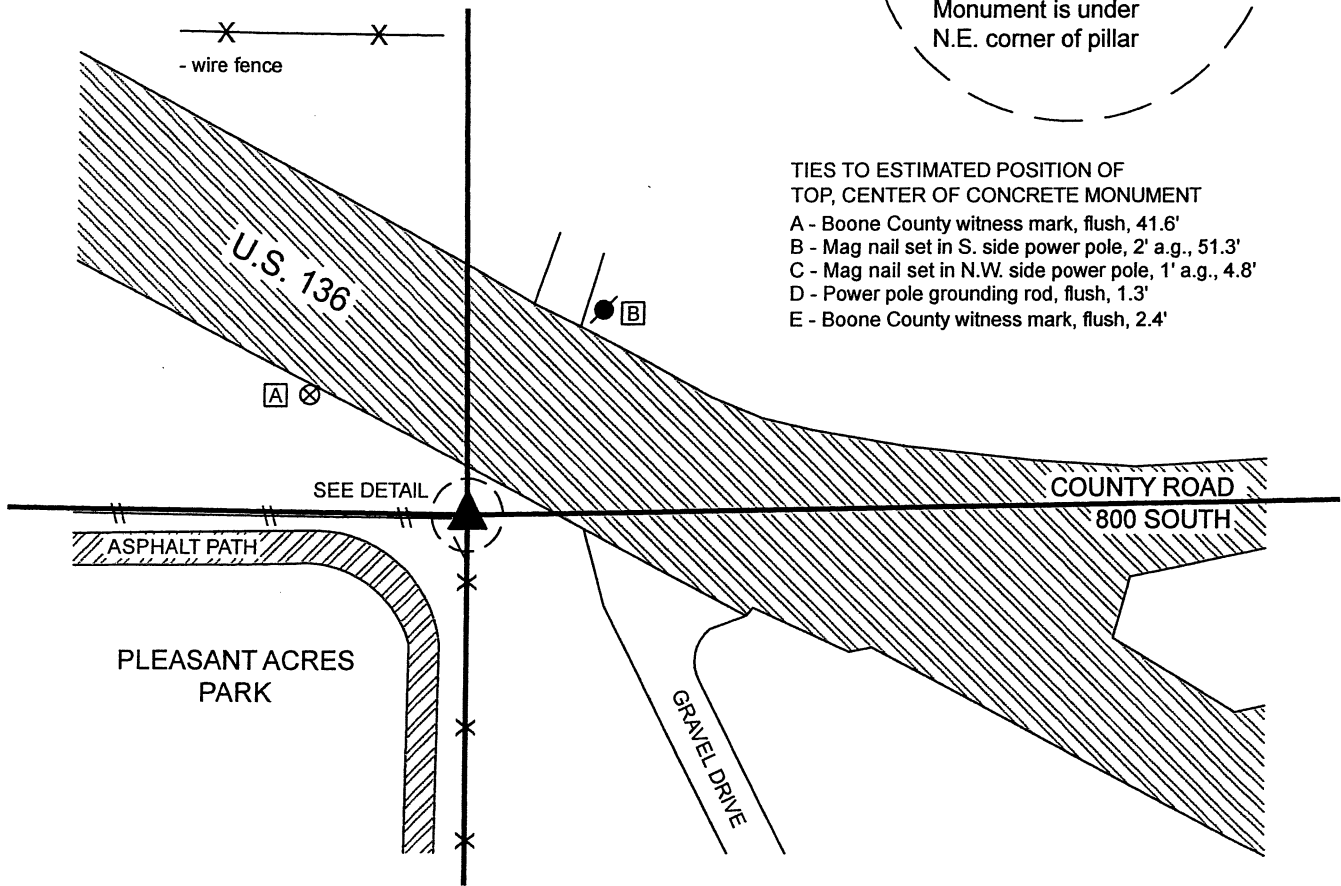


- wire fence



TIES TO ESTIMATED POSITION OF TOP, CENTER OF CONCRETE MONUMENT

- A - Boone County witness mark, flush, 41.6'
- B - Mag nail set in S. side power pole, 2' a.g., 51.3'
- C - Mag nail set in N.W. side power pole, 1' a.g., 4.8'
- D - Power pole grounding rod, flush, 1.3'
- E - Boone County witness mark, flush, 2.4'



*Kenneth E. Hedge*  
Kenneth E. Hedge, County Surveyor

*James S. Swift*  
James S. Swift, IN LS 20200054

January 27, 2021 PAGE 1 OF 2

Jackson Township  
Boone County

Eel River Township  
Hendricks County

Section 10 T17N, R2W	Section 11 T17N, R2W
Section 15 T17N, R2W	Section 14 T17N, R2W

BOONE COUNTY SURVEYOR'S OFFICE

The concrete monument marking the corner is situated under the northeast corner of a 2-foot by 2-foot brick pillar with a placard on the north side stating "Pleasant Acres 1990."

No specific descriptions of this corner were found in the BCS Surveyor's Record beyond the original establishment of the corner as a wood post in 1820.

A Location Control Route Survey by William A. Schmidt, IN LS No. 87001, recorded as Instrument 9800010682 in the Office of the Hendricks County Surveyor states, with respect to this corner, "Found 203 diameter concrete monument with hole in center protruding 50 on an east west fence line at the apparent NW corner of Section 14-T17N-R2W. No information on corner available from Hendricks County Surveyor's Office. The corner uncertainty is estimated to be +/- 1 meter." It is noted that all dimensions on this survey are in metric units. The reference to the number 203 represents a reference to millimeters, which equates to 8 inches. The number 50 is also stated in millimeters, which equates to 2 inches.

The plat of the minor subdivision, Hillview Estates #2, certified by Jerry L. Carter, IN LS No. S0350, recorded as Instrument 200130408 in the Office of the Hendricks County Surveyor shows the corner as "Conc. Monument (Fnd)"

An ALTA/ACSM Land Title Survey by Joshua David Werner, IN LS No. 21200020, recorded as Instrument 2019000353 in the Office of the Boone County Recorder, shows the corner as a 5/8" rebar with cap stamped "Schneider Firm "0001" Set. The Surveyor's Report for this survey states, "A rebar was set at the apparent Southeast Corner of said Southeast Quarter, and the uncertainty in its location is unknown. A drill hole was found in a concrete post monumenting the corner during prior field work by The Schneider Corporation." The report references the two documents noted above as recorded in the Hendricks County Recorder's Office.

This corner was investigated over the course of several years. Extensive surveying was performed along the section line to the west, locating numerous rebars and posts.

On first sight, it may be observed that the base of the 2-foot by 2-foot brick pillar at the northeast corner of the Pleasant Acre Park, Jamestown, Indiana, is uniform, except for the northeast corner of the pillar. Under this corner of the pillar, the north and east edges of a cylindrical piece of concrete are visible. The top of this piece of concrete is not visible, as it is situated under the brick pillar. The concrete object protrudes approximately 2 inches out of the ground. Upon preliminary investigation, no other monument was found in the immediate vicinity of the corner. Investigation of the area indicates that the numerous rebars found along the line to the west generally fit with a line which terminates at this concrete object. This observation is complicated by the fact that two different monuments have been held to mark the south quarter corner of Section 11, being the same as the north quarter corner of Section 15 (see BCS Corner SW 800-850). But even taking this complication into consideration, the concrete object under the brick pillar fits reasonably well with found monumentation to the west and also fits with fence evidence to the south and west.

The Location Control Route Survey referenced above shows a diagram for the corner which demonstrates the relative position of the corner with respect to three distance ties. Two of the ties appear to be no longer present, but one of the ties remains, being a nail in a bottle cap in the north edge of the power pole adjacent to the corner and slightly east of the brick pillar. This tie shows a distance of 1.567 meters, which fits precisely with the estimated position of the top of the concrete object below the corner of the brick pillar. It is also noted that, based on the visible north and east edges, the concrete object is 8 inches in diameter, matching the call in the Route Survey. As noted above, it protrudes 2 inches out of the ground, also matching the call in the Route Survey.

Prior to 2018, the only monument which appeared to be marking the corner was the partially visible concrete monument. No documentation had been produced at that time, as the position of the corner remained uncertain and sufficient proof had not yet been produced to reliably call the monument the corner. However, in November, 2018, a rebar bearing a plastic cap stamped "Schneider Firm 0001" was set near the southwest corner of the pillar. The aforementioned ALTA/ACSM Land Title Survey states that the rebar was set in place of a concrete monument previously found. Upon contact, Josh Werner carefully studied the data sets from which the concrete monument was stated to have been previously found. His review of the data led him to the conclusion that, although a previous crew had stated the monument to be found, in fact that crew had computed the position of the monument with respect to remote data shown on the Schmidt Route Survey, and labelled it incorrectly in the data set as having been found whereas it was actually computed. Mr. Werner concluded that minimal confidence should be attached in the position of the rebar marking the corner.

Further investigation into the origin of the brick pillar yielded no certain date of its construction. It would be logical to conclude that the pillar was built after the date of the two surveys which held the monument located under the pillar, but this cannot be stated with certainty.

Given the references to the monument on the aforementioned documents, the harmony of the position of the monument with the evidence of other survey monuments and evidence of fences to the south and west, and given that the monument appears to be of the same dimensions and height as that called in the Schmidt Route Survey and also appears to fit precisely with the one remaining distance tie shown on that survey, the existing monument is held as marking the corner.

The monument remains inaccessible, below the base of the brick pillar. The coordinates shown hereon represent the position of the northeast corner of the brick pillar as located in the field and the position of the center of the monument, as estimated with respect to the dimensions of the monument. The rebar with Schneider cap remains near the southwest corner of the pillar, 2.4 feet south and 1.8 feet west of the computed position of the center of the monument.



# SECTION CORNER RECORD

SW 800-850

## BOONE COUNTY SURVEYOR'S OFFICE

State Plane grid coordinates NAD83 (2011):

North: 1702894.49 East: 3080168.61 (U.S. survey feet)

Type of monument: 5/8" rebar with aluminum cap stamped,  
'Hendricks County Surveyor'

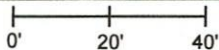
Depth: One inch below adjacent road surface

Indiana tie card references:

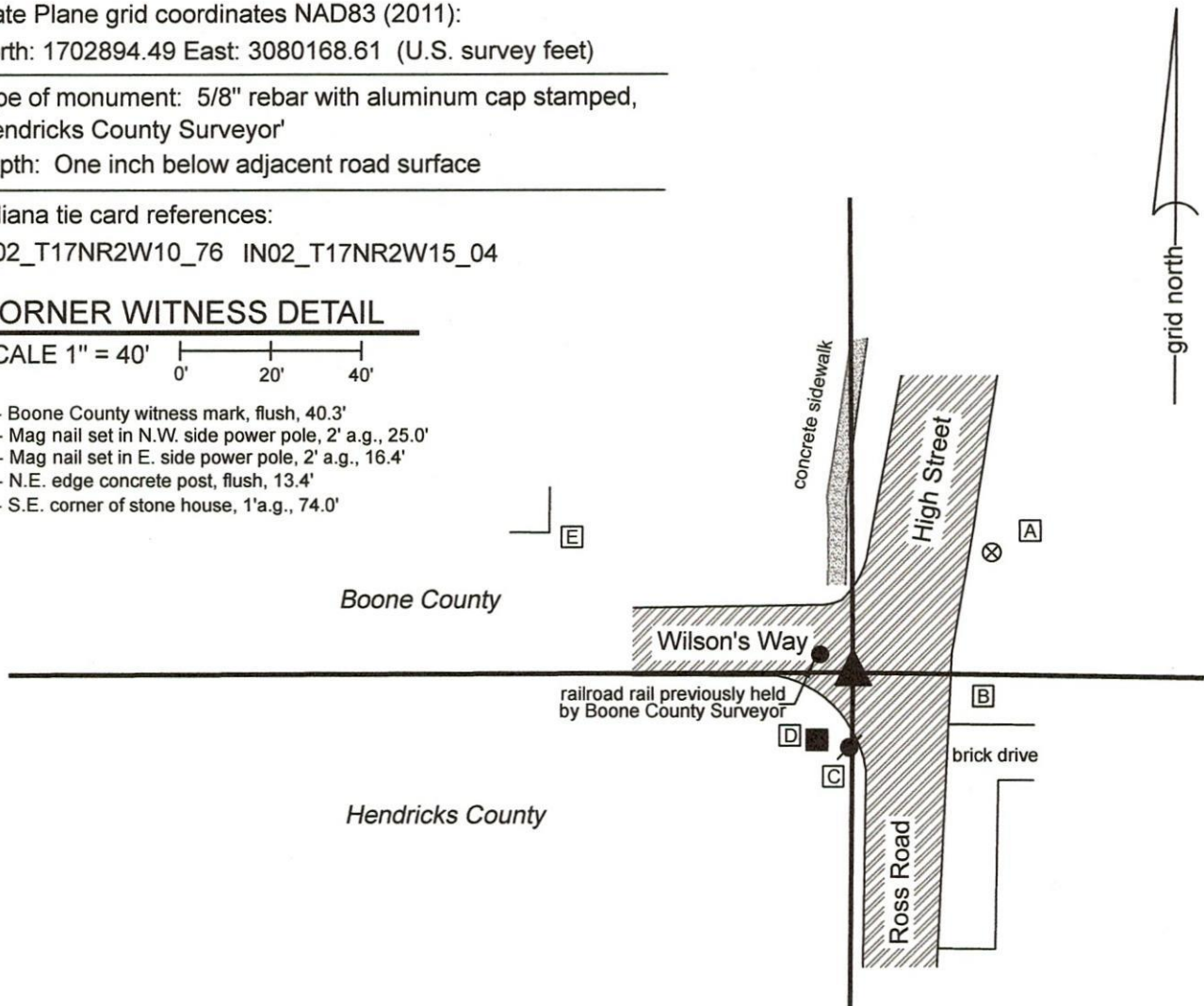
IN02\_T17NR2W10\_76 IN02\_T17NR2W15\_04

### CORNER WITNESS DETAIL

SCALE 1" = 40'

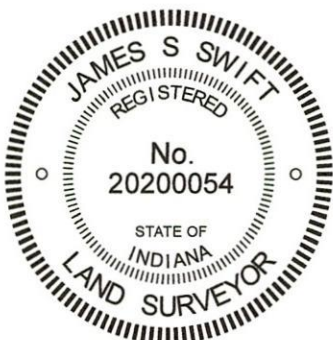


- A - Boone County witness mark, flush, 40.3'
- B - Mag nail set in N.W. side power pole, 2' a.g., 25.0'
- C - Mag nail set in E. side power pole, 2' a.g., 16.4'
- D - N.E. edge concrete post, flush, 13.4'
- E - S.E. corner of stone house, 1'a.g., 74.0'

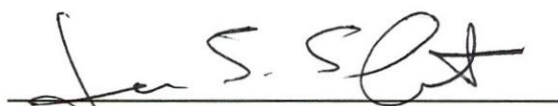


The rebar with aluminum disk was found in place and held as marking the corner.

Per the Hendricks County Surveyor's Office, a 30 inch long stone was set in 1854 and was found in 1998 by surveyor Stanley Shartle. The rebar with metal cap was set directly over the stone. Hendricks County tie cards dated October 6, 1998 and verified December 3, 2013 confirm this finding. The corner, as identified and monumented by Hendricks County was held as marking the corner. A tie card by the Boone County Surveyor's Office, dated October 15, 1969 shows the corner as "No stone" and depicts the position of the corner to be 16.1 feet north of a concrete post. A strong metal reading found 4.1 feet north and 7.2 feet west of the Hendricks County monument is believed to be a railroad rail set by the Boone County Surveyor's Office in 1969. This position is not held as the corner. Excavation was not performed at this corner and the Hendricks County monument over the stone is held as marking the corner. One survey recorded in the Boone County Recorder's Office was found which appears to hold the position of the railroad rail. This survey, recorded as Instrument 9707890, August 28, 1997 shows a railroad spike at the corner. The position of the corner does not appear to be critical to the positions established on that survey. Several other surveys, including those recorded as Instruments 2019000353, 2019001615 and 20119007568 all hold the Hendricks County monument as the corner.



  
Kenneth E. Hedge, County Surveyor

  
James S. Swift, IN LS 20200054  
March 3, 2020

Jackson Township  
Boone County

Section 10  
T17N, R2W

Eel River Township  
Hendricks County

Section 15  
T17N, R2W

# SECTION CORNER RECORD

SW 800-900

## BOONE COUNTY SURVEYOR'S OFFICE

State Plane grid coordinates NAD83 (2011):

North: 1702885.50 East: 3077504.43 (U.S. survey feet)

Type of monument: one-inch diameter iron pin in concrete

Depth: Flush with adjacent road surface

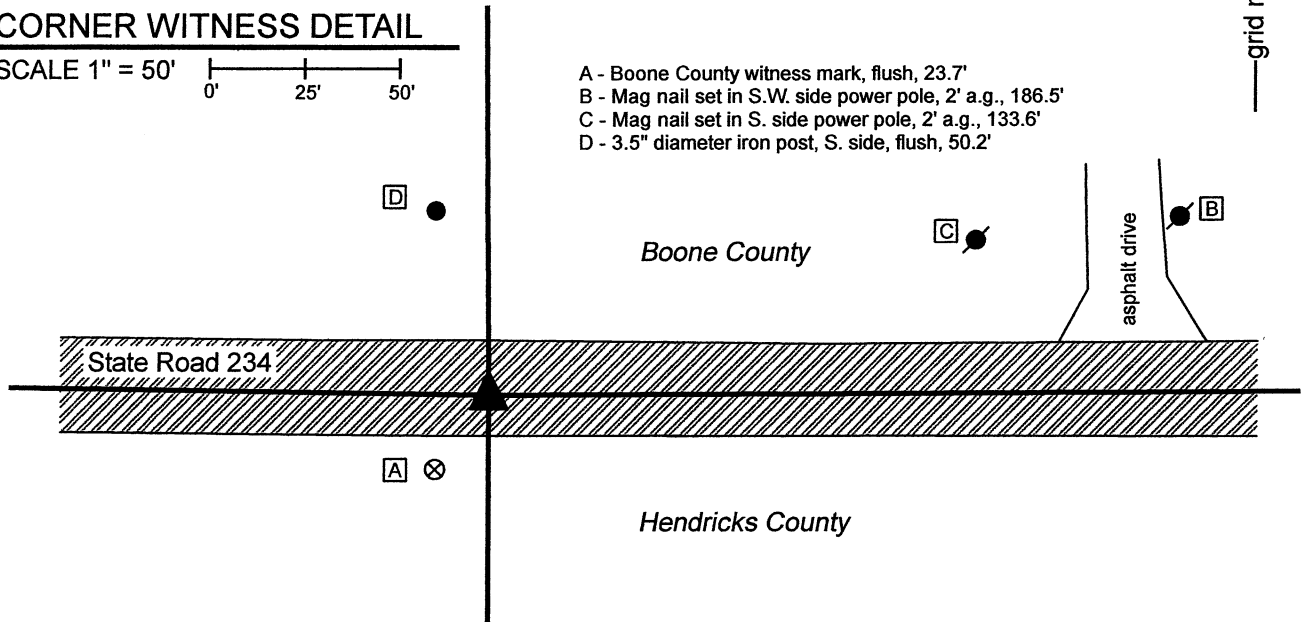
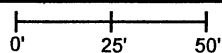
Indiana tie card references:

IN02\_T17NR2W10\_72 IN02\_T17NR2W09\_80

IN02\_T17NR2W16\_08 IN02\_T17NR2W15\_00

### CORNER WITNESS DETAIL

SCALE 1" = 50'



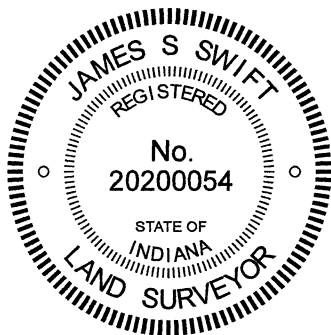
- A - Boone County witness mark, flush, 23.7'
- B - Mag nail set in S.W. side power pole, 2' a.g., 186.5'
- C - Mag nail set in S. side power pole, 2' a.g., 133.6'
- D - 3.5" diameter iron post, S. side, flush, 50.2'



The iron pin in concrete was found and held as marking the corner.

A BCS record of May 17-18, 1866 states, with respect to this corner, "Found point by measure there found roots of both trees. Also an old stake in ground at corner. Drove stake and set two rocks. Under one sandy 5.4.2-1/2. Top one 16.12.12." No recent BCS tie cards were found referencing the corner.

The plans for State Road 234, being Proj. No. WPSS and MS-431, Indiana State Highway Commission, S.R. 43 - Jamestown Road (1936) show a "hole in corner stone" at P.I. Station 794+17.23. These plans do not specifically call out the P.I. as a section corner, but do show at the P.I. in line with the state road centerline to the east and west and in-line with fences to the north and south, with the call of Section Line P.L. along the fences. The 1-inch diameter iron pin in concrete appears to be a typical INDOT section corner monument but no information was provided by INDOT as to when this specific monument was set. A full route survey was not performed to determine the precise station of the monument, but it is noted the distances between this monument and other similar monuments found along this stretch of road match the computed distances between stations shown on the plans within less than 0.5 foot. No excavation was performed at this corner as it falls in a state road. The iron pin in concrete was held as marking the corner.



*Kenneth E. Hedge*  
Kenneth E. Hedge, County Surveyor

*James S. Swift*  
James S. Swift, IN LS 20200054  
June 23, 2021

Jackson  
Township  
Boone  
County

Eel River  
Township  
Hendricks  
County

Section 9 T17N, R2W	Section 10 T17N, R2W
Section 16 T17N, R2W	Section 15 T17N, R2W