

SECTION CORNER RECORD

SW 700-200

BOONE COUNTY SURVEYOR'S OFFICE

State Plane grid coordinates NAD83 (2011):

North: 1708320.48 East: 3114596.24 (U.S. survey feet)

Type of monument: Harrison, 4" disk 'Section Corner'

Depth: One inch above adjacent ground.

Indiana tie card references:

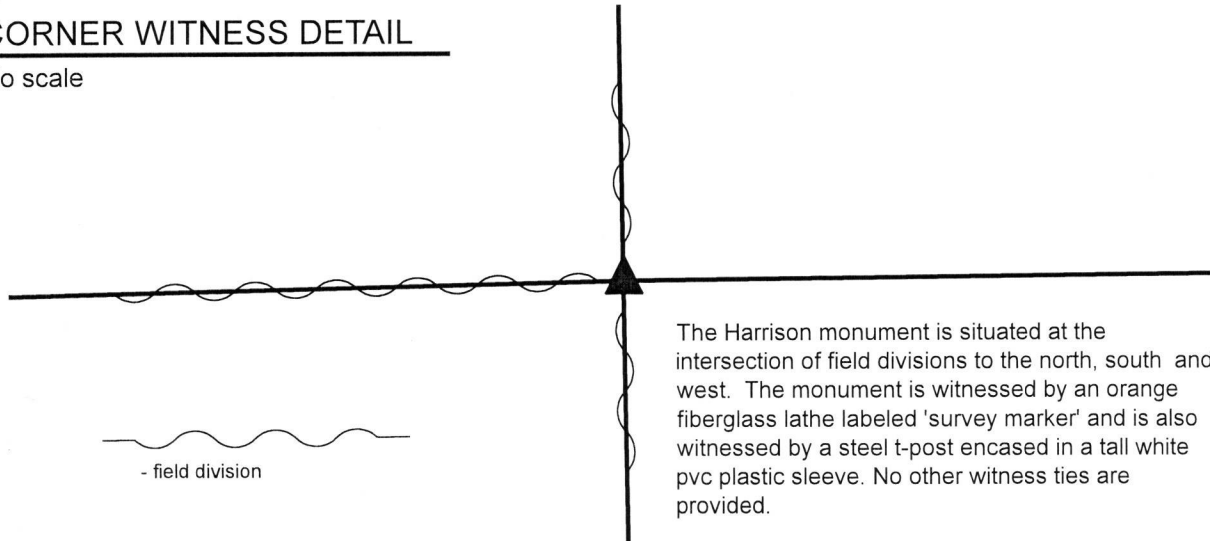
IN02_T17NR1W03_80 IN02_T17NR1W02_72

IN02_T17NR1W10_08 IN02_T17NR1W11_00



CORNER WITNESS DETAIL

No scale



The Harrison monument is situated at the intersection of field divisions to the north, south and west. The monument is witnessed by an orange fiberglass lathe labeled 'survey marker' and is also witnessed by a steel t-post encased in a tall white pvc plastic sleeve. No other witness ties are provided.

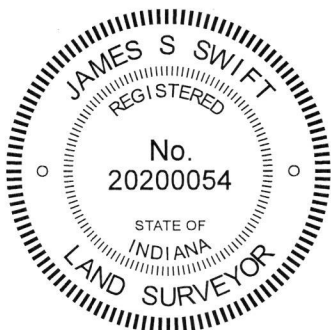
The Harrison monument was set over a stone found.

A BCS record dated April 22-24, 1883 states, with respect to this corner, "Reest. stone from O.B. tree. Stone as place +."

No recent BCS tie cards were found referencing this corner.

Excavation was performed at this corner on September 27, 2019. Prior to excavation, a steel t-post within a tall white PVC plastic sleeve was observed at the intersection of field divisions to the north, south and west. Excavation revealed that the t-post was driven into the base of an old wood corner post, broken off at ground level. The base of the post was observed to be cedar, 8 inch by 8 inch square. Excavation around the post revealed numerous small rocks and one large rock. The large rock is approximately 1 foot north of the base of the post. The top of this stone was found at 10 inches below grade. The stone was observed to be 21 inches E-W by 11 inches N-S with the top 14 inches exposed. The south side of the stone is flat and vertical and clearly the stone is much larger than the just the exposed 14 inches. A vague etched "+" mark was observed on the top of the stone at the high point, near the south edge of the stone. The stone was clearly not bracing the post and was held as marking the corner. The mark on the stone was held as the specific position of the corner. The top of the stone and the south edge of the stone were encased in concrete and a Harrison monument was set over the etched mark on the stone, anchored primarily to the vertical south edge of the stone. No rebars or other artificial evidence were found in the vicinity of the post.

This corner was originally established as a wood post in 1820.



Kenneth E. Hedge
Kenneth E. Hedge, County Surveyor

James S. Swift
James S. Swift, IN LS 20200054
October 15, 2019

Harrison Township

Section 3 T17N, R1W	Section 2 T17N, R1W
Section 10 T17N, R1W	Section 11 T17N, R1W

SECTION CORNER RECORD

SW 700-300

BOONE COUNTY SURVEYOR'S OFFICE

State Plane grid coordinates NAD83 (CORSS96):

North: 1708203.56 East: 3109308.43 (U.S. survey feet)

Type of monument: Drill hole on top, center of stone

Depth: flush with adjacent ground

Indiana tie card references:

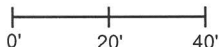
IN02_T17NR1W04_80 IN02_T17NR1W03_72

IN02_T17NR1W09_08 IN02_T17NR1W10_00



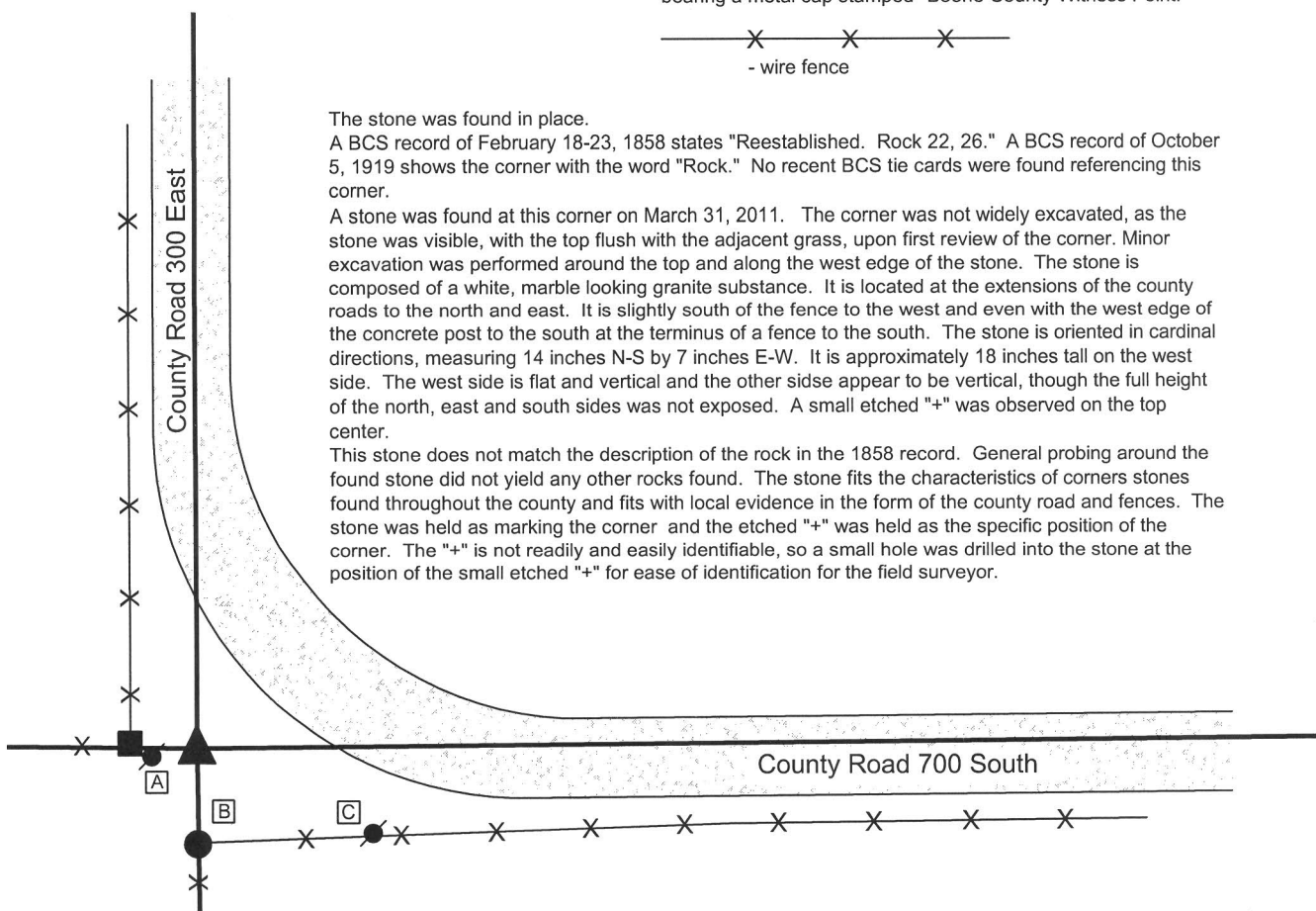
CORNER WITNESS DETAIL

SCALE 1" = 40'



- A - Mag nail set in E. side power pole, 1.5' a.g., 9.38'
- B - N. edge, round concrete post, 1' a.g., 19.00'
- C - Mag nail set in W. side power pole, 2' a.g., 49.21'

Boone County witness mark is a 3/8" diameter x 2' long rebar bearing a metal cap stamped "Boone County Witness Point."

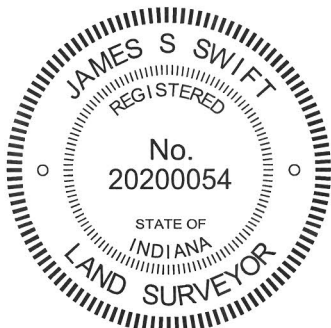


The stone was found in place.

A BCS record of February 18-23, 1858 states "Reestablished. Rock 22, 26." A BCS record of October 5, 1919 shows the corner with the word "Rock." No recent BCS tie cards were found referencing this corner.

A stone was found at this corner on March 31, 2011. The corner was not widely excavated, as the stone was visible, with the top flush with the adjacent grass, upon first review of the corner. Minor excavation was performed around the top and along the west edge of the stone. The stone is composed of a white, marble looking granite substance. It is located at the extensions of the county roads to the north and east. It is slightly south of the fence to the west and even with the west edge of the concrete post to the south at the terminus of a fence to the south. The stone is oriented in cardinal directions, measuring 14 inches N-S by 7 inches E-W. It is approximately 18 inches tall on the west side. The west side is flat and vertical and the other side appear to be vertical, though the full height of the north, east and south sides was not exposed. A small etched "+" was observed on the top center.

This stone does not match the description of the rock in the 1858 record. General probing around the found stone did not yield any other rocks found. The stone fits the characteristics of corners stones found throughout the county and fits with local evidence in the form of the county road and fences. The stone was held as marking the corner and the etched "+" was held as the specific position of the corner. The "+" is not readily and easily identifiable, so a small hole was drilled into the stone at the position of the small etched "+" for ease of identification for the field surveyor.



Kenneth E. Hedge
 Kenneth E. Hedge, County Surveyor

James S. Swift
 James S. Swift, IN LS 20200054

March 30, 2012, Revised March 7, 2013

Harrison Township

Section 4 T17N, R1W	Section 3 T17N, R1W
Section 9 T17N, R1W	Section 10 T17N, R1W

PHOTOGRAPHIC DOCUMENTATION

Date of photography: March 31, 2011 & December 2, 2011

View of the stone with the west side partially exposed. March 31, 2011.



View from above, showing the stone and the hole drilled into the top. December 2, 2011.



View from the west, looking across the stone and east along County Road 300 South.



View from the north, looking across the stone and south to the concrete post at the terminus of a north-south fence.



For details and documentation, refer to related sheet "Section Corner Record."

SECTION CORNER RECORD

SW 750-200

BOONE COUNTY SURVEYOR'S OFFICE

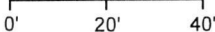
State Plane grid coordinates NAD83 (2011):
North: 1705676.41 East: 3114637.95 (U.S. survey feet)

Type of monument: Harrison, 4" disk 'Section Corner'
Depth: Six inches below adjacent road surface

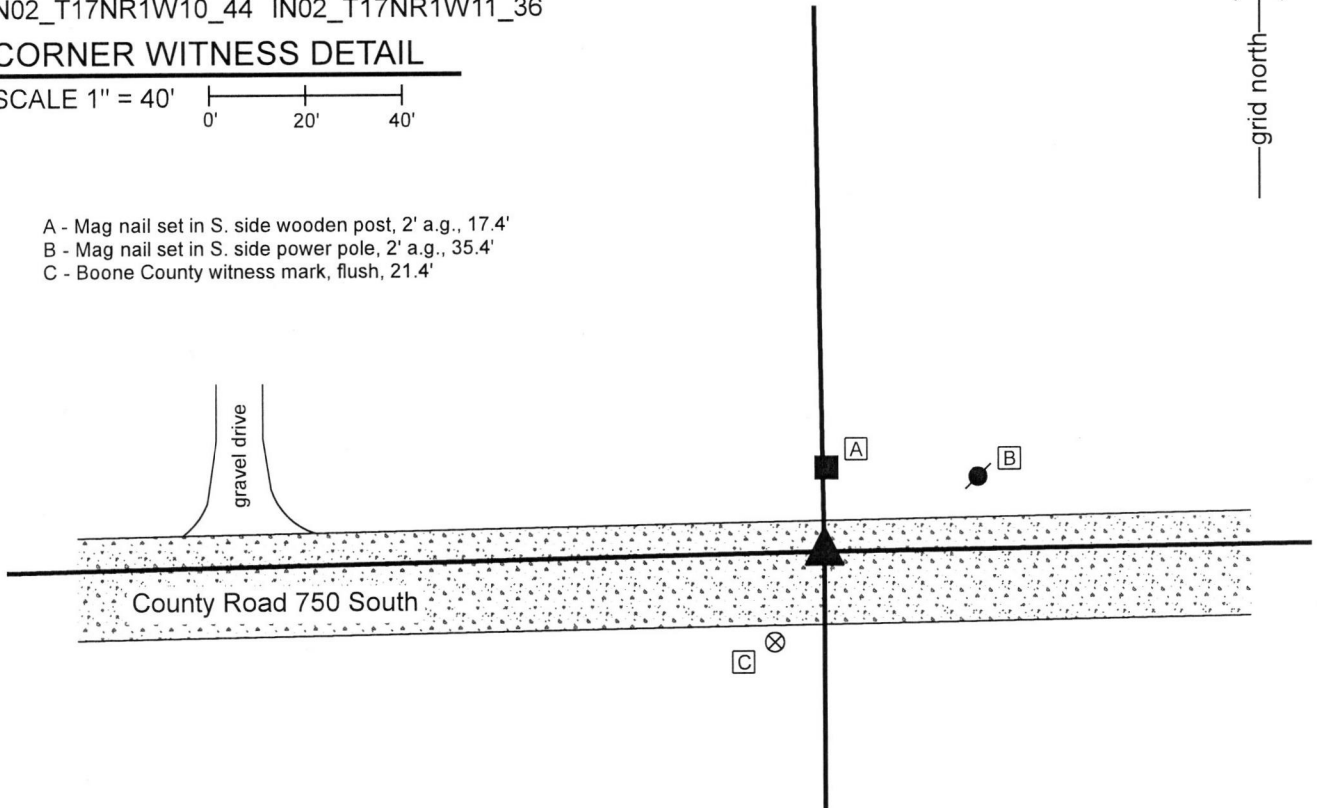
Indiana tie card references:
IN02_T17NR1W10_44 IN02_T17NR1W11_36

CORNER WITNESS DETAIL

SCALE 1" = 40'



- A - Mag nail set in S. side wooden post, 2' a.g., 17.4'
- B - Mag nail set in S. side power pole, 2' a.g., 35.4'
- C - Boone County witness mark, flush, 21.4'

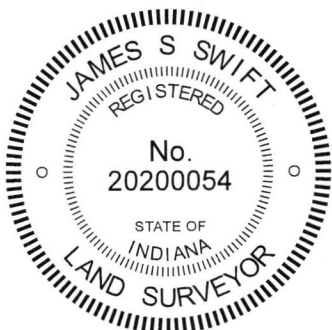


The Harrison monument was set in place of a stone found.

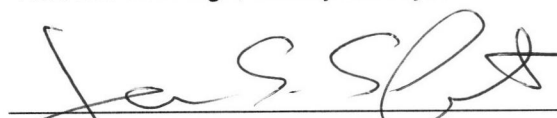
A BCS record of February 23-25, 1858 states, with respect to this corner, "reest. from old wit trees. Rock 12,14." No recent BCS tie cards were found referencing this corner.

Excavation was performed at this corner on November 20, 2019. Prior to excavation, a vertical section of 1/2 inch diameter rebar was found at 6 inches deep in the east-west roadway, approximately in-line with an old post on the north side of the road. Excavation revealed the stone described in the 1858 record found at 10 inches deep, west of the rebar. The stone was found to be 14 inches E-W by 12 inches N-S by 10 inches tall. The top of the stone was flat and horizontal with no evident marks and no specific high point. It was distinctly oriented in cardinal directions and embedded in the clay layer at the bottom of the road bed. The top, center point of the stone was held as the specific location of the corner. The stone was removed and replaced with a Harrison monument. The rebar, removed during excavation, had been 1.0 foot east and 0.6 foot south of the point held as the corner and monumented with the Harrison.

This corner was originally established as a wood post in 1820.




Kenneth E. Hedge, County Surveyor


James S. Swift, IN LS 20200054

December 11, 2019

Harrison Township

Section 10 T17N, R1W	Section 11 T17N, R1W
-------------------------	-------------------------

SECTION CORNER RECORD

SW 800-200

BOONE COUNTY SURVEYOR'S OFFICE

State Plane grid coordinates NAD83 (2011):

North: 1703009.88 East: 3114646.04 (U.S. survey feet)

Type of monument: 14"x14" Concrete Post

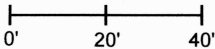
Height: Top at four feet above surrounding grade

Indiana tie card references:

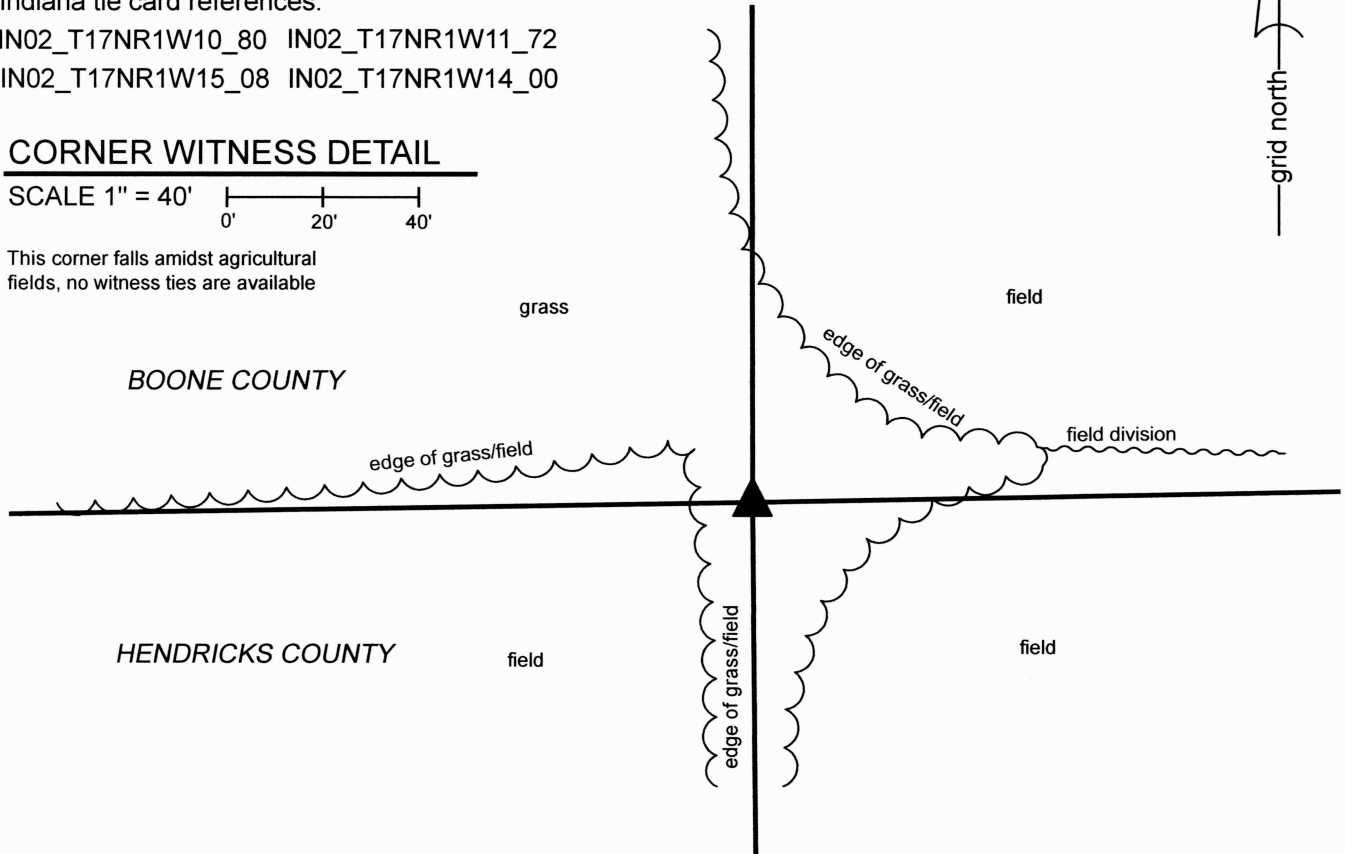
IN02_T17NR1W10_80 IN02_T17NR1W11_72

IN02_T17NR1W15_08 IN02_T17NR1W14_00

CORNER WITNESS DETAIL

SCALE 1" = 40' 

This corner falls amidst agricultural fields, no witness ties are available



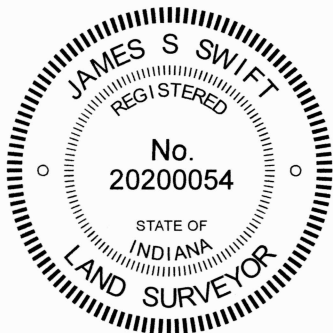
The concrete post was found in place and held as marking the corner.

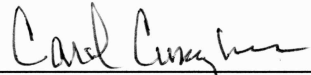
A BCS Record dated February 22-25, 1858 states, with respect to this corner, "Reest. from old wit. tree. Rock 15,16."

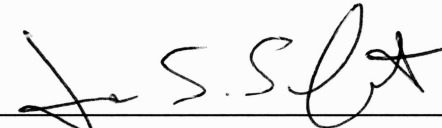
No recent BCS tie cards, nor surveys recorded in the Office of the Boone County Recorder, were found referencing this corner. Field notes provided by the Hendricks County Surveyor, dated October 16, 2013, show the concrete post as the corner.

No stone or other monument was found in the vicinity of the post. It is considered most likely that the concrete post replaced the stone set in 1858. The post fits reasonably well with the relative positions of proximate corners and represents the obvious, and only, local evidence of the corner. It is noted that the southwest and south quarter corners of Section 10 were also established during the 1858 survey. The center of the concrete post falls only 1.5 feet north of the easterly prolongation of the south line of the southwest quarter of Section 10, hence the currently held positions of the three corners monumented in 1858 all fall very nearly along a straight line.

This corner was originally established as a wood post in 1820.




 Carol Cunningham, County Surveyor


 James S. Swift, IN LS 20200054
 March 29, 2024

Harrison Township Boone County

Section 10 T17N, R1W	Section 11 T17N, R1W
Section 15 T17N, R1W	Section 14 T17N, R1W

Union Township Hendricks County

Middle Township Hendricks County

SECTION CORNER RECORD

BOONE COUNTY SURVEYOR'S OFFICE

SW 800-250

State Plane grid coordinates NAD83 (2011):
 North: 1702968.46 East: 3111998.04 (U.S. survey feet)

Type of monument: Harrison, 4" disk 'Section Corner'
 Depth: Two inches below adjacent road surface

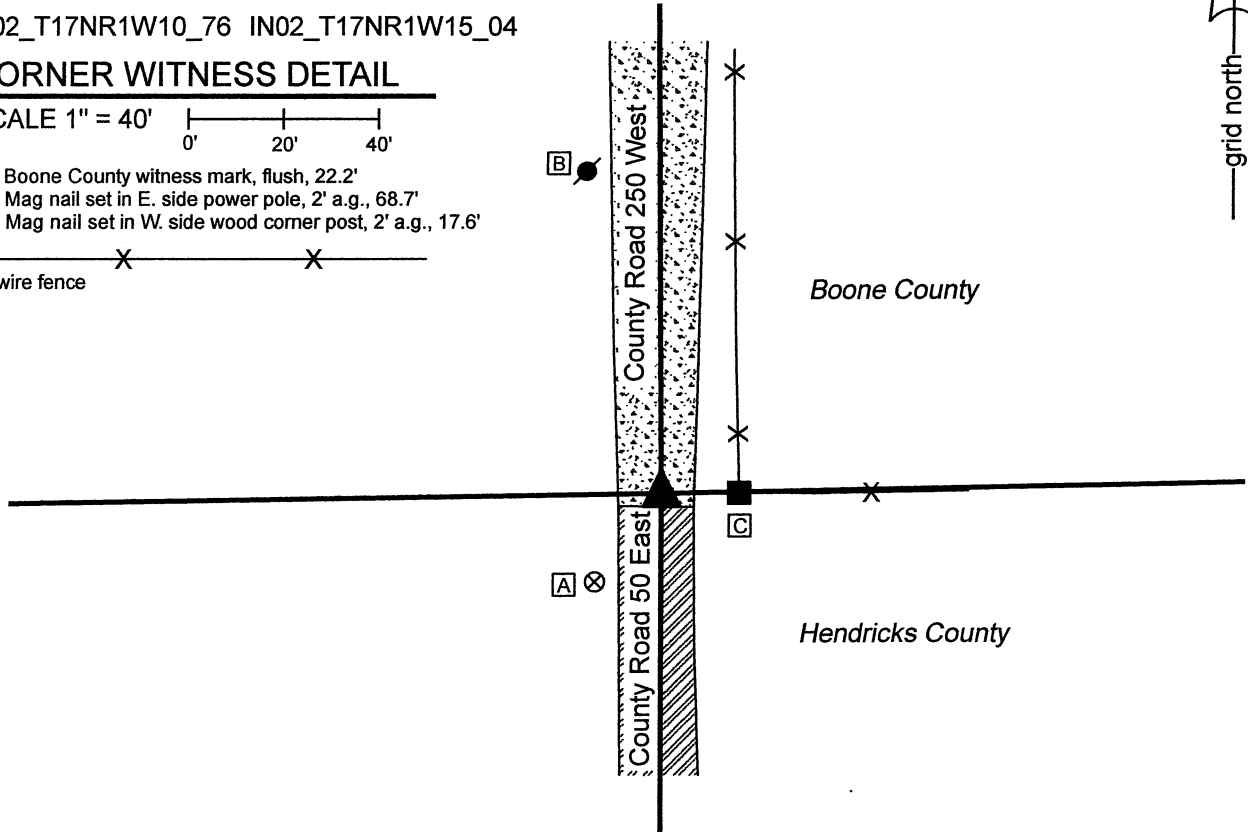
Indiana tie card references:
 IN02_T17NR1W10_76 IN02_T17NR1W15_04

CORNER WITNESS DETAIL

SCALE 1" = 40'

- A - Boone County witness mark, flush, 22.2'
- B - Mag nail set in E. side power pole, 2' a.g., 68.7'
- C - Mag nail set in W. side wood corner post, 2' a.g., 17.6'

- wire fence

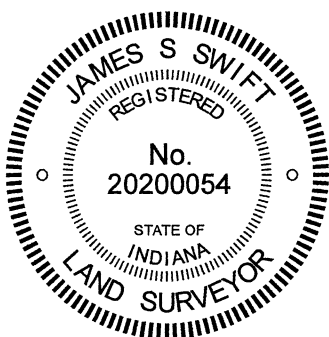


The Harrison monument was set over a stone found.

A BCS record of February 23-25, 1858 states, with respect to this corner, "Post from trees." No recent BCS tie cards were found referencing the corner. A Record of Corner dated 2013 provided by the Hendricks County Surveyor states that a 10x12x20-inch stone was found and lowered to a depth of 18 inches.

This corner was excavated on April 30, 2021. Prior to excavation, the position of the corner shown on the Hendricks County record was determined with respect to distance ties shown on that record. No surface monument was visible and sufficient metal slag was found in the road to obscure any metal readings of a subsurface iron monument. The Hendricks County record did not mention a monument set above the stone. Excavation revealed a 12-inch length of rebar with a metal cap stamped 'Hendricks County Surveyor' found at 4 inches deep. The rebar was removed and further excavation revealed a stone with a distinct etched "+" mark at 18 inches deep, per the Hendricks County record. With the top four inches exposed, the stone measured 10 inches N-S by 6 inches E-W. The stone was held as marking the corner and a Harrison monument was set directly over the etched mark on the stone. It is noted that in 2011, prior to excavation by Hendricks County, a railroad spike of unknown origin had been found 1.4 feet east of the position of the mark on the stone. The railroad spike is no longer present.

This corner was originally established as a wood post in 1820.



Kenneth E. Hedge, County Surveyor

James S. Swift, IN LS 20200054
 June 1, 2021

Harrison
 Township
 Boone
 County

Section 10
 T17N, R1W

Union
 Township
 Hendricks
 County

Section 15
 T17N, R1W