

# SECTION CORNER RECORD

SE 100-200

## BOONE COUNTY SURVEYOR'S OFFICE

State Plane grid coordinates NAD83 (NSRS 2007):

North: 1740642.23 East: 3135205.97 (U.S. survey feet)

Type of monument: Harrison, 4" disk 'Section Corner'

Depth: One inch below adjacent road surface

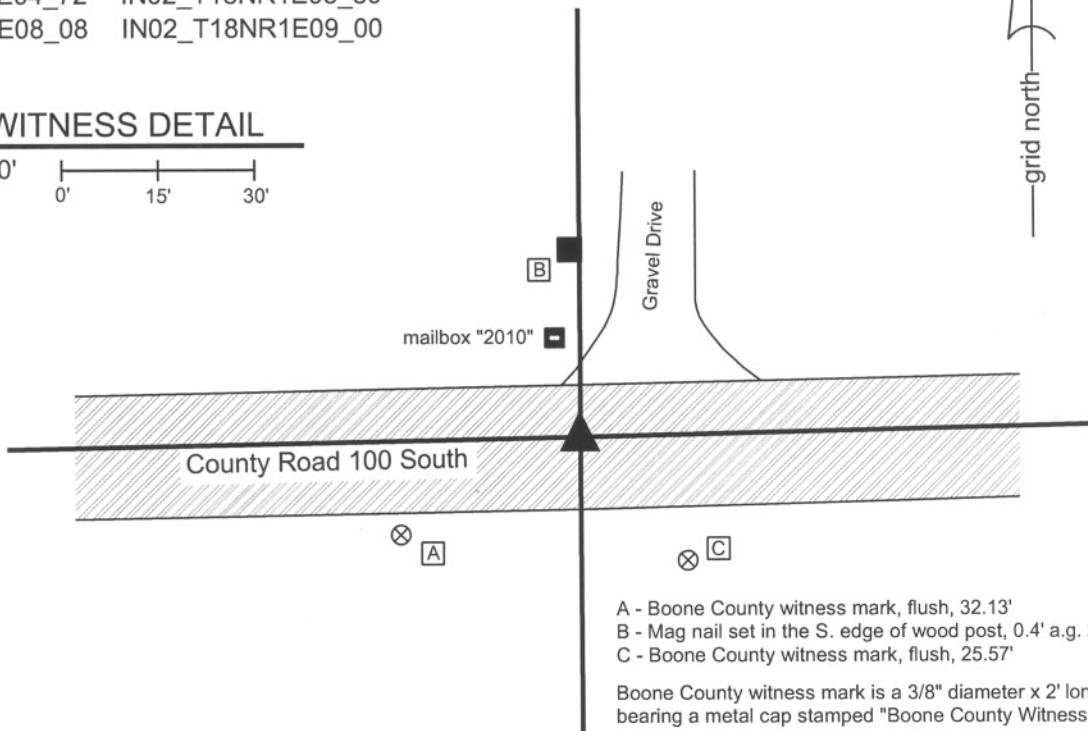
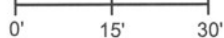
Indiana tie card references:

IN02\_T18NR1E04\_72 IN02\_T18NR1E05\_80

IN02\_T18NR1E08\_08 IN02\_T18NR1E09\_00

### CORNER WITNESS DETAIL

SCALE 1" = 30'



- A - Boone County witness mark, flush, 32.13'
- B - Mag nail set in the S. edge of wood post, 0.4' a.g. 27.38'
- C - Boone County witness mark, flush, 25.57'

Boone County witness mark is a 3/8" diameter x 2' long rebar bearing a metal cap stamped "Boone County Witness Point."

The harrison monument was set over a stone found.

A BCS record of February 9, 1887 states "Re-est. by measure from H-H sec. 9. Set Rock 4,14,19 +" A BCS tie card dated August 16, 1967 shows the corner but makes no mention of a monument. A BCS reference sheet dated July 8, 1989 discusses uncertainties associated with a PK nail found in the vicinity of the corner. A BCS tie card dated June 20, 1991 shows the corner as a railroad rail found. A BCS tie card dated October 21, 2005 shows the corner as a harrison monument with no documentation of source.

This corner was excavated on October 19, 2009. Prior to excavation, a harrison monument was visible at the surface of the road. Excavation revealed a steel railroad rail found on end at 12 inches deep. A rebar was also found on the southwest side of the railroad rail. The harrison monument had been over the rebar. Both the rebar and the rail were removed. A stone was found at 18 inches deep, 1.6 feet North and 2.6 feet East of the position of the harrison monument. The stone is completely embedded in the clay layer below the road bed, with the top of the stone at the top of the clay layer. The stone is 14 inches tall and is not oriented with the cardinal directions. The top of the stone measures 12 inches in the NE-SW dimension and a spur at the bottom of the stone on the southwest side protrudes 2 inches for a total 14 inches. The top of the stone measures 6 inches wide in the NW-SE dimension and a spur on the southeast side protrudes for 3 inches for a total of 9 inches. No visible marks were found. The written record states that the stone is 4,14,9. The stone found measures 14,14,9. The found stone also fits well with the local evidence in the E-W dimension in the form of an old post on the north side of the road. The harrison, railroad rail and rebar were all west of this post. The stone was accepted as the corner and a harrison monument was set over the top center of the main ridge of the stone.

This corner was originally established as a wood post in June, 1820.



*Kenneth E. Hedge*  
 Kenneth E. Hedge, County Surveyor

*James S. Swift*  
 James S. Swift, IN LS 20200054  
 July 14, 2010

Center Township

Section 5 T18N, R1E	Section 4 T18N, R1E
Section 8 T18N, R1E	Section 9 T18N, R1E

PHOTOGRAPHIC DOCUMENTATION

Date of photography: October 19, 2009

View of the stone as first exposed.



View of the stone more fully exposed.  
View from the west.



View from the south, looking across the stone (hidden behind the corner of pavement), and north to the old post on the north side of the road.



Similar view to above. View from the southwest.



Close-up of the stone as found and exposed.



For details and documentation, refer to related sheet "Section Corner Record."

# SECTION CORNER RECORD

SE 100-250

## BOONE COUNTY SURVEYOR'S OFFICE

State Plane grid coordinates NAD83 (NSRS 2007):

North: 1740700.63 East: 3137860.28 (U.S. survey feet)

Type of monument: Harrison, 4" disk 'Section Corner'

Depth: One inch below adjacent road surface

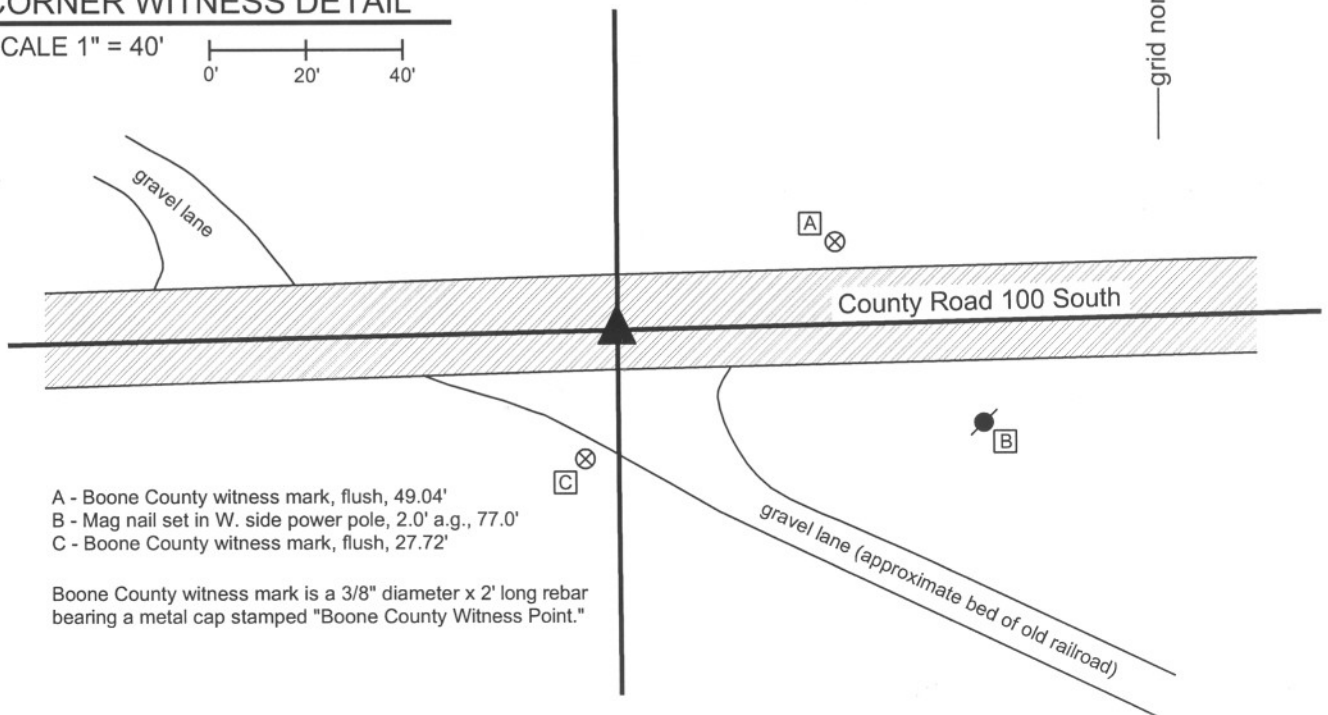
Indiana tie card references:

IN02\_T18NR1E03\_76

IN02\_T18NR1E10\_04

### CORNER WITNESS DETAIL

SCALE 1" = 40'



- A - Boone County witness mark, flush, 49.04'
- B - Mag nail set in W. side power pole, 2.0' a.g., 77.0'
- C - Boone County witness mark, flush, 27.72'

Boone County witness mark is a 3/8" diameter x 2' long rebar bearing a metal cap stamped "Boone County Witness Point."

The harrison monument was set in place of a harrison monument found.

A BCS record dated May 21, 1870 states "Re from the stump of Red Oak. Set a Rock 20,9,4 +. One under 5,3,3 +." A BCS tie card dated October 21, 2005 shows the corner as a harrison monument with no documentation of source.

This corner was excavated on October 19, 2009. Prior to excavation, a harrison monument was found at the surface. It is noted that this area is at the east edge of an abandoned railroad bed. The railroad bed is elevated on both sides of the road and clearly would have been elevated as it crossed the road prior to excavation work which smoothed the grade of the road. The probable area for the corner falls within the area which would have been fill when the bed crossed the road in elevated form. No monuments were found below the harrison or in the vicinity. The material cross-section of the road is 4 inches or asphalt over 10 inches of #53 road stone. Large #2 stone was found below this and extends to at least 20 inches deep. It is apparent that this area has been disturbed in the past and the stone bed of the road extends to below the depth at which at section corner stone would likely be found. The harrison monument was set in place of the previously existing harrison.

This corner was originally established as a wood post in June, 1820.



*Kenneth E. Hedge*  
 Kenneth E. Hedge, County Surveyor

*James S. Swift*  
 James S. Swift, IN LS 20200054  
 July 14, 2010

Center Twp

Section 4  
T18N, R1E

Section 9  
T18N, R1E

# SECTION CORNER RECORD

SE 100-300

## BOONE COUNTY SURVEYOR'S OFFICE

State Plane grid coordinates NAD83 (NSRS 2007):

North: 1740760.62 East: 3140515.09 (U.S. survey feet)

Type of monument: Harrison, 4" disk 'Section Corner'

Depth: One inch below adjacent road surface

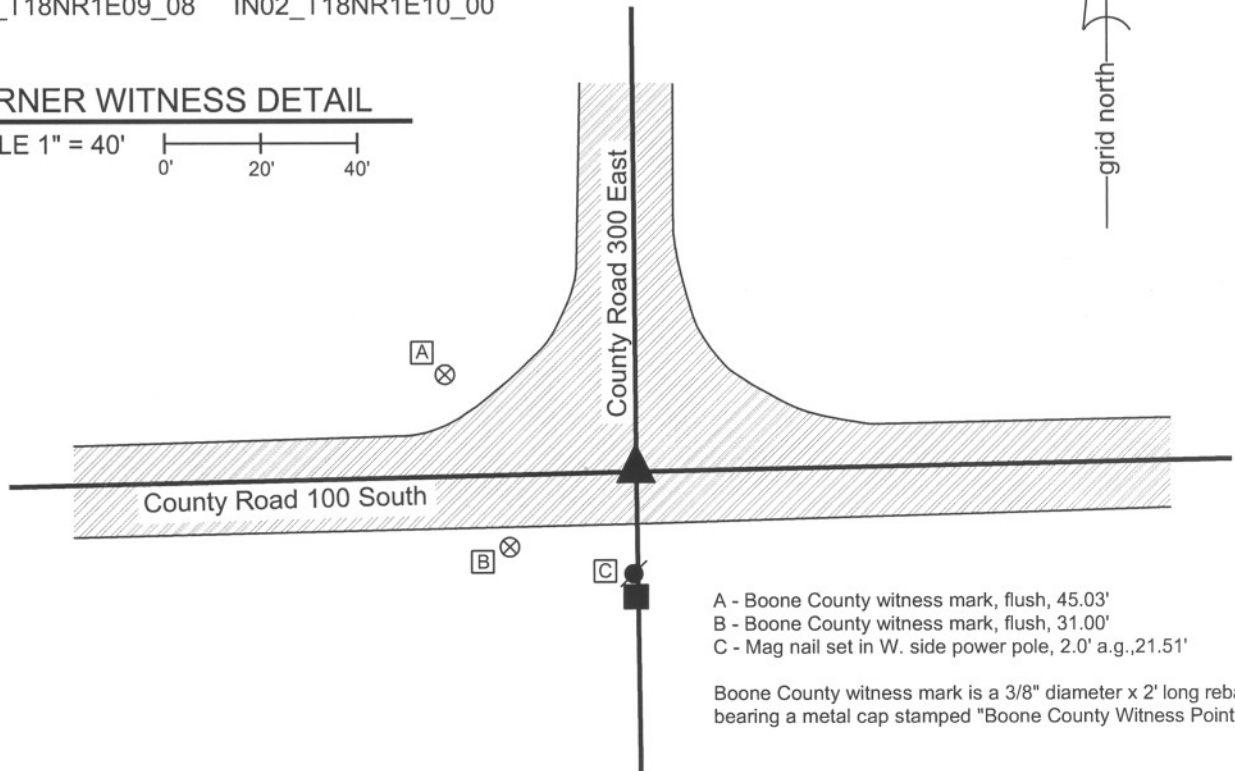
Indiana tie card references:

IN02\_T18NR1E03\_72 IN02\_T18NR1E04\_80

IN02\_T18NR1E09\_08 IN02\_T18NR1E10\_00

### CORNER WITNESS DETAIL

SCALE 1" = 40'



- A - Boone County witness mark, flush, 45.03'
- B - Boone County witness mark, flush, 31.00'
- C - Mag nail set in W. side power pole, 2.0' a.g., 21.51'

Boone County witness mark is a 3/8" diameter x 2' long rebar bearing a metal cap stamped "Boone County Witness Point."

The harrison monument was set over the etched "+" on a stone found.

A BCS record of February 19, 1876 states "Reestablished at the intersection of lines. Set 2 rocks. Lower one 9,9,12 + on top. Upper one 7,12,14 + on top side." A BCS tie card dated October 1975 states "Stone found + rail 6". A BCS information sheet dated August 5, 1989 calls for a railroad rail found. A BCS tie card dated June 20, 1991 shows the corner as a railroad rail found. A BCS tie card dated October 15, 2005 shows the corner as a harrison monument with no documentation of source.

This corner was excavated on August 14, 2009. Prior to excavation a harrison monument was visible at the surface. Excavation revealed a railroad rail found at 12 inches deep. The harrison monument had been 0.2 feet west of the rail. A stone was found at 20 inches deep north and west of the rail. This stone was entirely within the road material and did not match the record descriptions. It was removed. Another stone was found directly below at 25 inches deep. This stone is 14 inches EW by 12 inches NS by 7 inches thick, matching the record description for the upper stone as described in the 1876 record. This stone was also removed. The record lower stone was found below it at 33 inches deep. This stone is 12 inches NS by 9 inches EW and fully embedded in the clay layer below the base of the road. The total height was not measured. A vague chiseled "+" was found at the top, high point of the stone, towards the southeast corner of the stone. The harrison monument was set over the chiseled "+". The old harrison monument had been 0.6 foot south and 0.2 foot east of the chiseled "+" on the stone.

This corner was originally established as a wood post in June, 1820.



*Kenneth E. Hedge*  
 Kenneth E. Hedge, County Surveyor

*James S. Swift*  
 James S. Swift, IN LS 20200054  
 July 14, 2010

Center Township

Section 4 T18N, R1E	Section 3 T18N, R1E
Section 9 T18N, R1E	Section 10 T17N, R1E

PHOTOGRAPHIC DOCUMENTATION

Date of photography: August 14, 2009

View of the railroad rail as first exposed.



View of the upper most stone as first exposed.



View of the second stone found, being the upper stone described in the 1876 record.



View of the third stone found, being the lower stone described in the 1876 record.



Close-up of the lower record stone.



The lower record stone. The point of the chaining pin marks the etched mark on the stone.



For details and documentation, refer to related sheet "Section Corner Record."

# SECTION CORNER RECORD

SE 150-300

## BOONE COUNTY SURVEYOR'S OFFICE

State Plane grid coordinates NAD83 (NSRS 2007):  
North: 1738112.66 East: 3140537.65 (U.S. survey feet)

Type of monument: Harrison, 4" disk 'Section Corner'  
Depth: Three inches above the adjacent ground.

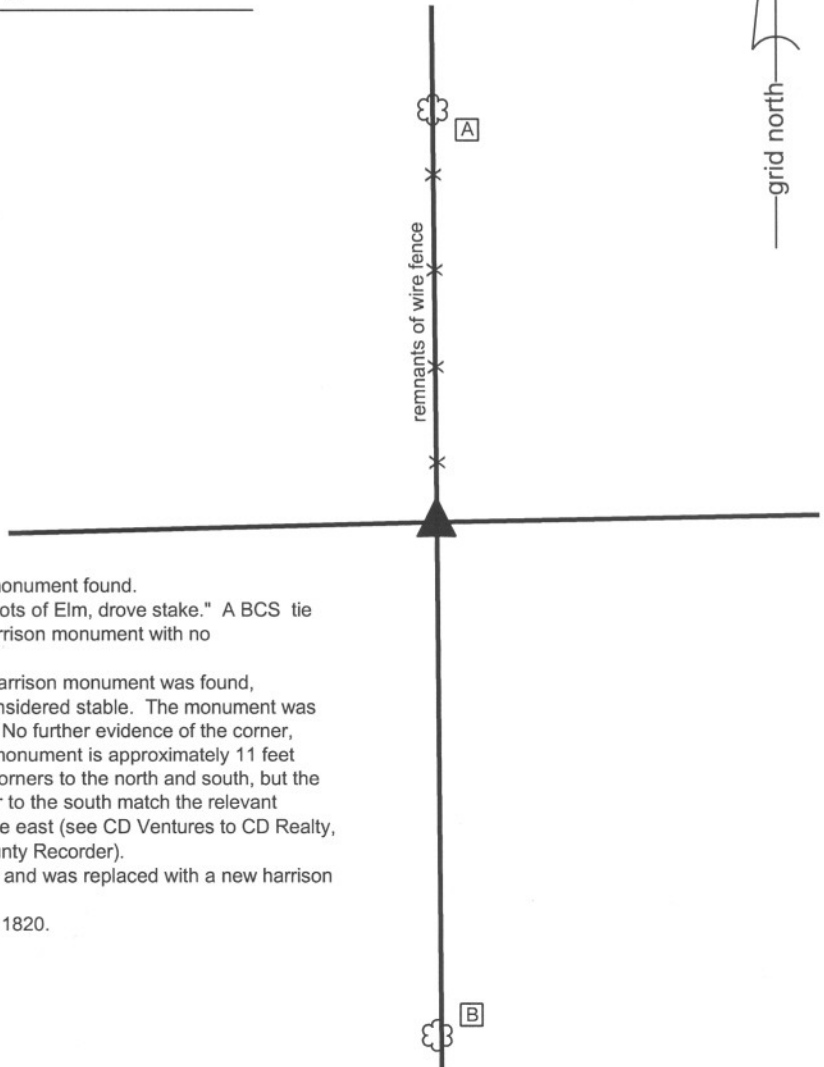
Indiana tie card references:  
IN02\_T18NR1E09\_44  
IN02\_T18NR1E10\_36



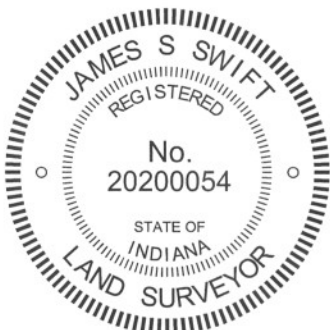
### CORNER WITNESS DETAIL

SCALE 1" = 40'

- A - South edge of 36 inch diameter Oak tree, 82.6'
- B - North edge of 27 inch diameter Oak tree, 103.4'

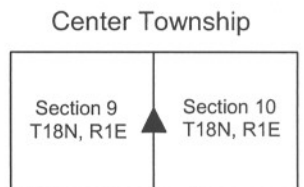


The harrison monument was set in place of a harrison monument found.  
A BCS record of October 22, 1886 states "found from roots of Elm, drove stake." A BCS tie card date November 28, 2005 shows the corner as a harrison monument with no documentation of source.  
This corner was excavated on November 15, 2010. A harrison monument was found, apparently undisturbed but set directly in dirt and not considered stable. The monument was found at the west edge of a remnant north-south fence. No further evidence of the corner, beyond the fence and the monument were found. The monument is approximately 11 feet north of the midpoint of the line connecting the section corners to the north and south, but the relative position of the monument with the section corner to the south match the relevant distance call in the land description for the property to the east (see CD Ventures to CD Realty, LLC, Instrument 9810113 in the Office of the Boone County Recorder).  
The harrison monument was held as marking the corner and was replaced with a new harrison monument set in concrete.  
This corner was originally established as a wood post in 1820.



*Kenneth E. Hedge*  
Kenneth E. Hedge, County Surveyor

*James S. Swift*  
James S. Swift, IN LS 20200054  
July 25, 2011



# SECTION CORNER RECORD

SE 200-250

## BOONE COUNTY SURVEYOR'S OFFICE

State Plane grid coordinates NAD83 (NSRS 2007):  
North: 1735379.23 East: 3137893.22 (U.S. survey feet)

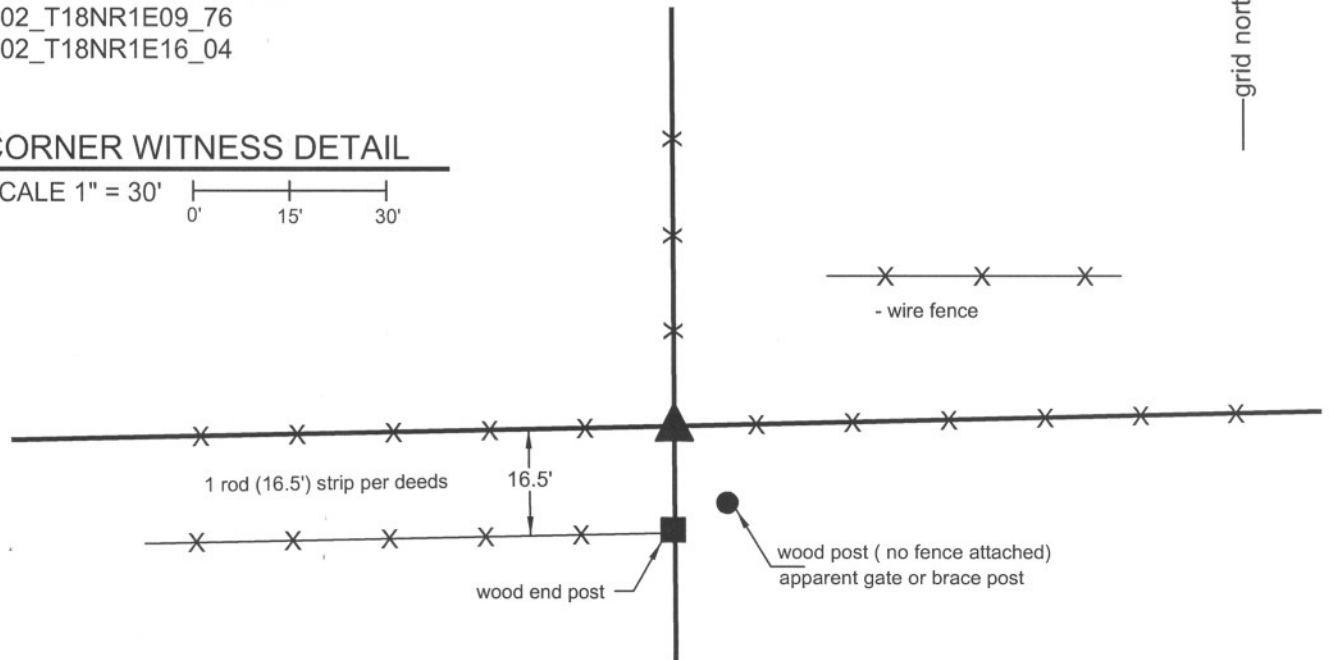
Type of monument: Harrison, 4" disk 'Section Corner'  
Depth: three inches above adjacent ground

Indiana tie card references:  
IN02\_T18NR1E09\_76  
IN02\_T18NR1E16\_04



### CORNER WITNESS DETAIL

SCALE 1" = 30'



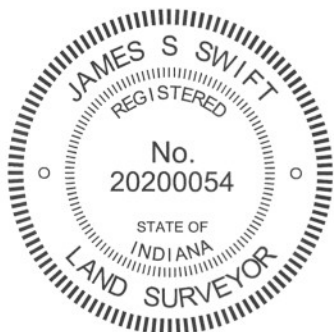
The harrison monument was set in place of a wood corner post.

A BCS record of October 22, 1886 states "Found from Ash drove a stake at corner." A BCS record of January 7, 1891 states "Reestablished by measure from 2 to 4 Sec. 16, Set rock marked +." A BCS tie card dated November 28, 2005 shows the corner as a harrison monument with no documentation of source.

The corner was excavated during the fall of 2010, with the final monument set on October 25, 2010. A harrison monument was found situated loosely in dirt. The position of this monument did not fit with the 2005 ties or representation of the position of the corner, though the coordinates for the found monument approximately match the coordinates shown on the tie card. The existing monument was 4 feet east and approximately 1.5 feet south of the ancient corner post at the intersection of fences to the north, east and west. The company which set the monument no longer exists and no information was gained as to either why the monument was set at that particular position, or how to resolve the discrepancies in between the tie card and the physical monument. It is noted that a substantial amount of wood was lying in the area, some of it in the form of a large, fallen ash tree and that significant effort was required to find and confirm the position of the actual corner post at the intersection of the three fences. It is possible that the position of the existing harrison was the result of a less thorough investigation of the situation at the corner. The erroneous representation of the corner on the tie card may be an indication that the large amount of debris, mostly in the form of down wood, created sufficient visual obstruction to create confusion as to the specific layout of the old fences and location of the primary corner post.

General excavation of the area did not produce a stone with any particular markings. Given the uncertainties with the existing harrison monument and the unexplained variation from substantial evidence of occupation, the existing harrison was removed and the ancient corner post was held as the best available evidence of the corner. The post was cut off at approximately 30 inches below ground and a new harrison monument was set in concrete over the bottom of the post.

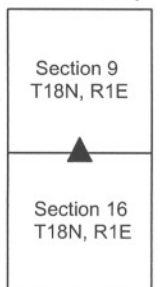
This corner was originally established as a wood post in 1820.



*Kenneth E. Hedge*  
Kenneth E. Hedge, County Surveyor

*James S. Swift*  
James S. Swift, IN LS 20200054  
July 25, 2011

Center Twp



PHOTOGRAPHIC DOCUMENTATION

Date of photography: October 21-25, 2010

View of the vicinity of the corner after preliminary cleaning. See below for more information.



View of the corner post after the top portion was removed. Note the brace wires, a feature typically limited to corner posts.



Same photo as above, with annotation. Note the corner post is leaning south and west. The post was found to be rotten at ground level, but the portion below ground was clearly identifiable.

old corner post



harrison monument  
found set loosely in dirt.

The base of the corner post after all wire was removed from around it.



View of the corner after the harrison monument was set over the base of the old corner post.



For details and documentation, refer to related sheet "Section Corner Record."



# SECTION CORNER RECORD

SE 200-300

## BOONE COUNTY SURVEYOR'S OFFICE

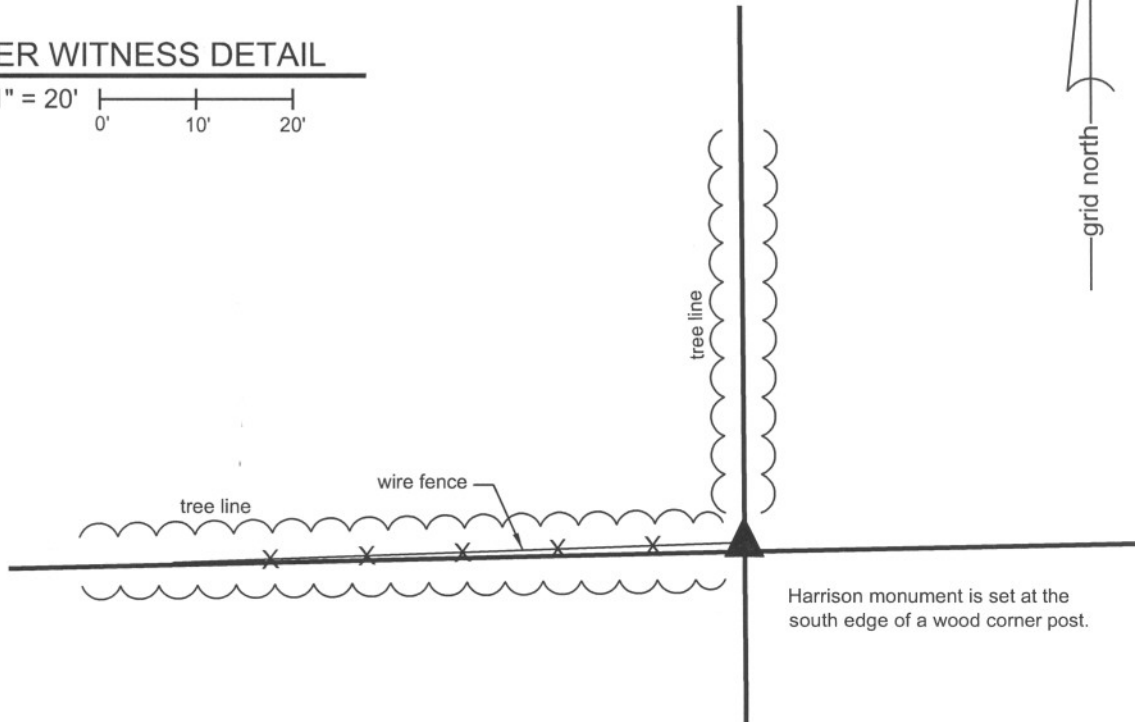
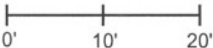
State Plane grid coordinates NAD83 (NSRS 2007):  
North: 1735442.39 East: 3140559.96 (U.S. survey feet)

Type of monument: Harrison, 4" disk 'Section Corner'  
Depth: three inches above adjacent ground

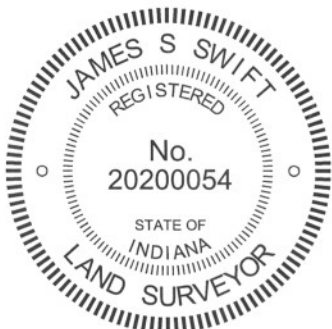
Indiana tie card references:  
IN02\_T18NR1E09\_80 IN02\_T18NR1E10\_72  
IN02\_T18NR1E16\_08 IN02\_T18NR1E15\_00

### CORNER WITNESS DETAIL

SCALE 1" = 20'



The harrison monument was set in place of a harrison monument found.  
A BCS record of October 22, 1886 states "Found from roots of Oak set a stone at cor." A BCS tie card dated November 28, 2005 shows the corner as a harrison monument with no documentation of source.  
This corner was excavated and monumented on October 22, 2010. A harrison monument was found at the southwest corner of the base of a wood corner post per the 2005 tie card. Numerous stones of a variety of sizes were found around the corner post, none of which had specific identifiable markings or which appeared to represent the section corner. A large rock found at the southeast corner of the post appeared to be a brace rock. The 2005 tie card does not document why the harrison monument was set at the base of the corner post or why the post itself was not held as the corner. Given the presence of the harrison monument and its immediate proximity to the post, the monument was held as the corner. The monument was reset in the same position in a more stable manner.  
The land adjacent to this corner is utilized as agricultural land and no acceptable witness ties were available. An orange fiberglass witness post was set at the side of the harrison monument to facilitate detection by field surveyors.  
This corner was originally established as a wood post in 1820.



*Kenneth E. Hedge*  
Kenneth E. Hedge, County Surveyor

*James S. Swift*  
James S. Swift, IN LS 20200054  
July 25, 2011

Center Township

Section 9 T18N, R1E	Section 10 T18N, R1E
Section 16 T18N, R1E	Section 15 T18N, R1E