

SECTION CORNER RECORD

SE 100-700

BOONE COUNTY SURVEYOR'S OFFICE

State Plane grid coordinates NAD83 (NSRS 2007):

North: 1741162.79 East: 3161869.83 (U.S. survey feet)

Type of monument: Harrison, 4" disk 'Section Corner'

Depth: Eight inches below adjacent gravel road surface

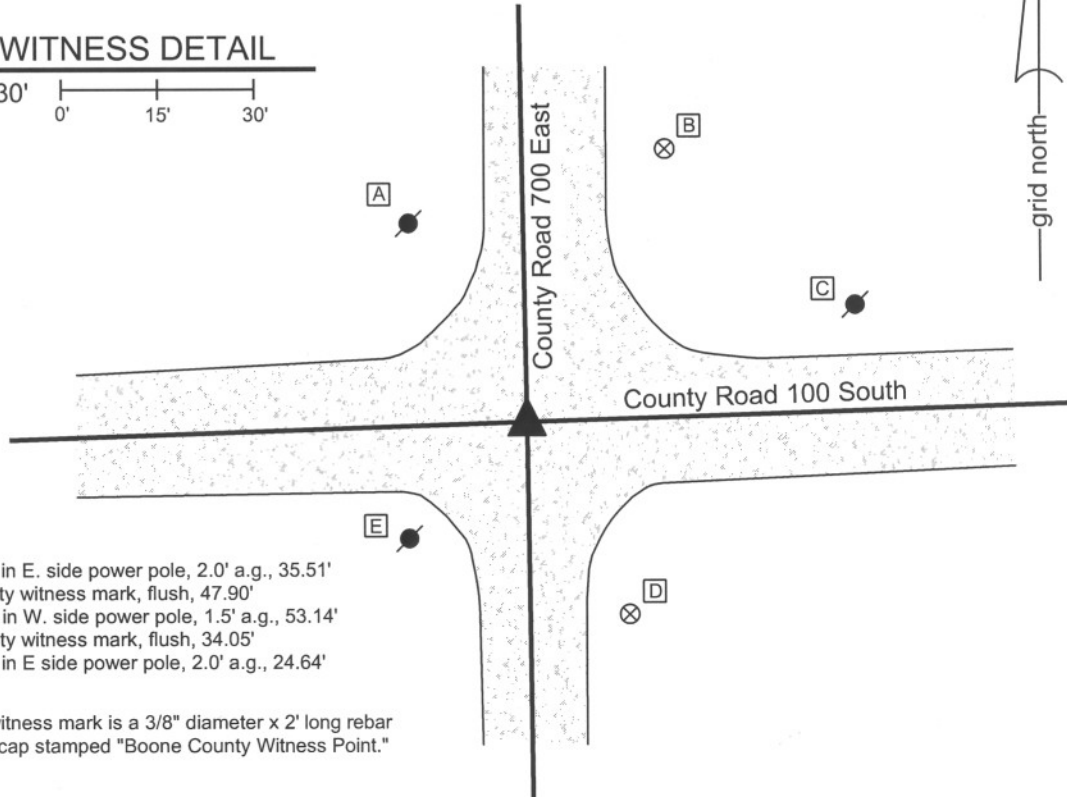
Indiana tie card references:

IN02_T18NR2E05_72 IN02_T18NR2E06_80

IN02_T18NR2E07_08 IN02_T18NR2E08_00

CORNER WITNESS DETAIL

SCALE 1" = 30'



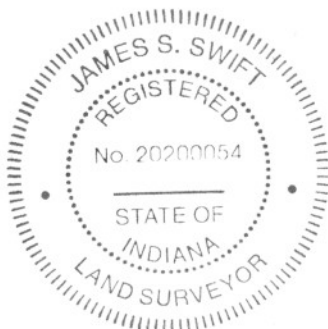
- A - Mag nail set in E. side power pole, 2.0' a.g., 35.51'
- B - Boone County witness mark, flush, 47.90'
- C - Mag nail set in W. side power pole, 1.5' a.g., 53.14'
- D - Boone County witness mark, flush, 34.05'
- E - Mag nail set in E side power pole, 2.0' a.g., 24.64'

Boone County witness mark is a 3/8" diameter x 2' long rebar bearing a metal cap stamped "Boone County Witness Point."

The harrison monument was set in place of a rebar found.

A BCS record of February 27, 1871 states "Re Established from Oak stump. Set a Rock 14.12.10 marked + (under bridge)." A BCS tie card dated June 7, 1991 shows the corner as a 5/8 inch rebar found. This corner was excavated on May 28, 2009. Prior to excavation a 5/8 inch rebar was found at 3 inches below grade. The rebar was slightly bent at the top but the horizontal position of the main shaft was detectable. The reference in the 1871 to "under bridge" is a confusing reference as it is not clear where or why there might have been a bridge at this intersection. Excavation revealed no more monuments of any kind. An area 7 feet N-S by 11 feet E-W, centered on the found rebar at the approximate center of the intersection, was excavated to at least 30 inches deep and the clay layer below the main road bed. Remnants of an old red clay tile were found at 2 feet, directly under the rebar. The tile appeared to bear in a N-S direction. The presence of the tile may explain the absence of the stone, as the stone may have been removed during the installation of the tile. The harrison monument was set in the horizontal position of the rebar.

This corner was originally established as a wood post in July, 1821.



Kenneth E. Hedge
 Kenneth E. Hedge, County Surveyor

James S. Swift
 James S. Swift, IN LS 20200054
 July 14, 2010

Worth Twp Union Twp

Worth Township	Section 6 T18N, R2E	Section 5 T18N, R2E
	Section 7 T18N, R2E	Section 8 T18N, R2E

SECTION CORNER RECORD

SE 100-750

BOONE COUNTY SURVEYOR'S OFFICE

State Plane grid coordinates NAD83 (NSRS 2007):
North: 1741245.75 East: 3164507.86 (U.S. survey feet)

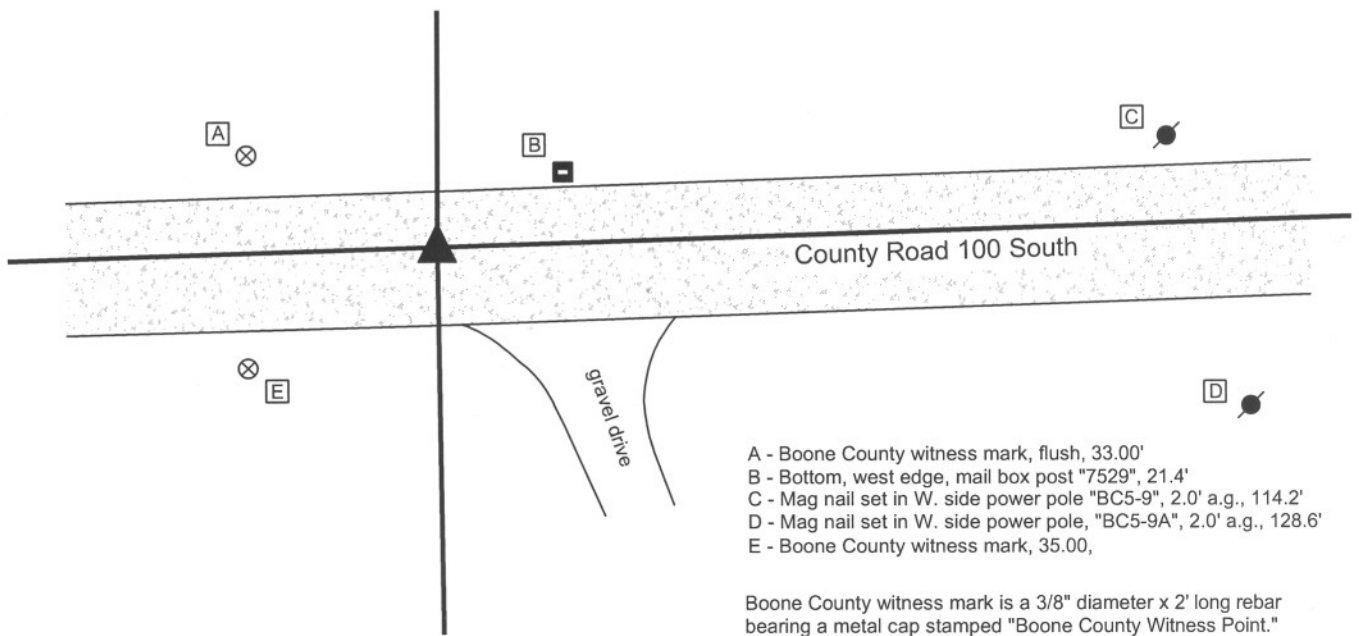
Type of monument: Harrison, 4" disk 'Section Corner'
Depth: Eight inches below gravel road surface

Indiana tie card references:
IN02_T18NR2E05_72
IN02_T18NR2E08_04



CORNER WITNESS DETAIL

SCALE 1" = 30'



The harrison monument was set in place of a 5/8 inch diameter smooth shafted iron pin found. A BCS record of October 9-10, 1877 states "Reestablished. Set Rock 16,12,10 marked +." A BCS record of August 22, 1907 states "found rock set." This corner was excavated on June 4, 2009. Prior to excavation the aforementioned iron pin was found at 4 inches below grade. Excavation revealed no further evidence of the corner. The area of excavation was 8 feet E-W, centered on the iron pin and 9 feet N-S, extended 3 1/2 feet north and 5 1/2 feet south of the iron pin. It is noted that the road in this area is below the grade of the surrounding fields and that the entire road bed is only 10 inches deep, at which point the clay layer begins. If the stone mentioned in the record were at a depth similar to many other stones found from the same time frame, it would have likely protruded out of the clay and into the bottom of the road bed by 3 or 4 inches. If this were the case, the top of the stone would have been only 6 or 7 inches deep, well within the range of the blade or teeth of a road grader. This corner was originally established as a wood post in July, 1821.



Kenneth E. Hedge
Kenneth E. Hedge, County Surveyor

James S. Swift
James S. Swift, IN LS 20200054
July 14, 2010

Union Twp

Section 5
T18N, R2E

Worth Twp

Section 8
T18N, R2E

SECTION CORNER RECORD

SE 100-800

BOONE COUNTY SURVEYOR'S OFFICE

State Plane grid coordinates NAD83 (NSRS 2007):

North: 1741327.98 East: 3167147.92 (U.S. survey feet)

Type of monument: Harrison, 4" disk 'Section Corner'

Depth: Eight inches below adjacent gravel road surface

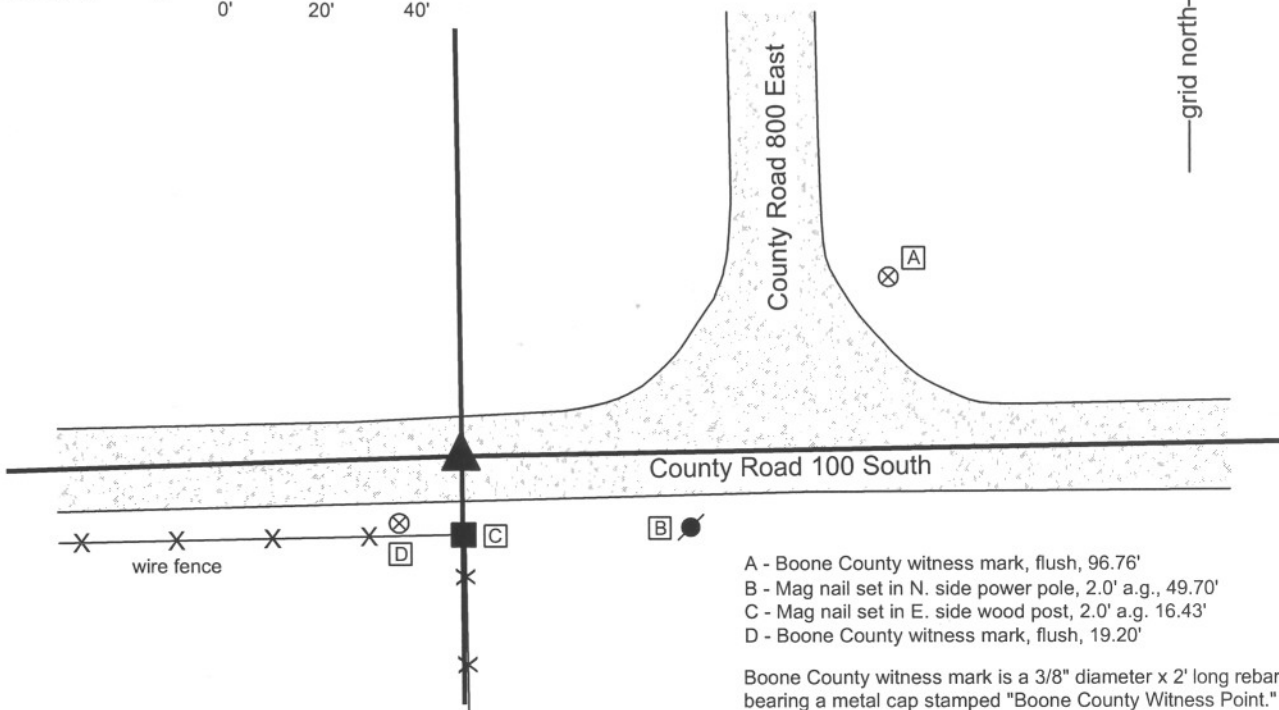
Indiana tie card references:

IN02_T18NR2E04_72 IN02_T18NR2E05_80

IN02_T18NR2E08_08 IN02_T18NR2E09_00

CORNER WITNESS DETAIL

SCALE 1" = 40'



- A - Boone County witness mark, flush, 96.76'
- B - Mag nail set in N. side power pole, 2.0' a.g., 49.70'
- C - Mag nail set in E. side wood post, 2.0' a.g., 16.43'
- D - Boone County witness mark, flush, 19.20'

Boone County witness mark is a 3/8" diameter x 2' long rebar bearing a metal cap stamped "Boone County Witness Point."

The harrison monument was set over a stone found and in place of an iron pipe found.

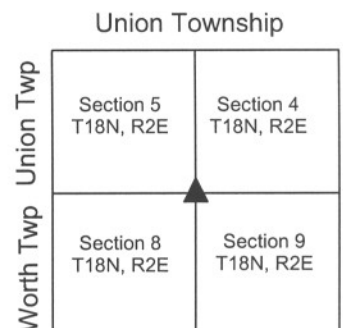
A BCS record of March 22, 1880 states "Reestablished Set Rock 17.24.20+." A BCS tie card of June 7, 1991 shows the corner as a one inch iron pipe found. This corner was excavated on May 14, 2009. Prior to excavation a one inch diameter iron pipe was found at 7 inches deep. This pipe appeared to be the same monument referred to on the 1991 tie card. Excavation revealed a large stone found at 16 inches deep. The stone is 24 inches E-W by 20 inches N-S and measures 17 inches tall on the south side, matching the dimensions described in the 1880 record. No specific markings were found on the stone. The pipe was over the stone, bent slightly and leaning over the top of the stone. The top of the pipe was approximately 2 inches north of the approximate top center of the stone. The position of the pipe was held as the specific position of the corner and the harrison monument was set at this position, over the stone but slightly north of the vague, approximate top center. The pipe was removed during excavation.

This corner was established as a wood post in July, 1821.



Kenneth E. Hedge
Kenneth E. Hedge, County Surveyor

James S. Swift
James S. Swift, IN LS 20200054
July 14, 2010



PHOTOGRAPHIC DOCUMENTATION

Date of photography: May 14, 2009

View of the stone as first exposed.



Brandon Miller holding the iron pipe in the approximate position as it was originally found and oriented, prior to removal.



View from the east, looking across the stone and west along County Road 100 South.



View from the north, looking across the stone and south along the fence to the south.



For details and documentation, refer to related sheet "Section Corner Record."

SECTION CORNER RECORD

BOONE COUNTY SURVEYOR'S OFFICE


SE 150-700

State Plane grid coordinates NAD83 (NSRS 2007):
 North: 1738509.72 East: 3161906.36 (U.S. survey feet)

Type of monument: Harrison, 4" disk 'Section Corner'
 Depth: 4 inches below adjacent gravel road surface

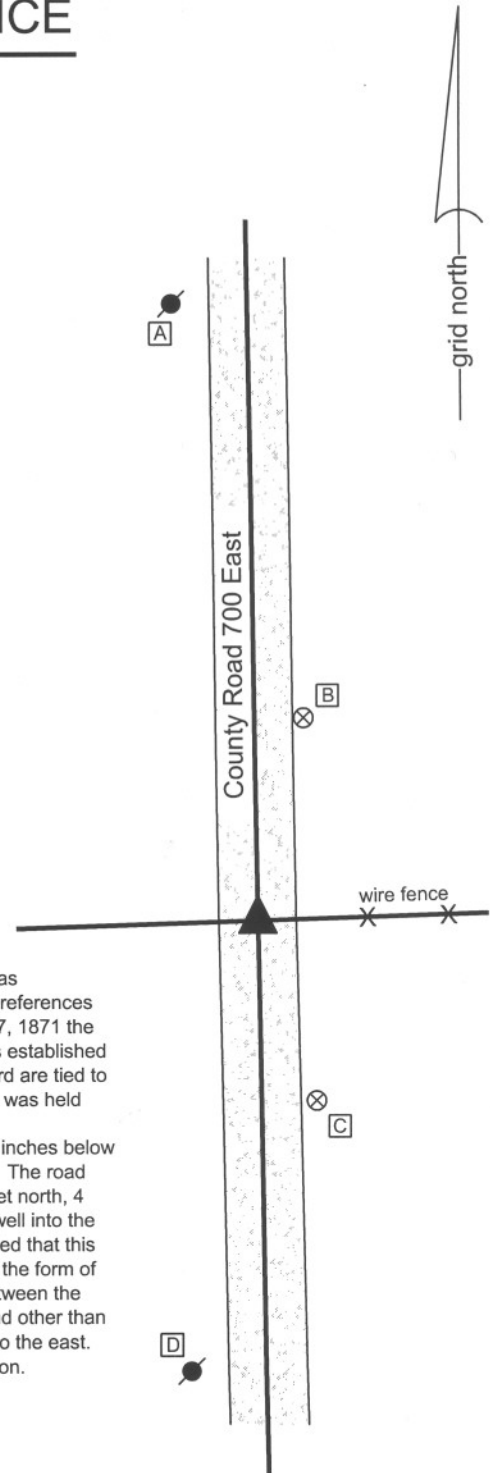
Indiana tie card references:
 IN02_T18NR2E07_44
 IN02_T18NR2E08_36

CORNER WITNESS DETAIL

SCALE 1" = 40'


- A - Mag nail set in S.E. side, power pole, 2.0' a.g., 128.4'
- B - Boone County witness mark, flush, 43.30'
- C - Boone County witness mark, flush, 39.42'
- D - Mag nail set in N.E. side power pole, 2.0' a.g., 93.0'

Boone County witness mark is a 3/8" diameter x 2' long rebar bearing a metal cap stamped "Boone County Witness Point."

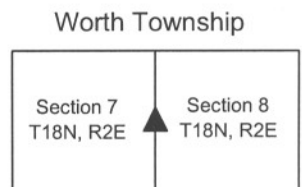


The harrison monument was set in place of a railroad rail found. A BCS tie card dated July, 1970 states "no stone, set rail" and demonstrates that the corner was established in the approximate center of the county road in line with the fence to the east. No references were found for this corner in the BCS "Surveyor's Record." Notably, in a record of February 27, 1871 the section corners to the north and south were found established and an intermediate corner was established north of the subject quarter corner. The measurements to the intermediate corner in that record are tied to the section corners and the quarter corner is not mentioned. Hence, the mile long section line was held without regard to the quarter corner. This corner was excavated on June 5, 2009. Prior to excavation a railroad rail was found at 7 inches below grade, in line with the fence to the east. Excavation revealed no other evidence of the corner. The road bed in this vicinity is gravel approximately 8 inches thick. An area extending 4 feet south, 9 feet north, 4 feet east and 5 feet west of the railroad rail was excavated to a minimum depth of 16 inches, well into the clay and below the depth at which a stone might reasonably be expected to be found. It is noted that this area of excavation encompassed probable locations for the corner based on local evidence in the form of the fence to the east and remote evidence in the form of the calculated midpoint of the line between the section corners to the north and south. As noted, no physical evidence of the corner was found other than the rail, which is in agreement with the best available evidence, being the road and the fence to the east. The harrison monument was set in the position of the rail, which was removed during excavation. This corner was originally established as a wood post in July, 1821.



Kenneth E. Hedge
 Kenneth E. Hedge, County Surveyor

James S. Swift
 James S. Swift, IN LS 20200054
 July 14, 2010



SECTION CORNER RECORD

SE 150-800

BOONE COUNTY SURVEYOR'S OFFICE

State Plane grid coordinates NAD83 (NSRS 2007):

North: 1738676.62 East: 3167166.88 (U.S. survey feet)

Type of monument: stone marked +

Depth: approximately 6 inches

Note: The stone is visible within a section of 12 inch diameter plastic storm pipe set vertically around the stone.

Indiana tie card references:

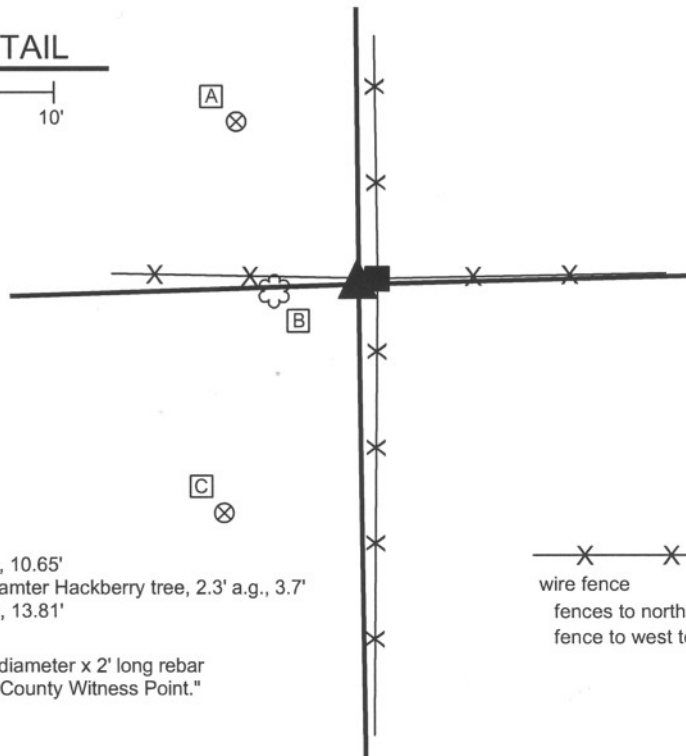
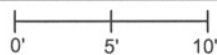
IN02_T18NR2E08_44

IN02_T18NR2E09_36



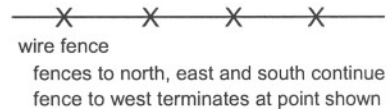
CORNER WITNESS DETAIL

SCALE 1" = 10'



- A - Boone County witness mark, flush, 10.65'
- B - Mag nail set in N.E. side, 9 inch diameter Hackberry tree, 2.3' a.g., 3.7'
- C - Boone County witness mark, flush, 13.81'

Boone County witness mark is a 3/8" diameter x 2' long rebar bearing a metal cap stamped "Boone County Witness Point."



The stone was found in place.

A BCS record of March 22, 1880 states "Reestablished Set Rock 16.13.11 +." No recent tie cards were found for this corner.

The record stone was found at the west edge of the base of a wood corner post, approximately 6 inches below grade. The stone has a distinct "+" etched on the top. The stone measures approximately 13 inches E-W by 11 inches N-S, by at least 13 inches tall. The flat portion of the top of the stone is 2-1/2 inches E-W by 4 inches N-S. The etched "+" is in the middle of the top and was held as the specific point for the corner.

The stone was left in place. A 16 inch tall section of 12 inch diameter HDPE storm pipe was set vertically around the stone. The top of the stone is 6 inches below the top of the section of storm pipe.

This corner was originally established as a wood post in July, 1821.



Kenneth E. Hedge
Kenneth E. Hedge, County Surveyor

James S. Swift
James S. Swift, IN LS 20200054
July 14, 2010

Worth Twp Union Twp

Section 8 T18N, R2E	Section 9 T18N, R2E
------------------------	------------------------

PHOTOGRAPHIC DOCUMENTATION

Date of photography: May 20-21, 2009

The corner post prior to excavation.



View of the stone as first exposed.



View of the stone more fully exposed.



A vertical section of plastic storm pipe set around the stone. The stone was left as found, but surrounded by the section of storm pipe.



The stone partially exposed and washed.



For details and documentation, refer to related sheet "Section Corner Record."

SECTION CORNER RECORD

SE 200-700

BOONE COUNTY SURVEYOR'S OFFICE

State Plane grid coordinates NAD83 (NSRS 2007):

North: 1735870.87 East: 3161948.65 (U.S. survey feet)

Type of monument: Harrison, 4" disk 'Section Corner'

Depth: 1 inch below adjacent road surface

Indiana tie card references:

IN02_T18NR2E07_80

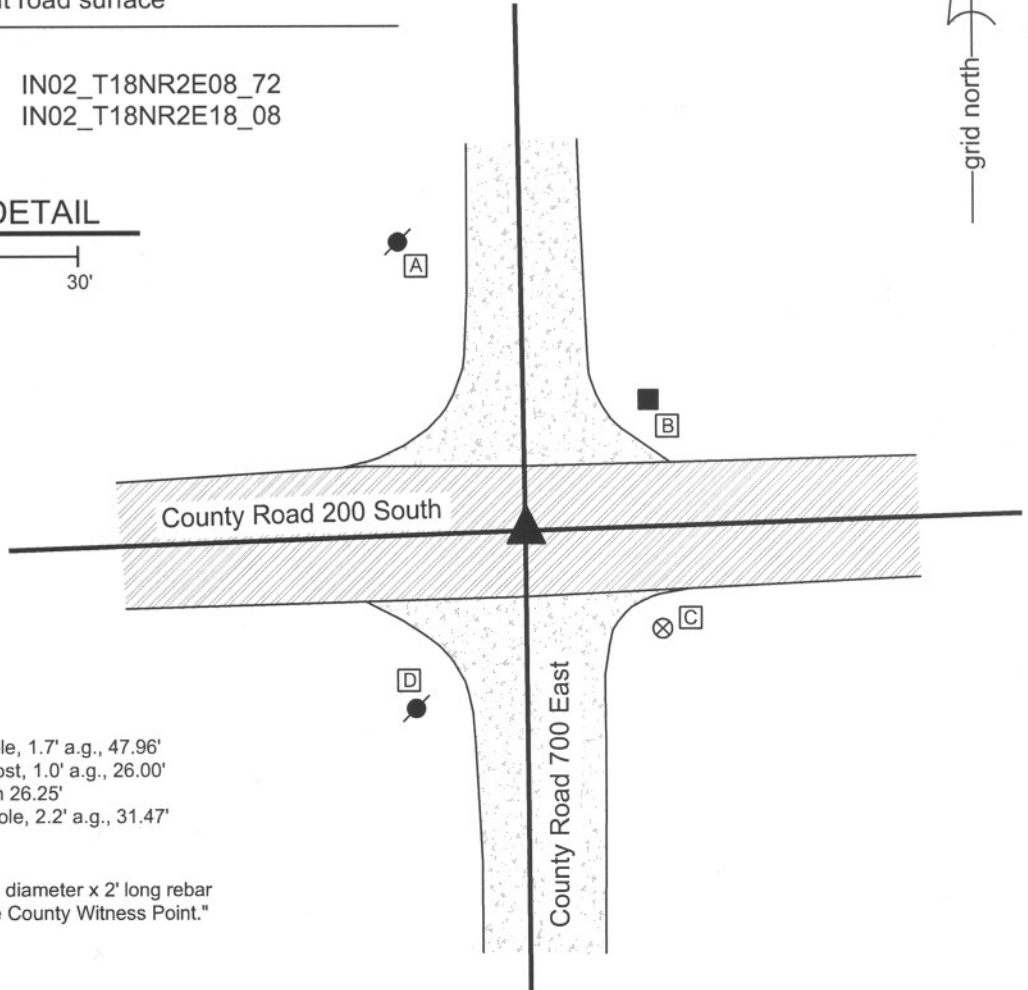
IN02_T18NR2E08_72

IN02_T18NR2E17_00

IN02_T18NR2E18_08

CORNER WITNESS DETAIL

SCALE 1" = 30'



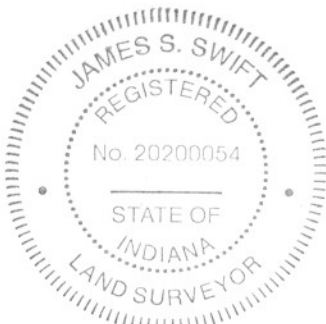
- A - Mag Nail set in S.E. side powerpole, 1.7' a.g., 47.96'
- B - Mag Nail set in S.W. side wood post, 1.0' a.g., 26.00'
- C - Boone County witness mark, flush 26.25'
- D - Mag Nail set in N.E. side power pole, 2.2' a.g., 31.47'

Boone County witness mark is a 3/8" diameter x 2' long rebar bearing a metal cap stamped "Boone County Witness Point."

The harrison monument was set in place of a railroad rail found.

A BCS record of August 17, 1869 states "found from stump of Oak and reestablished drove stake under a rock 16,13.6 +..." A BCS tie card of July 1970 states "no stone, set rail." The railroad rail was found 8 inches below grade in the approximate center of County Road 200 South, slightly west of the apparent physical intersection of said road with County Road 700 East. A four foot N-S by 7 foot E-W area, centered on the rail in the N-S dimension and extended to 5.5 feet east of the rail, was excavated on April 4, 2008. The record stone was not found, nor was any other monument found. Signs of significant disturbance were detected in the gravel layer at the bottom of the road. Excavation was performed to a depth of 2.5 feet and the main layer of clay begins at approximately 2 feet. All sides of the hole were probed every 4 to 6 inches for a minimum of 2 foot penetration into the surrounding area. The railroad rail was replaced with a harrison monument.

This corner was originally established as a wood post in July 1821.



Kenneth E. Hedge
 Kenneth E. Hedge, County Surveyor

James S. Swift
 James S. Swift, IN LS 20200054

March 11, 2009

Worth Township

Section 7 T18N, R2E	Section 8 T18N, R2E
Section 18 T18N, R2E	Section 17 T18N, R2E

SECTION CORNER RECORD

SE 200-750

BOONE COUNTY SURVEYOR'S OFFICE

State Plane grid coordinates NAD83 (NSRS 2007):

North: 1735956.56 East: 3164575.03 (U.S. survey feet)

Type of monument: Harrison, 4" disk 'Section Corner'

Depth: One inch below adjacent road surface.

Indiana tie card references:

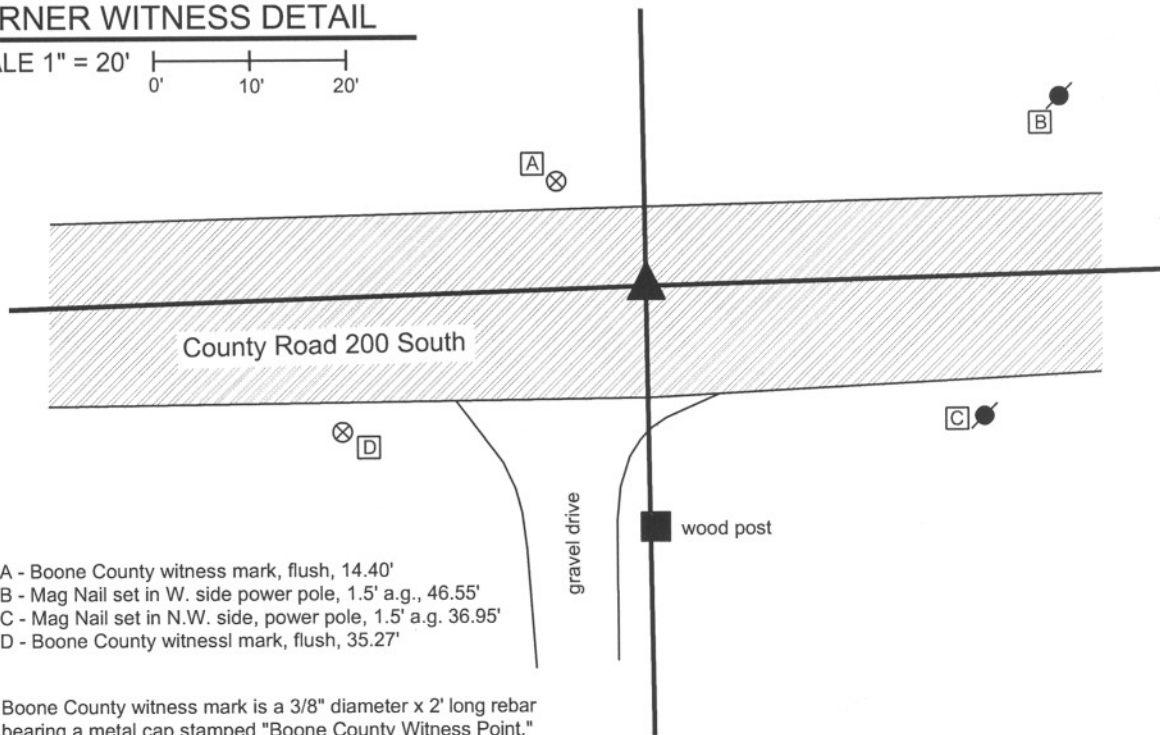
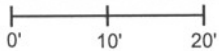
IN02_T18NR2E08_76

IN02_T18NR2E17_04



CORNER WITNESS DETAIL

SCALE 1" = 20'



- A - Boone County witness mark, flush, 14.40'
- B - Mag Nail set in W. side power pole, 1.5' a.g., 46.55'
- C - Mag Nail set in N.W. side, power pole, 1.5' a.g. 36.95'
- D - Boone County witness mark, flush, 35.27'

Boone County witness mark is a 3/8" diameter x 2' long rebar bearing a metal cap stamped "Boone County Witness Point."

The Harrison monument was set directly over the chiseled + on a stone found.

A BCS record of August 17, 1869 states "Reest from stump of trees. Set rock 16.7 by 7 marked +." A 1991 BCS tie card calls for a 5/8 inch rebar found. The source of the rebar is not known. This corner was excavated on April 7, 2008. Prior to excavation, the rebar was visible, 8 inches deep in a hole in the asphalt. Excavation yielded another, disturbed rebar in a vague position. Excavation also yielded the record stone found at 12 inches below grade, protruding approximately 4 inches out of the clay layer into the road base. The stone measures 7 inches by 7 inches at the top with a clearly discernable "+" chiseled in the top. The stone falls on a line which represents a one rod (16.5 feet) offset from fence posts on the north side of the road to both the east and west. The stone is in line with an old fence line to the north and in line with a post and tree line to the south. The rebar, removed during excavation, was 1.6 feet south and 0.8 feet east of the chiseled "+" on the stone.

This corner was originally established as a wood post in July 1821.

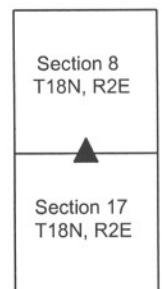


Kenneth E. Hedge
Kenneth E. Hedge, County Surveyor

James S. Swift
James S. Swift, IN LS 20200054

March 11, 2009

Worth Twp



PHOTOGRAPHIC DOCUMENTATION

Date of photography: April 7, 2008

Corner stone - view from East.



Corner stone - close up from East.



Corner stone - view from South.



Corner stone - view from North.



For details and documentation, refer to related sheet "Section Corner Record."

SECTION CORNER RECORD

SE 200-800

BOONE COUNTY SURVEYOR'S OFFICE

State Plane grid coordinates NAD83 (NSRS 2007):

North: 1736025.67 East: 3167202.92 (U.S. survey feet)

Type of monument: Harrison, 4" disk 'Section Corner'

Depth: flush with adjacent road surface

Indiana tie card references:

IN02_T18NR2E08_80

IN02_T18NR2E09_72

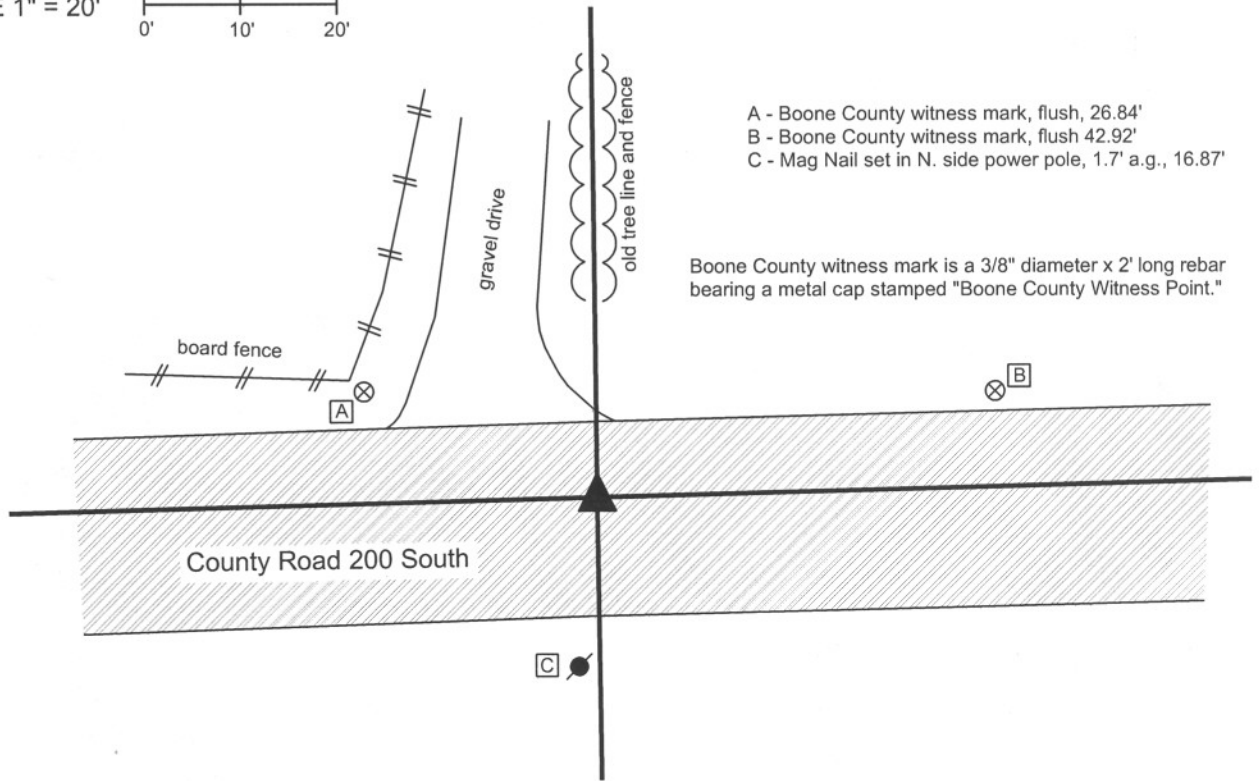
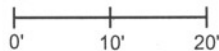
IN02_T18NR2E16_00

IN02_T18NR2E17_08



CORNER WITNESS DETAIL

SCALE 1" = 20'

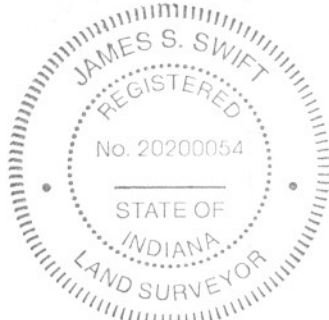


- A - Boone County witness mark, flush, 26.84'
- B - Boone County witness mark, flush 42.92'
- C - Mag Nail set in N. side power pole, 1.7' a.g., 16.87'

Boone County witness mark is a 3/8" diameter x 2' long rebar bearing a metal cap stamped "Boone County Witness Point."

The harrison monument was set in place of a 1/2 inch rebar found.

A BCS tie card dated June 5, 1991 calls for a 1/2 inch rebar found, 0.3 foot below grade, approximately 2 feet north of the center of County Road 200 South and in line with the fences to the north and south. No other BCS records were found for this corner beyond the original establishment of the corner by federal surveyors. This corner was excavated on April 7, 2008. Prior to excavation, the 1/2 inch rebar was visible in hole in the asphalt, 9 inches below grade, in line with the fence line to the north. The fence to the south is no longer present. The rebar was removed and no other monuments were found during excavation. The area of excavation was 4 feet east-west, centered on the rebar and 5 1/2 feet north-south, extended 2 feet north and 3 1/2 feet south of the rebar, excavated to a depth of 18 inches. The clay layer begins at 12 inches. The harrison was set in the position of the rebar, flush with the adjacent road. This corner was originally established as a wood post in July, 1821.



Kenneth E. Hedge
Kenneth E. Hedge, County Surveyor

James S. Swift
James S. Swift, IN LS 20200054

March 11, 2009

Worth Township Union Township

Section 8 T18N, R2E	Section 9 T18N, R2E
Section 17 T18N, R2E	Section 16 T18N, R2E