

SECTION CORNER RECORD

BOONE COUNTY SURVEYOR'S OFFICE

SW 100-400

State Plane grid coordinates NAD83 (2011):
 North: 1740115.72 East: 3103630.46 (U.S. survey feet)

Type of monument: Harrison, 4" disk 'Section Corner'
 Depth: Six inches below adjacent road surface

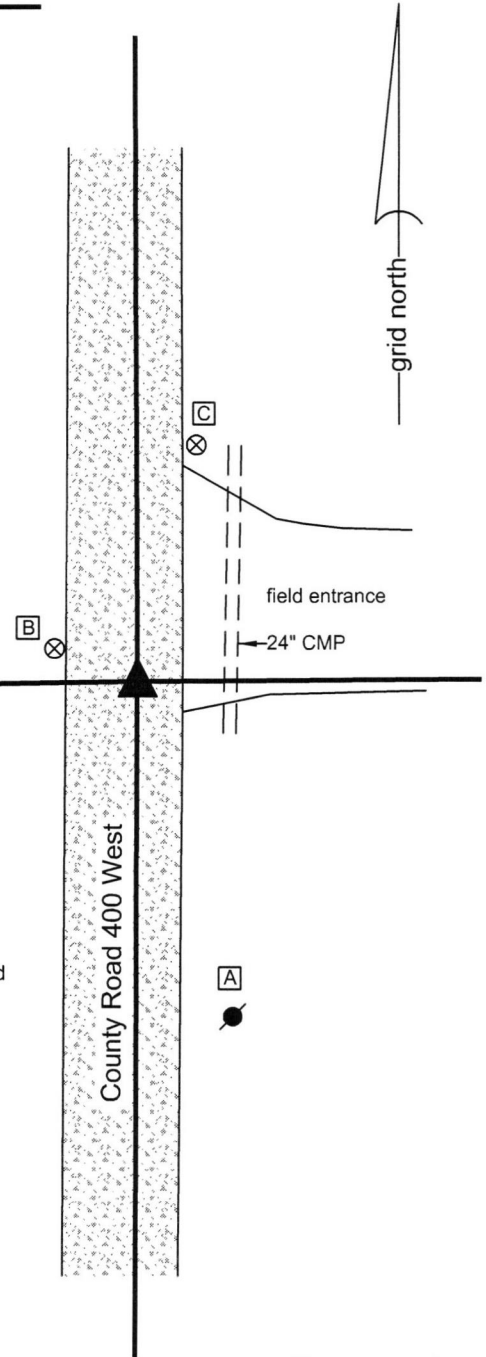
Indiana tie card references:
 IN02_T18NR1W05_80 IN02_T18NR1W04_72
 IN02_T18NR1W08_08 IN02_T18NR1W09_00

CORNER WITNESS DETAIL

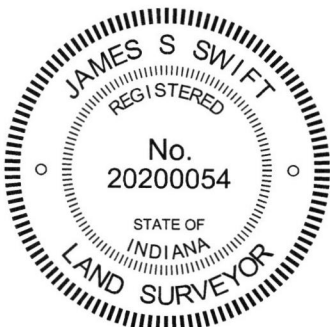
SCALE 1" = 30'

- A - Boone County witness mark, flush, 13.8'
- B - Boone County witness mark, flush, 38.0'
- C - Nail in bottle cap found, SW side power pole, 2' a.g., 53.8'

Boone County witness mark is a 3/8" diameter x 2' long rebar bearing a metal cap stamped "Boone County Witness Point."



The Harrison monument was set in place of a vertical section of railroad rail found. A BCS record dated January 30, 1864 states, with respect to this corner, "Reest from Elm bearing tree Rock + on side and mark on top." A BCS tie card dated June, 1970 states "no stone."
 This corner was excavated on April 12, 2016. Prior to excavation a vertical section of railroad was found at 3 inches deep in the gravel road. Excavation of an area extending 3.5 feet north, 4 feet east, 6 feet south and 6 feet west of the rail revealed no further evidence of the corner. The road bed in this vicinity is only approximately eight inches thick. Excavation was performed to at least twelve inches deep, well into the clay layer below the road bed. Though not specifically stated in the record, it is believed that the railroad rail was most likely set in association with the creation of the 1970 tie card. The rail fit with local evidence in the form of the north-south roadway and a tree line / field division to the east. The position of the rail also fit reasonably well with respect to the relative positions of proximate corners. The position of the rail was held as the corner. The rail was removed during excavation and replaced with a Harrison monument in the same position. This corner was originally established as a wood post in 1820.



Kenneth E. Hedge
 Kenneth E. Hedge, County Surveyor

James S. Swift
 James S. Swift, IN LS 20200054
 March 23, 2017

Jefferson Township	Center Township
Section 5 T18N, R1W	Section 4 T18N, R1W
Section 8 T18N, R1W	Section 9 T18N, R1W

SECTION CORNER RECORD

SW 100-450

BOONE COUNTY SURVEYOR'S OFFICE

State Plane grid coordinates NAD83 (2011):

North: 1740071.35 East: 3100959.49 (U.S. survey feet)

Type of monument: Harrison, 4" disk 'Section Corner'

Depth: Four inches above adjacent ground

Indiana tie card references:

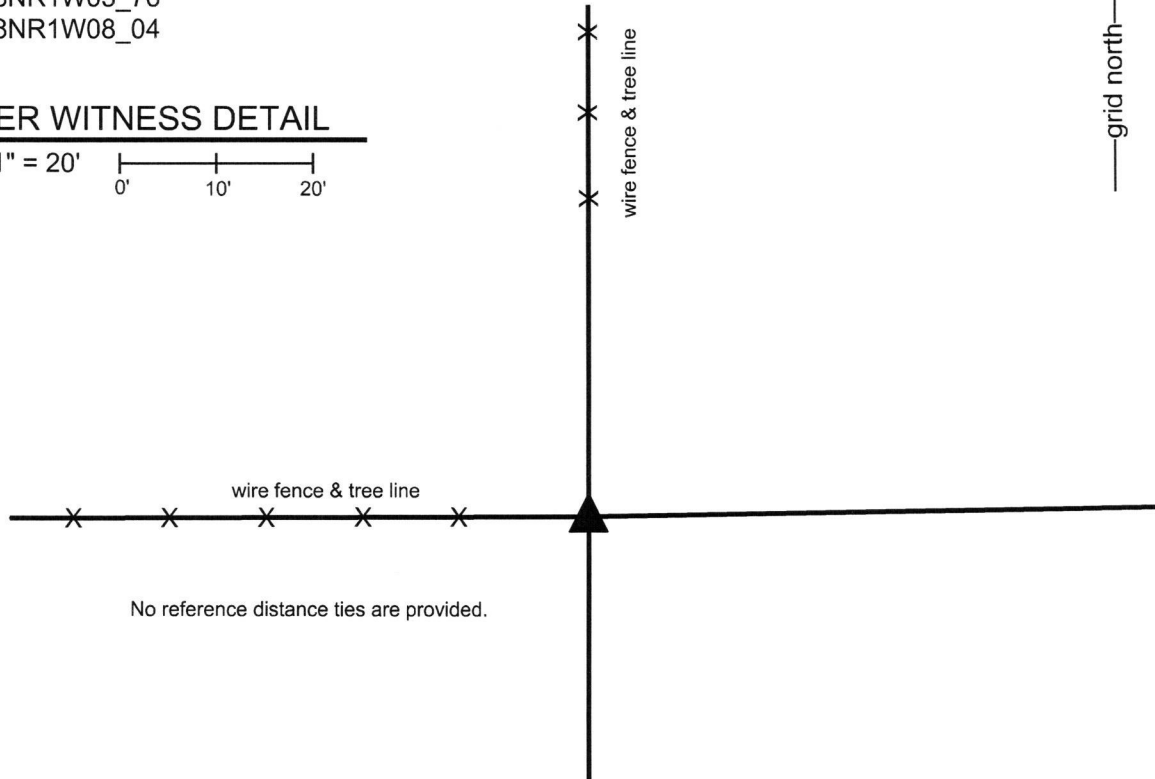
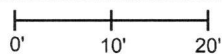
IN02_T18NR1W05_76

IN02_T18NR1W08_04



CORNER WITNESS DETAIL

SCALE 1" = 20'



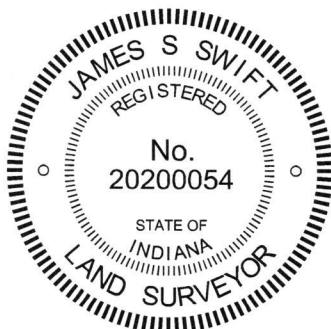
No reference distance ties are provided.

The Harrison monument was set at a calculated position based on proximate fence evidence to the north and west.

A BCS record of December 16, 1870 states, with respect to this corner, "Reest from a stake of my former survey and some remains of Beech roots. Rock 15, 9, 3 1/2 +." No recent BCS tie cards were found referencing this corner.

Excavation and recon were performed at this corner during October, 2016. A probable position for the corner was calculated at the intersection of the prolongation of fences to the north and west. Neither fence reaches the corner, though both terminate in the immediate vicinity of the corner. The fence to the west terminates approximately 11 feet west of the corner and the fence to the north terminates approximately 30 feet to the north of the corner. Numerous rocks of a variety of sizes were found at the calculated position. The rocks were inspected carefully and none were found to match or approximate the dimensions stated in the 1870 record. No artificial survey monuments such as a rebar or section or railroad rail were found in the vicinity of the corner. The calculated position based on the fences to the north and west was held and a Harrison monument was set at this position. The Harrison monument is embedded in concrete within a 10 inch diameter vertical section of storm pipe which is anchored to a large embedded rock immediately to the west.

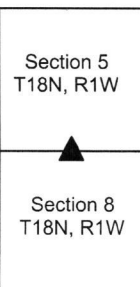
This corner was originally established as a wood post in 1820.



Kenneth E. Hedge, County Surveyor

James S. Swift, IN LS 20200054
March 23, 2017

Jefferson Township



SECTION CORNER RECORD

SW 100-500

BOONE COUNTY SURVEYOR'S OFFICE

State Plane grid coordinates NAD83 (2011):

North: 1740064.84 East: 3098296.54 (U.S. survey feet)

Type of monument: Harrison, 4" disk 'Section Corner'

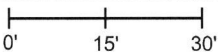
Depth: One inch below adjacent road surface

Indiana tie card references:

IN02_T18NR1W06_80 IN02_T18NR1W05_72

IN02_T18NR1W07_08 IN02_T18NR1W08_00

CORNER WITNESS DETAIL

SCALE 1" = 30' 

A - Mag nail set in S.E. side power pole, 2' a.g., 37.5'

B - Boone County witness mark, flush, 19.1'

C - Boone County witness mark, flush, 23.4'

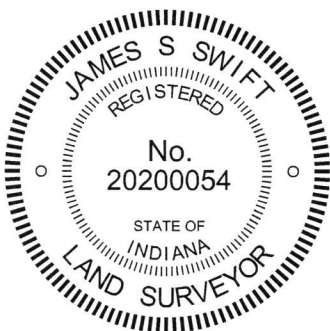
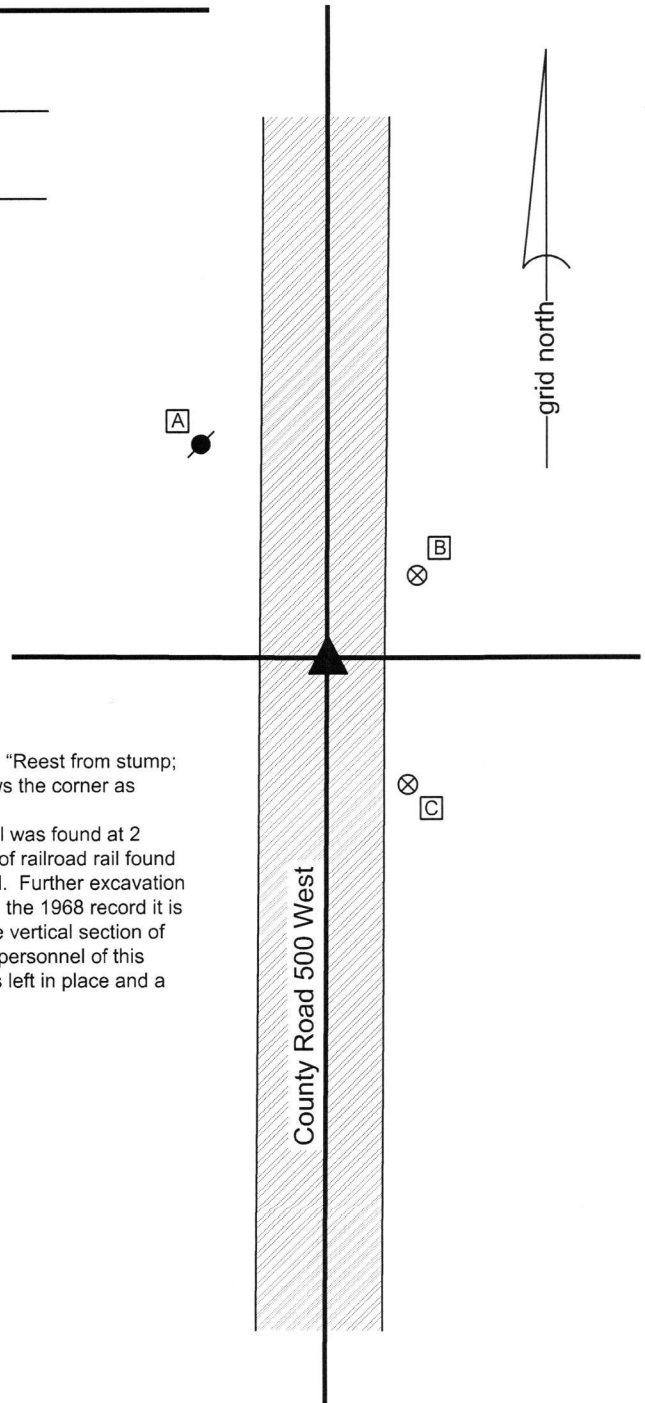
Boone County witness mark is a 3/8" diameter x 2' long rebar bearing a metal cap stamped "Boone County Witness Point."

The Harrison monument was over a vertical section of railroad rail found.

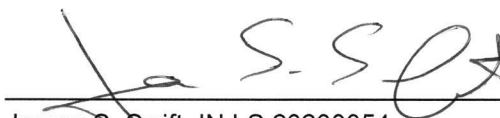
A BCS tie card dated December 16, 1870 states, with respect to this corner, "Reest from stump; of Sugar. Rock 17, 10, 2 1/2 +." A BCS tie card dated August 13, 1968 shows the corner as "Stone Located."

This corner was excavated on July 20, 2016. Prior to excavation, a Mag nail was found at 2 inches deep in a hole in the asphalt. Excavation revealed a vertical section of railroad rail found at 12 inches deep, generally below though slightly southwest of the Mag nail. Further excavation revealed no further evidence of the corner. Though not specifically stated in the 1968 record it is believed most likely that the found stone was removed and replaced with the vertical section of railroad rail at that time. This is known to have been a common practice by personnel of this office during that era. The rail was held as marking the corner. The rail was left in place and a Harrison monument was set over the top of the rail.

This corner was originally established as a wood post in 1820.




 Kenneth E. Hedge, County Surveyor


 James S. Swift, IN LS 20200054
 March 23, 2017

Jefferson Township

Section 6 T18N, R1W	Section 5 T18N, R1W
Section 7 T18N, R1W	Section 8 T18N, R1W

SECTION CORNER RECORD

BOONE COUNTY SURVEYOR'S OFFICE

SW 150-400

State Plane grid coordinates NAD83 (2011):

North: 1737446.24 East: 3103625.11 (U.S. survey feet)

Type of monument: Harrison, 4" disk 'Section Corner'

Depth: Six inches below adjacent gravel road surface

Indiana tie card references:

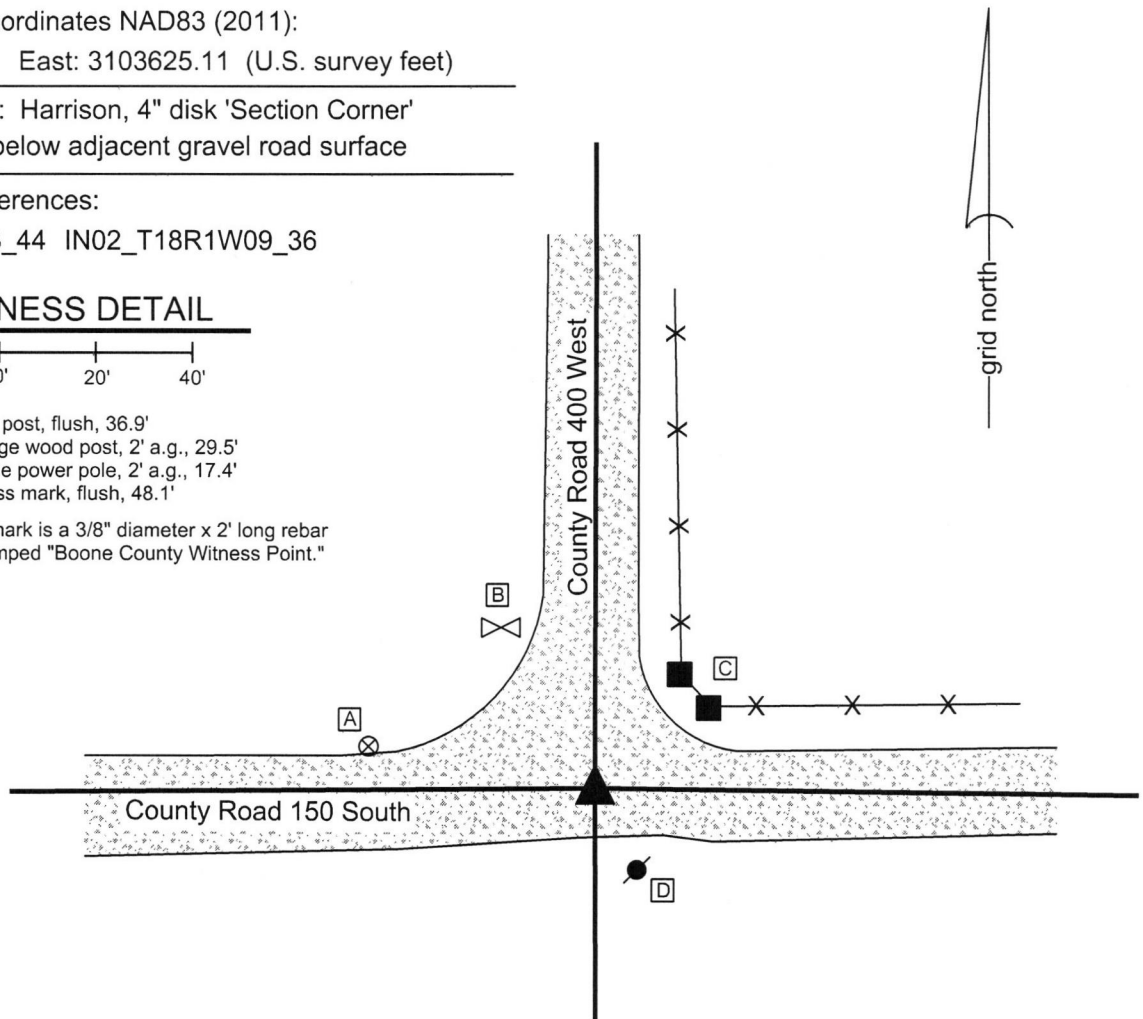
IN02_T18NR1W08_44 IN02_T18R1W09_36

CORNER WITNESS DETAIL

SCALE 1" = 40'

- B - East edge, stop sign post, flush, 36.9'
- C - Mag nail set in S. edge wood post, 2' a.g., 29.5'
- D - Mag nail set in S. side power pole, 2' a.g., 17.4'
- D - Boone County witness mark, flush, 48.1'

Boone County witness mark is a 3/8" diameter x 2' long rebar bearing a metal cap stamped "Boone County Witness Point."

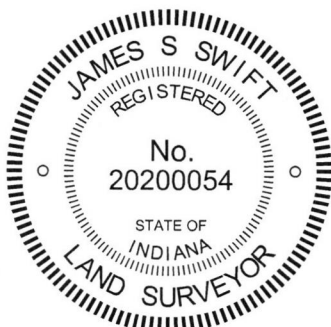


The Harrison monument was set over a stone found.

A BCS record dated January 29, 1864 states, with respect to this corner, "Reest. from Elm bearing tree. Rock + on side and T on top." A BCS tie card dated June, 1970 states "No Stone."

This corner was excavated on April 12, 2016. Prior to excavation, the top of a vertical section of railroad rail was found at 4 inches deep in the approximate center of the intersection of gravel roads. Though not specifically stated on the tie card, it is believed most likely that the section of rail was set in association with the creation of the 1970 tie card. Excavation revealed a stone found at 20 inches deep, northeast of the rail. The stone is sandstone, with the grain of the stone oriented vertically. With the top 12 inches of the stone exposed, it measured 5 inches north-south by 12 inches east-west. An etched "+" mark was clearly visible on the south side, approximately 5 inches down from the top of the stone. No mark was detected on top. The stone was held as marking the corner and a Harrison monument was set directly over the top, high point of the stone. The section of railroad rail, removed during excavation, had been 1.0 foot south and 1.4 feet west of the point held as the corner.

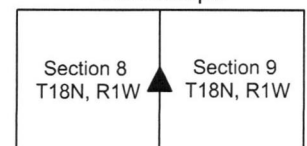
This corner was originally established as a wood post in 1820.



Kenneth E. Hedge
 Kenneth E. Hedge, County Surveyor

James S. Swift
 James S. Swift, IN LS 20200054
 March 23, 2017

Center & Jefferson
 Townships



PHOTOGRAPHIC DOCUMENTATION

Date of photography: April 12, 2016

The stone as it was originally exposed.



The stone more fully exposed.



View from the south, looking across the stone and north along County Road 400 West.



View from the west, looking across the stone and east along County Road 150 South.



For details and documentation, refer to related sheet "Section Corner Record."

SECTION CORNER RECORD

SW 150-500

BOONE COUNTY SURVEYOR'S OFFICE

State Plane grid coordinates NAD83 (2011):

North: 1737427.34 East: 3098282.51 (U.S. survey feet)

Type of monument: Harrison, 4" disk 'Section Corner'

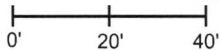
Depth: One inch below adjacent road surface

Indiana tie card references:

IN02_T18NR1W07_44 IN02_T18NR1W08_36

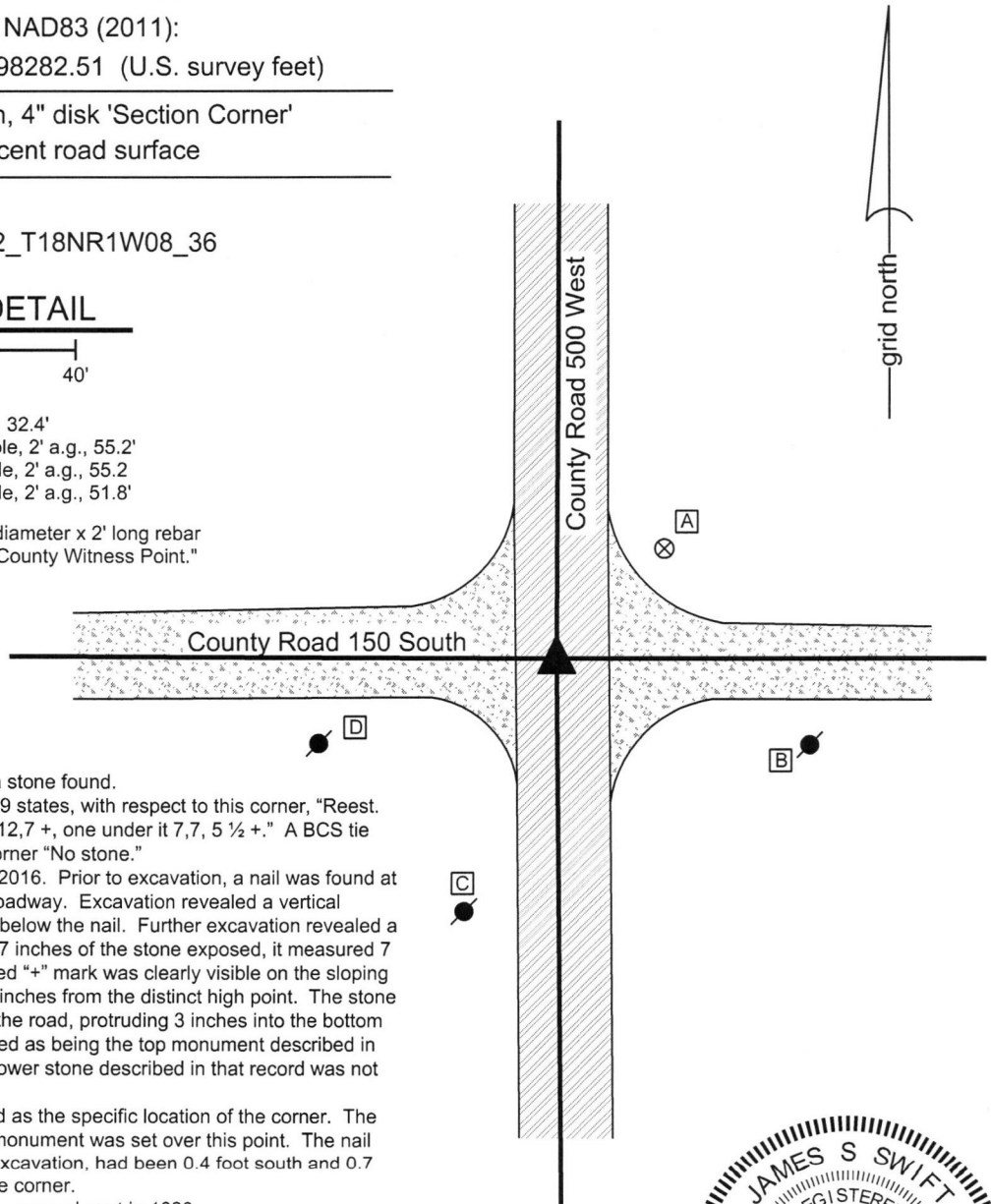
CORNER WITNESS DETAIL

SCALE 1" = 40'

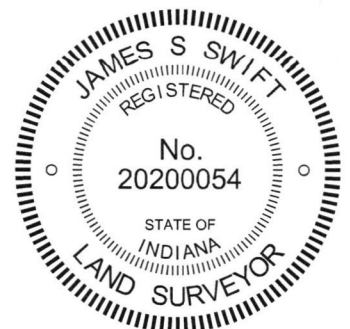


- A - Boone County witness mark, flush, 32.4'
- B - Mag nail set in N.W. side power pole, 2' a.g., 55.2'
- C - Mag nail set in N.E. side power pole, 2' a.g., 55.2'
- D - Mag nail set in N.E. side power pole, 2' a.g., 51.8'

Boone County witness mark is a 3/8" diameter x 2' long rebar bearing a metal cap stamped "Boone County Witness Point."



The Harrison monument was set over a stone found. A BCS record dated December 16, 1879 states, with respect to this corner, "Reest. From Beech, found old stake, Rock 11,12,7 +, one under it 7,7, 5 1/2 +." A BCS tie card dated August 13, 1968 calls the corner "No stone." This corner was excavated on July 12, 2016. Prior to excavation, a nail was found at 2 inches deep in a hole in the asphalt roadway. Excavation revealed a vertical section of railroad rail at 6 inches deep below the nail. Further excavation revealed a stone found at 18 inches. With the top 7 inches of the stone exposed, it measured 7 inches N-S by 11 inches E-W. An etched "+" mark was clearly visible on the sloping east side of the stone, approximately 3 inches from the distinct high point. The stone was embedded in the clay layer below the road, protruding 3 inches into the bottom of the road bed. The stone was accepted as being the top monument described in the 1879 record. The presence of the lower stone described in that record was not confirmed. The top high point of the stone was held as the specific location of the corner. The stone was left in place and a Harrison monument was set over this point. The nail and railroad rail, both removed during excavation, had been 0.4 foot south and 0.7 foot east of the specific point held as the corner. This corner was originally established as a wood post in 1820.

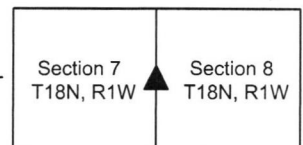


James S. Swift
James S. Swift, IN LS 20200054

Kenneth E. Hedge
Kenneth E. Hedge, County Surveyor

March 23, 2017

Jefferson Township



PHOTOGRAPHIC DOCUMENTATION

Date of photography: July 12, 2016

The stone as it was originally exposed.



View from above and east showing the etched "+" mark on the sloping east side of the stone.



View from the west, looking across the stone and east along County Road 150 South.



View from the south, looking across the stone and north along County Road 500 West.



For details and documentation, refer to related sheet "Section Corner Record."

SECTION CORNER RECORD

SW 200-500

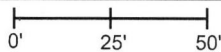
BOONE COUNTY SURVEYOR'S OFFICE

State Plane grid coordinates NAD83 (2011):
North: 1734788.82 East: 3098304.45 (U.S. survey feet)

Type of monument: Harrison, 4" disk 'Section Corner'
Depth: One inch below adjacent road surface

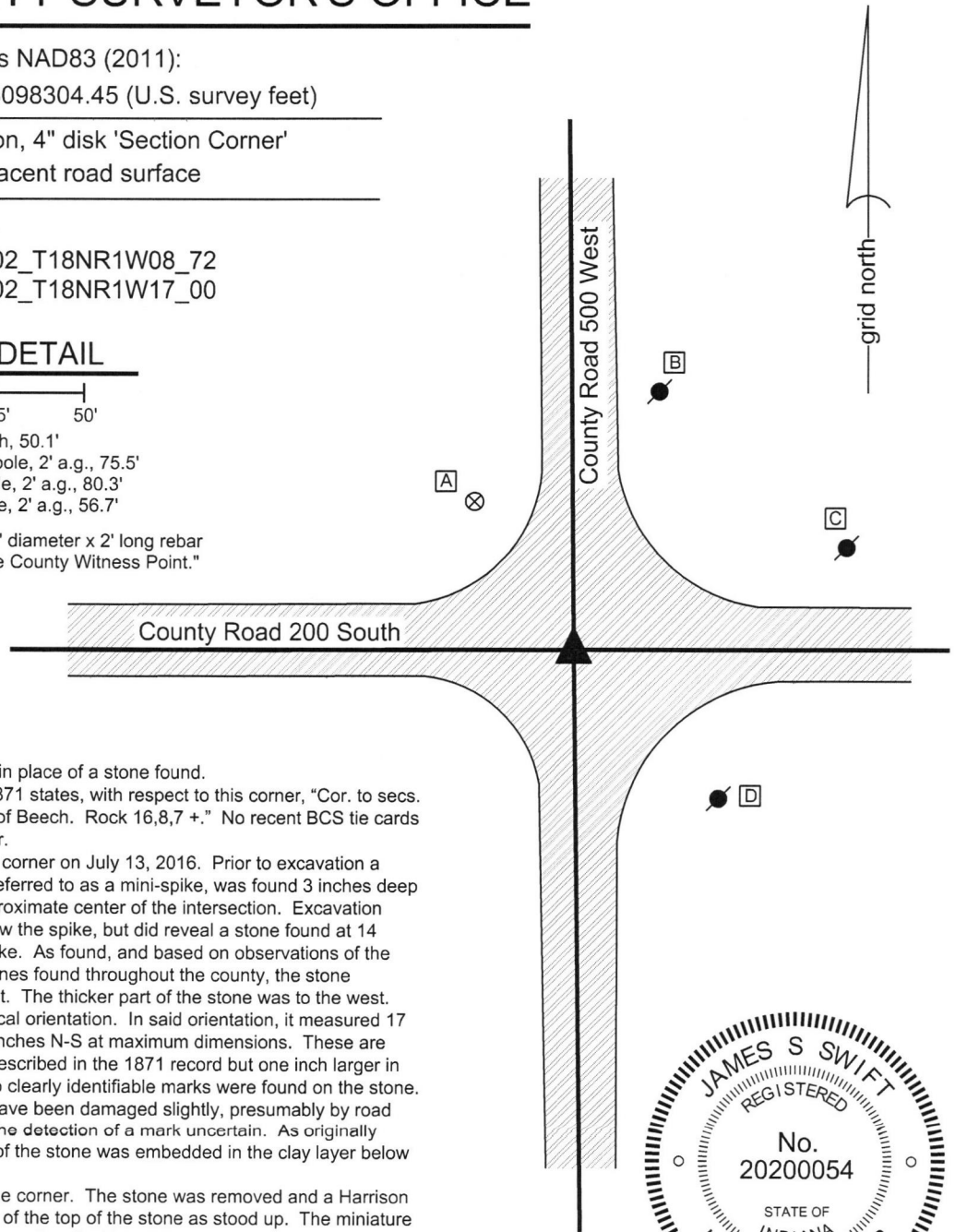
Indiana tie card references:
IN02_T18NR1W07_80 IN02_T18NR1W08_72
IN02_T18NR1W18_08 IN02_T18NR1W17_00

CORNER WITNESS DETAIL

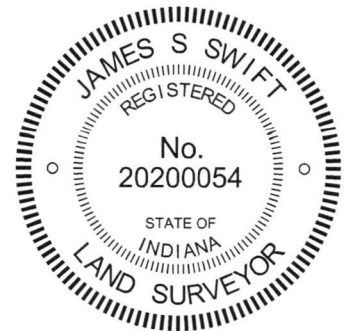
SCALE 1" = 50' 

- A - Boone County witness mark, flush, 50.1'
- B - Mag nail set in S.W. side power pole, 2' a.g., 75.5'
- C - Mag nail set in W. side power pole, 2' a.g., 80.3'
- D - Mag nail set in N. side power pole, 2' a.g., 56.7'

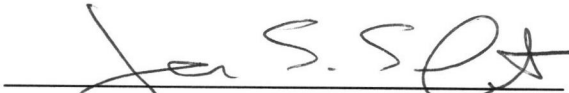
Boone County witness mark is a 3/8" diameter x 2' long rebar bearing a metal cap stamped "Boone County Witness Point."



The Harrison monument was set in place of a stone found.
 A BCS record dated March 27, 1871 states, with respect to this corner, "Cor. to secs. 7,8,17 and 18. Reest from roots of Beech. Rock 16,8,7 +." No recent BCS tie cards were found referencing the corner.
 Excavation was performed at this corner on July 13, 2016. Prior to excavation a small railroad spike, sometimes referred to as a mini-spike, was found 3 inches deep in a hole in the asphalt at the approximate center of the intersection. Excavation revealed no further evidence below the spike, but did reveal a stone found at 14 inches deep, southwest of the spike. As found, and based on observations of the characteristics of other corner stones found throughout the county, the stone appeared to be leaning to the east. The thicker part of the stone was to the west. The stone was stood up in a vertical orientation. In said orientation, it measured 17 inches tall by 9 inches E-W by 8 inches N-S at maximum dimensions. These are similar proportions as the stone described in the 1871 record but one inch larger in the E-W and N-S dimensions. No clearly identifiable marks were found on the stone. The top of the rock appeared to have been damaged slightly, presumably by road grading equipment, which made the detection of a mark uncertain. As originally found, approximately 70 percent of the stone was embedded in the clay layer below the road.
 The stone was held as marking the corner. The stone was removed and a Harrison monument was set in the position of the top of the stone as stood up. The miniature railroad spike, removed during excavation, had been 1.8 feet north and 0.8 foot east of the point held as the corner.
 This corner was originally established as a wood post in 1820.




 Kenneth E. Hedge, County Surveyor


 James S. Swift, IN LS 20200054
 March 23, 2017

Jefferson Township	Section 7 T18N, R1W	Section 8 T18N, R1W
Jackson Township	Section 18 T18N, R1W	Section 17 T18N, R1W

PHOTOGRAPHIC DOCUMENTATION

Date of photography: July 13, 2016

The stone as it was originally exposed.



The stone fully exposed and stood vertical.



View from the south looking across the stone and north along County Road 500 West.



View from the east looking across the stone and west along County Road 200 South.



For details and documentation, refer to related sheet "Section Corner Record."