

SECTION CORNER RECORD

SE 100-100

BOONE COUNTY SURVEYOR'S OFFICE

State Plane grid coordinates NAD83 (2011):

North: 1740513.31 East: 3129871.03 (U.S. survey feet)

Type of monument: Harrison, 4" disk 'Section Corner'

Depth: One inch below adjacent road surface

Indiana tie card references:

IN02_T18NR1E06_80 IN02_T18NR1E05_72

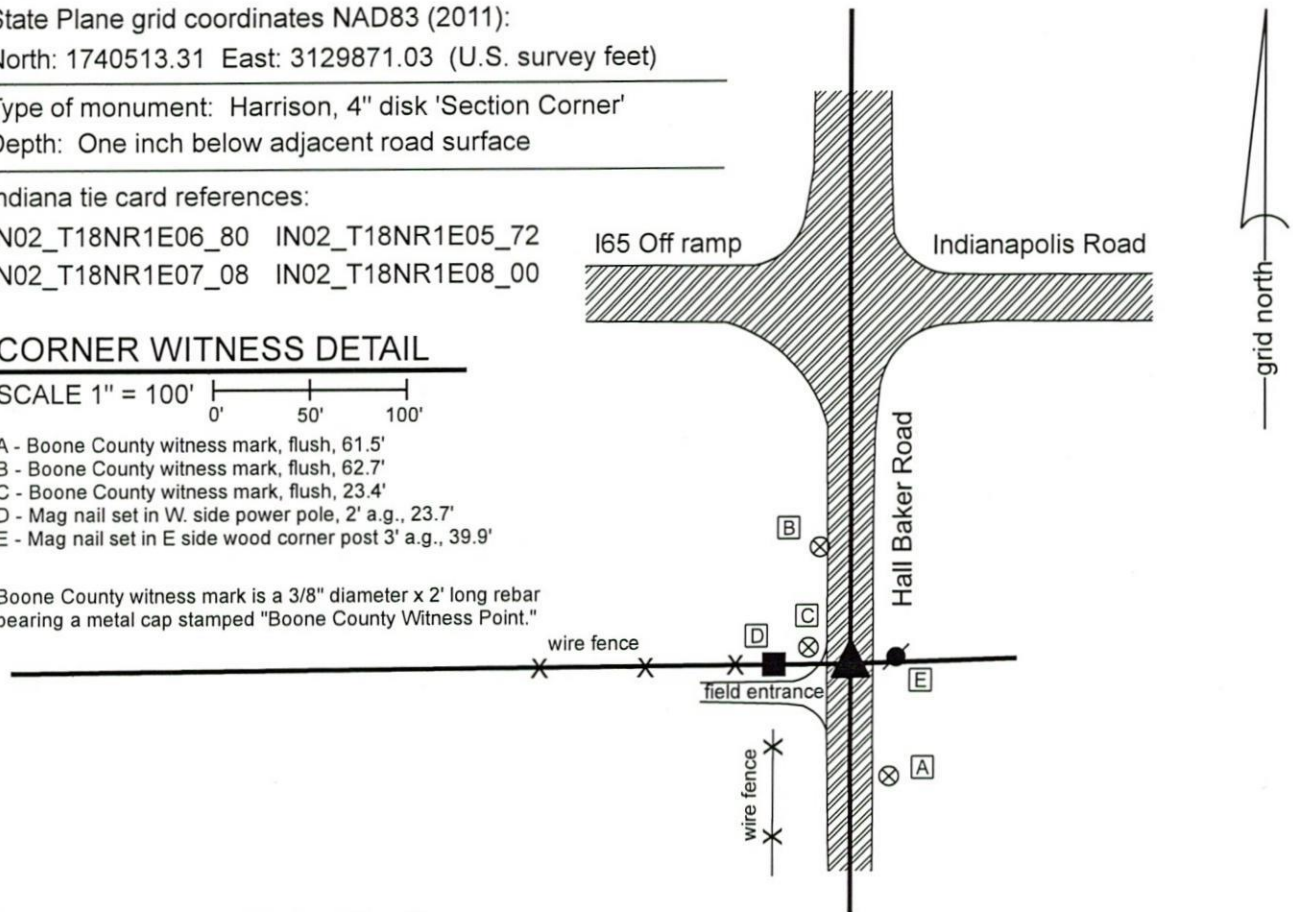
IN02_T18NR1E07_08 IN02_T18NR1E08_00

CORNER WITNESS DETAIL

SCALE 1" = 100'

- A - Boone County witness mark, flush, 61.5'
- B - Boone County witness mark, flush, 62.7'
- C - Boone County witness mark, flush, 23.4'
- D - Mag nail set in W. side power pole, 2' a.g., 23.7'
- E - Mag nail set in E side wood corner post 3' a.g., 39.9'

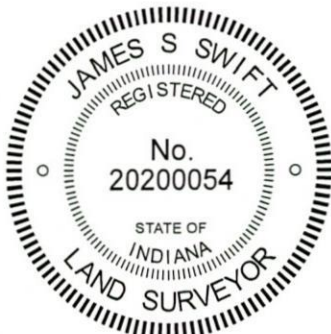
Boone County witness mark is a 3/8" diameter x 2' long rebar bearing a metal cap stamped "Boone County Witness Point."



The Harrison Monument was set at a calculated position.

A BCS record dated October 14, 1868 states, with respect to this corner, "Reestablished from Beech B.T. Set Rock 12.8.10 marked + with Oak stake under it." A BCS record dated June 13, 20 & 21, 1881 references the above entry and shows a distance between the corner and the quarter corner to the south (see BCS Corner SE 150-100). A BCS tie card with no date which appears to date from the late 1960s or early 1970s shows the corner and states "No stone found." A survey recorded in Survey Book 12, pages 30-31 shows the corner as a PK nail found, stating "a pk nail found, location indicated by the Highway Plans for Lebanon US 52 bypass." A survey recorded in Survey Book 12, pages 82-83 shows the corner as an iron rod in the same apparent position as is shown on the survey in SB 12, pages 30-31.

This corner was studied carefully during the summer of 2019 and excavated on September 17, 2019. Prior to excavation, numerous metal readings had been detected and it was apparent that previous surveyors had dug small holes in the road in search of monuments. Manual excavation at the positions of the metal readings demonstrated that the readings were coming from pieces of wire found several inches below the surface of the road. No PK nail, iron pin or other specific survey monuments were found marking the corner prior to excavation. The position of the corner as shown on the survey in SB 30, p.30-31 was computed with respect to monumentation found at or near the south quarter corner, east quarter corner and center quarter corner of section 6. The position was computed with an uncertainty of approximately 0.5 foot. The computed position fell in the center of the north-south roadway at the easterly prolongation of an old fence to the west providing evidence of the south line of the southeast quarter of section 6. A mag spike was set at this position to temporarily mark the corner on July 23, 2019. It is noted that this position for the corner also agrees within one foot of a position computed with respect to deed references to the south line of the southwest quarter of section 5 for descriptions of the Boone County farm properties in the southwest quarter of section 5. On September 15, 2019, excavation of an area extending 3 feet north, 2 feet south and 17 inches east and 17 inches west of the computed position / mag spike revealed no further evidence of the corner. Neither PK nail nor iron rod were found. Excavation did reveal that the aforementioned wire pieces causing metal readings were part of a wire mesh which appears to be incorporated in concrete. The wire and concrete layer was found at 4 inches deep. It is noted that this specific part of the road bed is in approximately three to four feet of fill material. Given the presence of the concrete and the apparent depth of the fill, no further excavation was performed. The computed position of the corner was held and a Harrison monument was set at this position on September 17, 2019. It is observed that this position fits well with local evidence in the form of the old fence to the west and north-south roadway and also fits well with the distances reported in the 1881 BCS entry with respect to the corner to the south.



Kenneth E. Hedge
 Kenneth E. Hedge, County Surveyor

James S. Swift
 James S. Swift, IN LS 20200054
 February 5, 2020

Center Township

Section 6 T18N, R1E	Section 5 T18N, R1E
Section 7 T18N, R1E	Section 8 T18N, R1E

SECTION CORNER RECORD

SE 100-150

BOONE COUNTY SURVEYOR'S OFFICE

State Plane grid coordinates NAD83 (NSRS 2007):
North: 1740591.16 East: 3132533.95 (U.S. survey feet)

Type of monument: Harrison, 4" disk 'Section Corner'
Depth: One inch below adjacent road surface

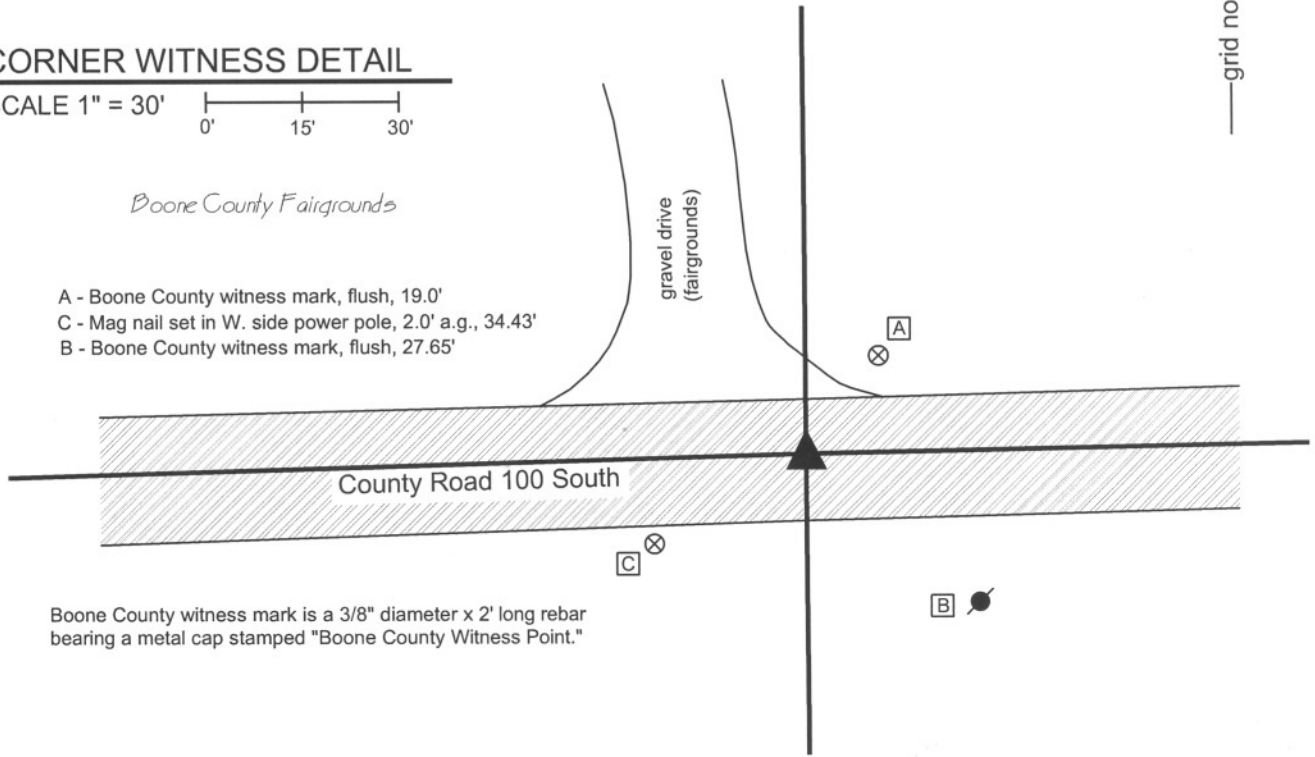
Indiana tie card references:
IN02_T18NR1E05_76
IN02_T18NR1E08_04

CORNER WITNESS DETAIL

SCALE 1" = 30'
0' 15' 30'

Boone County Fairgrounds

- A - Boone County witness mark, flush, 19.0'
- C - Mag nail set in W. side power pole, 2.0' a.g., 34.43'
- B - Boone County witness mark, flush, 27.65'



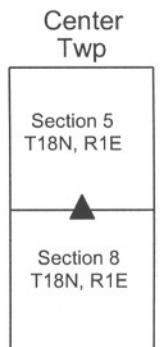
Boone County witness mark is a 3/8" diameter x 2' long rebar bearing a metal cap stamped "Boone County Witness Point."

The harrison monument was set in place of a harrison monument found and a partial steel fence post found. A BCS tie card dated April 29, 1992 shows the corner as a cut-off steel fence post found. This corner is mentioned several times in the BCS Surveyor's Record but no description of a monument was found in the record. This corner was excavated on October 22, 2009. Prior to excavation a harrison monument was visible at the surface of the road. No documentation was found for this monument. The harrison monument was removed and a broken-off steel fence post of the type commonly referred to as a t-post was found at 18 inches deep. The steel post was found to be 3 feet long and was approximately below the harrison monument. The top of the post was at the depth of the bottom of the road and top of the underlying layer of clay. An area extending 4.5 feet West and 2.5 feet North, South and East was excavated to at least 4 inches into the clay layer below the road. No other evidence of the corner was found. A new harrison monument was set at the position of the found steel fence post. This corner was originally established as a wood post in June, 1820.



Kenneth E. Hedge
Kenneth E. Hedge, County Surveyor

James S. Swift
James S. Swift, IN LS 20200054
July 14, 2010



SECTION CORNER RECORD

SE 100-200

BOONE COUNTY SURVEYOR'S OFFICE

State Plane grid coordinates NAD83 (NSRS 2007):

North: 1740642.23 East: 3135205.97 (U.S. survey feet)

Type of monument: Harrison, 4" disk 'Section Corner'

Depth: One inch below adjacent road surface

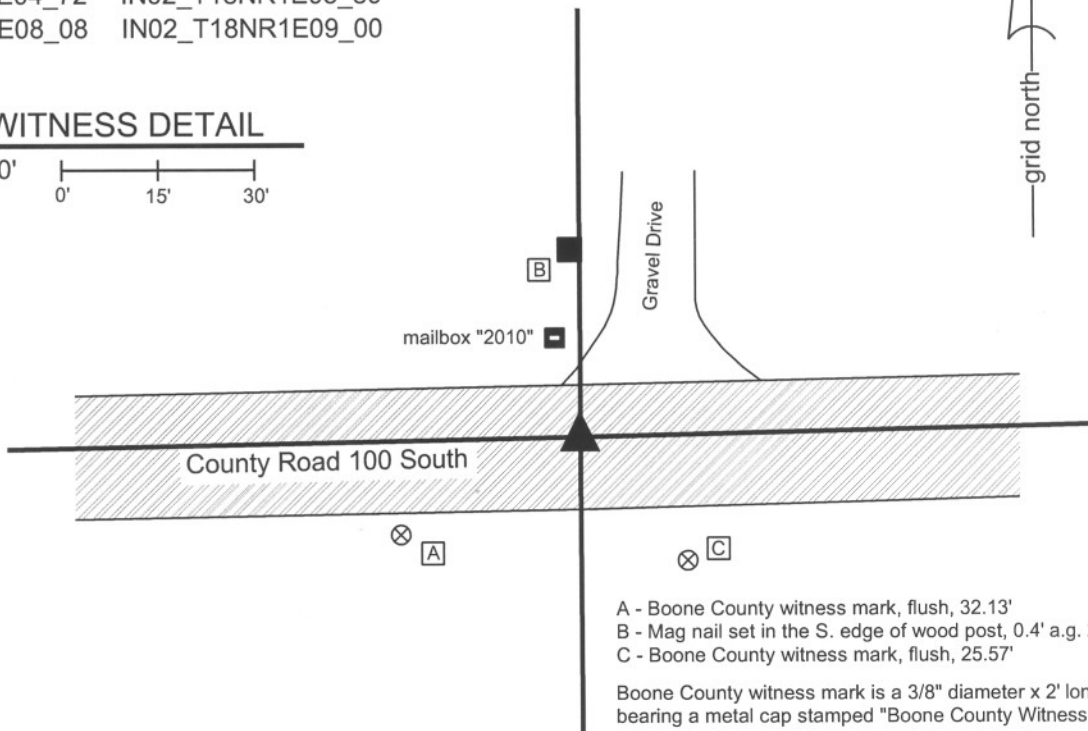
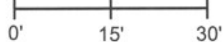
Indiana tie card references:

IN02_T18NR1E04_72 IN02_T18NR1E05_80

IN02_T18NR1E08_08 IN02_T18NR1E09_00

CORNER WITNESS DETAIL

SCALE 1" = 30'



- A - Boone County witness mark, flush, 32.13'
- B - Mag nail set in the S. edge of wood post, 0.4' a.g. 27.38'
- C - Boone County witness mark, flush, 25.57'

Boone County witness mark is a 3/8" diameter x 2' long rebar bearing a metal cap stamped "Boone County Witness Point."

The harrison monument was set over a stone found.

A BCS record of February 9, 1887 states "Re-est. by measure from H-H sec. 9. Set Rock 4,14,19 +" A BCS tie card dated August 16, 1967 shows the corner but makes no mention of a monument. A BCS reference sheet dated July 8, 1989 discusses uncertainties associated with a PK nail found in the vicinity of the corner. A BCS tie card dated June 20, 1991 shows the corner as a railroad rail found. A BCS tie card dated October 21, 2005 shows the corner as a harrison monument with no documentation of source.

This corner was excavated on October 19, 2009. Prior to excavation, a harrison monument was visible at the surface of the road. Excavation revealed a steel railroad rail found on end at 12 inches deep. A rebar was also found on the southwest side of the railroad rail. The harrison monument had been over the rebar. Both the rebar and the rail were removed. A stone was found at 18 inches deep, 1.6 feet North and 2.6 feet East of the position of the harrison monument. The stone is completely embedded in the clay layer below the road bed, with the top of the stone at the top of the clay layer. The stone is 14 inches tall and is not oriented with the cardinal directions. The top of the stone measures 12 inches in the NE-SW dimension and a spur at the bottom of the stone on the southwest side protrudes 2 inches for a total 14 inches. The top of the stone measures 6 inches wide in the NW-SE dimension and a spur on the southeast side protrudes for 3 inches for a total of 9 inches. No visible marks were found. The written record states that the stone is 4,14,9. The stone found measures 14,14,9. The found stone also fits well with the local evidence in the E-W dimension in the form of an old post on the north side of the road. The harrison, railroad rail and rebar were all west of this post. The stone was accepted as the corner and a harrison monument was set over the top center of the main ridge of the stone.

This corner was originally established as a wood post in June, 1820.



Kenneth E. Hedge
 Kenneth E. Hedge, County Surveyor

James S. Swift
 James S. Swift, IN LS 20200054
 July 14, 2010

Center Township

Section 5 T18N, R1E	Section 4 T18N, R1E
Section 8 T18N, R1E	Section 9 T18N, R1E

PHOTOGRAPHIC DOCUMENTATION

Date of photography: October 19, 2009

View of the stone as first exposed.



View of the stone more fully exposed.
View from the west.



View from the south, looking across the stone (hidden behind the corner of pavement), and north to the old post on the north side of the road.



Similar view to above. View from the southwest.



Close-up of the stone as found and exposed.



For details and documentation, refer to related sheet "Section Corner Record."

SECTION CORNER RECORD

SE 150-100

BOONE COUNTY SURVEYOR'S OFFICE

State Plane grid coordinates NAD83 (NSRS 2007):

North: 1737853.10 East: 3129879.78 (U.S. survey feet)

Type of monument: Harrison, 4" disk 'Section Corner'

Depth: One inch below adjacent road surface

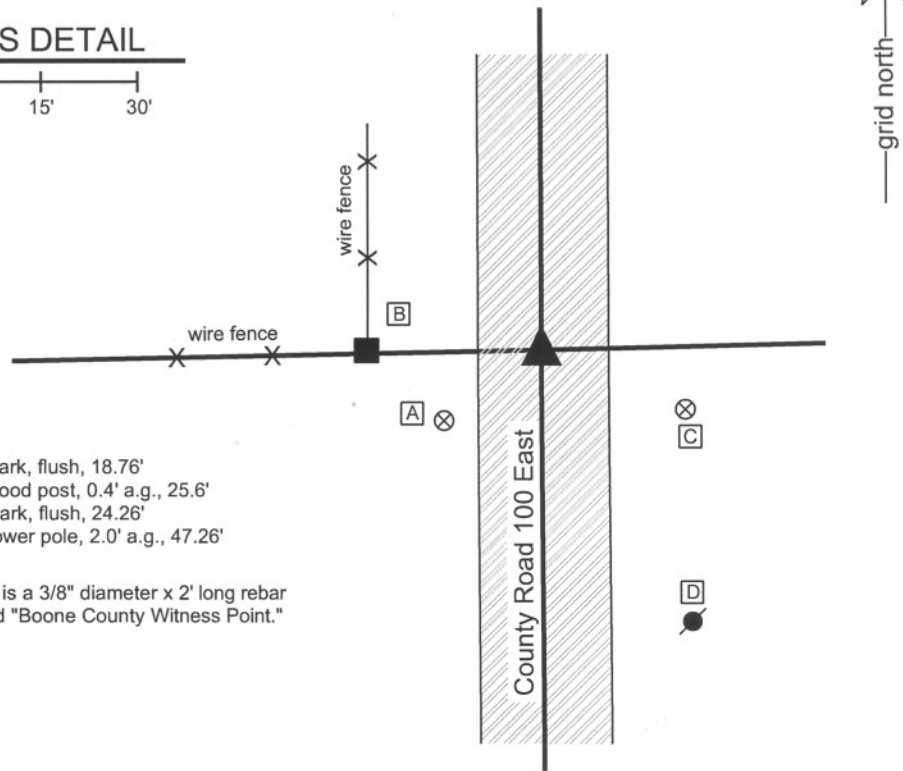
Indiana tie card references:

IN02_T18NR1E07_44

IN02_T18NR1E08_36

CORNER WITNESS DETAIL

SCALE 1" = 30'



- A - Boone County witness mark, flush, 18.76'
- B - Mag nail set in E. side, wood post, 0.4' a.g., 25.6'
- C - Boone County witness mark, flush, 24.26'
- D - Mag nail set in N. side power pole, 2.0' a.g., 47.26'

Boone County witness mark is a 3/8" diameter x 2' long rebar bearing a metal cap stamped "Boone County Witness Point."

The harrison monument was set over a stone found.

A BCS record of June 13, 20, 21, 1881 states "Set Rock 12,10,10 marked +." A BCS tie card dated April 29, 1992 shows the corner as a railroad spike found. This corner was excavated on July 21, 2009. Prior to excavation a railroad spike was found 6 inches below grade, matching references on the 1992 tie card. Excavation revealed a stone found at 15 inches deep. This stone was of a soft material and was found to be entirely within the gravel portion of the road bed and generally unstable. The stone was removed. The record stone was found directly below at 18 inches deep. With 8 inches of the stone exposed, it measured 10 inches N-S by 10 inches E-W. The stone is fully embedded in the clay layer below the road bed and a vague etched "+" is visible on the top towards the south edge of the stone. The harrison monument was set directly over the etched "+". The railroad spike, removed during excavation, was 0.4 foot north and 0.4 foot west of this point.

This corner was originally established as a wood post in June, 1820.



Kenneth E. Hedge
 Kenneth E. Hedge, County Surveyor

James S. Swift
 James S. Swift, IN LS 20200054
 July 14, 2010

Center Township

Section 7 T18N, R1E	Section 8 T18N, R1E
------------------------	------------------------

PHOTOGRAPHIC DOCUMENTATION

Date of photography: July 21, 2009

The top stone, found in the fill material.



The lower stone, described in the 1881 record.
View from above and west.



The lower stone. View from the above and north.



The lower stone, washed. The etched mark is visible as a dark area on the top of the rock.



For details and documentation, refer to related sheet "Section Corner Record."

SECTION CORNER RECORD

SE 200-100

BOONE COUNTY SURVEYOR'S OFFICE

State Plane grid coordinates NAD83 (NSRS 2007):

North: 1735188.75 East: 3129897.92 (U.S. survey feet)

Type of monument: Harrison, 4" disk 'Section Corner'

Depth: One inch below adjacent road surface

Indiana tie card references:

IN02_T18NR1E07_80 IN02_T18NR1E08_72

IN02_T18NR1E17_00 IN02_T18NR1E18_08

CORNER WITNESS DETAIL

SCALE 1" = 40'

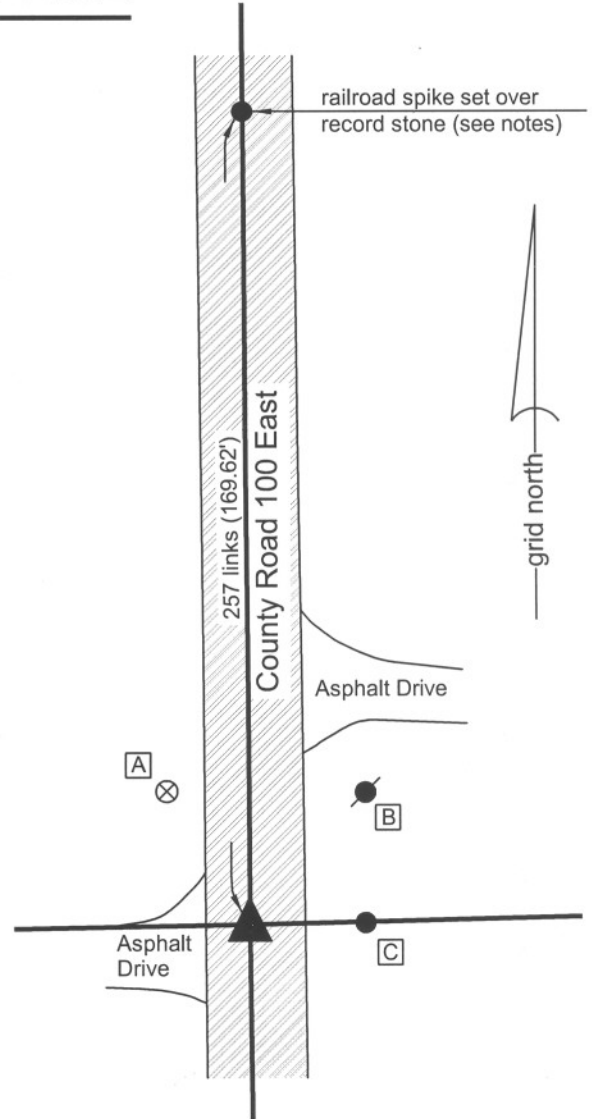


A - Boone County witness mark, flush, 32.64'

B - Mag nail set in S. side power pole, 2.0' a.g., 35.0'

C - 5/8" capped rebar found (Carter), flush, 23.96'

Boone County witness mark is a 3/8" diameter x 2' long rebar bearing a metal cap stamped "Boone County Witness Point."



The harrison monument was set in a position calculated upon the relative positions of two stones to the north.

This corner is not specifically described in the BCS "Surveyor's Record." However, sufficient information exists in the record to reconstruct the position of the corner relative to two stones found. A BCS record of February 12 mentions an intermediate corner (corner 4 of section 8) north of the subject corner. This corner is also referenced as a terminal point for measurements in a BCS record of March 13, 1871. A BCS record of June 13, 20, 21, 1881 describes the stone set at the quarter corner one-half mile to the north (corner H of section 8.) and records measurements from said corner (H) to the aforementioned intermediate corner (4) and to the subject corner (corner G of section 8.) It also records a measurement from the intermediate corner (4) to the subject corner (G). The record stone at corner H was found and a stone was found at corner 4. No stone was found at the subject corner (G). The distance between corners H and 4 match the distance recorded in 1881 of 37.80 chains to within one tenth of a foot. The position of the subject corner was established at the prolongation of the line between the stones at corners H and 4 at the record distance of 2.57 chains (169.62 feet) from corner 4. Excavation at this position revealed no further evidence. The harrison monument was set at the calculated position for the corner. This corner was originally established as a wood post in July, 1821.



Kenneth E. Hedge
 Kenneth E. Hedge, County Surveyor

James S. Swift
 James S. Swift, IN LS 20200054
 July 14, 2010

Center Township

Section 7 T18N, R1E	Section 8 T18N, R1E
Section 18 T18N, R1E	Section 17 T18N, R1E

SECTION CORNER RECORD

BOONE COUNTY SURVEYOR'S OFFICE

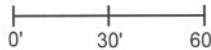
SE 200-150

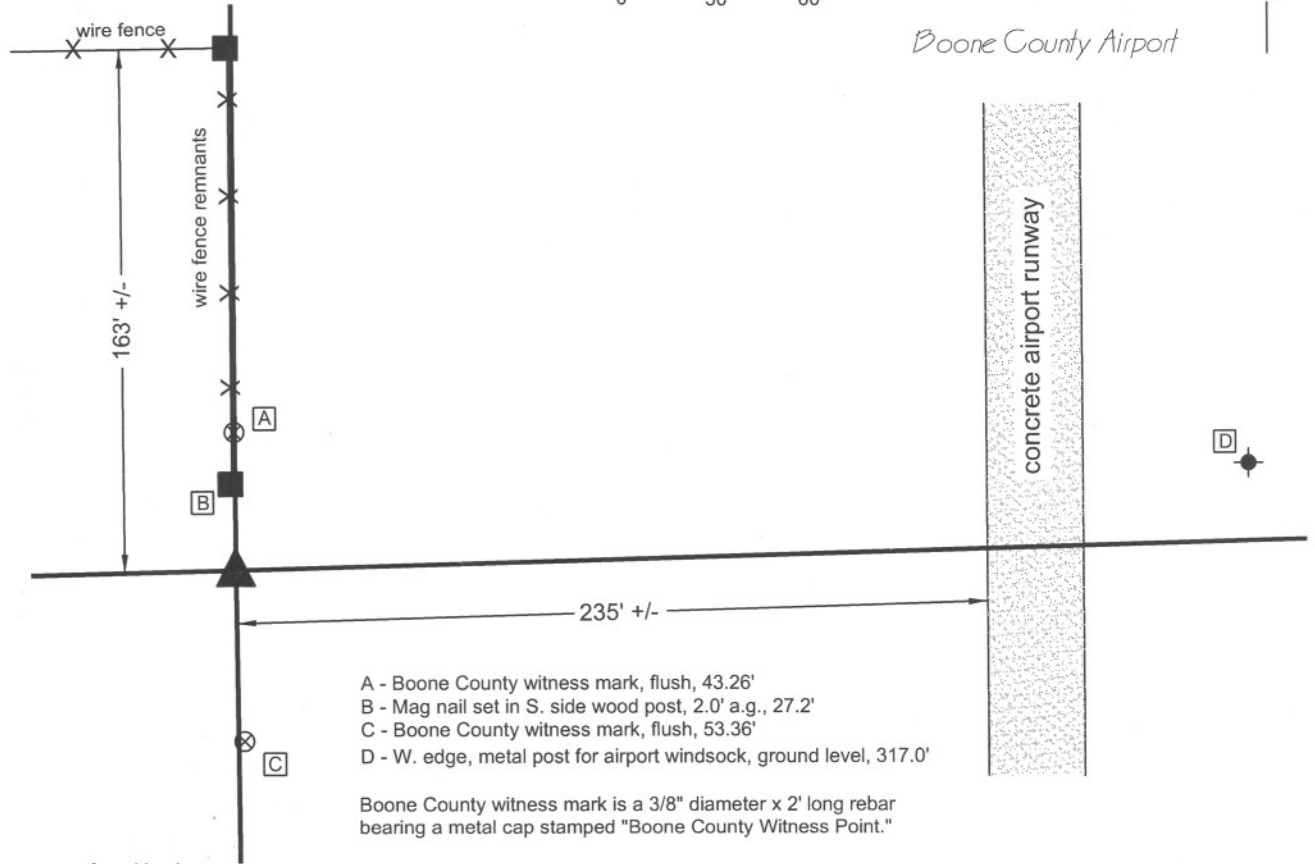
State Plane grid coordinates NAD83 (NSRS 2007):
 North: 1735252.07 East: 3132567.46 (U.S. survey feet)

Type of monument: Stone visible within 12" vertical storm pipe
 Depth: approximately one inch below adjacent ground

Indiana tie card references:
 IN02_T18NR1E08_76
 IN02_T18NR1E17_04

CORNER WITNESS DETAIL

SCALE 1" = 60' 

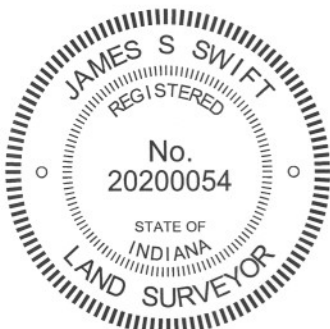


- A - Boone County witness mark, flush, 43.26'
- B - Mag nail set in S. side wood post, 2.0' a.g., 27.2'
- C - Boone County witness mark, flush, 53.36'
- D - W. edge, metal post for airport windsock, ground level, 317.0'

Boone County witness mark is a 3/8" diameter x 2' long rebar bearing a metal cap stamped "Boone County Witness Point."

The stone was found in place.

A BCS record of December 5-6, 1865 states "Reestablished from trees. Set Rock 22,17,5- 1/2 + on side." No recent BCS tie cards were found referencing this corner. This corner was excavated on July 20, 2009. Prior to excavation a 5/8 inch rebar bearing a plastic cap stamped "Henry Aldridge" was found flush with the ground. Excavation revealed the record stone at approximately 2 inches below grade, 2.6 feet south of the rebar. With 12 inches exposed, the stone measures 16 inches N-S by 5 inches E-W. The etched "+" is clearly visible of the East side, towards the north edge of the stone, directly below the high point of the top of the stone. An 18 inch long section of 12 inch diameter HDPE smooth core storm pipe was set around the stone. The high point, above the etched "+" was held as the specific position for the corner. The rebar was left in place. This corner was originally established as a wood post in June, 1820.



Kenneth E. Hedge
 Kenneth E. Hedge, County Surveyor

James S. Swift
 James S. Swift, IN LS 20200054
 July 14, 2010, Revised April 30, 2012

Center Township

Section 8
T18N, R1E

▲

Section 17
T18N, R1E

PHOTOGRAPHIC DOCUMENTATION

Date of photography: July 20, 2009

The stone as found under the wire of the remnant north-south fence.



The top of the stone exposed, showing the etched mark on the east side.



The stone with the vertical section of plastic storm pipe set around it.



View from the north, showing the stone, rebar and a remaining post of the north-south fence.



For details and documentation, refer to related sheet "Section Corner Record."