

SECTION CORNER RECORD

SW 700-500

BOONE COUNTY SURVEYOR'S OFFICE

State Plane grid coordinates NAD83 (2011):

North: 1708238.49 East: 3098716.24 (U.S. survey feet)

Type of monument: Harrison, 4" disk 'Section Corner'

Depth: One inch below adjacent road surface

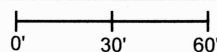
Indiana tie card references:

IN02_T17NR1W06_80 IN02_T17NR1W05_72

IN02_T17NR1W07_08 IN02_T17NR1W08_00

CORNER WITNESS DETAIL

SCALE 1" = 60'



- A - Boone County witness mark, flush, 49.5'
- B - Boone County witness mark, flush, 18.1'
- C - Mag nail set in N. side power pole, 2' a.g., 94.4'
- D - Mag nail set in S.E. side power pole, 2' a.g., 137.2'
- E - Railroad spike found, flush, 9.9'

The Harrison Monument was set in place of a Mag Nail found. A BCS record dated December 10, 1862 describes this corner as established along a line between the northwest corner of Section 5 and the west quarter corner of Section 8.

No recent BCS tie cards were found referencing this corner. Two monuments exist in the immediate vicinity of this corner, including a railroad spike and a Mag Nail separated by 9.9 feet north-south. The origin of these monuments is not known. The deeds for the adjoining and proximate properties to the east are referenced to the west quarter corner of Section 8 and do not call for this corner (see Instruments 19999009788, 2010006350, 2022003858, 202202685, Boone County Recorder). Notably, even properties located entirely within Section 5 call for the west quarter corner of Section 8 as a reference point.

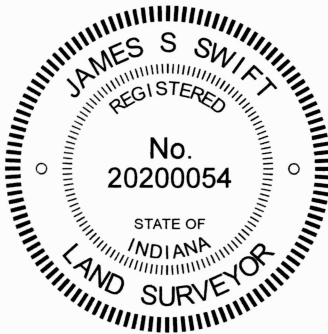
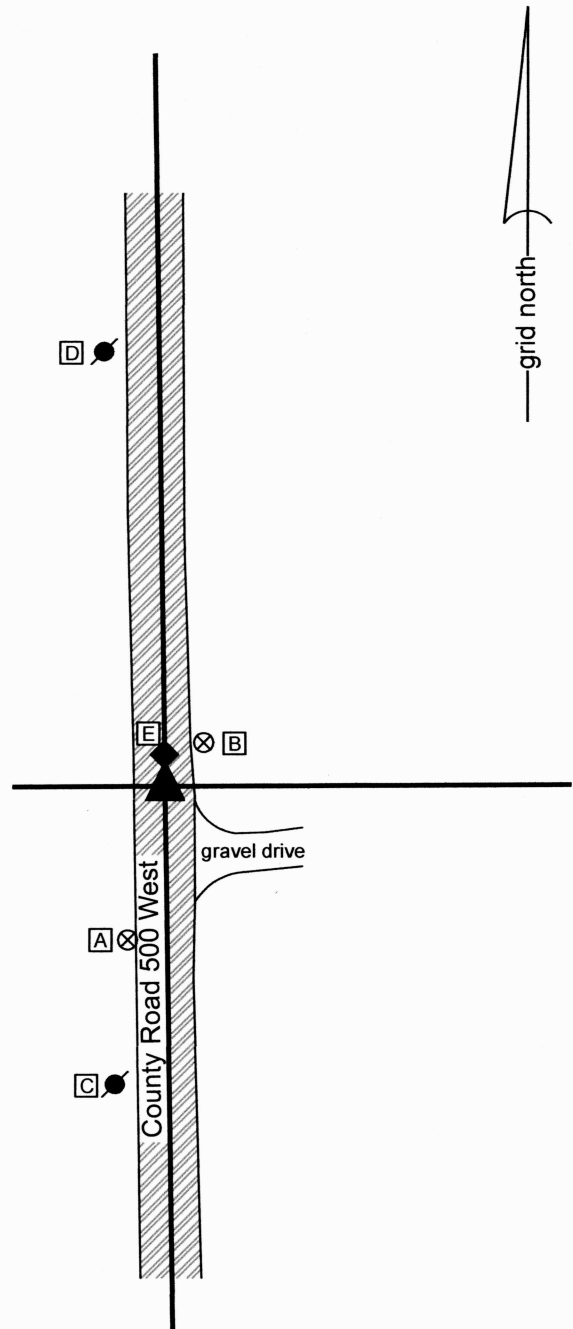
The adjacent property to the west (see Instrument 2020003170) does call for this corner. No base survey for this description is recorded in the Office of the Boone County Recorder, but, per the relative geometry of the description as retraced with respect to other calls in the description, it is clear that the Mag Nail is at the position of the corner as held for that description.

A recent survey by this surveyor, Swift, (see Instrument 2023005575), which subdivides the property described in Instrument 2020003170, references the east quarter corner of Section 7 as the primary tie point for the description, but holds the Mag Nail which is clearly at the position of the corner, per the parent description to that survey.

No large-scale exploratory excavation was performed at this corner due to the fact that the corner falls in an area of substantial road fill. The position of the Mag Nail fits better with the available evidence than does the railroad spike. The nail fits better with evidence to the east and west, fits better with the relative positions of the corners to the north and south and was held as the position of the corner for the description of the adjacent property to the west. No references to the railroad spike or position thereof were found in the available public records.

The Mag Nail was replaced with a Harrison monument, at the same position, on June 26, 2023.

This corner was originally established as a wood post in 1820.



Carol Cunningham
 Carol Cunningham, County Surveyor

James S. Swift
 James S. Swift, IN LS 20200054
 June 30, 2023

Jackson Township

Section 6 T17N, R1W	Section 5 T17N, R1W
Section 7 T17N, R1W	Section 8 T17N, R1W

SECTION CORNER RECORD

SW 750-400

BOONE COUNTY SURVEYOR'S OFFICE

State Plane grid coordinates NAD83 (2011):

North: 1705609.34 East: 3104065.17 (U.S. survey feet)

Type of monument: Harrison, 4" disk 'Section Corner'

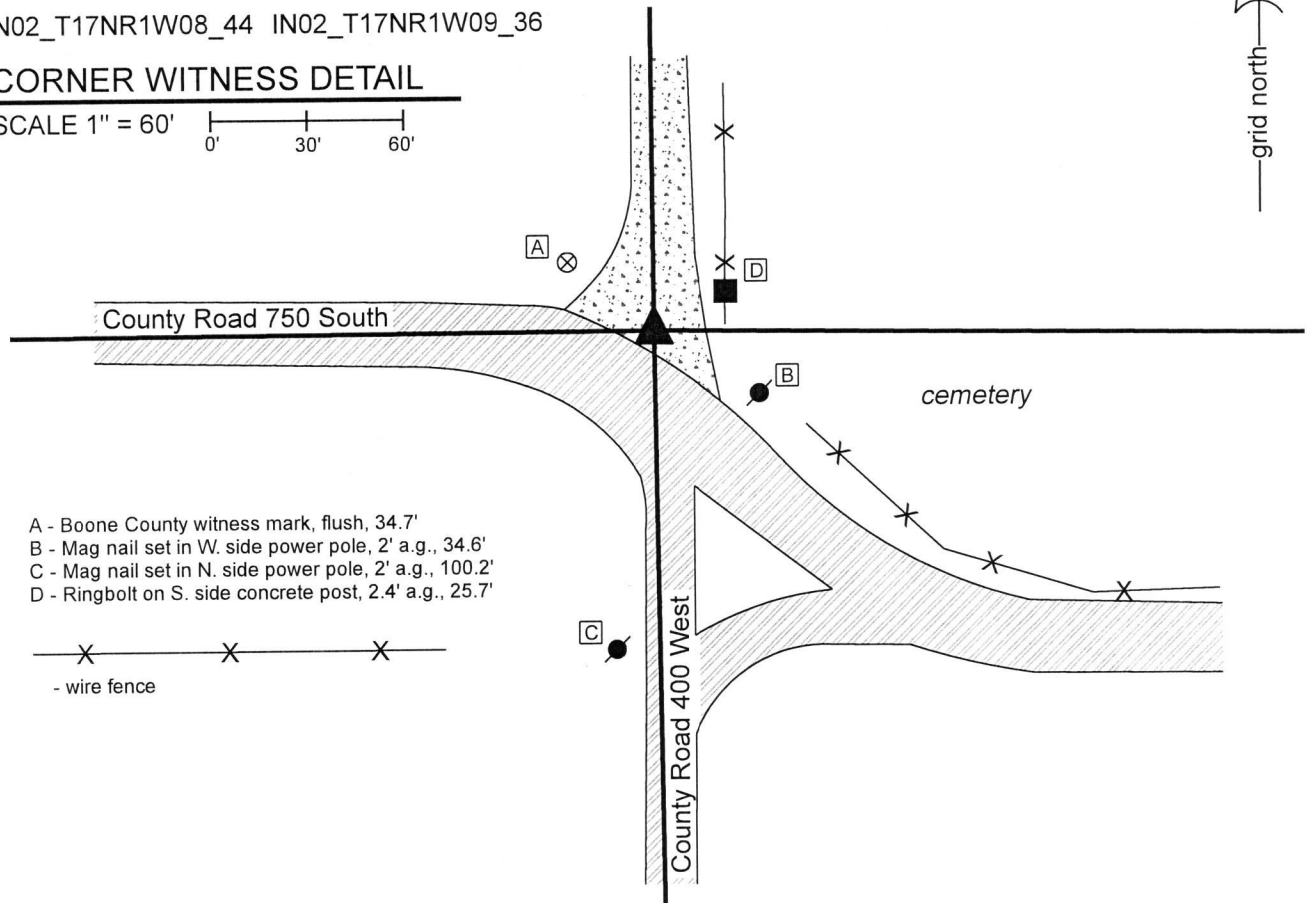
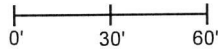
Depth: Four inches below adjacent road surface

Indiana tie card references:

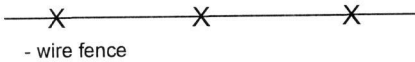
IN02_T17NR1W08_44 IN02_T17NR1W09_36

CORNER WITNESS DETAIL

SCALE 1" = 60'



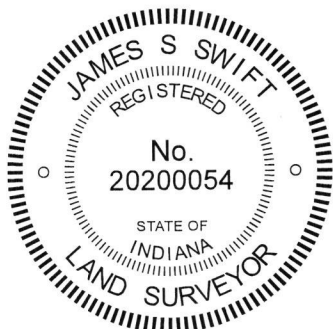
- A - Boone County witness mark, flush, 34.7'
- B - Mag nail set in W. side power pole, 2' a.g., 34.6'
- C - Mag nail set in N. side power pole, 2' a.g., 100.2'
- D - Ringbolt on S. side concrete post, 2.4' a.g., 25.7'



The Harrison monument was set in place of a stone found.

A BCS record of February 18-23, 1858 states, with respect to this corner, "Rock, 19, 20." No recent BCS tie cards were found referencing this corner. Excavation was performed at this corner on October 22, 2019. Prior to excavation, no rebars, railroad spikes, railroad rails or other metal monuments were found marking this corner. Deed descriptions for properties to the west reference the corner, though do not call for a monument at the corner. Excavation at an estimated position for the corner based on deed references and evidence of the roadways to the north, south and west revealed the stone described in the 1858 record at 8 inches below grade. The stone was found to measure 19 inches E-W by 16 inches N-S by 20 inches tall. No specific marks were observed on the rock. The bottom 14 inches of the stone were embedded in the clay layer below the road bed with the stone protruding approximately 6 inches into the bottom of the road. The stone was removed and replaced with a Harrison monument in the same position as the top, center of the stone as originally found.

This corner was originally established as a wood post in 1820.



Kenneth E. Hedge
 Kenneth E. Hedge, County Surveyor

James S. Swift
 James S. Swift, IN LS 20200054
 December 11, 2019

Jackson Township Harrison Township

Section 8 T17N, R1W	Section 9 T17N, R1W
------------------------	------------------------

SECTION CORNER RECORD

SW 750-500

BOONE COUNTY SURVEYOR'S OFFICE

State Plane grid coordinates NAD83 (2011):

North: 1705586.99 East: 3098758.89 (U.S. survey feet)

Type of monument: Harrison, 4" disk 'Section Corner'

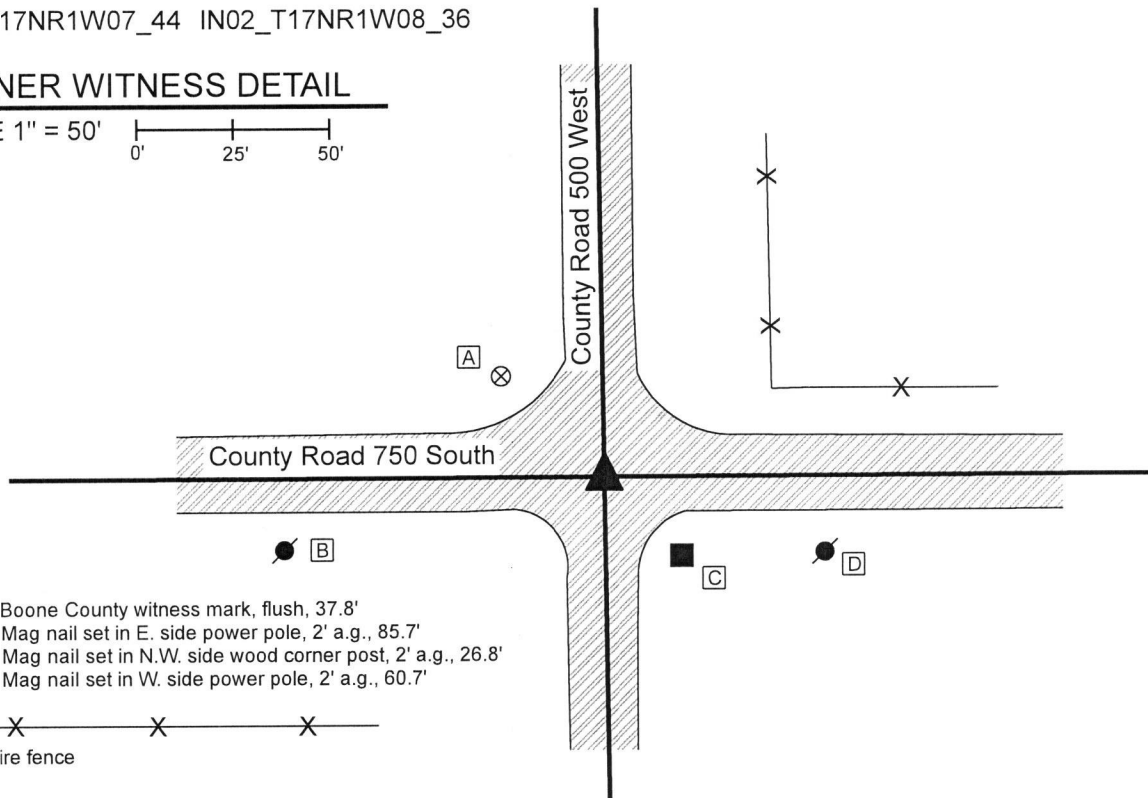
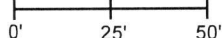
Depth: One inch below adjacent road surface

Indiana tie card references:

IN02_T17NR1W07_44 IN02_T17NR1W08_36

CORNER WITNESS DETAIL

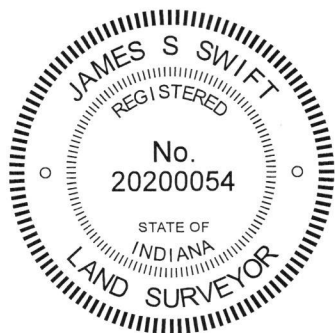
SCALE 1" = 50'



- A - Boone County witness mark, flush, 37.8'
- B - Mag nail set in E. side power pole, 2' a.g., 85.7'
- C - Mag nail set in N.W. side wood corner post, 2' a.g., 26.8'
- D - Mag nail set in W. side power pole, 2' a.g., 60.7'

— X — X — X —
 - Wire fence

The Harrison monument was set over a stone found. BCS records dated March 16, 1896 and September 30, 1912 state, with respect to this corner, "Found rock at true point." A BCS tie card dated July 10, 1968 states "No stone." A correlating entry in the BCS Surveyor's Record states, "No stone was found. Railroad rail set." This corner was excavated on October 22, 2019. Prior to excavation, a Mag nail was found at the surface of the intersecting roads. Excavation revealed a vertical section of railroad rail at four inches below grade, directly below the Mag nail. Further excavation revealed several rocks found at 33 inches deep. This grouping consisted of three small rocks and one obviously larger rock. The larger rock was found to be 7 inches E-W by 7 inches N-S with the top 10 inches of the stone exposed. The entire height of the rock was not measured, but it was not entirely stable at 10 inches exposed, hence is evidently not much taller than what was exposed. The stone was somewhat square shaped and all four sides of the stone were observed to be flat and vertical. An etched "+" mark was distinctly visible on the top of the stone, near the southwest corner of the top. The stone was embedded in the clay layer below the road, with the top of the stone coincident with the bottom of the road bed. The stone was accepted as providing the best available evidence of the corner and is believed to be the same monument called in the 1896 and 1912 records. The stone was left in place and a Harrison monument was set over the etched mark on the top of the stone. The nail and rail, both removed during excavation, had been 0.7 foot north and 0.5 foot west of the mark on the stone. This corner was originally established as a wood post in 1820.



Kenneth E. Hedge
 Kenneth E. Hedge, County Surveyor

James S. Swift
 James S. Swift, IN LS 20200054
 November 19, 2019

Jackson Township

Section 7 T17N, R1W	Section 8 T17N, R1W
------------------------	------------------------

SECTION CORNER RECORD

SW 800-400

BOONE COUNTY SURVEYOR'S OFFICE

State Plane grid coordinates NAD83 (2011):

North: 1702965.30 East: 3104099.58 (U.S. survey feet)

Type of monument: 5/8" rebar with metal cap stamped
'Hendricks County Surveyor' set over stone

Depth: Flush with adjacent road surface

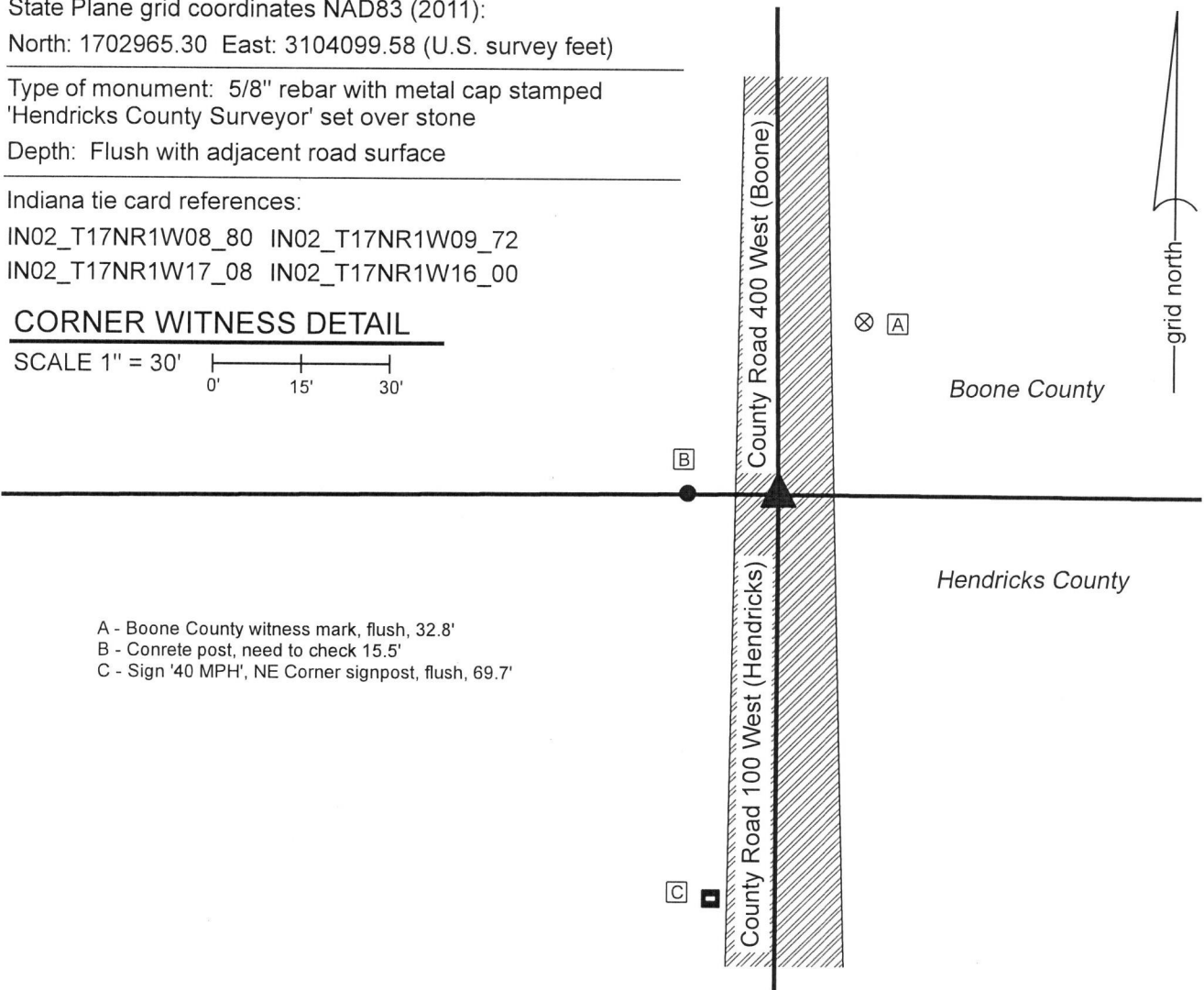
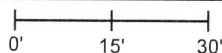
Indiana tie card references:

IN02_T17NR1W08_80 IN02_T17NR1W09_72

IN02_T17NR1W17_08 IN02_T17NR1W16_00

CORNER WITNESS DETAIL

SCALE 1" = 30'



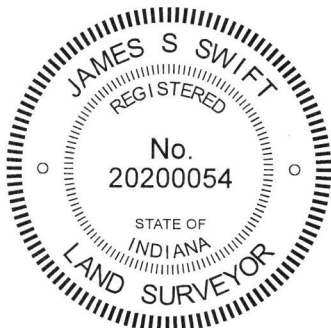
- A - Boone County witness mark, flush, 32.8'
- B - Concrete post, need to check 15.5'
- C - Sign '40 MPH', NE Corner signpost, flush, 69.7'

The Hendricks County monument, in the form of a 5/8 inch diameter rebar with metal cap over a stone, was found in place and held as marking the corner.

A BCS record of February 18-23, 1858 shows the corner as "Rock, 14x15." No recent BCS tie cards were found referencing this corner. A Hendricks County Surveyor tie card dated June 5, 2004 and updated July 16, 2008 states with respect to the corner "Grey granite stone measuring 10" x 7" on top. Cut "+" and placed County disk on 12" rebar." The tie card notes that the road was paved in 2007 and the disk was raised to the surface. Field notes supplied by the Hendricks County Surveyor's Office show that corner was confirmed as described above in July, 2013.

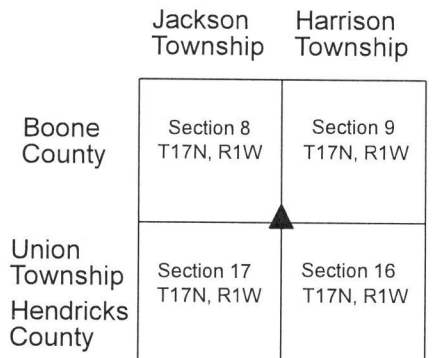
No excavation was performed at this corner, as the Hendricks County Surveyor has clearly already excavated, found the cornerstone and established a monument above the stone. The rebar with Hendricks County cap was accepted as being above the stone and was held as marking the corner.

This corner was originally established as a wood post in 1820.



Kenneth E. Hedge
Kenneth E. Hedge, County Surveyor

James S. Swift
James S. Swift, IN LS 20200054
November 13, 2019



SECTION CORNER RECORD

SW 800-500

BOONE COUNTY SURVEYOR'S OFFICE

State Plane grid coordinates NAD83 (2011):

North: 1702938.41 East: 3098794.48 (U.S. survey feet)

Type of monument: Harrison, 4" disk 'Section Corner'

Depth: One inch below adjacent road surface

Indiana tie card references:

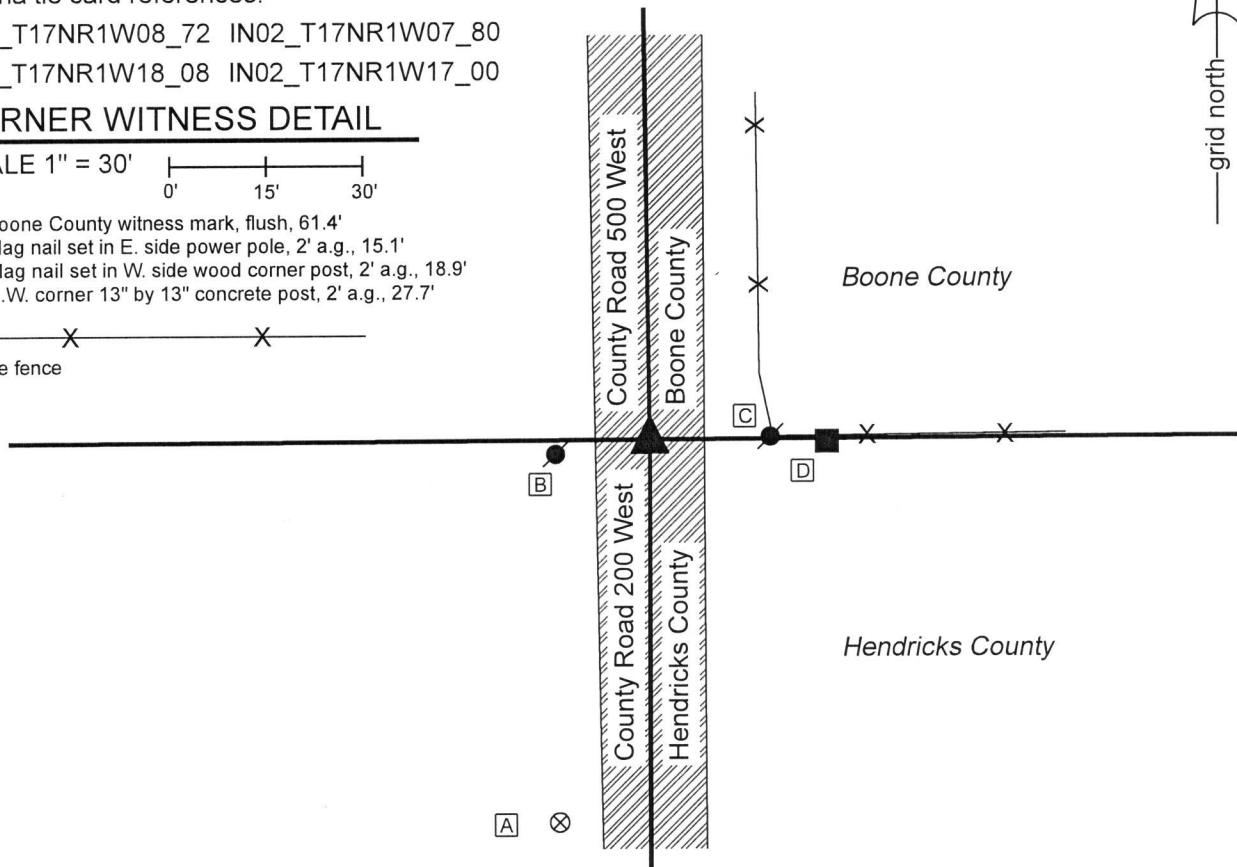
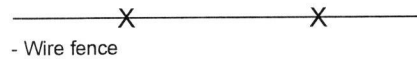
IN02_T17NR1W08_72 IN02_T17NR1W07_80

IN02_T17NR1W18_08 IN02_T17NR1W17_00

CORNER WITNESS DETAIL

SCALE 1" = 30'

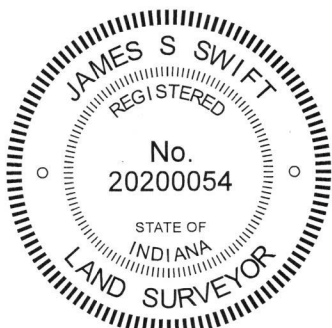
- A - Boone County witness mark, flush, 61.4'
- B - Mag nail set in E. side power pole, 2' a.g., 15.1'
- C - Mag nail set in W. side wood corner post, 2' a.g., 18.9'
- D - S.W. corner 13" by 13" concrete post, 2' a.g., 27.7'



The Harrison monument was set over a vertical section of railroad rail found.

No specific descriptions of this corner were found in the BCS Surveyor's Record beyond the original establishment of the corner as a wood post in 1820. A BCS tie card dated July 10, 1968 calls the corner as "no stone" and demonstrates that the corner was established in the center of the right-of-way of the north-south county road, in line with evidence to the east and west.

No substantial excavation was performed at this corner. A vertical section of railroad rail, the top of which is at 9 inches below grade, was found. This monument is believed to have been set in association with the creation of the 1968 BCS tie card. This corner was excavated by the Hendricks County Surveyor's Office on July 17, 2013. The field notes provided by the HCSO state that a 3 foot hole was excavated around the found railroad rail. The extent of excavation remains evident as cut marks on the surface of the asphalt roadway. The HCSO excavation was accepted as sufficient and the vertical section of railroad rail was accepted as marking the corner. The top 12 inches of the rail were exposed. The rail was left in place and two railroad spikes were driven along side the rail to provide stability of grip for concrete. The top of the rail and spikes were encased in concrete and a Harrison monument was set directly above the rail on October 25, 2019.



Kenneth E. Hedge
 Kenneth E. Hedge, County Surveyor

James S. Swift
 James S. Swift, IN LS 20200054
 November 19, 2019

Jefferson
 Township
 Boone
 County

Union
 Township
 Hendricks
 County

Section 7 T17N, R1W	Section 8 T17N, R1W
Section 18 T17N, R1W	Section 17 T17N, R1W