

SECTION CORNER RECORD

NW 400-500

BOONE COUNTY SURVEYOR'S OFFICE

State Plane grid coordinates NAD83 (2011):

North: 1766677.97 East: 3098367.67 (U.S. survey feet)

Type of monument: Harrison, 4" disk 'Section Corner'

Depth: One inch below adjacent road surface

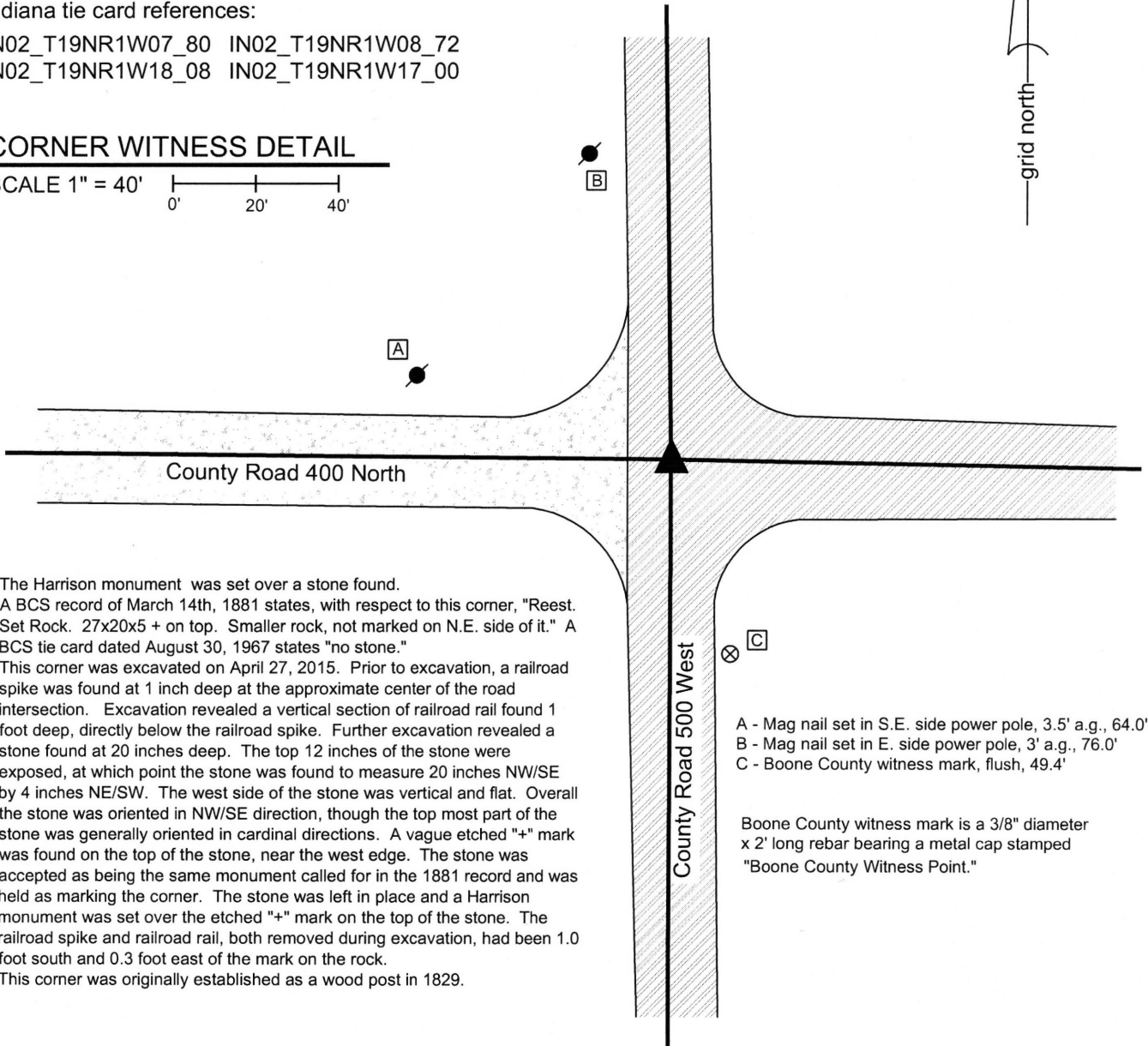
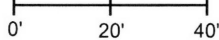
Indiana tie card references:

IN02_T19NR1W07_80 IN02_T19NR1W08_72

IN02_T19NR1W18_08 IN02_T19NR1W17_00

CORNER WITNESS DETAIL

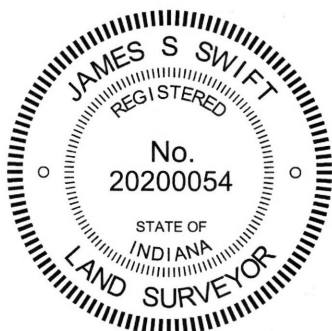
SCALE 1" = 40'



The Harrison monument was set over a stone found. A BCS record of March 14th, 1881 states, with respect to this corner, "Reest. Set Rock. 27x20x5 + on top. Smaller rock, not marked on N.E. side of it." A BCS tie card dated August 30, 1967 states "no stone." This corner was excavated on April 27, 2015. Prior to excavation, a railroad spike was found at 1 inch deep at the approximate center of the road intersection. Excavation revealed a vertical section of railroad rail found 1 foot deep, directly below the railroad spike. Further excavation revealed a stone found at 20 inches deep. The top 12 inches of the stone were exposed, at which point the stone was found to measure 20 inches NW/SE by 4 inches NE/SW. The west side of the stone was vertical and flat. Overall the stone was oriented in NW/SE direction, though the top most part of the stone was generally oriented in cardinal directions. A vague etched "+" mark was found on the top of the stone, near the west edge. The stone was accepted as being the same monument called for in the 1881 record and was held as marking the corner. The stone was left in place and a Harrison monument was set over the etched "+" mark on the top of the stone. The railroad spike and railroad rail, both removed during excavation, had been 1.0 foot south and 0.3 foot east of the mark on the rock. This corner was originally established as a wood post in 1829.

- A - Mag nail set in S.E. side power pole, 3.5' a.g., 64.0'
- B - Mag nail set in E. side power pole, 3' a.g., 76.0'
- C - Boone County witness mark, flush, 49.4'

Boone County witness mark is a 3/8" diameter x 2' long rebar bearing a metal cap stamped "Boone County Witness Point."



Kenneth E. Hedge
Kenneth E. Hedge, County Surveyor

James S. Swift
James S. Swift, IN LS 20200054
March 24 2016

Washington Township

Section 7 T19N, R1W	Section 8 T19N, R1W
Section 18 T19N, R1W	Section 17 T19N, R1W

PHOTOGRAPHIC DOCUMENTATION

Date of photography: April 27, 2015

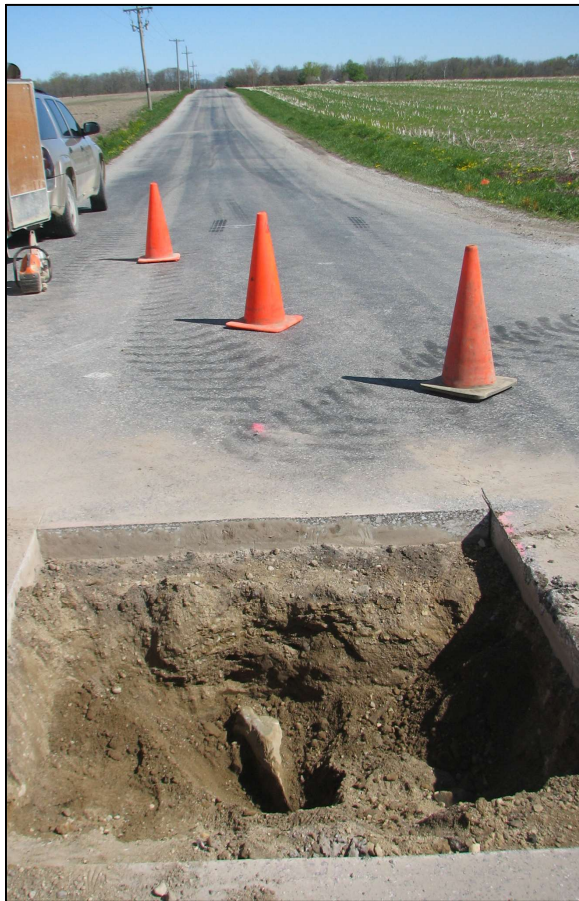
The top of the stone as it was originally exposed. Also visible is the hole from which the rail was pulled, south of the stone.



The stone more fully exposed, showing the vertical west edge and the sloping ridge along the south edge.



View from the south, looking across the stone and north along County Road 500 West.



View from above the stone, looking east along County Road 400 North.



For details and documentation, refer to related sheet "Section Corner Record."

SECTION CORNER RECORD

NW 400-600

BOONE COUNTY SURVEYOR'S OFFICE

State Plane grid coordinates NAD83 (2011):

North: 1766726.97 East: 3093128.13 (U.S. survey feet)

Type of monument: Harrison, 4" disk 'Section Corner'

Depth: Six inches below adjacent gravel road surface

Indiana tie card references:

IN02_T19NR2W12_80 IN02_T19NR1W07_72

IN02_T19NR2W13_08 IN02_T19NR1W18_00

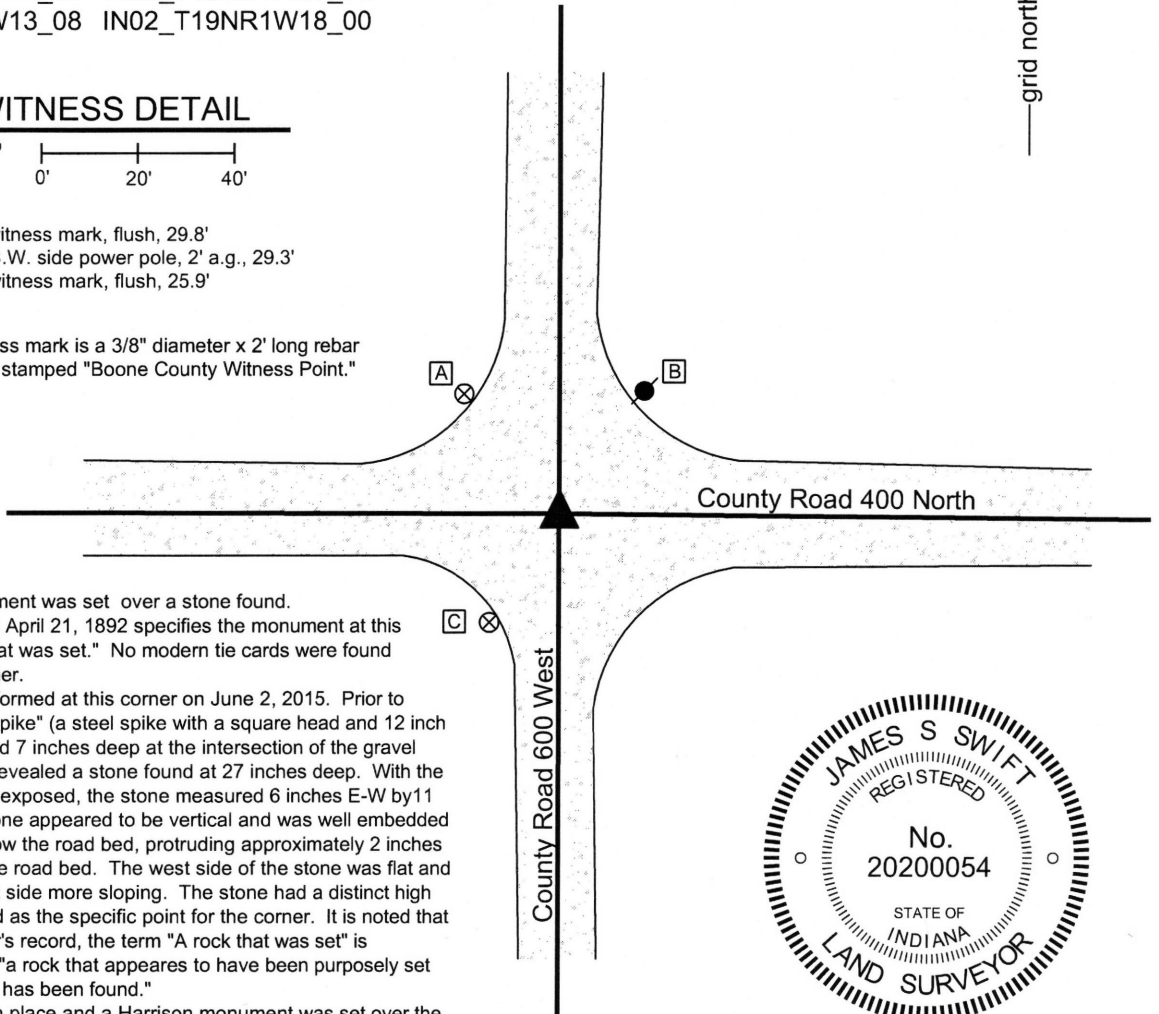


CORNER WITNESS DETAIL

SCALE 1" = 40'

- A - Boone County witness mark, flush, 29.8'
- B - Mag nail set in S.W. side power pole, 2' a.g., 29.3'
- C - Boone County witness mark, flush, 25.9'

Boone County witness mark is a 3/8" diameter x 2' long rebar bearing a metal cap stamped "Boone County Witness Point."

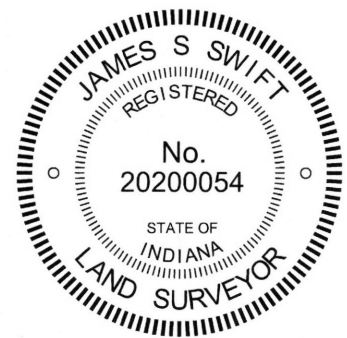


The Harrison monument was set over a stone found. A BCS record dated April 21, 1892 specifies the monument at this corner as "A rock that was set." No modern tie cards were found referencing this corner.

Excavation was performed at this corner on June 2, 2015. Prior to excavation, a "bolt spike" (a steel spike with a square head and 12 inch long shaft) was found 7 inches deep at the intersection of the gravel roads. Excavation revealed a stone found at 27 inches deep. With the top 11 inches stone exposed, the stone measured 6 inches E-W by 11 inches N-S. The stone appeared to be vertical and was well embedded in the clay layer below the road bed, protruding approximately 2 inches into the bottom of the road bed. The west side of the stone was flat and vertical and the east side more sloping. The stone had a distinct high point which was held as the specific point for the corner. It is noted that in the BCS Surveyor's record, the term "A rock that was set" is interpreted to mean "a rock that appears to have been purposely set as a monument and has been found."

The stone was left in place and a Harrison monument was set over the top, high point. The bolt spike, removed during excavation, had been 0.6 of a foot north of the high point of the stone.

This corner was originally established as a wood post in 1819. The federal notes from 1829 subdivision of the township call the corner as closing on the existing post. Hence, though this corner falls on a range line, it is not a double corner.



Washington Township

Kenneth E. Hedge, County Surveyor

James S. Swift, IN LS 20200054

March 24, 2016

Sugar Creek Township

Section 12 T19N, R2W	Section 7 T19N, R1W
Section 13 T19N, R2W	Section 18 T19N, R1W

Jefferson Township

PHOTOGRAPHIC DOCUMENTATION

Date of photography: June 2, 2015

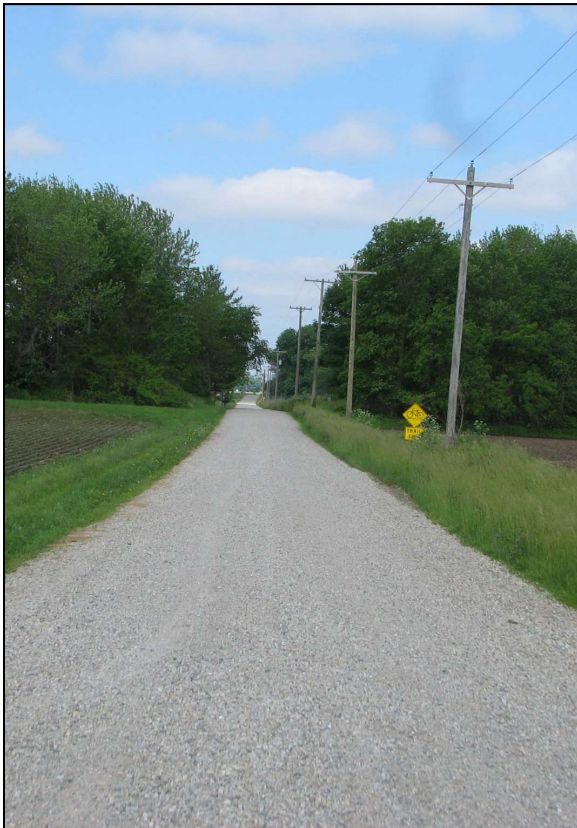
The stone as it was originally exposed.



The stone more fully exposed.



View from above the stone looking west along County Road 400 North.



View from the north, looking across the stone and south along County Road 600 West.



For details and documentation, refer to related sheet "Section Corner Record."

SECTION CORNER RECORD

NW 450-500

BOONE COUNTY SURVEYOR'S OFFICE

State Plane grid coordinates NAD83 (2011):

North: 1769323.26 East: 3098331.23 (U.S. survey feet)

Type of monument: Harrison, 4" disk 'Section Corner'

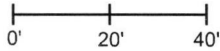
Depth: One inch below adjacent road surface

Indiana tie card references:

IN02_T19NR1W07_44 IN02_T19NR1W08_36

CORNER WITNESS DETAIL

SCALE 1" = 40'

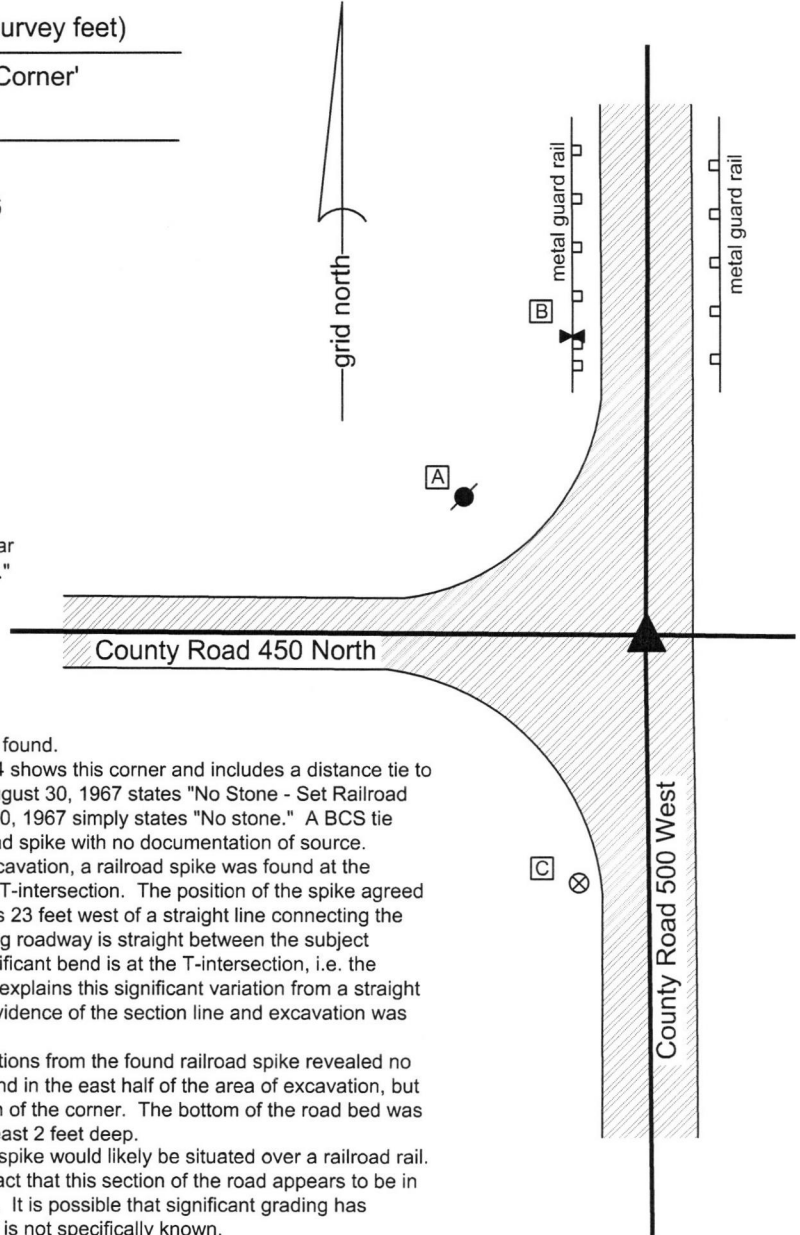


A - Mag nail set in S.E. side power pole, 2' a.g., 45.9'

B - Chisel mark in top of guard rail post, 63.8'

C - Boone County witness mark, flush, 53.4'

Boone County witness mark is a 3/8" diameter x 2' long rebar bearing a metal cap stamped "Boone County Witness Point."



The Harrison monument was set in place of a railroad spike found.

An entry in the BCS Surveyor's Record dated April 1st, 1854 shows this corner and includes a distance tie to one tree but gives no further information. An entry dated August 30, 1967 states "No Stone - Set Railroad Rail." The corresponding BCS tie card, also dated August 30, 1967 simply states "No stone." A BCS tie card dated September 1, 1995 shows the corner as a railroad spike with no documentation of source.

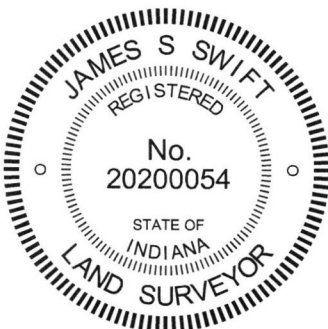
This corner was excavated on August 11, 2015. Prior to excavation, a railroad spike was found at the surface of the asphalt road in the approximate center of the T-intersection. The position of the spike agreed with the 1995 distance ties. It is noted that this monument is 23 feet west of a straight line connecting the adjacent section corners to the north and south. The existing roadway is straight between the subject corner and the adjacent corners and the only apparent, significant bend is at the T-intersection, i.e. the subject corner. No evidence was found in the record which explains this significant variation from a straight line. The existing N-S roadway was accepted as the best evidence of the section line and excavation was performed accordingly.

Excavation of an area extending 2.5 feet in all cardinal directions from the found railroad spike revealed no further evidence of the corner. A fragment of wood was found in the east half of the area of excavation, but was not held as sufficient evidence to determine the position of the corner. The bottom of the road bed was found at 21 inches deep. Excavation was performed to at least 2 feet deep.

Based on the 1967 record, it was expected that the railroad spike would likely be situated over a railroad rail. No rail was found. One possible explanation for this is the fact that this section of the road appears to be in an area of either cut (east and south) or fill (west and north). It is possible that significant grading has occurred at this intersection since 1967, but that information is not specifically known.

In any case, the railroad spike fit with local evidence in the form of the existing roadways to the north, south, and west, and fit with the distance ties on the 1995 tie card. The railroad spike was held as marking the corner. The spike was removed during excavation and replaced with a Harrison monument in the same position.

This corner was originally established as a wood post in 1829.



Kenneth E. Hedge

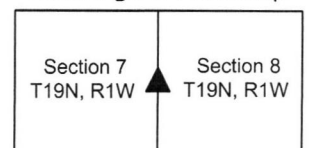
 Kenneth E. Hedge, County Surveyor

James S. Swift

 James S. Swift, IN LS 20200054

March 28, 2016, revised March 23, 2017

Washington Township



SECTION CORNER RECORD

NW 450-600

BOONE COUNTY SURVEYOR'S OFFICE

State Plane grid coordinates NAD83 (2011):

Corner 1: North: 1769377.19 East: 3093130.72 (U.S. survey feet)

Corner 2: North: 1769356.07 East: 3093130.70 (U.S. survey feet)

Type of monument: Harrison, 4" disk 'Section Corner'

Depth: flush (Corner 1), six inches below road surface (Corner 2)

Indiana tie card references:

IN02_T19NR2W12_44 IN02_T19NR1W07_36

CORNER WITNESS DETAIL

SCALE 1" = 50'

- A - Mag nail set in S. side power pole, 2' a.g.
72.2' to Corner 1, 80.3' to Corner 2
- B - Mag nail set in S.W. side power pole, 2' a.g., 26.9'
23.4' to Corner 1, 26.9' to Corner 2
- C - Boone County witness mark, flush,
50.3' to Corner 1, 37.1' to Corner 2
- D - Mag nail set in N. side power pole, 2' a.g., 57.4'
78.1' to Corner 1, 57.4' to Corner 2

The Harrison monument at corner 2 was set over a stone found. The Harrison monument at corner 1 was set at a calculated position, as discussed below. A BCS record of April 1, 1854 shows corner 2 and gives distance ties to two bearing trees but does not state any more specific information about the corner. A BCS record which does not contain a specific date but appears to date prior to 1881 states, with respect to corner 1, "Found 32 links N. of stone set for Sect. 7." The reference to section 7 refers to corner 2. The call of 32 links refers to the expected closing distance for this corner, which is the average of the record federal closing distances at the section corners to the north and south. A BCS tie card dated August 11, 1971 states, with respect to corner 2, "No stone - RRR put in." This document does not refer to corner 1.

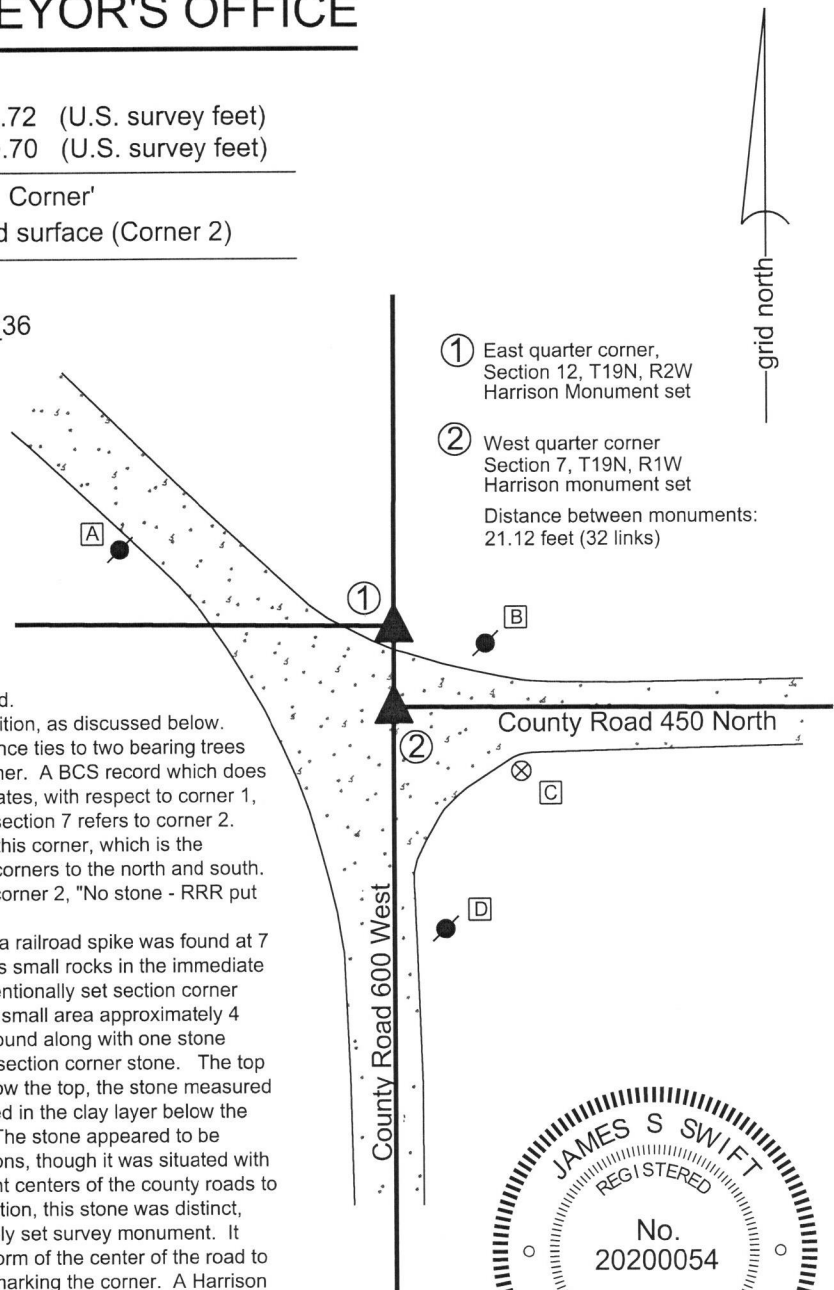
Corner 2 was excavated on July 2, 2015. Prior to excavation, a railroad spike was found at 7 inches deep in the gravel road. Excavation revealed numerous small rocks in the immediate vicinity of the railroad spike, none of which appeared to be intentionally set section corner stones. Further excavation revealed several more stones in a small area approximately 4 feet east of the found railroad spike. Five small stones were found along with one stone which is much larger and bore the distinct characteristics of a section corner stone. The top 12 inches of this larger stone were exposed. At 12 inches below the top, the stone measured 14 inches N-S by 7 inches E-W. The stone was fully embedded in the clay layer below the road, with the top of the stone at the bottom of the road bed. The stone appeared to be standing on end and was generally oriented in cardinal directions, though it was situated with a slight NW/SE orientation. The stone fit well with the apparent centers of the county roads to the south and east. Of the various rocks found at this intersection, this stone was distinct, different, larger, vertical, and appeared to represent a purposely set survey monument. It also fit much better with the evidence of the range line in the form of the center of the road to the south than did the railroad spike. The stone was held as marking the corner. A Harrison monument was set directly over the top, center of the stone. The railroad spike, removed during excavation, had been 3.6 feet west of the stone.

No ties were found remaining from the 1971 tie card, nor was a railroad rail found. It is most likely that the rail has been removed by road grading equipment. It is not known whether the found railroad spike marked the position of the railroad rail.

Corner 1 was excavated on November 21, 2018. Prior to excavation, the position of the corner was computed at 21.12 feet (32 links) north of Corner 2 on the prolongation of the line from the standard corner 1/2 mile south (see BCS Corner NW 400-600) through Corner 2. Excavation revealed a stone found 1.5 feet east and 0.7 feet south of the calculated position. The stone was not well embedded in the ground and significant debris was found below the stone. The stone appears to have been disturbed and was not held as marking the corner. A Harrison monument was set at the calculated position.

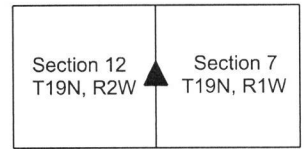
A previous record dated March 28, 2016 showing only Corner 2 set is superceded by the current document.

Corner 1 was originally established as a wood post in 1819. Corner 2 is not an original corner set by the federal government.



January 9, 2019

Sugar Creek Township
Washington Township



Kenneth E. Hedge
Kenneth E. Hedge, County Surveyor

James S. Swift
James S. Swift, IN LS 20200054

SECTION CORNER RECORD

NW 500-500

BOONE COUNTY SURVEYOR'S OFFICE

State Plane grid coordinates NAD83 (2011):

North: 1771968.50 East: 3098340.82 (U.S. survey feet)

Type of monument: Harrison, 4" disk 'Section Corner'

Depth: One inch below adjacent road surface

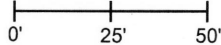
Indiana tie card references:

IN02_T19NR1W06_80 IN02_T19NR1W05_72

IN02_T19NR1W07_08 IN02_T19NR1W08_00

CORNER WITNESS DETAIL

SCALE 1" = 50'



A - Mag nail set in S.E. side power pole, 2' a.g., 143.8'

B - Boone County witness mark, flush, 18.2'

C - Boone County witness mark, flush, 19.4'

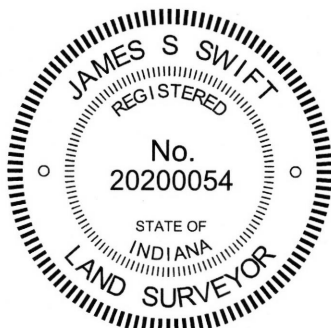
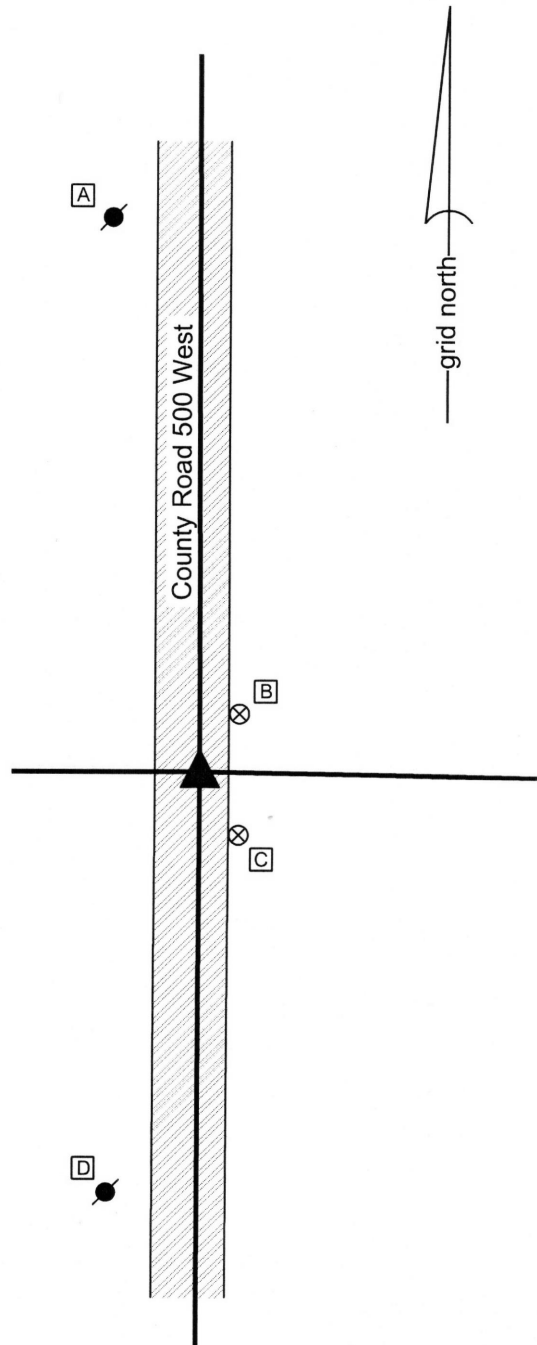
D - Mag nail set in N.E. side power pole, 2' a.g., 109.6'

Boone County witness mark is a 3/8" diameter x 2' long rebar bearing a metal cap stamped "Boone County Witness Point."

The Harrison monument was set over a stone found.

A BCS record dated January 29-February 1, 1870 states, with respect to this corner, "Reest from both trees. Elm dead cut out notch. Set a rock 16.10.7 +." No modern tie cards were found referencing this corner.

Excavation was performed at this corner on April 24, 2015. Prior to excavation, a Mag nail was found at the surface of the asphalt roadway. Excavation revealed a rebar with a metal cap bearing the name of Carl Anderson at 10 inches deep. The rebar was 1.0 foot west and 0.6 foot north of the Mag nail. Further excavation revealed a stone found at 15 inches deep, east of the other two monuments. With 8 inches of the top of the stone exposed, it measured 10 inches N-S by 8 inches E-W and appeared to be vertical and yet much taller. The stone was fully embedded in the clay layer below the road, with the top of the stone at the bottom of the road bed. The stone has a flap top and an etched "+" mark was visible toward the S.W. edge of the top of the stone. The stone was accepted as representing the monument described in the 1870 record and was held as marking the corner. A Harrison monument was set over the etched mark on the top of the stone. The Mag nail and capped rebar were both removed during excavation. The Mag nail had been 1.2 feet north and 1.9 feet west of the mark on the stone. The rebar had been 1.8 feet north and 2.9 feet west of the mark on the stone. This corner was originally established as a wood post in 1829.



Kenneth E. Hedge
Kenneth E. Hedge, County Surveyor

James S. Swift
James S. Swift, IN LS 20200054
March 28, 2016

Washington Township

Section 6 T19N, R1W	Section 5 T19N, R1W
Section 7 T19N, R1W	Section 8 T19N, R1W