

SECTION CORNER RECORD

SW 000-500

BOONE COUNTY SURVEYOR'S OFFICE

State Plane grid coordinates NAD83 (2011):

Corner 1: North: 1745537.70 East: 3098351.72 (U.S. survey feet)

Corner 2: North: 1745537.76 East: 3098321.60 (U.S. survey feet)

Corner 1 only:

Type of monument: Harrison, 4" disk 'Section Corner'

Depth: flush with shoulder of road

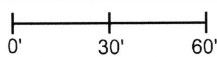
Indiana tie card references:

IN02_T19NR1W31_80 IN02_T19NR1W32_72

IN02_T18NR1W06_08 IN02_T18NR1W05_00

CORNER WITNESS DETAIL

SCALE 1" = 60'



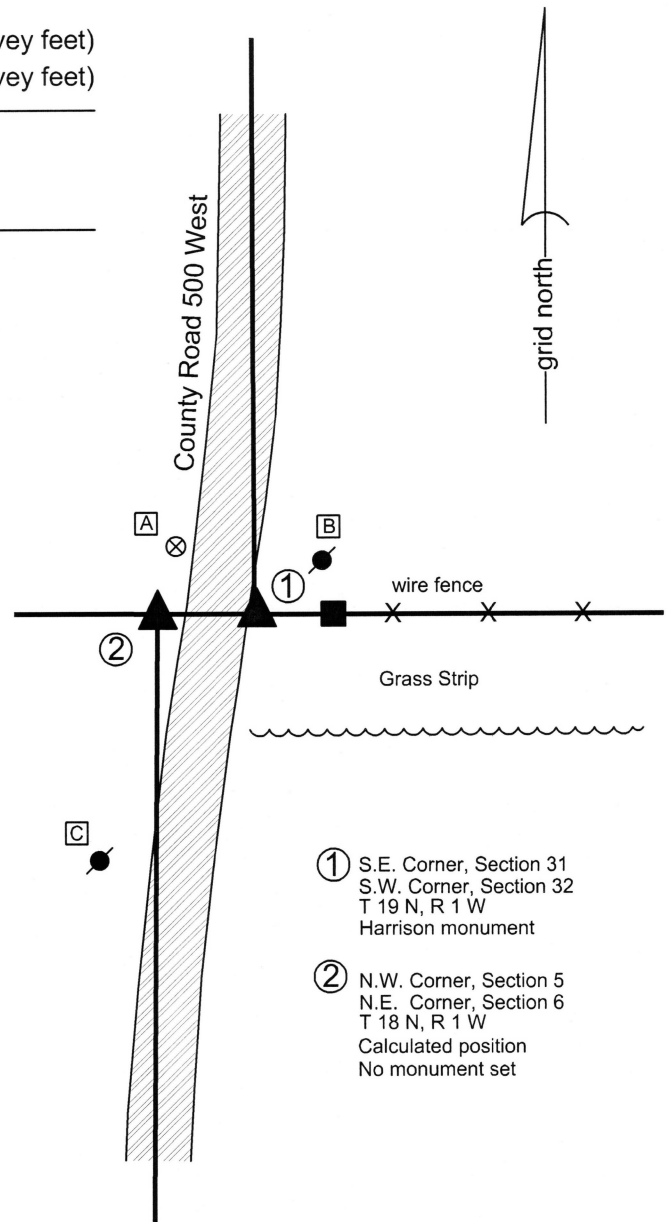
The Harrison monument at Corner 1 was set at a calculated position. No monument was set at Corner 2, as this position falls on an exposed section of metal culvert. The position of Corner 2 is shown as calculated.

No excavation was performed at these corners as the presence of twin culverts indicates that any ancient evidence which may have existed at these corners is no longer present. The position of Corner 2 was established by this office in 1968. A tie card dated September 9, 1968 states "no stone." While the type of monument established that day is not specifically stated, it is known to have been a common practice for BCS field crews to set vertical sections of railroad rails at corners, particularly when the reference remarks are "no stone." The position of Corner 2 was established with respect to deed calls to the corner in both sections 5 and 6. The specific position of the corner was established at the prolongation of a line connecting a railroad rail previously accepted as marking the quarter corner to the south (see Corner SW-050-700 and note that the position held for establishing the corner which is the subject of the current record is that of the railroad rail found during excavation in 2016 but not held as the corner) through a railroad spike found marking the west line of the northwest quarter of section 5 at a point 735 feet south of the subject corner, per calls in Instrument 201300009089 in the Boone County Recorder's Office.

The position of Corner 1 was established in the north-south dimension with respect to the position of Corner 2 and the quarter corner to the east (see Corner NW-000-450). The position of Corner 1 was established in the east-west dimension with respect to the position of the quarter corner to the north (see Corner NW-050-500) and a railroad spike found 448.6 feet north of the corner (deed call of 449.51'), per Document 9601416 in said Recorder's Office. A Harrison monument was set at Corner 1 on September 23, 2016. This monument is directly above a section of metal culvert pipe, but is in sufficient fill to be firmly attached to the ground.

Uncertainties in the north-south dimension of up 1 foot exist with respect to the position of Corner 1 and the previously held position of the corner, per the calls in Document 9601416. Uncertainties of up to 3 feet east-west exist with respect to the relative positions of the two corners, as the original closing distance was 50 links, but the corners, as established herein, are separated by approximately 3 feet less than the original closing distance.

Corner 1 was originally established as a wood post in 1819. Corner 2 was originally established as a wood post in 1820.



- ① S.E. Corner, Section 31
S.W. Corner, Section 32
T 19 N, R 1 W
Harrison monument
- ② N.W. Corner, Section 5
N.E. Corner, Section 6
T 18 N, R 1 W
Calculated position
No monument set

A - Boone County witness mark, flush, 32.2'

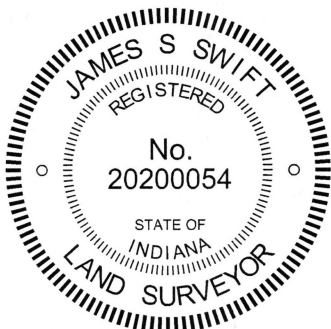
B - Mag nail set in S.W. side power pole, 2' a.g., 24.1'

C - Mag nail set in E. side power pole, 2' a.g., 89.3'

Note: ties are to Corner 1 only, which is a Harrison monument set on the east shoulder of C.R. 500 West, adjacent to the roadway. Corner 2 falls on an area of exposed culvert. No monument was set at this position.

Jefferson Township

Section 31 T19N, R1W	Section 32 T19N, R1W
Section 6 T18N, R1W	Section 5 T18N, R1W



Kenneth E. Hedge
Kenneth E. Hedge, County Surveyor

James S. Swift
James S. Swift, IN LS 20200054

April 27, 2017

SECTION CORNER RECORD

SW 000-550

BOONE COUNTY SURVEYOR'S OFFICE

State Plane grid coordinates NAD83 (2011):

Corner 1: North: 1745542.80 East: 3095700.89 (U.S. survey feet)

Corner 2: North: 1745542.90 East: 3095667.89 (U.S. survey feet)

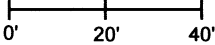
Type of monuments: Harrison, 4" disk 'Section Corner'

Depth: 3" above surrounding ground

Indiana tie card references:

IN02_T19NR1W31_76 IN02_T18NR1W06_04

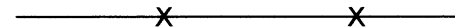
CORNER WITNESS DETAIL

SCALE 1" = 40' 

A - Survey Control Mark, flush
19.5' to Corner 1, 43.8' to Corner 2

B - Survey Control Mark, flush
155.6' to Corner 1, 122.9' to Corner 2

Survey Control Mark is a 3/8" diameter x 2' long rebar bearing a red plastic cap stamped "Control Point."

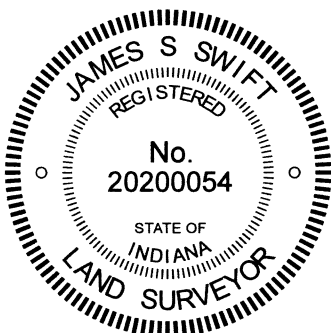
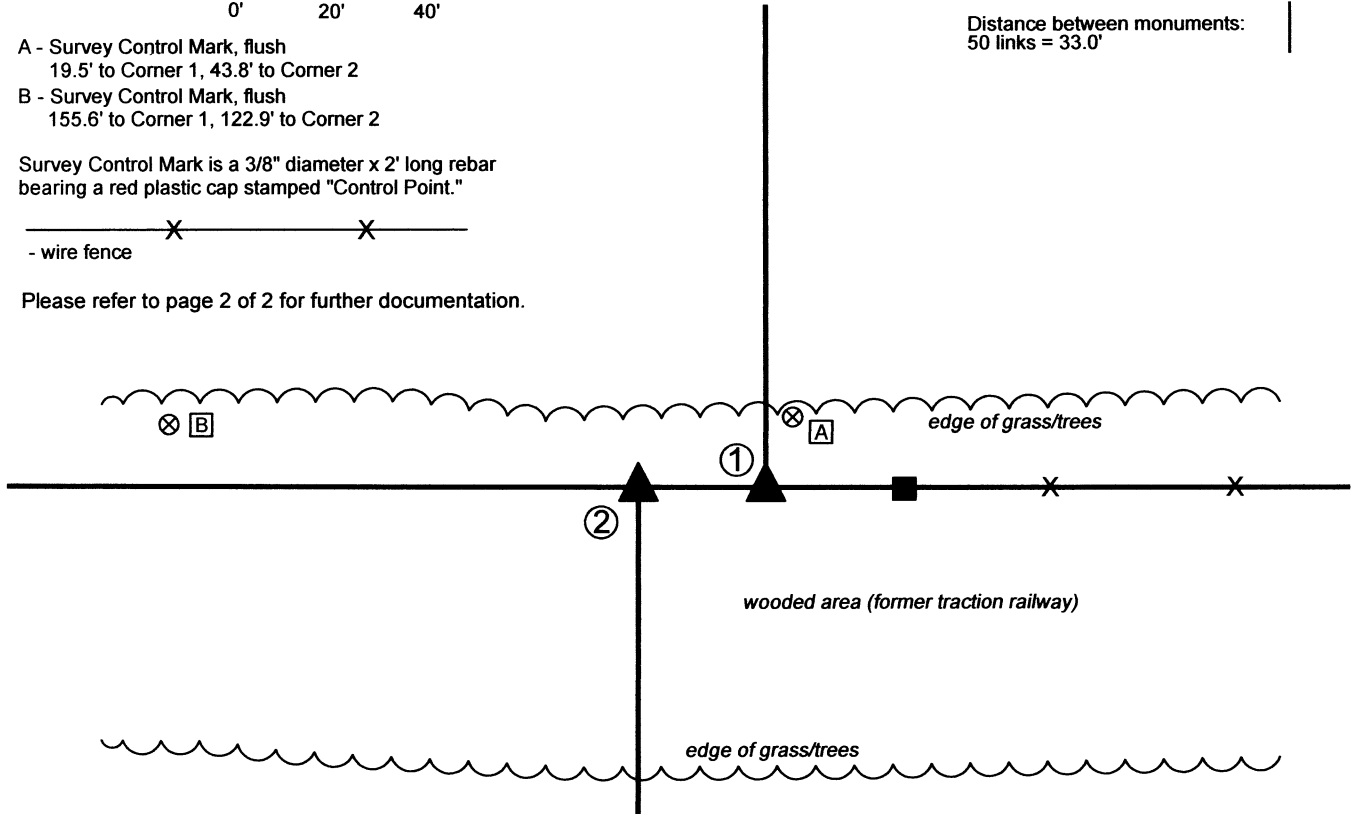

- wire fence


Please refer to page 2 of 2 for further documentation.

① South Quarter Corner
Section 31, T 19 N, R 1 W
Harrison Monument Set

② North Quarter Corner
Section 6, T 18 N, R 1 W
Harrison Monument Set

Distance between monuments:
50 links = 33.0'




Carol Cunningham, County Surveyor


James S. Swift, IN LS 20200054

April 26, 2023 Page 1 of 2

Jefferson
Township

Section 31
T19N, R1W

Section 6
T18N, R1W

SECTION CORNER RECORD

BOONE COUNTY SURVEYOR'S OFFICE

SW 000-550

WRITTEN DOCUMENTATION SHEET

The Harrison monuments were set at computed positions, based on existing east-west fencing, deed calls and the relative positions of the section corners to the east and west.

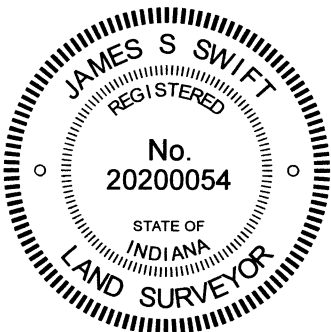
These corners fall along the line between Townships 18 and 19 North, immediately east of the common corner to Townships 18 & 19 North, Ranges 1 & 2 West.

A BCS record dated June 9, 1874 states, with respect to Corner 2, "Reestablished 50 links W. of cor. for Sec. 31. Rock 12.12.6 +." No specific descriptions of Corner 1 were found beyond the original establishment of the corner as a wood post in 1819. It is noted that 50 links is the original closing distance at the northeast corner of Section 6 and represents the correct offset for the subject corners.

No recent BCS tie cards were found referencing the corner, nor were any surveys recorded in the Office of the Boone County Recorder found which reference the corners. Deeds of properties in both sections do reference the corners. The deed for the Wallace property in the southeast quarter of Section 31 (see Instrument 2001015146) calls for a beginning distance of 10.64 chains east of Corner 1 and an east-west distance of 29.55 chains along the south line. The deed for the Strawmeyer property in the southeast and southwest quarters of Section 31 (see Instrument 2001001729) calls for the lines of the Wallace property and calls for a distance of 702.24 feet (10.64 chains) to the southwest corner of the southeast quarter of Section 31 (Corner 1). The deed for the Barbour Revocable Trust property in the northwest quarter of Section 6 (see Instrument 2022008376) contains sufficient distance references to pinpoint the distance, per that deed, between the northwest corner and northeast corner of the northwest quarter of Section 6 (Corner 2).

Reconnaissance was performed at these corners and relative, dependent positions over several years, culminating in a robust effort to identify the precise locations of the corners on April 14 and April 19, 2023. A fence which is mostly on the ground but standing in several places was observed along the north line of a wooded strip. This fence fell generally along the line between the southeast and southwest corners of Section 31. Based on references in the deed for the Budd property in the northeast quarter of Section 6 (see Instrument 9708676), the wooded strip represents the former right-of-way area for the Indianapolis and Northwestern Traction Railroad Company. In the vicinity of the subject corners, a wood corner post with fence to the east and west and cut-off toward the north was found providing potential evidence of Corner 1. Based on the geometry described in the deed for the Strawmeyer property, this post appears to have been held as marking the corner by whomever prepared that description. However, the post is close to the midpoint of the line connecting the southeast and southwest corners of Section 31, which would indicate that the southwest and southeast corners of Section 31 are approximately of equal dimension east-west. The original federal notes for Township 19 North, Range 1 West clearly do not support that interpretation, calling for the south line of the southeast quarter to be 40 chains while the south line of the southwest quarter was 38.76 chains. Furthermore, though the Strawmeyer deed calls for the Wallace dimension of 10.64 chains, the combined dimensions of the Wallace deed (beginning distance and east-west distance) are 40.19 chains, similar to the original federal notes. Furthermore, the calls in the Barbour Trust deed demonstrate a combined distance of 2537.08 feet (38.44 chains) between the northwest corner of Section 6 and the northeast corner of the northwest quarter, which harmonizes well with the dimensions in the Wallace deed.

Upon analysis of the various relevant calls and the original federal distances, the following solution was adopted for purposes of searching for the stone called for the in BCS record: Corner 2, being the northeast corner of the northwest quarter of Section 6, was established at the combined deed distances recited in the Barbour Trust deed (2537.08 feet) east of the position of the northwest corner of Section 6 as it was previously marked by a rebar. Note, in 2018 a stone was found and held as that corner, south and east of the rebar (see BCS Corner SW 000-600), but the rebar was almost certainly the monument held when the Barbour description was created. The computed position also works well with evidence of the east line of the Barbour property and the call in that deed of 293.96 feet west of the northeast corner of the northwest quarter. Holding that position for Corner 2 and establishing Corner 1 at a position 50 links to the east places Corner 1 in a position which matches the Wallace combined deed distances within 2 feet east-west and which matches a computed, proportional solution based on existing monuments and original federal distances, for the south line of Section 31 within 0.5 of a foot, east-west. Clearly, the post at the approximate midpoint of the south line of Section 31 does not work with the preponderance of evidence as supported by deed calls and original federal dimensions. Manual excavation and probing in the vicinity of the computed positions revealed very wet and mucky ground but no stones. Given the presence of the former railroad to the south, disruption of evidence may well have occurred over the years. Having not found the stone called for the in the 1874 record, the computed positions for Corners 1 and 2 were held, per the east-west dimensions discussed above and per the existing east-west fence found standing to the east of the corners. Harrison monuments were set at both corners on April 19, 2023.



Carol Cunningham
Carol Cunningham, County Surveyor

James S. Swift
James S. Swift, IN LS 20200054

April 26, 2023 Page 2 of 2

Jefferson
Township

Section 31
T19N, R1W

▲
Section 6
T18N, R1W

SECTION CORNER RECORD

SW 050-500

BOONE COUNTY SURVEYOR'S OFFICE

State Plane grid coordinates NAD83 (2011):

North: 1742706.27 East: 3098303.44 (U.S. survey feet)

Type of monument: Harrison, 4" disk 'Section Corner'

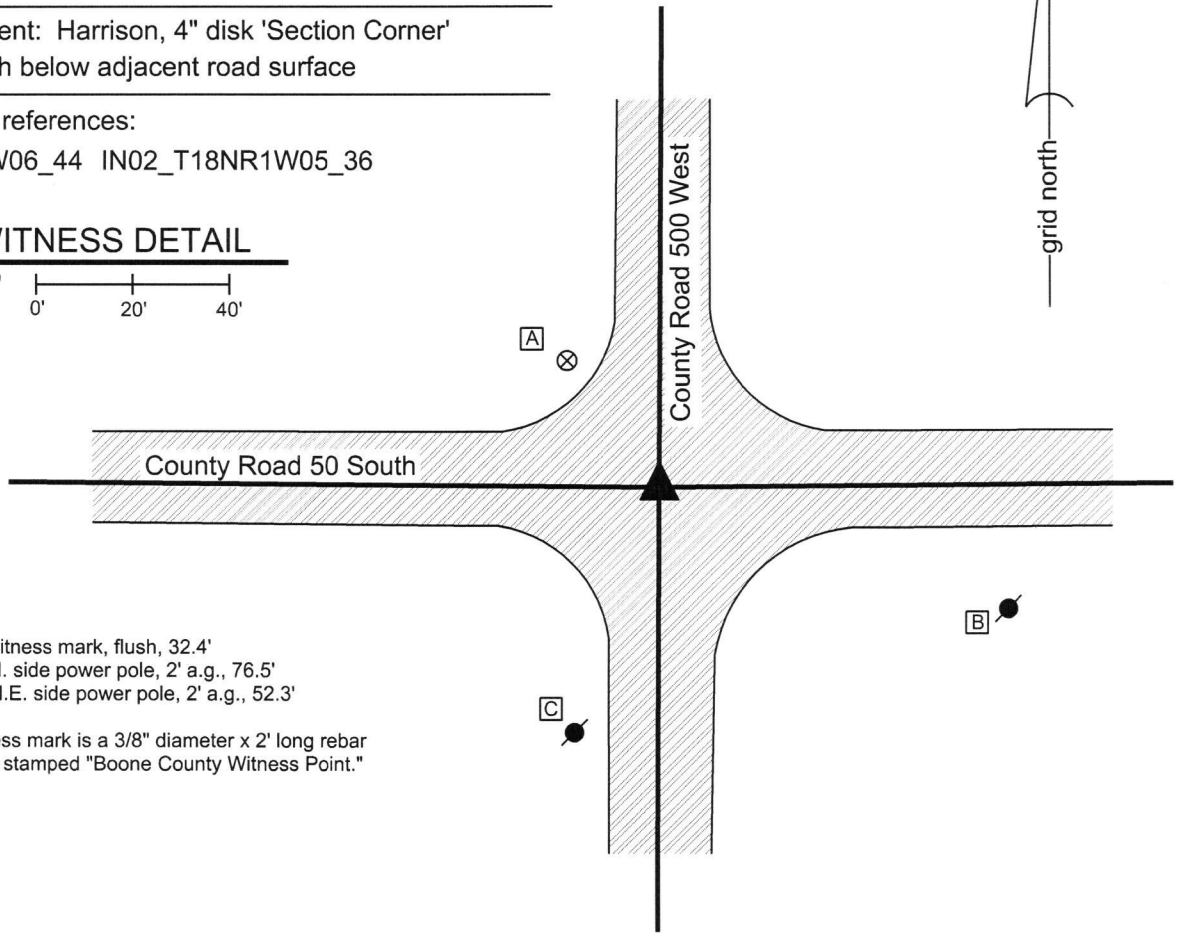
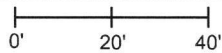
Depth: One inch below adjacent road surface

Indiana tie card references:

IN02_T18NR1W06_44 IN02_T18NR1W05_36

CORNER WITNESS DETAIL

SCALE 1" = 40'



- A - Boone County witness mark, flush, 32.4'
- B - Mag nail set in N. side power pole, 2' a.g., 76.5'
- C - Mag nail set in N.E. side power pole, 2' a.g., 52.3'

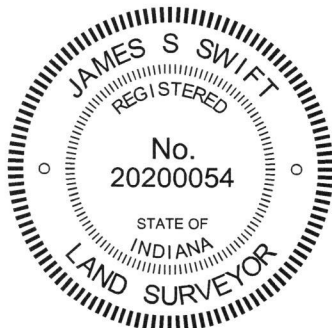
Boone County witness mark is a 3/8" diameter x 2' long rebar bearing a metal cap stamped "Boone County Witness Point."

The Harrison monument was set over a stone found.


A BCS record dated June 28, 1869 states, with respect to this corner, "Reest from stump of oak and stake set. Rock 12,12,5 1/2 + with one under it Rock 9,5 1/2, 5 1/2 +." A BCS tie card August 16, 1968 calls the corner as "No stone."

This corner was excavated on July 13, 2016. Prior to excavation, a monument which appeared to be a nail with no head was found at 4 inches deep in hole in the asphalt in the approximate center of the intersection. Excavation revealed that the monument is actually a section of 1/2 inch diameter rebar sharpened to a point at the top. The rebar was situated in the neck of a vertical section of railroad rail, the top of which was 6 inches deep. It is considered most likely that the rail was set in association with the creation of the 1968 tie card. Further excavation revealed a stone found at 16 inches deep, slightly west of the rebar and rail. The stone was embedded in the clay layer below the road, protruding approximately 3 inches into the bottom of the road bed. The stone measured 11 inches E-W by 6 inches N-S and had a distinct etched + mark on the top, slightly N.E. of the high point of the stone. The north, west and south edges of the stone are flat and vertical. The top of the stone slopes toward the east. Though the confirmed dimensions appeared to vary slightly from the record, this variation of up to 2 inches from the record dimensions has been observed at several other corners. The stone was accepted as marking the corner. The stone was left in place and a Harrison monument was set over the top of the stone above a point which is approximately 2 inches south of the etched + and 2 inches east of the high point. The railroad rail, removed during excavation, had been 0.9 foot east and 0.4 foot north of this point.

This corner was originally established as a wood post in 1820.




Kenneth E. Hedge, County Surveyor


James S. Swift, IN LS 20200054
March 23, 2017

Jefferson Township

Section 6 T18N, R1W	Section 5 T18N, R1W
------------------------	------------------------

PHOTOGRAPHIC DOCUMENTATION

Date of photography: July 13, 2016

View above showing the etched mark on the top of the stone.



View of the stone from above and east.



View from the west looking across the stone and east along County Road 50 South



View from the south looking across the stone and north along County Road 500 West.



For details and documentation, refer to related sheet "Section Corner Record."

SECTION CORNER RECORD

SW 050-600

BOONE COUNTY SURVEYOR'S OFFICE

State Plane grid coordinates NAD83 (2011):

Information for Corner 1 only

North: 1742805.69 East: 3093155.33 (U.S. survey feet)

Type of monument: Harrison, 4" disk 'Section Corner'

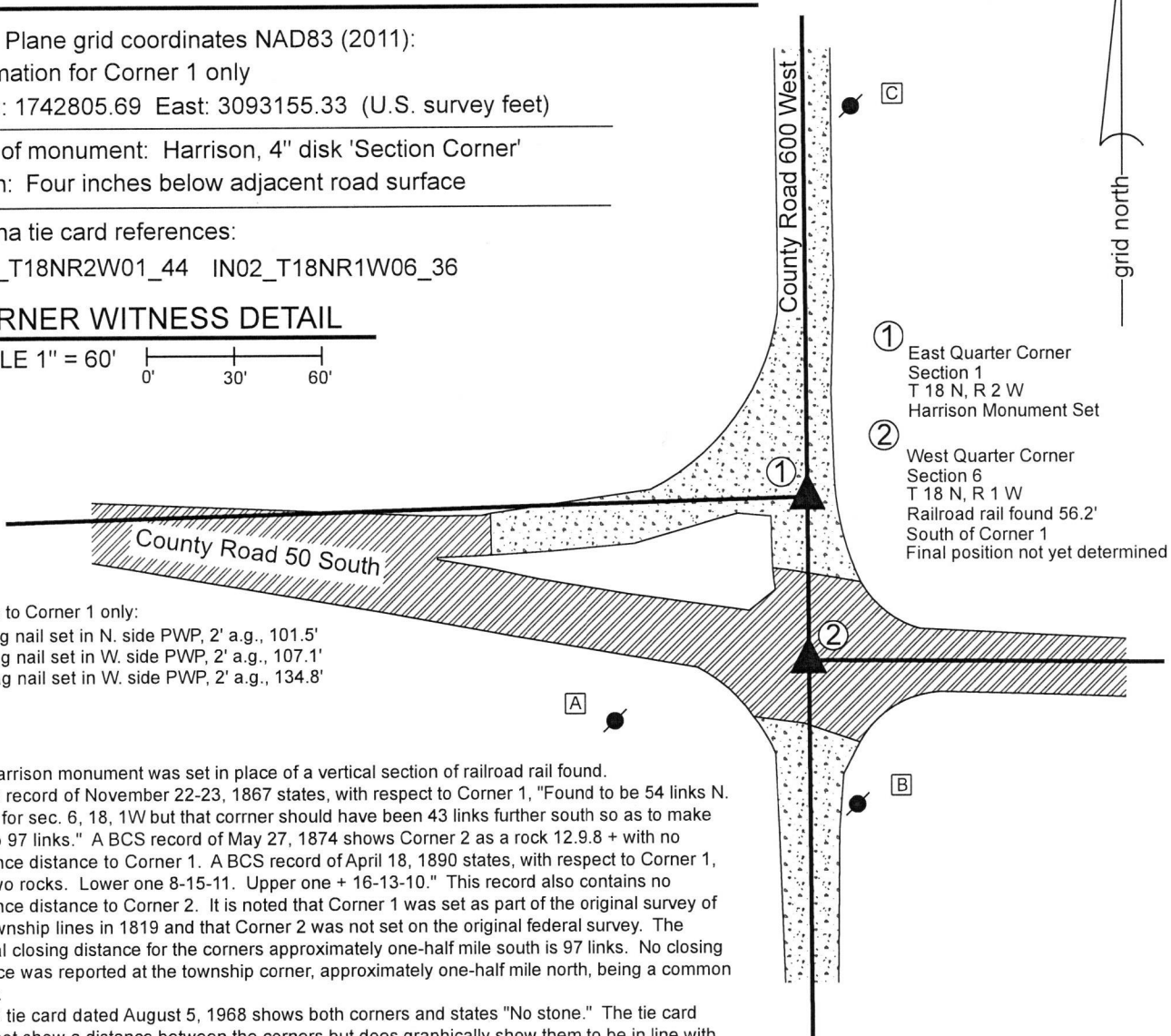
Depth: Four inches below adjacent road surface

Indiana tie card references:

IN02_T18NR2W01_44 IN02_T18NR1W06_36

CORNER WITNESS DETAIL

SCALE 1" = 60'



- ① East Quarter Corner
Section 1
T 18 N, R 2 W
Harrison Monument Set
- ② West Quarter Corner
Section 6
T 18 N, R 1 W
Railroad rail found 56.2'
South of Corner 1
Final position not yet determined



All ties to Corner 1 only:

A - Mag nail set in N. side PWP, 2' a.g., 101.5'

B - Mag nail set in W. side PWP, 2' a.g., 107.1'

C - Mag nail set in W. side PWP, 2' a.g., 134.8'

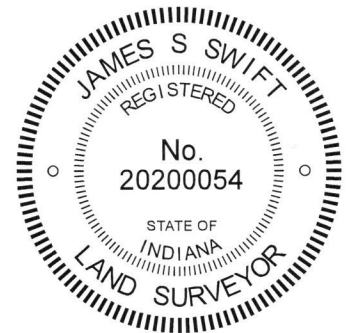
The Harrison monument was set in place of a vertical section of railroad rail found. A BCS record of November 22-23, 1867 states, with respect to Corner 1, "Found to be 54 links N. of Cor for sec. 6, 18, 1W but that corner should have been 43 links further south so as to make the lap 97 links." A BCS record of May 27, 1874 shows Corner 2 as a rock 12.9.8 + with no reference distance to Corner 1. A BCS record of April 18, 1890 states, with respect to Corner 1, "Set two rocks. Lower one 8-15-11. Upper one + 16-13-10." This record also contains no reference distance to Corner 2. It is noted that Corner 1 was set as part of the original survey of the township lines in 1819 and that Corner 2 was not set on the original federal survey. The original closing distance for the corners approximately one-half mile south is 97 links. No closing distance was reported at the township corner, approximately one-half mile north, being a common corner.

A BCS tie card dated August 5, 1968 shows both corners and states "No stone." The tie card does not show a distance between the corners but does graphically show them to be in line with the respective portions of the center of County Road 50 South to the east and west. Corner 1 was excavated on June 20, 2018. Prior to excavation, vertical sections of railroad rail were found marking the generally accepted positions of the respective corners. It is believed that these rails were set in association with the creation of the 1968 tie card. The rails were 56.2 feet apart, as found. The 1867 tie card indicates that they should have been 64 feet (97 links) apart. It was observed that the rails generally fit with the centers of the roads, though the section of road bearing west from Corner 1 is not entirely straight, crossing a small hill slightly to the west of the intersection.

Excavation of an area extending 3 feet south, 9 feet north, 4 feet east and 4 feet west of the rail at Corner 1 revealed no further evidence of the corners. Excavation was performed to approximately 20 inches deep, slightly into the clay layer below the road bed. This area of excavation encompassed an area extending from 53 feet to 65 feet north of the rail at Corner 2 and encompassed a wide enough north-south area to include all visual variations of alignment with the center of County Road 50 South bearing west from the corner.

The found rail at Corner 1 was accepted as representing the best available evidence of the corner and was held as marking the corner. The rail was replaced with a Harrison monument in the same position.

Corner 2 has not yet been excavated and a final position for this corner will be determined at a later date.



Jefferson Township

Section 1 T18N, R2W	Section 6 T18N, R1W
------------------------	------------------------

Kenneth E. Hedge
Kenneth E. Hedge, County Surveyor

James S. Swift
James S. Swift, IN LS 20200054

February 20, 2019

SECTION CORNER RECORD

SW 100-500

BOONE COUNTY SURVEYOR'S OFFICE

State Plane grid coordinates NAD83 (2011):

North: 1740064.84 East: 3098296.54 (U.S. survey feet)

Type of monument: Harrison, 4" disk 'Section Corner'

Depth: One inch below adjacent road surface

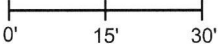
Indiana tie card references:

IN02_T18NR1W06_80 IN02_T18NR1W05_72

IN02_T18NR1W07_08 IN02_T18NR1W08_00

CORNER WITNESS DETAIL

SCALE 1" = 30'



A - Mag nail set in S.E. side power pole, 2' a.g., 37.5'

B - Boone County witness mark, flush, 19.1'

C - Boone County witness mark, flush, 23.4'

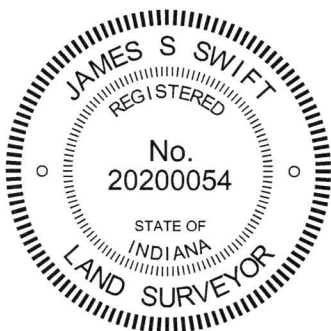
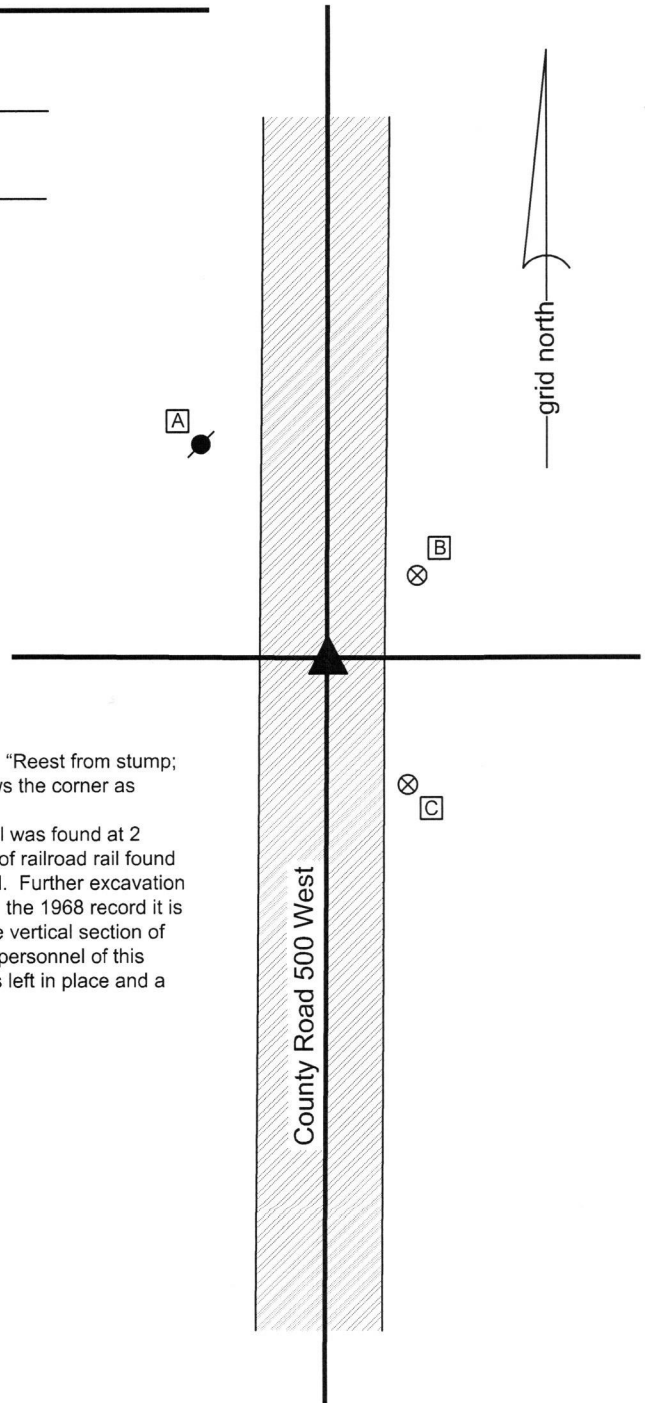
Boone County witness mark is a 3/8" diameter x 2' long rebar bearing a metal cap stamped "Boone County Witness Point."

The Harrison monument was over a vertical section of railroad rail found.

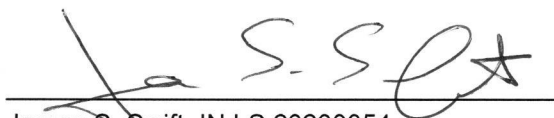
A BCS tie card dated December 16, 1870 states, with respect to this corner, "Reest from stump; of Sugar. Rock 17, 10, 2 1/2 +." A BCS tie card dated August 13, 1968 shows the corner as "Stone Located."

This corner was excavated on July 20, 2016. Prior to excavation, a Mag nail was found at 2 inches deep in a hole in the asphalt. Excavation revealed a vertical section of railroad rail found at 12 inches deep, generally below though slightly southwest of the Mag nail. Further excavation revealed no further evidence of the corner. Though not specifically stated in the 1968 record it is believed most likely that the found stone was removed and replaced with the vertical section of railroad rail at that time. This is known to have been a common practice by personnel of this office during that era. The rail was held as marking the corner. The rail was left in place and a Harrison monument was set over the top of the rail.

This corner was originally established as a wood post in 1820.




Kenneth E. Hedge, County Surveyor


James S. Swift, IN LS 20200054
March 23, 2017

Jefferson Township

Section 6 T18N, R1W	Section 5 T18N, R1W
Section 7 T18N, R1W	Section 8 T18N, R1W

SECTION CORNER RECORD

SW 100-550

BOONE COUNTY SURVEYOR'S OFFICE

State Plane grid coordinates NAD83 (2011):

North: 3095664.07 East: 1740083.23 (U.S. survey feet)

Type of monument: 24" length of 5/8-inch diameter rebar with aluminum cap stamped 'Boone County Surveyor'

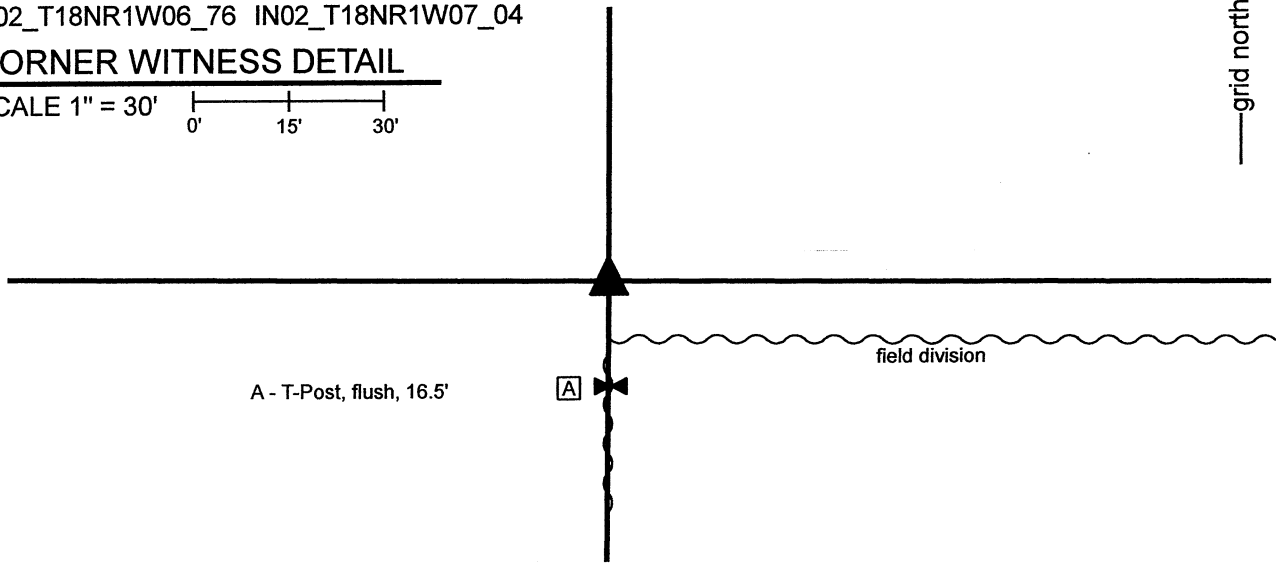
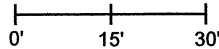
Depth: Fourteen inches below surrounding ground

Indiana tie card references:

IN02_T18NR1W06_76 IN02_T18NR1W07_04

CORNER WITNESS DETAIL

SCALE 1" = 30'



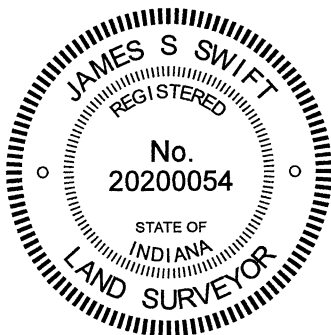
The rebar with Boone County Surveyor cap was set in a computed position.

A BCS Record dated May 11, 1872 states, with respect to this corner, "Reest from N. W. Ash stump. Rock 16,11,9 +."

No recent BCS tie cards were found referencing this corner, nor were any surveys recorded in the Office of the Boone County Recorder found referencing the corner.

Substantial investigation of this corner and relevant evidence was performed on November 16 and 17, 2021. The corner falls in a tilled field and the only visible evidence of the corner in the immediate vicinity is a steel t-post in-line with a field division to the south and east. A rebar with cap 'Dodge S0288' was found marking the terminus of an east-west fence at a point 783 feet east of the northwest corner of Section 7. Adjacent to this post is a rebar with a metal cap stamped 'Carl Anderson ENGR.' It was observed that a position computed for the corner being at the double-distance prolongation of a line connecting the Harrison monument at the northeast corner of Section 7 (see BCS Corner SW 100-500) and the Dodge rebar fit remarkably in the east-west dimension with the aforementioned t-post and field division to the south. It was also observed that the previously noted wood corner post and Carl Anderson rebar fell on the line connecting this computed position and the northwest corner of Section 7 (see BCS Corner SW 100-600 CLS). The computed position fell approximately 1 rod (16.5 feet) north of the t-post and east-west field division and fell in-line with the north-south field division. Extensive probing and manual excavation in the vicinity of the computed position and t-post revealed no further evidence of the corner. The computed position based on the northeast corner of Section 7 and Dodge rebar was held. The t-post is clearly south of the more reliable evidence of the Dodge rebar, Anderson rebar and east-west fence along the westerly part of the north line of the northwest quarter of Section 7. A rebar with metal cap stamped 'Boone County Surveyor' was set 14 inches deep in the tilled field on November 23, 2021.

This corner was originally established as a wood post in 1820.



Kenneth E. Hedge, County Surveyor

James S. Swift, IN LS 20200054
December 1, 2021

Jefferson
Township

Section 6
T18N, R1W

Section 7
T18N, R1W

SECTION CORNER RECORD

SW 100-600

BOONE COUNTY SURVEYOR'S OFFICE

State Plane grid coordinates NAD83 (2011):

Corner 1: North: 1740160.94 East: 3093174.78 (U.S. survey feet)

Corner 2: North: 1740095.77 East: 3093175.28 (U.S. survey feet)

Type of monument: Harrison, 4" disk 'Section Corner'

Depth: Six inches below adjacent gravel road surface

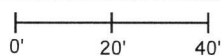
Indiana tie card references:

IN02_T18NR2W01_80 IN02_T18NR1W06_72

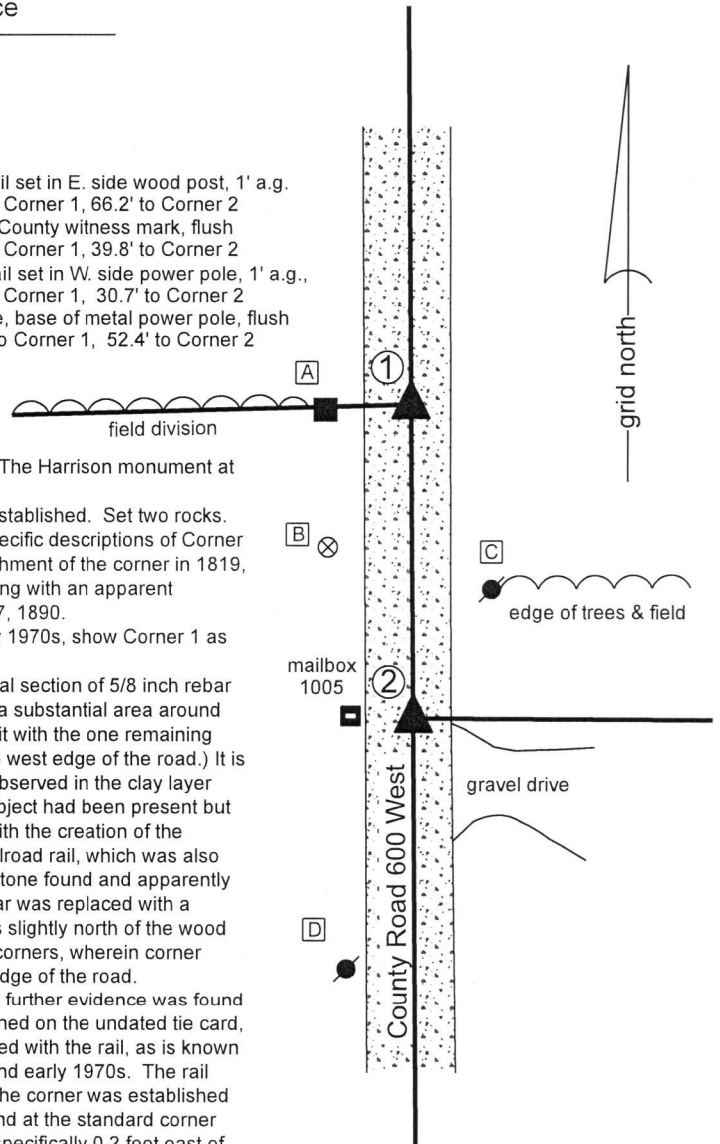
IN02_T18NR2W12_08 IN02_T18NR1W07_00

CORNER WITNESS DETAIL

SCALE 1" = 40'



- A - Mag nail set in E. side wood post, 1' a.g., 18.0' to Corner 1, 66.2' to Corner 2
- B - Boone County witness mark, flush 34.3' to Corner 1, 39.8' to Corner 2
- C - Mag nail set in W. side power pole, 1' a.g., 41.2' to Corner 1, 30.7' to Corner 2
- D - N. edge, base of metal power pole, flush 116.4' to Corner 1, 52.4' to Corner 2



① S.E. Corner, Section 1
N.E. Corner, Section 12
T 18 N, R 2 W

② S.W. Corner, Section 6
N.W. Corner, Section 7
T 18 N, R 1 W

The Harrison monument at Corner 1 was set in place of a rebar found. The Harrison monument at Corner 2 was set in place of a vertical section of railroad rail found.

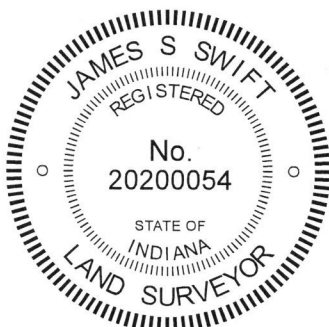
A BCS record of October 9, 1887 states, with respect to Corner 2, "Reestablished. Set two rocks. One 10.8.7 +. Top one 12.11.7 +. Two small rocks under both." No specific descriptions of Corner 1 were found in the BCS Surveyor's Record beyond the original establishment of the corner in 1819, though the corner is mentioned as a terminal point for measurement along with an apparent reference to location of the range line in a record on April 18 and May 17, 1890.

BCS tie cards with no date, believed to date from the late 1960s or early 1970s, show Corner 1 as "Stone Located" and Corner 2 as "Found Stones No Measurements."

Corner 1 was excavated on June 26, 2018. Prior to excavation, a vertical section of 5/8 inch rebar was found marking the apparent location of the corner. Excavation of a substantial area around the rebar did not reveal further hard evidence of the corner. The rebar fit with the one remaining distance tie shown on the undated tie card (18' to the corner post on the west edge of the road.) It is noted that apparent disruption in the form of sand amidst the clay was observed in the clay layer below the road bed immediately below the rebar, indicating that some object had been present but removed. It is believed most likely that the stone found in association with the creation of the undated tie card was removed and replaced with a vertical section of railroad rail, which was also later removed. The rebar was accepted as marking the position of the stone found and apparently removed by the BCS crew which created the undated tie card. The rebar was replaced with a Harrison monument in the same position. It is noted that the corner falls slightly north of the wood post on the west edge of the road, which fits with observations at other corners, wherein corner stones are found slightly to one side or another of the old posts on the edge of the road.

Minor excavation was performed around Corner 2 on June 27, 2018. No further evidence was found beyond the vertical section of railroad rail. Though the rail is not mentioned on the undated tie card, it is believed most likely that the found stones were removed and replaced with the rail, as is known to have been a procedure followed by BCS crews from the late 1960s and early 1970s. The rail was accepted as marking the position of the stones previously found. The corner was established on the range line as defined by the position of Corner 1 and a stone found at the standard corner one-half mile south. A Harrison Monument was set in place of the rail, specifically 0.2 foot east of the center of mass of the top of the rail.

Corner 1 was established in 1819. Corner 2 was established in 1820, 97 links (64 feet) south of Corner 1.



Kenneth E. Hedge
Kenneth E. Hedge, County Surveyor

James S. Swift
James S. Swift, IN LS 20200054
July 25, 2018

Jefferson Township

Section 1 T18N, R2W	Section 6 T18N, R1W
Section 12 T18N, R2W	Section 7 T18N, R1W