

# SECTION CORNER RECORD

SW 000-1000

## BOONE COUNTY SURVEYOR'S OFFICE

State Plane grid coordinates NAD83 (2011):

Corner 1: North: 1745562.22 East: 3071932.64 (U.S. survey feet)

Corner 2: North: 1745562.24 East: 3071959.04 (U.S. survey feet)

Type of monument: Harrison, 4" disk 'Section Corner'

Depth: Six inches below adjacent road surface

Indiana tie card references:

IN02\_T19NR2W33\_72 IN02\_T19NR2W32\_80

IN02\_T18NR2W05\_08 IN02\_T18NR2W04\_00

### CORNER WITNESS DETAIL

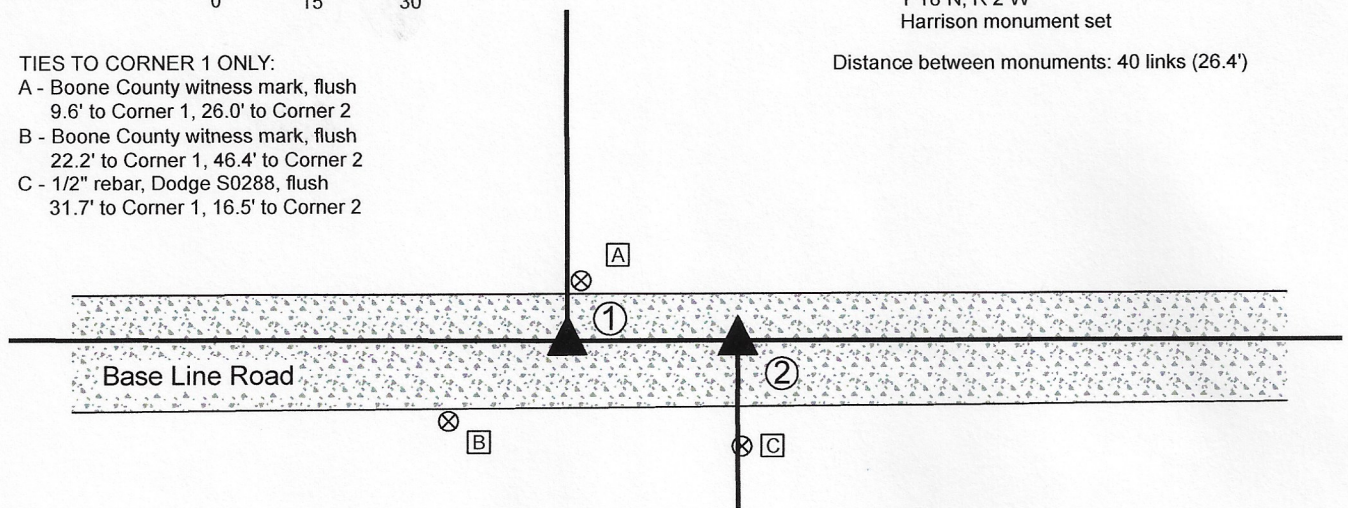
SCALE 1" = 30'

TIES TO CORNER 1 ONLY:

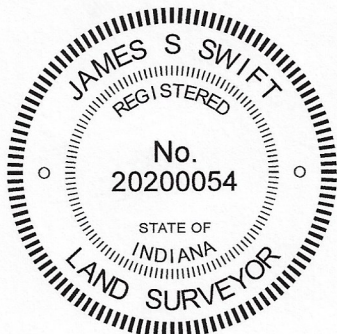
- A - Boone County witness mark, flush  
9.6' to Corner 1, 26.0' to Corner 2
- B - Boone County witness mark, flush  
22.2' to Corner 1, 46.4' to Corner 2
- C - 1/2" rebar, Dodge S0288, flush  
31.7' to Corner 1, 16.5' to Corner 2

- ① S.E. Corner, Section 32  
S.W. Corner, Section 33  
T 19 N, R 2 W  
Harrison monument set
- ② N.E. Corner, Section 5  
N.W. Corner, Section 4  
T 18 N, R 2 W  
Harrison monument set

Distance between monuments: 40 links (26.4')



The Harrison monument at Corner 1 was set in place of a stone found. The position of Corner 2 is 26.4 feet (40 links) east of Corner 1. The final position of Corner 2 will be established on the township line after the standard corner to the east (NW 000-950) is determined and monumented. A BCS record of 1857 shows corner 2 as "set post." No specific descriptions of Corner 1 were found in the BCS Surveyor's Record beyond the original establishment of the corner as a wood post in 1819. Corner 1 is noted as the terminal point for measurements in an entry of 1867, indicating that some monument was likely present from which to measure at that time. A BCS tie card dated October 16, 1969 states "No stone. RRR set." The tie card is referenced to Corner 2 but it is believed that the railroad rail was set at that time at Corner 1. A BC tie card dated January 18, 1994 shows a railroad spike at Corner 2, 26.4 feet east of Corner 1. The 1994 tie card demonstrates that, at that time, existing north-south fences existing to the north of Corner 1 and to the south of Corner 2. Both of these corners were excavated on January 3, 2020. Prior to excavation, a section of railroad rail leaning substantially toward the west was found providing evidence of Corner 1 and broken off piece of steel t-post was found providing evidence of Corner 2. The tops of the two monuments were found at 26.9 feet apart. Excavation revealed a stone found at 4 inches deep, slightly north and west of the railroad rail. The stone was 8 inches E-W by 7 inches N-S by 6 inches tall, embedded in the clay layer below the rather thin road bed. No specific etched marks were observed on the stone. Excavation of an area extending 1 foot east, 5 foot north, 1 foot south and 6 feet west of the piece of steel t-post revealed no further evidence of Corner 2. The found stone was held as marking the position of Corner 1. The stone was removed and replaced with a Harrison monument in the position of the top, center of the stone. The top of the railroad rail, removed during excavation, had been 2.0 feet south and 0.9 foot east of the top, center of the stone. Corner 2 was established on the township line at the record federal closing distance of 40 links east of Corner 1. A Harrison monument was set at this position on June 4, 2020. The broken-off piece of steel t-post, removed during excavation, had been 2.0 feet south and 1.4 feet east of this position.



*Kenneth E. Hedge*  
Kenneth E. Hedge, County Surveyor

*James S. Swift*  
James S. Swift, IN LS 20200054  
June 17, 2020

Jefferson Township

Section 32 T19N, R2W	Section 33 T19N, R2W
Section 5 T18N, R2W	Section 4 T18N, R2W



# SECTION CORNER RECORD

# SW 000-1100

## BOONE COUNTY SURVEYOR'S OFFICE

State Plane grid coordinates NAD83 (2011):

Corner 2: North: 1745581.47 East: 3066646.78709 (U.S. survey feet)

Type of monument: Harrison, 4" disk 'Section Corner'

Depth: Six inches below adjacent road surface

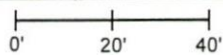
Indiana tie card references:

IN02\_T19NR2W32\_72 IN02\_T19NR2W31\_80

IN02\_T18NR2W06\_08 IN02\_T18NR2W05\_00

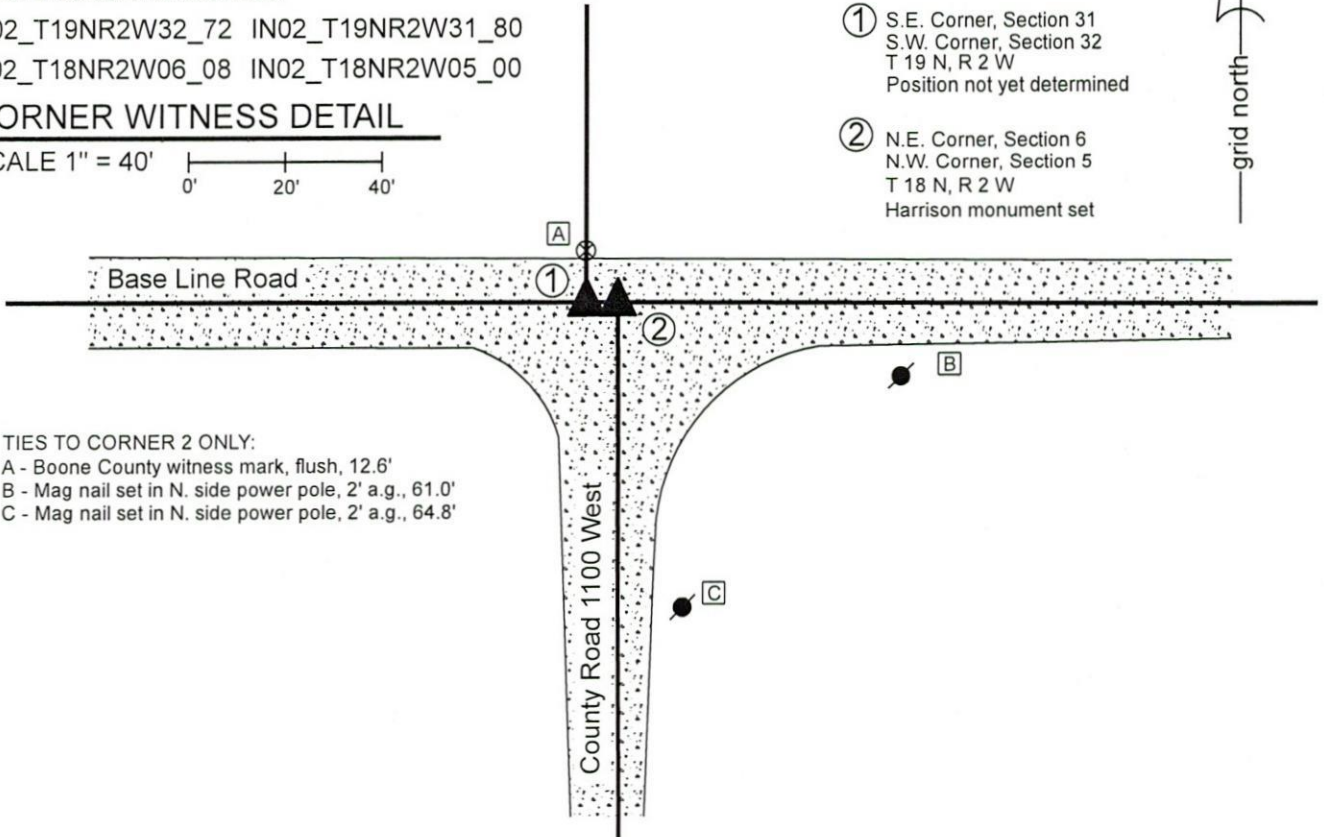
### CORNER WITNESS DETAIL

SCALE 1" = 40'



① S.E. Corner, Section 31  
S.W. Corner, Section 32  
T 19 N, R 2 W  
Position not yet determined

② N.E. Corner, Section 6  
N.W. Corner, Section 5  
T 18 N, R 2 W  
Harrison monument set



TIES TO CORNER 2 ONLY:

A - Boone County witness mark, flush, 12.6'

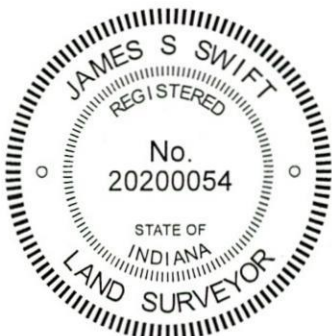
B - Mag nail set in N. side power pole, 2' a.g., 61.0'

C - Mag nail set in N. side power pole, 2' a.g., 64.8'

The Harrison monument at Corner 2 was set over a stone found. The position of Corner 1 has not been fully established.

A BCS tie card dated September 20, 1912 states, with respect to Corner 1, "Located by measurement from rock at quarter section corner in section 6 and by line from quarter section corner on section line between 5 and 6. Set stone 10x10x14 flat, sandy rock, 10x12x6 under." No specific descriptions of Corner 1 were found in the BCS Surveyor's Record beyond the original establishment of the corner as a wood post in 1819. It is noted that the federal closing distance at this corner is 10 links (6.6 feet) east. A BCS tie card dated October, 1971 states, with respect to Corner 2, "Stone located. RRR 6" from stone, S. side."

These corners were both excavated on December 27, 2019. Prior to excavation, a vertical section of railroad rail was found at the intersection of Base Line Road and County Road 1100 West, per the 1971 tie card. Excavation at Corner 2 revealed the lower stone described in the 1912 record at 27 inches deep. The stone measured 12 inches N-S by 10 inches E-W on the top and was buried 10 inches into the clay layer below the road bed. The top, center of the stone was 6 inches north of the position of the railroad rail, removed during excavation. No specific marks were observed etched on the stone. The stone was accepted as being the lower monument called in the 1912 record. Excavation of an area 3 feet east-west by 4 feet north-south, centered on a position 6.6 feet west of the found stone revealed no evidence of Corner 1. The stone found at Corner 2 was left in place and a Harrison monument was set over the top, center of the stone, 6 inches south of the position of the rail, in agreement with the 1971 tie card. The position of Corner 1 will be established on the township line at 6.6 feet west of Corner 2 after the standard corner 1/2 mile east (NW 000-1050) is established.



*Kenneth E. Hedge*  
Kenneth E. Hedge, County Surveyor

*James S. Swift*  
James S. Swift, IN LS 20200054

January 8, 2020

Jefferson Township

Section 31 T19N, R2W	Section 32 T19N, R2W
Section 6 T18N, R2W	Section 5 T18N, R2W

# SECTION CORNER RECORD

# SW 000-1100

## BOONE COUNTY SURVEYOR'S OFFICE

State Plane grid coordinates NAD83 (2011):

Corner 1: North: 1745581.50 East: 3066640.19 (U.S. survey feet)

Corner 2: North: 1745581.47 East: 3066646.79 (U.S. survey feet)

Monument: Harrison monument, 4" disk 'Section Corner'  
Depth: Six inches below adjacent road surface

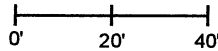
Indiana tie card references:

IN02\_T19NR2W32\_72 IN02\_T19NR2W31\_80

IN02\_T18NR2W06\_08 IN02\_T18NR2W05\_00

### CORNER WITNESS DETAIL

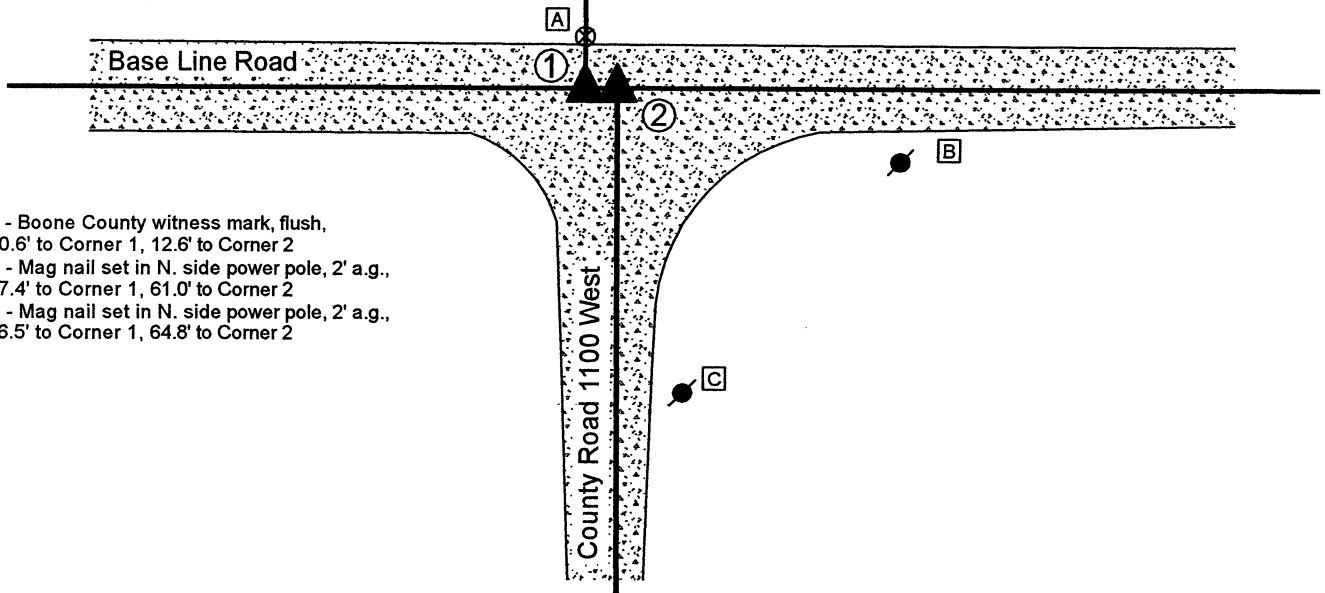
SCALE 1" = 40'



① S.E. Corner, Section 31  
S.W. Corner, Section 32  
T 19 N, R 2 W  
Harrison monument set

② N.E. Corner, Section 6  
N.W. Corner, Section 5  
T 18 N, R 2 W  
Harrison monument set

Distance between corners: 10 links = 6.6'

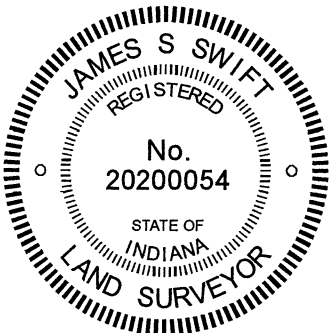


A - Boone County witness mark, flush,  
10.6' to Corner 1, 12.6' to Corner 2

B - Mag nail set in N. side power pole, 2' a.g.,  
67.4' to Corner 1, 61.0' to Corner 2

C - Mag nail set in N. side power pole, 2' a.g.,  
66.5' to Corner 1, 64.8' to Corner 2

The Harrison monument at Corner 2 was set over a stone found. Corner 1 was established on the township line, 6.6 feet west of Corner 2. A BCS tie card dated September 20, 1912 states, with respect to Corner 2, "Located by measurement from rock at quarter section corner in section 6 and by line from quarter section corner on section line between 5 and 6. Set stone 10x10x14 flat, sandy rock, 10x12x6 under." No specific descriptions of Corner 1 were found in the BCS Surveyor's Record beyond the original establishment of the corner as a wood post in 1819. It is noted that the federal closing distance at this corner is 10 links (6.6 feet) east. A BCS tie card dated October, 1971 states, with respect to Corner 2, "Stone located. RRR 6" from stone, S. side." These corners were both excavated on December 27, 2019. Prior to excavation, a vertical section of railroad rail was found at the intersection of Base Line Road and County Road 1100 West, per the 1971 tie card. Excavation at Corner 2 revealed the lower stone described in the 1912 record at 27 inches deep. The stone measured 12 inches N-S by 10 inches E-W on the top and was buried 10 inches into the clay layer below the road bed. The top, center of the stone was 6 inches north of the position of the railroad rail, removed during excavation. No specific marks were observed etched on the stone. The stone was accepted as being the lower monument called in the 1912 record. Excavation of an area 3 feet east-west by 4 feet north-south, centered on a position 6.6 feet west of the found stone revealed no evidence of Corner 1. The stone found at Corner 2 was left in place and a Harrison monument was set over the top, center of the stone, 6 inches south of the position of the rail, in agreement with the 1971 tie card, on December 27, 2019. Corner 1 was established on the westerly prolongation of the township line as defined by Corner 2 and the south quarter corner of Section 32, T19N, R2W, (see BCS Corner NW 000-1050). A Harrison monument was set at this position on December 4, 2020.



*Kenneth E. Hedge*  
Kenneth E. Hedge, County Surveyor

*James S. Swift*  
James S. Swift, IN LS 20200054

January 8, 2020 (revised December 15, 2020)

Jefferson Township

Section 31 T19N, R2W	Section 32 T19N, R2W
Section 6 T18N, R2W	Section 5 T18N, R2W

# SECTION CORNER RECORD

SW 050-1000

## BOONE COUNTY SURVEYOR'S OFFICE

State Plane grid coordinates NAD83 (2011):

CORNER (8X8 WOOD POST): North: 1742647.68 East: 3071977.15 (U.S. survey feet)

WITNESS (CAPPED REBAR): North: 1742647.68 East: 3071976.60 (U.S. survey feet)

Corner Monument: 8"x8" wood post

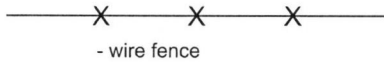
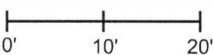
Witness Monument: 36" length of 5/8" diameter rebar with metal cap (Boone County Surveyor)

Indiana tie card references:

IN02\_T18NR2W05\_44 IN02\_T18NR2W04\_36

### CORNER WITNESS DETAIL

SCALE 1" = 20'

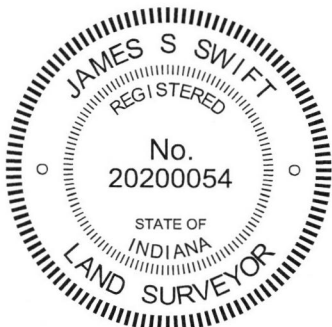
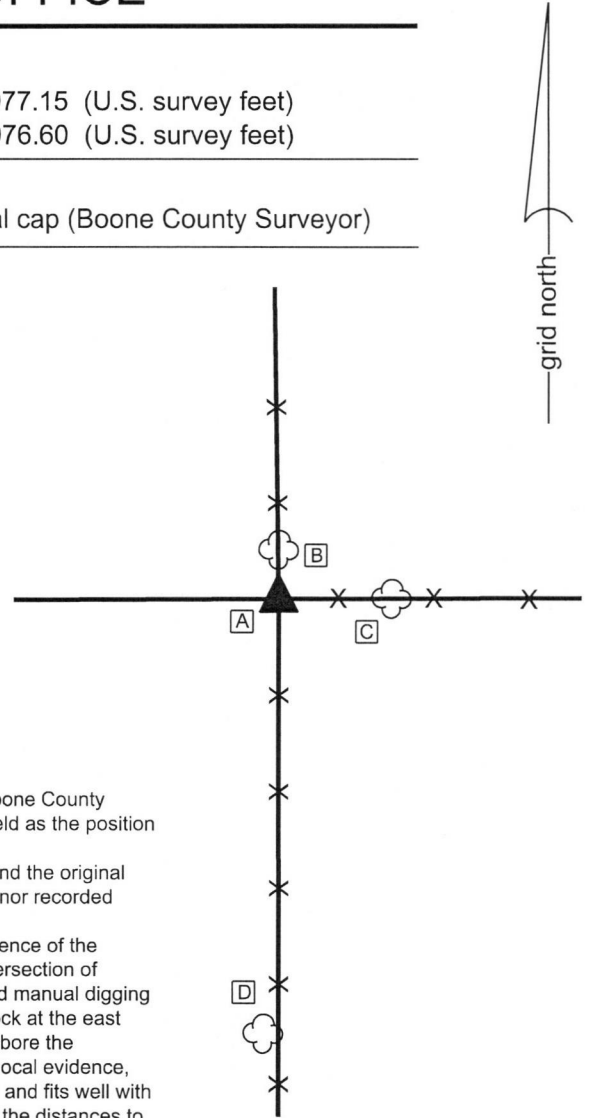


- A - 5/8 inch diameter rebar with metal cap, 0.55' to center of post.
- B - South edge, 20 inch diameter elm tree, 3.4' to center of post.
- C - West edge, 42 inch diameter oak tree, 10.0' to center of post.
- D - North edge, 14 inch diameter oak tree, 43.1' to center of post.

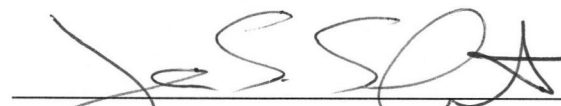
The wood post was found in place. The 5/8 inch rebar with metal cap stamped 'Boone County Surveyor' is intended to act as a witness to the corner. The center of the post is held as the position of the corner and the rebar represents an accessory witness.

No specific descriptions of the corner were found in the BC Surveyor's Record beyond the original establishment of the corner as a wood post in 1820. Neither recent BCS tie cards nor recorded surveys were found referencing the corner.

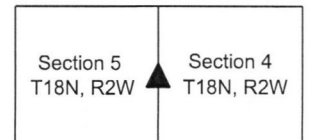
This corner was excavated on October 16, 2018. The obvious, above ground evidence of the corner was found in the form of an 8 inch by 8 inch wood corner post at the intersection of standing fences to the north, south and east. Excavation in the form of probing and manual digging around the post revealed several rocks found at the west edge of the post and 1 rock at the east edge of the post. All of the found rocks appeared to be bracing the post and none bore the characteristics of a stone purposely set to mark the corner. The post fits well with local evidence, being the headpost at the intersection of ancient fences in three cardinal directions and fits well with the relative positions of evidence of proximate corners, particularly with respect to the distances to the approximate section corners to the north and south in proportional relation to the distances reported in the original federal notes of 1820 showing 40 chains to the south and 44 chains closing on the township line to the north. The center of the post was accepted as marking the corner. The rebar set as a witness at the west side of the post is 0.55 foot west of the center of the post.



  
Kenneth E. Hedge, County Surveyor

  
James S. Swift, IN LS 20200054  
November 14, 2018

Jefferson Township





# SECTION CORNER RECORD

## BOONE COUNTY SURVEYOR'S OFFICE

SW 050-1100

State Plane grid coordinates NAD83 (2011):  
 North: 1742608.73 East: 3066667.51 (U.S. survey feet)

Type of monument: Harrison, 4" disk 'Section Corner'  
 Depth: Six inches below adjacent road surface

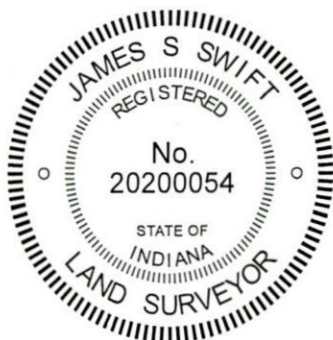
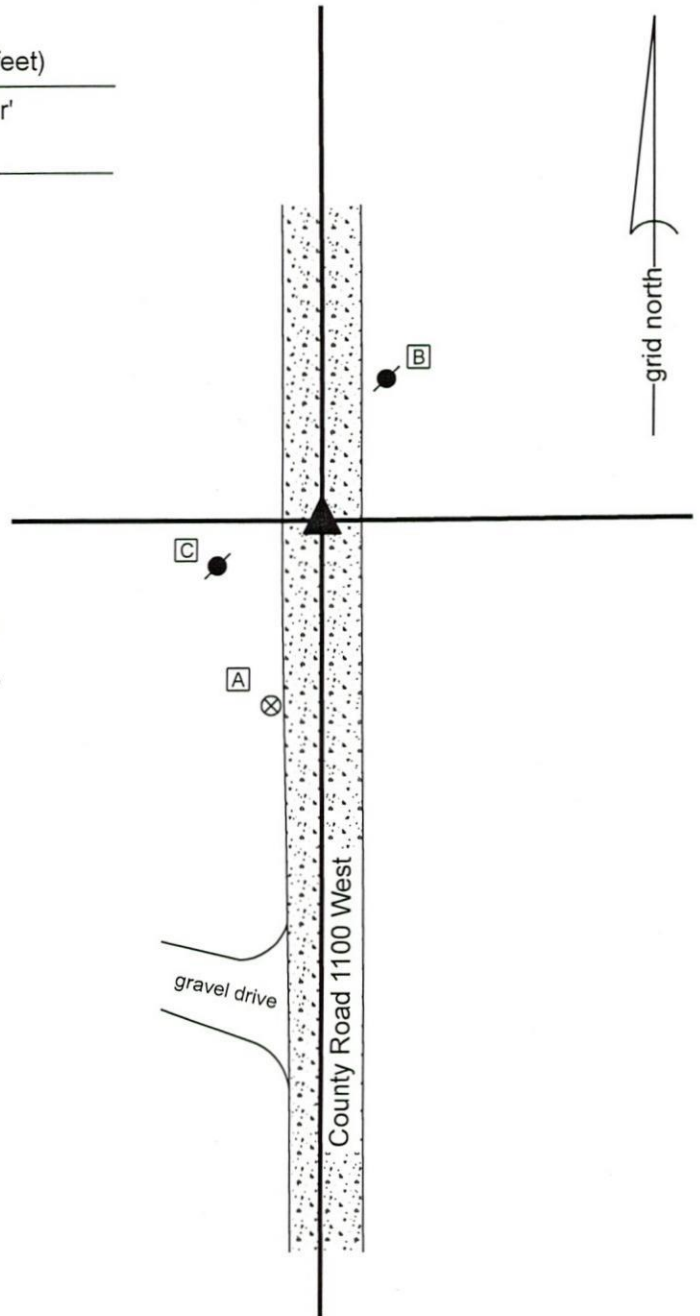
Indiana tie card references:  
 IN02\_T18NR2W06\_44 IN02\_T18NR2W05\_36

### CORNER WITNESS DETAIL

SCALE 1" = 40'

- A - Boone County witness mark, flush, 39.6'
- B - Mag nail set in S. side power pole, 2' a.g., 32.2'
- C - Mag nail set in E. side power pole, 2' a.g., 23.6'

The Harrison monument was set in place of a stone found.  
 A BCS record of March 24,25, 1857 states, with respect to this corner, "Reest. Set Rock 12x26." A BCS tie card dated October 9, 1971 states "No stone - RRR put in."  
 This corner was excavated on December 27, 2019. Prior to excavation, a 5/8 inch diameter rebar was found in the center of the north-south road, approximately in-line with a tree line to the west. Excavation revealed the stone described in the 1857 record at 4 inches deep, slightly east of the rebar. The top of the stone was 5 inches x 5 inches. The stone was removed and measured to have been 26 inches tall by 12 inches N-S by 10 inches E-W. It had been embedded in the clay layer below the road, protruding approximately 4 inches into the bottom of the road bed. No specific marks were found etched on the stone. No railroad rail (RRR) was found. The stone was accepted as being the same monument described in the 1857 record and was held as marking the corner. A Harrison monument was set in the same horizontal position as the top, center of the stone as found. The rebar, removed during excavation, had been 1.1 foot west of the center of the top of the stone.  
 This corner was originally established as a wood post in 1820.



*Kenneth E. Hedge*  
 Kenneth E. Hedge, County Surveyor

*James S. Swift*  
 James S. Swift, IN LS 20200054  
 January 8, 2020

Jefferson Township

Section 6 T18N, R2W	Section 5 T18N, R2W
------------------------	------------------------

# SECTION CORNER RECORD

SW 100-1000

## BOONE COUNTY SURVEYOR'S OFFICE

State Plane grid coordinates NAD83 (2011):

North: 1740003.33 East: 3071980.53 (U.S. survey feet)

Type of monument: Harrison, 4" disk 'Section Corner'

Depth: One inch below adjacent road surface

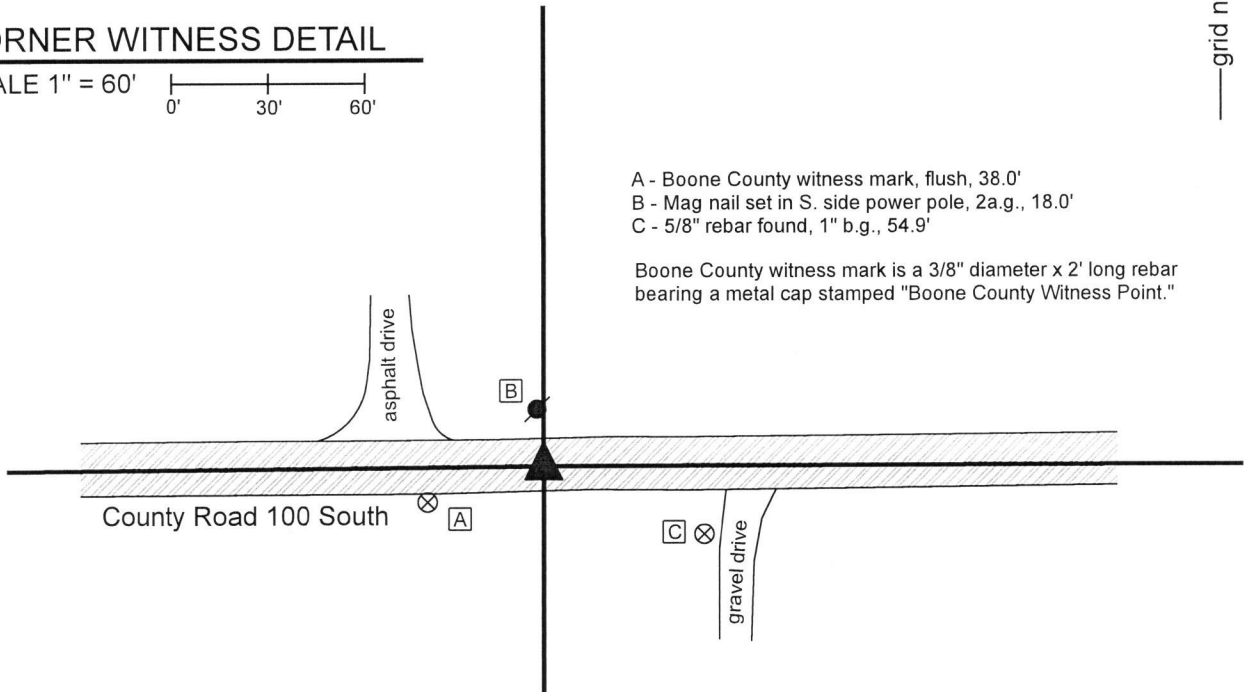
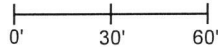
Indiana tie card references:

IN02\_T18NR2W05\_80 IN02\_T18NR2W04\_72

IN02\_T18NR2W08\_08 IN02\_T18NR2W09\_00

### CORNER WITNESS DETAIL

SCALE 1" = 60'



- A - Boone County witness mark, flush, 38.0'
- B - Mag nail set in S. side power pole, 2a.g., 18.0'
- C - 5/8" rebar found, 1" b.g., 54.9'

Boone County witness mark is a 3/8" diameter x 2' long rebar bearing a metal cap stamped "Boone County Witness Point."



The Harrison monument was set in place of a vertical section of railroad rail.

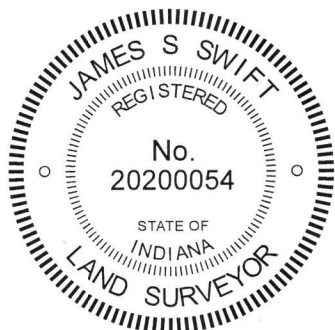
A BCS record dated November 2, 1857 states, with respect to this corner, "Reest. from stumps of both trees. Set Rock 16,12,5 +."

A BCS tie card dated October 17, 1968 calls the corner "No stone - RRR set."

This corner was excavated on July 26, 2019. Prior to excavation, a mag nail was found at the surface of the road. Excavation revealed a railroad rail found at 5 inches deep, the top, center of which was slightly northwest of the nail. Further excavation of an area extending 2.5 feet north, 2.5 feet east, 3.5 feet south and 3.5 feet west of the nail and rail did not reveal any further evidence of the corner. Further probing approximately 18 inches north of the area of excavation also yielded no further evidence. The bottom of the road bed was found at 16 inches deep. Excavation was performed to at least 18 inches deep. Numerous fist sized rocks were found at the bottom of the road bed, indicating that the area had been previously wet and muddy, which may explain why no stone was found.

The rail was held as marking the corner. The rail was removed and replaced with a Harrison monument in the same horizontal position. The nail had been 0.2 foot south and 0.2 foot east of the top, center-of-mass of the rail.

This corner was originally established as a wood post in 1820.



Kenneth E. Hedge, County Surveyor

James S. Swift, IN LS 20200054  
August 28, 2019

Jefferson Township

Section 5 T18N, R2W	Section 4 T18N, R2W
Section 8 T18N, R2W	Section 9 T18N, R2W

# SECTION CORNER RECORD

SW 100-1050

## BOONE COUNTY SURVEYOR'S OFFICE

State Plane grid coordinates NAD83 (2011):

North: 1739980.62 East: 3069331.45 (U.S. survey feet)

Type of monument: Harrison, 4" disk 'Section Corner'

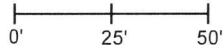
Depth: Four inches below adjacent road surface

Indiana tie card references:

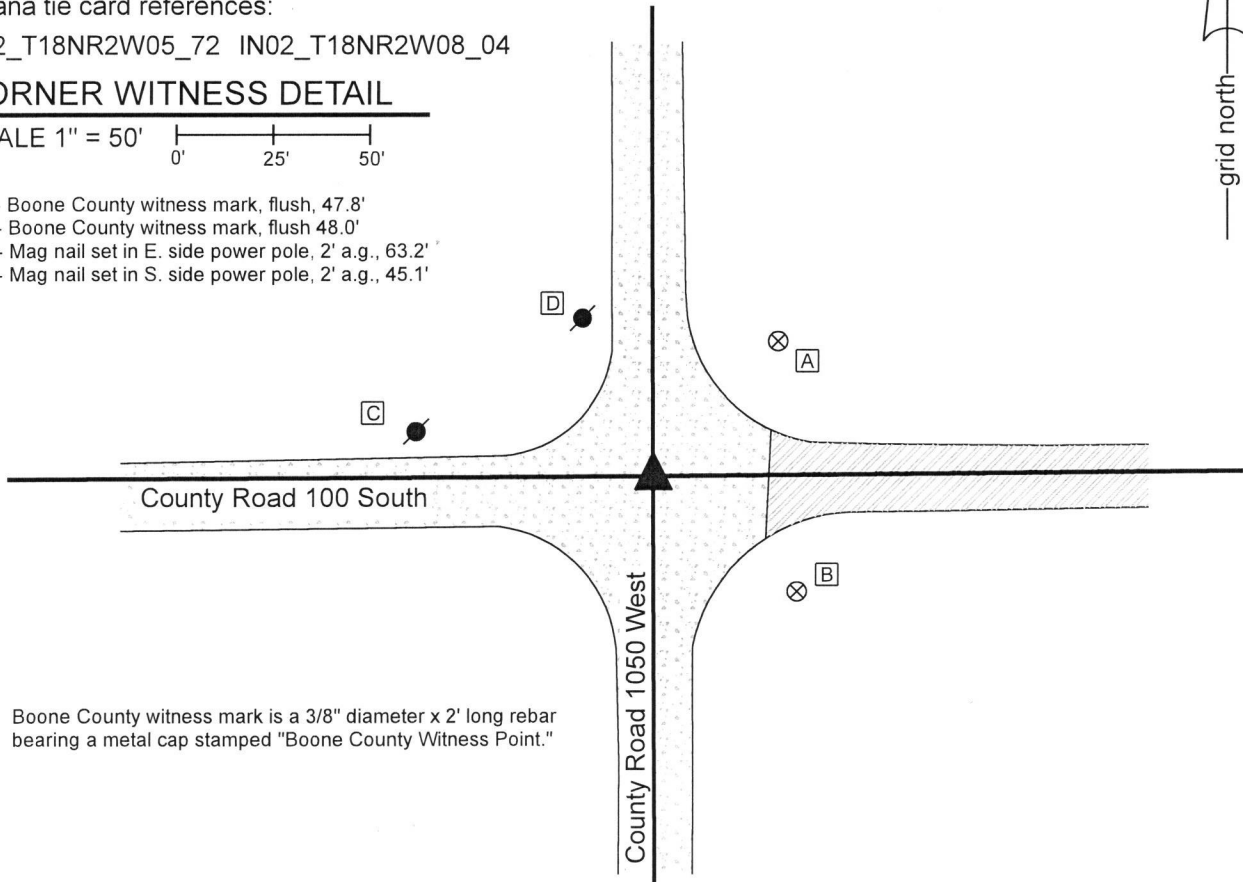
IN02\_T18NR2W05\_72 IN02\_T18NR2W08\_04

### CORNER WITNESS DETAIL

SCALE 1" = 50'



- A - Boone County witness mark, flush, 47.8'
- B - Boone County witness mark, flush 48.0'
- C - Mag nail set in E. side power pole, 2' a.g., 63.2'
- D - Mag nail set in S. side power pole, 2' a.g., 45.1'



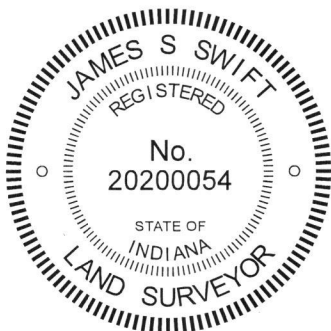
Boone County witness mark is a 3/8" diameter x 2' long rebar bearing a metal cap stamped "Boone County Witness Point."

The Harrison monument was set over a stone found.

A BCS record dated October 5-6, 1897 states, with respect to this corner, "Set Rock 8x12x18." No recent BCS tie cards were found referencing this corner.

Excavation was performed at this corner on July 31, 2019. Prior to excavation, an iron pin was found at 4 inches deep at the approximate center of the intersection of the two county roads. The pin was removed and found to be a square shafted spike 12 inches long. Excavation revealed a stone found at 10 inches deep, north and slightly west of the spike. The stone had a clearly etched "+" mark at the top, high point. It was vertical with the east and west sides being flat and vertical while the north and south sides sloped. At 9 inches below the top, the stone measured 8 inches E-W and 12 inches N-S. The south side of the stone was fully exposed and measured to be 16 inches tall. The stone may be taller, as only the south edge was fully exposed. The stone was accepted as being the same monument described in the 1897 record and was held as marking the corner. A Harrison monument was broken off at 4 inches tall, the top 9 inches of the stone were encased in concrete and the monument was set directly over the etched mark on the top of the stone. The square shafted spike had been 1.0 foot south and 0.3 foot east of the mark on the stone.

This corner was originally established as a wood post in 1820.



*Kenneth E. Hedge*  
Kenneth E. Hedge, County Surveyor

*James S. Swift*  
James S. Swift, IN LS 20200054  
August 28, 2018

Jefferson Township

Section 5  
T18N, R2W

Section 8  
T18N, R2W

# SECTION CORNER RECORD

## BOONE COUNTY SURVEYOR'S OFFICE

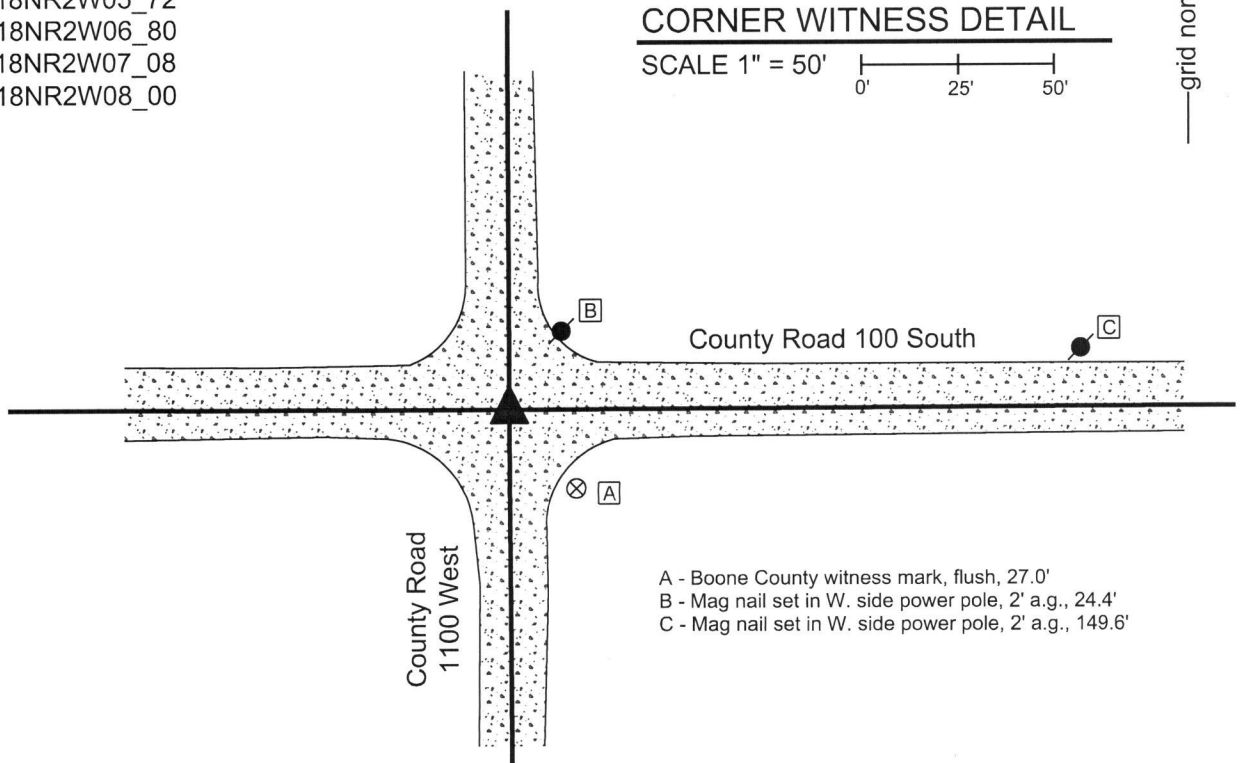
SW 100-1100

State Plane grid coordinates NAD83 (2011):  
 North: 1739969.79 East: 3066677.34 (U.S. survey feet)

Type of monument: Harrison, 4" disk 'Section Corner'  
 Depth: Six inches below adjacent gravel road surface.

Indiana tie card references:

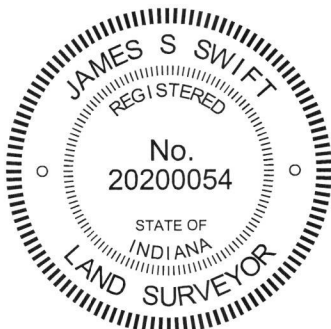
- IN02\_T18NR2W05\_72
- IN02\_T18NR2W06\_80
- IN02\_T18NR2W07\_08
- IN02\_T18NR2W08\_00



The Harrison monument was set over a stone found. No specific descriptions of this corner were found in the BCS Surveyor's Record, though the corner is mentioned as the terminal point for measurements in entries of 1835, 1897 and 1898, indicating that some monument was present from which to measure at those times. In particular, the 1897 and 1898 measurement references indicate the presence of a known monument at the corner. A BCS tie card dated May 19, 1994 shows the corner as a rebar with no reference to source or origin.

This corner was excavated on April 12, 2019. Prior to excavation, a 5/8 inch diameter rebar was found slightly below the surface of the road. The rebar was bent substantially, clearly disturbed in its position. A 1/2 inch diameter rebar was found slightly south of the 5/8 inch rebar. Excavation revealed a stone found at 11 inches deep, south and west of the rebars. The top 10 inches of the stone were exposed, as which point it measured 4 inches N-S by 8 inches E-W. With the top 10 inches exposed, the stone was entirely stable in the ground, indicating that it is yet substantially taller. The stone was oriented in cardinal directions and the south edge of the stone is flat and vertical. No specific marks were observed on the stone. It is fully embedded in the clay layer below the road, protruding 1 inch into the bottom of the road bed. The stone has a clear a distinct high point at the top, center. The stone was accepted as the best available evidence of the original position of the corner and the top, center high point was held as the specific position of the corner. The top 10 inches of the stone were encased in concrete and a Harrison monument, broken off at 4 inches, was set directly over the high point. The 5/8 inch rebar, removed during excavation, had been approximately 1 foot east and 2 feet north of the stone. This monument is most likely the same monument as is called in the 1994 tie card, though insufficient distance tie references were available to positively confirm this fact.

This corner was originally established as a wood post in 1820.



*Kenneth E. Hedge*  
 Kenneth E. Hedge, County Surveyor

*James S. Swift*  
 James S. Swift, IN LS 20200054  
 April 30, 2019

Jefferson Township

Section 6 T18N, R2W	Section 5 T18N, R2W
Section 7 T18N, R2W	Section 8 T18N, R2W