

SECTION CORNER RECORD

BOONE COUNTY SURVEYOR'S OFFICE

SE 600-100



State Plane grid coordinates NAD83 (CORS96):

Corner 1: North: 1713912.40 East: 3130062.41 (U.S. survey feet)
 Corner 2: North: 1713916.51 East: 3130233.30 (U.S. survey feet)

Type of monument: Harrison, 4" disk 'Section Corner'
 Depth: One inch below adjacent road surface

Indiana tie card references:
 IN02_T18NR1E31_80 IN02_T18NR1E32_72
 IN02_T17NR1E06_08 IN02_T17NR1E05_00

- ① S.E. Corner, Section 31
S.W. Corner, Section 32
T 18 N, R 1 E
- ② N.W. Corner, Section 5
N.E. Corner, Section 6
T 17 N, R 1 E

Distance between monuments = 170.94'
 Original federal closing distance = 259 links (170.94')

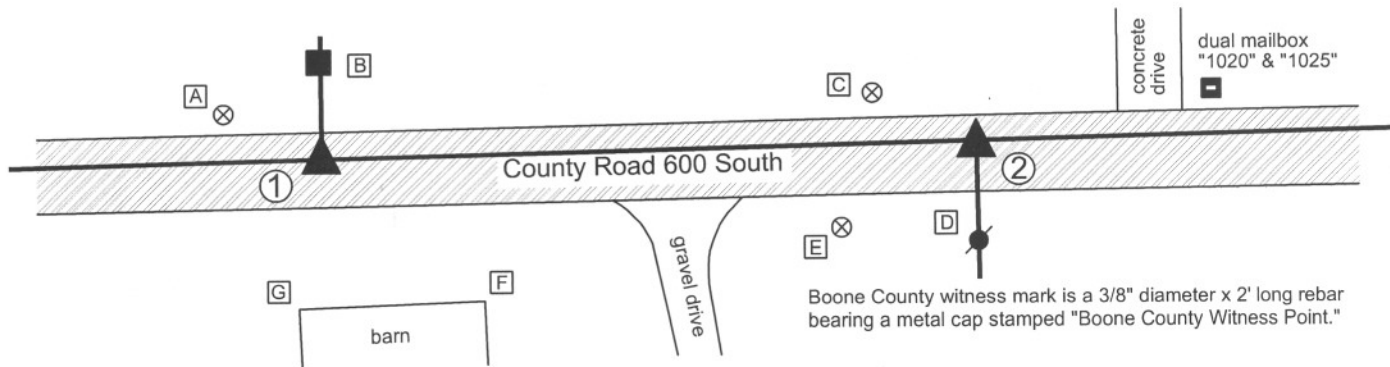
CORNER WITNESS DETAIL

SCALE 1" = 50'

- A - Boone County witness mark, flush,
28.36' to corner 1, 196.71' to corner 2
- B - Mag nail set in S. side, wood post, 2' a.g.,
22.62' to corner 1, 172.36' to corner 2

- C - Boone County witness mark, flush,
144.93' to corner 1, 29.80' to corner 2
- D - Mag nail set in N. side power pole, 1' a.g.,
172.23' to corner 2, 24.01' to corner 2

- E - Boone County Witness Point, flush,
137.02' to corner 1, 41.82' to corner 2
- F - N.E. corner barn (metal siding),
56.23 to corner 1, 135.37' to corner 2
- G - N.W. corner barn (metal siding),
39.77' to corner 1, 182.25'

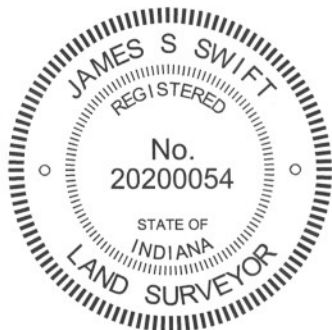


Boone County witness mark is a 3/8" diameter x 2' long rebar bearing a metal cap stamped "Boone County Witness Point."

The Harrison monument at corner 1 was set over a stone found. The Harrison monument at corner 2 was set along the township line as determined by corner 1 and the standard corner to the east, immediately north of a found stone and at the original federal closing distance of 259 links. A BCS record of March 7, 1870 states "Reestablished from stumps. Set Rock 12,8,6 + mark." No specific descriptions of corner 2 were found in the BCS Surveyor's Record beyond the original establishment of the corner at 259 links east of corner 1 on June 8, 1820.

A pair of BCS tie cards dated May 19, 1994 show the respective corners as railroad spikes but show no distance or cross ties between them. Corner 1 was excavated on July 2, 2012. Prior to excavation a railroad spike was found at 3 inches deep. Excavation revealed the stone described in the 1870 record at 21 inches deep, 3.3 feet north and 0.2 foot east of the railroad spike. The stone, as found, was leaning to the west and appeared to have been disturbed. The entire stone was exposed and stood up to what appeared to be the position it would have held prior to being disturbed. As stood up, the top of the stone protruded slightly into the bottom of the road bed and the stone measured 12 inches tall by 8 inches E-W by 6 inches N-S. Part of an etched chisel mark was visible on top, but the remainder of the mark appeared to have been broken, along with the western edge of the top of the stone. The stone was left in place, as stood up vertical, and the Harrison monument was set over the top, high point and remnants of the etched "+."

Corner 2 was excavated on July 11, 2012. Prior to excavation at this corner a railroad spike was found at 2 inches deep, 3 feet south of the township line defined by the stone at corner 1 and the stone at the standard corner to the east. Excavation revealed a stone found at 12 inches deep, approximately below the found railroad spike. The stone is embedded in the clay layer below the road, protruding 3 inches into the base of the road bed. With 4 inches of the stone exposed, it measured 5 inches E-W by 5 inches N-S. The stone was found to be 7 inches tall along the vertical east edge. The corner was established along the township line, 3 feet north of the stone, at the record closing distance of 259 links, which placed the corner immediately north of the stone. The stone was left in place. A Harrison monument was set at the position of the corner as established along the township line.



Kenneth E. Hedge
 Kenneth E. Hedge, County Surveyor

James S. Swift
 James S. Swift, IN LS 20200054
 January 15, 2013

| Harrison Twp | Perry Twp |
|-------------------------|-------------------------|
| Section 31 T18N, R1E | Section 32 T18N, R1E |
| Section 6 T17N, R1E | Section 5 T17N, R1E |

PHOTOGRAPHIC DOCUMENTATION

Date of photography: July 2 & July 11, 2012

The stone witnessing the closing corner (corner 2). View from above and east.
Note: this stone was not held as the corner.



Close-up of the stone witnessing corner 2.



The stone at the standard corner (corner 1) and the post on the north side of Cnty Rd 600 South.



The stone at corner 1 as found, apparently leaning towards the west.



The stone at corner 1 stood up in the orientation at which it was likely originally set.



For details and documentation, refer to related sheet "Section Corner Record."

SECTION CORNER RECORD

BOONE COUNTY SURVEYOR'S OFFICE

SE 600-150

State Plane grid coordinates NAD83 (CORS96):

Corner 1: North: 1713976.26 East: 3132734.44 (U.S. survey feet)

Corner 2: North: 1713979.83 East: 3132884.91 (U.S. survey feet)

Type of monument: Harrison, 4" disk 'Section Corner'

Depth: One inch below adjacent road surface

Indiana tie card references:

IN02_T18NR1E32_76

IN02_T17NR1E05_04

① S. 1/4 Corner, Section 32
T 18 N, R 1 E

② N. 1/4 Corner, Section 5
T 17 N, R 1 E

Distance between monuments:
150.5' (228 links per 1868 record)

CORNER WITNESS DETAIL

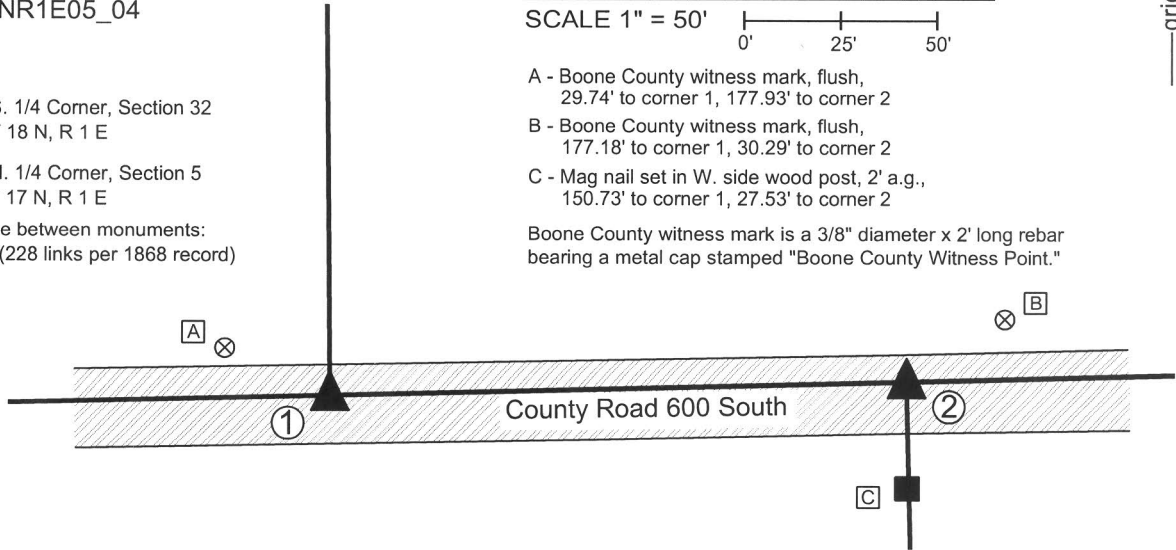
SCALE 1" = 50'

A - Boone County witness mark, flush,
29.74' to corner 1, 177.93' to corner 2

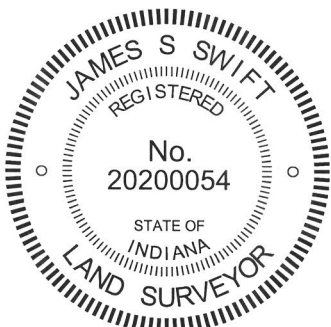
B - Boone County witness mark, flush,
177.18' to corner 1, 30.29' to corner 2

C - Mag nail set in W. side wood post, 2' a.g.,
150.73' to corner 1, 27.53' to corner 2

Boone County witness mark is a 3/8" diameter x 2' long rebar
bearing a metal cap stamped "Boone County Witness Point."



The harrison monument at corner 1 was set over a stone found. The harrison monument at corner 2 was set at a calculated position. A BCS record of August 19-20, 1867 states, with respect to corner 1, "Reestablished set Rock 16,15,15." A BCS record of March 5-6, 1868 states, with respect to corner 2, "established 228 links East of qtr sect cor for Sect 32. Rock marked +." No recent BCS tie cards were found for these corners. Excavation was performed at this corner on July 3, 2012. Prior to excavation, a railroad spike was found in the vicinity of corner 1. No monumentation was found near corner 2, though a wood post on the south side of the road provided substantial evidence of the general location of corner 2. Excavation was performed at corner 2 first, due to the presence of good evidence. Excavation of an area extending 2.5 feet in all cardinal directions from the point in the center of County Road 600 south which is immediately north of the aforementioned post on the south side of the road revealed no further evidence. The bottom of the road bed was found at 15 inches deep. Excavation was performed to approximately 20 inches deep. Excavation at corner 1 did reveal a stone found. The stone is at 13 inches deep, embedded in the clay layer below the road and protruding approximately 2 inches into the bottom of the road bed. With the top 8 inches of the stone exposed, it measured 15 inches E-W by 5 inches N-S. The stone was clearly vertical but was oriented slightly SE-NW. No specific marks were found on the stone, nor were any called for in the 1867 record. The stone is 15x5 inches rather than 15x15 as recorded in the BCS Surveyor's Record. It is believed that this is the stone described in that record and that the second "15" was written in error. The position of the stone fits well with distances shown in the 1867 record, relative to the location of the corners to the east and west. A harrison monument was set of the top, center of the stone. The railroad spike, removed during excavation, had been 1.5 feet west of this point. Additional excavation was performed at corner 1 on June 11, 2013, in search of the "rock marked +" called for in the 1868 record. An area extending 2 feet further than the original area of excavation was exposed to the clay layer below the road. No further evidence of corner 2 was found. The combined area of excavation at corner 2 encompassed the area in which it might reasonably be expected to find the stone, given the data shown on the 1868 record. Corner 2 was established on the township line, as determined by corner 1 and the standard corner 1/2 mile east at a point 228 links (150.48 feet) east of Corner 1. A harrison monument was set at this position on June 11, 2013. Corner 1 was originally established in 1819. Corner 2 was not monumented by the original federal surveyors.



Kenneth E. Hedge
Kenneth E. Hedge, County Surveyor

James S. Swift
James S. Swift, IN LS 20200054
February 5, 2015

Perry Twp

Section 32
T18N, R1E

Section 5
T17N, R1E

PHOTOGRAPHIC DOCUMENTATION

Date of photography: July 5, 2012

The stone at the stanard corner as first exposed.



The area of excavation at the closing corner.



The stone at the stanard corner more fully exposed. View from above and west.



View from the east, looking across the stone and west along County Road 600 South.



The stone at the stanard corner. View from above and south.



For details and documentation, refer to related sheet "Section Corner Record."

SECTION CORNER RECORD

SE 600-200

BOONE COUNTY SURVEYOR'S OFFICE

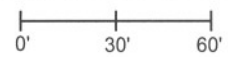
State Plane grid coordinates NAD83 (NSRS 2007):

Corner 1: North: 1714039.90 East: 3135409.57 (U.S. survey feet)

Corner 2: North: 1714043.09 East: 3135538.23 (U.S. survey feet)

CORNER WITNESS DETAIL

SCALE 1" = 60'



Corner 1:

Type of monument: Harrison, 4" disk 'Section Corner'

Depth: One inch below adjacent road surface

Corner 2:

Type of monument: 5/8 inch rebar with metal cap stamped "Boone County Surveyor"

Depth: Flush with adjacent ground.

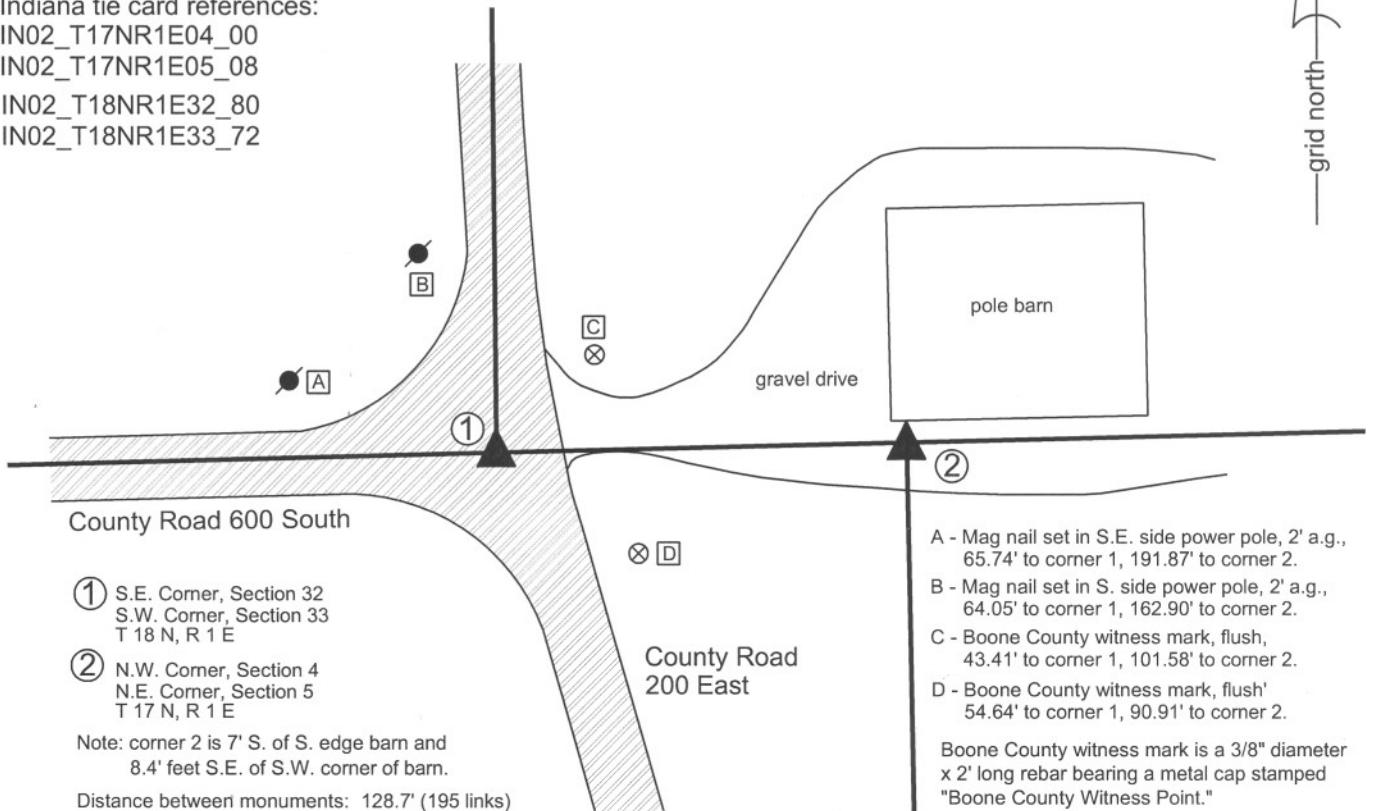
Indiana tie card references:

IN02_T17NR1E04_00

IN02_T17NR1E05_08

IN02_T18NR1E32_80

IN02_T18NR1E33_72



County Road 600 South

① S.E. Corner, Section 32
S.W. Corner, Section 33
T 18 N, R 1 E

② N.W. Corner, Section 4
N.E. Corner, Section 5
T 17 N, R 1 E

Note: corner 2 is 7' S. of S. edge barn and
8.4' feet S.E. of S.W. corner of barn.

Distance between monuments: 128.7' (195 links)

County Road
200 East

A - Mag nail set in S.E. side power pole, 2' a.g.,
65.74' to corner 1, 191.87' to corner 2.

B - Mag nail set in S. side power pole, 2' a.g.,
64.05' to corner 1, 162.90' to corner 2.

C - Boone County witness mark, flush,
43.41' to corner 1, 101.58' to corner 2.

D - Boone County witness mark, flush'
54.64' to corner 1, 90.91' to corner 2.

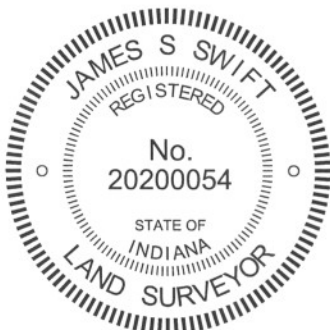
Boone County witness mark is a 3/8" diameter
x 2' long rebar bearing a metal cap stamped
"Boone County Witness Point."

The harrison monument at corner was set in place of a railroad rail found. The capped rebar at corner 2 was set in a calculated position.

A BCS record of August 19, 1867 for corner 1 states "Reestablished from one tree. Set a Rock 16,14,8." A BCS tied card for the same corner, dated July 10, 1968 states "Stone found." No specific references were found for corner 2 beyond the original establishment of the corner in 1820.

Excavation at corner 1 yielded a railroad rail found at 9 inches below grade. No other evidence was found. Though the tie card merely states "stone found," it is known that the standard procedure of BCS field crews from that era was to remove a stone, if found, and replace it with a 30 inch length of railroad rail set on end. It is believed that the found rail is in the same position as the stone found in 1968. The rail was accepted as the best evidence of corner 1. The rail was removed and a harrison monument was set in its place. No specific evidence was found in the immediate vicinity of corner 2. This corner falls adjacent to a large pole barn and significant excavation was not performed. Corner 2 was established on the range line at the record government closing distance of 195 links (128.7 feet) east of corner 1. This position fits well with the extended roadway to the south. A 5/8 inch diameter rebar, 3 feet long, with an aluminum cap stamped 'Boone County Surveyor' was set at corner 2.

Corner 1 was originally established as a wood post in 1819. Corner 2 was originally established as a wood post in 1821.



Kenneth E. Hedge
Kenneth E. Hedge, County Surveyor

James S. Swift
James S. Swift, IN LS 20200054
July 25, 2011

Worth Township

| | |
|-------------------------|-------------------------|
| Section 32 T18N, R1E | Section 33 T18N, R1E |
| Section 5 T17N, R1E | Section 4 T17N, R1E |

SECTION CORNER RECORD

SE 650-100

BOONE COUNTY SURVEYOR'S OFFICE

State Plane grid coordinates NAD83 (2011):

North: 1711370.95 East: 3130274.28 (U.S. survey feet)

Type of monument: Harrison, 4" disk 'Section Corner'

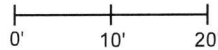
Depth: Two inches above surrounding ground

Indiana tie card references:

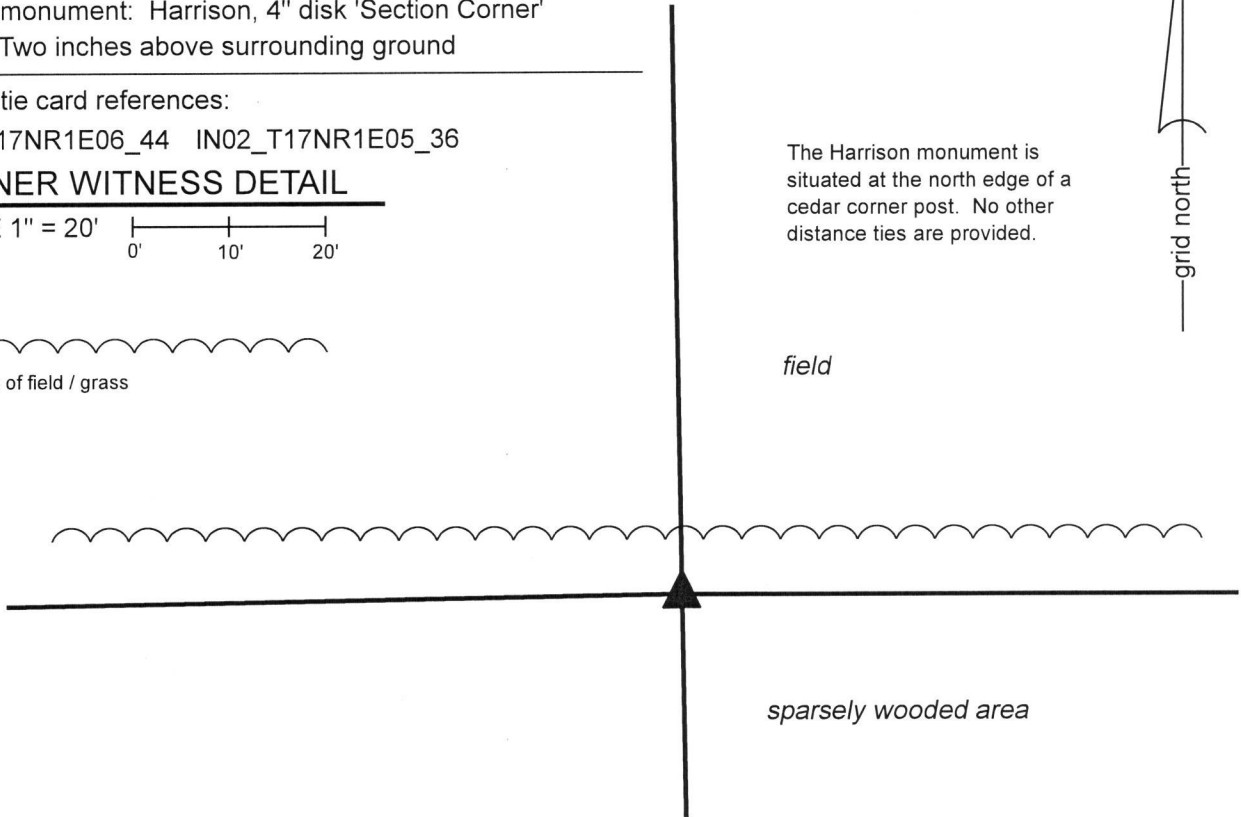
IN02_T17NR1E06_44 IN02_T17NR1E05_36

CORNER WITNESS DETAIL

SCALE 1" = 20'



- edge of field / grass



The Harrison monument is situated at the north edge of a cedar corner post. No other distance ties are provided.

field

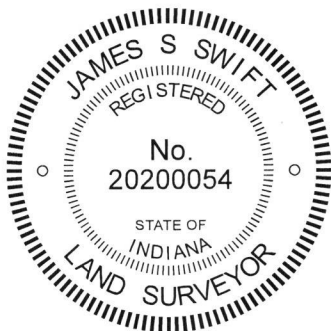
sparsely wooded area

The Harrison monument was set over a stone found.

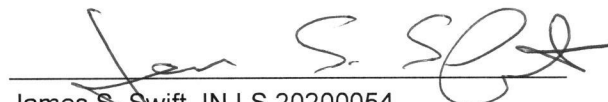
A BCS record dated March 5-6, 1868 states, with respect to this corner, "Reestablished from trees. Set Rock 11,17,13 marked +." A BCS tie card dated May 19, 1994 shows the corner as a metal fence post, 2 feet north and 1.5 feet east of a corner post, but also shows the corner as being in-line with County Road 600 South, which is not possible.

Excavation was performed at this corner on November 5, 2019. Prior to excavation, a wood corner post was observed at the north edge of a sparsely wooded area, in-line with a grass lane and field divisions to the west, approximately 2.5 feet southwest of a computed position for the corner, based on single proportion calculations based on the relative positions of the section corners to the north and south (see BCS Corner SE 600-100 and SE 700-100) and the dimensions reported in the original federal notes for the township. The metal post shown on the 1994 tie card was not found. The wood corner post appears to be ancient but no longer has fencing attached. A brace notch was observed on the south edge of the post. No rebars or other artificial monuments were found adjoining the post. A stone was found near the north edge of the post at 15 inches deep. The stone has a distinct east-west ridge across the top with the high point of the ridge at the center of the stone. The top five inches of the stone were exposed at which point it was found to measure 9 inches north-south by 10 inches east-west. The total height of the stone was not measured but estimated to be approximately 9 inches. This stone is not the same monument described in the 1868 record but does have the characteristics of a stone purposely set to mark the corner. It is vertical, oriented in cardinal directions with a distinct high point. It is close to but clearly not bracing the post. No other stones were found in the immediate vicinity of the post. It is noted that if the record stone called in the 1868 record had been above this stone, it would have protruded out of the ground by 2 inches. The stone was found to be within two feet of the aforementioned computed position for the corner based on proximate corners. The stone was accepted as representing the best available evidence of the corner and was held as marking the corner. The stone was left in place, the top 5 inches were encased in concrete and a Harrison monument was set directly over the top high point and center of the ridge on the top of the stone.

This corner was originally established in 1820.




 Kenneth E. Hedge, County Surveyor


 James S. Swift, IN LS 20200054
 Decemer 3, 2019

Harrison Township Perry Township

| | |
|------------------------|------------------------|
| Section 6 T17N, R1E | Section 5 T17N, R1E |
|------------------------|------------------------|

SECTION CORNER RECORD

SE 650-200

BOONE COUNTY SURVEYOR'S OFFICE

State Plane grid coordinates NAD83 (NSRS 2007):

North: 1711444.77 East: 3135586.76 (U.S. survey feet)

Type of monument: Harrison, 4" disk 'Section Corner'

Depth: One inch below adjacent road surface

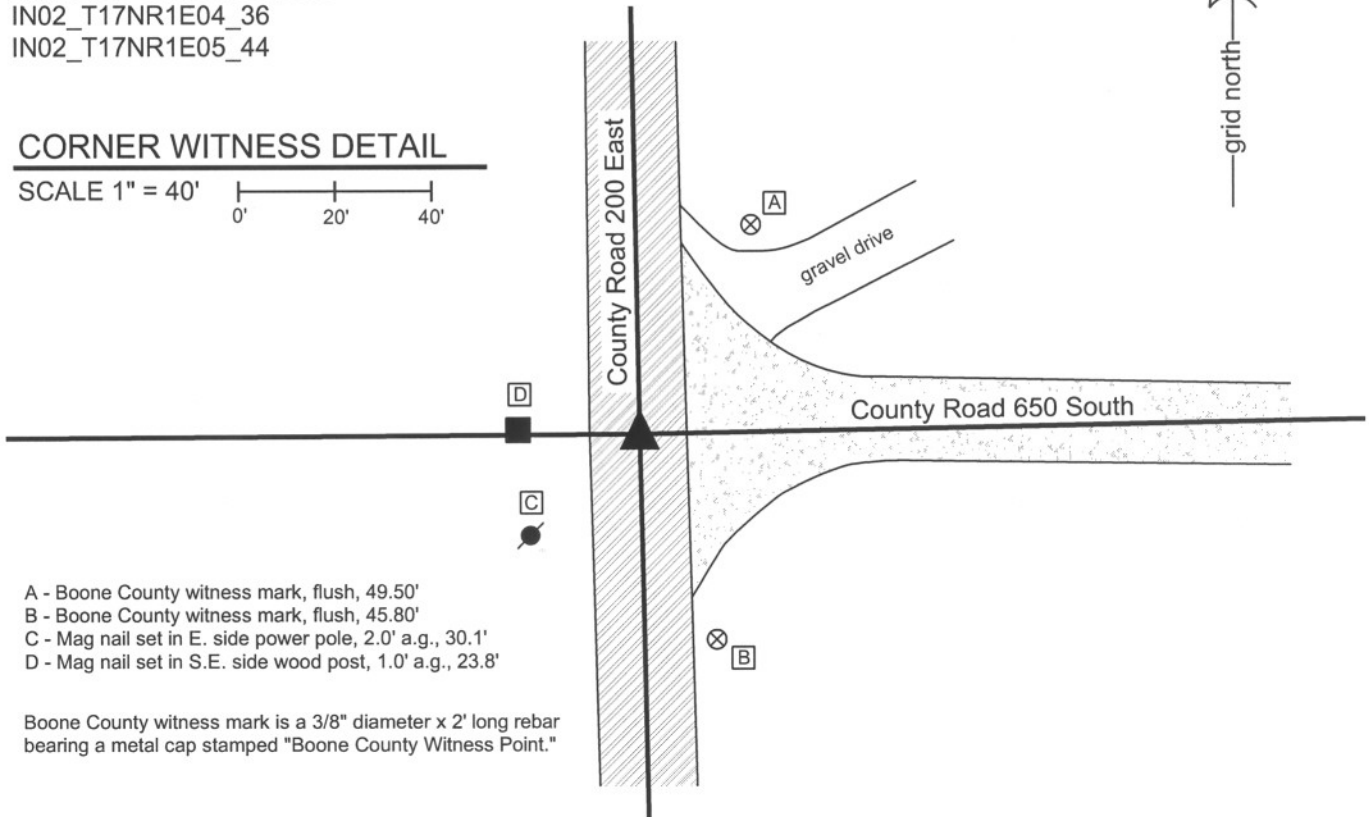
Indiana tie card references:

IN02_T17NR1E04_36

IN02_T17NR1E05_44

CORNER WITNESS DETAIL

SCALE 1" = 40'



- A - Boone County witness mark, flush, 49.50'
- B - Boone County witness mark, flush, 45.80'
- C - Mag nail set in E. side power pole, 2.0' a.g., 30.1'
- D - Mag nail set in S.E. side wood post, 1.0' a.g., 23.8'

Boone County witness mark is a 3/8" diameter x 2' long rebar bearing a metal cap stamped "Boone County Witness Point."

The harrison monument was set over a stone found.

This corner is not specifically described in the BCS Surveyor's Record. It is mentioned as the terminal point for a measurement in 1867. A BCS tie card dated July 10, 1968 states "no stone." A BCS reference sheet dated September 30, 1989 notes the presence of a railroad rail but specifically does not confirm it as monumenting the corner. This corner was excavated on December 4, 2009. Prior to excavation a nail was found at the surface. Excavation revealed a 5/8 inch rebar with a plastic cap stamped "Witness Point" at 6 inches deep and a railroad rail on end at 10 inches deep. The rebar was on the west edge of the rail and both were slightly north and east of the nail. Further excavation revealed a stone found at 12 inches deep, 1.0 foot south of the nail and 1.1 foot south of the rail and nail. The stone measures 4 inches E-W by 8 inches N-S and is embedded in the clay layer below the base of the road, with approximately 2 inches protruding from the clay into the base of the road. The stone was temporarily removed and the height was measured to be 13 inches. The stone is flat on the west edge and pointed towards the bottom. The stone clearly shows the characteristics of having been set purposely as an intentional monument. The stone was placed back in its original position and the harrison monument was set directly over the stone. The top 6 inches of the stone were encased in concrete. The nail, rebar and rail were removed during excavation. The 1968 tie card does not mention the rail, but it is likely that this monument was set at that time. The stone is clearly the older evidence of the corner and the tie card is erroneous in the statement "no stone."

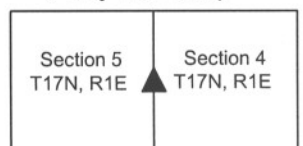
This corner was originally established as a wood post in June, 1820.



Kenneth E. Hedge
Kenneth E. Hedge, County Surveyor

James S. Swift
James S. Swift, IN LS 20200054
July 14, 2010

Perry Township



PHOTOGRAPHIC DOCUMENTATION
Date of photography: December 4, 2009

View of the stone from above and west.



The stone temporarily removed from the road bed, showing its shape with a pointed bottom.



View from the north, looking across the stone and south along County Road 200 East.



View from the west, looking across the stone and east along County Road 650 South.



For details and documentation, refer to related sheet "Section Corner Record."

SECTION CORNER RECORD

SE 700-100

BOONE COUNTY SURVEYOR'S OFFICE

State Plane grid coordinates NAD83 (COR96):
North: 1708706.83 East: 3130321.02 (U.S. survey feet)

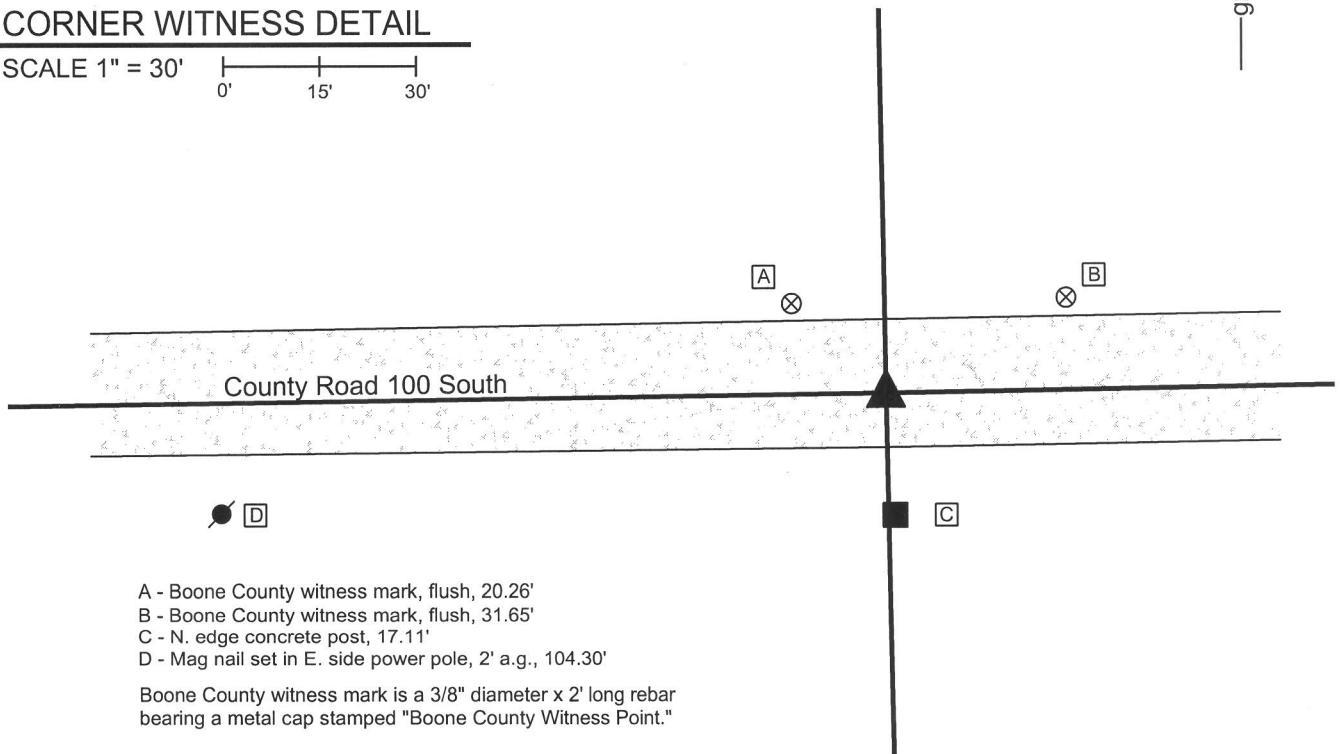
Type of monument: Harrison, 4" disk 'Section Corner'
Depth: six inches below adjacent gravel road surface

Indiana tie card references:
IN02_T17NR1E06_80 IN02_T17NR1E05_72
IN02_T17NR1E07_08 IN02_T17NR1E08_00



CORNER WITNESS DETAIL

SCALE 1" = 30'



- A - Boone County witness mark, flush, 20.26'
- B - Boone County witness mark, flush, 31.65'
- C - N. edge concrete post, 17.11'
- D - Mag nail set in E. side power pole, 2' a.g., 104.30'

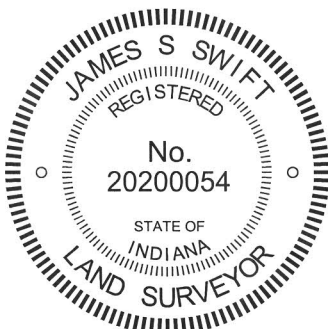
Boone County witness mark is a 3/8" diameter x 2' long rebar bearing a metal cap stamped "Boone County Witness Point."

The harrison monument was set over a stone found.

A BCS record of July 2, 1895 states "Set Rock 12x9x9 marked +." A BCS tie card dated March 9, 1967 states "no stone."

This corner was excavated on February 23, 2011. Prior to excavation a railroad spike was found at the surface. Excavation revealed a stone found at 14 inches deep. With 8 inches of the top of the stone exposed, it measured 9 inches E-W by 7 inches N-S. The stone measured approximately 12 inches tall on the north side. A distinct etched + mark was found on the east edge of the top of the stone. The stone was embedded in the clay layer below the road, protruding 2 inches into the bottom of the road bed. The stone was accepted as being the stone described in the 1895 record and held as marking the corner. The was left in place. The top of the stone was encased in concrete and a harrison monument was set over the top, center of the stone. This position is even with the west edge of the concrete post on the south side of the road. The railroad spike, removed during excavation, had been 1.2 feet north and 2.4 feet east of the stone.

This corner was originally established as a wood post in June, 1820.



Kenneth E. Hedge, County Surveyor

James S. Swift, IN LS 20200054
March 1, 2012

Harrison Township Perry Township

| | |
|------------------------|------------------------|
| Section 6 T17N, R1E | Section 5 T17N, R1E |
| Section 7 T17N, R1E | Section 8 T17N, R1E |

PHOTOGRAPHIC DOCUMENTATION

Date of photography: February 23, 2011

View of the stone as first exposed.
View from above and west.



View of the stone as first exposed.
View from above and north.



View from the north, showing the stone and the concrete post on the south side of the road.



Close-up of the stone, showing the etched mark on the east side of the top of the stone.



View of the stone from above, prior to being encased in concrete as part of the setting of the harrison monument above the stone.



For details and documentation, refer to related sheet "Section Corner Record."

SECTION CORNER RECORD

SE 700-150

BOONE COUNTY SURVEYOR'S OFFICE

State Plane grid coordinates NAD83 (CORS96):

North: 1708750.22 East: 3132999.66 (U.S. survey feet)

Type of monument: Harrison, 4" disk 'Section Corner'

Depth: six inches below adjacent gravel road surface

Indiana tie card references:

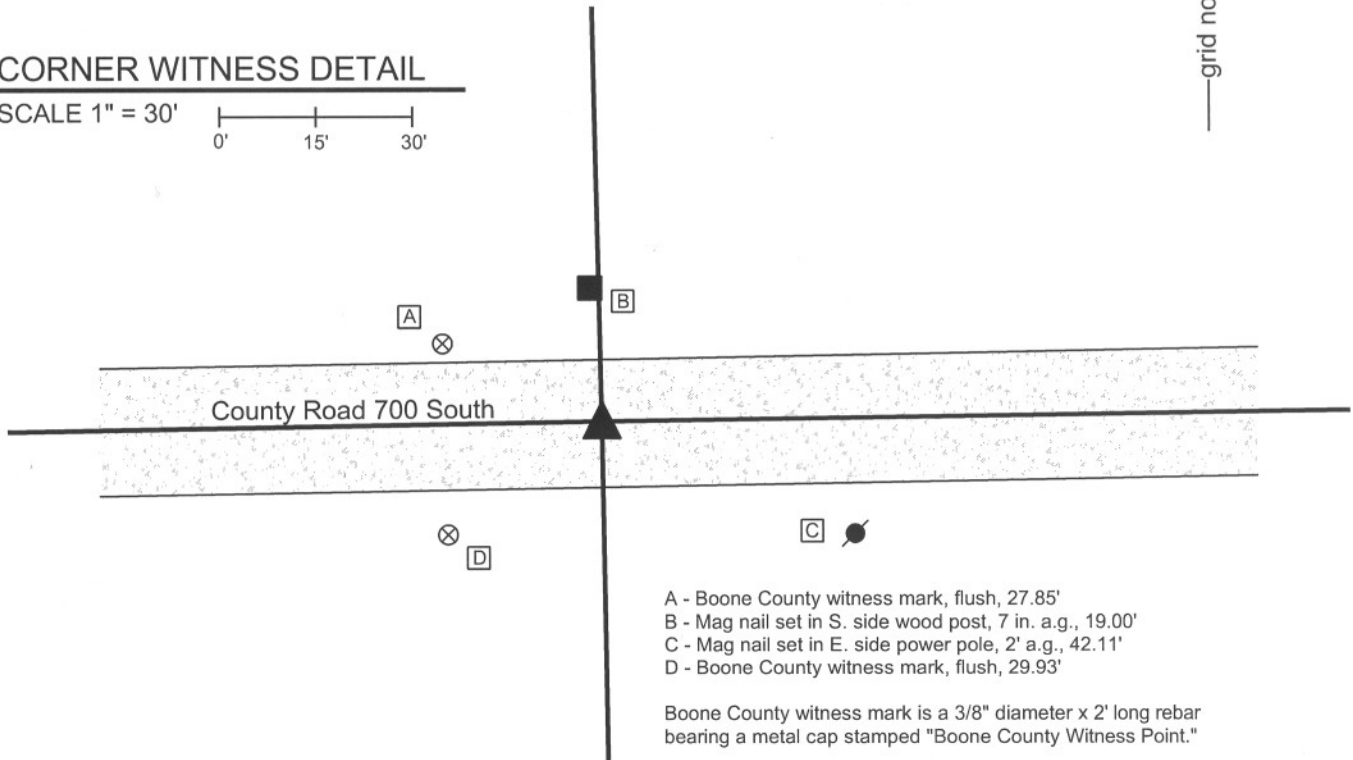
IN02_T17NR1E05_76

IN02_T17NR1E08_04



CORNER WITNESS DETAIL

SCALE 1" = 30'



- A - Boone County witness mark, flush, 27.85'
- B - Mag nail set in S. side wood post, 7 in. a.g., 19.00'
- C - Mag nail set in E. side power pole, 2' a.g., 42.11'
- D - Boone County witness mark, flush, 29.93'

Boone County witness mark is a 3/8" diameter x 2' long rebar bearing a metal cap stamped "Boone County Witness Point."

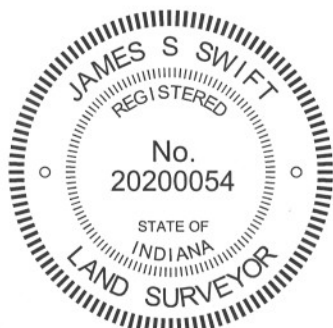
The harrison monument was set in place of a stone found.

A BCS record of March 5-6, 1868 states "Reestablished. Set Rock marked +." A BCS tie card dated December 9, 1994 shows the corner as a rebar with no documentation of source.

This corner was excavated on April 5, 2011. Prior to excavation a rebar was found at the surface. Excavation revealed a stone found at 18 inches deep. The stone was embedded in the clay layer below the road, protruding approximately 1 inch into to the bottom of the road bed. The stone measured 6 inches N-S by 6 inches E-W by 7 inches tall. The stone had a flat bottom, was oriented in cardinal directions and the north side was flat and vertical. The stone is of a rough surfaced granite material. A vague etched + was detected on the north edge, though the mark could not be positively confirmed as a human made mark, due to the rough qualities of the surface of the stone. The 1868 record does not described the dimenstions of the stone. The characteristics of the stone fit those of other corner stones found and it clearly appeared to have been purposely set. The stone was held as marking the corner. The stone was removed and a harrison monument was set in place of the top, center of the stone. The rebar, removed during excavation, had been 1.3 feet south and 1.4 feet west of the top, center of the stone.

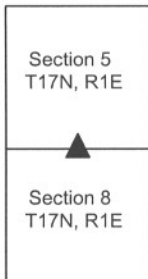
This corner was originally established as a wood post in June, 1820.

Perry Twp



Kenneth E. Hedge
Kenneth E. Hedge, County Surveyor

James S. Swift
James S. Swift, IN LS 20200054
March 1, 2012



PHOTOGRAPHIC DOCUMENTATION

Date of photography: April 5, 2011

View of the stone from above and north.



View of the stone from above and east.



For details and documentation, refer to related sheet "Section Corner Record."

SECTION CORNER RECORD

SE 700-200

BOONE COUNTY SURVEYOR'S OFFICE

State Plane grid coordinates NAD83 (NSRS 2007):

North: 1708787.78 East: 3135641.52 (U.S. survey feet)

Type of monument: Harrison, 4" disk 'Section Corner'

Depth: One inch below adjacent road surface

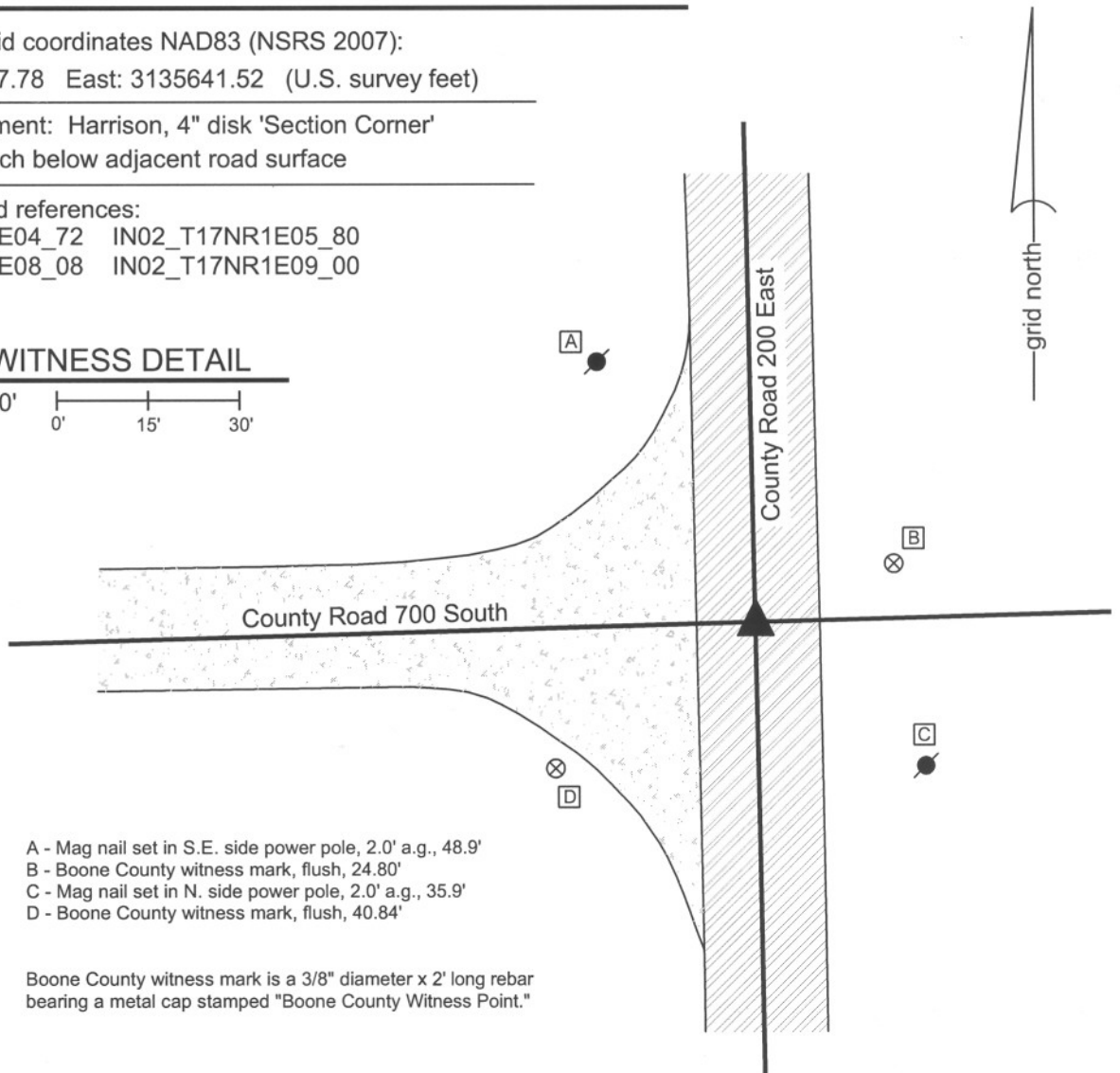
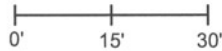
Indiana tie card references:

IN02_T17NR1E04_72 IN02_T17NR1E05_80

IN02_T17NR1E08_08 IN02_T17NR1E09_00

CORNER WITNESS DETAIL

SCALE 1" = 30'

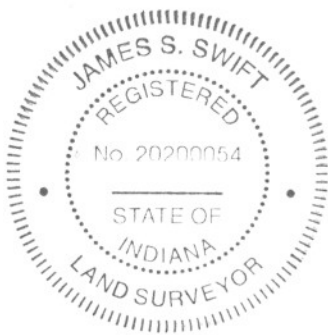


- A - Mag nail set in S.E. side power pole, 2.0' a.g., 48.9'
- B - Boone County witness mark, flush, 24.80'
- C - Mag nail set in N. side power pole, 2.0' a.g., 35.9'
- D - Boone County witness mark, flush, 40.84'

Boone County witness mark is a 3/8" diameter x 2' long rebar bearing a metal cap stamped "Boone County Witness Point."

The harrison monument was set in place of a railroad spike found.

A BCS record of March 5 & 6, 1868 states "Reestablished from stump of one tree. Rock marked +." A BCS tie card dated July 10, 1968 states "found stone." This corner was excavated by a private survey company in April, 2007, witnessed by the undersigned Land Surveyor. At that time, a railroad rail was found on end with a rebar adjacent to it. No stones were found. Both the rebar and the rail were removed and a railroad spike was set in place of the rail. Although the 1968 tie card simply states "found stone" it is known that it was common practice of BCS field crews from that era to remove a corner stone when found and replace it with a railroad rail on end. Hence, it is accepted that the position of the rail is the same as the position of the stone and it is known that the railroad spike replaced the rail. The railroad spike was removed on May 8, 2009 and replaced with a harrison monument. This corner was originally established as a wood post in June, 1820.



Kenneth E. Hedge
 Kenneth E. Hedge, County Surveyor

James S. Swift

James S. Swift, IN LS 20200054

July 14, 2010

Perry Township

| | |
|------------------------|------------------------|
| Section 5 T17N, R1E | Section 4 T17N, R1E |
| Section 8 T17N, R1E | Section 9 T17N, R1E |