

SECTION CORNER RECORD

SE 000-800

BOONE COUNTY SURVEYOR'S OFFICE

State Plane grid coordinates NAD83 (2011):

Corner 1: North: 1746351.46 East: 3167236.35 (U.S. survey feet)

Corner 2: North: 1746346.86 East: 3167073.48 (U.S. survey feet)

Type and depth of monument:

Corner 1: Harrison, 4" disk 'Section Corner', 1/2 inch below adjacent road

Corner 2: Railroad spike, flush with adjacent road.

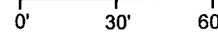
Indiana tie card references:

IN02_T19NR2E32_80 IN02_T19NR2E33_72

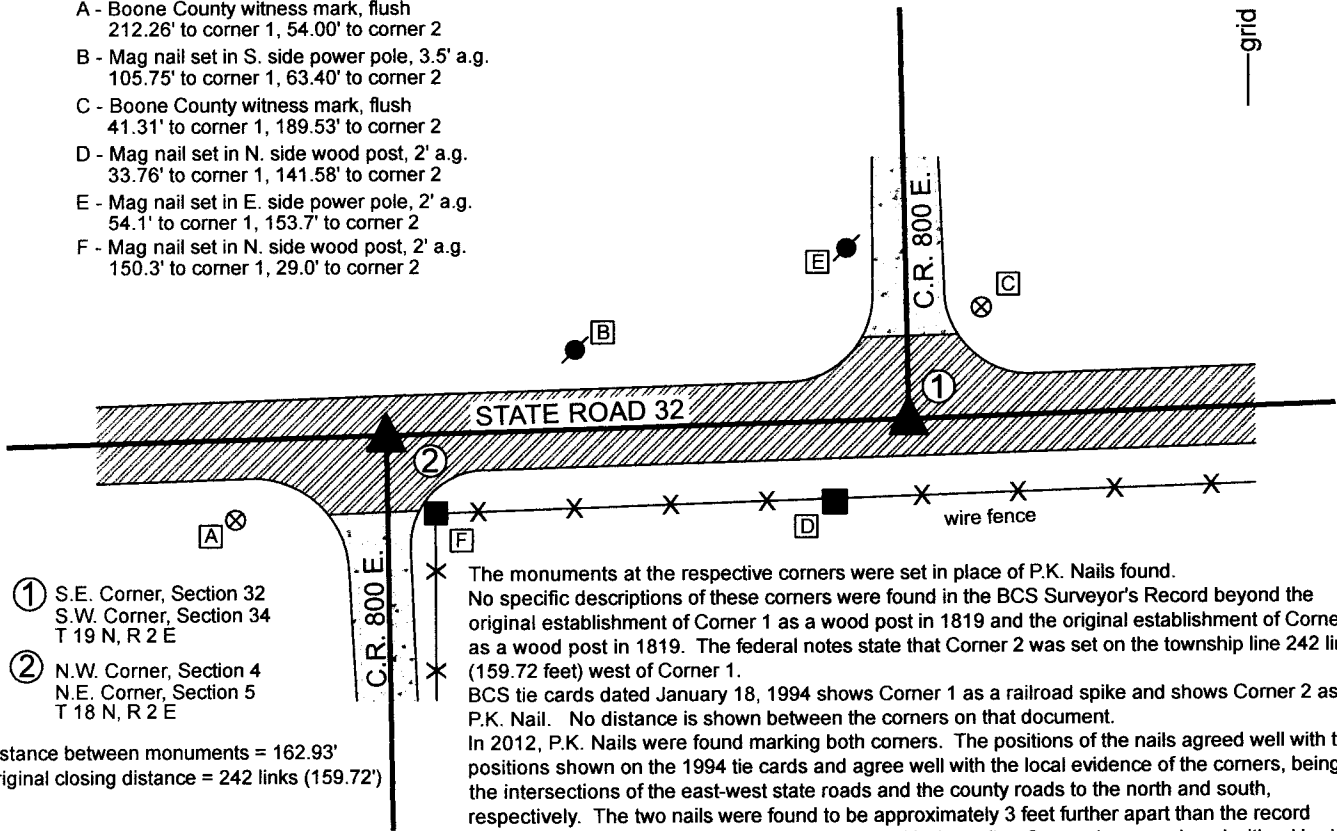
IN02_T18NR2E05_08 IN02_T18NR2E04_00

CORNER WITNESS DETAIL

SCALE 1" = 60'



- A - Boone County witness mark, flush
212.26' to corner 1, 54.00' to corner 2
- B - Mag nail set in S. side power pole, 3.5' a.g.
105.75' to corner 1, 63.40' to corner 2
- C - Boone County witness mark, flush
41.31' to corner 1, 189.53' to corner 2
- D - Mag nail set in N. side wood post, 2' a.g.
33.76' to corner 1, 141.58' to corner 2
- E - Mag nail set in E. side power pole, 2' a.g.
54.1' to corner 1, 153.7' to corner 2
- F - Mag nail set in N. side wood post, 2' a.g.
150.3' to corner 1, 29.0' to corner 2



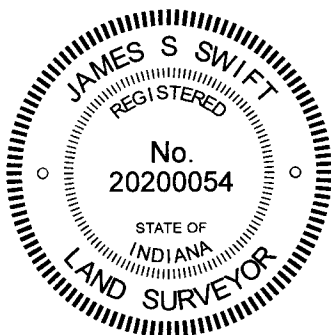
- ① S.E. Corner, Section 32
S.W. Corner, Section 34
T 19 N, R 2 E
- ② N.W. Corner, Section 4
N.E. Corner, Section 5
T 18 N, R 2 E

Distance between monuments = 162.93'
Original closing distance = 242 links (159.72')

The monuments at the respective corners were set in place of P.K. Nails found. No specific descriptions of these corners were found in the BCS Surveyor's Record beyond the original establishment of Corner 1 as a wood post in 1819 and the original establishment of Corner 2 as a wood post in 1819. The federal notes state that Corner 2 was set on the township line 242 links (159.72 feet) west of Corner 1. BCS tie cards dated January 18, 1994 shows Corner 1 as a railroad spike and shows Corner 2 as a P.K. Nail. No distance is shown between the corners on that document. In 2012, P.K. Nails were found marking both corners. The positions of the nails agreed well with the positions shown on the 1994 tie cards and agree well with the local evidence of the corners, being at the intersections of the east-west state roads and the county roads to the north and south, respectively. The two nails were found to be approximately 3 feet further apart than the record closing distance of 242 links. On October 3, 2013, the nail at Corner 1 was replaced with a Harrison monument set in the same position. On the same date, a railroad spike was set at Corner 2. The position of Corner 2 was established on the township line as defined by Corner 1 and the standard corner to the west (See BCS Corner NE 000-750). This position fell approximately 0.1 foot north of the found nail.

No substantial excavation was performed in search of corner stones or other evidence, as these corners fall in a state road. Minor excavation was performed at Corner 1 in order to set the Harrison monument in concrete.

The corners shown hereon were both set on October 3, 2013, but no documentation was produced at that time.



Kenneth E. Hedge
Kenneth E. Hedge, County Surveyor

James S. Swift

James S. Swift, IN LS 20200054 January 19, 2022

Union Township

Section 32 T19N, R2E	Section 33 T19N, R2E
Section 5 T18N, R2E	Section 4 T18N, R2E

SECTION CORNER RECORD

SE 000-850

BOONE COUNTY SURVEYOR'S OFFICE

State Plane grid coordinates NAD83 (2011)

Corner 1: North: 1746444.22 East: 3169894.11 (U.S. survey feet)

Corner 2: North: 1746438.67 East: 3169735.14 (U.S. survey feet)

Type of monument: Corner 1: Iron pin (rebar) in concrete, Corner 2: Mag Nail

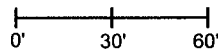
Depth: flush with adjacent road surface

Indiana tie card references:

IN02_T18NR2E04_04 IN02_T19NR2E33_76

CORNER WITNESS DETAIL

SCALE 1" = 60'

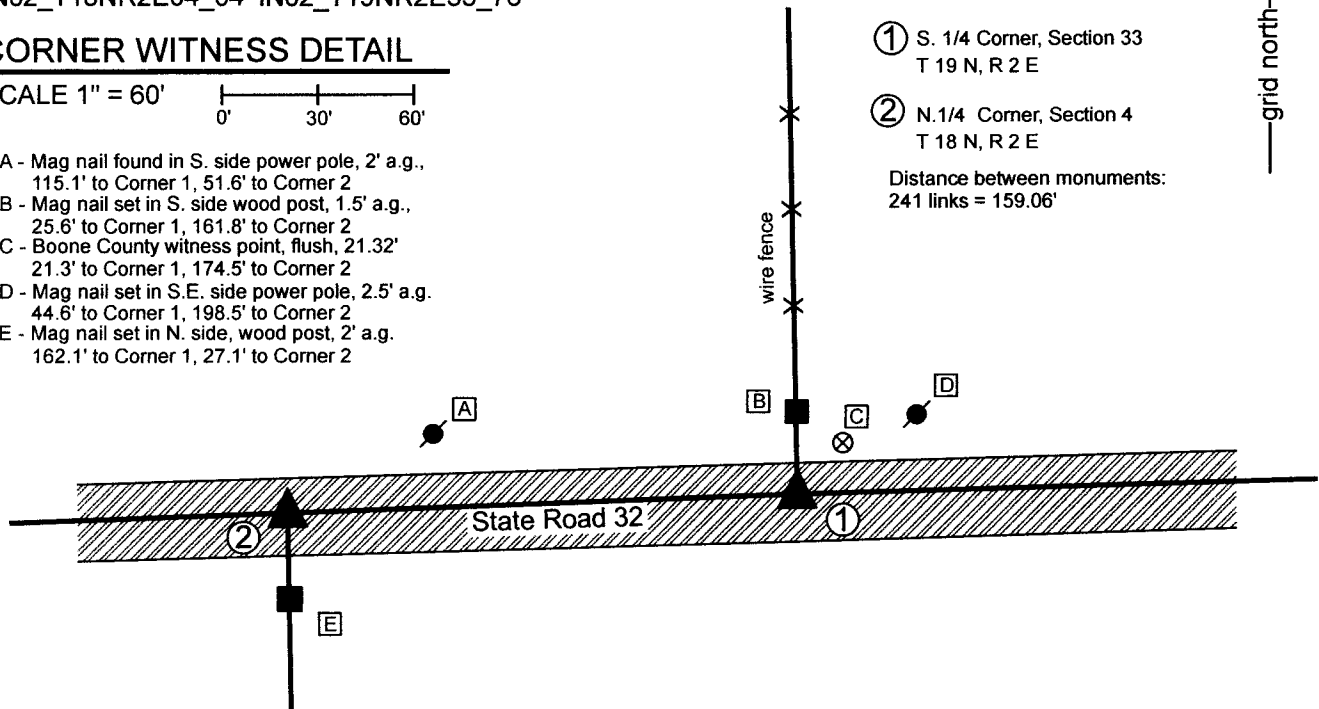


- A - Mag nail found in S. side power pole, 2' a.g., 115.1' to Corner 1, 51.6' to Corner 2
- B - Mag nail set in S. side wood post, 1.5' a.g., 25.6' to Corner 1, 161.8' to Corner 2
- C - Boone County witness point, flush, 21.32' 21.3' to Corner 1, 174.5' to Corner 2
- D - Mag nail set in S.E. side power pole, 2.5' a.g. 44.6' to Corner 1, 198.5' to Corner 2
- E - Mag nail set in N. side, wood post, 2' a.g. 162.1' to Corner 1, 27.1' to Corner 2

① S. 1/4 Corner, Section 33
T 19 N, R 2 E

② N.1/4 Corner, Section 4
T 18 N, R 2 E

Distance between monuments:
241 links = 159.06'

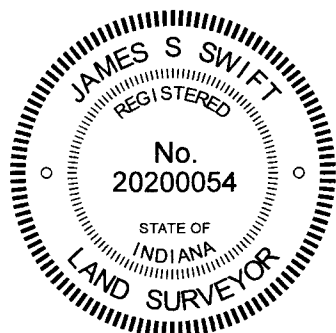


The 1-inch diameter rebar (iron pin) marking Corner 1 was found in place and held as marking the corner.

A BCS record dated September, 1870 states, with respect to Corner 1, "Reestablished from stumps. Set two rocks. One 5-1/2, 5-1/2, 4-1/2 +. Top One 14, 18 by 8 +." No specific descriptions of Corner 2 were found in the BCS Surveyor's Record. Corner 1 is shown as a railroad spike on a BCS tie card dated January 18, 1994. A Location Control Route Survey recorded as Instrument 0201777 in the Office of the Boone County Recorder shows Corner 1 as a 1-inch diameter iron pin per County Surveyor ties. This monument appears to be in the same position as the railroad spike called in the 1994 tie card. Neither document indicates the position of Corner 2.

No excavation was performed at these corners as they fall in a state road. The iron pin in concrete found marking Corner 1 was accepted as being the same monument called for on the Route Survey. Corner 2 was established at the average of the federal closing distances at the northeast and northwest corners of Section 4, being 241 links, or 159.06 feet, west of Corner 1, on the line connecting Corner 1 and the southwest corner of Section 33. This position falls in-line with a wood post on the south side of the road. A Mag Nail was set at this position. This tie card will be presented to INDOT with the request that this nail be replaced by a more durable, stable monument.

Corner 1 was originally established as a wood post in 1819. Corner 2 is not an original federal corner.

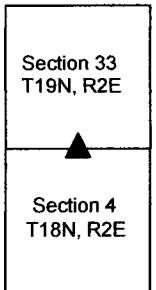


Kenneth E. Hedge
 Kenneth E. Hedge, County Surveyor

James S. Swift
 James S. Swift, IN LS 20200054

October 4, 2022

Union Twp



SECTION CORNER RECORD

SE 000-900

BOONE COUNTY SURVEYOR'S OFFICE

State Plane grid coordinates NAD83 (2011):

Corner 1: North: 1746512.07 East: 3172548.43 (U.S. survey feet)

Corner 2: North: 1746509.06 East: 3172389.93 (U.S. survey feet)

Type and depth of monument:

3/4 inch diameter iron pin, flush (Corner 2) or 1 inch deep (Corner 1)

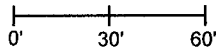
Indiana tie card references:

IN02_T19NR2E33_80 IN02_T19NR2E34_72

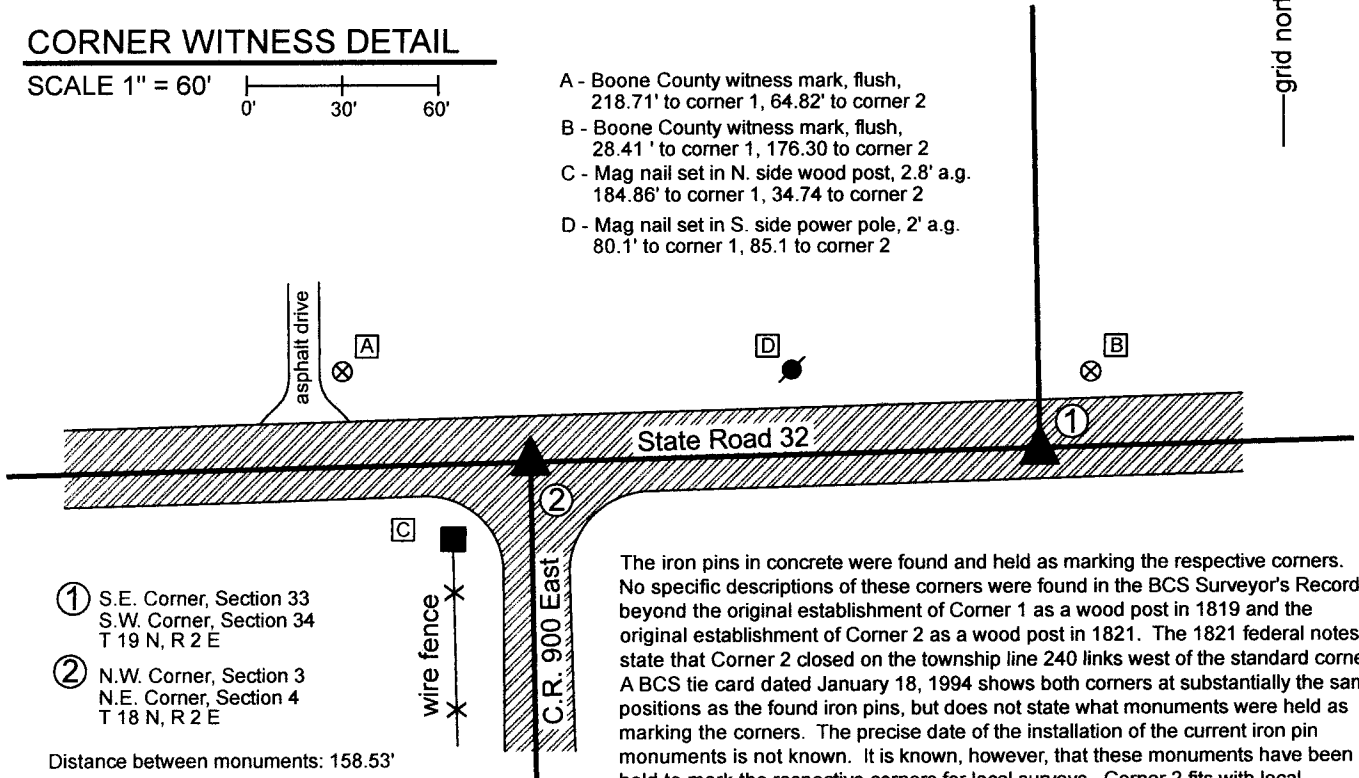
IN02_T18NR2E04_08 IN02_T18NR2E03_00

CORNER WITNESS DETAIL

SCALE 1" = 60'



- A - Boone County witness mark, flush, 218.71' to corner 1, 64.82' to corner 2
- B - Boone County witness mark, flush, 28.41' to corner 1, 176.30 to corner 2
- C - Mag nail set in N. side wood post, 2.8' a.g. 184.86' to corner 1, 34.74 to corner 2
- D - Mag nail set in S. side power pole, 2' a.g. 80.1' to corner 1, 85.1 to corner 2



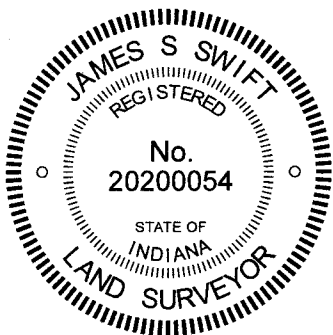
① S.E. Corner, Section 33
S.W. Corner, Section 34
T 19 N, R 2 E

② N.W. Corner, Section 3
N.E. Corner, Section 4
T 18 N, R 2 E

Distance between monuments: 158.53'
Original closing distance = 240 links (158.4')

Note: corner 2 is 1.04' north of the township line as defined between corner 1 and the standard corner to the west (see NE 000-850)

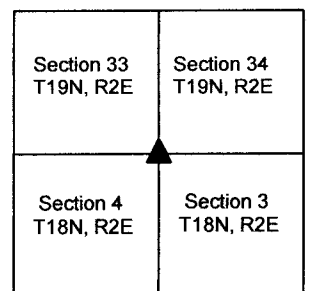
The iron pins in concrete were found and held as marking the respective corners. No specific descriptions of these corners were found in the BCS Surveyor's Record beyond the original establishment of Corner 1 as a wood post in 1819 and the original establishment of Corner 2 as a wood post in 1821. The 1821 federal notes state that Corner 2 closed on the township line 240 links west of the standard corner. A BCS tie card dated January 18, 1994 shows both corners at substantially the same positions as the found iron pins, but does not state what monuments were held as marking the corners. The precise date of the installation of the current iron pin monuments is not known. It is known, however, that these monuments have been held to mark the respective corners for local surveys. Corner 2 fits with local evidence of that corner, being at the approximate center of the intersection of the east-west state road and the county road to the south. Corner 1 is at a distance east of Corner 2 which closely matches the federal closing distance of 240 links. As these corners fall in a state road, no excavation was performed. The found iron pins were held as marking the respective corners.



Kenneth E. Hedge
Kenneth E. Hedge, County Surveyor

James S. Swift
James S. Swift, IN LS 20200054
January 19, 2022

Union Township



SECTION CORNER RECORD

SE 050-800

BOONE COUNTY SURVEYOR'S OFFICE

State Plane grid coordinates NAD83 (NSRS 2007):

North: 1743957.71 East: 3167112.02 (U.S. survey feet)

Type of monument: Harrison, 4" disk 'Section Corner'

Depth: One inch below adjacent road surface

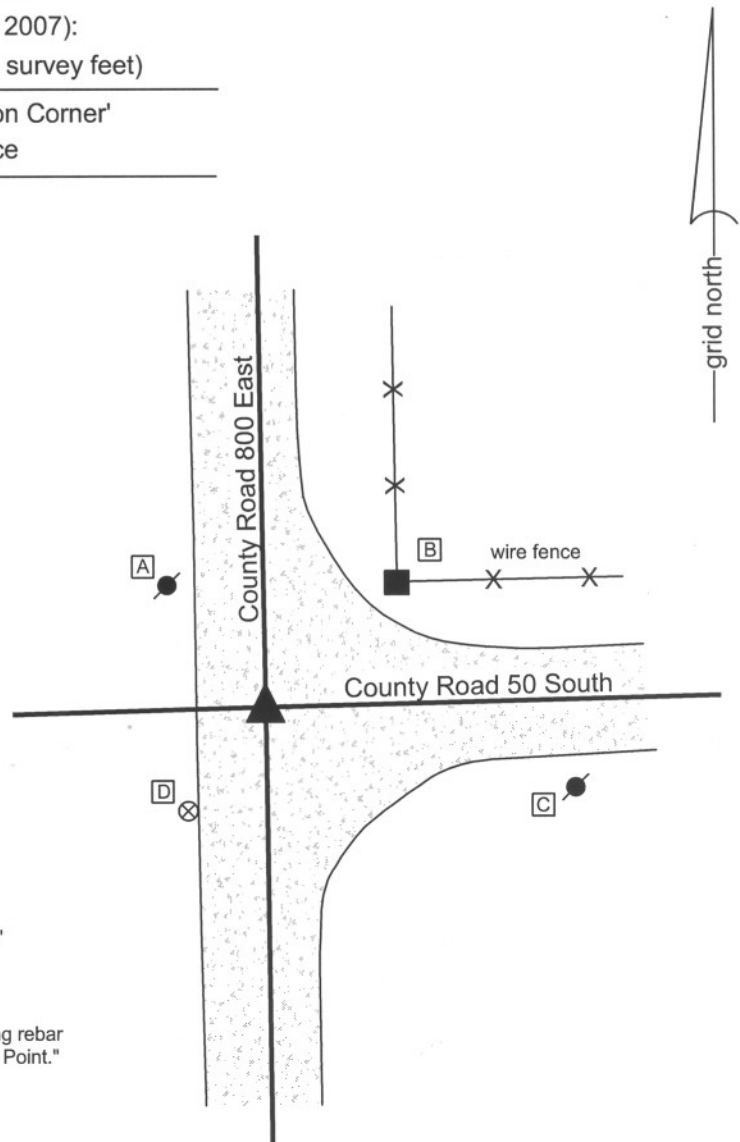
Indiana tie card references:

IN02_T18NR2E04_36

IN02_T18NR2E05_44

CORNER WITNESS DETAIL

SCALE 1" = 30'



- A - Mag nail set in S. side power pole, 2.0' a.g., 23.5'
- B - Mag nail set in S.W. side wood post, 2.0' a.g., 28.3'
- C - Mag nail set in W. side power pole, 3.0' a.g., 48.5'
- D - Boone County witness mark, flush, 20.34'

Boone County witness mark is a 3/8" diameter x 2' long rebar bearing a metal cap stamped "Boone County Witness Point."

The harrison monument was set in place of an iron pipe and stone found.

A BCS tied card dated June 7, 1991 calls the corner a 1 inch iron pipe. The corner is not specifically described in the BCS Surveyor's Record but it is depicted as a terminal point for measurements in 1849 and 1912. This corner was excavated on April 28, 2009. The iron pipe was found at 6 inches deep. A stone was found at 1 foot deep. The stone measured 6 inches N-S by 7 inches E-W by 6 inches tall and was embedded in the clay layer below the road. The iron pipe was driven along the edge of the stone, leaning over the top of the stone. No other evidence was found at this corner. The iron pipe and stone were both removed during excavation and the harrison monument was set in their place, specifically in place of the top of the iron pipe as found prior to excavation.

This corner was originally established as a wood post in July, 1821.

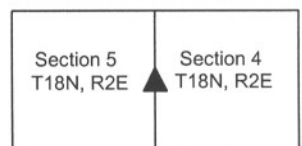


Kenneth E. Hedge
Kenneth E. Hedge, County Surveyor

James S. Swift
James S. Swift, IN LS 20200054

July 14, 2010

Union Township



PHOTOGRAPHIC DOCUMENTATION

Date of photography: May 28, 2009

The iron pipe, as found.



The stone, as found.



For details and documentation, refer to related sheet "Section Corner Record."

SECTION CORNER RECORD

SE 050-900

BOONE COUNTY SURVEYOR'S OFFICE

State Plane grid coordinates NAD83 (NSRS 2007):

North: 1744088.54 East: 3172435.13 (U.S. survey feet)

Type of monument: Harrison, 4" disk 'Section Corner'

Depth: One inch below adjacent road surface

Indiana tie card references:

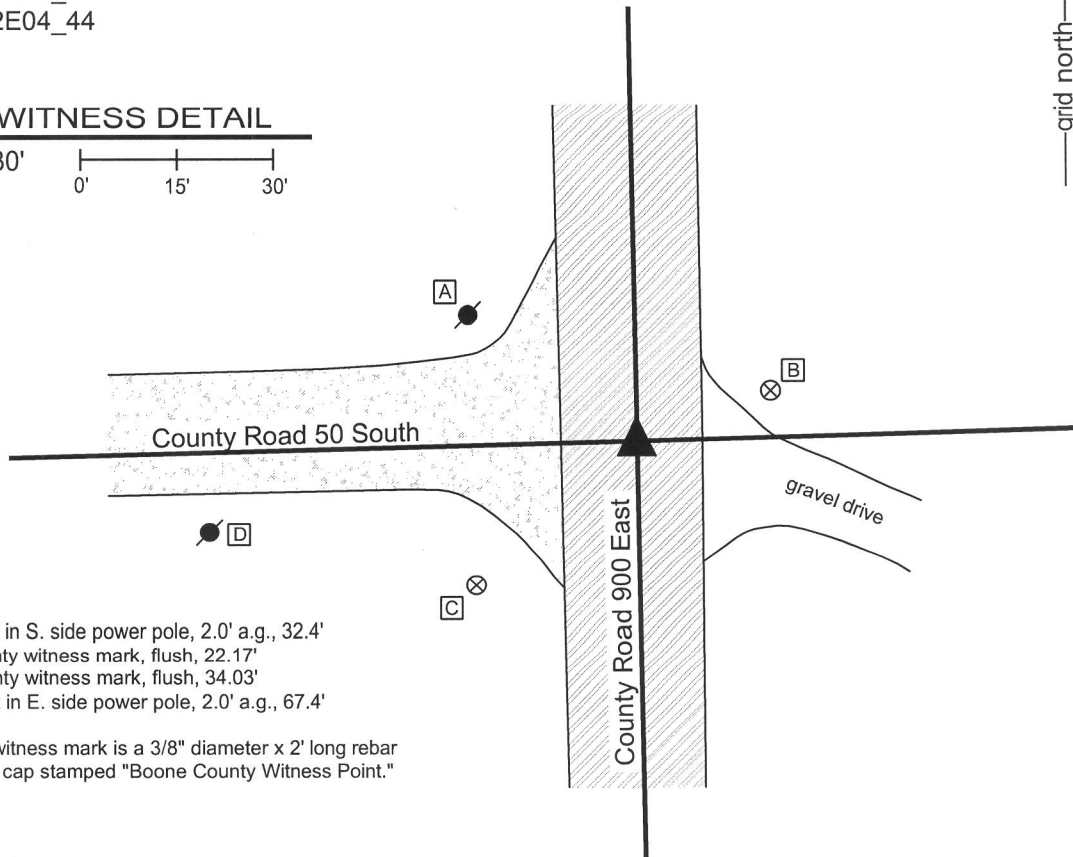
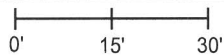
IN02_T18NR2E03_36

IN02_T18NR2E04_44



CORNER WITNESS DETAIL

SCALE 1" = 30'



- A - Mag nail set in S. side power pole, 2.0' a.g., 32.4'
- B - Boone County witness mark, flush, 22.17'
- C - Boone County witness mark, flush, 34.03'
- D - Mag nail set in E. side power pole, 2.0' a.g., 67.4'

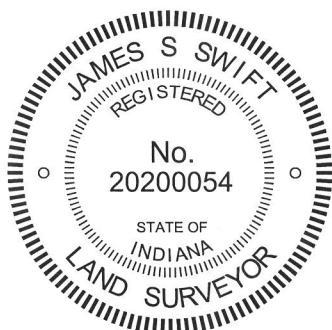
Boone County witness mark is a 3/8" diameter x 2' long rebar bearing a metal cap stamped "Boone County Witness Point."

The Harrison monument was set in place of a stone found.

A BCS record of September 20, 1871 states "Reestablished from the corrected line meeting here. Set a Rock 19.8.7 +." A BCS tie card dated June 6, 1991 shows the corner as a 5/8 inch rebar found.

This corner was excavated on May 1, 2009. A 5/8 inch rebar with a plastic cap stamped "Dodge S0288" was found at 3 inches below grade. A large square topped bolt was found 0.6 foot west of the rebar. The shaft of the bolt was bent at a point 9 inches deep with 8 inches of the bolt extending south from the point where the shaft was bent. The top of the bolt was approximately 1 inch below grade. The bolt had a 1 inch diameter shaft, 2 feet long, with a 1 1/2 inch square head. The record stone was found at 8 inches deep, 1.7 feet south of the rebar. The stone was leaning slightly to the south, as though once hit by a road grader, but was generally vertical. The stone was removed and found to match the record dimensions, though no visible marks were found. With the exception of the slight lean the stone appeared to be undisturbed and was well embedded in the clay. The Harrison monument was set in place of the position where the bottom of the stone was embedded in the clay.

This corner was originally established as a wood post in July, 1821.

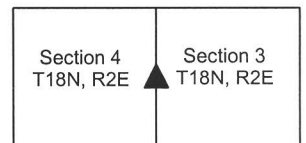


Kenneth E. Hedge
Kenneth E. Hedge, County Surveyor

James S. Swift
James S. Swift, IN LS 20200054

July 14, 2010, Revised March 7, 2013

Union Township



PHOTOGRAPHIC DOCUMENTATION

Date of photography: May 1, 2009

The top of the bolt, as found bent.



View of the stone as first exposed.



Exposing the top of the stone.



The stone, as found, leaning slightly to the south.



Stone Hunter Junior Franklin holding the stone vertical, after removal from the road bed.



The stone, temporarily put back in the road bed and stood in vertical orientation.



For details and documentation, refer to related sheet "Section Corner Record."

SECTION CORNER RECORD

BOONE COUNTY SURVEYOR'S OFFICE

SE 100-800

State Plane grid coordinates NAD83 (NSRS 2007):

North: 1741327.98 East: 3167147.92 (U.S. survey feet)

Type of monument: Harrison, 4" disk 'Section Corner'

Depth: Eight inches below adjacent gravel road surface

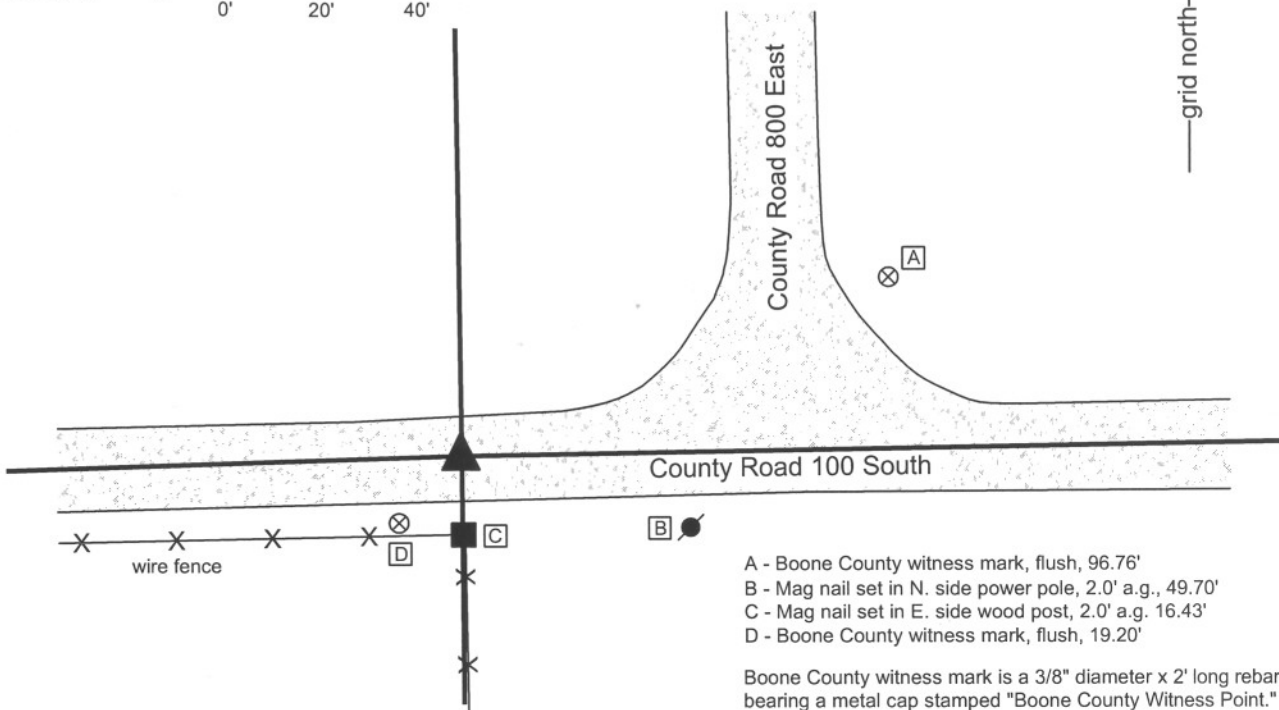
Indiana tie card references:

IN02_T18NR2E04_72 IN02_T18NR2E05_80

IN02_T18NR2E08_08 IN02_T18NR2E09_00

CORNER WITNESS DETAIL

SCALE 1" = 40'



- A - Boone County witness mark, flush, 96.76'
- B - Mag nail set in N. side power pole, 2.0' a.g., 49.70'
- C - Mag nail set in E. side wood post, 2.0' a.g. 16.43'
- D - Boone County witness mark, flush, 19.20'

Boone County witness mark is a 3/8" diameter x 2' long rebar bearing a metal cap stamped "Boone County Witness Point."

The harrison monument was set over a stone found and in place of an iron pipe found.

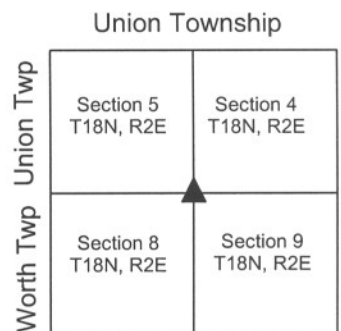
A BCS record of March 22, 1880 states "Reestablished Set Rock 17.24.20+." A BCS tie card of June 7, 1991 shows the corner as a one inch iron pipe found. This corner was excavated on May 14, 2009. Prior to excavation a one inch diameter iron pipe was found at 7 inches deep. This pipe appeared to be the same monument referred to on the 1991 tie card. Excavation revealed a large stone found at 16 inches deep. The stone is 24 inches E-W by 20 inches N-S and measures 17 inches tall on the south side, matching the dimensions described in the 1880 record. No specific markings were found on the stone. The pipe was over the stone, bent slightly and leaning over the top of the stone. The top of the pipe was approximately 2 inches north of the approximate top center of the stone. The position of the pipe was held as the specific position of the corner and the harrison monument was set at this position, over the stone but slightly north of the vague, approximate top center. The pipe was removed during excavation.

This corner was established as a wood post in July, 1821.



Kenneth E. Hedge
 Kenneth E. Hedge, County Surveyor

James S. Swift
 James S. Swift, IN LS 20200054
 July 14, 2010



PHOTOGRAPHIC DOCUMENTATION

Date of photography: May 14, 2009

View of the stone as first exposed.



Brandon Miller holding the iron pipe in the approximate position as it was originally found and oriented, prior to removal.



View from the east, looking across the stone and west along County Road 100 South.



View from the north, looking across the stone and south along the fence to the south.



For details and documentation, refer to related sheet "Section Corner Record."

SECTION CORNER RECORD

SE 100-850

BOONE COUNTY SURVEYOR'S OFFICE

State Plane grid coordinates NAD83 (NSRS 2007):

North: 1741372.10 East: 3169837.81 (U.S. survey feet)

Type of monument: Harrison, 4" disk 'Section Corner'

Depth: Flush with adjacent ground

Indiana tie card references:

IN02_T18NR2E04_72

IN02_T18NR2E09_04

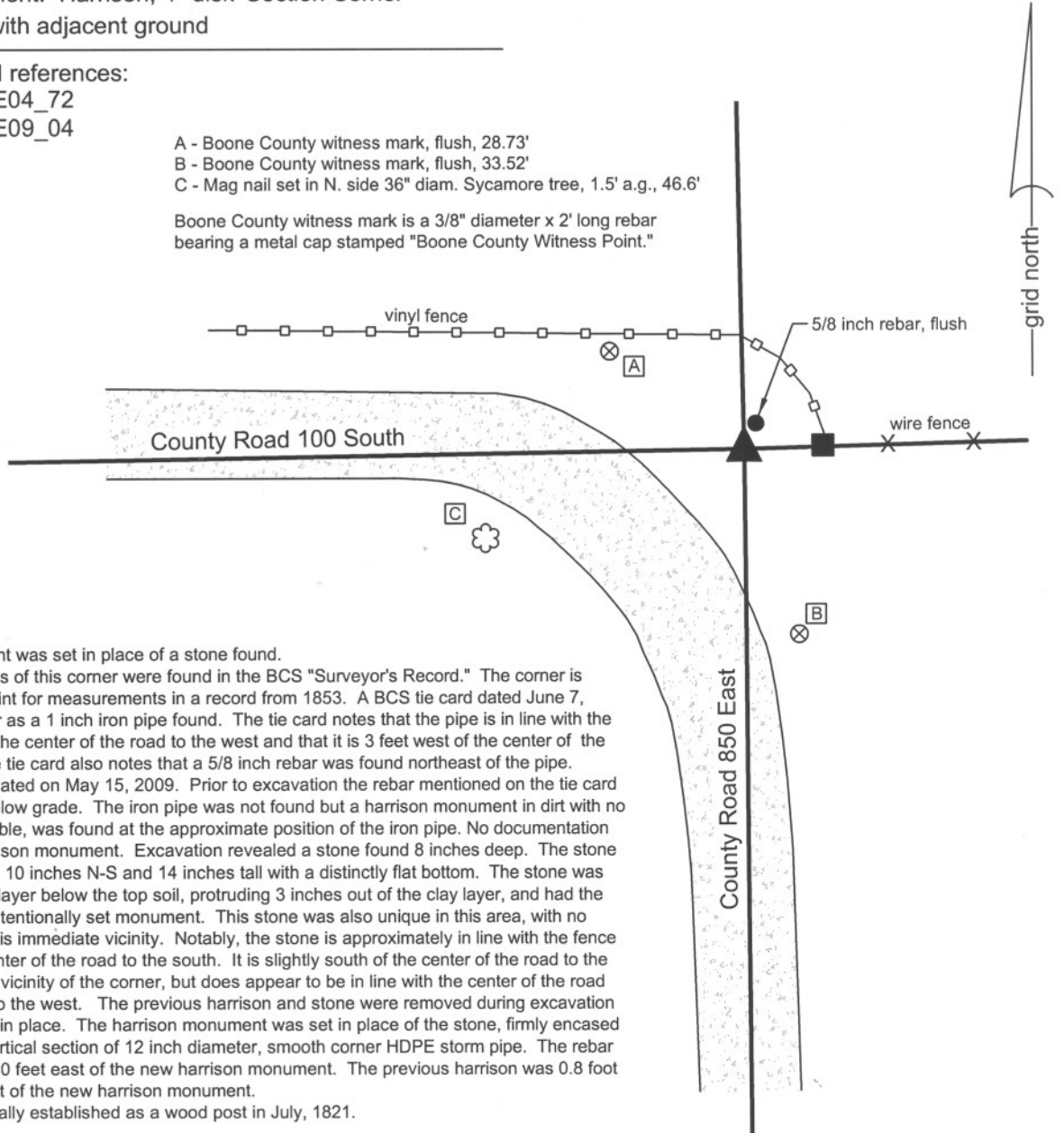
CORNER WITNESS DETAIL

SCALE 1" = 30'



- A - Boone County witness mark, flush, 28.73'
- B - Boone County witness mark, flush, 33.52'
- C - Mag nail set in N. side 36" diam. Sycamore tree, 1.5' a.g., 46.6'

Boone County witness mark is a 3/8" diameter x 2' long rebar bearing a metal cap stamped "Boone County Witness Point."



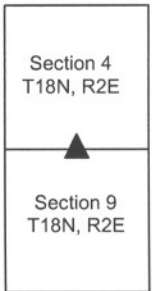
The harrison monument was set in place of a stone found. No specific descriptions of this corner were found in the BCS "Surveyor's Record." The corner is noted as a terminal point for measurements in a record from 1853. A BCS tie card dated June 7, 1991 shows the corner as a 1 inch iron pipe found. The tie card notes that the pipe is in line with the fence to the east and the center of the road to the west and that it is 3 feet west of the center of the road to the south. The tie card also notes that a 5/8 inch rebar was found northeast of the pipe. This corner was excavated on May 15, 2009. Prior to excavation the rebar mentioned on the tie card was found 6 inches below grade. The iron pipe was not found but a harrison monument in dirt with no concrete, hence unstable, was found at the approximate position of the iron pipe. No documentation was found for the harrison monument. Excavation revealed a stone found 8 inches deep. The stone was 10 inches E-W by 10 inches N-S and 14 inches tall with a distinctly flat bottom. The stone was embedded in the clay layer below the top soil, protruding 3 inches out of the clay layer, and had the characteristics of an intentionally set monument. This stone was also unique in this area, with no other rocks found in this immediate vicinity. Notably, the stone is approximately in line with the fence to the east and the center of the road to the south. It is slightly south of the center of the road to the west in the immediate vicinity of the corner, but does appear to be in line with the center of the road several hundred feet to the west. The previous harrison and stone were removed during excavation and the rebar was left in place. The harrison monument was set in place of the stone, firmly encased in concrete within a vertical section of 12 inch diameter, smooth corner HDPE storm pipe. The rebar is 4.5 feet north and 2.0 feet east of the new harrison monument. The previous harrison was 0.8 foot north and 2.3 feet west of the new harrison monument. This corner was originally established as a wood post in July, 1821.



Kenneth E. Hedge
 Kenneth E. Hedge, County Surveyor

James S. Swift
 James S. Swift, IN LS 20200054
 July 14, 2010

Union Twp



PHOTOGRAPHIC DOCUMENTATION

Date of photography: May 15, 2009

View of the stone and the fence to the east.



View of the stone and the road to the west.



The stone, displaced and rolled slightly to the side, showing the clay layer in which the stone was embedded.



View from above the stone, looking south along County Road 850 East.



For details and documentation, refer to related sheet "Section Corner Record."

SECTION CORNER RECORD

SE 100-900

BOONE COUNTY SURVEYOR'S OFFICE

State Plane grid coordinates NAD83 (NSRS 2007):

North: 1741442.23 East: 3172484.20 (U.S. survey feet)

Type of monument: Harrison, 4" disk 'Section Corner'

Depth: One inch below adjacent road surface

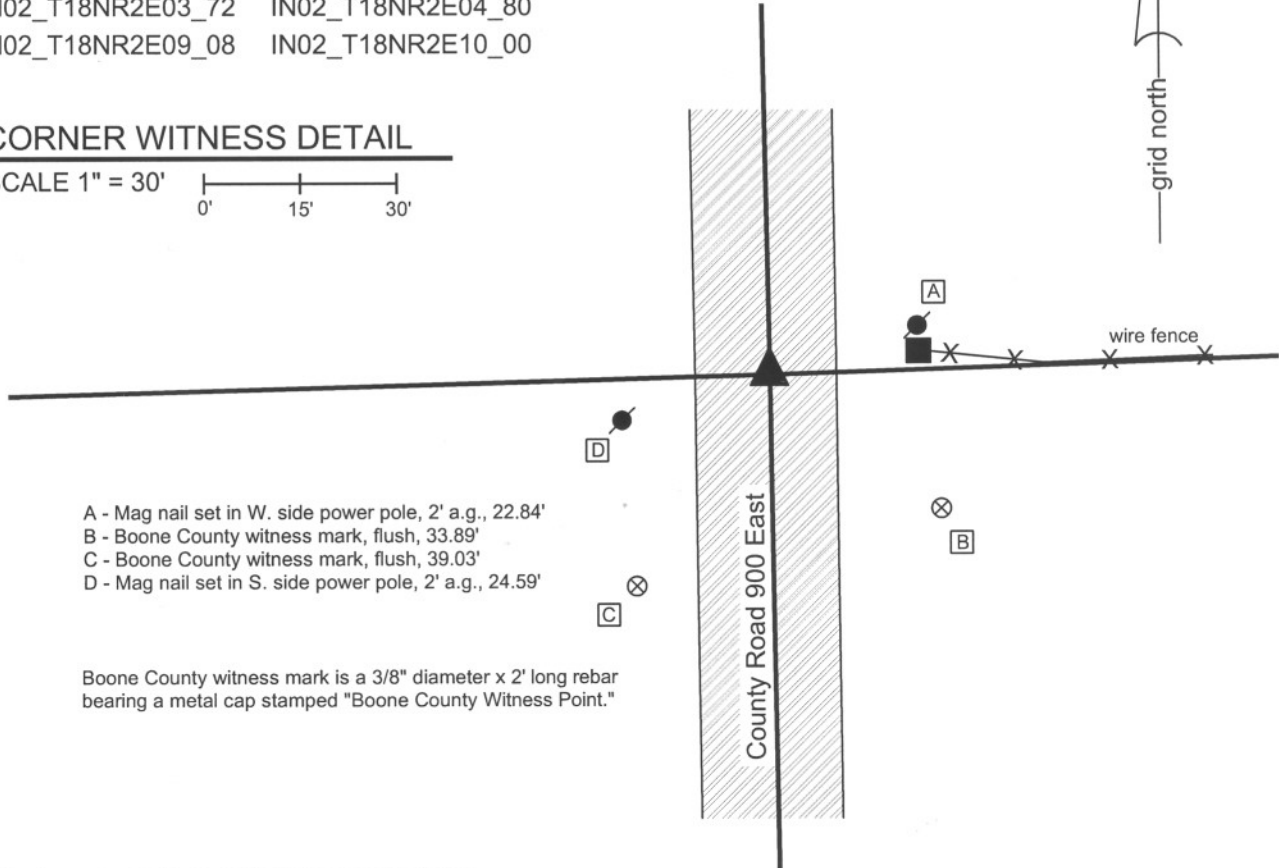
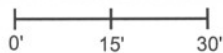
Indiana tie card references:

IN02_T18NR2E03_72 IN02_T18NR2E04_80

IN02_T18NR2E09_08 IN02_T18NR2E10_00

CORNER WITNESS DETAIL

SCALE 1" = 30'



- A - Mag nail set in W. side power pole, 2' a.g., 22.84'
- B - Boone County witness mark, flush, 33.89'
- C - Boone County witness mark, flush, 39.03'
- D - Mag nail set in S. side power pole, 2' a.g., 24.59'

Boone County witness mark is a 3/8" diameter x 2' long rebar bearing a metal cap stamped "Boone County Witness Point."

The Harrison monument was set in place of a stone found.

A BCS record of August 16, 1892 states "Found from north beech, placed a small rock at corner but no mark on it." A BCS tie card dated June 6, 1991 shows the corner as a 5/8 inch rebar found. This corner was excavated on May 15, 2009. Prior to excavation, a 5/8 inch rebar was found in a hole in the asphalt at 8 inches below grade. Excavation revealed a stone found at 6 inches deep, slightly south and east of the rebar. The stone is embedded in the clay layer below the road, protruding approximately 1 inch out of the clay. The stone was 9 inches E-W by 7 inches N-S and 10 inches tall. No specific marks were found on the stone. The stone is in line with the fence to the east. It is noted that the stone was shallow but embedded in the clay, due to a road bed of minimal thickness. The 1876 map of Boone County does not show this section of road, indicating that this corner was not crossed by an early wagon road. This may explain the lack of depth to the road bed, as the lower portion of the road is typically of the loose sandy, gravel material which was placed on the wagon roads. This section of road does not contain this material, with asphalt over modern road stone directly over the clay layer. The stone was removed and the Harrison monument was set in its place. The rebar, removed during excavation, was 0.7 foot north and 0.2 foot east of the stone. This corner was originally established as a wood post in July, 1821.



Kenneth E. Hedge
 Kenneth E. Hedge, County Surveyor

James S. Swift
 James S. Swift, IN LS 20200054
 July 14, 2010

Union Township

Section 4 T18N, R2E	Section 3 T18N, R2E
Section 9 T18N, R2E	Section 10 T18N, R2E

PHOTOGRAPHIC DOCUMENTATION

Date of photography: May 15, 2009

The stone, removed from the road bed and stood in the orientation in which it was found. View is of the west side of the stone, as found.



View from the north, looking across the stone and south along County Road 900 East.



For details and documentation, refer to related sheet "Section Corner Record."