

SECTION CORNER RECORD

SE 000-200

BOONE COUNTY SURVEYOR'S OFFICE

State Plane grid coordinates NAD83 (2011):

Corner 1: North: 1745656.21 East: 3135153.46 (U.S. survey feet)

Corner 2: North: 1745656.68 East: 3135181.10 (U.S. survey feet)

Type of monuments: 1 inch diameter iron pin (rebar) in concrete

Depth: flush with adjacent surface

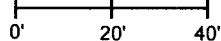
Indiana tie card references:

IN02_T18NR1E05_08 IN02_T18NR1E04_00

IN02_T19NR1E32_80 IN02_T19NR1E33_72

CORNER WITNESS DETAIL

SCALE 1" = 40'

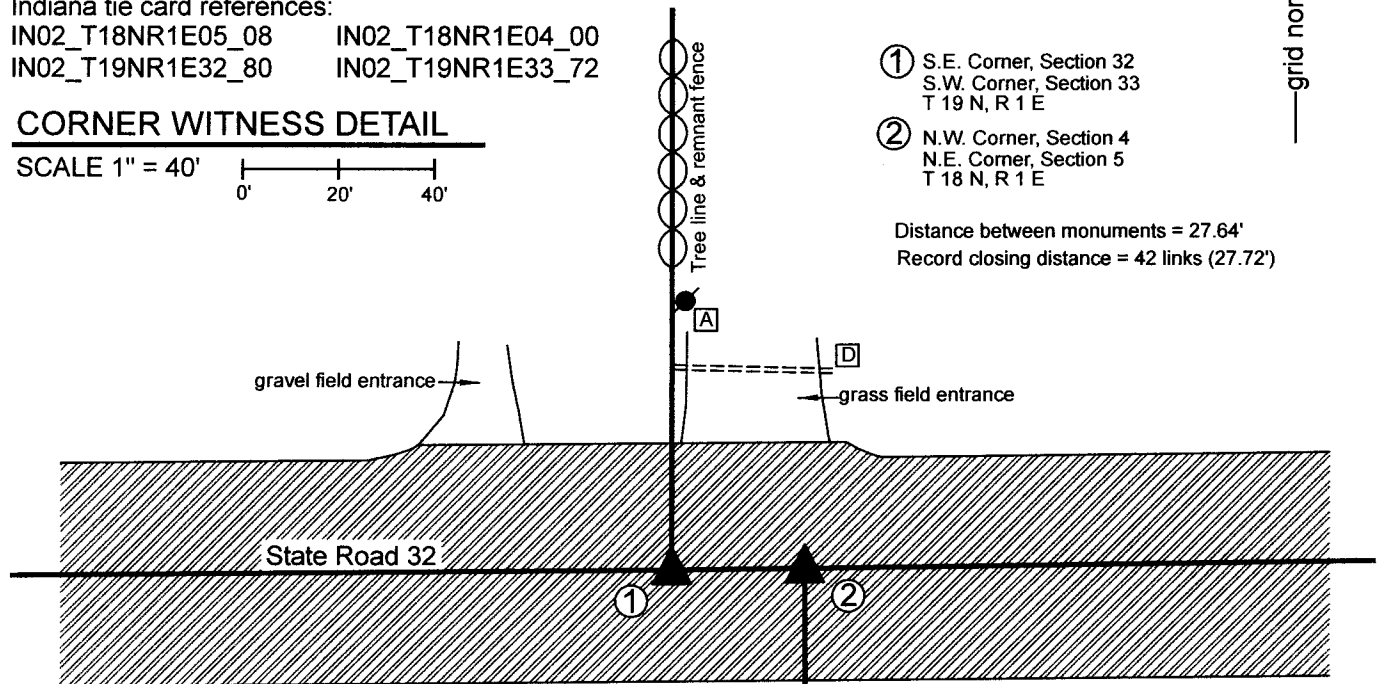


① S.E. Corner, Section 32
S.W. Corner, Section 33
T 19 N, R 1 E

② N.W. Corner, Section 4
N.E. Corner, Section 5
T 18 N, R 1 E

Distance between monuments = 27.64'

Record closing distance = 42 links (27.72')



A - Mag nail in S. side power pole, 2' a.g.

56.1' to corner 1, 71.6' to corner 2

B - Boone County witness mark, flush

74.6' to corner 1, 51.3' to corner 2

C - Boone County witness mark, flush

33.9' to corner 1, 34.9' to corner 2

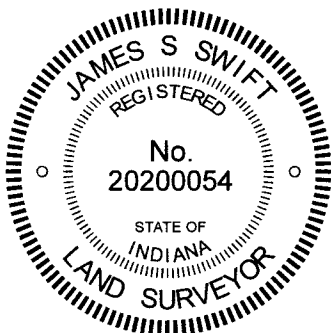
D - East end, CMP culvert, top

53.2' to corner 1, 41.4' to corner 2

Boone County witness mark is a 3/8" diameter x 2' long rebar bearing a metal cap stamped "Boone County Witness Point."

The iron pins in concrete were found in place and held as marking the respective corners.

Corner 1 was established as a wood post in 1819. Corner 2 was established as a wood post, 42 links east of Corner 1, in 1820. No specific descriptions of these corners were found in the BCS Surveyor's Record beyond the original establishment of the corners as wood posts. A BCS tie card dated July 27, 2005 shows the corners as 'iron pins in concrete.' A Location Control Route Survey recorded as Instrument 0201777 in the office of the Boone County Recorder also shows the corners as iron pins in concrete. The found monuments match the description and positions of the BCS tie card and the INDOT Route survey. Corner 1 falls at the southerly prolongation of a tree line with intermittent fence. Corner 2 falls approximately 42 links east of Corner 1, in agreement with the 1820 federal field notes. No excavation was performed as these corners fall in a state road. The iron pins in concrete were held as marking the respective corners.



Kenneth E. Hedge
 Kenneth E. Hedge, County Surveyor

James S. Swift
 James S. Swift, IN LS 20200054
 September 28, 2020

Center Township

Section 32 T19N, R1E	Section 33 T19N, R1E
Section 5 T18N, R1E	Section 4 T18N, R1E

SECTION CORNER RECORD

SE 000-250

BOONE COUNTY SURVEYOR'S OFFICE

State Plane grid coordinates NAD83 (2011):

Corner 1: North: 1745690.59 East: 3137805.56 (U.S. survey feet)

Corner 2: North: 1745690.85 East: 3137825.39 (U.S. survey feet)

Type of monument: Corner 1: Iron pin (rebar) in concrete, Corner 2: Mag Nail

Depth: flush with adjacent road surface

Indiana tie card references:

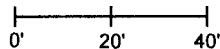
IN02_T18NR1E04_04

IN02_T19NR1E33_76



CORNER WITNESS DETAIL

SCALE 1" = 40'



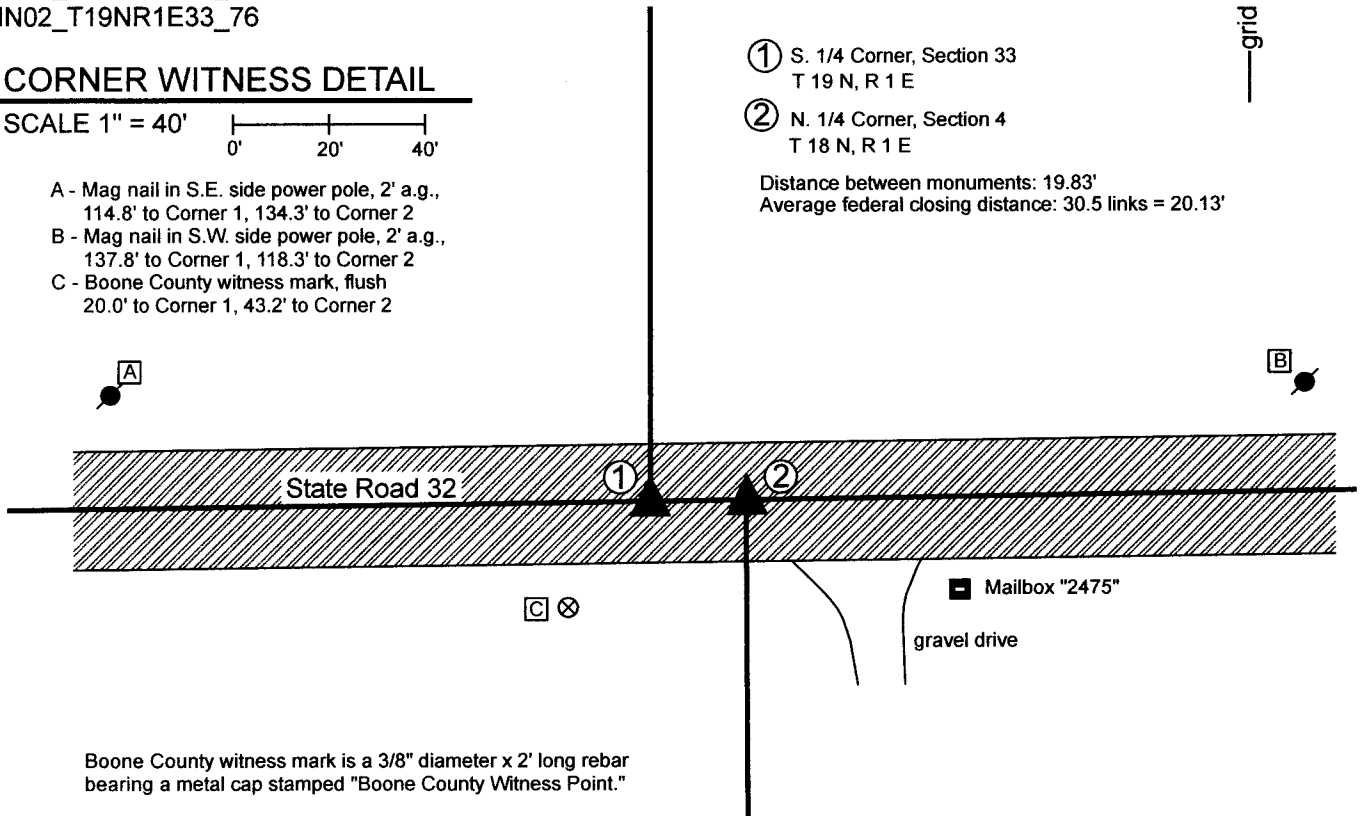
- A - Mag nail in S.E. side power pole, 2' a.g., 114.8' to Corner 1, 134.3' to Corner 2
- B - Mag nail in S.W. side power pole, 2' a.g., 137.8' to Corner 1, 118.3' to Corner 2
- C - Boone County witness mark, flush 20.0' to Corner 1, 43.2' to Corner 2

① S. 1/4 Corner, Section 33
T 19 N, R 1 E

② N. 1/4 Corner, Section 4
T 18 N, R 1 E

Distance between monuments: 19.83'

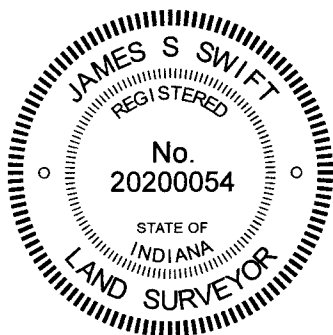
Average federal closing distance: 30.5 links = 20.13'



Boone County witness mark is a 3/8" diameter x 2' long rebar bearing a metal cap stamped "Boone County Witness Point."

The iron pin in concrete marking Corner 1 was found in place and held as marking the corner. The Mag nail marking Corner 2 was set per a 2005 BCS tie card.

Corner 1 was originally established as a wood post in 1819. Corner 2 is not an original federal corner. No specific descriptions of these corners were found in the BCS Surveyor's record beyond the original establishment of Corner 1. The monument marking corner 1 is shown on a Location Control Route Survey recorded as Instrument 0201777 in the Office of the Boone County Recorder. This position is believed to be the same position as that of a railroad spike shown on a BCS tie card dated January 18, 1994. A BCS tie card dated December 21, 2005 shows the iron pin marking Corner 1 and also shows a Mag Nail as marking Corner 2 at a point 19.83 feet east the iron pin at Corner 1. That nail has been removed during previous road work. It is noted that the average of the closing distances reported by the original federal surveyors at the northeast and northwest corners of Section 4 is 30.5 links, or 20.13 feet. The 2005 tie card shows two corners at 19.83 feet apart. This distance was held and Corner 2 was established on the line connecting Corner 1 and the southeast corner of Section 33 at 19.83 feet. No excavation was performed at these corners as they fall in a state road.



Kenneth E. Hedge
Kenneth E. Hedge, County Surveyor

James S. Swift
James S. Swift, IN LS 20200054

October 4, 2022 (Rev. Oct. 11, 2022)

Center
Township

Section 33
T19N, R1E

Section 4
T18N, R1E

SECTION CORNER RECORD

SE 000-300

BOONE COUNTY SURVEYOR'S OFFICE

State Plane grid coordinates NAD83 (2011):

Corner 1: North: 1745726.02 East: 3140457.28 (U.S. survey feet)

Corner 2: North: 1745726.18 East: 3140469.80 (U.S. survey feet)

Type of monuments: 1 inch diameter iron pin (rebar) in concrete

Depth: flush with adjacent road surface

Indiana tie card references:

IN02_T18NR1E03_00 IN02_T18NR1E04_08

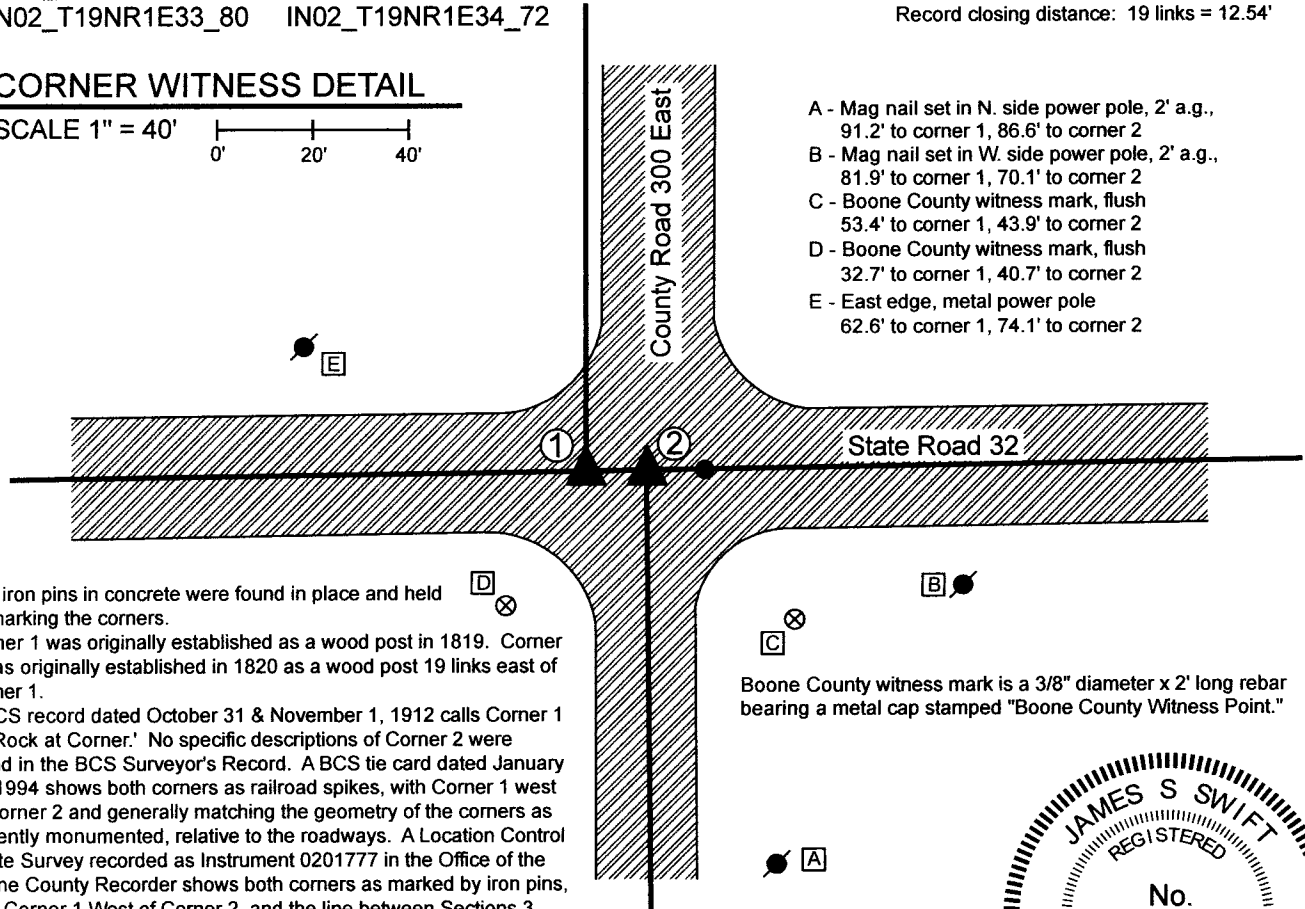
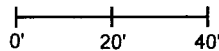
IN02_T19NR1E33_80 IN02_T19NR1E34_72

- ① S.E. Corner, Section 33
S.W. Corner, Section 34
T 19 N, R 1 E
- ② N.W. Corner, Section 3
N.E. Corner, Section 4
T 19 N, R 1 E

Distance between monuments: 12.52'
Record closing distance: 19 links = 12.54'

CORNER WITNESS DETAIL

SCALE 1" = 40'



- A - Mag nail set in N. side power pole, 2' a.g., 91.2' to corner 1, 86.6' to corner 2
- B - Mag nail set in W. side power pole, 2' a.g., 81.9' to corner 1, 70.1' to corner 2
- C - Boone County witness mark, flush 53.4' to corner 1, 43.9' to corner 2
- D - Boone County witness mark, flush 32.7' to corner 1, 40.7' to corner 2
- E - East edge, metal power pole 62.6' to corner 1, 74.1' to corner 2

The iron pins in concrete were found in place and held as marking the corners.

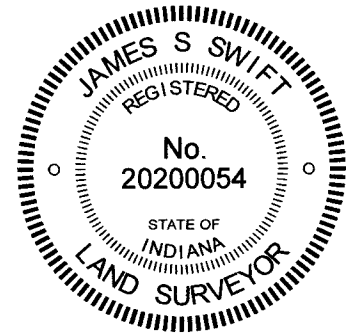
Corner 1 was originally established as a wood post in 1819. Corner 2 was originally established in 1820 as a wood post 19 links east of Corner 1.

A BCS record dated October 31 & November 1, 1912 calls Corner 1 as 'Rock at Corner.' No specific descriptions of Corner 2 were found in the BCS Surveyor's Record. A BCS tie card dated January 18, 1994 shows both corners as railroad spikes, with Corner 1 west of Corner 2 and generally matching the geometry of the corners as currently monumented, relative to the roadways. A Location Control Route Survey recorded as Instrument 0201777 in the Office of the Boone County Recorder shows both corners as marked by iron pins, with Corner 1 West of Corner 2, and the line between Sections 3 and 4 generally in-line with the center of C.R. 300 East and the line between Sections 33 and 34 as slightly west of C.R. 300 East. The found monuments agree with the positions of the corners as shown on this survey and agree with the relative positions of the corners per the original federal notes, with the closing corner east of the standard corner. It is also noted that, though County Road 300 East does not jog at the township line, as would be expected, a straight line connecting the iron pin at Corner 1 and a Harrison monument at the northeast corner of Section 33 lines up reasonably well with the road along the north half of that line and lines up generally with a Harrison monument marking the east quarter corner of Section 33. It appears that C.R. 300 East jogs slightly to the east as it crosses a large open ditch approximately 2000 feet north of the subject corners.

The found monuments were held as shown on the 1994 BCS tie card and the Route Control Survey. It is noted that BCS tie cards dated September 1, 2005 reverse the positions of the corners, showing Corner 1 as east of Corner 2. No evidence was found to support the idea that these corners are reversed from the orientation noted in the original federal notes.

Another iron pin found 12.2 feet east of Corner 2 is of unknown origin, does not match any of the above-mentioned documents and is not recognized as a section corner.

Boone County witness mark is a 3/8" diameter x 2' long rebar bearing a metal cap stamped "Boone County Witness Point."



Kenneth E. Hedge
Kenneth E. Hedge, County Surveyor

James S. Swift
James S. Swift, IN LS 20200054
September 28, 2022

Center Township

Section 33 T19N, R1E	Section 34 T19N, R1E
Section 4 T18N, R1E	Section 3 T18N, R1E

SECTION CORNER RECORD

SE 050-200

BOONE COUNTY SURVEYOR'S OFFICE

State Plane grid coordinates NAD83 (2011):

North: 1743301.68 East: 3135193.24 (U.S. survey feet)

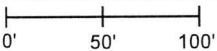
Type of monument: Stone, top / high point

Depth: Top of stone at four inches above grade

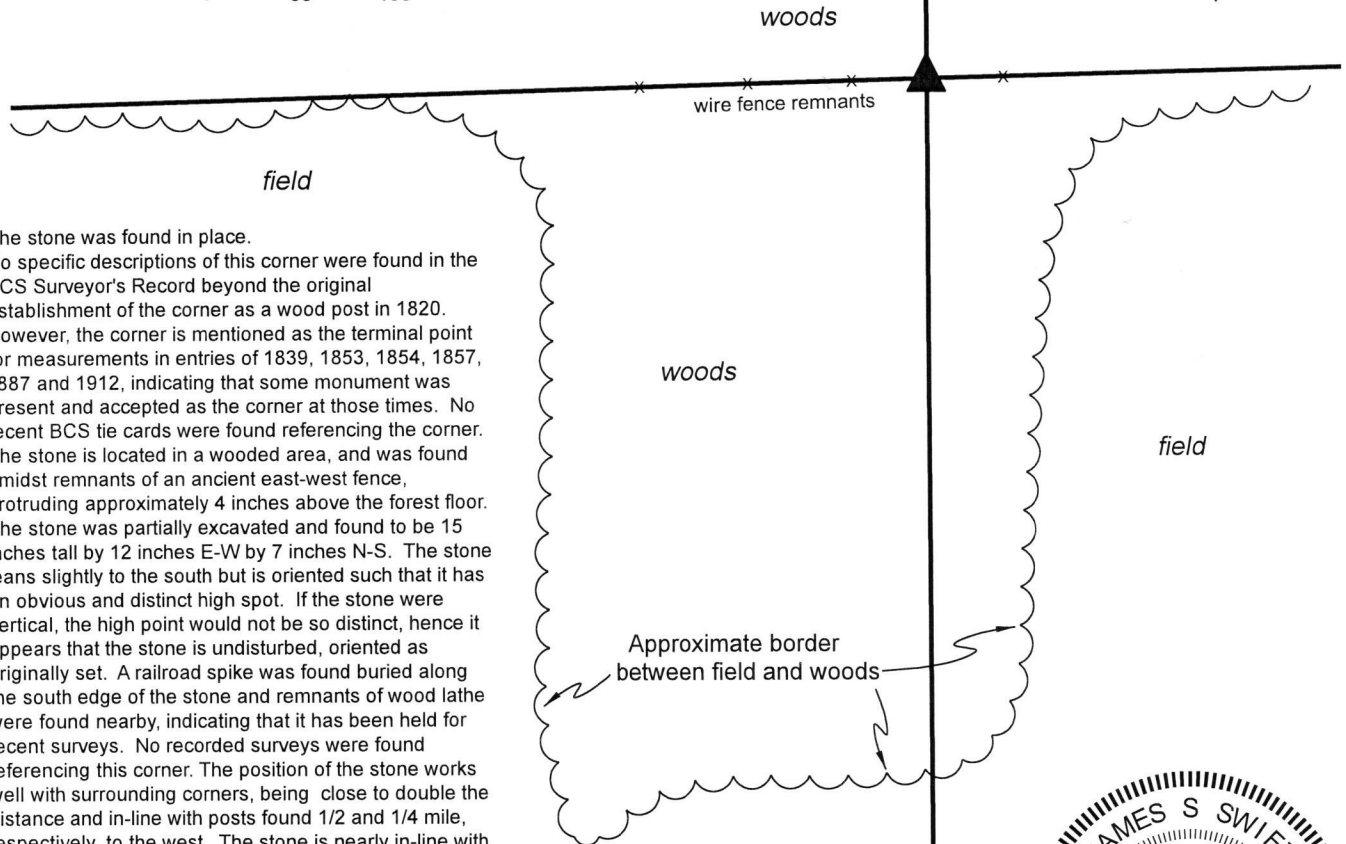
Indiana tie card references:

IN02_T18NR1E05_44 IN02_T18NR1E04_36

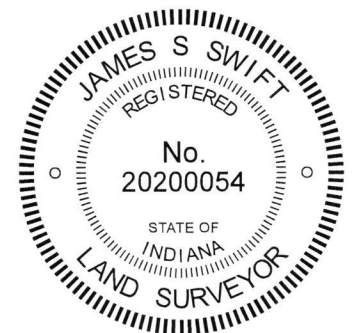
CORNER WITNESS DETAIL

SCALE 1" = 100' 

The stone is clearly witnessed by a fiberglass post and a steel post. No specific distance ties are provided.

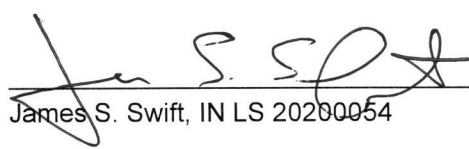


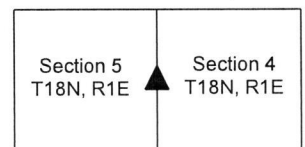
The stone was found in place. No specific descriptions of this corner were found in the BCS Surveyor's Record beyond the original establishment of the corner as a wood post in 1820. However, the corner is mentioned as the terminal point for measurements in entries of 1839, 1853, 1854, 1857, 1887 and 1912, indicating that some monument was present and accepted as the corner at those times. No recent BCS tie cards were found referencing the corner. The stone is located in a wooded area, and was found amidst remnants of an ancient east-west fence, protruding approximately 4 inches above the forest floor. The stone was partially excavated and found to be 15 inches tall by 12 inches E-W by 7 inches N-S. The stone leans slightly to the south but is oriented such that it has an obvious and distinct high spot. If the stone were vertical, the high point would not be so distinct, hence it appears that the stone is undisturbed, oriented as originally set. A railroad spike was found buried along the south edge of the stone and remnants of wood lathe were found nearby, indicating that it has been held for recent surveys. No recorded surveys were found referencing this corner. The position of the stone works well with surrounding corners, being close to double the distance and in-line with posts found 1/2 and 1/4 mile, respectively, to the west. The stone is nearly in-line with the section corners to the north and south, with the high point of the stone 0.5 foot east of a straight line connecting those corners. With respect to the original federal survey, the stone is 4.5 feet south of a proportional position computed with respect to the variation between measured dimensions and original federal dimensions. The stone was held as marking the corner. The distinct high point, near the west edge of the stone is held as the specific location of the corner. An orange fiberglass lathe stamped 'Survey Marker' and a steel post were set beside the stone to witness its position.



Center Township


 Kenneth E. Hedge, County Surveyor


 James S. Swift, IN LS 20200054



March 6, 2019

SECTION CORNER RECORD

SE 050-300

BOONE COUNTY SURVEYOR'S OFFICE

State Plane grid coordinates NAD83 (NSRS 2007):
North: 1743422.10 East: 3140493.45 (U.S. survey feet)

Type of monument: Harrison, 4" disk 'Section Corner'
Depth: One inch below adjacent road surface

Indiana tie card references:
IN02_T18NR1E03_36
IN02_T18NR1E04_44

CORNER WITNESS DETAIL

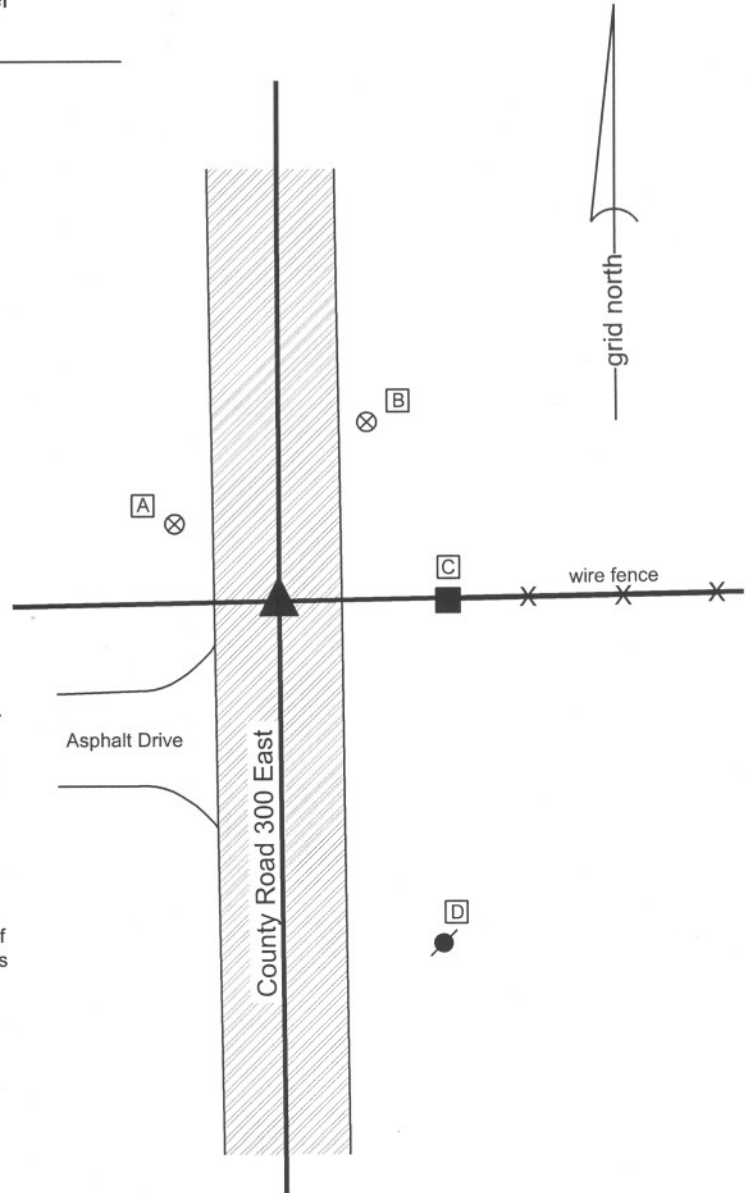
SCALE 1" = 30'
0' 15' 30'

- A - Boone County witness mark, flush, 20.24'
- B - Boone County witness mark, flush, 31.18'
- C - Mag nail set on N. side wood post, 1.2' a.g., 25.80'
- D - Mag nail set on N. side power pole, 2.0' a.g., 57.87'

Boone County witness mark is a 3/8" diameter x 2' long rebar bearing a metal cap stamped "Boone County Witness Point."

The harrison monument was set over the top, center of a stone found. A BCS tie card dated October 25, 2005 calls for a steel rail with no documentation of source. No other specific BCS records were found for this corner, though it is depicted in the record as a terminal point for measurements in 1853 and 1859.

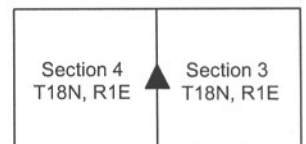
This corner was excavated on October 22, 2009. Prior to excavation a railroad rail was visible in a hole at 4 inches below grade. A stone was found at 6 inches deep, approximately 0.2 foot north and 0.6 foot east of the rail. The stone measures 4 inches N-S by 8 inches E-W by 17 inches tall. The stone was well embedded in the clay layer at the bottom of the road, protruding approximately 4 inches out of the clay and into the bottom layer of the road bed and appeared to be undisturbed. The railroad rail was approximately along the west side of the stone. No documentation was found with respect to the rail and it is not known whether the rail was intended to witness the stone or whether it was intended to represent the actual corner. The rail and the stone were both removed during excavation. The harrison monument was set at the position of the top center of the stone. This corner was originally established as a wood post in June, 1822.



Kenneth E. Hedge
Kenneth E. Hedge, County Surveyor

James S. Swift
James S. Swift, IN LS 20200054
July 14, 2010

Center Township



PHOTOGRAPHIC DOCUMENTATION

Date of photography: October 22, 2009

View of the stone as first exposed, along with the railroad rail.



View of the stone from the south.



View from the north, looking across the stone and south along County Road 300 East.



View from the west, looking across the stone and east along the fence to the east.



For details and documentation, refer to related sheet "Section Corner Record."

SECTION CORNER RECORD

SE 100-200

BOONE COUNTY SURVEYOR'S OFFICE

State Plane grid coordinates NAD83 (NSRS 2007):

North: 1740642.23 East: 3135205.97 (U.S. survey feet)

Type of monument: Harrison, 4" disk 'Section Corner'

Depth: One inch below adjacent road surface

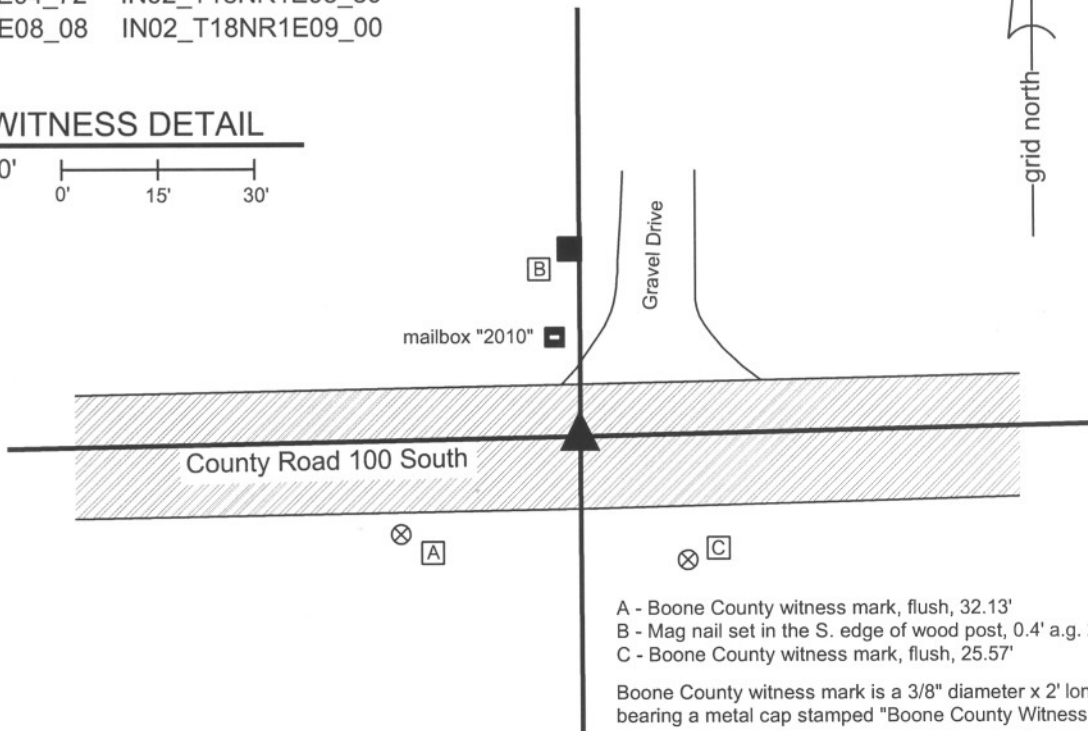
Indiana tie card references:

IN02_T18NR1E04_72 IN02_T18NR1E05_80

IN02_T18NR1E08_08 IN02_T18NR1E09_00

CORNER WITNESS DETAIL

SCALE 1" = 30'



- A - Boone County witness mark, flush, 32.13'
- B - Mag nail set in the S. edge of wood post, 0.4' a.g. 27.38'
- C - Boone County witness mark, flush, 25.57'

Boone County witness mark is a 3/8" diameter x 2' long rebar bearing a metal cap stamped "Boone County Witness Point."

The harrison monument was set over a stone found.

A BCS record of February 9, 1887 states "Re-est. by measure from H-H sec. 9. Set Rock 4,14,19 +" A BCS tie card dated August 16, 1967 shows the corner but makes no mention of a monument. A BCS reference sheet dated July 8, 1989 discusses uncertainties associated with a PK nail found in the vicinity of the corner. A BCS tie card dated June 20, 1991 shows the corner as a railroad rail found. A BCS tie card dated October 21, 2005 shows the corner as a harrison monument with no documentation of source.

This corner was excavated on October 19, 2009. Prior to excavation, a harrison monument was visible at the surface of the road. Excavation revealed a steel railroad rail found on end at 12 inches deep. A rebar was also found on the southwest side of the railroad rail. The harrison monument had been over the rebar. Both the rebar and the rail were removed. A stone was found at 18 inches deep, 1.6 feet North and 2.6 feet East of the position of the harrison monument. The stone is completely embedded in the clay layer below the road bed, with the top of the stone at the top of the clay layer. The stone is 14 inches tall and is not oriented with the cardinal directions. The top of the stone measures 12 inches in the NE-SW dimension and a spur at the bottom of the stone on the southwest side protrudes 2 inches for a total 14 inches. The top of the stone measures 6 inches wide in the NW-SE dimension and a spur on the southeast side protrudes for 3 inches for a total of 9 inches. No visible marks were found. The written record states that the stone is 4,14,9. The stone found measures 14,14,9. The found stone also fits well with the local evidence in the E-W dimension in the form of an old post on the north side of the road. The harrison, railroad rail and rebar were all west of this post. The stone was accepted as the corner and a harrison monument was set over the top center of the main ridge of the stone.

This corner was originally established as a wood post in June, 1820.



Kenneth E. Hedge
 Kenneth E. Hedge, County Surveyor

James S. Swift
 James S. Swift, IN LS 20200054
 July 14, 2010

Center Township

Section 5 T18N, R1E	Section 4 T18N, R1E
Section 8 T18N, R1E	Section 9 T18N, R1E

PHOTOGRAPHIC DOCUMENTATION

Date of photography: October 19, 2009

View of the stone as first exposed.



View of the stone more fully exposed.
View from the west.



View from the south, looking across the stone (hidden behind the corner of pavement), and north to the old post on the north side of the road.



Similar view to above. View from the southwest.



Close-up of the stone as found and exposed.



For details and documentation, refer to related sheet "Section Corner Record."

SECTION CORNER RECORD

SE 100-250

BOONE COUNTY SURVEYOR'S OFFICE

State Plane grid coordinates NAD83 (NSRS 2007):

North: 1740700.63 East: 3137860.28 (U.S. survey feet)

Type of monument: Harrison, 4" disk 'Section Corner'

Depth: One inch below adjacent road surface

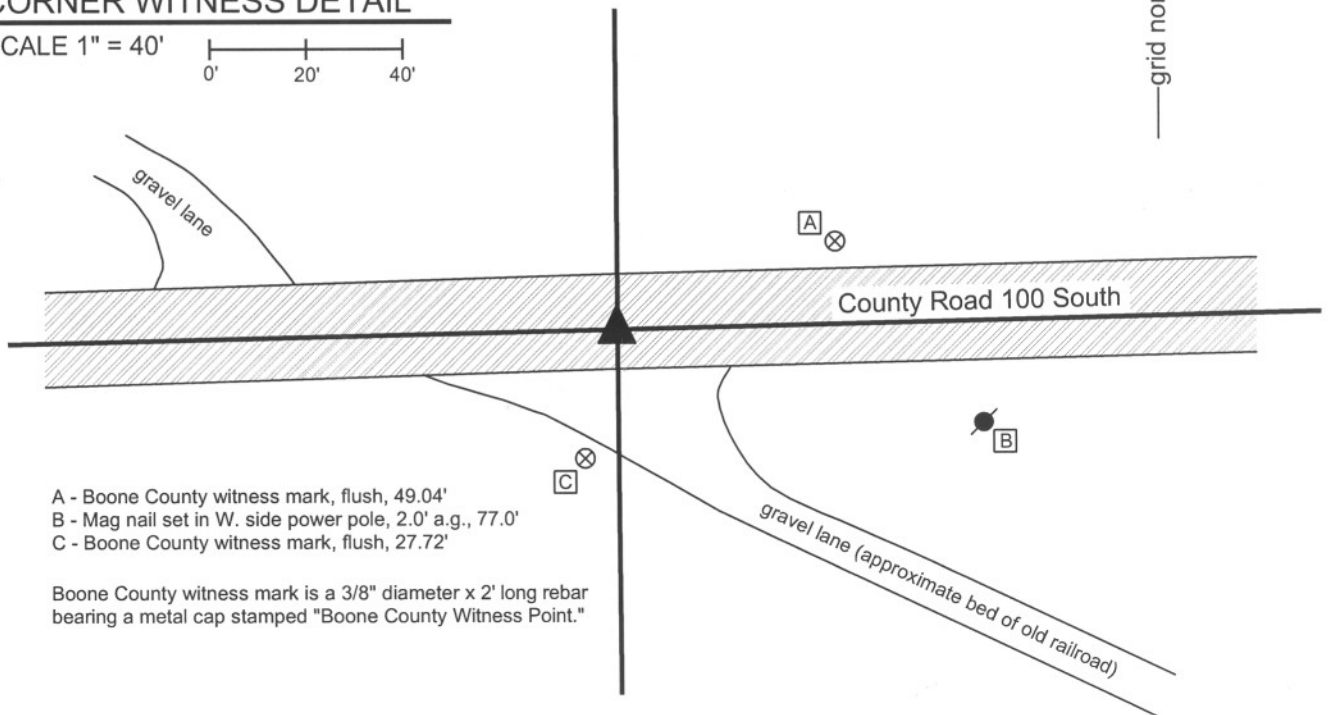
Indiana tie card references:

IN02_T18NR1E03_76

IN02_T18NR1E10_04

CORNER WITNESS DETAIL

SCALE 1" = 40'



- A - Boone County witness mark, flush, 49.04'
- B - Mag nail set in W. side power pole, 2.0' a.g., 77.0'
- C - Boone County witness mark, flush, 27.72'

Boone County witness mark is a 3/8" diameter x 2' long rebar bearing a metal cap stamped "Boone County Witness Point."

The harrison monument was set in place of a harrison monument found.

A BCS record dated May 21, 1870 states "Re from the stump of Red Oak. Set a Rock 20,9,4 +. One under 5,3,3 +." A BCS tie card dated October 21, 2005 shows the corner as a harrison monument with no documentation of source.

This corner was excavated on October 19, 2009. Prior to excavation, a harrison monument was found at the surface. It is noted that this area is at the east edge of an abandoned railroad bed. The railroad bed is elevated on both sides of the road and clearly would have been elevated as it crossed the road prior to excavation work which smoothed the grade of the road. The probable area for the corner falls within the area which would have been fill when the bed crossed the road in elevated form. No monuments were found below the harrison or in the vicinity. The material cross-section of the road is 4 inches or asphalt over 10 inches of #53 road stone. Large #2 stone was found below this and extends to at least 20 inches deep. It is apparent that this area has been disturbed in the past and the stone bed of the road extends to below the depth at which at section corner stone would likely be found. The harrison monument was set in place of the previously existing harrison.

This corner was originally established as a wood post in June, 1820.



Kenneth E. Hedge
Kenneth E. Hedge, County Surveyor

James S. Swift
James S. Swift, IN LS 20200054
July 14, 2010

Center
Twp

Section 4
T18N, R1E

Section 9
T18N, R1E

SECTION CORNER RECORD

SE 100-300

BOONE COUNTY SURVEYOR'S OFFICE

State Plane grid coordinates NAD83 (NSRS 2007):

North: 1740760.62 East: 3140515.09 (U.S. survey feet)

Type of monument: Harrison, 4" disk 'Section Corner'

Depth: One inch below adjacent road surface

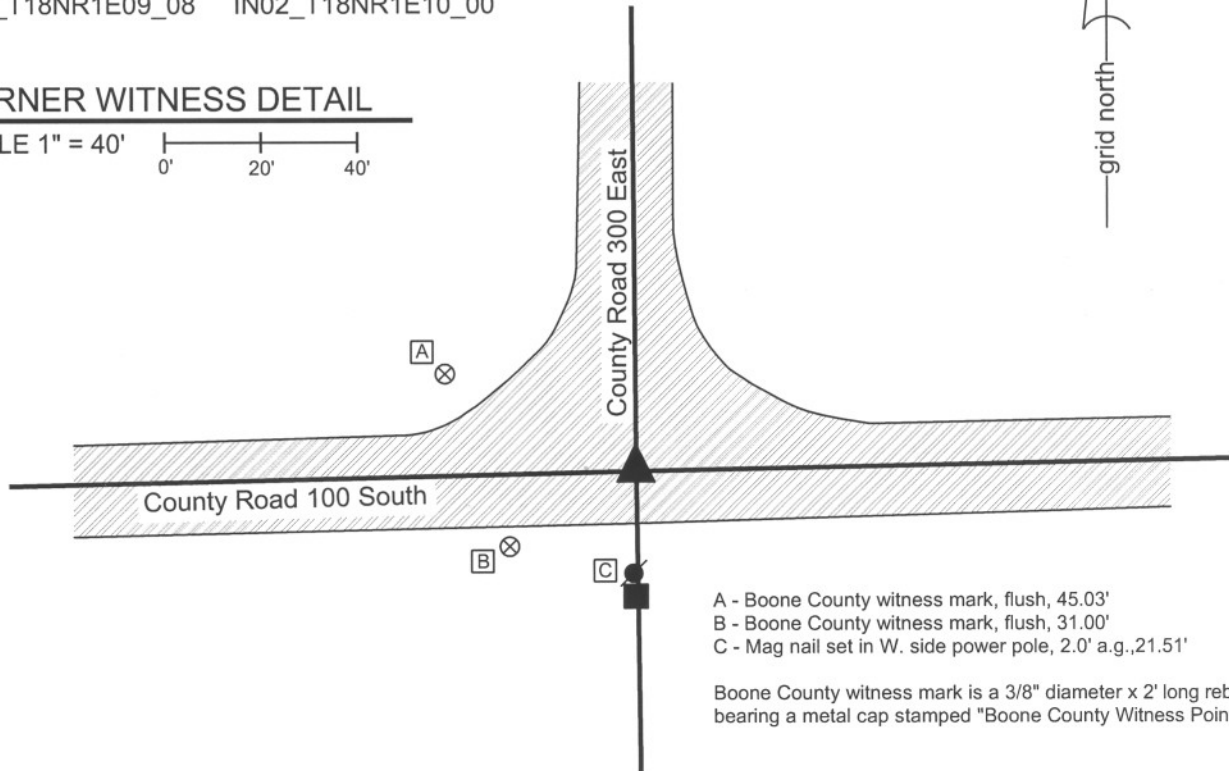
Indiana tie card references:

IN02_T18NR1E03_72 IN02_T18NR1E04_80

IN02_T18NR1E09_08 IN02_T18NR1E10_00

CORNER WITNESS DETAIL

SCALE 1" = 40'



- A - Boone County witness mark, flush, 45.03'
- B - Boone County witness mark, flush, 31.00'
- C - Mag nail set in W. side power pole, 2.0' a.g., 21.51'

Boone County witness mark is a 3/8" diameter x 2' long rebar bearing a metal cap stamped "Boone County Witness Point."

The harrison monument was set over the etched "+" on a stone found.

A BCS record of February 19, 1876 states "Reestablished at the intersection of lines. Set 2 rocks. Lower one 9,9,12 + on top. Upper one 7,12,14 + on top side." A BCS tie card dated October 1975 states "Stone found + rail 6". A BCS information sheet dated August 5, 1989 calls for a railroad rail found. A BCS tie card dated June 20, 1991 shows the corner as a railroad rail found. A BCS tie card dated October 15, 2005 shows the corner as a harrison monument with no documentation of source.

This corner was excavated on August 14, 2009. Prior to excavation a harrison monument was visible at the surface. Excavation revealed a railroad rail found at 12 inches deep. The harrison monument had been 0.2 feet west of the rail. A stone was found at 20 inches deep north and west of the rail. This stone was entirely within the road material and did not match the record descriptions. It was removed. Another stone was found directly below at 25 inches deep. This stone is 14 inches EW by 12 inches NS by 7 inches thick, matching the record description for the upper stone as described in the 1876 record. This stone was also removed. The record lower stone was found below it at 33 inches deep. This stone is 12 inches NS by 9 inches EW and fully embedded in the clay layer below the base of the road. The total height was not measured. A vague chiseled "+" was found at the top, high point of the stone, towards the southeast corner of the stone. The harrison monument was set over the chiseled "+". The old harrison monument had been 0.6 foot south and 0.2 foot east of the chiseled "+" on the stone.

This corner was originally established as a wood post in June, 1820.



Kenneth E. Hedge
 Kenneth E. Hedge, County Surveyor

James S. Swift
 James S. Swift, IN LS 20200054
 July 14, 2010

Center Township

Section 4 T18N, R1E	Section 3 T18N, R1E
Section 9 T18N, R1E	Section 10 T17N, R1E

PHOTOGRAPHIC DOCUMENTATION

Date of photography: August 14, 2009

View of the railroad rail as first exposed.



View of the upper most stone as first exposed.



View of the second stone found, being the upper stone described in the 1876 record.



View of the third stone found, being the lower stone described in the 1876 record.



Close-up of the lower record stone.



The lower record stone. The point of the chaining pin marks the etched mark on the stone.



For details and documentation, refer to related sheet "Section Corner Record."