

# SECTION CORNER RECORD

SE 600-800

## BOONE COUNTY SURVEYOR'S OFFICE

State Plane grid coordinates NAD83 (NSRS 2007):

Corner 1: North: 1714913.62 East: 3167460.82 (U.S. survey feet)  
 Corner 2: North: 1714919.27 East: 3167654.12 (U.S. survey feet)

Corner 1:

Type of monument: Calculated position, no monument set.

Corner 2:

Type of monument: Harrison, 4" disk 'Section Corner'

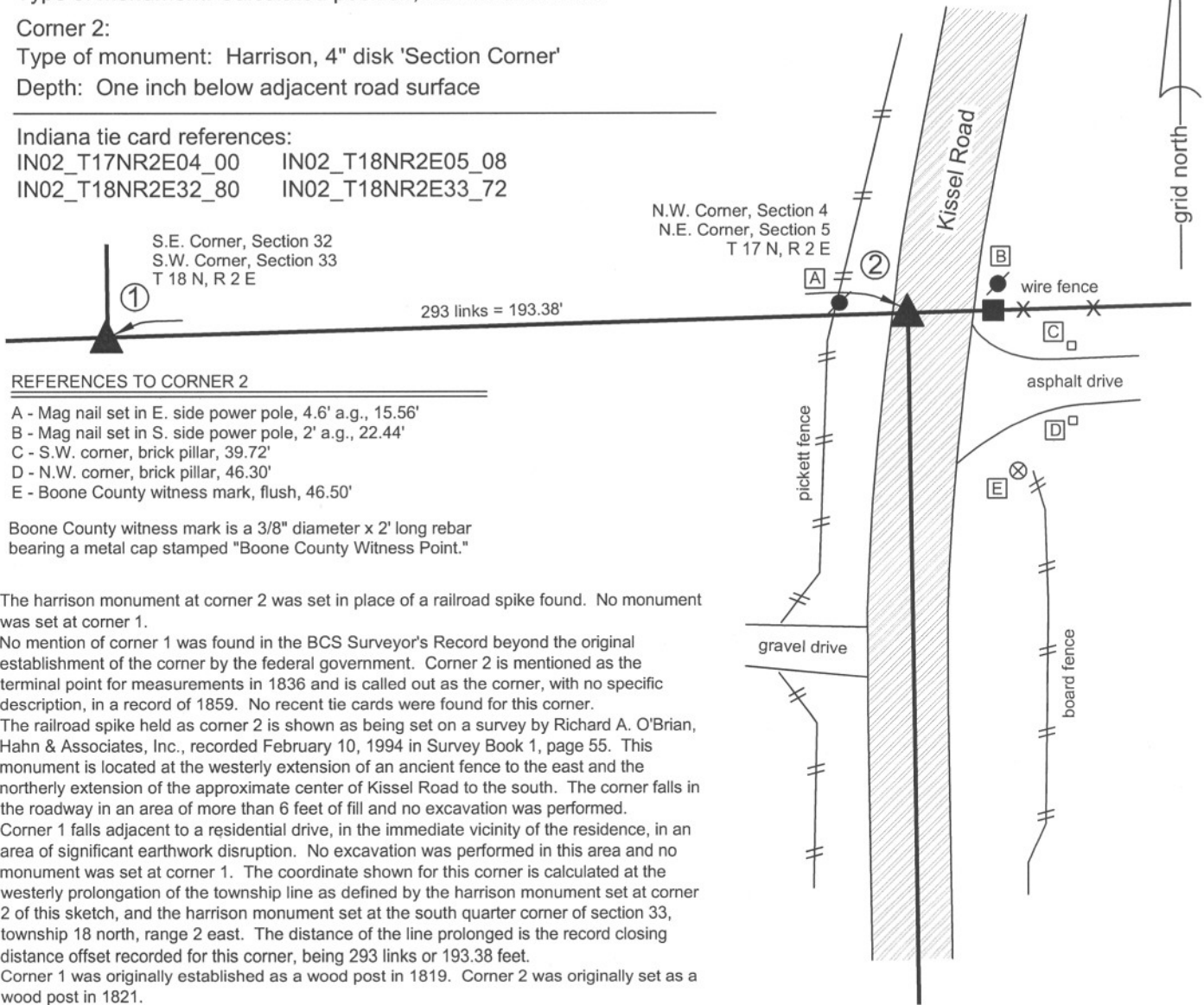
Depth: One inch below adjacent road surface

Indiana tie card references:

IN02\_T17NR2E04\_00 IN02\_T18NR2E05\_08  
 IN02\_T18NR2E32\_80 IN02\_T18NR2E33\_72

### CORNER WITNESS DETAIL

SCALE 1" = 40'



#### REFERENCES TO CORNER 2

- A - Mag nail set in E. side power pole, 4.6' a.g., 15.56'
- B - Mag nail set in S. side power pole, 2' a.g., 22.44'
- C - S.W. corner, brick pillar, 39.72'
- D - N.W. corner, brick pillar, 46.30'
- E - Boone County witness mark, flush, 46.50'

Boone County witness mark is a 3/8" diameter x 2' long rebar bearing a metal cap stamped "Boone County Witness Point."

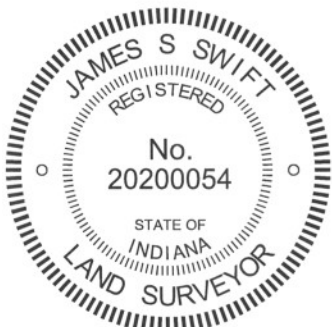
The harrison monument at corner 2 was set in place of a railroad spike found. No monument was set at corner 1.

No mention of corner 1 was found in the BCS Surveyor's Record beyond the original establishment of the corner by the federal government. Corner 2 is mentioned as the terminal point for measurements in 1836 and is called out as the corner, with no specific description, in a record of 1859. No recent tie cards were found for this corner.

The railroad spike held as corner 2 is shown as being set on a survey by Richard A. O'Brian, Hahn & Associates, Inc., recorded February 10, 1994 in Survey Book 1, page 55. This monument is located at the westerly extension of an ancient fence to the east and the northerly extension of the approximate center of Kissel Road to the south. The corner falls in the roadway in an area of more than 6 feet of fill and no excavation was performed.

Corner 1 falls adjacent to a residential drive, in the immediate vicinity of the residence, in an area of significant earthwork disruption. No excavation was performed in this area and no monument was set at corner 1. The coordinate shown for this corner is calculated at the westerly prolongation of the township line as defined by the harrison monument set at corner 2 of this sketch, and the harrison monument set at the south quarter corner of section 33, township 18 north, range 2 east. The distance of the line prolonged is the record closing distance offset recorded for this corner, being 293 links or 193.38 feet.

Corner 1 was originally established as a wood post in 1819. Corner 2 was originally set as a wood post in 1821.



*Kenneth E. Hedge*  
 Kenneth E. Hedge, County Surveyor

*James S. Swift*  
 James S. Swift, IN LS 20200054  
 March 1, 2012

Eagle Township

Section 32 T18N, R2E	Section 33 T18N, R2E
Section 5 T17N, R2E	Section 4 T17N, R2E

# SECTION CORNER RECORD

SE 600-850

## BOONE COUNTY SURVEYOR'S OFFICE

State Plane grid coordinates NAD83 (2011):

Corner 1: North: 1714992.19 East: 3170145.24 (U.S. survey feet)

Corner 2: North: 1714995.69 East: 3170300.54 (U.S. survey feet)

Type of monument: Harrison, 4" disk 'Section Corner'

Depth: Two inches above adjacent ground

① S. 1/4 corner  
Section 33  
T 18 N, R 2 E

② N. 1/4 corner  
Section 4  
T 17 N, R 2 E

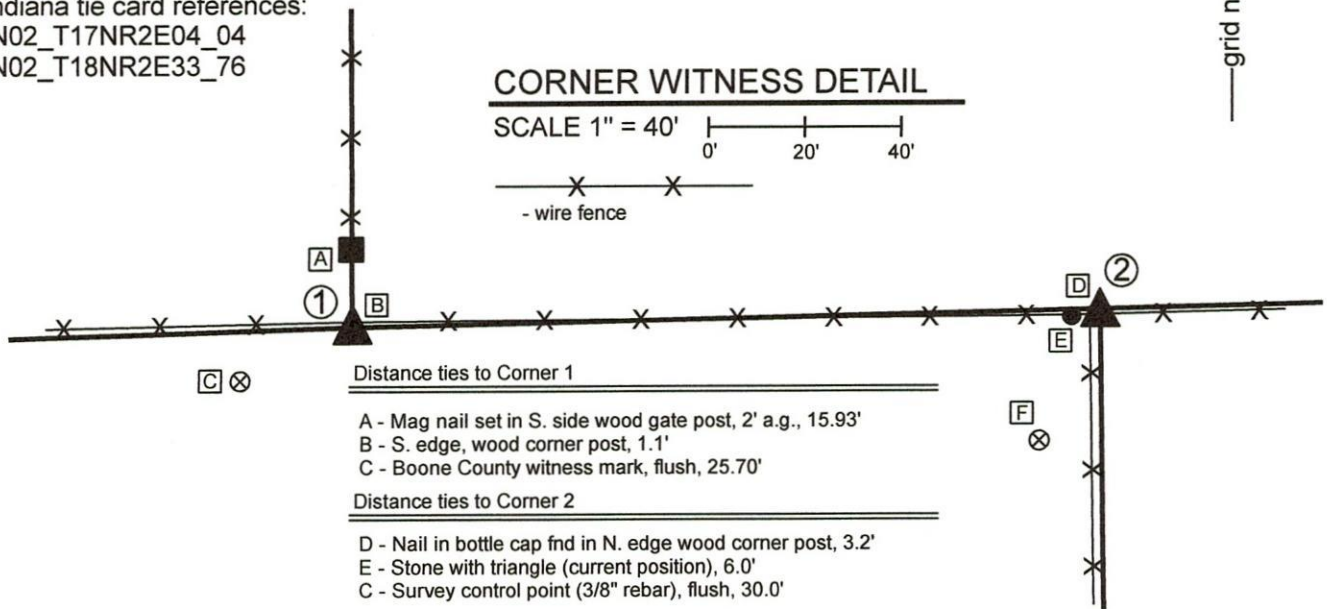
Distance between  
monuments: 155.34'



Indiana tie card references:

IN02\_T17NR2E04\_04

IN02\_T18NR2E33\_76



The Harrison monument at Corner 1 was set in place of a stone found. The Harrison monument at Corner 2 was set on the township line, directly north of the position of a stone referenced on a 1991 BCS tie card. Corner 1 was excavated and monumented on October 15, 2010. Numerous stones were found around a wood corner post at the intersection of old fences to the north, east and west. Most of the stones appeared to be randomly placed or bracing the wood post. However, one specific stone found one foot south of the post bore the characteristics of a section corner stone. It was clearly not bracing the post and was found to be vertical and oriented in cardinal directions with a clear and distinct high point, measuring 13 inches tall by 10 inches N-S by 7 inches E-W. The stone was removed and replaced with a Harrison monument in the position of the top, high point of the stone. Corner 2 is shown on a BCS tie card dated May 28, 1991 as being a stone with an etched triangle 2.7 feet east of a corner post. The tie card shows distance ties to PK nails set in 3 adjacent trees. The position of the stone was established by resection from the distance ties (metal detection of the PK nails in the trees) and this position fit precisely with the relative position of the wood post as shown on the 1991 tie card. However, it appears that the stone was moved between 1991 and 2001 and placed at the north edge of a tree, approximately 2.7 feet west of the corner post. A tie card which is believed to have been made by INDOT field crews dated April 18, 2001 shows the stone with the cut triangle, but clearly demonstrates it to be west of the corner post. The distance ties to two of the trees shown on the 1991 BCS tie card do not match the 1991 document. This altered position for the stone appears to be the same position held for the plat of The Enclave Section III (see Plat Book 12, page 53, Boone County Recorder, 11/01/2001) and the preliminary survey, recorded in Survey Book 4, pages 52-56. The plat and survey reference a stone found with cut "triangle" per Boone County Surveyor ties. The stone is believed to be the same monument, but the position shown on the plat and survey is not per the ties and does not agree with the 1991 BCS tie card. A Location Route Control Survey recorded in Survey Book 17, page 103, B.C. Recorder, shows Corner 2 as a calculated position, computed with respect to evidence with 2.7 feet uncertainty. The calculated position appears to hold a position on the township line, north of the post, being approximately equidistant east-west from the current position of the stone with triangle and the position of the stone as shown on the 1991 tie card. After careful review of the documentation and evidence, the position of the stone as shown on the 1991 tie card was held to define the position of Corner 2 in the east-west dimension. The final position for the corner was established on the township line as defined by Corner 1 and the standard corner 1/2 mile east (see BCS Corner SE 600-900), 2.25 feet north of the position of the stone as found in 1991. A Harrison monument was set at this position on February 3, 2020. Overall, minimal uncertainty is associated with the position of Corner 1 and up to 6 feet uncertainty east-west and 2.5 feet uncertainty north-south may be attributed to the position of Corner 2, due to the evident displacement of the stone from east of the corner post to a position west of the corner post.



*Kenneth E. Hedge*  
Kenneth E. Hedge, County Surveyor

*James S. Swift*  
James S. Swift, IN LS 20200054

March 3, 2020





# SECTION CORNER RECORD

SE 600-900

## BOONE COUNTY SURVEYOR'S OFFICE

State Plane grid coordinates NAD83 (NSRS 2007):

North: 1715051.65 East: 3172786.80 (U.S. survey feet) (standard corner)

North: 1715056.74 East: 3172956.22 (U.S. survey feet) (closing corner)

Type of monument: Harrison, 4" disk 'Section Corner'

Depth: Corner 1: flush. Corner 2: two inches above grade.

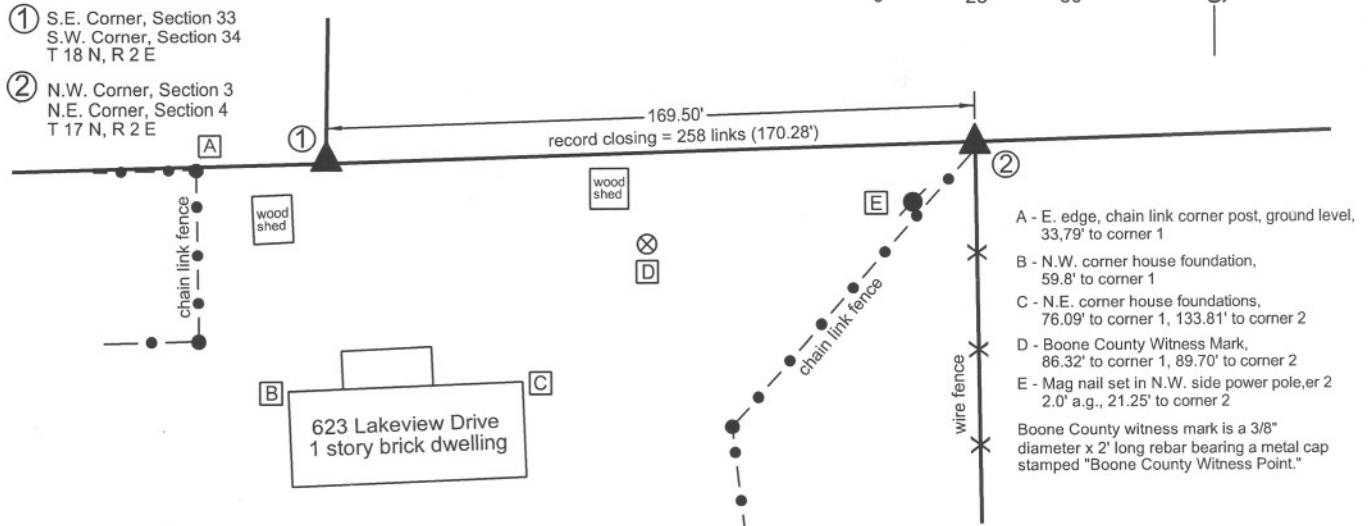
Indiana tie card references:

IN02\_T17NR2E03\_08 IN02\_T17NR2E04\_00

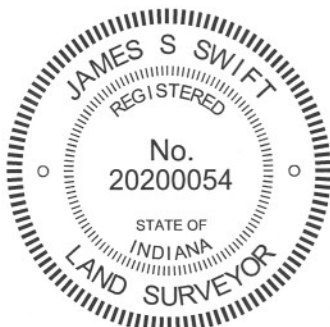
IN02\_T18NR2E33\_80 IN02\_T18NR2E34\_72

### CORNER WITNESS DETAIL

SCALE 1" = 50'



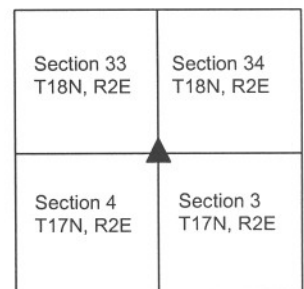
The harrison monument at the standard corner (corner 1) was set in place of a stone found. The harrison monument at the closing corner (corner 2) was set on line between corner 1 and the standard corner one-half mile east, and immediately north of an iron pipe held previously identified as the corner. Neither of these corners are specifically described in the BCS Surveyor's Record. Corner 1 is mentioned as the terminal point for measurements in records of 1834, 1883 and 1894. Corner 2 is mentioned as such in records of 1836, 1857, 1894. A BCS tie card dated May 23, 1991 shows the corner as a "suck rod" found on the south side of an 8x8 inch wood post. This "suck rod" has been held for many private surveys since, most noting it as an iron pipe. This corner was excavated on September 23, 2008. Prior to excavation, the "suck rod" was visible in the vicinity of corner 2, being a one-inch diameter iron pipe. The post referred to in the 1991 tie card was broken off, but the base of the post was still present in the ground. Excavation around the post yielded several rocks, none of which could be positively identified as being a specific corner stone and all of which appeared to be rocks set for the purposes of bracing the post. In the vicinity of corner 1, a steel fence post broken off at the ground was found with a magnetic locator. Excavation yielded remnants of a wood post immediately south of the steel post. At the southeast edge of the post remnants two stones were found on top of each other. The top stone was 9 inches tall by 6 inches E-W by 3 inches N-S. While this is somewhat small for a section corner stone, it bore the characteristics of a corner stone in its orientation, being vertical and oriented in cardinal directions. Another stone was found directly below, measuring 6x5x4 inches. Other rocks were not found around the remnants of the post. The two found stones did not appear to be brace rocks and did appear to be specific corner monuments. The stones were removed and the harrison monument was set in their place. The distance from corner 1, as so established and monumented to the iron pipe previously held as corner 2 is within one foot of the original closing distance. The pipe was at the south edge of the base of the old corner post, with no specific documentation found for this placement. The township line, connected from corner 1 to the standard corner one-half mile east (see SE-600-950) falls on the north side of the post. Given the previous references to the pipe or suck rod as the corner, the pipe was held to define the E-W position of the corner. The township line was held to define the N-S position and corner 2 was established on the township line, immediately north of the iron pipe. This point is 1.25 feet north of the position of the iron pipe (removed) and at the north edge of the base of the old 8x8 inch wood post. A harrison monument was set at this computed position for corner 2 on September 18, 2009. The standard corner was originally established as a wood post in 1819 and another wood post was set at the closing corner in 1821.



*Kenneth E. Hedge*  
Kenneth E. Hedge, County Surveyor

*James S. Swift*  
James S. Swift, IN LS 20200054  
July 14, 2010, Revised March 1, 2012

Eagle Township



PHOTOGRAPHIC DOCUMENTATION

Date of photography: September 2008 & September 2009

Corner 2 as found, showing the pipe and metal posts to the south. The above ground portion of the wood post is lying on the adjacent ground.



Corner 2 being excavated, showing the pipe, metal posts to the south, the in ground portion of the wood post, and a rock found on the north side of the post, presumably a brace rock.



The top stone found at corner 1.



The lower stone found at corner 2 and the remains of the old wood post found adjacent to the two stones.



For details and documentation, refer to related sheet "Section Corner Record."



# SECTION CORNER RECORD

SE 650-800

## BOONE COUNTY SURVEYOR'S OFFICE

State Plane grid coordinates NAD83 (NSRS 2007):

North: 1711942.52 East: 3167695.46 (U.S. survey feet)

Type of monument: Harrison, 4" disk 'Section Corner'

Depth: Flush with adjacent road surface

Indiana tie card references:

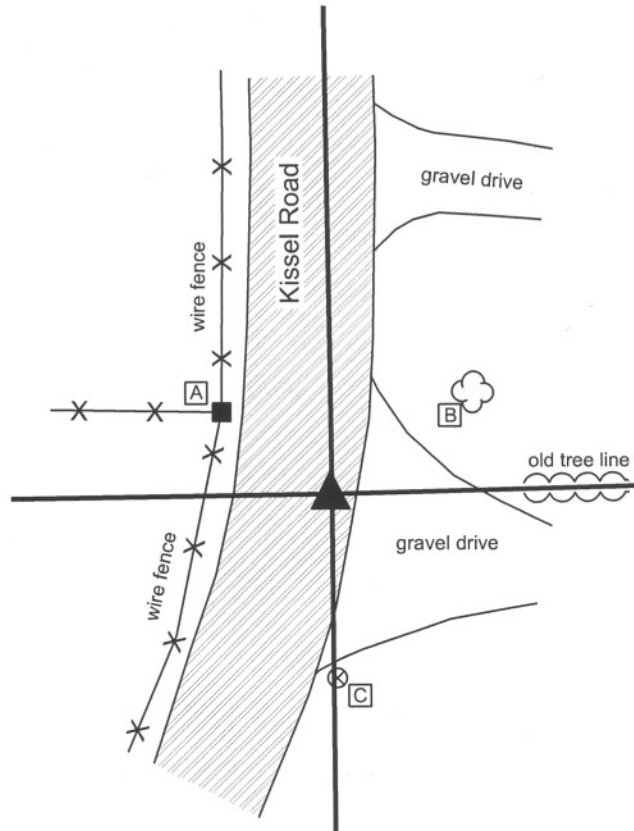
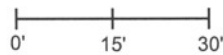
IN02\_T17NR2E04\_36

IN02\_T17NR2E05\_44



### CORNER WITNESS DETAIL

SCALE 1" = 30'



- A - Nail in bottle cap in N.E. corner wood post, 21.5'
- B - Southwest edge, 20" diameter maple, 24.6'
- C - Boone County witness mark, flush 28.67'

Boone County witness mark is a 3/8" diameter x 2' long rebar bearing a metal cap stamped "Boone County Witness Point."

The harrison monument was set directly over a chisled hole in a stone found. A BCS record of May, 1859 shows this corner and ties to bearing trees. It does not specifically state that a stone is present, which is similar to other BCS records prior to 1860. The stone is located towards the east edge of the roadway at the southerly extension of the center of the road to the north. The stone falls on the the extension of a line offset 1 rod (16.5 feet) east of the old right-of-way fence on the west side of the road, north of the corner. The stone measures 12 inches E-W by 7 inches N-S at the top, 11 inches below the road surface, embedded in the clay at the bottom of the road bed. The harrison monument was truncated at approximately 10 inches and set in concrete over the stone.

A BCS tie card March 6, 1991 shows a position for the corner with ties but does state the monument. Prior to excavation a road nail was found slightly below grade which agreed with the 1991 reference ties. This nail was 1.1 feet North and 1.8 feet west of the stone. Excavation revealed that this nail was directly over a one inch i.d. pipe. Another pipe, being 1/2 inch i.d. was also found 0.2 feet south and 0.1 foot west of the first pipe. Both pipes were removed during excavation.

The original monument at this corner was a wood post set in July, 1821.



*Kenneth E. Hedge*  
Kenneth E. Hedge, County Surveyor

*James S. Swift*  
James S. Swift, IN LS 20200054  
March 11, 2009

Eagle Township

Section 5 T17N, R2E	▲	Section 4 T17N, R2E
------------------------	---	------------------------

PHOTOGRAPHIC DOCUMENTATION

Date of photography: October 30, 2007

Photograph of the found stone. The photo is oriented with north towards the top of the page. The top of the stone is 11 inches below the surface of the road and measures 12 inches (E-W) by 7 inches (N-S). A distinct indentation of the top, center of the stone appears to be chiseled by humans. A Harrison monument was broken off and set directly above the chiseled hole.



Close up of the stone, with the tip of a chaining pin placed on the chiseled hole.





# SECTION CORNER RECORD

## BOONE COUNTY SURVEYOR'S OFFICE

SE 650-900

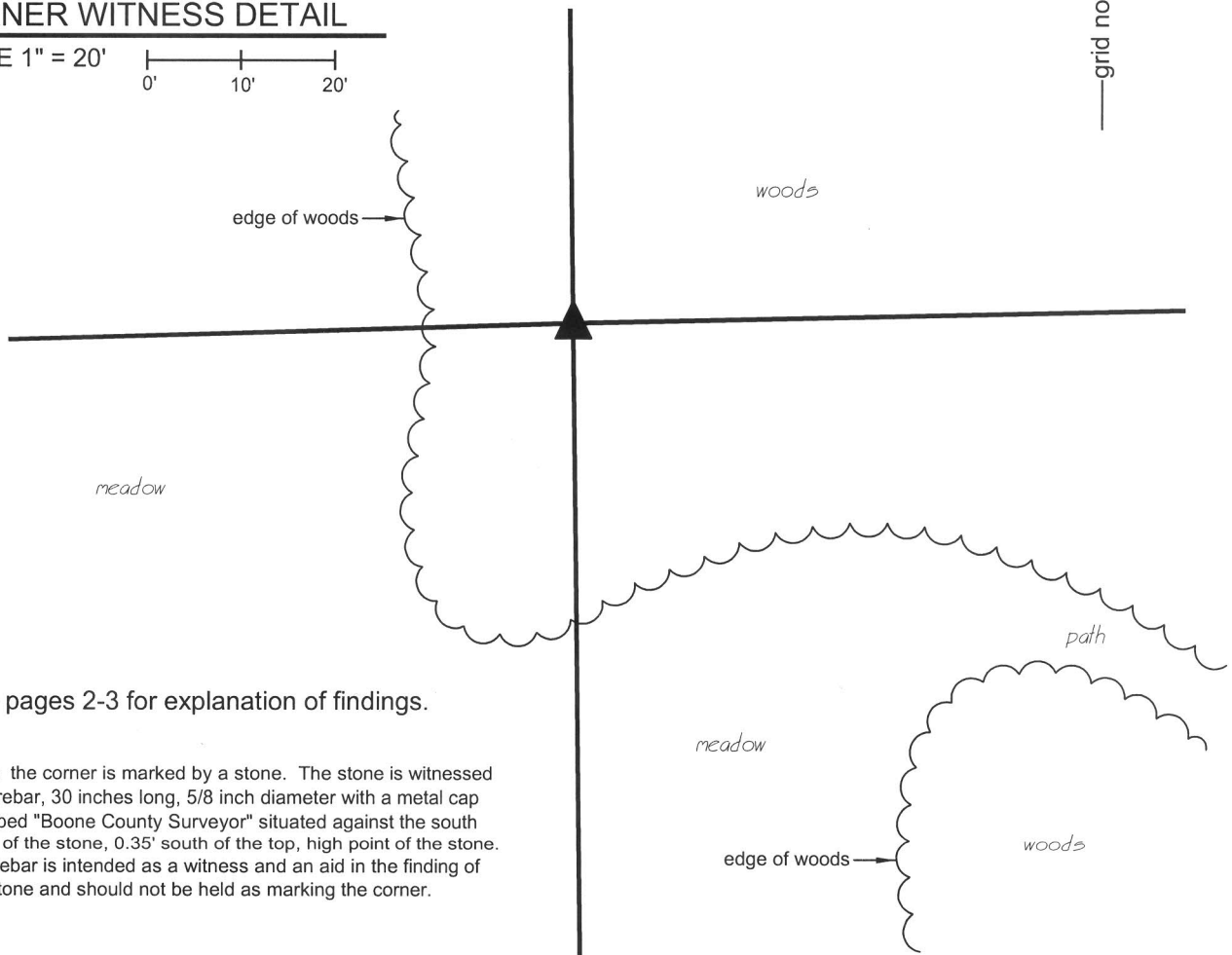
State Plane grid coordinates NAD83 (CORS96):  
North: 1712095.76 East: 3172990.96 (U.S. survey feet)

Type of monument: Stone, witnessed by capped rebar.  
Depth: exposed but 2" below surrounding ground.

Indiana tie card references:  
IN02\_T17NR2E03\_36  
IN02\_T17NR2E04\_44

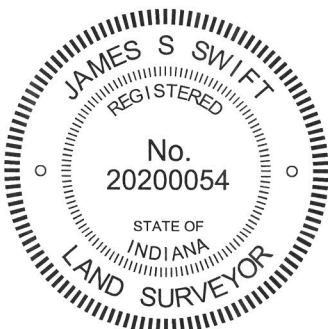
### CORNER WITNESS DETAIL

SCALE 1" = 20'




See pages 2-3 for explanation of findings.

Note: the corner is marked by a stone. The stone is witnessed by a rebar, 30 inches long, 5/8 inch diameter with a metal cap stamped "Boone County Surveyor" situated against the south edge of the stone, 0.35' south of the top, high point of the stone. The rebar is intended as a witness and an aid in the finding of the stone and should not be held as marking the corner.

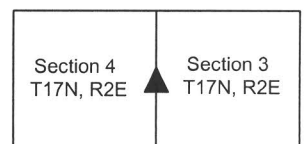


  
Kenneth E. Hedge, County Surveyor

  
James S. Swift, IN LS 20200054

February 5, 2015 Page 1 of 3

Eagle Township



# SECTION CORNER RECORD

SE 650-900

## BOONE COUNTY SURVEYOR'S OFFICE

This corner was originally established as a wood post between July 2 & July 5, 1821. Section 3, township 17 north, range 2 east was subdivided by the Boone County Surveyor in May 1836. During this survey the line between the subject corner and the northwest corner of section 3 was measured and the northwest corner of the south half of the northwest quarter was established. Section 4 was subdivided by the Boone County Surveyor in 1836 and 1842 and the subject corner is mentioned as a terminal point for measurements, though no monument was specifically described, in these records.


The 1939 aerial photos clearly show evidence of occupation along the lines bearing east, west and north from this corner. More recent photos show less clear evidence of occupation, as the woods in this area were allowed to grow and obscure the distinct patterns of occupation.

Several surveys of land which is not adjacent to this corner, but is tied to lines dependent upon the corner, were performed in the second half of the 20th century. The Spring Hills subdivision, subdividing a part of the southeast quarter of the northwest quarter of section 3 was platted in 1961. This plat shows the south line of the subdivision to be a portion of the south line of the northwest quarter, extending 910.72 feet east from the southwest corner of the S.E.  $\frac{1}{4}$  of the N.W.  $\frac{1}{4}$ . The plat is signed by P.W. Moore, President of P.E. Middleton, Co., Inc. Engineers. The Thornhill Subdivisions in the east half of the southwest quarter of section 3 were platted in the late 1980s and early 1990s. Several of the plats of the various sections of the Thornhill Subdivision show diagrams of the section which clearly indicate that the north line of the east half of the southwest quarter was established per the line previously established by the Spring Hills Plat, showing a distance of 909.99 feet between a  $\frac{3}{8}$  inch iron pin found at the S.W. corner of the S.E.  $\frac{1}{4}$  of the N.W.  $\frac{1}{4}$  and a  $\frac{3}{8}$  inch iron pin found at the southeast corner of the Spring Hills Subdivisions. With respect to the west quarter corner of section 3 the diagrams specifically state "NO FENCES NOTHING FND. N.W. COR. S.W.  $\frac{1}{4}$  SEC. 3-17-2 (CALCULATED) 5/8" REBAR SET." The diagrams indicate that the 909.99 foot line was extended west 1325.26 feet to a calculated corner. These diagrams also indicate that the north line of the west half of the southwest quarter is 15.64 feet shorter than the north line of the east half of the southwest quarter. These plats were signed by James E. Dankert, President of Paul I. Cripe, Inc. A 1992 survey by Jerry L. Carter, of Fink Roberts & Petrie, Inc, recorded in Survey Book 1, page 45 in the Boone County Recorders Office exactly replicates the diagrams from the Thornhill Subdivisions, including the reference to the rebar set. A 2005 survey by Mark Joseph Duffy of Weihe Engineers, Inc., recorded in Survey Book 9, page 13 holds the corner as established per the Thornhill Plats. This survey represents the preliminary boundary survey for the Oldfield Subdivision. A 2001 survey by Gary R. Kent of The Schneider Corporation, recorded in Survey Book 4, pages 52-56, holds a different position for the corner than the Thornhill Plats. This survey is of land in the east half of section 4 and represents the preliminary boundary survey to the Enclave Subdivision. The Kent survey established the subject corner at a proportional position relative to the northeast and southeast corners of section 4. This position falls approximately 10.3 feet north of the rebar set in association with the Thornhill Plats. No monument is shown as being set at the corner. The surveyor's report indicates that by holding this position, the location of a railroad spike at the southeast corner of the north half of the northeast quarter, section 4, fits within 0.9 of a foot with a proportional distance. The report later notes that the proportional distance was calculated proportional to the original acreage. The Kent survey holds a single straight line for the south line of the northwest quarter, from a railroad spike found at the accepted center of section 4 to the calculated proportional position for the east quarter corner. The survey shows the south line of the S.W.  $\frac{1}{4}$ , N.E.  $\frac{1}{4}$  to be approximately 13 feet longer than the south line of the S.E.  $\frac{1}{4}$ , N.E.  $\frac{1}{4}$  of section 4. It is noted that the survey shows that a fence near the north line of the S.W.  $\frac{1}{4}$ , N.E.  $\frac{1}{4}$  diverges from the surveyed line. The fence is shown to fall along the surveyed line near the west end of the line but is shown as being up to 7 feet north of the line near the east end of the line. The survey shows that a  $\frac{1}{2}$  inch iron pipe was found 7.0 feet north of the southeast corner, S.W.  $\frac{1}{4}$ , N.E.  $\frac{1}{4}$  and a stone was found 7.5 feet north and 0.9 east of that corner.

It is noted that the recorded surveys and plats in both sections 3 and 4 hold the east-west distances for the half quarter sections per physical evidence rather than mathematical splits. However, in all cases, the surveys and plats hold straight east-west lines for the full half-mile lines and do not bend the lines at the quarter-quarter corners. Hence, the straight half mile line was held for direction although physical evidence, rather than mathematical splits, were held as controlling the distances along the lines.

Physical reconnaissance of the existing conditions in April 2013 yielded the following found evidence and observations. A 5/8 inch rebar was found at the position for the subject corner as shown on the Thornhill Plats. A concrete monument was found at the southeast corner of the Spring Hills plat, said monument shown as being set as part of Thornhill Section 1. A wood post at or near the northwest corner of Thornhill Section 1 and the southwest corner of Spring Hills was found at the easterly terminus of a short E-W fence. The post appears to have once had fencing to the south which is currently cut off. A 1/2 inch rebar was at the east edge of the post and several stones were found around the post. This post is near the position of the southwest corner of the S.E.  $\frac{1}{4}$  of the N.W.  $\frac{1}{4}$  shown on the Thornhill Plats, as computed relative to centerline control found on Mulsanne Drive. An old wood post with fence to the north and east was found approximately 458 feet east of the subject corner (W.  $\frac{1}{4}$  corner, section 3). An old wood post with fence to the south and west and fencing cut-off to the north was found approximately 662 feet west of the subject corner. An old wood post with fence to the west and fencing cut-off to the north and south was found at the historically occupied S.W. corner of the E.  $\frac{1}{2}$ , N.E.  $\frac{1}{4}$  of Section 4. An iron pipe is located at the southeast edge of this post. An old wood post with fence to the south, east and west was found approximately 160 feet west of said SW corner of the E.  $\frac{1}{2}$ , N.E.  $\frac{1}{4}$  of Section 4, near the northeast corner of the Enclave Subdivision.

  
Kenneth E. Hedge, County Surveyor

  
James S. Swift, IN LS 20200054



# SECTION CORNER RECORD

SE 650-900

## BOONE COUNTY SURVEYOR'S OFFICE


It was observed that a distinct pattern exists with respect to the old fences providing evidence of the east-west lines in both sections 3 and 4. A calculated position was established by prolonging a line from the old post found near the northwest corner of the Thornhill subdivision through the post found 458 feet east of the subject corner to the same east-west position as the 5/8 inch rebar shown as marking the subject corner on the Thornhill plats. This calculated position fit very well with a line extended from the center of section 4 through the post found 662 feet west of the subject corner. Careful investigation of this calculated position yielded the observation that, although actual fencing is not currently present in this area, physical evidence of the corner is present. A distinct line of trees, all of which appear to be older than the surrounding trees can be found bearing east from this point. The trees, including a 20 inch Hackberry, 24 inch Hackberry and 5 walnuts of approximately 15 inches diameter, are located along a line extending approximately 150 east feet from the corner. Previous surveyors may not have noticed this line of trees due to significant underbrush and other, smaller trees in the area. Excavation in the immediate vicinity of this calculated position yielded the discovery of a stone which has several characteristics in common with stones found marking other section corners in this area. Fragments of wood which bear the distinct characteristics of the base of an old wood post were found adjacent to and immediately south of the stone. The stone itself measures 12 inches tall by 12 inches east-west by 9 inches north south and is upright with the south side being flat and vertical. The stone has a distinct high point at the top. Other rocks were not found in the vicinity. The stone is 20.8 feet north and 1.7 feet west of the 5/8 inch rebar noted on the Thornhill plats and approximately 10.5 feet north of the of proportional position for the corner as calculated on the Kent survey. The post at or near the S.W. corner of the E. 1/2, N.E. 1/4 of Section 4 falls 2 feet north of a straight line connecting the found stone and the monumented center of section 4.

It is noted that the two previously held positions for this corner were both based on the premise that no local evidence of the corner existed. The 1939 aerial photos clearly indicate that physical evidence of the corner did exist at that time. Careful analysis by this office yielded ample physical evidence to estimate a realistic position for the corner and excavation yielded a stone found at that estimated position. The stone fits the characteristics of corner stones found throughout the county and was found adjacent to evidence of the base of an old post. Analysis of the position of the stone relative to other corners and pertinent evidence yields the following observations: The stone fits well with the evidence of fences from the corner to 1/4 mile east and from the corner to 1/2 mile west. The stone is at the westerly end of the distinct line of trees, as noted above. The stone is 0.3 of a foot east of a straight line connecting the S.W. and N.W. corners of section 3, as previously established by this office. The previously determined proportional position for the corner, as based on the acreage shown on the original plat, established a position for the corner which is approximately 10 feet north of the rebar held by numerous surveys. This position does not fit with the physical evidence of the corner and dependent lines found in the field, though it does fit better with the physical evidence than does the position of the rebar. Given the presence of the physical evidence of the corner, a proportional solution is not considered the best solution for the corner. However, it is noted that there are two other mathematical solutions for the corner, one which is a proportional determination relative to the measurements shown on the original township plat and the other being a proportional determination relative to the direct measurements shown on the 1836 County Surveyor subdivision of section 3. Both actually work well with the relative positions of the stone found at the subject corner with the northwest and southwest corners of section 3 as previously established by this office and the position of a railroad spike in the center of Oak Street (formerly S.R. 334) which has been accepted on numerous surveys as marking the S.W. corner of the N. 1/2 of the N.W. 1/4 of section 3. Given the presence of the stone, the adjacent post, the physical evidence of the dependent lines and the harmonization of this position with the measurements made by the original federal surveyors and the County Surveyor soon thereafter, minimal uncertainty is attached to the position of the stone as representing the best available evidence of the corner. With respect to previous surveys, however, uncertainties of up to 10.5 feet must be attached to the position of the corner relative to the Kent survey and uncertainties of up to 21 feet must be attached to the position of the corner relative to the other known surveys and plats.

The stone was accepted as providing the best evidence of the corner and was held as marking the corner. A 5/8 inch rebar with a metal cap stamped 'Boone County Surveyor' was set at the south edge of the stone, 0.35 feet south of the high point of the stone. The rebar is intended as a witness monument and an aid to finding the stone and should not be construed as marking the corner. An orange fiberglass lathe was also set near the corner as a witness.

It is noted that the previously accepted position of the southwest corner of the east half of the northwest quarter of section 3, as shown on the plats of Spring Hills and Thornhill and marked or witnessed by an old wood post is 11 feet south of a straight line connecting the aforementioned stone and the position of the center of the section held on the Thornhill plats and is 10.3 feet south of a straight line connecting the stone and a railroad spike marking the east quarter corner of section 3. It is also noted that this point is 7.3 feet west of a calculated midpoint between the center of section 3, per the Thornhill plats, and the stone accepted herein as marking the west quarter corner. Given the substantial history of surveys tied to that corner, it is strongly recommended that future surveys hold the position shown on the Thornhill plats as marking the southwest corner of the east half of the northwest quarter of section 3 and treat the south line of said northwest quarter as containing a bend at this point.

  
Kenneth E. Hedge, County Surveyor

  
James S. Swift, IN LS 20200054



PHOTOGRAPHIC DOCUMENTATION

Date of photography: April 15 & May 15, 2013

The tree line to the east of the corner (April 15).



The general area of the corner prior to excavation.



The found stone with fragments of wood which fit the character of those from an old post (4/15).



The stone, rebar and witness lathe on May 15.



The stone on May 15.



For details and documentation, refer to related sheet "Section Corner Record."



# SECTION CORNER RECORD

SE 700-800

## BOONE COUNTY SURVEYOR'S OFFICE

State Plane grid coordinates NAD83 (NSRS 2007):  
North: 1709301.80 East: 3167716.65 (U.S. survey feet)

Type of monument: Harrison, 4" disk 'Section Corner'  
Depth: Flush with road surface

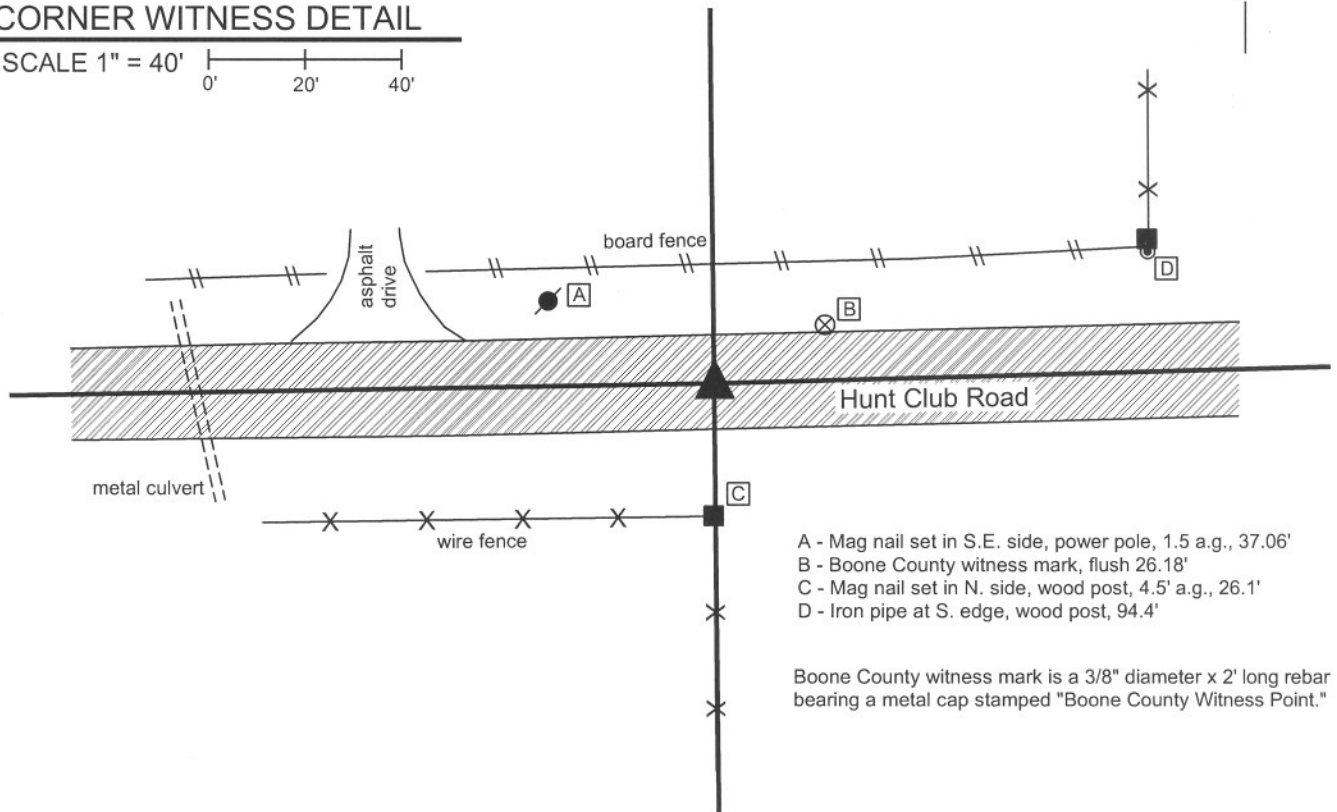
Indiana tie card references:  
IN02\_T17NR2E04\_72 IN02\_T17NR2E05\_80  
IN02\_T17NR2E08\_08 IN02\_T17NR2E09\_00



### CORNER WITNESS DETAIL

SCALE 1" = 40'

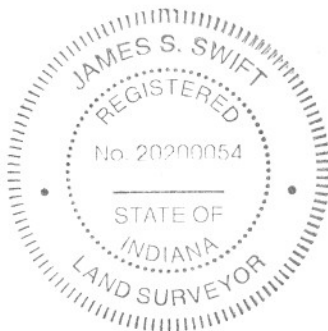
0' 20' 40'



- A - Mag nail set in S.E. side, power pole, 1.5 a.g., 37.06'
- B - Boone County witness mark, flush 26.18'
- C - Mag nail set in N. side, wood post, 4.5' a.g., 26.1'
- D - Iron pipe at S. edge, wood post, 94.4'

Boone County witness mark is a 3/8" diameter x 2' long rebar bearing a metal cap stamped "Boone County Witness Point."

The Harrison monument was set directly over a railroad rail found on end, the top of which is 13 inches below the surface of the road. The railroad rail is shown as being set in April, 1970. A P.K. nail was found above the rail and was removed in the process of setting the Harrison monument. No reference to a stone was found in the county records. This is an area of substantial fill for the roadway and significant excavation was not performed at this site. This corner was originally established in July, 1821.



*Kenneth E. Hedge*  
Kenneth E. Hedge, County Surveyor

*J. S. Swift*  
James S. Swift, IN LS 20200054  
December 21, 2007

Eagle Township

Section 5 T17N, R2E	Section 4 T17N, R2E
Section 8 T17N, R2E	Section 9 T17N, R2E

# SECTION CORNER RECORD

SE 700-850

## BOONE COUNTY SURVEYOR'S OFFICE

State Plane grid coordinates NAD83 (NSRS 2007):  
North: 1709371.51 East: 3170363.57 (U.S. survey feet)

Type of monument: Harrison, 4" disk 'Section Corner'  
Depth: 0.1' below adjacent road surface

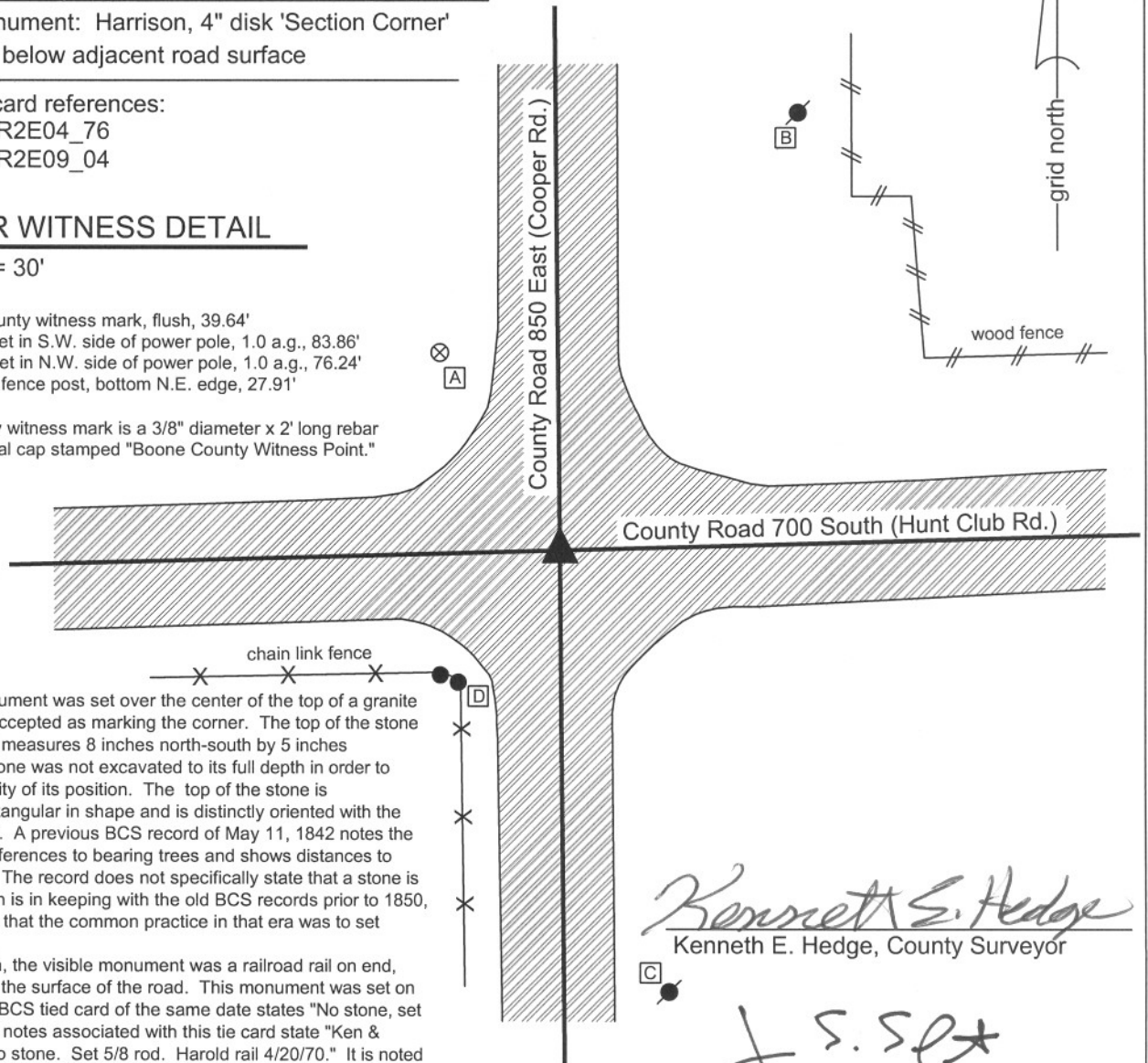
Indiana tie card references:  
IN02\_T17NR2E04\_76  
IN02\_T17NR2E09\_04

### CORNER WITNESS DETAIL

SCALE 1" = 30'

- A - Boone County witness mark, flush, 39.64'
- B - Mag nail set in S.W. side of power pole, 1.0 a.g., 83.86'
- C - Mag nail set in N.W. side of power pole, 1.0 a.g., 76.24'
- D - Chain link fence post, bottom N.E. edge, 27.91'

Boone County witness mark is a 3/8" diameter x 2' long rebar bearing a metal cap stamped "Boone County Witness Point."



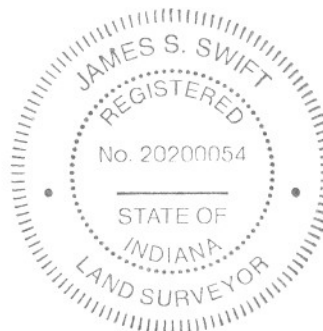
The Harrison monument was set over the center of the top of a granite stone found and accepted as marking the corner. The top of the stone is 2 feet deep and measures 8 inches north-south by 5 inches east-west. The stone was not excavated to its full depth in order to maintain the stability of its position. The top of the stone is approximately rectangular in shape and is distinctly oriented with the cardinal directions. A previous BCS record of May 11, 1842 notes the corner, calls for references to bearing trees and shows distances to adjacent corners. The record does not specifically state that a stone is at the corner which is in keeping with the old BCS records prior to 1850, though it is known that the common practice in that era was to set stones at corners.

Prior to excavation, the visible monument was a railroad rail on end, nine inches below the surface of the road. This monument was set on April 20, 1970. A BCS tied card of the same date states "No stone, set 5/8 rail." The field notes associated with this tie card state "Ken & Harold, 2/10/70, no stone. Set 5/8 rod. Harold rail 4/20/70." It is noted that the rail was very close to the stone, with the center of the rail driven approximately 8 1/2 inches north and west of the top, center of the stone. Inspection of the dirt on the south edge of the hole, adjacent to the stone yields the evidence that at least 5 inches of undisturbed dirt was above the stone, indicating that the 1970 excavation did not extend to the depth of the stone. The rail was driven next to the stone, barely missing the northwest edge. The written evidence on the field notes of "no stone, set 5/8 rod" indicate that the rod, and subsequently rail, were established due to the lack of presence of a stone. Clearly a stone was present, but not found.

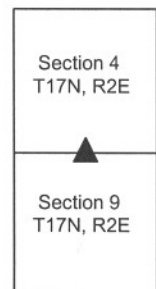
The stone is accepted as the best evidence of the original location of the corner and was held and monumented as marking the corner. The railroad rail was removed during excavation. It is noted that the center of mass of the top of the rail, being the approximate center of the thin portion of the rail between the rail and the base, was 0.5' N and 0.5' W of the top, center of the stone. The railroad rail is known to have been held as the corner for numerous surveys in the area and its position is noted to facilitate retracement of those surveys which are tied to it. A 1/2 inch I.D. iron pipe was also found 1.2' N and 0.5' W of the stone. No documentation was found for this pipe, which was also removed during excavation.

*Kenneth E. Hedge*  
Kenneth E. Hedge, County Surveyor

*J. S. Swift*  
James S. Swift, IN LS 20200054  
February 1, 2008



Eagle Township



## PHOTOGRAPHIC DOCUMENTATION

Date of photography: 11/07/2007

Photograph of the found stone. The photo is taken from the north side of the hole, looking down and south. The top of the stone is 24 inches below the surface of the road and measures 8 inches (N-S) by 5 inches (E-W). A Harrison monument was set directly above the top, center of the stone.



Photograph of the found stone, washed. The vertical rod shown next to the stone represents the reconstructed position the 30 inch length of railroad rail which was set in 1970 and removed during excavation of the stone. The rail was approximately 8 inches north and west of the stone. The horizontal, intersecting strings shown represent the means by which the position of the rail was reconstructed.



Side view from the north, looking over the stone to the south edge of the hole. The horizontal rod is placed along the line between undisturbed base material and the loose fill material found in most of the hole. At least 5 inches of undisturbed base existed above and immediately south of the stone. It is apparent that the 1970 excavation did not extend to the depth of the stone and that the reference in the previous record of "no stone" was not correct.





# SECTION CORNER RECORD

SE 700-900

## BOONE COUNTY SURVEYOR'S OFFICE

State Plane grid coordinates NAD83 (NSRS 2007):  
North: 1709444.34 East: 3173021.29 (U.S. survey feet)

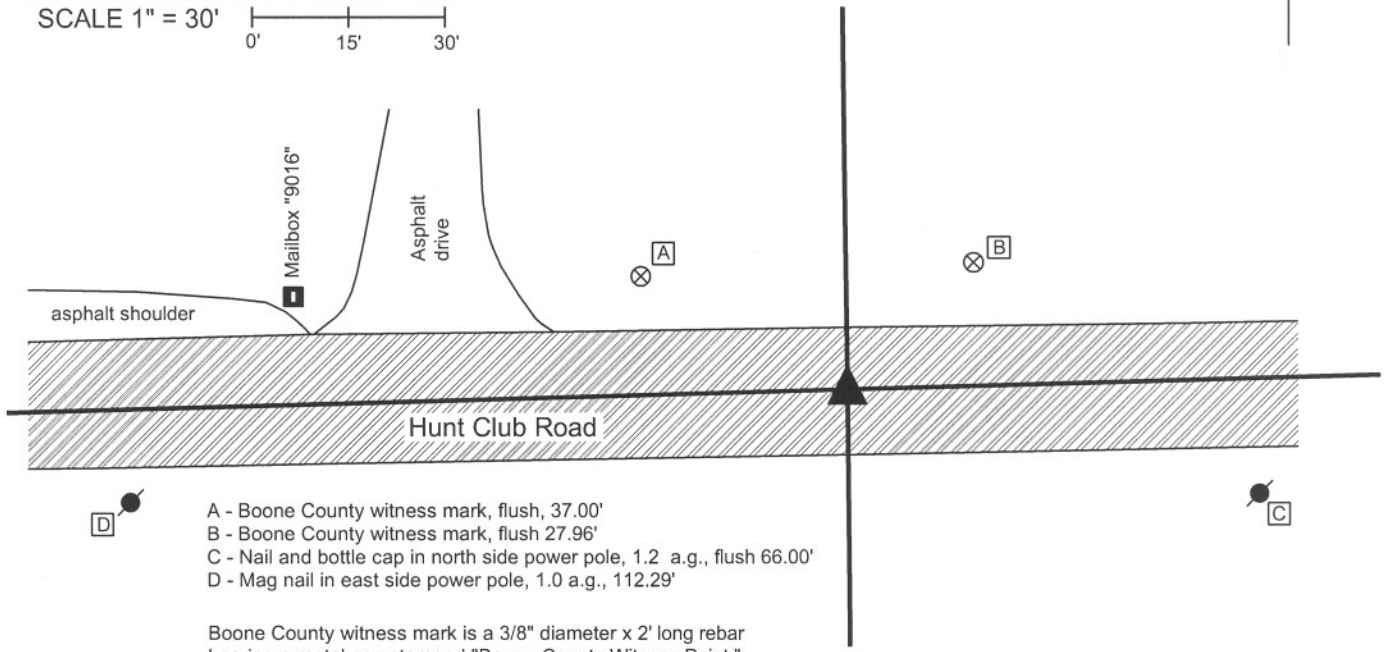
Type of monument: Harrison, 4" disk 'Section Corner'  
Depth: 1" below road surface

Indiana tie card references:  
IN02\_T17NR2E03\_72 IN02\_T17NR2E04\_80  
IN02\_T17NR2E09\_08 IN02\_T17NR2E10\_00



### CORNER WITNESS DETAIL

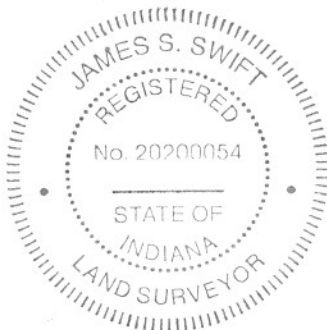
SCALE 1" = 30'  
0' 15' 30'



- A - Boone County witness mark, flush, 37.00'
- B - Boone County witness mark, flush 27.96'
- C - Nail and bottle cap in north side power pole, 1.2' a.g., flush 66.00'
- D - Mag nail in east side power pole, 1.0 a.g., 112.29'

Boone County witness mark is a 3/8" diameter x 2' long rebar bearing a metal cap stamped "Boone County Witness Point."

The Harrison monument was set in place of a railroad rail found, the top of which was 4 inches below the surface of the road. A previous tie card indicates that the rail was set in place of a stone found, April 1970. A black igneous stone was found during excavation, approximately 1.8 feet deep and 1.2 feet south and west of the rail. It is not clear whether this is the same stone which was previously found and displaced by the rail or whether this is a different stone. No record prior to 1970 was found for a stone at this corner. A 1 inch diameter iron pipe with a nail driven in the top was found situated against the north side of the rail. The nail and top of the pipe were approximately 3 inches below the surface of the road and 0.1' north of the center of the top of the rail. Previous private surveys call for a mag nail, bolt and nail-in-pipe. The nail, pipe and rail were removed during excavation. This corner was originally established in July, 1821.



*Kenneth E. Hedge*  
Kenneth E. Hedge, County Surveyor

*J. S. Swift*  
James S. Swift, IN LS 20200054  
December 21, 2007

Eagle Township

Section 4 T17N, R2E	Section 3 T17N, R2E
Section 9 T17N, R2E	Section 10 T17N, R2E

PHOTOGRAPHIC DOCUMENTATION

Date of photography: 11/09/2007

Photograph of iron pipe with nail in it and railroad rail. BCS records from April, 1970 state that a found stone was replaced with a railroad rail. The photograph is oriented with north towards the top of the page. The top of the iron pipe was 3 inches below the surface of the road and the top of the rail was 4 inches below the surface of the road. The Harrison monument was set in the position of the approximate center of mass of the top of the rail, being the approximate midpoint of the skinny section between the track and the base.



Black igneous stone found south and slightly west of the rail. This stone was found at 1.8 feet deep and was left in place. It is not known whether this is the same stone found and replaced with the rail in April 1970, or whether this is a different stone.

black igneous stone

