

SECTION CORNER RECORD

NE 500-1100

BOONE COUNTY SURVEYOR'S OFFICE

State Plane grid coordinates NAD83 (NSRS 2007):

North: 1773226.98 East: 3182760.89 (U.S. survey feet)

Type of monument: 1 inch diameter iron pin in concrete

Depth: flush with adjacent road surface

Indiana tie card references:

IN02_T19NR2E02_80

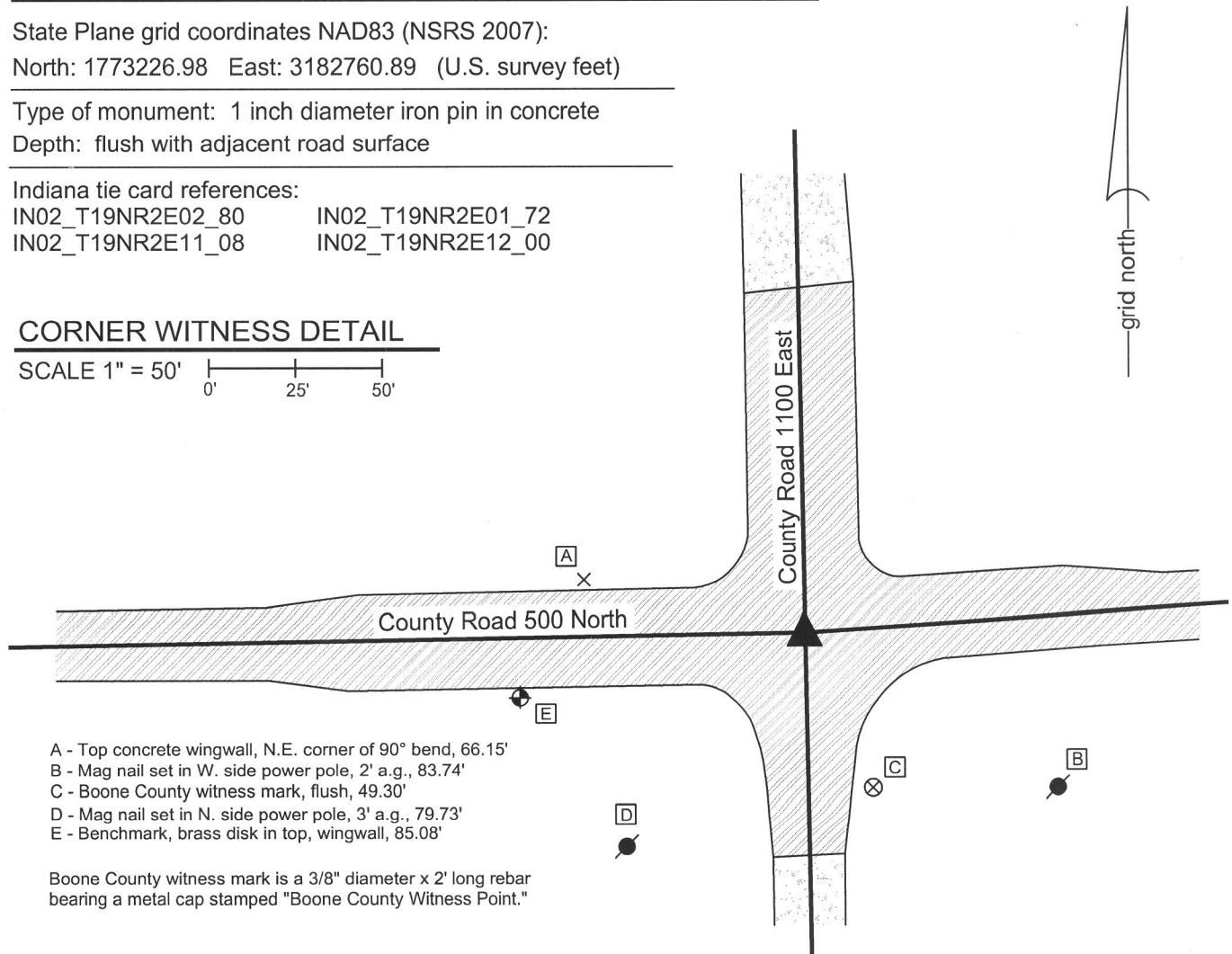
IN02_T19NR2E01_72

IN02_T19NR2E11_08

IN02_T19NR2E12_00

CORNER WITNESS DETAIL

SCALE 1" = 50'



- A - Top concrete wingwall, N.E. corner of 90° bend, 66.15'
- B - Mag nail set in W. side power pole, 2' a.g., 83.74'
- C - Boone County witness mark, flush, 49.30'
- D - Mag nail set in N. side power pole, 3' a.g., 79.73'
- E - Benchmark, brass disk in top, wingwall, 85.08'

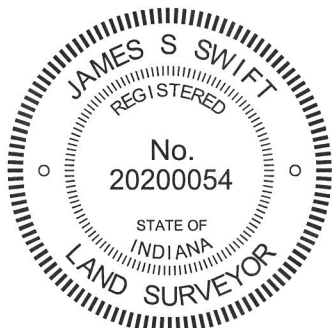
Boone County witness mark is a 3/8" diameter x 2' long rebar bearing a metal cap stamped "Boone County Witness Point."

A harrison monument was set over a stone found in the spring of 2011. The iron pin was set by others, in place of the harrison monument in the spring of 2012 as part of a bridge construction project.

A BCS record of September 23, 1870 states "Reestablished from a rock set where I drove stake when surveying the road. Marked rock that was there and set on top 16.14.12 +." A BCS tie card dated June, 1970 states "found stone. Replace top with Rail, bottom still in place."

This corner was excavated on April 13, 2011. Prior to excavation a section of railroad rail, evidently leaning towards the south, was found in a hole in the asphalt with a 5/8 inch diameter rebar on the east edge of the rail. The rail and rebar were removed and a stone was found at 34 inches deep. The stone is of an odd shape on top, being total of 8 inches N-S by 8 inches E-W, but being in the form of a "T" with a 5 inch arm oriented towards the north. An etched + was clearly visible, situated at the intersection of the N-S arm with the E-W arm. The height of the stone was not measured. As found, the rail was leaning south. Measurements indicated that the bottom of the rail had been below the level of the top of the stone, likely touching it on the north side and the top of the rail was 4 inches south of the etched + mark on the stone. The + mark of the stone was held as marking the corner. The stone was left in place and the harrison monument was set over the etched +. Subsequently the culverts to the immediate north and west of the corner were replaced and the harrison monument was removed during reconstruction of the intersection. The harrison was replaced in the same position by the 1 inch diameter iron pin. It is not documented whether the stone was left in place.

This corner was originally established as a wood post in June, 1821.



Kenneth E. Hedge

 Kenneth E. Hedge, County Surveyor

James S. Swift

 James S. Swift, IN LS 20200054
 February 6, 2013

Marion Township

Section 2 T19N, R2E	Section 1 T19N, R2E
Section 11 T19N, R1E	Section 12 T19N, R2E

PHOTOGRAPHIC DOCUMENTATION

Date of photography: April 13, 2011

View of the top of the railroad rail as found.



The stone found at 34 inches deep.



The stone found at 34 inches deep.



Close-up of the stone found. Note the etched + at the "T" intersection of the two parts of the stone.



For details and documentation, refer to related sheet "Section Corner Record."

SECTION CORNER RECORD

NE 500-1150

BOONE COUNTY SURVEYOR'S OFFICE

State Plane grid coordinates NAD83 (NSRS 2007):

North: 1773405.70 East: 3185457.32 (U.S. survey feet)

Type of monument: Harrison, 4" disk 'Section Corner'

Depth: One inch below adjacent road surface

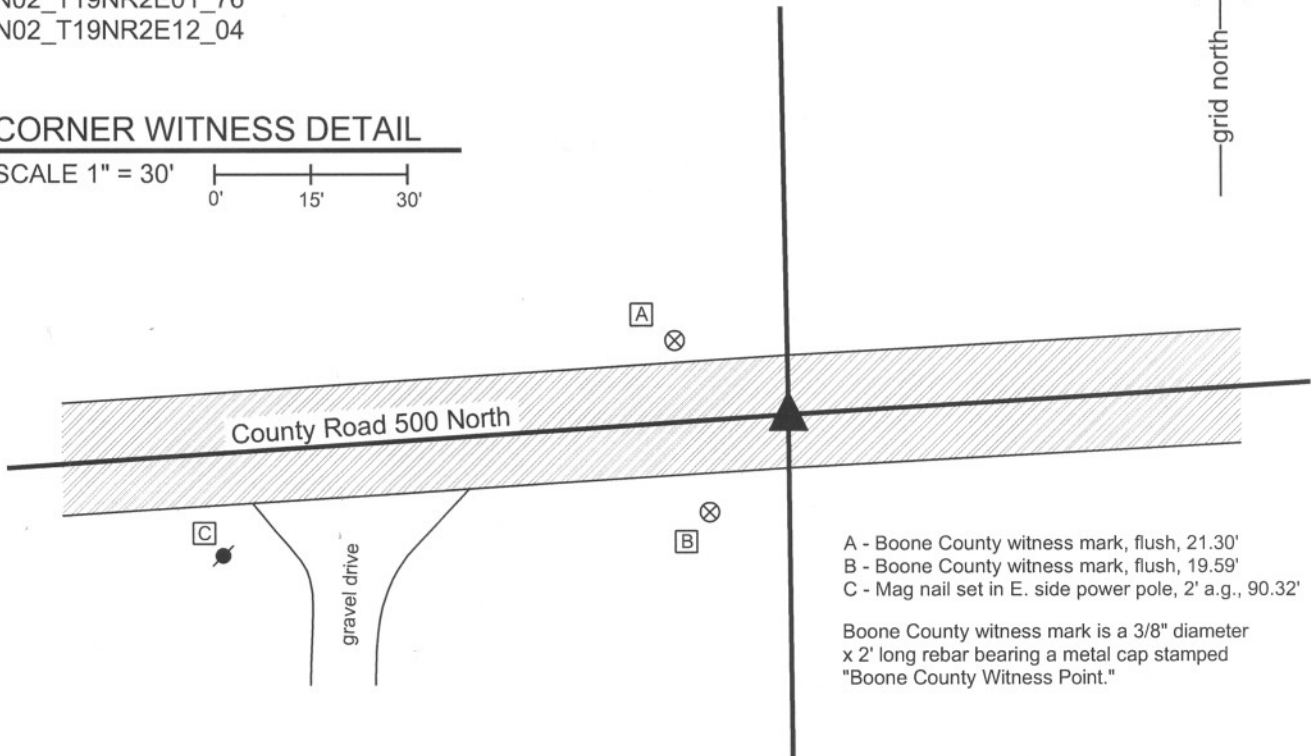
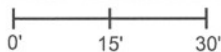
Indiana tie card references:

IN02_T19NR2E01_76

IN02_T19NR2E12_04

CORNER WITNESS DETAIL

SCALE 1" = 30'

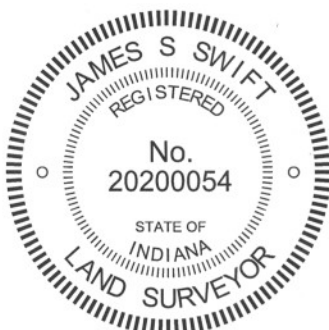


- A - Boone County witness mark, flush, 21.30'
- B - Boone County witness mark, flush, 19.59'
- C - Mag nail set in E. side power pole, 2' a.g., 90.32'

Boone County witness mark is a 3/8" diameter x 2' long rebar bearing a metal cap stamped "Boone County Witness Point."

The harrison monument was set in place of a stone and a section of railroad rail found.

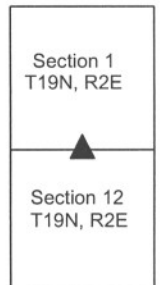
A BCS record of September 23, 1870 states "Reestablished from stumps of trees. Set two Rocks One 13.10.6 +. Top One 14.8.7 +." BCS field notes dated June, 1970 for which no tie card was found state "Found stone set rail." A BCS tie card dated June 19, 1974 states "Found Stone & Rail." This corner was excavated on September 27, 2011. Prior to excavation a section of railroad rail was found at 12 inches deep in a hole in the asphalt. The rail appeared to be leaning north. Excavation revealed a stone found at 27 inches deep. The rail was extended over the west edge of the center of the rock. The stone appeared to be knocked over. The stone was removed and measured to be 14 inches by 10 inches by 8 inches. As stood up, it would have been 14 inches tall. The stone does not precisely match the dimensions of either rock described in the 1870 record though is close to the dimensions of the record lower stone. No specific markings were identified on the rock. No other evidence of the corner was found in a 4 foot by 4 foot square hole centered on the top of the rail as found. The stone and railroad rail were both removed and a harrison monument was set in the position of the top of the rail as originally found, slightly west of the top, center of the found stone. This corner was originally established as a wood post in June, 2011



Kenneth E. Hedge
Kenneth E. Hedge, County Surveyor

James S. Swift
James S. Swift, IN LS 20200054
March 1, 2012

Marion Twp



PHOTOGRAPHIC DOCUMENTATION

Date of photography: April 13, 2011

View of the railroad rail, as found.



View of the stone as first exposed.



View of the stone more fully exposed.



View of the stone removed from the road bed.



For details and documentation, refer to related sheet "Section Corner Record."

SECTION CORNER RECORD

BOONE COUNTY SURVEYOR'S OFFICE

NE 500-1200

State Plane grid coordinates NAD83 (CORS96):

North: 1773569.68 East: 3188150.52 (U.S. survey feet) Corner 1

North: 1773472.93 East: 3188153.23 (U.S. survey feet) Corner 2

Type of monument: Harrison, 4" disk 'Section Corner'

Depth: One inch below adjacent road surface (Corner 1) Flush (Corner 2)

Indiana tie card references:

IN02_T19NR2E01_80 IN02_T19NR3E06_72

IN02_T19NR2E12_08 IN02_T19NR3E07_00

CORNER WITNESS DETAIL

SCALE 1" = 50'

- A - Boone County witness mark, flush, 30.59' to corner 1, 117.14' to corner 2
- B - Mag nail in S. side power pole, 2' a.g., 60.74' to corner 1, 156.80' to corner 2
- C - Boone County witness mark, flush, 65.31' to corner 1, 43.01' to corner 2
- D - Mag nail in N. side power pole, 2' a.g., 124.95' to corner 1, 57.48' to corner 2
- E - Mag nail in E. side power pole, 2' a.g., 60.74' to corner 1, 38.77' to corner 2

Boone County witness mark is a 3/8" diameter x 2' long rebar bearing a metal cap stamped "Boone County Witness Point."

The harrison monument at corner 1 was set over a stone found. The harrison monument at corner 2 was found present and left undisturbed.

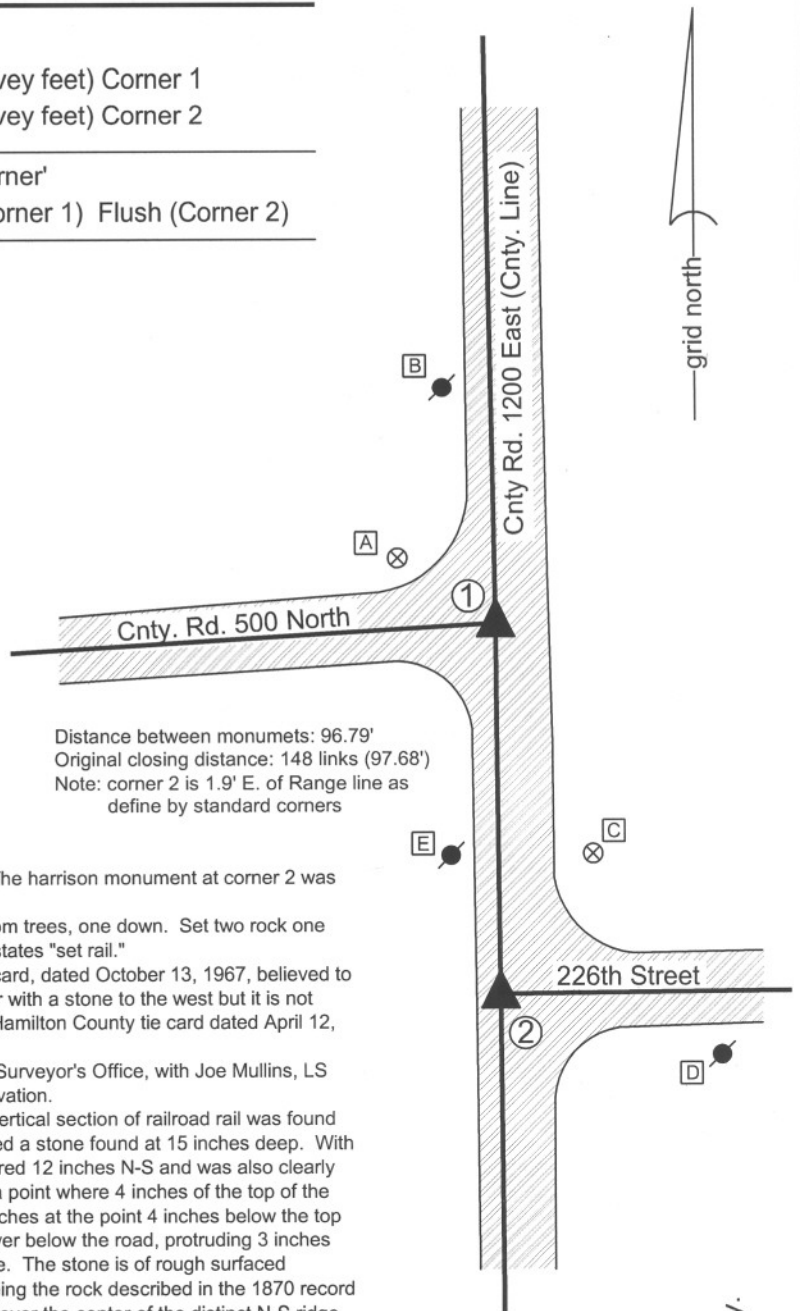
A BCS record of September 21-22, 1870 states "Reestablished from trees, one down. Set two rock one 7.6.5 + Top one 19.12.6 +." A BCS tie card dated June 19, 1974 states "set rail."

A BCS tie card dated June 19, 1974 states "set rail." Another tie card, dated October 13, 1967, believed to originate in the Hamilton County Surveyor's Office, shows a corner with a stone to the west but it is not clear which of the two corners is the subject of this document. A Hamilton County tie card dated April 12, 2004 states "Harrison set at surface over rebar."

Corner 1 was excavated in cooperation with the Hamilton County Surveyor's Office, with Joe Mullins, LS and other representatives of that office present at the time of excavation.

Corner 1 was excavated on July 23, 2012. Prior to excavation a vertical section of railroad rail was found at 8 inches deep in a large hole in the asphalt. Excavation revealed a stone found at 15 inches deep. With 12 inches of the stone exposed on the east side, the stone measured 12 inches N-S and was also clearly taller. The east-west dimension was measured to be 5 inches at a point where 4 inches of the top of the stone were exposed. It is noted that the N-S dimension was 10 inches at the point 4 inches below the top of the stone. The stone was vertical and embedded in the clay layer below the road, protruding 3 inches into the bottom of the road bed. The stone has a distinct N-S ridge. The stone is of rough surfaced material and no specific marks were found. It was accepted as being the rock described in the 1870 record and held as marking the corner. The harrison monument was set over the center of the distinct N-S ridge. The railroad rail, removed during excavation, had been 2.7 feet east and 1.1 foot north of the stone.

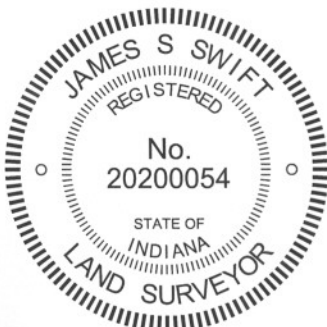
The harrison monument at the Hamilton County corner is 1.9 feet east of the range line as defined by the standard corners. The Hamilton County Surveyor's Office opted to leave the monument undisturbed and not excavate for additional evidence.



Distance between monuments: 96.79'
Original closing distance: 148 links (97.68')
Note: corner 2 is 1.9' E. of Range line as define by standard corners

Marion Twp.
Boone Cnty.

Adams Twp.
Hamilton Cnty.



Kenneth E. Hedge
Kenneth E. Hedge, County Surveyor

James S. Swift
James S. Swift, IN LS 20200054
January 15, 2013

Section 1 T19N, R2E	Section 6 T19N, R3E
Section 12 T19N, R2E	Section 7 T19N, R3E

PHOTOGRAPHIC DOCUMENTATION

Date of photography: July 23, 2012

View of the stone as first exposed.



View of the stone from the east.



View of the stone from above.



View of the stone from above and south.



The stone and area of excavation from the north.



The stone and area of excavation from the east.



For details and documentation, refer to related sheet "Section Corner Record."

SECTION CORNER RECORD

BOONE COUNTY SURVEYOR'S OFFICE

NE 550-1100

State Plane grid coordinates NAD83 (NSRS 2007):
 North: 1775878.38 East: 3182711.94 (U.S. survey feet)

Type of monument: Harrison, 4" disk 'Section Corner'
 Depth: six inches below adjacent gravel road surface

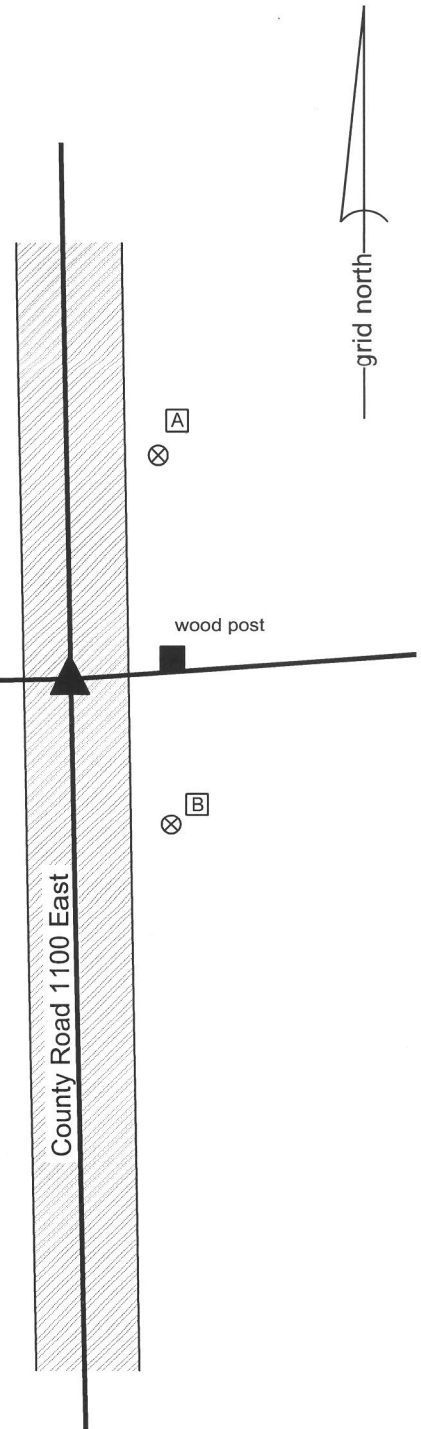
Indiana tie card references:
 IN02_T19NR2E02_44
 IN02_T19NR2E01_36

CORNER WITNESS DETAIL

SCALE 1" = 30'

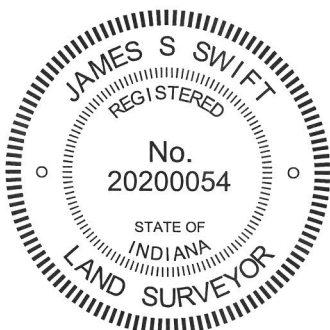
- A - Boone County witness mark, flush, 37.45'
- B - Boone County witness mark, flush, 27.38'
- C - Boone County witness mark, flush, 22.53'

Boone County witness mark is a 3/8" diameter x 2' long rebar bearing a metal cap stamped "Boone County Witness Point."



C ⊗

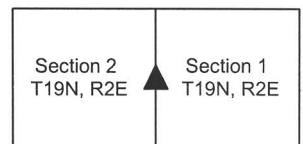
The harrison monument was set over a stone found.
 A BCS record of September 21-22, 1870 states "Reest from intersection of lines from West with Sect. line and some roots on one tree. Set a Rock 7.7.3 +. Top Rock 14.10-8 +." No recent BCS tie cards were found referencing this corner.
 This corner was excavated on November 15, 2011. Prior to excavation a 5/8 inch diameter rebar was found at 4 inches deep in the gravel road. No documentation was found associated with this rebar. Excavation revealed both of the stones described in the 1870 record along with another, larger rock adjacent to and south of the record stone. The top stone described in the 1870 record was found at 8 inches deep. As found, it appeared to have been knocked over from the south and was on its side. The stone was removed and was found to measure 15 inches by 10 inches by 8 inches with a distinct etched +. As found, the etched + was at the north edge of the stone. As stood up, the stone was vertical and the etched + was on the top. The record lower stone was found directly below this stone, measuring approximately 8 inches N-S by 7 inches E-W by 3 1/2 inches tall with a distinct etched + on the top center. This stone did not appear to be disturbed. A larger rock, measuring 11 inches N-S by 24 inches E-W by 11 inches tall, as measured on the N. edge, was found immediately north of the record stones. This rock was at 16 inches deep and appeared to be acting as a brace for the record top stone. The top of the record lower stone was at 18 inches deep. The top of the record top stone, if vertical, would have been approximately 3 inches deep. It is not surprsing, therefore, that the stone might have been hit by the blade of a road grader and knocked over. The record lower stone and the large, apparent brace rock were both left in place and a harrison monument was set directly over the etched + on the lower stone.
 The rebar, removed during excavation, had been 3.6 feet north of the etched + on the lower stone.
 This corner was originally established as a wood post in June, 1821.



Kenneth E. Hedge
 Kenneth E. Hedge, County Surveyor

James S. Swift
 James S. Swift, IN LS 20200054
 March 1, 2012, Revised March 7, 2013

Marion Township



PHOTOGRAPHIC DOCUMENTATION

Date of photography: November 15, 2011

View of the upper record stone as first exposed, evidently lying on its side with the original top of the stone to the north (left in this picture).



The upper record stone, removed from the road bed and placed in the orientation in which it was likely set in 1861, with the etched + on top.



The lower record stone and the large "brace" rock to the south. Note the distinct etched + mark on the top of the lower record stone.



Similar picture to the left, from a different angle and showing the record stone more fully exposed.



For details and documentation, refer to related sheet "Section Corner Record."

SECTION CORNER RECORD

NE 600-1100

BOONE COUNTY SURVEYOR'S OFFICE

State Plane grid coordinates NAD83 (2011):

Corner 1: North: 1778846.74 East: 3182739.26 (U.S. survey feet)

Corner 2: North: 1778844.45 East: 3182662.10 (U.S. survey feet)

Type of monuments (1&2): Brass plug INDOT Type B Monument

Depth: One inch below adjacent road surface

Indiana tie card references:

IN02_T20NR2E35_80 IN02_T20NR2E36_72

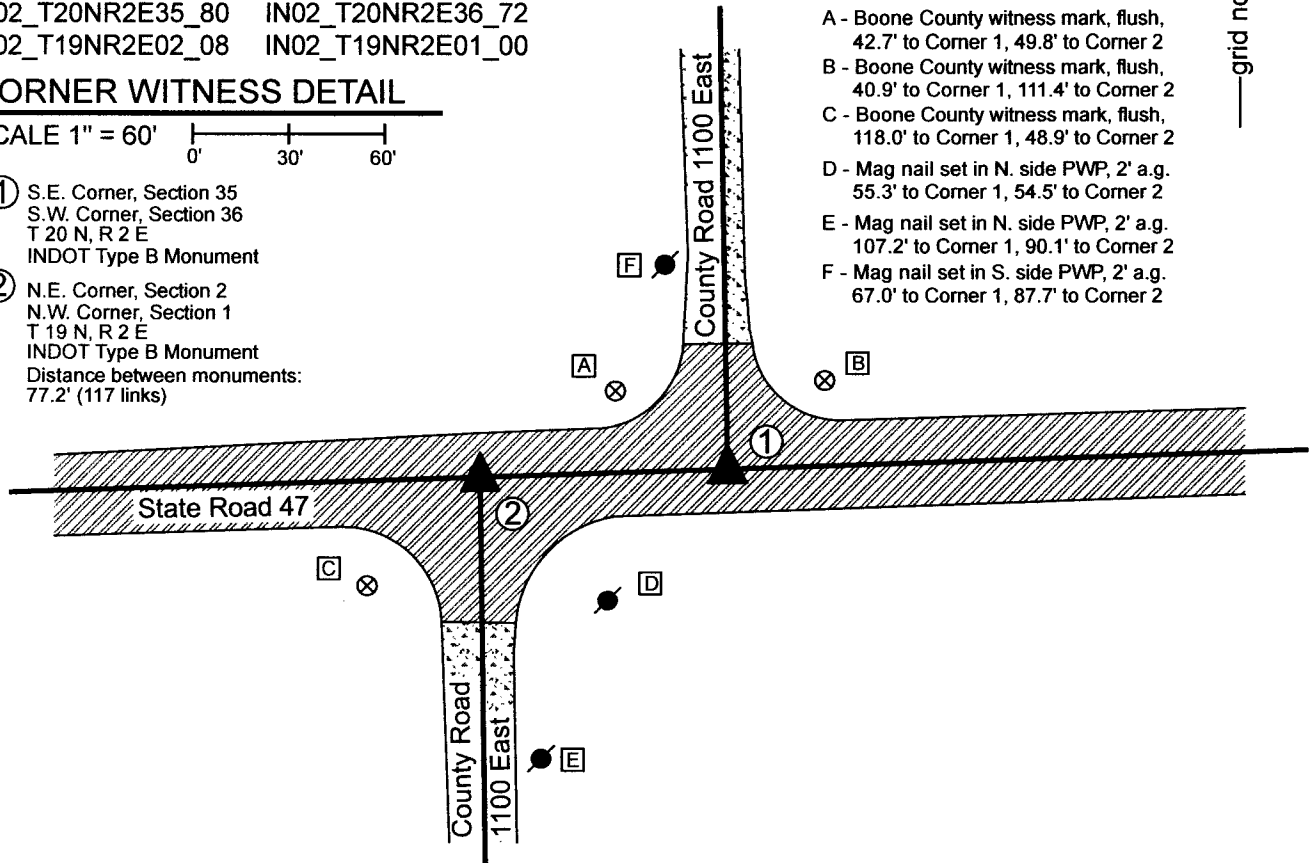
IN02_T19NR2E02_08 IN02_T19NR2E01_00

CORNER WITNESS DETAIL

SCALE 1" = 60'

- ① S.E. Corner, Section 35
S.W. Corner, Section 36
T 20 N, R 2 E
INDOT Type B Monument
- ② N.E. Corner, Section 2
N.W. Corner, Section 1
T 19 N, R 2 E
INDOT Type B Monument
Distance between monuments:
77.2' (117 links)

- A - Boone County witness mark, flush,
42.7' to Corner 1, 49.8' to Corner 2
- B - Boone County witness mark, flush,
40.9' to Corner 1, 111.4' to Corner 2
- C - Boone County witness mark, flush,
118.0' to Corner 1, 48.9' to Corner 2
- D - Mag nail set in N. side PWP, 2' a.g.
55.3' to Corner 1, 54.5' to Corner 2
- E - Mag nail set in N. side PWP, 2' a.g.
107.2' to Corner 1, 90.1' to Corner 2
- F - Mag nail set in S. side PWP, 2' a.g.
67.0' to Corner 1, 87.7' to Corner 2

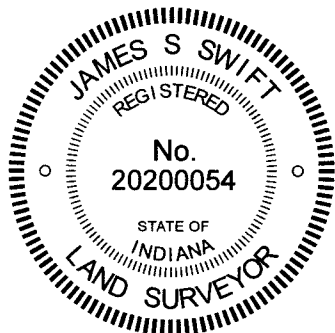


The INDOT Type B monuments were found in place and held as marking the respective corners.

Corner 1 was originally established in 1819. Corner 2 was established in 1821 at a point 117 links west of Corner 1.

A BCS record of March 25, 1853 states, with respect to Corner 1, "A stone set in the road." A BCS record of April 5, 1882 states, with respect to Corner 2, "Corner stone marked +."

A BCS tie card dated August 22, 2002 shows both corners as railroad spikes in the center of State Road 47 and in line with the centers of County Road 1100 East to the north and south, respectively. The document shows the monuments at 77.22 feet apart, equal to the federal closing distance of 117 links. The Type B monuments found in the field appear to be in the same positions as the spikes referenced on the 2002 tie card. No excavation was performed as these corners fall in a state road. The found Type B monuments agree with the local evidence of the corners, being at the intersections of the east-west state roads and north-south county roads. The Type B monuments were held as marking the corners.



Kenneth E. Hedge
 Kenneth E. Hedge, County Surveyor

James S. Swift
 James S. Swift, IN LS 20200054
 December 14, 2022

Marion Township

Section 35 T20N, R2E	Section 36 T20N, R2E
Section 2 T19N, R2E	Section 1 T19N, R2E

SECTION CORNER RECORD

NE 600-1150

BOONE COUNTY SURVEYOR'S OFFICE

State Plane grid coordinates NAD83 (2011):

Corner 1: North: 1778937.53 East: 3185391.66 (U.S. survey feet)

Corner 2: North: 1778936.35 East: 3185357.11 (U.S. survey feet)

Type of monument: Mag Nail with aluminum washer stamped 'Boone County Surveyor'

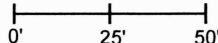
Depth: Flush with adjacent road surface

Indiana tie card references:

IN02_T20NR2E36_76 IN02_T19NR2E01_04

CORNER WITNESS DETAIL

SCALE 1" = 50'



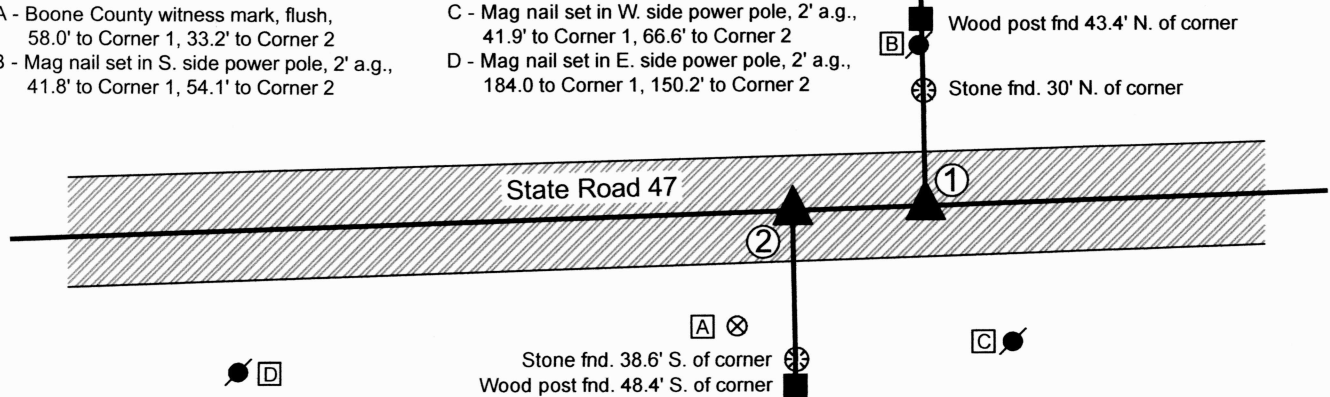
A - Boone County witness mark, flush, 58.0' to Corner 1, 33.2' to Corner 2

B - Mag nail set in S. side power pole, 2' a.g., 41.8' to Corner 1, 54.1' to Corner 2

C - Mag nail set in W. side power pole, 2' a.g., 41.9' to Corner 1, 66.6' to Corner 2

D - Mag nail set in E. side power pole, 2' a.g., 184.0' to Corner 1, 150.2' to Corner 2

- ① South Quarter Corner Section 36, T 20 N, R 2 E Mag Nail Set
 - ② North Quarter Corner Section 1, T 19 N, R 2 E Mag Nail Set
- Distance between monuments: 34.57'



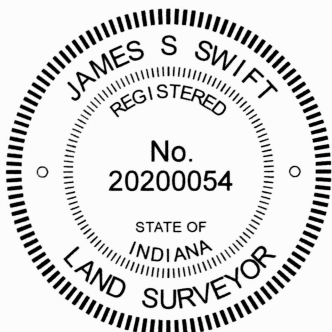
The Mag Nails were set at computed positions per evidence of the corners.

Corner 1 is an original federal corner, set in 1819 as the south line of T20N, R2E was being surveyed. Corner 2 is not an original federal corner.

A BCS record of September 21-22, 1870 calls Corner 2 as "A stone that was set." A BCS record of February 21-22, 1872 states, with respect to Corner 1, "Set two Rocks. One 8.7.6 + Top One 15.9.8 +. Cor. for Sect. One, T19 West 48 [links]." Note: 48 links = 31.68 feet. The INDOT plans for State Road 47 (Project No. 443, Sec. B, Thorntown-Sheridan State Road) do not show these corners, but do show fences to the north and south, both marked P.L. (property line) at 33.6 feet apart, east-west, per stationing. The average federal closing distance, based on the northeast and northwest corners of Section 1, is 58.5 links = 38.61 feet.

Evidence of the occupied lines to the north and south were found in the form of wood posts found on the north and south sides of the road. The post on the south side of the road appears to be ancient and is in-line with a field division to the south. A stone, embedded in the ground, but with the top exposed at ground level, was found immediately north of this post. The post on the north side of the road is also old, but does not appear quite as old as the post on the south side of the road. This post has fence cut to the north and west, has similarly sized brace posts to the north and west, and is in-line with a general mow line to the north. A stone, also embedded in the ground but exposed at ground level, was found south of the post. The approximate top, center of the stone is slightly east (0.7 foot) of this post.

The two posts are separated by 34.6 feet, east-west. This is approximately 3 feet more than the separation called for in the 1872 BCS record, 2 feet more than shown on the INDOT plans, and 4 feet less than the computed average federal closing distance. No surveys were found in the Boone County Recorder's Office calling for these corners and no recent BCS tie cards were found indicating the positions of the corners. No monuments were found marking the corners and none are known to have existed previously, in recent times. As this is a state road, no excavation was performed, hence the stones called for in the 1872 record were not found. The evidence of the existing posts was held to determine the positions of the corners. The 1938 road plans show a no-curve P.I. in the vicinity of this corner. It was observed that a straight line connecting the southeast and southwest corner of Section 36 falls along the physical center of the road in the immediate vicinity of the corners. The corners were established in-line with the posts to the north and south, respectively, in the center of the road, on a straight line connecting the southeast and southwest corners of Section 36. Uncertainties in the east-west dimension of up to 4 feet in both directions may be attributed to the positions of these corners, based on the original federal dimensions and 1872 BCS records.



Carol Cunningham
Carol Cunningham, County Surveyor

James S. Swift
James S. Swift, IN LS 20200054
August 31, 2023

Marion Township

Section 36
T20N, R2E

Section 1
T19N, R2E

SECTION CORNER RECORD

BOONE COUNTY SURVEYOR'S OFFICE

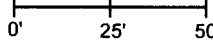
NE 600-1200

State Plane grid coordinates NAD83 (2011):
 North: 1779028.19 East: 3188040.23 (U.S. survey feet)

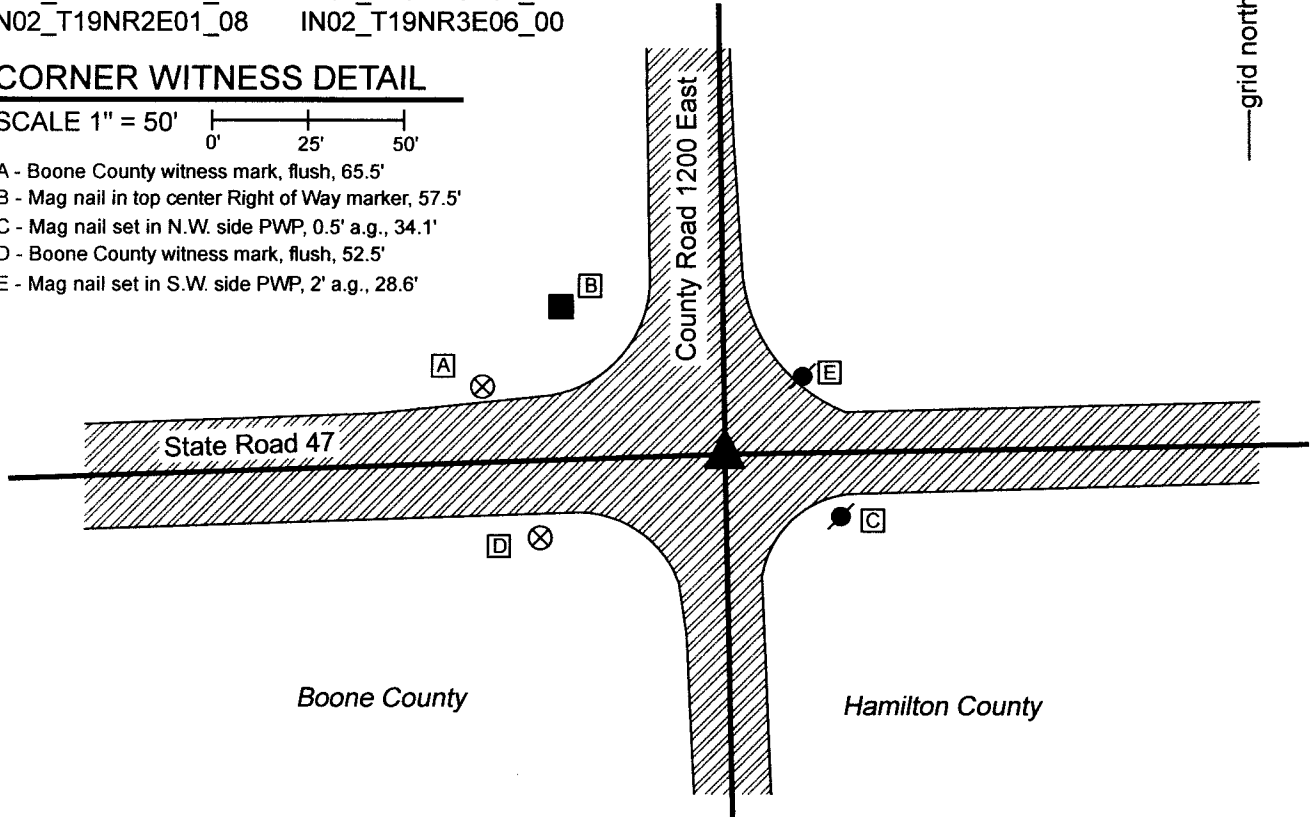
Type of monument: Harrison within monument box
 Depth: 4" below adjacent road surface

Indiana tie card references:
 IN02_T20NR2E36_80 IN02_T20NR3E31_72
 IN02_T19NR2E01_08 IN02_T19NR3E06_00

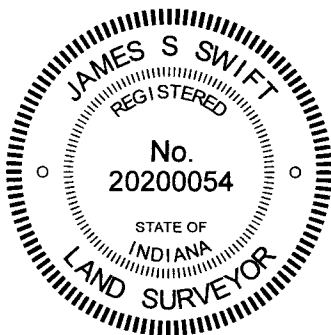
CORNER WITNESS DETAIL

SCALE 1" = 50' 

- A - Boone County witness mark, flush, 65.5'
- B - Mag nail in top center Right of Way marker, 57.5'
- C - Mag nail set in N.W. side PWP, 0.5' a.g., 34.1'
- D - Boone County witness mark, flush, 52.5'
- E - Mag nail set in S.W. side PWP, 2' a.g., 28.6'



The Harrison monument in a cast iron box was found in place and held as marking the corner. This corner was originally established as a common corner to four townships in 1819. A BCS record of September 21-22, 1870 states, with respect to the corner, "Reestablished from Beech. Found rotten stake. Set rock 5. 3-1/2 by 3 +." No recent BCS tie cards were found referencing this corner. A Hamilton County Surveyor Corner Record sheet dated January 21, 2015 shows the corner as "HARRISON IN CASTING." This document references a history of the corner wherein a Harrison monument was set in 1990 and reset in 2003. Prior to that, a boat spike and found, evidently over a spike, in 1973. The found Harrison monument is 4 inches below grade and is within a cast iron box typically associated with an INDOT Type B monument. The position of the monument fits with local evidence of the corner, being at the intersection of the east-west state road and north-south county road. No excavation was performed at this corner as it falls within a state road. The Harrison monument was held as marking the corner.



Kenneth E. Hedge
 Kenneth E. Hedge, County Surveyor

James S. Swift
 James S. Swift, IN LS 20200054
 December 14, 2022

Marion Township
 Boone County

Adams Township
 Hamilton County

Section 36 T20N, R2E	Section 31 T20N, R3E
Section 1 T19N, R2E	Section 6 T20N, R3E