

# SECTION CORNER RECORD

SW 600-600

## BOONE COUNTY SURVEYOR'S OFFICE

State Plane grid coordinates NAD83 (2011):

North: 1713661.67 East: 3093370.48 (U.S. survey feet)

Type of monument: Harrison, 4" disk 'Section Corner'

Depth: Six inches below adjacent road surface

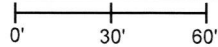
Indiana tie card references:

IN02\_T18NR2W36\_80 IN02\_T18NR1W31\_72

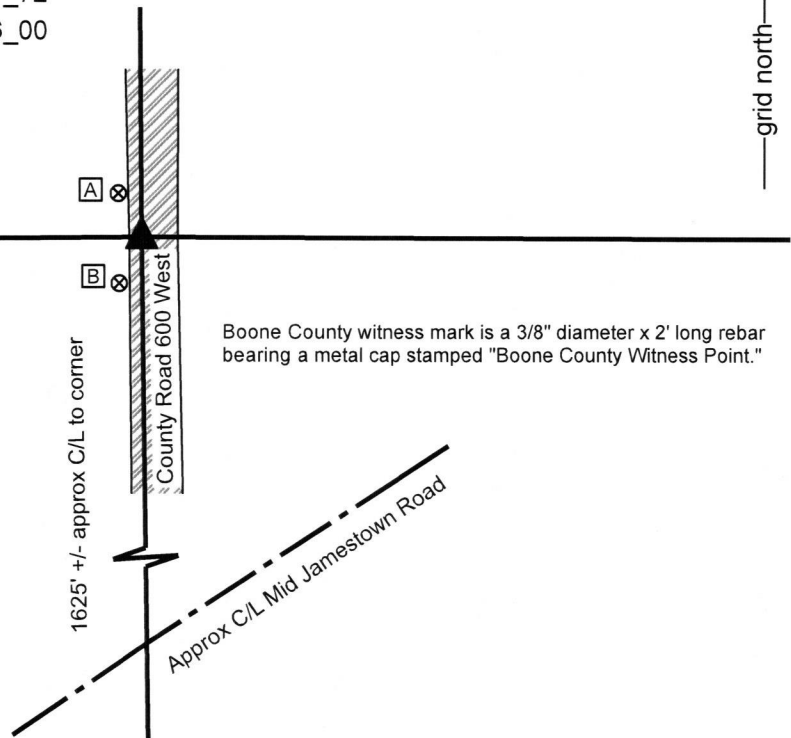
IN02\_T17NR2W01\_08 IN02\_T17NR1W06\_00

### CORNER WITNESS DETAIL

SCALE 1" = 60'



- A - Boone County witness mark, flush, 15.5'
- B - Boone County witness mark, flush 16.0'



Boone County witness mark is a 3/8" diameter x 2' long rebar bearing a metal cap stamped "Boone County Witness Point."

The Harrison monument was set over a stone found.

This corner represents the common corner of townships 17 and 18 north, ranges 1 and 2 west, Second Principal Meridian. No specific descriptions of the corner were found in the BCS Surveyor's Record beyond the original establishment of the corner in 1819. No recent BCS tie cards were found referencing the corner, nor were any surveys found in the Office of the Boone County Recorder which reference the corner.

This corner was excavated on September 13, 2019. Prior to excavation, an approximate position for the corner was established with respect to existing fence and post evidence to the east and west. Though no above ground evidence was visible in the immediate vicinity of the corner, beyond the existing north-south roadway, the remote evidence to the east and west worked well from both directions, with minimal uncertainty. Excavation in the area of the computed probable position for the corner revealed three stones found, all in a stack. The top stone was found at 12 inches deep, being a small stone located entirely within the fill material of the road. The second stone was found at 17 inches deep, also in the fill material of the road. This stone measured 10 inches E-W by 12 inches N-S by 9 inches thick. The third stone was found at 27 inches deep directly below the top two. This stone was embedded in the clay layer below the road. It measured 10 inches N-S by 10 inches E-W by 8 inches thick and bore a distinct etched "+" mark on the top, near the northwest edge of the stone. The stones were accepted as representing the best evidence of the corner and were held as marking the corner. The top two stones were removed and the bottom stone was left in place. A Harrison monument was set over the top, center of the bottom stone, slightly southeast of the etched mark. It is noted that the stones were found near the west edge of the road but well in line with the center of the road from a point several hundred feet north to the corner 1/2 mile north. No metal monuments were found prior to or during excavation.



*Kenneth E. Hedge*  
Kenneth E. Hedge, County Surveyor

*James S. Swift*  
James S. Swift, IN LS 20200054  
September 25, 2019

Jackson Township

Section 36 T18N, R2W	Section 31 T18N, R1W
Section 1 T17N, R2W	Section 6 T17N, R1W

# SECTION CORNER RECORD

SW 650-650

## BOONE COUNTY SURVEYOR'S OFFICE

State Plane grid coordinates NAD83 (2011):

North: 1710890.40 East: 3090715.44 (U.S. survey feet)

Type of monument: Harrison, 4" disk 'Section Corner'

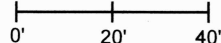
Depth: Four inches below adjacent road surface

Indiana tie card references:

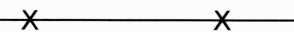
IN02\_T17NR2W01\_40

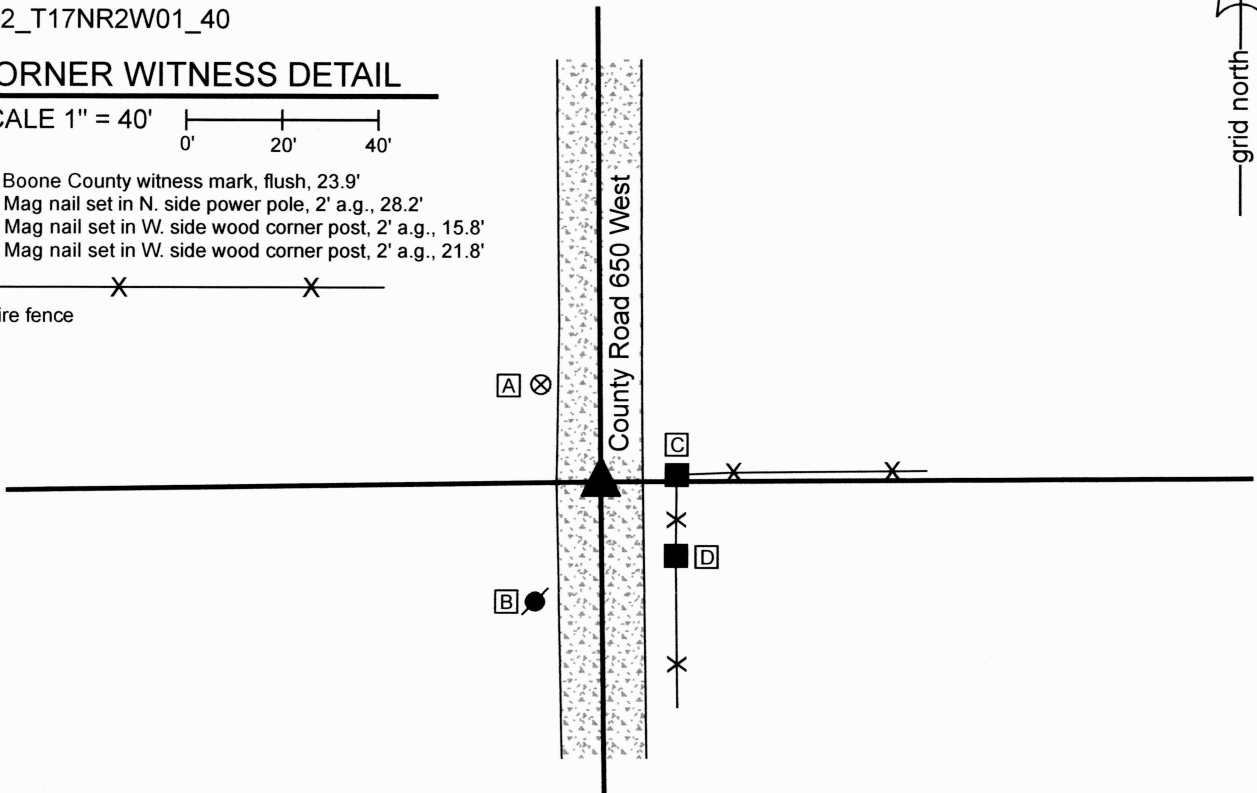
### CORNER WITNESS DETAIL

SCALE 1" = 40'



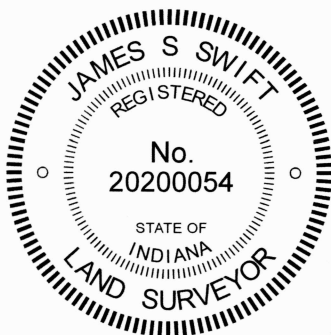
- A - Boone County witness mark, flush, 23.9'
- B - Mag nail set in N. side power pole, 2' a.g., 28.2'
- C - Mag nail set in W. side wood corner post, 2' a.g., 15.8'
- D - Mag nail set in W. side wood corner post, 2' a.g., 21.8'

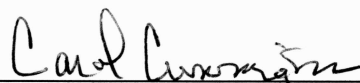
  
- wire fence

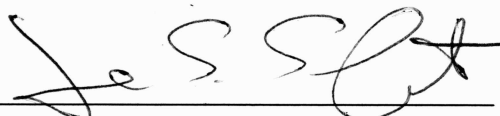


The Harrison monument was set over a stone found. This corner, being the center of Section 1, is not an original federal corner. The corner is referenced on an entry of July 18, 1834. The corner is also referenced on an entry of December 24, 1856, which states "Established Corner. Set post...." A subsequent record of June 11, 1859 addresses the corner with the statement "Established center corner. Set a rock from which...." and includes a note which states, "The corner in the center of this section was established by Ensminger and recorded on page 21 of this book, but at the request of some and the consent of all it is now established a short distance west of that place."

This corner was excavated on February 9, 2024. Prior to excavation, no metal monument was found marking the corner. Excavation in the center of the north-south road, in-line with an old fence to the east, revealed a stone found at 13 inches deep. The stone is quite large and was found to be at least 14 inches tall, by 24 inches N-W and 12 inches E-W. The stone is cocked slightly to cardinal directions, but is clearly a stone set purposely at this position. The high point of the stone was observed at the north end of the top of the stone. The position of the stone fit well with the dimensions noted in the 1859 record, accounting for a standard scale factor of 1.00415 applied to measurements from that era. The stone is approximately 1.5 feet south of the fence on the east side of the road. The stone was held as marking the corner. The stone was left in place and a Harrison monument was set directly over the high point of the stone, set in concrete which was anchored to the top and north edge of the stone.

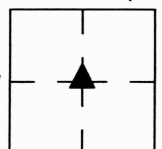


  
Carol Cunningham, County Surveyor

  
James S. Swift, IN LS 20200054  
February 14, 2024

Jackson  
Township

Section 1  
T17N, R2W



# SECTION CORNER RECORD

SW 600-700

## BOONE COUNTY SURVEYOR'S OFFICE

State Plane grid coordinates NAD83 (2011):  
 North: 1713621.22 East: 3088047.32 (U.S. survey feet)  
 North: 1713621.05 East: 3088004.40 (U.S. survey feet)

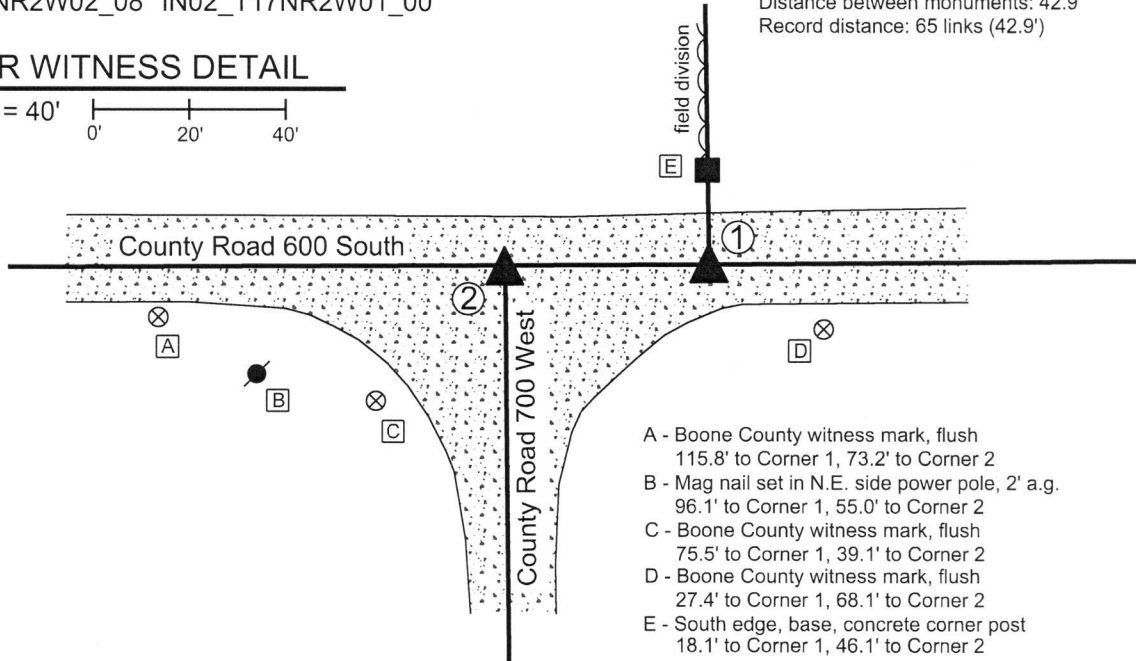
Type of monument: Harrison, 4" disk 'Section Corner'  
 Depth: Six inches below adjacent gravel road surface

Indiana tie card references:  
 IN02\_T18NR2W35\_80 IN02\_T18NR2W36\_72  
 IN02\_T17NR2W02\_08 IN02\_T17NR2W01\_00

- ① S.E. Corner, Section 35  
 S.W. Corner, Section 36  
 T 18 N, R 2 W
  - ② N.W. Corner, Section 1  
 N.E. Corner, Section 2  
 T 17 N, R 2 W
- Distance between monuments: 42.9'  
 Record distance: 65 links (42.9')

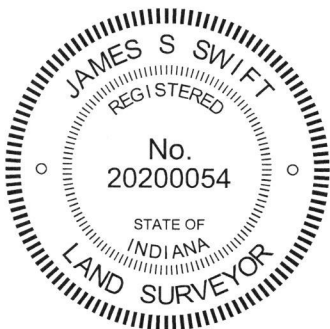
### CORNER WITNESS DETAIL

SCALE 1" = 40'



- A - Boone County witness mark, flush  
 115.8' to Corner 1, 73.2' to Corner 2
- B - Mag nail set in N.E. side power pole, 2' a.g.  
 96.1' to Corner 1, 55.0' to Corner 2
- C - Boone County witness mark, flush  
 75.5' to Corner 1, 39.1' to Corner 2
- D - Boone County witness mark, flush  
 27.4' to Corner 1, 68.1' to Corner 2
- E - South edge, base, concrete corner post  
 18.1' to Corner 1, 46.1' to Corner 2

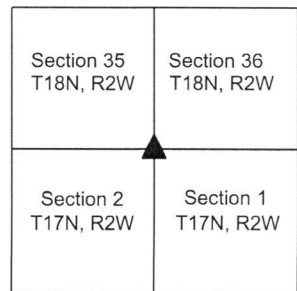
The Harrison monuments at both corners were set over stones found.  
 A BCS record dated November 20-21, 1871 states, with respect to Corner 1, "Reest. from trees (one a stp). Set two rocks. One 18.14.11 +. Top one 20.16.11 +." A BCS record dated May 22, 1896 states, with respect to Corner 2, "Set Rock 8x10x12 +. Estab. 65 links W. of Cors to 35-36."  
 A BCS tie card referencing Corner 2, dated April 17, 1972 states, "No stone - RRR put in."  
 These corners were excavated on September 10, 2018. Prior to excavation, a rebar was found at 2 inches deep in the gravel road, situated against the north edge of a vertical section of railroad rail, the top of which was at 4 inches deep. These monuments appeared to be marking Corner 2. No metal monuments were found near Corner 1 prior to excavation. Excavation at Corner 1 revealed a stone found at 16 inches deep. The stone had a distinct etched + mark on the top and measured 20 inches N-S by 16 inches E-W with the top 8 inches exposed. The full height of 11 inches was measured on the west edge. Probing indicated that another stone is situated below the top stone. These stones were accepted as being the same monuments described in the 1871 record and were held as marking Corner 1. A Harrison monument was set directly over the etched + mark on the top stone. Excavation at Corner 2 revealed a stone found at 18 inches deep. This stone also had a distinct + mark on top. The stone measured one inch short of the 1896 record dimensions in all directions, being 9 inches N-S by 7 inches E-W by 11 inches tall. This stone was accepted as being the same monument described in the 1896 record. The specific position of Corner 2 was established on the township line as defined by Corner 1 and the standard corner one half mile west (see Corner SW 600-750), over the north edge of the stone, 0.4 foot north of the + mark). The railroad rail, removed during excavation, had been 1.4 feet south and 1.4 feet west of the final monumented position for Corner 2.  
 The distance between the two stones is 42.9 feet or 65 links, matching the original federal closing distance and the offset reported in the 1895 record. Corner 1 was originally established as a wood post in 1819. Corner 2 was originally established as a wood post in 1820.



*Kenneth E. Hedge*  
 Kenneth E. Hedge, County Surveyor

*James S. Swift*  
 James S. Swift, IN LS 20200054  
 September 19, 2018

Jackson Township



# SECTION CORNER RECORD

# SW 650-700

## BOONE COUNTY SURVEYOR'S OFFICE

State Plane grid coordinates NAD83 (2011):  
North: 1710850.66 East: 3088034.89 (U.S. survey feet)

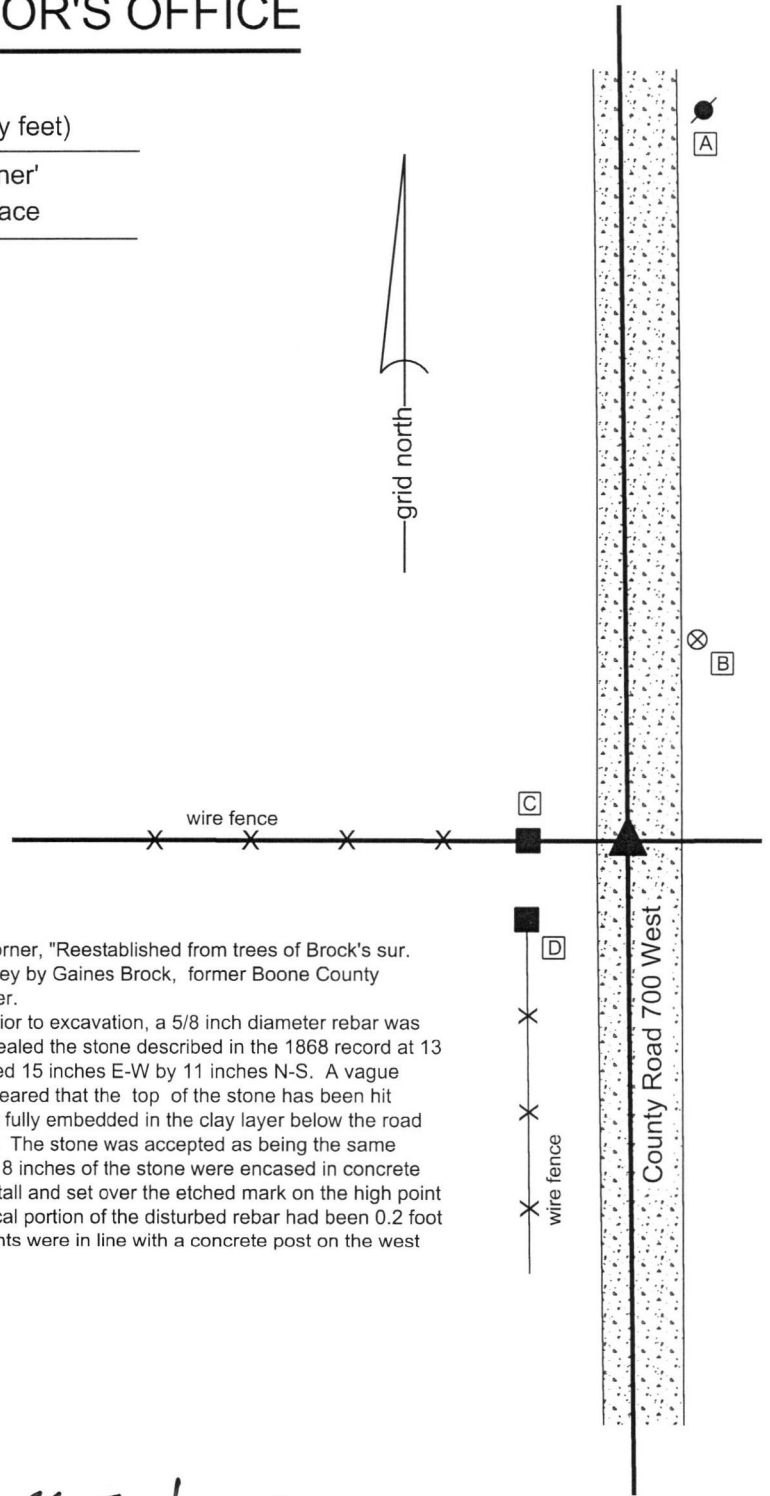
Type of monument: Harrison, 4" disk 'Section Corner'  
Depth: Six inches below adjacent gravel road surface

Indiana tie card references:  
IN02\_T17NR2W02\_44 IN02\_T17NR2W01\_36

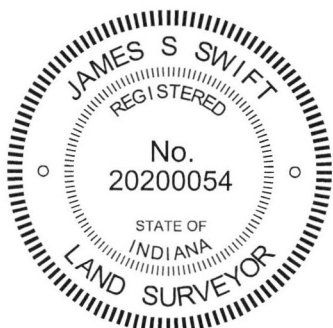
### CORNER WITNESS DETAIL

SCALE 1" = 40'  
0' 20' 40'

- A - Mag Nail set in W. side power pole, 2' a.g., 152.4'
- B - Boone County witness mark, flush, 44.3'
- C - East edge, concrete corner post, flush, 19.0'
- D - Mag nail set in E. edge, wood post, 2' a.g., 26.7'



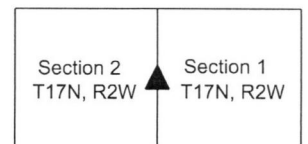
The Harrison monument was set over a stone found. A BCS record dated February 25, 1868 states, with respect to this corner, "Reestablished from trees of Brock's sur. Set Rock 24,15,11 marked +." The record references an earlier survey by Gaines Brock, former Boone County Surveyor. No recent BCS tie cards were found referencing this corner. Excavation was performed at this corner on September 11, 2018. Prior to excavation, a 5/8 inch diameter rebar was found, substantially bent, at the surface of the road. Excavation revealed the stone described in the 1868 record at 13 inches deep. With the top 8 inches of the stone exposed, it measured 15 inches E-W by 11 inches N-S. A vague chiseled + mark was visible at the top, high point of the stone. It appeared that the top of the stone has been hit occasionally in the past by road grading equipment. The stone was fully embedded in the clay layer below the road with the top of the stone coincident with the bottom of the road bed. The stone was accepted as being the same monument set in 1868 and was held as marking the corner. The top 8 inches of the stone were encased in concrete and a Harrison monument was broken off at approximately 5 inches tall and set over the etched mark on the high point of the stone. The rebar was removed during excavation. The vertical portion of the disturbed rebar had been 0.2 foot south and 1.8 feet east of the high point of the stone. Both monuments were in line with a concrete post on the west side of the road. This corner was originally established as a wood post in 1820.



*Kenneth E. Hedge*  
Kenneth E. Hedge, County Surveyor

*James S. Swift*  
James S. Swift, IN LS 20200054  
September 19, 2018

Jackson Township



# SECTION CORNER RECORD

SW 700-650

## BOONE COUNTY SURVEYOR'S OFFICE

State Plane grid coordinates NAD83 (2011):

Corner: North: 1708231.82 East: 3090746.80 (U.S. survey feet)

Witness: North: 1708232.52 East: 3090746.80 (U.S. survey feet)

Corner: 8-inch diameter round wood corner post

Witness monument: 5/8" diameter rebar with aluminum cap stamped 'Boone County Surveyor'

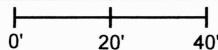
Witness Depth: Two inches above adjacent grade

Indiana tie card references:

IN02\_T17NR2W01\_76 IN02\_T17NR2W12\_04

### CORNER WITNESS DETAIL

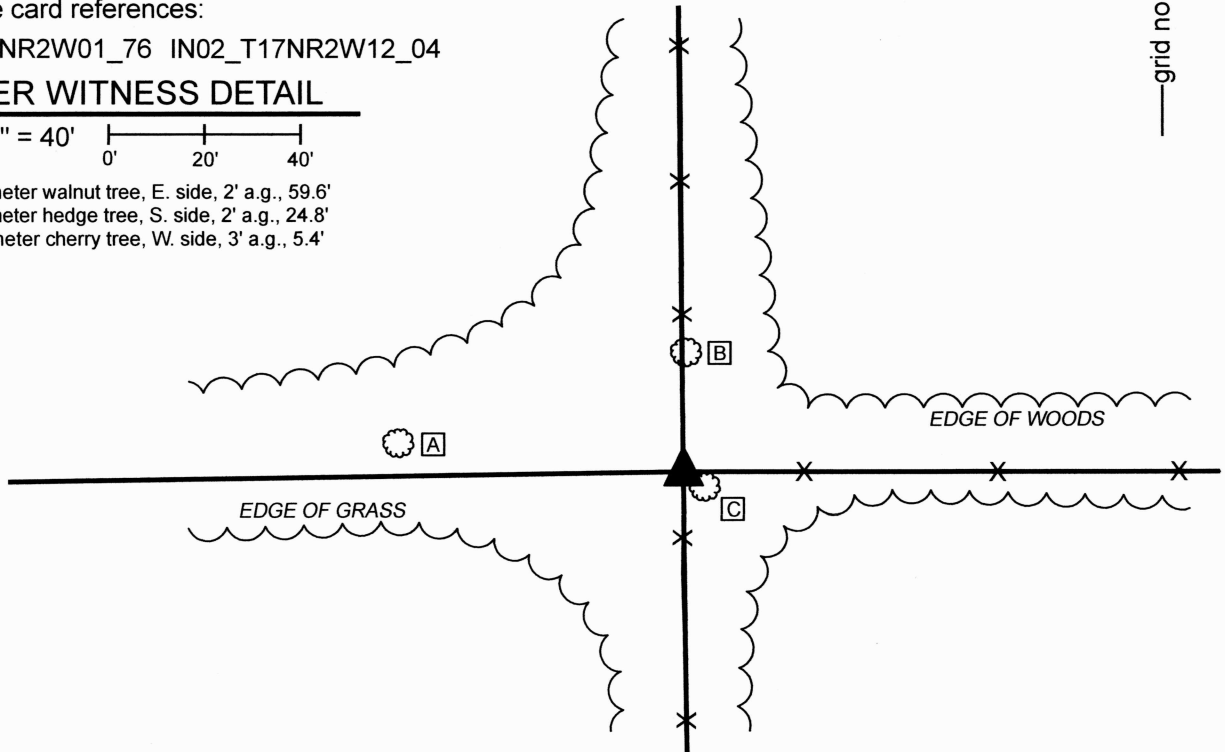
SCALE 1" = 40'



A - 18" diameter walnut tree, E. side, 2' a.g., 59.6'

B - 24" diameter hedge tree, S. side, 2' a.g., 24.8'

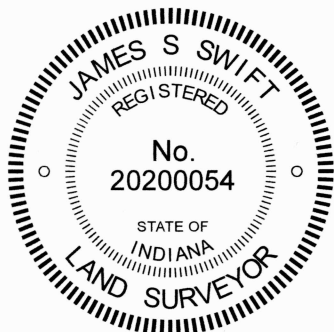
C - 20" diameter cherry tree, W. side, 3' a.g., 5.4'

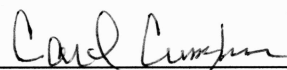


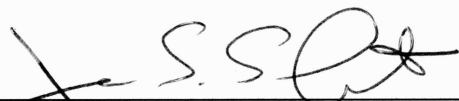
The wood corner post was found in place and held as marking the corner.

No specific descriptions of this corner were found in the BCS Surveyor's Record beyond the establishment of the corner as a wood post in 1820. No recent BCS tie cards were found referencing the corner. A survey by Cary B. Dodge which is incorporated as part of a deed recorded as Instrument 200700010983 in the Office of the Boone County Recorder appears to show the corner as a wood corner post, though does not specifically state that. This corner was excavated on February 24, 2024. The 8-inch diameter round wood corner post was found at the intersection of standing fences to the north, east, and south with fencing cut to the west. The post is clearly very old. The position of the post works well with the relative position of the corner and the center of Mid-Jamestown Road as it crosses the east line of the southwest quarter of Section 1, as shown on the Dodge survey, and appears to be the same position as held by Dodge.

Manual excavation and probing around the base of the post revealed two small rocks, neither of which appear to be corner stones. The post was accepted as the best available evidence of the corner. As the post remains solid in the ground and has standing fence attached to it, the post was left in place. A 30-inch length of rebar with metal cap stamped 'Boone County Surveyor' was set at the north edge of the post as a witness mark. The post represents the corner, the rebar is a witness to that corner. The rebar was set 0.7 foot north of the center of the post.



  
Carol Cunningham, County Surveyor

  
James S. Swift, IN LS 20200054

February 21, 2024

Jackson Township

Section 1  
T17N, R2W

Section 12  
T17N, R2W