

# SECTION CORNER RECORD

SW 600-000

## BOONE COUNTY SURVEYOR'S OFFICE

State Plane grid coordinates NAD83 (2011):

North: 1713794.56 East: 3125083.2540 (U.S. survey feet)

Type of monument: Harrison, 4" disk 'Section Corner'

Depth: One inch below adjacent road surface

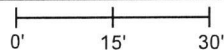
Indiana tie card references:

IN02\_T18NR1W36\_80 IN02\_T18NR1E31\_72

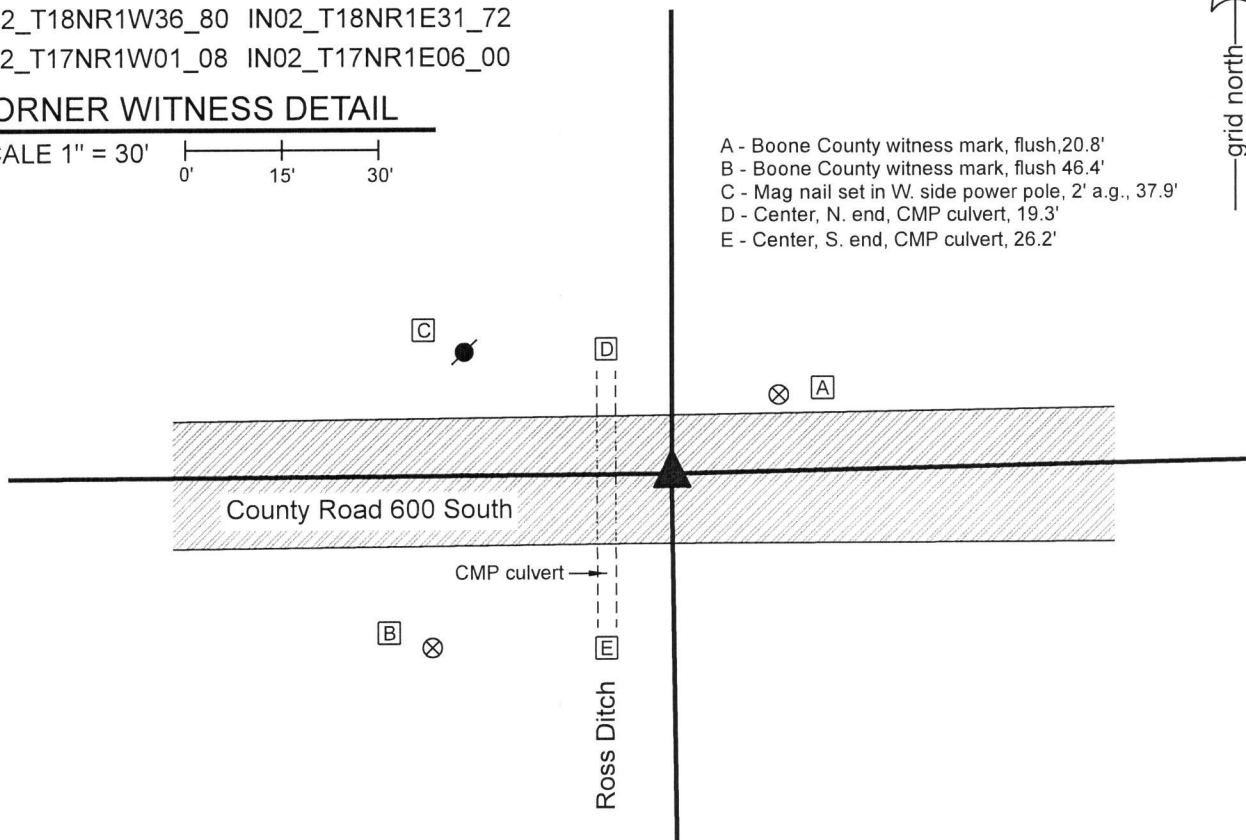
IN02\_T17NR1W01\_08 IN02\_T17NR1E06\_00

### CORNER WITNESS DETAIL

SCALE 1" = 30'



- A - Boone County witness mark, flush, 20.8'
- B - Boone County witness mark, flush 46.4'
- C - Mag nail set in W. side power pole, 2' a.g., 37.9'
- D - Center, N. end, CMP culvert, 19.3'
- E - Center, S. end, CMP culvert, 26.2'

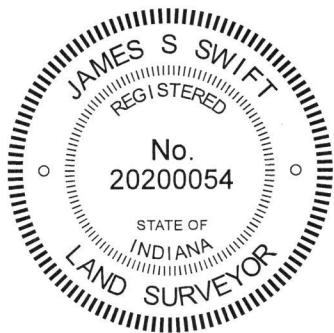


The Harrison monument was set in place of a railroad spike found.

A BCS record dated September 8-12, 1857 (original written as 1837 but writing crossed out. The character of the record fits with 1857, not 1837) states, with respect to this corner, "Reestablished. Set Rock 10x22." A BCS record dated May 8-9, 1911 states, with respect to this corner, "Est. on meridian line in line with H-A, Sec. 31... Rock shaley. 10x10x12. Sharp point up. On N. side gravel road near track." A BCS tie card dated May 19, 1994 shows the corner as a railroad spike in the center of County Road 600 South slightly east of an open ditch.

This corner falls on the east edge of the Ross Ditch. It is apparent that ancient evidence would not remain present, due to previous disruption of the ground associated with excavation along the ditch. The railroad spike called in the 1994 tie card was found undisturbed. The position of the spike matches the remaining two reference ties to the spike. The position of the spike, along the east edge of the ditch, fits very well in alignment with other evidence found along the meridian line. The position of the spike also fits well with evidence of the standard corners to the east (T 18N, R1E) and with evidence of the closing corners to the west (T17N, R1W), though it is noted that excavation has not yet been performed along the line between T18N & T17N, R1W, west of the spike. With no contrary evidence found and general agreement with the positions of surrounding corners, the railroad spike shown on the 1994 tie card was accepted as the best available evidence and was held as marking the corner. The spike was removed a replaced with a Harrison monument in the same position on October 25, 2019.

This corner was originally established as a wood post in 1819.



*Kenneth E. Hedge*  
Kenneth E. Hedge, County Surveyor

*James S. Swift*  
James S. Swift, IN LS 20200054  
November 19, 2019

Jefferson Township

Section 36 T18N, R1W	Section 31 T18N, R1E
Section 1 T17N, R1W	Section 6 T17N, R1E

# SECTION CORNER RECORD

# SW 600-100

## BOONE COUNTY SURVEYOR'S OFFICE

State Plane grid coordinates NAD83 (2011):

Corner 1: North: 1713763.82 East: 3119741.54 (U.S. survey feet)

Harrison, 4" disk 'Section Corner' One inch below adjacent road

Depth: One inch below adjacent road surface

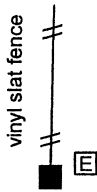
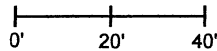
Indiana tie card references:

IN02\_T18NR1W36\_72 IN02\_T18NR1W35\_80

IN02\_T17NR1W02\_08 IN02\_T17NR1W01\_00

### CORNER WITNESS DETAIL

SCALE 1" = 40'

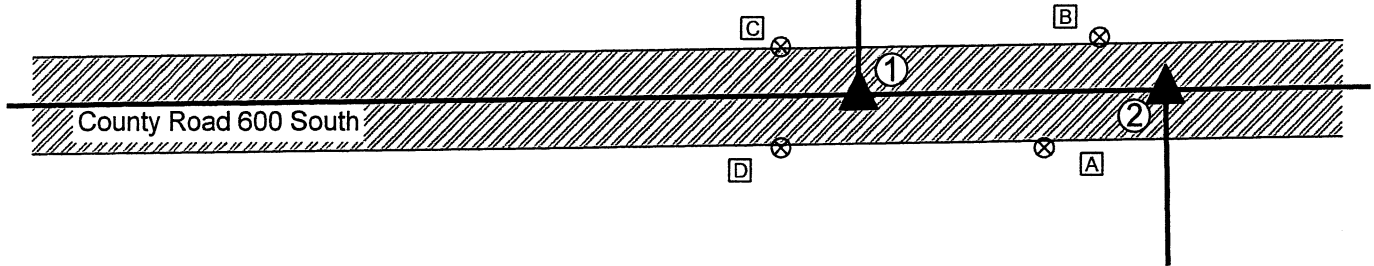


- ① S.E. Corner, Section 35  
S.W. Corner, Section 36  
T 18 N, R 1 W  
Harrison Monument set
- ② N.W. Corner, Section 1  
N.E. Corner, Section 2  
T 17 N, R 1 W  
Position not yet determined



#### TIES TO CORNER 1 ONLY

- A - Boone County witness mark, flush, 40.6'
- B - Boone County witness mark, flush, 51.9'
- C - 5/8" rebar found, flush, 19.4'
- D - 5/8" rebar found, flush, 19.6'
- E - South edge vinyl fence post, flush, 147.8'

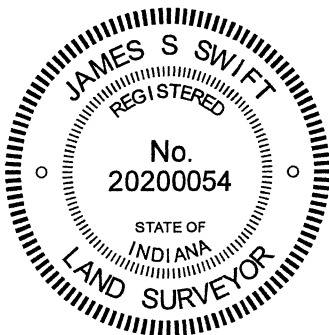


The Harrison monument was set in place of a rebar found. A BCS record of September 9-12, 1857 states, with respect to Corner 1, "Reestablished. Set Rock 5x12." A BCS record of February 11-12, 1867 states, with respect to Corner 2, "Reest. Set stake."

A BCS tie card dated March 18, 1996 shows Corner 1 as a rebar 9.75 feet east of a P.K. Nail.

Corner 1 was excavated on July 31, 2020. Prior to excavation, two mag nails were found at a separation of 60.6 feet east-west. These two nails appeared to have been intended to mark the respective standard and closing corners. However, the offset of 60.6 feet is substantially less than the original federal offset of 103 links or 67.98 feet. Based on extensive analysis of the relative positions of found evidence as correlated with relevant information in the BCS Surveyor's Record entries, it was concluded that the westerly of the nails, ostensibly marking Corner 1 was too far east. Prior to excavation, the westerly of the two nails was removed but no additional metal reading was detected. However, a rebar was found at 6 inches deep in the road bed approximately 4 feet west of the westerly nail, at the estimated position of the corner as shown on the 1996 tie card. Excavation around the rebar and up to 6 feet west did not reveal further ancient evidence of the corner. A railroad spike, perhaps the same monument as shown on the 1996 tie card was found in the immediate vicinity of the found rebar, but the spike had lost the magnetic character which allows it to be detected by a ferrous metal detector / magnetic locator. The spike was disturbed during excavation and the precise location of this monument was not specifically observed. Excavation was performed to 1 foot east, 6 feet west, 2.5 feet north and 2.5 feet south of the found rebar, to a depth of 2 feet, which is below the bottom of the road bed. No further evidence of Corner 1 was found. The position of the rebar found prior to excavation was held to determine the position of the corner. A Harrison monument was set at this position on July 31, 2020.

The precise position of Corner 2 will be determined at a later date, after the south quarter corner of Section 36 is excavated and determined.



*Kenneth E. Hedge*  
 \_\_\_\_\_  
 Kenneth E. Hedge, County Surveyor

*James S. Swift*  
 \_\_\_\_\_  
 James S. Swift, IN LS 20200054  
 March 10, 2021

#### Harrison Township

Section 35 T18N, R1W	Section 36 T18N, R1W
Section 2 T17N, R1W	Section 1 T17N, R1W

# SECTION CORNER RECORD

# SW 650-000

## BOONE COUNTY SURVEYOR'S OFFICE

State Plane grid coordinates NAD83 (2011):

Corner 1: North: 1711128.66 East: 3125116.56 (U.S. survey feet)

Corner 2: North: 1711289.69 East: 3125114.55 (U.S. survey feet)

Corner 1: Harrison, 4" disk 'Section Corner', 6 inches above adjacent ground on sloping bank of ditch.

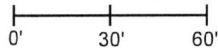
Corner 2: Harrison, 4" disk 'Section Corner', 8 inches above adjacent ground on sloping bank of ditch.

Indiana tie card references:

IN02\_T17NR1W01\_44 IN02\_T17NR1E06\_36

### CORNER WITNESS DETAIL

SCALE 1" = 60'



The Harrison monument at Corner 2 was set with respect to a witness stone found. The Harrison monument at Corner 1 was set at a calculated position.

The most reliable evidence and records for this corner were found with respect to Corner 2, which was set prior to Corner 1. A BCS record of May 8-9, 1911 states, with respect to Corner 2, "Set two rocks. 1 - 2 1/2 links E. of true corner, 6x6x26. 1 - 2 1/2 links W. of true corner, 8x6x12. Cor. in ditch." Excavation on October 9, 2019 revealed the east witness rock found at the southwest edge of an ancient wood corner post on the east bank of the Ross ditch. The post appeared to pre-date recent improvements to and excavation of the ditch. As found, the rock was leaning to the southwest, presumably due to the steep ditch bank immediately to the west. The rock matched the record dimensions for the east witness rock and was accepted as being the same rock. The corner was established at 2 1/2 links (1.65 feet) west of the position of the bottom rock as found and a Harrison monument was set at this position on October 9, 2019. It is noted that the monument falls on the east bank of Ross Ditch. It is also noted that the Ross ditch is evidently much wider at this time than it was in 1911, with almost all of the additional excavation of the ditch to the west of the meridian line.

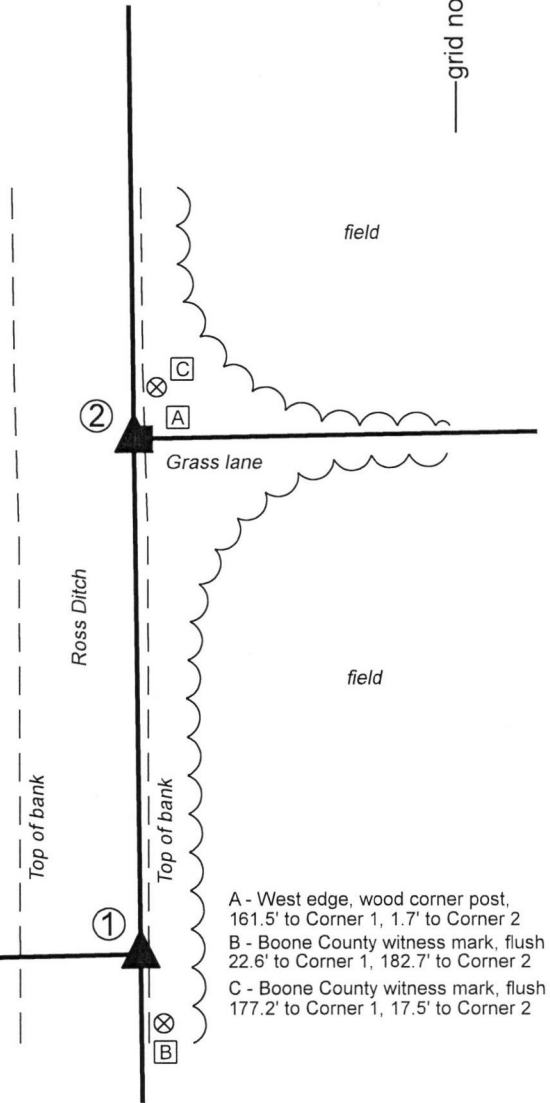
A BCS record of February 11-12, 1867 states, with respect to Corner 1, "Reestablished. Set stake in Prairie." Additional notes associated with that record clearly indicate that Corner 1 was established equidistant from the southeast and northeast corners of Section 1, which agrees with the original federal notes of 1819. No physical evidence of Corner 1 was found, as the corner falls on the east bank of Ross Ditch. The position of Corner 1 was established at 244 links (161.04 feet) (original federal closing for the southwest corner of Section 6) south of Corner 2 on a prolongation of a line from the northeast corner of Section 1 (See BCS corner SW 600-000) through Corner 2. It is noted that this position falls approximately 1 foot south and 2 feet east of the midpoint of a line connecting the southeast and northeast corners of Section 1 and also fits well with evidence of the north line of the southeast quarter of Section 1 in the form of the easterly prolongation of the approximate center County Road 650 South which terminates 1/4 miles west of Corner 1. A Harrison monument was set at Corner 1 on October 14, 2019.

Corner 1 was originally established as a wood post in 1819. Corner 2 is not an original federal corner.

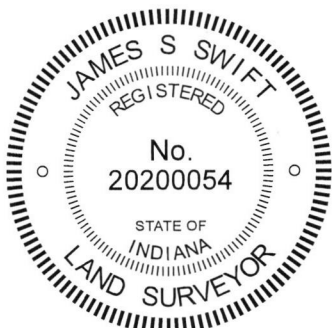
① East Quarter Corner Section 1, T 17 N, R 1 W

② West Quarter Corner Section 6, T 17 N, R 1 E

Distance between monuments: 161.04' (244 links)



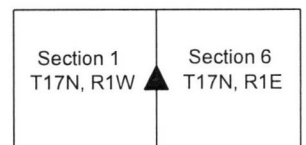
A - West edge, wood corner post, 161.5' to Corner 1, 1.7' to Corner 2  
B - Boone County witness mark, flush 22.6' to Corner 1, 182.7' to Corner 2  
C - Boone County witness mark, flush 177.2' to Corner 1, 17.5' to Corner 2



*Kenneth E. Hedge*  
Kenneth E. Hedge, County Surveyor

*James S. Swift*  
James S. Swift, IN LS 20200054  
November 6, 2019

Harrison Township





# SECTION CORNER RECORD

SW 650-100

## BOONE COUNTY SURVEYOR'S OFFICE

State Plane grid coordinates NAD83 (2011):

North: 1711017.71 East: 3119850.67 (U.S. survey feet)

Type of monument: Harrison, 4" disk 'Section Corner'

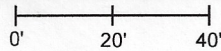
Depth: One inch below adjacent road surface

Indiana tie card references:

IN02\_T17NR1W02\_44 IN02\_T17NR1W01\_36

### CORNER WITNESS DETAIL

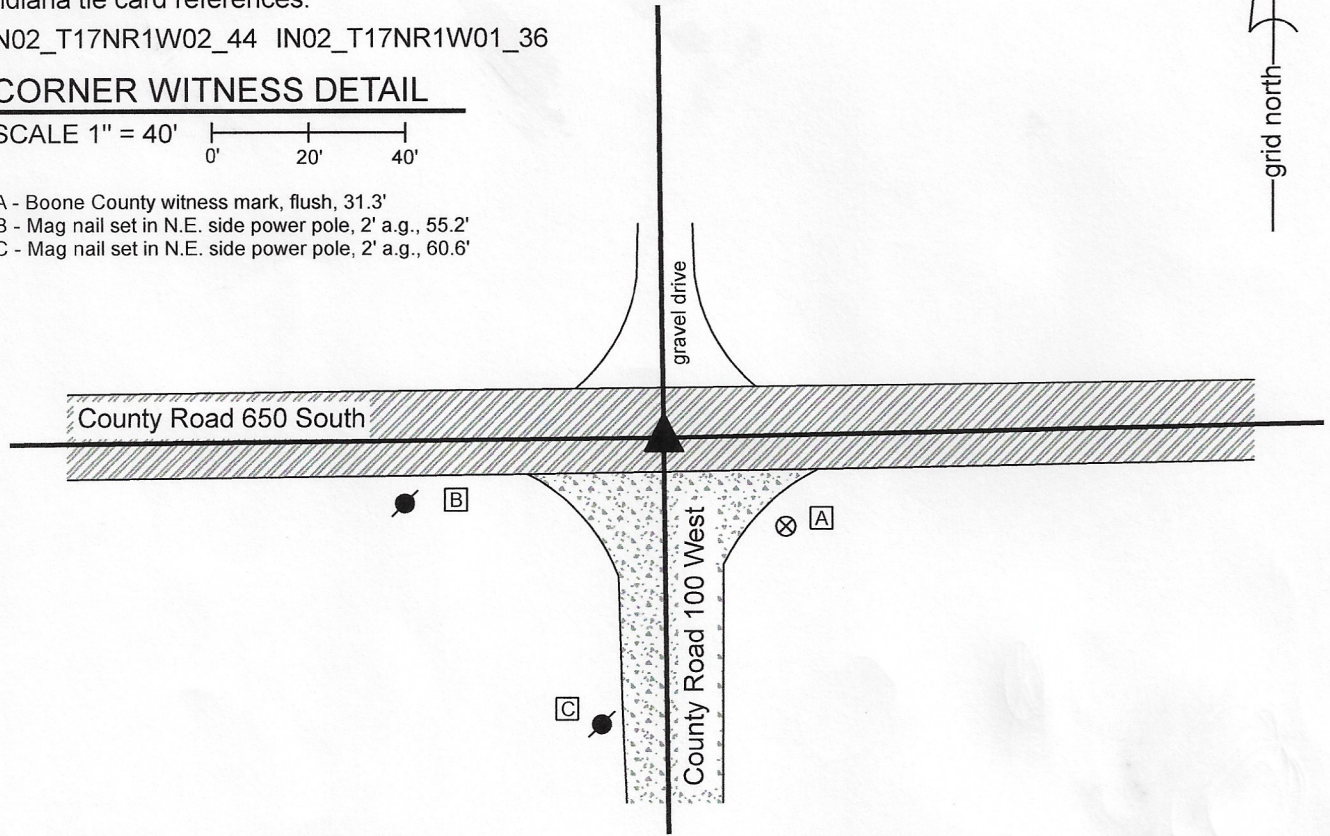
SCALE 1" = 40'



A - Boone County witness mark, flush, 31.3'

B - Mag nail set in N.E. side power pole, 2' a.g., 55.2'

C - Mag nail set in N.E. side power pole, 2' a.g., 60.6'

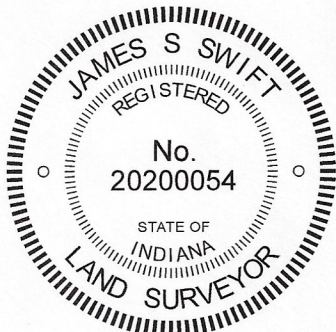


The Harrison monument was set over a stone found.

A BCS record of February 11-12, 1867 states, with respect to this corner, "Reestablished by measurement. Set Rock 21.12.8 marked +." No recent BCS tie cards were found referencing this corner.

Excavation was performed at this corner on July 16, 2020. Prior to excavation, a mag nail was found flush at the intersection of the two roads. The source of the mag nail is not known. Excavation revealed no further evidence directly below the mag nail, but did reveal a stone found at 5 inches deep, slightly southwest of the nail. The stone was observed to be located in the fill material of the road and measured 16 inches E-W by 14 inches N-S by 8 inches tall. No specific markings were observed on the stone. The stone was removed and another stone was found directly below, at 13 inches deep. With the top 5 inches exposed, this stone measured 12 inches N-S by 8 inches E-W and was clearly much larger in the vertical dimension. The stone had a rough surface and no specific marks were detected, though it did have a clear and distinct high point. The stone was embedded in the clay layer below the road, protruding slightly into the bottom of the road bed. The stone was accepted as being the monument described in the 1867 record and was held as marking the corner. A Harrison monument was set directly over the top, high point of the stone. The nail, removed during excavation, had been 1.0 foot north and 0.3 foot east of the top, high point of the stone.

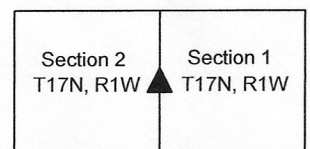
This corner was originally established as a wood post in 1820.



*Kenneth E. Hedge*  
 \_\_\_\_\_  
 Kenneth E. Hedge, County Surveyor

*James S. Swift*  
 \_\_\_\_\_  
 James S. Swift, IN LS 20200054  
 July 21, 2020

Harrison Township



# SECTION CORNER RECORD

SW 700-000

## BOONE COUNTY SURVEYOR'S OFFICE

State Plane grid coordinates NAD83 (2011):

Corner 1: North: 1708464.81 East: 3125145.73 (U.S. survey feet)

Corner 2: North: 1708625.84 East: 3125143.96 (U.S. survey feet)

Type and Depth of Monument:

Corner 1: Harrison, 4" disk 'Section Corner', 6" above adjacent ground

Corner 2: Harrison, 4" disk 'Section Corner', 1" below adjacent road

① S.E. Corner, Section 1  
N.E. Corner, Section 12  
T 17 N, R 1 W

② S.W. Corner, Section 6  
N.W. Corner, Section 7  
T 17 N, R 1 E

Distance between monuments:  
161.04' (244 links)



Indiana tie card references:

IN02\_T17NR1W01\_80 IN02\_T17NR1E06\_72

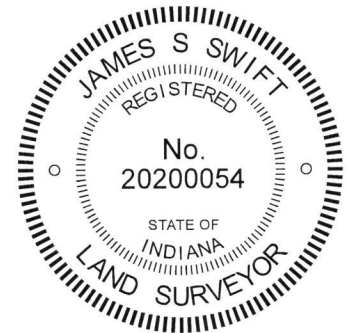
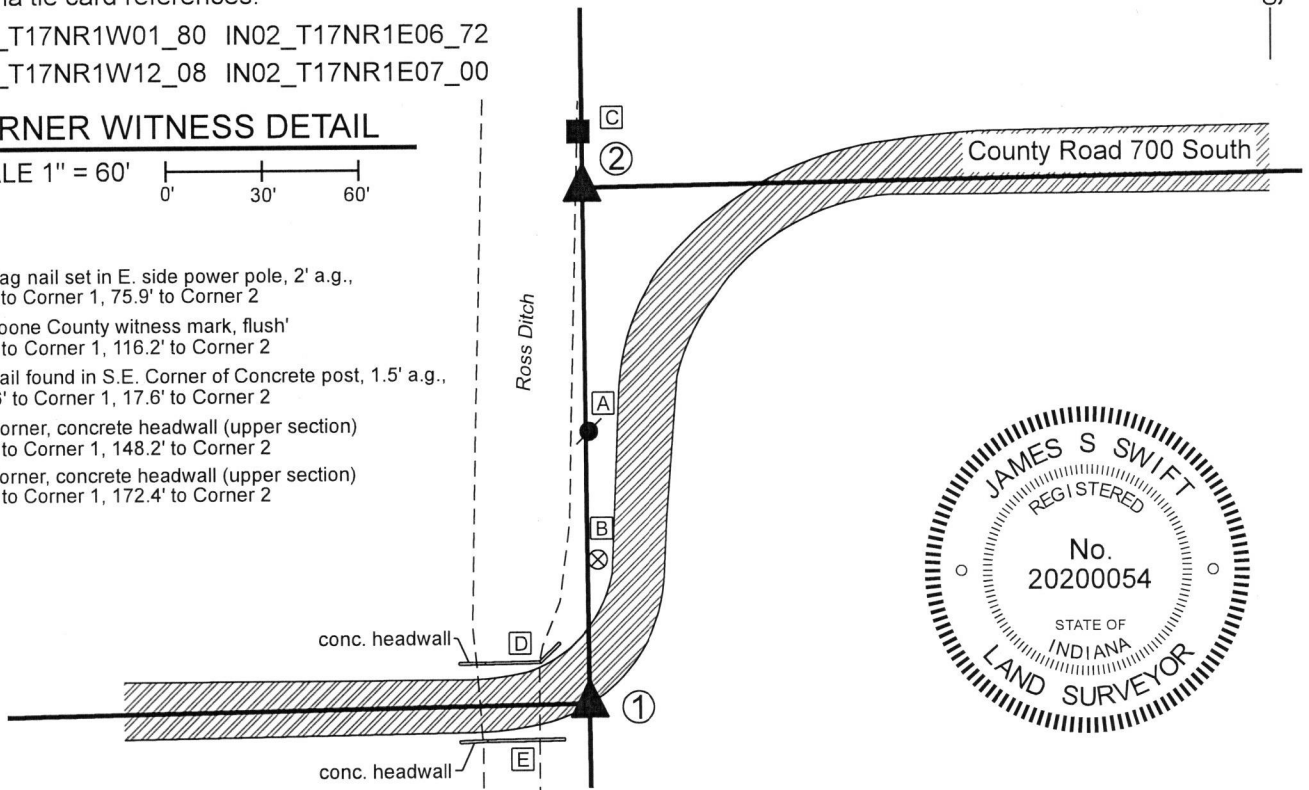
IN02\_T17NR1W12\_08 IN02\_T17NR1E07\_00

### CORNER WITNESS DETAIL

SCALE 1" = 60'



- A - Mag nail set in E. side power pole, 2' a.g., 85.1' to Corner 1, 75.9' to Corner 2
- B - Boone County witness mark, flush' 45.0' to Corner 1, 116.2' to Corner 2
- C - Nail found in S.E. Corner of Concrete post, 1.5' a.g., 178.6' to Corner 1, 17.6' to Corner 2
- D - Corner, concrete headwall (upper section) 20.8' to Corner 1, 148.2' to Corner 2
- E - Corner, concrete headwall (upper section) 18.8' to Corner 1, 172.4' to Corner 2



The Harrison monument at Corner 2 was set in place of a stone found. The Harrison monument at Corner 1 was set at a calculated position. A BCS record dated February 11-12, 1867 states, with respect to Corner 1, "Re Established 39.87 N. of E. qr. Sec. cor of Sec. 12." A BCS record of May 1, 1913 states, with respect to Corner 2, "Est. Set two rocks. One 20 lks West of true corner 10,10,4. One 20 lks East of true corner 8,6,5." A BCS tie card dated April 29, 1992 shows Corner 2 as a stone found.

Both of these corners fall on the east edge of the Ross Ditch. Corner 1 falls at the south edge of the bend in the roadway of C.R. 700 South, amidst fill associated with the concrete bridge over the ditch. The stone called in the 1992 tie card was found, undisturbed. The exact position of the corner was established with respect to two ties, a concrete nail in the southeast corner of a concrete post and a PK nail in the south edge of a multi-trunk tree, both shown as ties on the 1992 tie card. (The tree is dead but standing and the bark was removed to expose the nail.) This point represented the high point of the stone. The stone measured 15 inches N-S by 12 inches E-W by 5 inches tall. A 5/8 inch diameter rebar bearing the cap of Dodge, SO245, was found 1.1 foot east of the high point on the stone. No recorded surveys were found to provide explanation for why the rebar is east of the stone. A search for the east witness stone did not reveal further evidence. The west stone would surely fall within the ditch. It is noted that the stone held in 1992 fits well with evidence of the closing corner in the form of the westerly prolongation of the roadway to the east and fits well with alignment of other corners along the meridian line to both the north and south. It is evident that the Ross Ditch was excavated mostly west of the meridian line.

The stone shown on the 1992 tie card was held as marking Corner 2. The stone was removed and replaced with a Harrison monument on October 10, 2019. Corner 1 was established at the record closing offset distance of 244 links (161.04 feet) on the prolongation of the line from the standard corner 1/2 mile north through Corner 2. This position fits well with the easterly prolongation of C.R. 700 South. A Harrison monument set loosely in the gravel material of the road was found 1 foot east of this position. The monument appears to correlate with the position of the rebar found 1 foot east of Corner 2. No documentation was found for the establishment of monument. It was easily removed with a shovel and a Harrison monument was set in a more durable fashion at the calculated position on October 23, 2019. A survey recorded as Instrument 200800008588 shows Corner 1 as the previously existing Harrison and shows Corner 2 as the concrete post which is actually a witness as shown on the 1992 tie card and held as a witness hereon.

Corner 1 was originally established as a wood post in 1819. Corner 2 was originally established as a wood post in 1820.

### Harrison Township

Section 1 T17N, R1W	Section 6 T17N, R1E
Section 12 T17N, R1W	Section 7 T17N, R1E

*Kenneth E. Hedge*  
Kenneth E. Hedge, County Surveyor

*James S. Swift*  
James S. Swift, IN LS 20200054 11/6/2019



# SECTION CORNER RECORD

SW 700-050

## BOONE COUNTY SURVEYOR'S OFFICE

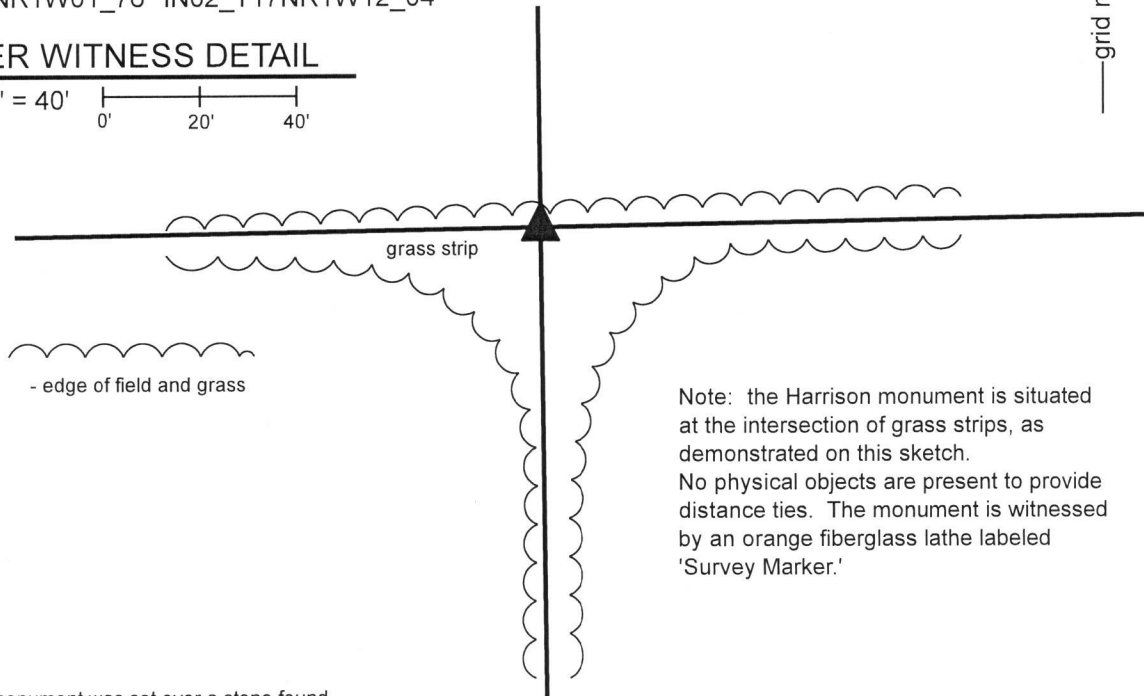
State Plane grid coordinates NAD83 (2011):  
North: 1708418.18 East: 3122511.86 (U.S. survey feet)

Type of monument: Harrison, 4" disk 'Section Corner'  
Depth: Two inches above adjacent ground

Indiana tie card references:  
IN02\_T17NR1W01\_76 IN02\_T17NR1W12\_04

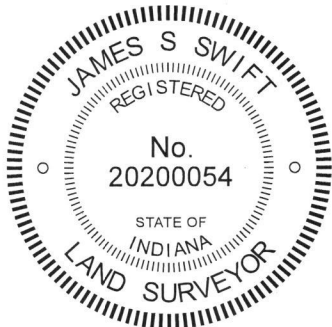
### CORNER WITNESS DETAIL

SCALE 1" = 40'  
0' 20' 40'



Note: the Harrison monument is situated at the intersection of grass strips, as demonstrated on this sketch. No physical objects are present to provide distance ties. The monument is witnessed by an orange fiberglass lathe labeled 'Survey Marker.'

The Harrison monument was set over a stone found. A BCS record dated February 12-13, 1867 states, with respect to this corner, "Reestablished by setting Rock 20.8.5 + on top." No recent BCS tie cards were found referencing the corner. A survey by Brian Rismiller, LS #20200083, recorded in Survey Book 6, page 41-42 in the Office of the Boone County Recorder shows the corner as a "corner post" and demonstrates that this position fits well with surrounding corners. This corner was excavated on June 21 and July 8, 2019. Prior to excavation, no monument or corner post was visible above ground. Owners of adjoining properties had recently stated that a corner post was formerly present and had been broken off below ground level. The position of the post shown on the Rismiller survey was computed with respect to the positions of other monuments and evidence shown on that survey. The base of a round post was found broken-off at 14 inches deep, in agreement with the position shown on the Rismiller survey. A stone was found at the east edge of the base of the post at 32 inches deep. On June 21, 2019, the area was saturated in water and inspection of the stone was not possible. On July 8, 2019 the ground was sufficiently dry to enable exposing the stone. The stone appeared to be leaning toward the south, though oriented specifically north-south. The stone appeared to be of limestone material and was notably rectangular in shape. The upper, southerly end of the stone measured 5 inches by 8 inches, matching the dimensions recorded in the 1867 record. The total height of the stone was not measured. The surface of the stone is not smooth and several possible + marks were observed. None could be positively identified as a mark etched by a surveyor. The stone was accepted as representing the monument called for in the 1867 record. The highest point on the stone, being also the south end of the stone, was held as the specific location of the corner. A Harrison monument was set at this position on July 8, 2019. It is noted that up to 1 foot of uncertainty north-south may be attributed to the position of the corner with respect to the possibility that the stone is leaning. It is also noted that during previous excavations at other corners, some stones have been obviously leaning and those stones were stood up in their natural position in such cases. In this case, such positive determination was not possible and the highest point on the stone was held as marking the corner. The position of the corner is 0.5 foot SSE of the southeasterly edge of the base of the round wood post. This corner was originally established as a wood post in 1820.



*Kenneth E. Hedge*  
Kenneth E. Hedge, County Surveyor

*James S. Swift*  
James S. Swift, IN LS 20200054  
July 23, 2019

Harrison Township

Section 1  
T17N, R1W

Section 12  
T17N, R1W

# SECTION CORNER RECORD

## BOONE COUNTY SURVEYOR'S OFFICE

SW 700-100

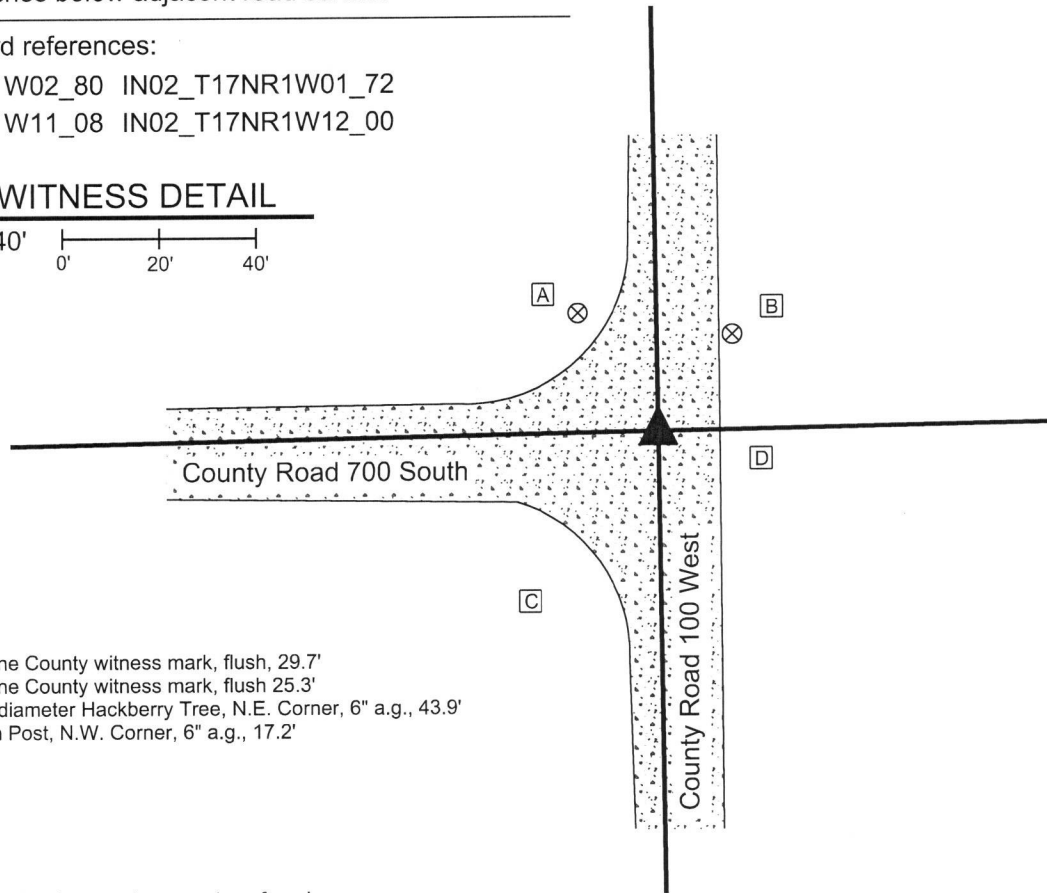
State Plane grid coordinates NAD83 (2011):  
 North: 1708374.10 East: 3119891.04 (U.S. survey feet)

Type of monument: Harrison, 4" disk 'Section Corner'  
 Depth: Six inches below adjacent road surface

Indiana tie card references:  
 IN02\_T17NR1W02\_80 IN02\_T17NR1W01\_72  
 IN02\_T17NR1W11\_08 IN02\_T17NR1W12\_00

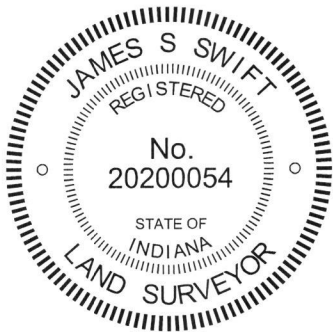
### CORNER WITNESS DETAIL

SCALE 1" = 40'



- A - Boone County witness mark, flush, 29.7'
- B - Boone County witness mark, flush 25.3'
- C - 24" diameter Hackberry Tree, N.E. Corner, 6" a.g., 43.9'
- D - Sign Post, N.W. Corner, 6" a.g., 17.2'

The Harrison monument was set over a stone found.  
 A BCS record of April 23-24, 1881 states, with respect to this corner, "Reestablished from O.B. Tree. Stone as place +." This is interpreted to mean that the position of the corner was found from an original bearing tree and that a stone was placed, or found in place, with an etched + mark. No recent BCS tie cards were found referencing this corner.  
 Excavation was performed at this corner on April 4, 2019. Prior to excavation, a section of 5/8 inch diameter rebar was found in the approximate center of the intersection. The origin of the rebar is not known. As found, the rebar was bent substantially toward the north at approximately 2 inches below grade. Excavation revealed a stone found at 14 inches deep, west and slightly north of the rebar. The top 8 inches of the stone were exposed, at which point the stone measured 9 inches N-S by 9 inches E-W. The stone has a distinct, flat top which is 7 inches N-S by 5 inches E-W. A vague mark was visible on the top of the stone, though it was evident that a road grader has scraped the top of the stone repeatedly, making the mark shallow and hard to confirm as having been purposely etched into the stone. Excavation along the east edge of the stone indicated that it is 12 inches tall. The stone is embedded in the clay layer below the road, protruding approximately 2 inches into the road bed. The stone was accepted as marking the corner and was left in place. A Harrison monument was set directly over the center of the top of the stone. The rebar, removed during excavation, had been 2.9 feet east and 1.1 foot south of the top, center of the stone.  
 This corner was originally established as a wood post in 1820.



*Kenneth E. Hedge*  
 Kenneth E. Hedge, County Surveyor

*James S. Swift*  
 James S. Swift, IN LS 20200054  
 April 30, 2019

Harrison Township

Section 2 T17N, R1W	Section 1 T17N, R1W
Section 11 T17N, R1W	Section 12 T17N, R1W