

SECTION CORNER RECORD

SE 050-300

BOONE COUNTY SURVEYOR'S OFFICE

State Plane grid coordinates NAD83 (NSRS 2007):
North: 1743422.10 East: 3140493.45 (U.S. survey feet)

Type of monument: Harrison, 4" disk 'Section Corner'
Depth: One inch below adjacent road surface

Indiana tie card references:
IN02_T18NR1E03_36
IN02_T18NR1E04_44

CORNER WITNESS DETAIL

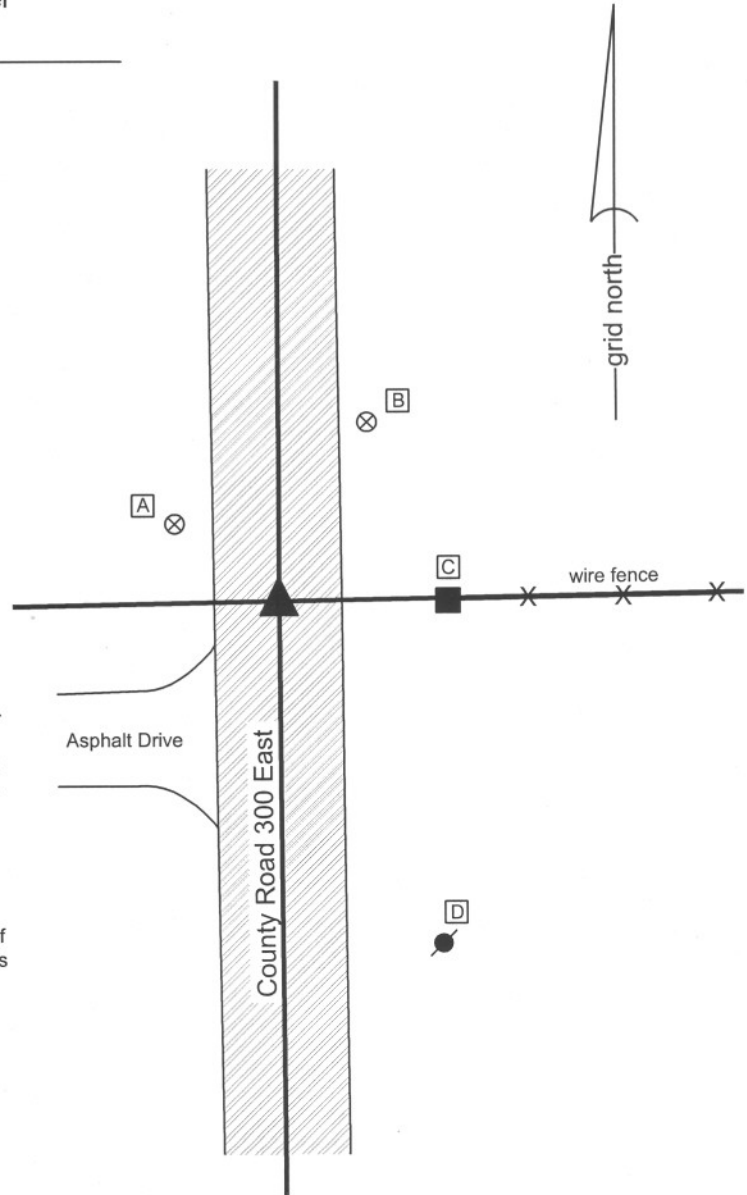
SCALE 1" = 30'
0' 15' 30'

- A - Boone County witness mark, flush, 20.24'
- B - Boone County witness mark, flush, 31.18'
- C - Mag nail set on N. side wood post, 1.2' a.g., 25.80'
- D - Mag nail set on N. side power pole, 2.0' a.g., 57.87'

Boone County witness mark is a 3/8" diameter x 2' long rebar bearing a metal cap stamped "Boone County Witness Point."

The harrison monument was set over the top, center of a stone found. A BCS tie card dated October 25, 2005 calls for a steel rail with no documentation of source. No other specific BCS records were found for this corner, though it is depicted in the record as a terminal point for measurements in 1853 and 1859.

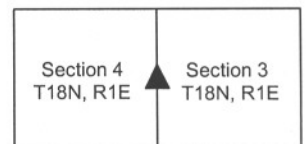
This corner was excavated on October 22, 2009. Prior to excavation a railroad rail was visible in a hole at 4 inches below grade. A stone was found at 6 inches deep, approximately 0.2 foot north and 0.6 foot east of the rail. The stone measures 4 inches N-S by 8 inches E-W by 17 inches tall. The stone was well embedded in the clay layer at the bottom of the road, protruding approximately 4 inches out of the clay and into the bottom layer of the road bed and appeared to be undisturbed. The railroad rail was approximately along the west side of the stone. No documentation was found with respect to the rail and it is not known whether the rail was intended to witness the stone or whether it was intended to represent the actual corner. The rail and the stone were both removed during excavation. The harrison monument was set at the position of the top center of the stone. This corner was originally established as a wood post in June, 1822.



Kenneth E. Hedge
Kenneth E. Hedge, County Surveyor

James S. Swift
James S. Swift, IN LS 20200054
July 14, 2010

Center Township



PHOTOGRAPHIC DOCUMENTATION

Date of photography: October 22, 2009

View of the stone as first exposed, along with the railroad rail.



View of the stone from the south.



View from the north, looking across the stone and south along County Road 300 East.



View from the west, looking across the stone and east along the fence to the east.



For details and documentation, refer to related sheet "Section Corner Record."

SECTION CORNER RECORD

SE 100-200

BOONE COUNTY SURVEYOR'S OFFICE

State Plane grid coordinates NAD83 (NSRS 2007):

North: 1740642.23 East: 3135205.97 (U.S. survey feet)

Type of monument: Harrison, 4" disk 'Section Corner'

Depth: One inch below adjacent road surface

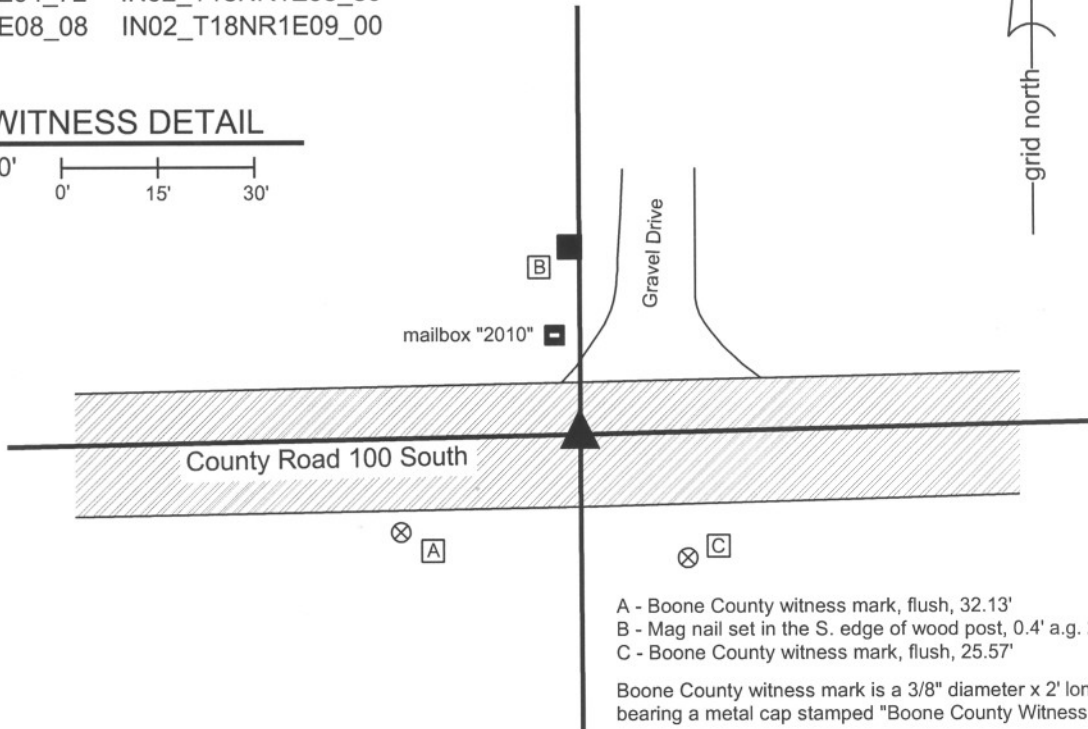
Indiana tie card references:

IN02_T18NR1E04_72 IN02_T18NR1E05_80

IN02_T18NR1E08_08 IN02_T18NR1E09_00

CORNER WITNESS DETAIL

SCALE 1" = 30'



- A - Boone County witness mark, flush, 32.13'
- B - Mag nail set in the S. edge of wood post, 0.4' a.g. 27.38'
- C - Boone County witness mark, flush, 25.57'

Boone County witness mark is a 3/8" diameter x 2' long rebar bearing a metal cap stamped "Boone County Witness Point."

The harrison monument was set over a stone found.

A BCS record of February 9, 1887 states "Re-est. by measure from H-H sec. 9. Set Rock 4,14,19 +" A BCS tie card dated August 16, 1967 shows the corner but makes no mention of a monument. A BCS reference sheet dated July 8, 1989 discusses uncertainties associated with a PK nail found in the vicinity of the corner. A BCS tie card dated June 20, 1991 shows the corner as a railroad rail found. A BCS tie card dated October 21, 2005 shows the corner as a harrison monument with no documentation of source.

This corner was excavated on October 19, 2009. Prior to excavation, a harrison monument was visible at the surface of the road. Excavation revealed a steel railroad rail found on end at 12 inches deep. A rebar was also found on the southwest side of the railroad rail. The harrison monument had been over the rebar. Both the rebar and the rail were removed. A stone was found at 18 inches deep, 1.6 feet North and 2.6 feet East of the position of the harrison monument. The stone is completely embedded in the clay layer below the road bed, with the top of the stone at the top of the clay layer. The stone is 14 inches tall and is not oriented with the cardinal directions. The top of the stone measures 12 inches in the NE-SW dimension and a spur at the bottom of the stone on the southwest side protrudes 2 inches for a total 14 inches. The top of the stone measures 6 inches wide in the NW-SE dimension and a spur on the southeast side protrudes for 3 inches for a total of 9 inches. No visible marks were found. The written record states that the stone is 4,14,9. The stone found measures 14,14,9. The found stone also fits well with the local evidence in the E-W dimension in the form of an old post on the north side of the road. The harrison, railroad rail and rebar were all west of this post. The stone was accepted as the corner and a harrison monument was set over the top center of the main ridge of the stone.

This corner was originally established as a wood post in June, 1820.



Kenneth E. Hedge
 Kenneth E. Hedge, County Surveyor

James S. Swift
 James S. Swift, IN LS 20200054
 July 14, 2010

Center Township

Section 5 T18N, R1E	Section 4 T18N, R1E
Section 8 T18N, R1E	Section 9 T18N, R1E

PHOTOGRAPHIC DOCUMENTATION

Date of photography: October 19, 2009

View of the stone as first exposed.



View of the stone more fully exposed.
View from the west.



View from the south, looking across the stone (hidden behind the corner of pavement), and north to the old post on the north side of the road.



Similar view to above. View from the southwest.



Close-up of the stone as found and exposed.



For details and documentation, refer to related sheet "Section Corner Record."

SECTION CORNER RECORD

SE 100-250

BOONE COUNTY SURVEYOR'S OFFICE

State Plane grid coordinates NAD83 (NSRS 2007):

North: 1740700.63 East: 3137860.28 (U.S. survey feet)

Type of monument: Harrison, 4" disk 'Section Corner'

Depth: One inch below adjacent road surface

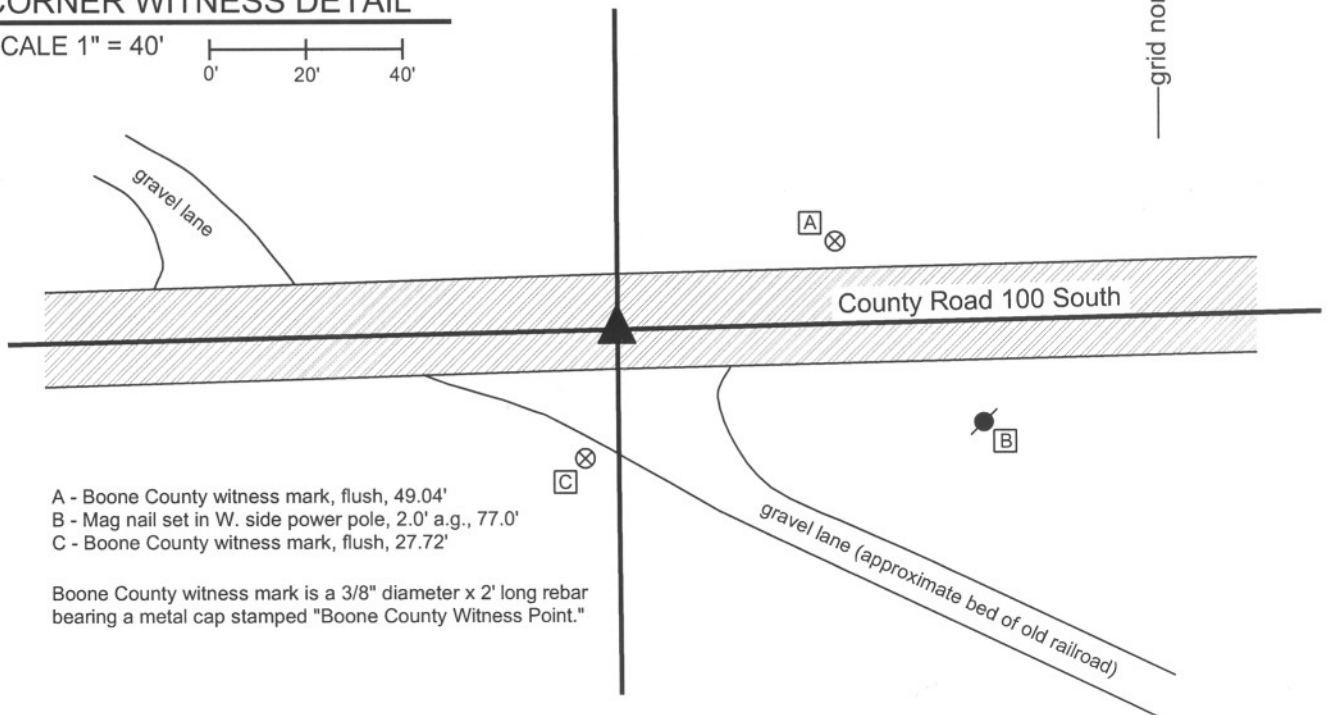
Indiana tie card references:

IN02_T18NR1E03_76

IN02_T18NR1E10_04

CORNER WITNESS DETAIL

SCALE 1" = 40'



- A - Boone County witness mark, flush, 49.04'
- B - Mag nail set in W. side power pole, 2.0' a.g., 77.0'
- C - Boone County witness mark, flush, 27.72'

Boone County witness mark is a 3/8" diameter x 2' long rebar bearing a metal cap stamped "Boone County Witness Point."

The harrison monument was set in place of a harrison monument found.

A BCS record dated May 21, 1870 states "Re from the stump of Red Oak. Set a Rock 20,9,4 +. One under 5,3,3 +." A BCS tie card dated October 21, 2005 shows the corner as a harrison monument with no documentation of source.

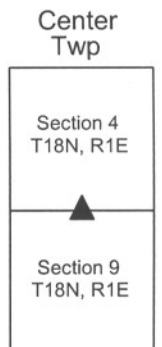
This corner was excavated on October 19, 2009. Prior to excavation, a harrison monument was found at the surface. It is noted that this area is at the east edge of an abandoned railroad bed. The railroad bed is elevated on both sides of the road and clearly would have been elevated as it crossed the road prior to excavation work which smoothed the grade of the road. The probable area for the corner falls within the area which would have been fill when the bed crossed the road in elevated form. No monuments were found below the harrison or in the vicinity. The material cross-section of the road is 4 inches or asphalt over 10 inches of #53 road stone. Large #2 stone was found below this and extends to at least 20 inches deep. It is apparent that this area has been disturbed in the past and the stone bed of the road extends to below the depth at which at section corner stone would likely be found. The harrison monument was set in place of the previously existing harrison.

This corner was originally established as a wood post in June, 1820.



Kenneth E. Hedge
 Kenneth E. Hedge, County Surveyor

James S. Swift
 James S. Swift, IN LS 20200054
 July 14, 2010



SECTION CORNER RECORD

SE 100-300

BOONE COUNTY SURVEYOR'S OFFICE

State Plane grid coordinates NAD83 (NSRS 2007):

North: 1740760.62 East: 3140515.09 (U.S. survey feet)

Type of monument: Harrison, 4" disk 'Section Corner'

Depth: One inch below adjacent road surface

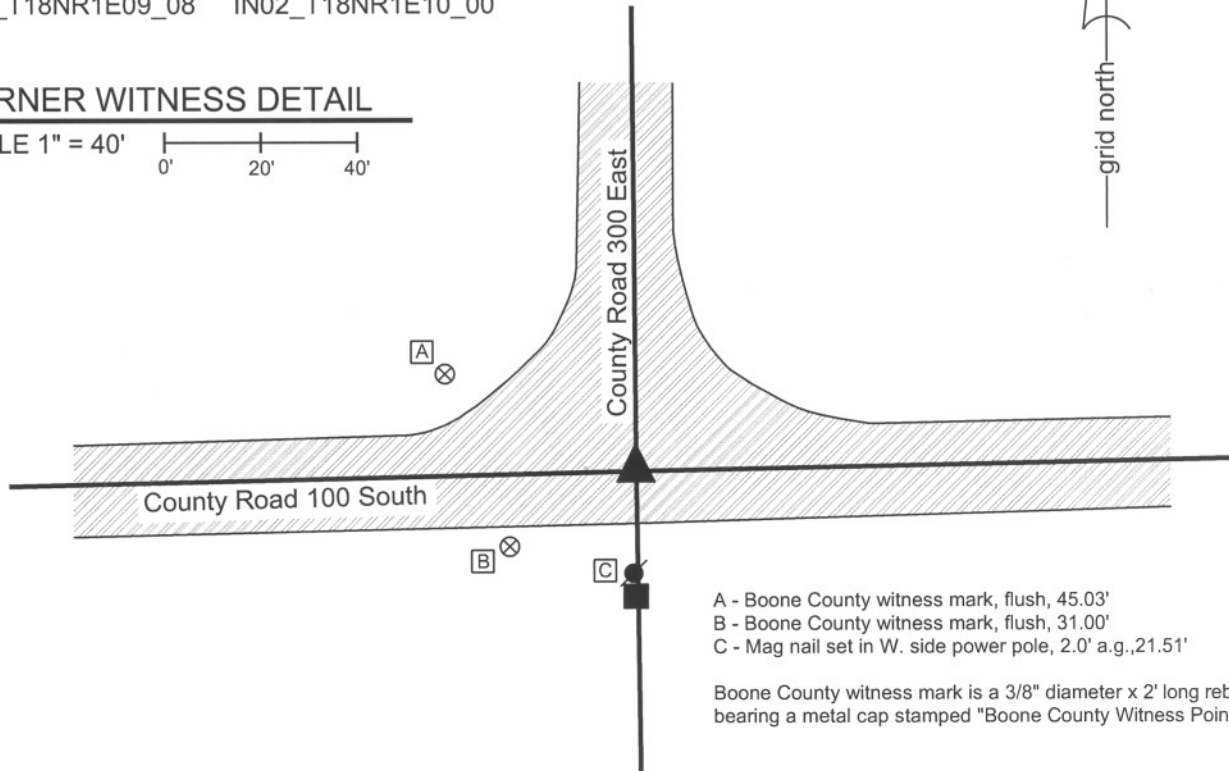
Indiana tie card references:

IN02_T18NR1E03_72 IN02_T18NR1E04_80

IN02_T18NR1E09_08 IN02_T18NR1E10_00

CORNER WITNESS DETAIL

SCALE 1" = 40'



- A - Boone County witness mark, flush, 45.03'
- B - Boone County witness mark, flush, 31.00'
- C - Mag nail set in W. side power pole, 2.0' a.g., 21.51'

Boone County witness mark is a 3/8" diameter x 2' long rebar bearing a metal cap stamped "Boone County Witness Point."

The harrison monument was set over the etched "+" on a stone found.

A BCS record of February 19, 1876 states "Reestablished at the intersection of lines. Set 2 rocks. Lower one 9,9,12 + on top. Upper one 7,12,14 + on top side." A BCS tie card dated October 1975 states "Stone found + rail 6". A BCS information sheet dated August 5, 1989 calls for a railroad rail found. A BCS tie card dated June 20, 1991 shows the corner as a railroad rail found. A BCS tie card dated October 15, 2005 shows the corner as a harrison monument with no documentation of source.

This corner was excavated on August 14, 2009. Prior to excavation a harrison monument was visible at the surface. Excavation revealed a railroad rail found at 12 inches deep. The harrison monument had been 0.2 feet west of the rail. A stone was found at 20 inches deep north and west of the rail. This stone was entirely within the road material and did not match the record descriptions. It was removed. Another stone was found directly below at 25 inches deep. This stone is 14 inches EW by 12 inches NS by 7 inches thick, matching the record description for the upper stone as described in the 1876 record. This stone was also removed. The record lower stone was found below it at 33 inches deep. This stone is 12 inches NS by 9 inches EW and fully embedded in the clay layer below the base of the road. The total height was not measured. A vague chiseled "+" was found at the top, high point of the stone, towards the southeast corner of the stone. The harrison monument was set over the chiseled "+". The old harrison monument had been 0.6 foot south and 0.2 foot east of the chiseled "+" on the stone.

This corner was originally established as a wood post in June, 1820.



Kenneth E. Hedge
 Kenneth E. Hedge, County Surveyor

James S. Swift
 James S. Swift, IN LS 20200054
 July 14, 2010

Center Township

Section 4 T18N, R1E	Section 3 T18N, R1E
Section 9 T18N, R1E	Section 10 T17N, R1E

PHOTOGRAPHIC DOCUMENTATION

Date of photography: August 14, 2009

View of the railroad rail as first exposed.



View of the upper most stone as first exposed.



View of the second stone found, being the upper stone described in the 1876 record.



View of the third stone found, being the lower stone described in the 1876 record.



Close-up of the lower record stone.



The lower record stone. The point of the chaining pin marks the etched mark on the stone.



For details and documentation, refer to related sheet "Section Corner Record."