

WHAT IS A WATERSHED?

A watershed is the land area that drains to a common point, such as a location on a river. All of the water that falls on a watershed will move across the landscape collecting in low spots and drainageways until it moves into the waterbody of choice. A healthy watershed is vital for a healthy river, and a healthy river can enhance the community and helps maintain a healthy local economy.

FOR MORE INFO



[montgomerycoswcd.com/
sugarcreek/](http://montgomerycoswcd.com/sugarcreek/)



Email Kristen Latzke
klatzke@montgomerycoswcd.com
Or Sara Peel, Arion Consultants
speel@arionconsultants.com



765.362.0405 ext 3

WAYS YOU CAN PARTICIPATE

The Upper Sugar Creek Watershed project is looking for volunteers and partners from all backgrounds. Ways you can get involved:

Education and Outreach

- Staff an educational booth
- Spread the word to other groups
- Attend a field day or workshop
- Participate in a watershed clean up
- Attend a listening session
- Attend public meetings

Monitoring

- Become a volunteer stream monitor
- Provide any available data, plans or reports relevant to the watershed
- Participate in float trips, clean up events and on-stream inventory events
- Volunteer to assist with biological sampling within the watershed

Other Efforts

- Assist with watershed inventory efforts
- Help identify water quality project areas
- Help identify on-the-ground practices
- Host a workshop, field day, listening session or community event
- Identify implementation program needs

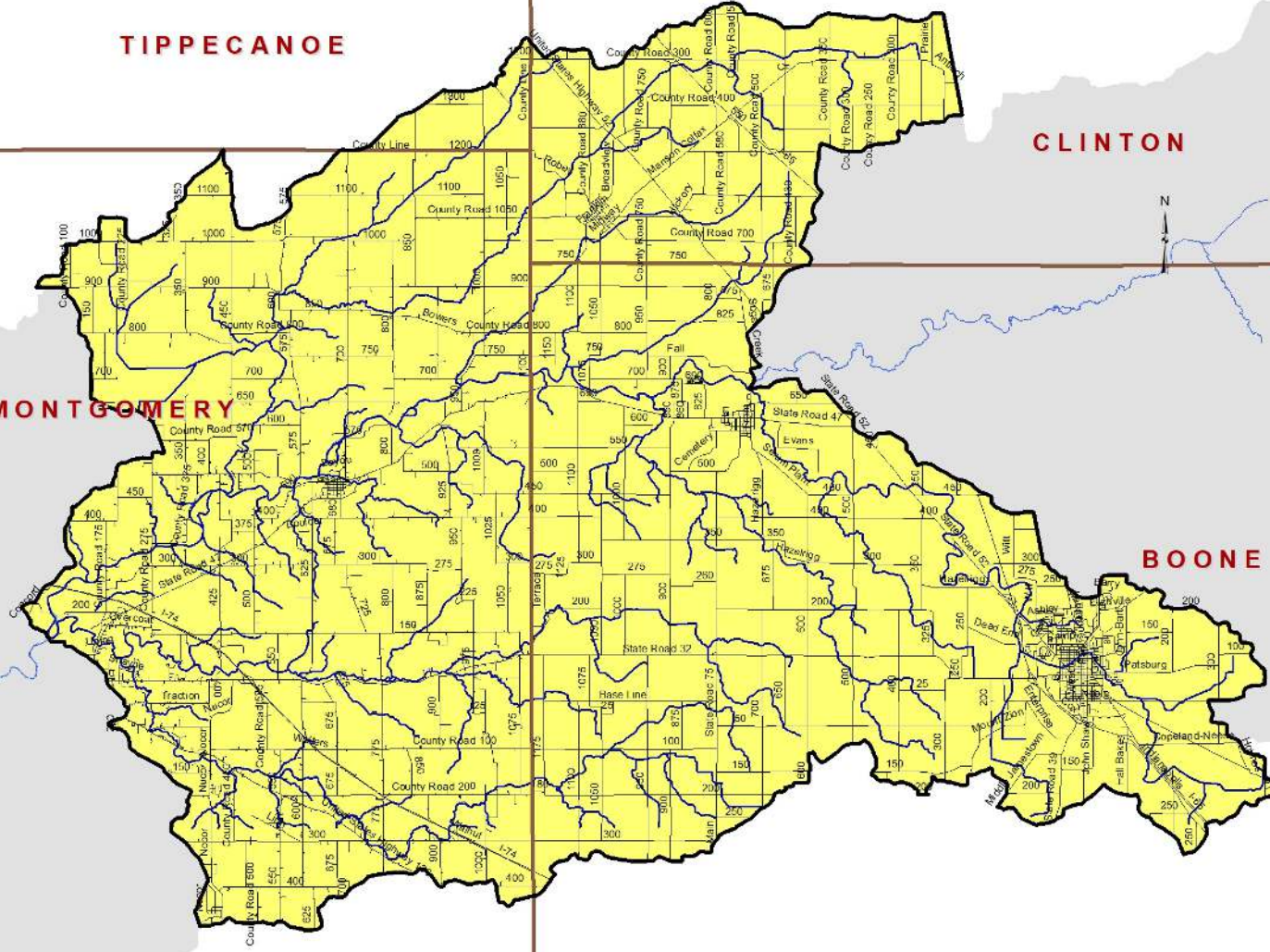
Are you ready to get involved?

**Fill out the form today at
bit.ly/SugarCreekVolunteers**



THE UPPER SUGAR CREEK WATERSHED PROJECT

montgomerycoswcd.com/sugarcreek/



SPECIAL THANKS TO OUR PARTNERS

- Boone, Clinton, Montgomery County Purdue Extensions
- Boone County Surveyors office
- Boone, Clinton, Montgomery, Tippecanoe County Soil & Water Conservation Districts
- Ceres Solutions
- Crawfordsville Mayor Todd Barton
- City of Crawfordsville WWTP
- Clinton County Area Planning Commission
- Clinton County Commissioners
- Clinton County Health Department
- Clinton County Surveyor
- Friends of Sugar Creek
- Hoosier Heartland State Bank
- Indiana American Water
- Indiana State Department of Ag
- Montgomery County Drainage Board
- Montgomery County Health Department
- Montgomery County Surveyor
- Moving Water Outfitters
- NICHES Land Trust
- Pheasants Forever - 462 Coal Creek Chapter
- Purdue University FNR 572
- Sugar Creek Advisory Board
- Tippecanoe County Surveyor-Tri County
- Town of Darlington
- The Nature Conservancy
- Wabash College Democracy and Public Discourse Initiative

Upper Sugar Creek Watershed. See a larger version on our website at Montgomerycoswcd.com/sugarcreek

PROJECT BENEFITS

- Recreation**
Many activities include fishing, kayaking, canoeing, and tubing on lakes and creeks.
- Economic Impact**
Increase property values. Recreation activities drive local businesses for things like canoe rentals and fishing equipment.
- Habitat**
Provides natural habitat for both plants and animals, drawing wildlife to the area.

- Flood Control**
Provides designated areas for water to pool during large rain events.
- Natural Drainage**
Keeps water flowing. Prevents erosion and water backflow in urban areas.
- Water Filtration**
Aides in cleaning wastewater while consuming less energy to do so.

CONSERVATION IS VALUABLE

The goals of this project are intrugal not only to the beautification of the watershed, but also the health and wellbeing of the community. Through these efforts, we hope to also make change through agricultural, economic, and cultural efforts.

