

SECTION CORNER RECORD

NW 000-600

BOONE COUNTY SURVEYOR'S OFFICE

State Plane grid coordinates NAD83 (2011):

North: 1745549.93 East: 3093131.39 (U.S. survey feet)

Type of monument: Harrison, 4" disk 'Section Corner'

Depth: Six inches below adjacent gravel road surface

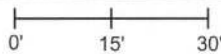
Indiana tie card references:

IN02_T19NR2W36_80 IN02_T19NR1W31_72

IN02_T18NR2W01_08 IN02_T18NR1W06_00

CORNER WITNESS DETAIL

SCALE 1" = 30'



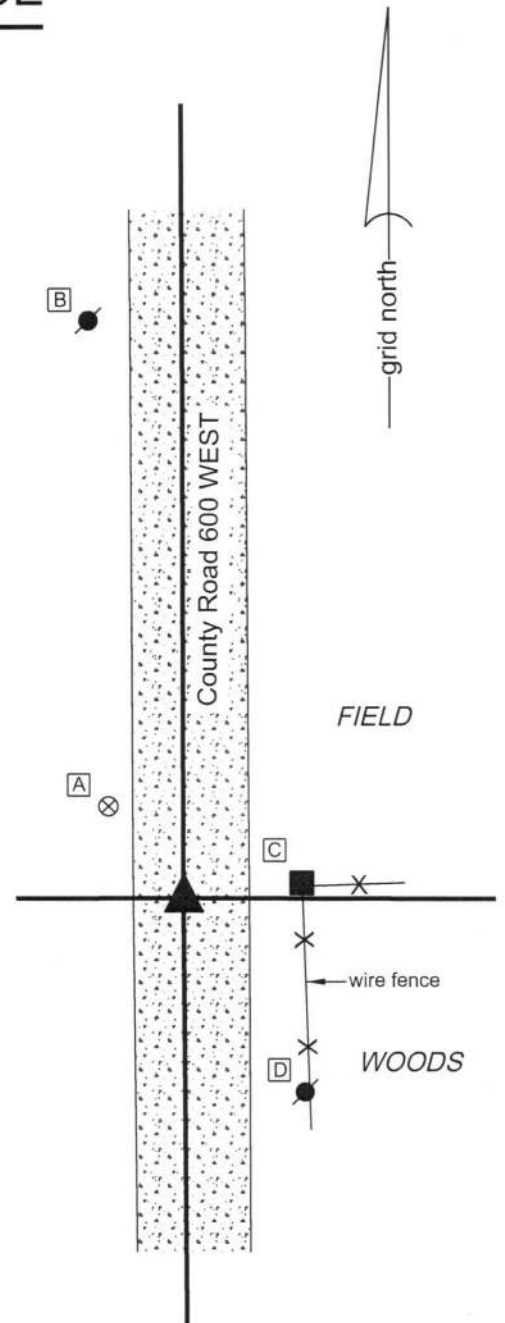
The Harrison monument was set over a stone found.

No specific descriptions of this corner were found in the BCS Surveyor's Record beyond the original establishment of the corner as a wood post in 1819, though the corner is referenced as the terminal point for measurements in records of 1870, 1873, 1874, and 1880, indicating that some object was present at those times from which to measure. It is noted that the roadway of C.R. 600 West is shown as existing on the 1876 map of Boone County, hence the monument held as the corner during the previous surveys would have almost certainly been buried in the road.

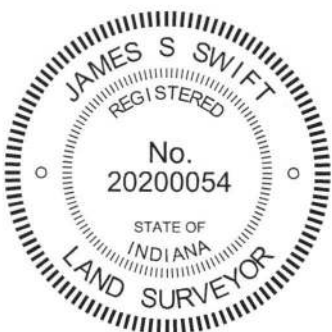
This corner was excavated on June 12, 2018. Prior to excavation, a section of 5/8 inch diameter rebar was found, the source of which is not known. The rebar was in the approximate center of the N-S roadway, in line with the north edge of a wood end post on the east side of the road. Excavation in the vicinity of the rebar revealed two stones found, one on top of the other, with the top of the top stone being 18 inches deep. The top stone was found to be 8 inches tall by 8 inches N-S by 4 inches E-W. The stone was triangular in shape, vertical and oriented N-S with a distinct high point. The stone was sitting on top of another stone which was flat and horizontal, being 10 inches N-S by 10 inches E-W by 4 inches thick. Both stones were embedded in the clay layer below the road bed. Discoloration of the clay was also observed along the west side of the lower stone. This discoloration appeared in the field to represent remnants of a wood stake. The two stones bore the distinct characteristics of monuments set to mark the corner, with the vertical upper stone oriented in cardinal directions and a distinct high point sitting over horizontal base stone. As noted above, the corner is mentioned in several records from 1870 to 1880. Comparison of the records from this period with evidence found in the field at numerous other corners throughout the county has yielded the observation that, if no monument was present, the surveyors of that era would determine a position for the corner and set a monument, typically a stone. However, if a stone were already present marking the corner, the surveyors may not mention the monument. It is believed they would hold its position, note the measurements which were tied to it and either make no mention of the existing monument, or, in some cases, note the corner to be marked by "a stone that was set."

The two stones were accepted as providing the best evidence of the original position of the corner and are believed to have been present as early as 1870. The position of the top of the top stone was held as marking the corner. The top stone was removed. The lower stone was left in place and a Harrison monument was set over it. The rebar, removed during excavation, had been 2.4 feet north and 0.4 foot west of the rebar. It is noted that the rebar fit generally with the evidence of the wood post on the east side of the road, but per the rationale described above, the found stones are considered the superior evidence of the original position of the corner.

This corner was originally established as a wood post in 1819.



- A - Boone County witness mark, flush, 18.4'
- B - E. edge, base of metal power pole 838-3441, 90.0'
- C - Mag nail set in W. side wood post, 2' a.g., 18.7'
- D - Mag nail set in W. side power pole, 2' a.g. 35.1'



Kenneth E. Hedge
Kenneth E. Hedge, County Surveyor

James S. Swift
James S. Swift, IN LS 20200054
June 27, 2018

Jefferson Township

Section 36 T19N, R2W	Section 31 T19N, R1W
Section 1 T18N, R2W	Section 6 T18N, R1W

SECTION CORNER RECORD

BOONE COUNTY SURVEYOR'S OFFICE

NW 000-650

State Plane grid coordinates NAD83 (2011):

Corner 1: North: 1745543.08 East: 3090486.79 (U.S. survey feet)

Corner 2: North: 1745542.79 East: 3090505.18 (U.S. survey feet)

Type of monument: Harrison, 4" disk 'Section Corner'

Depth: Two to three inches below adjacent road/ground surface

Indiana tie card references:

IN02_T19NR1W15_80 IN02_T19NR1W14_72

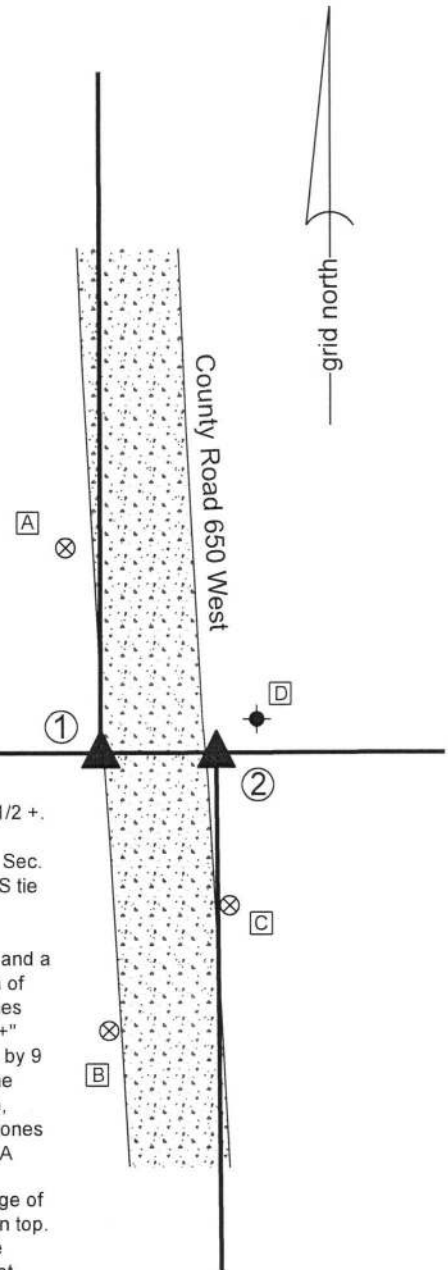
CORNER WITNESS DETAIL

SCALE 1" = 30'

- ① South Quarter Corner
Section 36, T19N, R2W
Harrison Monument Set
 - ② North Quarter Corner
Section 1, T18N, R2W
Harrison Monument Set
- Distance between monuments: 18.4' (record distance 27 1/2 links = 18.15')

- A - Boone County witness mark, flush, 32.4' to Corner 1, 40.1' to Corner 2
- B - Boone County witness mark, flush, 43.2' to Corner 1, 46.2' to Corner 2
- C - Boone County witness mark, flush, 31.1' to Corner 1, 23.4' to Corner 2
- D - Steel Tpost in white PVC sleeve, 25.2' to Corner 1, 8.3' to Corner 2

Boone County witness mark is a 3/8" diameter x 2' long rebar bearing a metal cap stamped "Boone County Witness Point."



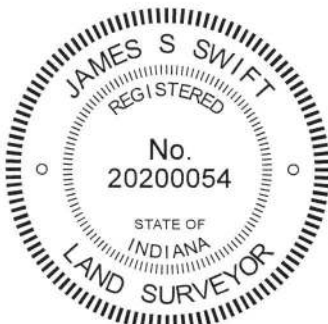
The Harrison monuments were set over stones found.

A BCS record of May 11, 1870 states, with respect to Corner 1, "Reestablished. Set two Rocks. 6,5,3 1/2 +. Top one 11, 8, 6 +." Another BCS record of the same date, referencing primarily Corner 2, states "Reestablished set two rocks. One rock 5 1/2, 5, 4 marked +. Top rock 14.12.9 marked +. Sec. cor for Sec. 36 bears west 27 1/2 [links] where set two rocks. One 6,5,3 1/2 +. Top one 11, 8, 6 +." No recent BCS tie cards were found referencing this corner.

Excavation was performed at this corner on December 18, 2017. Prior to excavation, the only known evidence of the corners included the N-S gravel roadway which jogs slightly in the vicinity of the corner and a field division to the east, marked with a steel T-post in a white PVC plastic sleeve. Excavation in search of Corner 1 yielded the discovery of both rocks called for at that corner. The top rock was found at 11 inches deep at the west edge of the roadway. The stone had a distinct high point and a clearly visible etched "+" mark on the north, sloping side of the top. The stone was removed and found to measure 12 inches tall by 9 inches N-S by 7 inches E-W (one inch larger than the record dimension in each direction). Another stone was found at 22 inches deep, directly below the top stone. This stone had a distinct "+" mark on the top, center. The stone measured 6 inches N-S by 7 inches E-W. The height was not measured. The two stones were accepted as the monuments referenced in the 1879 record and were held as marking the corner. A Harrison monument was set over the "+" mark on the lower stone.

Excavation at Corner 2 revealed the record lower stone for that corner at 24 inches deep on the east edge of the roadway. The top of this stone measured 6 inches by 6 inches and had a distinct etched "+" mark on top. In December, 2017, a rebar was set over the + mark on the stone to mark the position of the stone. The rebar was replaced with a Harrison monument on July 6, 2018. It is noted that the Harrison monument at Corner 2 is directly over the + mark on the stone, 0.3 foot south of the township line, as determined by Corner 1 and the corner one-half mile east (see Corner NW 000-600).

Corner 1 was originally established as a wood post in 1819. Corner 2 was not established as part of the original federal survey.



Kenneth E. Hedge
Kenneth E. Hedge, County Surveyor

James S. Swift
James S. Swift, IN LS 20200054
August 15, 2018

Jefferson Township

Section 36
T19N, R2W

Section 1
T18N, R1W

SECTION CORNER RECORD

NW 000-700

BOONE COUNTY SURVEYOR'S OFFICE

State Plane grid coordinates NAD83 (2011):
 North: 1745539.02 East: 3087834.77 (U.S. survey feet)

Corner 1: Harrison, 4" disk 'Section Corner',
 4 inches below adjacent road surface
 Corner 2: Final position not yet established

Indiana tie card references:
 IN02_T19NR2W36_72 IN02_T19NR2W35_80
 IN02_T18NR2W02_08 IN02_T18NR2W01_00

CORNER WITNESS DETAIL

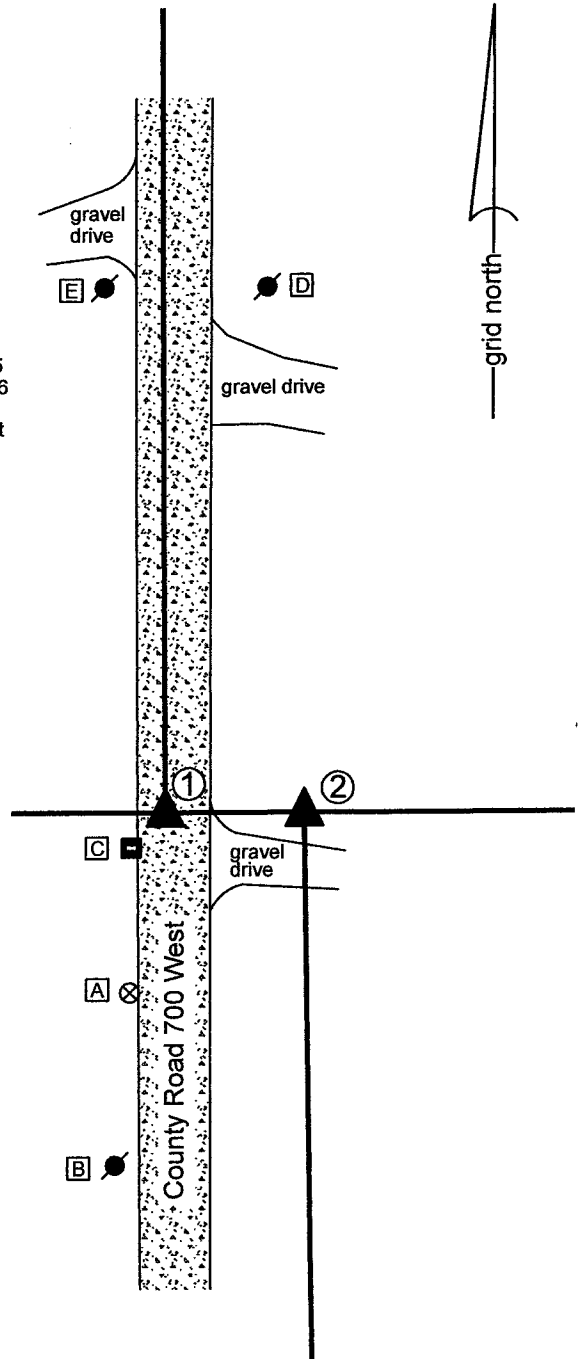
SCALE 1" = 50'
 0' 25' 50'

ALL TIES TO CORNER 1 ONLY

- A - Boone County witness mark, flush, 47.6'
- B - Mag nail set in E. side power pole, 2' a.g., 92.6'
- C - S.E. corner mailbox '35 South', 3" a.g., 12.8'
- D - Mag nail set in S. side power pole, 2' a.g., 139.3'
- E - Mag nail set in E. side power pole, 2' a.g., 137.6'

- ① S.E. Corner, Section 35
 S.W. Corner, Section 36
 T 19 N, R 2 W
 Harrison Monument Set
- ② N.W. Corner, Section 1
 N.E. Corner, Section 2
 T 18 N, R 2 W
 Final position of corner
 not yet established

The Harrison monument was set in place of a rebar found.
 A BCS tie card of May 11, 1870 states, with respect to Corner 1, "Reestablished by measuring lap from corner Sects 1 & 12. Also Elm stump here. Set Rock 19,15,6 marked +."
 A tie card dated November 27, 2000 which was submitted to this office by INDOT shows Corner 1 as a rebar & cap.
 Corner 1 was excavated on December 15, 2021. Prior to excavation, a 5/8-inch diameter rebar was found per the 2000 INDOT tie card. No monument was found marking Corner 2. Excavation at Corner 1 revealed no further evidence of the corner. It is known that the old Interurban Railroad previously existed in this area, generally situated along the line between T18N and T19N and evidence of the old railroad bed has been found approximately 1/4 mile to the west. During excavation, substantial evidence of previous disruption of the old road bed was observed. The typical stratification of the layers of the road bed were observed to be more mixed in this excavation. A layer of sand fill was observed to exist from 1 foot deep to approximately 1.5 feet deep on the east side of the excavation area but was observed to be deeper on the west side. A layer of mud and clay was observed on the south side of the excavation area, but not the north. During the process of excavation, it appeared in the field that the road bed had been previously disrupted, presumably as part of the process of installing, then removing the railroad bed. This is not proven but may account for why the stone called in the 1870 record was not found. Previous probing and manual excavation in the vicinity of Corner 2 also revealed no evidence of the corner. The found rebar fit well with the federal closing distances for the line between Sections 1 and 2, T18N, R2W and fit with tree line evidence of the corner to both the east and west. The rebar was held as marking the corner and was replaced with a Harrison monument on December 15, 2021. The final position of Corner 2 will be determined at a later date.
 Corner 1 was originally established as a wood post in 1819. Corner 2 was originally established as a wood post 55 links (36.3 feet) east of Corner 1 in 1820.



Kenneth E. Hedge
 Kenneth E. Hedge, County Surveyor

James S. Swift
 James S. Swift, IN LS 20200054
 December 20, 2021

Jefferson Township

Section 35 T19N, R2W	Section 36 T19N, R2W
Section 2 T18N, R2W	Section 1 T18N, R2W

SECTION CORNER RECORD

NW 050-600

BOONE COUNTY SURVEYOR'S OFFICE

State Plane grid coordinates NAD83 (2011):

Corner 1: North: 1748192.36 East: 3093123.21 (U.S. survey feet)

Corner 2: North: 1748177.14 East: 3093123.25 (U.S. survey feet)

Type of monument: Harrison, 4" disk 'Section Corner'

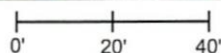
Depth: Six inches below adjacent gravel road surface

Indiana tie card references:

IN02_T19NR2W36_44 IN02_T19NR1W31_36

CORNER WITNESS DETAIL

SCALE 1" = 40'



- ① East Quarter Corner
Section 36
T 19 N, R 2 W
- ② West Quarter Corner
Section 31
T 18 N, R 1 W

Distance between monuments: 15.22'
Record distance: 15.18' (23 links)

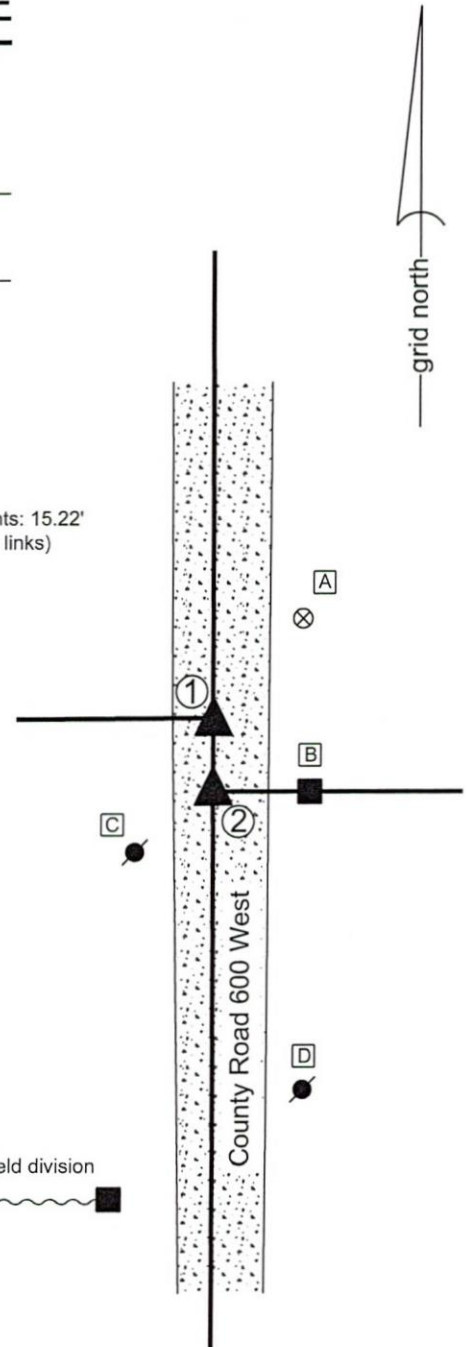
The Harrison monument at Corner 1 was set in place of a stone found. The Harrison monument at Corner 2 was set at a position calculated relative to Corner 1 and record references. A BCS record dated April 30, 1867 states, with respect to Corner 1, "Reestablished. Set Rock. Top One 8 1/2, 7, 4 marked + on top. Under one 6, 5 1/2, 2 1/2." A BCS record dated September 11, 1873 states, with respect to Corner 2, "23 links S. of D Sec. 36." This record makes no mention of a monument set or found at Corner 2 but does establish the offset between the two corners as the average of the original closing distance of 0 links at the southeast corner of section 36 and 46 links at the northeast corner of section 36.

An undated BCS tie card references Corner 1 but appears to graphically demonstrate Corner 2 (fence to the east). The tie card states "No stone."

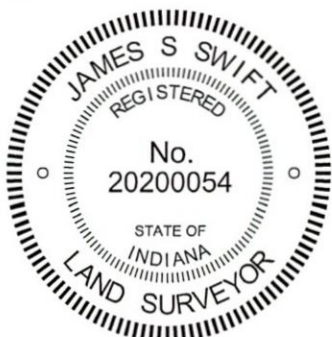
Both of these corners were excavated on September 13, 2018. Prior to excavation, a section of 5/8 inch rebar with a yellow cap (markings illegible) was found at the surface of the road, substantially disturbed, in the vicinity of Corner 2. No metal monuments were found in the vicinity of Corner 1. It is noted that the local evidence of the corners, in the form of an old wood post on the east side of the road, witnessed Corner 2. The only visible evidence of Corner 1 was the north-south roadway. Analysis of the relative positions of the rebar and the corner to the south (see Corner NW 000-600) indicated that the position of the wood post and rebar providing evidence of Corner 2 fit well with measurements reported in the 1873 record. Excavation centered on the found rebar revealed no further evidence of Corner 2. Excavation in search of Corner 1, at a point in the center of the roadway, 23 links north of the post and rebar, revealed a stone found at 9 inches deep. The stone was embedded in the clay layer below the road, vertical, and oriented in cardinal directions. The stone measured 14 inches tall by 14 inches N-S by 9 inches E-W. This stone does not appear to be either of the monuments described in the 1867 record but was clearly a stone set by humans in a purposeful manner, ostensibly to mark the corner. The position of the stone fit remarkably well with the available evidence of Corner 2, the reported 23 link offset, and the measurements reported in the 1873 record. The stone was accepted as the best available evidence of the corner. The stone was removed and replaced with a Harrison monument in the same position as the top, center of the stone as found.

The position of Corner 2 was established on the range line as defined by Corner 1 and Corner NW 000-600. Corner 2 was set at 23 links, with a scale factor indexed to the variations between the old records and current measurements. The specific position of Corner 2 was established at 15.22 feet south of Corner 1. This position fits well with the wood post on the east side of the road and is 0.5 foot north and 0.5 foot east of the position of the rebar found prior to excavation and removed during excavation.

Corner 1 was originally established as a wood post in 1819. Corner 2 is not an original federal corner.



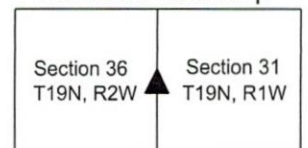
- A - Boone County witness mark, flush 27.8' to Corner 1, 40.4' to Corner 2
- B - Mag nail set in N. side wood post, 2' a.g. 25.0' to Corner 1, 20.4' to Corner 2
- C - Mag nail set in N. side power pole, 2' a.g. 77.9' TO Corner 1, 63.2' to Corner 2
- D - East edge, base of metal power pole 31.2' to Corner 1, 19.2' to Corner 2



Kenneth E. Hedge
Kenneth E. Hedge, County Surveyor

James S. Swift
James S. Swift, IN LS 20200054
September 19, 2018

Jefferson Township



SECTION CORNER RECORD

BOONE COUNTY SURVEYOR'S OFFICE

NW 050-700

State Plane grid coordinates NAD83 (2011):

North: 1748167.53 East: 3087816.23 (U.S. survey feet)

Type of monument: Harrison, 4" disk 'Section Corner'

Depth: six inches below adjacent gravel road surface

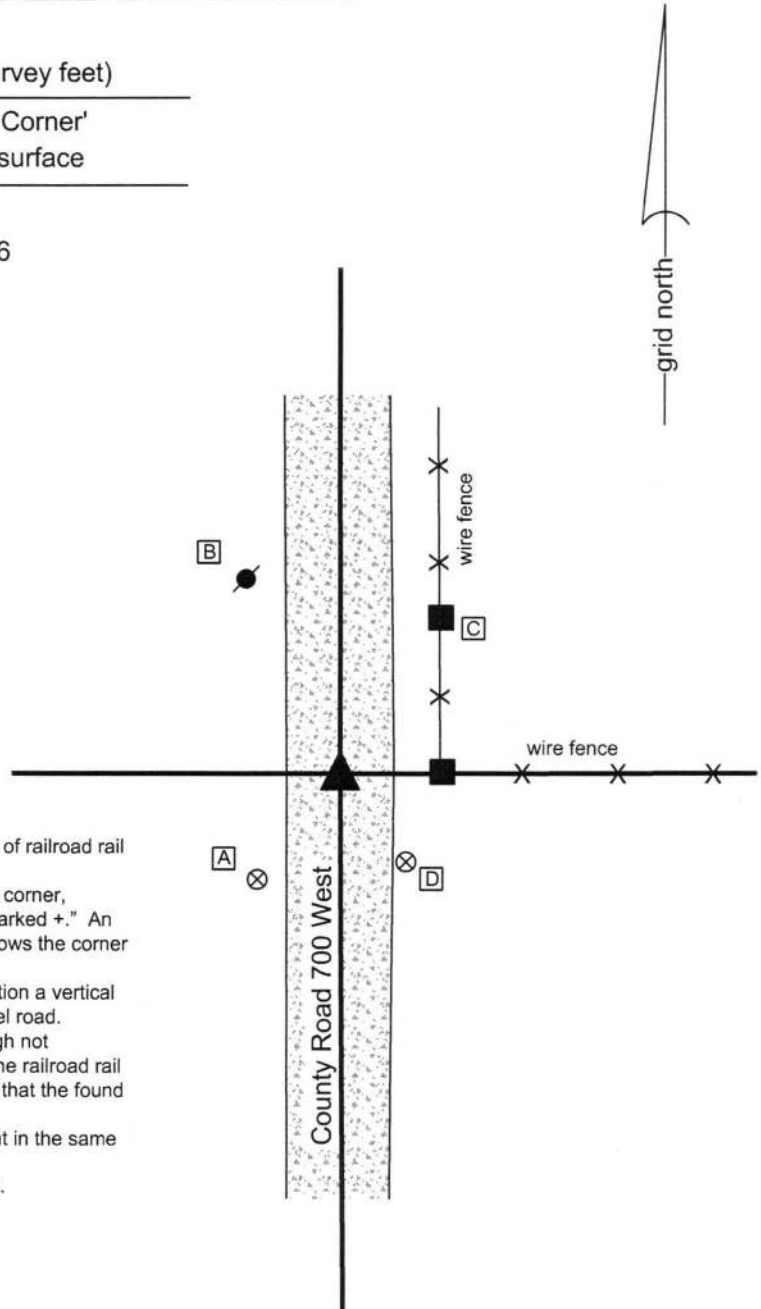
Indiana tie card references:

IN02_T19NR2W35_44 IN02_T19NR2W36_36

CORNER WITNESS DETAIL

SCALE 1" = 40'

- A - Boone County witness mark, flush, 27.8'
- B - Mag nail set in S.E. side power pole, 2' a.g., 43.2'
- C - Mag nail set in W. side power pole, 1 a.g., 38.1'
- D - Boone County witness mark, flush, 22.8'



The Harrison monument was set in place of a vertical section of railroad rail found.

A BCS record dated May 11, 1870 states, with respect to this corner, "Reestablished from Oak down but here. Set Rock 20,6, 8 marked +." An undated BCS tie card believed to date from the late 1960s shows the corner as "Found Stone."

This corner was excavated on July 19, 2016. Prior to excavation a vertical section of railroad rail was found at 7 inches deep in the gravel road. Excavation revealed no further evidence of the corner. Though not specifically stated on the undated tie card, it is believed that the railroad rail was set in association with the creation of that document and that the found stone was most likely removed and replaced with the rail.

The rail was removed and replaced with a Harrison monument in the same position.

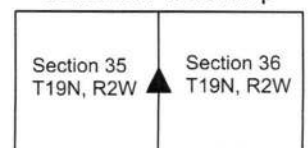
This corner was originally established as a wood post in 1822.



Kenneth E. Hedge
 Kenneth E. Hedge, County Surveyor

James S. Swift
 James S. Swift, IN LS 20200054
 March 23, 2017

Jefferson Township



SECTION CORNER RECORD

NW 100-600

BOONE COUNTY SURVEYOR'S OFFICE

State Plane grid coordinates NAD83 (2011) U.S. Survey feet:

Corner 1: North: 1750828.27 East: 3093116.03

Corner 2: North: 1750797.91 East: 3093116.12

Corner 1: Mag nail with washer, flush

Corner 2: INDOT Type B Monument

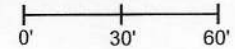
Indiana tie card references:

IN02_T19NR2W25_80 IN02_T19NR1W30_72

IN02_T19NR2W36_08 IN02_T19NR1W31_00

CORNER WITNESS DETAIL

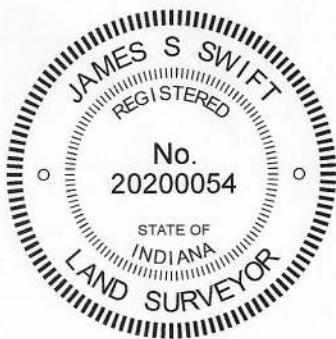
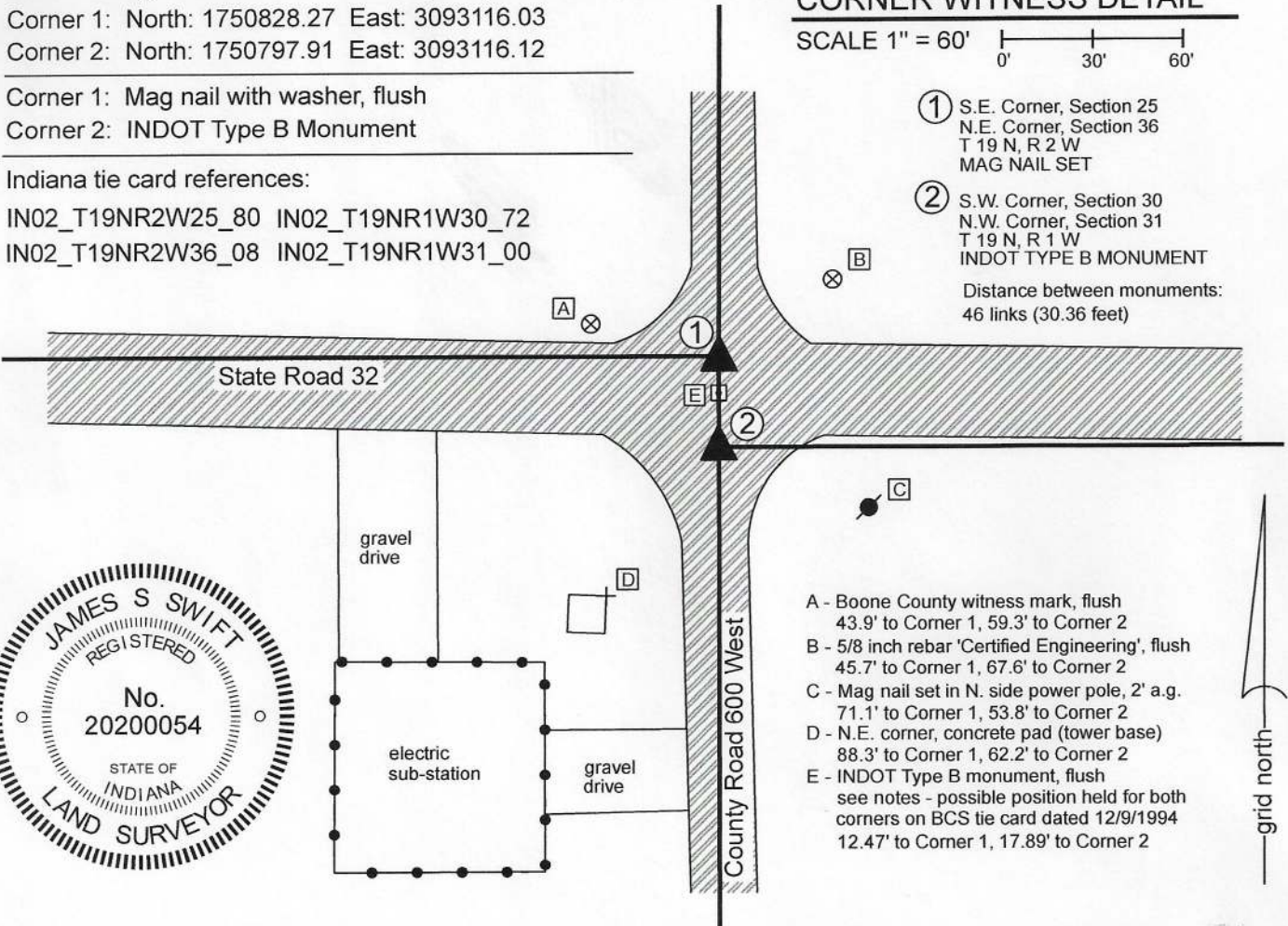
SCALE 1" = 60'



① S.E. Corner, Section 25
N.E. Corner, Section 36
T 19 N, R 2 W
MAG NAIL SET

② S.W. Corner, Section 30
N.W. Corner, Section 31
T 19 N, R 1 W
INDOT TYPE B MONUMENT

Distance between monuments:
46 links (30.36 feet)



- A - Boone County witness mark, flush
43.9' to Corner 1, 59.3' to Corner 2
- B - 5/8 inch rebar 'Certified Engineering', flush
45.7' to Corner 1, 67.6' to Corner 2
- C - Mag nail set in N. side power pole, 2' a.g.
71.1' to Corner 1, 53.8' to Corner 2
- D - N.E. corner, concrete pad (tower base)
88.3' to Corner 1, 62.2' to Corner 2
- E - INDOT Type B monument, flush
see notes - possible position held for both
corners on BCS tie card dated 12/9/1994
12.47' to Corner 1, 17.89' to Corner 2

The INDOT Type B monument was found and held as marking Corner 2. The Mag nail with washer "Boone County Surveyor" marking Corner 1 was set at the record federal closing distance of 46 links (30.36 feet) northerly of Corner 2.

The original federal notes of 1822 show the closing corner (Corner 2) as being 46 links south of the standard corner (Corner 1). A BCS record of September 4, 1865 states, with respect to Corner 1 and referencing Corner 2, "Reestablished by measuring the lap 46 links from the corner of Sects. 30 & 31. Set a Rock 12, 11, 7 marked." No specific descriptions of Corner 2 were found in the BCS Surveyor's Record beyond the original establishment of the corner in 1822. A BCS tie card dated December 9, 1994 shows Corner 1 as a P.K. Nail with washer. The sketch does not appear to take into account the 46 links offset at Corner 1 and demonstrates the corner to be at the center of the intersection of the two roads. Although the tie card states that the specific corner is the standard corner (Corner 1), the sketch demonstrates the section line bearing east and west from the corner with no offset.

Two INDOT Type B monuments were found at this intersection. Both monuments are referenced on a Survey Monument Replacement Surveyor's Report recorded as Instrument 200700005107 in the Office of the Boone County Recorder. The monuments are separated by 17.9 feet, significantly less than the original federal offset of 46 links (30.36 feet) which was confirmed by the 1865 record. Analysis of the relative positions of the found Type B monuments with adjacent corners in all cardinal directions, taking into account original federal dimensions and dimensions shown in the 1865 record clearly indicates that the southerly of the two monuments is in a reasonable position expected for Corner 2, but the northerly of the two monuments is south of the expected position for Corner 1. No uncertainty exists as to the offset, being 46 links or 30.36 feet.

Distance ties shown on the 1994 BCS tie card indicate that the northerly of the Type B monuments was likely set in the same position as the P.K. Nail shown on the 1994 tie card. As noted above, this tie card does not take into account the 46 links federal offset on the range line, treating the two separate corners as a common corner and is clearly in error on that count. No excavation was performed at these corners, as they both fall within the state highway. The southerly of the two Type B monuments was held as marking Corner 2. Corner 1 was established at 30.36 feet north thereof on the prolongation of the line connecting the east quarter corner of section 36 (see BCS Corner NW 050-600) with the monument held as marking Corner 2. A mag nail with washer stamped 'Boone County Surveyor' was set at this position on June 17, 2020. The Type B monument previously held as marking this corner is 12.5 feet south. Another mag nail, unknown origin, was found 16.1 feet north of Corner 2.

Corner 1 was originally established as a wood post in 1819. Corner 2 was established as a wood post in 1822.

Jefferson Township

Section 25 T19N, R2W	Section 30 T19N, R1W
Section 36 T19N, R2W	Section 31 T19N, R1W

Kenneth E. Hedge
Kenneth E. Hedge, County Surveyor

James S. Swift
James S. Swift, IN LS 20200054 August 5, 2020

SECTION CORNER RECORD

NW 100-650

BOONE COUNTY SURVEYOR'S OFFICE

State Plane grid coordinates NAD83 (2011):

North: 1750823.89 East: 3090473.07 (U.S. survey feet)

Type of monument: 5/8" Rebar with metal cap "Boone County Surveyor"

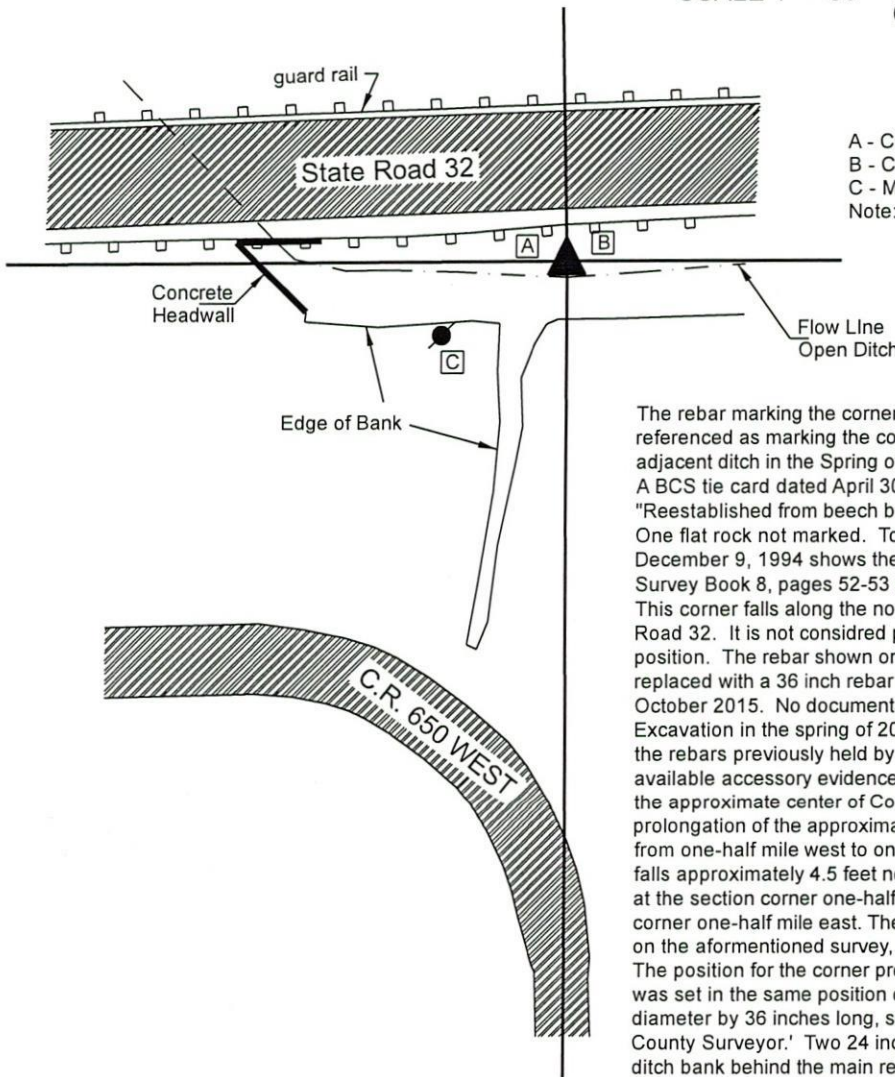
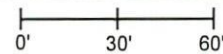
Depth: four inches above ground on north bank of ditch

Indiana tie card references:

IN02_T19NR2W25_76 IN02_T19NR2W36_04

CORNER WITNESS DETAIL

SCALE 1" = 60'



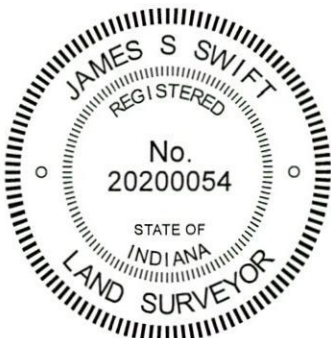
- A - Chisel mark in top of guard rail post, 10.8'
 - B - Chisel mark in top of guard rail post, 11.1'
 - C - Mag nail set in N.E. side power pole, 2' a.g., 42.8'
- Note: all tie dimensions represent horizontal distances

The rebar marking the corner was set in the position of a rebar previously referenced as marking the corner but removed during excavation work along the adjacent ditch in the Spring of 2019.

A BCS tie card dated April 30, 1867 states, with respect to this corner, "Reestablished from beech bearing tree. Set three rocks. One 5,4,3 marked +. One flat rock not marked. Top one 9,9,7 marked +." A BCS tie card dated December 9, 1994 shows the corner as a rebar found. A survey recorded in Survey Book 8, pages 52-53 shows the corner as a rebar found.

This corner falls along the north edge of an open ditch on the south side of State Road 32. It is not considered possible that ancient evidence has survived in this position. The rebar shown on the 1994 tie card was previously located and was replaced with a 36 inch rebar with metal cap stamped 'Boone County Surveyor' in October 2015. No documentation for the corner was produced at that time. Excavation in the spring of 2019 removed the rebar set in 2015. The position of the rebars previously held by this office as marking the corner fits well with the available accessory evidence of the corner, being at the northerly prolongation of the approximate center of County Road 650 West and being at the easterly prolongation of the approximate center of Indiana State Road 32 as it is located from one-half mile west to one-quarter mile west of the subject corner. The rebar falls approximately 4.5 feet north of a straight line connecting a Type B monument at the section corner one-half mile west with a computed position for the section corner one-half mile east. The position of the rebar fits well with the position shown on the aforementioned survey, SB 8, p.52-53.

The position for the corner previously held by this office was held and a new rebar was set in the same position on September 25, 2019. The rebar is 5/8 inch diameter by 36 inches long, set in concrete, with a metal cap stamped 'Boone County Surveyor.' Two 24 inch long sections of 1/2 inch rebar were driven into the ditch bank behind the main rebar and embedded in the same mass of concrete as the main rebar.



Kenneth E. Hedge
 Kenneth E. Hedge, County Surveyor

James S. Swift
 James S. Swift, IN LS 20200054
 November 13, 2019

Jefferson Township

