

# SECTION CORNER RECORD

## BOONE COUNTY SURVEYOR'S OFFICE

SW 500-100

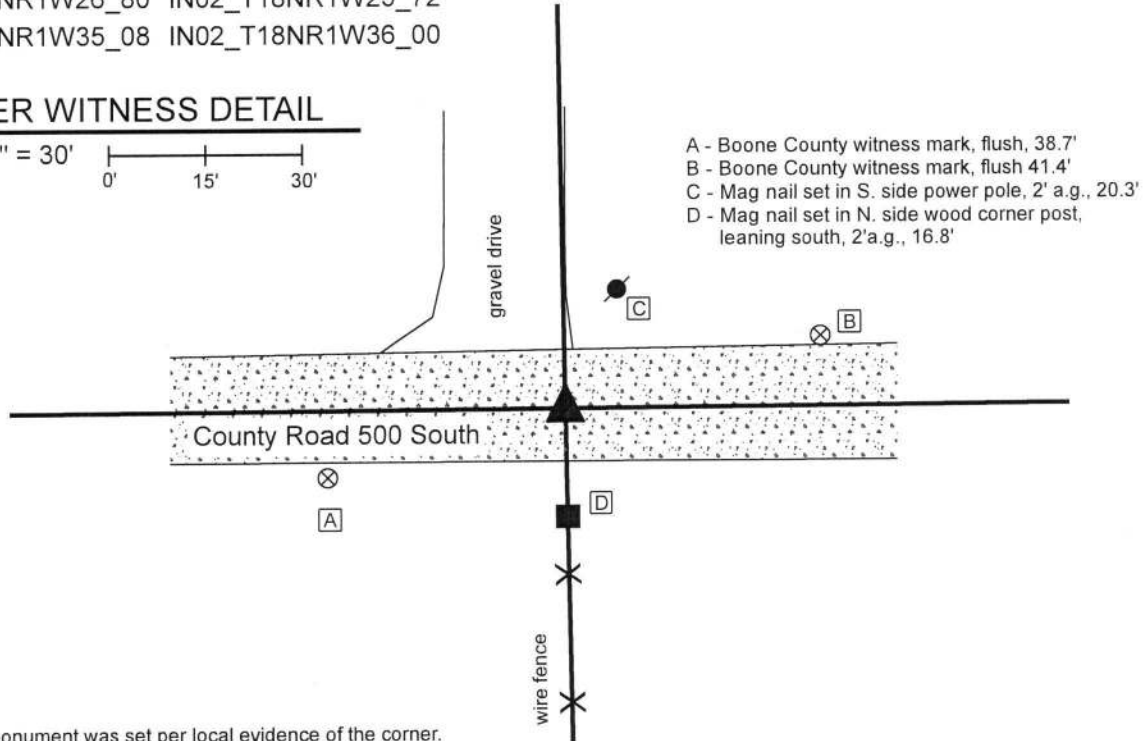
State Plane grid coordinates NAD83 (2011):  
 North: 1719043.73 East: 3119704.75 (U.S. survey feet)

Type of monument: Harrison, 4" disk 'Section Corner'  
 Depth: Six inches below adjacent gravel road surface

Indiana tie card references:  
 IN02\_T18NR1W26\_80 IN02\_T18NR1W25\_72  
 IN02\_T18NR1W35\_08 IN02\_T18NR1W36\_00

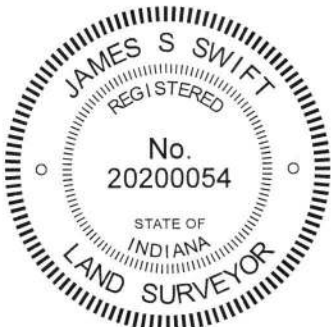
### CORNER WITNESS DETAIL

SCALE 1" = 30'



The Harrison monument was set per local evidence of the corner. A BCS record dated September 8-12, 1837 (date noted in book as more likely to be 1857) states, with respect to this corner, "Reestablished. Set Rock 10x14." No recent BCS tie cards were found referencing this corner. A survey by Ronald E. Wharry, LS #S0420 recorded as Instrument 2017007960 in the Office of the Boone County Recorder shows the corner as being 18.00 feet north of a headpost on the south side of County Road 500 South but shows no monument set or found at the corner.

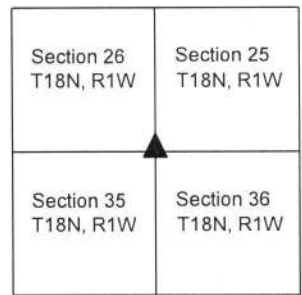
This corner was excavated on April 22, 2019. Prior to excavation, no metal or other artificial monuments were found marking the corner. The estimated position of the corner was established per the evidence of the physical roadway of County Road 500 South and an ancient fence bearing south from said County Road. The intersection point of the road and fence fits well with the relative positions of surrounding corners and evidence. Excavation was centered on a point 1 rod (16.5 feet) north of the ancient wood end post which marks the northerly terminus of said north-south fence. Excavation of an area extending 5 feet east, 5 feet west, 3.5 feet north and 3.5 feet south of the estimated position of the corner revealed no further evidence of the corner. The road bed consists of 4 inches of a bituminous material below which is 4 inches of modern #53 road stone, below which is another 4 inches of older gravel. The presence of the modern road stone indicates substantial grading / road improvement in the recent past. The descriptions for the adjacent properties are in the form of aliquot parts descriptions. Hence, the physical evidence of the roadway and fence were held as controlling for establishing the corner. It has been observed at numerous other corners throughout the county that the most reliable dimension for using accessory evidence such as an end post on the side of a road to discover ancient evidence of a corner is that of 1 rod or 16.5 feet. This dimension was held for purposes of establishing this corner. The corner was established at 1 rod north of the base of the post at the point where the post is flush with ground level and a Harrison monument was set at this position. This position fit very well with approximate center of the physical roadway. Up to 1.5 feet of uncertainty north-south is associated unmonumented position shown on the Wharry Survey. This corner was originally established as a wood post in 1820.



*Kenneth E. Hedge*  
 Kenneth E. Hedge, County Surveyor

*James S. Swift*  
 James S. Swift, IN LS 20200054  
 May 22, 2019

Harrison Township



# SECTION CORNER RECORD

SW 600-000

## BOONE COUNTY SURVEYOR'S OFFICE

State Plane grid coordinates NAD83 (2011):

North: 1713794.56 East: 3125083.2540 (U.S. survey feet)

Type of monument: Harrison, 4" disk 'Section Corner'

Depth: One inch below adjacent road surface

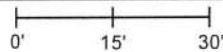
Indiana tie card references:

IN02\_T18NR1W36\_80 IN02\_T18NR1E31\_72

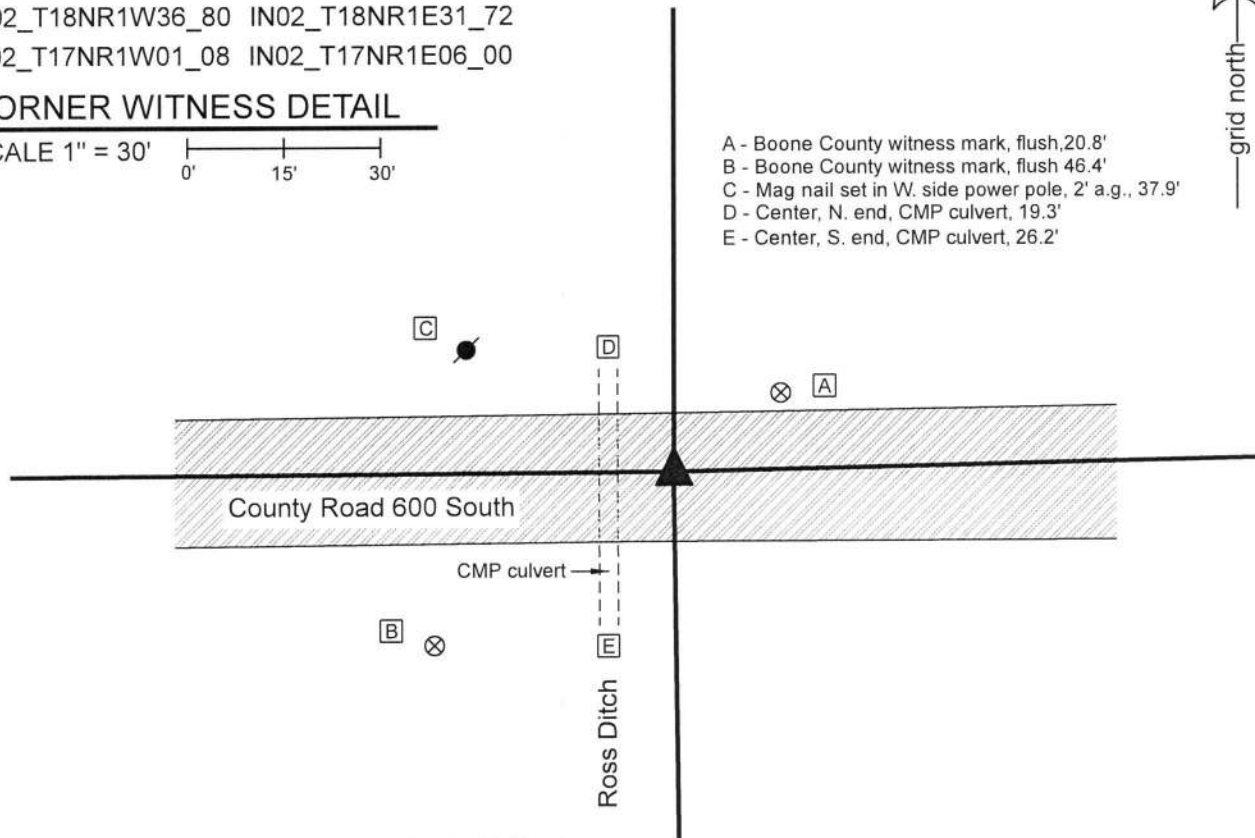
IN02\_T17NR1W01\_08 IN02\_T17NR1E06\_00

### CORNER WITNESS DETAIL

SCALE 1" = 30'



- A - Boone County witness mark, flush, 20.8'
- B - Boone County witness mark, flush 46.4'
- C - Mag nail set in W. side power pole, 2' a.g., 37.9'
- D - Center, N. end, CMP culvert, 19.3'
- E - Center, S. end, CMP culvert, 26.2'

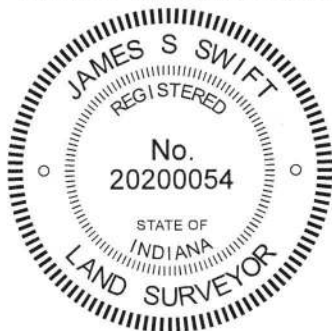


The Harrison monument was set in place of a railroad spike found.

A BCS record dated September 8-12, 1857 (original written as 1837 but writing crossed out. The character of the record fits with 1857, not 1837) states, with respect to this corner, "Reestablished. Set Rock 10x22." A BCS record dated May 8-9, 1911 states, with respect to this corner, "Est. on meridian line in line with H-A, Sec. 31... Rock shaley. 10x10x12. Sharp point up. On N. side gravel road near track." A BCS tie card dated May 19, 1994 shows the corner as a railroad spike in the center of County Road 600 South slightly east of an open ditch.

This corner falls on the east edge of the Ross Ditch. It is apparent that ancient evidence would not remain present, due to previous disruption of the ground associated with excavation along the ditch. The railroad spike called in the 1994 tie card was found undisturbed. The position of the spike matches the remaining two reference ties to the spike. The position of the spike, along the east edge of the ditch, fits very well in alignment with other evidence found along the meridian line. The position of the spike also fits well with evidence of the standard corners to the east (T 18N, R1E) and with evidence of the closing corners to the west (T17N, R1W), though it is noted that excavation has not yet been performed along the line between T18N & T17N, R1W, west of the spike. With no contrary evidence found and general agreement with the positions of surrounding corners, the railroad spike shown on the 1994 tie card was accepted as the best available evidence and was held as marking the corner. The spike was removed a replaced with a Harrison monument in the same position on October 25, 2019.

This corner was originally established as a wood post in 1819.



*Kenneth E. Hedge*  
 Kenneth E. Hedge, County Surveyor

*James S. Swift*  
 James S. Swift, IN LS 20200054  
 November 19, 2019

Jefferson Township

Section 36 T18N, R1W	Section 31 T18N, R1E
Section 1 T17N, R1W	Section 6 T17N, R1E

# SECTION CORNER RECORD

SW 600-100

## BOONE COUNTY SURVEYOR'S OFFICE

State Plane grid coordinates NAD83 (2011):

Corner 1: North: 1713763.82 East: 3119741.54 (U.S. survey feet)

Harrison, 4" disk 'Section Corner' One inch below adjacent road

Depth: One inch below adjacent road surface

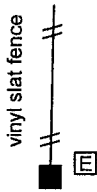
Indiana tie card references:

IN02\_T18NR1W36\_72 IN02\_T18NR1W35\_80

IN02\_T17NR1W02\_08 IN02\_T17NR1W01\_00

### CORNER WITNESS DETAIL

SCALE 1" = 40'

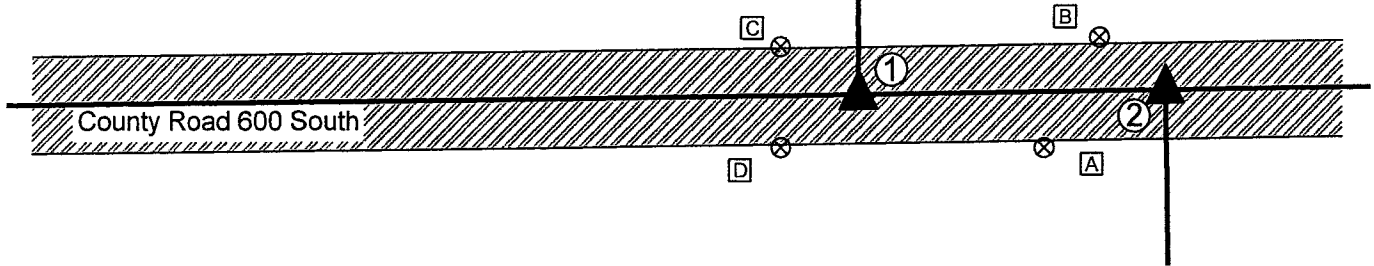


- ① S.E. Corner, Section 35  
S.W. Corner, Section 36  
T 18 N, R 1 W  
Harrison Monument set
- ② N.W. Corner, Section 1  
N.E. Corner, Section 2  
T 17 N, R 1 W  
Position not yet determined

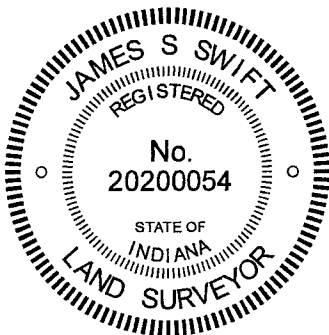


#### TIES TO CORNER 1 ONLY

- A - Boone County witness mark, flush, 40.6'
- B - Boone County witness mark, flush, 51.9'
- C - 5/8" rebar found, flush, 19.4'
- D - 5/8" rebar found, flush, 19.6'
- E - South edge vinyl fence post, flush, 147.8'



The Harrison monument was set in place of a rebar found. A BCS record of September 9-12, 1857 states, with respect to Corner 1, "Reestablished. Set Rock 5x12." A BCS record of February 11-12, 1867 states, with respect to Corner 2, "Reest. Set stake."  
A BCS tie card dated March 18, 1996 shows Corner 1 as a rebar 9.75 feet east of a P.K. Nail.  
Corner 1 was excavated on July 31, 2020. Prior to excavation, two mag nails were found at a separation of 60.6 feet east-west. These two nails appeared to have been intended to mark the respective standard and closing corners. However, the offset of 60.6 feet is substantially less than the original federal offset of 103 links or 67.98 feet. Based on extensive analysis of the relative positions of found evidence as correlated with relevant information in the BCS Surveyor's Record entries, it was concluded that the westerly of the nails, ostensibly marking Corner 1 was too far east. Prior to excavation, the westerly of the two nails was removed but no additional metal reading was detected. However, a rebar was found at 6 inches deep in the road bed approximately 4 feet west of the westerly nail, at the estimated position of the corner as shown on the 1996 tie card. Excavation around the rebar and up to 6 feet west did not reveal further ancient evidence of the corner. A railroad spike, perhaps the same monument as shown on the 1996 tie card was found in the immediate vicinity of the found rebar, but the spike had lost the magnetic character which allows it to be detected by a ferrous metal detector / magnetic locator. The spike was disturbed during excavation and the precise location of this monument was not specifically observed. Excavation was performed to 1 foot east, 6 feet west, 2.5 feet north and 2.5 feet south of the found rebar, to a depth of 2 feet, which is below the bottom of the road bed. No further evidence of Corner 1 was found. The position of the rebar found prior to excavation was held to determine the position of the corner. A Harrison monument was set at this position on July 31, 2020.  
The precise position of Corner 2 will be determined at a later date, after the south quarter corner of Section 36 is excavated and determined.



*Kenneth E. Hedge*  
Kenneth E. Hedge, County Surveyor

*James S. Swift*  
James S. Swift, IN LS 20200054  
March 10, 2021

#### Harrison Township

Section 35 T18N, R1W	Section 36 T18N, R1W
Section 2 T17N, R1W	Section 1 T17N, R1W