

SECTION CORNER RECORD

NW 600-100

BOONE COUNTY SURVEYOR'S OFFICE

State Plane grid coordinates NAD83 (2011):

Corner 1: North: 1777272.78 East: 3119542.02 (U.S. survey feet)

Corner 2: North: 1777272.76 East: 3119487.85 (U.S. survey feet)

Type of monument: INDOT Type B, plug in monument box

Depth: flush with adjacent road surface

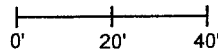
Indiana tie card references:

IN02_T20NR1W35_80 IN02_T20NR1W36_72

IN02_T19NR1W05_08 IN02_T19NR1W06_00

CORNER WITNESS DETAIL

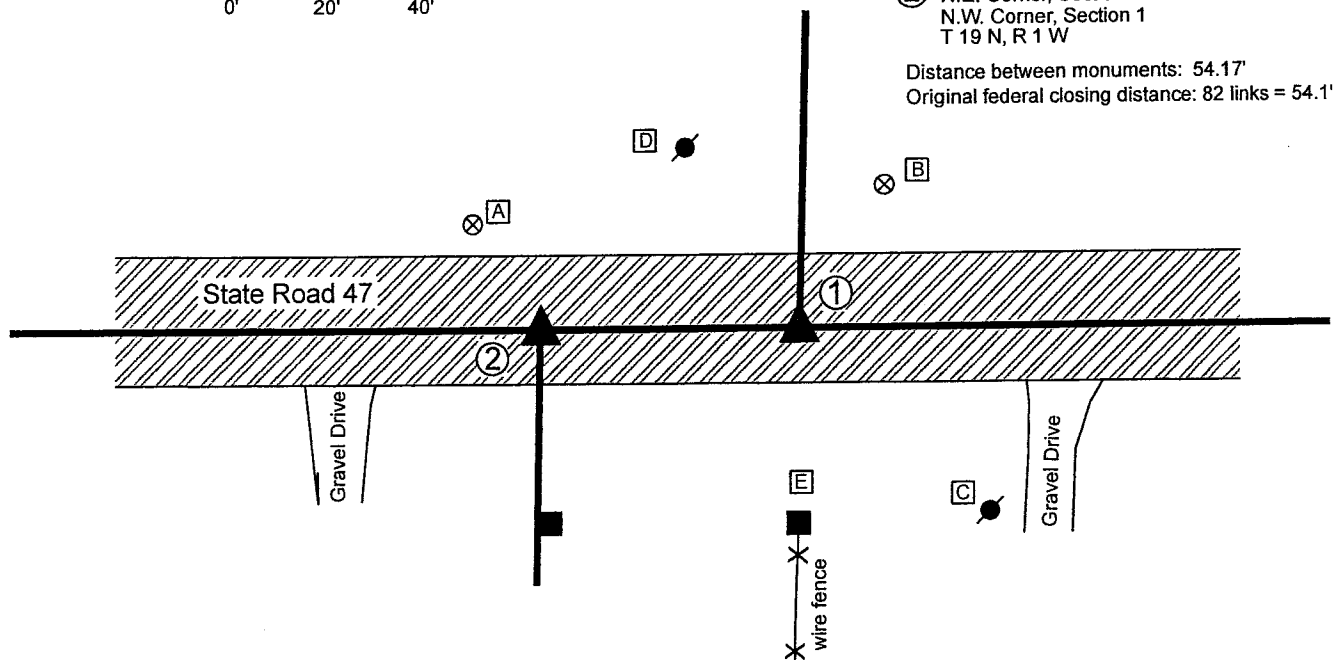
SCALE 1" = 40'



- A - Boone County witness mark, flush, 72.1' to Corner 1, 26.3' to Corner 2
- B - Boone County witness mark, flush, 34.6' to Corner 1, 77.9' to Corner 2
- C - Mag nail set in N. side power pole, 2' a.g., 55.3' to Corner 1, 101.6' to Corner 2
- D - Mag nail set in S. side power pole, 3' a.g., 44.5' to Corner 1, 48.3' to Corner 2
- E - Top, center of wood corner post 40.5' to Corner 1, 67.6' to Corner 2

- ① S.E. Corner, Section 35
S.W. Corner, Section 36
T 20 N, R 1 W
- ② N.E. Corner, Section 2
N.W. Corner, Section 1
T 19 N, R 1 W

Distance between monuments: 54.17'
Original federal closing distance: 82 links = 54.1'



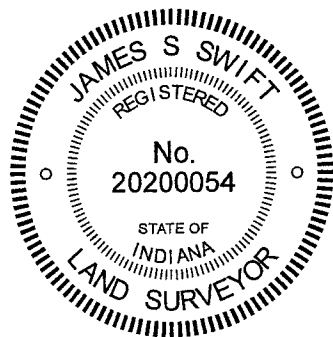
The INDOT Type B monuments were found in place.

A BCS record of February 16, 1855 states, with respect to Corner 1, "Relocated. Set Stone. No Tree." Another BCS record of the same date states, with respect to Corner 2, "Stone marked S1,2."

A BCS tie card dated June 22, 2005 shows both corners as P.K. Nails with washers. A Surveyor's Report for INDOT, recorded as Instrument 200700000086 in the Office of the Boone County Recorder, shows both corners as INDOT Type B Monuments and states that the monument at Corner 1 was set in place of a P.K. Nail with washer and Corner 2 was set in place of a Mag Nail, with references to INDOT plat RS-28322 (SR47).

The monuments found appear to be the same monuments, in the same positions, as those shown on the 2007 INDOT report. The separation of the monuments is within 0.1 of a foot of the federal closing distance reported for Corner 2 in 1822. The positions of the corners fit reasonably well with the relative positions of proximate corners to the east and west.

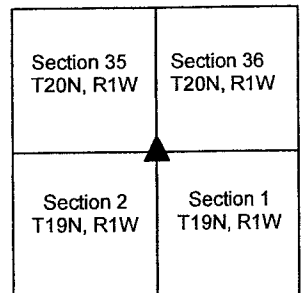
No excavation was performed at these corners, as they fall in a state highway. The existing monuments are held as the best available evidence of the respective corners. Corner 1 was originally set as a wood post in 1819. Corner 2 is not an original federal corner.



Kenneth E. Hedge
Kenneth E. Hedge, County Surveyor

James S. Swift
James S. Swift, IN LS 20200054
January 26, 2021

Washington Township



SECTION CORNER RECORD

NW 600-200

BOONE COUNTY SURVEYOR'S OFFICE

State Plane grid coordinates NAD83 (2011):

Corner 1: North: 1777276.10 East: 3114207.33 (U.S. survey feet)

Corner 2: North: 1777276.21 East: 3114184.82 (U.S. survey feet)

Type of monument: INDOT Type B, plug in monument box

Depth: Flush with adjacent road surface

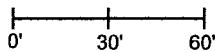
Indiana tie card references:

IN02_T20NR1W34_80 IN02_T19NR1W35_72

IN02_T19NR1W04_08 IN02_T19NR1W03_00

CORNER WITNESS DETAIL

SCALE 1" = 60'

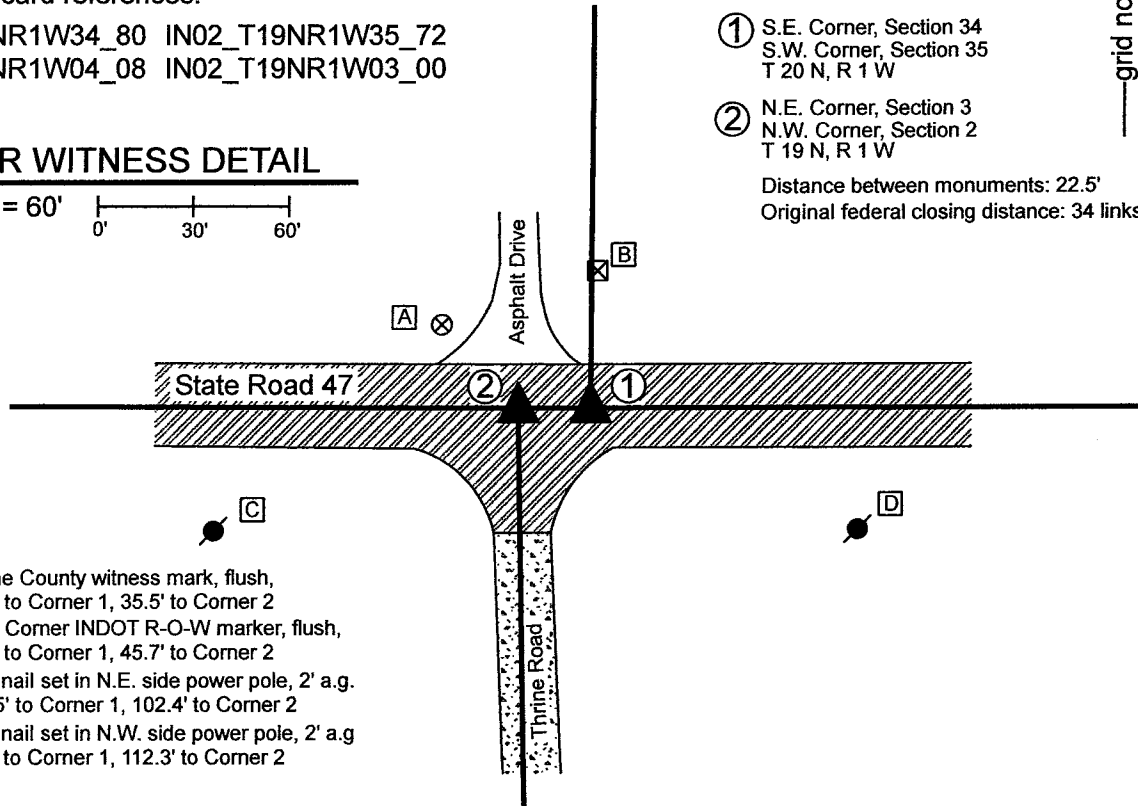


① S.E. Corner, Section 34
S.W. Corner, Section 35
T 20 N, R 1 W

② N.E. Corner, Section 3
N.W. Corner, Section 2
T 19 N, R 1 W

Distance between monuments: 22.5'

Original federal closing distance: 34 links (22.4')



- A - Boone County witness mark, flush, 53.4' to Corner 1, 35.5' to Corner 2
- B - S.W. Corner INDOT R-O-W marker, flush, 40.1' to Corner 1, 45.7' to Corner 2
- C - Mag nail set in N.E. side power pole, 2' a.g. 123.5' to Corner 1, 102.4' to Corner 2
- D - Mag nail set in N.W. side power pole, 2' a.g. 91.4' to Corner 1, 112.3' to Corner 2

The INDOT Type B monuments were found in place and held as marking the respective corners.

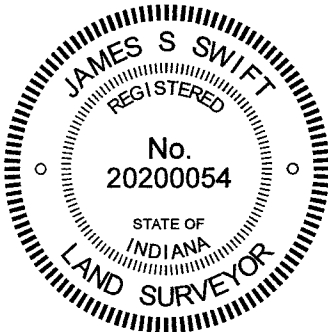
A BCS record of February 21, 1920 states, with respect to Corner 1, "Set rock, 14x8x8." No specific descriptions of Corner 2 were found in the BCS Surveyor's Record beyond the establishment of the corner as a wood post in 1829.

A BCS tie card dated June 22, 2005 shows both corners as P.K. Nails. No BCS tie card was found showing the found Type B monuments, though the respective positions of the two monuments agree substantially with the positions shown on the 2005 tie card. It is believed that the current monuments were set in the same, or nearly the same, positions as held on this 2005 tie card. A Surveyor's Report prepared for INDOT by TBird Design Services, recorded as Instrument 200700000086 in the Office of the Boone County Recorder shows both corners as INDOT Type B monuments and states that the monuments were set in place of Mag Nails after the resurfacing of S.R. 47 per INDOT plas RS-28322 (SR 47). The positions of the found monuments agree with those shown on this report. Please refer to page 30 of 33 of said Instrument 200700000086.

The position of Corner 2 agrees with local evidence in the form of being at the intersection of the east-west state road and the county road to the south. The position of Corner 1 is not supported by local evidence, but agrees with the relative position of Corner 2 with respect to the original federal closing distance of 34 links.

Corner 1 was originally established as a wood post in 1819. Corner 2 was originally established as a wood post in 1829.

Washington Township



Kenneth E. Hedge
 Kenneth E. Hedge, County Surveyor

James S. Swift
 James S. Swift, IN LS 20200054

January 12, 2021

Section 34 T20N, R1W	Section 35 T20N, R1W
Section 3 T19N, R1W	Section 2 T19N, R1W

SECTION CORNER RECORD

NW 700-150

BOONE COUNTY SURVEYOR'S OFFICE

State Plane grid coordinates NAD83 (CORS96):

North: 1782570.39 East: 3116878.73 (U.S. survey feet)

Type of monument: Harrison, 4" disk 'Section Corner'

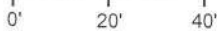
Depth: six inches below adjacent gravel road surface

Indiana tie card references:

IN02_T20NR1W26_72 IN02_T20NR1W35_04

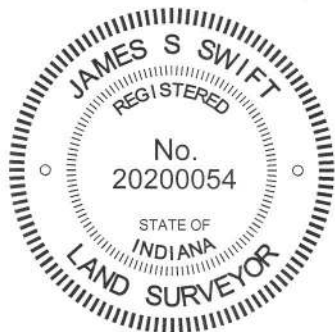
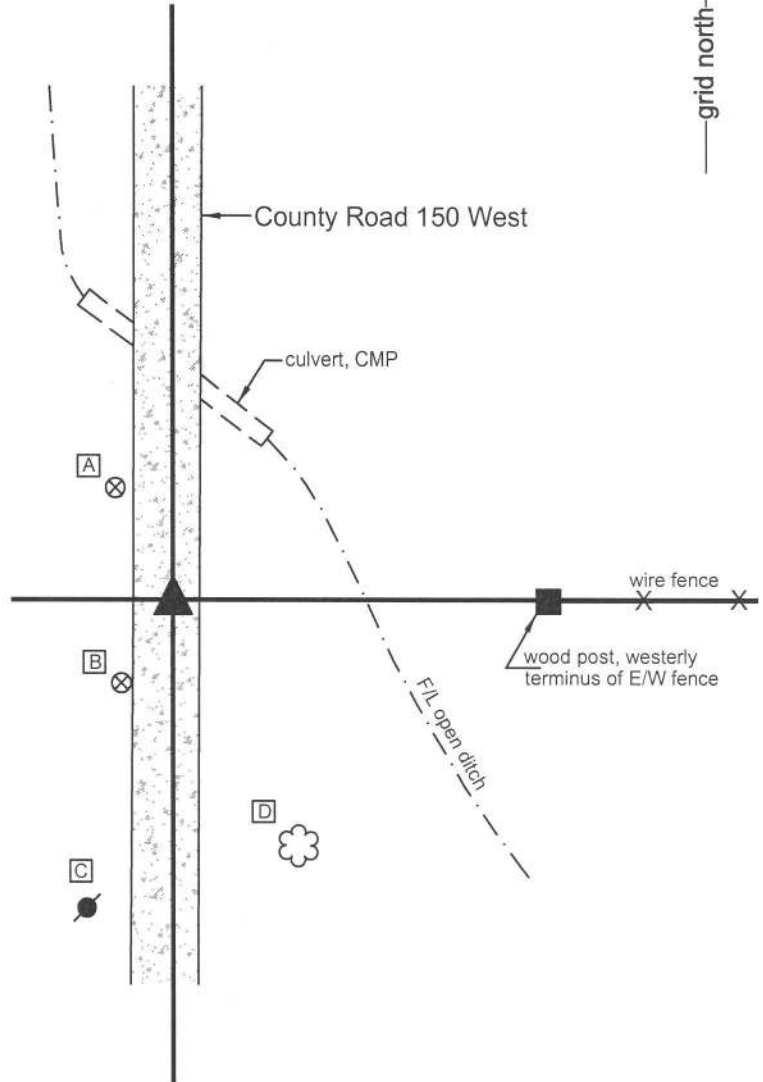
CORNER WITNESS DETAIL

SCALE 1" = 40'



- A - Boone County witness mark, flush, 29.4'
- B - Boone County witness mark, flush, 20.2'
- C - Mag nail set in N. side power pole, 2' a.g., 64.8
- D - N. edge 12 inch diameter walnut tree, 54.3'

The Harrison monument was set over the top, high point of a stone found. A BCS Record of October 15, 1912 states, with respect to this corner, "Reest. by measurement. Drove Stake." No Recent BCS tie cards were found referencing this corner. Excavation was performed at this corner of June 16, 2014. Prior to excavation a 5/8 inch diameter rebar was found at the surface of the road approximately in line with the fence to the east. The source of the rebar is not known. Excavation revealed a stone found at 11 inches deep, north and east of the rebar. With the top 9 inches of the stone exposed, it measured 14 inches N-S and 8 inches E-W. With that amount exposed, the stone remained entirely stable in the clay layer below the road and appeared to be much larger in the vertical dimension. The east and west sides of the stone are vertical while the north and south sides are sloping. The top of the stone protruded 2 to 3 inches out of the clay, into the base of the road bed. No specific marks were observed on the stone. The top center of the stone was also the obvious high point. The stone fit with local evidence of the corner, being within the N-S roadway and in line of the old fence to the east which begins on the east side of an adjacent open ditch. The stone was accepted as the best available evidence of the corner. The top 6 inches of the stone were encased in concrete and a Harrison monument was broken off at 6 inches tall and set over the top, high point of the stone. The rebar, removed during excavation, had been 0.75 foot south and 1.8 feet west of the top, high point of the stone. This corner was originally established as a wood post in 1829.



Kenneth E. Hedge
Kenneth E. Hedge, County Surveyor

James S. Swift
James S. Swift, IN LS 20200054

March 27, 2015

Washington Township

Section 26
T20N, R1W

Section 35
T20N, R1W

PHOTOGRAPHIC DOCUMENTATION

Date of photography: June 16, 2014

The stone as first exposed.



The stone more fully exposed.



View from the west, looking across the top of the stone and east along the fence to the east. Note the distinct top, high point of the stone.



For details and documentation,
refer to related sheet
"Section Corner Record."

SECTION CORNER RECORD

BOONE COUNTY SURVEYOR'S OFFICE

NW 700-200

State Plane grid coordinates NAD83 (2011):
 North: 1782550.76 East: 3114232.84 (U.S. survey feet)

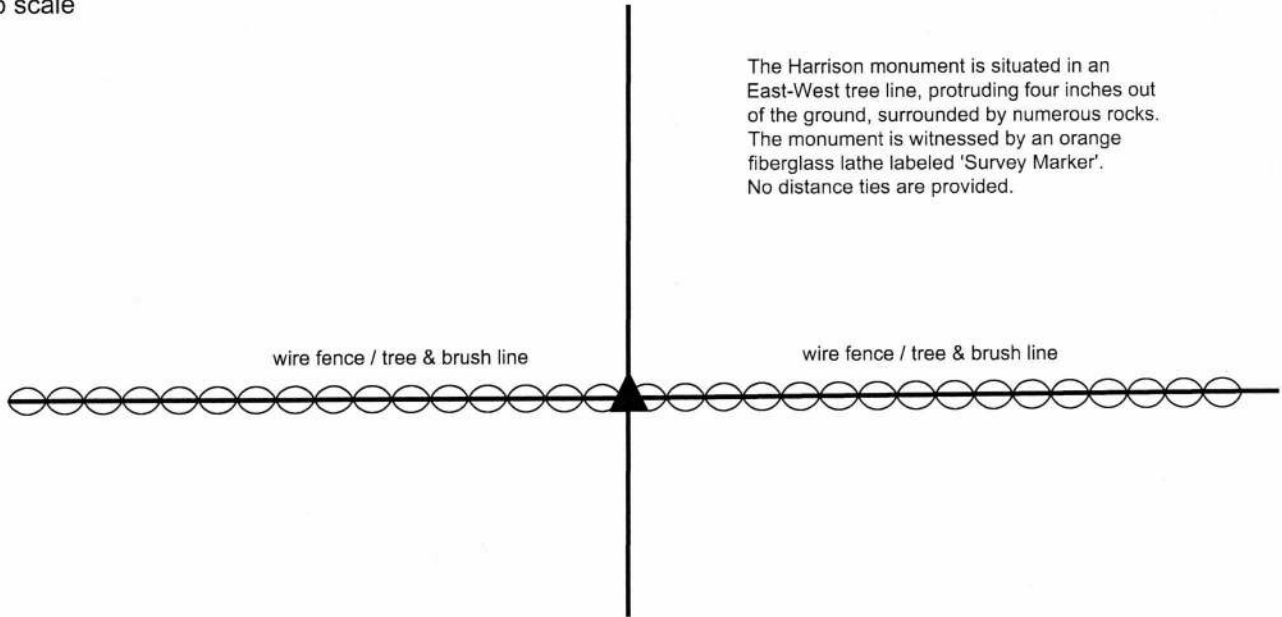
Type of monument: Harrison, 4" disk 'Section Corner'
 Depth: Four inches above adjacent ground

Indiana tie card references:
 IN02_T20NR1W27_80 IN02_T20NR1W26_72
 IN02_T20NR1W34_08 IN02_T20NR1W35_00

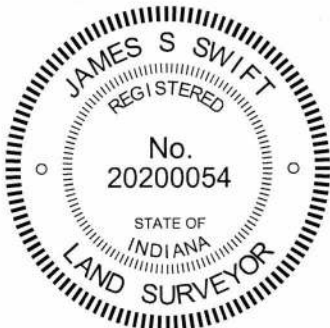


CORNER WITNESS DETAIL

No scale



The Harrison monument was set over the base of a wood corner post. A BCS record of October 21, 1871 states, with respect to this corner, "Corner of section 26, 27, 34 & 35 reestablished from trees, boxed Ash, and found mark. Hickory out. Set rock 18x15x10 +." No recent BCS tie cards were found referencing this corner. Excavation was performed at this corner on November 1, 2017. Prior to excavation an ancient wood post was found with fencing to the east and west. The post is the most substantial post found in the east-west fence line in this vicinity and clearly appears to represent a corner post. The post is known to have been held as marking the corner for previous surveys in the area and the position of the post works well with the relative positions of proximate corners, particularly with the strong evidence of the corners 1/2 and 1/4 mile north, respectively. (See documentation for corner NW 750-200.) Many rocks were found around and in the immediate vicinity of the post, including an extremely large piece of granite immediately west of the post. Excavation of the various rocks and inspection of the dimensions thereof did not reveal the stone described in the 1871 record. The huge piece of granite to the west of the post was not displaced, though excavation and probing under it did not yield the discovery of further rocks. The post, being an ancient cedar headpost 8 inches by 8 inches, was accepted as the best available evidence of the corner and was held as marking the corner. The top of the post was broken off from the subterranean base of the post at approximately 4 inches below ground level. The Harrison monument was set directly over the base of the post, anchored in part to the aforementioned adjacent large piece of granite and also anchored to the top 10 inches of the remaining portion of the base of the post. This corner was originally established as a wood post in 1829.



Kenneth E. Hedge
 Kenneth E. Hedge, County Surveyor

James S. Swift
 James S. Swift, IN LS 20200054
 December 13, 2017

Washington Township

Section 27 T20N, R1W	Section 26 T20N, R1W
Section 34 T20N, R1W	Section 35 T20N, R1W

SECTION CORNER RECORD

NW 700-200

BOONE COUNTY SURVEYOR'S OFFICE

State Plane grid coordinates NAD83 (2011):

North: 1782550.76 East: 3114232.84 (U.S. survey feet)

Type of monument: 5/8" diameter rebar with aluminum cap stamped 'Boone County Surveyor'

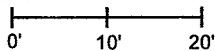
Depth: Three inches below adjacent ground

Indiana tie card references:

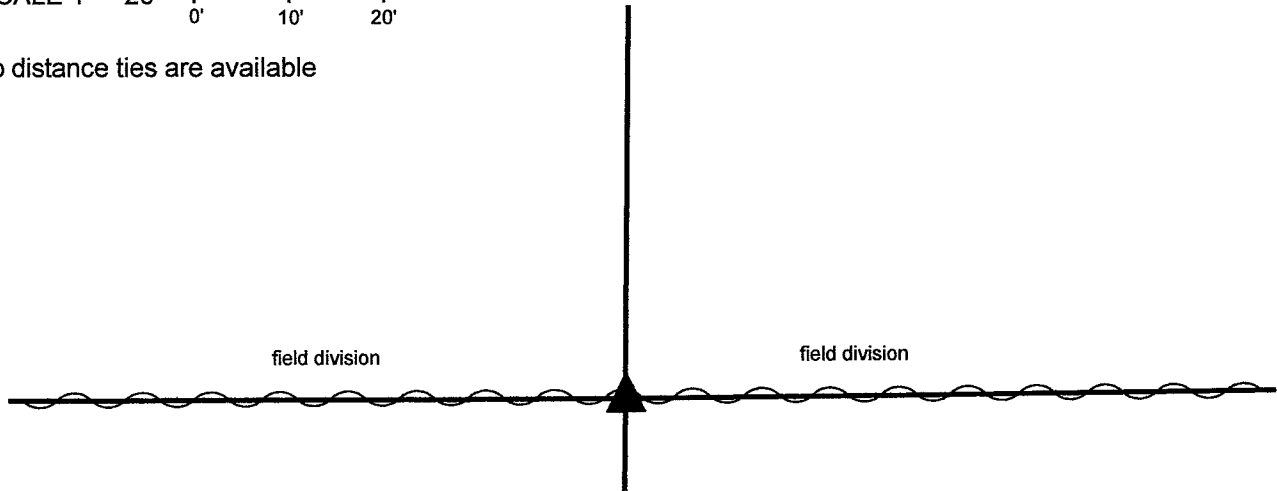
IN02_T20NR1W27_80 IN02_T20NR1W26_72

IN02_T20NR1W34_08 IN02_T20NR1W35_00

CORNER WITNESS DETAIL

SCALE 1" = 20' 

No distance ties are available



This corner was monumented in 2017. In the fall of 2020, the standing east-west fence was removed by the adjoining land owners and the Harrison monument which had been set over the base of a wood corner post was destroyed when the adjacent rocks were removed but the base of the wood post was left largely intact. On March 25, 2021, a rebar was driven into the remnants of the base of the post at the same position previously marked by the Harrison monument.

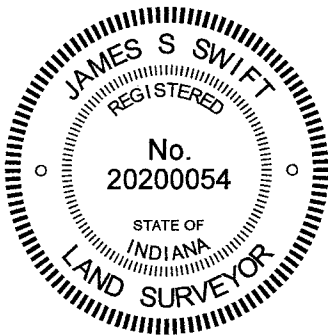
The report of findings and monumentation from 2017 is as follows:

The Harrison monument was set over the base of a wood corner post.


A BCS record of October 21, 1871 states, with respect to this corner, "Corner of section 26, 27, 34 & 35 reestablished from trees, boxed Ash, and found mark. Hickory out. Set rock 18x15x10 +." No recent BCS tie cards were found referencing this corner.

Excavation was performed at this corner on November 1, 2017. Prior to excavation an ancient wood post was found with fencing to the east and west. The post is the most substantial post found in the east-west fence line in this vicinity and clearly appears to represent a corner post. The post is known to have been held as marking the corner for previous surveys in the area and the position of the post works well with the relative positions of proximate corners, particularly with the strong evidence of the corners 1/2 and 1/4 mile north, respectively. (See documentation for corner NW 750-200.) Many rocks were found around and in the immediate vicinity of the post, including an extremely large piece of granite immediately west of the post. Excavation of the various rocks and inspection of the dimensions thereof did not reveal the stone described in the 1871 record. The huge piece of granite to the west of the post was not displaced, though excavation and probing under it did not yield the discovery of further rocks. The post, being an ancient cedar headpost 8 inches by 8 inches, was accepted as the best available evidence of the corner and was held as marking the corner. The top of the post was broken off from the subterranean base of the post at approximately 4 inches below ground level. The Harrison monument was set directly over the base of the post, anchored in part to the aforementioned adjacent large piece of granite and also anchored to the top 10 inches of the remaining portion of the base of the post.

This corner was originally established as a wood post in 1829.




 Kenneth E. Hedge, County Surveyor


 James S. Swift, IN LS 20200054

December 13, 2017 - revised June 1, 2021

Washington Township

Section 27 T20N, R1W	Section 26 T20N, R1W
Section 34 T20N, R1W	Section 35 T20N, R1W

SECTION CORNER RECORD

BOONE COUNTY SURVEYOR'S OFFICE

NW 700-200RSV
 Angle Point on the
 Thorntown Reserve Line

State Plane grid coordinates NAD83 (2011):
 North: 1782556.48 East: 3115046.42 (U.S. survey feet)

Type of monument: 5/8" diameter rebar with
 aluminum cap stamped 'Boone County Surveyor'
 Depth: Fourteen inches below adjacent ground

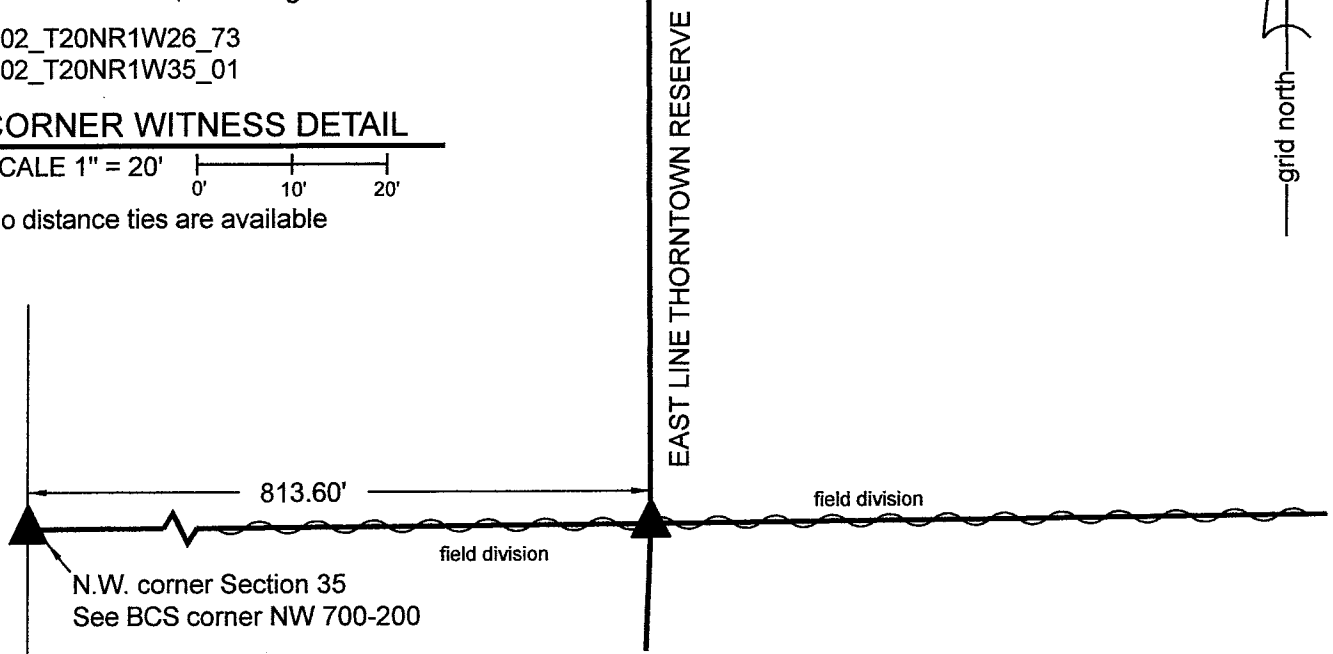
No Indiana tie card references are available to precisely
 define this corner, nearest grid references are:

IN02_T20NR1W26_73
 IN02_T20NR1W35_01

CORNER WITNESS DETAIL

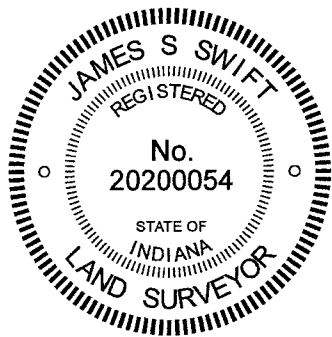
SCALE 1" = 20'

No distance ties are available



The Harrison monument was set in place of a stone found.

This corner falls along the east line of the Thorntown Reserve. The corner was originally established in 1822 as that part of Township 20 North, Range 1 West which lies east of the reserve was being subdivided. The subsequent federal notes from 1829, when that part of T20N, R1W which lies within the reserve area was being subdivided, show that the reserve corner was located at 12.34 chains (814.44 feet) east of the northwest corner of Section 35 (BCS corner NW 700-200). The legal description of the adjoining land to the south, described in Instrument 9703538 in the Office of the Boone County Recorder, calls for an iron bar at the corner, 813.54 feet east of the N.W. corner of Section 35. A BCS record of September 8, 1904 states, with respect to the reserve corner, "Found rock et by Huckstep and by measurement found it to be set in correction position." This record shows the corner as being at 12.33 chains (813.78 feet) east of the N.W. corner of Section 35. The reference to the rock set by Huckstep was not found in the BCS Surveyor's Record. It is known that a standing east-west fence existed at this corner in 2017, though specific evidence of the corner was not located at that time due to a substantial pile of brush and wood which had been bulldozed into the vicinity of the corner. The fence and brush were removed by the adjoining land owners in the fall of 2020. The corner was revisited in the Spring of 2021. A position for the corner was computed with respect to dimensions recited in said record 9703538, which substantially agreed with the distances called in the original federal field notes on 1829 and also with the 1904 BCS record. Excavation revealed a stone found at 6 inches below grade. The stone measured 14 inches tall by 6 inches E-W by 9 inches N-S, was vertical as found and appeared to have been purposely set to mark the corner. The stone was found at 813.60 feet east of the N.W. corner of Section 35 and was within 0.5 foot of the position of the corner computed with respect to said record 9703538. The stone was accepted as the best available evidence of the corner and was held as marking the corner. The stone was removed and replaced with a 24-inch length of 5/8-inch rebar with a metal cap stamped Boone County Surveyor set at 14 inches below grade. It is noted that this corner falls in-line with other evidence of the Thorntown Reserve to the north, but that the reserve line appear to bend at this corner due to issues with the alignment of the reserve line as it crosses the township line between T19N, R1W and T20N, R1W.



Kenneth E. Hedge
 Kenneth E. Hedge, County Surveyor

James S. Swift
 James S. Swift, IN LS 20200054
 June 1, 2021

